

**Government of the District of Columbia
Department of Behavioral Health (DBH)**

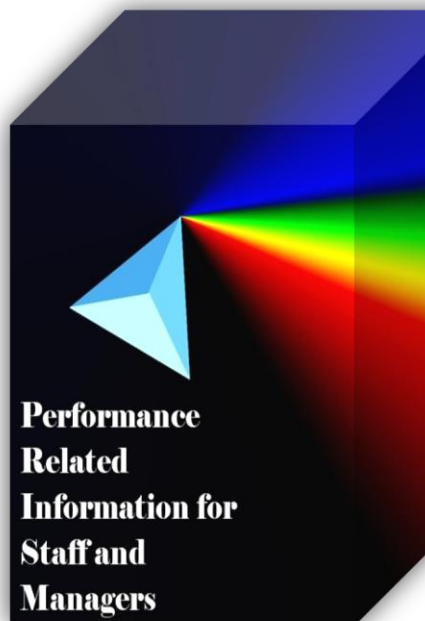


Performance Related Information for Staff and Managers

PRISM

OCTOBER 2013

Table of Contents



1.	Admissions to SEH	1
2.	Discharges from SEH.....	1
3.	Average Daily Census	2
4.	Transfers	2
5.	30-Day Readmission Rate	2
6.	Unusual Incidents	3
7.	Patient-Involved Unusual Incidents	3
8.	Unusual Incidents by Severity	4
9.	Selected Types of Incidents	4
10.	Physical Assaults by Severity	5
11.	Patient Injuries	5
12.	Staff Injuries	5
13.	Percent of Patients Restrained or Secluded	6
14.	Restraint Hours Rate & Seclusion Hours Rate	6
15.	Elolements	6
16.	Reported Medication Variance Events	7
17.	Reported Adverse Drug Reactions	7
18.	Percent of Missing Documentation on Med-Administration.....	8
19.	Number of STAT Events and Individuals Involved	8
20.	Demographics and Length of Stay	9

- ☐ Appendix 1) Table – Census, Admissions & Discharges
- ☐ Appendix 2) Table – Key Performance Indicators
- ☐ Appendix 3) Table – Unusual Incident & Medication
- ☐ Appendix 4) Table – Restraint & Seclusion
- ☐ Appendix 5) Table – Major Incidents by Incident Location/Unit
- ☐ Appendix 6) Table – Demographic Information of Individuals in Care

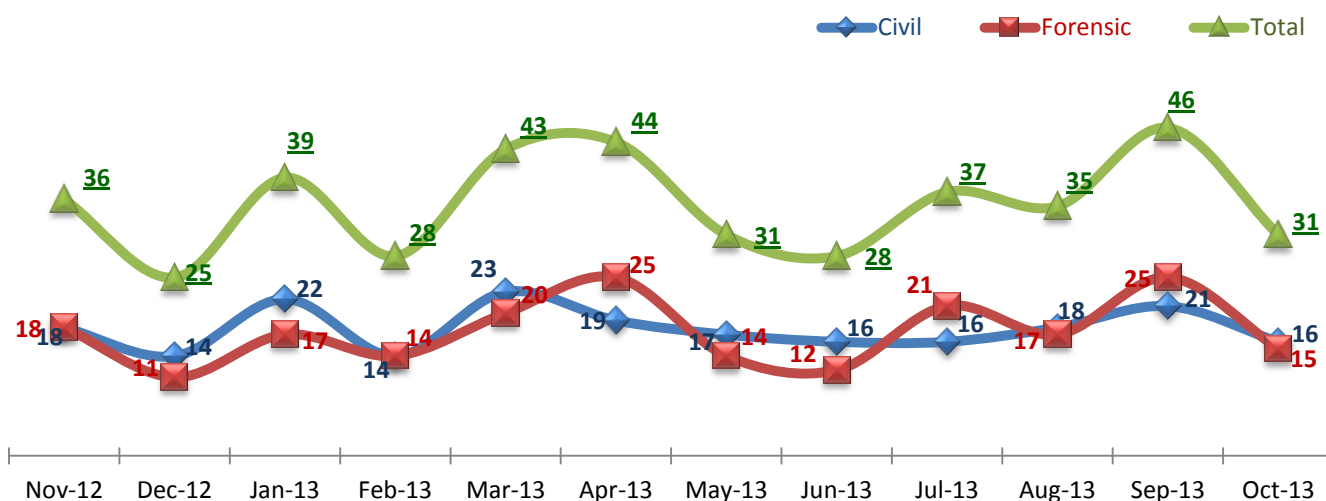
11/18/2013

Office of Statistics and Reporting (OSR)

Key Trends: Admission, Discharge, Transfer, Census, and Readmissions (1~5)

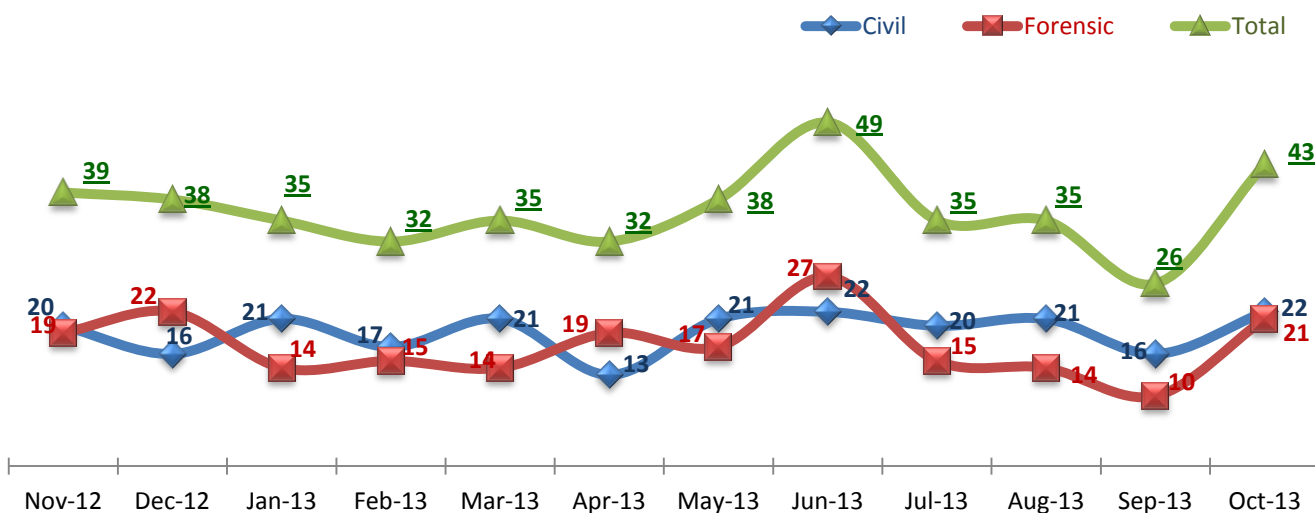
- In October 2013, admissions declined to 31 from 46 in September while discharges increased to 43 from 26 in September. Although the number of discharges exceeded the number of admissions, the average daily census for the month of October remained the same as in the previous month.
- The number of likely medical transfers remained low, at around 10, for several months but increased to 20 in October 2013.
- The 30-day readmission rate for FY2013 (5.6%) is slightly higher than the previous year's (5.4%) but is still lower than NPR¹ (6.8%).

1. Admissions to SEH



* Number of admissions to SEH inpatient program, including transfers from outpatient to inpatient program.

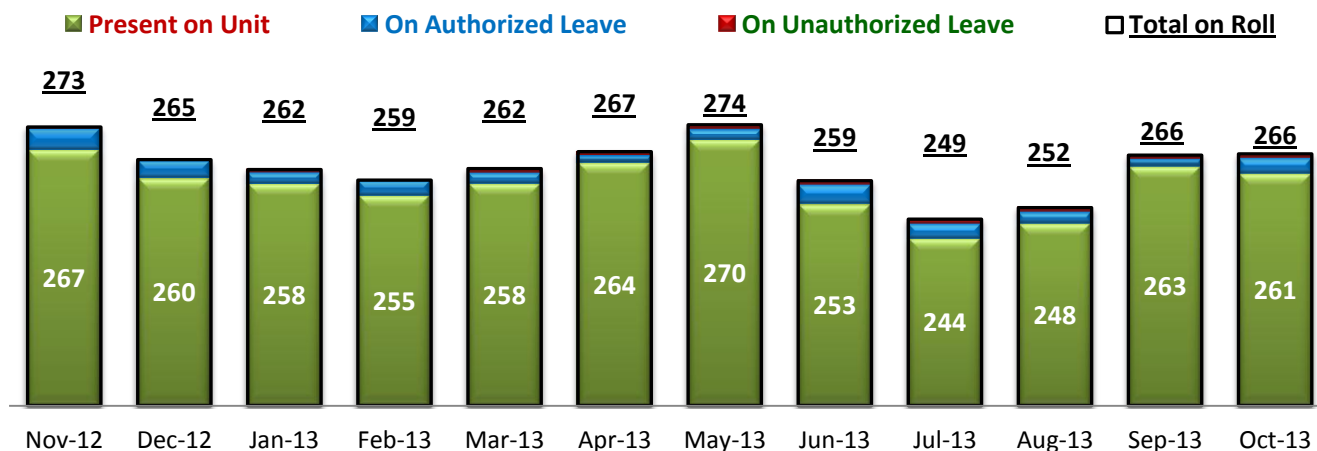
2. Discharges from SEH



* Number of discharges from SEH inpatient program, including transfers from inpatient to outpatient program.

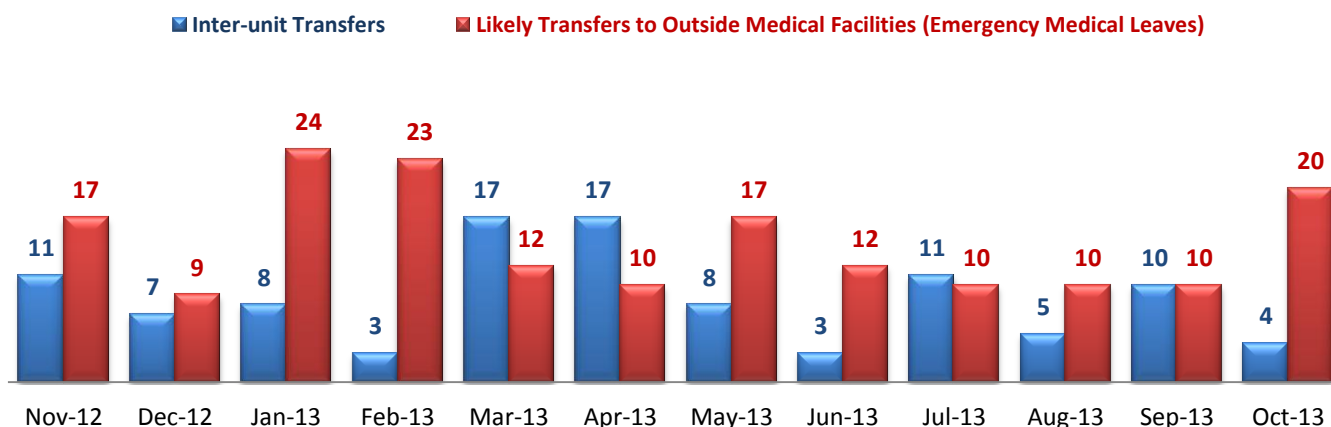
¹ NPR: National Public Rate as of Jun 2012 was published in January 2013 by National Association of State Mental health Program Directors Research Institute (NRI), based on data collected from a number of state psychiatric hospitals nationwide.

3. Average Daily Census



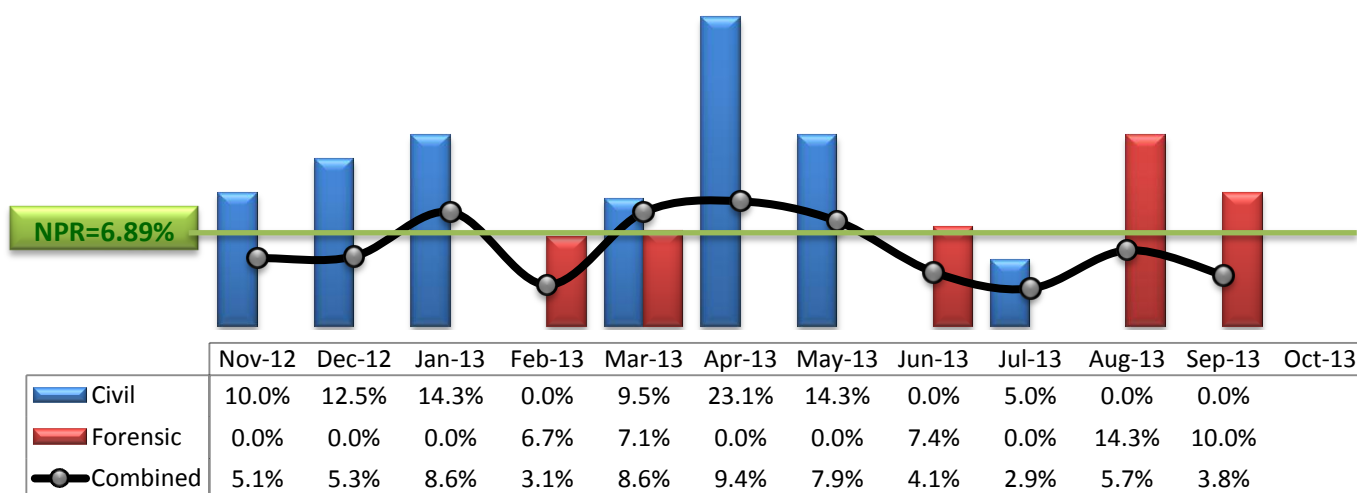
* Data above is the daily average number of individuals counted at 11:59 PM every day during each month.

4. Transfers



* Number of inter-unit transfers that occurred during month and number of emergency medical leaves that were initiated during month.

5. 30-Day Readmission Rate

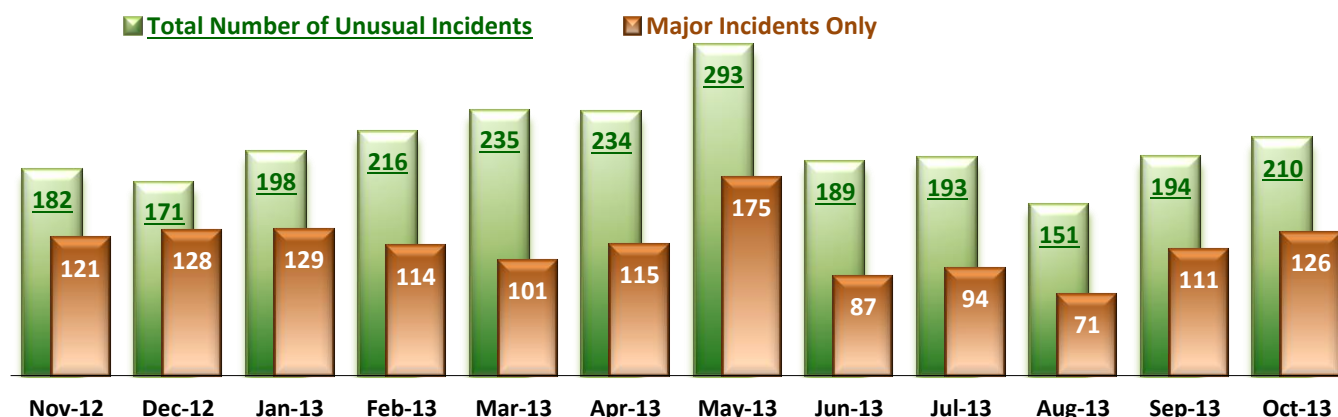


* Percent of discharges that returned to SEH within 30 days of discharges. It does not include those who may have been re-hospitalized at another psychiatric facility. This measure requires 30-day observation following discharge.

Key Trends: Unusual Incidents (6~15)

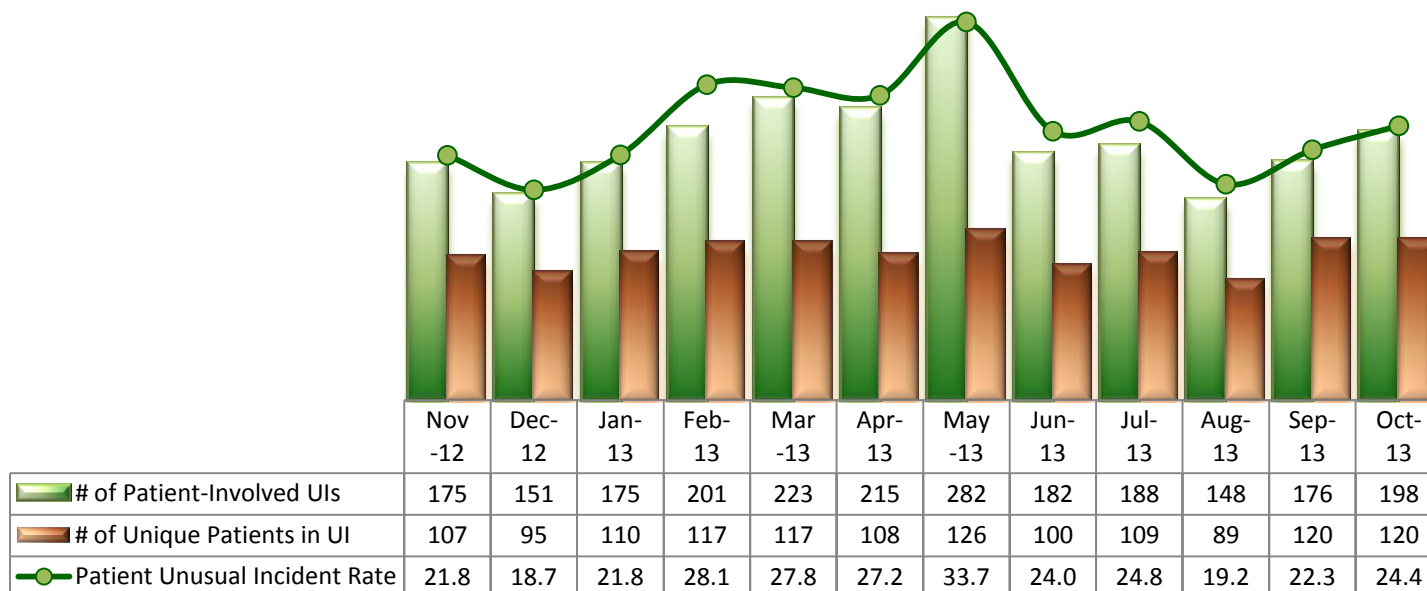
- The total number of unusual incidents (UIs) increased to 212 in October from 194 in September. The increase of UIs in September and October may be attributed to the significant increase of admissions and census that occurred in September and continued in October 2013. Previous studies suggest that UIs are likely to involve recent admissions more frequently than those who have been in care for long term.
- The increase of UIs in October occurred largely at both severe and low level. Particularly, aggressive behaviors (43), physical assaults (42), self-injurious behaviors (3), contrabands (13), medication refusals (23) and security breach incidents (6) noticeably increased while falls and injury incidents decreased. The number of staff injured, however, increased.
- Both seclusion and restraint rate/hours remained far below the national average (NPR) throughout the year.
- During the month of May 2013, the Hospital was serving a few forensic individuals who were frequently involved in UIs, contributing to a huge spike in the May number of UIs, particularly violent incidents.

6. Unusual Incidents



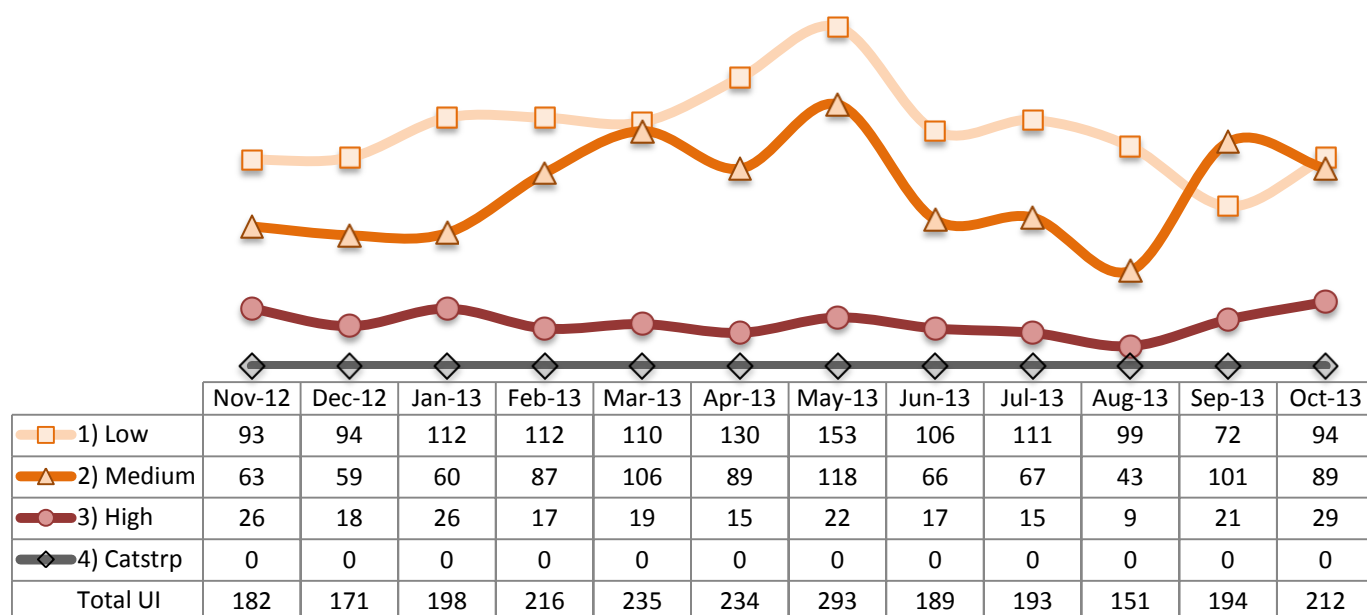
* Numbers above represent all types of the unusual incidents (UIs) that were reported to the Risk Manager by PRISM publication date, including those that did not involve any patients.

7. Patient-Involved Unusual Incidents

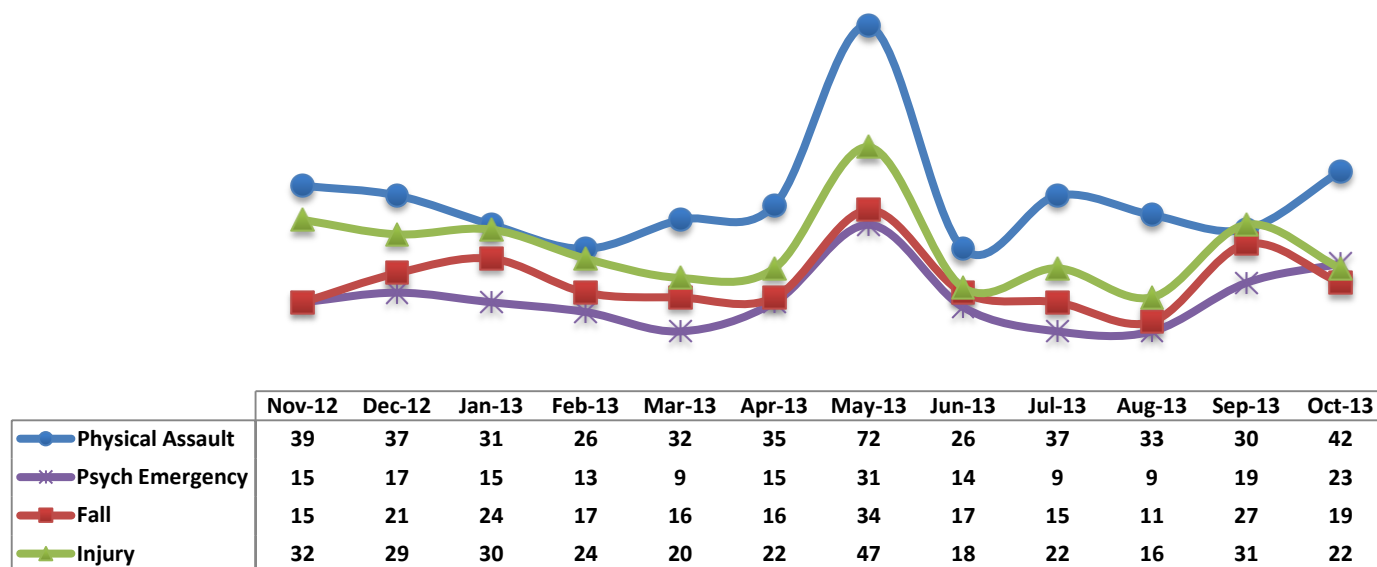


* The patient UI rate is the number of patient-involved unusual incidents reported for every 1000 inpatient days.

8. Unusual Incidents by Severity

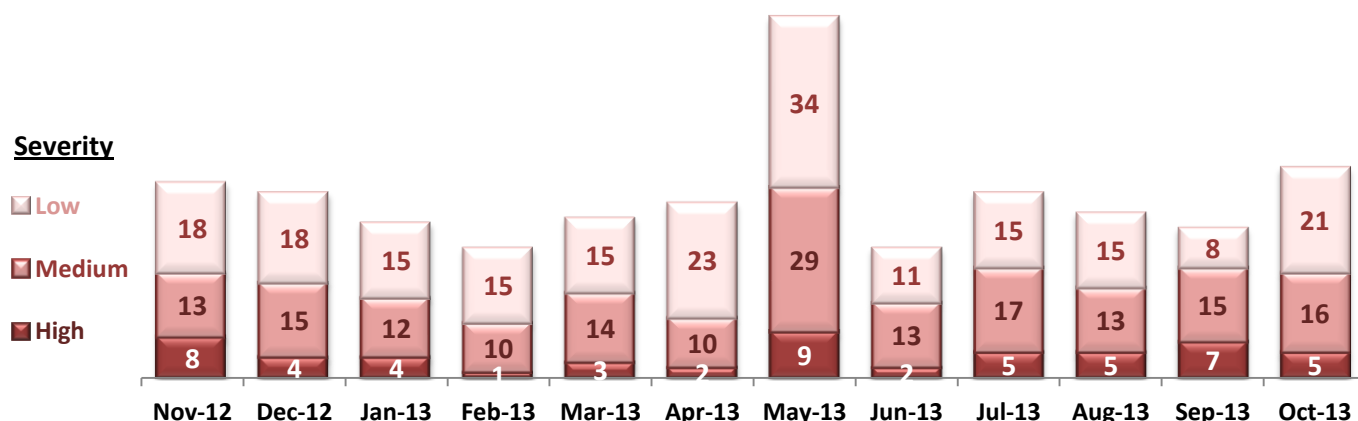


9. Selected Types of Incidents



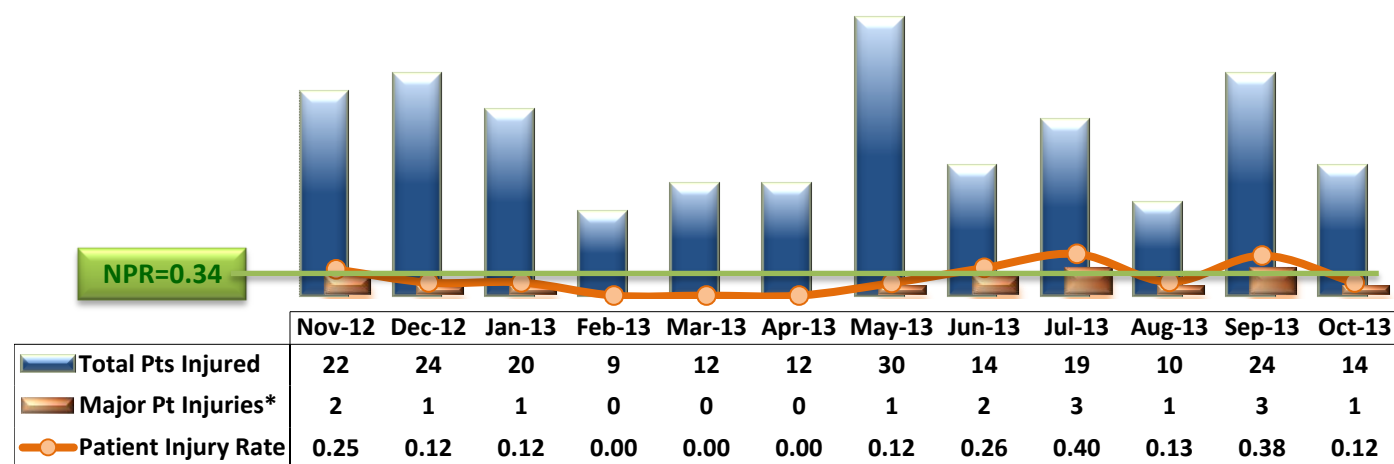
* These are incident types that are frequently reported. Some incidents may be counted in multiple categories. For example, a physical assault incident that accompanied psychiatric emergency and injury is counted under psychiatric emergency and injury as well as under physical assault. Injury is broadly defined to include any type of injuries regardless of the cause or severity level.

10. Physical Assaults by Severity



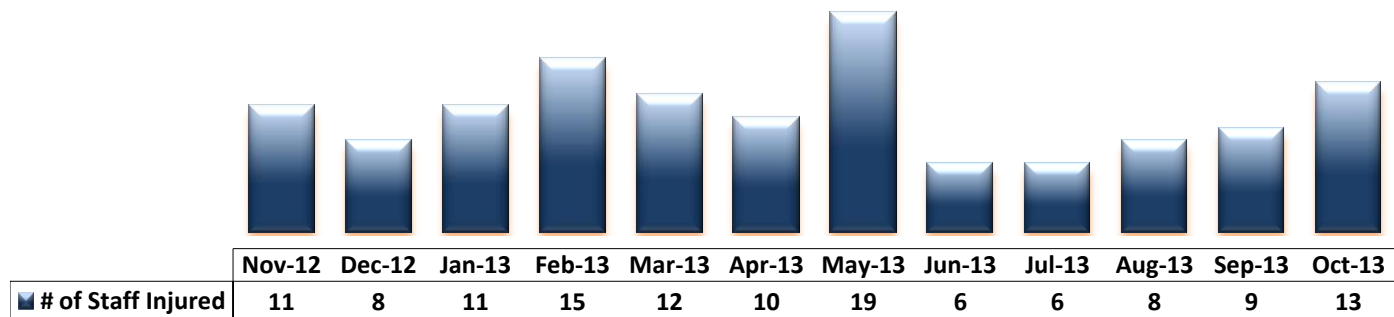
* Any physical assault that accompanies a code 13 or results in extensive injury needing off-unit treatment or transfer to ER is considered to be high severity, any physical assault that causes a minor injury that can be treated on unit is considered to be medium severity, and physical assault events that result in no injury are considered to be low severity.

11. Patient Injuries



* Injury is broadly defined to include any type of injuries regardless of the cause or severity level. The total number of patients injured represents all of the reported injuries including minor injuries treated with first aid alone. However, the patient injury rate considers only the number of patient injuries that required beyond first-aid level treatment based on the NRI definition and the patient injury rate is the number of 'major' patient injuries per every 1000 inpatient days

12. Staff Injuries

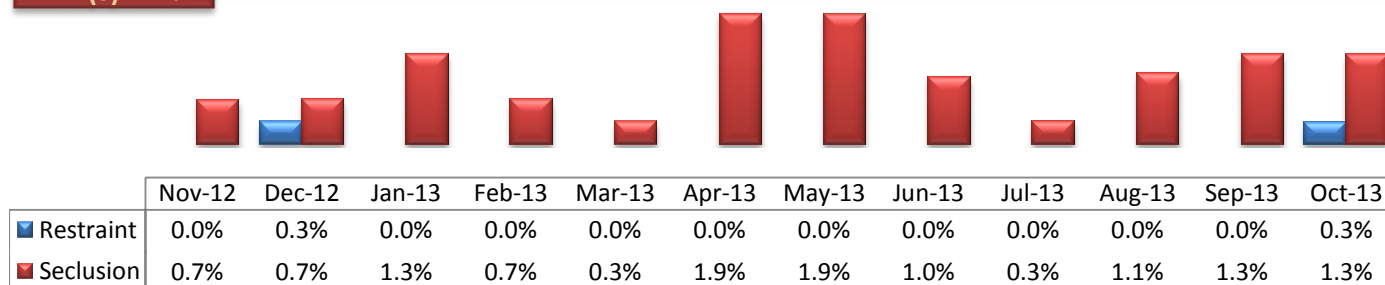


* Injury is broadly defined to include any type of injuries regardless of the cause or severity level. The total number of staff injured represents all of the reported staff injuries including minor injuries treated with first aid alone.

13. Percent of Patients Restrained or Secluded

NPR(R)=5.7%

NPR(S)=2.4%

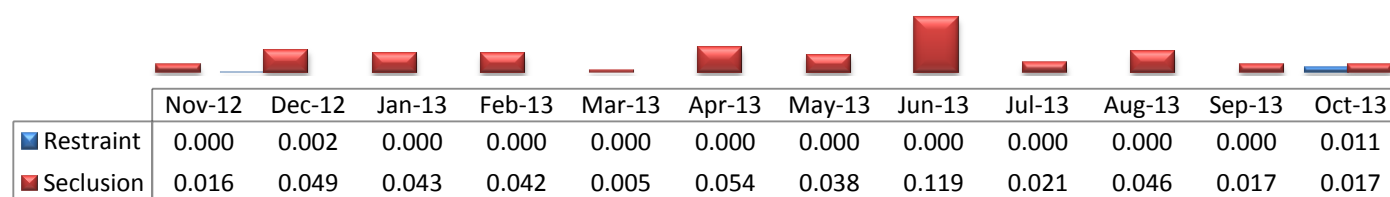


* Percent of unique patients who were restrained at least once and percent of unique patients who were secluded at least once. The denominator includes all individuals who were served in care >=1 day during month.

14. Restraint Hours Rate & Seclusion Hours Rate

NPR(R)=0.65

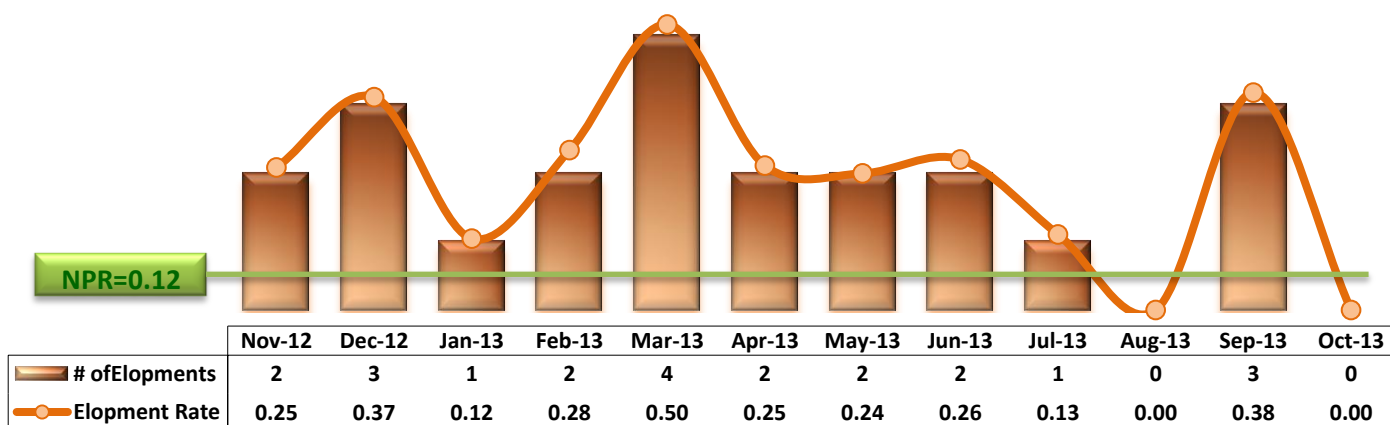
NPR(S)=0.55



* Restraint/Seclusion Hours Rate: Number of hours spent in restraint/seclusion for every 1000 inpatient hours.

15. Elopements

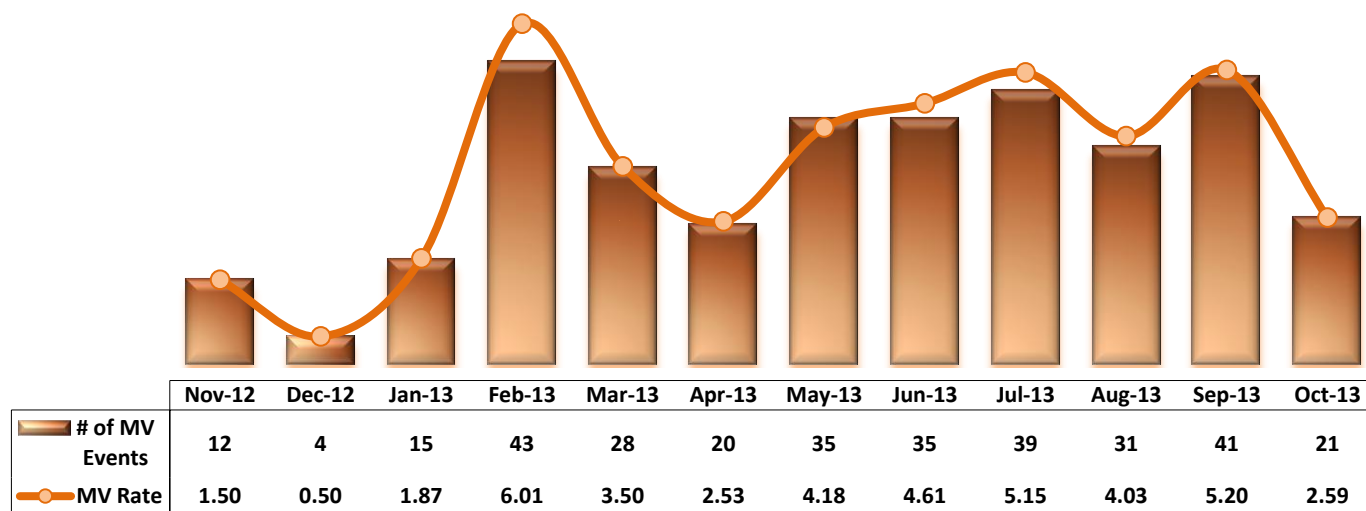
NPR=0.12



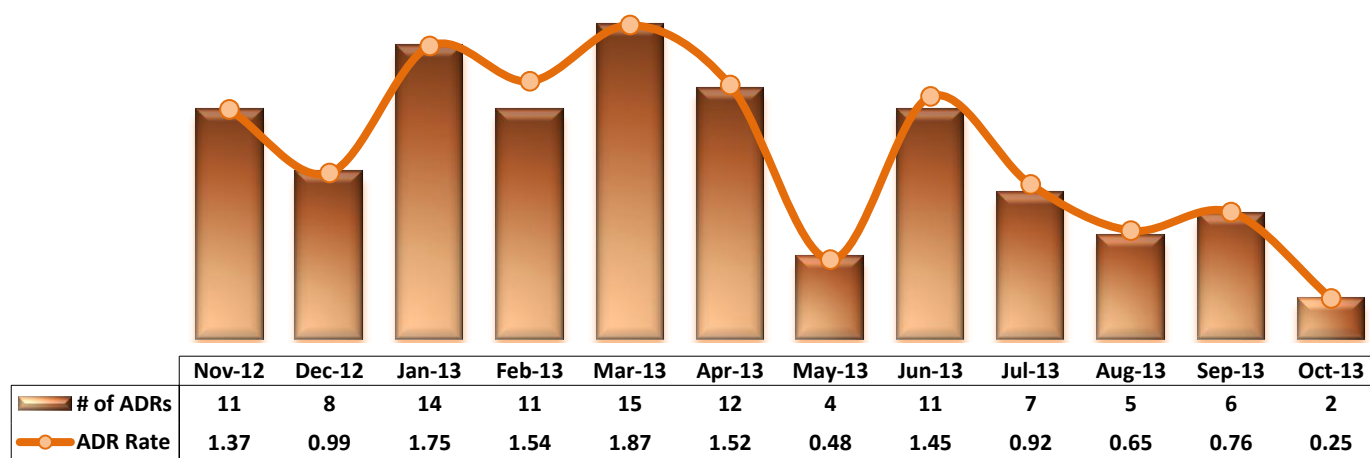
* It counts the total number of unauthorized leaves for any duration that were initiated during month and were recorded in Avatar. The elopement rate is the number of those unauthorized leaves that occurred for every 1000 inpatient days.

Key Trends: Medication Documentation, Medication Variance, ADR, and STAT (16~19)

- The number of reported medication variance events stayed at 30 or above since May 2013 but declined to 21 in October 2013.
- The number of reported ADRs has remained below 10 since July, with two (2) in October.
- The rate of missing documentation on medication administration increased again in October to 0.60%.
- The number of STAT events declined to 32 in October from 41 in September. Of the 32 events in October, 22 were reported as involuntary emergency medication UIs to the Risk Manager.

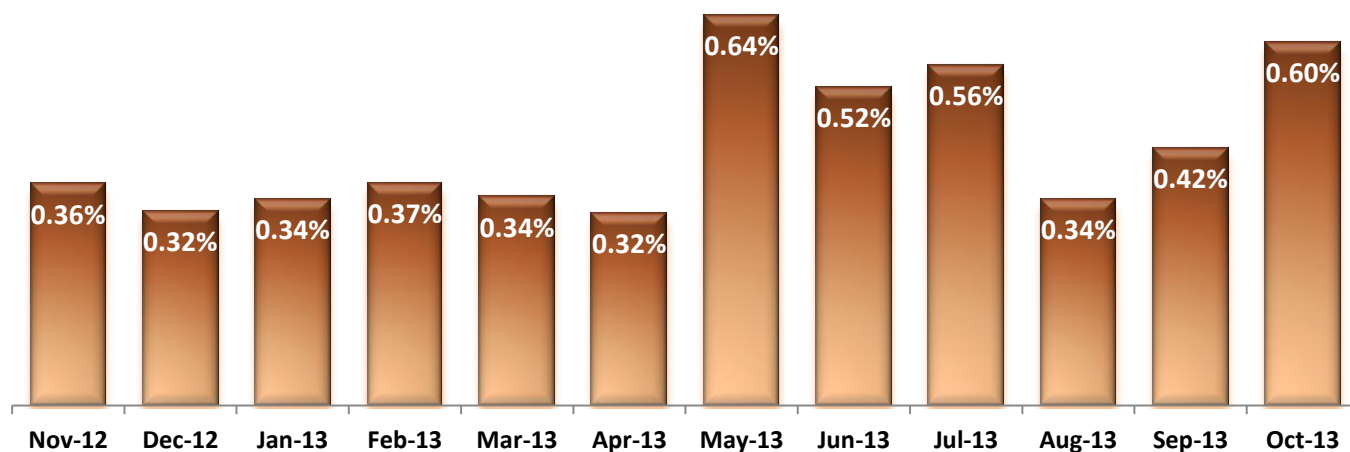
16. Reported Medication Variance Events

* MV Rate: Number of reported medication variance events that occurred for every 1000 inpatient days.

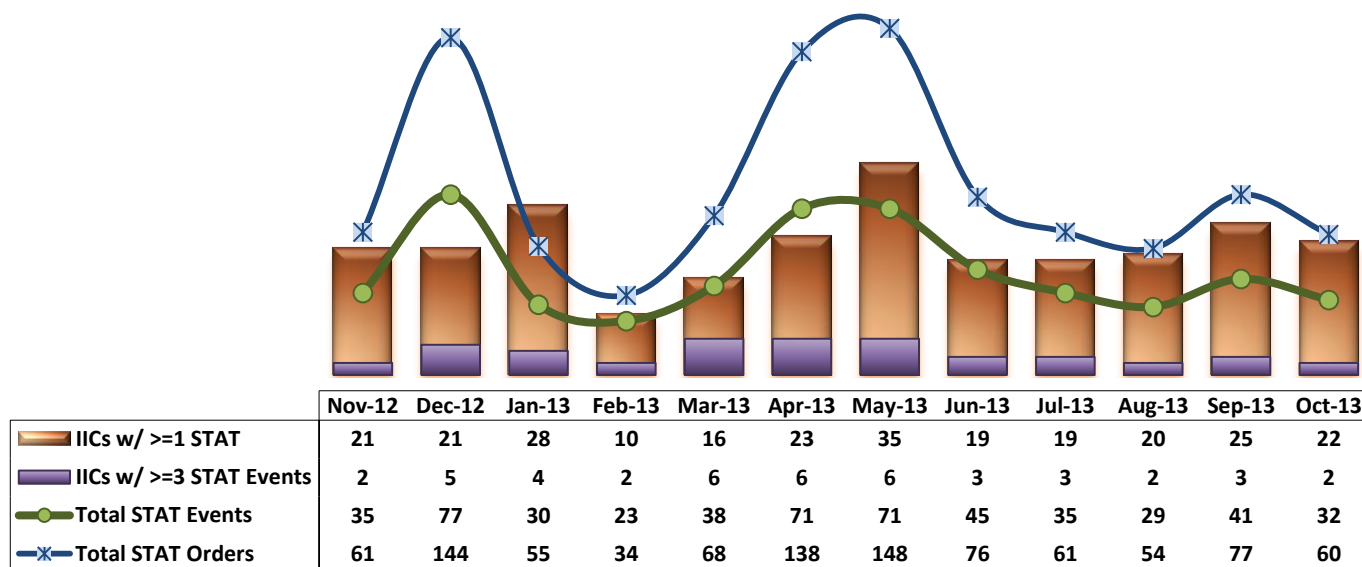
17. Reported Adverse Drug Reactions

* ADR Rate: Number of reported adverse drug reaction events that occurred for every 1000 inpatient days.

18. Percent of Missing Documentation on Med-Administration



19. Number of STAT Events and Individuals Involved



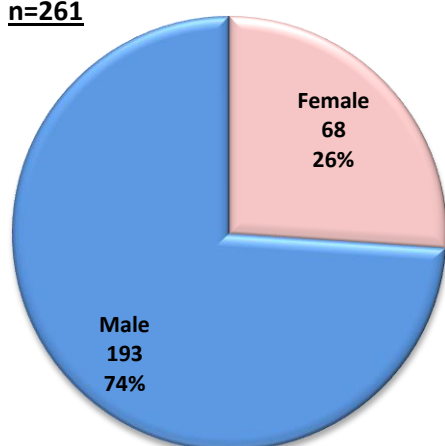
Key Trends: Demographics, Legal Status, and Length of Stay (20)

- One out of four individuals in care is female.
- The age distribution trend suggests that individuals in our care continue to age. The percentage of those 60 years or older gradually increased throughout the year while the median age continued to remain at 56 years old for the past several months.
- About two out of five individuals in care have a civil legal status at end of FY2013.
- The median length of stay (LOS) for individuals in care dropped significantly to 857 days as of September 30, 2013, due to the large number of admissions in September, but increased back to above 1000 days by the end of October when admissions declined. A spike of admissions tends to lower the median length of stay for the short-term.

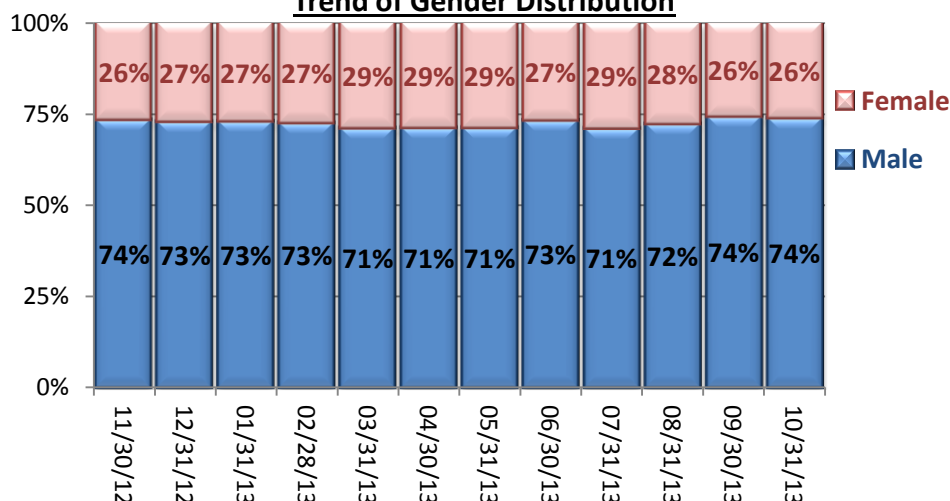
20. Demographics and Length of Stay

Gender Distribution (10/31/13)

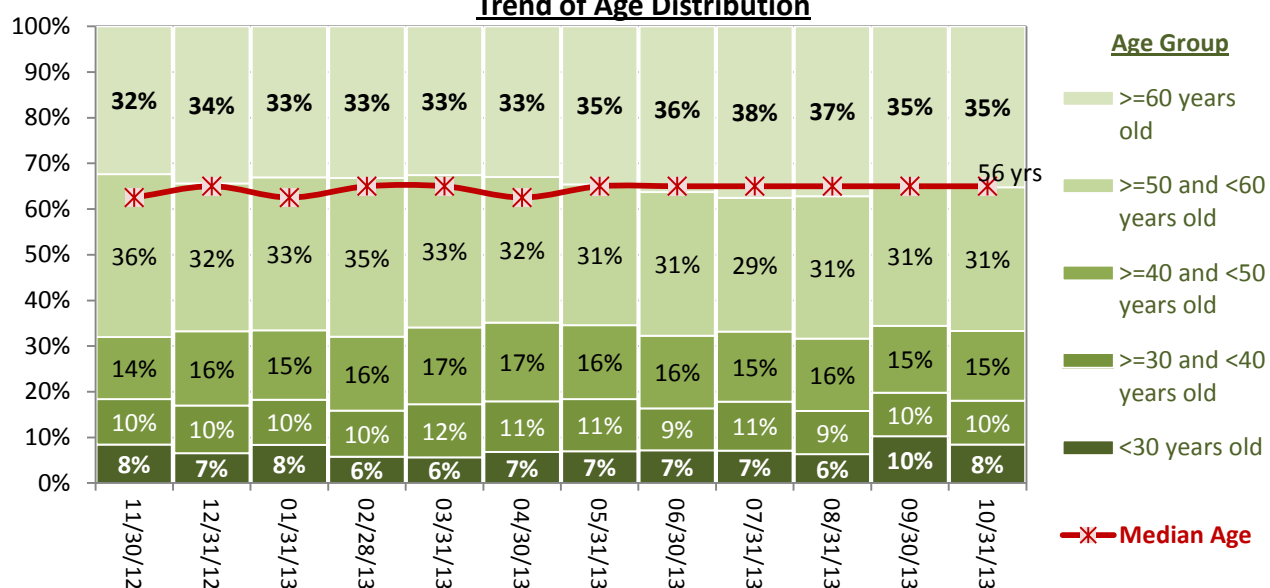
n=261



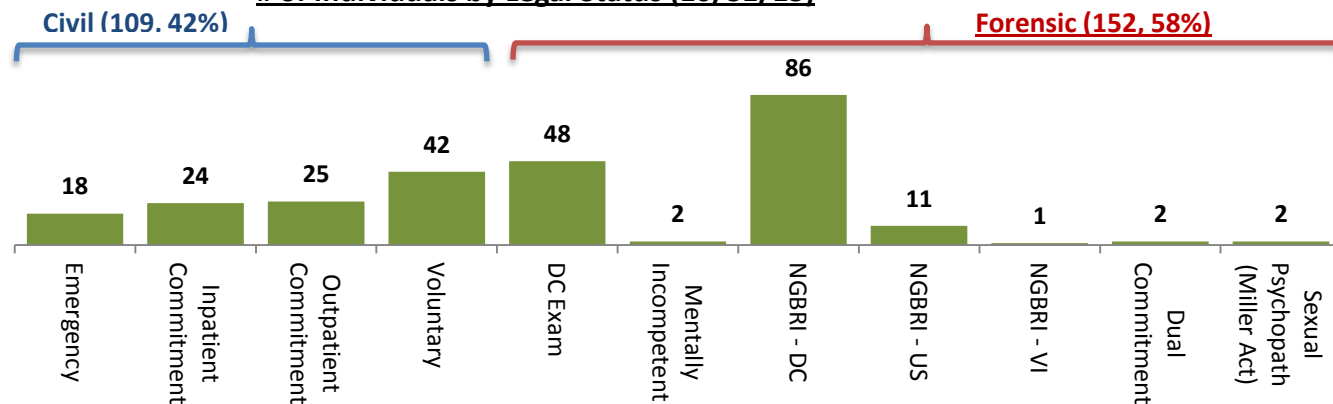
Trend of Gender Distribution



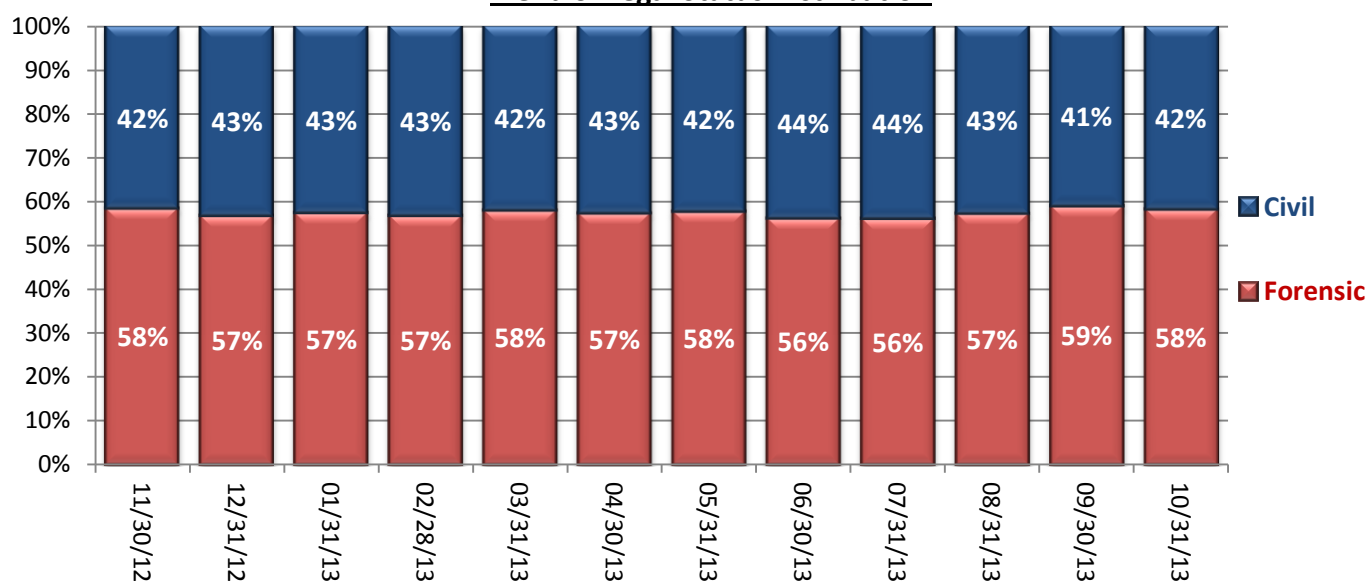
Trend of Age Distribution



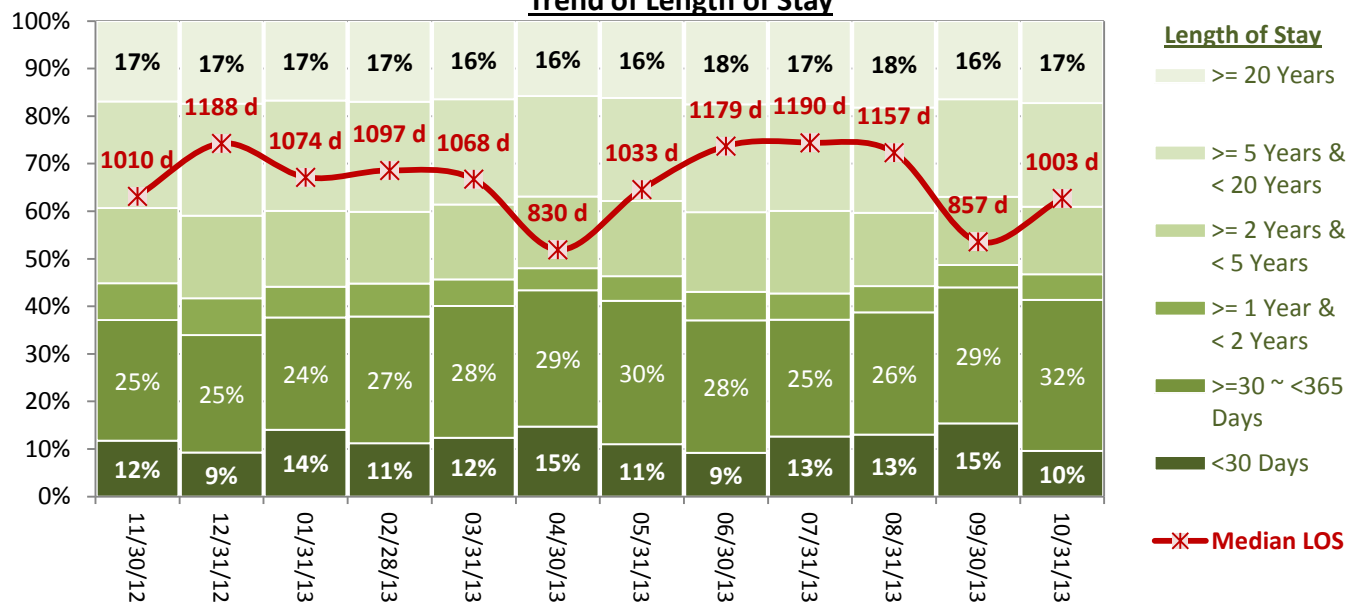
of Individuals by Legal Status (10/31/13)



Trend of Legal Status Distribution



Trend of Length of Stay



Performance Related Information for Staff & Managers

1. Census, Admissions, Discharges & Transfers

Data Source: Avatar

Updated as of 11/14/13

Category		Nov-12	Dec-12	Jan-13	Feb-13	Mar-13	Apr-13	May-13	Jun-13	Jul-13	Aug-13	Sep-13	Oct-13	Monthly Average	Total (12mths)	Figure
Admissions	Civil	18	14	22	14	23	19	17	16	16	18	21	16	18	214	Figure 1
	Forensic	18	11	17	14	20	25	14	12	21	17	25	15	17	209	
	Total	36	25	39	28	43	44	31	28	37	35	46	31	35	423	
Discharges	Civil	20	16	21	17	21	13	21	22	20	21	16	22	19	230	Figure 2
	Forensic	19	22	14	15	14	19	17	27	15	14	10	21	17	207	
	Total	39	38	35	32	35	32	38	49	35	35	26	43	36	437	
Net Gain During Month	Civil	-2	-2	1	-3	2	6	-4	-6	-4	-3	5	-6		-16	
	Forensic	-1	-11	3	-1	6	6	-3	-15	6	3	15	-6		2	
	Total	-3	-13	4	-4	8	12	-7	-21	2	0	20	-12		-14	
All Individuals on Roll at End of Month		272	259	263	259	267	279	272	251	253	253	273	261	264		
a. Present on Unit		270	255	259	254	261	273	267	246	247	251	268	256	259		
b. On AL		2	4	4	4	5	4	4	3	5	1	3	4	4		
c. On UL		0	0	0	1	1	2	1	2	1	1	2	1	1		
All Individuals on Roll: Daily Average during Month*		273	265	262	259	262	267	274	259	249	252	266	266	263		Figure 3
a. Present on Unit		267	260	258	255	258	264	270	253	244	248	263	261	259		
b. On AL		6	5	3	4	3	2	3	5	4	3	2	4	4		
c. On UL		0	0	1	0	1	1	1	1	1	1	1	1	0		
Patient Days**		8024	8059	8010	7152	8011	7918	8370	7597	7569	7693	7891	8101	7866	94395	
Inter-Unit Transfers during Month		11	7	8	3	17	17	8	3	11	5	10	4	9	104	Figure 4
Medical Leaves Initiated during Month	Emergency	17	9	24	23	12	10	17	12	10	10	10	20	15	174	
	Non-Emer	24	30	23	16	22	32	23	24	35	24	22	39	26	314	
	Total	41	39	47	39	34	42	40	36	45	34	32	59	41	488	
Non-Medical Leaves Initiated during Month		104	96	85	85	70	89	80	92	88	96	97	146	94	1128	
UL Initiated during Month		2	3	1	2	4	2	2	2	1	0	3	0	2	22	
Total Unique Patients Served during Month		306	297	298	298	294	310	310	299	286	285	299	299	298		
30 Day Readmission ***	Civil	2	2	3	0	2	3	3	0	1	0	0		1	16	
	Forensic	0	0	0	1	1	0	0	2	0	2	1		1	7	
	Total	2	2	3	1	3	3	3	2	1	2	1		2	23	

* This is the average number of individuals served on a given day for the respective month. Due to rounding from average calculation, numbers from its subcategories a, b, & c may not add up to the total number on this row.

** It counts the number of patients who are present on the unit and excludes those on authorized or unauthorized leave at 11:59pm on a given day.

*** Number of patients returning within 30 days of discharges that occurred during month.

Performance Related Information for Staff & Managers

2. Key Performance Indicators

Data Source: UI DB, ADR DB, Restraint/Seclusion Log, and Avatar

Updated as of 11/14/13

Category		Nov-12	Dec-12	Jan-13	Feb-13	Mar-13	Apr-13	May-13	Jun-13	Jul-13	Aug-13	Sep-13	Oct-13	Monthly Average	NPR* (Sep-11)	Figure
30 Day Readmit (Discharge Cohort)**	Civil	10.0%	12.5%	14.3%	0.0%	9.5%	23.1%	14.3%	0.0%	5.0%	0.0%	0.0%		7.6%		Figure 5
	Forensic	0.0%	0.0%	0.0%	6.7%	7.1%	0.0%	0.0%	7.4%	0.0%	14.3%	10.0%		3.7%		
	Combined	5.1%	5.3%	8.6%	3.1%	8.6%	9.4%	7.9%	4.1%	2.9%	5.7%	3.8%		5.7%	6.9%	
Number of Unusual Incidents		182	171	198	216	235	234	293	189	193	151	194	210	206		Figure 6
UI by Severity	Catastrophe	0	0	0	0	0	0	0	0	0	0	0	0	0		Figure 7
	High	26	18	26	17	19	15	22	17	15	9	21	29	20		
	Medium	63	59	60	87	106	89	118	66	67	43	101	89	79		
	Low	93	94	112	112	110	130	153	106	111	99	72	92	107		
Patient Unusual Incident Rate		21.8	18.7	21.8	28.1	27.8	27.2	33.7	24.0	24.8	19.2	22.3	24.4	24.5		Figure 8
Physical Assault Incident Rate		4.9	4.6	3.9	3.6	4.0	4.4	8.6	3.4	4.9	4.3	3.8	5.2	4.7		
Selected Types of Incidents	Physical Assault	39	37	31	26	32	35	72	26	37	33	30	42	37		Figure 9
	Psych Emergency	15	17	15	13	9	15	31	14	9	9	19	23	16		
	Fall	15	21	24	17	16	16	34	17	15	11	27	19	19		
	Injury	32	29	30	24	20	22	47	18	22	16	31	22	26		
Physical Assaults by Severity	High	8	4	4	1	3	2	9	2	5	5	7	5	5		Figure 10
	Medium	13	15	12	10	14	10	29	13	17	13	15	16	15		
	Low	18	18	15	15	15	23	34	11	15	15	8	21	17		
Patient Injury Rate***		0.25	0.12	0.12	0.00	0.00	0.00	0.12	0.26	0.40	0.13	0.38	0.12	0.16	0.34	Figure 11
Patients with Major Injuries***		2	1	1	0	0	0	1	2	3	1	3	1	1		
Total Patients Injured***		22	24	20	9	12	12	30	14	19	10	24	14	18		
Total Staff Injured***		11	8	11	15	12	10	19	6	6	8	9	13	11		Figure 12
Elopement Rate		0.25	0.37	0.12	0.28	0.50	0.25	0.24	0.26	0.13	0.00	0.38	0.00	0.32	0.12	Figure 13
Medication Variance Rate		1.50	0.50	1.87	6.01	3.50	2.53	4.18	4.61	5.15	4.03	5.20	2.59	3.43		Figure 14
Adverse Drug Reaction Rate		1.37	0.99	1.75	1.54	1.87	1.52	0.48	1.45	0.92	0.65	0.76	0.25	1.12		Figure 15
Missing Med-Admin Documentation		0.36%	0.32%	0.34%	0.37%	0.34%	0.32%	0.64%	0.52%	0.56%	0.34%	0.42%	0.60%	0.43%		Figure 16
Percent of Patients Restrained		0.0%	0.3%	0.0%	0.0%	0.0%	0.0%	0.0%	0.0%	0.0%	0.0%	0.0%	0.3%	0.1%	5.7%	Figure 18
Percent of Patients Secluded		0.7%	0.7%	1.3%	0.7%	0.3%	1.9%	1.9%	1.0%	0.3%	1.1%	1.3%	1.3%	1.1%	2.4%	
Restraint Hours Rate		0.000	0.002	0.000	0.000	0.000	0.000	0.000	0.000	0.000	0.000	0.000	0.011	0.001	0.65	Figure 19
Seclusion Hours Rate		0.016	0.049	0.043	0.042	0.005	0.054	0.038	0.119	0.021	0.046	0.017	0.017	0.039	0.55	

* National Public Rate, NASMHPD Research Institute, National Research Institute (NRI), Data as of June 2012, Published in January 2013.

** Percentage of patients returning within 30 days of discharges that occurred during month

*** Refer to the next page [UI & Medication]

**** As of September 2012, we are temporarily removing the emergency involuntary medication administration data from PRISM because we discovered a technical glitch in Avatar that made this data inaccurate. A fix is under way and this indicator will be reported again as reliable data becomes available.

Performance Related Information for Staff & Managers

3. Unusual Incident & Medication

Data Source: UI DB, ADR DB, and Avatar

Updated as of 11/14/13

Category	Nov-12	Dec-12	Jan-13	Feb-13	Mar-13	Apr-13	May-13	Jun-13	Jul-13	Aug-13	Sep-13	Oct-13	Monthly Average	Total (12mths)	NPR* (Sep-11)
Total Unusual Incidents**	182	171	198	216	235	234	293	189	193	151	194	210	206	2466	
Total Major Unusual Incidents	121	128	129	114	101	115	175	87	94	71	111	126	114	1372	
Patient Involved UI Only**	175	151	175	201	223	215	282	182	188	148	176	198	193	2314	
Patient UI Rate	21.8	18.7	21.8	28.1	27.8	27.2	33.7	24.0	24.8	19.2	22.3	24.4	24.5		
Unique Patients Involved in UI**	107	95	110	117	117	108	126	100	109	89	120	120	110	1318	
Selected Types of Incidents	Physical Assault	39	37	31	26	32	35	26	37	33	30	42	37	440	
	Psych Emergency	15	17	15	13	9	15	14	9	9	19	23	16	189	
	Fall	15	21	24	17	16	16	17	15	11	27	19	19	232	
	Injury	32	29	30	24	20	22	18	22	16	31	22	26	313	
Physical Assault Rate	4.9	4.6	3.9	3.6	4.0	4.4	8.6	3.4	4.9	4.3	3.8	5.2	4.7		
UI by Severity	Catastrophe	0	0	0	0	0	0	0	0	0	0	0	0	0	
	High	26	18	26	17	19	15	17	15	9	21	29	20	234	
	Medium	63	59	60	87	106	89	66	67	43	101	89	79	948	
	Low	93	94	112	112	110	130	106	111	99	72	92	107	1284	
Physical Assaults by Severity	High	8	4	4	1	3	2	9	2	5	7	5	5	55	
	Medium	13	15	12	10	14	10	29	13	17	13	16	15	177	
	Low	18	18	15	15	15	23	34	11	15	15	21	17	208	
Total Patients Injured***	22	24	20	9	12	12	30	14	19	10	24	14	18	210	
Patients with Major Injuries***	2	1	1	0	0	0	1	2	3	1	3	1	1	15	
Patient Injury Rate***	0.25	0.12	0.12	0.00	0.00	0.00	0.12	0.26	0.40	0.13	0.38	0.12	0.16		0.34
Total Staff Injured**	11	8	11	15	12	10	19	6	6	8	9	13	11		
Total UL Incident Reports	2	5	4	2	3	2	2	1	4	1	3	1	3	30	
Total ULs Documented in Avatar	2	3	1	2	4	2	2	2	1	0	3	0	2		
Elopement Rate	0.25	0.37	0.12	0.28	0.50	0.25	0.24	0.26	0.13	0.00	0.38	0.00	0.32		0.12
Med Variance (MV) Reports**	12	4	15	43	28	20	35	35	39	31	41	21	27	324	
MV Rate	1.50	0.50	1.87	6.01	3.50	2.53	4.18	4.61	5.15	4.03	5.20	2.59	3.43		
Adverse Drug Reactions Reports	11	8	14	11	15	12	4	11	7	5	6	2	9	106	
ADR Rate	1.37	0.99	1.75	1.54	1.87	1.52	0.48	1.45	0.92	0.65	0.76	0.25	1.12		
Total Med Administrations Scheduled	107901	111670	110726	97488	108150	103057	107694	102644	102303	102848	101049	95559		1251089	
Total Missing Documentations	393	356	375	356	370	326	690	537	572	348	427	570		5320	
Percent of Missing Documentation	0.36%	0.32%	0.34%	0.37%	0.34%	0.32%	0.64%	0.52%	0.56%	0.34%	0.42%	0.60%		0.43%	
Total STAT Orders	61	144	55	34	68	138	148	76	61	54	77	60	81		Figure 17
Total STAT Events****	35	77	30	23	38	71	71	45	35	29	41	32	44		
Total Individuals Involved >=1 STAT	21	21	28	10	16	23	35	19	19	20	25	22	22		
Total Patients with >=3 STAT Events	2	5	4	2	6	6	6	3	3	2	3	2	4		

* National Public Rate, NASMHPD Research Institute, National Research Institute (NRI), Data as of June 2012, Published in January 2013.

** Numbers may change if any additional UI report is made after the data run date from UI database (around the 15th of the following month).

*** Injury is broadly defined to include any type of injuries regardless of the cause or severity level. The total number of patients injured represents all of the reported injuries including minor injuries treated with first aid alone. However, the patient injury rate considers only the number of patient injuries that required beyond first-aid level treatment based on the NRI definition and the patient injury rate is the number of 'major' patient injuries per every 1000 inpatient days

**** One STAT event may involve more than one STAT order for the same patient. Any orders placed within 15 minute timeframe are considered to belong to one STAT event.

Performance Related Information for Staff & Managers

4. Restraint & Seclusion

Data Source: Restraint/Seclusion Log and UI DB (for # of total events and patients) and Avatar (for patient days/hours)

Updated as of 11/14/13

Category	Nov-12	Dec-12	Jan-13	Feb-13	Mar-13	Apr-13	May-13	Jun-13	Jul-13	Aug-13	Sep-13	Oct-13	Monthly Average	Total (12mths)	NPR* (Sep-11)
Number of Restraint Events	0	1	0	0	0	0	0	0	0	0	0	2	0.3	3	
Number of Unique Patients Restrained	0	1	0	0	0	0	0	0	0	0	0	1	0.2		
Percentage of Patients Restrained	0.0%	0.3%	0.0%	0.0%	0.0%	0.0%	0.0%	0.0%	0.0%	0.0%	0.0%	0.3%	0.1%		5.7%
Total Restraint Hours (h:mm)	0:00	0:20	0:00	0:00	0:00	0:00	0:00	0:00	0:00	0:00	0:00	2:08	0:12	2:28	
Restraint Hours Rate	0.000	0.002	0.000	0.000	0.000	0.000	0.000	0.000	0.000	0.000	0.000	0.011	0.001		0.65
Number of Seclusion Events	2	5	7	5	1	10	12	5	4	5	4	4	5.3	64	
Number of Unique Patients Secluded	2	2	4	2	1	6	6	3	1	3	4	4	3.2		
Percentage of Patients Secluded	0.7%	0.7%	1.3%	0.7%	0.3%	1.9%	1.9%	1.0%	0.3%	1.1%	1.3%	1.3%	1.1%		2.4%
Total Seclusion Hours (h:mm)	3:10	9:32	8:12	7:13	1:00	10:18	7:44	21:45	3:50	8:30	3:10	3:20	7:18	87:44	
Seclusion Hours Rate	0.016	0.049	0.043	0.042	0.005	0.054	0.038	0.119	0.021	0.046	0.017	0.017	0.039		0.55

* National Public Rate, NASMHPD Research Institute, National Research Institute (NRI), Data as of June 2012, Published in January 2013.

Performance Related Information for Staff & Managers

5. Major Incidents by Incident Location/Unit

Data Source: UI DB

Updated as of 11/14/13

Category		Nov-12	Dec-12	Jan-13	Feb-13	Mar-13	Apr-13	May-13	Jun-13	Jul-13	Aug-13	Sep-13	Oct-13	Monthly Average	Total (12mths)	Percent
Total Unusual Incidents		182	171	198	216	235	234	293	189	193	151	194	210	206	2466	
Total Major Incidents*		121	128	129	114	101	115	175	87	94	71	111	126	114	1372	100%
Major Incident Location	1A	4	7	7	4	9	5	11	4	10	12	10	7	8	90	7%
	1B	13	10	13	16	6	10	22	9	9	6	8	13	11	135	10%
	1C	9	11	17	6	8	13	8	4	11	4	10	12	9	113	8%
	1D	13	14	17	17	14	16	13	5	7	5	9	9	12	139	10%
	1E	8	18	15	10	20	32	30	12	8	3	19	5	15	180	13%
	1F	17	12	12	13	12	8	33	19	7	12	16	21	15	182	13%
	1G	20	9	7	4	1	5	8	10	13	4	3	12	8	96	7%
	2A	3	1	5	0	1	0	3	2	2	1	2	5	2	25	2%
	2B	7	8	2	1	1	4	1	3	1	0	3	2	3	33	2%
	2C	4	12	6	8	5	3	9	1	4	4	6	7	6	69	5%
	2D	8	10	7	10	2	7	14	10	6	1	6	13	8	94	7%
	TLC	4	9	8	15	14	7	18	7	9	13	12	11	11	127	9%
	Other	11	7	13	10	8	5	5	1	7	6	7	9	7	89	6%
Total Physical Assault Incidents		39	37	31	26	32	35	72	26	37	33	30	42	37	440	100%
Assault Incident Location	1A	1	2	1	1	2	2	3	0	2	6	1	3	2	24	5%
	1B	0	2	0	0	0	2	7	0	0	1	0	2	1	14	3%
	1C	4	1	3	1	1	5	5	0	5	3	3	4	3	35	8%
	1D	9	6	10	6	9	7	6	2	6	4	4	5	6	74	17%
	1E	2	8	6	2	8	4	8	3	4	2	6	2	5	55	13%
	1F	7	2	0	3	3	1	16	1	3	4	6	3	4	49	11%
	1G	6	2	2	0	1	1	2	6	7	1	1	5	3	34	8%
	2A	0	0	0	0	0	0	0	0	0	0	0	0	0	0	0%
	2B	2	3	0	1	0	1	0	0	1	0	0	0	1	8	2%
	2C	0	2	3	0	1	1	4	2	1	3	0	3	2	20	5%
	2D	5	8	4	4	1	6	9	8	2	0	2	8	5	57	13%
	TLC	2	1	2	8	6	4	11	4	6	8	6	6	5	64	15%
	Other	1	0	0	0	0	1	1	0	0	1	1	1	1	6	1%

Performance Related Information for Staff & Managers

5. Major Incidents by Incident Location/Unit

Data Source: UI DB

Updated as of 11/14/13

Category		Nov-12	Dec-12	Jan-13	Feb-13	Mar-13	Apr-13	May-13	Jun-13	Jul-13	Aug-13	Sep-13	Oct-13	Monthly Average	Total (12mths)	Percent
Total Fall Incidents		15	21	24	17	16	16	34	17	15	11	27	19	19	232	100%
Fall Incident Location	1A	3	4	3	0	3	1	8	3	2	4	3	2	3	36	16%
	1B	4	6	5	7	4	2	6	5	4	2	3	4	4	52	22%
	1C	1	1	1	1	0	1	1	1	3	0	3	2	1	15	6%
	1D	1	1	0	2	1	3	0	0	0	1	3	2	1	14	6%
	1E	1	1	1	0	2	1	1	0	1	0	4	1	1	13	6%
	1F	1	0	5	0	0	0	1	1	0	1	1	0	1	10	4%
	1G	1	0	0	0	0	2	0	1	0	0	0	0	0	4	2%
	2A	2	1	2	0	0	0	1	2	0	0	1	2	1	11	5%
	2B	0	4	0	1	0	1	1	1	0	0	2	1	1	11	5%
	2C	0	1	0	2	0	0	2	0	2	0	1	0	1	8	3%
	2D	0	1	1	1	0	0	5	2	0	1	2	1	1	14	6%
	TLC	1	0	2	2	5	3	7	1	0	0	3	3	2	27	12%
	Other	0	1	4	1	1	2	1	0	3	2	1	1	1	17	7%
Total Injury Incidents		32	29	30	24	20	22	47	18	22	16	31	22	26	313	100%
Injury Incident Location	1A	0	2	2	0	1	1	1	1	4	4	2	1	2	19	6%
	1B	3	3	0	4	2	2	6	2	1	1	3	0	2	27	9%
	1C	2	1	1	0	0	1	2	1	3	0	2	1	1	14	4%
	1D	6	6	8	8	6	4	4	1	4	3	6	4	5	60	19%
	1E	1	2	6	2	4	4	4	3	0	1	4	2	3	33	11%
	1F	8	2	0	2	1	1	9	2	2	3	4	1	3	35	11%
	1G	4	2	3	0	1	2	2	2	2	1	1	5	2	25	8%
	2A	1	0	1	0	0	0	2	0	0	0	1	1	1	6	2%
	2B	0	2	0	1	0	1	0	1	0	0	1	1	1	7	2%
	2C	3	2	0	1	1	0	3	0	2	1	1	1	1	15	5%
	2D	2	3	3	0	0	1	8	2	1	0	2	2	2	24	8%
	TLC	2	2	1	3	3	2	4	3	2	2	3	2	2	29	9%
	Other	0	2	5	3	1	3	2	0	1	0	1	1	2	19	6%

* Not every incident is a major incident. This counts only those incidents that were classified to be major based on the policy.

Performance Related Information for Staff & Managers

6. Demographic Information of Individuals in Care

Data Source: Avatar

Updated as of 11/14/13

Category	Sub-group	Nov-12	Dec-12	Jan-13	Feb-13	Mar-13	Apr-13	May-13	Jun-13	Jul-13	Aug-13	Sep-13	Oct-13	Monthly Average	Percent*
Total Active (on Roll) at End of Month*		272	259	263	259	267	279	272	251	253	253	273	261	264	
Gender	Female	72	70	71	71	77	80	78	67	73	70	70	68	72	27.4%
	Male	200	189	192	188	190	199	194	184	180	183	203	193	191	72.6%
Age	Median Age (Years)	55 yrs	56 yrs	55 yrs	56 yrs	56 yrs	55 yrs	56 yrs	56 yrs	56 yrs	56 yrs	56 yrs	56 yrs	56 yrs	
	<30 years old	23	17	22	15	15	19	19	18	18	16	28	22	19	7.3%
	>=30 and <40 years old	27	27	26	26	31	31	31	23	27	24	26	25	27	10.2%
	>=40 and <50 years old	37	42	40	42	45	48	44	40	39	40	40	40	41	15.7%
	>=50 and <60 years old	97	84	88	90	89	89	84	79	74	79	84	82	85	32.2%
	>=60 years old	88	89	87	86	87	92	94	91	95	94	95	92	91	34.5%
Legal Status of Individuals on Roll at End of Month	Emergency	19	21	20	19	22	29	31	27	19	18	27	18	23	8.5%
	Inpatient Commitment	23	21	21	21	23	21	21	21	23	20	22	24	22	8.3%
	Outpatient Commitment	21	24	23	26	23	24	18	18	19	24	21	25	22	8.4%
	Voluntary	50	46	48	46	44	45	45	44	50	46	42	42	46	17.3%
	Civil Sub-total	113	112	112	112	112	119	115	110	111	108	112	109	112	42.5%
	DC Exam	50	39	44	38	48	54	50	38	38	41	55	48	45	17.2%
	Mentally Incompetent	3	3	5	5	4	1	1	1	1	2	2	2	3	0.9%
	NGBRI - DC	93	92	90	92	89	90	91	87	89	88	89	86	90	34.0%
	NGBRI - US	9	9	8	8	10	10	10	10	9	9	10	11	9	3.6%
	NGBRI - VI	1	1	1	1	1	1	1	1	1	1	1	1	1	0.4%
Length of Stay	Dual Commitment	1	1	1	1	1	2	2	2	2	2	2	2	2	0.6%
	Sexual Psychopath (Miller Act)	2	2	2	2	2	2	2	2	2	2	2	2	2	0.8%
	Forensic Sub-total	159	147	151	147	155	160	157	141	142	145	161	152	151	57.5%
	Median LOS (Days)	1010 d	1188 d	1074 d	1097 d	1068 d	830 d	1033 d	1179 d	1190 d	1157 d	857 d	1003 d	1057 d	
	Average LOS (Days)	3103 d	3248 d	3152 d	3181 d	3093 d	2973 d	3065 d	3294 d	3217 d	3207 d	2963 d	3108 d	3134 d	
	<30 Days	32	24	37	29	33	41	30	23	32	33	42	25	32	12.0%
Length of Stay	>=30 ~ <365 Days	69	64	62	69	74	80	82	70	62	65	78	83	72	27.1%
	>= 1 Year & < 2 Years	21	20	17	18	15	13	14	15	14	14	13	14	16	5.9%
	>= 2 Years & < 5 Years	43	45	42	39	42	42	43	42	44	39	39	37	41	15.7%
	>= 5 Years & < 20 Years	61	61	61	60	59	59	59	57	57	56	56	57	59	22.2%
	>= 20 Years	46	45	44	44	44	44	44	44	44	46	45	45	45	16.9%

* Counts the total number of individuals who are on the hospital roll at end of each month. This number serves as denominator to calculate percentage of each group.