

**Government of the District of Columbia
Department of Behavioral Health (DBH)**

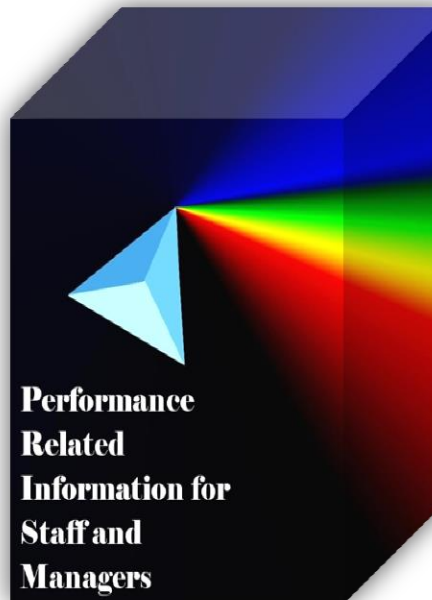


Performance Related Information for Staff and Managers

PRISM

June 2014

Table of Contents



1.	Admissions to SEH	1
2.	Discharges from SEH.....	1
3.	Average Daily Census	2
4.	Transfers	2
5.	30-Day Readmission Rate	2
6.	Unusual Incidents.....	3
7.	Patient-Involved Unusual Incidents.....	3
8.	Admissions vs. Patient UI Rate	4
9.	Unusual Incidents by Severity	4
10.	Selected Types of Incidents	4
11.	Physical Assaults by Severity	5
12.	Patient Injuries	5
13.	Staff Injuries.....	5
14.	Percent of Patients Restrained or Secluded.....	6
15.	Restraint Hours Rate & Seclusion Hours Rate	6
16.	Elopements	6
17.	Reported Medication Variance Events	7
18.	Reported Adverse Drug Reactions	7
19.	Percent of Missing Documentation on Med-Administration.....	8
20.	Number of STAT Events and Individuals Involved	8
21.	Demographics and Length of Stay	9

- Appendix 1) Table – Census, Admissions & Discharges*
- Appendix 2) Table – Key Performance Indicators*
- Appendix 3) Table – Unusual Incident & Medication*
- Appendix 4) Table – Restraint & Seclusion*
- Appendix 5) Table – Demographic Information of Individuals in Care*
- Appendix 6) Table – Unusual Incidents by Unit*

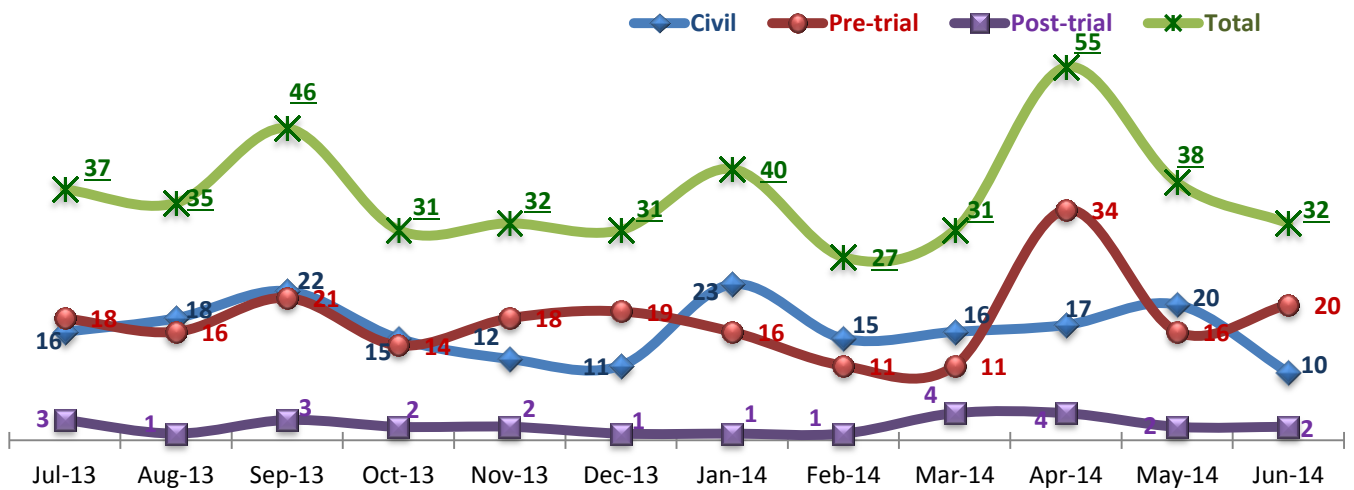
07/16/2014

Office of Statistics and Reporting (OSR)

Key Trends: Admission, Discharge, Transfer, Census, and Readmissions (1~6)

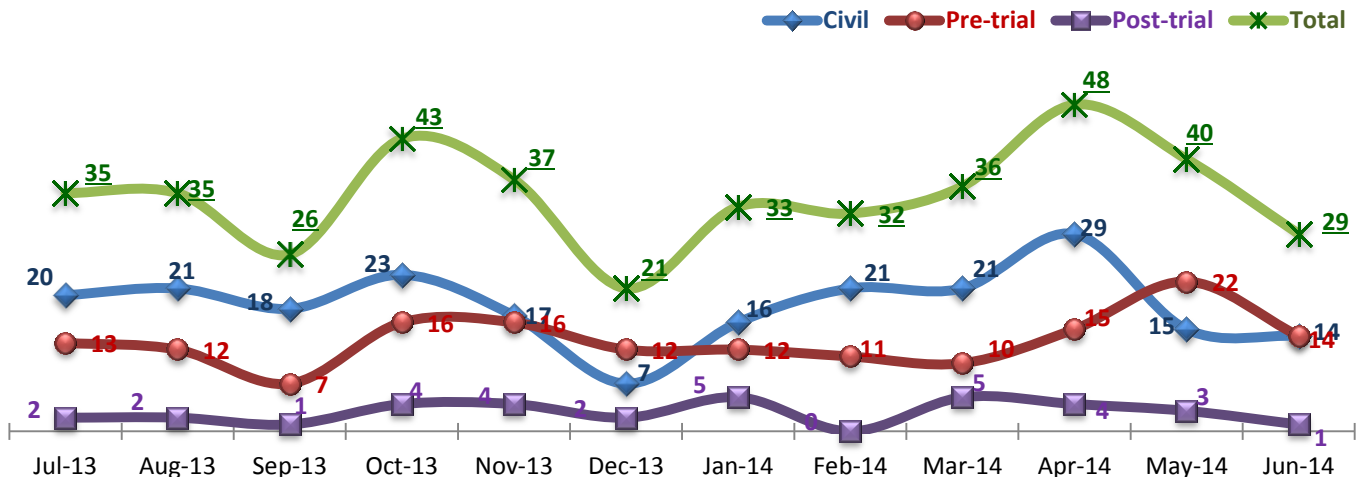
- The number of admissions and discharges reached the highest point in April 2014 and declined; June had 32 admissions and 29 discharges. However, the average daily census (ADC) increased over the past few months: from 264 per day in April to 268 in May and 270 in June.
- The number of emergency medical transfers increased to 20 in June 2014 from 18 in May and 8 in April.
- There were no individuals re-admitted within 30-days between December 2013 and March 2014 and one individual from April discharge (in post-trial legal status) and another one from May discharge (in pre-trial legal status) have been readmitted within 30-days. The 30-day readmission rate year-to-date in FY14 is 1.7%, which is far below the NPR (6.9%)¹.

1. Admissions to SEH



* Number of admissions to SEH inpatient program, including transfers from outpatient to inpatient program.

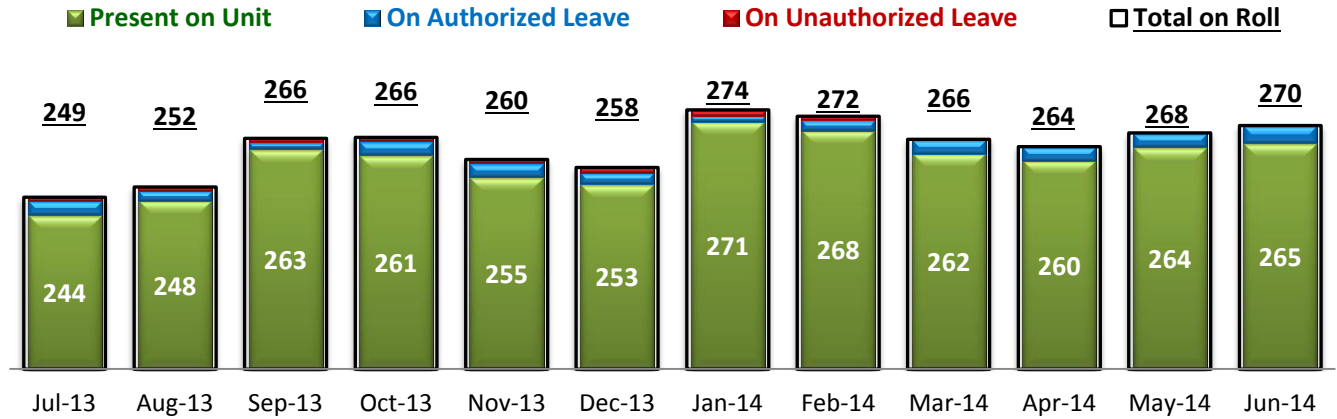
2. Discharges from SEH



* Number of discharges from SEH inpatient program, including transfers from inpatient to outpatient program.

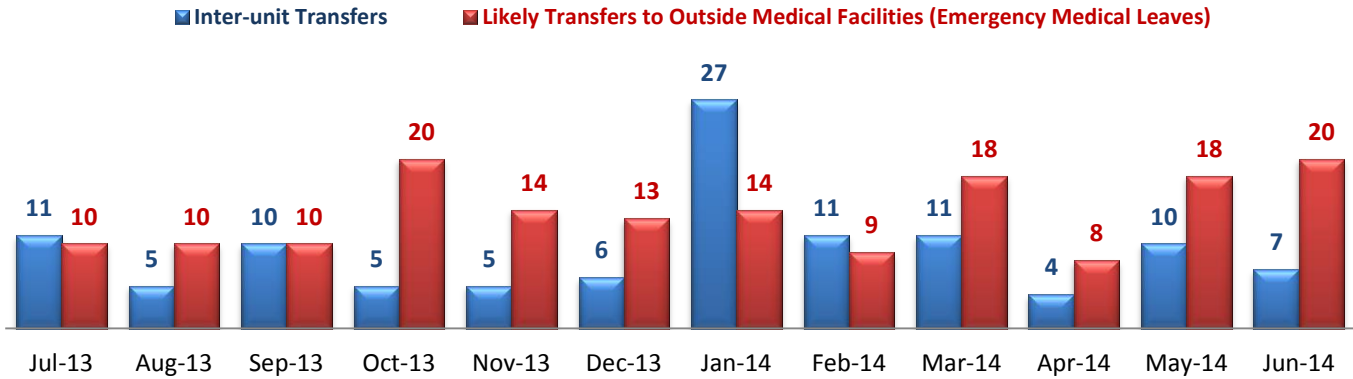
¹ NPR: National Public Rate as of June 2013 was published in November 2013 by National Association of State Mental Health Program Directors Research Institute (NRI), based on data collected from a number of state psychiatric hospitals nationwide.

3. Average Daily Census



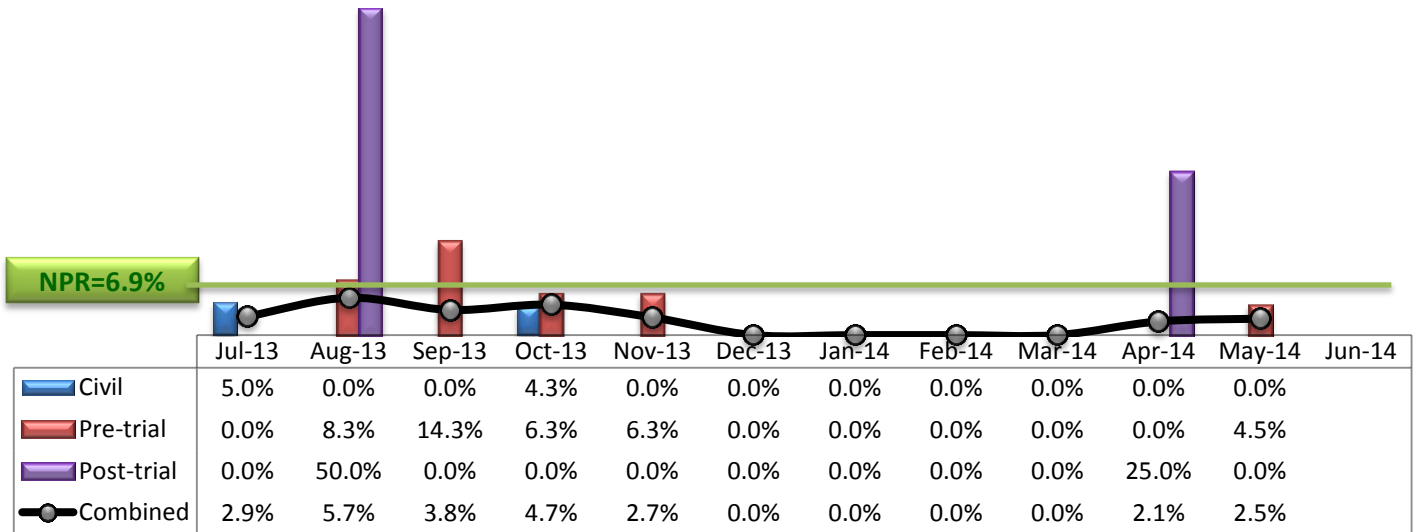
* Data above is the daily average number of individuals counted at 11:59 PM every day during each month.

4. Transfers



* Number of inter-unit transfers that occurred during month and number of emergency medical leaves that were initiated during month.

5. 30-Day Readmission Rate



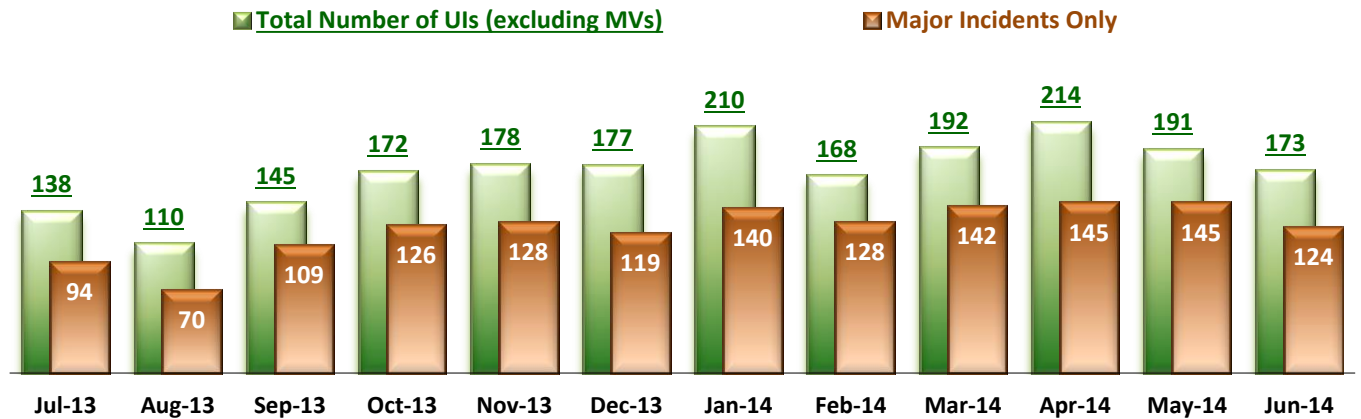
* Percent of discharges that returned to SEH within 30 days of discharges. It does not include those who may have been re-hospitalized at another psychiatric facility. This measure requires 30-day observation following discharge.

** The post-trial denominators (discharges) per month range only between one and six, making the monthly re-admission rate high when there is any. For example, in August 2013, there were two post trial discharges, of which one (50%) was readmitted within 30 days.

Key Trends: Unusual Incidents (6~16)

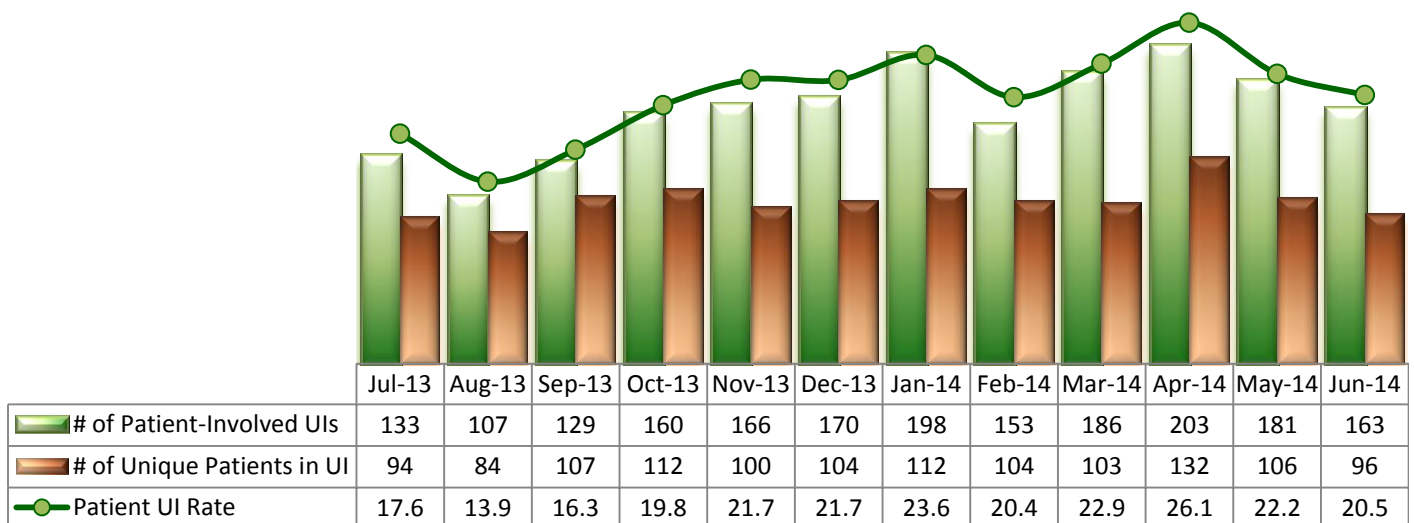
- Over the past few months, the total number of unusual incidents (UIs) and the patient UI rate decreased, which follows a decline in admissions. As of June 2014, a total of 173 UIs were reported whereas 214 and 191 UIs were reported, respectively, in April and May. The patient UI rate also decreased from 26.1 per 1000 patient days in April to 22.2 in May and 20.5 in June. Despite the decrease in the overall number of UIs, the number of high severity UIs slightly increased, from 32 in May 2014 to 35 in June.
- In June 2014, the number of physical assaults, falls, and injury incidents decreased but the frequency of incidents involving psychiatric emergencies remained the same. The number of aggressive behaviors that had been hovering around 60 for the past four months increased slightly in June (61).
- Both patient and staff injuries decreased but the patient major injury rate noticeably increased in June 2014.
- The percentage of individuals with one or more seclusion events continued to be above the national average (NPR 2.4%) since May 2014, but the total hours of seclusion (0.118 per 1000 patient hours) are far below the NPR (0.44).
- In June, there were two (2) elopements, and both involved the same individual.

6. Unusual Incidents



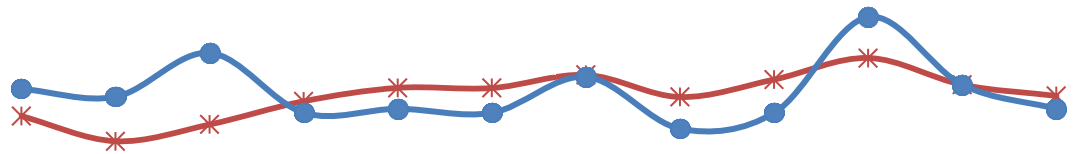
* As of May 2014, a medication or vital sign refusal incident is no longer considered to be an UI. In the above and below charts in this report, any medication or vital sign refusal incidents have been removed for a consistent assessment of the UI trend.

7. Patient-Involved Unusual Incidents



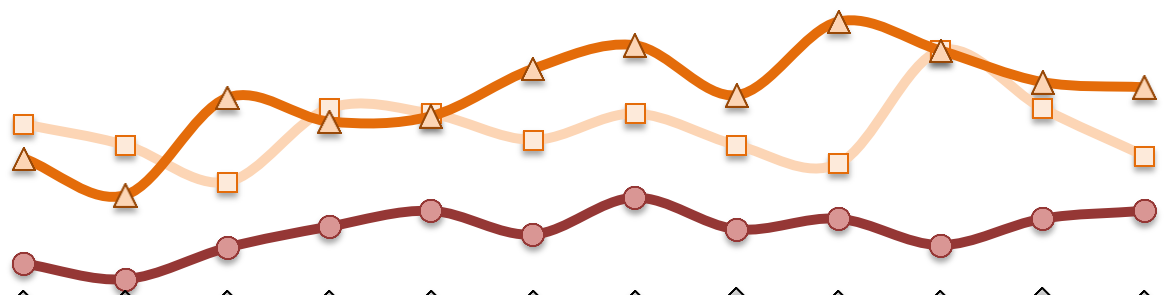
* The patient UI rate is the number of patient-involved unusual incidents reported for every 1000 inpatient days.

8. Admissions vs. Patient UI Rate



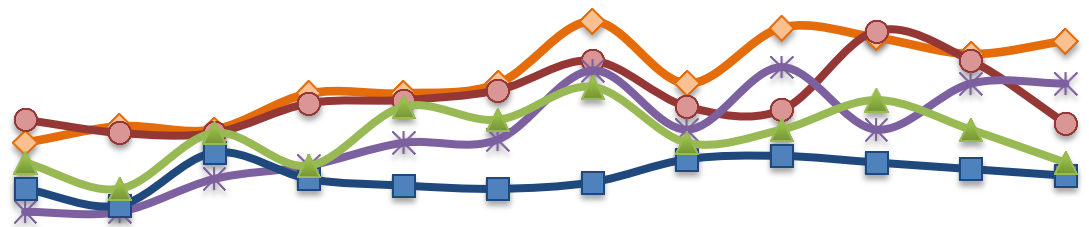
	Jul-13	Aug-13	Sep-13	Oct-13	Nov-13	Dec-13	Jan-14	Feb-14	Mar-14	Apr-14	May-14	Jun-14
—*— Patient UI Rate	17.6	13.9	16.3	19.8	21.7	21.7	23.6	20.4	22.9	26.1	22.2	20.5
—●— Admission	37	35	46	31	32	31	40	27	31	55	38	32

9. Unusual Incidents by Severity



	Jul-13	Aug-13	Sep-13	Oct-13	Nov-13	Dec-13	Jan-14	Feb-14	Mar-14	Apr-14	May-14	Jun-14
□ 1) Low	68	60	46	74	72	62	72	60	53	96	74	56
△ 2) Medium	55	41	78	69	71	89	98	79	107	96	84	82
● 3) High	15	9	21	29	35	26	40	28	32	22	32	35
◇ 4) Catstrp	0	0	0	0	0	0	0	1	0	0	1	0
Total UI	138	110	145	172	178	177	210	168	192	214	191	173

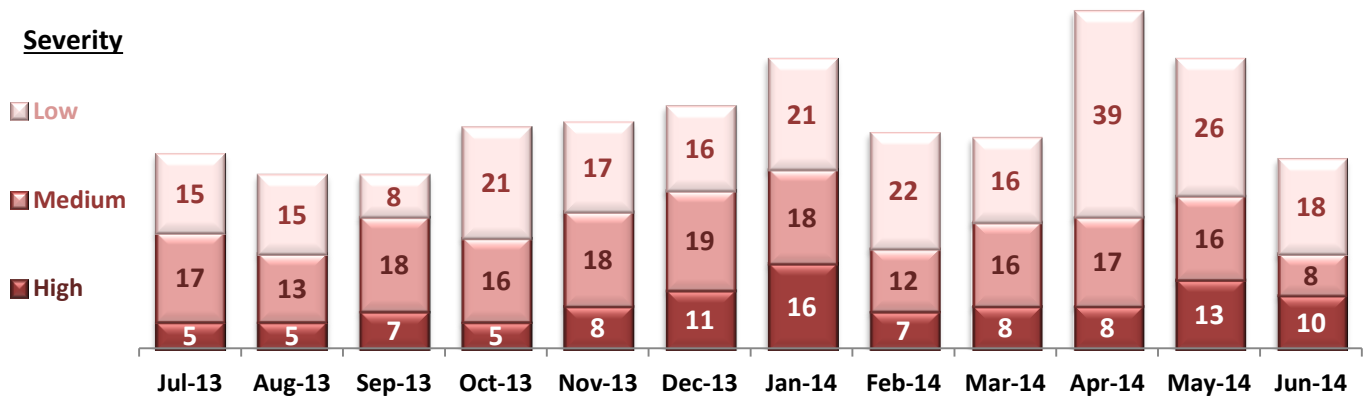
10. Selected Types of Incidents



	Jul-13	Aug-13	Sep-13	Oct-13	Nov-13	Dec-13	Jan-14	Feb-14	Mar-14	Apr-14	May-14	Jun-14
◇ Aggressive Behavior	30	35	34	45	45	48	67	48	65	62	57	61
● Physical Assault	37	33	33	42	43	46	55	41	40	64	55	36
* Pysch Emerg.	9	9	19	23	30	31	52	34	53	34	48	48
■ Fall	16	11	27	19	17	16	18	25	26	24	22	20
▲ Injury	24	16	33	23	41	37	47	30	34	43	34	24

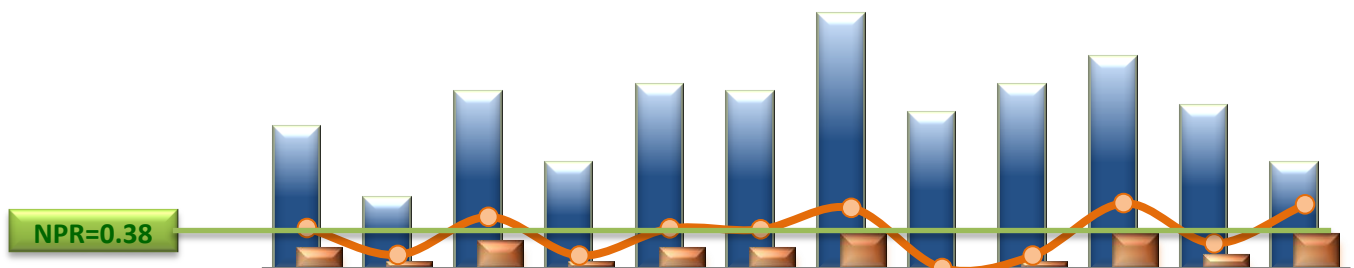
* These are incident types that are frequently reported. Some incidents may be counted in multiple categories. For example, a physical assault incident that accompanied psychiatric emergency and injury is counted under psychiatric emergency and injury as well as under physical assault. Injury is broadly defined to include any type of injuries regardless of the cause or severity level.

11. Physical Assaults by Severity



* Any physical assault that accompanies a code 13 or results in extensive injury needing off-unit treatment or transfer to ER is considered to be high severity, any physical assault that causes a minor injury that can be treated on unit is considered to be medium severity, and physical assault events that result in no injury are considered to be low severity.

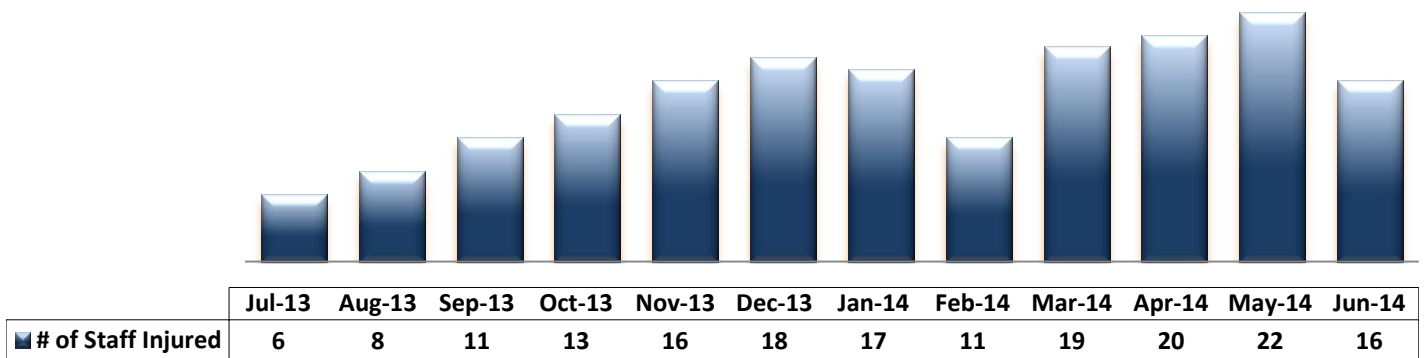
12. Patient Injuries



	Jul-13	Aug-13	Sep-13	Oct-13	Nov-13	Dec-13	Jan-14	Feb-14	Mar-14	Apr-14	May-14	Jun-14
Total Pts Injured	20	10	25	15	26	25	36	22	26	30	23	15
Major Pt Injuries*	3	1	4	1	3	3	5	0	1	5	2	5
Patient Injury Rate	0.40	0.13	0.51	0.12	0.39	0.38	0.60	0.00	0.12	0.64	0.24	0.63

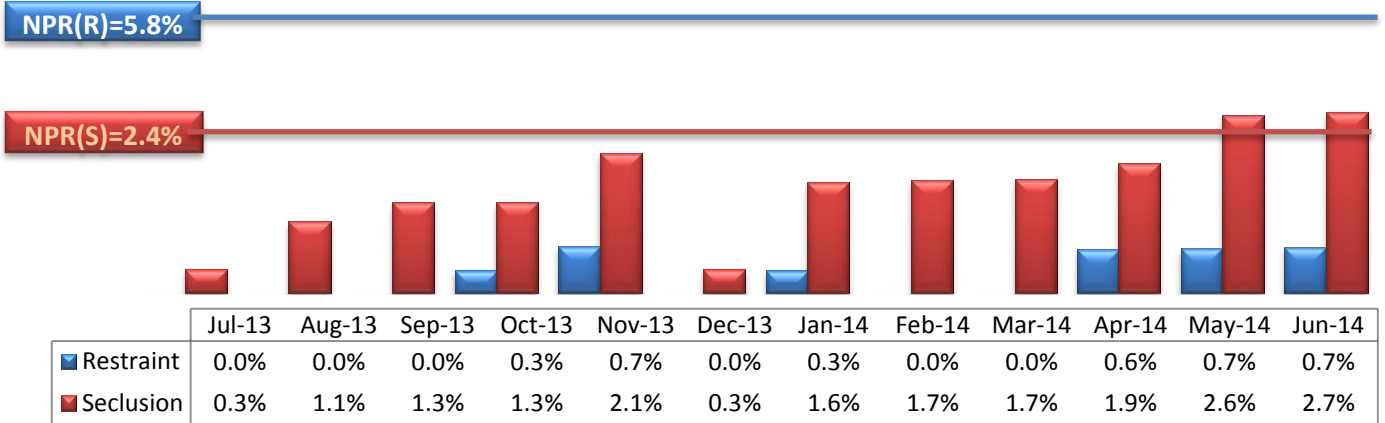
* Injury is broadly defined to include any type of injuries regardless of the cause or severity level. The total number of patients injured represents all of the reported injuries including minor injuries treated with first aid alone. However, the patient injury rate considers only the number of patient injuries that required beyond first-aid level treatment based on the NRI definition and the patient injury rate is the number of 'major' patient injuries per every 1000 inpatient days

13. Staff Injuries



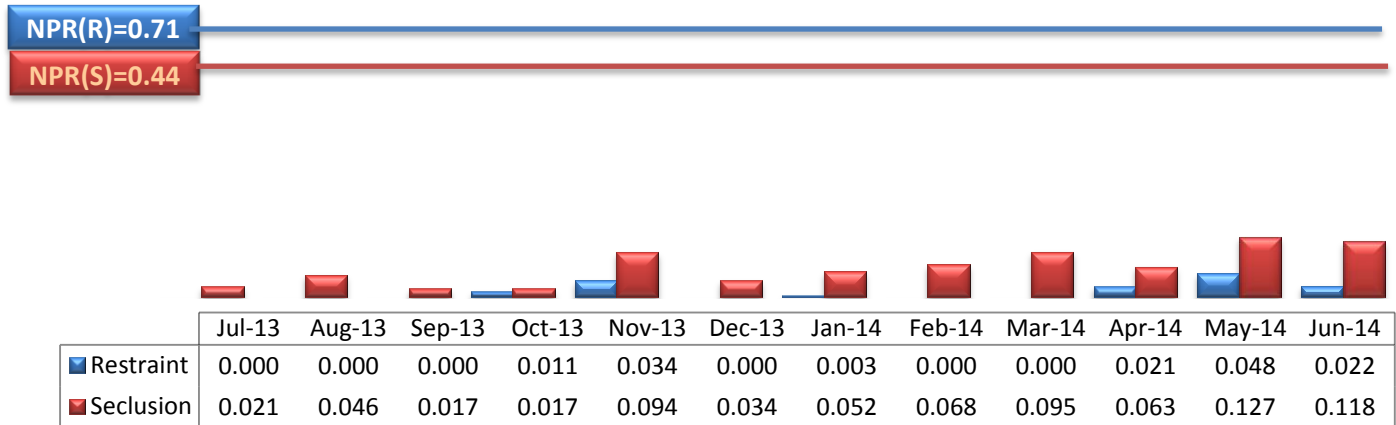
* Injury is broadly defined to include any type of injuries regardless of the cause or severity level. The total number of staff injured represents all of the reported staff injuries including minor injuries treated with first aid alone.

14. Percent of Patients Restrained or Secluded



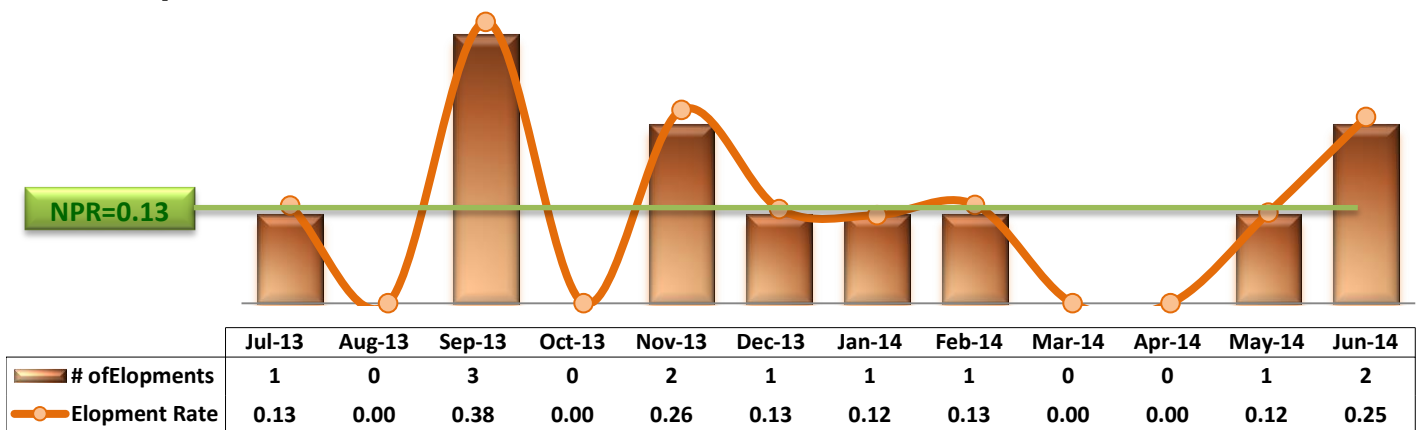
* Percent of unique patients who were restrained at least once and percent of unique patients who were secluded at least once. The denominator includes all individuals who were served in care >=1 day during month.

15. Restraint Hours Rate & Seclusion Hours Rate



* Restraint/Seclusion Hours Rate: Number of hours spent in restraint/seclusion for every 1000 inpatient hours.

16. Elopements



* It counts the total number of unauthorized leaves for any duration that were initiated during month and were recorded in Avatar. The elopement rate is the number of those unauthorized leaves that occurred for every 1000 inpatient days.

Key Trends: Medication Documentation, Medication Variance, ADR, and STAT (17~20)

- The rate of missing documentation on medication administration decreased in June 2014.
- While the number of psychiatric emergency incidents remained the same in June, the number of STAT events decreased from 51 in May to 40 in June 2014. The number of unique individuals involved in one or more STAT events as well as those involved in 3 or more events also decreased.

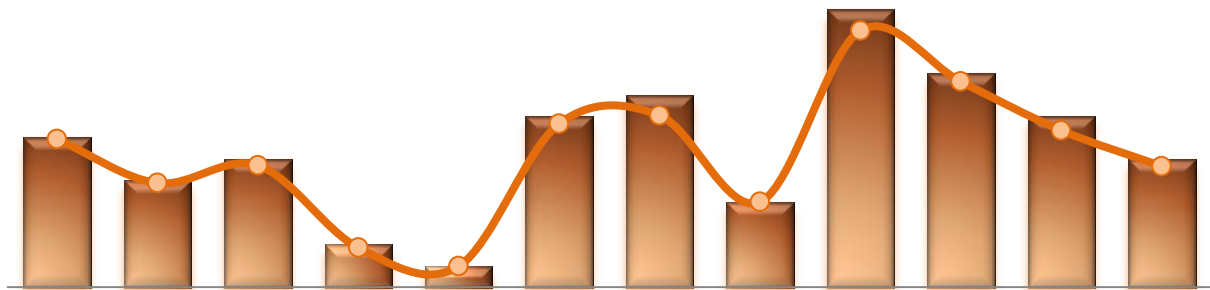
17. Reported Medication Variance Events



	Jul-13	Aug-13	Sep-13	Oct-13	Nov-13	Dec-13	Jan-14	Feb-14	Mar-14	Apr-14	May-14	Jun-14
# of MV Events	39	31	41	21	23	8	20	37	22	53	31	40
MV Rate	5.15	4.03	5.20	2.59	3.01	1.02	2.38	4.92	2.71	6.80	3.79	5.04

* MV Rate: Number of reported medication variance events that occurred for every 1000 inpatient days.

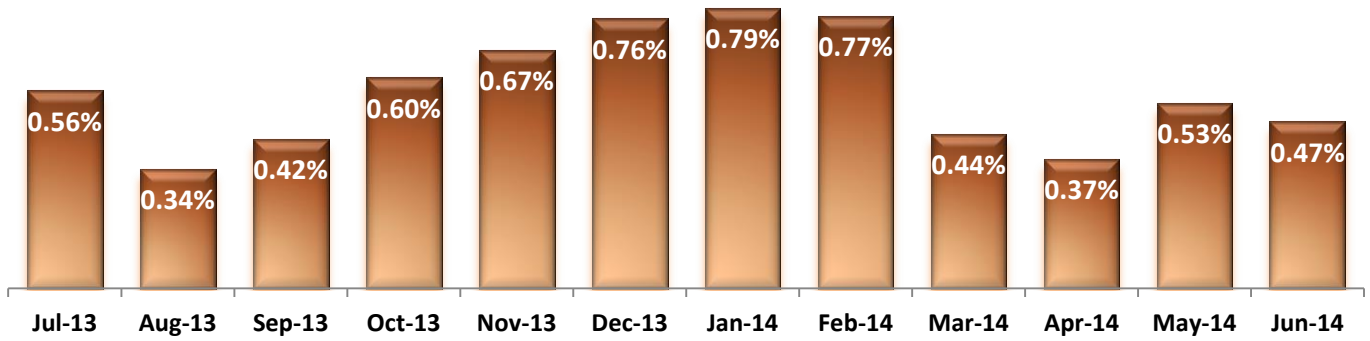
18. Reported Adverse Drug Reactions



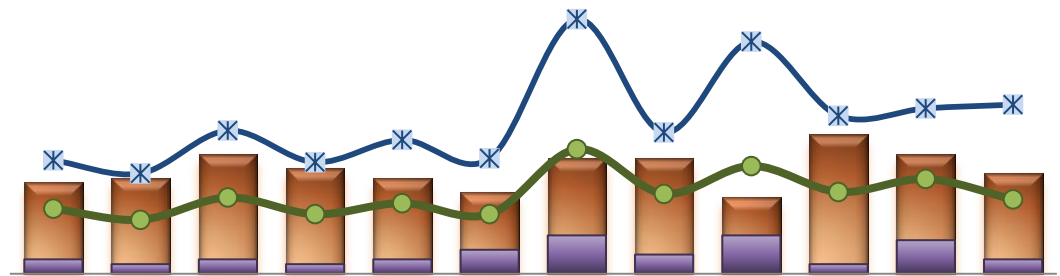
	Jul-13	Aug-13	Sep-13	Oct-13	Nov-13	Dec-13	Jan-14	Feb-14	Mar-14	Apr-14	May-14	Jun-14
# of ADRs	7	5	6	2	1	8	9	4	13	10	8	6
ADR Rate	0.92	0.65	0.76	0.25	0.13	1.02	1.07	0.53	1.60	1.28	0.98	0.76

* ADR Rate: Number of reported adverse drug reaction events that occurred for every 1000 inpatient days.

19. Percent of Missing Documentation on Med-Administration



20. Number of STAT Events and Individuals Involved

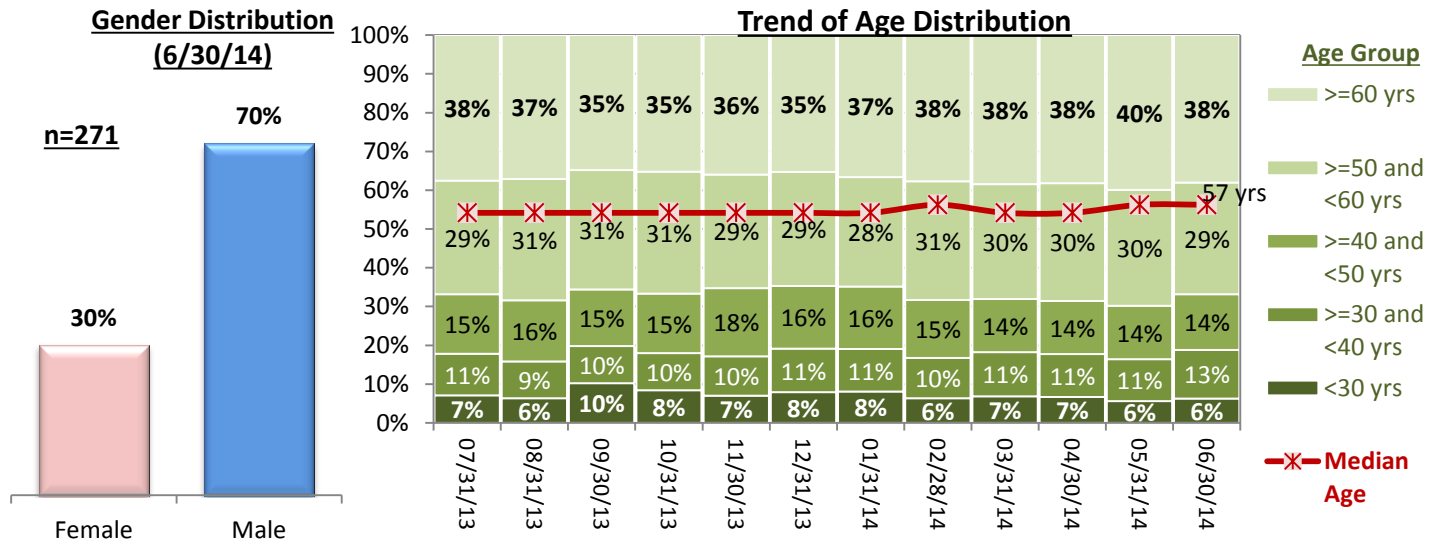


	Jul-13	Aug-13	Sep-13	Oct-13	Nov-13	Dec-13	Jan-14	Feb-14	Mar-14	Apr-14	May-14	Jun-14
IICs w/ >=1 STAT	19	20	25	22	20	17	24	24	16	29	25	21
IICs w/ >=3 STAT Events	3	2	3	2	3	5	8	4	8	2	7	3
Total STAT Events	35	29	41	32	38	32	67	43	58	44	51	40
Total STAT Orders	61	54	77	60	72	62	137	76	125	85	89	91

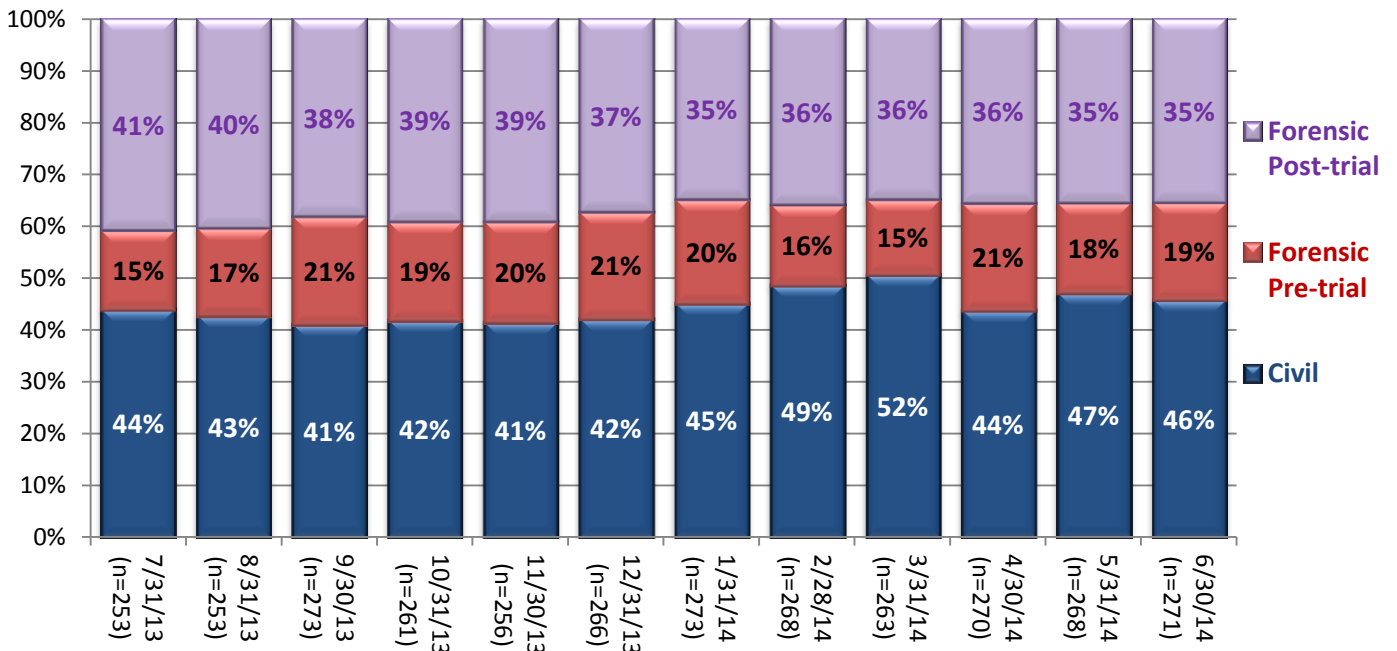
Key Trends: Demographics, Legal Status, and Length of Stay (21)

- The gender distribution slightly changes month by month but overall about 3 out of 10 individuals are female.
- The percentage of those 60 years or older slightly declined in June 2014 but the median age remained at 57 years old, meaning 50% of the Hospital population are above 57 years old. This is the highest level since we started tracking the median age data.
- The median length of stay (LOS) of individuals remaining in care continued to decrease gradually since February 2014, and was 17 months as of June 30, 2014. Recent admissions have shorter LOS and a high number of admissions over the past 6 months has contributed to an increase of the proportion of recent admissions among the total population in care, lowering the median LOS.

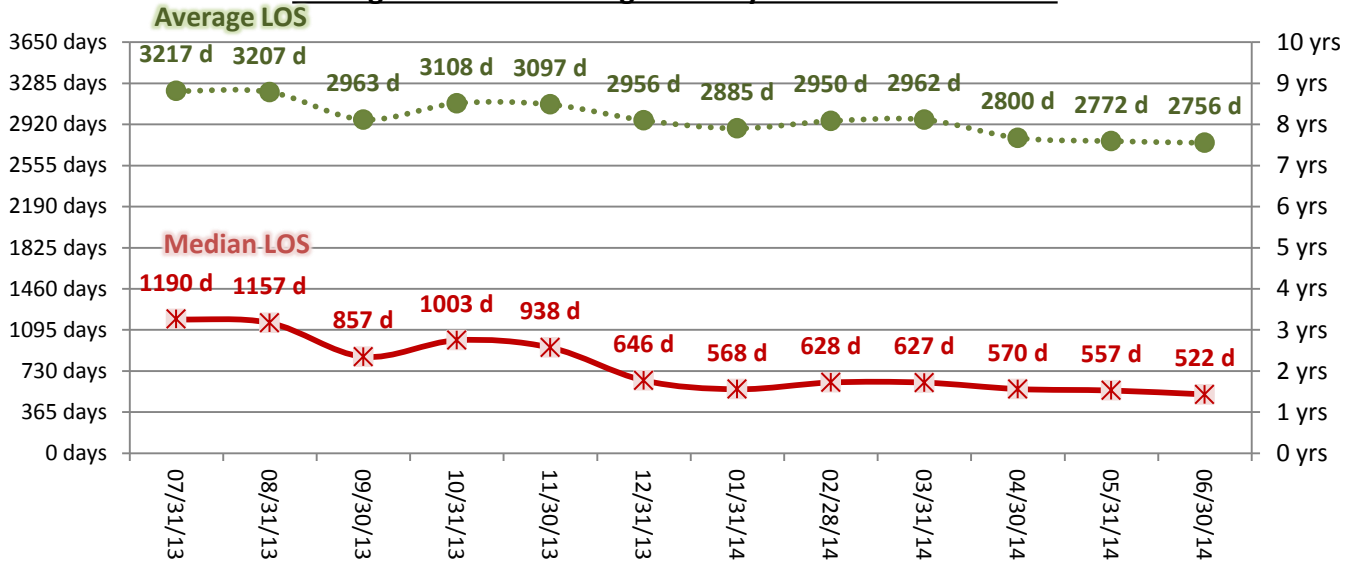
21. Demographics and Length of Stay



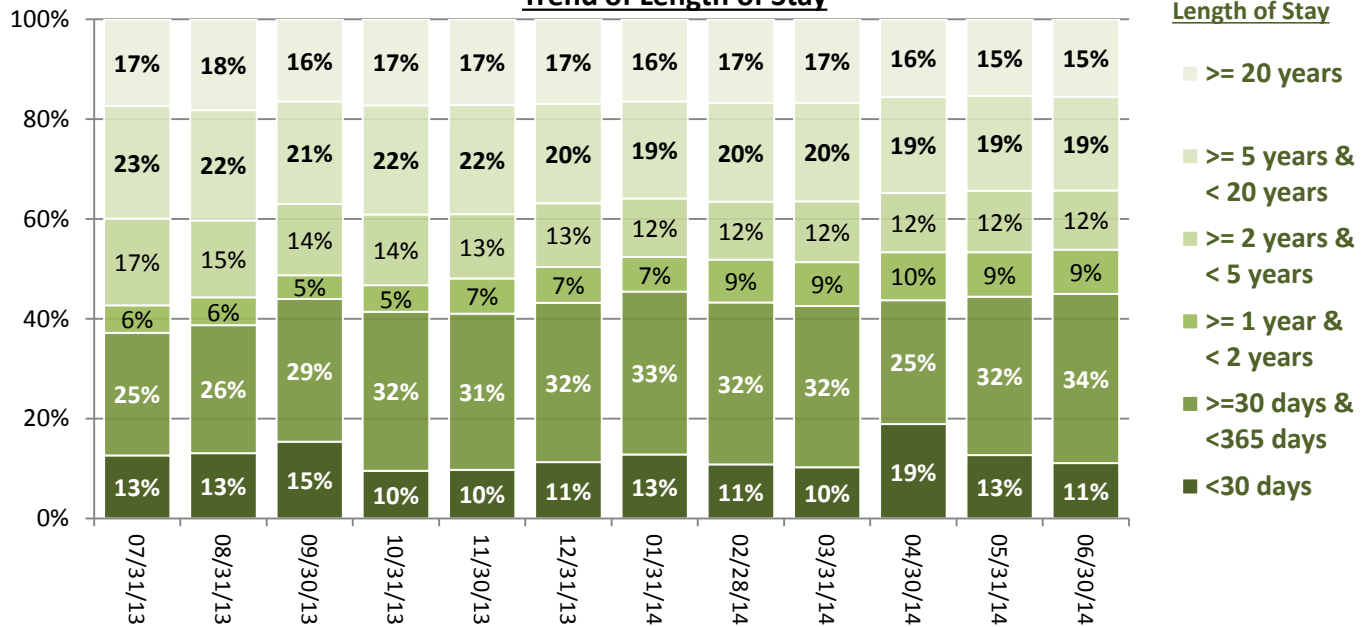
Trend of Legal Status Distribution



Average and Median Length of Stay for Individuals in Care



Trend of Length of Stay



Performance Related Information for Staff & Managers

1. Census, Admissions, Discharges & Transfers

Data Source: Avatar

Updated as of 07/14/14

Category	Jul-13	Aug-13	Sep-13	Oct-13	Nov-13	Dec-13	Jan-14	Feb-14	Mar-14	Apr-14	May-14	Jun-14	Monthly Average	Total (12mths)	Figure	
Admissions	Civil	16	18	22	15	12	11	23	15	16	17	20	10	16	195	Figure 1
	Pre-trial	18	16	21	14	18	19	16	11	11	34	16	20	18	214	
	Post-trial	3	1	3	2	2	1	1	1	4	4	2	2	2	26	
	Total	37	35	46	31	32	31	40	27	31	55	38	32	36	435	
Discharges	Civil	20	21	18	23	17	7	16	21	21	29	15	14	19	222	Figure 2
	Pre-trial	13	12	7	16	16	12	12	11	10	15	22	14	13	160	
	Post-trial	2	2	1	4	4	2	5	0	5	4	3	1	3	33	
	Total	35	35	26	43	37	21	33	32	36	48	40	29	35	415	
Net Increase During Month	Civil	-4	-3	4	-8	-5	4	7	-6	-5	-12	5	-4		-27	
	Pre-trial	5	4	14	-2	2	7	4	0	1	19	-6	6		54	
	Post-trial	1	-1	2	-2	-2	-1	-4	1	-1	0	-1	1		-7	
	Total	2	0	20	-12	-5	10	7	-5	-5	7	-2	3		20	
All Individuals on Roll at End of Month	253	253	273	261	256	266	273	268	263	270	268	271	265			
a. Present on Unit	247	251	268	256	250	262	269	263	256	268	260	267	260			
b. On AL	5	1	3	4	5	2	3	5	7	2	8	4	4			
c. On UL	1	1	2	1	1	2	1	0	0	0	0	0	1			
All Individuals on Roll: Daily Average during Month*	249	252	266	266	260	258	274	272	266	264	268	270	264			
a. Present on Unit	244	248	263	261	255	253	271	268	262	260	264	265	259		Figure 3	
b. On AL	4	3	2	4	4	3	2	3	4	4	4	5	4			
c. On UL	1	1	1	1	1	1	2	1	0	0	0	0	0			
Patient Days**	7569	7693	7891	8101	7649	7844	8394	7514	8115	7789	8171	7941	7889	94671		
Inter-Unit Transfers during Month	11	5	10	5	5	6	27	11	11	4	10	7	9	112	Figure 4	
Medical Leaves Initiated during Month	Emergency	10	10	10	20	14	13	14	9	18	8	18	20	14	164	
	Non-Emer	35	24	22	39	27	34	25	32	25	30	34	81	34	408	
	Total	45	34	32	59	41	47	39	41	43	38	52	101	48	572	
Non-Medical Leaves Initiated during Month	88	96	97	146	121	138	142	141	175	147	230	439	163	1960		
UL Initiated during Month	1	0	3	0	2	1	1	1	0	0	1	2	1	12		
Total Unique Patients Served during Month	286	285	299	299	291	287	306	300	299	315	306	300	298			
30 Day Readmission***	Civil	1	0	0	1	0	0	0	0	0	0		0	2		
	Pre-trial	0	1	1	1	1	0	0	0	0	1		0	5		
	Post-trial	0	1	0	0	0	0	0	0	0	1		0	2		
	Total	1	2	1	2	1	0	0	0	0	1	1	1	9		

* This is the average number of individuals served on a given day for the respective month. Due to rounding from average calculation, numbers from its subcategories a, b, & c may not add up to the total number on this row.

** It counts the number of patients who are present on the unit and excludes those on authorized or unauthorized leave at 11:59pm on a given day.

*** Number of patients returning within 30 days of discharges that occurred during month.

Performance Related Information for Staff & Managers

2. Key Performance Indicators

Data Source: UI DB, MV DB, ADR DB, Restraint/Seclusion Log, and Avatar

Updated as of 07/14/14

Category	Jul-13	Aug-13	Sep-13	Oct-13	Nov-13	Dec-13	Jan-14	Feb-14	Mar-14	Apr-14	May-14	Jun-14	Monthly Average	NPR* (Jun-13)	Figure
30 Day Readmit (Discharge Cohort)**	Civil	5.0%	0.0%	0.0%	4.3%	0.0%	0.0%	0.0%	0.0%	0.0%	0.0%	0.0%	1.0%		Figure 5
	Pre-trial	0.0%	8.3%	14.3%	6.3%	6.3%	0.0%	0.0%	0.0%	0.0%	0.0%	4.5%	3.4%		
	Post-trial	0.0%	50.0%	0.0%	0.0%	0.0%	0.0%	0.0%	N/A	0.0%	25.0%	0.0%	6.6%		
	Combined	2.9%	5.7%	3.8%	4.7%	2.7%	0.0%	0.0%	0.0%	0.0%	2.1%	2.5%	2.4%	6.9%	
Number of Unusual Incidents*	138	110	145	172	178	177	210	168	192	214	191	173	172		Figure 6
Patient Unusual Incident Rate	17.6	13.9	16.3	19.8	21.7	21.7	23.6	20.4	22.9	26.1	22.2	20.5	20.6		Figure 7
UI by Severity	Catastrophe	0	0	0	0	0	0	1	0	0	1	0	0		Figure 9
	High	15	9	21	29	35	40	28	32	22	32	35	27		
	Medium	55	41	78	69	71	98	79	107	96	84	82	79		
	Low	68	60	46	74	72	62	72	60	53	96	74	66		
Physical Assault Incident Rate	4.9	4.3	4.2	5.2	5.6	5.9	6.6	5.5	4.9	8.2	6.7	4.5	5.5		
Selected Types of Incidents	Physical Assault	37	33	33	42	43	46	55	41	40	64	55	36	44	Figure 10
	Aggressive Behav.	30	35	34	45	45	48	67	48	65	62	57	61	50	
	Psych Emergency	9	9	19	23	30	31	52	34	53	34	48	48	33	
	Fall	16	11	27	19	17	16	18	25	26	24	22	20	20	
	Injury	24	16	33	23	41	37	47	30	34	43	34	24	32	
Physical Assaults by Severity	High	5	5	7	5	8	11	16	7	8	8	13	10	13	Figure 11
	Medium	17	13	18	16	18	19	18	12	16	17	16	8	16	
	Low	15	15	8	21	17	16	21	22	16	39	26	18	20	
Patient Injury Rate***	0.40	0.13	0.51	0.12	0.39	0.38	0.60	0.00	0.12	0.64	0.24	0.63	0.35	0.38	Figure 12
Patients with Major Injuries***	3	1	4	1	3	3	5	0	1	5	2	5	3		
Total Patients Injured***	20	10	25	15	26	25	36	22	26	30	23	15	23		
Total Staff Injured***	6	8	11	13	16	18	17	11	19	20	22	16	15		Figure 13
Elopement Rate	0.13	0.00	0.38	0.00	0.26	0.13	0.12	0.13	0.00	0.00	0.12	0.25	0.14	0.13	Figure 16
Medication Variance Rate	5.15	4.03	5.20	2.59	3.01	1.02	2.38	4.92	2.71	6.80	3.79	5.04	3.87		Figure 17
Adverse Drug Reaction Rate	0.92	0.65	0.76	0.25	0.13	1.02	1.07	0.53	1.60	1.28	0.98	0.76	0.83		Figure 18
Missing Med-Admin Documentation	0.56%	0.34%	0.42%	0.60%	0.67%	0.76%	0.79%	0.77%	0.44%	0.37%	0.53%	0.47%	0.56%		Figure 19
Percent of Patients Restrained	0.0%	0.0%	0.0%	0.3%	0.7%	0.0%	0.3%	0.0%	0.0%	0.6%	0.7%	0.7%	0.3%	5.8%	Figure 14
Percent of Patients Secluded	0.3%	1.1%	1.3%	1.3%	2.1%	0.3%	1.6%	1.7%	1.7%	1.9%	2.6%	2.7%	1.6%	2.4%	
Restraint Hours Rate	0.000	0.000	0.000	0.011	0.034	0.000	0.003	0.000	0.000	0.021	0.048	0.022	0.012	0.71	Figure 15
Seclusion Hours Rate	0.021	0.046	0.017	0.017	0.094	0.034	0.052	0.068	0.095	0.063	0.127	0.118	0.063	0.44	

* National Public Rate, NASMHPD Research Institute, National Research Institute (NRI), Data as of June 2013, Published in November 2013.

** Percentage of patients returning within 30 days of discharges that occurred during month

*** Refer to the next page [UI & Medication]

Performance Related Information for Staff & Managers

3. Unusual Incident & Medication

Data Source: UI DB, MV DB, ADR DB, and Avatar

Updated as of 07/14/14

Category		Jul-13	Aug-13	Sep-13	Oct-13	Nov-13	Dec-13	Jan-14	Feb-14	Mar-14	Apr-14	May-14	Jun-14	Monthly Average	Total (12mths)	NPR* (Jun-13)
Unusual Incidents (excluding MV)**	Total UIs	138	110	145	172	178	177	210	168	192	214	191	173	172	2068	
	Major UIs Only	94	70	109	126	128	119	140	128	142	145	145	124	123	1470	
	Pt Involved UI Only	133	107	129	160	166	170	198	153	186	203	181	163	162	1949	
	Patient UI Rate	17.6	13.9	16.3	19.8	21.7	21.7	23.6	20.4	22.9	26.1	22.2	20.5	20.6		
Unique Pts Involved in UI		94	84	107	112	100	104	112	104	103	132	106	96	105	1254	
Selected Types of Incidents	Physical Assault	37	33	33	42	43	46	55	41	40	64	55	36	44	525	
	Aggressive Behavior	30	35	34	45	45	48	67	48	65	62	57	61	50	597	
	Psych Emergency	9	9	19	23	30	31	52	34	53	34	48	48	33	390	
	Fall	16	11	27	19	17	16	18	25	26	24	22	20	20	241	
	Injury	24	16	33	23	41	37	47	30	34	43	34	24	32	386	
Physical Assault Rate		4.9	4.3	4.2	5.2	5.6	5.9	6.6	5.5	4.9	8.2	6.7	4.5	5.5		
UI by Severity	Catastrophe	0	0	0	0	0	0	0	1	0	0	1	0	0	2	
	High	15	9	21	29	35	26	40	28	32	22	32	35	27	324	
	Medium	55	41	78	69	71	89	98	79	107	96	84	82	79	949	
	Low	68	60	46	74	72	62	72	60	53	96	74	56	66	793	
Physical Assaults by Severity	High	5	5	7	5	8	11	16	7	8	8	13	10	13	103	
	Medium	17	13	18	16	18	19	18	12	16	17	16	8	16	188	
	Low	15	15	8	21	17	16	21	22	16	39	26	18	20	234	
Total Patients Injured***		20	10	25	15	26	25	36	22	26	30	23	15	23	273	
Patients with Major Injuries***		3	1	4	1	3	3	5	0	1	5	2	5	3	33	
Patient Injury Rate***		0.40	0.13	0.51	0.12	0.39	0.38	0.60	0.00	0.12	0.64	0.24	0.63	0.35		0.38
Total Staff Injured**		6	8	11	13	16	18	17	11	19	20	22	16	15		
Total UIs Documented in Avatar		1	0	3	0	2	1	1	1	0	0	1	2	1	13	
Elopement Rate		0.13	0.00	0.38	0.00	0.26	0.13	0.12	0.13	0.00	0.00	0.12	0.25	0.14		0.13
Med Variance (MV) Reports**		39	31	41	21	23	8	20	37	22	53	31	40	31	366	
MV Rate		5.15	4.03	5.20	2.59	3.01	1.02	2.38	4.92	2.71	6.80	3.79	5.04	3.87		
Adverse Drug Reactions Reports		7	5	6	2	1	8	9	4	13	10	8	6	7	79	
ADR Rate		0.92	0.65	0.76	0.25	0.13	1.02	1.07	0.53	1.60	1.28	0.98	0.76	0.83		
Total Med Administrations Scheduled		102303	102848	101049	95559	101422	102249	108474	98616	107326	104201	108187	104448		1236682	
Total Missing Documentations		572	348	427	570	684	780	860	759	469	381	568	493		6911	
Percent of Missing Documentation		0.56%	0.34%	0.42%	0.60%	0.67%	0.76%	0.79%	0.77%	0.44%	0.37%	0.53%	0.47%		0.56%	
Total STAT Orders		61	54	77	60	72	62	137	76	125	85	89	91	82		Figure 20
Total STAT Events****		35	29	41	32	38	32	67	43	58	44	51	40	43		
Total Individuals Involved >=1 STAT		19	20	25	22	20	17	24	24	16	29	25	21	22		
Total Patients with >=3 STAT Events		3	2	3	2	3	5	8	4	8	2	7	3	4		

* National Public Rate, NASMHPD Research Institute, National Research Institute (NRI), Data as of June 2013, Published in November 2013.

** Numbers may change if any additional UI report is made after the data run date from UI database (around the 15th of the following month); According to the revised UI policy as of November 4, 2013, a medication variance (MV) incident became no longer considered to be an unusual incident, and a medication or vital sign refusal incident is not longer an UI as of May 2014. UI data for the past 12 months in this report has been updated to reflect this change and reanalyzed in order to show the UI trend in consistent logic.

*** Injury is broadly defined to include any type of injuries regardless of the cause or severity level. The total number of patients injured represents all of the reported injuries including minor injuries treated with first aid alone. However, the patient injury rate considers only the number of patient injuries that required beyond first-aid level treatment based on the NRI definition and the patient injury rate is the number of 'major' patient injuries per every 1000 inpatient days

**** One STAT event may involve more than one STAT order for the same patient. Any orders placed within 20 minute timeframe are considered to belong to one STAT event.

Performance Related Information for Staff & Managers

4. Restraint & Seclusion

Data Source: Restraint/Seclusion Log and UI DB (for # of total events and patients) and Avatar (for patient days/hours)

Updated as of 07/14/14

Category	Jul-13	Aug-13	Sep-13	Oct-13	Nov-13	Dec-13	Jan-14	Feb-14	Mar-14	Apr-14	May-14	Jun-14	Monthly Average	Total (12mths)	NPR* (Jun-13)
Number of Restraint Events	0	0	0	2	2	0	1	0	0	2	6	4	1.4	17	
Number of Unique Patients Restrained	0	0	0	1	2	0	1	0	0	2	2	2	0.8		
Percentage of Patients Restrained	0.0%	0.0%	0.0%	0.3%	0.7%	0.0%	0.3%	0.0%	0.0%	0.6%	0.7%	0.7%	0.3%		5.8%
Total Restraint Hours (h:mm)	0:00	0:00	0:00	2:08	6:15	0:00	0:35	0:00	0:00	4:00	9:30	4:16	2:13	26:44	
Restraint Hours Rate	0.000	0.000	0.000	0.011	0.034	0.000	0.003	0.000	0.000	0.021	0.048	0.022	0.012		0.71
Number of Seclusion Events	4	5	4	4	11	6	6	13	15	10	20	22	10.0	120	
Number of Unique Patients Secluded	1	3	4	4	6	1	5	5	5	6	8	8	4.7		
Percentage of Patients Secluded	0.3%	1.1%	1.3%	1.3%	2.1%	0.3%	1.6%	1.7%	1.7%	1.9%	2.6%	2.7%	1.6%		2.4%
Total Seclusion Hours (h:mm)	3:50	8:30	3:10	3:20	17:11	6:20	10:34	12:15	18:27	11:47	24:49	22:32	11:53	142:45	
Seclusion Hours Rate	0.021	0.046	0.017	0.017	0.094	0.034	0.052	0.068	0.095	0.063	0.127	0.118	0.063		0.44

* National Public Rate, NASMHPD Research Institute, National Research Institute (NRI), Data as of June 2013, Published in November 2013.

Performance Related Information for Staff & Managers

5. Demographic Information of Individuals in Care

Data Source: Avatar

Updated as of 07/14/14

Category	Sub-group	Jul-13	Aug-13	Sep-13	Oct-13	Nov-13	Dec-13	Jan-14	Feb-14	Mar-14	Apr-14	May-14	Jun-14	Monthly Average	Percent*
Total Active (on Roll) at End of Month*		253	253	273	261	256	266	273	268	263	270	268	271	265	
Gender	Female	73	70	70	68	69	72	79	75	76	82	84	81	75	28.3%
	Male	180	183	203	193	187	194	194	193	187	188	184	190	190	71.7%
Age	Median Age (Years)	56 yrs	56 yrs	56 yrs	56 yrs	56 yrs	56 yrs	56 yrs	57 yrs	56 yrs	56 yrs	57 yrs	57 yrs	56 yrs	
	<30 years old	18	16	28	22	18	21	22	17	18	18	15	17	19	7.2%
	>=30 and <40 years old	27	24	26	25	26	30	30	28	30	30	29	34	28	10.7%
	>=40 and <50 years old	39	40	40	40	45	43	44	40	36	37	37	39	40	15.1%
	>=50 and <60 years old	74	79	84	82	75	78	77	82	78	82	80	78	79	29.9%
	>=60 years old	95	94	95	92	92	94	100	101	101	101	103	107	103	98
Legal Status of Individuals on Roll at End of Month	Emergency	19	18	27	18	19	26	34	33	35	31	36	33	27	10.4%
	Inpatient Commitment	23	20	22	24	23	23	26	28	28	30	31	33	26	9.8%
	Outpatient Commitment	19	24	21	25	23	22	22	22	32	19	18	22	22	8.5%
	Voluntary	50	46	42	42	41	41	41	47	43	38	41	36	42	16.0%
	Civil Sub-total	111	108	112	109	106	112	123	130	138	118	126	124	118	44.6%
	DC Exam	38	41	55	48	49	54	54	41	38	35	30	30	43	16.2%
	Mentally Incompetent	1	2	2	2	1	1	1	1	2	21	17	21	6	2.3%
	Forensic Pre-trial Sub-total	39	43	57	50	50	55	55	42	40	56	47	51	49	18.4%
	NGBRI - DC	89	88	89	86	83	82	77	78	77	79	79	80	82	31.1%
	NGBRI - US	9	9	10	11	12	12	13	13	13	12	12	12	12	4.3%
NGBRI - VI	1	1	1	1	1	1	1	1	1	1	1	1	1	0.4%	
Dual Commitment	2	2	2	2	2	2	2	2	2	2	1	1	2	0.7%	
Sexual Psychopath (Miller Act)	2	2	2	2	2	2	2	2	2	2	2	2	2	0.8%	
Forensic Post-trial Sub-total	103	102	104	102	100	99	95	96	95	96	95	96	99	37.3%	
Length of Stay	Median LOS (Days)	1190 d	1157 d	857 d	1003 d	938 d	646 d	568 d	628 d	627 d	570 d	557 d	522 d	772 d	
	Average LOS (Days)	3217 d	3207 d	2963 d	3108 d	3097 d	2956 d	2885 d	2950 d	2962 d	2800 d	2772 d	2756 d	2973 d	
	<30 Days	32	33	42	25	25	30	35	29	27	51	34	30	33	12.4%
	>=30 ~ <365 Days	62	65	78	83	80	85	89	87	85	67	85	92	80	30.2%
	>= 1 Year & < 2 Years	14	14	13	14	18	19	19	23	23	26	24	24	19	7.3%
	>= 2 Years & < 5 Years	44	39	39	37	33	34	32	31	32	32	33	32	35	13.2%
	>= 5 Years & < 20 Years	57	56	56	57	56	53	53	53	52	52	51	51	54	20.4%
>= 20 Years	44	46	45	45	44	45	45	45	44	42	41	42	44	16.6%	

* Counts the total number of individuals who are on the hospital roll at end of each month. This number serves as denominator to calculate percentage of each group.

Performance Related Information for Staff & Managers

6. Major Unusual Incidents by Incident Location/Unit

Data Source: UI DB

Updated as of 07/14/14

Category		Jul-13	Aug-13	Sep-13	Oct-13	Nov-13	Dec-13	Jan-14	Feb-14	Mar-14	Apr-14	May-14	Jun-14	Monthly Average	Total (12mths)	Percent
Total Unusual Incidents		138	110	145	172	178	177	210	168	192	214	191	173	172	2068	
Physical Assault		37	33	33	42	43	46	55	41	40	64	55	36	44	525	100%
Incident Location	1A	2	6	1	3	1	2	2	1	1	1	5	0	2	25	5%
	1B	0	1	0	2	1	0	0	4	0	1	3	1	1	13	2%
	1C	5	3	4	4	4	3	3	2	0	5	2	3	3	38	7%
	1D	6	4	6	5	4	3	4	7	13	4	8	8	6	72	14%
	1E	4	2	6	2	6	4	13	0	12	8	7	3	6	67	13%
	1F	3	4	6	3	3	8	7	5	1	7	4	2	4	53	10%
	1G	7	1	1	5	8	16	10	8	3	8	9	4	7	80	15%
	2A	0	0	0	0	0	0	0	0	0	0	0	0	0	0	0%
	2B	1	0	0	0	0	0	0	0	0	0	0	0	0	1	0%
	2C	1	3	0	3	3	3	4	5	2	7	5	7	4	43	8%
	2D	2	0	2	8	8	4	6	4	3	15	8	3	5	63	12%
	TLC - Intensive	3	6	4	5	2	2	4	5	3	5	3	2	4	44	8%
	TLC - Transitional	3	2	2	1	3	0	1	0	1	1	0	0	1	14	3%
	Other	0	1	1	1	0	1	1	0	1	2	1	3	1	12	2%
	Aggressive Behavior		30	35	34	45	45	48	67	48	65	62	57	61	50	597
Incident Location	1A	1	1	0	0	0	0	0	2	0	0	0	1	0	5	1%
	1B	0	0	0	0	0	0	0	1	4	0	0	0	0	5	1%
	1C	2	0	4	4	3	3	1	4	3	3	0	1	2	28	5%
	1D	0	0	1	2	2	0	8	3	9	2	10	5	4	42	8%
	1E	3	0	7	3	6	3	12	2	14	9	4	3	6	66	13%
	1F	8	13	4	8	15	11	18	19	15	13	9	10	12	143	27%
	1G	4	6	2	10	5	14	9	4	1	10	11	17	8	93	18%
	2A	0	1	2	1	2	2	0	4	1	3	2	2	2	20	4%
	2B	0	0	1	0	0	0	1	1	0	2	1	0	1	6	1%
	2C	3	2	3	3	3	5	2	4	6	3	8	10	4	52	10%
	2D	2	2	4	5	2	3	4	2	4	9	5	2	4	44	8%
	TLC - Intensive	3	5	3	6	3	5	7	1	6	5	6	7	5	57	11%
	TLC - Transitional	2	4	1	3	2	0	4	0	2	3	0	2	2	23	4%
	Other	2	1	2	0	2	2	1	1	0	0	1	1	1	13	2%

Performance Related Information for Staff & Managers

6. Major Unusual Incidents by Incident Location/Unit

Data Source: UI DB

Updated as of 07/14/14

Category		Jul-13	Aug-13	Sep-13	Oct-13	Nov-13	Dec-13	Jan-14	Feb-14	Mar-14	Apr-14	May-14	Jun-14	Monthly Average	Total (12mths)	Percent
Psych Emergency		9	9	19	23	30	31	52	34	53	34	48	48	33	390	74%
Incident Location	1A	0	0	0	0	0	0	0	1	0	0	0	1	0	2	0%
	1B	0	0	0	0	0	0	0	3	3	0	0	0	1	6	1%
	1C	0	0	3	1	4	1	0	1	1	0	0	2	1	13	2%
	1D	1	1	3	2	1	0	8	3	7	2	10	6	4	44	8%
	1E	2	0	5	2	9	2	15	1	23	8	5	3	6	75	14%
	1F	1	3	6	3	11	10	17	16	10	5	7	4	8	93	18%
	1G	4	2	1	8	5	16	10	5	3	9	16	17	8	96	18%
	2A	0	0	0	0	0	0	0	0	0	0	2	0	0	2	0%
	2B	0	0	0	1	0	0	0	0	0	0	0	0	0	1	0%
	2C	0	2	1	0	0	0	0	1	4	4	4	10	2	26	5%
	2D	0	0	0	4	0	2	1	2	1	3	2	0	1	15	3%
	TLC - Intensive	0	0	0	2	0	0	1	1	1	0	4	4	1	13	2%
	TLC - Transitional	0	1	0	0	0	0	0	0	0	0	1	0	0	2	0%
	Other	1	0	0	0	0	0	0	0	0	0	0	0	1	2	0%

Performance Related Information for Staff & Managers

6. Major Unusual Incidents by Incident Location/Unit

Data Source: UI DB

Updated as of 07/14/14

Category		Jul-13	Aug-13	Sep-13	Oct-13	Nov-13	Dec-13	Jan-14	Feb-14	Mar-14	Apr-14	May-14	Jun-14	Monthly Average	Total (12mths)	Percent	
Fall		16	11	27	19	17	16	18	25	26	24	22	20	20	241	100%	
Incident Location	1A	2	4	3	2	1	3	2	3	5	1	3	0	2	29	12%	
	1B	4	2	3	4	1	2	1	3	2	2	1	1	2	26	11%	
	1C	4	0	3	2	1	1	4	2	2	2	4	2	2	27	11%	
	1D	0	1	3	2	3	1	1	2	4	1	5	0	2	23	10%	
	1E	1	0	4	1	2	1	3	1	1	1	2	0	2	18	7%	
	1F	0	1	1	0	0	1	3	1	1	1	1	0	1	10	4%	
	1G	0	0	0	0	1	2	0	1	1	1	1	2	0	1	8	3%
	2A	0	0	1	2	0	0	0	0	1	0	0	0	0	0	4	2%
	2B	0	0	2	1	2	3	0	1	2	4	0	0	0	1	15	6%
	2C	2	0	1	0	0	0	0	0	1	4	1	2	1	1	12	5%
	2D	0	1	2	1	2	0	1	2	2	2	7	1	4	2	23	10%
	TLC - Intensive	0	0	2	2	2	2	0	0	0	0	1	0	1	1	10	4%
	TLC - Transitional	0	0	1	1	1	0	0	0	1	0	1	1	2	1	8	3%
	Other	3	2	1	1	1	0	3	6	2	0	0	3	6	2	28	12%
Physical Injury		24	16	33	23	41	37	47	30	34	43	34	24	32	386	100%	
Incident Location	1A	4	4	2	1	2	1	0	1	4	3	3	2	2	27	7%	
	1B	1	1	3	0	2	0	1	2	2	2	1	3	1	1	17	4%
	1C	3	0	3	1	2	3	3	2	1	0	0	2	2	2	22	6%
	1D	5	3	7	4	5	4	11	6	5	1	6	6	2	5	59	15%
	1E	0	1	4	2	6	2	7	1	8	6	6	3	3	4	43	11%
	1F	2	3	4	1	2	10	10	5	1	3	3	1	1	4	43	11%
	1G	2	1	1	5	4	11	3	5	2	5	9	9	2	4	50	13%
	2A	0	0	1	1	1	0	0	0	0	0	0	0	0	0	3	1%
	2B	0	0	1	1	1	1	0	1	2	1	1	1	0	1	9	2%
	2C	2	1	1	1	3	1	4	1	5	7	7	2	2	3	30	8%
	2D	1	0	2	2	4	3	3	3	3	2	8	1	1	3	30	8%
	TLC - Intensive	1	2	2	1	4	1	2	1	2	2	2	1	2	2	21	5%
	TLC - Transitional	2	0	1	1	2	0	0	0	0	0	0	0	2	1	8	2%
	Other	1	0	1	2	3	0	3	2	0	0	6	2	4	2	24	6%

* Not every incident is a major incident. This counts only those incidents that were classified to be major based on the policy.