



Government of the District of Columbia
Department of Behavioral Health (DBH)



PRISM
Performance Related Information for Staff and Managers

July 2016

Office of Statistics and Reporting (OSR), 08/15/16

Table of Contents

- 1. Admissions to SEH 1
- 2. Discharges from SEH 1
- 3. Average Daily Census..... 2
- 4. Transfers..... 2
- 5. 30-Day Readmission Rate 2
- 6. Unusual Incidents 3
- 7. Patient-Involved Unusual Incidents 3
- 8. Admissions vs. Patient UI Rate 4
- 9. Unusual Incidents by Severity 4
- 10. Selected Types of Incidents 4
- 11. Physical Assaults by Severity 5
- 12. Patient Injuries 5
- 13. Staff Injuries 5
- 14. Patient and Staff Falls 6
- 15. Percent of Patients Restrained or Secluded 6
- 16. Restraint Hours Rate & Seclusion Hours Rate 6
- 17. Elopements..... 7
- 18. Reported Medication Variance Events..... 7
- 19. Reported Adverse Drug Reactions 8
- 20. Percent of Missing Documentation on Med-Administration..... 8
- 21. Medication Refusal Rate* 8
- 22. Number of STAT Events and Individuals Involved 9
- 23. Percentage of SiteFM Work Orders Completed within 3 Days 9
- 24. Demographics..... 10
- 25. Length of Stay..... 11

Appendix Tables

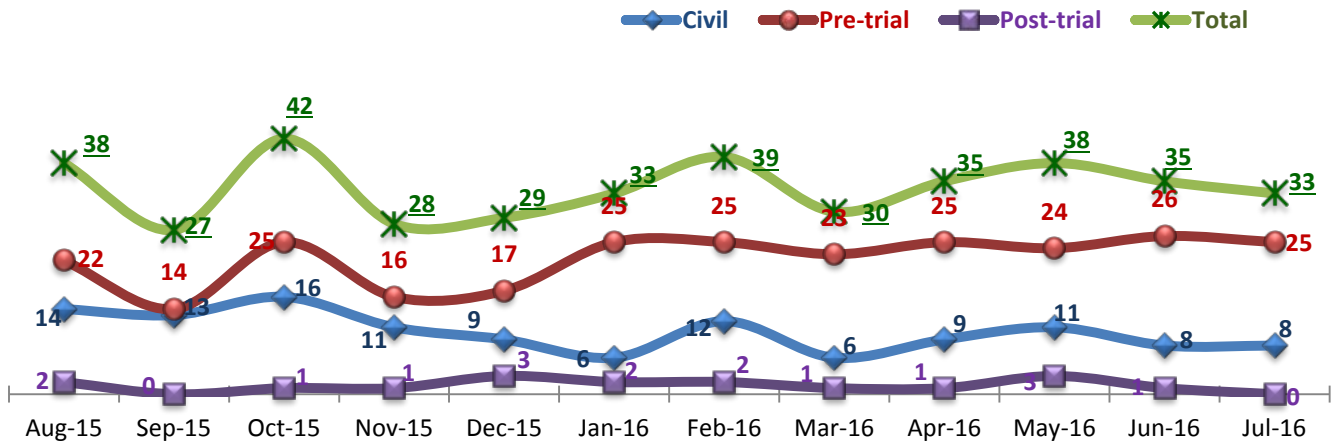
Data Disclaimer

The primary source of data extracted and analyzed herein is Avatar, the Saint Elizabeths Hospital’s electronic medical record system. Additional data source includes, but is not limited to, the Hospital’s Unusual Incident Database and SiteFM. Data reflects information as entered in each system by users. The Office of Statistics and Reporting (OSR) has made reasonable efforts to ensure that data and its accompanying information are as accurate and up-to-date as possible at the time of analysis and publication but does not guarantee the accuracy, reliability, or completeness of data. The OSR is not liable for any misinterpretation or misuse of the data. Use of any information from PRISM must be fully acknowledged and/or cited. Use of PRISM data for anything other than patient care determinations or management of the services provided within the hospital (including external publications, research papers, presentations, etc.) is prohibited without written permission from the Chief Quality and Data Manager Officer at the Saint Elizabeths Hospital.

Key Trends: Admissions, Discharges, Transfers, Census, and Readmissions (1~5)

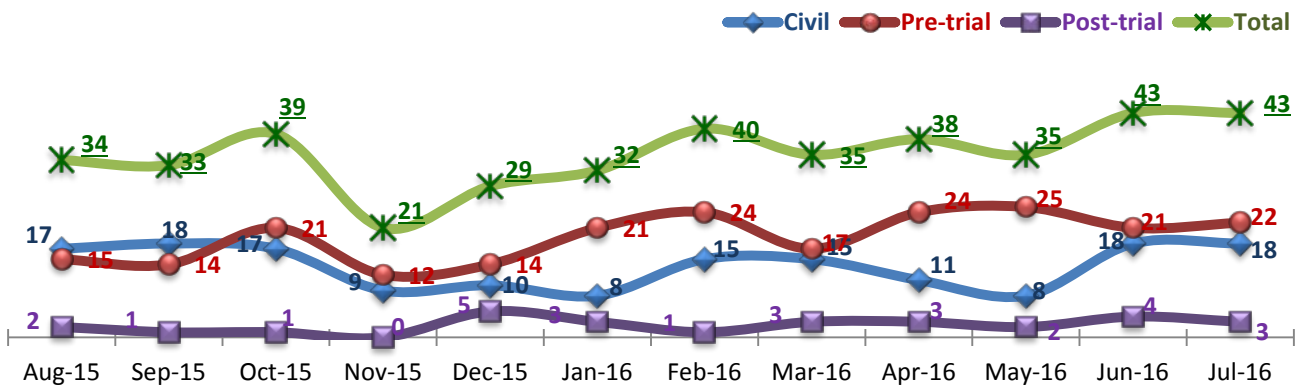
- Admissions for the previous 12 months are 36% less than admissions for the previous 12 month period at this time last year. The hospital has admitted 407 patients since August 2015.
- The average daily census (ADC) decreased by 10, as it fell to 263 this month. This represents the largest month-to-month reduction in over 2 years. Subsequently, the 259 patients on roll reached on the last day of July is the lowest total the hospital has experienced since December 2013.
- There were 15 Inter unit Transfers in July, the most since Oct. 2015 eighteen emergency medical leaves (EML) matched their high for the year. Not since February have there been over 12.
- No patient with a Pre-trial legal status have been readmitted within 30 days of discharge since January.

1. Admissions to SEH



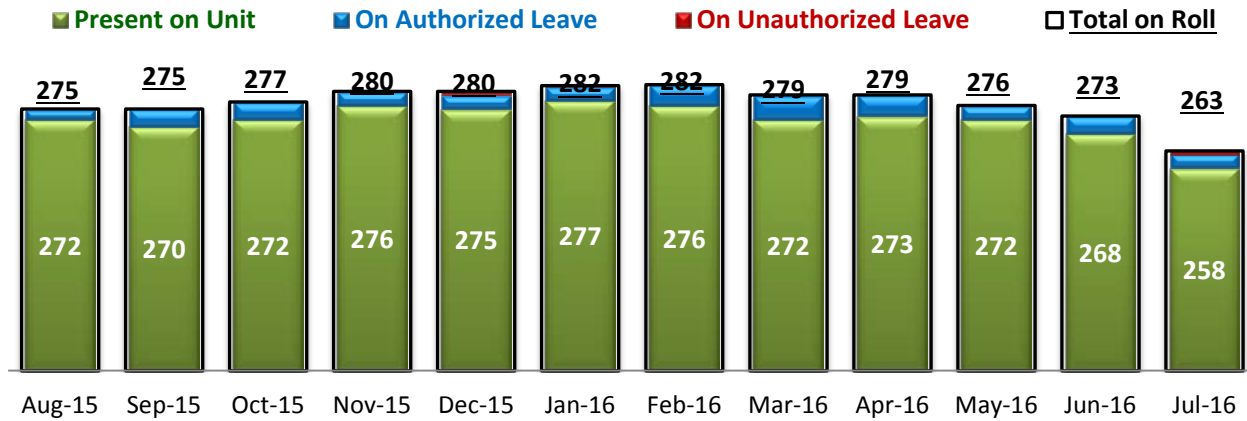
* Number of admissions to SEH inpatient program, including transfers from forensic outpatient to inpatient program.

2. Discharges from SEH



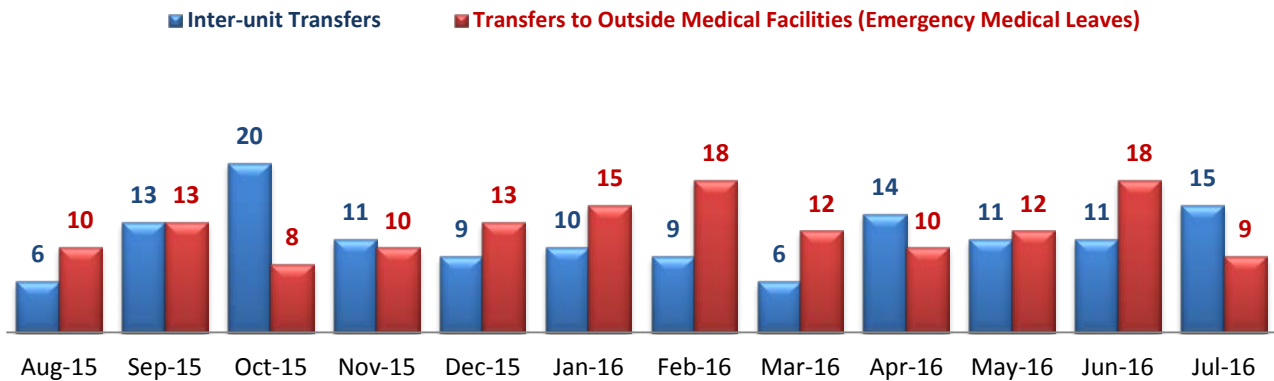
* Number of discharges from SEH inpatient program, including transfers from inpatient to forensic outpatient program.

3. Average Daily Census



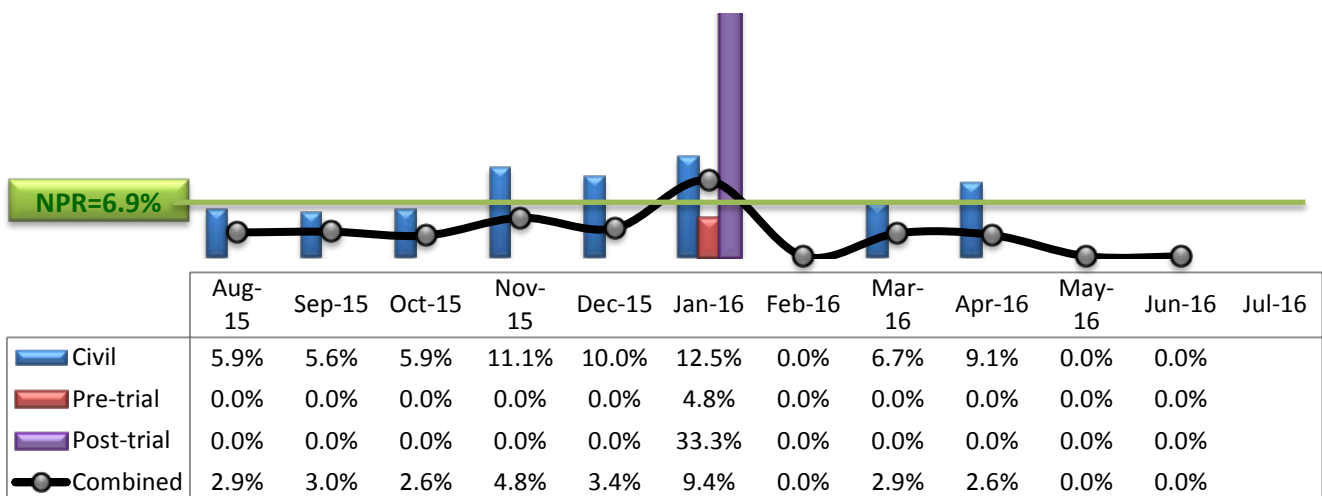
* Data above is the daily average number of individuals counted at 11:59 PM every day during each month.

4. Transfers



* Number of inter-unit transfers that occurred during month and number of emergency medical leaves that were initiated during month.

5. 30-Day Readmission Rate



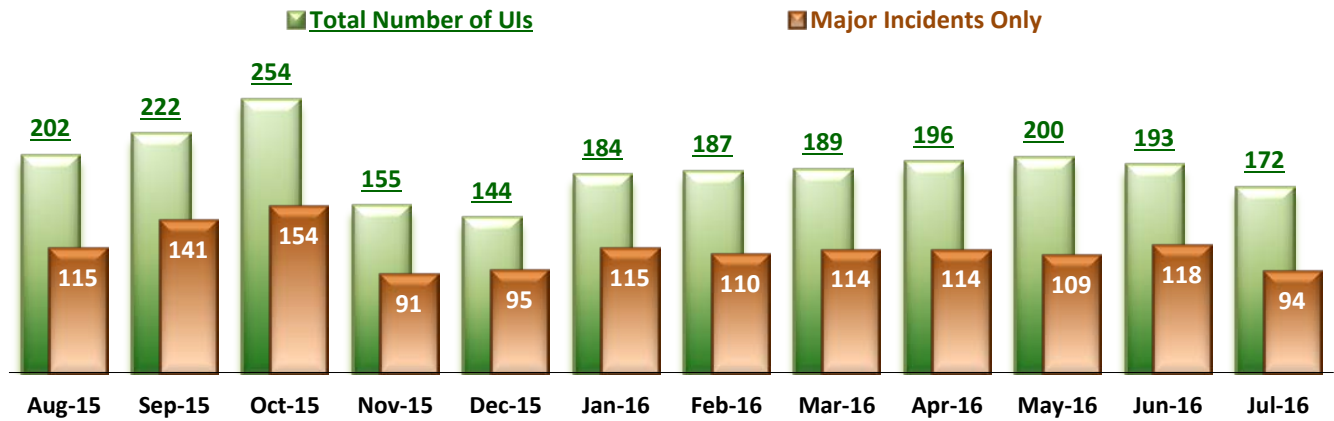
* Percent of discharges that returned to SEH within 30 days of discharges. It does not include those who may have been re-hospitalized at another psychiatric facility. This measure requires 30-day observation following discharge.

** The post-trial denominators (discharges) per month range only between one and six, making the monthly re-admission rate high when there is any. For example, in December 2014, there was only one post-trial discharge, which was readmitted within 30 days. Thus, the 30-day readmission rate for post-trial discharge for this month is 100%.

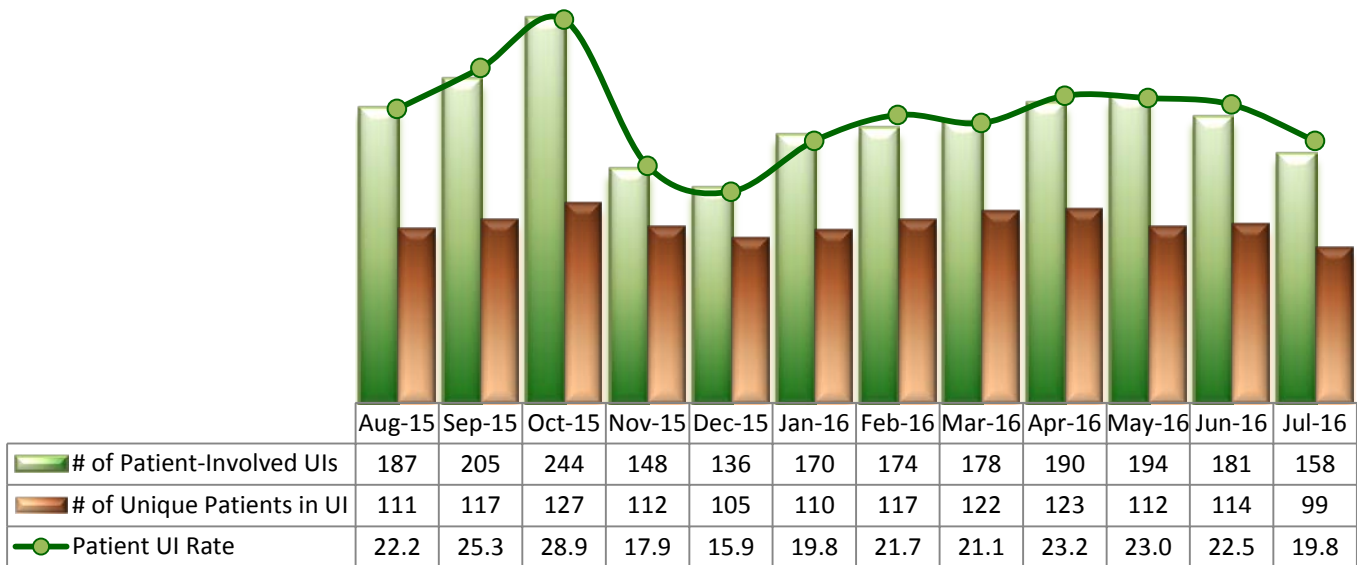
Key Trends: Unusual Incidents (6~17)

- Total Unusual Incidents (UI) dropped by more than 10% in July16 and major UIs decreased by more than 20% and they fell to the lowest levels this year.
- The most frequently occurring UIs were Physical Assaults (53); Aggressive Behavior (52); Emergency Involuntary Medications (40); Physical Injury (30); Falls (24). Of the 53 Physical Assaults, 30 of them included Physical Injury as well.
- The patient UI rate fell to its lowest level (19.8) since January, seemingly due to the reduction in census.
- There were 23 Psychiatric Emergencies in July.
- Eight UIs were considered to be high severity.
- The patient injury rate (0.13%) continues to fall well below the NPR (0.38%) and has been below that rate for the last several months.

6. Unusual Incidents

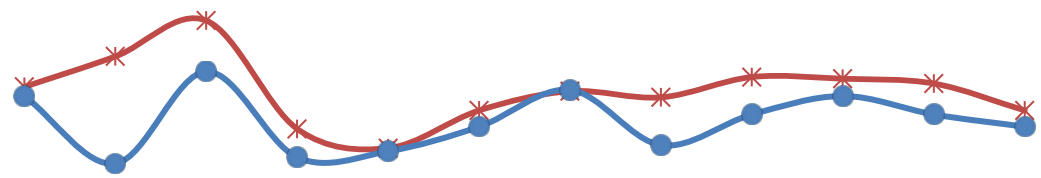


7. Patient-Involved Unusual Incidents



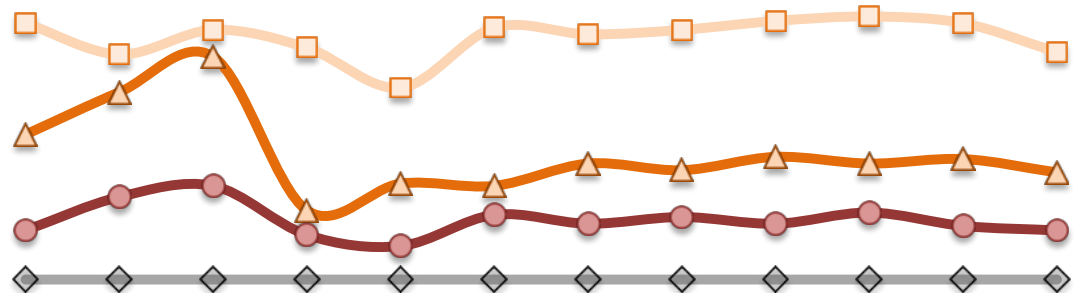
* The patient UI rate is the number of patient-involved unusual incidents reported for every 1000 inpatient days.

8. Admissions vs. Patient UI Rate



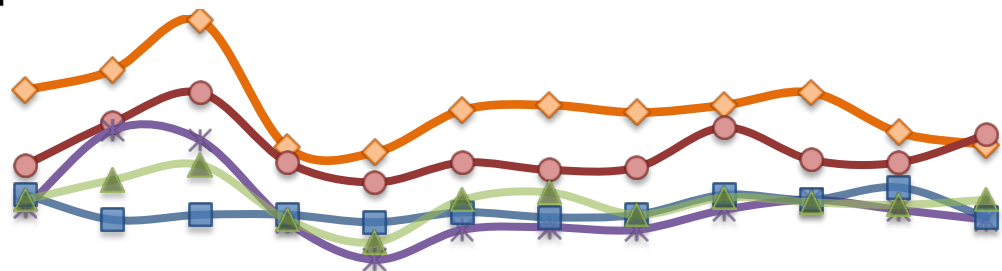
	Aug-15	Sep-15	Oct-15	Nov-15	Dec-15	Jan-16	Feb-16	Mar-16	Apr-16	May-16	Jun-16	Jul-16
—*— Patient UI Rate	22.2	25.3	28.9	17.9	15.9	19.8	21.7	21.1	23.2	23.0	22.5	19.8
—●— Admission	38	27	42	28	29	33	39	30	35	38	35	33

9. Unusual Incidents by Severity



	Aug-15	Sep-15	Oct-15	Nov-15	Dec-15	Jan-16	Feb-16	Mar-16	Apr-16	May-16	Jun-16	Jul-16
□ 1) Low	115	101	112	104	86	113	110	112	116	118	115	102
△ 2) Medium	65	84	100	31	43	42	52	49	55	52	54	48
● 3) High	22	37	42	20	15	29	25	28	25	30	24	22
◇ 4) Catstrp	0	0	0	0	0	0	0	0	0	0	0	0
Total UI	202	222	254	155	144	184	187	189	196	200	193	172

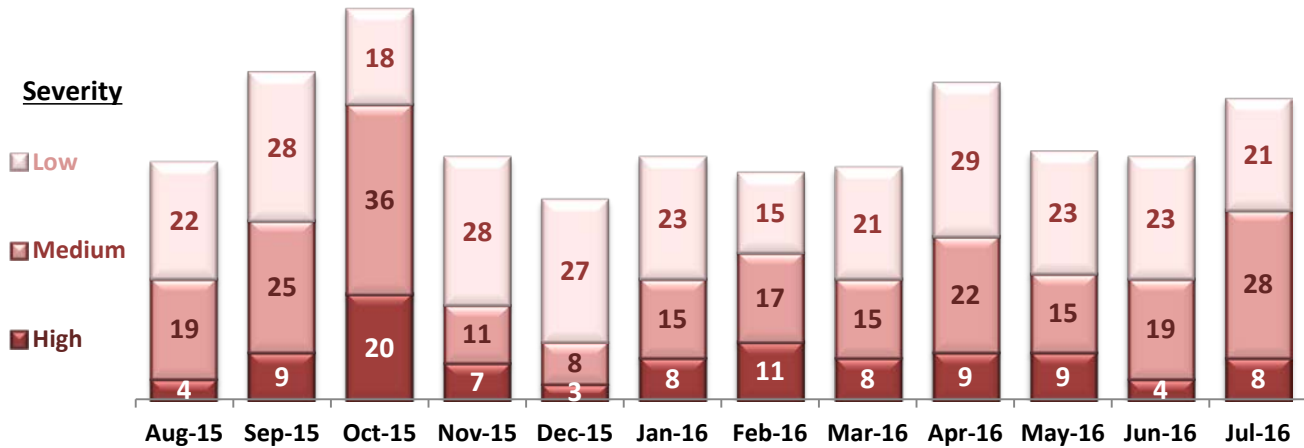
10. Selected Types of Incidents



	Aug-15	Sep-15	Oct-15	Nov-15	Dec-15	Jan-16	Feb-16	Mar-16	Apr-16	May-16	Jun-16	Jul-16
◆ Aggressive Behavior	75	83	103	52	50	67	69	66	69	74	58	53
● Physical Assault	45	62	74	46	38	46	43	44	60	47	46	57
* Pysch Emerg.	28	59	55	22	7	19	20	19	27	31	27	23
■ Fall	33	23	25	25	22	26	24	25	33	31	36	24
▲ Injury	31	39	45	23	14	31	34	25	32	30	29	31

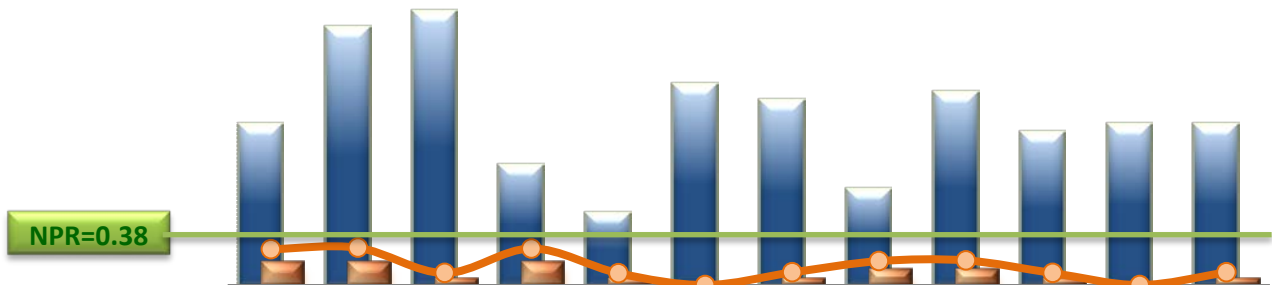
* These are incident types that are frequently reported. Some incidents may be counted in multiple categories. For example, a physical assault incident that accompanied psychiatric emergency and injury is counted under psychiatric emergency and injury as well as under physical assault. Injury is broadly defined to include any type of injuries regardless of the cause or severity level.

11. Physical Assaults by Severity



* Any physical assault that accompanies a code 13 or results in extensive injury needing off-unit treatment or transfer to ER is considered to be high severity; any physical assault that causes a minor injury that can be treated on unit is considered to be medium severity; and physical assault events that result in no injury are considered to be low severity.

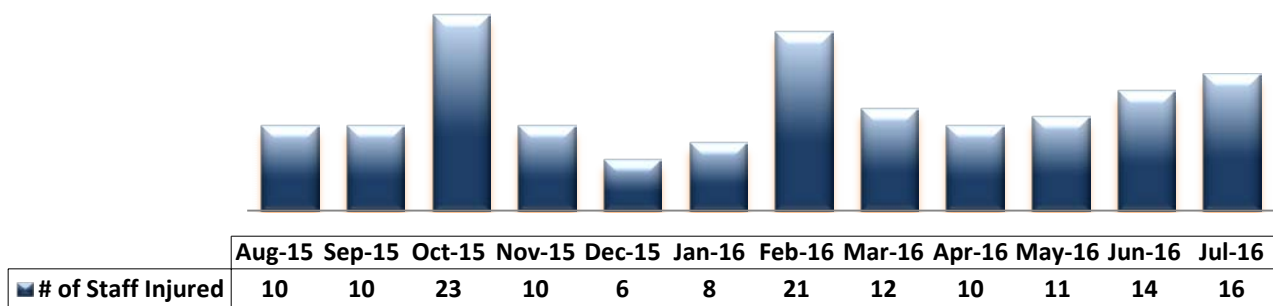
12. Patient Injuries



	Aug-15	Sep-15	Oct-15	Nov-15	Dec-15	Jan-16	Feb-16	Mar-16	Apr-16	May-16	Jun-16	Jul-16
Total Pts Injured	20	32	34	15	9	25	23	12	24	19	20	20
Major Pt Injuries*	3	3	1	3	1	0	1	2	2	1	0	1
Patient Injury Rate	0.36	0.37	0.12	0.36	0.12	0.00	0.12	0.24	0.24	0.12	0.00	0.13

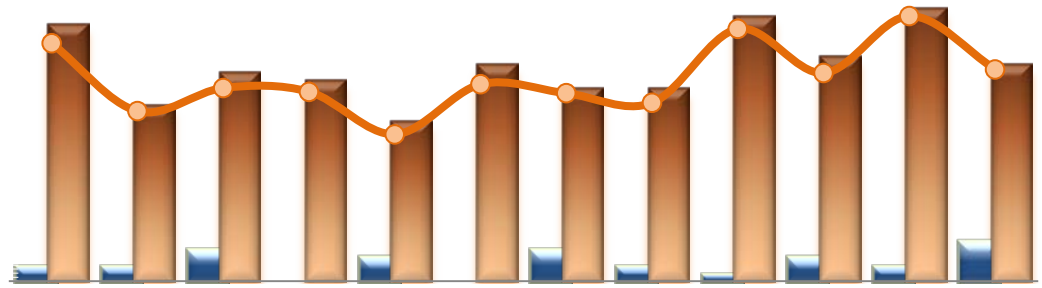
* Injury is broadly defined to include any type of injuries regardless of the cause or severity level. The total number of patients injured represents all of the reported injuries including minor injuries treated with first aid alone. However, the patient injury rate considers only the number of patient injuries that are required beyond first-aid level treatment based on the NRI definition and the patient injury rate is the number of 'major' patient injuries per every 1000 inpatient days

13. Staff Injuries



* Injury is broadly defined to include any type of injuries regardless of the cause or severity level. The total number of staff injured represents all of the reported staff injuries including minor injuries treated with first aid alone.

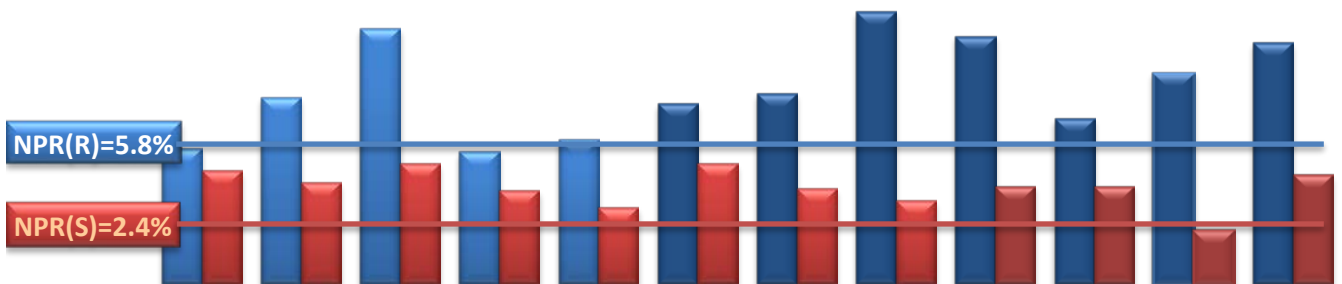
14. Patient and Staff Falls



	Aug-15	Sep-15	Oct-15	Nov-15	Dec-15	Jan-16	Feb-16	Mar-16	Apr-16	May-16	Jun-16	Jul-16
Total Staff who Fell	2	2	4	0	3	0	4	2	1	3	2	5
Total Patients who Fell	32	22	26	25	20	27	24	24	33	28	34	27
Patient Fall Rate	3.79	2.71	3.08	3.02	2.34	3.14	3.00	2.84	4.02	3.32	4.23	3.38

* The patient fall rate is the number of patient falls per every 1000 inpatient days.

15. Percent of Patients Restrained or Secluded

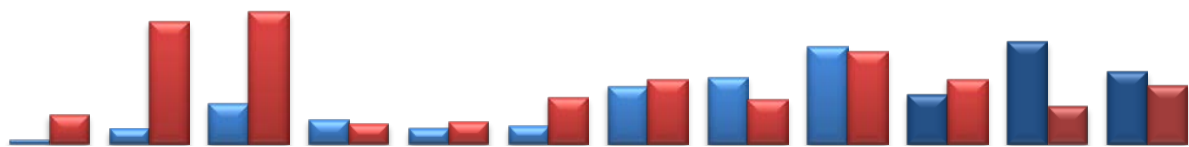


	Aug-15	Sep-15	Oct-15	Nov-15	Dec-15	Jan-16	Feb-16	Mar-16	Apr-16	May-16	Jun-16	Jul-16
Restraint	5.8%	7.9%	10.9%	5.6%	6.2%	7.7%	8.1%	11.6%	10.6%	7.1%	9.0%	10.3%
Seclusion	4.8%	4.3%	5.1%	4.0%	3.2%	5.1%	4.1%	3.5%	4.2%	4.2%	2.2%	4.7%

* Percent of unique patients who were restrained at least once and percent of unique patients who were secluded at least once. The denominator includes all individuals who were served in care 1+ day during month.

** Prior to April 2015, the Hospital tracked only mechanical restraint events, but the Hospital's restraint policy has changed to include any physical holds. The sudden increase of the restraint data as of April 2015 reflects this change.

16. Restraint Hours Rate & Seclusion Hours Rate

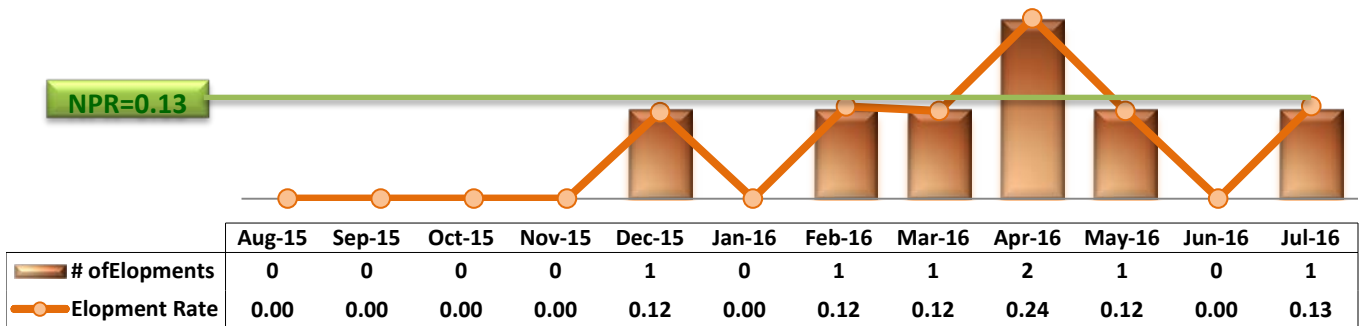


	Aug-15	Sep-15	Oct-15	Nov-15	Dec-15	Jan-16	Feb-16	Mar-16	Apr-16	May-16	Jun-16	Jul-16
Restraint	0.008	0.031	0.086	0.052	0.032	0.038	0.123	0.142	0.207	0.104	0.218	0.154
Seclusion	0.062	0.260	0.281	0.043	0.047	0.099	0.136	0.093	0.196	0.137	0.078	0.125

* Restraint/Seclusion Hours Rate: Number of hours spent in restraint/seclusion for every 1000 inpatient hours.

** The duration of each physical hold event is counted as 1 minute as a physical hold is ordered and used only as a temporary intervention that lasts less than a minute to break up any physical conflicts or to administer emergency medications.

17. Elopements

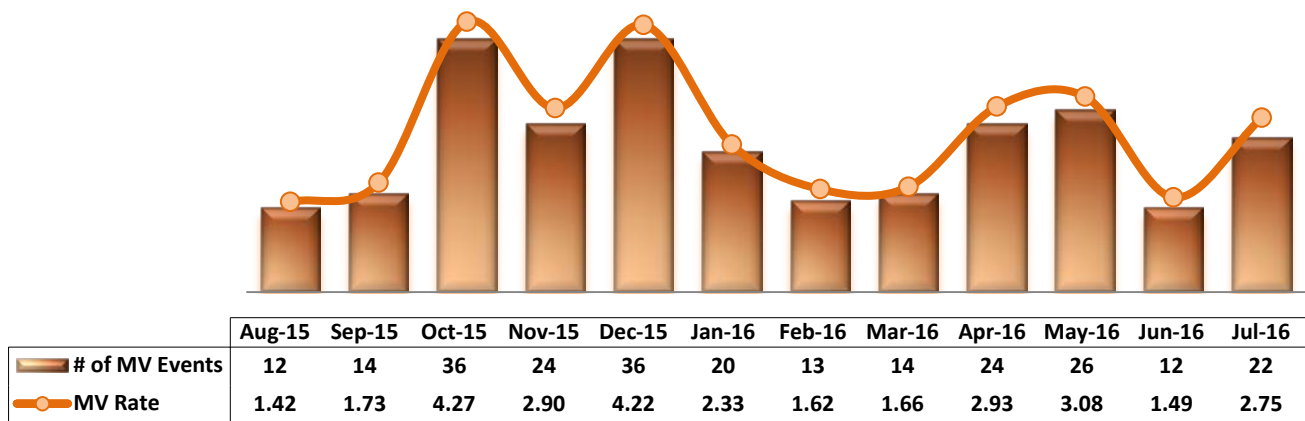


* Data herein counts the number of unauthorized leaves for any duration that were initiated during month and were recorded in Avatar. The elopement rate is the number of those unauthorized leaves that occurred for every 1000 inpatient days.

Key Trends: Medication Documentation, MV, ADR, and STAT (18~22)

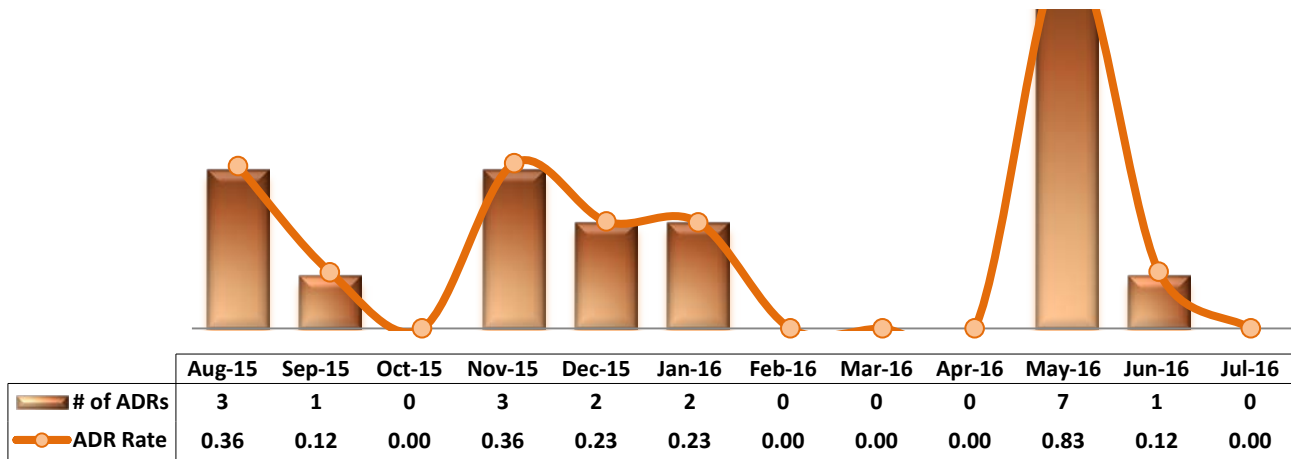
- There have been many sizeable changes in the number of reported Medical Variances (MV) on month-to-month basis over the last year. October through December followed a similar pattern as there were a reduction of 12 from October to November and a 12 count increase from November to December 2015.
- Missing Medical Administration documentation fell for the first time 4 months dropping from an all-time high of 0.93% back to 0.57%.
- Twenty-eight of 301 individuals (9%) served in July received at least 1 STAT order. The 165 STAT orders recorded in July were third highest in the last 12 months with the most (251) occurring in October 2015 followed by 182 a month prior in September.
- The highest number of STAT events for a single IIC in July was 14, which included 26 orders.

18. Reported Medication Variance Events



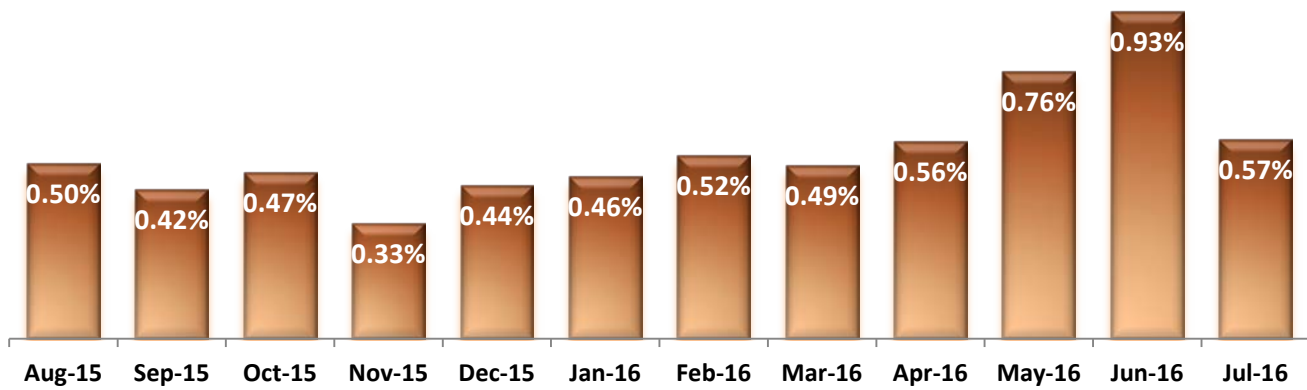
* MV Rate: Number of reported medication variance events that occurred for every 1000 inpatient days.

19. Reported Adverse Drug Reactions

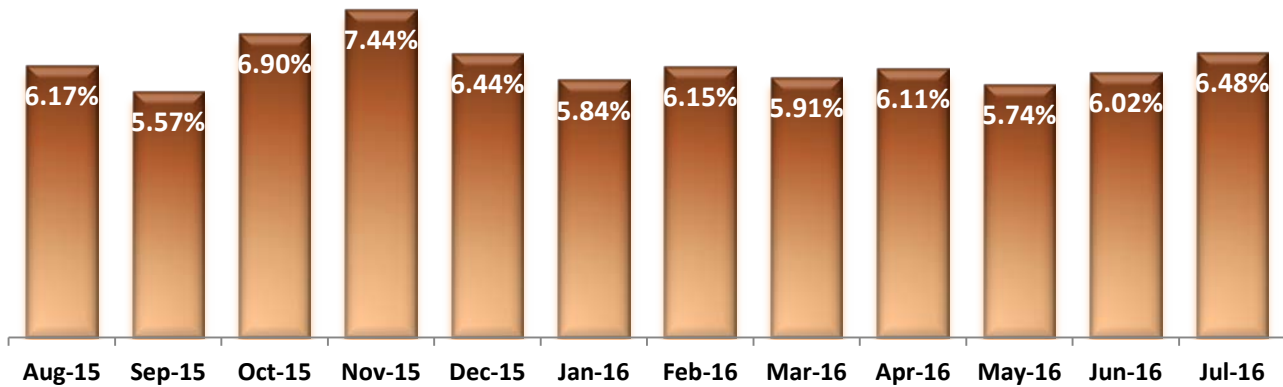


* ADR Rate: Number of reported adverse drug reaction events that occurred for every 1000 inpatient days.

20. Percent of Missing Documentation on Med-Administration

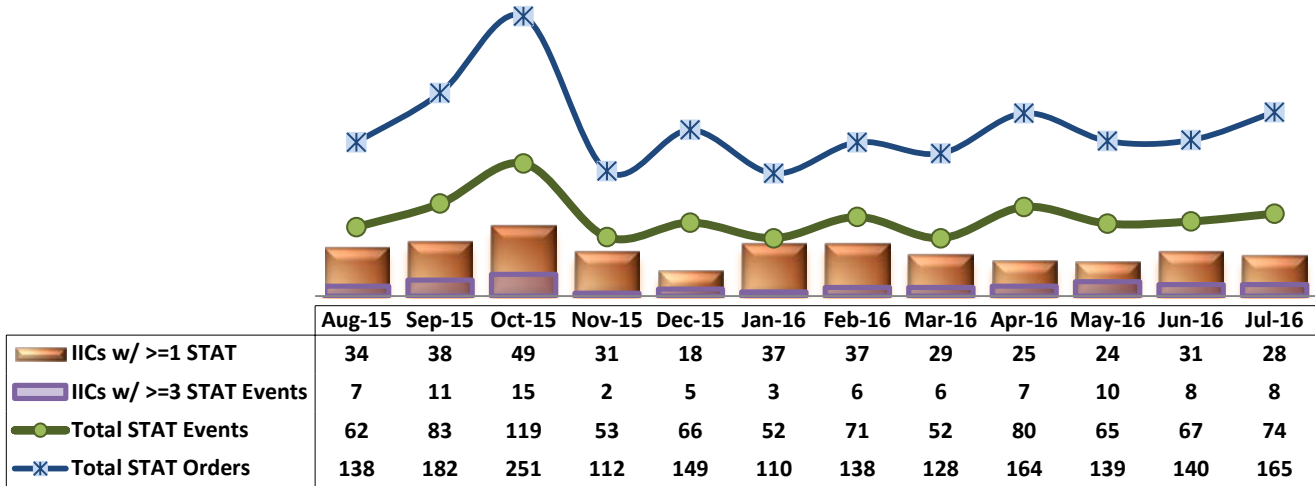


21. Medication Refusal Rate*



* Medication Refusal Rate: the number of refused medication doses divided by the total number of doses scheduled for administration.

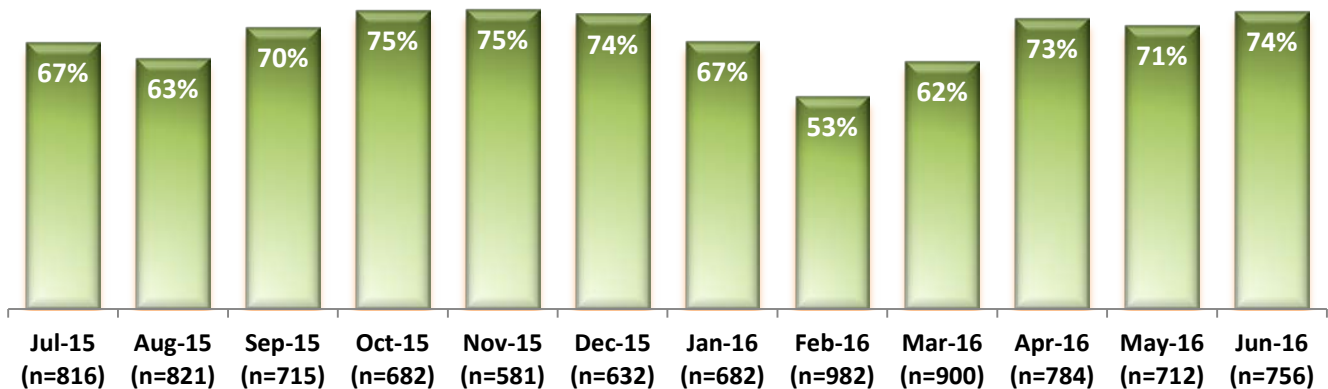
22. Number of STAT Events and Individuals Involved



Key Trends: Environment of Care (23)

- Due to technical issues with the database that stores the data for SiteFm work assignments, there is no data do report for the month of July.

23. Percentage of SiteFM Work Orders Completed within 3 Days

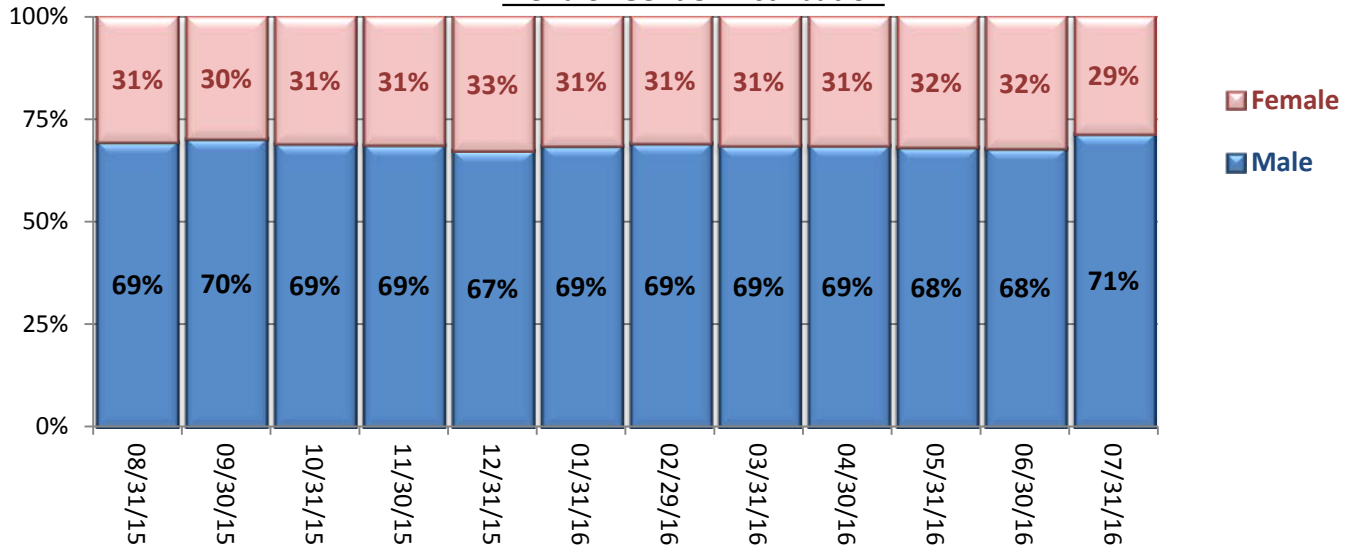


Key Trends: Demographics, Legal Status, and Length of Stay (24-25)

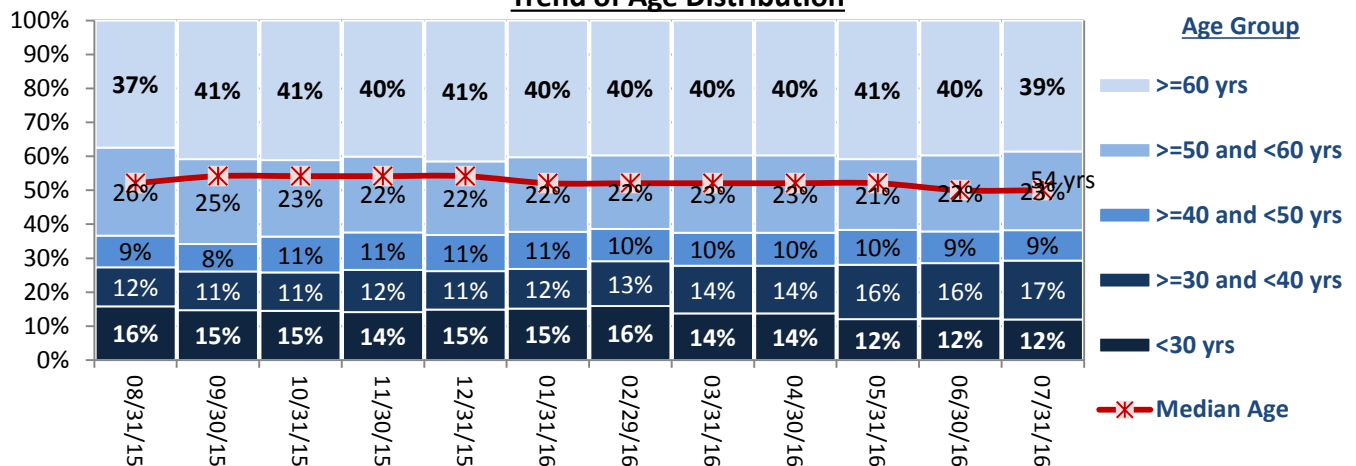
- The median age of individuals in care has been between 54 and 57 for the last 4 years. Prior to last month, the median had not been below 55 since December 2011. This month shows a median age of 54.
- The percentage of individuals in care under 30 years of age has been steadily decreasing, in general, since April of 2015. For the last 3 months, 12% of the individuals have been under 30 years of age.
- As the average Length of Stay (LOS) continues to decrease with those who are in care between 1~2 years, it continues to rise with those in case between 2~5 years which may indicate that those that are in care continue to stay in care for longer periods of time.
- The average LOS of individuals in a Civil legal status has increased by 90 days (3 months) in the last month and by almost 180 days (6 months) since February
- There has been a significant increase for the average and median LOS of the Post-trial individuals in care over the last 2 months. The average LOS has risen 476 days, or 16 months, and the median has risen 1536 days (51 months/4.25 years) for those individuals over that time frame.

24. Demographics

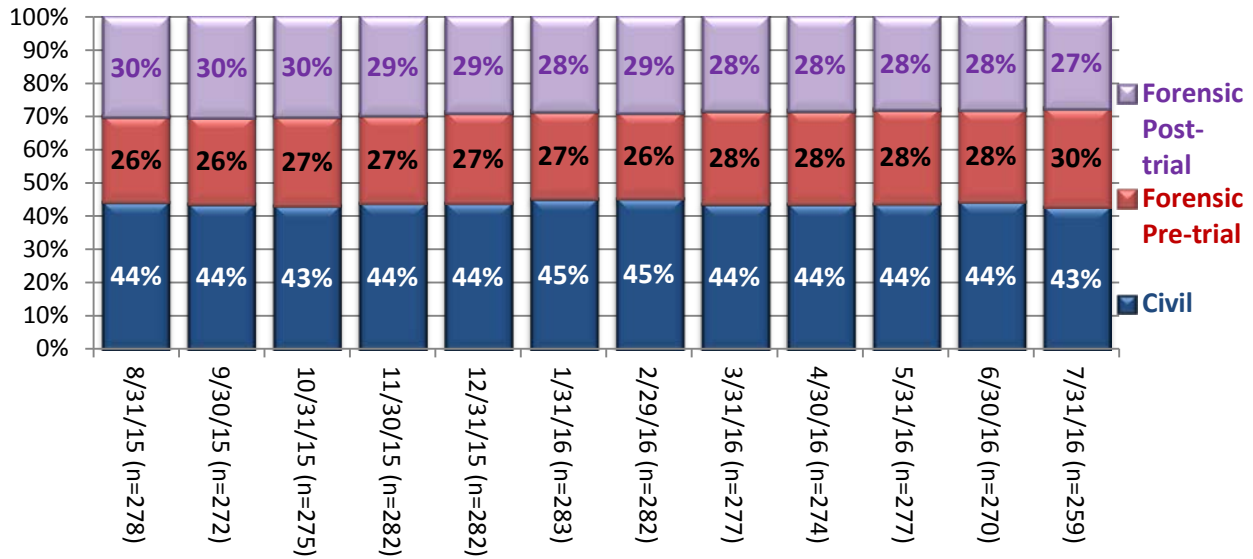
Trend of Gender Distribution



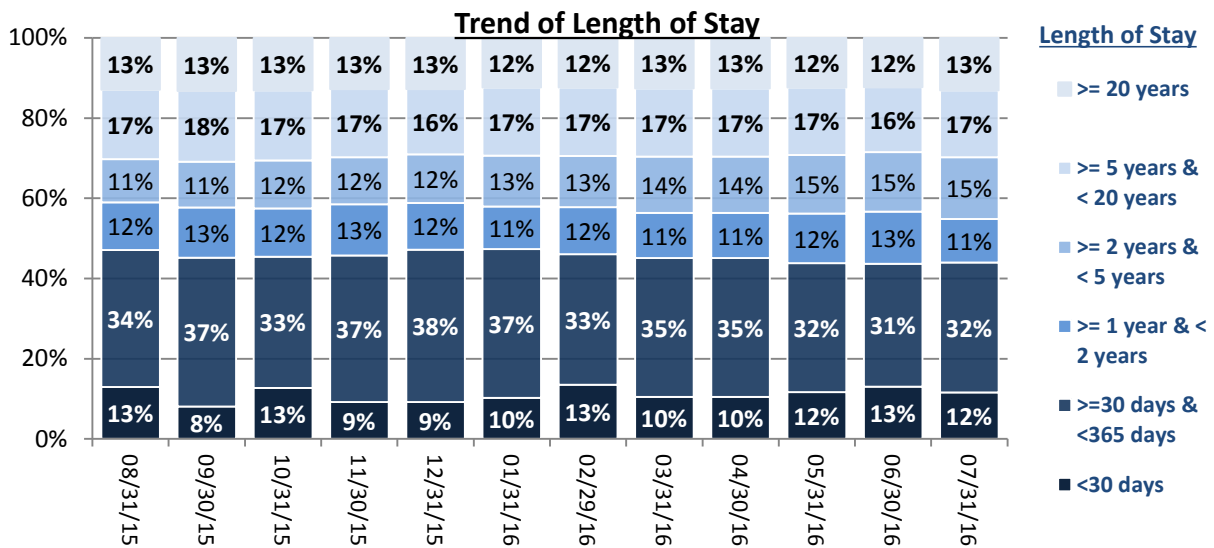
Trend of Age Distribution



Trend of Legal Status Distribution

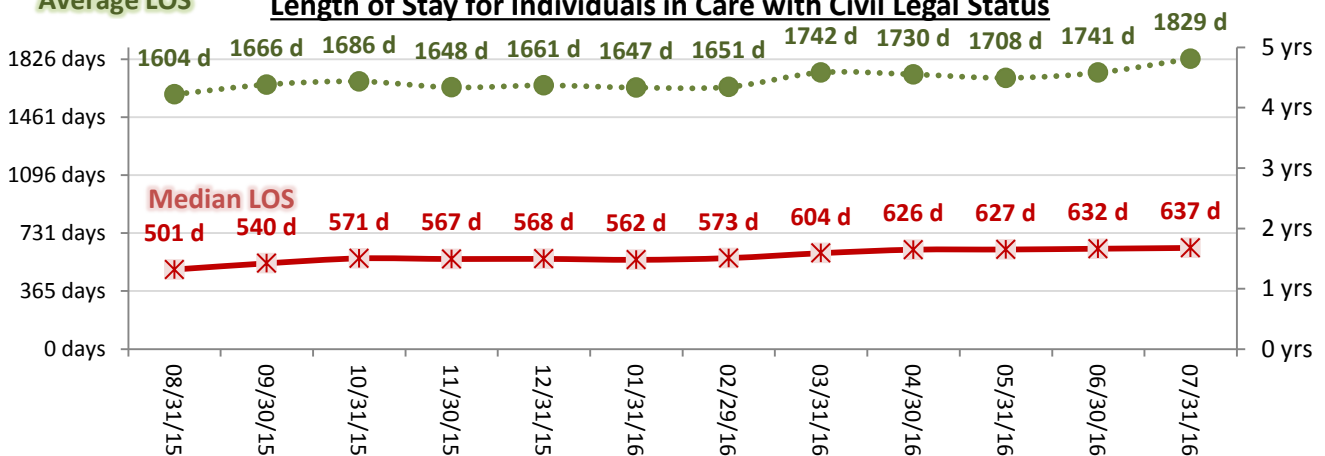


25. Length of Stay

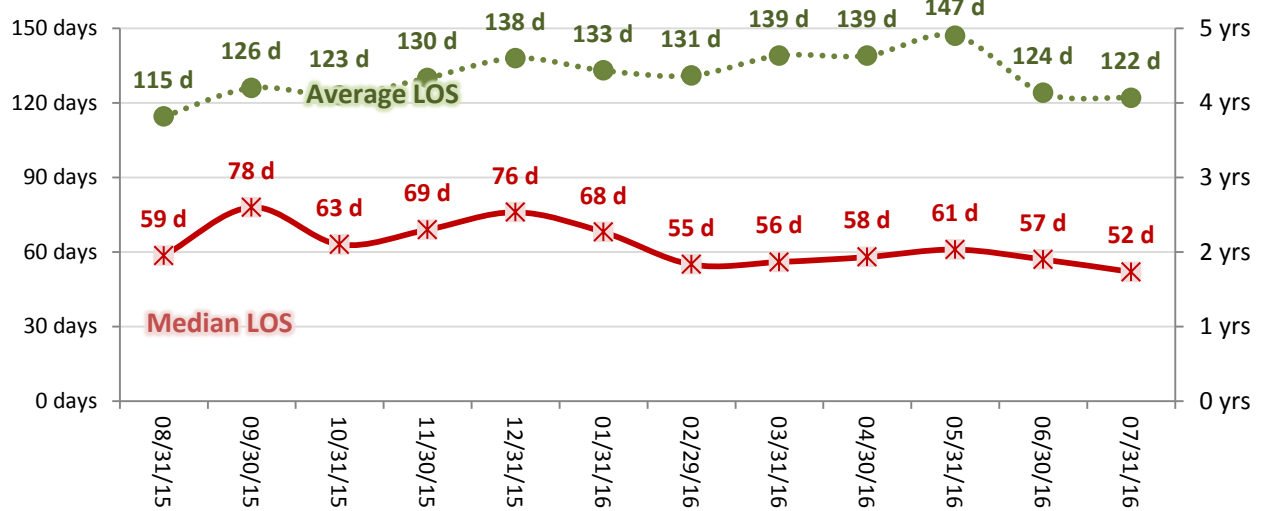


Average LOS

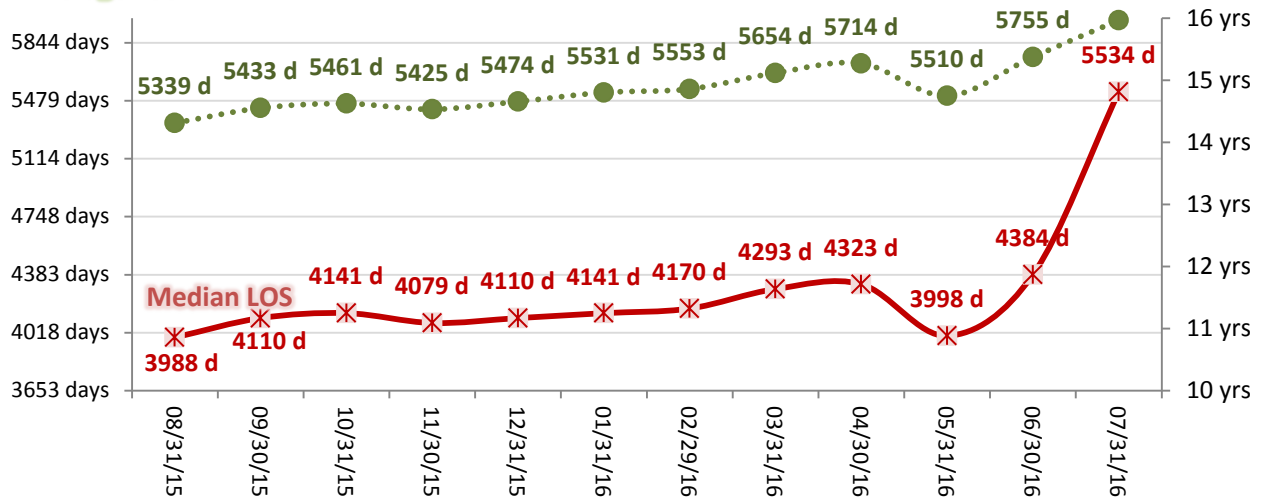
Length of Stay for Individuals in Care with Civil Legal Status



Length of Stay for Individuals in Care with Pre-trial Legal Status



Average LOS Length of Stay for Individuals in Care with Post-trial Legal Status



Performance Related Information for Staff & Managers

1. Census, Admissions, Discharges & Transfers

Data Source: Avatar

Updated as of 08/08/16

Category	Aug-15	Sep-15	Oct-15	Nov-15	Dec-15	Jan-16	Feb-16	Mar-16	Apr-16	May-16	Jun-16	Jul-16	Monthly Average	Total (12mths)	Figure	
Admissions	Civil	14	13	16	11	9	6	12	6	9	11	8	8	10	123	Figure 1
	Pre-trial	22	14	25	16	17	25	25	23	25	24	26	25	22	267	
	Post-trial	2	0	1	1	3	2	2	1	1	3	1	0	1	17	
	Total	38	27	42	28	29	33	39	30	35	38	35	33	34	407	
Discharges	Civil	17	18	17	9	10	8	15	15	11	8	18	18	14	164	Figure 2
	Pre-trial	15	14	21	12	14	21	24	17	24	25	21	22	19	230	
	Post-trial	2	1	1	0	5	3	1	3	3	2	4	3	2	28	
	Total	34	33	39	21	29	32	40	35	38	35	43	43	35	422	
Net Increase During Month	Civil	-3	-5	-1	2	-1	-2	-3	-9	-2	3	-10	-10		-41	
	Pre-trial	7	0	4	4	3	4	1	6	1	-1	5	3		37	
	Post-trial	0	-1	0	1	-2	-1	1	-2	-2	1	-3	-3		-11	
	Total	4	-6	3	7	0	1	-1	-5	-3	3	-8	-10		-15	
All Individuals on Roll at End of Month	278	272	275	282	282	283	282	277	274	277	270	259	276			
a. Present on Unit	275	267	268	278	277	282	273	271	267	274	265	258	271			
b. On AL	3	5	7	4	4	1	9	6	6	3	5	0	4			
c. On UL	0	0	0	0	1	0	0	0	1	0	0	1	0			
All Individuals on Roll: Daily Average during Month*	275	275	277	280	280	282	282	279	279	276	273	263	277			
a. Present on Unit	272	270	272	276	275	277	276	272	273	272	268	258	272		Figure 3	
b. On AL	3	5	5	4	4	4	6	7	6	4	5	4	3.8			
c. On UL	0	0	0	0	1	0	0	0	0	0	0	1	0.19			
Patient Days**	8435	8114	8439	8277	8537	8599	8009	8436	8200	8437	8043	7994	8293	99520		
Inter-Unit Transfers during Month	6	13	20	11	9	10	9	6	14	11	11	15	11	135	Figure 4	
Medical Leaves Initiated during Month	Emergency	10	13	8	10	13	15	18	12	10	12	18	9	12		148
Non-Emer	89	69	86	72	72	54	68	66	66	46	72	42	67	802		
Total	99	82	94	82	85	69	86	78	76	58	90	51	79	950		
Non-Medical Leaves Initiated during Month	322	290	356	341	390	298	364	389	316	284	287	214	321	3851		
UL Initiated during Month	0	0	0	0	1	0	1	1	2	1	0	2	1	8		
Total Unique Patients Served during Month	311	302	312	302	308	312	320	310	312	312	312	301	310			
30 Day Readmission ***	Civil	1	1	1	1	1	1	0	1	1	0	0		1	8	
	Pre-trial	0	0	0	0	0	1	0	0	0	0	0		0	1	
	Post-trial	0	0	0	0	0	1	0	0	0	0	0		0	1	
	Total	1	1	1	1	1	3	0	1	1	0	0		1	10	

* This is the average number of individuals served on a given day for the respective month. Due to rounding from average calculation, numbers from its subcategories a, b, & c may not add up to the total number on this row.

** It counts the number of patients who are present on the unit and excludes those on authorized or unauthorized leave at 11:59pm on a given day.

*** Number of patients returning within 30 days of discharges that occurred during month.

Performance Related Information for Staff & Managers

2. Key Performance Indicators

Data Source: UI DB, MV DB, ADR DB, Restraint/Seclusion Log, and Avatar

Updated as of 08/08/16

Category	Aug-15	Sep-15	Oct-15	Nov-15	Dec-15	Jan-16	Feb-16	Mar-16	Apr-16	May-16	Jun-16	Jul-16	Monthly Average	NPR* (Jun-13)	Figure
30 Day Readmit (Discharge Cohort)**	Civil	5.9%	5.6%	5.9%	11.1%	10.0%	12.5%	0.0%	6.7%	9.1%	0.0%		5.3%		Figure 5
	Pre-trial	0.0%	0.0%	0.0%	0.0%	0.0%	4.8%	0.0%	0.0%	0.0%	0.0%		0.5%		
	Post-trial	0.0%	0.0%	0.0%	N/A	0.0%	33.3%	0.0%	0.0%	0.0%	0.0%		3.9%		
	Combined	2.9%	3.0%	2.6%	4.8%	3.4%	9.4%	0.0%	2.9%	2.6%	0.0%		2.6%	6.9%	
Number of Unusual Incidents*	202	222	254	155	144	184	187	189	196	200	193	172	192		Figure 6
Patient Unusual Incident Rate	22.2	25.3	28.9	17.9	15.9	19.8	21.7	21.1	23.2	23.0	22.5	19.8	21.8		Figure 7
UI by Severity	Catastrophe	0	0	0	0	0	0	0	0	0	0	0	0		Figure 9
	High	22	37	42	20	15	29	25	28	25	30	24	27		
	Medium	65	84	100	31	43	42	52	49	55	52	54	48	56	
	Low	115	101	112	104	86	113	110	112	116	118	115	102	109	
Physical Assault Incident Rate	5.3	7.6	8.8	5.6	4.5	5.3	5.4	5.2	7.3	5.6	5.7	7.1	6.1		
Selected Types of Incidents	Physical Assault	45	62	74	46	38	46	43	44	60	47	46	57	51	Figure 10
	Aggressive Behav.	75	83	103	52	50	67	69	66	69	74	58	53	68	
	Psych Emergency	28	59	55	22	7	19	20	19	27	31	27	23	28	
	Fall	33	23	25	25	22	26	24	25	33	31	36	24	27	
	Injury	31	39	45	23	14	31	34	25	32	30	29	31	30	
Physical Assaults by Severity	High	4	9	20	7	3	8	11	8	9	9	4	8	13	Figure 11
	Medium	19	25	36	11	8	15	17	15	22	15	19	28	19	
	Low	22	28	18	28	27	23	15	21	29	23	23	21	23	
Patient Injury Rate***	0.36	0.37	0.12	0.36	0.12	0.00	0.12	0.24	0.24	0.12	0.00	0.13	0.18	0.38	
Patients with Major Injuries***	3	3	1	3	1	0	1	2	2	1	0	1	2		Figure 12
Total Patients Injured***	20	32	34	15	9	25	23	12	24	19	20	20	21		
Total Staff Injured***	10	10	23	10	6	8	21	12	10	11	14	16	13		Figure 13
Patient Fall Rate	3.79	2.71	3.08	3.02	2.34	3.14	3.00	2.84	4.02	3.32	4.23	3.38	3.24		Figure 14
Total Patients who Fell	32	22	26	25	20	27	24	24	33	28	34	27	27		
Total Staff who Fell	2	2	4	0	3	0	4	2	1	3	2	5	2		
Percent of Patients Restrained	5.8%	7.9%	10.9%	5.6%	6.2%	7.7%	8.1%	11.6%	10.6%	7.1%	9.0%	10.3%	1.7%	5.8%	Figure 15
Percent of Patients Secluded	4.8%	4.3%	5.1%	4.0%	3.2%	5.1%	4.1%	3.5%	4.2%	4.2%	2.2%	4.7%	4.1%	2.4%	
Restraint Hours Rate	0.008	0.031	0.086	0.052	0.032	0.038	0.123	0.142	0.207	0.104	0.218	0.154	0.099	0.71	Figure 16
Seclusion Hours Rate	0.062	0.260	0.281	0.043	0.047	0.099	0.136	0.093	0.196	0.137	0.078	0.125	0.129	0.44	
Elopement Rate	0.00	0.00	0.00	0.00	0.12	0.00	0.12	0.12	0.24	0.12	0.00	0.13	0.08	0.13	Figure 17
Medication Variance Rate	1.42	1.73	4.27	2.90	4.22	2.33	1.62	1.66	2.93	3.08	1.49	2.75	2.54		Figure 18
Adverse Drug Reaction Rate	0.36	0.12	0.00	0.36	0.23	0.23	0.00	0.00	0.00	0.83	0.12	0.00	0.19		Figure 19
Missing Med-Admin Documentation	0.50%	0.42%	0.47%	0.33%	0.44%	0.46%	0.52%	0.49%	0.56%	0.76%	0.93%	0.57%	0.54%		Figure 20
Percent of Medication Refusal	6.17%	5.57%	6.90%	7.44%	6.44%	5.84%	6.15%	5.91%	6.11%	5.74%	6.02%	6.48%	6.23%		Figure 21
SiteFM Work Orders Completed within 3 days	63%	70%	75%	75%	74%	67%	53%	62%	73%	71%	74%		68%		Figure 23
Total SiteFM Work Orders	515	503	509	435	466	456	522	557	569	505	562		509		
	821	715	682	581	632	682	982	900	784	712	756		750		

* National Public Rate, NASMHPD Research Institute, National Research Institute (NRI), Data as of June 2013, Published in November 2013.

** Percentage of patients returning within 30 days of discharges that occurred during month

*** Refer to the next page [UI & Medication]

Performance Related Information for Staff & Managers

3. Unusual Incident & Medication

Data Source: UI DB, MV DB, ADR DB, and Avatar

Updated as of 08/08/16

Category		Aug-15	Sep-15	Oct-15	Nov-15	Dec-15	Jan-16	Feb-16	Mar-16	Apr-16	May-16	Jun-16	Jul-16	Monthly Average	Total (12mths)	NPR* (Jun-13)
Unusual Incidents (excluding MV)**	Total UIs	202	222	254	155	144	184	187	189	196	200	193	172	192	2298	
	Major UIs Only	115	141	154	91	95	115	110	114	114	109	118	94	114	1370	
	Pt Involved UI Only	187	205	244	148	136	170	174	178	190	194	181	158	180	2165	
	Patient UI Rate	22.2	25.3	28.9	17.9	15.9	19.8	21.7	21.1	23.2	23.0	22.5	19.8		21.8	
	Unique Pts Involved in UI	111	117	127	112	105	110	117	122	123	112	114	99	114	1369	
Selected Types of Incidents	Physical Assault	45	62	74	46	38	46	43	44	60	47	46	57	51	608	
	Aggressive Behavior	75	83	103	52	50	67	69	66	69	74	58	53	68	819	
	Psych Emergency	28	59	55	22	7	19	20	19	27	31	27	23	28	337	
	Fall	33	23	25	25	22	26	24	25	33	31	36	24	27	327	
	Injury	31	39	45	23	14	31	34	25	32	30	29	31	30	364	
Physical Assault Rate		5.3	7.6	8.8	5.6	4.5	5.3	5.4	5.2	7.3	5.6	5.7	7.1		6.1	
UI by Severity	Catastrophe	0	0	0	0	0	0	0	0	0	0	0	0	0	0	
	High	22	37	42	20	15	29	25	28	25	30	24	22	27	319	
	Medium	65	84	100	31	43	42	52	49	55	52	54	48	56	675	
	Low	115	101	112	104	86	113	110	112	116	118	115	102	109	1304	
Physical Assaults by Severity	High	4	9	20	7	3	8	11	8	9	9	4	8	13	100	
	Medium	19	25	36	11	8	15	17	15	22	15	19	28	19	230	
	Low	22	28	18	28	27	23	15	21	29	23	23	21	23	278	
Total Patients who Fell		32	22	26	25	20	27	24	24	33	28	34	27	27	322	
Patient Fall Rate		3.79	2.71	3.08	3.02	2.34	3.14	3.00	2.84	4.02	3.32	4.23	3.38		3.24	
Total Staff who Fell		2	2	4	0	3	0	4	2	1	3	2	5	2	28	
Total Patients Injured***		20	32	34	15	9	25	23	12	24	19	20	20	21	253	
Patients with Major Injuries***		3	3	1	3	1	0	1	2	2	1	0	1	2	18	
Patient Injury Rate***		0.36	0.37	0.12	0.36	0.12	0.00	0.12	0.24	0.24	0.12	0.00	0.13		0.18	0.38
Total Staff Injured**		10	10	23	10	6	8	21	12	10	11	14	16	13		
Total UIs Documented in Avatar		0	0	0	0	1	0	1	1	2	1	0	1	1	8	
Elopement Rate		0.00	0.00	0.00	0.00	0.12	0.00	0.12	0.12	0.24	0.12	0.00	0.13		0.08	0.13
Med Variance (MV) Reports**		12	14	36	24	36	20	13	14	24	26	12	22	21	253	
MV Rate		1.42	1.73	4.27	2.90	4.22	2.33	1.62	1.66	2.93	3.08	1.49	2.75		2.54	
Adverse Drug Reactions Reports		3	1	0	3	2	2	0	0	0	7	1	0	2	19	
ADR Rate		0.36	0.12	0.00	0.36	0.23	0.23	0.00	0.00	0.00	0.83	0.12	0.00		0.19	
Total Med Administrations Scheduled		104695	99956	105811	102613	105331	111076	103422	108400	105969	109074	104020	102274		1262641	
Total Missing Documentations		522	423	500	336	459	513	539	533	593	827	967	580		6792	
Percent of Missing Documentation		0.50%	0.42%	0.47%	0.33%	0.44%	0.46%	0.52%	0.49%	0.56%	0.76%	0.93%	0.57%		0.54%	
Total Medication Doses Refused		6463	5572	7303	7635	6788	6487	6356	6403	6480	6260	6263	6625		78635	
Percent of Medication Refusal		6.17%	5.57%	6.90%	7.44%	6.44%	5.84%	6.15%	5.91%	6.11%	5.74%	6.02%	6.48%		6.23%	
Total STAT Orders		138	182	251	112	149	110	138	128	164	139	140	165	151		Figure 22
Total STAT Events****		62	83	119	53	66	52	71	52	80	65	67	74	70		
Total Patients with 1+ STAT Events		34	38	49	31	18	37	37	29	25	24	31	28	32		
Total Patients with 3+ STAT Events		7	11	15	2	5	3	6	6	7	10	8	8	7		

* National Public Rate, NASMHPD Research Institute, National Research Institute (NRI), Data as of June 2013, Published in November 2013.

** Numbers may change if any additional UI report is made after the data run date from UI database (around the 15th of the following month); According to the revised UI policy as of November 4, 2013, a medication variance (MV) incident became no longer considered to be an unusual incident, and a medication or vital sign refusal incident is not longer an UI as of May 2014. UI data for the past 12 months in this report has been updated to reflect this change and reanalyzed in order to show the UI trend in consistent logic.

*** Injury is broadly defined to include any type of injuries regardless of the cause or severity level. The total number of patients injured represents all of the reported injuries including minor injuries treated with first aid alone. However, the patient injury rate considers only the number of patient injuries that required beyond first-aid level treatment based on the NRI definition and the patient injury rate is the number of 'major' patient injuries per every 1000 inpatient days

**** One STAT event may involve more than one STAT order for the same patient. Any orders placed within 20 minute timeframe are considered to belong to one STAT event. All STAT order counts are from Pharmacy only...no LABS orders,etc...

Performance Related Information for Staff & Managers

4. Restraint & Seclusion

Data Source: Restraint/Seclusion Log and UI DB (for # of total events and patients) and Avatar (for patient days/hours)

Updated as of 08/08/16

Category		Aug-15	Sep-15	Oct-15	Nov-15	Dec-15	Jan-16	Feb-16	Mar-16	Apr-16	May-16	Jun-16	Jul-16	Monthly Average	Total (12mths)	NPR* (Jun-13)
Number of Restraint Events	Mechanical	1	3	8	1	3	4	10	10	10	7	22	21	8.3	100	
	Physical Hold	27	38	67	21	20	34	37	36	36	28	35	54	36.1		
	Total	28	41	75	22	23	38	47	46	46	35	57	75	44.4		
Number of Unique Patients Restrained	Mechanical	1	2	6	1	1	3	6	9	9	5	10	9	5.2		
	Physical Hold	17	22	28	16	18	21	20	27	24	17	18	22	20.8		
	Total	18	24	34	17	19	24	26	36	33	22	28	31	26.0		
Percentage of Patients Restrained**	Mechanical	0.3%	0.7%	1.9%	0.3%	0.3%	1.0%	1.9%	2.9%	2.9%	1.6%	3.2%	3.0%	1.7%		
	Physical Hold	5.5%	7.3%	9.0%	5.3%	5.8%	6.7%	6.3%	8.7%	7.7%	5.4%	5.8%	7.3%	6.7%		
	Total	5.8%	7.9%	10.9%	5.6%	6.2%	7.7%	8.1%	11.6%	10.6%	7.1%	9.0%	10.3%	8.4%		5.8%
Total Restraint Hours (h:mm)**	Mechanical	0:05	2:45	10:48	8:35	4:55	5:17	19:50	26:37	38:36	17:15	40:01	25:41	16:42	200:25	
	Physical Hold	1:36	3:22	6:35	1:42	1:35	2:36	3:43	2:08	2:11	3:47	2:04	3:47	2:55	6 mths	
	Total	1:41	6:07	17:23	10:17	6:30	7:53	23:33	28:45	40:47	21:02	42:05	29:28	19:37	6 mths	
Restraint Hours Rate**	Mechanical	0.000	0.014	0.053	0.043	0.024	0.026	0.103	0.131	0.196	0.085	0.207	0.134	0.084	12 mths	
	Physical Hold	0.008	0.017	0.033	0.009	0.008	0.013	0.019	0.011	0.011	0.019	0.011	0.020	0.015	6 mths	
	Total	0.008	0.031	0.086	0.052	0.032	0.038	0.123	0.142	0.207	0.104	0.218	0.154	0.099	6 mths	0.71
Number of Seclusion Events		18	37	40	13	12	22	17	16	22	21	13	20	20.9	251	
Number of Unique Patients Secluded		15	13	16	12	10	16	13	11	13	13	7	14	12.8		
Percentage of Patients Secluded		4.8%	4.3%	5.1%	4.0%	3.2%	5.1%	4.1%	3.5%	4.2%	4.2%	2.2%	4.7%	4.1%		2.4%
Total Seclusion Hours (h:mm)		12:36	50:35	56:52	8:33	9:38	20:22	26:08	18:52	38:38	27:49	15:05	23:55	25:45	309:03	
Seclusion Hours Rate		0.062	0.260	0.281	0.043	0.047	0.099	0.136	0.093	0.196	0.137	0.078	0.125		0.129	0.44

* National Public Rate, NASMHPD Research Institute, National Research Institute (NRI), Data as of June 2013, Published in November 2013.

** Restraint data prior to April 2015 includes only mechanical restraints. The Hospital's restraint policy has been revised to consider a physical hold a restraint and data as of April 2015 reflects this change. The duration of each physical hold event is counted as one (1) minute as a physical hold is ordered/used only as a temporary intervention that lasts less than a minute to break up any physical altercations or to administer emergency medications.

Performance Related Information for Staff & Managers

5. Major Unusual Incidents by Incident Location/Unit

Data Source: UI DB

Updated as of 08/08/16

Category		Aug-15	Sep-15	Oct-15	Nov-15	Dec-15	Jan-16	Feb-16	Mar-16	Apr-16	May-16	Jun-16	Jul-16	Monthly Average	Total (12mths)	Percent
Total Unusual Incidents		202	222	254	155	144	184	187	189	196	200	193	172	192	2298	100%
Incident Location	1A	8	16	6	6	13	9	11	8	7	8	5	7	9	104	5%
	1B	21	19	18	21	20	7	12	12	18	14	12	12	16	186	8%
	1C	19	12	15	12	14	13	14	16	14	32	17	19	16	197	9%
	1D	17	22	24	11	11	30	30	21	27	30	22	25	23	270	12%
	1E	15	29	21	9	6	14	8	10	5	7	24	22	14	170	7%
	1F	17	30	46	16	15	14	16	18	32	17	22	15	22	258	11%
	1G	21	12	17	13	15	20	13	14	26	12	18	14	16	195	8%
	2A	4	14	11	0	8	10	4	3	4	9	7	1	6	75	3%
	2B	3	4	1	4	2	3	9	8	6	6	4	2	4	52	2%
	2C	14	15	35	17	12	12	23	27	18	14	12	8	17	207	9%
	2D	23	14	27	16	7	20	12	14	14	18	20	15	17	200	9%
	TLC	18	17	26	23	8	19	17	22	13	21	18	16	18	218	9%
	Other	22	18	7	7	13	13	18	16	12	12	12	16	14	166	7%
Physical Assault		45	62	74	46	38	46	43	44	60	47	46	57	51	608	100%
Incident Location	1A	1	2	0	2	6	1	0	3	1	1	1	0	2	18	3%
	1B	3	1	1	5	3	0	0	2	4	2	1	2	2	24	4%
	1C	8	4	4	5	3	6	1	6	4	8	4	11	5	64	11%
	1D	2	6	9	3	3	7	14	7	10	7	5	9	7	82	13%
	1E	4	10	4	2	1	5	1	1	0	6	9	7	4	50	8%
	1F	4	17	28	5	6	6	3	5	15	2	8	8	9	107	18%
	1G	7	6	4	1	4	4	2	2	11	3	3	6	4	53	9%
	2A	0	2	1	0	0	1	1	0	1	1	0	0	1	7	1%
	2B	0	0	0	0	6	1	1	1	0	0	0	1	1	10	2%
	2C	3	4	11	9	2	8	8	4	5	4	2	2	5	62	10%
	2D	10	4	7	5	2	4	5	2	6	8	4	6	5	63	10%
	TLC - Intensive	3	2	5	7	1	1	6	5	3	4	7	3	4	47	8%
	TLC - Transitional	0	2	0	2	1	2	1	3	0	1	1	2	1	15	2%
	Other	0	2	0	0	0	0	0	3	0	0	1	0	1	6	1%

Performance Related Information for Staff & Managers

5. Major Unusual Incidents by Incident Location/Unit

Data Source: UI DB

Updated as of 08/08/16

Category		Aug-15	Sep-15	Oct-15	Nov-15	Dec-15	Jan-16	Feb-16	Mar-16	Apr-16	May-16	Jun-16	Jul-16	Monthly Average	Total (12mths)	Percent
Aggressive Behavior		75	83	103	52	50	67	69	66	69	74	58	53	68	819	135%
Incident Location	1A	1	1	4	1	4	0	4	1	1	0	0	1	2	18	3%
	1B	9	7	2	5	4	2	4	0	1	2	0	5	3	41	7%
	1C	7	3	4	5	9	3	8	8	9	14	8	3	7	81	13%
	1D	6	11	10	4	6	18	13	10	14	19	14	12	11	137	23%
	1E	6	14	15	4	3	5	5	1	1	1	2	8	5	65	11%
	1F	4	9	12	4	6	3	6	9	12	6	10	6	7	87	14%
	1G	11	3	8	6	5	8	5	4	5	3	7	3	6	68	11%
	2A	3	10	7	0	3	3	2	0	2	4	1	1	3	36	6%
	2B	0	0	0	0	0	2	2	1	0	3	0	1	1	9	1%
	2C	5	6	17	2	1	7	8	18	12	7	5	1	7	89	15%
	2D	10	8	15	7	3	10	2	6	4	6	5	4	7	80	13%
	TLC - Intensive	3	4	5	8	2	0	5	4	3	0	2	4	3	40	7%
	TLC - Transitional	3	4	2	4	1	4	0	4	3	7	4	1	3	37	6%
	Other	7	3	2	2	3	2	5	0	2	2	0	3	3	31	5%
Psych Emergency		28	59	55	22	7	19	20	19	27	31	27	23	28	337	55%
Incident Location	1A	0	0	1	0	0	0	0	0	0	0	0	0	0	1	0%
	1B	5	4	3	1	0	0	0	0	0	0	0	0	1	13	2%
	1C	2	2	2	2	1	2	0	3	2	7	6	3	3	32	5%
	1D	3	9	12	7	3	10	12	7	4	8	7	4	7	86	14%
	1E	3	15	7	1	1	2	0	1	0	3	6	7	4	46	8%
	1F	3	14	13	3	0	2	3	2	15	2	3	5	5	65	11%
	1G	3	3	2	2	1	1	1	1	1	0	1	1	1	17	3%
	2A	1	5	5	0	0	0	0	0	0	0	0	0	1	11	2%
	2B	0	0	0	0	0	1	0	0	0	1	0	1	0	3	0%
	2C	2	3	5	2	1	1	2	4	3	1	2	1	2	27	4%
	2D	2	1	2	2	0	0	0	0	0	4	1	0	1	12	2%
	TLC - Intensive	1	1	2	1	0	0	1	0	1	2	1	0	1	10	2%
	TLC - Transitional	1	0	1	1	0	0	0	1	1	2	0	1	1	8	1%
	Other	2	2	0	0	0	0	1	0	0	1	0	0	1	6	1%

Performance Related Information for Staff & Managers

5. Major Unusual Incidents by Incident Location/Unit

Data Source: UI DB

Updated as of 08/08/16

Category		Aug-15	Sep-15	Oct-15	Nov-15	Dec-15	Jan-16	Feb-16	Mar-16	Apr-16	May-16	Jun-16	Jul-16	Monthly Average	Total (12mths)	Percent	
Fall		33	23	25	25	22	26	24	25	33	31	36	24	27	327	100%	
Incident Location	1A	3	9	1	2	3	2	3	3	4	2	4	5	3	41	13%	
	1B	8	7	5	8	4	2	3	6	7	8	8	3	6	69	21%	
	1C	0	1	1	1	1	1	1	0	0	2	2	0	1	10	3%	
	1D	2	0	2	0	1	0	1	3	1	0	0	5	1	15	5%	
	1E	3	1	2	2	0	4	1	3	3	3	3	2	2	27	8%	
	1F	2	0	3	1	1	2	3	2	3	2	4	1	2	24	7%	
	1G	4	0	1	2	5	7	1	1	4	5	3	2	3	35	11%	
	2A	0	1	1	0	1	0	0	0	0	0	0	0	0	3	1%	
	2B	3	0	0	1	0	0	4	0	3	3	1	0	1	15	5%	
	2C	0	1	5	4	2	2	4	0	3	0	2	0	2	23	7%	
	2D	2	1	0	0	2	3	1	2	2	2	4	2	2	21	6%	
	TLC - Intensive	2	0	4	3	1	2	0	1	1	1	1	2	2	18	6%	
	TLC - Transitional	1	0	0	1	1	1	0	1	0	0	0	1	1	6	2%	
	Other	3	2	0	0	0	0	2	3	2	3	4	1	2	20	6%	
Physical Injury		31	39	45	23	14	31	34	25	32	30	29	31	30	364	100%	
Incident Location	1A	0	1	0	1	1	2	0	0	1	0	0	0	1	6	2%	
	1B	3	3	1	2	1	1	3	0	4	2	2	1	2	23	6%	
	1C	8	7	3	0	0	5	0	4	1	9	1	4	4	42	12%	
	1D	4	4	9	3	2	5	8	6	5	4	3	6	5	59	16%	
	1E	3	3	1	1	0	2	1	3	0	2	8	6	3	30	8%	
	1F	3	9	17	5	2	5	3	1	10	2	4	1	5	62	17%	
	1G	2	3	3	1	1	1	2	1	3	1	2	2	2	22	6%	
	2A	0	1	1	0	0	0	0	0	0	0	0	0	0	2	1%	
	2B	1	2	0	1	1	1	2	1	2	0	1	0	1	12	3%	
	2C	0	3	5	4	3	1	5	1	3	0	2	2	2	29	8%	
	2D	3	1	3	0	1	3	3	2	2	2	0	5	2	25	7%	
	TLC - Intensive	0	1	2	4	0	3	3	3	3	1	2	3	1	2	23	6%
	TLC - Transitional	0	0	0	0	0	1	1	1	0	1	0	2	1	6	2%	
	Other	4	1	0	1	2	1	3	2	0	5	3	1	2	23	6%	

* Not every incident is a major incident. This counts only those incidents that were classified to be major based on the policy.

Performance Related Information for Staff & Managers

6A. Demographic Information of Individuals in Care

Data Source: Avatar

Updated as of 08/08/16 #####

Category	Sub-group	Aug-15	Sep-15	Oct-15	Nov-15	Dec-15	Jan-16	Feb-16	Mar-16	Apr-16	May-16	Jun-16	Jul-16	Monthly Average	Percent*
Total Active (on Roll) at End of Month*		278	272	275	282	282	283	282	277	274	277	270	259	276	
Gender	Female	85	81	85	88	92	89	87	87	87	89	83	74	86	31.0%
	Male	193	191	190	194	190	194	195	190	187	188	186	185	190	69.0%
Age	Median Age (Years)	55 yrs	56 yrs	56 yrs	56 yrs	56 yrs	55 yrs	55 yrs	55 yrs	55 yrs	55 yrs	54 yrs	54 yrs	55 yrs	Figure 24
	<30 years old	44	40	40	40	42	43	45	38	33	34	26	31	38	13.8%
	>=30 and <40 years old	32	31	31	35	32	33	37	39	44	45	46	45	38	13.6%
	>=40 and <50 years old	26	22	29	31	30	31	27	27	28	26	29	23	27	9.9%
	>=50 and <60 years old	72	68	62	63	61	62	61	63	57	62	65	60	63	22.8%
	>=60 years old	104	111	113	113	117	114	112	110	112	110	103	100	110	39.8%
Legal Status of Individuals on Roll at End of Month	Emergency	25	25	24	23	26	15	20	17	16	20	18	14	20	7.3%
	Inpatient Commitment	33	32	28	30	31	35	35	34	34	34	34	32	33	11.8%
	Outpatient Commitment	28	25	27	30	26	34	31	29	31	30	29	26	29	10.5%
	Voluntary	37	37	40	41	41	44	42	41	39	39	37	39	40	14.4%
	Non-Protesting	0	0	0	0	0	0	0	0	0	0	0	0	0	0.0%
	Civil Sub-total	123	119	119	124	124	128	128	121	120	123	118	111	122	44.0%
	DC Exam	36	39	43	46	46	37	37	44	42	38	45	47	42	15.1%
	Mentally Incompetent	36	32	31	29	31	38	36	34	36	39	32	30	34	12.2%
	Forensic Pre-trial Sub-total	72	71	74	75	77	75	73	78	78	77	77	77	75	27.3%
	NGBRI - DC	71	70	70	71	68	67	68	66	65	66	64	61	67	24.4%
NGBRI - US	8	8	8	8	8	8	7	7	6	6	6	6	7	2.6%	
NGBRI - VI	1	1	1	1	1	1	1	1	1	1	1	1	1	0.4%	
Dual Commitment	0	0	0	0	0	0	0	0	0	0	0	0	0	0.0%	
Post Trial Mental Exam PTME	0	0	0	0	1	1	2	1	1	1	0	0	1	0.2%	
Sexual Psychopath (Miller Act)	3	3	3	3	3	3	3	3	3	3	3	3	3	1.1%	
Forensic Post-trial Sub-total	83	82	82	83	81	80	81	78	76	77	74	71	79	28.6%	
Length of Stay	<30 Days	36	22	35	26	26	29	38	29	32	36	34	30	31	11.3%
	>=30 ~ <365 Days	95	101	90	103	107	105	92	96	88	85	85	84	94	34.2%
	>= 1 Year & < 2 Years	33	34	33	36	33	30	33	31	34	36	30	28	33	11.8%
	>= 2 Years & < 5 Years	30	31	33	33	34	36	36	39	40	41	42	40	36	13.1%
	>= 5 Years & < 20 Years	48	48	48	48	46	48	48	47	46	45	44	43	47	16.9%
	>= 20 Years	36	36	36	36	36	35	35	35	34	34	34	34	35	12.7%
	Median LOS (Days)	436 d	466 d	465 d	462 d	484 d	494 d	466 d	496 d	475 d	475 d	475 d	506 d	475 d	Figure 25
	Median LOS - Civil	501 d	540 d	571 d	567 d	568 d	562 d	573 d	604 d	626 d	627 d	632 d	637 d	584 d	
	Median LOS - Pre-trial	59 d	78 d	63 d	69 d	76 d	68 d	55 d	56 d	58 d	61 d	57 d	52 d	63 d	
	Median LOS - Post-trial	3988 d	4110 d	4141 d	4079 d	4110 d	4141 d	4170 d	4293 d	4323 d	3998 d	4384 d	5534 d	4273 d	
Average LOS (Days)	2333 d	2400 d	2391 d	2356 d	2341 d	2324 d	2339 d	2406 d	2362 d	2355 d	2383 d	2461 d	2371 d		
Average LOS - Civil	1604 d	1666 d	1686 d	1648 d	1661 d	1647 d	1651 d	1742 d	1730 d	1708 d	1741 d	1829 d	1693 d		
Average LOS - Pre-trial	115 d	126 d	123 d	130 d	138 d	133 d	131 d	139 d	139 d	147 d	124 d	122 d	131 d		
Average LOS - Post-trial	5339 d	5433 d	5461 d	5425 d	5474 d	5531 d	5553 d	5654 d	5714 d	5510 d	5755 d	5986 d	5570 d		

* Counts the total number of individuals who are on the hospital roll at end of each month. This number serves as denominator to calculate percentage of each group.

Performance Related Information for Staff & Managers

6B. Demographic Information of Individuals in Care

Data Source: Avatar

Updated as of 08/08/16

Category	Sub-group	Aug-15	Sep-15	Oct-15	Nov-15	Dec-15	Jan-16	Feb-16	Mar-16	Apr-16	May-16	Jun-16	Jul-16	Monthly Average	Percent*	
Total Active (on Roll) at End of Month*		278	272	275	282	282	283	282	277	274	277	270	259	276		
Gender	Female	31%	30%	31%	31%	33%	31%	31%	31%	31%	32%	32%	29%	31%		
	Male	69%	70%	69%	69%	67%	69%	69%	69%	69%	68%	68%	71%	69%		
Age	Median Age (Years)	55 yrs	56 yrs	56 yrs	56 yrs	56 yrs	55 yrs	55 yrs	55 yrs	55 yrs	55 yrs	55 yrs	54 yrs	55 yrs		
	<30 yrs	16%	15%	15%	14%	15%	15%	16%	14%	14%	12%	12%	12%	14%		
	>=30 and <40 yrs	12%	11%	11%	12%	11%	12%	13%	14%	14%	16%	16%	17%	14%		
	>=40 and <50 yrs	9%	8%	11%	11%	11%	11%	10%	10%	10%	10%	9%	9%	10%		
	>=50 and <60 yrs	26%	25%	23%	22%	22%	22%	22%	22%	23%	23%	21%	22%	23%	23%	
	>=60 yrs	37%	41%	41%	40%	41%	40%	40%	40%	40%	40%	41%	40%	39%	40%	
Legal Status of Individuals on Roll at End of Month	Emergency	9%	9%	9%	8%	9%	5%	7%	6%	6%	6%	7%	5%	7%		
	Inpatient Commitment	12%	12%	10%	11%	11%	12%	12%	12%	12%	12%	12%	12%	12%		
	Outpatient Commitment	10%	9%	10%	11%	9%	12%	11%	10%	10%	11%	11%	10%	10%		
	Voluntary	13%	14%	15%	15%	15%	16%	15%	15%	15%	14%	14%	15%	14%		
	Non-Protesting	0%	0%	0%	0%	0%	0%	0%	0%	0%	0.0%	0.0%	0.0%	0%		
	Civil Sub-total	44%	44%	43%	44%	44%	45%	45%	44%	44%	44%	44%	44%	43%	44%	
	DC Exam	13%	14%	16%	16%	16%	13%	13%	16%	16%	15%	14%	18%	15%		
	Mentally Incompetent	13%	12%	11%	10%	11%	13%	13%	12%	12%	13%	14%	12%	12%		
	Forensic Pre-trial Sub-total	26%	26%	27%	27%	27%	27%	26%	28%	28%	28%	28%	28%	30%	27%	
	NGBRI - DC	26%	26%	25%	25%	24%	24%	24%	24%	24%	24%	24%	24%	24%	24%	
	NGBRI - US	3%	3%	3%	3%	3%	3%	3%	2%	3%	3%	2%	2%	2%	3%	
	NGBRI - VI	0%	0%	0%	0%	0%	0%	0%	0%	0%	0%	0%	0%	0%	0%	
	Dual Commitment	0%	0%	0%	0%	0%	0%	0%	0%	0%	0%	0%	0%	0%	0%	
	Sexual Psychopath (Miller Ac)	1%	1%	1%	1%	1%	1%	1%	1%	1%	1%	1%	1%	1%	1%	
Forensic Post-trial Sub-total	30%	30%	30%	29%	29%	28%	29%	28%	28%	28%	28%	28%	27%	29%		
Length of Stay	Median LOS (Days)	436 d	466 d	465 d	462 d	484 d	494 d	466 d	496 d	496 d	475 d	475 d	506 d	477 d		
	Average LOS (Days)	2333 d	2400 d	2391 d	2356 d	2341 d	2324 d	2339 d	2406 d	2406 d	2362 d	2355 d	2461 d	2373 d		
	<30 days	13%	8%	13%	9%	9%	10%	13%	10%	10%	12%	13%	12%	11%		
	>=30 days & <365 days	34%	37%	33%	37%	38%	37%	33%	35%	35%	32%	31%	32%	34%		
	>= 1 year & < 2 years	12%	13%	12%	13%	12%	11%	12%	11%	11%	12%	13%	11%	12%		
	>= 2 years & < 5 years	11%	11%	12%	12%	12%	13%	13%	14%	14%	15%	15%	15%	13%		
	>= 5 years & < 20 years	17%	18%	17%	17%	16%	17%	17%	17%	17%	17%	17%	16%	17%	17%	
>= 20 years	13%	13%	13%	13%	13%	12%	12%	13%	13%	12%	12%	13%	13%			

* Counts the total number of individuals who are on the hospital roll at end of each month. This number serves as denominator to calculate percentage of each group.