



Government of the District of Columbia
Department of Behavioral Health (DBH)



PRISM

Performance Related Information for Staff and Managers



JULY 2015

Office of Statistics and Reporting (OSR), 08/18/15

Table of Contents

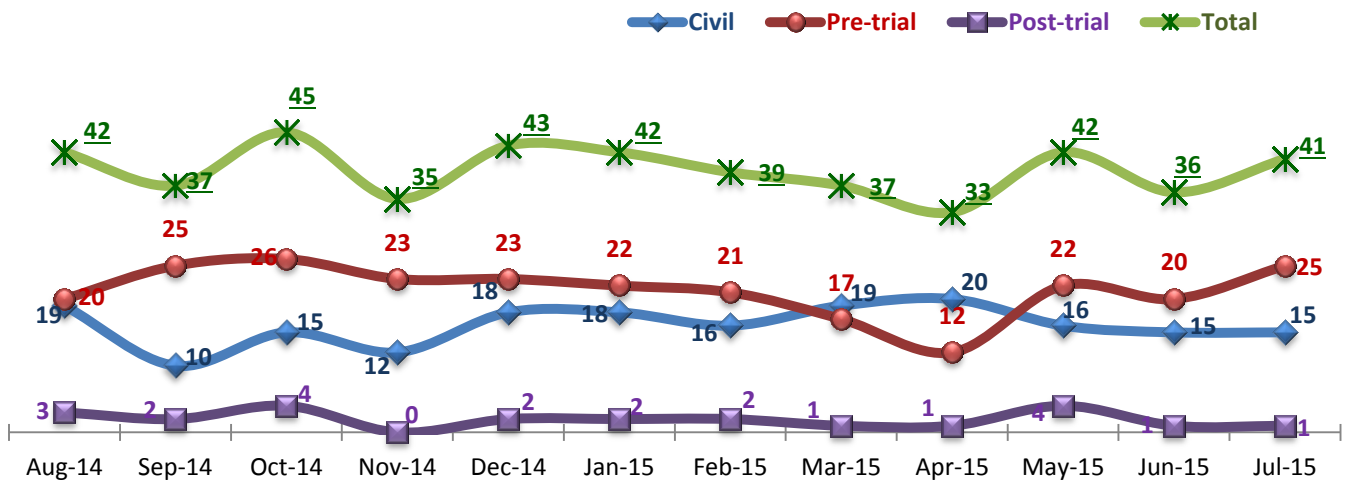
1. Admissions to SEH	1
2. Discharges from SEH	1
3. Average Daily Census.....	2
4. Transfers.....	2
5. 30-Day Readmission Rate	2
6. Unusual Incidents	3
7. Patient-Involved Unusual Incidents	3
8. Admissions vs. Patient UI Rate	4
9. Unusual Incidents by Severity.....	4
10. Selected Types of Incidents	4
11. Physical Assaults by Severity	5
12. Patient Injuries	5
13. Staff Injuries	5
14. Percent of Patients Restrained or Secluded	6
15. Restraint Hours Rate & Seclusion Hours Rate	6
16. Elopements.....	6
17. Reported Medication Variance Events.....	7
18. Reported Adverse Drug Reactions	7
19. Percent of Missing Documentation on Med-Administration.....	8
20. Medication Refusal Rate*.....	8
21. Number of STAT Events and Individuals Involved	8
22. Percentage of SiteFM Work Orders Completed within 3 Days	9
23. Demographics and Length of Stay.....	10

- Appendix 1) Table – Census, Admissions & Discharges
- Appendix 2) Table – Key Performance Indicators
- Appendix 3) Table – Unusual Incident & Medication
- Appendix 4) Table – Restraint & Seclusion
- Appendix 5) Table – Demographic Information of Individuals in Care
- Appendix 6) Table – Unusual Incidents by Unit

Key Trends: Admission, Discharge, Transfer, Census, and Readmissions (1~6)

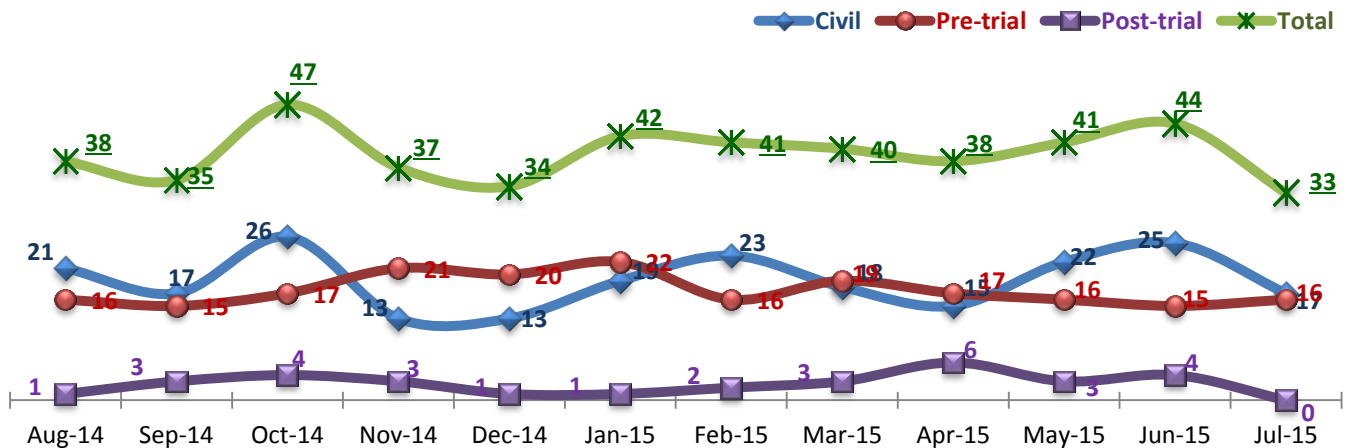
- The number of admissions in July 2015 (41) is higher than that in June (36) and is above the monthly average of admissions in the last 12 months (39), whereas the number of discharges in July (33) decreased significantly and is far below the monthly average of discharges (39).
- Despite the fact that admissions exceeded discharges, the average daily census (ADC) for the month of July remained the same as June at 270 because the census during the first half of July was much lower than the census during the second half of the month.
- The 30-day readmissions rate for FY15 year-to-date is near the national average (NPR)¹ at 6.9%, but it is much higher than the Hospital's readmission rate in FY14 (2.3%). A majority of 30-day readmissions (68% of 25) in FY15 are those discharged with a civil legal status, including two readmissions in July. This is in contrast to FY14, when only 30% of 30-day readmissions were from *Civil* discharges.

1. Admissions to SEH



* Number of admissions to SEH inpatient program, including transfers from forensic outpatient to inpatient program.

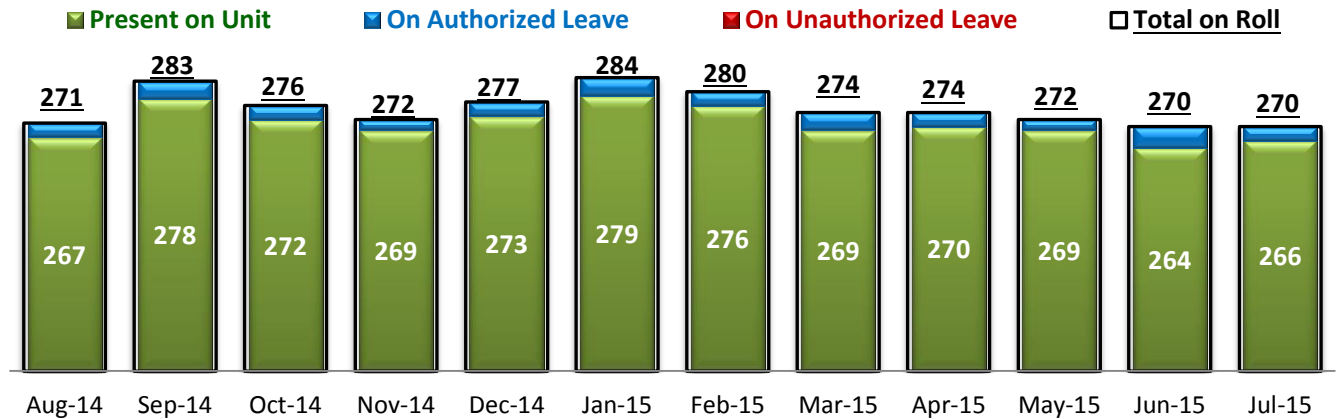
2. Discharges from SEH



* Number of discharges from SEH inpatient program, including transfers from inpatient to forensic outpatient program.

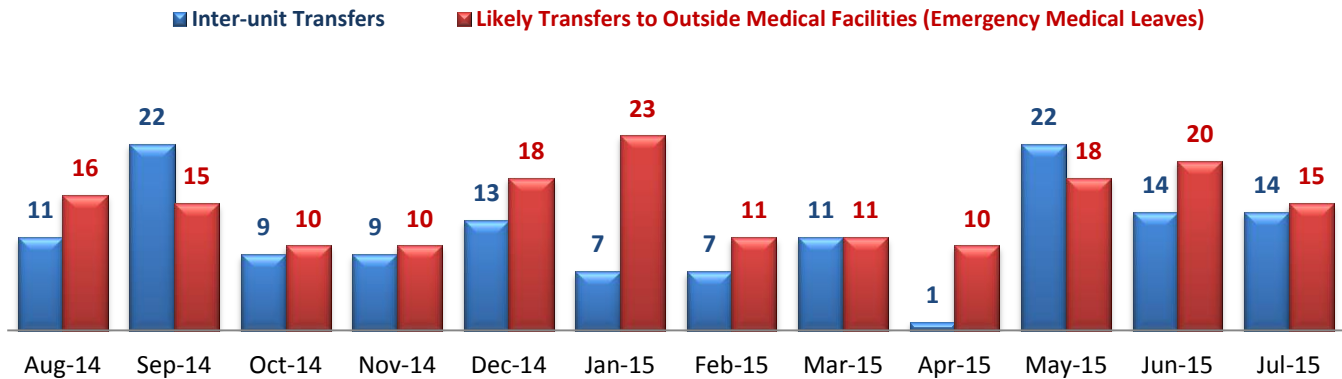
¹ NPR: National Public Rate as of June 2013 was published in November 2013 by National Association of State Mental Health Program Directors Research Institute (NRI), based on data collected from a number of state psychiatric hospitals nationwide.

3. Average Daily Census



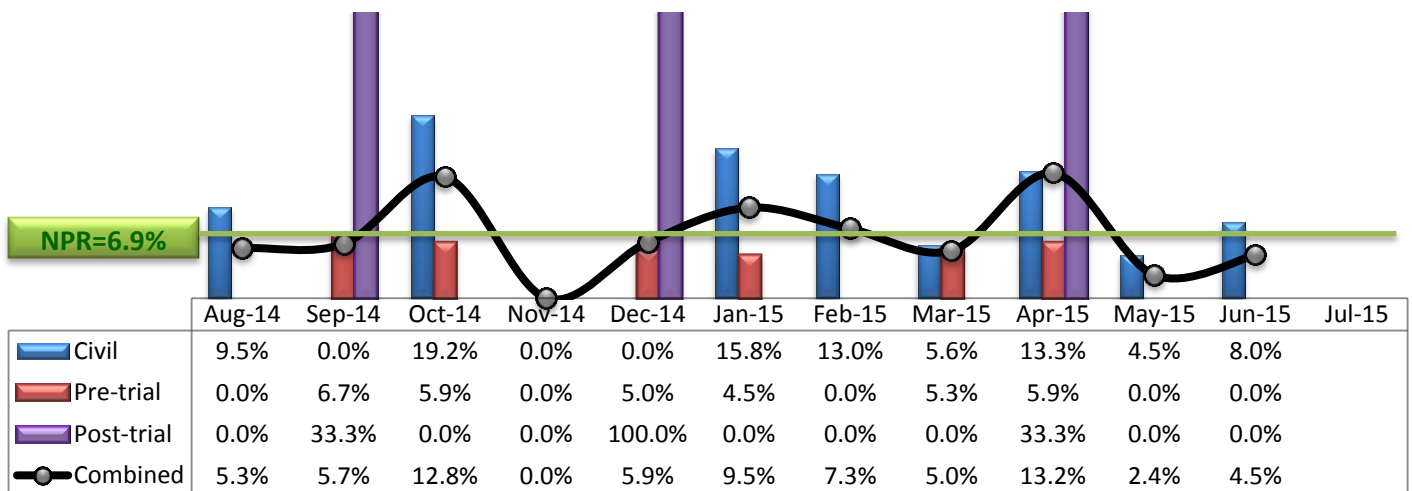
* Data above is the daily average number of individuals counted at 11:59 PM every day during each month.

4. Transfers



* Number of inter-unit transfers that occurred during month and number of emergency medical leaves that were initiated during month.

5. 30-Day Readmission Rate



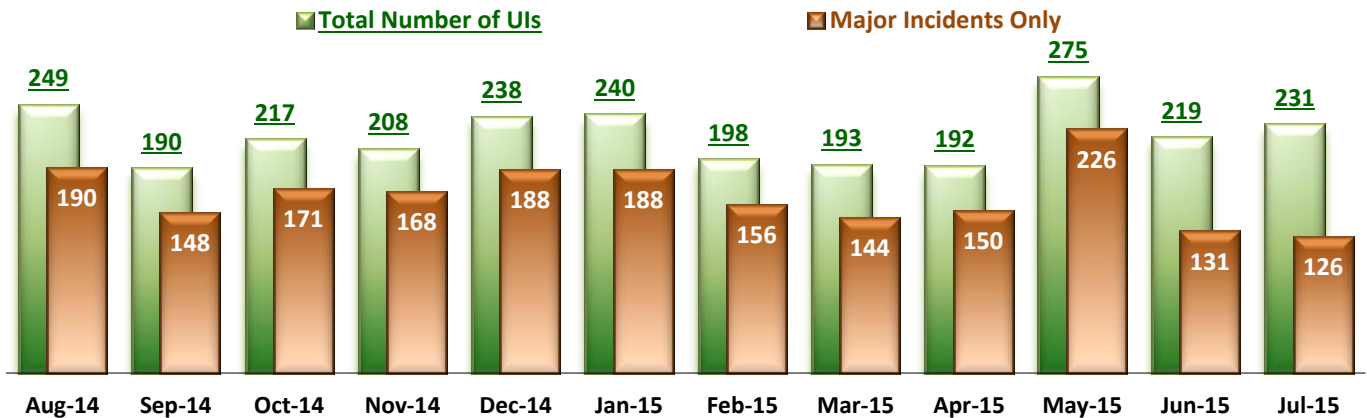
* Percent of discharges that returned to SEH within 30 days of discharges. It does not include those who may have been re-hospitalized at another psychiatric facility. This measure requires 30-day observation following discharge.

** The post-trial denominators (discharges) per month range only between one and six, making the monthly re-admission rate high when there is any. For example, in December 2014, there was only one post-trial discharge, which was readmitted within 30 days. Thus, the 30-day readmission rate for post-trial discharge for this month is 100%.

Key Trends: Unusual Incidents (6~16)

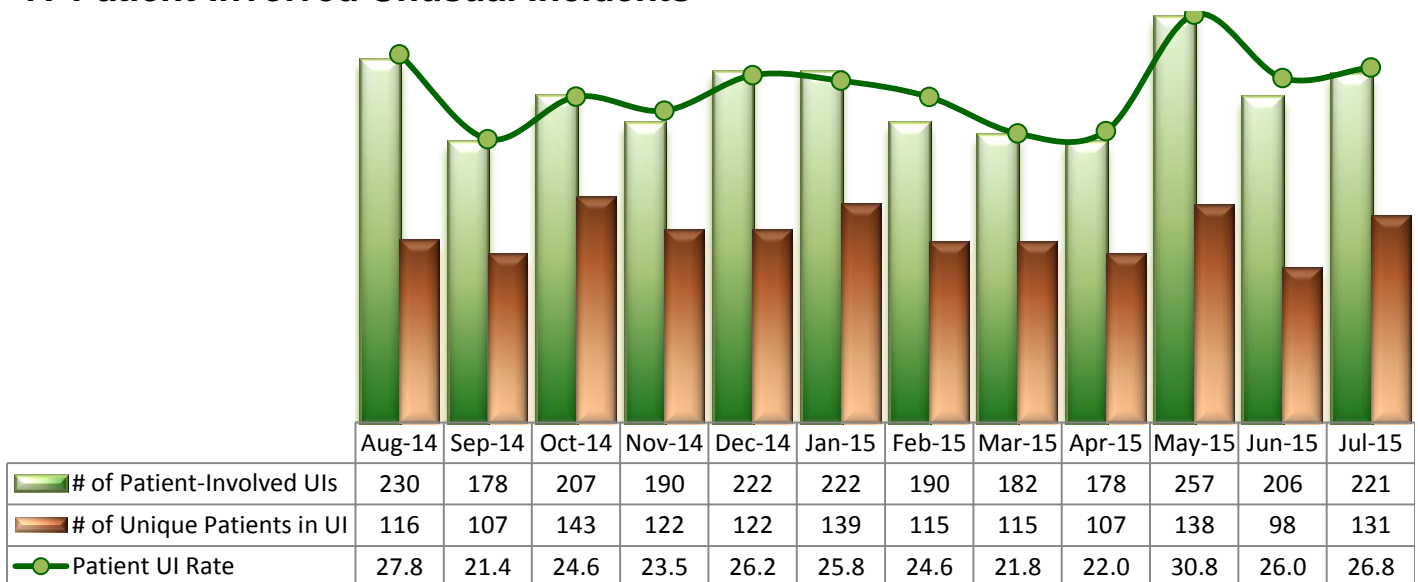
- In July 2015, the total number of unusual incidents (231 UIs) and the patient UI rate (26.8 per 1000 patient days) increased as the number of admissions increased in July. However, the level of the increase was marginal, and the number of major UIs and high severity incidents declined in July.
- In July, the number of UIs involving aggressive behaviors increased but they are largely low severity incidents and the number of physical assaults decreased. Incidents involving psychiatric emergencies and injury incidents increased but there was only one major patient injury and staff injuries decreased noticeably for the last two consecutive months.
- The restraint hours rate increased in July 2015 due in part to the fact that one individual was involved in multiple restraint events for an extended length of time, but the restraint hours rate is still far below the national average. The percent of unique individuals restrained and secluded both decreased in July.
- There were no elopements between July 2014 and April 2015 (for 10 months), but each of the past three months, between May and July 2015, had one elopement incident. All of those individuals who had eloped in the last three months returned to the Hospital.

6. Unusual Incidents



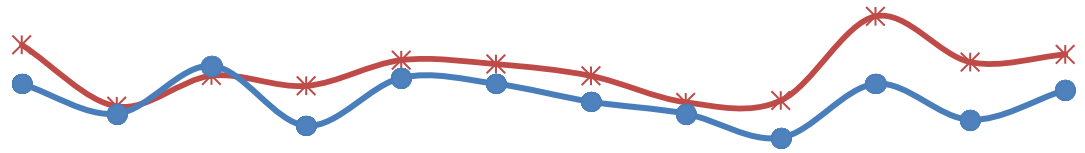
* A medication or vital sign refusal is no longer a UI since May 2014 and data above prior to May 2014 also excludes those incidents.

7. Patient-Involved Unusual Incidents



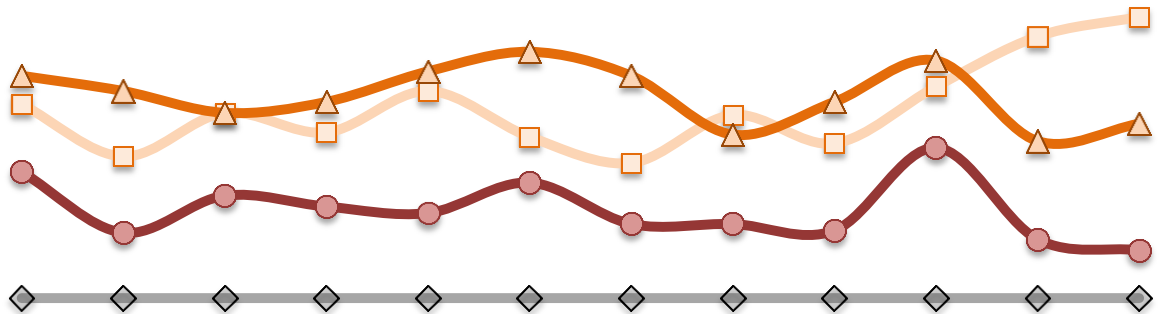
* The patient UI rate is the number of patient-involved unusual incidents reported for every 1000 inpatient days.

8. Admissions vs. Patient UI Rate



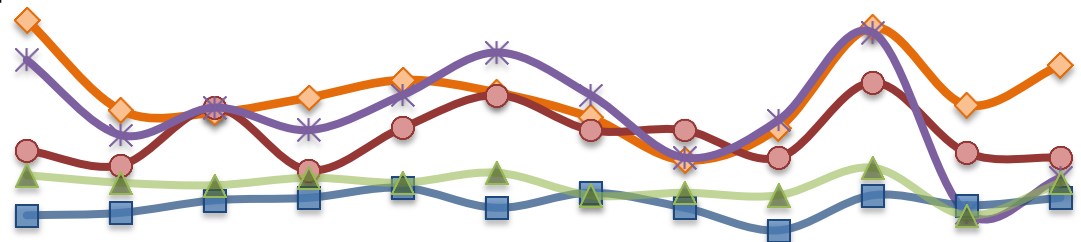
	Aug-14	Sep-14	Oct-14	Nov-14	Dec-14	Jan-15	Feb-15	Mar-15	Apr-15	May-15	Jun-15	Jul-15
✱ Patient UI Rate	27.8	21.4	24.6	23.5	26.2	25.8	24.6	21.8	22.0	30.8	26.0	26.8
● Admission	42	37	45	35	43	42	39	37	33	42	36	41

9. Unusual Incidents by Severity



	Aug-14	Sep-14	Oct-14	Nov-14	Dec-14	Jan-15	Feb-15	Mar-15	Apr-15	May-15	Jun-15	Jul-15
□ 1) Low	89	65	85	76	95	74	62	84	71	97	120	129
△ 2) Medium	102	95	85	90	104	113	102	75	90	109	72	80
● 3) High	58	30	47	42	39	53	34	34	31	69	27	22
◇ 4) Catstrp	0	0	0	0	0	0	0	0	0	0	0	0
Total UI	249	190	217	208	238	240	198	193	192	275	219	231

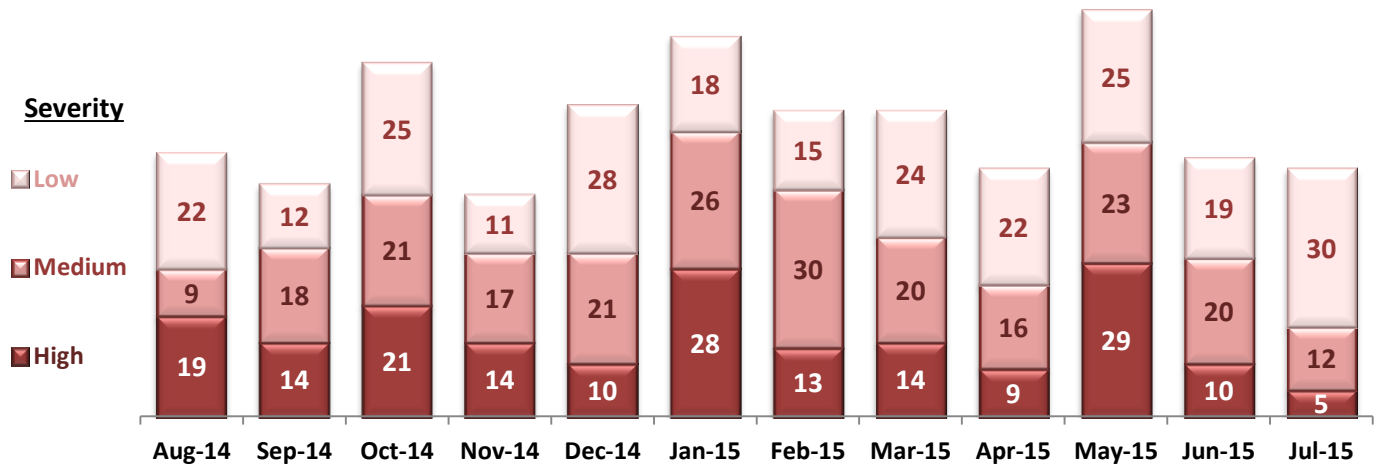
10. Selected Types of Incidents



	Aug-14	Sep-14	Oct-14	Nov-14	Dec-14	Jan-15	Feb-15	Mar-15	Apr-15	May-15	Jun-15	Jul-15
◇ Aggressive Behavior	102	66	65	71	78	73	63	46	59	99	68	84
● Physical Assault	50	44	67	42	59	72	58	58	47	77	49	47
✱ Pysch Emerg.	86	56	67	58	72	89	72	47	62	97	25	39
■ Fall	24	25	30	31	35	27	33	27	18	32	28	31
▲ Injury	40	37	36	39	37	41	32	33	32	43	24	37

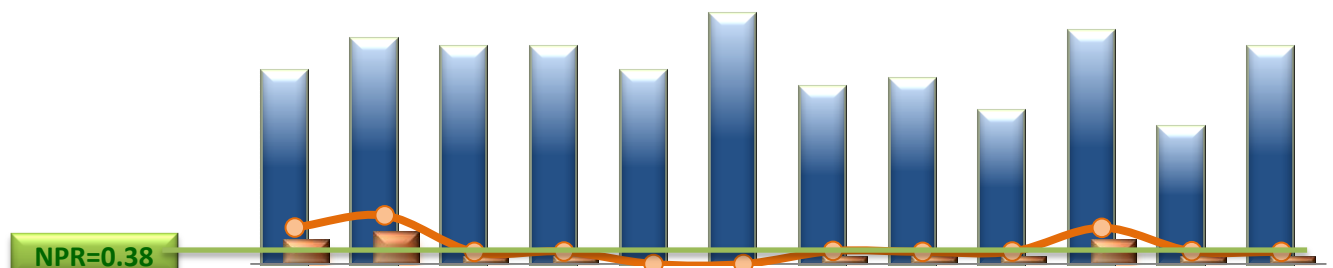
* These are incident types that are frequently reported. Some incidents may be counted in multiple categories. For example, a physical assault incident that accompanied psychiatric emergency and injury is counted under psychiatric emergency and injury as well as under physical assault. Injury is broadly defined to include any type of injuries regardless of the cause or severity level.

11. Physical Assaults by Severity



* Any physical assault that accompanies a code 13 or results in extensive injury needing off-unit treatment or transfer to ER is considered to be high severity, any physical assault that causes a minor injury that can be treated on unit is considered to be medium severity, and physical assault events that result in no injury are considered to be low severity.

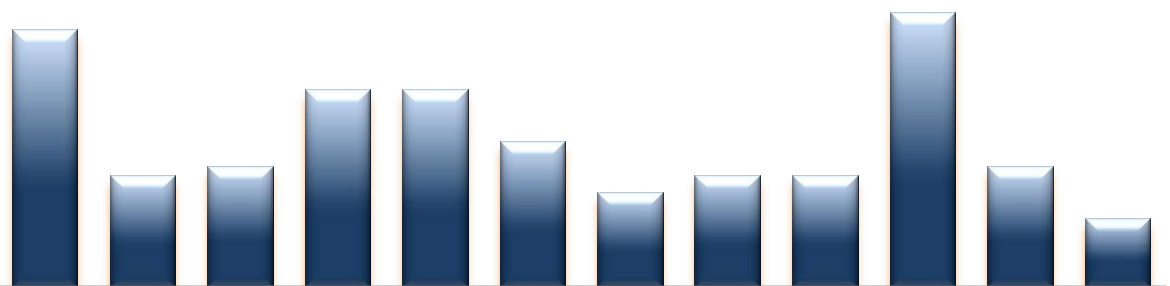
12. Patient Injuries



	Aug-14	Sep-14	Oct-14	Nov-14	Dec-14	Jan-15	Feb-15	Mar-15	Apr-15	May-15	Jun-15	Jul-15
Total Pts Injured	24	28	27	27	24	31	22	23	19	29	17	27
Major Pt Injuries*	3	4	1	1	0	0	1	1	1	3	1	1
Patient Injury Rate	0.36	0.48	0.12	0.12	0.00	0.00	0.13	0.12	0.12	0.36	0.13	0.12

* Injury is broadly defined to include any type of injuries regardless of the cause or severity level. The total number of patients injured represents all of the reported injuries including minor injuries treated with first aid alone. However, the patient injury rate considers only the number of patient injuries that required beyond first-aid level treatment based on the NRI definition and the patient injury rate is the number of 'major' patient injuries per every 1000 inpatient days

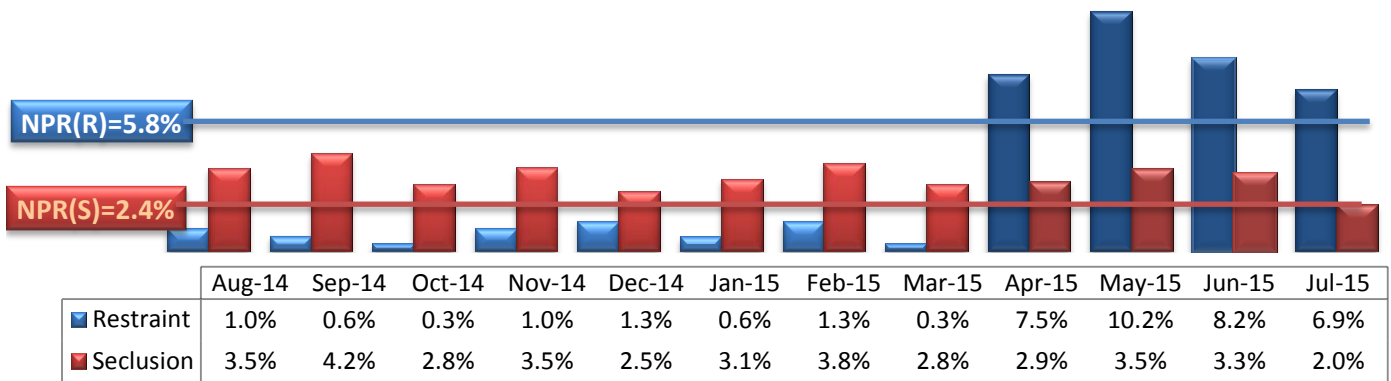
13. Staff Injuries



	Aug-14	Sep-14	Oct-14	Nov-14	Dec-14	Jan-15	Feb-15	Mar-15	Apr-15	May-15	Jun-15	Jul-15
# of Staff Injured	30	13	14	23	23	17	11	13	13	32	14	8

* Injury is broadly defined to include any type of injuries regardless of the cause or severity level. The total number of staff injured represents all of the reported staff injuries including minor injuries treated with first aid alone.

14. Percent of Patients Restrained or Secluded

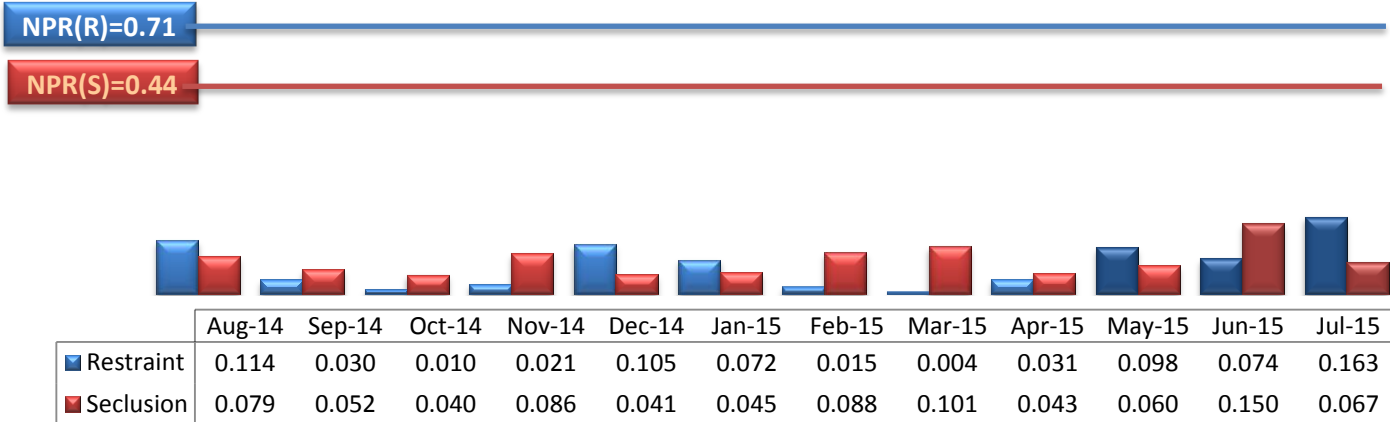


* Percent of unique patients who were restrained at least once and percent of unique patients who were secluded at least once. The denominator includes all individuals who were served in care >=1 day during month.

** Data prior to April 2015, the Hospital tracked only mechanical restraint events, but the Hospital's restraint policy has changed to include any physical holds. The sudden increase of the restraint data as of April 2015 reflects this change.

*** The previous PIRSM reports presented incorrect data for some months in the indicators 14 above and 15 below, and data herein has been updated to reflect the correct numbers.

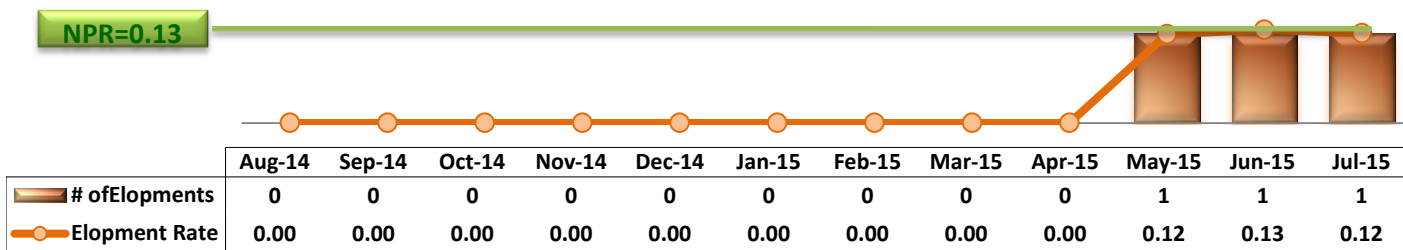
15. Restraint Hours Rate & Seclusion Hours Rate



* Restraint/Seclusion Hours Rate: Number of hours spent in restraint/seclusion for every 1000 inpatient hours.

** The duration of each physical hold event is counted as 1 minute as a physical hold is ordered and used only as a temporary intervention that lasts less than a minute to break up any physical conflicts or to administer emergency medications.

16. Elopements

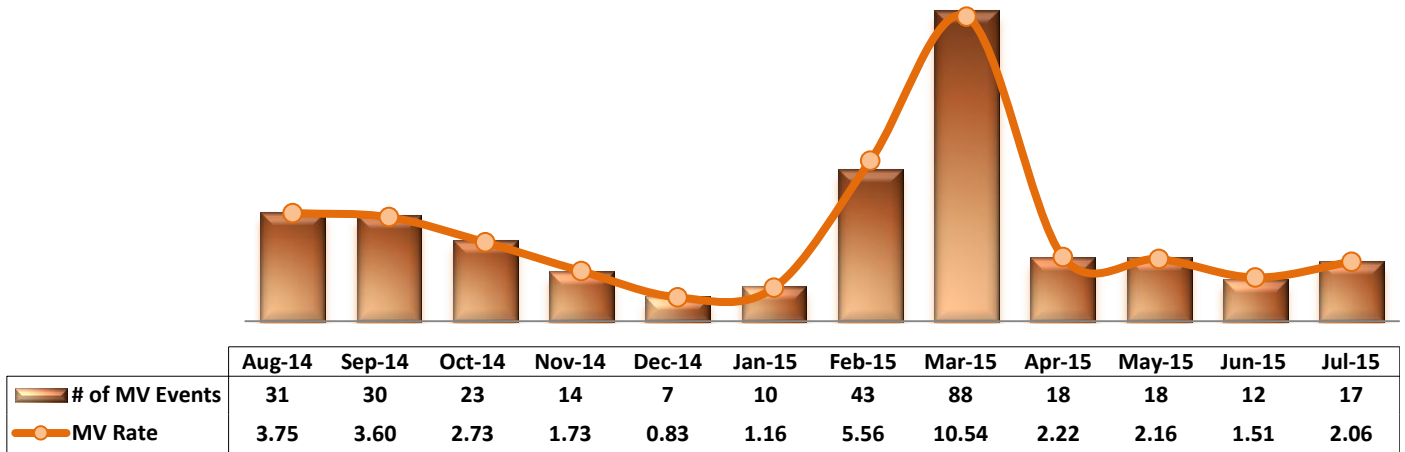


* It counts the total number of unauthorized leaves for any duration that were initiated during month and were recorded in Avatar. The elopement rate is the number of those unauthorized leaves that occurred for every 1000 inpatient days.

Key Trends: Medication Documentation, Medication Variance, ADR, and STAT (17~21)

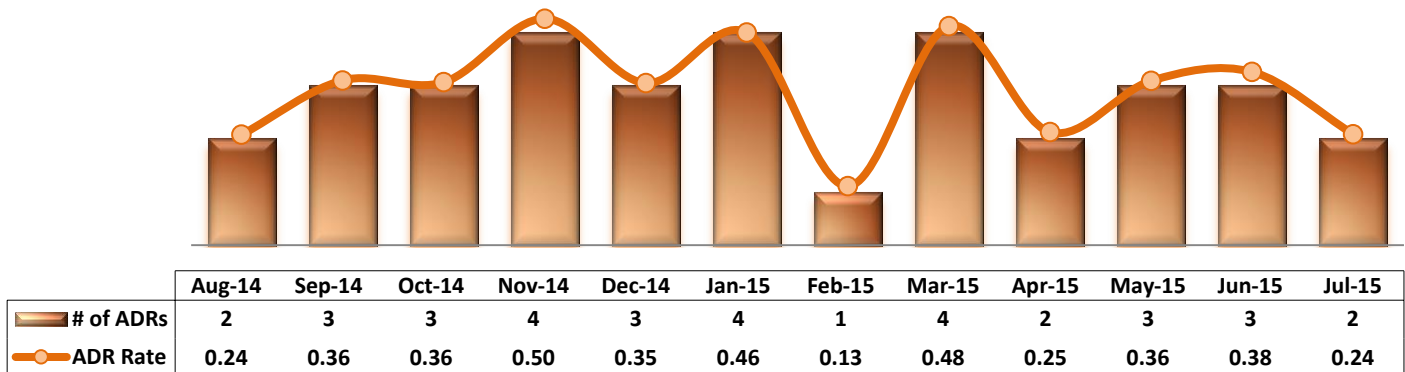
- The number of reported MVs increased to 17 for the month of July 2015.
- The number of reported ADRs ranged between one and four per month between August 2014 and July 2015.
- The rate of missing documentation on medication administration decreased from 0.93% in June 2015 to 0.76% in July.
- The medication refusal rate had fallen below 6% in June 2015 and declined further in July.
- Although the number of incidents involving psychiatric emergencies increased in July, overall the severity level of incidents involving violence decreased and accordingly the number of STAT events also marginally decreased.

17. Reported Medication Variance Events



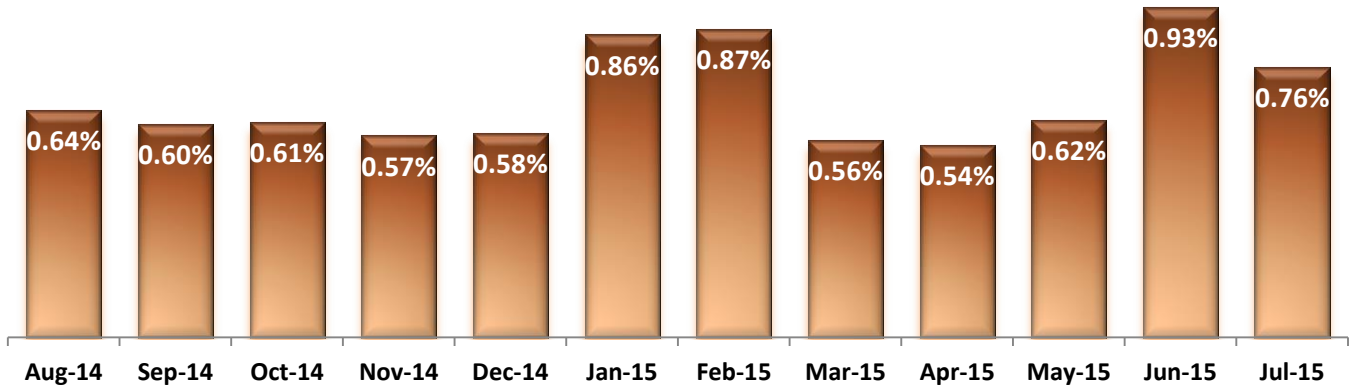
* MV Rate: Number of reported medication variance events that occurred for every 1000 inpatient days.

18. Reported Adverse Drug Reactions

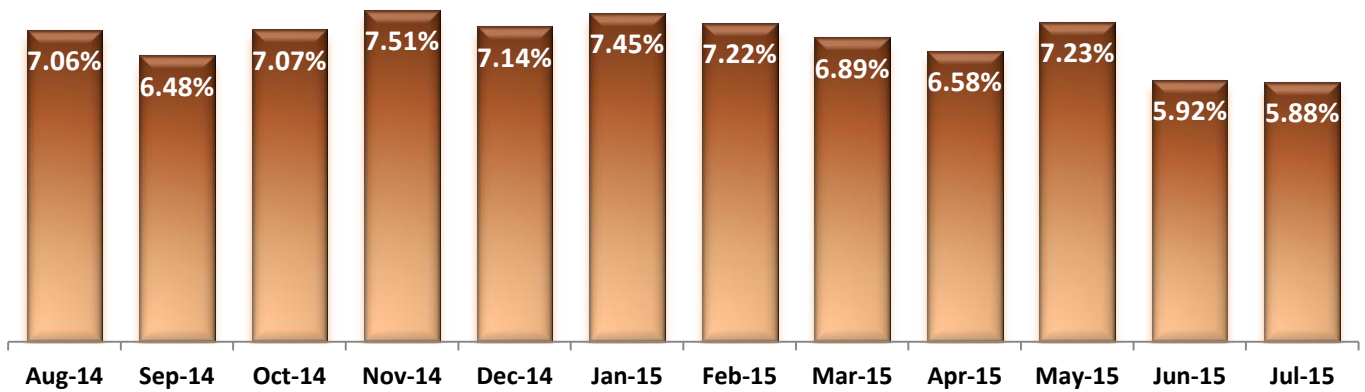


* ADR Rate: Number of reported adverse drug reaction events that occurred for every 1000 inpatient days.

19. Percent of Missing Documentation on Med-Administration

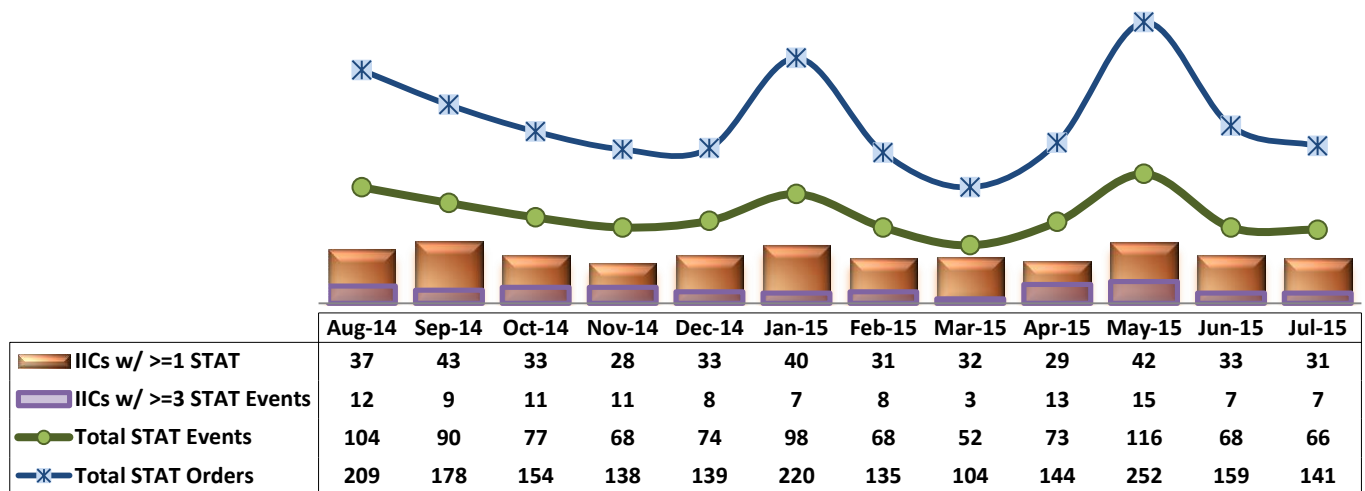


20. Medication Refusal Rate*



* Medication Refusal Rate: the number of refused medication doses divided by the total number of doses scheduled for administration.

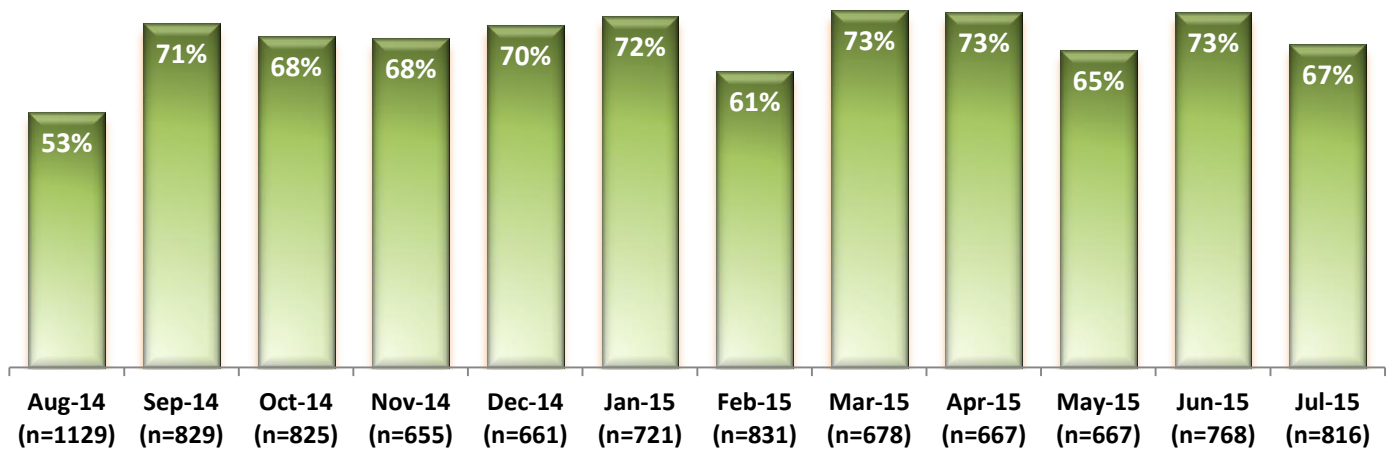
21. Number of STAT Events and Individuals Involved



Key Trends: Environment of Care (22)

- During CY2014, on average, the Hospital received a total of 773 work orders per month (or 25 per day) through SiteFM. Of those, 70% were completed within 3 days.
- In the month of July 2015, the Hospital received a total of 816 SiteFM work orders (26 per day), which is higher than the level of work orders received in the previous four months. This increase may have been affected by the Environment of Care (EOC) survey that was conducted across the Hospital in July. Historically, EOC survey brought more attention to environmental issues that may indirectly affect the patient care, contributed to an increase of SiteFM reporting following EOC survey.
- The 3-day completion rate of SiteFM work orders in July 2015 was 67%, lower than 73% in June. This may also be due in part to the higher volume of work orders.

22. Percentage of SiteFM Work Orders Completed within 3 Days



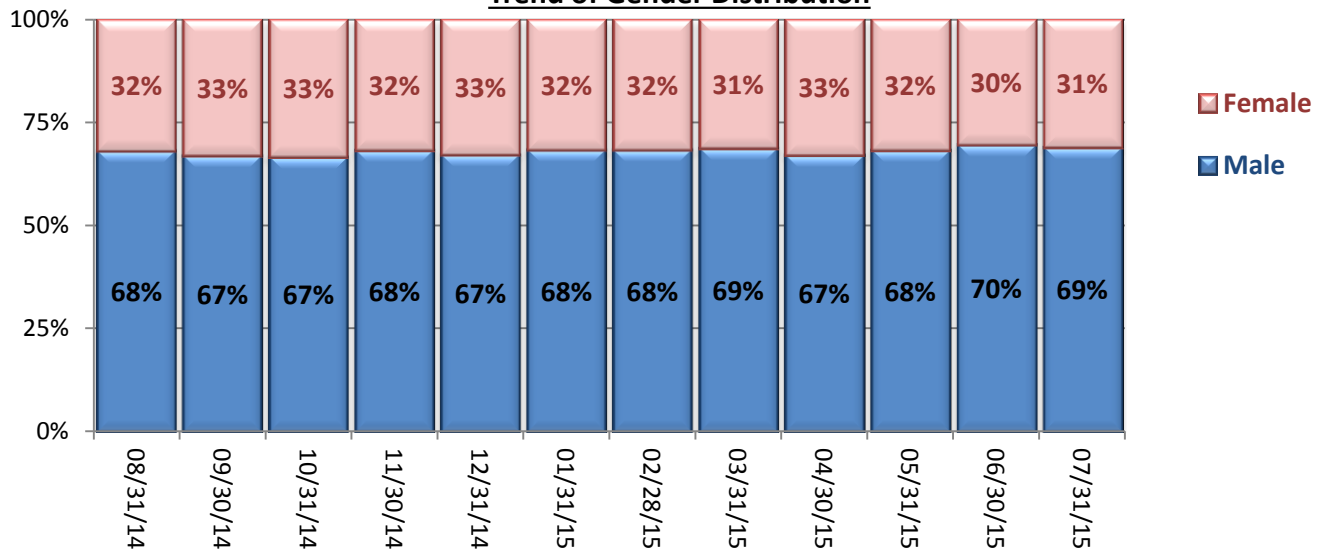
* This data has been analyzed for the first time as of early December 2014.

Key Trends: Demographics, Legal Status, and Length of Stay (23)

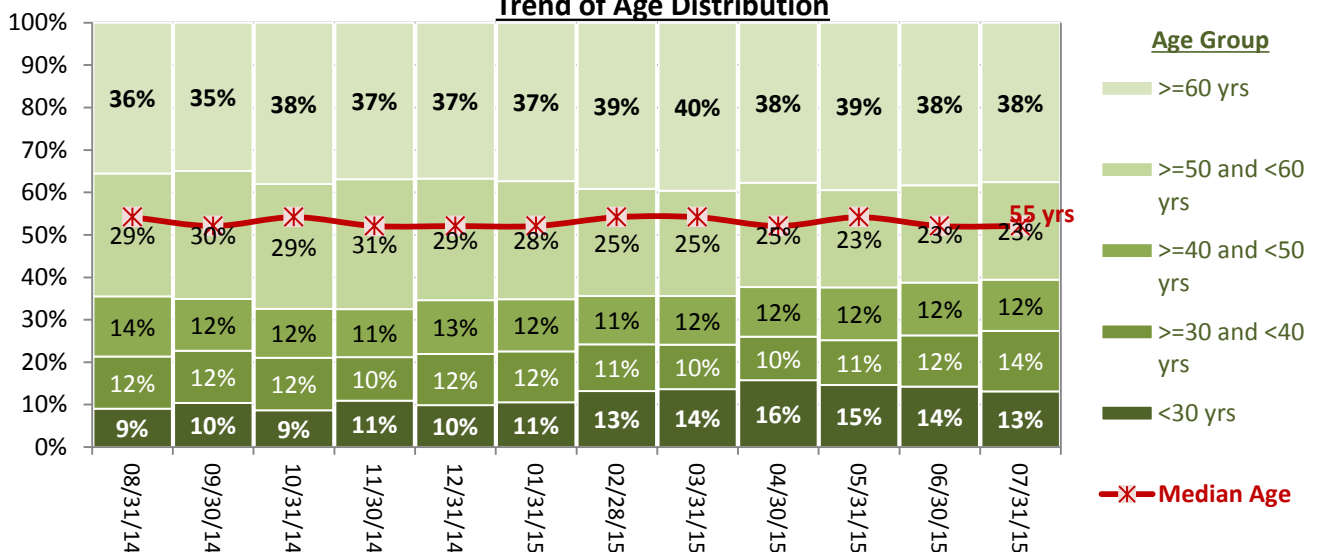
- The proportion of female individuals remaining in the Hospital’s care increased in FY14, from 26% as of October 2013 to 33% in September 2014; since then, the proportion of female individuals has ranged between 30% and 33%.
- While the percent of individuals with 60 years or older ranged from 35% to 40%, the percent of individuals under 30 years old increased since May 2014, when only 6% among IICs were younger than 30 years of age. This age group reached 16% as of April 2015 and decreased slightly in the past three months. However, the percent of those between 30 and 40 years old increased, and overall younger population under the age of 40 continued to show a steady increase. This trend coincides with the significant increase in the number of Pre-trial admissions, which tend to include more of younger population, as well as individuals triggering more of violence related incidents.
- The median length of stay (LOS) for individuals remaining in care had decreased gradually in CY2014, falling to the lowest level (362 days or 12 months) as of December 31, 2014. Since then, the median LOS increased gradually and it is 445 days as of July 31, 2015.

23. Demographics and Length of Stay

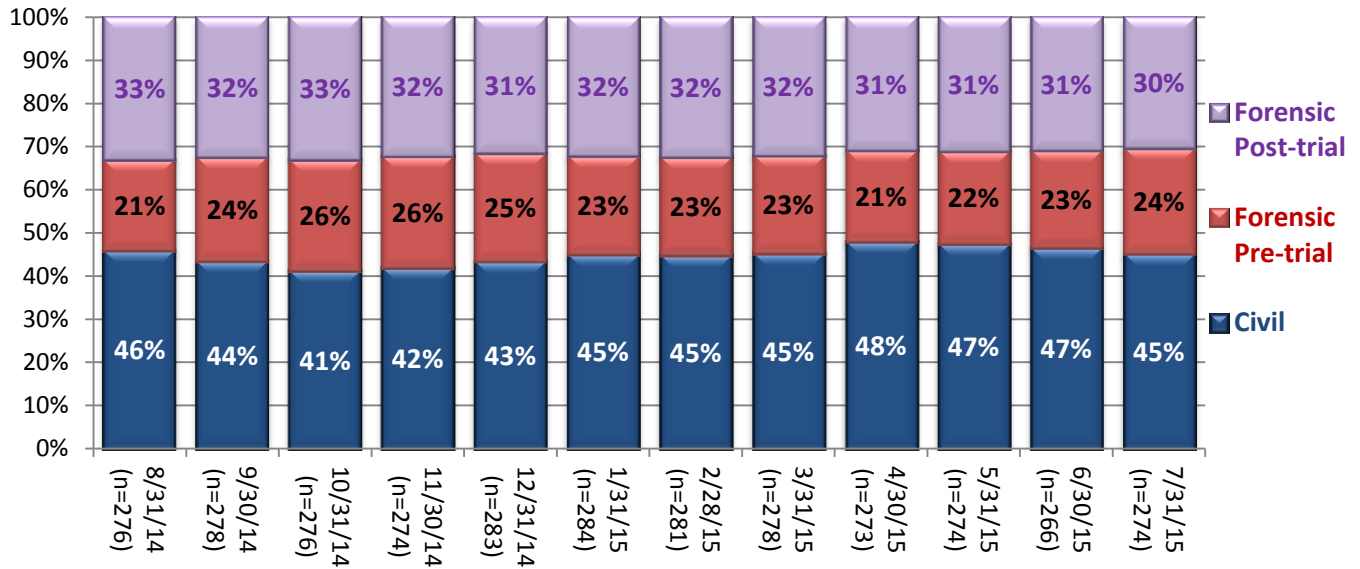
Trend of Gender Distribution



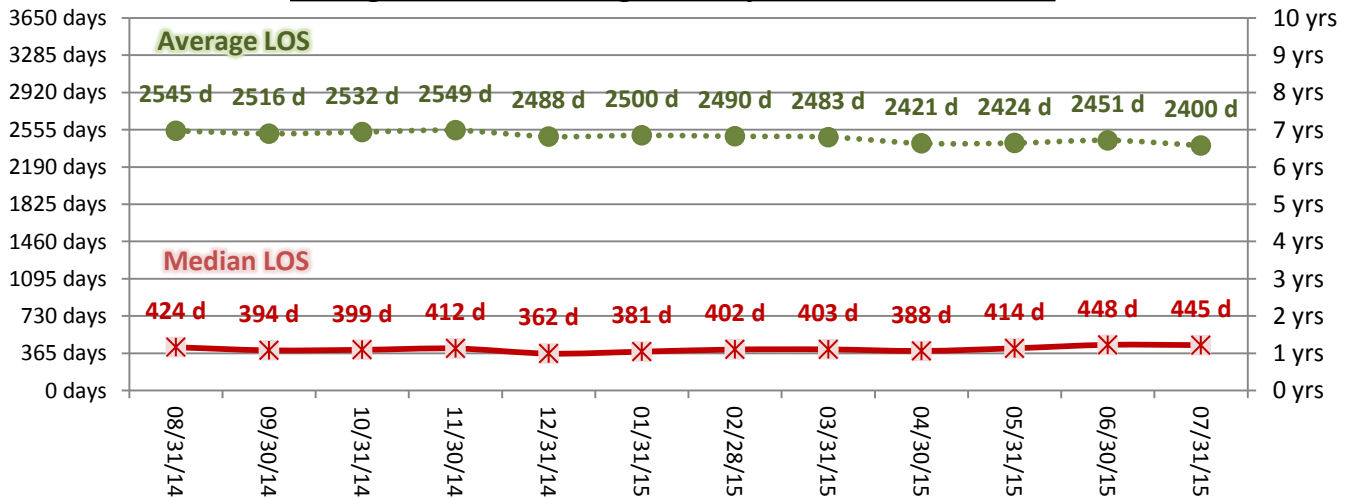
Trend of Age Distribution



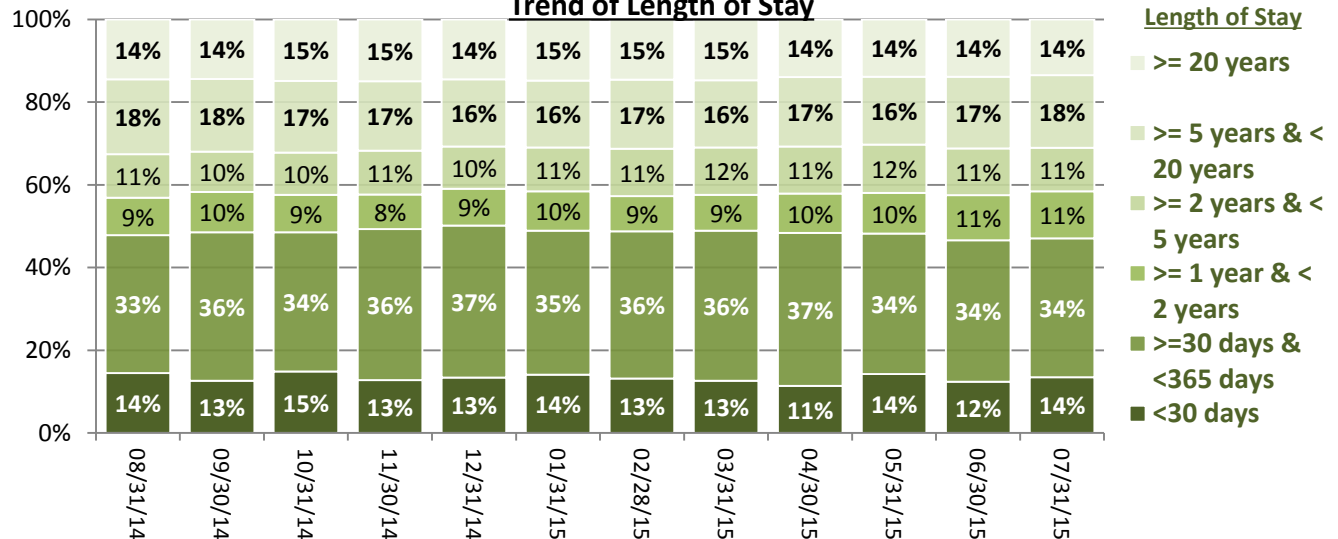
Trend of Legal Status Distribution



Average and Median Length of Stay for Individuals in Care



Trend of Length of Stay



Performance Related Information for Staff & Managers

1. Census, Admissions, Discharges & Transfers

Data Source: Avatar

Updated as of 08/18/15

Category	Aug-14	Sep-14	Oct-14	Nov-14	Dec-14	Jan-15	Feb-15	Mar-15	Apr-15	May-15	Jun-15	Jul-15	Monthly Average	Total (12mths)	Figure	
Admissions	Civil	19	10	15	12	18	18	16	19	20	16	15	15	16	193	Figure 1
	Pre-trial	20	25	26	23	23	22	21	17	12	22	20	25	21	256	
	Post-trial	3	2	4	0	2	2	2	1	1	4	1	1	2	23	
	Total	42	37	45	35	43	42	39	37	33	42	36	41	39	472	
Discharges	Civil	21	17	26	13	13	19	23	18	15	22	25	17	19	229	Figure 2
	Pre-trial	16	15	17	21	20	22	16	19	17	16	15	16	18	210	
	Post-trial	1	3	4	3	1	1	2	3	6	3	4	0	3	31	
	Total	38	35	47	37	34	42	41	40	38	41	44	33	39	470	
Net Increase During Month	Civil	-2	-7	-11	-1	5	-1	-7	1	5	-6	-10	-2		-36	
	Pre-trial	4	10	9	2	3	0	5	-2	-5	6	5	9		46	
	Post-trial	2	-1	0	-3	1	1	0	-2	-5	1	-3	1		-8	
	Total	4	2	-2	-2	9	0	-2	-3	-5	1	-8	8		2	
All Individuals on Roll at End of Month	276	278	276	274	283	284	281	278	273	274	266	274	276			
a. Present on Unit	270	275	272	270	281	275	274	276	270	269	264	271	272			
b. On AL	6	3	4	4	2	9	7	2	3	5	2	3	4			
c. On UL	0	0	0	0	0	0	0	0	0	0	0	0	0			
All Individuals on Roll: Daily Average during Month*	271	283	276	272	277	284	280	274	274	272	270	270	275		Figure 3	
a. Present on Unit	267	278	272	269	273	279	276	269	270	269	264	266	271			
b. On AL	4	5	4	3	4	5	4	5	4	3	6	4	3.8			
c. On UL	0	0	0	0	0	0	0	0	0	0	0	0	0.00			
Patient Days**	8277	8326	8422	8078	8472	8610	7738	8348	8095	8349	7925	8247	8241	98887		
Inter-Unit Transfers during Month	11	22	9	9	13	7	7	11	1	22	14	14	12	140	Figure 4	
Medical Leaves Initiated during Month	16	15	10	10	18	23	11	11	10	18	20	15	15	177		
Emergency Non-Emer	67	68	62	71	61	59	55	71	79	81	96	95	72	865		
Total	83	83	72	81	79	82	66	82	89	99	116	110	87	1042		
Non-Medical Leaves Initiated during Month	386	397	431	390	393	412	323	391	334	251	323	374	367	4405		
UL Initiated during Month	0	0	0	0	0	0	0	0	0	1	1	1	0	3		
Total Unique Patients Served during Month	312	312	318	310	315	326	320	317	306	314	305	305	313			
30 Day Readmission ***	Civil	2	0	5	0	0	3	3	1	2	1	2		2	19	
	Pre-trial	0	1	1	0	1	1	0	1	1	0	0		1	6	
	Post-trial	0	1	0	0	1	0	0	0	2	0	0		0	4	
	Total	2	2	6	0	2	4	3	2	5	1	2		3	29	

* This is the average number of individuals served on a given day for the respective month. Due to rounding from average calculation, numbers from its subcategories a, b, & c may not add up to the total number on this row.

** It counts the number of patients who are present on the unit and excludes those on authorized or unauthorized leave at 11:59pm on a given day.

*** Number of patients returning within 30 days of discharges that occurred during month.

Performance Related Information for Staff & Managers

2. Key Performance Indicators

Data Source: UI DB, MV DB, ADR DB, Restraint/Seclusion Log, and Avatar

Updated as of 08/18/15

Category	Aug-14	Sep-14	Oct-14	Nov-14	Dec-14	Jan-15	Feb-15	Mar-15	Apr-15	May-15	Jun-15	Jul-15	Monthly Average	NPR* (Jun-13)	Figure
30 Day Readmit (Discharge Cohort)**	Civil	9.5%	0.0%	19.2%	0.0%	0.0%	15.8%	13.0%	5.6%	13.3%	4.5%	8.0%		9.1%	Figure 5
	Pre-trial	0.0%	6.7%	5.9%	0.0%	5.0%	4.5%	0.0%	5.3%	5.9%	0.0%	0.0%		3.1%	
	Post-trial	0.0%	33.3%	0.0%	0.0%	100.0%	0.0%	0.0%	0.0%	33.3%	0.0%	0.0%		14.1%	
	Combined	5.3%	5.7%	12.8%	0.0%	5.9%	9.5%	7.3%	5.0%	13.2%	2.4%	4.5%		6.7%	
Number of Unusual Incidents*	249	190	217	208	238	240	198	193	192	275	219	231	221		Figure 6
Patient Unusual Incident Rate	27.8	21.4	24.6	23.5	26.2	25.8	24.6	21.8	22.0	30.8	26.0	26.8	25.1		Figure 7
UI by Severity	Catastrophe	0	0	0	0	0	0	0	0	0	0	0	0		Figure 9
	High	58	30	47	42	39	53	34	34	31	69	27	22	41	
	Medium	102	95	85	90	104	113	102	75	90	109	72	80	93	
	Low	89	65	85	76	95	74	62	84	71	97	120	129	87	
Physical Assault Incident Rate	6.0	5.3	8.0	5.2	7.0	8.4	7.5	6.9	5.8	9.2	6.2	5.7	6.8		
Selected Types of Incidents	Physical Assault	50	44	67	42	59	72	58	58	47	77	49	47	56	Figure 10
	Aggressive Behav.	102	66	65	71	78	73	63	46	59	99	68	84	73	
	Psych Emergency	86	56	67	58	72	89	72	47	62	97	25	39	64	
	Fall	24	25	30	31	35	27	33	27	18	32	28	31	28	
	Injury	40	37	36	39	37	41	32	33	32	43	24	37	36	
Physical Assaults by Severity	High	19	14	21	14	10	28	13	14	9	29	10	5	13	Figure 11
	Medium	9	18	21	17	21	26	30	20	16	23	20	12	19	
	Low	22	12	25	11	28	18	15	24	22	25	19	30	21	
Patient Injury Rate***	0.36	0.48	0.12	0.12	0.00	0.00	0.13	0.12	0.12	0.36	0.13	0.12	0.17	0.38	Figure 12
Patients with Major Injuries***	3	4	1	1	0	0	1	1	1	3	1	1	1		
Total Patients Injured***	24	28	27	27	24	31	22	23	19	29	17	27	25		
Total Staff Injured***	30	13	14	23	23	17	11	13	13	32	14	8	18		Figure 13
Elopement Rate	0.00	0.00	0.00	0.00	0.00	0.00	0.00	0.00	0.00	0.12	0.13	0.12	0.03	0.13	Figure 16
Medication Variance Rate	3.75	3.60	2.73	1.73	0.83	1.16	5.56	10.54	2.22	2.16	1.51	2.06	3.15		Figure 17
Adverse Drug Reaction Rate	0.24	0.36	0.36	0.50	0.35	0.46	0.13	0.48	0.25	0.36	0.38	0.24	0.34		Figure 18
Missing Med-Admin Documentation	0.64%	0.60%	0.61%	0.57%	0.58%	0.86%	0.87%	0.56%	0.54%	0.62%	0.93%	0.76%	0.68%		Figure 19
Percent of Medication Refusal	7.06%	6.48%	7.07%	7.51%	7.14%	7.45%	7.22%	6.89%	6.58%	7.23%	5.92%	5.88%	6.88%		Figure 20
Percent of Patients Restrained	1.0%	0.6%	0.3%	1.0%	1.3%	0.6%	1.3%	0.3%	7.5%	10.2%	8.2%	6.9%	1.0%	5.8%	Figure 14
Percent of Patients Secluded	3.5%	4.2%	2.8%	3.5%	2.5%	3.1%	3.8%	2.8%	2.9%	3.5%	3.3%	2.0%	3.2%	2.4%	
Restraint Hours Rate	0.114	0.030	0.010	0.021	0.105	0.072	0.015	0.004	0.031	0.098	0.074	0.163	0.060	0.71	Figure 15
Seclusion Hours Rate	0.079	0.052	0.040	0.086	0.041	0.045	0.088	0.101	0.043	0.060	0.150	0.067	0.070	0.44	
SiteFM Work Orders Completed within 3 days	53%	71%	68%	68%	70%	72%	61%	73%	73%	65%	73%	67%	67%		Figure 22
Total SiteFM Work Orders	593	587	562	444	466	521	506	498	487	436	561	543	517		
	1129	829	825	655	661	721	831	678	667	667	768	816	771		

* National Public Rate, NASMHPD Research Institute, National Research Institute (NRI), Data as of June 2013, Published in November 2013.

** Percentage of patients returning within 30 days of discharges that occurred during month

*** Refer to the next page [UI & Medication]

Performance Related Information for Staff & Managers

3. Unusual Incident & Medication

Data Source: UI DB, MV DB, ADR DB, and Avatar

Updated as of 08/18/15

Category	Aug-14	Sep-14	Oct-14	Nov-14	Dec-14	Jan-15	Feb-15	Mar-15	Apr-15	May-15	Jun-15	Jul-15	Monthly Average	Total (12mths)	NPR* (Jun-13)	
Unusual Incidents (excluding MV)**	Total UIs	249	190	217	208	238	240	198	193	192	275	219	231	221	2650	
	Major UIs Only	190	148	171	168	188	188	156	144	150	226	131	126	166	1986	
	Pt Involved UI Only	230	178	207	190	222	222	190	182	178	257	206	221	207	2483	
	Patient UI Rate	27.8	21.4	24.6	23.5	26.2	25.8	24.6	21.8	22.0	30.8	26.0	26.8	25.1		
Unique Pts Involved in UI	116	107	143	122	122	139	115	115	107	138	98	131	121	1453		
Selected Types of Incidents	Physical Assault	50	44	67	42	59	72	58	58	47	77	49	47	56	670	
	Aggressive Behavior	102	66	65	71	78	73	63	46	59	99	68	84	73	874	
	Psych Emergency	86	56	67	58	72	89	72	47	62	97	25	39	64	770	
	Fall	24	25	30	31	35	27	33	27	18	32	28	31	28	341	
	Injury	40	37	36	39	37	41	32	33	32	43	24	37	36	431	
Physical Assault Rate	6.0	5.3	8.0	5.2	7.0	8.4	7.5	6.9	5.8	9.2	6.2	5.7	6.8			
UI by Severity	Catastrophe	0	0	0	0	0	0	0	0	0	0	0	0	0	0	
	High	58	30	47	42	39	53	34	34	31	69	27	22	41	486	
	Medium	102	95	85	90	104	113	102	75	90	109	72	80	93	1117	
	Low	89	65	85	76	95	74	62	84	71	97	120	129	87	1047	
Physical Assaults by Severity	High	19	14	21	14	10	28	13	14	9	29	10	5	13	186	
	Medium	9	18	21	17	21	26	30	20	16	23	20	12	19	233	
	Low	22	12	25	11	28	18	15	24	22	25	19	30	21	251	
Total Patients Injured***	24	28	27	27	24	31	22	23	19	29	17	27	25	298		
Patients with Major Injuries***	3	4	1	1	0	0	1	1	1	3	1	1	1	17		
Patient Injury Rate***	0.36	0.48	0.12	0.12	0.00	0.00	0.13	0.12	0.12	0.36	0.13	0.12	0.17		0.38	
Total Staff Injured**	30	13	14	23	23	17	11	13	13	32	14	8	18			
Total UIs Documented in Avatar	0	0	0	0	0	0	0	0	0	1	1	1	0	3		
Elopement Rate	0.00	0.00	0.00	0.00	0.00	0.00	0.00	0.00	0.00	0.12	0.13	0.12	0.03		0.13	
Med Variance (MV) Reports**	31	30	23	14	7	10	43	88	18	18	12	17	26	311		
MV Rate	3.75	3.60	2.73	1.73	0.83	1.16	5.56	10.54	2.22	2.16	1.51	2.06	3.15			
Adverse Drug Reactions Reports	2	3	3	4	3	4	1	4	2	3	3	2	3	34		
ADR Rate	0.24	0.36	0.36	0.50	0.35	0.46	0.13	0.48	0.25	0.36	0.38	0.24	0.34			
Total Med Administrations Scheduled	105835	103590	105994	104198	107578	109625	96178	103742	99674	101673	98847	101726		1238660		
Total Missing Documentations	680	626	647	595	622	939	838	579	543	626	923	777		8395		
Percent of Missing Documentation	0.64%	0.60%	0.61%	0.57%	0.58%	0.86%	0.87%	0.56%	0.54%	0.62%	0.93%	0.76%		0.68%		
Total Medication Doses Refused	7472	6712	7493	7823	7676	8164	6940	7145	6562	7352	5856	5977		85172		
Percent of Medication Refusal	7.06%	6.48%	7.07%	7.51%	7.14%	7.45%	7.22%	6.89%	6.58%	7.23%	5.92%	5.88%		6.88%		
Total STAT Orders	209	178	154	138	139	220	135	104	144	252	159	141	164		Figure 21	
Total STAT Events****	104	90	77	68	74	98	68	52	73	116	68	66	80			
Total Individuals Involved >=1 STAT	37	43	33	28	33	40	31	32	29	42	33	31	34			
Total Patients with >=3 STAT Events	12	9	11	11	8	7	8	3	13	15	7	7	9			

* National Public Rate, NASMHPD Research Institute, National Research Institute (NRI), Data as of June 2013, Published in November 2013.

** Numbers may change if any additional UI report is made after the data run date from UI database (around the 15th of the following month); According to the revised UI policy as of November 4, 2013, a medication variance (MV) incident became no longer considered to be an unusual incident, and a medication or vital sign refusal incident is not longer an UI as of May 2014. UI data for the past 12 months in this report has been updated to reflect this change and reanalyzed in order to show the UI trend in consistent logic.

*** Injury is broadly defined to include any type of injuries regardless of the cause or severity level. The total number of patients injured represents all of the reported injuries including minor injuries treated with first aid alone. However, the patient injury rate considers only the number of patient injuries that required beyond first-aid level treatment based on the NRI definition and the patient injury rate is the number of 'major' patient injuries per every 1000 inpatient days

**** One STAT event may involve more than one STAT order for the same patient. Any orders placed within 20 minute timeframe are considered to belong to one STAT event.

Performance Related Information for Staff & Managers

4. Restraint & Seclusion

Data Source: Restraint/Seclusion Log and UI DB (for # of total events and patients) and Avatar (for patient days/hours)

Updated as of 08/18/15

Category		Aug-14	Sep-14	Oct-14	Nov-14	Dec-14	Jan-15	Feb-15	Mar-15	Apr-15	May-15	Jun-15	Jul-15	Monthly Average	Total (12mths)	NPR* (Jun-13)
Number of Restraint Events	Mechanical	8	6	1	4	9	9	4	1	6	16	5	15	7.0	84	
	Physical Hold									42	61	35	26	41.0		
	Total									48	77	40	41	51.5		
Number of Unique Patients Restrained	Mechanical	3	2	1	3	4	2	4	1	3	7	5	4	3.3		
	Physical Hold									20	25	20	17	20.5		
	Total									23	32	25	21	25.3		
Percentage of Patients Restrained**	Mechanical	1.0%	0.6%	0.3%	1.0%	1.3%	0.6%	1.3%	0.3%	1.0%	2.2%	1.6%	1.3%	1.0%		
	Physical Hold									6.5%	8.0%	6.6%	5.6%	6.7%		
	Total									7.5%	10.2%	8.2%	6.9%	8.2%		5.8%
Total Restraint Hours (h:mm)**	Mechanical	22:35	6:00	2:00	4:06	21:26	14:56	2:46	0:50	5:19	18:37	13:22	31:37	11:57	143:34	
	Physical Hold									0:42	1:01	0:47	0:37	0:46		
	Total									6:01	19:38	14:09	32:14	18:00		
Restraint Hours Rate**	Mechanical	0.114	0.030	0.010	0.021	0.105	0.072	0.015	0.004	0.027	0.093	0.070	0.160	0.060		
	Physical Hold									0.004	0.005	0.004	0.003	0.004		
	Total									0.031	0.098	0.074	0.163	0.091		0.71
Number of Seclusion Events		20	17	12	19	12	15	20	15	15	20	21	14	16.7	200	
Number of Unique Patients Secluded		11	13	9	11	8	10	12	9	9	11	10	6	9.9		
Percentage of Patients Secluded		3.5%	4.2%	2.8%	3.5%	2.5%	3.1%	3.8%	2.8%	2.9%	3.5%	3.3%	2.0%	3.2%		2.4%
Total Seclusion Hours (h:mm)		15:41	10:22	8:01	16:36	8:18	9:24	16:21	20:15	8:24	12:02	28:28	13:18	13:55	167:10	
Seclusion Hours Rate		0.079	0.052	0.040	0.086	0.041	0.045	0.088	0.101	0.043	0.060	0.150	0.067	0.070		0.44

* National Public Rate, NASMHPD Research Institute, National Research Institute (NRI), Data as of June 2013, Published in November 2013.

** Restraint data prior to April 2015 includes only mechanical restraints. The Hospital's restraint policy has been revised to consider a physical hold a restraint and data as of April 2015 reflects this change. The duration of each physical hold event is counted as one (1) minute as a physical hold is ordered/used only as a temporary intervention that lasts less than a minute to break up any physical altercations or to administer emergency medications.

Performance Related Information for Staff & Managers

6. Major Unusual Incidents by Incident Location/Unit

Data Source: UI DB

Updated as of 08/18/15

Category		Aug-14	Sep-14	Oct-14	Nov-14	Dec-14	Jan-15	Feb-15	Mar-15	Apr-15	May-15	Jun-15	Jul-15	Monthly Average	Total (12mths)	Percent
Total Unusual Incidents		249	190	217	208	238	240	198	193	192	275	219	231	221	2650	100%
Incident Location	1A	15	4	11	12	9	5	5	11	13	16	18	8	11	127	5%
	1B	19	10	18	14	12	12	10	12	18	9	7	16	13	157	6%
	1C	12	18	32	14	24	28	25	7	7	33	22	8	19	230	9%
	1D	29	20	7	18	40	37	15	23	26	29	18	37	25	299	11%
	1E	22	21	25	15	26	15	12	12	24	37	13	26	21	248	9%
	1F	32	28	25	23	34	43	28	28	20	46	28	18	29	353	13%
	1G	28	20	13	7	7	11	12	7	15	12	15	21	14	168	6%
	2A	10	7	4	12	7	16	3	6	5	7	5	14	8	96	4%
	2B	4	8	5	15	2	2	3	3	4	5	3	5	5	59	2%
	2C	20	9	17	10	16	14	24	10	2	9	19	24	15	174	7%
	2D	18	17	18	26	22	19	19	33	24	22	24	23	22	265	10%
	TLC	20	15	26	26	23	21	31	27	16	25	32	14	23	276	10%
	Other	20	13	16	16	16	17	11	14	18	25	15	17	17	198	7%
	Physical Assault		50	44	67	42	59	72	58	58	47	77	49	47	56	670
Incident Location	1A	2	1	0	0	0	1	2	4	2	3	4	3	2	22	3%
	1B	0	2	4	2	3	0	1	0	1	0	0	0	1	13	2%
	1C	0	3	9	0	8	6	6	2	1	15	4	2	5	56	8%
	1D	14	11	4	3	5	10	4	7	7	6	3	9	7	83	12%
	1E	1	4	12	4	3	5	4	8	5	6	5	5	5	62	9%
	1F	3	5	8	9	19	15	13	10	8	20	13	8	11	131	20%
	1G	8	9	4	0	2	4	5	1	4	1	7	5	4	50	7%
	2A	0	0	1	1	2	5	1	0	1	0	0	1	1	12	2%
	2B	0	0	0	1	0	0	0	0	0	0	0	0	0	1	0%
	2C	3	2	4	6	5	7	10	4	0	3	3	6	4	53	8%
	2D	11	4	11	8	6	7	4	12	12	8	4	6	8	93	14%
	TLC - Intensive	3	0	7	5	4	8	6	9	2	7	5	2	5	58	9%
	TLC - Transitional	4	3	0	3	1	3	1	1	3	2	0	0	2	21	3%
	Other	1	0	3	0	1	1	1	1	0	1	6	1	0	15	2%

Performance Related Information for Staff & Managers

6. Major Unusual Incidents by Incident Location/Unit

Data Source: UI DB

Updated as of 08/18/15

Category		Aug-14	Sep-14	Oct-14	Nov-14	Dec-14	Jan-15	Feb-15	Mar-15	Apr-15	May-15	Jun-15	Jul-15	Monthly Average	Total (12mths)	Percent
Aggressive Behavior		102	66	65	71	78	73	63	46	59	99	68	84	73	874	130%
Incident Location	1A	5	1	2	1	3	0	0	0	1	0	2	1	1	16	2%
	1B	7	4	5	2	1	0	0	1	3	0	0	2	2	25	4%
	1C	6	7	10	3	7	10	12	2	2	9	9	3	7	80	12%
	1D	12	7	1	7	23	21	8	7	14	15	11	14	12	140	21%
	1E	15	11	8	7	13	7	5	1	12	21	4	11	10	115	17%
	1F	18	10	14	11	12	15	10	7	7	24	12	5	12	145	22%
	1G	14	8	0	2	0	0	2	1	6	8	4	11	5	56	8%
	2A	7	3	1	2	1	6	2	2	1	3	2	11	3	41	6%
	2B	1	4	2	11	0	0	0	0	0	0	0	1	2	19	3%
	2C	6	3	5	2	4	1	5	3	0	2	8	6	4	45	7%
	2D	1	2	5	11	8	5	7	11	6	7	5	12	7	80	12%
	TLC - Intensive	3	3	3	4	3	4	8	6	4	4	6	1	4	49	7%
	TLC - Transitional	4	1	4	5	1	3	2	2	3	5	4	4	3	38	6%
	Other	3	2	5	3	2	1	2	3	0	1	1	2	2	25	4%
	Psych Emergency		86	56	67	58	72	89	72	47	62	97	25	39	64	770
Incident Location	1A	1	0	1	0	3	1	1	0	1	0	0	1	1	9	1%
	1B	3	1	7	2	1	0	0	0	3	1	0	2	2	20	3%
	1C	3	2	12	0	4	8	7	4	1	19	2	4	6	66	10%
	1D	18	9	3	9	14	16	11	9	14	16	5	9	11	133	20%
	1E	16	16	14	10	15	11	7	5	17	20	5	7	12	143	21%
	1F	13	10	15	16	19	22	15	15	10	26	9	3	14	173	26%
	1G	16	12	3	0	0	1	2	1	4	2	1	5	4	47	7%
	2A	0	0	0	0	1	4	1	0	2	3	1	4	1	16	2%
	2B	1	0	0	5	0	0	0	0	0	0	0	0	1	6	1%
	2C	7	0	4	0	1	4	7	1	0	0	0	0	2	24	4%
	2D	5	3	5	11	13	14	9	3	7	3	2	1	6	76	11%
	TLC - Intensive	2	0	2	2	1	5	10	6	1	1	0	2	3	32	5%
	TLC - Transitional	1	2	0	2	0	3	0	1	2	4	0	1	1	16	2%
	Other	0	1	1	1	0	0	2	2	0	2	0	0	1	9	1%

Performance Related Information for Staff & Managers

6. Major Unusual Incidents by Incident Location/Unit

Data Source: UI DB

Updated as of 08/18/15

Category		Aug-14	Sep-14	Oct-14	Nov-14	Dec-14	Jan-15	Feb-15	Mar-15	Apr-15	May-15	Jun-15	Jul-15	Monthly Average	Total (12mths)	Percent	
Fall		24	25	30	31	35	27	33	27	18	32	28	31	28	341	100%	
Incident Location	1A	4	2	4	9	3	3	2	5	0	8	8	3	4	51	15%	
	1B	6	4	4	5	4	3	6	3	2	2	5	9	4	53	16%	
	1C	1	0	5	2	8	2	0	3	1	2	0	0	2	24	7%	
	1D	2	3	2	2	1	1	0	2	4	1	0	1	2	19	6%	
	1E	1	1	2	2	1	0	2	0	0	1	2	2	1	14	4%	
	1F	1	2	1	2	2	7	4	3	1	2	1	6	3	32	9%	
	1G	2	1	2	1	1	2	4	1	1	2	4	1	2	22	6%	
	2A	0	1	0	0	2	0	0	1	1	2	0	2	1	9	3%	
	2B	1	2	2	1	0	0	1	1	2	2	2	1	1	14	4%	
	2C	1	0	1	0	5	3	5	0	0	0	0	1	1	17	5%	
	2D	1	5	2	1	1	1	3	3	2	3	3	3	2	26	8%	
	TLC - Intensive	0	1	1	1	1	2	1	1	1	1	4	1	1	1	15	4%
	TLC - Transitional	2	1	1	3	3	0	1	0	0	0	0	0	1	1	12	4%
	Other	2	2	3	2	3	3	4	4	4	3	3	2	2	3	33	10%
Physical Injury		40	37	36	39	37	41	32	33	32	43	24	37	36	431	100%	
Incident Location	1A	2	1	0	1	0	2	2	2	2	3	1	2	2	18	4%	
	1B	2	1	2	3	1	0	1	3	5	2	0	0	2	20	5%	
	1C	2	1	6	0	3	5	4	3	0	8	2	2	3	36	8%	
	1D	6	8	3	3	7	4	1	7	5	6	3	6	5	59	14%	
	1E	4	2	7	4	1	0	2	1	2	4	3	2	3	32	7%	
	1F	4	12	5	8	8	5	8	7	3	6	6	5	6	77	18%	
	1G	6	0	3	1	2	3	1	0	1	0	1	2	2	20	5%	
	2A	0	1	0	0	2	2	0	1	0	2	0	0	2	1	10	2%
	2B	0	1	0	0	0	0	0	0	0	1	1	1	1	0	5	1%
	2C	4	2	2	2	4	6	6	1	0	1	2	3	3	33	8%	
	2D	1	4	2	7	5	5	1	1	4	3	3	3	3	39	9%	
	TLC - Intensive	2	0	4	3	1	7	1	5	2	4	1	5	3	35	8%	
	TLC - Transitional	2	2	0	3	2	1	2	0	0	0	2	0	0	1	14	3%
	Other	5	2	2	2	1	3	2	3	5	3	3	1	4	3	33	8%

* Not every incident is a major incident. This counts only those incidents that were classified to be major based on the policy.

Performance Related Information for Staff & Managers

5. Demographic Information of Individuals in Care

Data Source: Avatar

Updated as of 08/18/15

Category	Sub-group	Aug-14	Sep-14	Oct-14	Nov-14	Dec-14	Jan-15	Feb-15	Mar-15	Apr-15	May-15	Jun-15	Jul-15	Monthly Average	Percent*
Total Active (on Roll) at End of Month*		276	278	276	274	283	284	281	278	273	274	266	274	276	
Gender	Female	88	92	92	87	93	90	89	87	90	87	81	85	88	32.0%
	Male	188	186	184	187	190	194	192	191	183	187	185	189	188	68.0%
Age	Median Age (Years)	56 yrs	55 yrs	56 yrs	55 yrs	55 yrs	55 yrs	56 yrs	56 yrs	55 yrs	56 yrs	55 yrs	55 yrs	55 yrs	
	<30 years old	25	29	24	30	28	30	37	38	43	40	38	36	33	12.0%
	>=30 and <40 years old	34	34	34	28	34	34	31	29	28	29	32	39	32	11.6%
	>=40 and <50 years old	39	34	32	31	36	35	32	32	32	34	33	33	34	12.1%
	>=50 and <60 years old	80	84	81	84	81	79	71	69	67	63	61	63	74	26.6%
	>=60 years old	98	97	105	101	104	106	110	110	103	108	102	103	104	37.6%
Legal Status of Individuals on Roll at End of Month	Emergency	25	27	22	21	29	27	27	38	45	38	32	32	30	10.9%
	Inpatient Commitment	39	34	35	35	35	36	36	33	35	34	34	33	35	12.6%
	Outpatient Commitment	23	23	22	27	27	27	28	17	16	21	22	22	23	8.3%
	Voluntary	40	37	35	32	32	37	34	38	35	37	36	37	36	13.0%
	Non-Protesting	0	0	0	0	0	1	1	0	0	0	0	0	0	0.1%
	Civil Sub-total	127	121	114	115	123	128	126	126	131	130	124	124	124	44.9%
	DC Exam	30	31	40	35	43	40	41	38	38	39	30	35	37	13.3%
	Mentally Incompetent	28	36	31	36	28	25	23	25	20	20	30	32	28	10.1%
	Forensic Pre-trial Sub-total	58	67	71	71	71	65	64	63	58	59	60	67	65	23.3%
	NGBRI - DC	75	74	76	74	75	76	76	74	70	72	69	70	73	26.6%
	NGBRI - US	11	11	10	10	10	10	10	10	9	9	9	9	10	3.6%
NGBRI - VI	1	1	1	1	1	1	1	1	1	1	1	1	1	0.4%	
Dual Commitment	2	2	2	1	1	1	1	1	1	0	0	0	1	0.4%	
Sexual Psychopath (Miller Act)	2	2	2	2	2	3	3	3	3	3	3	3	3	0.9%	
Forensic Post-trial Sub-total	91	90	91	88	89	91	91	89	84	85	82	83	88	31.8%	
Length of Stay	Median LOS (Days)	424 d	394 d	399 d	412 d	362 d	381 d	402 d	403 d	388 d	414 d	448 d	445 d	406 d	
	Average LOS (Days)	2545 d	2516 d	2532 d	2549 d	2488 d	2500 d	2490 d	2483 d	2421 d	2424 d	2451 d	2400 d	2483 d	
	<30 Days	40	35	41	35	38	40	37	35	31	39	33	37	37	13.3%
	>=30 ~ <365 Days	92	100	93	100	104	99	100	101	101	93	91	92	97	35.2%
	>= 1 Year & < 2 Years	25	27	25	23	25	27	24	24	26	27	29	31	26	9.4%
	>= 2 Years & < 5 Years	29	27	28	29	29	30	32	32	31	32	30	29	30	10.8%
	>= 5 Years & < 20 Years	50	49	48	46	46	46	47	45	46	45	46	48	47	16.9%
>= 20 Years	40	40	41	41	41	42	41	41	38	38	37	37	40	14.4%	

* Counts the total number of individuals who are on the hospital roll at end of each month. This number serves as denominator to calculate percentage of each group.

Performance Related Information for Staff & Managers

6. Demographic Information of Individuals in Care

Data Source: Avatar

Updated as of 08/18/15

Category	Sub-group	Aug-14	Sep-14	Oct-14	Nov-14	Dec-14	Jan-15	Feb-15	Mar-15	Apr-15	May-15	Jun-15	Jul-15	Monthly Average	Percent*
Total Active (on Roll) at End of Month*		276	278	276	274	283	284	281	278	273	274	266	274	276	
Gender	Female	32%	33%	33%	32%	33%	32%	32%	31%	33%	32%	30%	31%	32%	
	Male	68%	67%	67%	68%	67%	68%	68%	69%	67%	68%	70%	69%	68%	
Age	Median Age (Years)	56 yrs	55 yrs	56 yrs	55 yrs	55 yrs	55 yrs	56 yrs	56 yrs	55 yrs	56 yrs	55 yrs	55 yrs	55 yrs	
	<30 yrs	9%	10%	9%	11%	10%	11%	13%	14%	16%	15%	14%	13%	12%	
	>=30 and <40 yrs	12%	12%	12%	10%	12%	12%	11%	10%	10%	11%	12%	14%	12%	
	>=40 and <50 yrs	14%	12%	12%	11%	13%	12%	11%	12%	12%	12%	12%	12%	12%	
	>=50 and <60 yrs	29%	30%	29%	31%	29%	28%	25%	25%	25%	23%	23%	23%	27%	
	>=60 yrs	36%	35%	38%	37%	37%	37%	39%	40%	38%	39%	38%	38%	38%	
Legal Status of Individuals on Roll at End of Month	Emergency	9%	10%	8%	8%	10%	10%	10%	14%	16%	14%	12%	12%	11%	
	Inpatient Commitment	14%	12%	13%	13%	12%	13%	13%	12%	13%	12%	13%	12%	13%	
	Outpatient Commitment	8%	8%	8%	10%	10%	10%	10%	6%	6%	8%	8%	8%	8%	
	Voluntary	14%	13%	13%	12%	11%	13%	12%	14%	13%	14%	14%	14%	13%	
	Non-Protesting	0%	0%	0%	0%	0%	0%	0%	0%	0%	0%	0%	0.0%	0%	
	Civil Sub-total	46%	44%	41%	42%	43%	45%	45%	45%	48%	47%	47%	45%	45%	
	DC Exam	11%	11%	14%	13%	15%	14%	15%	14%	14%	14%	11%	13%	13%	
	Mentally Incompetent	10%	13%	11%	13%	10%	9%	8%	9%	7%	7%	11%	12%	10%	
	Forensic Pre-trial Sub-total	21%	24%	26%	26%	25%	23%	23%	23%	21%	22%	23%	24%	23%	
	NGBRI - DC	27%	27%	28%	27%	27%	27%	27%	27%	26%	26%	26%	26%	27%	
	NGBRI - US	4%	4%	4%	4%	4%	4%	4%	4%	3%	3%	3%	3%	4%	
	NGBRI - VI	0%	0%	0%	0%	0%	0%	0%	0%	0%	0%	0%	0%	0%	
	Dual Commitment	1%	1%	1%	0%	0%	0%	0%	0%	0%	0%	0%	0%	0%	
Sexual Psychopath (Miller Ac	1%	1%	1%	1%	1%	1%	1%	1%	1%	1%	1%	1%	1%		
Forensic Post-trial Sub-total	33%	32%	33%	32%	31%	32%	32%	32%	32%	31%	31%	31%	30%	32%	
Length of Stay	Median LOS (Days)	424 d	394 d	399 d	412 d	362 d	381 d	402 d	403 d	388 d	414 d	448 d	445 d	406 d	
	Average LOS (Days)	2545 d	2516 d	2532 d	2549 d	2488 d	2500 d	2490 d	2483 d	2421 d	2424 d	2451 d	2400 d	2483 d	
	<30 days	14%	13%	15%	13%	13%	14%	13%	13%	11%	14%	12%	14%	13%	
	>=30 days & <365 days	33%	36%	34%	36%	37%	35%	36%	36%	37%	34%	34%	34%	35%	
	>= 1 year & < 2 years	9%	10%	9%	8%	9%	10%	9%	9%	10%	10%	11%	11%	9%	
	>= 2 years & < 5 years	11%	10%	10%	11%	10%	11%	11%	12%	11%	12%	11%	11%	11%	
	>= 5 years & < 20 years	18%	18%	17%	17%	16%	16%	17%	16%	17%	16%	17%	18%	17%	
>= 20 years	14%	14%	15%	15%	14%	15%	15%	15%	14%	14%	14%	14%	14%		

* Counts the total number of individuals who are on the hospital roll at end of each month. This number serves as denominator to calculate percentage of each group.