



Government of the District of Columbia
Department of Behavioral Health (DBH)



PRISM

Performance Related Information for Staff and Managers



JUNE 2015

Office of Statistics and Reporting (OSR), 07/16/15

Table of Contents

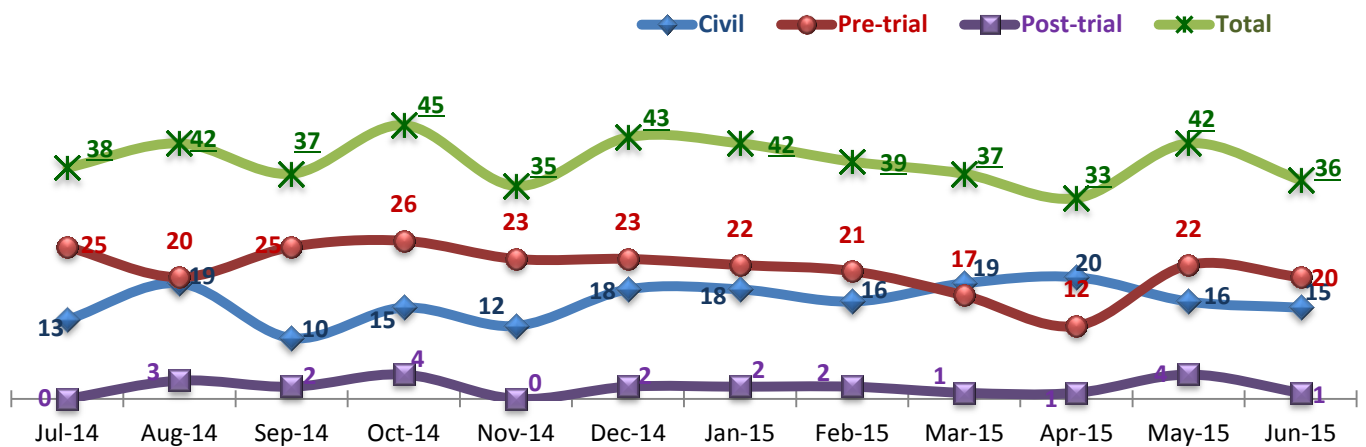
1. Admissions to SEH	1
2. Discharges from SEH	1
3. Average Daily Census.....	2
4. Transfers.....	2
5. 30-Day Readmission Rate	2
6. Unusual Incidents	3
7. Patient-Involved Unusual Incidents	3
8. Admissions vs. Patient UI Rate	4
9. Unusual Incidents by Severity.....	4
10. Selected Types of Incidents	4
11. Physical Assaults by Severity	5
12. Patient Injuries	5
13. Staff Injuries	5
14. Percent of Patients Restrained or Secluded	6
15. Restraint Hours Rate & Seclusion Hours Rate	6
16. Elopements.....	6
17. Reported Medication Variance Events.....	7
18. Reported Adverse Drug Reactions	7
19. Percent of Missing Documentation on Med-Administration.....	8
20. Medication Refusal Rate*.....	8
21. Number of STAT Events and Individuals Involved	8
22. Percentage of SiteFM Work Orders Completed within 3 Days	9
23. Demographics and Length of Stay.....	10

- Appendix 1) Table – Census, Admissions & Discharges
- Appendix 2) Table – Key Performance Indicators
- Appendix 3) Table – Unusual Incident & Medication
- Appendix 4) Table – Restraint & Seclusion
- Appendix 5) Table – Demographic Information of Individuals in Care
- Appendix 6) Table – Unusual Incidents by Unit

Key Trends: Admission, Discharge, Transfer, Census, and Readmissions (1~6)

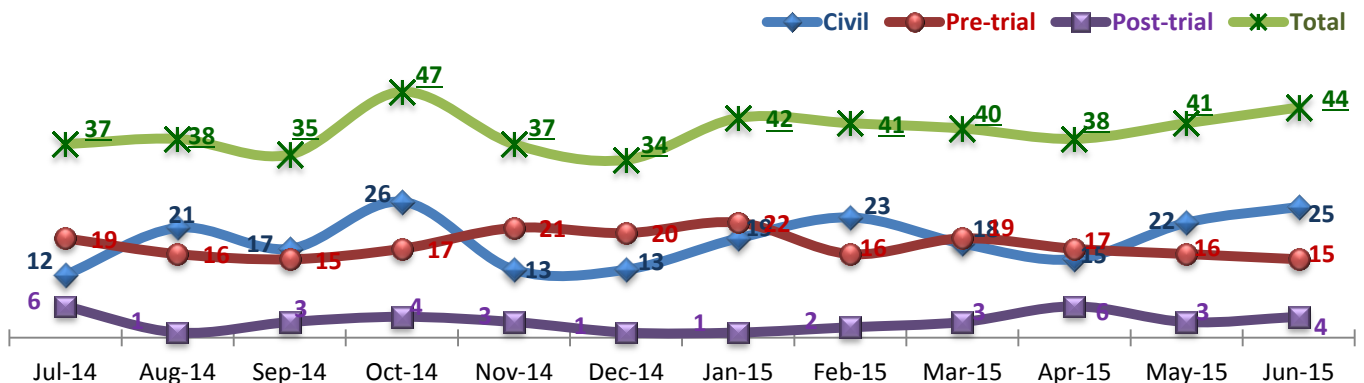
- In June 2015, the number of admissions decreased while the number of discharges increased, lowering the census: the average daily census (ADC) for the month of June is 270, a decline by 2 from ADC during May. ADC has been decreasing gradually and consistently since January 2015, when the Hospital was serving a total of 284 individuals in care on a given day.
- Despite a reduction of admissions and census, the number of emergency medical transfers increased slightly in the month of June 2015.
- There was only one 30-day readmission from May discharges. However, the 30-day readmission rate for FY15 year-to-date is 7.2%, which is much higher than the rate in FY14 (2.3%) and above the national average (NPR 6.9%)¹. A majority of 30-day readmissions (65% of 23) in FY15 are those discharged with a civil legal status. This is in contrast to FY14, when only 30% of 30-day readmissions were from *Civil* discharges.

1. Admissions to SEH



* Number of admissions to SEH inpatient program, including transfers from forensic outpatient to inpatient program.

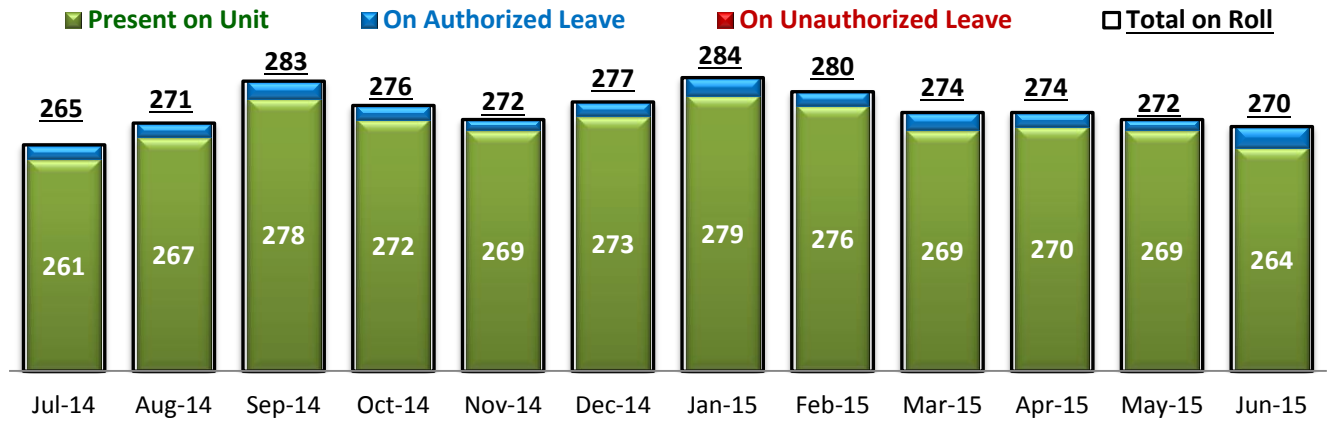
2. Discharges from SEH



* Number of discharges from SEH inpatient program, including transfers from inpatient to forensic outpatient program.

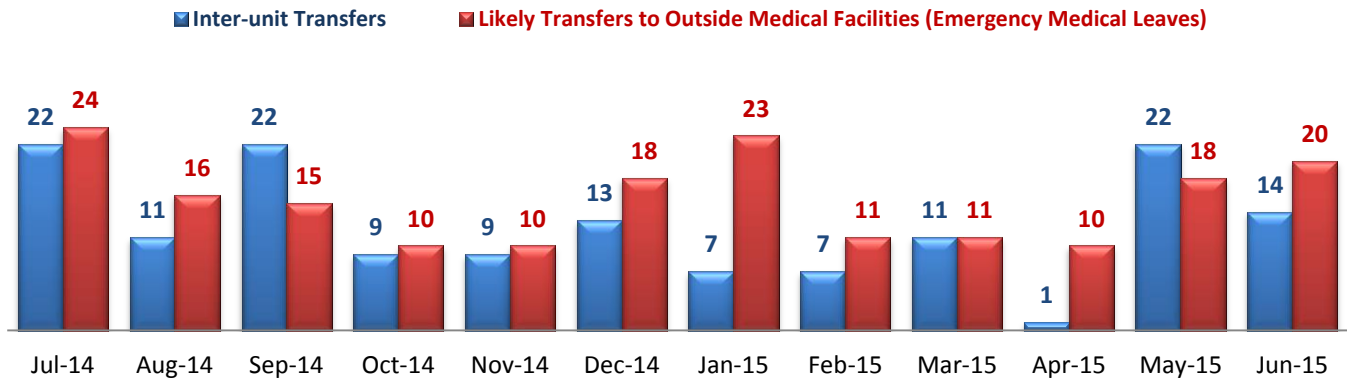
¹ NPR: National Public Rate as of June 2013 was published in November 2013 by National Association of State Mental Health Program Directors Research Institute (NRI), based on data collected from a number of state psychiatric hospitals nationwide.

3. Average Daily Census



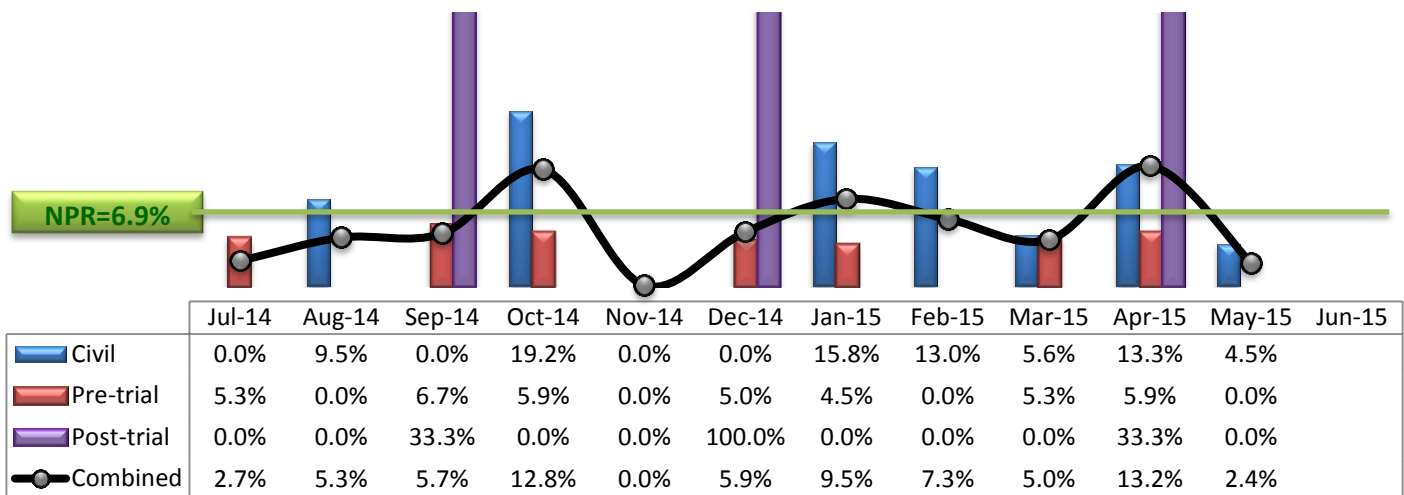
* Data above is the daily average number of individuals counted at 11:59 PM every day during each month.

4. Transfers



* Number of inter-unit transfers that occurred during month and number of emergency medical leaves that were initiated during month.

5. 30-Day Readmission Rate



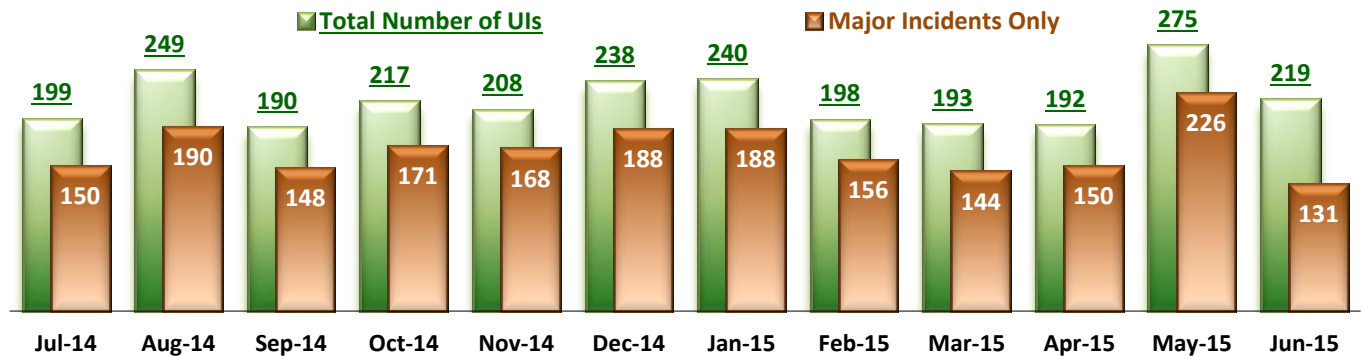
* Percent of discharges that returned to SEH within 30 days of discharges. It does not include those who may have been re-hospitalized at another psychiatric facility. This measure requires 30-day observation following discharge.

** The post-trial denominators (discharges) per month range only between one and six, making the monthly re-admission rate high when there is any. For example, in December 2014, there was only one post-trial discharge, which was readmitted within 30 days. Thus, the 30-day readmission rate for post-trial discharge for this month is 100%.

Key Trends: Unusual Incidents (6~16)

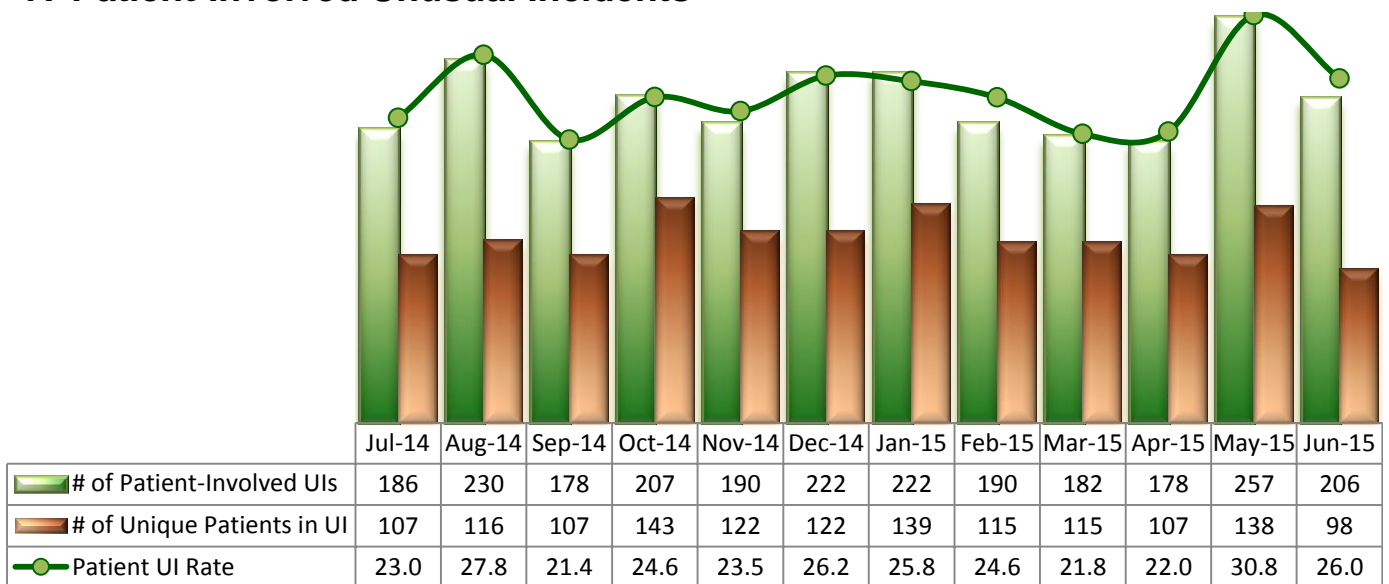
- In June 2015, the total number of unusual incidents (219 UIs) and the patient UI rate (26 per 1000 patient days) are noticeably lower than those in May as the number of admissions declined during the month. Particularly, the number of major UIs (131) in the month of June reached its lowest level since June 2014.
- In June, the number of high or medium severity incidents significantly declined while low severity incidents increased. The number of UIs involving violence such as aggressive behaviors, physical assaults, and psychiatric emergencies all considerably decreased. Accordingly, both patient injuries and staff injuries as well as fall incidents decreased noticeably.
- Since April 2015, the Hospital started tracking physical holds as restraint events as guided by the Joint Commission standard, and the frequency of restraint events and the number of unique individuals restrained substantially increased. However, a physical hold is typically used only briefly for involuntary administration of emergency medication or for intervention in a physical altercation. Thus, the measure of the restraint hours rate has been hardly affected by this change and is still far below the NPR.
- There were no elopements between July 2014 and April 2015 (for 10 months), but May and June 2015 each had one elopement incident.

6. Unusual Incidents



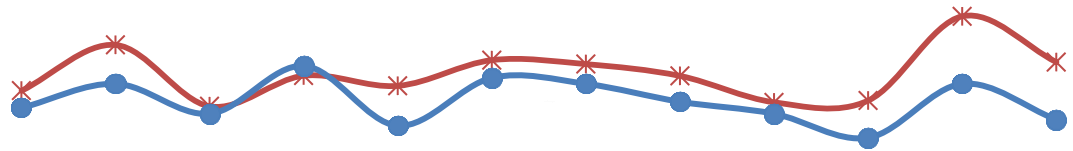
* A medication or vital sign refusal is no longer a UI since May 2014 and data above prior to May 2014 also excludes those incidents.

7. Patient-Involved Unusual Incidents



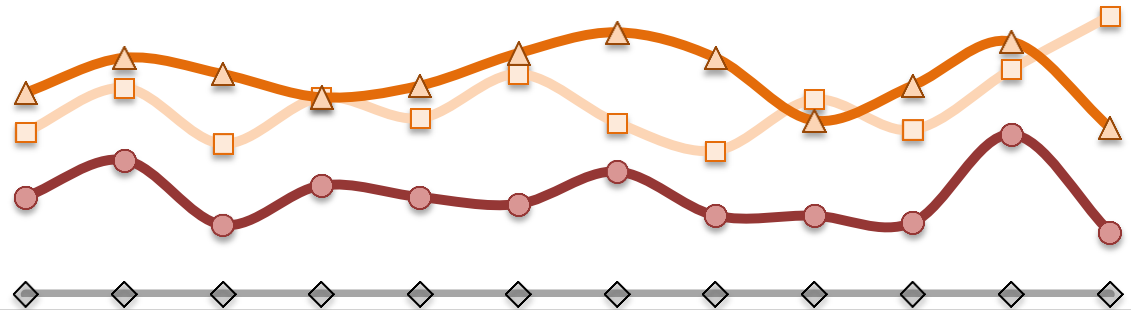
* The patient UI rate is the number of patient-involved unusual incidents reported for every 1000 inpatient days.

8. Admissions vs. Patient UI Rate



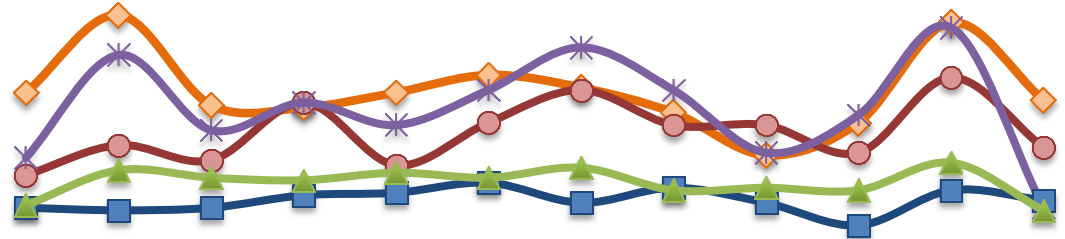
	Jul-14	Aug-14	Sep-14	Oct-14	Nov-14	Dec-14	Jan-15	Feb-15	Mar-15	Apr-15	May-15	Jun-15
✱ Patient UI Rate	23.0	27.8	21.4	24.6	23.5	26.2	25.8	24.6	21.8	22.0	30.8	26.0
● Admission	38	42	37	45	35	43	42	39	37	33	42	36

9. Unusual Incidents by Severity



	Jul-14	Aug-14	Sep-14	Oct-14	Nov-14	Dec-14	Jan-15	Feb-15	Mar-15	Apr-15	May-15	Jun-15
□ 1) Low	70	89	65	85	76	95	74	62	84	71	97	120
△ 2) Medium	87	102	95	85	90	104	113	102	75	90	109	72
● 3) High	42	58	30	47	42	39	53	34	34	31	69	27
◇ 4) Catstrp	0	0	0	0	0	0	0	0	0	0	0	0
Total UI	199	249	190	217	208	238	240	198	193	192	275	219

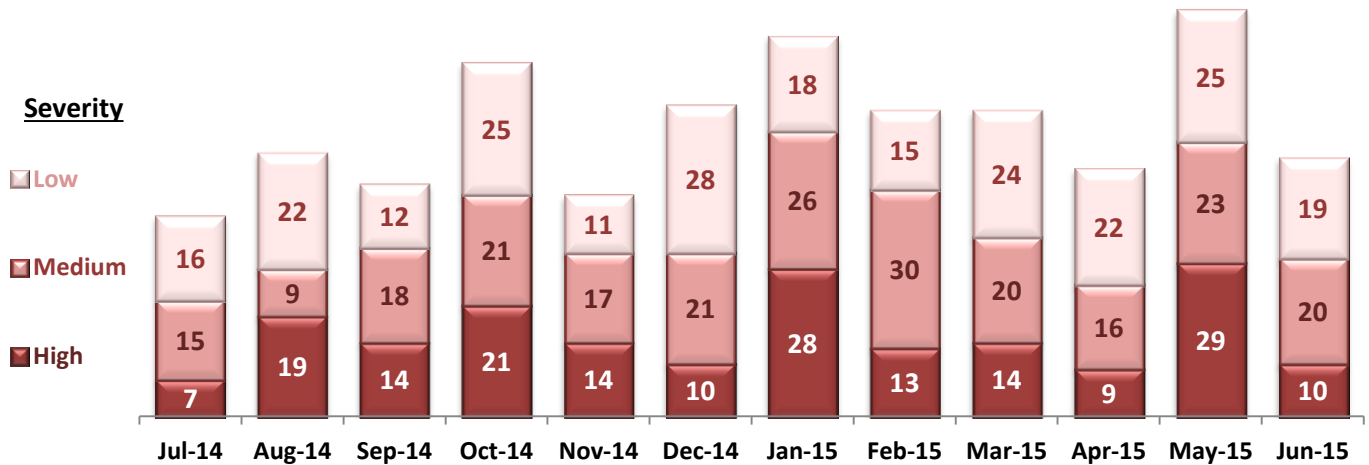
10. Selected Types of Incidents



	Jul-14	Aug-14	Sep-14	Oct-14	Nov-14	Dec-14	Jan-15	Feb-15	Mar-15	Apr-15	May-15	Jun-15
◇ Aggressive Behavior	71	102	66	65	71	78	73	63	46	59	99	68
● Physical Assault	38	50	44	67	42	59	72	58	58	47	77	49
✱ Pysch Emerg.	45	86	56	67	58	72	89	72	47	62	97	25
■ Fall	25	24	25	30	31	35	27	33	27	18	32	28
▲ Injury	26	40	37	36	39	37	41	32	33	32	43	24

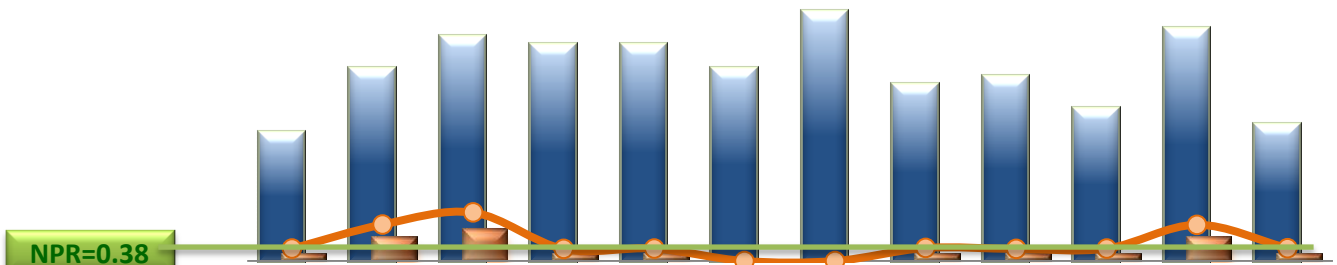
* These are incident types that are frequently reported. Some incidents may be counted in multiple categories. For example, a physical assault incident that accompanied psychiatric emergency and injury is counted under psychiatric emergency and injury as well as under physical assault. Injury is broadly defined to include any type of injuries regardless of the cause or severity level.

11. Physical Assaults by Severity



* Any physical assault that accompanies a code 13 or results in extensive injury needing off-unit treatment or transfer to ER is considered to be high severity, any physical assault that causes a minor injury that can be treated on unit is considered to be medium severity, and physical assault events that result in no injury are considered to be low severity.

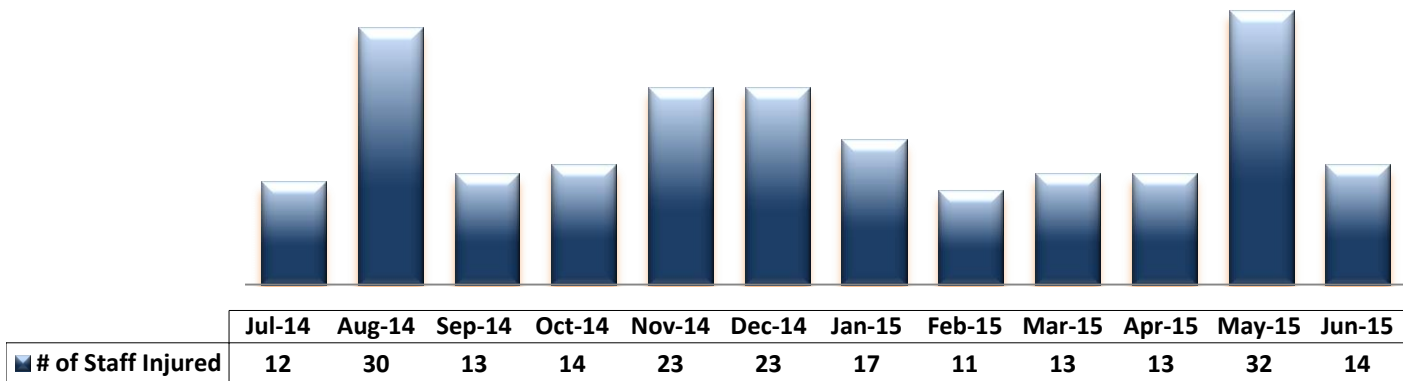
12. Patient Injuries



	Jul-14	Aug-14	Sep-14	Oct-14	Nov-14	Dec-14	Jan-15	Feb-15	Mar-15	Apr-15	May-15	Jun-15
Total Pts Injured	16	24	28	27	27	24	31	22	23	19	29	17
Major Pt Injuries*	1	3	4	1	1	0	0	1	1	1	3	1
Patient Injury Rate	0.12	0.36	0.48	0.12	0.12	0.00	0.00	0.13	0.12	0.12	0.36	0.13

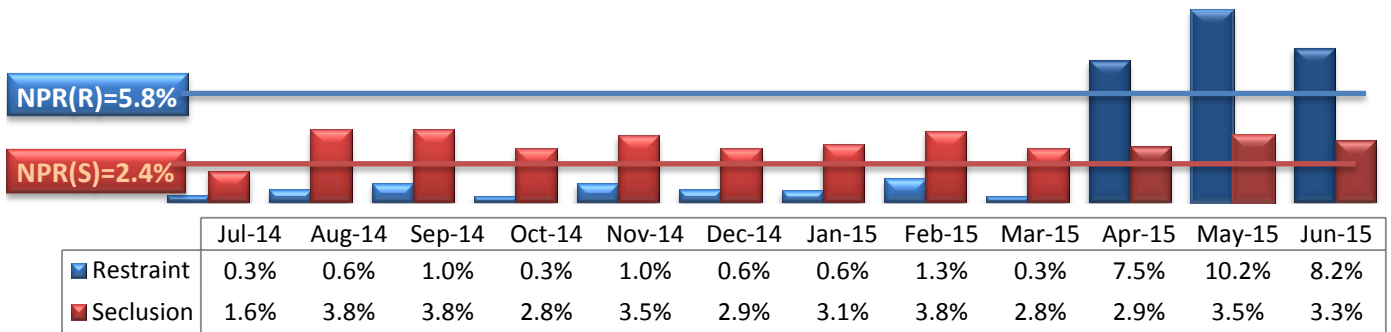
* Injury is broadly defined to include any type of injuries regardless of the cause or severity level. The total number of patients injured represents all of the reported injuries including minor injuries treated with first aid alone. However, the patient injury rate considers only the number of patient injuries that required beyond first-aid level treatment based on the NRI definition and the patient injury rate is the number of 'major' patient injuries per every 1000 inpatient days

13. Staff Injuries



* Injury is broadly defined to include any type of injuries regardless of the cause or severity level. The total number of staff injured represents all of the reported staff injuries including minor injuries treated with first aid alone.

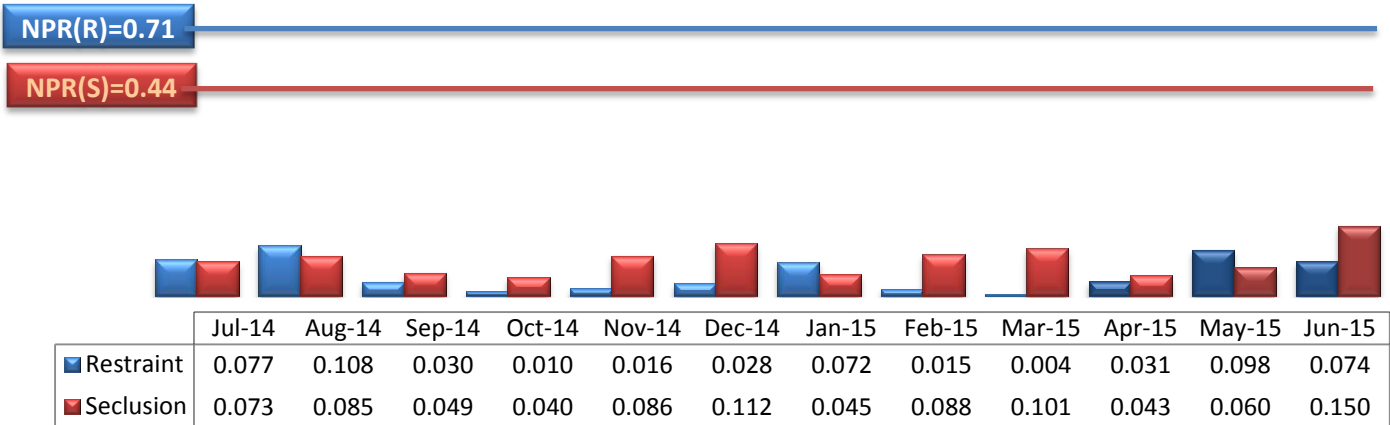
14. Percent of Patients Restrained or Secluded



* Percent of unique patients who were restrained at least once and percent of unique patients who were secluded at least once. The denominator includes all individuals who were served in care >=1 day during month.

** Data prior to April 2015, the Hospital tracked only mechanical restraint events, but the Hospital's restraint policy has changed to include any physical holds. The sudden increase of the restraint data as of April 2015 reflects this change.

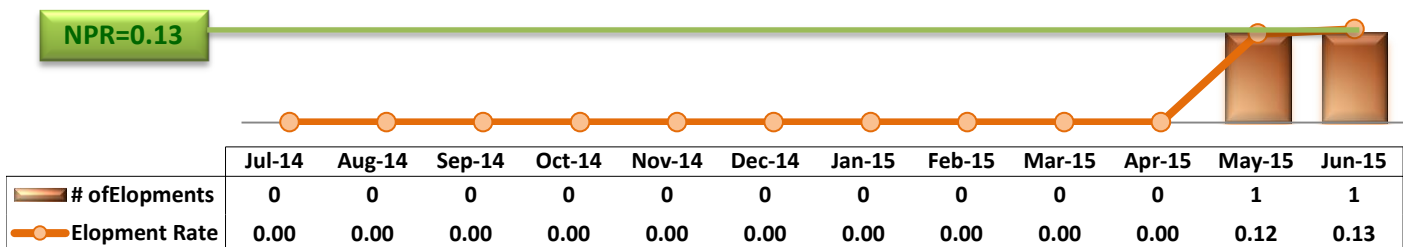
15. Restraint Hours Rate & Seclusion Hours Rate



* Restraint/Seclusion Hours Rate: Number of hours spent in restraint/seclusion for every 1000 inpatient hours.

** The duration of each physical hold event is counted as 1 minute as a physical hold is ordered and used only as a temporary intervention that lasts less than a minute to break up any physical conflicts or to administer emergency medications.

16. Elopements

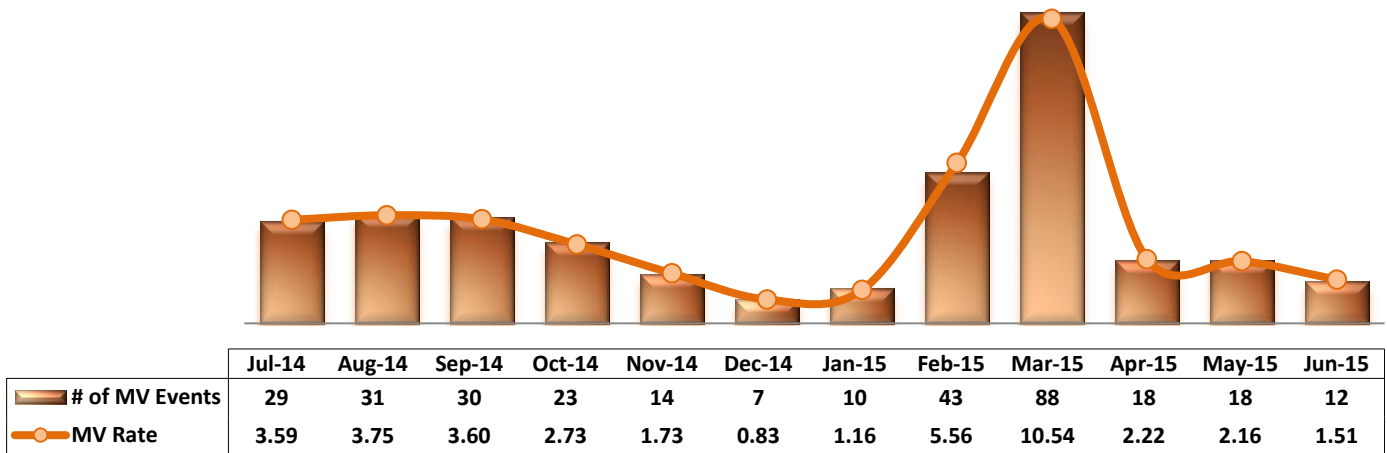


* It counts the total number of unauthorized leaves for any duration that were initiated during month and were recorded in Avatar. The elopement rate is the number of those unauthorized leaves that occurred for every 1000 inpatient days.

Key Trends: Medication Documentation, Medication Variance, ADR, and STAT (17~21)

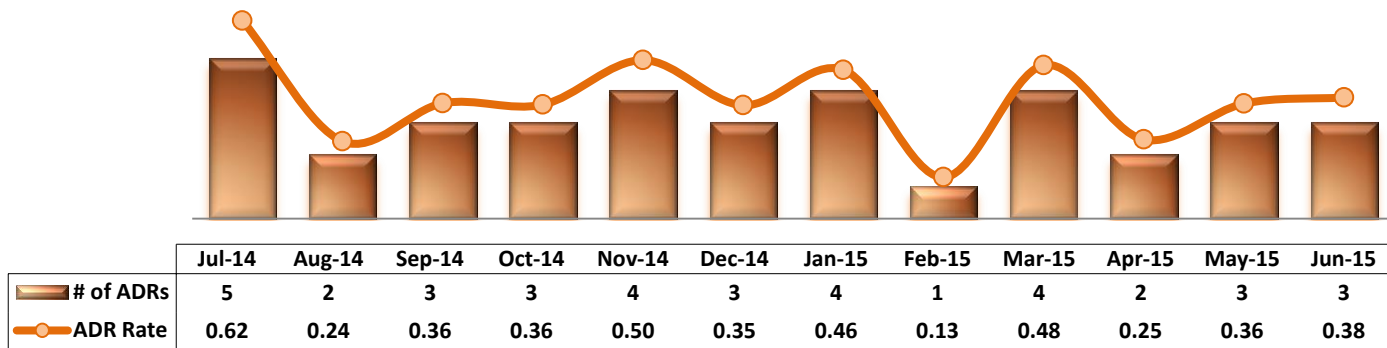
- The number of reported MVs declined to 12 for the month of June 2015.
- The number of reported ADRs ranged between one and four per month between August 2014 and June 2015.
- The rate of missing documentation on medication administration noticeably increased from 0.62% in May 2015 to 0.93% in June. This is the highest level since May 2010.
- The medication refusal rate fell below 6% in June 2015 for the first time since July 2014.
- As the number of violence related incidents, including psychiatric emergencies, declined significantly, the number of STAT events also considerably decreased in June 2015.

17. Reported Medication Variance Events



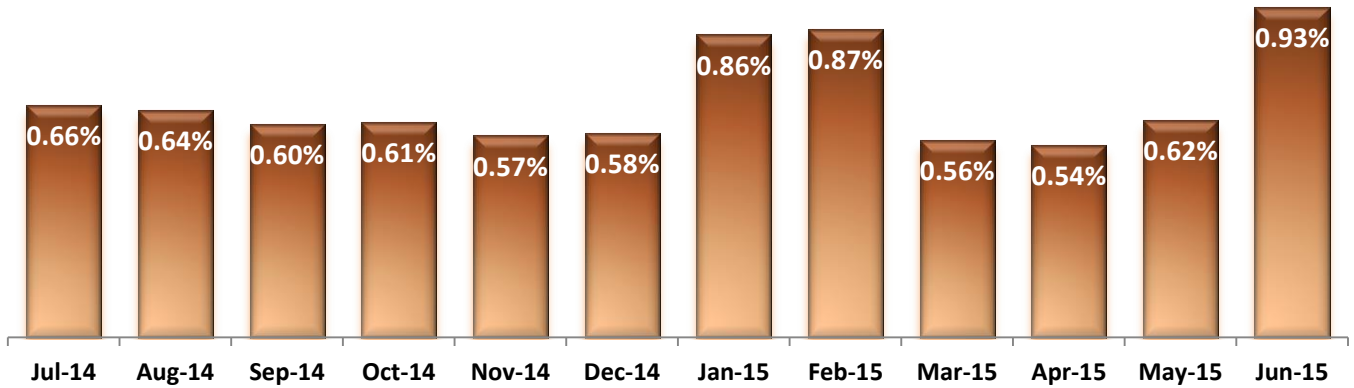
* MV Rate: Number of reported medication variance events that occurred for every 1000 inpatient days.

18. Reported Adverse Drug Reactions

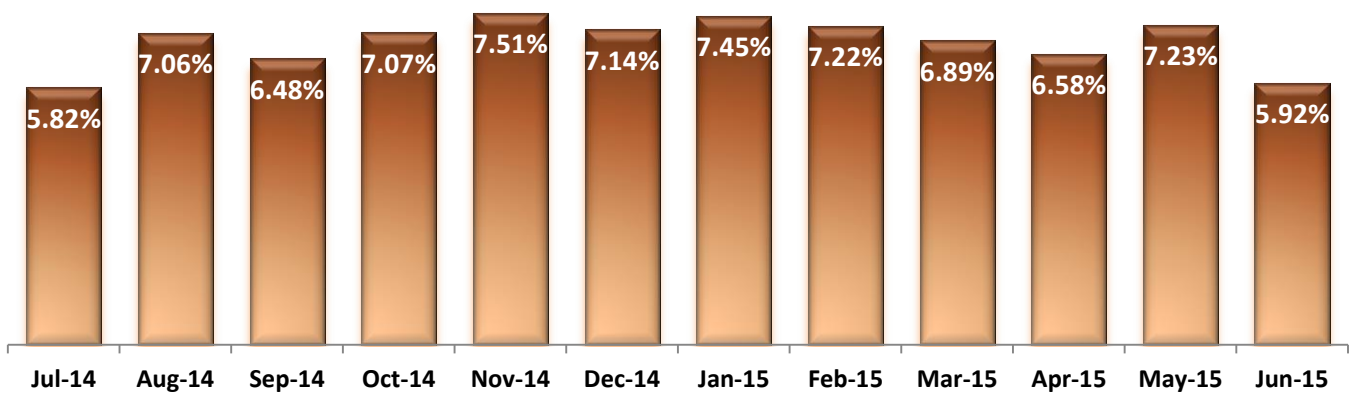


* ADR Rate: Number of reported adverse drug reaction events that occurred for every 1000 inpatient days.

19. Percent of Missing Documentation on Med-Administration

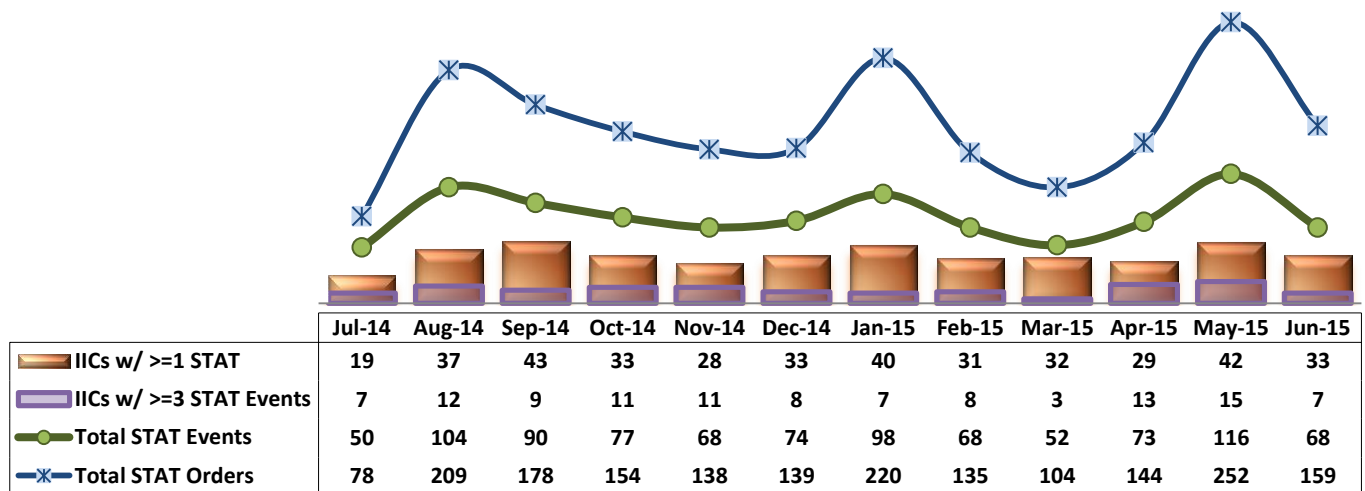


20. Medication Refusal Rate*



* Medication Refusal Rate: the number of refused medication doses divided by the total number of doses scheduled for administration.

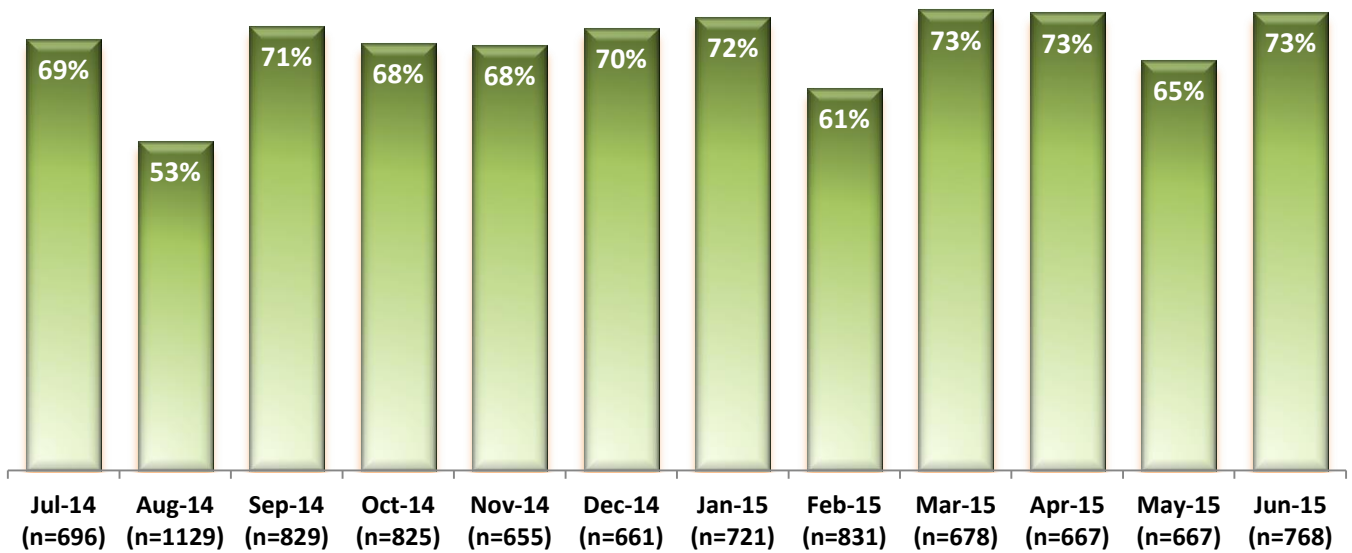
21. Number of STAT Events and Individuals Involved



Key Trends: Environment of Care (22)

- During CY2014, on average, the Hospital received a total of 773 work orders per month (or 25 per day) through SiteFM. Of those, 70% were completed within 3 days.
- In the month of June 2015, the Hospital received a total of 768 SiteFM work orders (26 per day).
- The 3-day completion rate of SiteFM work orders in June 2015 was 73%, which is an increase from 65% in May.

22. Percentage of SiteFM Work Orders Completed within 3 Days



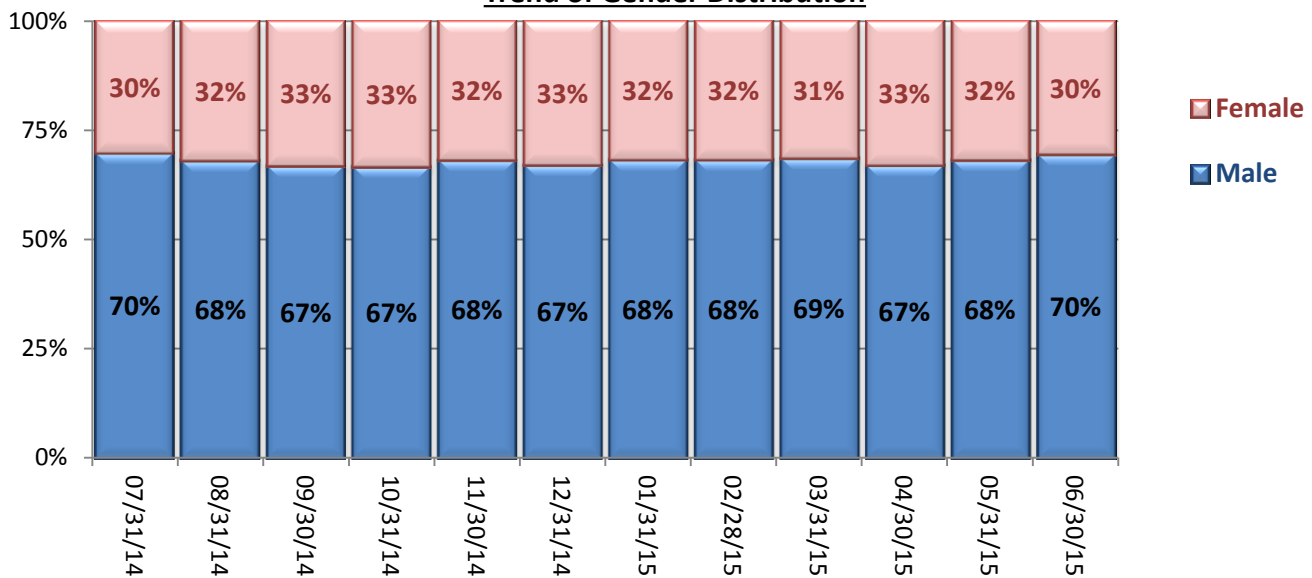
* This data has been analyzed for the first time as of early December 2014.

Key Trends: Demographics, Legal Status, and Length of Stay (23)

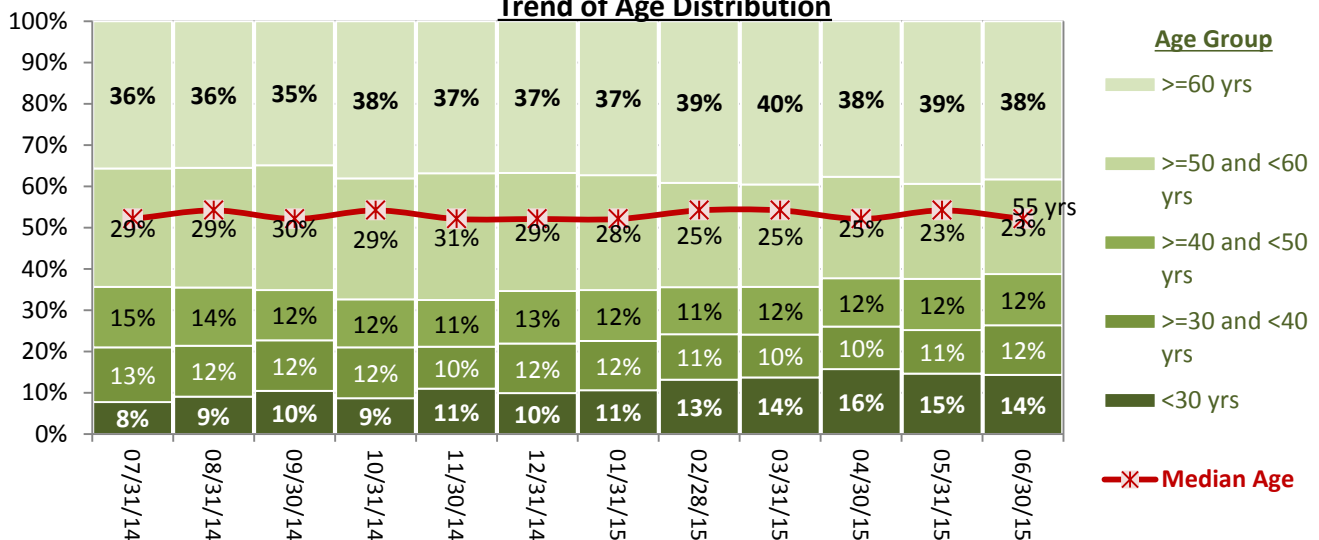
- The proportion of female individuals remaining in the Hospital’s care increased in FY14, from 26% as of October 2013 to 33% in September 2014; since then, the proportion of females has ranged between 30% and 33%.
- While the percent of individuals with 60 years or older ranged from 35% to 40%, the percent of individuals under 30 years old increased since May 2014, when only 6% among IICs were younger than 30 years of age. This age group reached 16% as of April 2015 and decreased only slightly in the past two months. This trend coincides with the significant increase in the number of Pre-trial admissions, which tend to include more of younger population, as well as individuals triggering violence related UIs.
- The median length of stay (LOS) for individuals remaining in care had been decreasing gradually since February 2014, falling to the lowest level (362 days or 12 months) as of December 31, 2014. Since then, the median LOS increased gradually and it is 448 days as of June 20, 2015.

23. Demographics and Length of Stay

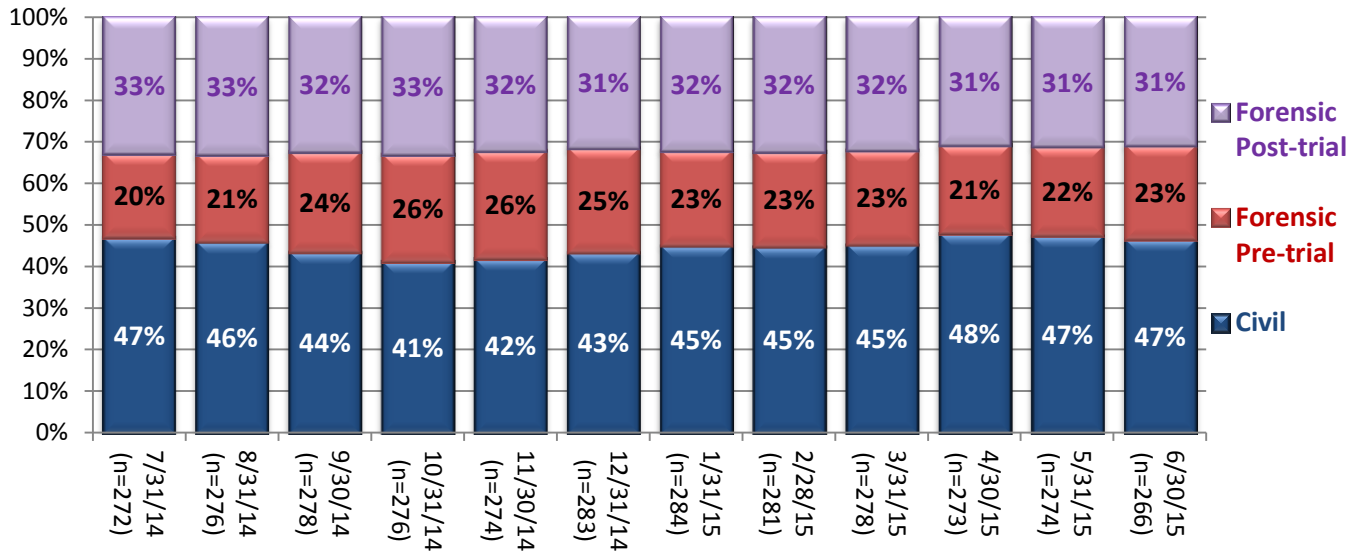
Trend of Gender Distribution



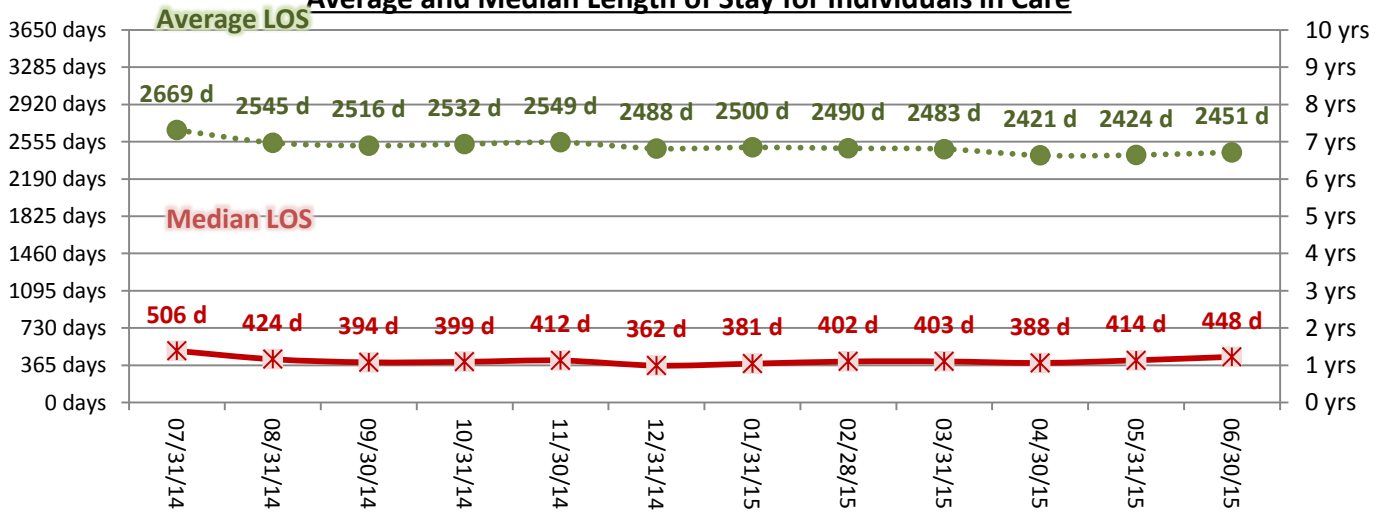
Trend of Age Distribution



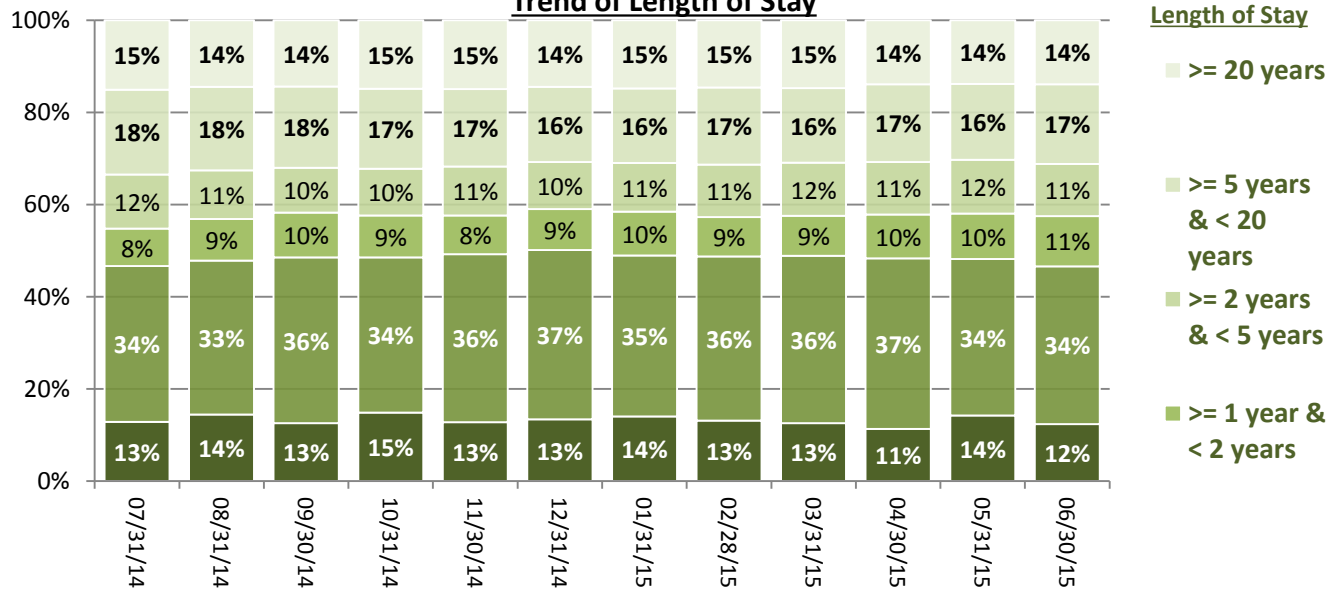
Trend of Legal Status Distribution



Average and Median Length of Stay for Individuals in Care



Trend of Length of Stay



Performance Related Information for Staff & Managers

1. Census, Admissions, Discharges & Transfers

Data Source: Avatar

Updated as of 07/14/15

Category	Jul-14	Aug-14	Sep-14	Oct-14	Nov-14	Dec-14	Jan-15	Feb-15	Mar-15	Apr-15	May-15	Jun-15	Monthly Average	Total (12mths)	Figure	
Admissions	Civil	13	19	10	15	12	18	18	16	19	20	16	15	16	191	Figure 1
	Pre-trial	25	20	25	26	23	23	22	21	17	12	22	20	21	256	
	Post-trial	0	3	2	4	0	2	2	2	1	1	4	1	2	22	
	Total	38	42	37	45	35	43	42	39	37	33	42	36	39	469	
Discharges	Civil	12	21	17	26	13	13	19	23	18	15	22	25	19	224	Figure 2
	Pre-trial	19	16	15	17	21	20	22	16	19	17	16	15	18	213	
	Post-trial	6	1	3	4	3	1	1	2	3	6	3	4	3	37	
	Total	37	38	35	47	37	34	42	41	40	38	41	44	40	474	
Net Increase During Month	Civil	1	-2	-7	-11	-1	5	-1	-7	1	5	-6	-10		-33	
	Pre-trial	6	4	10	9	2	3	0	5	-2	-5	6	5		43	
	Post-trial	-6	2	-1	0	-3	1	1	0	-2	-5	1	-3		-15	
	Total	1	4	2	-2	-2	9	0	-2	-3	-5	1	-8		-5	
All Individuals on Roll at End of Month	272	276	278	276	274	283	284	281	278	273	274	266	276			
a. Present on Unit	271	270	275	272	270	281	275	274	276	270	269	264	272			
b. On AL	1	6	3	4	4	2	9	7	2	3	5	2	4			
c. On UL	0	0	0	0	0	0	0	0	0	0	0	0	0			
All Individuals on Roll: Daily Average during Month*	265	271	283	276	272	277	284	280	274	274	272	270	275			
a. Present on Unit	261	267	278	272	269	273	279	276	269	270	269	264	271		Figure 3	
b. On AL	4	4	5	4	3	4	5	4	5	4	3	6	3.8			
c. On UL	0	0	0	0	0	0	0	0	0	0	0	0	0.00			
Patient Days**	8084	8277	8326	8422	8078	8472	8610	7738	8348	8095	8349	7925	8227	98724		
Inter-Unit Transfers during Month	22	11	22	9	9	13	7	7	11	1	22	14	12	148	Figure 4	
Medical Leaves Initiated during Month	Emergency	24	16	15	10	10	18	23	11	11	10	18	20	16	186	
	Non-Emer	88	67	68	62	71	61	59	55	71	79	81	96	72	858	
	Total	112	83	83	72	81	79	82	66	82	89	99	116	87	1044	
Non-Medical Leaves Initiated during Month	430	386	397	431	390	393	412	323	391	334	251	323	372	4461		
UL Initiated during Month	0	0	0	0	0	0	0	0	0	0	1	1	0	2		
Total Unique Patients Served during Month	305	312	312	318	310	315	326	320	317	306	314	305	313			
30 Day Readmission ***	Civil	0	2	0	5	0	0	3	3	1	2	1		2	17	
	Pre-trial	1	0	1	1	0	1	1	0	1	1	0		1	7	
	Post-trial	0	0	1	0	0	1	0	0	0	2	0		0	4	
	Total	1	2	2	6	0	2	4	3	2	5	1		3	28	

* This is the average number of individuals served on a given day for the respective month. Due to rounding from average calculation, numbers from its subcategories a, b, & c may not add up to the total number on this row.

** It counts the number of patients who are present on the unit and excludes those on authorized or unauthorized leave at 11:59pm on a given day.

*** Number of patients returning within 30 days of discharges that occurred during month.

Performance Related Information for Staff & Managers

2. Key Performance Indicators

Data Source: UI DB, MV DB, ADR DB, Restraint/Seclusion Log, and Avatar

Updated as of 07/14/15

Category	Jul-14	Aug-14	Sep-14	Oct-14	Nov-14	Dec-14	Jan-15	Feb-15	Mar-15	Apr-15	May-15	Jun-15	Monthly Average	NPR* (Jun-13)	Figure
30 Day Readmit (Discharge Cohort)**	Civil	0.0%	9.5%	0.0%	19.2%	0.0%	0.0%	15.8%	13.0%	5.6%	13.3%	4.5%	8.3%		Figure 5
	Pre-trial	5.3%	0.0%	6.7%	5.9%	0.0%	5.0%	4.5%	0.0%	5.3%	5.9%	0.0%	3.6%		
	Post-trial	0.0%	0.0%	33.3%	0.0%	0.0%	100.0%	0.0%	0.0%	0.0%	33.3%	0.0%	11.8%		
	Combined	2.7%	5.3%	5.7%	12.8%	0.0%	5.9%	9.5%	7.3%	5.0%	13.2%	2.4%	6.4%	6.9%	
Number of Unusual Incidents*	199	249	190	217	208	238	240	198	193	192	275	219	218		Figure 6
Patient Unusual Incident Rate	23.0	27.8	21.4	24.6	23.5	26.2	25.8	24.6	21.8	22.0	30.8	26.0	24.8		Figure 7
UI by Severity	Catastrophe	0	0	0	0	0	0	0	0	0	0	0	0		Figure 9
	High	42	58	30	47	42	39	53	34	34	31	69	27	42	
	Medium	87	102	95	85	90	104	113	102	75	90	109	72	94	
	Low	70	89	65	85	76	95	74	62	84	71	97	120	82	
Physical Assault Incident Rate	4.7	6.0	5.3	8.0	5.2	7.0	8.4	7.5	6.9	5.8	9.2	6.2	6.7		
Selected Types of Incidents	Physical Assault	38	50	44	67	42	59	72	58	58	47	77	49	55	Figure 10
	Aggressive Behav.	71	102	66	65	71	78	73	63	46	59	99	68	72	
	Psych Emergency	45	86	56	67	58	72	89	72	47	62	97	25	65	
	Fall	25	24	25	30	31	35	27	33	27	18	32	28	28	
	Injury	26	40	37	36	39	37	41	32	33	32	43	24	35	
Physical Assaults by Severity	High	7	19	14	21	14	10	28	13	14	9	29	10	13	Figure 11
	Medium	15	9	18	21	17	21	26	30	20	16	23	20	20	
	Low	16	22	12	25	11	28	18	15	24	22	25	19	20	
Patient Injury Rate***	0.12	0.36	0.48	0.12	0.12	0.00	0.00	0.13	0.12	0.12	0.36	0.13	0.17	0.38	Figure 12
Patients with Major Injuries***	1	3	4	1	1	0	0	1	1	1	3	1	1		
Total Patients Injured***	16	24	28	27	27	24	31	22	23	19	29	17	24		
Total Staff Injured***	12	30	13	14	23	23	17	11	13	13	32	14	18		Figure 13
Elopement Rate	0.00	0.00	0.00	0.00	0.00	0.00	0.00	0.00	0.00	0.00	0.12	0.13	0.02	0.13	Figure 16
Medication Variance Rate	3.59	3.75	3.60	2.73	1.73	0.83	1.16	5.56	10.54	2.22	2.16	1.51	3.27		Figure 17
Adverse Drug Reaction Rate	0.62	0.24	0.36	0.36	0.50	0.35	0.46	0.13	0.48	0.25	0.36	0.38	0.37		Figure 18
Missing Med-Admin Documentation	0.66%	0.64%	0.60%	0.61%	0.57%	0.58%	0.86%	0.87%	0.56%	0.54%	0.62%	0.93%	0.67%		Figure 19
Percent of Medication Refusal	5.82%	7.06%	6.48%	7.07%	7.51%	7.14%	7.45%	7.22%	6.89%	6.58%	7.23%	5.92%	6.87%		Figure 20
Percent of Patients Restrained	0.3%	0.6%	1.0%	0.3%	1.0%	0.6%	0.6%	1.3%	0.3%	7.5%	10.2%	8.2%	0.9%	5.8%	Figure 14
Percent of Patients Secluded	1.6%	3.8%	3.8%	2.8%	3.5%	2.9%	3.1%	3.8%	2.8%	2.9%	3.5%	3.3%	3.2%	2.4%	
Restraint Hours Rate	0.077	0.108	0.030	0.010	0.016	0.028	0.072	0.015	0.004	0.031	0.098	0.074	0.046	0.71	Figure 15
Seclusion Hours Rate	0.073	0.085	0.049	0.040	0.086	0.112	0.045	0.088	0.101	0.043	0.060	0.150	0.077	0.44	
SiteFM Work Orders Completed within 3 days	69%	53%	71%	68%	68%	70%	72%	61%	73%	73%	65%	73%	67%		Figure 22
Total SiteFM Work Orders	479	593	587	562	444	466	521	506	498	487	436	561	512	761	

* National Public Rate, NASMHPD Research Institute, National Research Institute (NRI), Data as of June 2013, Published in November 2013.

** Percentage of patients returning within 30 days of discharges that occurred during month

*** Refer to the next page [UI & Medication]

Performance Related Information for Staff & Managers

3. Unusual Incident & Medication

Data Source: UI DB, MV DB, ADR DB, and Avatar

Updated as of 07/14/15

Category	Jul-14	Aug-14	Sep-14	Oct-14	Nov-14	Dec-14	Jan-15	Feb-15	Mar-15	Apr-15	May-15	Jun-15	Monthly Average	Total (12mths)	NPR* (Jun-13)
Unusual Incidents (excluding MV)**															
Total UIs	199	249	190	217	208	238	240	198	193	192	275	219	218	2618	
Major UIs Only	150	190	148	171	168	188	188	156	144	150	226	131	168	2010	
Pt Involved UI Only	186	230	178	207	190	222	222	190	182	178	257	206	204	2448	
Patient UI Rate	23.0	27.8	21.4	24.6	23.5	26.2	25.8	24.6	21.8	22.0	30.8	26.0	24.8		
Unique Pts Involved in UI	107	116	107	143	122	122	139	115	115	107	138	98	119	1429	
Selected Types of Incidents															
Physical Assault	38	50	44	67	42	59	72	58	58	47	77	49	55	661	
Aggressive Behavior	71	102	66	65	71	78	73	63	46	59	99	68	72	861	
Psych Emergency	45	86	56	67	58	72	89	72	47	62	97	25	65	776	
Fall	25	24	25	30	31	35	27	33	27	18	32	28	28	335	
Injury	26	40	37	36	39	37	41	32	33	32	43	24	35	420	
Physical Assault Rate	4.7	6.0	5.3	8.0	5.2	7.0	8.4	7.5	6.9	5.8	9.2	6.2	6.7		
UI by Severity															
Catastrophe	0	0	0	0	0	0	0	0	0	0	0	0	0	0	
High	42	58	30	47	42	39	53	34	34	31	69	27	42	506	
Medium	87	102	95	85	90	104	113	102	75	90	109	72	94	1124	
Low	70	89	65	85	76	95	74	62	84	71	97	120	82	988	
Physical Assaults by Severity															
High	7	19	14	21	14	10	28	13	14	9	29	10	13	188	
Medium	15	9	18	21	17	21	26	30	20	16	23	20	20	236	
Low	16	22	12	25	11	28	18	15	24	22	25	19	20	237	
Total Patients Injured***	16	24	28	27	27	24	31	22	23	19	29	17	24	287	
Patients with Major Injuries***	1	3	4	1	1	0	0	1	1	1	3	1	1	17	
Patient Injury Rate***	0.12	0.36	0.48	0.12	0.12	0.00	0.00	0.13	0.12	0.12	0.36	0.13	0.17		0.38
Total Staff Injured**	12	30	13	14	23	23	17	11	13	13	32	14	18		
Total UIs Documented in Avatar	0	0	0	0	0	0	0	0	0	0	1	1	0	2	
Elopement Rate	0.00	0.00	0.00	0.00	0.00	0.00	0.00	0.00	0.00	0.00	0.12	0.13	0.02		0.13
Med Variance (MV) Reports**	29	31	30	23	14	7	10	43	88	18	18	12	27	323	
MV Rate	3.59	3.75	3.60	2.73	1.73	0.83	1.16	5.56	10.54	2.22	2.16	1.51	3.27		
Adverse Drug Reactions Reports	5	2	3	3	4	3	4	1	4	2	3	3	3	37	
ADR Rate	0.62	0.24	0.36	0.36	0.50	0.35	0.46	0.13	0.48	0.25	0.36	0.38	0.37		
Total Med Administrations Scheduled	107179	105835	103590	105994	104198	107578	109625	96178	103742	99674	101673	98847		1244113	
Total Missing Documentations	704	680	626	647	595	622	939	838	579	543	626	923		8322	
Percent of Missing Documentation	0.66%	0.64%	0.60%	0.61%	0.57%	0.58%	0.86%	0.87%	0.56%	0.54%	0.62%	0.93%		0.67%	
Total Medication Doses Refused	6239	7472	6712	7493	7823	7676	8164	6940	7145	6562	7352	5856		85434	
Percent of Medication Refusal	5.82%	7.06%	6.48%	7.07%	7.51%	7.14%	7.45%	7.22%	6.89%	6.58%	7.23%	5.92%		6.87%	
Total STAT Orders	78	209	178	154	138	139	220	135	104	144	252	159	159		Figure 21
Total STAT Events****	50	104	90	77	68	74	98	68	52	73	116	68	78		
Total Individuals Involved >=1 STAT	19	37	43	33	28	33	40	31	32	29	42	33	33		
Total Patients with >=3 STAT Events	7	12	9	11	11	8	7	8	3	13	15	7	9		

* National Public Rate, NASMHPD Research Institute, National Research Institute (NRI), Data as of June 2013, Published in November 2013.

** Numbers may change if any additional UI report is made after the data run date from UI database (around the 15th of the following month); According to the revised UI policy as of November 4, 2013, a medication variance (MV) incident became no longer considered to be an unusual incident, and a medication or vital sign refusal incident is not longer an UI as of May 2014. UI data for the past 12 months in this report has been updated to reflect this change and reanalyzed in order to show the UI trend in consistent logic.

*** Injury is broadly defined to include any type of injuries regardless of the cause or severity level. The total number of patients injured represents all of the reported injuries including minor injuries treated with first aid alone. However, the patient injury rate considers only the number of patient injuries that required beyond first-aid level treatment based on the NRI definition and the patient injury rate is the number of 'major' patient injuries per every 1000 inpatient days

**** One STAT event may involve more than one STAT order for the same patient. Any orders placed within 20 minute timeframe are considered to belong to one STAT event.

Performance Related Information for Staff & Managers

4. Restraint & Seclusion

Data Source: Restraint/Seclusion Log and UI DB (for # of total events and patients) and Avatar (for patient days/hours)

Updated as of 07/14/15

Category		Jul-14	Aug-14	Sep-14	Oct-14	Nov-14	Dec-14	Jan-15	Feb-15	Mar-15	Apr-15	May-15	Jun-15	Monthly Average	Total (12mths)	NPR* (Jun-13)
Number of Restraint Events	Mechanical	7	7	6	1	3	6	9	4	1	6	16	5	5.9	71	
	Physical Hold										42	61	35	46.0		
	Total										48	77	40	55.0		
Number of Unique Patients Restrained	Mechanical	1	2	3	1	3	2	2	4	1	3	7	5	2.8		
	Physical Hold										20	25	20	21.7		
	Total										23	32	25	26.7		
Percentage of Patients Restrained**	Mechanical	0.3%	0.6%	1.0%	0.3%	1.0%	0.6%	0.6%	1.3%	0.3%	1.0%	2.2%	1.6%	0.9%		
	Physical Hold										6.5%	8.0%	6.6%	7.0%		
	Total										7.5%	10.2%	8.2%	8.6%		5.8%
Total Restraint Hours (h:mm)**	Mechanical	15:00	21:25	6:00	2:00	3:06	5:38	14:56	2:46	0:50	5:19	18:37	13:22	9:04	108:59	
	Physical Hold										0:42	1:01	0:47	0:50		
	Total										6:01	19:38	14:09	13:16		
Restraint Hours Rate**	Mechanical	0.077	0.108	0.030	0.010	0.016	0.028	0.072	0.015	0.004	0.027	0.093	0.070	0.046		
	Physical Hold										0.004	0.005	0.004	0.004		
	Total										0.031	0.098	0.074	0.067		0.71
Number of Seclusion Events	14	21	17	12	19	14	15	20	15	15	15	20	21	16.9	203	
Number of Unique Patients Secluded	5	12	12	9	11	9	10	12	9	9	9	11	10	9.9		
Percentage of Patients Secluded	1.6%	3.8%	3.8%	2.8%	3.5%	2.9%	3.1%	3.8%	2.8%	2.9%	3.5%	3.3%	3.2%		2.4%	
Total Seclusion Hours (h:mm)	14:14	16:51	9:52	8:01	16:36	22:48	9:24	16:21	20:15	8:24	12:02	28:28	15:16	183:16		
Seclusion Hours Rate	0.073	0.085	0.049	0.040	0.086	0.112	0.045	0.088	0.101	0.043	0.060	0.150	0.077		0.44	

* National Public Rate, NASMHPD Research Institute, National Research Institute (NRI), Data as of June 2013, Published in November 2013.

** Restraint data prior to April 2015 includes only mechanical restraints. The Hospital's restraint policy has been revised to consider a physical hold a restraint and data as of April 2015 reflects this change. The duration of each physical hold event is counted as one (1) minute as a physical hold is ordered/used only as a temporary intervention that lasts less than a minute to break up any physical altercations or to administer emergency medications.

Performance Related Information for Staff & Managers

6. Major Unusual Incidents by Incident Location/Unit

Data Source: UI DB

Updated as of 07/14/15

Category		Jul-14	Aug-14	Sep-14	Oct-14	Nov-14	Dec-14	Jan-15	Feb-15	Mar-15	Apr-15	May-15	Jun-15	Monthly Average	Total (12mths)	Percent
Total Unusual Incidents		199	249	190	217	208	238	240	198	193	192	275	219	218	2618	100%
Incident Location	1A	7	15	4	11	12	9	5	5	11	13	16	18	11	126	5%
	1B	21	19	10	18	14	12	12	10	12	18	9	7	14	162	6%
	1C	6	12	18	32	14	24	28	25	7	7	33	22	19	228	9%
	1D	19	29	20	7	18	40	37	15	23	26	29	18	23	281	11%
	1E	12	22	21	25	15	26	15	12	12	24	37	13	20	234	9%
	1F	37	32	28	25	23	34	43	28	28	20	46	28	31	372	14%
	1G	12	28	20	13	7	7	11	12	7	15	12	15	13	159	6%
	2A	6	10	7	4	12	7	16	3	6	5	7	5	7	88	3%
	2B	2	4	8	5	15	2	2	3	3	4	5	3	5	56	2%
	2C	22	20	9	17	10	16	14	24	10	2	9	19	14	172	7%
	2D	20	18	17	18	26	22	19	19	33	24	22	24	22	262	10%
	TLC	14	20	15	26	26	23	21	31	27	16	25	32	23	276	11%
	Other	21	20	13	16	16	16	17	11	14	18	25	15	17	202	8%
Physical Assault		38	50	44	67	42	59	72	58	58	47	77	49	55	661	100%
Incident Location	1A	2	2	1	0	0	0	1	2	4	2	3	4	2	21	3%
	1B	3	0	2	4	2	3	0	1	0	1	0	0	1	16	2%
	1C	1	0	3	9	0	8	6	6	2	1	15	4	5	55	8%
	1D	5	14	11	4	3	5	10	4	7	7	6	3	7	79	12%
	1E	5	1	4	12	4	3	5	4	8	5	6	5	5	62	9%
	1F	5	3	5	8	9	19	15	13	10	8	20	13	11	128	19%
	1G	3	8	9	4	0	2	4	5	1	4	1	7	4	48	7%
	2A	0	0	0	1	1	2	5	1	0	1	0	0	1	11	2%
	2B	2	0	0	0	1	0	0	0	0	0	0	0	0	3	0%
	2C	4	3	2	4	6	5	7	10	4	0	3	3	4	51	8%
	2D	1	11	4	11	8	6	7	4	12	12	8	4	7	88	13%
	TLC - Intensive	2	3	0	7	5	4	8	6	9	2	7	5	5	58	9%
	TLC - Transitional	2	4	3	0	3	1	3	1	1	3	2	0	2	23	3%
	Other	3	1	0	3	0	1	1	1	0	1	6	1	2	18	3%

Performance Related Information for Staff & Managers

6. Major Unusual Incidents by Incident Location/Unit

Data Source: UI DB

Updated as of 07/14/15

Category		Jul-14	Aug-14	Sep-14	Oct-14	Nov-14	Dec-14	Jan-15	Feb-15	Mar-15	Apr-15	May-15	Jun-15	Monthly Average	Total (12mths)	Percent
Aggressive Behavior		71	102	66	65	71	78	73	63	46	59	99	68	72	861	130%
Incident Location	1A	1	5	1	2	1	3	0	0	0	1	0	2	1	16	2%
	1B	3	7	4	5	2	1	0	0	1	3	0	0	2	26	4%
	1C	3	6	7	10	3	7	10	12	2	2	9	9	7	80	12%
	1D	4	12	7	1	7	23	21	8	7	14	15	11	11	130	20%
	1E	2	15	11	8	7	13	7	5	1	12	21	4	9	106	16%
	1F	20	18	10	14	11	12	15	10	7	7	24	12	13	160	24%
	1G	5	14	8	0	2	0	0	2	1	6	8	4	4	50	8%
	2A	4	7	3	1	2	1	6	2	2	1	3	2	3	34	5%
	2B	0	1	4	2	11	0	0	0	0	0	0	0	2	18	3%
	2C	12	6	3	5	2	4	1	5	3	0	2	8	4	51	8%
	2D	8	1	2	5	11	8	5	7	11	6	7	5	6	76	11%
	TLC - Intensive	4	3	3	3	4	3	4	8	6	4	4	6	4	52	8%
	TLC - Transitional	3	4	1	4	5	1	3	2	2	3	5	4	3	37	6%
	Other	2	3	2	5	3	2	1	2	3	0	1	1	2	25	4%
Psych Emergency		45	86	56	67	58	72	89	72	47	62	97	25	65	776	117%
Incident Location	1A	1	1	0	1	0	3	1	1	0	1	0	0	1	9	1%
	1B	2	3	1	7	2	1	0	0	0	3	1	0	2	20	3%
	1C	1	3	2	12	0	4	8	7	4	1	19	2	5	63	10%
	1D	3	18	9	3	9	14	16	11	9	14	16	5	11	127	19%
	1E	1	16	16	14	10	15	11	7	5	17	20	5	11	137	21%
	1F	19	13	10	15	16	19	22	15	15	10	26	9	16	189	29%
	1G	5	16	12	3	0	0	1	2	1	4	2	1	4	47	7%
	2A	0	0	0	0	0	1	4	1	0	2	3	1	1	12	2%
	2B	0	1	0	0	5	0	0	0	0	0	0	0	1	6	1%
	2C	7	7	0	4	0	1	4	7	1	0	0	0	3	31	5%
	2D	3	5	3	5	11	13	14	9	3	7	3	2	7	78	12%
	TLC - Intensive	2	2	0	2	2	1	5	10	6	1	1	0	3	32	5%
	TLC - Transitional	0	1	2	0	2	0	3	0	1	2	4	0	1	15	2%
	Other	1	0	1	1	1	0	0	2	2	0	2	0	1	10	2%

Performance Related Information for Staff & Managers

6. Major Unusual Incidents by Incident Location/Unit

Data Source: UI DB

Updated as of 07/14/15

Category		Jul-14	Aug-14	Sep-14	Oct-14	Nov-14	Dec-14	Jan-15	Feb-15	Mar-15	Apr-15	May-15	Jun-15	Monthly Average	Total (12mths)	Percent
Fall		25	24	25	30	31	35	27	33	27	18	32	28	28	335	100%
Incident Location	1A	1	4	2	4	9	3	3	2	5	0	8	8	4	49	15%
	1B	4	6	4	4	5	4	3	6	3	2	2	5	4	48	14%
	1C	0	1	0	5	2	8	2	0	3	1	2	0	2	24	7%
	1D	5	2	3	2	2	1	1	0	2	4	1	0	2	23	7%
	1E	0	1	1	2	2	1	0	2	0	0	0	1	2	12	4%
	1F	3	1	2	1	2	2	7	4	3	1	2	1	2	29	9%
	1G	2	2	1	2	1	1	2	4	1	1	1	2	4	23	7%
	2A	0	0	1	0	0	2	0	0	1	1	1	2	0	7	2%
	2B	0	1	2	2	1	0	0	1	1	2	2	2	1	13	4%
	2C	3	1	0	1	0	5	3	5	0	0	0	0	1	19	6%
	2D	4	1	5	2	1	1	1	3	3	2	3	3	2	29	9%
	TLC - Intensive	0	0	1	1	1	1	2	1	1	1	1	4	1	14	4%
	TLC - Transitional	1	2	1	1	3	3	0	1	0	0	0	0	0	12	4%
	Other	2	2	2	3	2	3	3	4	4	4	3	3	2	33	10%
Physical Injury		26	40	37	36	39	37	41	32	33	32	43	24	35	420	100%
Incident Location	1A	2	2	1	0	1	0	2	2	2	2	3	1	2	18	4%
	1B	4	2	1	2	3	1	0	1	3	5	2	0	2	24	6%
	1C	0	2	1	6	0	3	5	4	3	0	8	2	3	34	8%
	1D	3	6	8	3	3	7	4	1	7	5	6	3	5	56	13%
	1E	5	4	2	7	4	1	0	2	1	2	4	3	3	35	8%
	1F	1	4	12	5	8	8	5	8	7	3	6	6	6	73	17%
	1G	2	6	0	3	1	2	3	1	0	1	0	1	2	20	5%
	2A	0	0	1	0	2	2	0	1	0	2	0	0	0	8	2%
	2B	1	0	1	0	0	0	0	0	0	0	1	1	1	5	1%
	2C	3	4	2	2	2	4	6	6	1	0	1	2	3	33	8%
	2D	2	1	4	2	7	5	5	1	1	4	3	3	3	38	9%
	TLC - Intensive	1	2	0	4	3	1	7	1	5	2	4	1	3	31	7%
	TLC - Transitional	0	2	2	0	3	2	1	2	0	0	2	0	1	14	3%
	Other	2	5	2	2	2	1	3	2	3	5	3	1	3	31	7%

* Not every incident is a major incident. This counts only those incidents that were classified to be major based on the policy.

Performance Related Information for Staff & Managers

5. Demographic Information of Individuals in Care

Data Source: Avatar

Updated as of 07/14/15

Category	Sub-group	Jul-14	Aug-14	Sep-14	Oct-14	Nov-14	Dec-14	Jan-15	Feb-15	Mar-15	Apr-15	May-15	Jun-15	Monthly Average	Percent*
Total Active (on Roll) at End of Month*		272	276	278	276	274	283	284	281	278	273	274	266	276	
Gender	Female	82	88	92	92	87	93	90	89	87	90	87	81	88	31.9%
	Male	190	188	186	184	187	190	194	192	191	183	187	185	188	68.1%
Age	Median Age (Years)	55 yrs	56 yrs	55 yrs	56 yrs	55 yrs	55 yrs	55 yrs	56 yrs	56 yrs	55 yrs	56 yrs	55 yrs	55 yrs	
	<30 years old	21	25	29	24	30	28	30	37	38	43	40	38	32	11.6%
	>=30 and <40 years old	36	34	34	34	28	34	34	31	29	28	29	32	32	11.6%
	>=40 and <50 years old	40	39	34	32	31	36	35	32	32	32	34	33	34	12.4%
	>=50 and <60 years old	78	80	84	81	84	81	79	71	69	67	63	61	75	27.1%
	>=60 years old	97	98	97	105	101	104	106	110	110	103	108	102	103	37.4%
Legal Status of Individuals on Roll at End of Month	Emergency	28	25	27	22	21	29	27	27	38	45	38	32	30	10.8%
	Inpatient Commitment	36	39	34	35	35	35	36	36	33	35	34	34	35	12.7%
	Outpatient Commitment	28	23	23	22	27	27	27	28	17	16	21	22	23	8.5%
	Voluntary	36	40	37	35	32	32	37	34	38	35	37	36	36	12.9%
	Non-Protesting	0	0	0	0	0	0	1	1	0	0	0	0	0	0.1%
	Civil Sub-total	128	127	121	114	115	123	128	126	126	131	130	124	124	45.0%
	DC Exam	28	30	31	40	35	43	40	41	38	38	39	30	36	13.1%
	Mentally Incompetent	27	28	36	31	36	28	25	23	25	20	20	30	27	9.9%
	Forensic Pre-trial Sub-total	55	58	67	71	71	71	65	64	63	58	59	60	64	23.0%
	NGBRI - DC	74	75	74	76	74	75	76	76	74	70	72	69	74	26.7%
	NGBRI - US	11	11	11	10	10	10	10	10	10	9	9	9	10	3.6%
	NGBRI - VI	1	1	1	1	1	1	1	1	1	1	1	1	1	0.4%
	Dual Commitment	1	2	2	2	1	1	1	1	1	1	0	0	1	0.4%
Sexual Psychopath (Miller Act)	2	2	2	2	2	2	3	3	3	3	3	3	3	0.9%	
Forensic Post-trial Sub-total	89	91	90	91	88	89	91	91	89	84	85	82	88	32.0%	
Length of Stay	Median LOS (Days)	506 d	424 d	394 d	399 d	412 d	362 d	381 d	402 d	403 d	388 d	414 d	448 d	411 d	
	Average LOS (Days)	2669 d	2545 d	2516 d	2532 d	2549 d	2488 d	2500 d	2490 d	2483 d	2421 d	2424 d	2451 d	2506 d	
	<30 Days	35	40	35	41	35	38	40	37	35	31	39	33	37	13.2%
	>=30 ~ <365 Days	92	92	100	93	100	104	99	100	101	101	93	91	97	35.2%
	>= 1 Year & < 2 Years	22	25	27	25	23	25	27	24	24	26	27	29	25	9.2%
	>= 2 Years & < 5 Years	32	29	27	28	29	29	30	32	32	31	32	30	30	10.9%
	>= 5 Years & < 20 Years	50	50	49	48	46	46	46	47	45	46	45	46	47	17.0%
>= 20 Years	41	40	40	41	41	41	42	41	41	38	38	37	40	14.5%	

* Counts the total number of individuals who are on the hospital roll at end of each month. This number serves as denominator to calculate percentage of each group.

Performance Related Information for Staff & Managers

6. Demographic Information of Individuals in Care

Data Source: Avatar

Updated as of 07/14/15

Category	Sub-group	Jul-14	Aug-14	Sep-14	Oct-14	Nov-14	Dec-14	Jan-15	Feb-15	Mar-15	Apr-15	May-15	Jun-15	Monthly Average	Percent*	
Total Active (on Roll) at End of Month*		272	276	278	276	274	283	284	281	278	273	274	266	276		
Gender	Female	30%	32%	33%	33%	32%	33%	32%	32%	31%	33%	32%	30%	32%		
	Male	70%	68%	67%	67%	68%	67%	68%	68%	69%	67%	68%	70%	68%		
Age	Median Age (Years)	55 yrs	56 yrs	55 yrs	56 yrs	55 yrs	55 yrs	55 yrs	56 yrs	56 yrs	55 yrs	56 yrs	55 yrs	55 yrs		
	<30 yrs	8%	9%	10%	9%	11%	10%	11%	13%	14%	16%	15%	14%	12%		
	>=30 and <40 yrs	13%	12%	12%	12%	10%	12%	12%	11%	10%	10%	11%	12%	12%		
	>=40 and <50 yrs	15%	14%	12%	12%	11%	13%	12%	11%	12%	12%	12%	12%	12%		
	>=50 and <60 yrs	29%	29%	30%	29%	31%	29%	28%	25%	25%	25%	25%	23%	23%	27%	
	>=60 yrs	36%	36%	35%	38%	37%	37%	37%	39%	40%	38%	38%	39%	38%	37%	
Legal Status of Individuals on Roll at End of Month	Emergency	10%	9%	10%	8%	8%	10%	10%	10%	14%	16%	14%	12%	11%		
	Inpatient Commitment	13%	14%	12%	13%	13%	12%	13%	13%	12%	13%	12%	13%	13%		
	Outpatient Commitment	10%	8%	8%	8%	10%	10%	10%	10%	6%	6%	8%	8%	8%		
	Voluntary	13%	14%	13%	13%	12%	11%	13%	12%	14%	13%	14%	14%	13%		
	Non-Protesting	0%	0%	0%	0%	0%	0%	0%	0%	0%	0%	0%	0.0%	0%		
	Civil Sub-total	47%	46%	44%	41%	42%	43%	45%	45%	45%	48%	47%	47%	45%		
	DC Exam	10%	11%	11%	14%	13%	15%	14%	15%	14%	14%	14%	11%	13%		
	Mentally Incompetent	10%	10%	13%	11%	13%	10%	9%	8%	9%	7%	7%	11%	10%		
	Forensic Pre-trial Sub-total	20%	21%	24%	26%	26%	25%	23%	23%	23%	21%	22%	23%	23%		
	NGBRI - DC	27%	27%	27%	28%	27%	27%	27%	27%	27%	26%	26%	26%	27%		
	NGBRI - US	4%	4%	4%	4%	4%	4%	4%	4%	4%	3%	3%	3%	4%		
	NGBRI - VI	0%	0%	0%	0%	0%	0%	0%	0%	0%	0%	0%	0%	0%		
	Dual Commitment	0%	1%	1%	1%	0%	0%	0%	0%	0%	0%	0%	0%	0%		
Sexual Psychopath (Miller Ac	1%	1%	1%	1%	1%	1%	1%	1%	1%	1%	1%	1%	1%			
Forensic Post-trial Sub-total	33%	33%	32%	33%	32%	31%	32%	32%	32%	32%	31%	31%	31%	32%		
Length of Stay	Median LOS (Days)	506 d	424 d	394 d	399 d	412 d	362 d	381 d	402 d	403 d	388 d	414 d	448 d	411 d		
	Average LOS (Days)	2669 d	2545 d	2516 d	2532 d	2549 d	2488 d	2500 d	2490 d	2483 d	2421 d	2424 d	2451 d	2506 d		
	<30 days	13%	14%	13%	15%	13%	13%	14%	13%	13%	11%	14%	12%	13%		
	>=30 days & <365 days	34%	33%	36%	34%	36%	37%	35%	36%	36%	37%	34%	34%	35%		
	>= 1 year & < 2 years	8%	9%	10%	9%	8%	9%	10%	9%	9%	10%	10%	11%	9%		
	>= 2 years & < 5 years	12%	11%	10%	10%	11%	10%	11%	11%	12%	11%	12%	11%	11%		
	>= 5 years & < 20 years	18%	18%	18%	17%	17%	16%	16%	17%	16%	17%	16%	17%	17%		
>= 20 years	15%	14%	14%	15%	15%	14%	15%	15%	15%	14%	14%	14%	15%			

* Counts the total number of individuals who are on the hospital roll at end of each month. This number serves as denominator to calculate percentage of each group.