



Government of the District of Columbia
Department of Behavioral Health (DBH)



PRISM

Performance Related Information for Staff and Managers



DECEMBER 2014

Office of Statistics and Reporting (OSR), 01/16/15

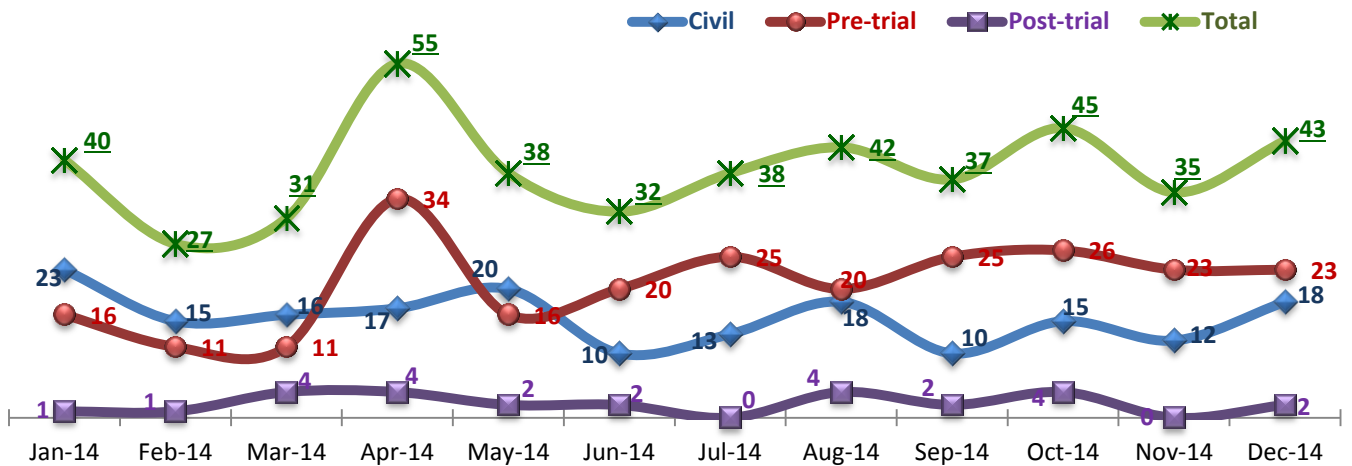
Table of Contents

1. Admissions to SEH	1
2. Discharges from SEH	1
3. Average Daily Census	2
4. Transfers	2
5. 30-Day Readmission Rate.....	2
6. Unusual Incidents	3
7. Patient-Involved Unusual Incidents	3
8. Admissions vs. Patient UI Rate	4
9. Unusual Incidents by Severity	4
10. Selected Types of Incidents	4
11. Physical Assaults by Severity	5
12. Patient Injuries	5
13. Staff Injuries	5
14. Percent of Patients Restrained or Secluded	6
15. Restraint Hours Rate & Seclusion Hours Rate.....	6
16. Elopements	6
17. Reported Medication Variance Events.....	7
18. Reported Adverse Drug Reactions	7
19. Percent of Missing Documentation on Med-Administration	8
20. Medication Refusal Rate*	8
21. Number of STAT Events and Individuals Involved.....	8
22. Percentage of SiteFM Work Orders Completed within 3 Days	9
23. Demographics and Length of Stay	10
<input type="checkbox"/> Appendix 1) Table – Census, Admissions & Discharges	
<input type="checkbox"/> Appendix 2) Table – Key Performance Indicators	
<input type="checkbox"/> Appendix 3) Table – Unusual Incident & Medication	
<input type="checkbox"/> Appendix 4) Table – Restraint & Seclusion	
<input type="checkbox"/> Appendix 5) Table – Demographic Information of Individuals in Care	
<input type="checkbox"/> Appendix 6) Table – Unusual Incidents by Unit	

Key Trends: Admission, Discharge, Transfer, Census, and Readmissions (1~6)

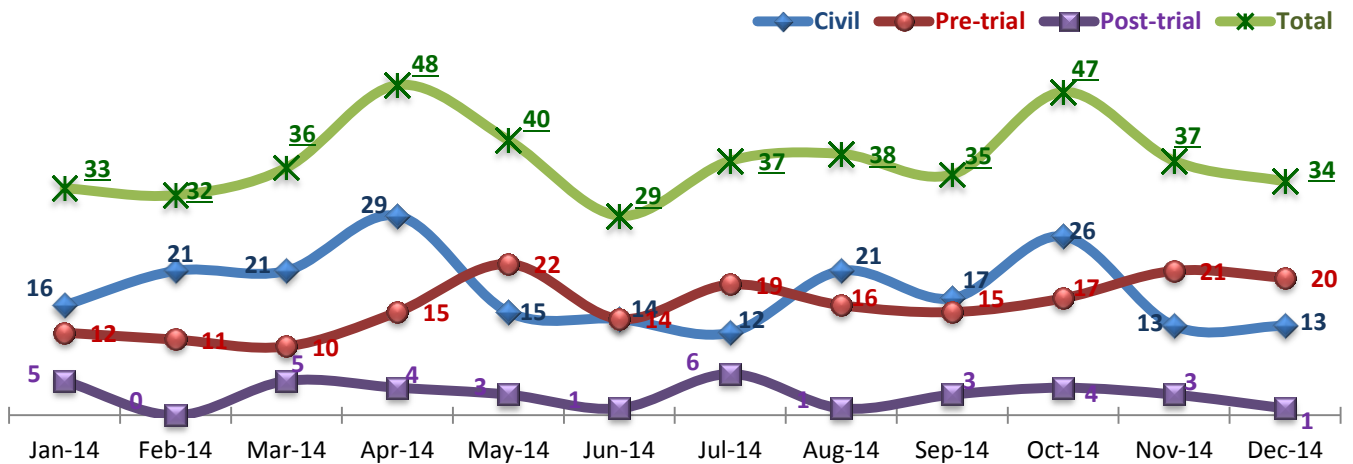
- In the month of December 2014, the number of admissions (43) increased from November (35) whereas the number of discharges (34) decreased from November (37), contributing to an increase of the average daily census (ADC) from 271 in November to 277 in December.
- The total number of admissions in CY2014 (463) is noticeably higher than that of CY2013 (425). Admissions exceeded discharges for both years but the difference between admissions and discharges in CY2014 (17) is larger than that of CY2013 (7), which resulted in an increase of daily census in CY2014.
- The number of pre-trial admissions for competency evaluation consistently recorded 20 or above in each month since June 2014 while the number of monthly civil admissions remained below 20.
- The number of emergency medical leaves (likely medical transfers) increased from 10 in November 2014 to 18 in December, above the monthly average (15) of CY2014.
- The 30-day readmission rate in FY2014 was 2.3%, which is far below the NPR (6.9%)¹. The readmission rate increased to 13% for the month of October 2014 as six (6) of the 47 discharges returned to the Hospital within 30 days. None was readmitted within 30 days from November discharges though.

1. Admissions to SEH



* Number of admissions to SEH inpatient program, including transfers from forensic outpatient to inpatient program.

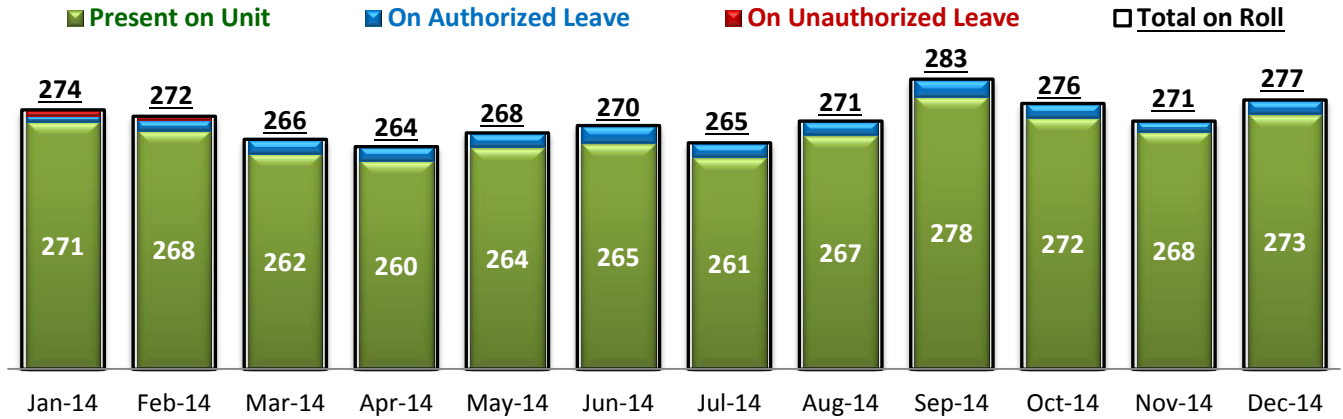
2. Discharges from SEH



* Number of discharges from SEH inpatient program, including transfers from inpatient to forensic outpatient program.

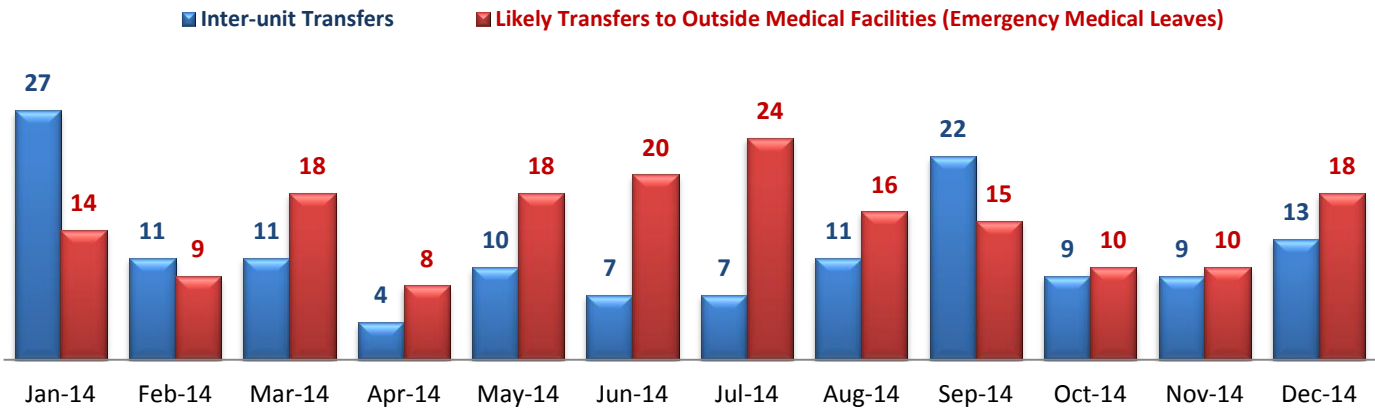
¹ NPR: National Public Rate as of June 2013 was published in November 2013 by National Association of State Mental Health Program Directors Research Institute (NRI), based on data collected from a number of state psychiatric hospitals nationwide.

3. Average Daily Census



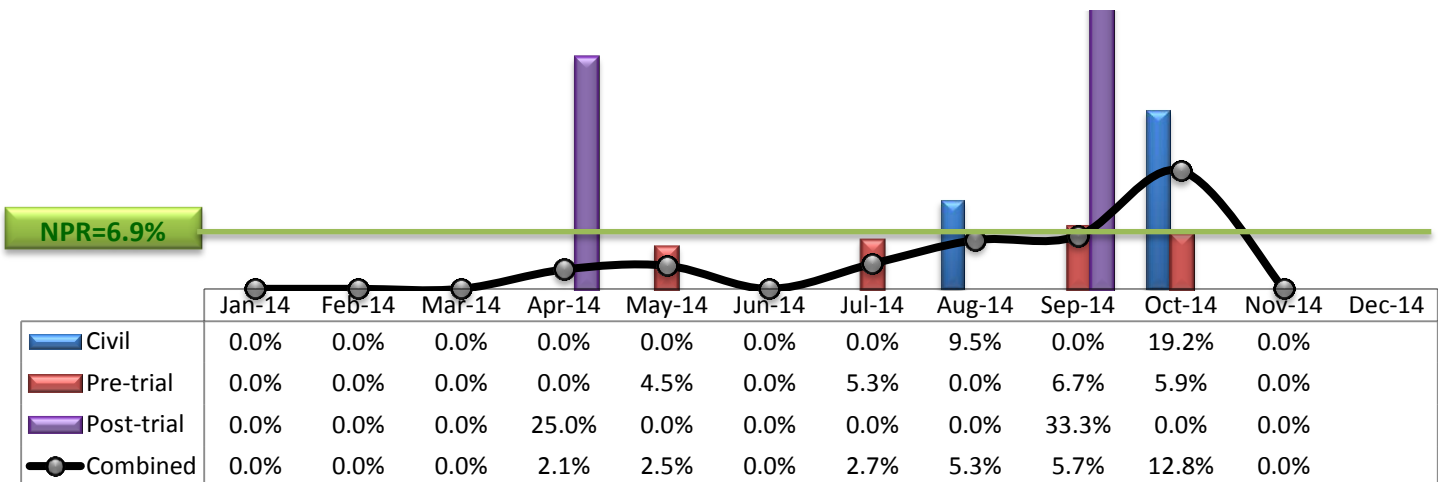
* Data above is the daily average number of individuals counted at 11:59 PM every day during each month.

4. Transfers



* Number of inter-unit transfers that occurred during month and number of emergency medical leaves that were initiated during month.

5. 30-Day Readmission Rate



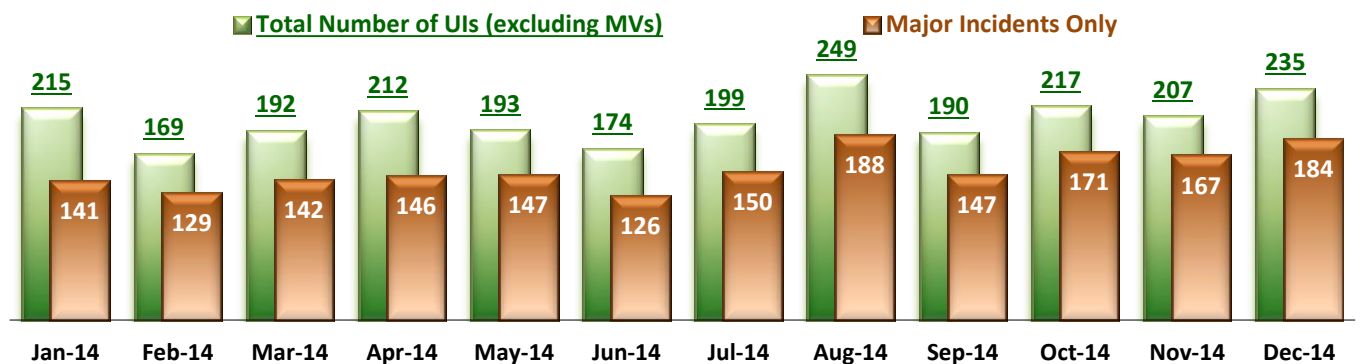
* Percent of discharges that returned to SEH within 30 days of discharges. It does not include those who may have been re-hospitalized at another psychiatric facility. This measure requires 30-day observation following discharge.

** The post-trial denominators (discharges) per month range only between one and six, making the monthly re-admission rate high when there is any. For example, in September 14, there were three post trial discharges, of which one (33%) was readmitted within 30 days.

Key Trends: Unusual Incidents (6~16)

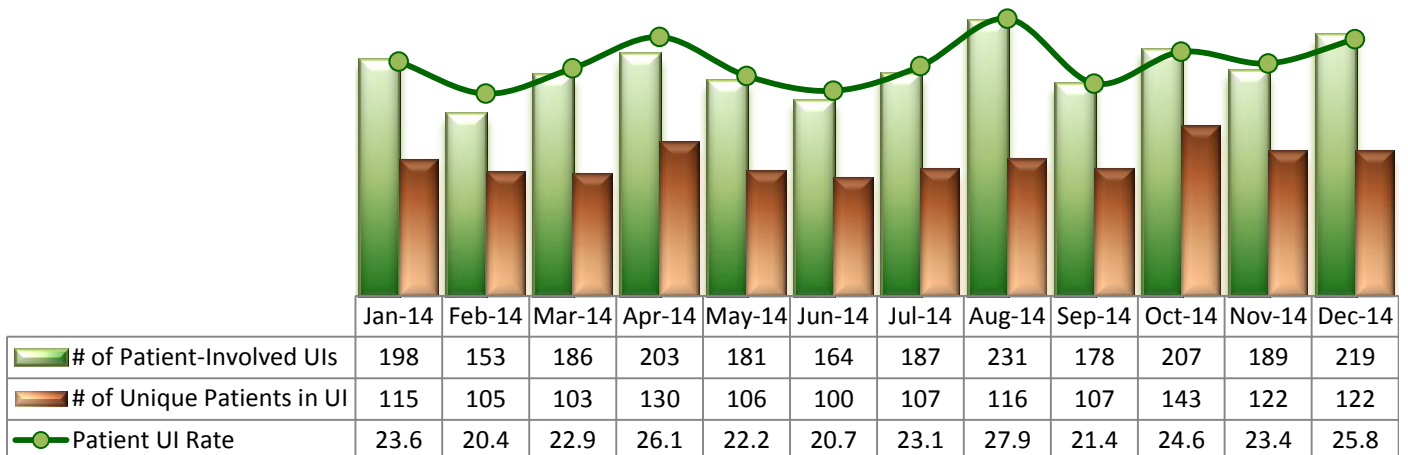
- The total number of unusual incidents (UIs) in December 2014 increased to 235, which is the second highest number in CY2014, and the patient UI rate also increased to 25.8 per 1000 patient days from 23.4 in November. The trend in the frequency of UIs has been mirroring the number of admissions throughout the year as a majority of UIs involve individuals in early stage of hospitalization.
- During CY2014, a total of 204 UIs were reported per month, which is a significant increase from CY2013, when we had a total of 184 UIs reported per month.
- While the frequency of physical assaults noticeably increased from 42 in November to 58 in December, a majority of them are at low (28) or medium (20) severity and those at high severity declined from 14 to 10.
- The number of incidents involving aggressive behaviors, psychiatric emergencies, or falls also increased but the number of injury incidents slightly declined in December 2014.
- The percentage of unique individuals secluded has been above NPR (2.4%) since August 2014 but the percentage of unique individuals restrained at SEH (1% in November 2014) remains far below the NPR (5.8%). Seclusion or restraint events frequently involve individuals in pre-trial legal status and the recent high number of pre-trial admissions, and their frequent medication refusals may have contributed to this trend: 50% of seclusion or restraint events between June and December 2014 involved pre-trial admissions while those in pre-trial legal status constitutes only about 25% on a given day. Both the seclusion hours rate and the restraint hours rate at SEH (below 0.1 per 1000 patient hours) are much lower than NPR (0.44 and 0.71, respectively).
- There have been no elopements since July 2014 (for six months) and the elopement rate in CY2014 is 0.06 per 1000 patient days, which is much lower than the national average (NPR 0.13).

6. Unusual Incidents



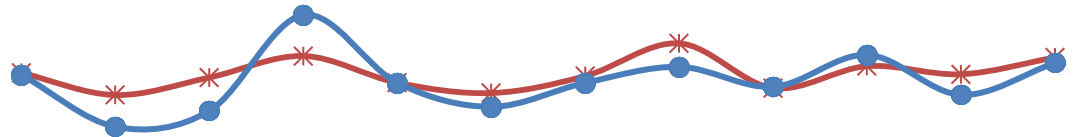
* A medication or vital sign refusal is no longer a UI since May 2014 and data above prior to May 2014 also excludes those incidents.

7. Patient-Involved Unusual Incidents



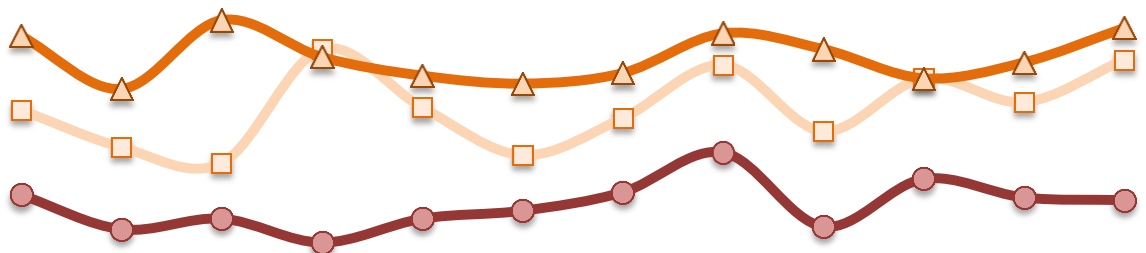
* The patient UI rate is the number of patient-involved unusual incidents reported for every 1000 inpatient days.

8. Admissions vs. Patient UI Rate



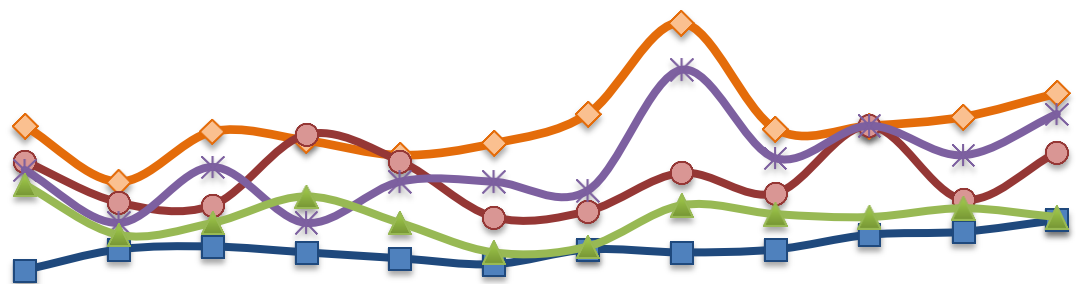
	Jan-14	Feb-14	Mar-14	Apr-14	May-14	Jun-14	Jul-14	Aug-14	Sep-14	Oct-14	Nov-14	Dec-14
✱ Patient UI Rate	23.6	20.4	22.9	26.1	22.2	20.7	23.1	27.9	21.4	24.6	23.4	25.8
● Admission	40	27	31	55	38	32	38	42	37	45	35	43

9. Unusual Incidents by Severity



	Jan-14	Feb-14	Mar-14	Apr-14	May-14	Jun-14	Jul-14	Aug-14	Sep-14	Oct-14	Nov-14	Dec-14
□ 1) Low	73	59	53	96	74	56	70	90	65	85	76	92
△ 2) Medium	101	81	107	93	86	83	87	102	96	85	91	104
● 3) High	41	28	32	23	32	35	42	57	29	47	40	39
◇ 4) Catstrp	0	1	0	0	1	0	0	0	0	0	0	0
Total UI	215	169	192	212	193	174	199	249	190	217	207	235

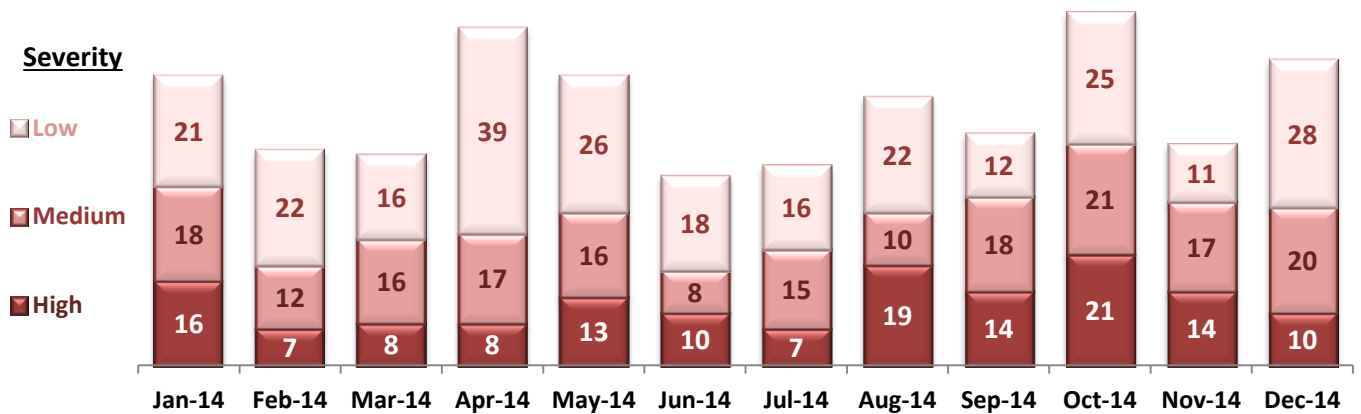
10. Selected Types of Incidents



	Jan-14	Feb-14	Mar-14	Apr-14	May-14	Jun-14	Jul-14	Aug-14	Sep-14	Oct-14	Nov-14	Dec-14
◇ Aggressive Behavior	67	48	65	62	57	61	71	102	66	67	70	78
● Physical Assault	55	41	40	64	55	36	38	51	44	67	42	58
✱ Pysch Emerg.	52	34	53	34	48	48	45	86	56	67	57	71
■ Fall	18	25	26	24	22	20	25	24	25	30	31	35
▲ Injury	47	30	34	43	34	24	26	40	37	36	39	36

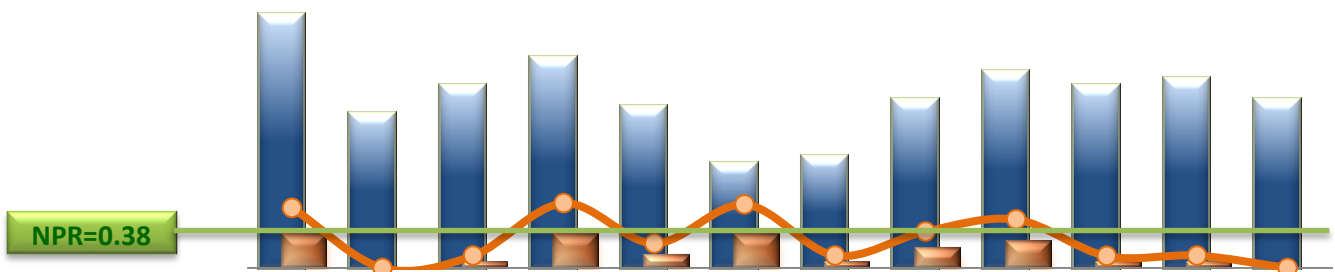
* These are incident types that are frequently reported. Some incidents may be counted in multiple categories. For example, a physical assault incident that accompanied psychiatric emergency and injury is counted under psychiatric emergency and injury as well as under physical assault. Injury is broadly defined to include any type of injuries regardless of the cause or severity level.

11. Physical Assaults by Severity



* Any physical assault that accompanies a code 13 or results in extensive injury needing off-unit treatment or transfer to ER is considered to be high severity, any physical assault that causes a minor injury that can be treated on unit is considered to be medium severity, and physical assault events that result in no injury are considered to be low severity.

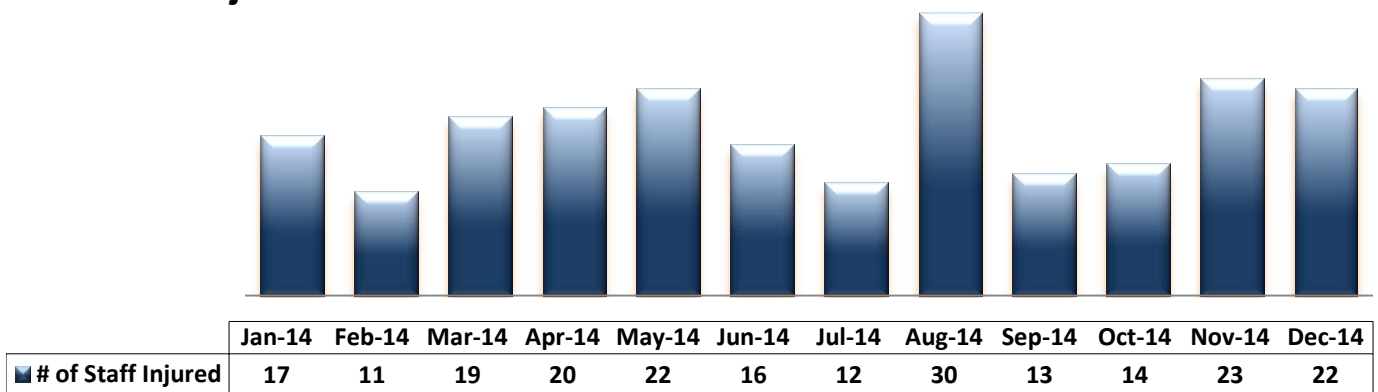
12. Patient Injuries



	Jan-14	Feb-14	Mar-14	Apr-14	May-14	Jun-14	Jul-14	Aug-14	Sep-14	Oct-14	Nov-14	Dec-14
Total Pts Injured	36	22	26	30	23	15	16	24	28	26	27	24
Major Pt Injuries*	5	0	1	5	2	5	1	3	4	1	1	0
Patient Injury Rate	0.60	0.00	0.12	0.64	0.24	0.63	0.12	0.36	0.48	0.12	0.12	0.00

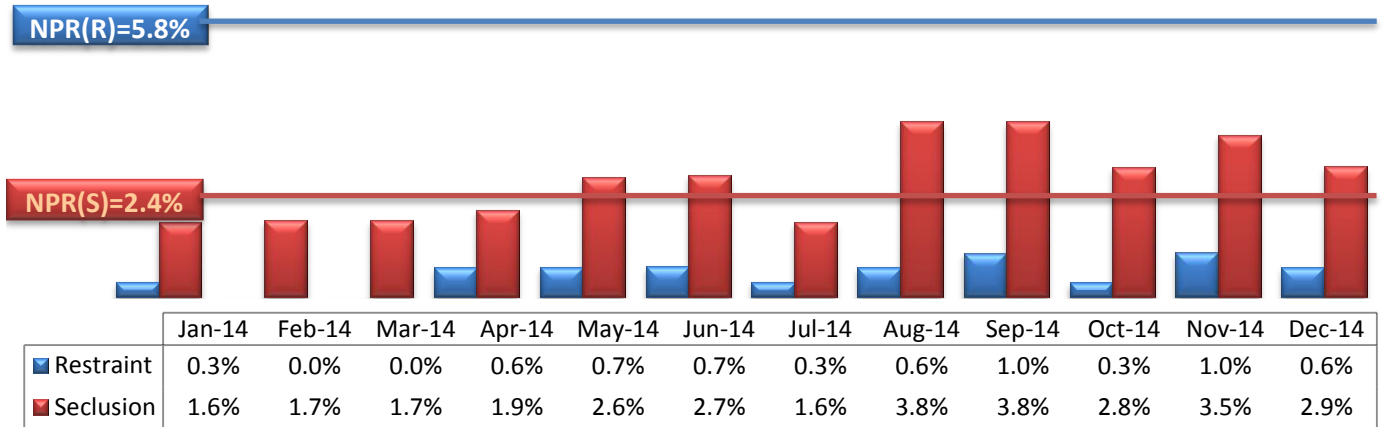
* Injury is broadly defined to include any type of injuries regardless of the cause or severity level. The total number of patients injured represents all of the reported injuries including minor injuries treated with first aid alone. However, the patient injury rate considers only the number of patient injuries that required beyond first-aid level treatment based on the NRI definition and the patient injury rate is the number of 'major' patient injuries per every 1000 inpatient days

13. Staff Injuries



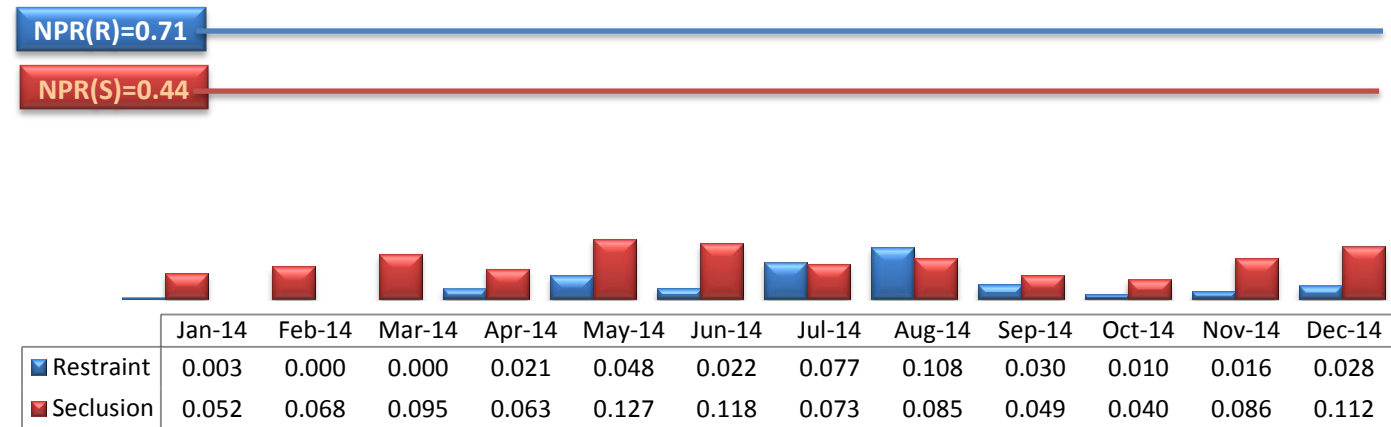
* Injury is broadly defined to include any type of injuries regardless of the cause or severity level. The total number of staff injured represents all of the reported staff injuries including minor injuries treated with first aid alone.

14. Percent of Patients Restrained or Secluded



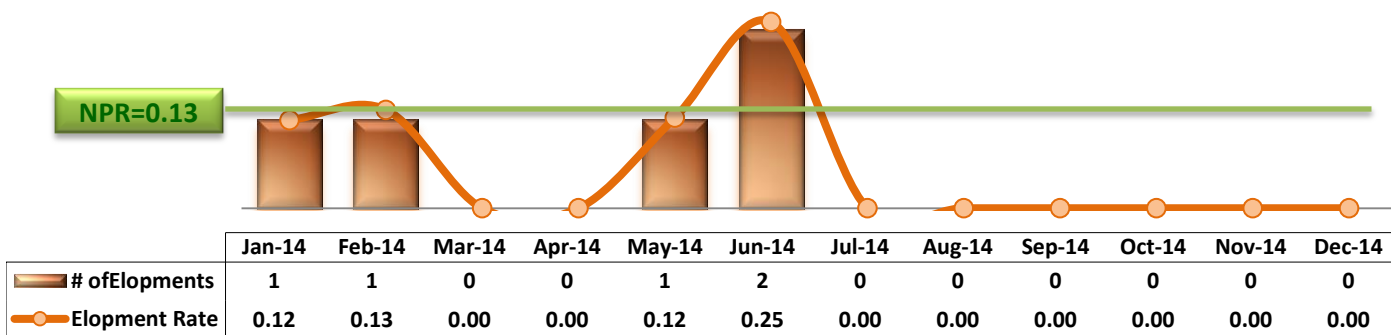
* Percent of unique patients who were restrained at least once and percent of unique patients who were secluded at least once. The denominator includes all individuals who were served in care >=1 day during month.

15. Restraint Hours Rate & Seclusion Hours Rate



* Restraint/Seclusion Hours Rate: Number of hours spent in restraint/seclusion for every 1000 inpatient hours.

16. Elopements

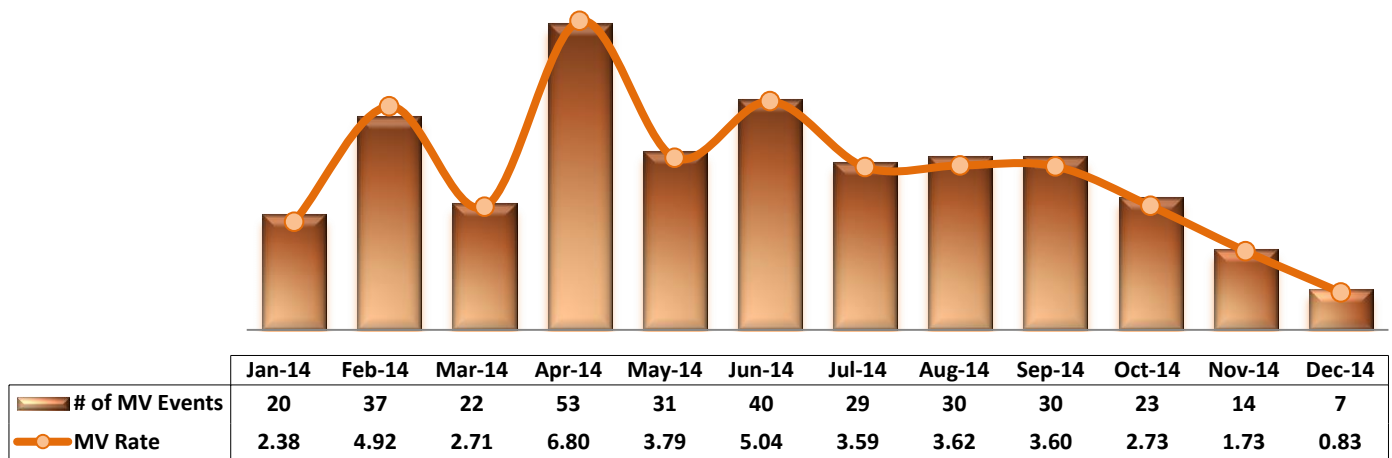


* It counts the total number of unauthorized leaves for any duration that were initiated during month and were recorded in Avatar. The elopement rate is the number of those unauthorized leaves that occurred for every 1000 inpatient days.

Key Trends: Medication Documentation, Medication Variance, ADR, and STAT (17~21)

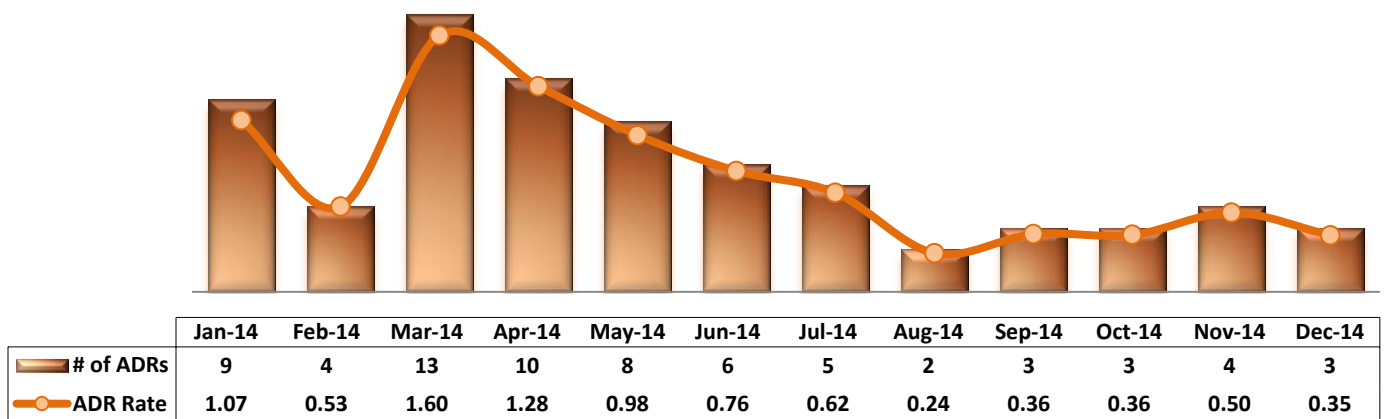
- The number of reported MVs continued to decline for several months, reaching its lowest number (7) as of December since December 2012. It is not clear, though, if this decrease reflects an actual decrease of MV events or a decrease of reporting.
- In December 2014, the number of reported ADRs also continued to be low at three (3).
- The rate of missing documentation on medication administration has remained around 0.6% over the past few months.
- The medication refusal rate in December 2014 (7.1%) is lower than that of November (7.5%) but is still the second highest since this data was available in January 2010.
- The number of STAT events (74) and the number of unique individuals involved (33) in one or more STAT events in December 2014 are higher than those in November (68 and 28, respectively).

17. Reported Medication Variance Events



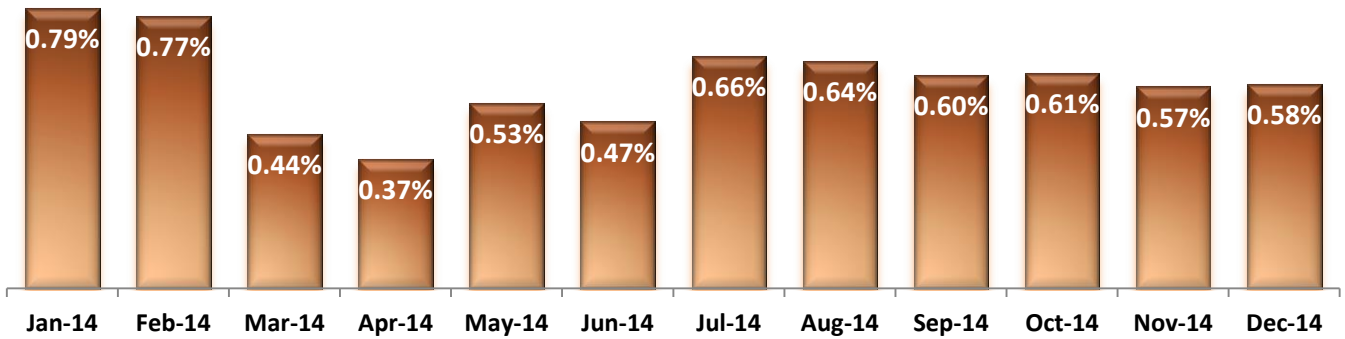
* MV Rate: Number of reported medication variance events that occurred for every 1000 inpatient days.

18. Reported Adverse Drug Reactions

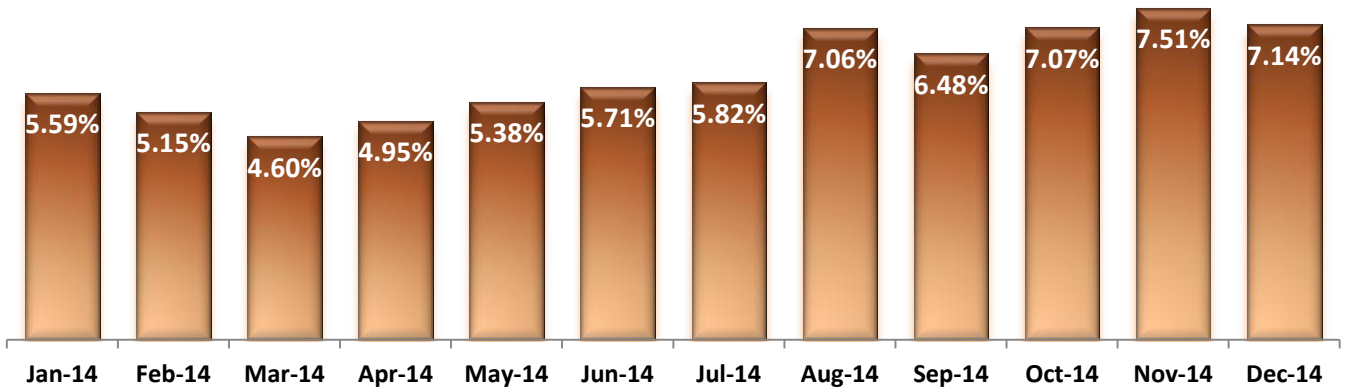


* ADR Rate: Number of reported adverse drug reaction events that occurred for every 1000 inpatient days.

19. Percent of Missing Documentation on Med-Administration

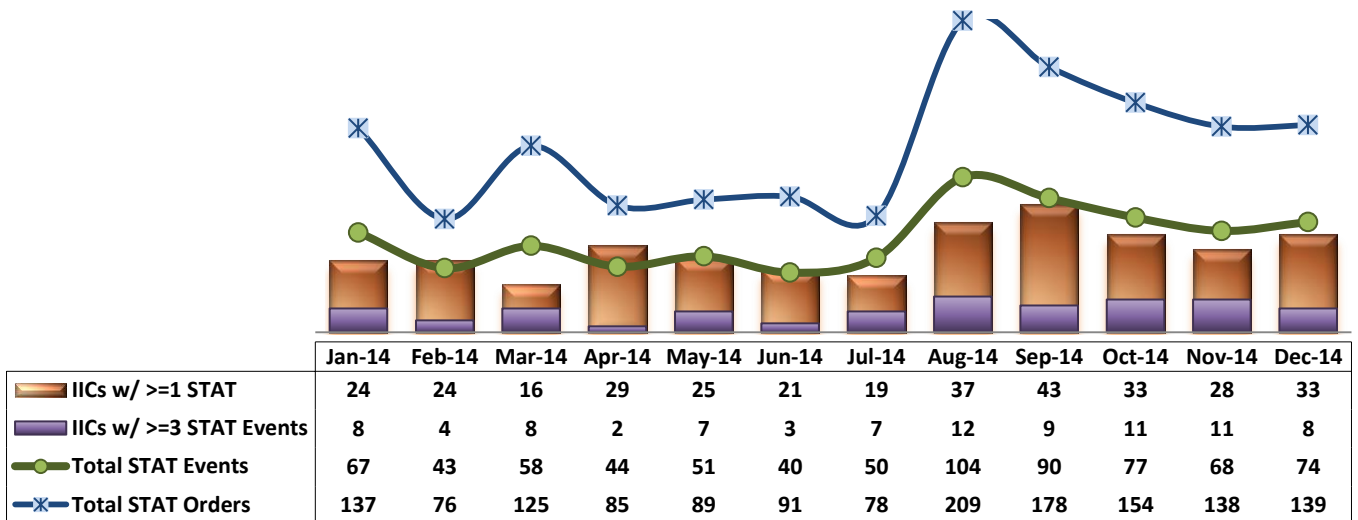


20. Medication Refusal Rate*



* Medication Refusal Rate: the number of refused medication doses divided by the total number of doses scheduled for administration.

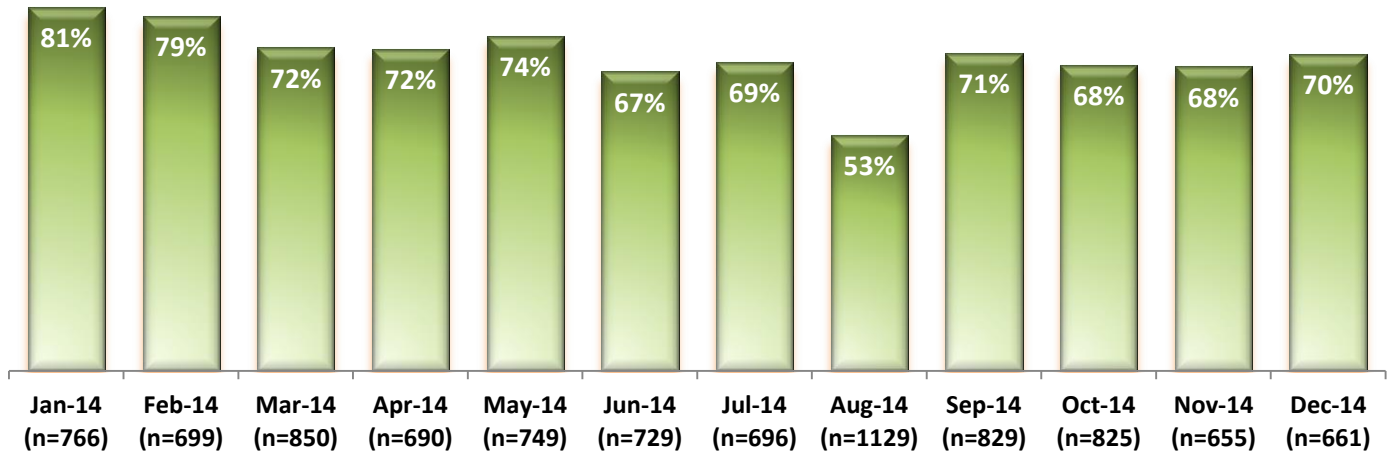
21. Number of STAT Events and Individuals Involved



Key Trends: Environment of Care (22)

- During CY 2014, on average, the Hospital received a total of 773 work orders per month (or 25 per day) through SiteFM. Of those, 70% were completed within 3 days.
- In the months of December 2014, a total of 661 SiteFM work orders were received and of those, 70% were completed within 3 days.

22. Percentage of SiteFM Work Orders Completed within 3 Days



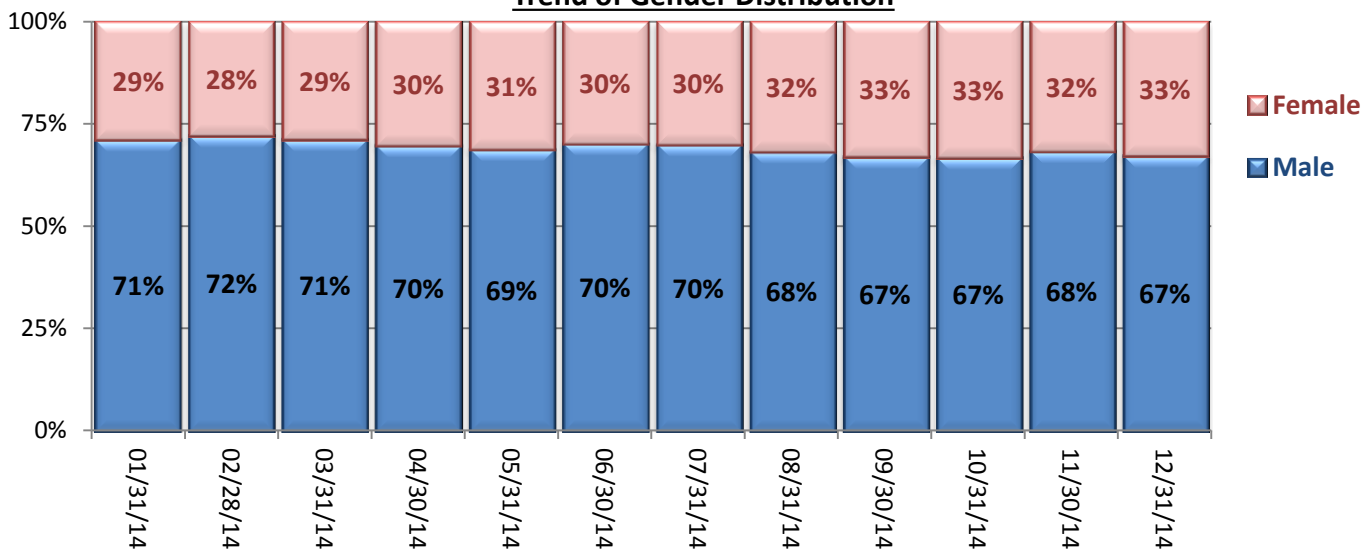
* This data has been analyzed for the first time as of early December 2014.

Key Trends: Demographics, Legal Status, and Length of Stay (23)

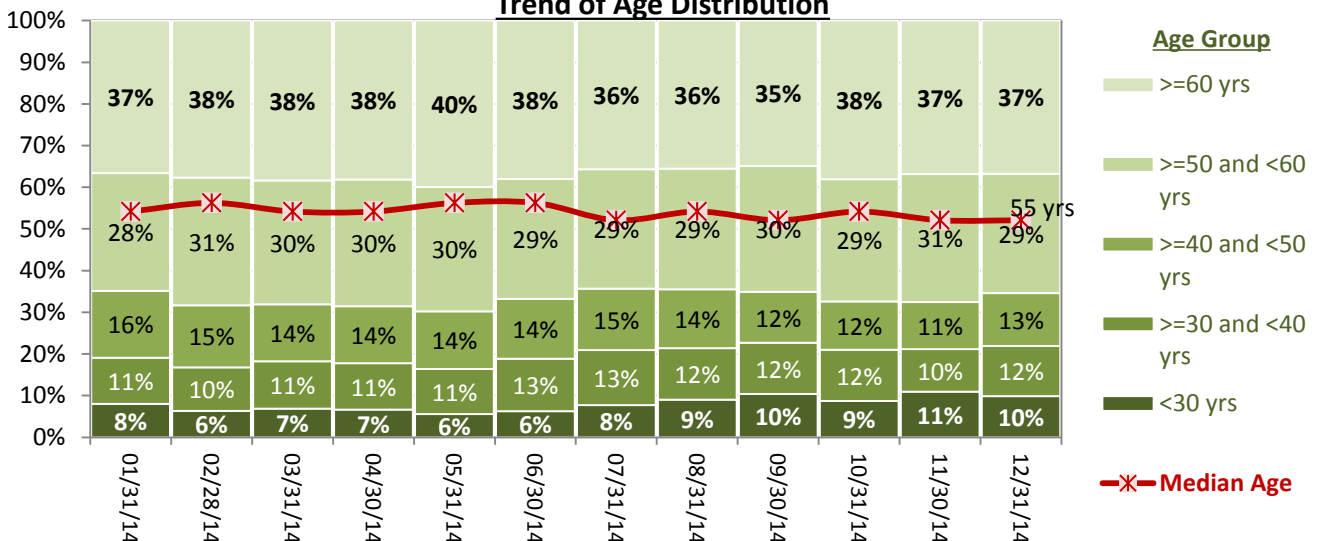
- The proportion of females gradually increased throughout the year. As of October 2013, 26% of individuals in our care were female but the proportion of females increased to 33% by September 2014.
- About two out of three individuals in care are 50 years or older. The median age is 55 years old as of December 31, 2014.
- The number of pre-trial admissions significantly increased during the last quarter of FY2014 and the proportion of pre-trial population increased accordingly: from 15% as of March 31, 2014 to 26% in October 2014, which is the highest level since PRISM tracked this data since December 2010. The number of pre-trial admissions continued to be high in FY2015 and they composed 25% of all individuals in care as of December 31, 2014.
- The median length of stay (LOS) of individuals remaining in care decreased gradually since February 2014, falling to the lowest level (362 days or 12 months) as of December 31, 2014. This constant decrease of the median LOS is attributed in part to a large number of admissions in 2014, which triggered an increase in the proportion of recent admissions among the total population in care. Consequently, more individuals in care have shorter LOS than before, lowering the median LOS of all individuals in care.

23. Demographics and Length of Stay

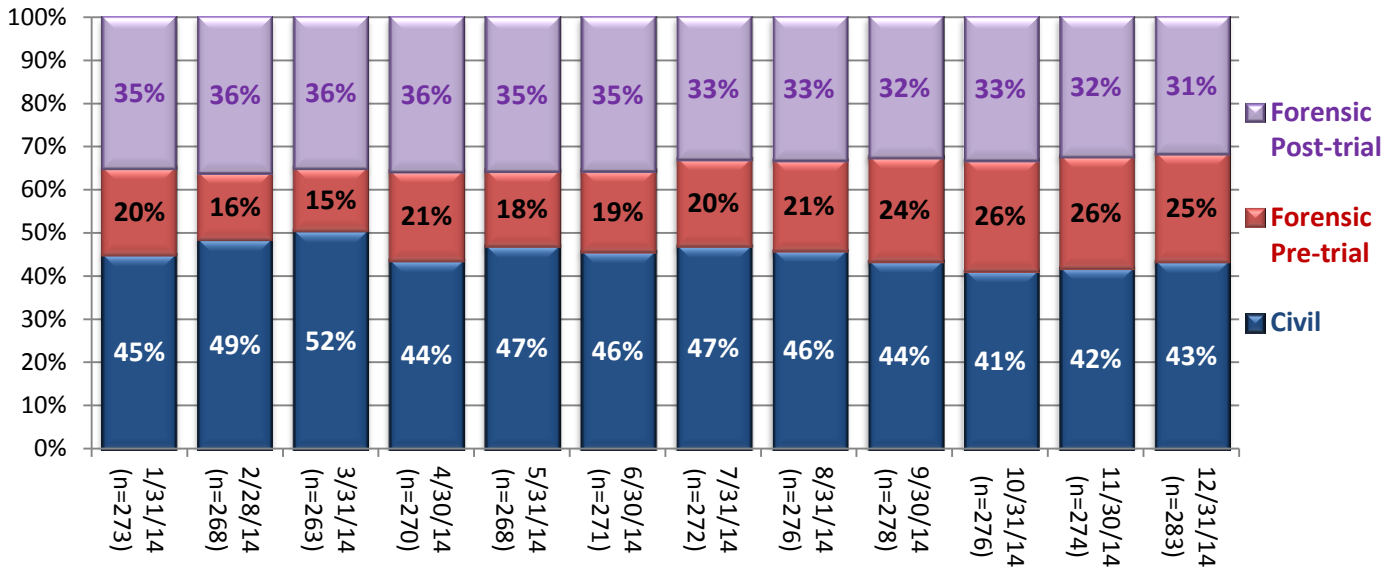
Trend of Gender Distribution



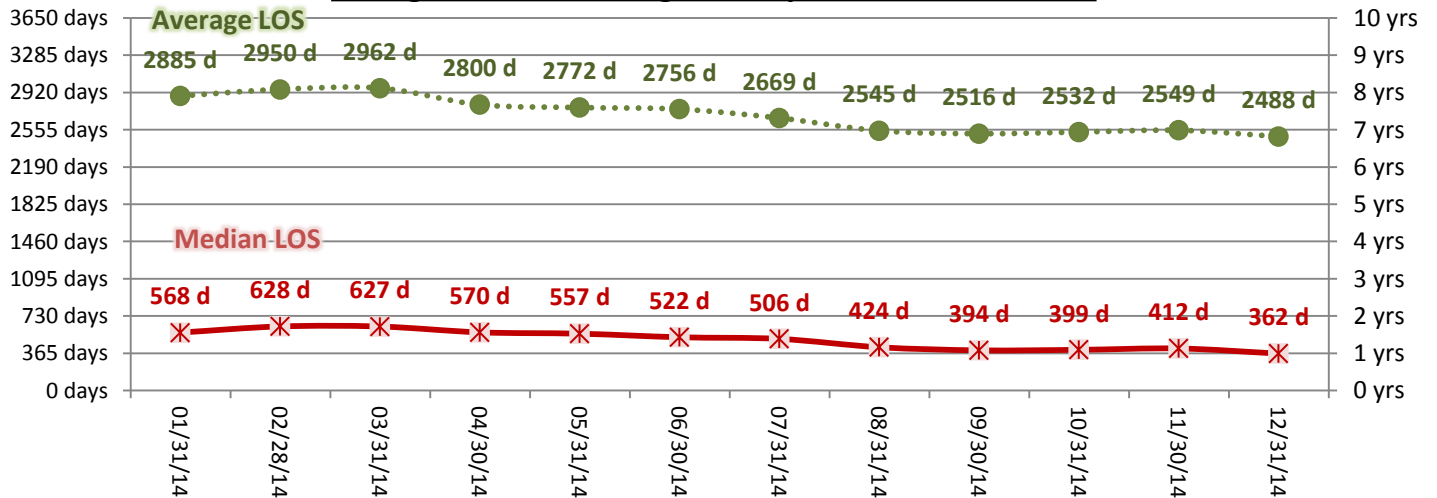
Trend of Age Distribution



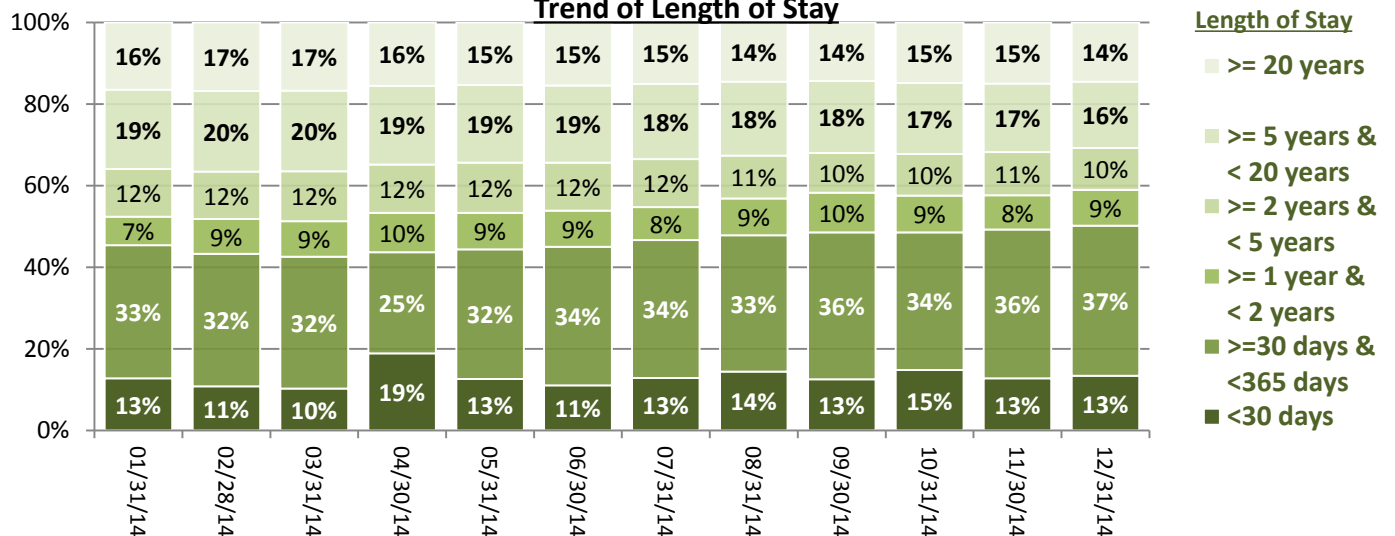
Trend of Legal Status Distribution



Average and Median Length of Stay for Individuals in Care



Trend of Length of Stay



Performance Related Information for Staff & Managers

1. Census, Admissions, Discharges & Transfers

Data Source: Avatar

Updated as of 01/15/15

Category	Jan-14	Feb-14	Mar-14	Apr-14	May-14	Jun-14	Jul-14	Aug-14	Sep-14	Oct-14	Nov-14	Dec-14	Monthly Average	Total (12mths)	Figure	
Admissions	Civil	23	15	16	17	20	10	13	18	10	15	12	18	16	187	Figure 1
	Pre-trial	16	11	11	34	16	20	25	20	25	26	23	23	21	250	
	Post-trial	1	1	4	4	2	2	0	4	2	4	0	2	2	26	
	Total	40	27	31	55	38	32	38	42	37	45	35	43	39	463	
Discharges	Civil	16	21	21	29	15	14	12	21	17	26	13	13	18	218	Figure 2
	Pre-trial	12	11	10	15	22	14	19	16	15	17	21	20	16	192	
	Post-trial	5	0	5	4	3	1	6	1	3	4	3	1	3	36	
	Total	33	32	36	48	40	29	37	38	35	47	37	34	37	446	
Net Increase During Month	Civil	7	-6	-5	-12	5	-4	1	-3	-7	-11	-1	5		-31	
	Pre-trial	4	0	1	19	-6	6	6	4	10	9	2	3		58	
	Post-trial	-4	1	-1	0	-1	1	-6	3	-1	0	-3	1		-10	
	Total	7	-5	-5	7	-2	3	1	4	2	-2	-2	9		17	
All Individuals on Roll at End of Month	273	268	263	270	268	271	272	276	278	276	274	283	273			
a. Present on Unit	269	263	256	268	260	267	271	270	275	272	270	281	269			
b. On AL	3	5	7	2	8	4	1	6	3	4	4	2	4			
c. On UL	1	0	0	0	0	0	0	0	0	0	0	0	0			
All Individuals on Roll: <u>Daily</u> Average during Month*	274	272	266	264	268	270	265	271	283	276	271	277	271			
a. Present on Unit	271	268	262	260	264	265	261	267	278	272	268	273	267		Figure 3	
b. On AL	2	3	4	4	4	5	4	4	5	4	3	4	4			
c. On UL	2	1	0	0	0	0	0	0	0	0	0	0	0			
Patient Days**	8394	7514	8115	7789	8171	7941	8084	8277	8326	8422	8078	8472	8132	97583		
Inter-Unit Transfers during Month	27	11	11	4	10	7	7	11	22	9	9	13	12	141	Figure 4	
Medical Leaves Initiated during Month	Emergency	14	9	18	8	18	20	24	16	15	10	10	18	15	180	
	Non-Emer	25	32	25	30	34	81	88	67	68	62	71	61	54	644	
	Total	39	41	43	38	52	101	112	83	83	72	81	79	69	824	
Non-Medical Leaves Initiated during Month	142	141	175	147	230	439	430	386	397	431	390	393	308	3701		
UL Initiated during Month	1	1	0	0	1	2	0	0	0	0	0	0	0	5		
Total Unique Patients Served during Month	306	300	299	315	306	300	305	312	312	318	310	315	308			
30 Day Readmission ***	Civil	0	0	0	0	0	0	2	0	5	0		1	7		
	Pre-trial	0	0	0	0	1	0	1	0	1	0		0	4		
	Post-trial	0	0	0	1	0	0	0	0	1	0		0	2		
	Total	0	0	0	1	1	0	1	2	2	6	0	1	13		

* This is the average number of individuals served on a given day for the respective month. Due to rounding from average calculation, numbers from its subcategories a, b, & c may not add up to the total number on this row.

** It counts the number of patients who are present on the unit and excludes those on authorized or unauthorized leave at 11:59pm on a given day.

*** Number of patients returning within 30 days of discharges that occurred during month.

Performance Related Information for Staff & Managers

2. Key Performance Indicators

Data Source: UI DB, MV DB, ADR DB, Restraint/Seclusion Log, and Avatar

Updated as of 01/15/15

Category	Jan-14	Feb-14	Mar-14	Apr-14	May-14	Jun-14	Jul-14	Aug-14	Sep-14	Oct-14	Nov-14	Dec-14	Monthly Average	NPR* (Jun-13)	Figure
30 Day Readmit (Discharge Cohort)**	Civil	0.0%	0.0%	0.0%	0.0%	0.0%	0.0%	9.5%	0.0%	19.2%	0.0%		3.5%		Figure 5
	Pre-trial	0.0%	0.0%	0.0%	0.0%	4.5%	0.0%	5.3%	0.0%	6.7%	5.9%	0.0%	2.3%		
	Post-trial	0.0%	N/A	0.0%	25.0%	0.0%	0.0%	0.0%	0.0%	33.3%	0.0%	0.0%	6.1%		
	Combined	0.0%	0.0%	0.0%	2.1%	2.5%	0.0%	2.7%	5.3%	5.7%	12.8%	0.0%	3.2%	6.9%	
Number of Unusual Incidents*	215	169	192	212	193	174	199	249	190	217	207	235	204		Figure 6
Patient Unusual Incident Rate	23.6	20.4	22.9	26.1	22.2	20.7	23.1	27.9	21.4	24.6	23.4	25.8	23.5		Figure 7
UI by Severity	Catastrophe	0	1	0	0	1	0	0	0	0	0	0	0		Figure 9
	High	41	28	32	23	32	35	42	57	29	47	40	39	37	
	Medium	101	81	107	93	86	83	87	102	96	85	91	104	93	
	Low	73	59	53	96	74	56	70	90	65	85	76	92	74	
Physical Assault Incident Rate	6.6	5.5	4.9	8.2	6.7	4.5	4.7	6.2	5.3	8.0	5.2	6.8	6.1		
Selected Types of Incidents	Physical Assault	55	41	40	64	55	36	38	51	44	67	42	58	49	Figure 10
	Aggressive Behav.	67	48	65	62	57	61	71	102	66	67	70	78	68	
	Psych Emergency	52	34	53	34	48	48	45	86	56	67	57	71	54	
	Fall	18	25	26	24	22	20	25	24	25	30	31	35	25	
	Injury	47	30	34	43	34	24	26	40	37	36	39	36	36	
Physical Assaults by Severity	High	16	7	8	8	13	10	7	19	14	21	14	10	13	Figure 11
	Medium	18	12	16	17	16	8	15	10	18	21	17	20	16	
	Low	21	22	16	39	26	18	16	22	12	25	11	28	21	
Patient Injury Rate***	0.60	0.00	0.12	0.64	0.24	0.63	0.12	0.36	0.48	0.12	0.12	0.00	0.29	0.38	Figure 12
Patients with Major Injuries***	5	0	1	5	2	5	1	3	4	1	1	0	2		
Total Patients Injured***	36	22	26	30	23	15	16	24	28	26	27	24	25		
Total Staff Injured***	17	11	19	20	22	16	12	30	13	14	23	22	18		Figure 13
Elopement Rate	0.12	0.13	0.00	0.00	0.12	0.25	0.00	0.00	0.00	0.00	0.00	0.00	0.06	0.13	Figure 16
Medication Variance Rate	2.38	4.92	2.71	6.80	3.79	5.04	3.59	3.62	3.60	2.73	1.73	0.83	3.44		Figure 17
Adverse Drug Reaction Rate	1.07	0.53	1.60	1.28	0.98	0.76	0.62	0.24	0.36	0.36	0.50	0.35	0.72		Figure 18
Missing Med-Admin Documentation	0.79%	0.77%	0.44%	0.37%	0.53%	0.47%	0.66%	0.64%	0.60%	0.61%	0.57%	0.58%	0.59%		Figure 19
Percent of Medication Refusal	5.59%	5.15%	4.60%	4.95%	5.38%	5.71%	5.82%	7.06%	6.48%	7.07%	7.51%	7.14%	6.04%		Figure 20
Percent of Patients Restrained	0.3%	0.0%	0.0%	0.6%	0.7%	0.7%	0.3%	0.6%	1.0%	0.3%	1.0%	0.6%	0.5%	5.8%	Figure 14
Percent of Patients Secluded	1.6%	1.7%	1.7%	1.9%	2.6%	2.7%	1.6%	3.8%	3.8%	2.8%	3.5%	2.9%	2.6%	2.4%	
Restraint Hours Rate	0.003	0.000	0.000	0.021	0.048	0.022	0.077	0.108	0.030	0.010	0.016	0.028	0.031	0.71	Figure 15
Seclusion Hours Rate	0.052	0.068	0.095	0.063	0.127	0.118	0.073	0.085	0.049	0.040	0.086	0.112	0.081	0.44	
SiteFM Work Orders Completed within 3 days	81%	79%	72%	72%	74%	67%	69%	53%	71%	68%	68%	70%	70%		Figure 22
Total SiteFM Work Orders	620	552	612	494	558	486	479	593	587	562	444	466	538	773	

* National Public Rate, NASMHPD Research Institute, National Research Institute (NRI), Data as of June 2013, Published in November 2013.

** Percentage of patients returning within 30 days of discharges that occurred during month

*** Refer to the next page [UI & Medication]

Performance Related Information for Staff & Managers

3. Unusual Incident & Medication

Data Source: UI DB, MV DB, ADR DB, and Avatar

Updated as of 01/15/15

Category	Jan-14	Feb-14	Mar-14	Apr-14	May-14	Jun-14	Jul-14	Aug-14	Sep-14	Oct-14	Nov-14	Dec-14	Monthly Average	Total (12mths)	NPR* (Jun-13)
Unusual Incidents (excluding MV)**															
Total UIs	215	169	192	212	193	174	199	249	190	217	207	235	204	2452	
Major UIs Only	141	129	142	146	147	126	150	188	147	171	167	184	153	1838	
Pt Involved UI Only	198	153	186	203	181	164	187	231	178	207	189	219	191	2296	
Patient UI Rate	23.6	20.4	22.9	26.1	22.2	20.7	23.1	27.9	21.4	24.6	23.4	25.8	23.5		
Unique Pts Involved in UI	115	105	103	130	106	100	107	116	107	143	122	122	115	1376	
Selected Types of Incidents															
Physical Assault	55	41	40	64	55	36	38	51	44	67	42	58	49	591	
Aggressive Behavior	67	48	65	62	57	61	71	102	66	67	70	78	68	814	
Psych Emergency	52	34	53	34	48	48	45	86	56	67	57	71	54	651	
Fall	18	25	26	24	22	20	25	24	25	30	31	35	25	305	
Injury	47	30	34	43	34	24	26	40	37	36	39	36	36	426	
Physical Assault Rate	6.6	5.5	4.9	8.2	6.7	4.5	4.7	6.2	5.3	8.0	5.2	6.8	6.1		
UI by Severity															
Catastrophe	0	1	0	0	1	0	0	0	0	0	0	0	0	2	
High	41	28	32	23	32	35	42	57	29	47	40	39	37	445	
Medium	101	81	107	93	86	83	87	102	96	85	91	104	93	1116	
Low	73	59	53	96	74	56	70	90	65	85	76	92	74	889	
Physical Assaults by Severity															
High	16	7	8	8	13	10	7	19	14	21	14	10	13	147	
Medium	18	12	16	17	16	8	15	10	18	21	17	20	16	188	
Low	21	22	16	39	26	18	16	22	12	25	11	28	21	256	
Total Patients Injured***	36	22	26	30	23	15	16	24	28	26	27	24	25	297	
Patients with Major Injuries***	5	0	1	5	2	5	1	3	4	1	1	0	2	28	
Patient Injury Rate***	0.60	0.00	0.12	0.64	0.24	0.63	0.12	0.36	0.48	0.12	0.12	0.00	0.29		0.38
Total Staff Injured**	17	11	19	20	22	16	12	30	13	14	23	22	18		
Total UIs Documented in Avatar	1	1	0	0	1	2	0	0	0	0	0	0	0	5	
Elopement Rate	0.12	0.13	0.00	0.00	0.12	0.25	0.00	0.00	0.00	0.00	0.00	0.00	0.06		0.13
Med Variance (MV) Reports**	20	37	22	53	31	40	29	30	30	23	14	7	28	336	
MV Rate	2.38	4.92	2.71	6.80	3.79	5.04	3.59	3.62	3.60	2.73	1.73	0.83	3.44		
Adverse Drug Reactions Reports	9	4	13	10	8	6	5	2	3	3	4	3	6	70	
ADR Rate	1.07	0.53	1.60	1.28	0.98	0.76	0.62	0.24	0.36	0.36	0.50	0.35	0.72		
Total Med Administrations Scheduled	108474	98616	107326	104201	108187	104448	107179	105835	103590	105994	104198	107578		1265626	
Total Missing Documentations	860	759	469	381	568	493	704	680	626	647	595	622		7404	
Percent of Missing Documentation	0.79%	0.77%	0.44%	0.37%	0.53%	0.47%	0.66%	0.64%	0.60%	0.61%	0.57%	0.58%		0.59%	
Total Medication Doses Refused	6059	5080	4937	5163	5823	5969	6239	7472	6712	7493	7823	7676		76446	
Percent of Medication Refusal	5.59%	5.15%	4.60%	4.95%	5.38%	5.71%	5.82%	7.06%	6.48%	7.07%	7.51%	7.14%		6.04%	
Total STAT Orders	137	76	125	85	89	91	78	209	178	154	138	139	125		Figure 21
Total STAT Events****	67	43	58	44	51	40	50	104	90	77	68	74	64		
Total Individuals Involved >=1 STAT	24	24	16	29	25	21	19	37	43	33	28	33	28		
Total Patients with >=3 STAT Events	8	4	8	2	7	3	7	12	9	11	11	8	8		

* National Public Rate, NASMHPD Research Institute, National Research Institute (NRI), Data as of June 2013, Published in November 2013.

** Numbers may change if any additional UI report is made after the data run date from UI database (around the 15th of the following month); According to the revised UI policy as of November 4, 2013, a medication variance (MV) incident became no longer considered to be an unusual incident, and a medication or vital sign refusal incident is not longer an UI as of May 2014. UI data for the past 12 months in this report has been updated to reflect this change and reanalyzed in order to show the UI trend in consistent logic.

*** Injury is broadly defined to include any type of injuries regardless of the cause or severity level. The total number of patients injured represents all of the reported injuries including minor injuries treated with first aid alone. However, the patient injury rate considers only the number of patient injuries that required beyond first-aid level treatment based on the NRI definition and the patient injury rate is the number of 'major' patient injuries per every 1000 inpatient days

**** One STAT event may involve more than one STAT order for the same patient. Any orders placed within 20 minute timeframe are considered to belong to one STAT event.

Performance Related Information for Staff & Managers

4. Restraint & Seclusion

Data Source: Restraint/Seclusion Log and UI DB (for # of total events and patients) and Avatar (for patient days/hours)

Updated as of 01/15/15

Category	Jan-14	Feb-14	Mar-14	Apr-14	May-14	Jun-14	Jul-14	Aug-14	Sep-14	Oct-14	Nov-14	Dec-14	Monthly Average	Total (12mths)	NPR* (Jun-13)
Number of Restraint Events	1	0	0	2	6	4	7	7	6	1	3	6	3.6	43	
Number of Unique Patients Restrained	1	0	0	2	2	2	1	2	3	1	3	2	1.6		
Percentage of Patients Restrained	0.3%	0.0%	0.0%	0.6%	0.7%	0.7%	0.3%	0.6%	1.0%	0.3%	1.0%	0.6%	0.5%		5.8%
Total Restraint Hours (h:mm)	0:35	0:00	0:00	4:00	9:30	4:16	15:00	21:25	6:00	2:00	3:06	5:38	5:57	71:30	
Restraint Hours Rate	0.003	0.000	0.000	0.021	0.048	0.022	0.077	0.108	0.030	0.010	0.016	0.028	0.031		0.71
Number of Seclusion Events	6	13	15	10	20	22	14	21	17	12	19	14	15.3	183	
Number of Unique Patients Secluded	5	5	5	6	8	8	5	12	12	9	11	9	7.9		
Percentage of Patients Secluded	1.6%	1.7%	1.7%	1.9%	2.6%	2.7%	1.6%	3.8%	3.8%	2.8%	3.5%	2.9%	2.6%		2.4%
Total Seclusion Hours (h:mm)	10:34	12:15	18:27	11:47	24:49	22:32	14:14	16:51	9:52	8:01	16:36	22:48	15:43	188:46	
Seclusion Hours Rate	0.052	0.068	0.095	0.063	0.127	0.118	0.073	0.085	0.049	0.040	0.086	0.112	0.081		0.44

* National Public Rate, NASMHPD Research Institute, National Research Institute (NRI), Data as of June 2013, Published in November 2013.

Performance Related Information for Staff & Managers

5. Demographic Information of Individuals in Care

Data Source: Avatar

Updated as of 01/15/15

Category	Sub-group	Jan-14	Feb-14	Mar-14	Apr-14	May-14	Jun-14	Jul-14	Aug-14	Sep-14	Oct-14	Nov-14	Dec-14	Monthly Average	Percent*
Total Active (on Roll) at End of Month*		273	268	263	270	268	271	272	276	278	276	274	283	273	
Gender	Female	79	75	76	82	84	81	82	88	92	92	87	93	84	30.9%
	Male	194	193	187	188	184	190	190	188	186	184	187	190	188	69.1%
Age	Median Age (Years)	56 yrs	57 yrs	56 yrs	56 yrs	57 yrs	57 yrs	55 yrs	56 yrs	55 yrs	56 yrs	55 yrs	55 yrs	56 yrs	
	<30 years old	22	17	18	18	15	17	21	25	29	24	30	28	22	8.1%
	>=30 and <40 years old	30	28	30	30	29	34	36	34	34	34	28	34	32	11.6%
	>=40 and <50 years old	44	40	36	37	37	39	40	39	34	32	31	36	37	13.6%
	>=50 and <60 years old	77	82	78	82	80	78	78	80	84	81	84	81	80	29.5%
	>=60 years old	100	101	101	103	107	103	97	98	97	105	101	104	101	37.2%
Legal Status of Individuals on Roll at End of Month	Emergency	34	33	35	31	36	33	28	25	27	22	21	29	30	10.8%
	Inpatient Commitment	26	28	28	30	31	33	36	39	34	35	35	35	33	11.9%
	Outpatient Commitment	22	22	32	19	18	22	28	23	23	22	27	27	24	8.7%
	Voluntary	41	47	43	38	41	36	36	40	37	35	32	32	38	14.0%
	Civil Sub-total	123	130	138	118	126	124	128	127	121	114	115	123	124	45.4%
	DC Exam	54	41	38	35	30	30	28	30	31	40	35	43	36	13.3%
	Mentally Incompetent	1	1	2	21	17	21	27	28	36	31	36	28	21	7.6%
	Forensic Pre-trial Sub-total	55	42	40	56	47	51	55	58	67	71	71	71	57	20.9%
	NGBRI - DC	77	78	77	79	79	80	74	75	74	76	74	75	77	28.1%
	NGBRI - US	13	13	13	12	12	12	11	11	11	10	10	10	12	4.2%
NGBRI - VI	1	1	1	1	1	1	1	1	1	1	1	1	1	0.4%	
Dual Commitment	2	2	2	2	1	1	1	2	2	2	1	1	2	0.6%	
Sexual Psychopath (Miller Act)	2	2	2	2	2	2	2	2	2	2	2	2	2	0.7%	
Forensic Post-trial Sub-total	95	96	95	96	95	96	89	91	90	91	88	89	93	34.0%	
Length of Stay	Median LOS (Days)	568 d	628 d	627 d	570 d	557 d	522 d	506 d	424 d	394 d	399 d	412 d	362 d	497 d	
	Average LOS (Days)	2885 d	2950 d	2962 d	2800 d	2772 d	2756 d	2669 d	2545 d	2516 d	2532 d	2549 d	2488 d	2702 d	
	<30 Days	35	29	27	51	34	30	35	40	35	41	35	38	36	13.1%
	>=30 ~ <365 Days	89	87	85	67	85	92	92	92	100	93	100	104	91	33.2%
	>= 1 Year & < 2 Years	19	23	23	26	24	24	22	25	27	25	23	25	24	8.7%
	>= 2 Years & < 5 Years	32	31	32	32	33	32	32	29	27	28	29	29	31	11.2%
	>= 5 Years & < 20 Years	53	53	52	52	51	51	50	50	49	48	46	46	50	18.4%
>= 20 Years	45	45	44	42	41	42	41	40	40	41	41	41	42	15.4%	

* Counts the total number of individuals who are on the hospital roll at end of each month. This number serves as denominator to calculate percentage of each group.

Performance Related Information for Staff & Managers

6. Major Unusual Incidents by Incident Location/Unit

Data Source: UI DB

Updated as of 01/15/15

Category		Jan-14	Feb-14	Mar-14	Apr-14	May-14	Jun-14	Jul-14	Aug-14	Sep-14	Oct-14	Nov-14	Dec-14	Monthly Average	Total (12mths)	Percent
Total Unusual Incidents		215	169	192	212	193	174	199	249	190	217	207	235	204	2452	100%
Incident Location	1A	5	6	11	6	14	4	7	15	4	11	12	9	9	104	4%
	1B	13	16	13	7	9	9	21	19	10	18	14	12	13	161	7%
	1C	11	9	11	17	7	11	6	12	18	31	14	24	14	171	7%
	1D	27	17	27	11	27	22	19	29	20	7	18	40	22	264	11%
	1E	26	9	33	22	17	13	12	22	21	25	15	25	20	240	10%
	1F	39	33	24	27	19	15	37	32	28	25	23	33	28	335	14%
	1G	29	14	6	22	27	24	12	28	20	13	7	7	17	209	9%
	2A	1	7	3	5	3	3	6	10	7	4	12	7	6	68	3%
	2B	2	2	3	6	4	0	2	4	8	5	15	2	4	53	2%
	2C	10	12	15	19	19	19	22	20	9	17	10	15	16	187	8%
	2D	14	14	14	34	16	13	20	18	17	18	26	22	19	226	9%
	TLC	28	14	22	21	17	24	14	20	15	26	26	23	21	250	10%
	Other	10	16	10	15	14	17	21	20	13	17	15	16	15	184	8%
Physical Assault		55	41	40	64	55	36	38	51	44	67	42	58	49	591	100%
Incident Location	1A	2	1	1	1	5	0	2	2	1	0	0	0	1	15	3%
	1B	0	4	0	1	3	1	3	0	2	4	2	3	2	23	4%
	1C	3	2	0	5	2	3	1	0	3	8	0	8	3	35	6%
	1D	4	7	13	4	8	8	5	14	11	4	3	5	7	86	15%
	1E	13	0	12	8	7	3	5	2	4	12	4	3	6	73	12%
	1F	7	5	1	7	4	2	5	3	5	8	9	18	6	74	13%
	1G	10	8	3	8	9	4	3	8	9	4	0	2	6	68	12%
	2A	0	0	0	0	0	0	0	0	0	1	1	2	0	4	1%
	2B	0	0	0	0	0	0	2	0	0	0	1	0	0	3	1%
	2C	4	5	2	7	5	7	4	3	2	4	6	5	5	54	9%
	2D	6	4	3	15	8	3	1	11	4	11	8	6	7	80	14%
	TLC - Intensive	4	5	3	5	3	2	2	3	0	7	5	4	4	43	7%
	TLC - Transitional	1	0	1	1	0	0	2	4	3	0	3	1	1	16	3%
	Other	1	0	1	2	1	3	3	1	0	4	0	1	1	17	3%

Performance Related Information for Staff & Managers

6. Major Unusual Incidents by Incident Location/Unit

Data Source: UI DB

Updated as of 01/15/15

Category		Jan-14	Feb-14	Mar-14	Apr-14	May-14	Jun-14	Jul-14	Aug-14	Sep-14	Oct-14	Nov-14	Dec-14	Monthly Average	Total (12mths)	Percent
Aggressive Behavior		67	48	65	62	57	61	71	102	66	67	70	78	68	814	138%
Incident Location	1A	0	2	0	0	0	1	1	5	1	2	1	3	1	16	3%
	1B	0	1	4	0	0	0	3	7	4	5	2	1	2	27	5%
	1C	1	4	3	3	0	1	3	6	7	10	3	7	4	48	8%
	1D	8	3	9	2	10	5	4	12	7	1	7	23	8	91	15%
	1E	12	2	14	9	4	3	2	15	11	9	7	12	8	100	17%
	1F	18	19	15	13	9	10	20	18	10	15	11	12	14	170	29%
	1G	9	4	1	10	11	17	5	14	8	0	2	0	7	81	14%
	2A	0	4	1	3	2	2	4	7	3	1	2	1	3	30	5%
	2B	1	1	0	2	1	0	0	1	4	2	11	0	2	23	4%
	2C	2	4	6	3	8	10	12	6	3	5	2	4	5	65	11%
	2D	4	2	4	9	5	2	8	1	2	5	11	8	5	61	10%
	TLC - Intensive	7	1	6	5	6	7	4	3	3	3	4	3	4	52	9%
	TLC - Transitional	4	0	2	3	0	2	3	4	1	4	5	1	2	29	5%
	Other	1	1	0	0	1	1	2	3	2	5	2	3	2	21	4%
Psych Emergency		52	34	53	34	48	48	45	86	56	67	57	71	54	651	110%
Incident Location	1A	0	1	0	0	0	1	1	1	0	1	0	3	1	8	1%
	1B	0	3	3	0	0	0	2	3	1	7	2	1	2	22	4%
	1C	0	1	1	0	0	2	1	3	2	11	0	4	2	25	4%
	1D	8	3	7	2	10	6	3	18	9	3	9	14	8	92	16%
	1E	15	1	23	8	5	3	1	16	16	14	10	14	11	126	21%
	1F	17	16	10	5	7	4	19	13	10	15	16	18	13	150	25%
	1G	10	5	3	9	16	17	5	16	12	3	0	0	8	96	16%
	2A	0	0	0	2	0	0	0	0	0	0	0	1	0	3	1%
	2B	0	0	0	0	0	0	0	1	0	0	5	0	1	6	1%
	2C	0	1	4	4	4	10	7	7	0	4	0	1	4	42	7%
	2D	1	2	1	3	2	0	3	5	3	5	11	13	4	49	8%
	TLC - Intensive	1	1	1	0	4	4	2	2	0	2	2	1	2	20	3%
	TLC - Transitional	0	0	0	1	0	0	0	1	2	0	2	0	1	6	1%
	Other	0	0	0	0	0	1	1	0	1	2	0	1	1	6	1%

Performance Related Information for Staff & Managers

6. Major Unusual Incidents by Incident Location/Unit

Data Source: UI DB

Updated as of 01/15/15

Category		Jan-14	Feb-14	Mar-14	Apr-14	May-14	Jun-14	Jul-14	Aug-14	Sep-14	Oct-14	Nov-14	Dec-14	Monthly Average	Total (12mths)	Percent
Fall		18	25	26	24	22	20	25	24	25	30	31	35	25	305	100%
Incident Location	1A	2	3	5	1	3	0	1	4	2	4	9	3	3	37	12%
	1B	1	3	2	2	1	1	4	6	4	4	5	4	3	37	12%
	1C	4	2	2	2	4	2	0	1	0	5	2	8	3	32	10%
	1D	1	2	4	1	5	0	5	2	3	2	2	1	2	28	9%
	1E	3	1	1	2	0	2	0	1	1	2	2	1	1	16	5%
	1F	3	1	1	1	0	1	3	1	2	1	2	2	2	18	6%
	1G	0	1	1	1	2	0	2	2	1	2	1	1	1	14	5%
	2A	0	1	0	0	0	0	0	0	1	0	0	0	2	4	1%
	2B	0	1	2	4	0	0	0	1	2	2	1	0	1	13	4%
	2C	0	1	4	1	2	1	3	1	0	1	0	5	2	19	6%
	2D	1	2	2	7	1	4	4	1	5	2	1	1	3	31	10%
	TLC - Intensive	0	0	0	1	0	1	0	0	1	1	1	1	1	6	2%
	TLC - Transitional	0	1	0	1	1	2	1	2	1	1	3	3	1	16	5%
	Other	3	6	2	0	3	6	2	2	2	3	2	3	3	34	11%
Physical Injury		47	30	34	43	34	24	26	40	37	36	39	36	36	426	100%
Incident Location	1A	0	1	4	3	3	2	2	2	1	0	1	0	2	19	4%
	1B	1	2	2	1	3	1	4	2	1	2	3	1	2	23	5%
	1C	3	2	1	0	2	2	0	2	1	5	0	3	2	21	5%
	1D	11	6	5	1	6	2	3	6	8	3	3	7	5	61	14%
	1E	7	1	8	6	3	3	5	4	2	7	4	1	4	51	12%
	1F	10	5	1	3	1	1	1	4	12	5	8	7	5	58	14%
	1G	3	5	2	5	9	2	2	6	0	3	1	2	3	40	9%
	2A	0	0	0	0	0	0	0	0	1	0	2	2	0	5	1%
	2B	0	1	2	1	1	0	1	0	1	0	0	0	1	7	2%
	2C	4	1	5	7	2	2	3	4	2	2	2	4	3	38	9%
	2D	3	3	2	8	1	1	2	1	4	2	7	5	3	39	9%
	TLC - Intensive	2	1	2	2	1	2	1	2	0	4	3	1	2	21	5%
	TLC - Transitional	0	0	0	0	0	2	0	2	2	0	3	2	1	11	3%
	Other	3	2	0	6	2	4	2	5	2	3	2	1	3	32	8%

* Not every incident is a major incident. This counts only those incidents that were classified to be major based on the policy.