



**Government of the District of Columbia
Department of Behavioral Health (DBH)**



PRISM

Performance Related Information for Staff and Managers



AUGUST 2015

Office of Statistics and Reporting (OSR), 09/17/15

Table of Contents

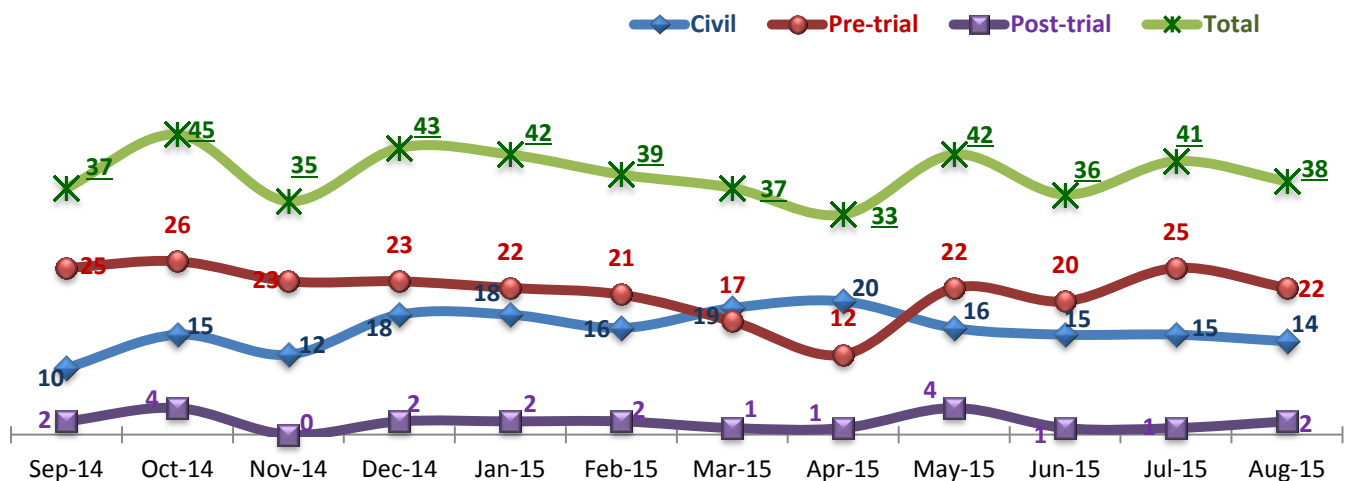
1. Admissions to SEH	1
2. Discharges from SEH	1
3. Average Daily Census.....	2
4. Transfers.....	2
5. 30-Day Readmission Rate	2
6. Unusual Incidents	3
7. Patient-Involved Unusual Incidents	3
8. Admissions vs. Patient UI Rate	4
9. Unusual Incidents by Severity.....	4
10. Selected Types of Incidents	4
11. Physical Assaults by Severity	5
12. Patient Injuries	5
13. Staff Injuries	5
14. Patient and Staff Falls	6
15. Percent of Patients Restrained or Secluded	6
16. Restraint Hours Rate & Seclusion Hours Rate	6
17. Elopements.....	7
18. Reported Medication Variance Events.....	7
19. Reported Adverse Drug Reactions	8
20. Percent of Missing Documentation on Med-Administration.....	8
21. Medication Refusal Rate*.....	8
22. Number of STAT Events and Individuals Involved	9
23. Percentage of SiteFM Work Orders Completed within 3 Days	9
24. Demographics and Length of Stay.....	10

- ☐ *Appendix 1) Table – Census, Admissions & Discharges*
- ☐ *Appendix 2) Table – Key Performance Indicators*
- ☐ *Appendix 3) Table – Unusual Incident & Medication*
- ☐ *Appendix 4) Table – Restraint & Seclusion*
- ☐ *Appendix 5) Table – Demographic Information of Individuals in Care*
- ☐ *Appendix 6) Table – Unusual Incidents by Unit*

Key Trends: Admission, Discharge, Transfer, Census, and Readmissions (1~6)

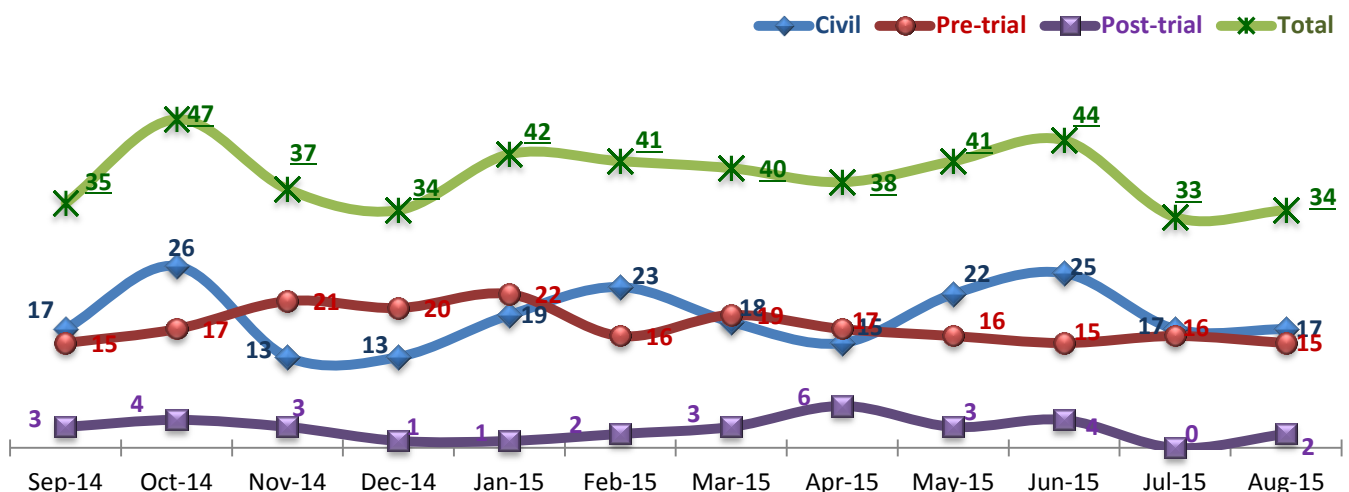
- The number of admissions declined to 38 in August 2015 from 41 in July 2015 while the number of discharges in August (34) is slightly higher than that in July (33).
- As admissions continued to exceed discharges, the average daily census (ADC) for the month of August increased to 275 from ADC in July (270).
- The 30-day readmission rate for FY15 year-to-date (6.5%) is slightly lower than the national average (NPR at 6.9%)¹, but it is much higher than the Hospital's 30-day readmission rate in FY14 (2.3%). A majority of 30-day readmissions (69% or 18 of 26) in FY15 are those discharged in a civil legal status, including four readmissions since May. This is in contrast to FY14, when only 30% of 30-day readmissions were from *Civil* discharges.

1. Admissions to SEH



* Number of admissions to SEH inpatient program, including transfers from forensic outpatient to inpatient program.

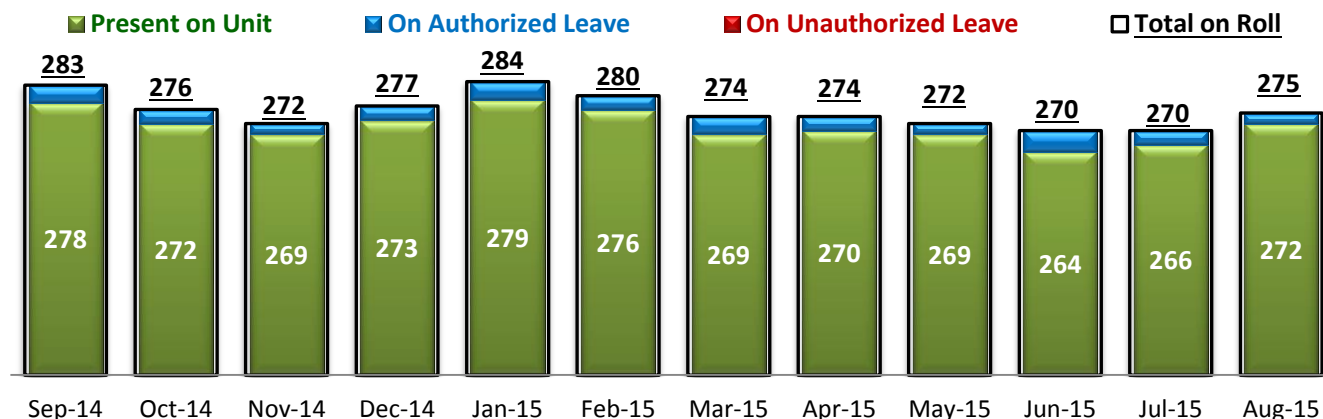
2. Discharges from SEH



* Number of discharges from SEH inpatient program, including transfers from inpatient to forensic outpatient program.

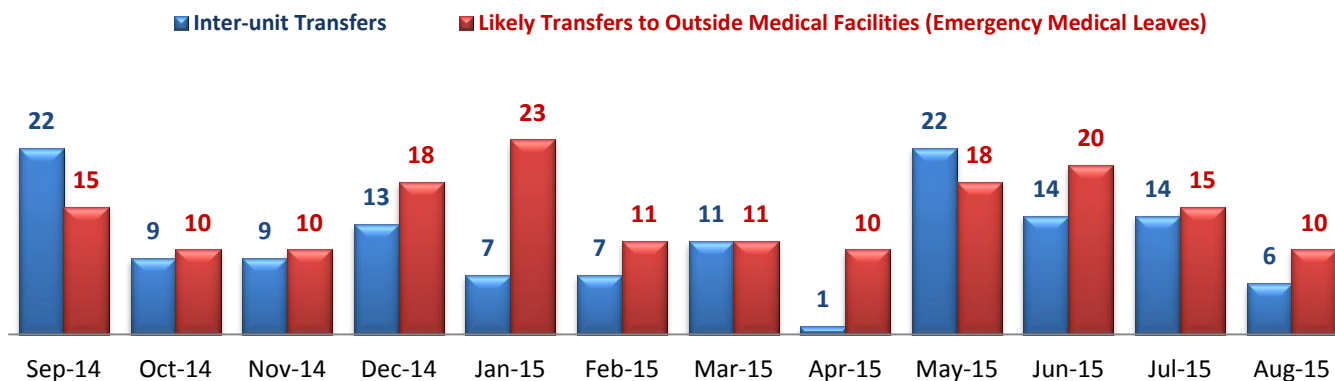
¹ NPR: National Public Rate as of June 2013 was published in November 2013 by National Association of State Mental Health Program Directors Research Institute (NRI), based on data collected from a number of state psychiatric hospitals nationwide.

3. Average Daily Census



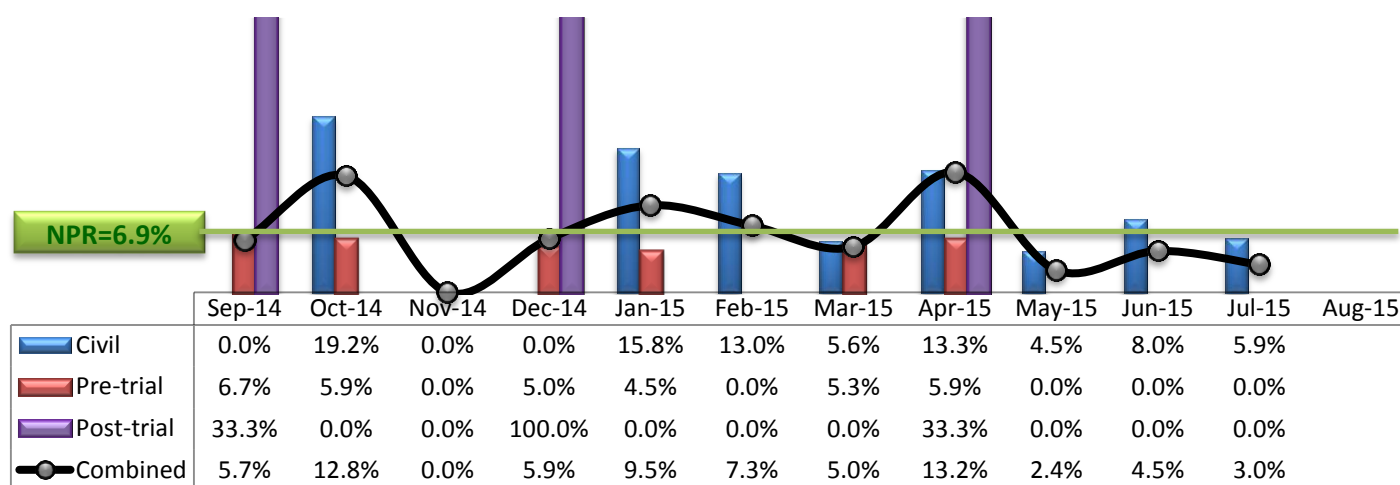
* Data above is the daily average number of individuals counted at 11:59 PM every day during each month.

4. Transfers



* Number of inter-unit transfers that occurred during month and number of emergency medical leaves that were initiated during month.

5. 30-Day Readmission Rate



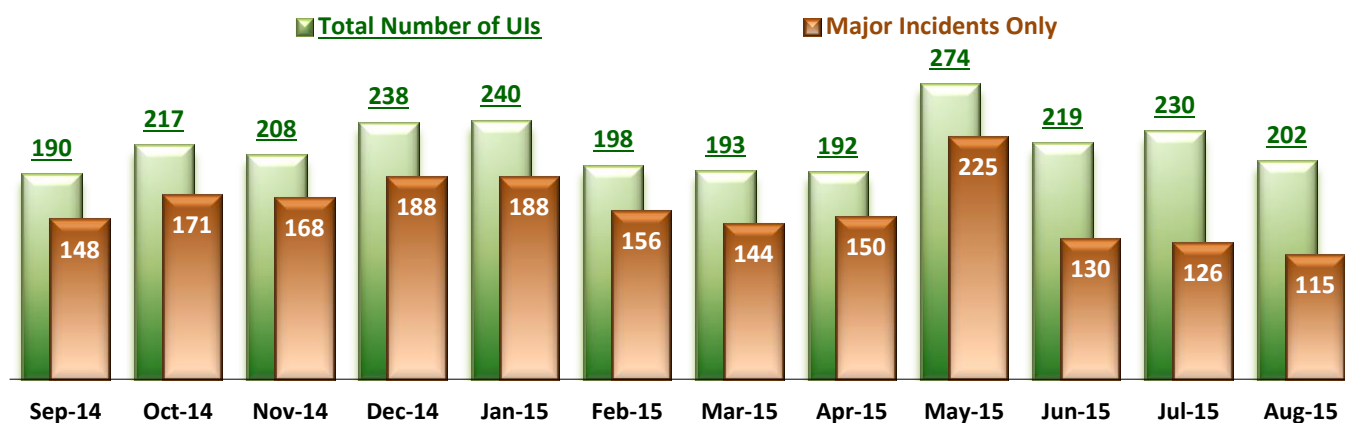
* Percent of discharges that returned to SEH within 30 days of discharges. It does not include those who may have been re-hospitalized at another psychiatric facility. This measure requires 30-day observation following discharge.

** The post-trial denominators (discharges) per month range only between one and six, making the monthly re-admission rate high when there is any. For example, in December 2014, there was only one post-trial discharge, which was readmitted within 30 days. Thus, the 30-day readmission rate for post-trial discharge for this month is 100%.

Key Trends: Unusual Incidents (6~16)

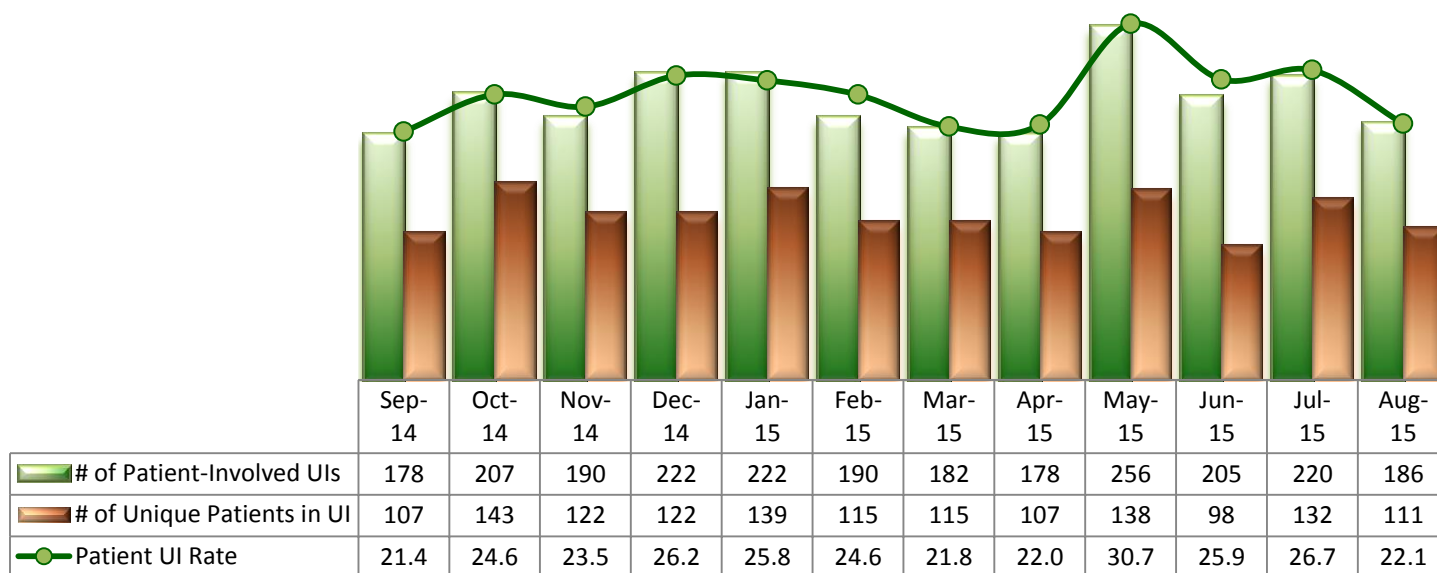
- In August 2015, the total number of unusual incidents (202 UIs) and the patient UI rate (22.1 per 1000 patient days) noticeably decreased likely because the number of admissions decreased in the month. However, the decrease was mostly for low or medium severity incidents, and the number of high severity incidents (22) in August remained the same as July.
- In August, the number of violence related UIs, both aggressive behaviors and physical assaults, decreased, and so did injury incidents. However, the number of fall incidents, particularly the patient fall rate (3.68 per 1000 patient days) continued to remain high in August 2015.
- The percent of patients restrained and the restraint hours rate decreased in August while the percent of patients secluded increased although the seclusion hours rate slightly declined.
- There were no elopements between July 2014 and April 2015 (for 10 months), but each of the months between May and July 2015 had one elopement although all of those three individuals who had eloped returned to the Hospital within a few hours. In the month of August 2015, no elopement incident was reported.

6. Unusual Incidents



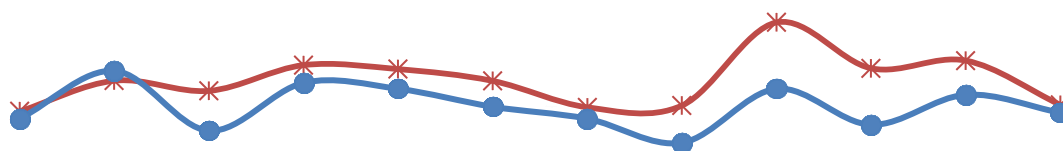
* A medication or vital sign refusal is no longer a UI since May 2014 and data above prior to May 2014 also excludes those incidents.

7. Patient-Involved Unusual Incidents



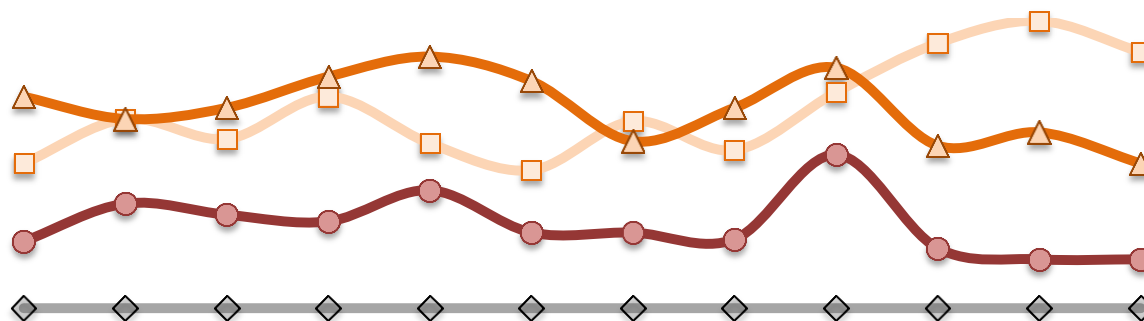
* The patient UI rate is the number of patient-involved unusual incidents reported for every 1000 inpatient days.

8. Admissions vs. Patient UI Rate



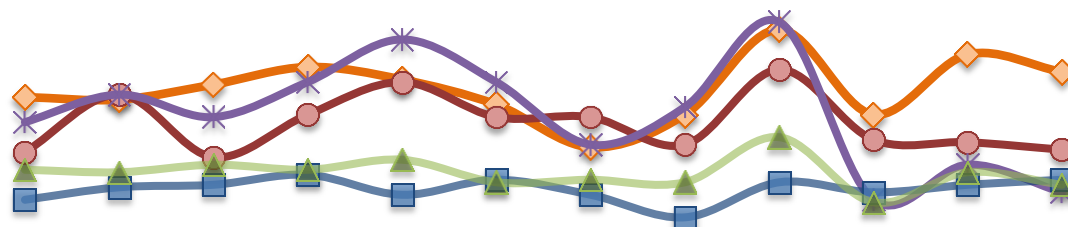
	Sep-14	Oct-14	Nov-14	Dec-14	Jan-15	Feb-15	Mar-15	Apr-15	May-15	Jun-15	Jul-15	Aug-15
—*— Patient UI Rate	21.4	24.6	23.5	26.2	25.8	24.6	21.8	22.0	30.7	25.9	26.7	22.1
—●— Admission	37	45	35	43	42	39	37	33	42	36	41	38

9. Unusual Incidents by Severity



	Sep-14	Oct-14	Nov-14	Dec-14	Jan-15	Feb-15	Mar-15	Apr-15	May-15	Jun-15	Jul-15	Aug-15
□ 1) Low	65	85	76	95	74	62	84	71	97	119	129	115
△ 2) Medium	95	85	90	104	113	102	75	90	108	73	79	65
● 3) High	30	47	42	39	53	34	34	31	69	27	22	22
◆ 4) Catstrp	0	0	0	0	0	0	0	0	0	0	0	0
Total UI	190	217	208	238	240	198	193	192	274	219	230	202

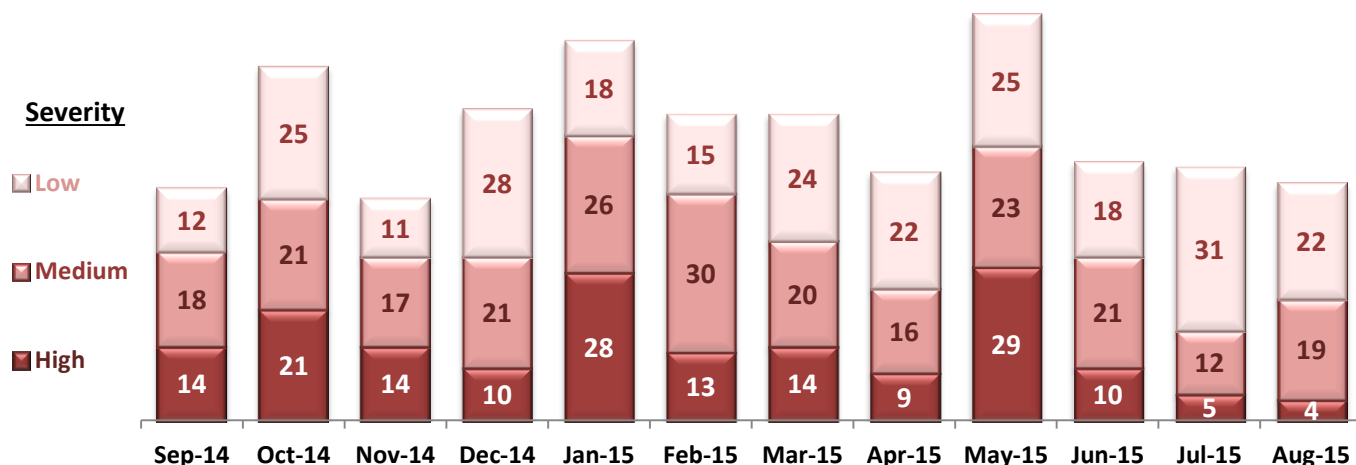
10. Selected Types of Incidents



	Sep-14	Oct-14	Nov-14	Dec-14	Jan-15	Feb-15	Mar-15	Apr-15	May-15	Jun-15	Jul-15	Aug-15
◆ Aggressive Behavior	66	65	71	78	73	63	46	59	93	59	83	76
● Physical Assault	44	67	42	59	72	58	58	47	77	49	48	45
* Psych Emerg.	56	67	58	72	89	72	47	62	96	25	39	28
■ Fall	25	30	31	35	27	33	27	18	32	28	31	33
▲ Injury	37	36	39	37	41	32	33	32	50	24	36	31

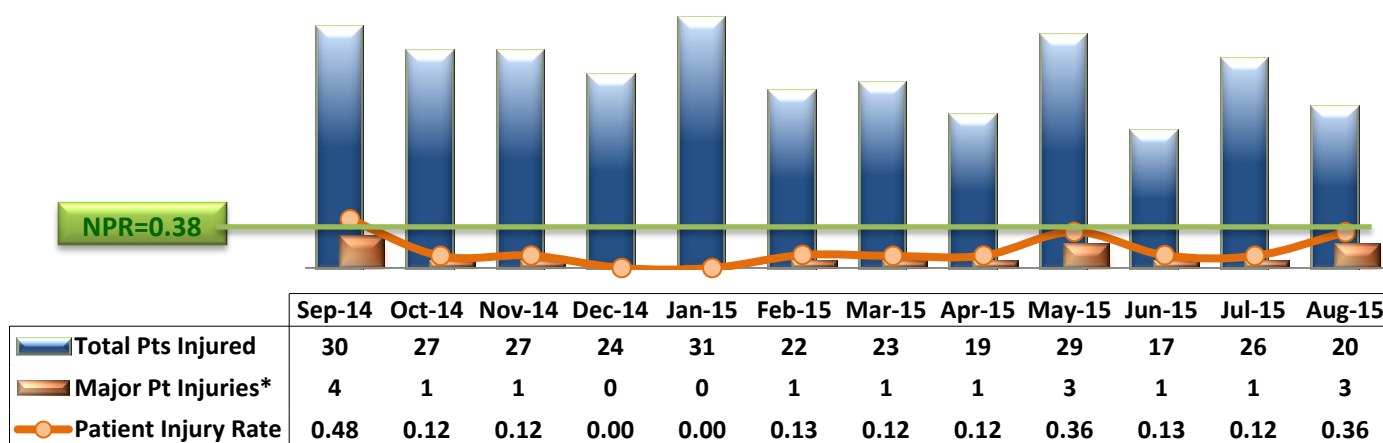
* These are incident types that are frequently reported. Some incidents may be counted in multiple categories. For example, a physical assault incident that accompanied psychiatric emergency and injury is counted under psychiatric emergency and injury as well as under physical assault. Injury is broadly defined to include any type of injuries regardless of the cause or severity level.

11. Physical Assaults by Severity



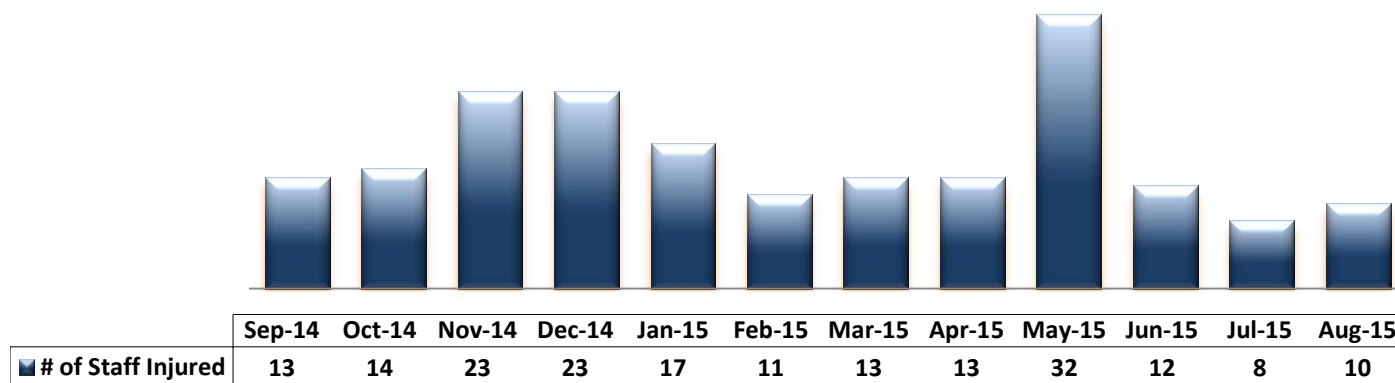
* Any physical assault that accompanies a code 13 or results in extensive injury needing off-unit treatment or transfer to ER is considered to be high severity, any physical assault that causes a minor injury that can be treated on unit is considered to be medium severity, and physical assault events that result in no injury are considered to be low severity.

12. Patient Injuries



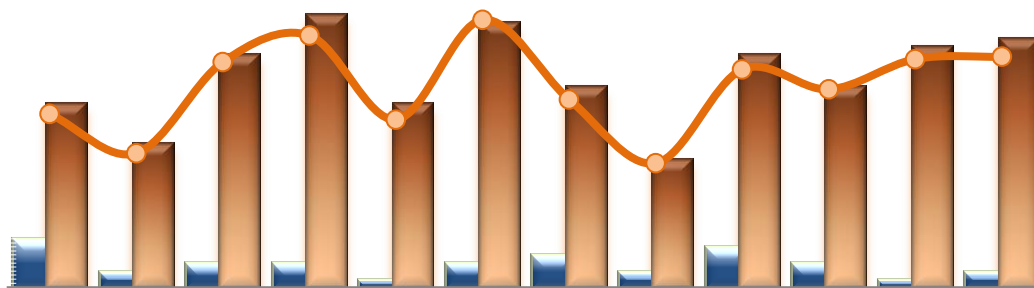
* Injury is broadly defined to include any type of injuries regardless of the cause or severity level. The total number of patients injured represents all of the reported injuries including minor injuries treated with first aid alone. However, the patient injury rate considers only the number of patient injuries that required beyond first-aid level treatment based on the NRI definition and the patient injury rate is the number of 'major' patient injuries per every 1000 inpatient days

13. Staff Injuries



* Injury is broadly defined to include any type of injuries regardless of the cause or severity level. The total number of staff injured represents all of the reported staff injuries including minor injuries treated with first aid alone.

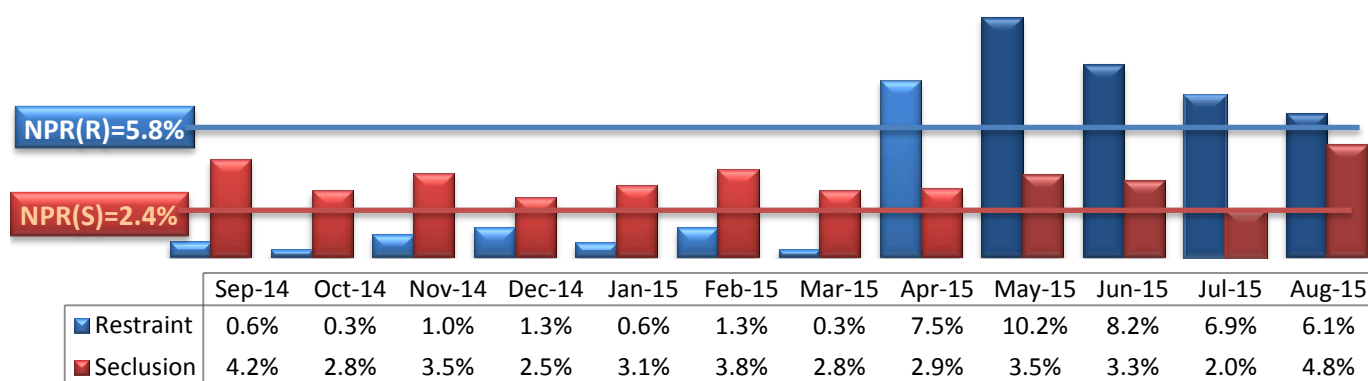
14. Patient and Staff Falls



	Sep-14	Oct-14	Nov-14	Dec-14	Jan-15	Feb-15	Mar-15	Apr-15	May-15	Jun-15	Jul-15	Aug-15
Total Staff who Fell	6	2	3	3	1	3	4	2	5	3	1	2
Total Patients who Fell	23	18	29	34	23	33	25	16	29	25	30	31
Patient Fall Rate	2.76	2.14	3.59	4.01	2.67	4.26	2.99	1.98	3.47	3.15	3.64	3.68

* The patient fall rate is the number of patient falls per every 1000 inpatient days.

15. Percent of Patients Restrained or Secluded



	Sep-14	Oct-14	Nov-14	Dec-14	Jan-15	Feb-15	Mar-15	Apr-15	May-15	Jun-15	Jul-15	Aug-15
Restraint	0.6%	0.3%	1.0%	1.3%	0.6%	1.3%	0.3%	7.5%	10.2%	8.2%	6.9%	6.1%
Seclusion	4.2%	2.8%	3.5%	2.5%	3.1%	3.8%	2.8%	2.9%	3.5%	3.3%	2.0%	4.8%

* Percent of unique patients who were restrained at least once and percent of unique patients who were secluded at least once. The denominator includes all individuals who were served in care ≥ 1 day during month.

** Data prior to April 2015, the Hospital tracked only mechanical restraint events, but the Hospital's restraint policy has changed to include any physical holds. The sudden increase of the restraint data as of April 2015 reflects this change.

*** The previous PRISM reports presented incorrect data for some months in the indicators 15 above and 16 below, and data herein has been updated to reflect the correct numbers.

16. Restraint Hours Rate & Seclusion Hours Rate

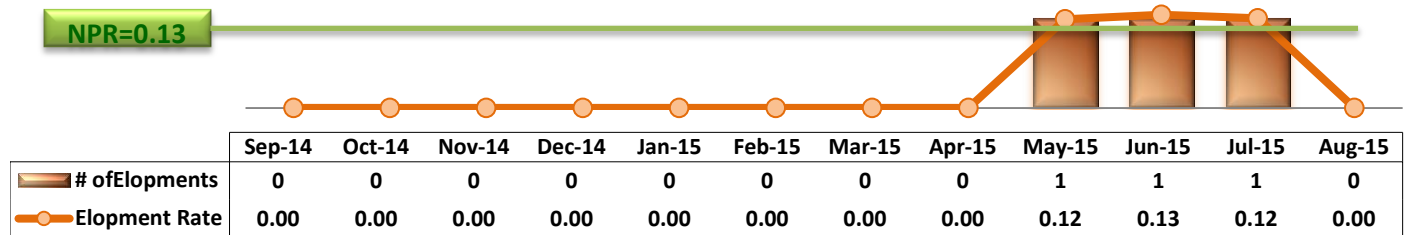


	Sep-14	Oct-14	Nov-14	Dec-14	Jan-15	Feb-15	Mar-15	Apr-15	May-15	Jun-15	Jul-15	Aug-15
Restraint	0.030	0.010	0.021	0.105	0.072	0.015	0.004	0.031	0.098	0.074	0.163	0.009
Seclusion	0.052	0.040	0.086	0.041	0.045	0.088	0.101	0.043	0.060	0.150	0.067	0.063

* Restraint/Seclusion Hours Rate: Number of hours spent in restraint/seclusion for every 1000 inpatient hours.

** The duration of each physical hold event is counted as 1 minute as a physical hold is ordered and used only as a temporary intervention that lasts less than a minute to break up any physical conflicts or to administer emergency medications.

17. Elopements

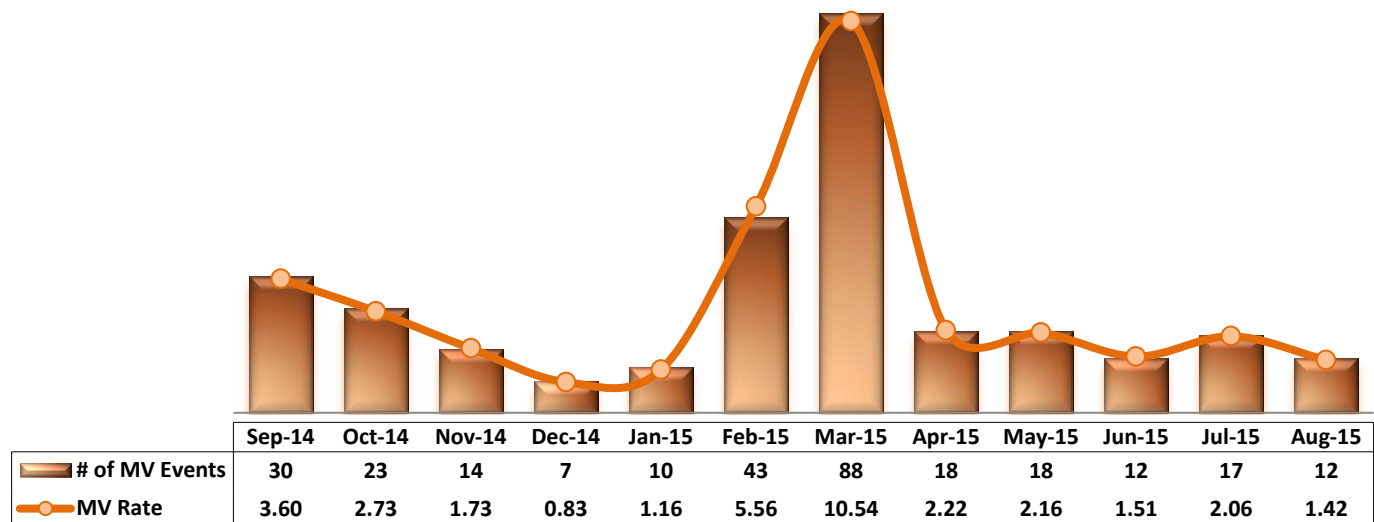


* It counts the total number of unauthorized leaves for any duration that were initiated during month and were recorded in Avatar. The elopement rate is the number of those unauthorized leaves that occurred for every 1000 inpatient days.

Key Trends: Medication Documentation, Medication Variance, ADR, and STAT (18~22)

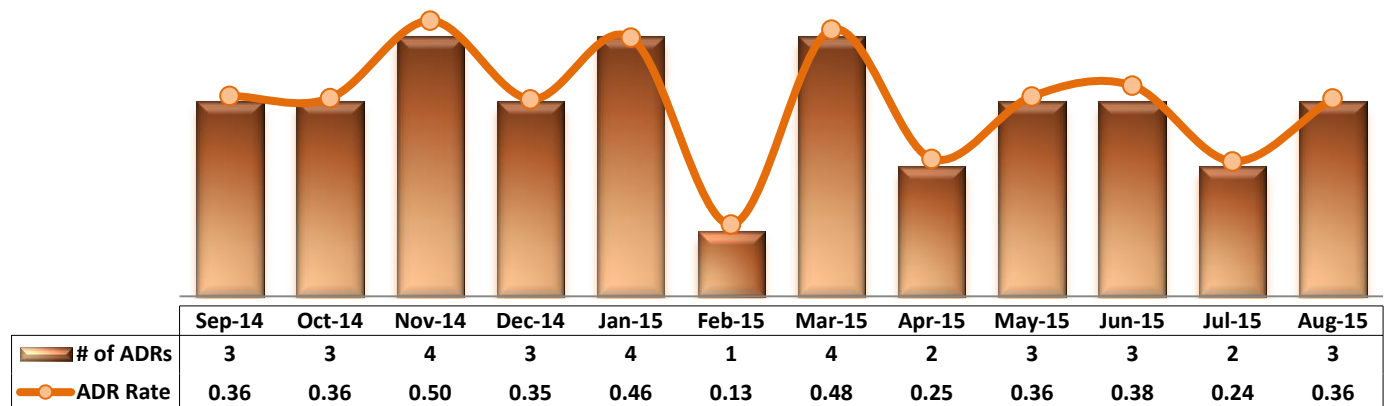
- The number of reported MVs ranged between 12 and 18 per month in the last five (5) months.
- The number of reported ADRs ranged between one (1) and four (4) per month in the last 12 months.
- The rate of missing documentation on medication administration decreased from 0.76% in July 2015 to 0.50% in August, which is the lowest since July 2014.
- The medication refusal rate increased to above 6% in August 2015.
- The number of STAT events marginally decreased although the number of unique individuals involved in one or more STAT events increased slightly.

18. Reported Medication Variance Events



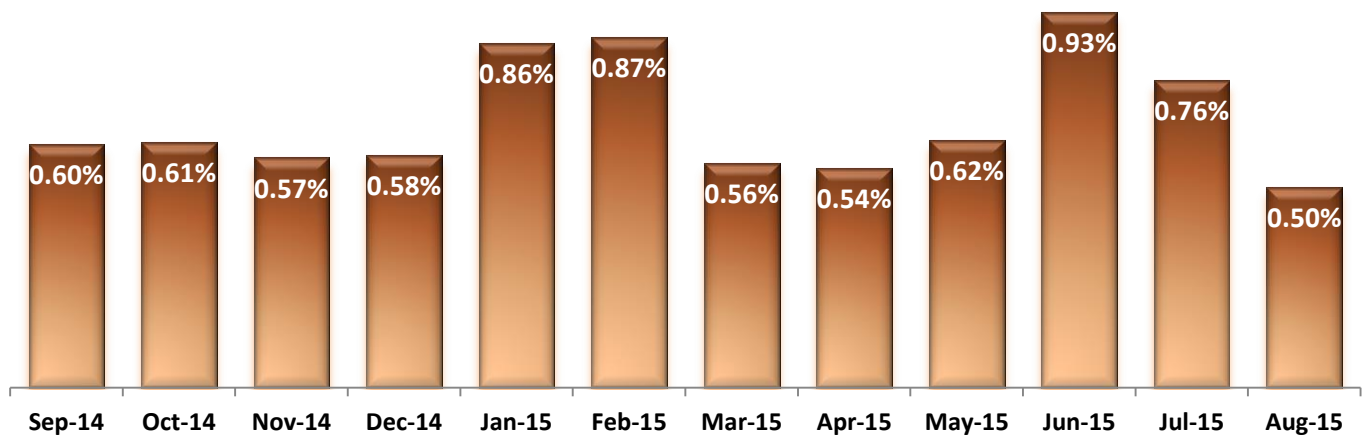
* MV Rate: Number of reported medication variance events that occurred for every 1000 inpatient days.

19. Reported Adverse Drug Reactions

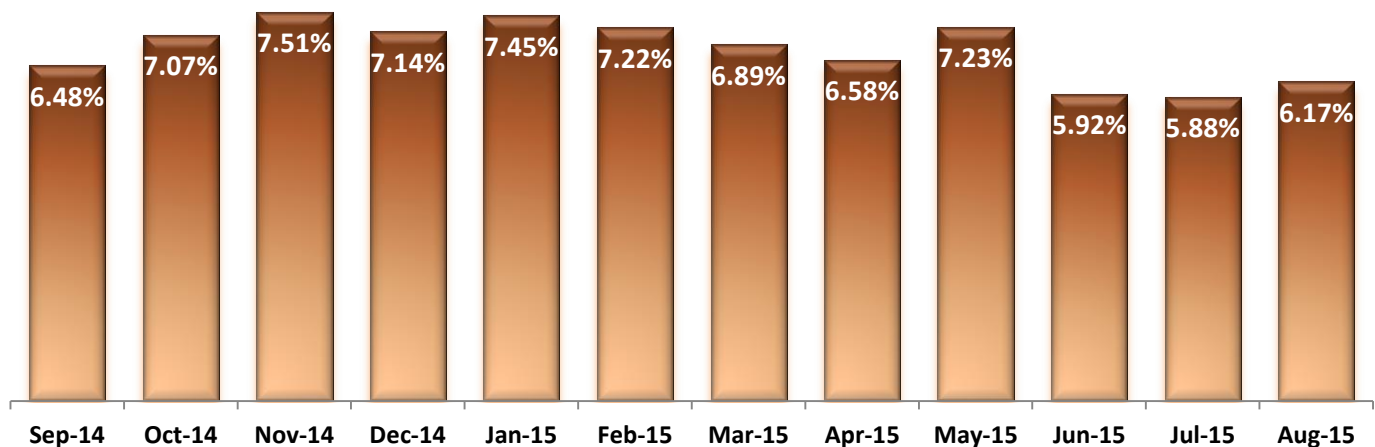


* ADR Rate: Number of reported adverse drug reaction events that occurred for every 1000 inpatient days.

20. Percent of Missing Documentation on Med-Administration

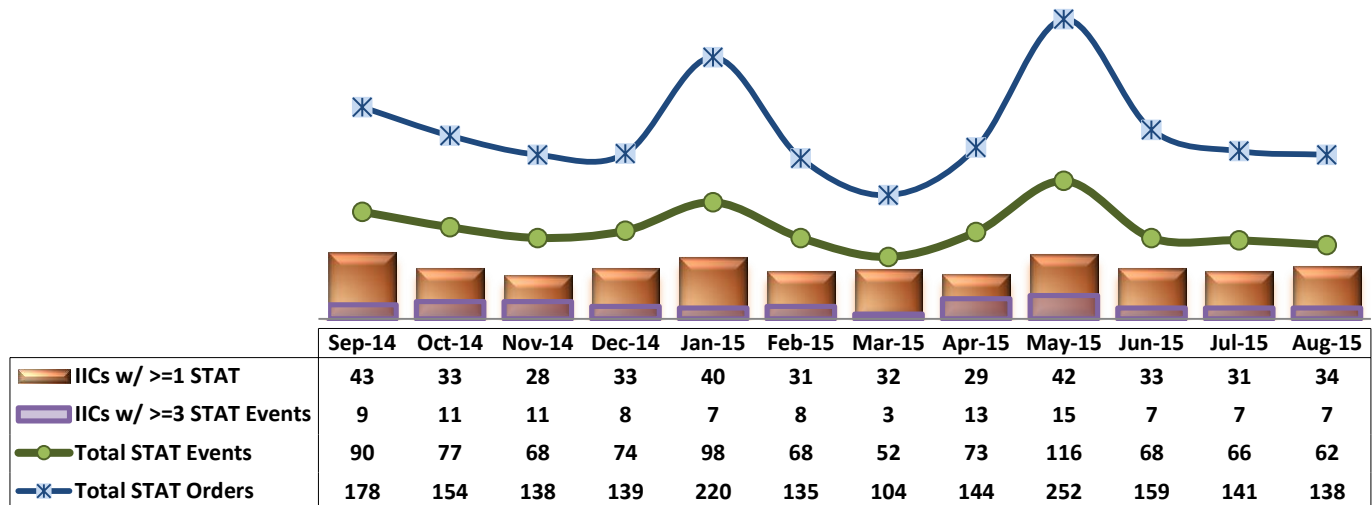


21. Medication Refusal Rate*



* Medication Refusal Rate: the number of refused medication doses divided by the total number of doses scheduled for administration.

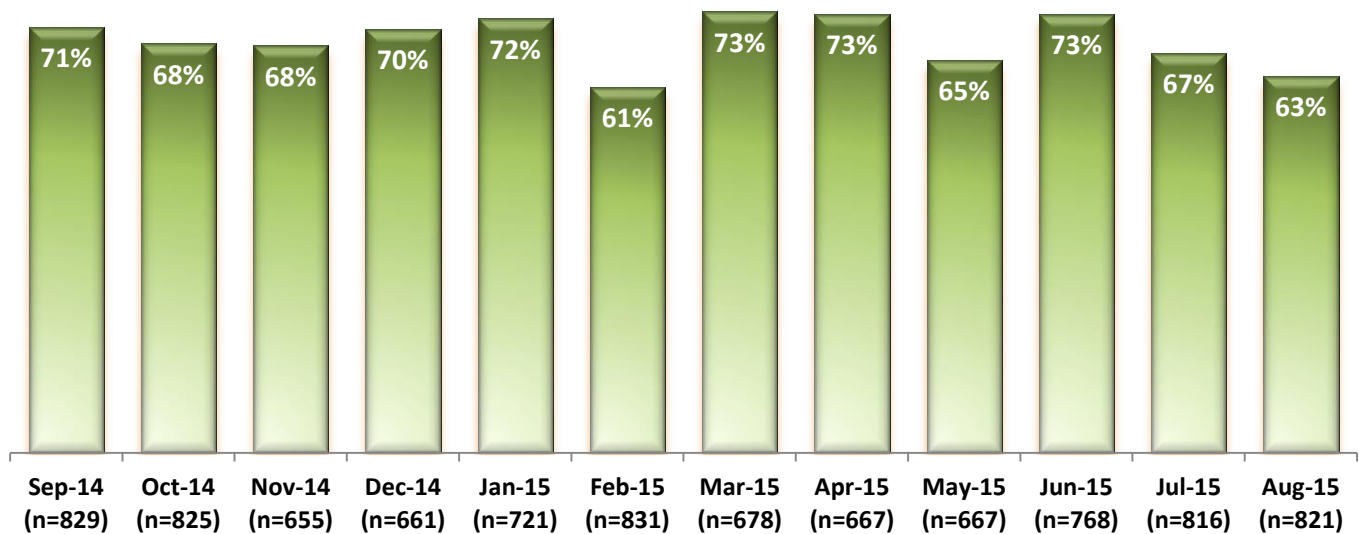
22. Number of STAT Events and Individuals Involved



Key Trends: Environment of Care (23)

- During CY2014, on average, the Hospital received a total of 773 work orders per month (or 25 per day) through SiteFM. Of those, 70% were completed within 3 days.
- In the month of August 2015, the Hospital received a total of 821 SiteFM work orders (26 per day), which is higher than the level of work orders received in the previous five months.
- The 3-day completion rate of SiteFM work orders in August 2015 continued to decline to 63%, lower than 67% in July. This may be due in part to the high volume of work orders during the recent months.

23. Percentage of SiteFM Work Orders Completed within 3 Days



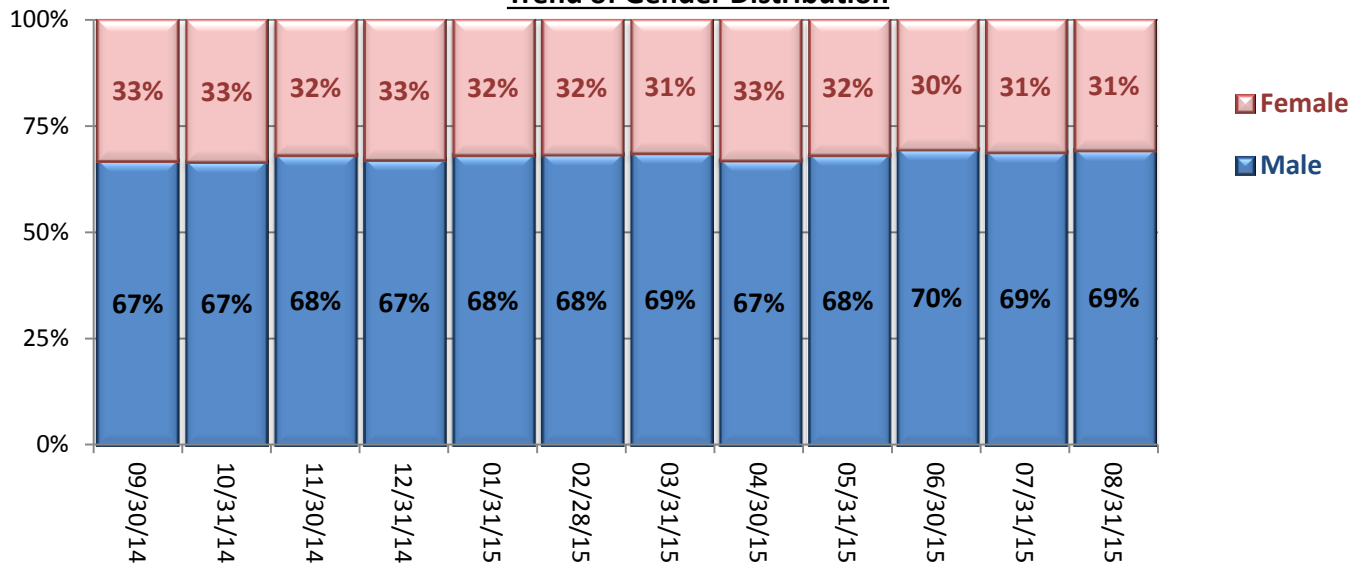
* This data was analyzed and included in PRISM for the first time in December 2014.

Key Trends: Demographics, Legal Status, and Length of Stay (24)

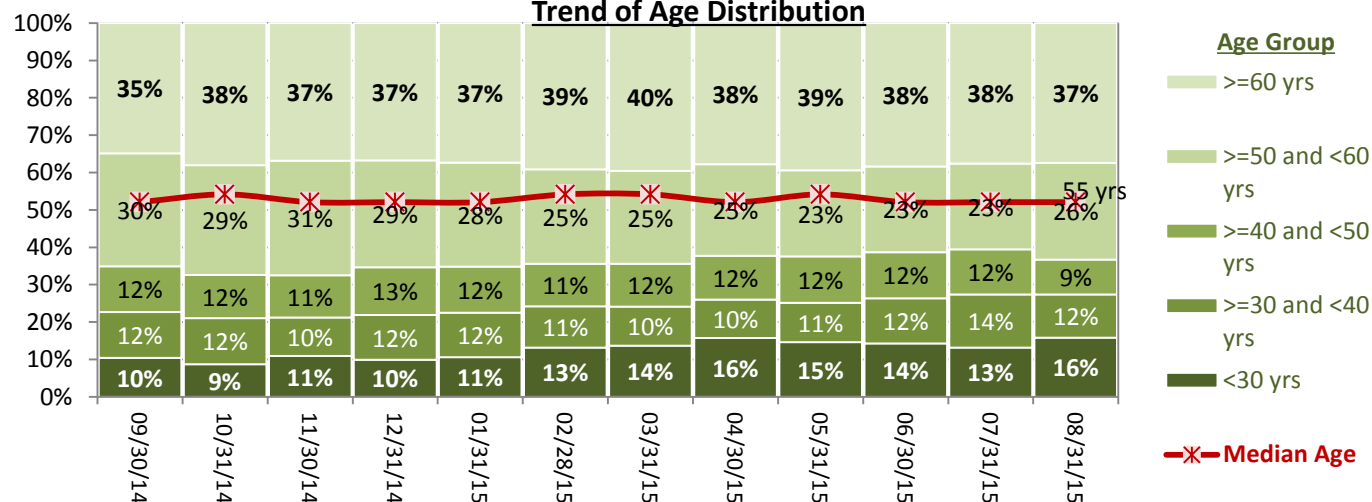
- The proportion of female individuals remaining in the Hospital's care increased in FY14, from 26% as of October 2013 to 33% in September 2014; since then, the proportion of female individuals has remained in the range of 30% to 33%.
- While the percent of individuals with 60 years or older ranged from 35% to 40%, the percent of individuals under 30 years old increased significantly over the past year. In May 2014, only 6% among IICs were younger than 30 years of age, and this age group reached 16% in April 2015. It decreased slightly for a few months but increased again to 16% in August 2015. This trend of an increase of younger population among individuals in care coincides with the significant increase in the number of *Pre-trial* admissions, which tend to include more of younger population who also tend to trigger more of violence related incidents.
- The median length of stay (LOS) for individuals remaining in care had decreased gradually in CY2014, falling to the lowest level (362 days or 12 months) as of December 31, 2014. Since then, the median LOS increased gradually and remained above 430 days (about 14 months) for the past three months.

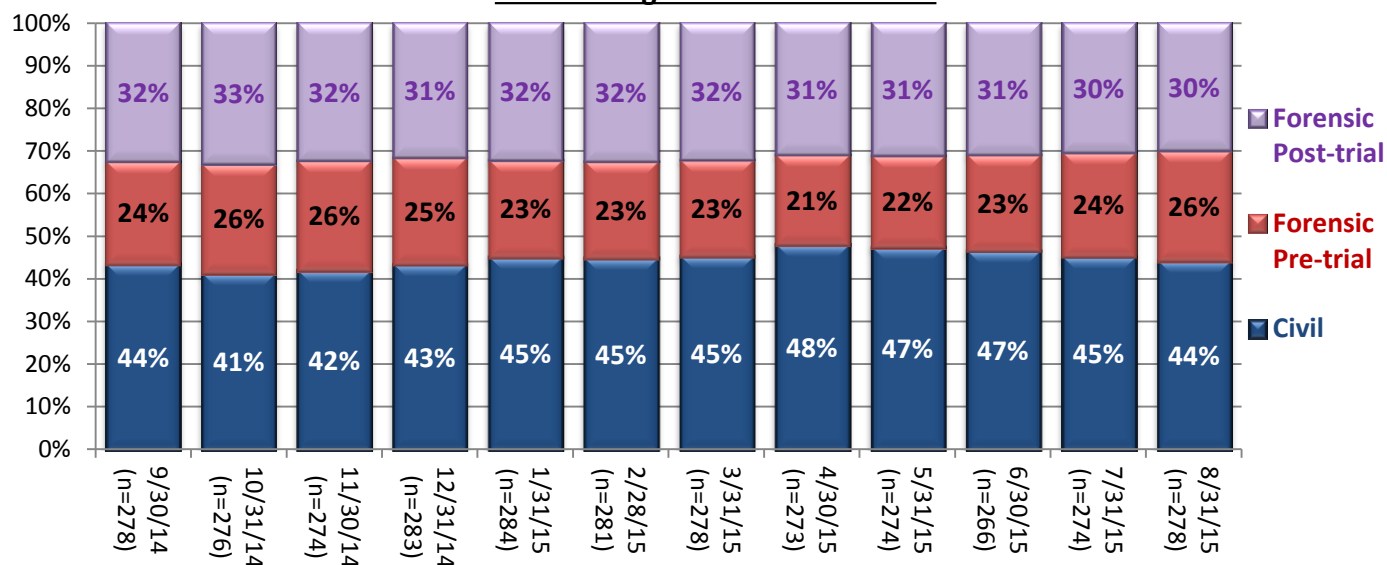
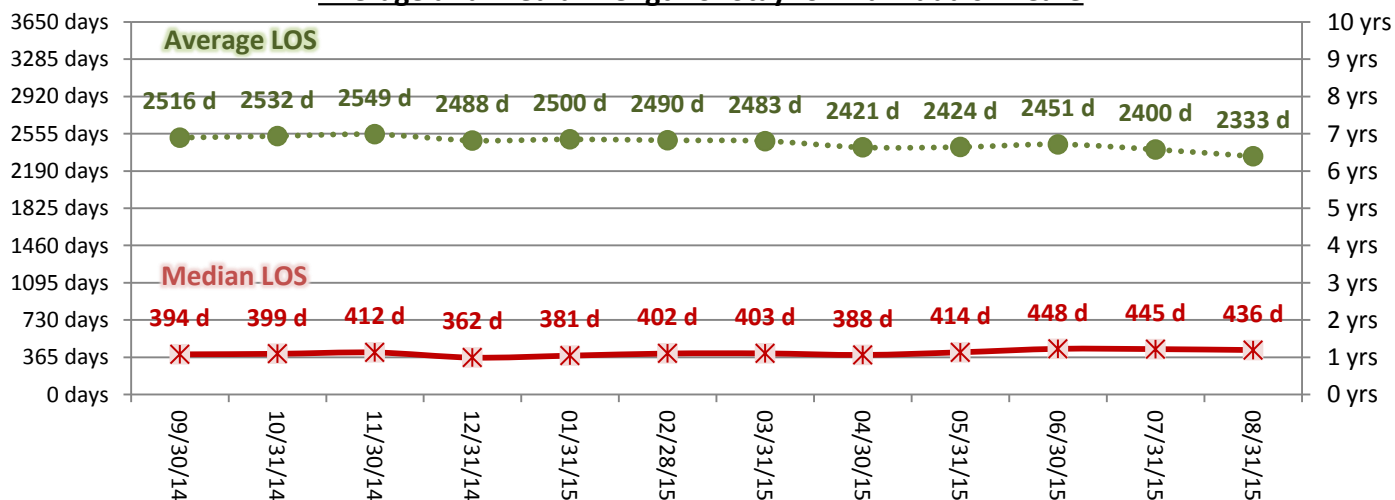
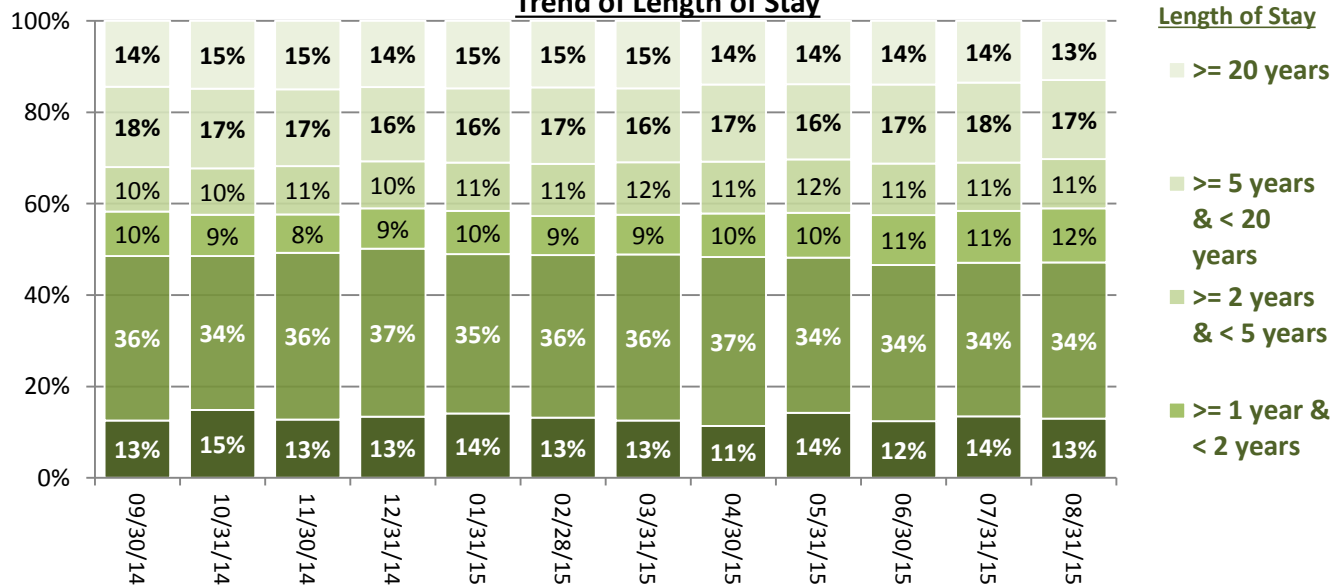
24. Demographics and Length of Stay

Trend of Gender Distribution



Trend of Age Distribution



Trend of Legal Status Distribution**Average and Median Length of Stay for Individuals in Care****Trend of Length of Stay**

Performance Related Information for Staff & Managers

1. Census, Admissions, Discharges & Transfers

Data Source: Avatar

Updated as of 09/16/15

Category		Sep-14	Oct-14	Nov-14	Dec-14	Jan-15	Feb-15	Mar-15	Apr-15	May-15	Jun-15	Jul-15	Aug-15	Monthly Average	Total (12mths)	Figure
Admissions	Civil	10	15	12	18	18	16	19	20	16	15	15	14	16	188	Figure 1
	Pre-trial	25	26	23	23	22	21	17	12	22	20	25	22	22	258	
	Post-trial	2	4	0	2	2	2	1	1	4	1	1	2	2	22	
	Total	37	45	35	43	42	39	37	33	42	36	41	38	39	468	
Discharges	Civil	17	26	13	13	19	23	18	15	22	25	17	17	19	225	Figure 2
	Pre-trial	15	17	21	20	22	16	19	17	16	15	16	15	17	209	
	Post-trial	3	4	3	1	1	2	3	6	3	4	0	2	3	32	
	Total	35	47	37	34	42	41	40	38	41	44	33	34	39	466	
Net Increase During Month	Civil	-7	-11	-1	5	-1	-7	1	5	-6	-10	-2	-3		-37	
	Pre-trial	10	9	2	3	0	5	-2	-5	6	5	9	7		49	
	Post-trial	-1	0	-3	1	1	0	-2	-5	1	-3	1	0		-10	
	Total	2	-2	-2	9	0	-2	-3	-5	1	-8	8	4		2	
All Individuals on Roll at End of Month		278	276	274	283	284	281	278	273	274	266	274	278	277		
a. Present on Unit		275	272	270	281	275	274	276	270	269	264	271	275	273		
b. On AL		3	4	4	2	9	7	2	3	5	2	3	3	4		
c. On UL		0	0	0	0	0	0	0	0	0	0	0	0	0		
All Individuals on Roll: Daily Average during Month*		283	276	272	277	284	280	274	274	272	270	270	275	276		Figure 3
a. Present on Unit		278	272	269	273	279	276	269	270	269	264	266	272	271		
b. On AL		5	4	3	4	5	4	5	4	3	6	4	3	3.8		
c. On UL		0	0	0	0	0	0	0	0	0	0	0	0	0.00		
Patient Days**		8326	8422	8078	8472	8610	7738	8348	8095	8349	7925	8247	8435	8254	99045	
Inter-Unit Transfers during Month		22	9	9	13	7	7	11	1	22	14	14	6	11	135	Figure 4
Medical Leaves Initiated during Month	Emergency	15	10	10	18	23	11	11	10	18	20	15	10	14	171	
	Non-Emer	68	62	71	61	59	55	71	79	81	96	95	89	74	887	
	Total	83	72	81	79	82	66	82	89	99	116	110	99	88	1058	
Non-Medical Leaves Initiated during Month		397	431	390	393	412	323	391	334	251	323	374	322	362	4341	
UL Initiated during Month		0	0	0	0	0	0	0	0	1	1	1	0	0	3	
Total Unique Patients Served during Month		312	318	310	315	326	320	317	306	314	305	305	311	313		
30 Day Readmission ***	Civil	0	5	0	0	3	3	1	2	1	2	1		2	18	
	Pre-trial	1	1	0	1	1	0	1	1	0	0	0		1	6	
	Post-trial	1	0	0	1	0	0	0	2	0	0	0		0	4	
	Total	2	6	0	2	4	3	2	5	1	2	1		3	28	

* This is the average number of individuals served on a given day for the respective month. Due to rounding from average calculation, numbers from its subcategories a, b, & c may not add up to the total number on this row.

** It counts the number of patients who are present on the unit and excludes those on authorized or unauthorized leave at 11:59pm on a given day.

*** Number of patients returning within 30 days of discharges that occurred during month.

Performance Related Information for Staff & Managers

2. Key Performance Indicators

Data Source: UI DB, MV DB, ADR DB, Restraint/Seclusion Log, and Avatar

Updated as of 09/16/15

Category	Sep-14	Oct-14	Nov-14	Dec-14	Jan-15	Feb-15	Mar-15	Apr-15	May-15	Jun-15	Jul-15	Aug-15	Monthly Average	NPR* (Jun-13)	Figure
30 Day Readmit (Discharge Cohort)**	Civil	0.0%	19.2%	0.0%	0.0%	15.8%	13.0%	5.6%	13.3%	4.5%	8.0%	5.9%	8.7%		Figure 5
	Pre-trial	6.7%	5.9%	0.0%	5.0%	4.5%	0.0%	5.3%	5.9%	0.0%	0.0%	0.0%	3.1%		
	Post-trial	33.3%	0.0%	0.0%	100.0%	0.0%	0.0%	0.0%	33.3%	0.0%	0.0%	#DIV/0!	13.6%		
	Combined	5.7%	12.8%	0.0%	5.9%	9.5%	7.3%	5.0%	13.2%	2.4%	4.5%	3.0%	6.6%	6.9%	
Number of Unusual Incidents*	190	217	208	238	240	198	193	192	274	219	230	202	217		Figure 6
Patient Unusual Incident Rate	21.4	24.6	23.5	26.2	25.8	24.6	21.8	22.0	30.7	25.9	26.7	22.1	24.6		Figure 7
UI by Severity	Catastrophe	0	0	0	0	0	0	0	0	0	0	0	0		Figure 9
	High	30	47	42	39	53	34	34	31	69	27	22	38		
	Medium	95	85	90	104	113	102	75	90	108	73	79	90		
	Low	65	85	76	95	74	62	84	71	97	119	129	89		
Physical Assault Incident Rate	5.3	8.0	5.2	7.0	8.4	7.5	6.9	5.8	9.2	6.2	5.8	5.3	6.7		
Selected Types of Incidents	Physical Assault	44	67	42	59	72	58	58	47	77	49	48	56		Figure 10
	Aggressive Behav.	66	65	71	78	73	63	46	59	93	59	83	69		
	Psych Emergency	56	67	58	72	89	72	47	62	96	25	39	59		
	Fall	25	30	31	35	27	33	27	18	32	28	31	29		
	Injury	37	36	39	37	41	32	33	32	50	24	36	36		
Physical Assaults by Severity	High	14	21	14	10	28	13	14	9	29	10	5	13		Figure 11
	Medium	18	21	17	21	26	30	20	16	23	21	12	20		
	Low	12	25	11	28	18	15	24	22	25	18	31	21		
Patient Injury Rate***	0.48	0.12	0.12	0.00	0.00	0.13	0.12	0.12	0.36	0.13	0.12	0.36	0.17	0.38	Figure 12
Patients with Major Injuries***	4	1	1	0	0	1	1	1	3	1	1	3	1		
Total Patients Injured***	30	27	27	24	31	22	23	19	29	17	26	20	25		
Total Staff Injured***	13	14	23	23	17	11	13	13	32	12	8	10	16		Figure 13
Patient Fall Rate	2.76	2.14	3.59	4.01	2.67	4.26	2.99	1.98	3.47	3.15	3.64	3.68	3.19		Figure 14
Total Patients who Fell	23	18	29	34	23	33	25	16	29	25	30	31	26		
Total Staff who Fell	6	2	3	3	1	3	4	2	5	3	1	2	3		
Percent of Patients Restrained	0.6%	0.3%	1.0%	1.3%	0.6%	1.3%	0.3%	7.5%	10.2%	8.2%	6.9%	6.1%	1.0%	5.8%	Figure 15
Percent of Patients Secluded	4.2%	2.8%	3.5%	2.5%	3.1%	3.8%	2.8%	2.9%	3.5%	3.3%	2.0%	4.8%	3.3%	2.4%	
Restraint Hours Rate	0.030	0.010	0.021	0.105	0.072	0.015	0.004	0.031	0.098	0.074	0.163	0.009	0.051	0.71	Figure 16
Seclusion Hours Rate	0.052	0.040	0.086	0.041	0.045	0.088	0.101	0.043	0.060	0.150	0.067	0.063	0.069	0.44	
Elopement Rate	0.00	0.00	0.00	0.00	0.00	0.00	0.00	0.00	0.12	0.13	0.12	0.00	0.03	0.13	Figure 17
Medication Variance Rate	3.60	2.73	1.73	0.83	1.16	5.56	10.54	2.22	2.16	1.51	2.06	1.42	2.95		Figure 18
Adverse Drug Reaction Rate	0.36	0.36	0.50	0.35	0.46	0.13	0.48	0.25	0.36	0.38	0.24	0.36	0.35		Figure 19
Missing Med-Admin Documentation	0.60%	0.61%	0.57%	0.58%	0.86%	0.87%	0.56%	0.54%	0.62%	0.93%	0.76%	0.50%	0.67%		Figure 20
Percent of Medication Refusal	6.48%	7.07%	7.51%	7.14%	7.45%	7.22%	6.89%	6.58%	7.23%	5.92%	5.88%	6.17%	6.80%		Figure 21
SiteFM Work Orders Completed within 3 days	71%	68%	68%	70%	72%	61%	73%	73%	65%	73%	67%	63%	69%		Figure 23
Total SiteFM Work Orders	587	562	444	466	521	506	498	487	436	561	543	515	511		
	829	825	655	661	721	831	678	667	667	768	816	821	745		

* National Public Rate, NASMHPD Research Institute, National Research Institute (NRI), Data as of June 2013, Published in November 2013.

** Percentage of patients returning within 30 days of discharges that occurred during month

*** Refer to the next page [UI & Medication]

Performance Related Information for Staff & Managers

3. Unusual Incident & Medication

Data Source: UI DB, MV DB, ADR DB, and Avatar

Updated as of 09/16/15

Category		Sep-14	Oct-14	Nov-14	Dec-14	Jan-15	Feb-15	Mar-15	Apr-15	May-15	Jun-15	Jul-15	Aug-15	Monthly Average	Total (12mths)	NPR* (Jun-13)
Unusual Incidents (excluding MV)**	Total UIs	190	217	208	238	240	198	193	192	274	219	230	202	217	2601	
	Major UIs Only	148	171	168	188	188	156	144	150	225	130	126	115	159	1909	
	Pt Involved UI Only	178	207	190	222	222	190	182	178	256	205	220	186	203	2436	
	Patient UI Rate	21.4	24.6	23.5	26.2	25.8	24.6	21.8	22.0	30.7	25.9	26.7	22.1	24.6		
	Unique Pts Involved in UI	107	143	122	122	139	115	115	107	138	98	132	111	121	1449	
Selected Types of Incidents	Physical Assault	44	67	42	59	72	58	58	47	77	49	48	45	56	666	
	Aggressive Behavior	66	65	71	78	73	63	46	59	93	59	83	76	69	832	
	Psych Emergency	56	67	58	72	89	72	47	62	96	25	39	28	59	711	
	Fall	25	30	31	35	27	33	27	18	32	28	31	33	29	350	
	Injury	37	36	39	37	41	32	33	32	50	24	36	31	36	428	
Physical Assault Rate		5.3	8.0	5.2	7.0	8.4	7.5	6.9	5.8	9.2	6.2	5.8	5.3	6.7		
UI by Severity	Catastrophe	0	0	0	0	0	0	0	0	0	0	0	0	0	0	
	High	30	47	42	39	53	34	34	31	69	27	22	22	38	450	
	Medium	95	85	90	104	113	102	75	90	108	73	79	65	90	1079	
	Low	65	85	76	95	74	62	84	71	97	119	129	115	89	1072	
Physical Assaults by Severity	High	14	21	14	10	28	13	14	9	29	10	5	4	13	171	
	Medium	18	21	17	21	26	30	20	16	23	21	12	19	20	244	
	Low	12	25	11	28	18	15	24	22	25	18	31	22	21	251	
Total Patients who Fell		23	18	29	34	23	33	25	16	29	25	30	31	26	35	
Patient Fall Rate		2.76	2.14	3.59	4.01	2.67	4.26	2.99	1.98	3.47	3.15	3.64	3.68	3.19		
Total Staff who Fell		6	2	3	3	1	3	4	2	5	3	1	2	3		
Total Patients Injured***		30	27	27	24	31	22	23	19	29	17	26	20	25	295	
Patients with Major Injuries***		4	1	1	0	0	1	1	1	3	1	1	3	1	17	
Patient Injury Rate***		0.48	0.12	0.12	0.00	0.00	0.13	0.12	0.12	0.36	0.13	0.12	0.36	0.17		0.38
Total Staff Injured**		13	14	23	23	17	11	13	13	32	12	8	10	16		
Total UIs Documented in Avatar		0	0	0	0	0	0	0	0	1	1	1	0	0	3	
Elopement Rate		0.00	0.00	0.00	0.00	0.00	0.00	0.00	0.00	0.12	0.13	0.12	0.00	0.03		0.13
Med Variance (MV) Reports**		30	23	14	7	10	43	88	18	18	12	17	12	24	292	
MV Rate		3.60	2.73	1.73	0.83	1.16	5.56	10.54	2.22	2.16	1.51	2.06	1.42	2.95		
Adverse Drug Reactions Reports		3	3	4	3	4	1	4	2	3	3	2	3	3	35	
ADR Rate		0.36	0.36	0.50	0.35	0.46	0.13	0.48	0.25	0.36	0.38	0.24	0.36	0.35		
Total Med Administrations Scheduled		#####	#####	#####	#####	#####	96178	103742	99674	101673	98847	101726	104695		1237520	
Total Missing Documentations		626	647	595	622	939	838	579	543	626	923	777	522		8237	
Percent of Missing Documentation		0.60%	0.61%	0.57%	0.58%	0.86%	0.87%	0.56%	0.54%	0.62%	0.93%	0.76%	0.50%		0.67%	
Total Medication Doses Refused		6712	7493	7823	7676	8164	6940	7145	6562	7352	5856	5977	6463		84163	
Percent of Medication Refusal		6.48%	7.07%	7.51%	7.14%	7.45%	7.22%	6.89%	6.58%	7.23%	5.92%	5.88%	6.17%		6.80%	
Total STAT Orders		178	154	138	139	220	135	104	144	252	159	141	138	159		Figure 21
Total STAT Events****		90	77	68	74	98	68	52	73	116	68	66	62	76		
Total Individuals Involved >=1 STAT		43	33	28	33	40	31	32	29	42	33	31	34	34		
Total Patients with >=3 STAT Events		9	11	11	8	7	8	3	13	15	7	7	7	9		

* National Public Rate, NASMHPD Research Institute, National Research Institute (NRI), Data as of June 2013, Published in November 2013.

** Numbers may change if any additional UI report is made after the data run date from UI database (around the 15th of the following month); According to the revised UI policy as of November 4, 2013, a medication variance (MV) incident became no longer considered to be an unusual incident, and a medication or vital sign refusal incident is not longer an UI as of May 2014. UI data for the past 12 months in this report has been updated to reflect this change and reanalyzed in order to show the UI trend in consistent logic.

*** Injury is broadly defined to include any type of injuries regardless of the cause or severity level. The total number of patients injured represents all of the reported injuries including minor injuries treated with first aid alone. However, the patient injury rate considers only the number of patient injuries that required beyond first-aid level treatment based on the NRI definition and the patient injury rate is the number of 'major' patient injuries per every 1000 inpatient days

**** One STAT event may involve more than one STAT order for the same patient. Any orders placed within 20 minute timeframe are considered to belong to one STAT event.

Performance Related Information for Staff & Managers

4. Restraint & Seclusion

Data Source: Restraint/Seclusion Log and UI DB (for # of total events and patients) and Avatar (for patient days/hours)

Updated as of 09/16/15

Category		Sep-14	Oct-14	Nov-14	Dec-14	Jan-15	Feb-15	Mar-15	Apr-15	May-15	Jun-15	Jul-15	Aug-15	Monthly Average	Total (12mths)	NPR* (Jun-13)
Number of Restraint Events	Mechanical	6	1	4	9	9	4	1	6	16	5	15	1	6.4	77	
	Physical Hold								42	61	35	26	28	38.4		
	Total								48	77	40	41	29	47.0		
Number of Unique Patients Restrained	Mechanical	2	1	3	4	2	4	1	3	7	5	4	1	3.1		
	Physical Hold								20	25	20	17	18	20.0		
	Total								23	32	25	21	19	24.0		
Percentage of Patients Restrained**	Mechanical	0.6%	0.3%	1.0%	1.3%	0.6%	1.3%	0.3%	1.0%	2.2%	1.6%	1.3%	0.3%	1.0%		5.8%
	Physical Hold								6.5%	8.0%	6.6%	5.6%	5.8%	6.5%		
	Total								7.5%	10.2%	8.2%	6.9%	6.1%	7.8%		
Total Restraint Hours (h:mm)**	Mechanical	6:00	2:00	4:06	21:26	14:56	2:46	0:50	5:19	18:37	13:22	31:37	0:05	10:05	121:04	
	Physical Hold								0:42	1:01	0:47	0:37	1:43	0:58		
	Total								6:01	19:38	14:09	32:14	1:48	14:46		
Restraint Hours Rate**	Mechanical	0.030	0.010	0.021	0.105	0.072	0.015	0.004	0.027	0.093	0.070	0.160	0.000	0.051		0.71
	Physical Hold								0.004	0.005	0.004	0.003	0.008	0.005		
	Total								0.031	0.098	0.074	0.163	0.009	0.075		
Number of Seclusion Events		17	12	19	12	15	20	15	15	20	21	14	19	16.6	199	
Number of Unique Patients Secluded		13	9	11	8	10	12	9	9	11	10	6	15	10.3		
Percentage of Patients Secluded		4.2%	2.8%	3.5%	2.5%	3.1%	3.8%	2.8%	2.9%	3.5%	3.3%	2.0%	4.8%	3.3%		2.4%
Total Seclusion Hours (h:mm)		10:22	8:01	16:36	8:18	9:24	16:21	20:15	8:24	12:02	28:28	13:18	12:46	13:41	164:15	
Seclusion Hours Rate		0.052	0.040	0.086	0.041	0.045	0.088	0.101	0.043	0.060	0.150	0.067	0.063	0.069		0.44

* National Public Rate, NASMHPD Research Institute, National Research Institute (NRI), Data as of June 2013, Published in November 2013.

** Restraint data prior to April 2015 includes only mechanical restraints. The Hospital's restraint policy has been revised to consider a physical hold a restraint and data as of April 2015 reflects this change. The duration of each physical hold event is counted as one (1) minute as a physical hold is ordered/used only as a temporary intervention that lasts less than a minute to break up any physical altercations or to administer emergency medications.

Performance Related Information for Staff & Managers

6. Major Unusual Incidents by Incident Location/Unit

Data Source: UI DB

Updated as of 09/16/15

Category		Sep-14	Oct-14	Nov-14	Dec-14	Jan-15	Feb-15	Mar-15	Apr-15	May-15	Jun-15	Jul-15	Aug-15	Monthly Average	Total (12mths)	Percent
Total Unusual Incidents		190	217	208	238	240	198	193	192	274	219	230	202	217	2601	100%
Incident Location	1A	4	11	12	9	5	5	11	13	16	18	8	8	10	120	5%
	1B	10	18	14	12	12	10	12	18	8	7	15	21	13	157	6%
	1C	18	32	14	24	28	25	7	7	33	22	8	19	20	237	9%
	1D	20	7	18	40	37	15	23	26	29	18	37	17	24	287	11%
	1E	21	25	15	26	15	12	12	24	37	13	27	16	20	243	9%
	1F	28	25	23	34	43	28	28	20	46	28	18	17	28	338	13%
	1G	20	13	7	7	11	12	7	15	12	14	20	21	13	159	6%
	2A	7	4	12	7	16	3	6	5	7	5	14	4	8	90	3%
	2B	8	5	15	2	2	3	3	4	5	3	5	3	5	58	2%
	2C	9	17	10	16	14	24	10	2	9	20	24	14	14	169	6%
	2D	17	18	26	22	19	19	33	24	22	24	23	23	23	270	10%
	TLC	15	26	26	23	21	31	27	16	25	32	15	17	23	274	11%
	Other	13	16	16	16	17	11	14	18	25	15	16	22	17	199	8%
Physical Assault		44	67	42	59	72	58	58	47	77	49	48	45	56	666	100%
Incident Location	1A	1	0	0	0	1	2	4	2	3	4	3	1	2	21	3%
	1B	2	4	2	3	0	1	0	1	0	0	0	3	1	16	2%
	1C	3	9	0	8	6	6	2	1	15	4	2	8	5	64	10%
	1D	11	4	3	5	10	4	7	7	6	3	9	2	6	71	11%
	1E	4	12	4	3	5	4	8	5	6	5	6	4	6	66	10%
	1F	5	8	9	19	15	13	10	8	20	14	8	4	11	133	20%
	1G	9	4	0	2	4	5	1	4	1	6	5	7	4	48	7%
	2A	0	1	1	2	5	1	0	1	0	0	1	0	1	12	2%
	2B	0	0	1	0	0	0	0	0	0	0	0	0	0	1	0%
	2C	2	4	6	5	7	10	4	0	3	3	6	3	4	53	8%
	2D	4	11	8	6	7	4	12	12	8	4	6	10	8	92	14%
	TLC - Intensive	0	7	5	4	8	6	9	2	7	5	2	3	5	58	9%
	TLC - Transitional	3	0	3	1	3	1	1	3	2	0	0	0	1	17	3%
	Other	0	3	0	1	1	1	0	1	6	1	0	0	1	14	2%

Performance Related Information for Staff & Managers

6. Major Unusual Incidents by Incident Location/Unit

Data Source: UI DB

Updated as of 09/16/15

Category		Sep-14	Oct-14	Nov-14	Dec-14	Jan-15	Feb-15	Mar-15	Apr-15	May-15	Jun-15	Jul-15	Aug-15	Monthly Average	Total (12mths)	Percent
Aggressive Behavior		66	65	71	78	73	63	46	59	93	59	83	76	69	832	125%
Incident Location	1A	1	2	1	3	0	0	0	1	0	2	1	1	1	12	2%
	1B	4	5	2	1	0	0	1	3	0	0	2	9	2	27	4%
	1C	7	10	3	7	10	12	2	2	9	9	3	7	7	81	12%
	1D	7	1	7	23	21	8	7	14	15	10	14	6	11	133	20%
	1E	11	8	7	13	7	5	1	12	21	4	11	7	9	107	16%
	1F	10	14	11	12	15	10	7	7	19	6	5	4	10	120	18%
	1G	8	0	2	0	0	2	1	6	8	3	10	11	4	51	8%
	2A	3	1	2	1	6	2	2	1	3	2	11	3	3	37	6%
	2B	4	2	11	0	0	0	0	0	0	0	1	0	2	18	3%
	2C	3	5	2	4	1	5	3	0	2	7	6	5	4	43	6%
	2D	2	5	11	8	5	7	11	6	6	5	12	10	7	88	13%
	TLC - Intensive	3	3	4	3	4	8	6	4	4	6	1	3	4	49	7%
	TLC - Transitional	1	4	5	1	3	2	2	3	5	4	4	3	3	37	6%
	Other	2	5	3	2	1	2	3	0	1	1	2	7	2	29	4%
Psych Emergency		56	67	58	72	89	72	47	62	96	25	39	28	59	711	107%
Incident Location	1A	0	1	0	3	1	1	0	1	0	0	1	0	1	8	1%
	1B	1	7	2	1	0	0	0	3	0	0	2	5	2	21	3%
	1C	2	12	0	4	8	7	4	1	19	2	4	2	5	65	10%
	1D	9	3	9	14	16	11	9	14	16	5	9	3	10	118	18%
	1E	16	14	10	15	11	7	5	17	20	5	7	3	11	130	20%
	1F	10	15	16	19	22	15	15	10	26	9	3	3	14	163	24%
	1G	12	3	0	0	1	2	1	4	2	1	5	3	3	34	5%
	2A	0	0	0	1	4	1	0	2	3	1	4	1	1	17	3%
	2B	0	0	5	0	0	0	0	0	0	0	0	0	0	5	1%
	2C	0	4	0	1	4	7	1	0	0	0	0	2	2	19	3%
	2D	3	5	11	13	14	9	3	7	3	2	1	2	6	73	11%
	TLC - Intensive	0	2	2	1	5	10	6	1	1	0	2	1	3	31	5%
	TLC - Transitional	2	0	2	0	3	0	1	2	4	0	1	1	1	16	2%
	Other	1	1	1	0	0	2	2	0	2	0	0	2	1	11	2%

Performance Related Information for Staff & Managers

6. Major Unusual Incidents by Incident Location/Unit

Data Source: UI DB

Updated as of 09/16/15

Category		Sep-14	Oct-14	Nov-14	Dec-14	Jan-15	Feb-15	Mar-15	Apr-15	May-15	Jun-15	Jul-15	Aug-15	Monthly Average	Total (12mths)	Percent
Fall		25	30	31	35	27	33	27	18	32	28	31	33	29	350	100%
Incident Location	1A	2	4	9	3	3	2	5	0	8	8	3	3	4	50	14%
	1B	4	4	5	4	3	6	3	2	2	5	9	8	5	55	16%
	1C	0	5	2	8	2	0	3	1	2	0	0	0	2	23	7%
	1D	3	2	2	1	1	0	2	4	1	0	1	2	2	19	5%
	1E	1	2	2	1	0	2	0	0	1	2	2	3	1	16	5%
	1F	2	1	2	2	7	4	3	1	2	1	6	2	3	33	9%
	1G	1	2	1	1	2	4	1	1	2	4	1	4	2	24	7%
	2A	1	0	0	2	0	0	1	1	2	0	2	0	1	9	3%
	2B	2	2	1	0	0	1	1	2	2	1	1	3	1	16	5%
	2C	0	1	0	5	3	5	0	0	0	1	1	0	1	16	5%
	2D	5	2	1	1	1	3	3	2	3	3	1	2	2	27	8%
	TLC - Intensive	1	1	1	1	2	1	1	1	4	1	1	2	1	17	5%
	TLC - Transitional	1	1	3	3	0	1	0	0	0	0	1	1	1	11	3%
	Other	2	3	2	3	3	4	4	3	3	2	2	3	3	34	10%
Physical Injury		37	36	39	37	41	32	33	32	50	24	36	31	36	428	100%
Incident Location	1A	1	0	1	0	2	2	2	2	3	1	2	0	1	16	4%
	1B	1	2	3	1	0	1	3	5	2	0	0	3	2	21	5%
	1C	1	6	0	3	5	4	3	0	11	2	2	8	4	45	11%
	1D	8	3	3	7	4	1	7	5	6	3	6	4	5	57	13%
	1E	2	7	4	1	0	2	1	2	5	3	2	3	3	32	7%
	1F	12	5	8	8	5	8	7	3	8	6	5	3	7	78	18%
	1G	0	3	1	2	3	1	0	1	0	1	2	2	1	16	4%
	2A	1	0	2	2	0	1	0	2	1	0	1	0	1	10	2%
	2B	1	0	0	0	0	0	0	1	1	1	1	1	1	6	1%
	2C	2	2	2	4	6	6	1	0	1	2	3	0	2	29	7%
	2D	4	2	7	5	5	1	1	4	3	3	3	3	3	41	10%
	TLC - Intensive	0	4	3	1	7	1	5	2	4	1	5	0	3	33	8%
	TLC - Transitional	2	0	3	2	1	2	0	0	2	0	0	0	1	12	3%
	Other	2	2	2	1	3	2	3	5	3	1	4	4	3	32	7%

* Not every incident is a major incident. This counts only those incidents that were classified to be major based on the policy.

Performance Related Information for Staff & Managers

5. Demographic Information of Individuals in Care

Data Source: Avatar

Updated as of 09/16/15

Category	Sub-group	Sep-14	Oct-14	Nov-14	Dec-14	Jan-15	Feb-15	Mar-15	Apr-15	May-15	Jun-15	Jul-15	Aug-15	Monthly Average	Percent*
Total Active (on Roll) at End of Month*		278	276	274	283	284	281	278	273	274	266	274	278	277	
Gender	Female	92	92	87	93	90	89	87	90	87	81	85	85	88	31.9%
	Male	186	184	187	190	194	192	191	183	187	185	189	193	188	68.1%
Age	Median Age (Years)	55 yrs	56 yrs	55 yrs	55 yrs	55 yrs	56 yrs	56 yrs	55 yrs	56 yrs	55 yrs	55 yrs	55 yrs	55 yrs	
	<30 years old	29	24	30	28	30	37	38	43	40	38	36	44	35	12.6%
	>=30 and <40 years old	34	34	28	34	34	31	29	28	29	32	39	32	32	11.6%
	>=40 and <50 years old	34	32	31	36	35	32	32	32	34	33	33	26	33	11.8%
	>=50 and <60 years old	84	81	84	81	79	71	69	67	63	61	63	72	73	26.4%
	>=60 years old	97	105	101	104	106	110	110	103	108	102	103	104	104	37.8%
Legal Status of Individuals on Roll at End of Month	Emergency	27	22	21	29	27	27	38	45	38	32	32	25	30	10.9%
	Inpatient Commitment	34	35	35	35	36	36	33	35	34	34	33	33	34	12.4%
	Outpatient Commitment	23	22	27	27	27	28	17	16	21	22	22	28	23	8.4%
	Voluntary	37	35	32	32	37	34	38	35	37	36	37	37	36	12.9%
	Non-Protesting	0	0	0	0	1	1	0	0	0	0	0	0	0	0.1%
	Civil Sub-total	121	114	115	123	128	126	126	131	130	124	124	123	124	44.7%
	DC Exam	31	40	35	43	40	41	38	38	39	30	35	36	37	13.4%
	Mentally Incompetent	36	31	36	28	25	23	25	20	20	30	32	36	29	10.3%
	Forensic Pre-trial Sub-total	67	71	71	71	65	64	63	58	59	60	67	72	66	23.7%
	NGBRI - DC	74	76	74	75	76	76	74	70	72	69	70	71	73	26.4%
	NGBRI - US	11	10	10	10	10	10	10	9	9	9	9	8	10	3.5%
	NGBRI - VI	1	1	1	1	1	1	1	1	1	1	1	1	1	0.4%
Length of Stay	Dual Commitment	2	2	1	1	1	1	1	1	0	0	0	0	1	0.3%
	Sexual Psychopath (Miller Act)	2	2	2	2	3	3	3	3	3	3	3	3	3	1.0%
	Forensic Post-trial Sub-total	90	91	88	89	91	91	89	84	85	82	83	83	87	31.5%
	Median LOS (Days)	394 d	399 d	412 d	362 d	381 d	402 d	403 d	388 d	414 d	448 d	445 d	436 d	407 d	
	Average LOS (Days)	2516 d	2532 d	2549 d	2488 d	2500 d	2490 d	2483 d	2421 d	2424 d	2451 d	2400 d	2333 d	2466 d	
	<30 Days	35	41	35	38	40	37	35	31	39	33	37	36	36	13.2%
	>=30 ~ <365 Days	100	93	100	104	99	100	101	101	93	91	92	95	97	35.2%
Length of Stay	>= 1 Year & < 2 Years	27	25	23	25	27	24	24	26	27	29	31	33	27	9.7%
	>= 2 Years & < 5 Years	27	28	29	29	30	32	32	31	32	30	29	30	30	10.8%
	>= 5 Years & < 20 Years	49	48	46	46	46	47	45	46	45	46	48	48	47	16.9%
	>= 20 Years	40	41	41	41	42	41	41	38	38	37	37	36	39	14.3%

* Counts the total number of individuals who are on the hospital roll at end of each month. This number serves as denominator to calculate percentage of each group.

Performance Related Information for Staff & Managers

6. Demographic Information of Individuals in Care

Data Source: Avatar

Updated as of 09/16/15

Category	Sub-group	Sep-14	Oct-14	Nov-14	Dec-14	Jan-15	Feb-15	Mar-15	Apr-15	May-15	Jun-15	Jul-15	Aug-15	Monthly Average	Percent*
Total Active (on Roll) at End of Month*		278	276	274	283	284	281	278	273	274	266	274	278	277	
Gender	Female	33%	33%	32%	33%	32%	32%	31%	33%	32%	30%	31%	31%	32%	
	Male	67%	67%	68%	67%	68%	68%	69%	67%	68%	70%	69%	69%	68%	
Age	Median Age (Years)	55 yrs	56 yrs	55 yrs	55 yrs	55 yrs	56 yrs	56 yrs	55 yrs	56 yrs	55 yrs	55 yrs	55 yrs	55 yrs	
	<30 yrs	10%	9%	11%	10%	11%	13%	14%	16%	15%	14%	13%	16%	13%	
	>=30 and <40 yrs	12%	12%	10%	12%	12%	11%	10%	10%	11%	12%	14%	12%	12%	
	>=40 and <50 yrs	12%	12%	11%	13%	12%	11%	12%	12%	12%	12%	12%	9%	12%	
	>=50 and <60 yrs	30%	29%	31%	29%	28%	25%	25%	25%	23%	23%	23%	26%	26%	
	>=60 yrs	35%	38%	37%	37%	37%	39%	40%	38%	39%	38%	38%	37%	38%	
Legal Status of Individuals on Roll at End of Month	Emergency	10%	8%	8%	10%	10%	10%	14%	16%	14%	12%	12%	9%	11%	
	Inpatient Commitment	12%	13%	13%	12%	13%	13%	12%	13%	12%	13%	12%	12%	12%	
	Outpatient Commitment	8%	8%	10%	10%	10%	10%	6%	6%	8%	8%	8%	10%	8%	
	Voluntary	13%	13%	12%	11%	13%	12%	14%	13%	14%	14%	14%	13%	13%	
	Non-Protesting	0%	0%	0%	0%	0%	0%	0%	0%	0%	0%	0%	0.0%	0%	
	Civil Sub-total	44%	41%	42%	43%	45%	45%	45%	48%	47%	47%	45%	44%	45%	
	DC Exam	11%	14%	13%	15%	14%	15%	14%	14%	14%	11%	13%	13%	13%	
	Mentally Incompetent	13%	11%	13%	10%	9%	8%	9%	7%	7%	11%	12%	13%	10%	
	Forensic Pre-trial Sub-total	24%	26%	26%	25%	23%	23%	23%	21%	22%	23%	24%	26%	24%	
	NGBRI - DC	27%	28%	27%	27%	27%	27%	27%	26%	26%	26%	26%	26%	26%	
	NGBRI - US	4%	4%	4%	4%	4%	4%	4%	3%	3%	3%	3%	3%	3%	
	NGBRI - VI	0%	0%	0%	0%	0%	0%	0%	0%	0%	0%	0%	0%	0%	
	Dual Commitment	1%	1%	0%	0%	0%	0%	0%	0%	0%	0%	0%	0%	0%	
	Sexual Psychopath (Miller Ac	1%	1%	1%	1%	1%	1%	1%	1%	1%	1%	1%	1%	1%	
	Forensic Post-trial Sub-total	32%	33%	32%	31%	32%	32%	32%	31%	31%	31%	30%	30%	32%	
Length of Stay	Median LOS (Days)	394 d	399 d	412 d	362 d	381 d	402 d	403 d	388 d	414 d	448 d	445 d	436 d	407 d	
	Average LOS (Days)	2516 d	2532 d	2549 d	2488 d	2500 d	2490 d	2483 d	2421 d	2424 d	2451 d	2400 d	2333 d	2466 d	
	<30 days	13%	15%	13%	13%	14%	13%	13%	11%	14%	12%	14%	13%	13%	
	>=30 days & <365 days	36%	34%	36%	37%	35%	36%	36%	37%	34%	34%	34%	34%	35%	
	>= 1 year & < 2 years	10%	9%	8%	9%	10%	9%	9%	10%	10%	11%	11%	12%	10%	
	>= 2 years & < 5 years	10%	10%	11%	10%	11%	11%	12%	11%	12%	11%	11%	11%	11%	
	>= 5 years & < 20 years	18%	17%	17%	16%	16%	17%	16%	17%	16%	17%	18%	17%	17%	
	>= 20 years	14%	15%	15%	14%	15%	15%	15%	14%	14%	14%	14%	13%	14%	

* Counts the total number of individuals who are on the hospital roll at end of each month. This number serves as denominator to calculate percentage of each group.