

**Government of the District of Columbia
Department of Behavioral Health (DBH)**



Performance Related Information for Staff and Managers

PRISM

OCTOBER 2014

Table of Contents



1.	Admissions to SEH	1
2.	Discharges from SEH	1
3.	Average Daily Census	2
4.	Transfers	2
5.	30-Day Readmission Rate	2
6.	Unusual Incidents.....	3
7.	Patient-Involved Unusual Incidents.....	3
8.	Admissions vs. Patient UI Rate	4
9.	Unusual Incidents by Severity	4
10.	Selected Types of Incidents	4
11.	Physical Assaults by Severity	5
12.	Patient Injuries.....	5
13.	Staff Injuries.....	5
14.	Percent of Patients Restrained or Secluded.....	6
15.	Restraint Hours Rate & Seclusion Hours Rate	6
16.	Eloperments	6
17.	Reported Medication Variance Events	7
18.	Reported Adverse Drug Reactions.....	7
19.	Percent of Missing Documentation on Med-Administration	8
20.	Medication Refusal Rate*	8
21.	Number of STAT Events and Individuals Involved	8
22.	Demographics and Length of Stay	9
<input type="checkbox"/>	Appendix 1) Table – Census, Admissions & Discharges	
<input type="checkbox"/>	Appendix 2) Table – Key Performance Indicators	
<input type="checkbox"/>	Appendix 3) Table – Unusual Incident & Medication	
<input type="checkbox"/>	Appendix 4) Table – Restraint & Seclusion	
<input type="checkbox"/>	Appendix 5) Table – Demographic Information of Individuals in Care	
<input type="checkbox"/>	Appendix 6) Table – Unusual Incidents by Unit	

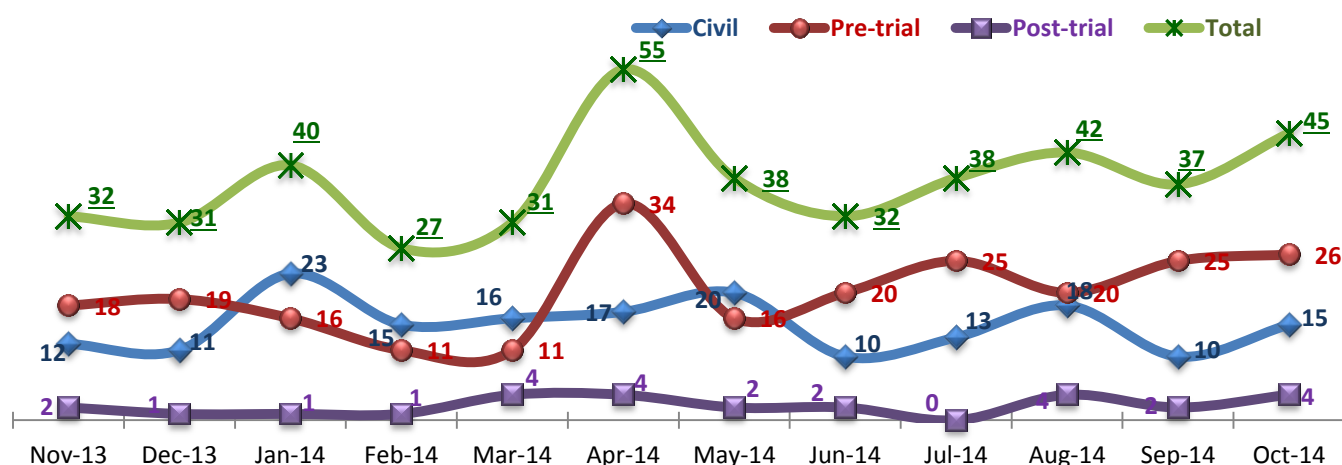
11/17/2014

Office of Statistics and Reporting (OSR)

Key Trends: Admission, Discharge, Transfer, Census, and Readmissions (1~6)

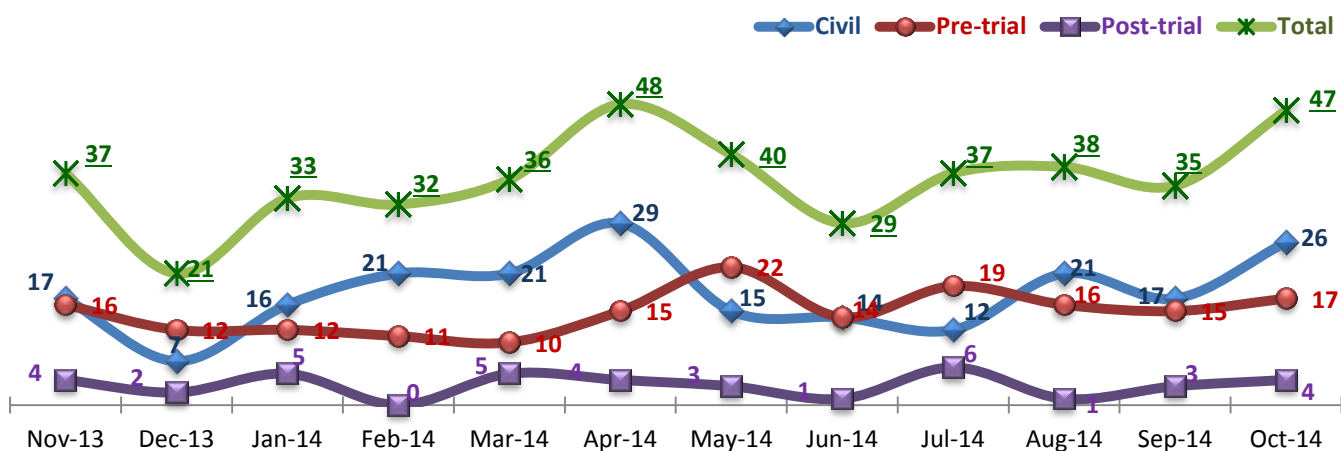
- In the month of October 2014, the number of admissions (45) increased by eight (8) from September (37), but as the number of discharges (47) exceeded the number of admissions, the average daily census (ADC) declined from 283 in September to 276 in October. This is still the 2nd highest ADC in the last 12 months.
- The number of pre-trial admissions for competency evaluation consistently recorded 20 or above in each month since June 2014 while the number of monthly civil admissions remained below 20.
- The number of inter-unit transfers in October (9) is lower than that of September (22). A major restructuring of units and treatment teams took place on October 1, 2014 in order to accommodate needs of changing population served at the Hospital and any inevitable technical transfers directly triggered by this restructuring process is not included herein.
- There were two individuals who returned within 30-days from September discharges: one from a pre-trial discharge and the other from a post-trial discharge. The 30-day readmission rate in FY14 is 2.3%, which is far below the NPR (6.9%)¹.

1. Admissions to SEH



* Number of admissions to SEH inpatient program, including transfers from outpatient to inpatient program.

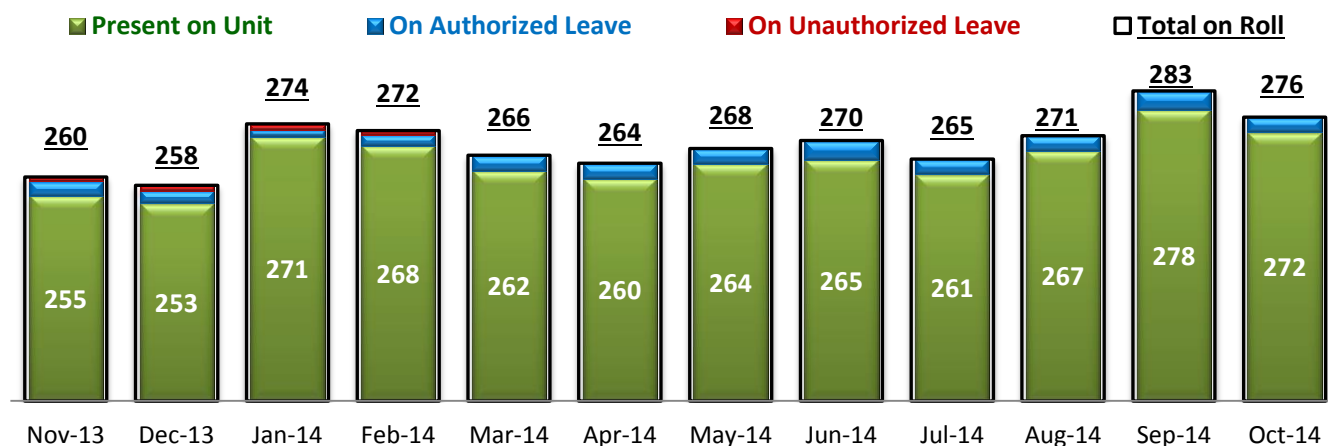
2. Discharges from SEH



* Number of discharges from SEH inpatient program, including transfers from inpatient to outpatient program.

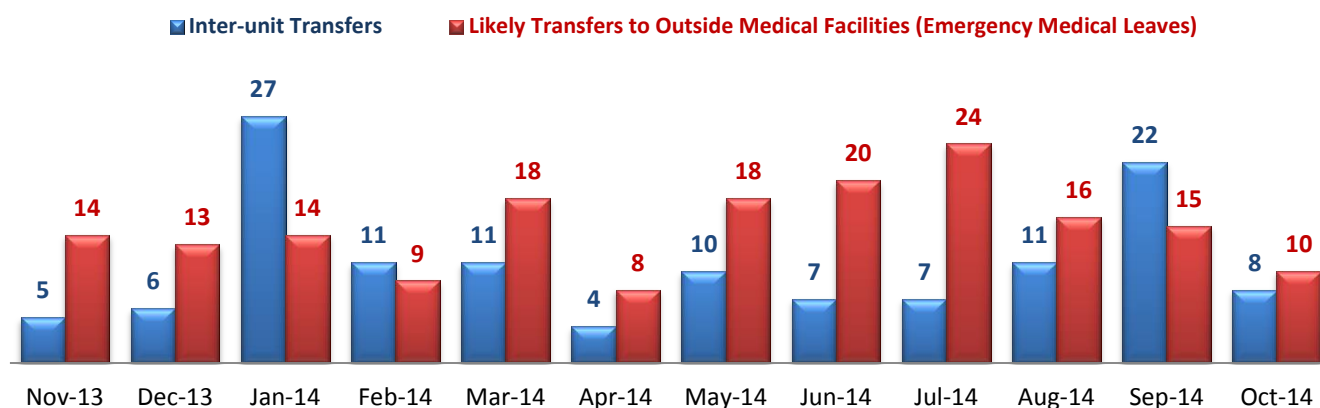
¹ NPR: National Public Rate as of June 2013 was published in November 2013 by National Association of State Mental Health Program Directors Research Institute (NRI), based on data collected from a number of state psychiatric hospitals nationwide.

3. Average Daily Census



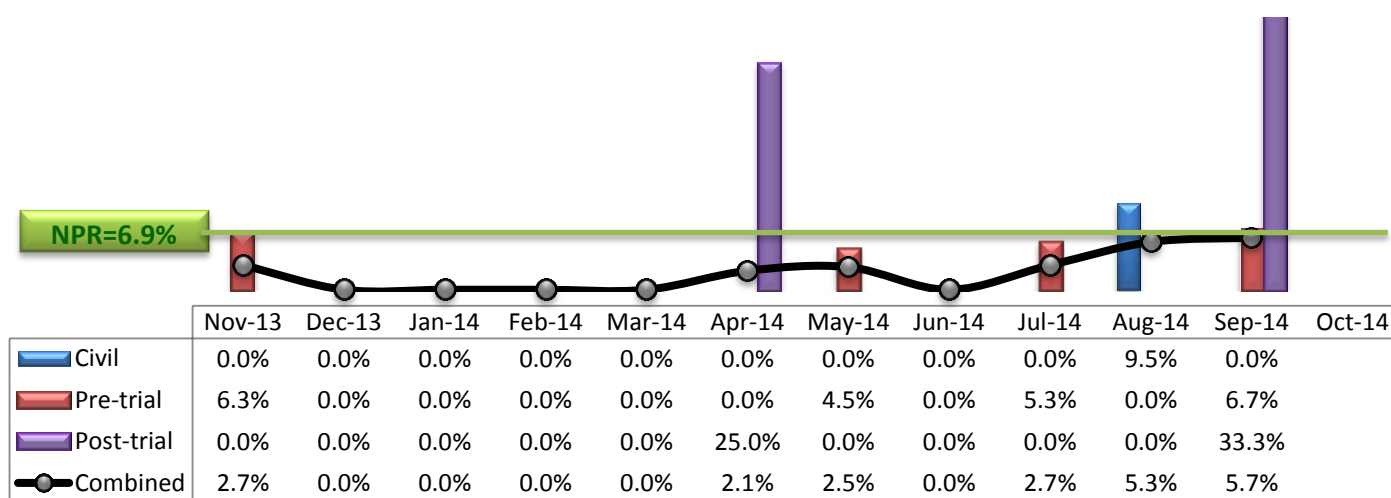
* Data above is the daily average number of individuals counted at 11:59 PM every day during each month.

4. Transfers



* Number of inter-unit transfers that occurred during month and number of emergency medical leaves that were initiated during month.

5. 30-Day Readmission Rate



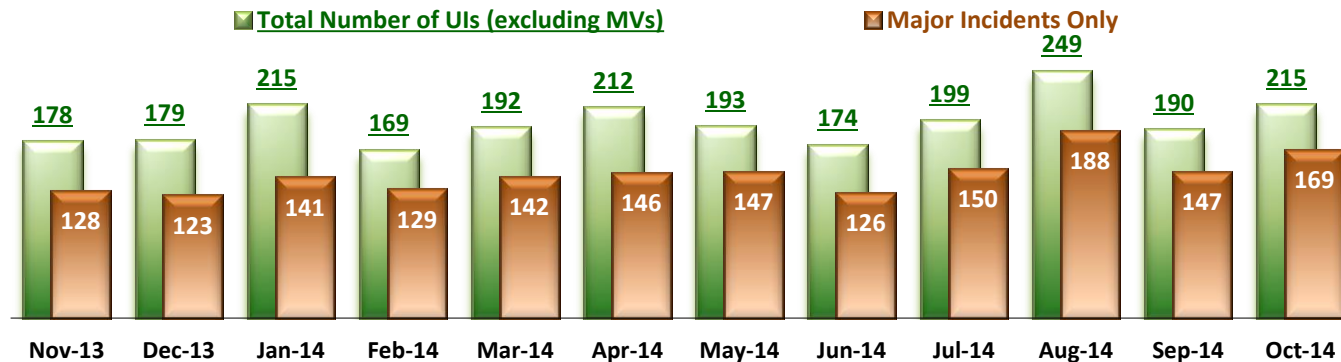
* Percent of discharges that returned to SEH within 30 days of discharges. It does not include those who may have been re-hospitalized at another psychiatric facility. This measure requires 30-day observation following discharge.

** The post-trial denominators (discharges) per month range only between one and six, making the monthly re-admission rate high when there is any. For example, in September 14, there were three post trial discharges, of which one (33%) was readmitted within 30 days.

Key Trends: Unusual Incidents (6~16)

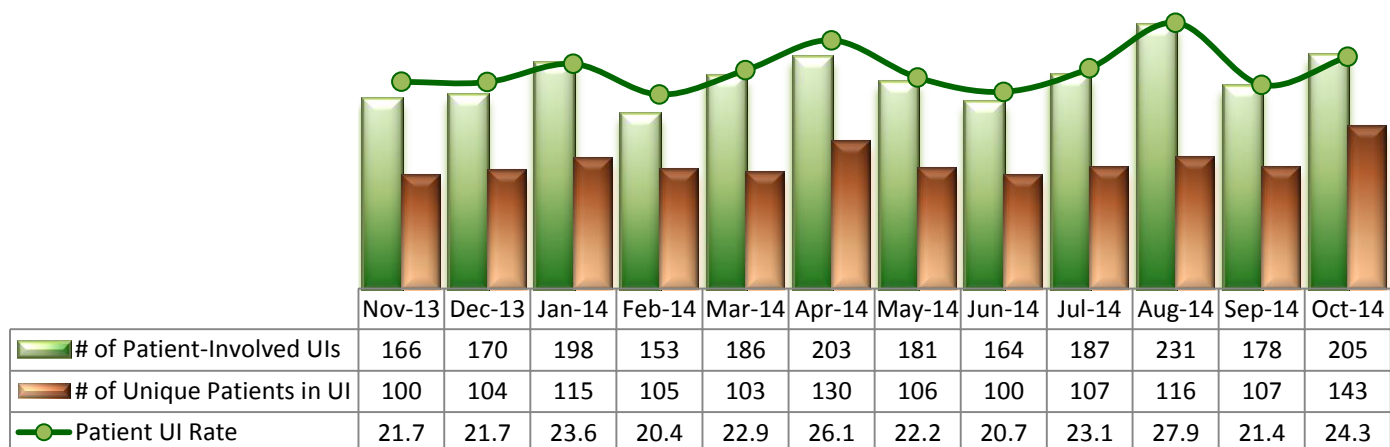
- The total number of unusual incidents (UIs) and the patient UI rate increased mirroring the increase in the number of admissions in October: the number of UIs increased from 190 in September to 215 in October; and the patient UI rate increased from 21 in September to 24 in October.
- The increase of UIs in October appears at both high and low severity levels. The number of incidents involving aggressive behaviors, physical assaults, psychiatric emergencies, and falls all increased. Particularly, the number of physical assaults at high severity (21) in October 2014 reached its highest level since October 2011 when 24 physical assaults were classified as high severity UIs. This increase is due in part to a significant increase of assaults involving code 13 but without injury since any incident involving code 13 is considered to be a high severity UI according to the policy. Of those 21, only 38% involved injuries. This is not consistent with the FY14 trend, where 67% of high severity assaults involved injuries. Overall the total number of physical assaults, particularly high severity ones considerably increased in FY14 (85) compared with FY13 (45).
- Patient injuries, including major injuries, slightly decreased while staff injuries increased by one in October.
- There was only one individual with a restraint event and the number of individuals involved in seclusion events also declined in October 2014. However, the percentage of unique individuals secluded (2.8%) remained above NPR (2.4%) since August 2014. Seclusion/restraint events frequently involve individuals in pre-trial legal status and the recent high number of pre-trial admissions and their frequent medication refusals may have contributed to this trend: 63% of seclusion/restraint events between August and October 2014 involved pre-trial admissions. The seclusion and restraint hours remained far below NPR.
- There have been no elopement since July 2014 and the elopement rate in the past 12 months is 0.09 per 1000 patient days, which is lower than the national average (NPR 0.13).

6. Unusual Incidents



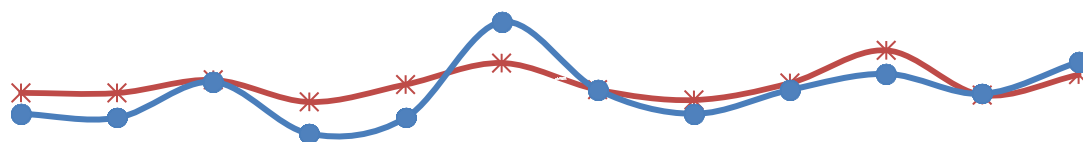
* A medication or vital sign refusal is no longer a UI since May 2014 and data above prior to May 2014 also excludes those incidents.

7. Patient-Involved Unusual Incidents



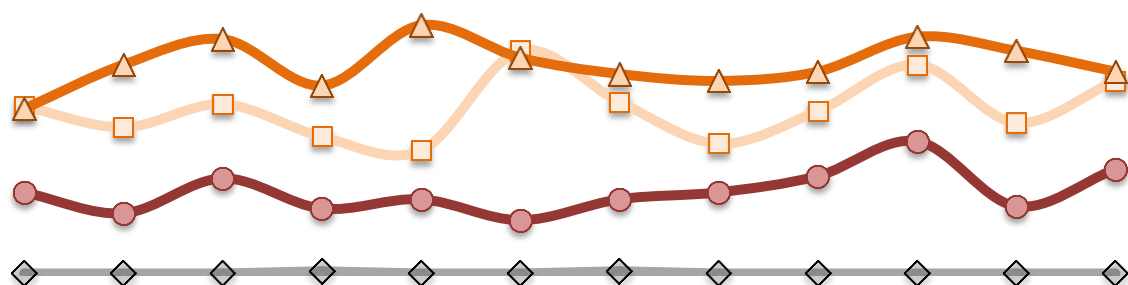
* The patient UI rate is the number of patient-involved unusual incidents reported for every 1000 inpatient days.

8. Admissions vs. Patient UI Rate



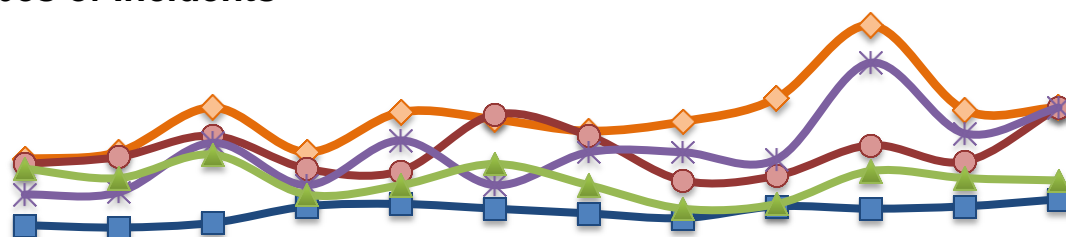
	Nov-13	Dec-13	Jan-14	Feb-14	Mar-14	Apr-14	May-14	Jun-14	Jul-14	Aug-14	Sep-14	Oct-14
—*— Patient UI Rate	21.7	21.7	23.6	20.4	22.9	26.1	22.2	20.7	23.1	27.9	21.4	24.3
—●— Admission	32	31	40	27	31	55	38	32	38	42	37	45

9. Unusual Incidents by Severity



	Nov-13	Dec-13	Jan-14	Feb-14	Mar-14	Apr-14	May-14	Jun-14	Jul-14	Aug-14	Sep-14	Oct-14
□ 1) Low	72	63	73	59	53	96	74	56	70	90	65	83
△ 2) Medium	71	90	101	81	107	93	86	83	87	102	96	87
● 3) High	35	26	41	28	32	23	32	35	42	57	29	45
◆ 4) Catstrp	0	0	0	1	0	0	1	0	0	0	0	0
Total UI	178	179	215	169	192	212	193	174	199	249	190	215

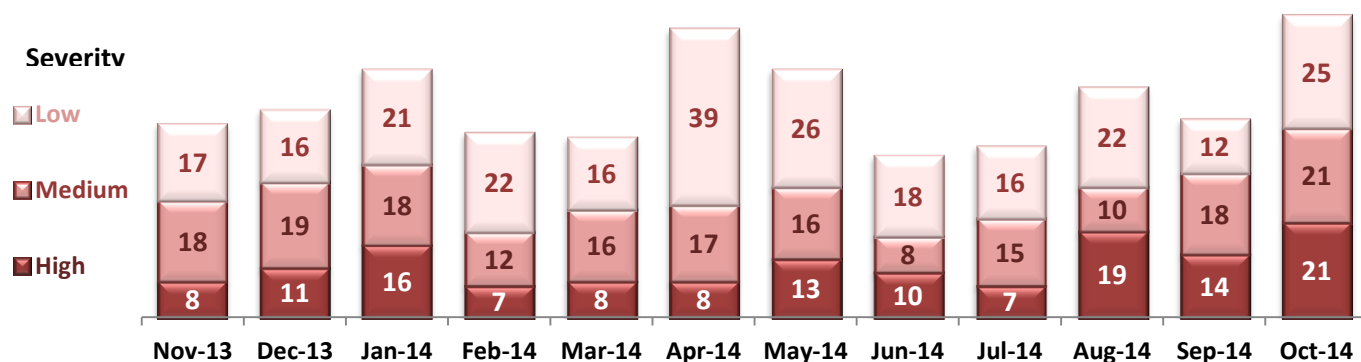
10. Selected Types of Incidents



	Nov-13	Dec-13	Jan-14	Feb-14	Mar-14	Apr-14	May-14	Jun-14	Jul-14	Aug-14	Sep-14	Oct-14
◆ Aggressive Behavior	45	48	67	48	65	62	57	61	71	102	66	67
● Physical Assault	43	46	55	41	40	64	55	36	38	51	44	67
✱ Pysch Emerg.	30	31	52	34	53	34	48	48	45	86	56	67
■ Fall	17	16	18	25	26	24	22	20	25	24	25	28
▲ Injury	41	37	47	30	34	43	34	24	26	40	37	36

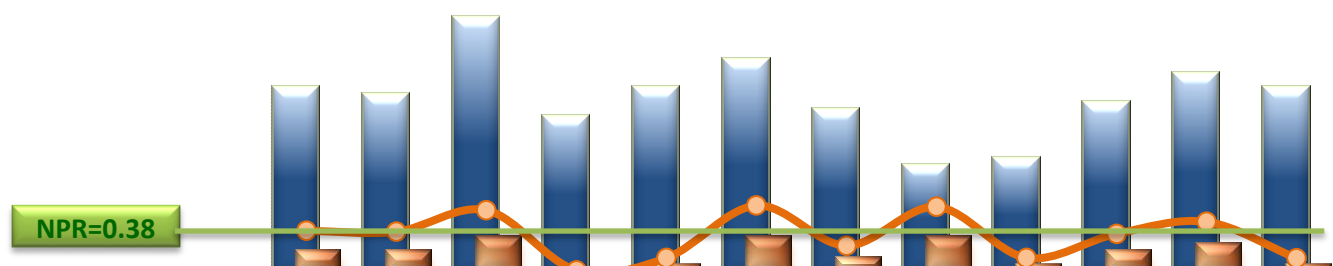
* These are incident types that are frequently reported. Some incidents may be counted in multiple categories. For example, a physical assault incident that accompanied psychiatric emergency and injury is counted under psychiatric emergency and injury as well as under physical assault. Injury is broadly defined to include any type of injuries regardless of the cause or severity level.

11. Physical Assaults by Severity



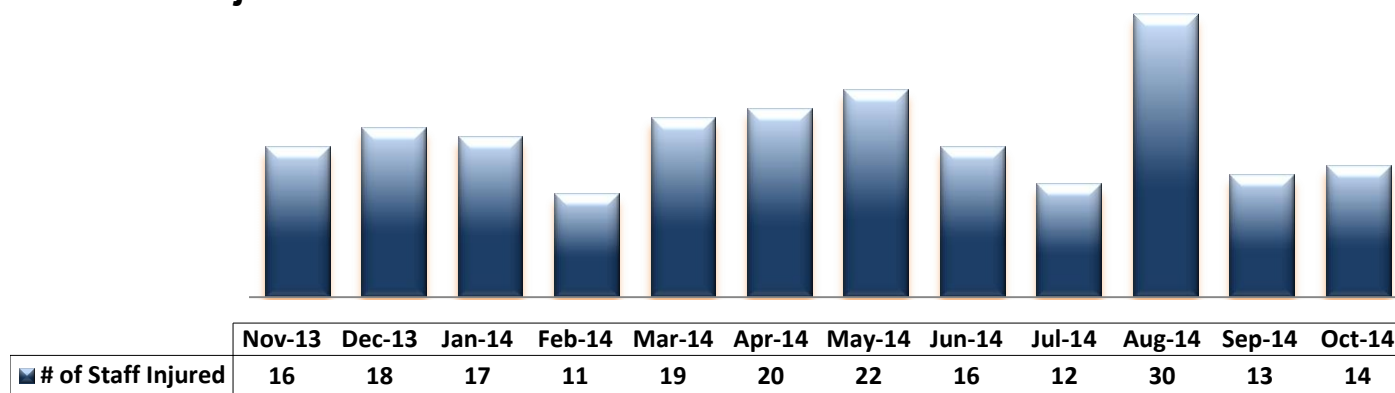
* Any physical assault that accompanies a code 13 or results in extensive injury needing off-unit treatment or transfer to ER is considered to be high severity, any physical assault that causes a minor injury that can be treated on unit is considered to be medium severity, and physical assault events that result in no injury are considered to be low severity.

12. Patient Injuries



* Injury is broadly defined to include any type of injuries regardless of the cause or severity level. The total number of patients injured represents all of the reported injuries including minor injuries treated with first aid alone. However, the patient injury rate considers only the number of patient injuries that required beyond first-aid level treatment based on the NRI definition and the patient injury rate is the number of 'major' patient injuries per every 1000 inpatient days

13. Staff Injuries

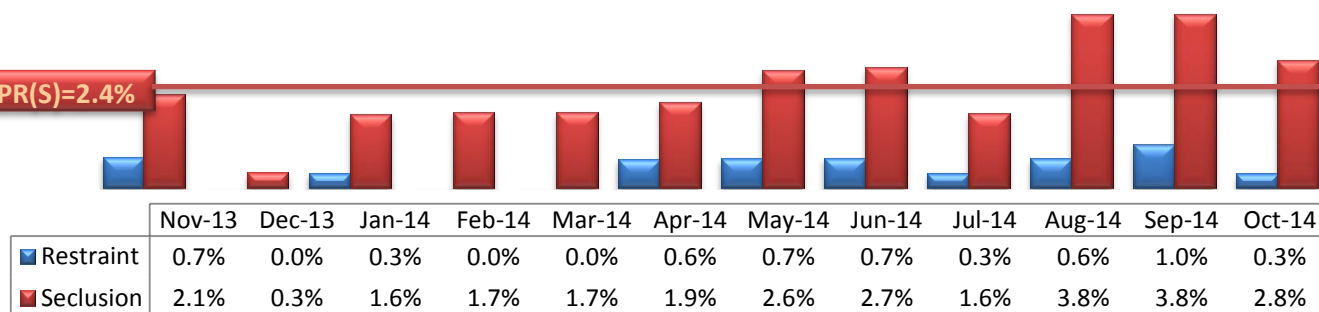


* Injury is broadly defined to include any type of injuries regardless of the cause or severity level. The total number of staff injured represents all of the reported staff injuries including minor injuries treated with first aid alone.

14. Percent of Patients Restrained or Secluded

NPR(R)=5.8%

NPR(S)=2.4%

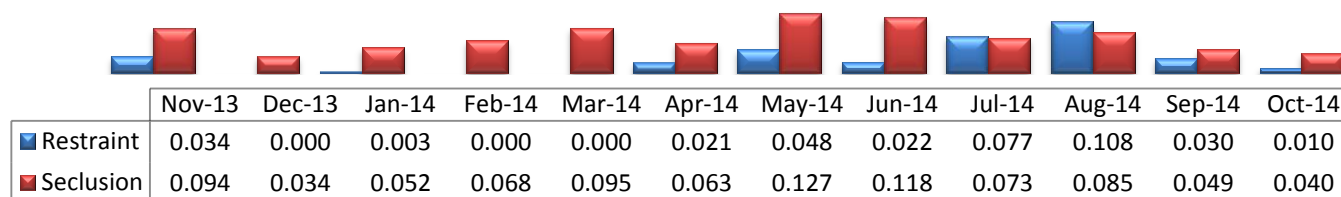


* Percent of unique patients who were restrained at least once and percent of unique patients who were secluded at least once. The denominator includes all individuals who were served in care >=1 day during month.

15. Restraint Hours Rate & Seclusion Hours Rate

NPR(R)=0.71

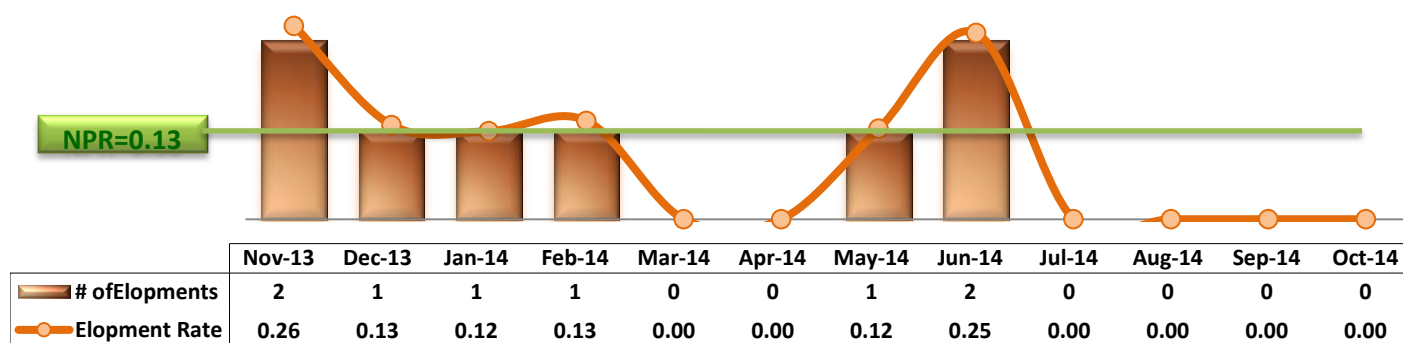
NPR(S)=0.44



* Restraint/Seclusion Hours Rate: Number of hours spent in restraint/seclusion for every 1000 inpatient hours.

16. Elopements

NPR=0.13

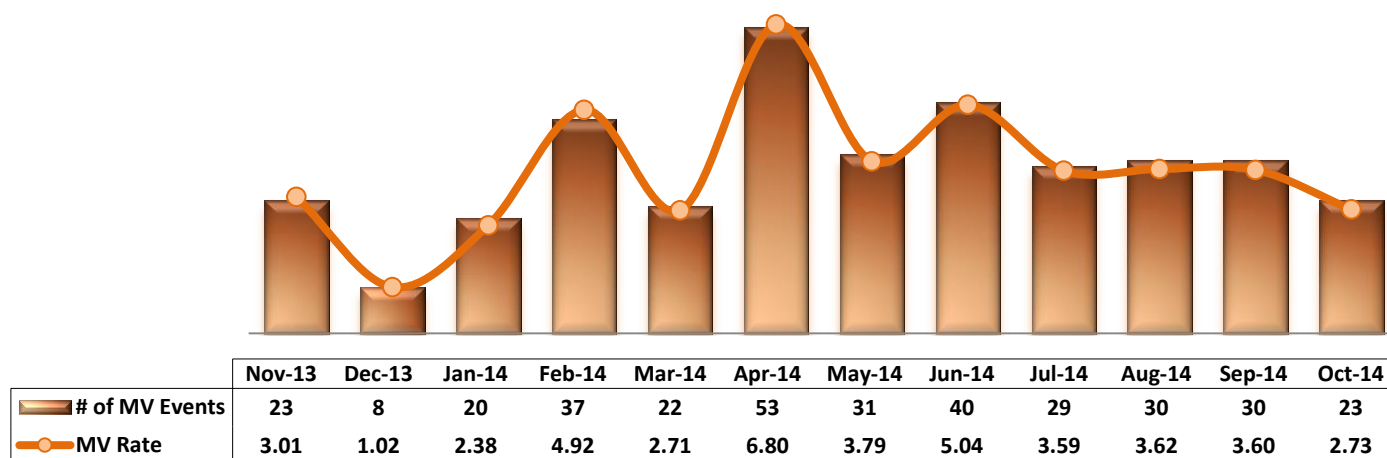


* It counts the total number of unauthorized leaves for any duration that were initiated during month and were recorded in Avatar. The elopement rate is the number of those unauthorized leaves that occurred for every 1000 inpatient days.

Key Trends: Medication Documentation, Medication Variance, ADR, and STAT (17~21)

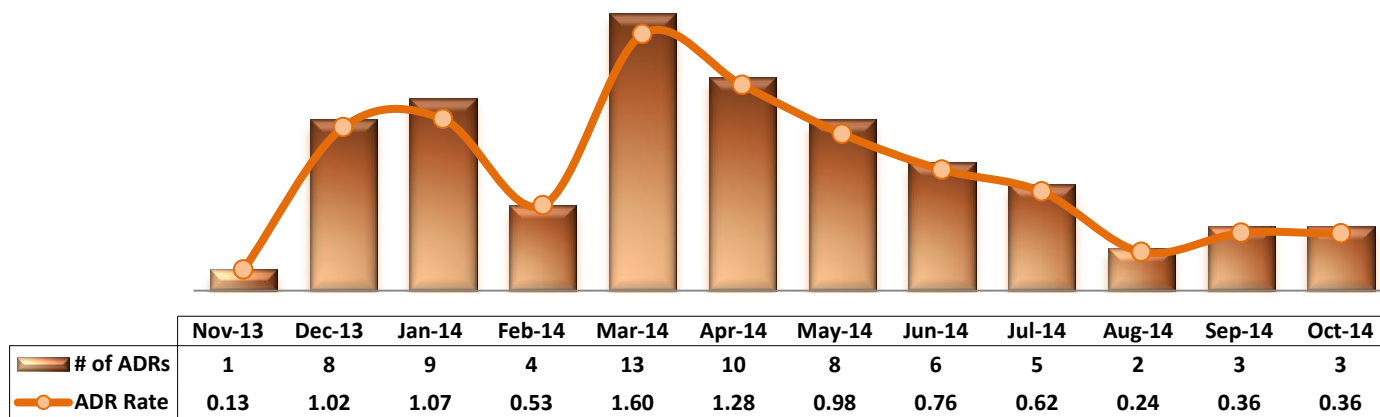
- The number of reported MVs in October (23) declined from that of September (30) and the number of reported ADRs in September and October 2014 remained low at three (3).
- The rate of missing documentation on medication administration stayed at around 0.6% since July 2014.
- The medication refusal rate has been high since August and the rate in October (7.07%) is at the highest level since May 2013. The average medication refusal rate for the past 12 months is 5.77%.
- The number of STAT events (77) and the number of unique individuals involved (33) in October 2014 declined from September (90 and 43, respectively) but remained above the average (58 and 26) of the last 12 months.

17. Reported Medication Variance Events



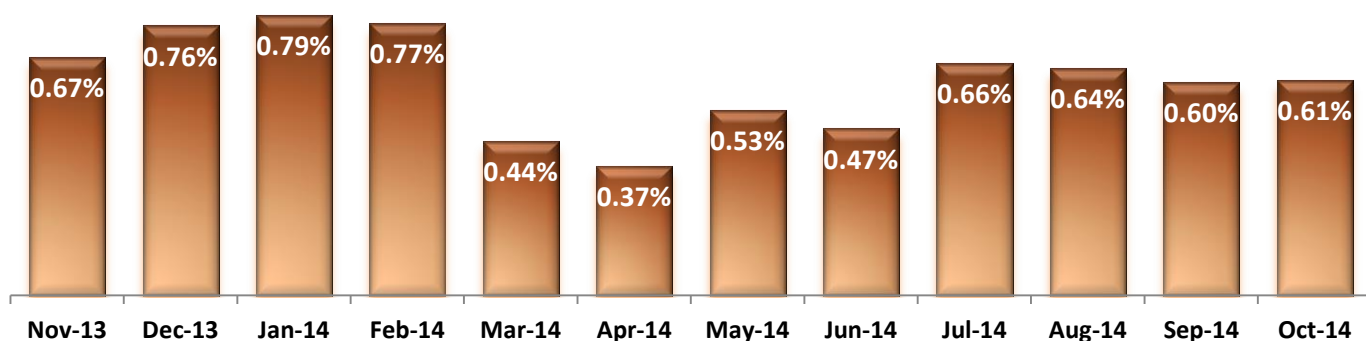
* MV Rate: Number of reported medication variance events that occurred for every 1000 inpatient days.

18. Reported Adverse Drug Reactions

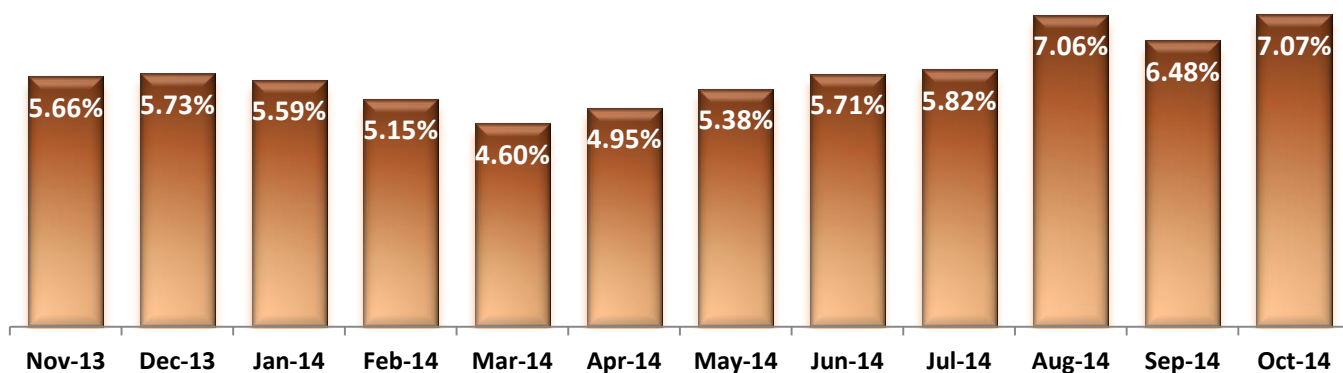


* ADR Rate: Number of reported adverse drug reaction events that occurred for every 1000 inpatient days.

19. Percent of Missing Documentation on Med-Administration

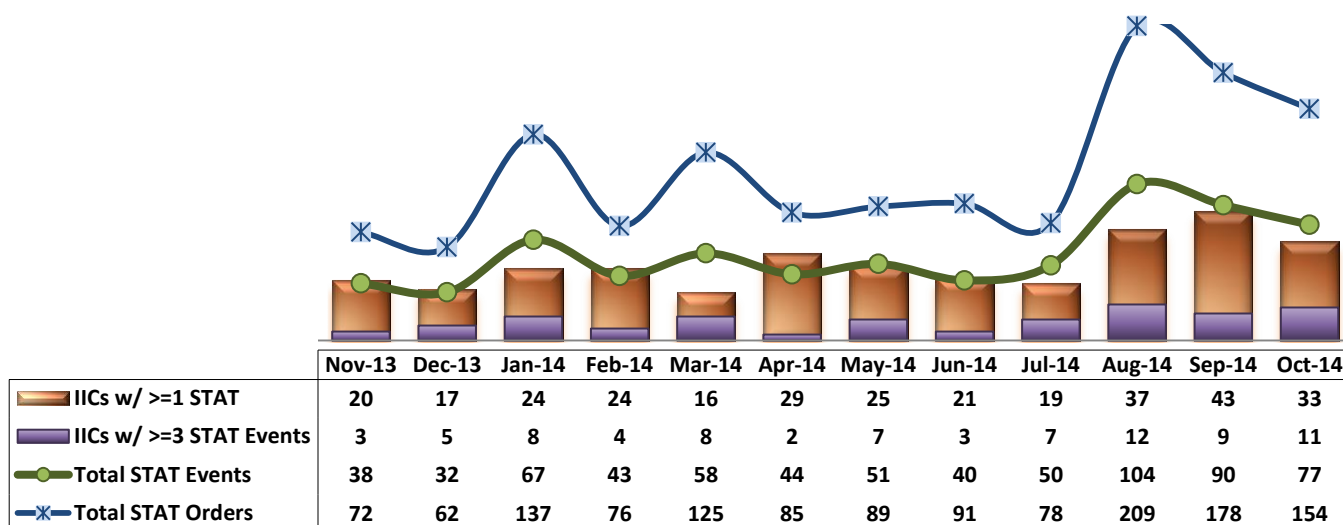


20. Medication Refusal Rate*



* Medication Refusal Rate: the number of refused medication doses divided by the total number of doses scheduled for administration.

21. Number of STAT Events and Individuals Involved

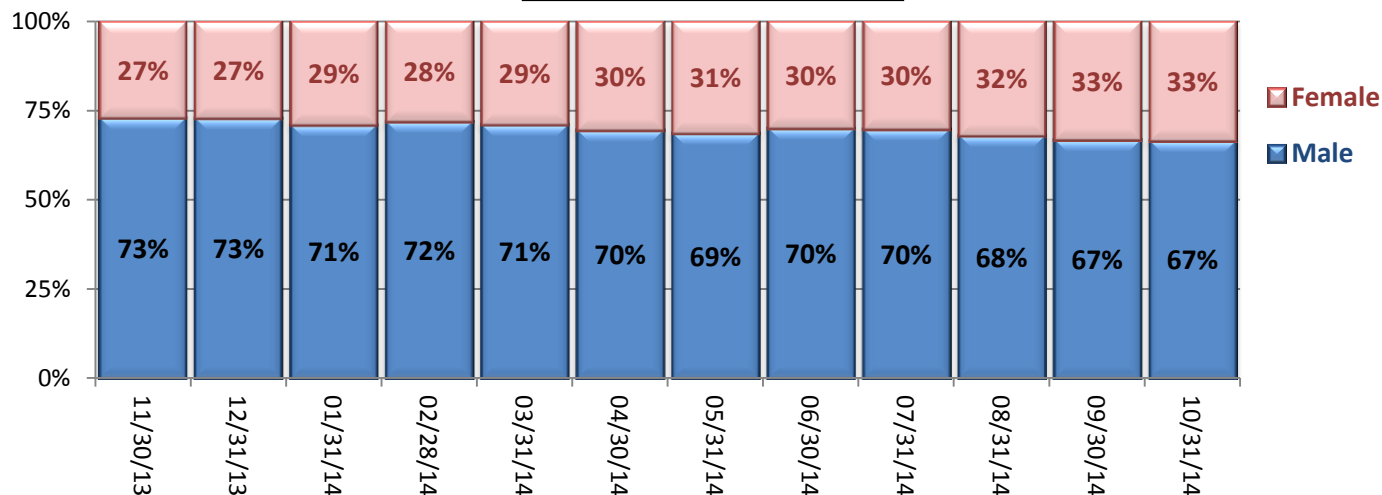


Key Trends: Demographics, Legal Status, and Length of Stay (22)

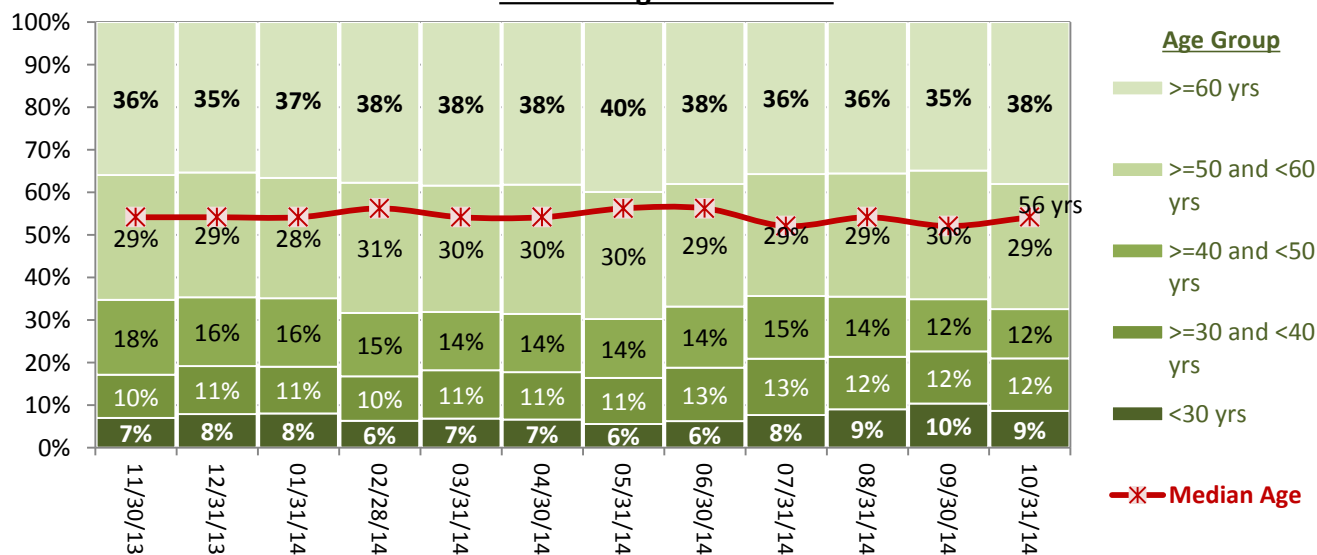
- The proportion of females gradually increased throughout the year. As of October 2013, 26% of individuals in our care were female and that percentage increased to 33% by September 2014.
- About two out of three individuals in care are 50 years or older and the median age is 55 years old as of October 31, 2014.
- The number of pre-trial admissions significantly increased during the last quarter of FY14, the proportion of forensic pre-trial population increased accordingly: from 15% as of May 31, 2014 to 26% as of October 31, 2014, which is the highest level since PRISM tracked this data since December 2010.
- The median length of stay (LOS) of individuals remaining in care decreased gradually since February 2014, falling to the lowest level (394 days or 13 months) as of October 31, 2014. A large number of admissions over the past 6 months triggered an increase in the proportion of recent admissions among the total population in care. Consequently, more and more of individuals in care had shorter LOS, lowering the median LOS of all individuals in care.

22. Demographics and Length of Stay

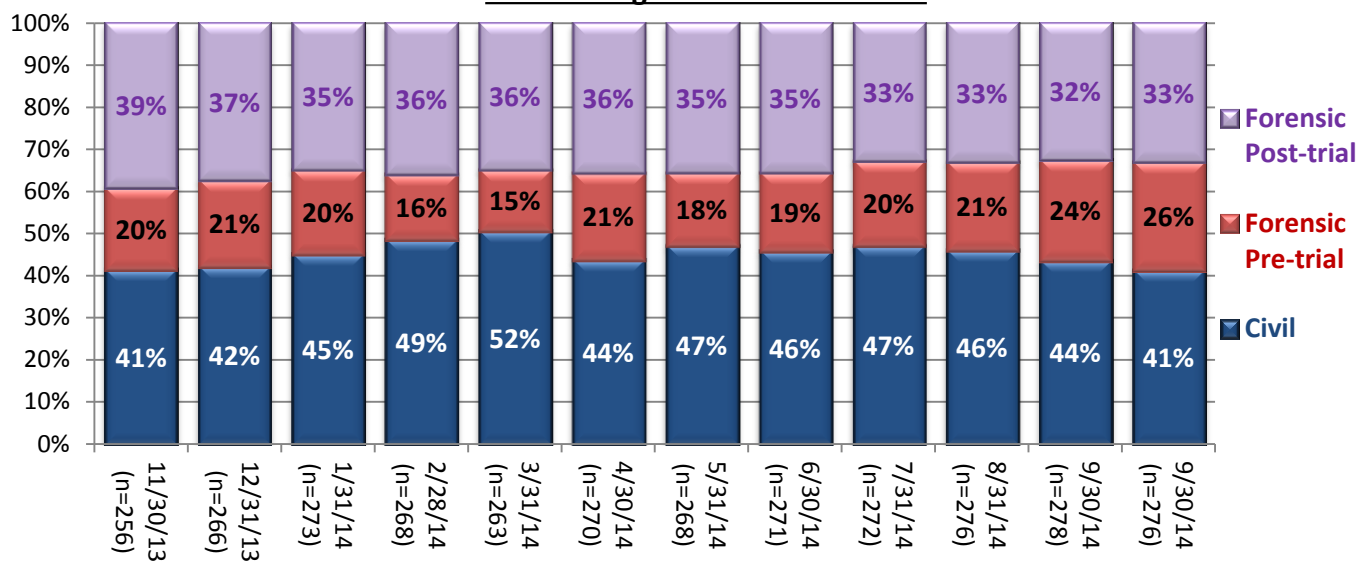
Trend of Gender Distribution



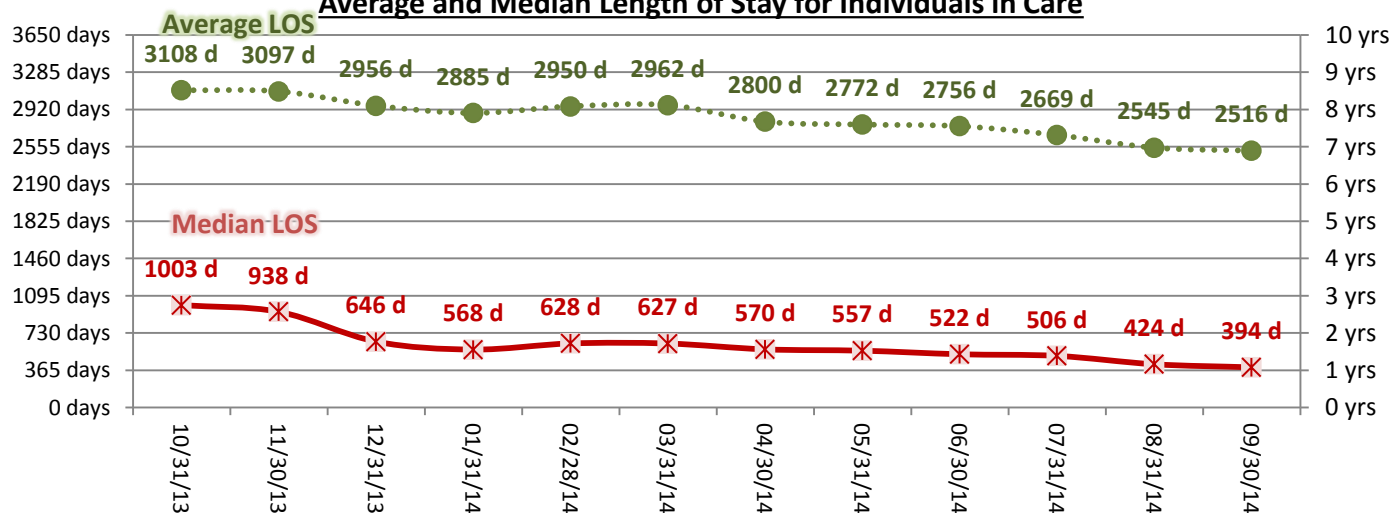
Trend of Age Distribution



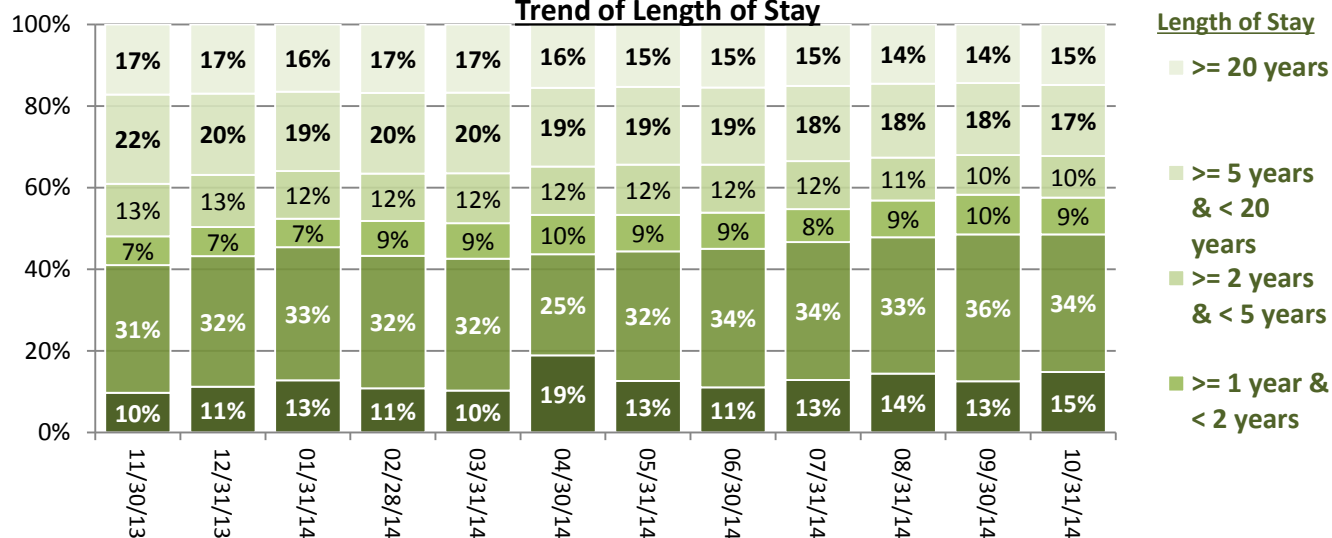
Trend of Legal Status Distribution



Average and Median Length of Stay for Individuals in Care



Trend of Length of Stay



Performance Related Information for Staff & Managers

1. Census, Admissions, Discharges & Transfers

Data Source: Avatar

Updated as of 11/16/14

Category		Nov-13	Dec-13	Jan-14	Feb-14	Mar-14	Apr-14	May-14	Jun-14	Jul-14	Aug-14	Sep-14	Oct-14	Monthly Average	Total (12mths)	Figure
Admissions	Civil	12	11	23	15	16	17	20	10	13	18	10	15	15	180	Figure 1
	Pre-trial	18	19	16	11	11	34	16	20	25	20	25	26	20	241	
	Post-trial	2	1	1	1	4	4	2	2	0	4	2	4	2	27	
	Total	32	31	40	27	31	55	38	32	38	42	37	45	37	448	
Discharges	Civil	17	7	16	21	21	29	15	14	12	21	17	26	18	216	Figure 2
	Pre-trial	16	12	12	11	10	15	22	14	19	16	15	17	15	179	
	Post-trial	4	2	5	0	5	4	3	1	6	1	3	4	3	38	
	Total	37	21	33	32	36	48	40	29	37	38	35	47	36	433	
Net Increase During Month	Civil	-5	4	7	-6	-5	-12	5	-4	1	-3	-7	-11		-36	
	Pre-trial	2	7	4	0	1	19	-6	6	6	4	10	9		62	
	Post-trial	-2	-1	-4	1	-1	0	-1	1	-6	3	-1	0		-11	
	Total	-5	10	7	-5	-5	7	-2	3	1	4	2	-2		15	
All Individuals on Roll at End of Month		256	266	273	268	263	270	268	271	272	276	278	276	270		
a. Present on Unit		250	262	269	263	256	268	260	267	271	270	275	272	265		
b. On AL		5	2	3	5	7	2	8	4	1	6	3	4	4		
c. On UL		1	2	1	0	0	0	0	0	0	0	0	0	0		
All Individuals on Roll: Daily Average during Month*		260	258	274	272	266	264	268	270	265	271	283	276	269		Figure 3
a. Present on Unit		255	253	271	268	262	260	264	265	261	267	278	272	265		
b. On AL		4	3	2	3	4	4	4	5	4	4	5	4	4		
c. On UL		1	1	2	1	0	0	0	0	0	0	0	0	0		
Patient Days**		7649	7844	8394	7514	8115	7789	8171	7941	8084	8277	8326	8422	8044	96526	
Inter-Unit Transfers during Month		5	6	27	11	11	4	10	7	7	11	22	8	11	129	Figure 4
Medical Leaves Initiated during Month	Emergency	14	13	14	9	18	8	18	20	24	16	15	10	15	179	
	Non-Emer	27	34	25	32	25	30	34	81	88	67	68	62	48	573	
	Total	41	47	39	41	43	38	52	101	112	83	83	72	63	752	
Non-Medical Leaves Initiated during Month		121	138	142	141	175	147	230	439	430	386	397	431	265	3177	
UL Initiated during Month		2	1	1	1	0	0	1	2	0	0	0	0	1	8	
Total Unique Patients Served during Month		291	287	306	300	299	315	306	300	305	312	312	318	304		
30 Day Readmission ***	Civil	0	0	0	0	0	0	0	0	0	2	0		0	2	
	Pre-trial	1	0	0	0	0	0	1	0	1	0	1		0	4	
	Post-trial	0	0	0	0	0	1	0	0	0	0	1		0	2	
	Total	1	0	0	0	0	1	1	0	1	2	2		1	8	

* This is the average number of individuals served on a given day for the respective month. Due to rounding from average calculation, numbers from its subcategories a, b, & c may not add up to the total number on this row.

** It counts the number of patients who are present on the unit and excludes those on authorized or unauthorized leave at 11:59pm on a given day.

*** Number of patients returning within 30 days of discharges that occurred during month.

Performance Related Information for Staff & Managers

2. Key Performance Indicators

Data Source: UI DB, MV DB, ADR DB, Restraint/Seclusion Log, and Avatar

Updated as of 11/16/14

Category		Nov-13	Dec-13	Jan-14	Feb-14	Mar-14	Apr-14	May-14	Jun-14	Jul-14	Aug-14	Sep-14	Oct-14	Monthly Average	NPR* (Jun-13)	Figure
30 Day Readmit (Discharge Cohort)**	Civil	0.0%	0.0%	0.0%	0.0%	0.0%	0.0%	0.0%	0.0%	0.0%	9.5%	0.0%		1.0%		Figure 5
	Pre-trial	6.3%	0.0%	0.0%	0.0%	0.0%	0.0%	4.5%	0.0%	5.3%	0.0%	6.7%		2.4%		
	Post-trial	0.0%	0.0%	0.0%	N/A	0.0%	25.0%	0.0%	0.0%	0.0%	0.0%	33.3%		5.7%		
	Combined	2.7%	0.0%	0.0%	0.0%	0.0%	2.1%	2.5%	0.0%	2.7%	5.3%	5.7%		2.0%	6.9%	
Number of Unusual Incidents*		178	179	215	169	192	212	193	174	199	249	190	215	197		Figure 6
Patient Unusual Incident Rate		21.7	21.7	23.6	20.4	22.9	26.1	22.2	20.7	23.1	27.9	21.4	24.3	23.0		Figure 7
UI by Severity	Catastrophe	0	0	0	1	0	0	1	0	0	0	0	0	0		Figure 9
	High	35	26	41	28	32	23	32	35	42	57	29	45	35		
	Medium	71	90	101	81	107	93	86	83	87	102	96	87	90		
	Low	72	63	73	59	53	96	74	56	70	90	65	83	71		
Physical Assault Incident Rate		5.6	5.9	6.6	5.5	4.9	8.2	6.7	4.5	4.7	6.2	5.3	8.0	6.0		
Selected Types of Incidents	Physical Assault	43	46	55	41	40	64	55	36	38	51	44	67	48		Figure 10
	Aggressive Behav.	45	48	67	48	65	62	57	61	71	102	66	67	63		
	Psych Emergency	30	31	52	34	53	34	48	48	45	86	56	67	49		
	Fall	17	16	18	25	26	24	22	20	25	24	25	28	23		
	Injury	41	37	47	30	34	43	34	24	26	40	37	36	36		
Physical Assaults by Severity	High	8	11	16	7	8	8	13	10	7	19	14	21	13		Figure 11
	Medium	18	19	18	12	16	17	16	8	15	10	18	21	16		
	Low	17	16	21	22	16	39	26	18	16	22	12	25	21		
Patient Injury Rate***		0.39	0.38	0.60	0.00	0.12	0.64	0.24	0.63	0.12	0.36	0.48	0.12	0.34	0.38	Figure 12
Patients with Major Injuries***		3	3	5	0	1	5	2	5	1	3	4	1	3		
Total Patients Injured***		26	25	36	22	26	30	23	15	16	24	28	26	25		
Total Staff Injured***		16	18	17	11	19	20	22	16	12	30	13	14	17		Figure 13
Elopement Rate		0.26	0.13	0.12	0.13	0.00	0.00	0.12	0.25	0.00	0.00	0.00	0.00	0.09	0.13	Figure 16
Medication Variance Rate		3.01	1.02	2.38	4.92	2.71	6.80	3.79	5.04	3.59	3.62	3.60	2.73	3.58		Figure 17
Adverse Drug Reaction Rate		0.13	1.02	1.07	0.53	1.60	1.28	0.98	0.76	0.62	0.24	0.36	0.36	0.75		Figure 18
Missing Med-Admin Documentation		0.67%	0.76%	0.79%	0.77%	0.44%	0.37%	0.53%	0.47%	0.66%	0.64%	0.60%	0.61%	0.61%		Figure 19
Percent of Medication Refusal		5.66%	5.73%	5.59%	5.15%	4.60%	4.95%	5.38%	5.71%	5.82%	7.06%	6.48%	7.07%	5.77%		Figure 20
Percent of Patients Restrained		0.7%	0.0%	0.3%	0.0%	0.0%	0.6%	0.7%	0.7%	0.3%	0.6%	1.0%	0.3%	0.4%	5.8%	Figure 14
Percent of Patients Secluded		2.1%	0.3%	1.6%	1.7%	1.7%	1.9%	2.6%	2.7%	1.6%	3.8%	3.8%	2.8%	2.2%	2.4%	
Restraint Hours Rate		0.034	0.000	0.003	0.000	0.000	0.021	0.048	0.022	0.077	0.108	0.030	0.010	0.030	0.71	Figure 15
Seclusion Hours Rate		0.094	0.034	0.052	0.068	0.095	0.063	0.127	0.118	0.073	0.085	0.049	0.040	0.075	0.44	

* National Public Rate, NASMHPD Research Institute, National Research Institute (NRI), Data as of June 2013, Published in November 2013.

** Percentage of patients returning within 30 days of discharges that occurred during month

*** Refer to the next page [UI & Medication]

Performance Related Information for Staff & Managers

3. Unusual Incident & Medication

Data Source: UI DB, MV DB, ADR DB, and Avatar

Updated as of 11/16/14

Category		Nov-13	Dec-13	Jan-14	Feb-14	Mar-14	Apr-14	May-14	Jun-14	Jul-14	Aug-14	Sep-14	Oct-14	Monthly Average	Total (12mths)	NPR* (Jun-13)
Unusual Incidents (excluding MV)**	Total UIs	178	179	215	169	192	212	193	174	199	249	190	215	197	2365	
	Major UIs Only	128	123	141	129	142	146	147	126	150	188	147	169	145	1736	
	Pt Involved UI Only	166	170	198	153	186	203	181	164	187	231	178	205	185	2222	
	Patient UI Rate	21.7	21.7	23.6	20.4	22.9	26.1	22.2	20.7	23.1	27.9	21.4	24.3	23.0		
	Unique Pts Involved in UI	100	104	115	105	103	130	106	100	107	116	107	143	111	1336	
Selected Types of Incidents	Physical Assault	43	46	55	41	40	64	55	36	38	51	44	67	48	580	
	Aggressive Behavior	45	48	67	48	65	62	57	61	71	102	66	67	63	759	
	Psych Emergency	30	31	52	34	53	34	48	48	45	86	56	67	49	584	
	Fall	17	16	18	25	26	24	22	20	25	24	25	28	23	270	
	Injury	41	37	47	30	34	43	34	24	26	40	37	36	36	429	
Physical Assault Rate		5.6	5.9	6.6	5.5	4.9	8.2	6.7	4.5	4.7	6.2	5.3	8.0	6.0		
UI by Severity	Catastrophe	0	0	0	1	0	0	1	0	0	0	0	0	0	2	
	High	35	26	41	28	32	23	32	35	42	57	29	45	35	425	
	Medium	71	90	101	81	107	93	86	83	87	102	96	87	90	1084	
	Low	72	63	73	59	53	96	74	56	70	90	65	83	71	854	
Physical Assaults by Severity	High	8	11	16	7	8	8	13	10	7	19	14	21	13	142	
	Medium	18	19	18	12	16	17	16	8	15	10	18	21	16	188	
	Low	17	16	21	22	16	39	26	18	16	22	12	25	21	250	
Total Patients Injured***		26	25	36	22	26	30	23	15	16	24	28	26	25	297	
Patients with Major Injuries***		3	3	5	0	1	5	2	5	1	3	4	1	3	33	
Patient Injury Rate***		0.39	0.38	0.60	0.00	0.12	0.64	0.24	0.63	0.12	0.36	0.48	0.12	0.34		0.38
Total Staff Injured**		16	18	17	11	19	20	22	16	12	30	13	14	17		
Total UIs Documented in Avatar		2	1	1	1	0	0	1	2	0	0	0	0	1	9	
Elopement Rate		0.26	0.13	0.12	0.13	0.00	0.00	0.12	0.25	0.00	0.00	0.00	0.00	0.09		0.13
Med Variance (MV) Reports**		23	8	20	37	22	53	31	40	29	30	30	23	29	346	
MV Rate		3.01	1.02	2.38	4.92	2.71	6.80	3.79	5.04	3.59	3.62	3.60	2.73	3.58		
Adverse Drug Reactions Reports		1	8	9	4	13	10	8	6	5	2	3	3	6	72	
ADR Rate		0.13	1.02	1.07	0.53	1.60	1.28	0.98	0.76	0.62	0.24	0.36	0.36	0.75		
Total Med Administrations Scheduled		101422	102249	108474	98616	107326	104201	108187	104448	107179	105835	103590	105994		1257521	
Total Missing Documentations		684	780	860	759	469	381	568	493	704	680	626	647		7651	
Percent of Missing Documentation		0.67%	0.76%	0.79%	0.77%	0.44%	0.37%	0.53%	0.47%	0.66%	0.64%	0.60%	0.61%		0.61%	
Total Medication Doses Refused		5743	5861	6059	5080	4937	5163	5823	5969	6239	7472	6712	7493		72551	
Percent of Medication Refusal		5.66%	5.73%	5.59%	5.15%	4.60%	4.95%	5.38%	5.71%	5.82%	7.06%	6.48%	7.07%		5.77%	
Total STAT Orders		72	62	137	76	125	85	89	91	78	209	178	154	113		Figure 21
Total STAT Events****		38	32	67	43	58	44	51	40	50	104	90	77	58		
Total Individuals Involved >=1 STAT		20	17	24	24	16	29	25	21	19	37	43	33	26		
Total Patients with >=3 STAT Events		3	5	8	4	8	2	7	3	7	12	9	11	7		

* National Public Rate, NASMHPD Research Institute, National Research Institute (NRI), Data as of June 2013, Published in November 2013.

** Numbers may change if any additional UI report is made after the data run date from UI database (around the 15th of the following month); According to the revised UI policy as of November 4, 2013, a medication variance (MV) incident became no longer considered to be an unusual incident, and a medication or vital sign refusal incident is not longer an UI as of May 2014. UI data for the past 12 months in this report has been updated to reflect this change and reanalyzed in order to show the UI trend in consistent logic.

*** Injury is broadly defined to include any type of injuries regardless of the cause or severity level. The total number of patients injured represents all of the reported injuries including minor injuries treated with first aid alone. However, the patient injury rate considers only the number of patient injuries that required beyond first-aid level treatment based on the NRI definition and the patient injury rate is the number of 'major' patient injuries per every 1000 inpatient days

**** One STAT event may involve more than one STAT order for the same patient. Any orders placed within 20 minute timeframe are considered to belong to one STAT event.

Performance Related Information for Staff & Managers

4. Restraint & Seclusion

Data Source: Restraint/Seclusion Log and UI DB (for # of total events and patients) and Avatar (for patient days/hours)

Updated as of 11/16/14

Category	Nov-13	Dec-13	Jan-14	Feb-14	Mar-14	Apr-14	May-14	Jun-14	Jul-14	Aug-14	Sep-14	Oct-14	Monthly Average	Total (12mths)	NPR* (Jun-13)
Number of Restraint Events	2	0	1	0	0	2	6	4	7	7	6	1	3.0	36	
Number of Unique Patients Restrained	2	0	1	0	0	2	2	2	1	2	3	1	1.3		
Percentage of Patients Restrained	0.7%	0.0%	0.3%	0.0%	0.0%	0.6%	0.7%	0.7%	0.3%	0.6%	1.0%	0.3%	0.4%		5.8%
Total Restraint Hours (h:mm)	6:15	0:00	0:35	0:00	0:00	4:00	9:30	4:16	15:00	21:25	6:00	2:00	5:45	69:01	
Restraint Hours Rate	0.034	0.000	0.003	0.000	0.000	0.021	0.048	0.022	0.077	0.108	0.030	0.010	0.030		0.71
Number of Seclusion Events	11	6	6	13	15	10	20	22	14	21	17	12	13.9	167	
Number of Unique Patients Secluded	6	1	5	5	5	6	8	8	5	12	12	9	6.8		
Percentage of Patients Secluded	2.1%	0.3%	1.6%	1.7%	1.7%	1.9%	2.6%	2.7%	1.6%	3.8%	3.8%	2.8%	2.2%		2.4%
Total Seclusion Hours (h:mm)	17:11	6:20	10:34	12:15	18:27	11:47	24:49	22:32	14:14	16:51	9:52	8:01	14:24	172:53	
Seclusion Hours Rate	0.094	0.034	0.052	0.068	0.095	0.063	0.127	0.118	0.073	0.085	0.049	0.040	0.075		0.44

* National Public Rate, NASMHPD Research Institute, National Research Institute (NRI), Data as of June 2013, Published in November 2013.

Performance Related Information for Staff & Managers

5. Demographic Information of Individuals in Care

Data Source: Avatar

Updated as of 11/16/14

Category	Sub-group	Nov-13	Dec-13	Jan-14	Feb-14	Mar-14	Apr-14	May-14	Jun-14	Jul-14	Aug-14	Sep-14	Oct-14	Monthly Average	Percent*
Total Active (on Roll) at End of Month*		256	266	273	268	263	270	268	271	272	276	278	276	270	
Gender	Female	69	72	79	75	76	82	84	81	82	88	92	92	81	30.0%
	Male	187	194	194	193	187	188	184	190	190	188	186	184	189	70.0%
Age	Median Age (Years)	56 yrs	56 yrs	56 yrs	57 yrs	56 yrs	56 yrs	57 yrs	57 yrs	55 yrs	56 yrs	55 yrs	56 yrs	56 yrs	
	<30 years old	18	21	22	17	18	18	15	17	21	25	29	24	20	7.6%
	>=30 and <40 years old	26	30	30	28	30	30	29	34	36	34	34	34	31	11.6%
	>=40 and <50 years old	45	43	44	40	36	37	37	39	40	39	34	32	39	14.4%
	>=50 and <60 years old	75	78	77	82	78	82	80	78	78	80	84	81	79	29.4%
	>=60 years old	92	94	100	101	101	103	107	103	97	98	97	105	100	37.0%
Legal Status of Individuals on Roll at End of Month	Emergency	19	26	34	33	35	31	36	33	28	25	27	22	29	10.8%
	Inpatient Commitment	23	23	26	28	28	30	31	33	36	39	34	35	31	11.3%
	Outpatient Commitment	23	22	22	22	32	19	18	22	28	23	23	22	23	8.5%
	Voluntary	41	41	41	47	43	38	41	36	36	40	37	35	40	14.7%
	Civil Sub-total	106	112	123	130	138	118	126	124	128	127	121	114	122	45.3%
	DC Exam	49	54	54	41	38	35	30	30	28	30	31	40	38	14.2%
	Mentally Incompetent	1	1	1	1	2	21	17	21	27	28	36	31	16	5.8%
	Forensic Pre-trial Sub-total	50	55	55	42	40	56	47	51	55	58	67	71	54	20.0%
	NGBRI - DC	83	82	77	78	77	79	79	80	74	75	74	76	78	28.9%
	NGBRI - US	12	12	13	13	13	12	12	12	11	11	11	10	12	4.4%
Length of Stay	NGBRI - VI	1	1	1	1	1	1	1	1	1	1	1	1	1	0.4%
	Dual Commitment	2	2	2	2	2	2	1	1	1	2	2	2	2	0.6%
	Sexual Psychopath (Miller Act)	2	2	2	2	2	2	2	2	2	2	2	2	2	0.7%
	Forensic Post-trial Sub-total	100	99	95	96	95	96	95	96	89	91	90	91	94	35.0%
	Median LOS (Days)	938 d	646 d	568 d	628 d	627 d	570 d	557 d	522 d	506 d	424 d	394 d	399 d	565 d	
	Average LOS (Days)	3097 d	2956 d	2885 d	2950 d	2962 d	2800 d	2772 d	2756 d	2669 d	2545 d	2516 d	2532 d	2787 d	
	<30 Days	25	30	35	29	27	51	34	30	35	40	35	41	34	12.7%
	>=30 ~ <365 Days	80	85	89	87	85	67	85	92	92	92	100	93	87	32.3%
Length of Stay	>= 1 Year & < 2 Years	18	19	19	23	23	26	24	24	22	25	27	25	23	8.5%
	>= 2 Years & < 5 Years	33	34	32	31	32	32	33	32	32	29	27	28	31	11.6%
	>= 5 Years & < 20 Years	56	53	53	53	52	52	51	51	50	50	49	48	52	19.1%
	>= 20 Years	44	45	45	45	44	42	41	42	41	40	40	41	43	15.8%

* Counts the total number of individuals who are on the hospital roll at end of each month. This number serves as denominator to calculate percentage of each group.

Performance Related Information for Staff & Managers

6. Major Unusual Incidents by Incident Location/Unit

Data Source: UI DB

Updated as of 11/16/14

Category		Nov-13	Dec-13	Jan-14	Feb-14	Mar-14	Apr-14	May-14	Jun-14	Jul-14	Aug-14	Sep-14	Oct-14	Monthly Average	Total (12mths)	Percent
Total Unusual Incidents		178	179	215	169	192	212	193	174	199	249	190	215	197	2365	100%
Incident Location	1A	4	6	5	6	11	6	14	4	7	15	4	11	8	93	4%
	1B	8	7	13	16	13	7	9	9	21	19	10	18	13	150	6%
	1C	15	13	11	9	11	17	7	11	6	12	18	31	13	161	7%
	1D	10	14	27	17	27	11	27	22	19	29	20	7	19	230	10%
	1E	15	10	26	9	33	22	17	13	12	22	21	25	19	225	10%
	1F	28	34	39	33	24	27	19	15	37	32	28	25	28	341	14%
	1G	14	34	29	14	6	22	27	24	12	28	20	13	20	243	10%
	2A	5	3	1	7	3	5	3	3	6	10	7	4	5	57	2%
	2B	2	4	2	2	3	6	4	0	2	4	8	4	3	41	2%
	2C	20	20	10	12	15	19	19	19	22	20	9	16	17	201	8%
	2D	22	9	14	14	14	34	16	13	20	18	17	18	17	209	9%
	TLC	24	16	28	14	22	21	17	24	14	20	15	26	20	241	10%
	Other	11	9	10	16	10	15	14	17	21	20	13	17	14	173	7%
Physical Assault		43	46	55	41	40	64	55	36	38	51	44	67	48	580	100%
Incident Location	1A	1	2	2	1	1	1	5	0	2	2	1	0	2	18	3%
	1B	1	0	0	4	0	1	3	1	3	0	2	4	2	19	3%
	1C	4	3	3	2	0	5	2	3	1	0	3	8	3	34	6%
	1D	4	3	4	7	13	4	8	8	5	14	11	4	7	85	15%
	1E	6	4	13	0	12	8	7	3	5	2	4	12	6	76	13%
	1F	3	8	7	5	1	7	4	2	5	3	5	8	5	58	10%
	1G	8	16	10	8	3	8	9	4	3	8	9	4	8	90	16%
	2A	0	0	0	0	0	0	0	0	0	0	0	1	0	1	0%
	2B	0	0	0	0	0	0	0	0	2	0	0	0	0	2	0%
	2C	3	3	4	5	2	7	5	7	4	3	2	4	4	49	8%
	2D	8	4	6	4	3	15	8	3	1	11	4	11	7	78	13%
	TLC - Intensive	2	2	4	5	3	5	3	2	2	3	0	7	3	38	7%
	TLC - Transitional	3	0	1	0	1	1	0	0	2	4	3	0	1	15	3%
	Other	0	1	1	0	1	2	1	3	3	1	0	4	1	17	3%

Performance Related Information for Staff & Managers

6. Major Unusual Incidents by Incident Location/Unit

Data Source: UI DB

Updated as of 11/16/14

Category		Nov-13	Dec-13	Jan-14	Feb-14	Mar-14	Apr-14	May-14	Jun-14	Jul-14	Aug-14	Sep-14	Oct-14	Monthly Average	Total (12mths)	Percent
Aggressive Behavior		45	48	67	48	65	62	57	61	71	102	66	67	63	759	131%
Incident Location	1A	0	0	0	2	0	0	0	1	1	5	1	2	1	12	2%
	1B	0	0	0	1	4	0	0	0	3	7	4	5	2	24	4%
	1C	3	3	1	4	3	3	0	1	3	6	7	10	4	44	8%
	1D	2	0	8	3	9	2	10	5	4	12	7	1	5	63	11%
	1E	6	3	12	2	14	9	4	3	2	15	11	9	8	90	16%
	1F	15	11	18	19	15	13	9	10	20	18	10	15	14	173	30%
	1G	5	14	9	4	1	10	11	17	5	14	8	0	8	98	17%
	2A	2	2	0	4	1	3	2	2	4	7	3	1	3	31	5%
	2B	0	0	1	1	0	2	1	0	0	1	4	2	1	12	2%
	2C	3	5	2	4	6	3	8	10	12	6	3	5	6	67	12%
	2D	2	3	4	2	4	9	5	2	8	1	2	5	4	47	8%
	TLC - Intensive	3	5	7	1	6	5	6	7	4	3	3	3	4	53	9%
	TLC - Transitional	2	0	4	0	2	3	0	2	3	4	1	4	2	25	4%
	Other	2	2	1	1	0	0	1	1	2	3	2	5	2	20	3%
Psych Emergency		30	31	52	34	53	34	48	48	45	86	56	67	49	584	101%
Incident Location	1A	0	0	0	1	0	0	0	1	1	1	0	1	0	5	1%
	1B	0	0	0	3	3	0	0	0	2	3	1	7	2	19	3%
	1C	4	1	0	1	1	0	0	2	1	3	2	11	2	26	4%
	1D	1	0	8	3	7	2	10	6	3	18	9	3	6	70	12%
	1E	9	2	15	1	23	8	5	3	1	16	16	14	9	113	19%
	1F	11	10	17	16	10	5	7	4	19	13	10	15	11	137	24%
	1G	5	16	10	5	3	9	16	17	5	16	12	3	10	117	20%
	2A	0	0	0	0	0	2	0	0	0	0	0	0	0	2	0%
	2B	0	0	0	0	0	0	0	0	0	1	0	0	0	1	0%
	2C	0	0	0	1	4	4	4	10	7	7	0	4	3	41	7%
	2D	0	2	1	2	1	3	2	0	3	5	3	5	2	27	5%
	TLC - Intensive	0	0	1	1	1	0	4	4	2	2	0	2	1	17	3%
	TLC - Transitional	0	0	0	0	0	1	0	0	0	1	2	0	0	4	1%
	Other	0	0	0	0	0	0	0	1	1	0	1	2	0	5	1%

Performance Related Information for Staff & Managers

6. Major Unusual Incidents by Incident Location/Unit

Data Source: UI DB

Updated as of 11/16/14

Category		Nov-13	Dec-13	Jan-14	Feb-14	Mar-14	Apr-14	May-14	Jun-14	Jul-14	Aug-14	Sep-14	Oct-14	Monthly Average	Total (12mths)	Percent
Fall		17	16	18	25	26	24	22	20	25	24	25	28	23	270	100%
Incident Location	1A	1	3	2	3	5	1	3	0	1	4	2	4	2	29	11%
	1B	1	2	1	3	2	2	1	1	4	6	4	4	3	31	11%
	1C	1	1	4	2	2	2	4	2	0	1	0	5	2	24	9%
	1D	3	1	1	2	4	1	5	0	5	2	3	2	2	29	11%
	1E	2	1	3	1	1	2	0	2	0	1	1	2	1	16	6%
	1F	0	1	3	1	1	1	0	1	3	1	2	1	1	15	6%
	1G	1	2	0	1	1	1	2	0	2	2	1	2	1	15	6%
	2A	0	0	0	1	0	0	0	0	0	0	1	0	0	2	1%
	2B	2	3	0	1	2	4	0	0	0	1	2	1	1	16	6%
	2C	0	0	0	1	4	1	2	1	3	1	0	0	1	13	5%
	2D	2	0	1	2	2	7	1	4	4	1	5	2	3	31	11%
	TLC - Intensive	2	2	0	0	0	1	0	1	0	0	1	1	1	8	3%
	TLC - Transitional	1	0	0	1	0	1	1	2	1	2	1	1	1	11	4%
	Other	1	0	3	6	2	0	3	6	2	2	2	3	3	30	11%
Physical Injury		41	37	47	30	34	43	34	24	26	40	37	36	36	429	100%
Incident Location	1A	2	1	0	1	4	3	3	2	2	2	1	0	2	21	5%
	1B	2	0	1	2	2	1	3	1	4	2	1	2	2	21	5%
	1C	2	3	3	2	1	0	2	2	0	2	1	5	2	23	5%
	1D	5	4	11	6	5	1	6	2	3	6	8	3	5	60	14%
	1E	6	2	7	1	8	6	3	3	5	4	2	7	5	54	13%
	1F	2	10	10	5	1	3	1	1	1	4	12	5	5	55	13%
	1G	4	11	3	5	2	5	9	2	2	6	0	3	4	52	12%
	2A	1	0	0	0	0	0	0	0	0	0	1	0	0	2	0%
	2B	1	1	0	1	2	1	1	0	1	0	1	0	1	9	2%
	2C	3	1	4	1	5	7	2	2	3	4	2	2	3	36	8%
	2D	4	3	3	3	2	8	1	1	2	1	4	2	3	34	8%
	TLC - Intensive	4	1	2	1	2	2	1	2	1	2	0	4	2	22	5%
	TLC - Transitional	2	0	0	0	0	0	0	2	0	2	2	0	1	8	2%
	Other	3	0	3	2	0	6	2	4	2	5	2	3	3	32	7%

* Not every incident is a major incident. This counts only those incidents that were classified to be major based on the policy.