

**Government of the District of Columbia  
Department of Behavioral Health (DBH)**

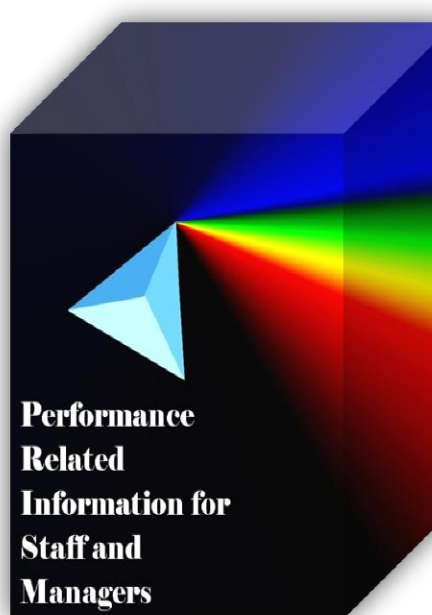


**Performance Related Information for Staff and Managers**

# **PRISM**

## **AUGUST 2014**

Table of Contents



1.	Admissions to SEH .....	1
2.	Discharges from SEH.....	1
3.	Average Daily Census .....	2
4.	Transfers .....	2
5.	30-Day Readmission Rate .....	2
6.	Unusual Incidents.....	3
7.	Patient-Involved Unusual Incidents.....	3
8.	Admissions vs. Patient UI Rate .....	4
9.	Unusual Incidents by Severity .....	4
10.	Selected Types of Incidents .....	4
11.	Physical Assaults by Severity .....	5
12.	Patient Injuries .....	5
13.	Staff Injuries.....	5
14.	Percent of Patients Restrained or Secluded.....	6
15.	Restraint Hours Rate & Seclusion Hours Rate .....	6
16.	Elopements .....	6
17.	Reported Medication Variance Events .....	7
18.	Reported Adverse Drug Reactions.....	7
19.	Percent of Missing Documentation on Med-Administration.....	8
20.	Medication Refusal Rate*.....	8
21.	Number of STAT Events and Individuals Involved .....	8
22.	Demographics and Length of Stay .....	9

<input type="checkbox"/>	<i>Appendix 1) Table – Census, Admissions &amp; Discharges</i>
<input type="checkbox"/>	<i>Appendix 2) Table – Key Performance Indicators</i>
<input type="checkbox"/>	<i>Appendix 3) Table – Unusual Incident &amp; Medication</i>
<input type="checkbox"/>	<i>Appendix 4) Table – Restraint &amp; Seclusion</i>
<input type="checkbox"/>	<i>Appendix 5) Table – Demographic Information of Individuals in Care</i>
<input type="checkbox"/>	<i>Appendix 6) Table – Unusual Incidents by Unit</i>

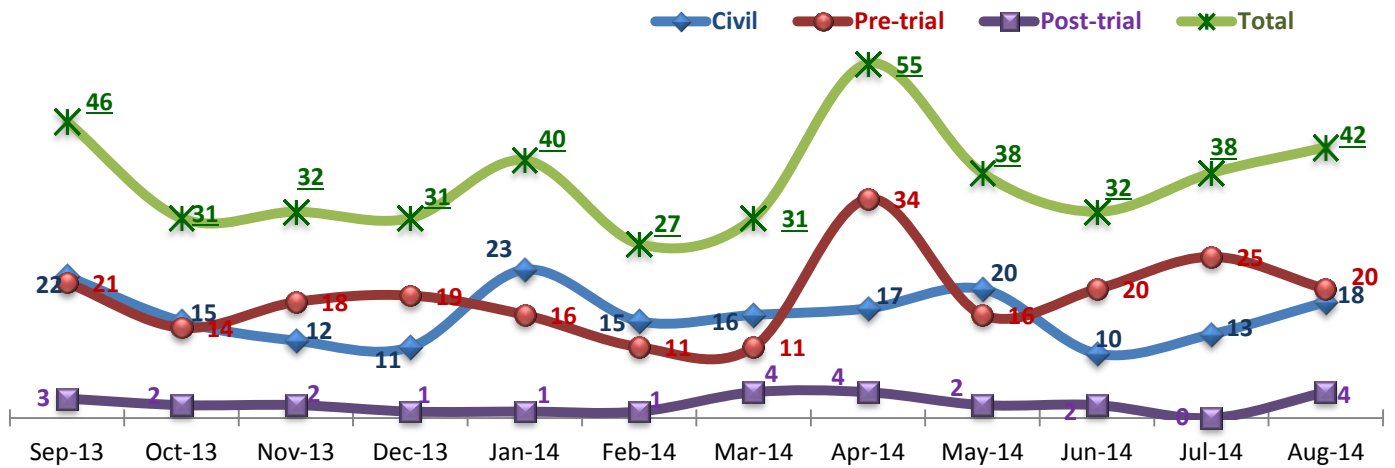
**09/17/2014**

**Office of Statistics and Reporting (OSR)**

**Key Trends: Admission, Discharge, Transfer, Census, and Readmissions (1~6)**

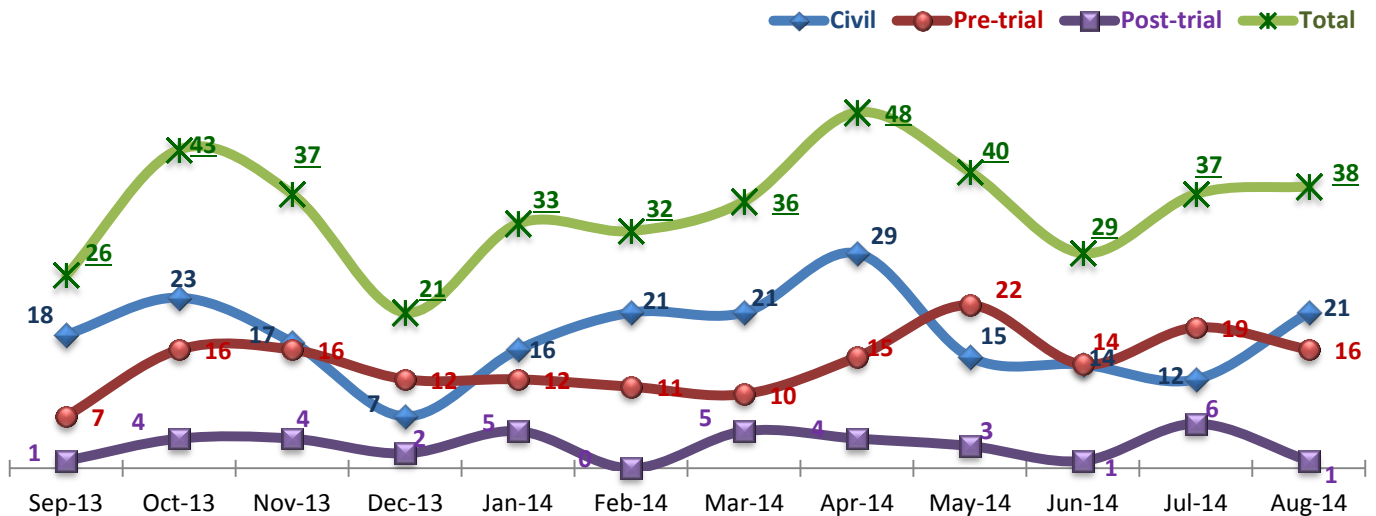
- In the month of August, the number of admissions (42) increased from that in July and exceeded the number of discharges (38), increasing the average daily census (ADC) to 271 per day in August 2014 from 265 in July.
- The number of emergency medical transfers increased since April through July 2014 but declined in August.
- There was one individual who returned within 30-days from July discharges (pre-trial). The 30-day readmission rate year-to-date in FY14 is 1.7%, which is far below the NPR (6.9%)<sup>1</sup>.

**1. Admissions to SEH**



\* Number of admissions to SEH inpatient program, including transfers from outpatient to inpatient program.

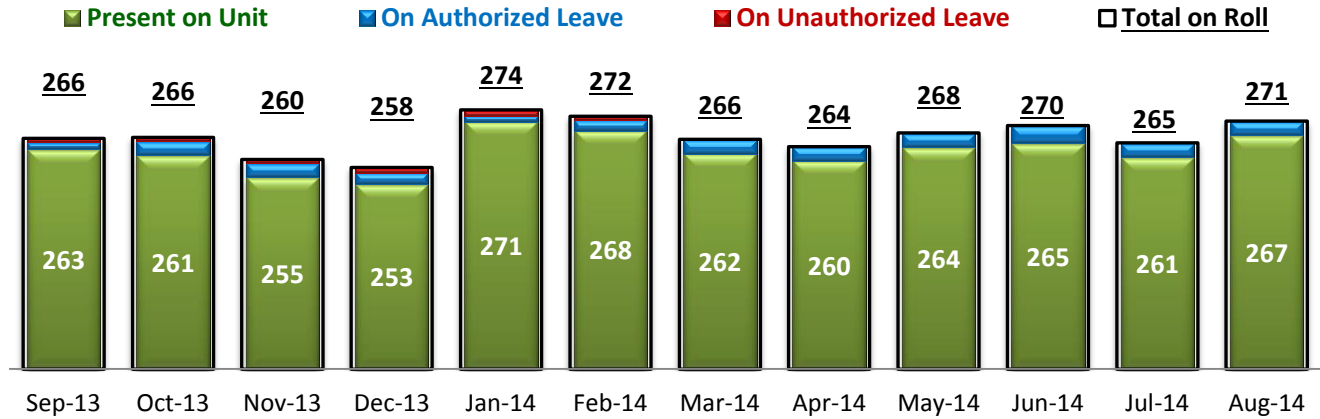
**2. Discharges from SEH**



\* Number of discharges from SEH inpatient program, including transfers from inpatient to outpatient program.

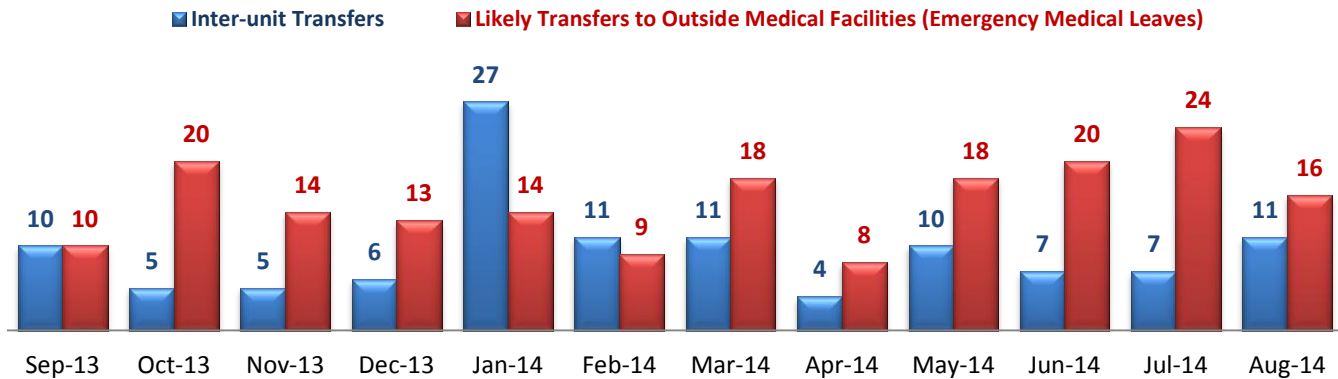
<sup>1</sup> NPR: National Public Rate as of June 2013 was published in November 2013 by National Association of State Mental Health Program Directors Research Institute (NRI), based on data collected from a number of state psychiatric hospitals nationwide.

### 3. Average Daily Census



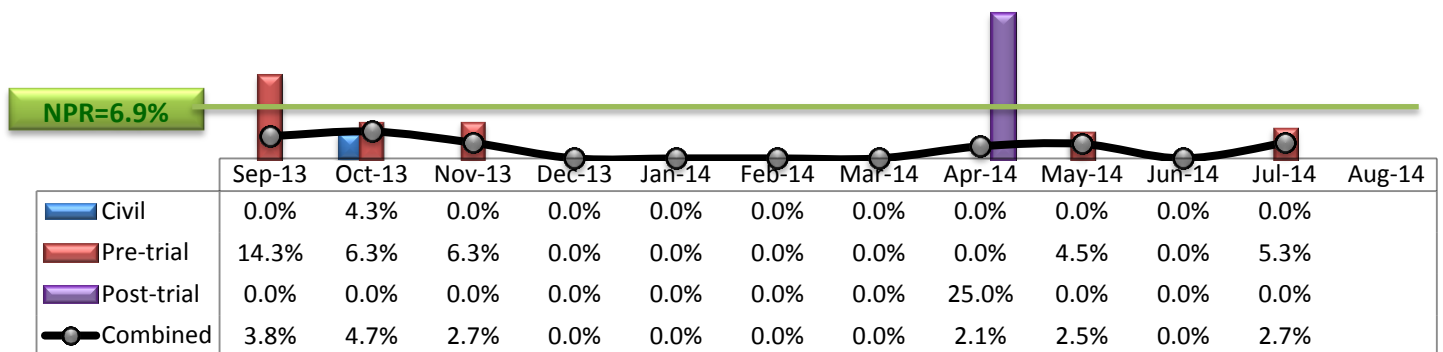
\* Data above is the daily average number of individuals counted at 11:59 PM every day during each month.

### 4. Transfers



\* Number of inter-unit transfers that occurred during month and number of emergency medical leaves that were initiated during month.

### 5. 30-Day Readmission Rate



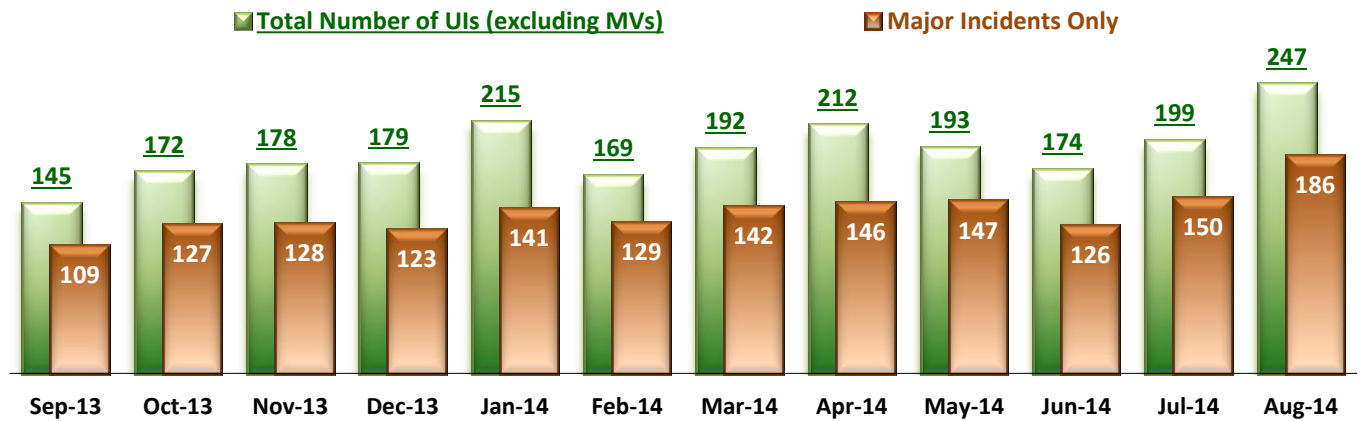
\* Percent of discharges that returned to SEH within 30 days of discharges. It does not include those who may have been re-hospitalized at another psychiatric facility. This measure requires 30-day observation following discharge.

\*\* The post-trial denominators (discharges) per month range only between one and six, making the monthly re-admission rate high when there is any. For example, in August 2013, there were two post trial discharges, of which one (50%) was readmitted within 30 days.

**Key Trends: Unusual Incidents (6~16)**

- The total number of unusual incidents (UIs) and the patient UI rate increased significantly in August 2014 as the number of admissions and census increased: a total of 247 UIs were reported in August and this is the highest level ever since PRISM included the UI trend. (In May 2013, a total of 293 UIs were reported, but that number included 69 of medication variance and treatment refusal events that are no longer reported as UIs.) Likewise, the patient UI rate that calculates the frequency of patient related UIs based on census (per 1000 patient hours) also recorded the highest as of August 2014.
- The increase of UIs in August appears at all severity levels and in a number of violence related areas, including aggressive behaviors, psychiatric emergencies and physical assaults.
- Both patient and staff injuries increased.
- There were no elopements in July and August 2014. The elopement rate over the past 12 months is 0.12 per 1000 patient days, which is slightly lower than the national average (NPR 0.13).

**6. Unusual Incidents**



\* As of May 2014, a medication or vital sign refusal incident is no longer considered to be an UI. In the above and below charts in this report, any medication or vital sign refusal incidents have been removed for a consistent assessment of the UI trend.

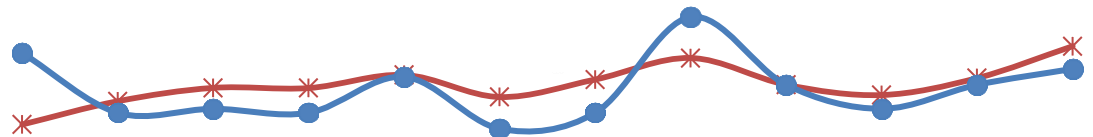
**7. Patient-Involved Unusual Incidents**



	Sep-13	Oct-13	Nov-13	Dec-13	Jan-14	Feb-14	Mar-14	Apr-14	May-14	Jun-14	Jul-14	Aug-14
# of Patient-Involved UIs	129	160	166	170	198	153	186	203	181	164	187	230
# of Unique Patients in UI	107	112	100	104	115	105	103	130	106	100	107	115
Patient UI Rate	16.3	19.8	21.7	21.7	23.6	20.4	22.9	26.1	22.2	20.7	23.1	27.8

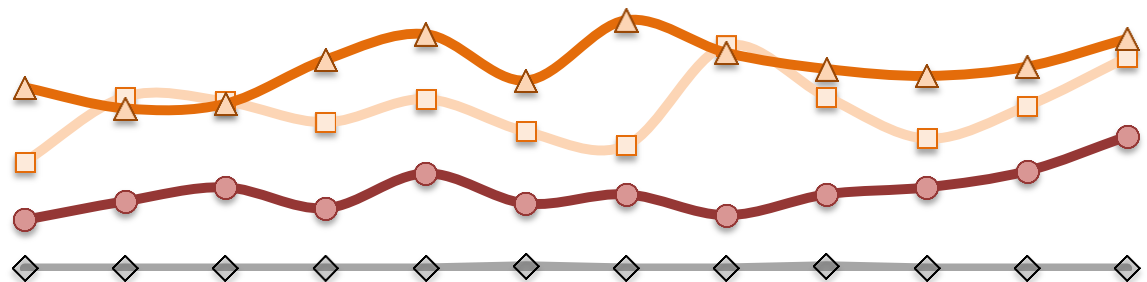
\* The patient UI rate is the number of patient-involved unusual incidents reported for every 1000 inpatient days.

### 8. Admissions vs. Patient UI Rate



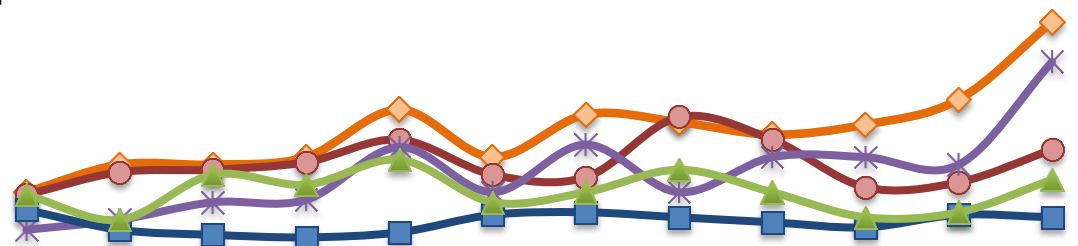
	Sep-13	Oct-13	Nov-13	Dec-13	Jan-14	Feb-14	Mar-14	Apr-14	May-14	Jun-14	Jul-14	Aug-14
✱ Patient UI Rate	16.3	19.8	21.7	21.7	23.6	20.4	22.9	26.1	22.2	20.7	23.1	27.8
● Admission	46	31	32	31	40	27	31	55	38	32	38	42

### 9. Unusual Incidents by Severity



	Sep-13	Oct-13	Nov-13	Dec-13	Jan-14	Feb-14	Mar-14	Apr-14	May-14	Jun-14	Jul-14	Aug-14
□ 1) Low	46	74	72	63	73	59	53	96	74	56	70	91
△ 2) Medium	78	69	71	90	101	81	107	93	86	83	87	99
● 3) High	21	29	35	26	41	28	32	23	32	35	42	57
◇ 4) Catstrp	0	0	0	0	0	1	0	0	1	0	0	0
Total UI	145	172	178	179	215	169	192	212	193	174	199	247

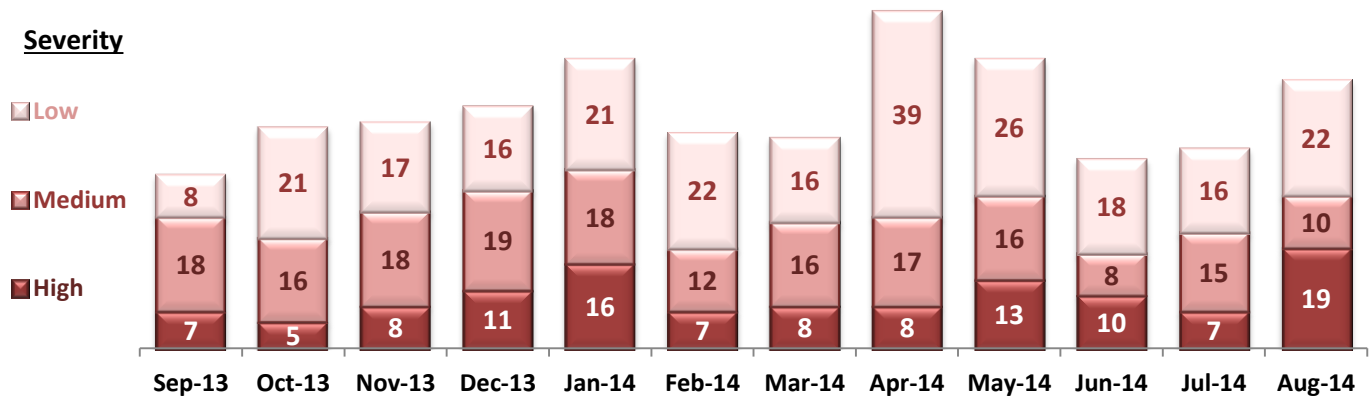
### 10. Selected Types of Incidents



	Sep-13	Oct-13	Nov-13	Dec-13	Jan-14	Feb-14	Mar-14	Apr-14	May-14	Jun-14	Jul-14	Aug-14
◇ Aggressive Behavior	34	45	45	48	67	48	65	62	57	61	71	102
● Physical Assault	33	42	43	46	55	41	40	64	55	36	38	51
✱ Pysch Emerg.	19	23	30	31	52	34	53	34	48	48	45	86
■ Fall	27	19	17	16	18	25	26	24	22	20	25	24
▲ Injury	33	23	41	37	47	30	34	43	34	24	26	39

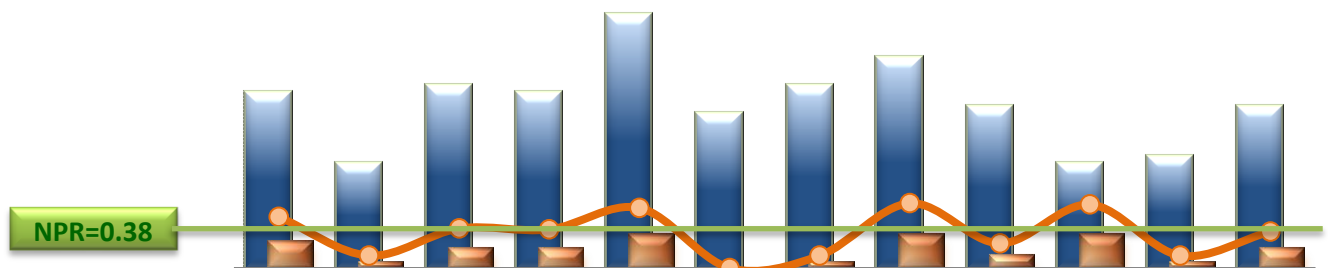
\* These are incident types that are frequently reported. Some incidents may be counted in multiple categories. For example, a physical assault incident that accompanied psychiatric emergency and injury is counted under psychiatric emergency and injury as well as under physical assault. Injury is broadly defined to include any type of injuries regardless of the cause or severity level.

### 11. Physical Assaults by Severity



\* Any physical assault that accompanies a code 13 or results in extensive injury needing off-unit treatment or transfer to ER is considered to be high severity, any physical assault that causes a minor injury that can be treated on unit is considered to be medium severity, and physical assault events that result in no injury are considered to be low severity.

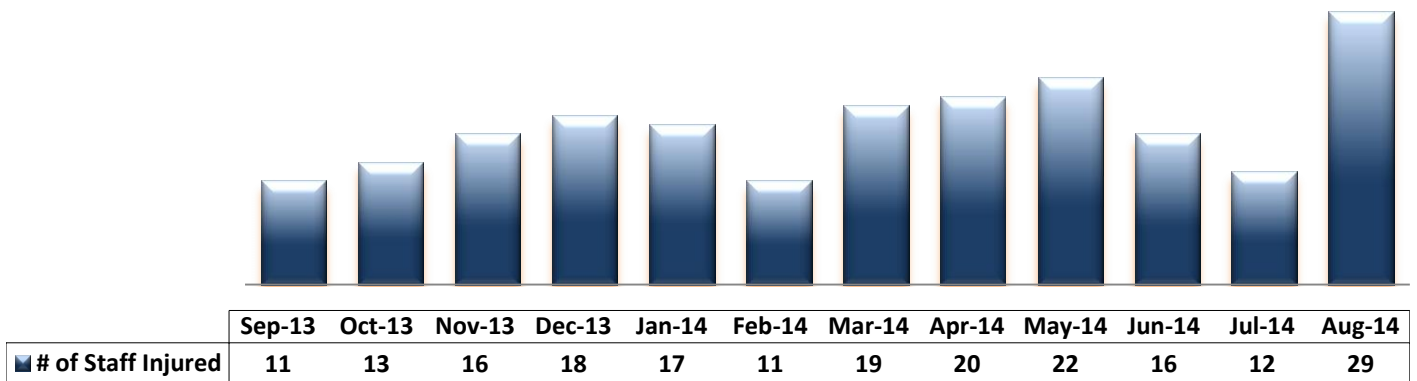
### 12. Patient Injuries



	Sep-13	Oct-13	Nov-13	Dec-13	Jan-14	Feb-14	Mar-14	Apr-14	May-14	Jun-14	Jul-14	Aug-14
Total Pts Injured	25	15	26	25	36	22	26	30	23	15	16	23
Major Pt Injuries*	4	1	3	3	5	0	1	5	2	5	1	3
Patient Injury Rate	0.51	0.12	0.39	0.38	0.60	0.00	0.12	0.64	0.24	0.63	0.12	0.36

\* Injury is broadly defined to include any type of injuries regardless of the cause or severity level. The total number of patients injured represents all of the reported injuries including minor injuries treated with first aid alone. However, the patient injury rate considers only the number of patient injuries that required beyond first-aid level treatment based on the NRI definition and the patient injury rate is the number of 'major' patient injuries per every 1000 inpatient days

### 13. Staff Injuries

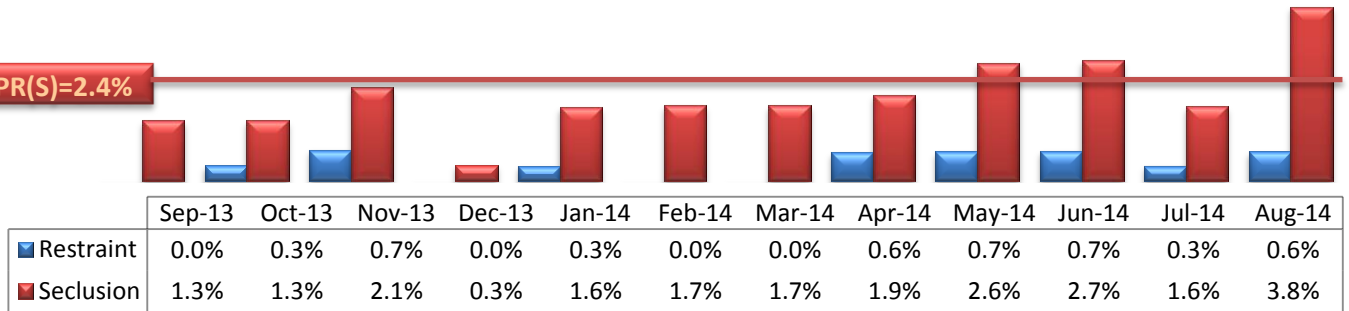


\* Injury is broadly defined to include any type of injuries regardless of the cause or severity level. The total number of staff injured represents all of the reported staff injuries including minor injuries treated with first aid alone.

### 14. Percent of Patients Restrained or Secluded

NPR(R)=5.8%

NPR(S)=2.4%

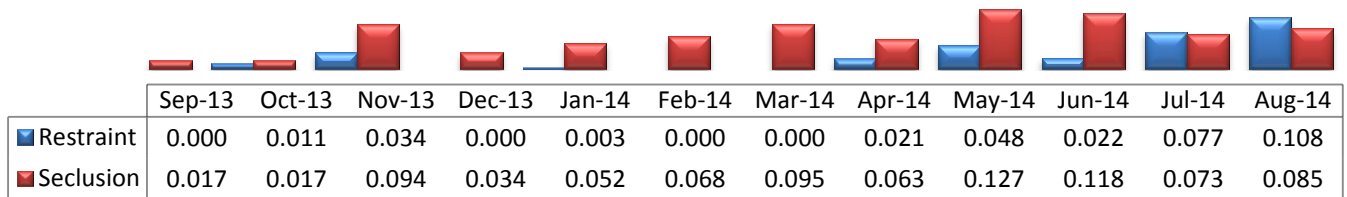


\* Percent of unique patients who were restrained at least once and percent of unique patients who were secluded at least once. The denominator includes all individuals who were served in care >=1 day during month.

### 15. Restraint Hours Rate & Seclusion Hours Rate

NPR(R)=0.71

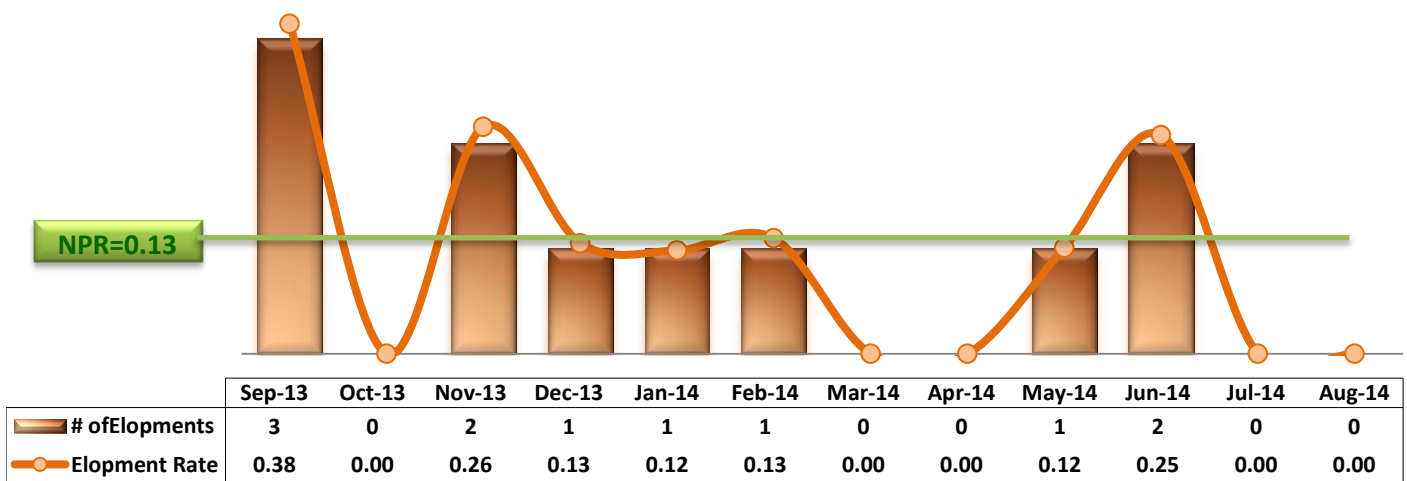
NPR(S)=0.44



\* Restraint/Seclusion Hours Rate: Number of hours spent in restraint/seclusion for every 1000 inpatient hours.

### 16. Elopements

NPR=0.13



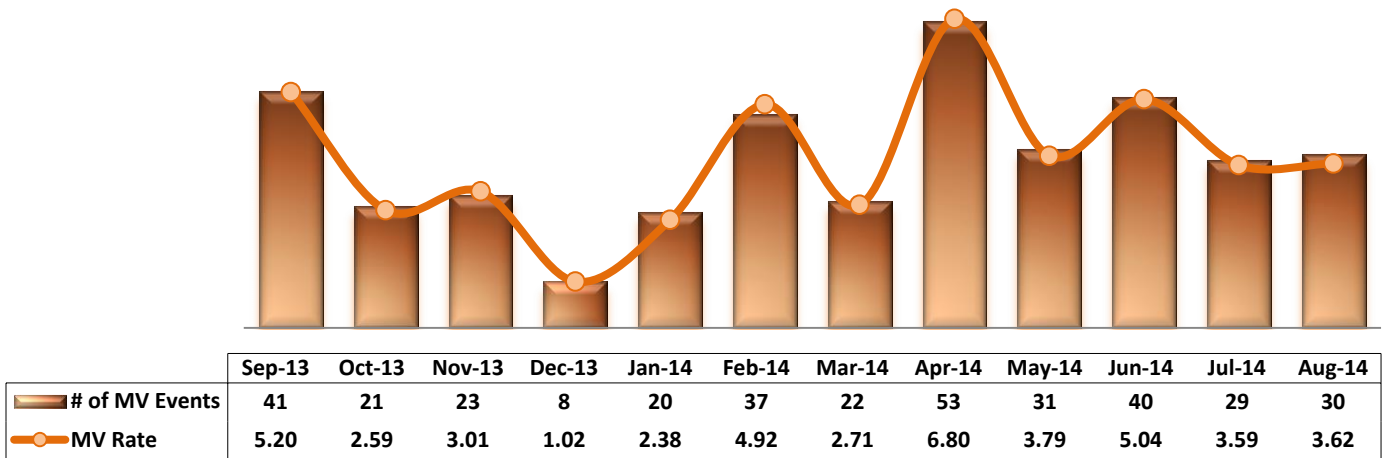
\* It counts the total number of unauthorized leaves for any duration that were initiated during month and were recorded in Avatar. The elopement rate is the number of those unauthorized leaves that occurred for every 1000 inpatient days.



**Key Trends: Medication Documentation, Medication Variance, ADR, and STAT (17~21)**

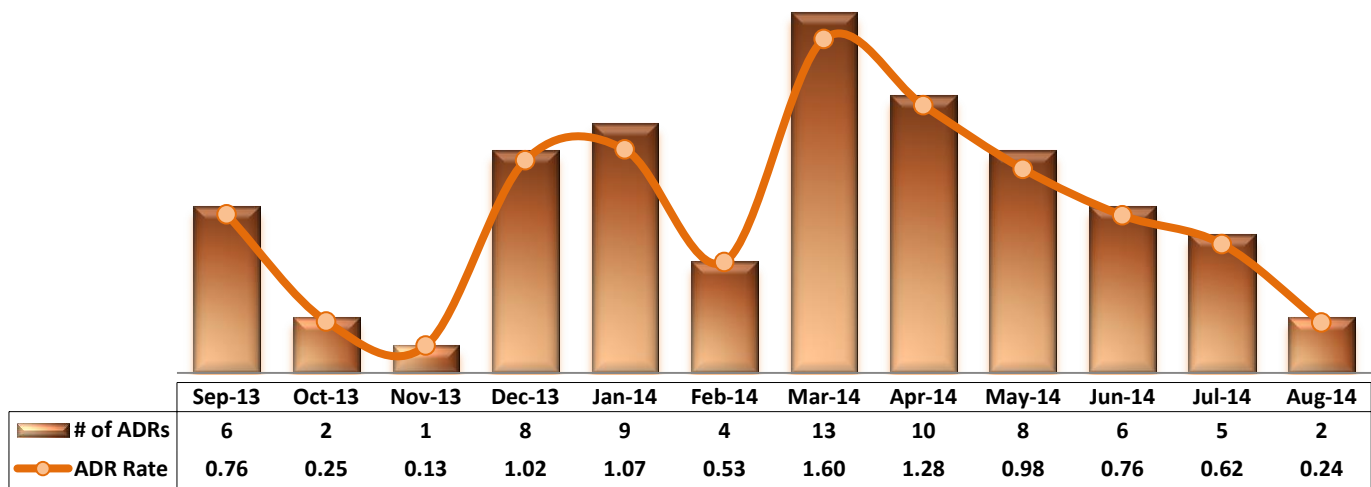
- The number and rate of reported ADRs decreased each month since March 2014: to two (2) in August from 13 in March.
- The rate of missing documentation on medication administration slightly decreased to 0.64% in August from 0.66% in July 2014.
- The medication refusal rate in August increased to the highest level: 7.1% of medication doses could not be administered as individuals in care refused the medication. The average medication refusal rate for the past 12 months is 5.6%.
- The number of STAT events (104) and unique individuals involved in one or more STAT events (37) in August is double the number in July 2014. The number of individuals involved in 3 or more events also increased from 7 in July to 12 in August.

**17. Reported Medication Variance Events**



\* MV Rate: Number of reported medication variance events that occurred for every 1000 inpatient days.

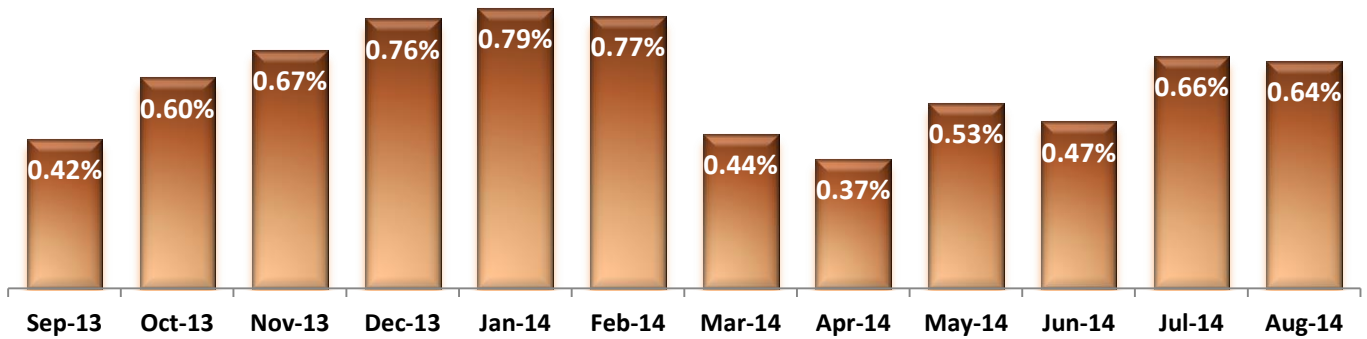
**18. Reported Adverse Drug Reactions**



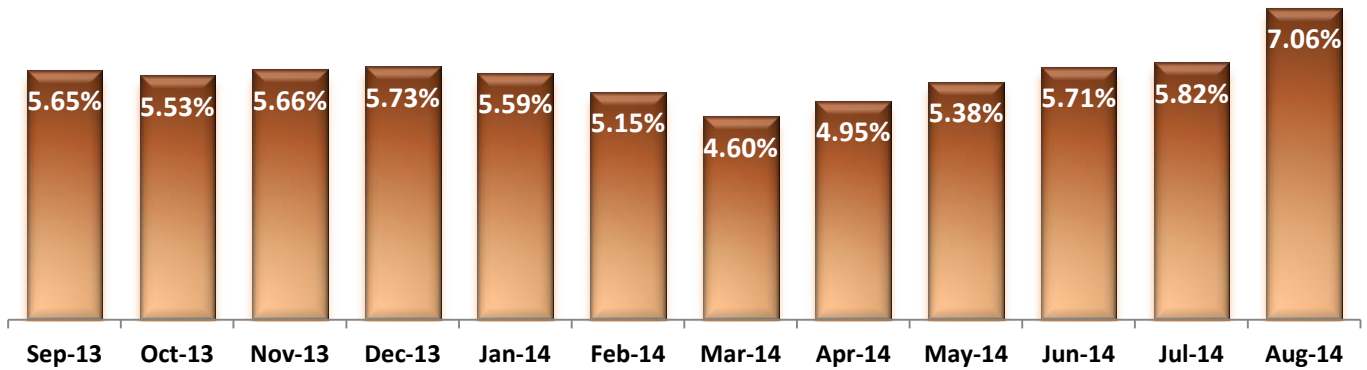
\* ADR Rate: Number of reported adverse drug reaction events that occurred for every 1000 inpatient days.



### 19. Percent of Missing Documentation on Med-Administration

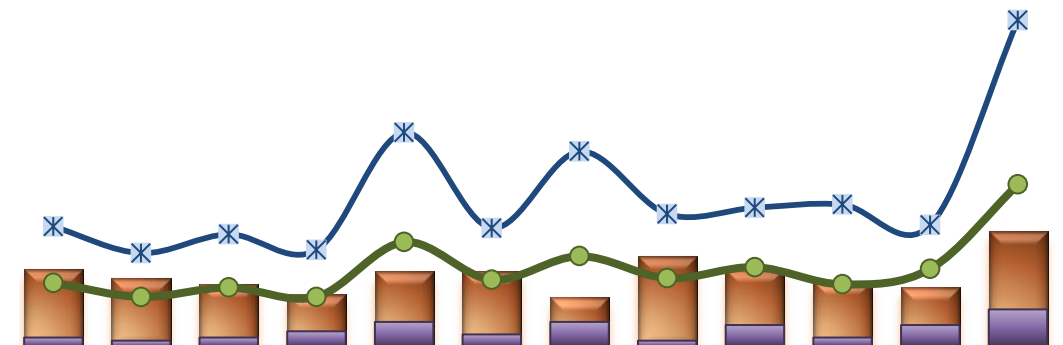


### 20. Medication Refusal Rate\*



\* Medication Refusal Rate: the number of refused medication doses divided by the total number of doses scheduled for administration.

### 21. Number of STAT Events and Individuals Involved

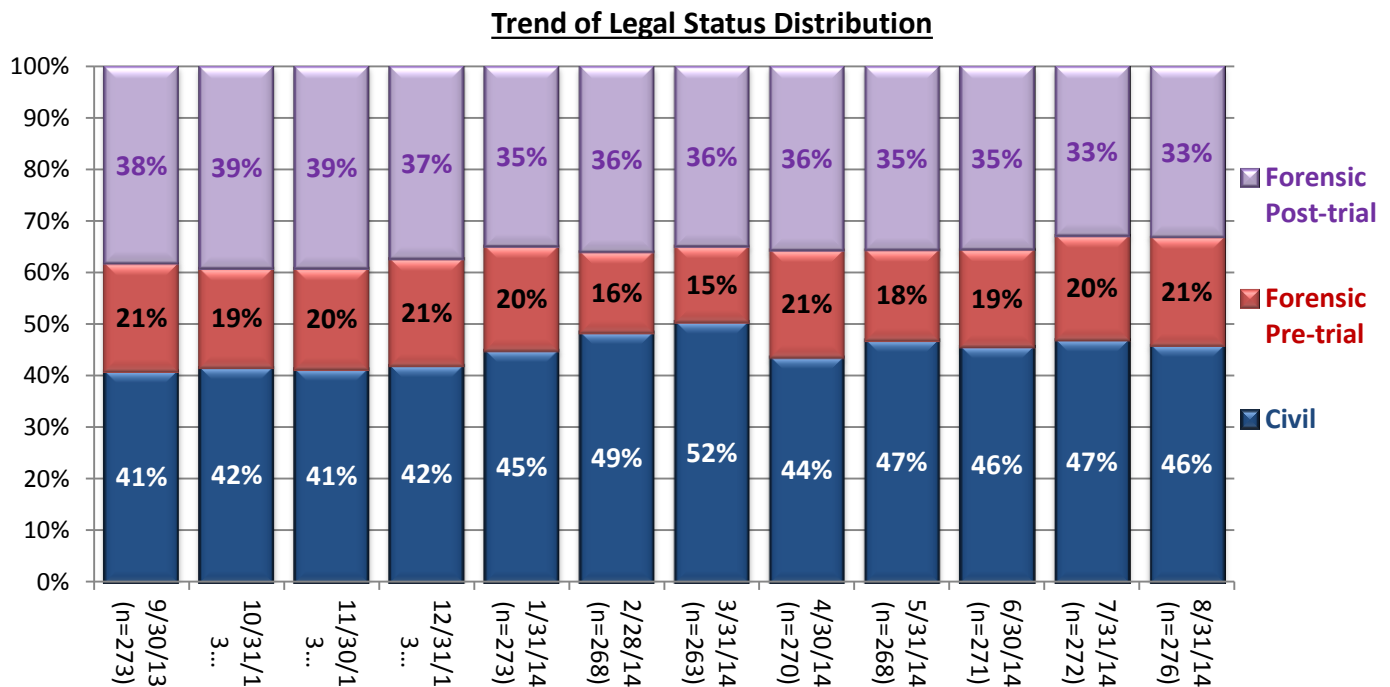
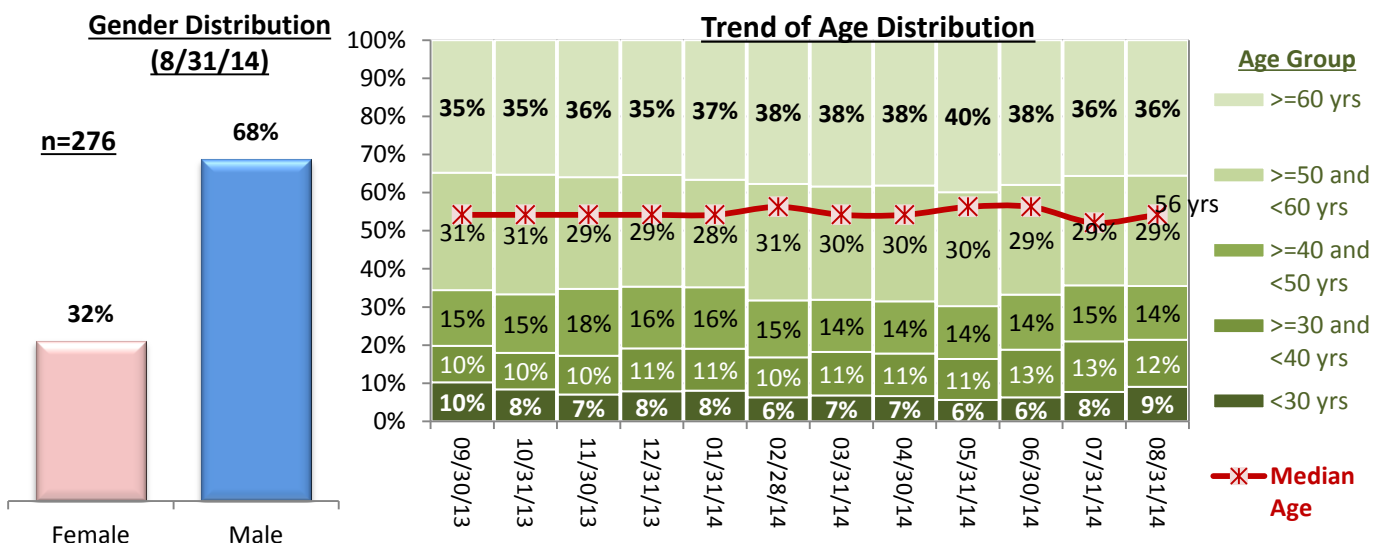


	Sep-13	Oct-13	Nov-13	Dec-13	Jan-14	Feb-14	Mar-14	Apr-14	May-14	Jun-14	Jul-14	Aug-14
IICs w/ >=1 STAT	25	22	20	17	24	24	16	29	25	21	19	37
IICs w/ >=3 STAT Events	3	2	3	5	8	4	8	2	7	3	7	12
Total STAT Events	41	32	38	32	67	43	58	44	51	40	50	104
Total STAT Orders	77	60	72	62	137	76	125	85	89	91	78	209

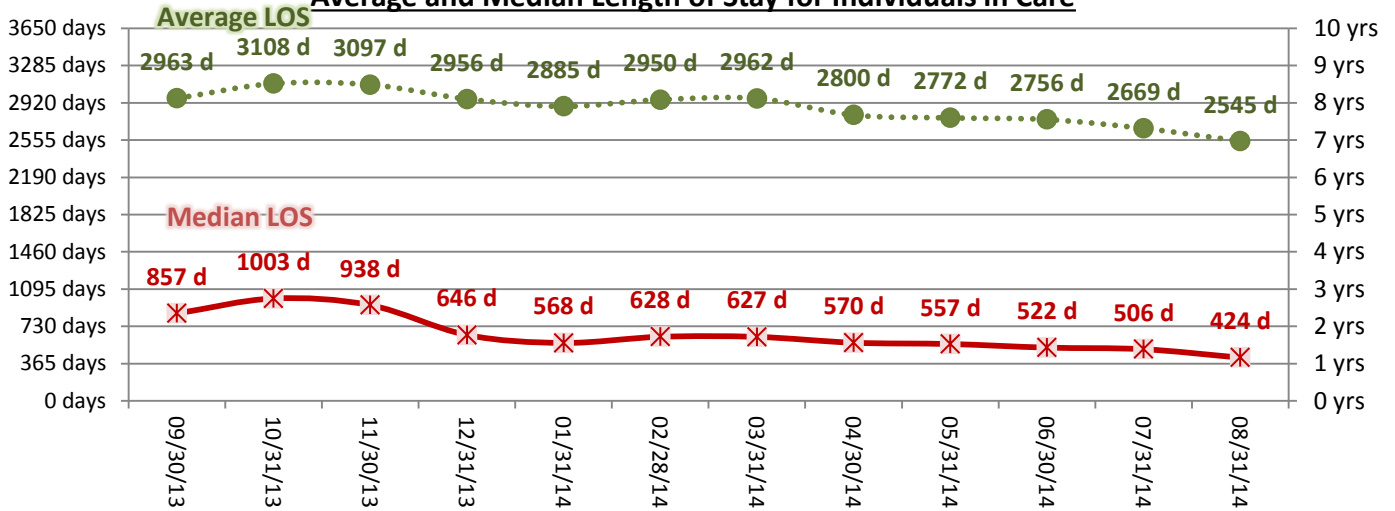
**Key Trends: Demographics, Legal Status, and Length of Stay (22)**

- The gender distribution slightly changes month by month but overall about 3 out of 10 individuals are female.
- About two out of three individuals in care are 50 years or older and the median age is 56 years old as of August 31, 2014.
- The proportion of forensic pre-trial population gradually increased since May 2013 and it composed 21% of all individuals in care as of August 31, 2014.
- The median length of stay (LOS) of individuals remaining in care continued to decrease gradually since February 2014, falling to the lowest level at about 14 months as of August 31, 2014. Recent admissions have shorter LOS and a high number of admissions over the past 6 months has contributed to an increase of the proportion of recent admissions among the total population in care, constantly lowering the median LOS.

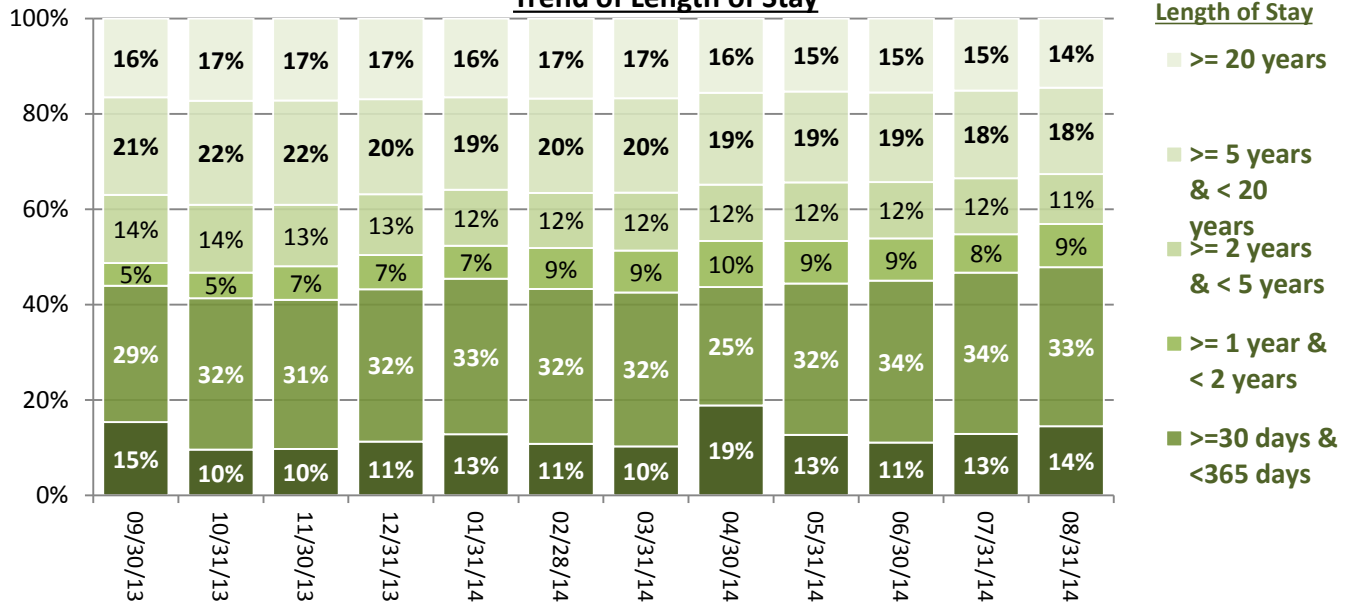
**22. Demographics and Length of Stay**



**Average and Median Length of Stay for Individuals in Care**



**Trend of Length of Stay**



## Performance Related Information for Staff &amp; Managers

## 1. Census, Admissions, Discharges &amp; Transfers

Data Source: Avatar

Updated as of 09/16/14

Category	Sep-13	Oct-13	Nov-13	Dec-13	Jan-14	Feb-14	Mar-14	Apr-14	May-14	Jun-14	Jul-14	Aug-14	Monthly Average	Total (12mths)	Figure	
Admissions	Civil	22	15	12	11	23	15	16	17	20	10	13	18	16	192	Figure 1
	Pre-trial	21	14	18	19	16	11	11	34	16	20	25	20	19	225	
	Post-trial	3	2	2	1	1	1	4	4	2	2	0	4	2	26	
	<b>Total</b>	<b>46</b>	<b>31</b>	<b>32</b>	<b>31</b>	<b>40</b>	<b>27</b>	<b>31</b>	<b>55</b>	<b>38</b>	<b>32</b>	<b>38</b>	<b>42</b>	<b>37</b>	<b>443</b>	
Discharges	Civil	18	23	17	7	16	21	21	29	15	14	12	21	18	214	Figure 2
	Pre-trial	7	16	16	12	12	11	10	15	22	14	19	16	14	170	
	Post-trial	1	4	4	2	5	0	5	4	3	1	6	1	3	36	
	<b>Total</b>	<b>26</b>	<b>43</b>	<b>37</b>	<b>21</b>	<b>33</b>	<b>32</b>	<b>36</b>	<b>48</b>	<b>40</b>	<b>29</b>	<b>37</b>	<b>38</b>	<b>35</b>	<b>420</b>	
Net Increase During Month	Civil	4	-8	-5	4	7	-6	-5	-12	5	-4	1	-3		-22	
	Pre-trial	14	-2	2	7	4	0	1	19	-6	6	4	4		55	
	Post-trial	2	-2	-2	-1	-4	1	-1	0	-1	1	-6	3		-10	
	<b>Total</b>	<b>20</b>	<b>-12</b>	<b>-5</b>	<b>10</b>	<b>7</b>	<b>-5</b>	<b>-5</b>	<b>7</b>	<b>-2</b>	<b>3</b>	<b>1</b>	<b>4</b>		<b>23</b>	
All Individuals on Roll at End of Month	273	261	256	266	273	268	263	270	268	271	272	276	268			
a. Present on Unit	268	256	250	262	269	263	256	268	260	267	271	270	263			
b. On AL	3	4	5	2	3	5	7	2	8	4	1	6	4			
c. On UL	2	1	1	2	1	0	0	0	0	0	0	0	1			
All Individuals on Roll: Daily Average during Month*	266	266	260	258	274	272	266	264	268	270	265	271	267			Figure 3
a. Present on Unit	263	261	255	253	271	268	262	260	264	265	261	267	262			
b. On AL	2	4	4	3	2	3	4	4	4	5	4	4	4			
c. On UL	1	1	1	1	2	1	0	0	0	0	0	0	0			
Patient Days**	7891	8101	7649	7844	8394	7514	8115	7789	8171	7941	8084	8277	7981	95770		
Inter-Unit Transfers during Month	10	5	5	6	27	11	11	4	10	7	7	11	10	114	Figure 4	
Medical Leaves Initiated during Month	Emergency	10	20	14	13	14	9	18	8	18	20	24	16	15	184	
	Non-Emer	22	39	27	34	25	32	25	30	34	81	88	67	42	504	
	<b>Total</b>	<b>32</b>	<b>59</b>	<b>41</b>	<b>47</b>	<b>39</b>	<b>41</b>	<b>43</b>	<b>38</b>	<b>52</b>	<b>101</b>	<b>112</b>	<b>83</b>	<b>57</b>	<b>688</b>	
Non-Medical Leaves Initiated during Month	97	146	121	138	142	141	175	147	230	439	430	386	216	2592		
UL Initiated during Month	3	0	2	1	1	1	0	0	1	2	0	0	1	11		
Total Unique Patients Served during Month	299	299	291	287	306	300	299	315	306	300	305	312	302			
30 Day Readmission***	Civil	0	1	0	0	0	0	0	0	0	0		0	1		
	Pre-trial	1	1	1	0	0	0	0	0	1	0	1	0	5		
	Post-trial	0	0	0	0	0	0	0	1	0	0	0	0	1		
	<b>Total</b>	<b>1</b>	<b>2</b>	<b>1</b>	<b>0</b>	<b>0</b>	<b>0</b>	<b>0</b>	<b>1</b>	<b>1</b>	<b>0</b>	<b>1</b>	<b>1</b>	<b>7</b>		

\* This is the average number of individuals served on a given day for the respective month. Due to rounding from average calculation, numbers from its subcategories a, b, & c may not add up to the total number on this row.

\*\* It counts the number of patients who are present on the unit and excludes those on authorized or unauthorized leave at 11:59pm on a given day.

\*\*\* Number of patients returning within 30 days of discharges that occurred during month.

## Performance Related Information for Staff &amp; Managers

## 2. Key Performance Indicators

Data Source: UI DB, MV DB, ADR DB, Restraint/Seclusion Log, and Avatar

Updated as of 09/16/14

Category	Sep-13	Oct-13	Nov-13	Dec-13	Jan-14	Feb-14	Mar-14	Apr-14	May-14	Jun-14	Jul-14	Aug-14	Monthly Average	NPR* (Jun-13)	Figure
30 Day Readmit (Discharge Cohort)**	Civil	0.0%	4.3%	0.0%	0.0%	0.0%	0.0%	0.0%	0.0%	0.0%	0.0%	0.0%	0.5%		Figure 5
	Pre-trial	14.3%	6.3%	6.3%	0.0%	0.0%	0.0%	0.0%	0.0%	4.5%	0.0%	5.3%	3.2%		
	Post-trial	0.0%	0.0%	0.0%	0.0%	0.0%	N/A	0.0%	25.0%	0.0%	0.0%	0.0%	3.0%		
	Combined	3.8%	4.7%	2.7%	0.0%	0.0%	0.0%	0.0%	2.1%	2.5%	0.0%	2.7%	1.8%	6.9%	
Number of Unusual Incidents*	145	172	178	179	215	169	192	212	193	174	199	247	190		Figure 6
Patient Unusual Incident Rate	16.3	19.8	21.7	21.7	23.6	20.4	22.9	26.1	22.2	20.7	23.1	27.8	22.2		Figure 7
UI by Severity	Catastrophe	0	0	0	0	0	1	0	0	1	0	0	0		Figure 9
	High	21	29	35	26	41	28	32	23	32	35	42	57	33	
	Medium	78	69	71	90	101	81	107	93	86	83	87	99	87	
	Low	46	74	72	63	73	59	53	96	74	56	70	91	69	
Physical Assault Incident Rate	4.2	5.2	5.6	5.9	6.6	5.5	4.9	8.2	6.7	4.5	4.7	6.2	5.7		
Selected Types of Incidents	Physical Assault	33	42	43	46	55	41	40	64	55	36	38	51	45	Figure 10
	Aggressive Behav.	34	45	45	48	67	48	65	62	57	61	71	102	59	
	Psych Emergency	19	23	30	31	52	34	53	34	48	48	45	86	42	
	Fall	27	19	17	16	18	25	26	24	22	20	25	24	22	
	Injury	33	23	41	37	47	30	34	43	34	24	26	39	34	
Physical Assaults by Severity	High	7	5	8	11	16	7	8	8	13	10	7	19	13	Figure 11
	Medium	18	16	18	19	18	12	16	17	16	8	15	10	15	
	Low	8	21	17	16	21	22	16	39	26	18	16	22	20	
Patient Injury Rate***	0.51	0.12	0.39	0.38	0.60	0.00	0.12	0.64	0.24	0.63	0.12	0.36	0.34	0.38	Figure 12
Patients with Major Injuries***	4	1	3	3	5	0	1	5	2	5	1	3	3		
Total Patients Injured***	25	15	26	25	36	22	26	30	23	15	16	23	24		
Total Staff Injured***	11	13	16	18	17	11	19	20	22	16	12	29	17		Figure 13
Elopement Rate	0.38	0.00	0.26	0.13	0.12	0.13	0.00	0.00	0.12	0.25	0.00	0.00	0.12	0.13	Figure 16
Medication Variance Rate	5.20	2.59	3.01	1.02	2.38	4.92	2.71	6.80	3.79	5.04	3.59	3.62	3.71		Figure 17
Adverse Drug Reaction Rate	0.76	0.25	0.13	1.02	1.07	0.53	1.60	1.28	0.98	0.76	0.62	0.24	0.77		Figure 18
Missing Med-Admin Documentation	0.42%	0.60%	0.67%	0.76%	0.79%	0.77%	0.44%	0.37%	0.53%	0.47%	0.66%	0.64%	0.59%		Figure 19
Percent of Medication Refusal	5.65%	5.53%	5.66%	5.73%	5.59%	5.15%	4.60%	4.95%	5.38%	5.71%	5.82%	7.06%	5.57%		Figure 20
Percent of Patients Restrained	0.0%	0.3%	0.7%	0.0%	0.3%	0.0%	0.0%	0.6%	0.7%	0.7%	0.3%	0.6%	0.4%	5.8%	Figure 14
Percent of Patients Secluded	1.3%	1.3%	2.1%	0.3%	1.6%	1.7%	1.7%	1.9%	2.6%	2.7%	1.6%	3.8%	1.9%	2.4%	
Restraint Hours Rate	0.000	0.011	0.034	0.000	0.003	0.000	0.000	0.021	0.048	0.022	0.077	0.108	0.027	0.71	Figure 15
Seclusion Hours Rate	0.017	0.017	0.094	0.034	0.052	0.068	0.095	0.063	0.127	0.118	0.073	0.085	0.070	0.44	

\* National Public Rate, NASMHPD Research Institute, National Research Institute (NRI), Data as of June 2013, Published in November 2013.

\*\* Percentage of patients returning within 30 days of discharges that occurred during month

\*\*\* Refer to the next page [UI &amp; Medication]

Performance Related Information for Staff & Managers

**3. Unusual Incident & Medication**

Data Source: UI DB, MV DB, ADR DB, and Avatar

Updated as of 09/16/14

Category	Sep-13	Oct-13	Nov-13	Dec-13	Jan-14	Feb-14	Mar-14	Apr-14	May-14	Jun-14	Jul-14	Aug-14	Monthly Average	Total (12mths)	NPR* (Jun-13)	
Unusual Incidents (excluding MV)**	Total UIs	145	172	178	179	215	169	192	212	193	174	199	247	190	2275	
	Major UIs Only	109	127	128	123	141	129	142	146	147	126	150	186	138	1654	
	Pt Involved UI Only	129	160	166	170	198	153	186	203	181	164	187	230	177	2127	
	Patient UI Rate	16.3	19.8	21.7	21.7	23.6	20.4	22.9	26.1	22.2	20.7	23.1	27.8	22.2		
Unique Pts Involved in UI	107	112	100	104	115	105	103	130	106	100	107	115	109	1304		
Selected Types of Incidents	Physical Assault	33	42	43	46	55	41	40	64	55	36	38	51	45	544	
	Aggressive Behavior	34	45	45	48	67	48	65	62	57	61	71	102	59	705	
	Psych Emergency	19	23	30	31	52	34	53	34	48	48	45	86	42	503	
	Fall	27	19	17	16	18	25	26	24	22	20	25	24	22	263	
	Injury	33	23	41	37	47	30	34	43	34	24	26	39	34	411	
Physical Assault Rate	4.2	5.2	5.6	5.9	6.6	5.5	4.9	8.2	6.7	4.5	4.7	6.2	5.7			
UI by Severity	Catastrophe	0	0	0	0	0	1	0	0	1	0	0	0	0	2	
	High	21	29	35	26	41	28	32	23	32	35	42	57	33	401	
	Medium	78	69	71	90	101	81	107	93	86	83	87	99	87	1045	
	Low	46	74	72	63	73	59	53	96	74	56	70	91	69	827	
Physical Assaults by Severity	High	7	5	8	11	16	7	8	8	13	10	7	19	13	119	
	Medium	18	16	18	19	18	12	16	17	16	8	15	10	15	183	
	Low	8	21	17	16	21	22	16	39	26	18	16	22	20	242	
Total Patients Injured***	25	15	26	25	36	22	26	30	23	15	16	23	24	282		
Patients with Major Injuries***	4	1	3	3	5	0	1	5	2	5	1	3	3	33		
Patient Injury Rate***	0.51	0.12	0.39	0.38	0.60	0.00	0.12	0.64	0.24	0.63	0.12	0.36	0.34		0.38	
Total Staff Injured**	11	13	16	18	17	11	19	20	22	16	12	29	17			
Total UIs Documented in Avatar	3	0	2	1	1	1	0	0	1	2	0	0	1	12		
Elopement Rate	0.38	0.00	0.26	0.13	0.12	0.13	0.00	0.00	0.12	0.25	0.00	0.00	0.12		0.13	
Med Variance (MV) Reports**	41	21	23	8	20	37	22	53	31	40	29	30	30	355		
MV Rate	5.20	2.59	3.01	1.02	2.38	4.92	2.71	6.80	3.79	5.04	3.59	3.62	3.71			
Adverse Drug Reactions Reports	6	2	1	8	9	4	13	10	8	6	5	2	6	74		
ADR Rate	0.76	0.25	0.13	1.02	1.07	0.53	1.60	1.28	0.98	0.76	0.62	0.24	0.77			
Total Med Administrations Scheduled	101049	95559	101422	102249	108474	98616	107326	104201	108187	104448	107179	105835		1244545		
Total Missing Documentations	427	570	684	780	860	759	469	381	568	493	704	680		7375		
Percent of Missing Documentation	0.42%	0.60%	0.67%	0.76%	0.79%	0.77%	0.44%	0.37%	0.53%	0.47%	0.66%	0.64%		0.59%		
Total Medication Doses Refused	5714	5280	5743	5861	6059	5080	4937	5163	5823	5969	6239	7472		69340		
Percent of Medication Refusal	5.65%	5.53%	5.66%	5.73%	5.59%	5.15%	4.60%	4.95%	5.38%	5.71%	5.82%	7.06%		5.57%		
Total STAT Orders	77	60	72	62	137	76	125	85	89	91	78	209	97		Figure 21	
Total STAT Events****	41	32	38	32	67	43	58	44	51	40	50	104	50			
Total Individuals Involved >=1 STAT	25	22	20	17	24	24	16	29	25	21	19	37	23			
Total Patients with >=3 STAT Events	3	2	3	5	8	4	8	2	7	3	7	12	5			

\* National Public Rate, NASMHPD Research Institute, National Research Institute (NRI), Data as of June 2013, Published in November 2013.

\*\* Numbers may change if any additional UI report is made after the data run date from UI database (around the 15th of the following month); According to the revised UI policy as of November 4, 2013, a medication variance (MV) incident became no longer considered to be an unusual incident, and a medication or vital sign refusal incident is not longer an UI as of May 2014. UI data for the past 12 months in this report has been updated to reflect this change and reanalyzed in order to show the UI trend in consistent logic.

\*\*\* Injury is broadly defined to include any type of injuries regardless of the cause or severity level. The total number of patients injured represents all of the reported injuries including minor injuries treated with first aid alone. However, the patient injury rate considers only the number of patient injuries that required beyond first-aid level treatment based on the NRI definition and the patient injury rate is the number of 'major' patient injuries per every 1000 inpatient days

\*\*\*\* One STAT event may involve more than one STAT order for the same patient. Any orders placed within 20 minute timeframe are considered to belong to one STAT event.

## Performance Related Information for Staff &amp; Managers

## 4. Restraint &amp; Seclusion

Data Source: Restraint/Seclusion Log and UI DB (for # of total events and patients) and Avatar (for patient days/hours)

Updated as of 09/16/14

Category	Sep-13	Oct-13	Nov-13	Dec-13	Jan-14	Feb-14	Mar-14	Apr-14	May-14	Jun-14	Jul-14	Aug-14	Monthly Average	Total (12mths)	NPR* (Jun-13)
Number of Restraint Events	0	2	2	0	1	0	0	2	6	4	7	7	2.6	31	
Number of Unique Patients Restrained	0	1	2	0	1	0	0	2	2	2	1	2	1.1		
Percentage of Patients Restrained	0.0%	0.3%	0.7%	0.0%	0.3%	0.0%	0.0%	0.6%	0.7%	0.7%	0.3%	0.6%	0.4%		5.8%
Total Restraint Hours (h:mm)	0:00	2:08	6:15	0:00	0:35	0:00	0:00	4:00	9:30	4:16	15:00	21:25	5:15	63:09	
Restraint Hours Rate	0.000	0.011	0.034	0.000	0.003	0.000	0.000	0.021	0.048	0.022	0.077	0.108	0.027		0.71
Number of Seclusion Events	4	4	11	6	6	13	15	10	20	22	14	21	12.2	146	
Number of Unique Patients Secluded	4	4	6	1	5	5	5	6	8	8	5	12	5.8		
Percentage of Patients Secluded	1.3%	1.3%	2.1%	0.3%	1.6%	1.7%	1.7%	1.9%	2.6%	2.7%	1.6%	3.8%	1.9%		2.4%
Total Seclusion Hours (h:mm)	3:10	3:20	17:11	6:20	10:34	12:15	18:27	11:47	24:49	22:32	14:14	16:51	13:27	161:30	
Seclusion Hours Rate	0.017	0.017	0.094	0.034	0.052	0.068	0.095	0.063	0.127	0.118	0.073	0.085	0.070		0.44

\* National Public Rate, NASMHPD Research Institute, National Research Institute (NRI), Data as of June 2013, Published in November 2013.



## Performance Related Information for Staff &amp; Managers

## 5. Demographic Information of Individuals in Care

Data Source: Avatar

Updated as of 09/16/14

Category	Sub-group	Sep-13	Oct-13	Nov-13	Dec-13	Jan-14	Feb-14	Mar-14	Apr-14	May-14	Jun-14	Jul-14	Aug-14	Monthly Average	Percent*
<b>Total Active (on Roll) at End of Month*</b>		<b>273</b>	<b>261</b>	<b>256</b>	<b>266</b>	<b>273</b>	<b>268</b>	<b>263</b>	<b>270</b>	<b>268</b>	<b>271</b>	<b>272</b>	<b>276</b>	<b>268</b>	
<b>Gender</b>	Female	70	68	69	72	79	75	76	82	84	81	82	88	<b>77</b>	<b>28.8%</b>
	Male	203	193	187	194	194	193	187	188	184	190	190	188	<b>191</b>	<b>71.2%</b>
<b>Age</b>	<b>Median Age (Years)</b>	<b>56 yrs</b>	<b>56 yrs</b>	<b>56 yrs</b>	<b>56 yrs</b>	<b>56 yrs</b>	<b>57 yrs</b>	<b>56 yrs</b>	<b>56 yrs</b>	<b>57 yrs</b>	<b>57 yrs</b>	<b>55 yrs</b>	<b>56 yrs</b>	<b>56 yrs</b>	
	<30 years old	28	22	18	21	22	17	18	18	15	17	21	25	<b>20</b>	<b>7.5%</b>
	>=30 and <40 years old	26	25	26	30	30	28	30	30	29	34	36	34	<b>30</b>	<b>11.1%</b>
	>=40 and <50 years old	40	40	45	43	44	40	36	37	37	39	40	39	<b>40</b>	<b>14.9%</b>
	>=50 and <60 years old	84	82	75	78	77	82	78	82	80	78	78	80	<b>80</b>	<b>29.7%</b>
	>=60 years old	95	92	92	94	100	101	101	103	107	103	97	98	<b>99</b>	<b>36.8%</b>
<b>Legal Status of Individuals on Roll at End of Month</b>	Emergency	27	18	19	26	34	33	35	31	36	33	28	25	<b>29</b>	<b>10.7%</b>
	Inpatient Commitment	22	24	23	23	26	28	28	30	31	33	36	39	<b>29</b>	<b>10.7%</b>
	Outpatient Commitment	21	25	23	22	22	22	32	19	18	22	28	23	<b>23</b>	<b>8.6%</b>
	Voluntary	42	42	41	41	41	47	43	38	41	36	36	40	<b>41</b>	<b>15.2%</b>
	<b>Civil Sub-total</b>	<b>112</b>	<b>109</b>	<b>106</b>	<b>112</b>	<b>123</b>	<b>130</b>	<b>138</b>	<b>118</b>	<b>126</b>	<b>124</b>	<b>128</b>	<b>127</b>	<b>121</b>	<b>45.2%</b>
	DC Exam	55	48	49	54	54	41	38	35	30	30	28	30	<b>41</b>	<b>15.3%</b>
	Mentally Incompetent	2	2	1	1	1	1	2	21	17	21	27	28	<b>10</b>	<b>3.9%</b>
	<b>Forensic Pre-trial Sub-total</b>	<b>57</b>	<b>50</b>	<b>50</b>	<b>55</b>	<b>55</b>	<b>42</b>	<b>40</b>	<b>56</b>	<b>47</b>	<b>51</b>	<b>55</b>	<b>58</b>	<b>51</b>	<b>19.1%</b>
	NGBRI - DC	89	86	83	82	77	78	77	79	79	80	74	75	<b>80</b>	<b>29.8%</b>
	NGBRI - US	10	11	12	12	13	13	13	12	12	12	11	11	<b>12</b>	<b>4.4%</b>
	NGBRI - VI	1	1	1	1	1	1	1	1	1	1	1	1	<b>1</b>	<b>0.4%</b>
Dual Commitment	2	2	2	2	2	2	2	2	1	1	1	2	<b>2</b>	<b>0.7%</b>	
Sexual Psychopath (Miller Act)	2	2	2	2	2	2	2	2	2	2	2	2	<b>2</b>	<b>0.7%</b>	
<b>Forensic Post-trial Sub-total</b>	<b>104</b>	<b>102</b>	<b>100</b>	<b>99</b>	<b>95</b>	<b>96</b>	<b>95</b>	<b>96</b>	<b>95</b>	<b>96</b>	<b>89</b>	<b>91</b>	<b>97</b>	<b>36.0%</b>	
<b>Length of Stay</b>	<b>Median LOS (Days)</b>	<b>857 d</b>	<b>1003 d</b>	<b>938 d</b>	<b>646 d</b>	<b>568 d</b>	<b>628 d</b>	<b>627 d</b>	<b>570 d</b>	<b>557 d</b>	<b>522 d</b>	<b>506 d</b>	<b>424 d</b>	<b>654 d</b>	
	<b>Average LOS (Days)</b>	<b>2963 d</b>	<b>3108 d</b>	<b>3097 d</b>	<b>2956 d</b>	<b>2885 d</b>	<b>2950 d</b>	<b>2962 d</b>	<b>2800 d</b>	<b>2772 d</b>	<b>2756 d</b>	<b>2669 d</b>	<b>2545 d</b>	<b>2872 d</b>	
	<30 Days	42	25	25	30	35	29	27	51	34	30	35	40	<b>34</b>	<b>12.5%</b>
	>=30 ~ <365 Days	78	83	80	85	89	87	85	67	85	92	92	92	<b>85</b>	<b>31.6%</b>
	>= 1 Year & < 2 Years	13	14	18	19	19	23	23	26	24	24	22	25	<b>21</b>	<b>7.8%</b>
	>= 2 Years & < 5 Years	39	37	33	34	32	31	32	32	33	32	32	29	<b>33</b>	<b>12.3%</b>
	>= 5 Years & < 20 Years	56	57	56	53	53	53	52	52	51	51	50	50	<b>53</b>	<b>19.7%</b>
>= 20 Years	45	45	44	45	45	45	44	42	41	42	41	40	<b>43</b>	<b>16.1%</b>	

\* Counts the total number of individuals who are on the hospital roll at end of each month. This number serves as denominator to calculate percentage of each group.

Performance Related Information for Staff & Managers

6. Major Unusual Incidents by Incident Location/Unit

Data Source: UI DB

Updated as of 09/16/14

Category		Sep-13	Oct-13	Nov-13	Dec-13	Jan-14	Feb-14	Mar-14	Apr-14	May-14	Jun-14	Jul-14	Aug-14	Monthly Average	Total (12mths)	Percent
<b>Total Unusual Incidents</b>		<b>145</b>	<b>172</b>	<b>178</b>	<b>179</b>	<b>215</b>	<b>169</b>	<b>192</b>	<b>212</b>	<b>193</b>	<b>174</b>	<b>199</b>	<b>247</b>	<b>190</b>	<b>2275</b>	<b>100%</b>
Incident Location	1A	11	10	4	6	5	6	11	6	14	4	7	15	8	99	4%
	1B	10	14	8	7	13	16	13	7	9	9	21	19	12	146	6%
	1C	13	17	15	13	11	9	11	17	7	11	6	12	12	142	6%
	1D	11	10	10	14	27	17	27	11	27	22	19	29	19	224	10%
	1E	19	7	15	10	26	9	33	22	17	13	12	22	17	205	9%
	1F	17	27	28	34	39	33	24	27	19	15	37	32	28	332	15%
	1G	5	15	14	34	29	14	6	22	27	24	12	28	19	230	10%
	2A	4	8	5	3	1	7	3	5	3	3	6	10	5	58	3%
	2B	6	4	2	4	2	2	3	6	4	0	2	4	3	39	2%
	2C	7	10	20	20	10	12	15	19	19	19	22	19	16	192	8%
	2D	12	17	22	9	14	14	14	34	16	13	20	18	17	203	9%
	TLC	19	25	24	16	28	14	22	21	17	24	14	20	20	244	11%
	Other	11	8	11	9	10	16	10	15	14	17	21	19	13	161	7%
<b>Physical Assault</b>		<b>33</b>	<b>42</b>	<b>43</b>	<b>46</b>	<b>55</b>	<b>41</b>	<b>40</b>	<b>64</b>	<b>55</b>	<b>36</b>	<b>38</b>	<b>51</b>	<b>45</b>	<b>544</b>	<b>100%</b>
Incident Location	1A	1	3	1	2	2	1	1	1	5	0	2	2	2	21	4%
	1B	0	2	1	0	0	4	0	1	3	1	3	0	1	15	3%
	1C	4	4	4	3	3	2	0	5	2	3	1	0	3	31	6%
	1D	6	5	4	3	4	7	13	4	8	8	5	14	7	81	15%
	1E	6	2	6	4	13	0	12	8	7	3	5	2	6	68	13%
	1F	6	3	3	8	7	5	1	7	4	2	5	3	5	54	10%
	1G	1	5	8	16	10	8	3	8	9	4	3	8	7	83	15%
	2A	0	0	0	0	0	0	0	0	0	0	0	0	0	0	0%
	2B	0	0	0	0	0	0	0	0	0	0	0	2	0	2	0%
	2C	0	3	3	3	4	5	2	7	5	7	4	3	4	46	8%
	2D	2	8	8	4	6	4	3	15	8	3	1	11	6	73	13%
	TLC - Intensive	4	5	2	2	4	5	3	5	3	2	2	3	3	40	7%
	TLC - Transitional	2	1	3	0	1	0	1	1	0	0	2	4	1	15	3%
	Other	1	1	0	1	1	0	1	2	1	3	3	1	1	15	3%

Performance Related Information for Staff & Managers

6. Major Unusual Incidents by Incident Location/Unit

Data Source: UI DB

Updated as of 09/16/14

Category		Sep-13	Oct-13	Nov-13	Dec-13	Jan-14	Feb-14	Mar-14	Apr-14	May-14	Jun-14	Jul-14	Aug-14	Monthly Average	Total (12mths)	Percent
<b>Aggressive Behavior</b>		<b>34</b>	<b>45</b>	<b>45</b>	<b>48</b>	<b>67</b>	<b>48</b>	<b>65</b>	<b>62</b>	<b>57</b>	<b>61</b>	<b>71</b>	<b>102</b>	<b>59</b>	<b>705</b>	<b>130%</b>
Incident Location	1A	0	0	0	0	0	2	0	0	0	1	1	5	1	9	2%
	1B	0	0	0	0	0	1	4	0	0	0	3	7	1	15	3%
	1C	4	4	3	3	1	4	3	3	0	1	3	6	3	35	6%
	1D	1	2	2	0	8	3	9	2	10	5	4	12	5	58	11%
	1E	7	3	6	3	12	2	14	9	4	3	2	15	7	80	15%
	1F	4	8	15	11	18	19	15	13	9	10	20	18	13	160	29%
	1G	2	10	5	14	9	4	1	10	11	17	5	14	9	102	19%
	2A	2	1	2	2	0	4	1	3	2	2	4	7	3	30	6%
	2B	1	0	0	0	1	1	0	2	1	0	0	1	1	7	1%
	2C	3	3	3	5	2	4	6	3	8	10	12	6	5	65	12%
	2D	4	5	2	3	4	2	4	9	5	2	8	1	4	49	9%
	TLC - Intensive	3	6	3	5	7	1	6	5	6	7	4	3	5	56	10%
	TLC - Transitional	1	3	2	0	4	0	2	3	0	2	3	4	2	24	4%
	Other	2	0	2	2	1	1	0	0	1	1	2	3	1	15	3%
<b>Psych Emergency</b>		<b>19</b>	<b>23</b>	<b>30</b>	<b>31</b>	<b>52</b>	<b>34</b>	<b>53</b>	<b>34</b>	<b>48</b>	<b>48</b>	<b>45</b>	<b>86</b>	<b>42</b>	<b>503</b>	<b>92%</b>
Incident Location	1A	0	0	0	0	0	1	0	0	0	1	1	1	0	4	1%
	1B	0	0	0	0	0	3	3	0	0	0	2	3	1	11	2%
	1C	3	1	4	1	0	1	1	0	0	2	1	3	1	17	3%
	1D	3	2	1	0	8	3	7	2	10	6	3	18	5	63	12%
	1E	5	2	9	2	15	1	23	8	5	3	1	16	8	90	17%
	1F	6	3	11	10	17	16	10	5	7	4	19	13	10	121	22%
	1G	1	8	5	16	10	5	3	9	16	17	5	16	9	111	20%
	2A	0	0	0	0	0	0	0	2	0	0	0	0	0	2	0%
	2B	0	1	0	0	0	0	0	0	0	0	0	1	0	2	0%
	2C	1	0	0	0	0	1	4	4	4	10	7	7	3	38	7%
	2D	0	4	0	2	1	2	1	3	2	0	3	5	2	23	4%
	TLC - Intensive	0	2	0	0	1	1	1	0	4	4	2	2	1	17	3%
	TLC - Transitional	0	0	0	0	0	0	0	1	0	0	0	1	0	2	0%
	Other	0	0	0	0	0	0	0	0	0	0	1	1	0	2	0%

Performance Related Information for Staff & Managers

6. Major Unusual Incidents by Incident Location/Unit

Data Source: UI DB

Updated as of 09/16/14

Category		Sep-13	Oct-13	Nov-13	Dec-13	Jan-14	Feb-14	Mar-14	Apr-14	May-14	Jun-14	Jul-14	Aug-14	Monthly Average	Total (12mths)	Percent
<b>Fall</b>		<b>27</b>	<b>19</b>	<b>17</b>	<b>16</b>	<b>18</b>	<b>25</b>	<b>26</b>	<b>24</b>	<b>22</b>	<b>20</b>	<b>25</b>	<b>24</b>	<b>22</b>	<b>263</b>	<b>100%</b>
Incident Location	1A	3	2	1	3	2	3	5	1	3	0	1	4	2	28	11%
	1B	3	4	1	2	1	3	2	2	1	1	4	6	3	30	11%
	1C	3	2	1	1	4	2	2	2	4	2	0	1	2	24	9%
	1D	3	2	3	1	1	2	4	1	5	0	5	2	2	29	11%
	1E	4	1	2	1	3	1	1	2	0	2	0	1	2	18	7%
	1F	1	0	0	1	3	1	1	1	0	1	1	3	1	13	5%
	1G	0	0	1	2	0	1	1	1	2	0	2	2	1	12	5%
	2A	1	2	0	0	0	1	0	0	0	0	0	0	0	4	2%
	2B	2	1	2	3	0	1	2	4	0	0	0	0	1	16	6%
	2C	1	0	0	0	0	1	4	1	2	1	3	1	1	14	5%
	2D	2	1	2	0	1	2	2	7	1	4	4	1	2	27	10%
	TLC - Intensive	2	2	2	2	0	0	0	1	0	1	0	0	1	10	4%
	TLC - Transitional	1	1	1	0	0	1	0	1	1	2	1	2	1	11	4%
	Other	1	1	1	0	3	6	2	0	3	6	2	2	2	27	10%
<b>Physical Injury</b>		<b>33</b>	<b>23</b>	<b>41</b>	<b>37</b>	<b>47</b>	<b>30</b>	<b>34</b>	<b>43</b>	<b>34</b>	<b>24</b>	<b>26</b>	<b>39</b>	<b>34</b>	<b>411</b>	<b>100%</b>
Incident Location	1A	2	1	2	1	0	1	4	3	3	2	2	2	2	23	6%
	1B	3	0	2	0	1	2	2	1	3	1	4	2	2	21	5%
	1C	3	1	2	3	3	2	1	0	2	2	0	2	2	21	5%
	1D	7	4	5	4	11	6	5	1	6	2	3	6	5	60	15%
	1E	4	2	6	2	7	1	8	6	3	3	5	4	4	51	12%
	1F	4	1	2	10	10	5	1	3	1	1	1	4	4	43	10%
	1G	1	5	4	11	3	5	2	5	9	2	2	6	5	55	13%
	2A	1	1	1	0	0	0	0	0	0	0	0	0	0	3	1%
	2B	1	1	1	1	0	1	2	1	1	0	1	0	1	10	2%
	2C	1	1	3	1	4	1	5	7	2	2	3	4	3	34	8%
	2D	2	2	4	3	3	3	2	8	1	1	2	1	3	32	8%
	TLC - Intensive	2	1	4	1	2	1	2	2	2	1	2	1	2	21	5%
	TLC - Transitional	1	1	2	0	0	0	0	0	0	2	0	2	1	8	2%
	Other	1	2	3	0	3	2	0	6	2	4	2	4	2	29	7%

\* Not every incident is a major incident. This counts only those incidents that were classified to be major based on the policy.