

Government of the District of Columbia
Department of Mental Health (DMH)



Performance Related Information for Staff and Managers

PRISM

SEPTEMBER 2011

Table of Contents

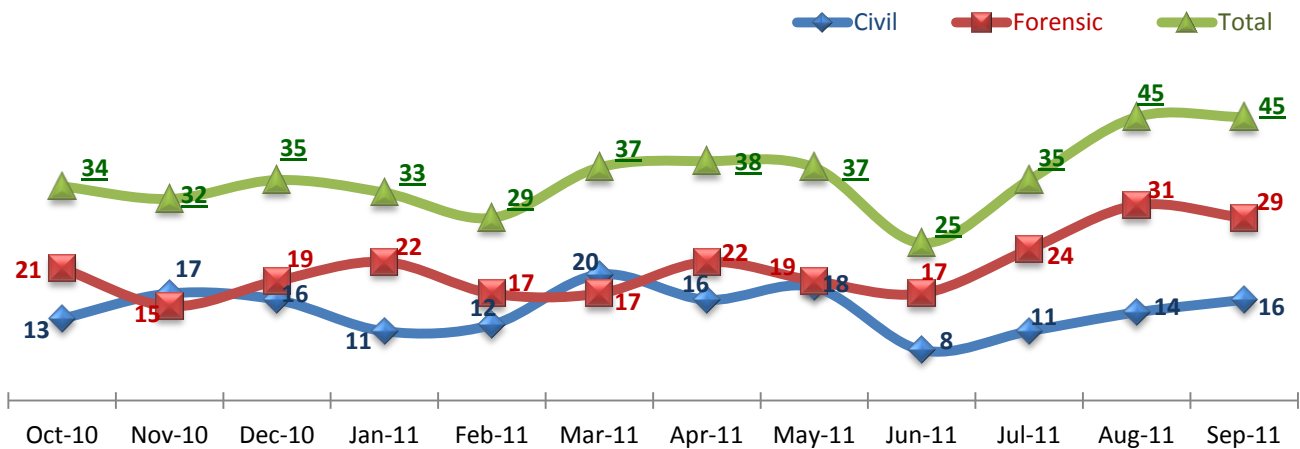


1.	Admissions to SEH	1
2.	Discharges from SEH.....	1
3.	Average Daily Census	1
4.	Transfers	2
5.	30-Day Readmission Rate	2
6.	Unusual Incidents.....	2
7.	Patient-Involved Unusual Incidents.....	3
8.	Selected Types of Incidents	3
9.	Physical Assaults by Severity	3
10.	Patient Injuries	4
11.	Staff Injuries	4
12.	Elopements	4
13.	Reported Medication Variances	5
14.	Reported Adverse Drug Reactions	5
15.	Percent of Missing Documentation on Med-Administration.....	5
16.	Emergency Involuntary Medications Documented in eMar	6
17.	Percent of Patients Restrained or Secluded	6
18.	Restraint Hours Rate & Seclusion Hours Rate	6
<input type="checkbox"/>	Appendix 1) Table – Census, Admissions & Discharges	
<input type="checkbox"/>	Appendix 2) Table – Key Performance Indicators	
<input type="checkbox"/>	Appendix 3) Table – Unusual Incident & Medication	
<input type="checkbox"/>	Appendix 4) Table – Restraint & Seclusion	
<input type="checkbox"/>	Appendix 5) Table – Major Incidents by Incident Location/Unit	
<input type="checkbox"/>	Appendix 6) Table – Demographic Information of Individuals in Care	

10/13/2011

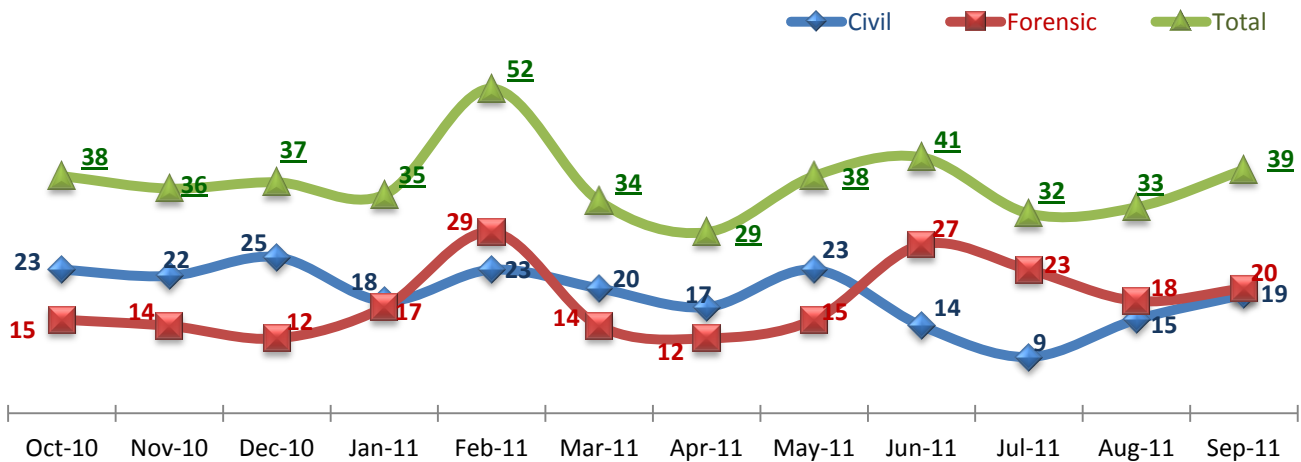
Office of Statistics and Reporting (OSR)

1. Admissions to SEH



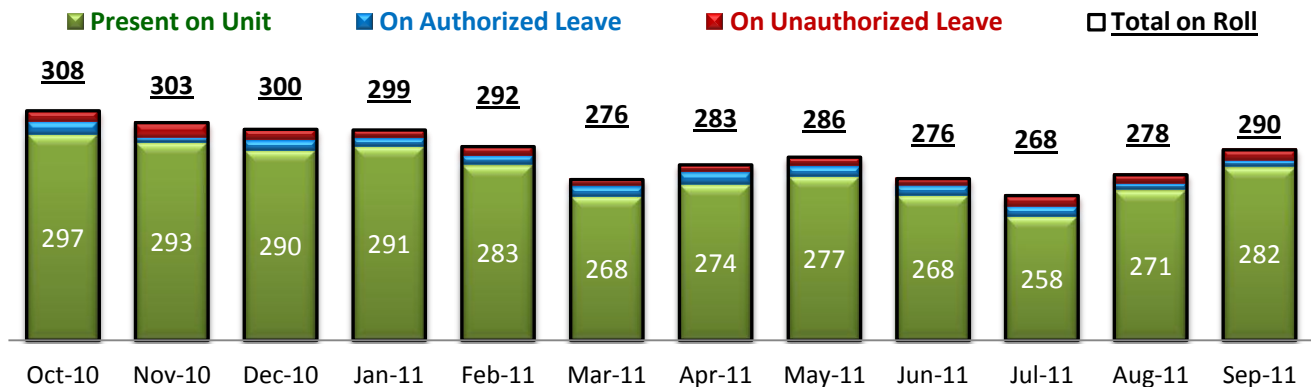
* Number of admissions to SEH inpatient program, including transfers from outpatient to inpatient program.

2. Discharges from SEH



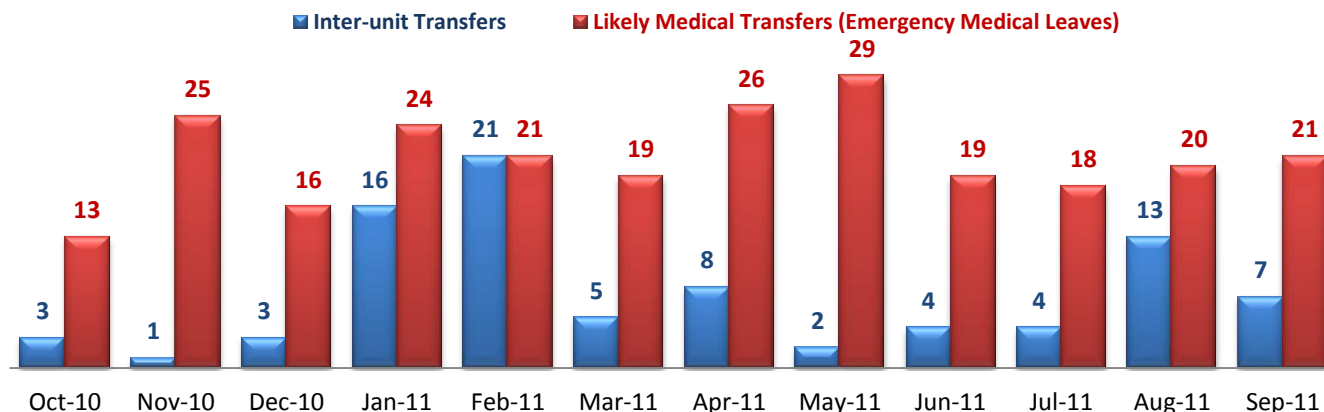
* Number of discharges from SEH inpatient program, including transfers from inpatient to outpatient program.

3. Average Daily Census



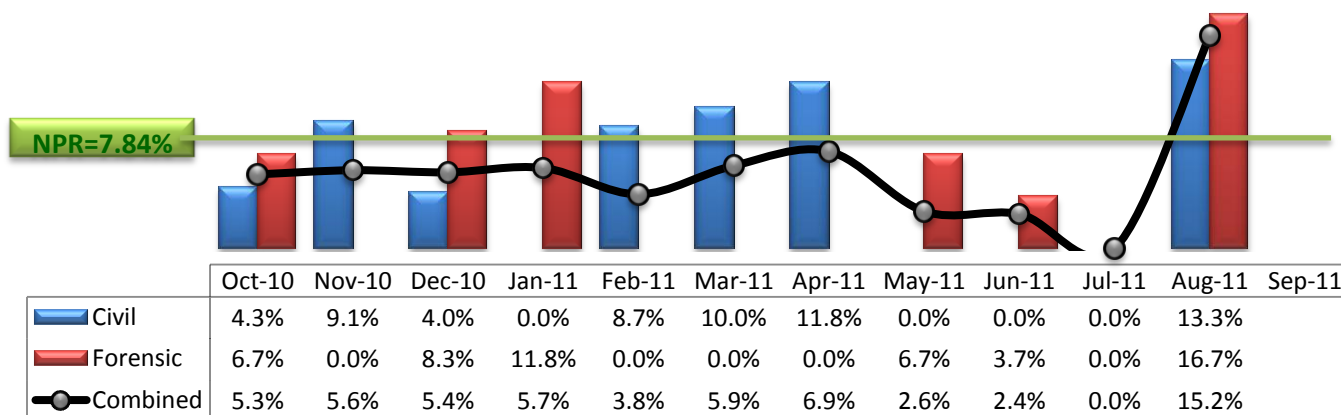
* Data above is the daily average number of individuals counted at 11:59 PM every day during each month.

4. Transfers



* Number of inter-unit transfers that occurred during month and number of emergency medical leaves that were initiated during month.

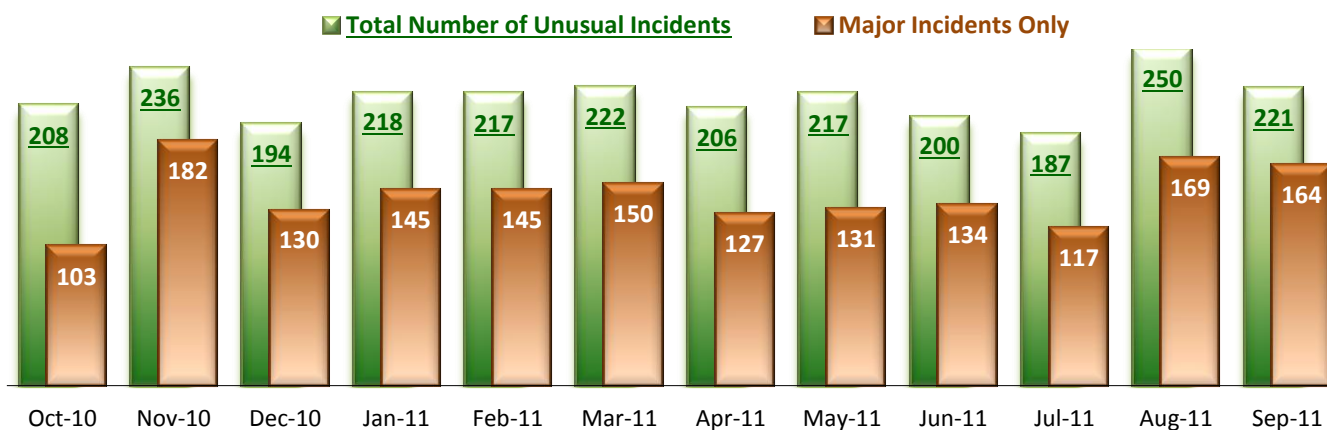
5. 30-Day Readmission Rate



* Percent of discharges that returned to SEH within 30 days of discharges. It does not include those who may have been re-hospitalized to another psychiatric facility. This measure requires 30-day observation following discharge.

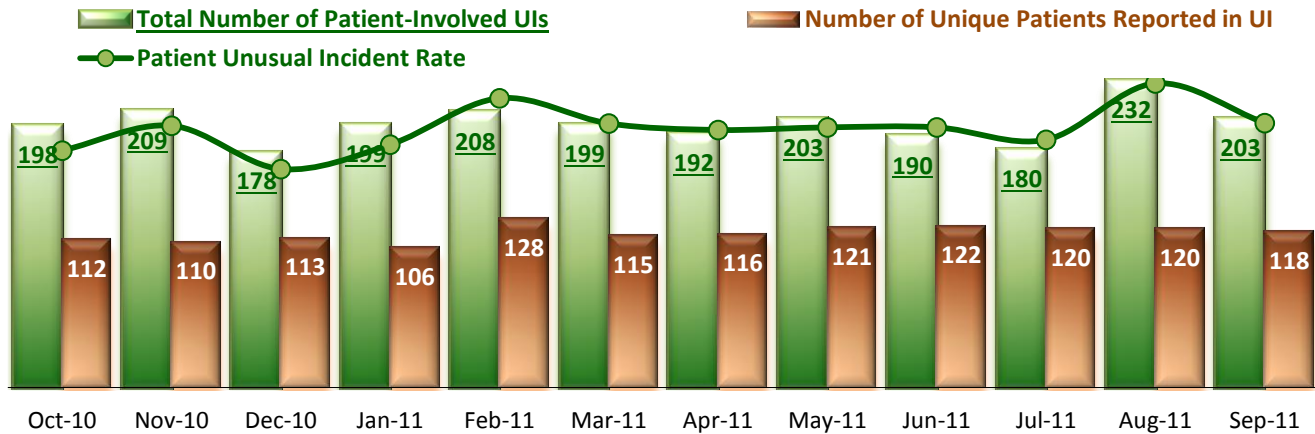
** NPR: National Public Rate as of December 2009 published by NASMHPD Research Institute in May 2010.

6. Unusual Incidents



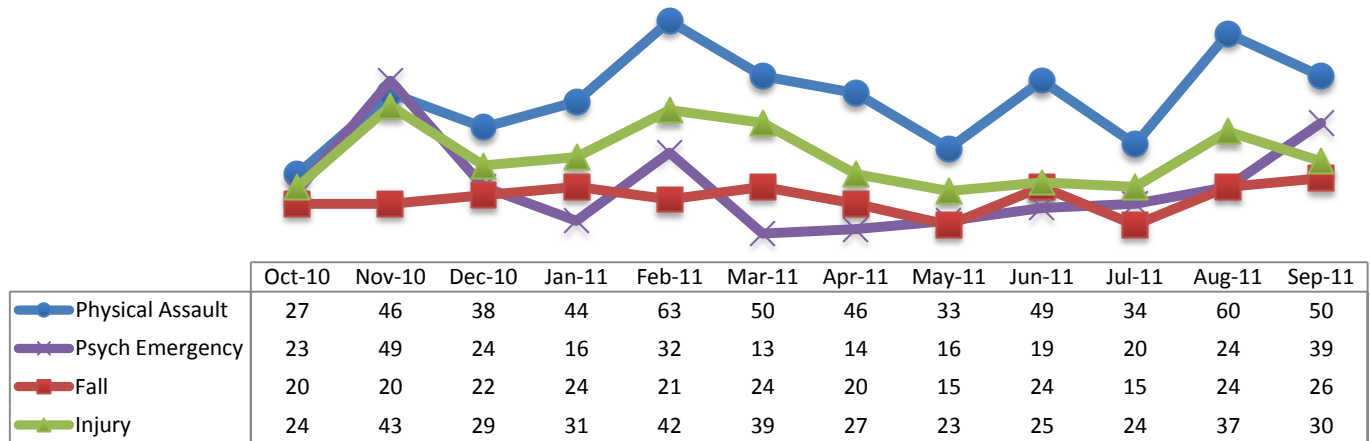
* Numbers above represent all types of the unusual incidents (UIs) that were reported to the Risk Manager by PRISM publication date, including those that did not involve any patients.

7. Patient-Involved Unusual Incidents



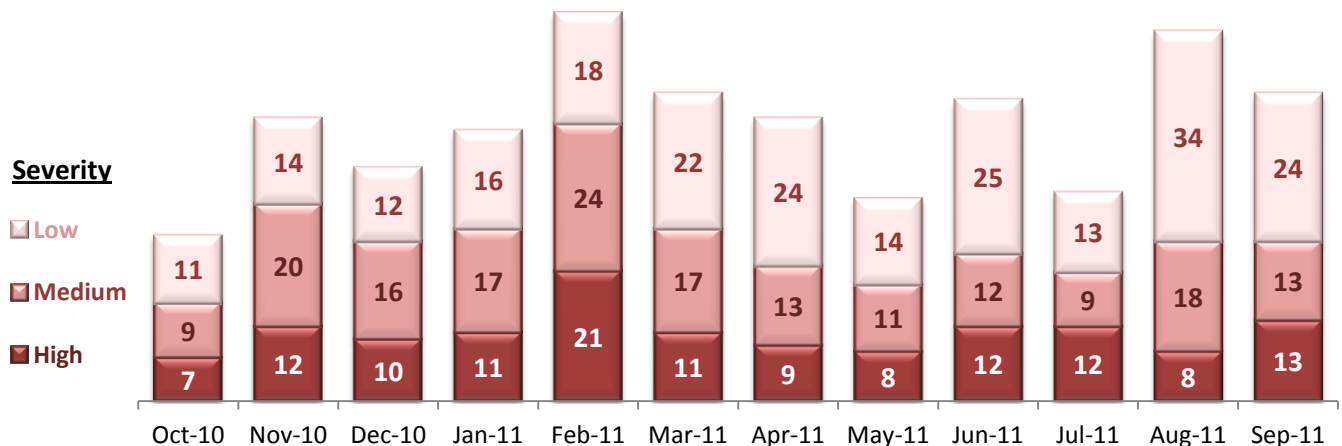
*The total number of patient-involved UIs counts only those incidents that involved at least one or more patients. Some patients may be involved in more than one incident and the number of unique patients does not double count them. The patient UI rate is the number of patient-involved unusual incidents reported for every 1000 inpatient days.

8. Selected Types of Incidents

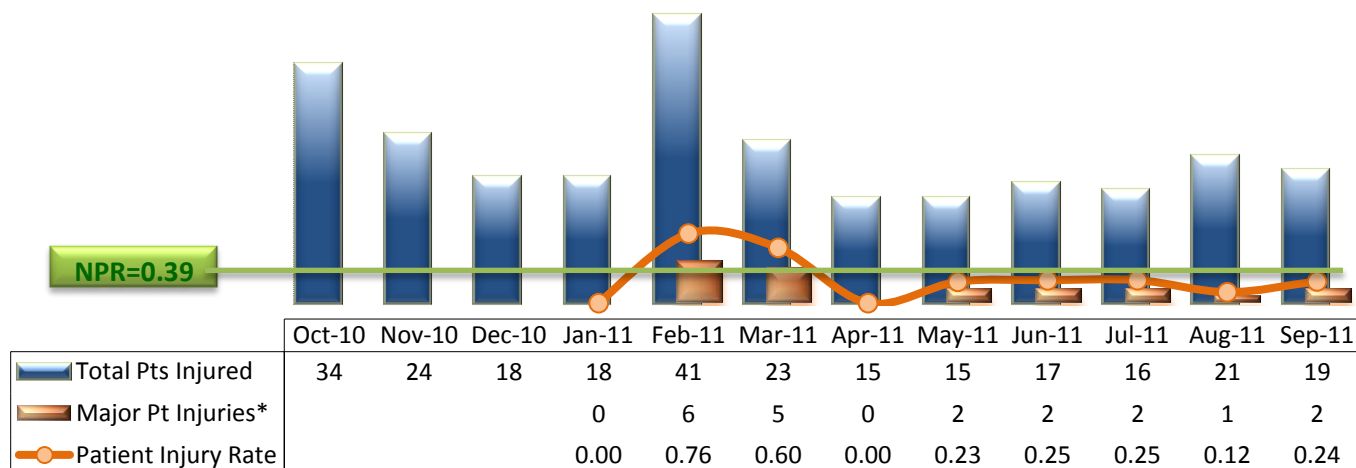


* These are incident types that are frequently reported. Some incidents may be counted in multiple categories. For example, a physical assault incident that accompanied psychiatric emergency and injury is counted under psychiatric emergency and injury as well as under physical assault. Injury is broadly defined to include any type of injuries regardless of the cause or severity level.

9. Physical Assaults by Severity

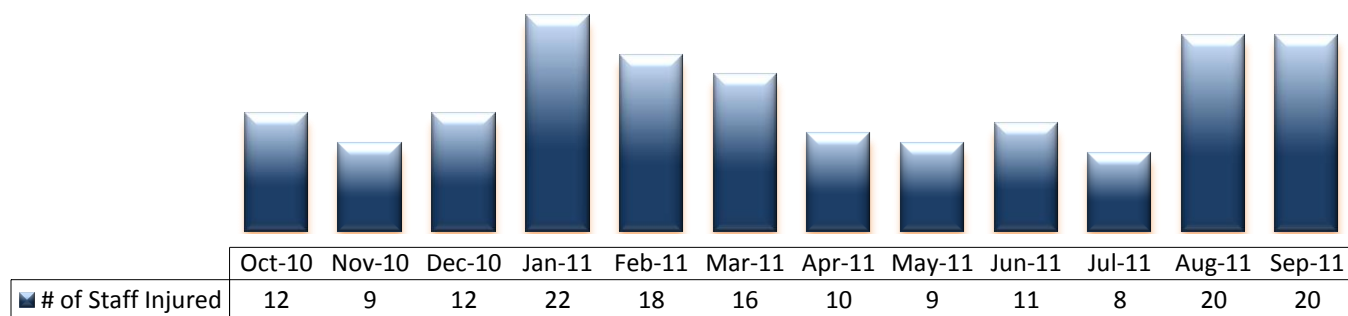


10. Patient Injuries



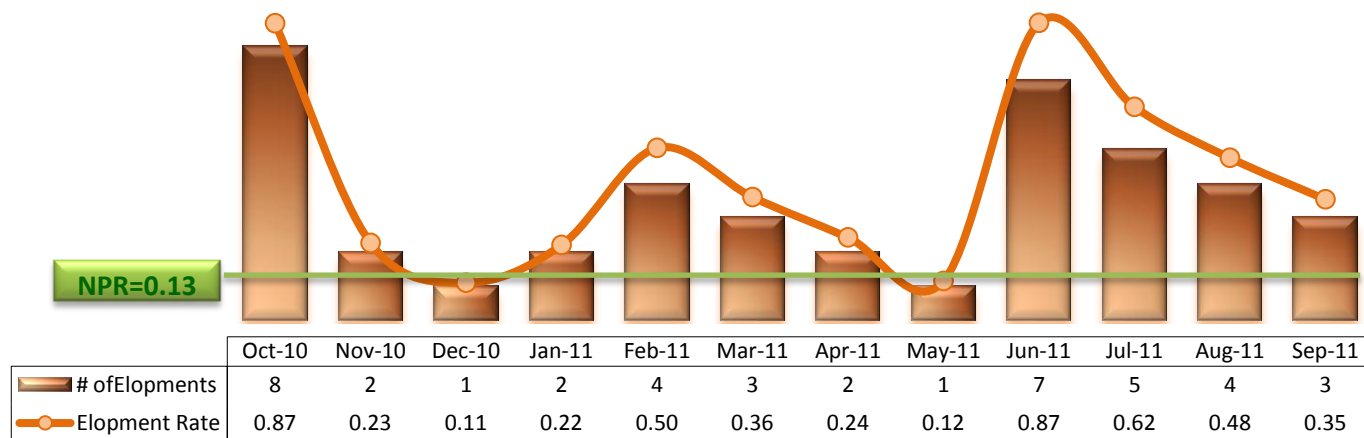
* Injury is broadly defined to include any type of injuries regardless of the cause or severity level. The total number of patients injured represents all of the reported injuries including minor injuries treated with first aid alone. However, the patient injury rate considers only the number of patient injuries that required beyond first-aid level treatment based on the NRI definition and the patient injury rate is the number of 'major' patient injuries per every 1000 inpatient days. The major patient injury data became available in January 2011.

11. Staff Injuries



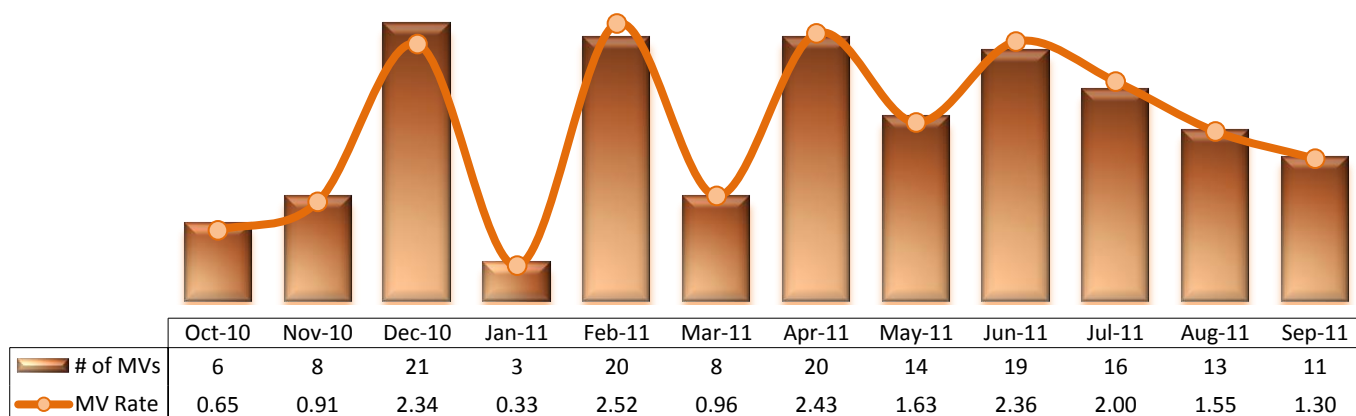
* Injury is broadly defined to include any type of injuries regardless of the cause or severity level. The total number of staff injured represents all of the reported staff injuries including minor injuries treated with first aid alone.

12. Elopements



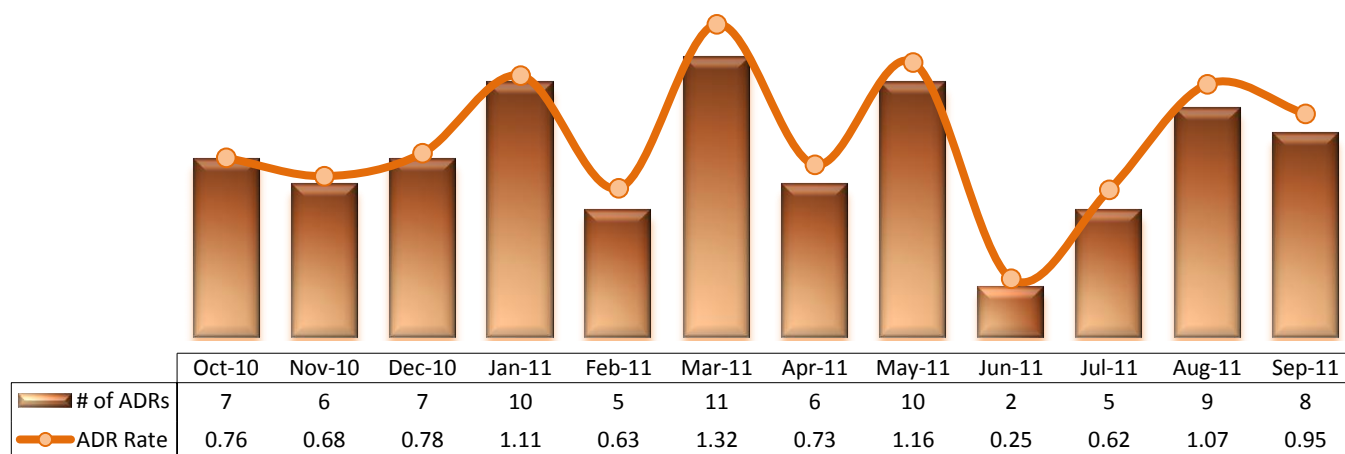
* It counts the total number of unauthorized leaves for any duration that were initiated during month and were recorded in Avatar. The elopement rate is the number of those unauthorized leaves that occurred for every 1000 inpatient days.

13. Reported Medication Variances



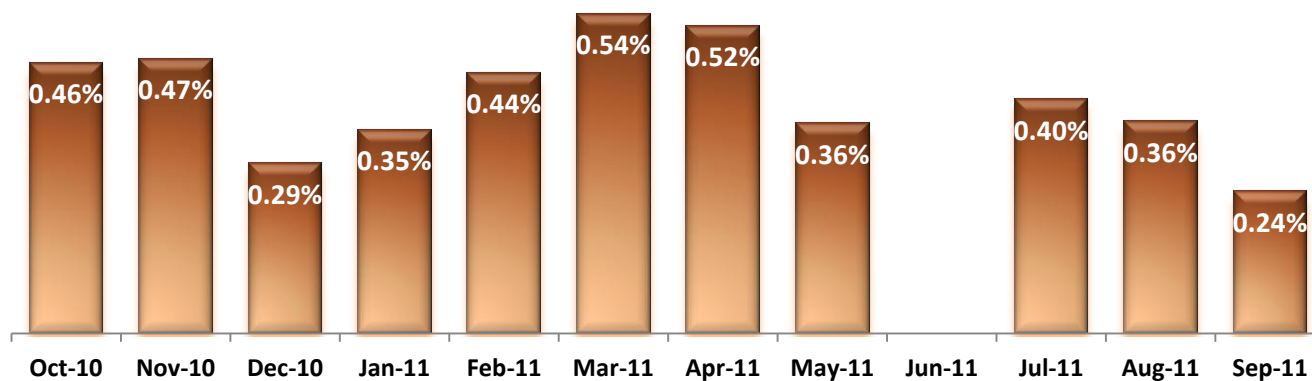
* MV Rate: Number of reported medication variance events that occurred for every 1000 inpatient days.

14. Reported Adverse Drug Reactions



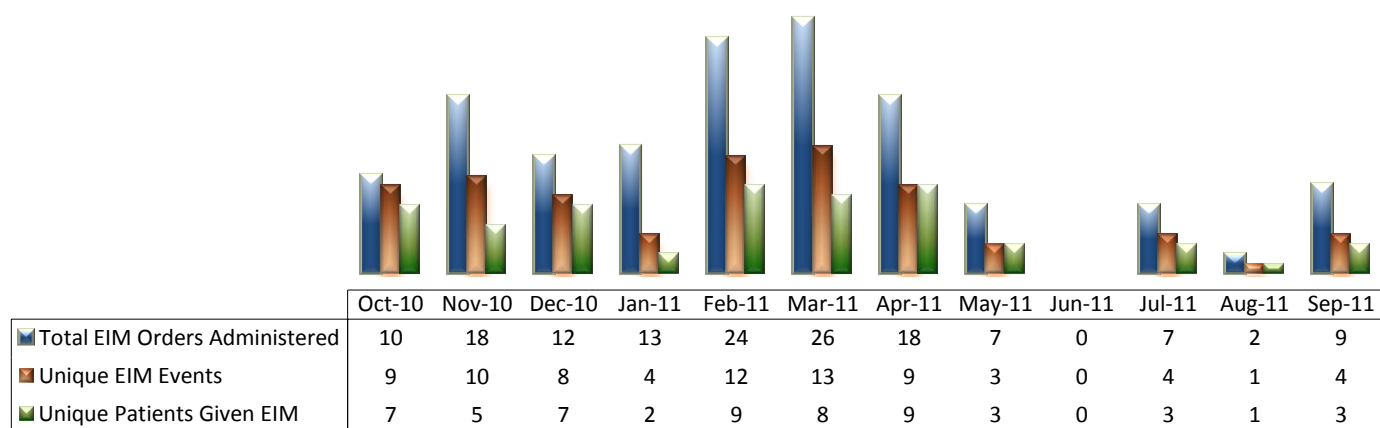
* ADR Rate: Number of reported adverse drug reaction events that occurred for every 1000 inpatient days.

15. Percent of Missing Documentation on Med-Administration



* June-2011 data is not available because of data tracking interruption caused by a technical glitch in Avatar. September-2011 data does not include administration records associated with new orders placed between 9/22/11 and 9/25/11 due to a technical issue that occurred in Avatar and Worx during that time period.

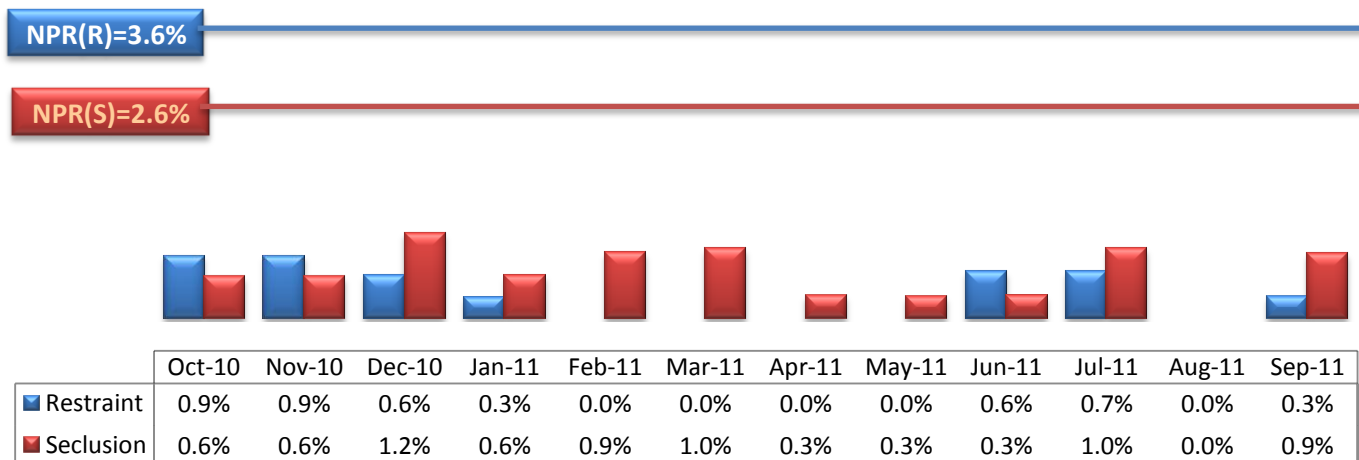
16. Emergency Involuntary Medications Documented in eMar



* Some patients may have experienced multiple EIM events during month and some events may have involved multiples doses of medication ordered and administered.

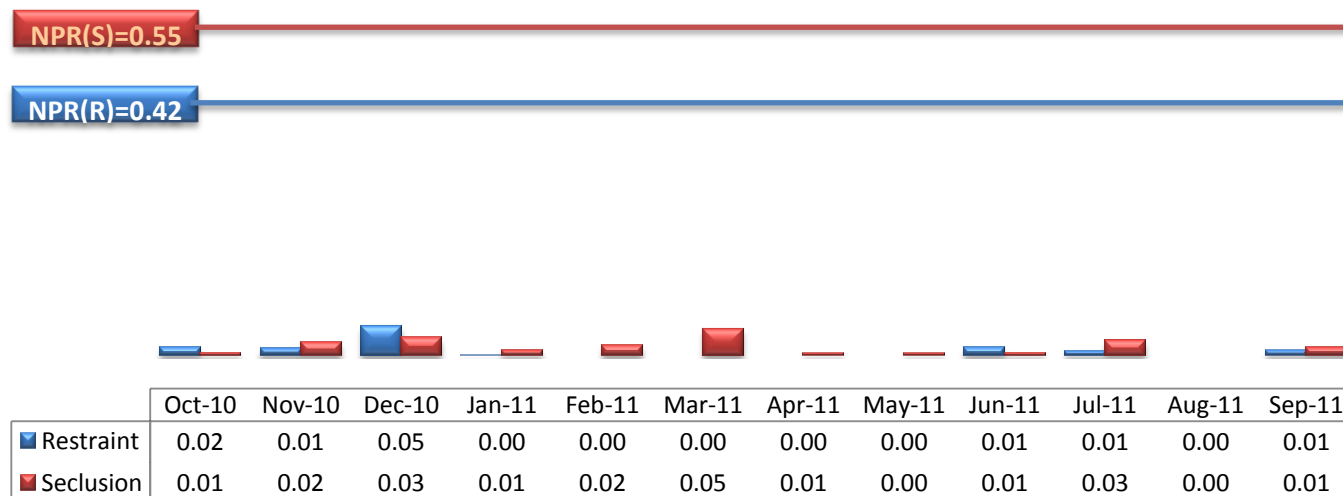
** Unusual incident DB suggests that two EIM events occurred in June 2011 while Avatar eMar recorded none.

17. Percent of Patients Restrained or Secluded



* Percent of unique patients who were restrained at least once and percent of unique patients who were secluded at least once.

18. Restraint Hours Rate & Seclusion Hours Rate



* Restraint/Seclusion Hours Rate: Number of hours spent in restraint/seclusion for every 1000 inpatient hours.

Performance Related Information for Staff & Managers

1. Census, Admissions, Discharges & Transfers

Data Source: Avatar

Updated as of 10/11/11

Category		Oct-10	Nov-10	Dec-10	Jan-11	Feb-11	Mar-11	Apr-11	May-11	Jun-11	Jul-11	Aug-11	Sep-11	Monthly Average	Total (12mths)	Figure
Admissions	Civil	13	17	16	11	12	20	16	18	8	11	14	16	14	172	Figure 1
	Forensic	21	15	19	22	17	17	22	19	17	24	31	29	21	253	
	Total	34	32	35	33	29	37	38	37	25	35	45	45	35	425	
Discharges	Civil	23	22	25	18	23	20	17	23	14	9	15	19	19	228	Figure 2
	Forensic	15	14	12	17	29	14	12	15	27	23	18	20	18	216	
	Total	38	36	37	35	52	34	29	38	41	32	33	39	37	444	
Net Gain During Month	Civil	-10	-5	-9	-7	-11	0	-1	-5	-6	2	-1	-3		-56	
	Forensic	6	1	7	5	-12	3	10	4	-10	1	13	9		37	
	Total	-4	-4	-2	-2	-23	3	9	-1	-16	3	12	6		-19	
All Individuals on Roll at End of Month		307	303	301	299	276	279	288	287	271	274	286	292	289		
a. Present on Unit		295	292	289	290	269	275	280	277	261	263	280	281	279		
b. On AL		7	6	7	6	3	1	5	6	5	7	1	6	5		
c. On UL		5	5	5	3	4	3	3	4	5	4	5	5	4		
All Individuals on Roll: Daily Average during Month		308	303	300	299	292	276	283	286	276	268	278	290	288		Figure 3
a. Present on Unit*		297	293	290	291	283	268	274	277	268	258	271	282	279		
b. On AL		6	3	5	4	4	5	6	5	5	5	3	3	4		
c. On UL		5	7	5	4	4	3	3	4	3	5	4	5	4		
Patient Days*		9213	8799	8983	9031	7925	8307	8217	8601	8050	8008	8407	8461	8500	102002	
Inter-Unit Transfers during Month		3	1	3	16	21	5	8	2	4	4	13	7	7	87	Figure 4
Medical Leaves Initiated during Month	Emergency	13	25	16	24	21	19	26	29	19	18	20	21	21	251	
	Non-Emer	12	20	23	26	21	21	35	15	5	12	15	12	18	217	
	Total	25	45	39	50	42	40	61	44	24	30	35	33	39	468	
Non-Medical Leaves Initiated during Month		102	81	93	91	111	67	60	56	45	63	63	53	74	885	
UL Initiated during Month		8	2	1	2	4	3	2	1	7	5	4	3	4	42	
Total Unique Patients Served during Month		343	343	334	334	325	308	311	324	308	305	319	331	324		
30 Day Readmission **	Civil	1	2	1	0	2	2	2	0	0	0	2		1	12	
	Forensic	1	0	1	2	0	0	0	1	1	0	3		1	9	
	Total	2	2	2	2	2	2	2	1	1	0	5		2	21	

* Counts the number of patients who are present on the unit and excludes those on authorized or unauthorized leave at 11:59pm on a given day.

** Number of patients returning within 30 days of discharges that occurred during month.

Performance Related Information for Staff & Managers

2. Key Performance Indicators

Data Source: UI DB, ADR DB, Restraint/Seclusion Log, and Avatar

Updated as of 10/11/11

Category	Oct-10	Nov-10	Dec-10	Jan-11	Feb-11	Mar-11	Apr-11	May-11	Jun-11	Jul-11	Aug-11	Sep-11	Monthly Average	NPR* (Dec-09)	Figure
30 Day Readmit (Discharge Cohort)**	Civil	4.3%	9.1%	4.0%	0.0%	8.7%	10.0%	11.8%	0.0%	0.0%	0.0%	13.3%		5.7%	Figure 5
	Forensic	6.7%	0.0%	8.3%	11.8%	0.0%	0.0%	0.0%	6.7%	3.7%	0.0%	16.7%		4.5%	
	Combined	5.3%	5.6%	5.4%	5.7%	3.8%	5.9%	6.9%	2.6%	2.4%	0.0%	15.2%		5.2%	
Number of Unusual Incidents		208	236	194	218	217	222	206	217	200	187	250	221	215	Figure 6
Patient Unusual Incident Rate		21.49	23.75	19.82	22.04	26.25	23.96	23.37	23.60	23.60	22.48	27.60	23.99	23.44	Figure 7
Selected Types of Incidents	Physical Assault	27	46	38	44	63	50	46	33	49	34	60	50	45	Figure 8
	Psych Emergency	23	49	24	16	32	13	14	16	19	20	24	39	24	
	Fall	20	20	22	24	21	24	20	15	24	15	24	26	21	
	Injury***	24	43	29	31	42	39	27	23	25	24	37	30	31	
Physical Assaults by Severity	High	7	12	10	11	21	11	9	8	12	12	8	13	10	Figure 9
	Medium	9	20	16	17	24	17	13	11	12	9	18	13	13	
	Low	11	14	12	16	18	22	24	14	25	13	34	24	22	
Patient Injury Rate***				0.00	0.76	0.60	0.00	0.23	0.25	0.25	0.12	0.24	0.26	0.39	Figure 10
Patients with Major Injuries***				0	6	5	0	2	2	2	1	2	2		
Total Patients Injured***		34	24	18	18	41	23	15	15	17	16	21	19	22	
Total Staff Injured***		12	9	12	22	18	16	10	9	11	8	20	20	14	Figure 11
Elopement Rate		0.87	0.23	0.11	0.22	0.50	0.36	0.24	0.12	0.87	0.62	0.48	0.35	0.51	Figure 12
Medication Variance Rate		0.65	0.91	2.34	0.33	2.52	0.96	2.43	1.63	2.36	2.00	1.55	1.30	1.56	Figure 13
Adverse Drug Reaction Rate		0.76	0.68	0.78	1.11	0.63	1.32	0.73	1.16	0.25	0.62	1.07	0.95	0.84	Figure 14
Missing Med-Admin Documentation		0.46%	0.47%	0.29%	0.35%	0.44%	0.54%	0.52%	0.36%		0.40%	0.36%	0.24%	0.40%	Figure 15
Emergency Involuntary Meds			18	12	13	24	26	18	7	0	7	2	9	12	Figure 16
Unique EIM Events			10	8	4	12	13	9	3	0	4	1	4	6	
Unique Patients given EIM			5	7	2	9	8	9	3	0	3	1	3	5	
Percent of Patients Restrained		0.9%	0.9%	0.6%	0.3%	0.0%	0.0%	0.0%	0.0%	0.6%	0.7%	0.0%	0.3%	0.4%	Figure 17
Percent of Patients Secluded		0.6%	0.6%	1.2%	0.6%	0.9%	1.0%	0.3%	0.3%	0.3%	1.0%	0.0%	0.9%	0.6%	
Restraint Hours Rate		0.02	0.01	0.05	0.00	0.00	0.00	0.00	0.00	0.01	0.01	0.00	0.01	0.01	Figure 18
Seclusion Hours Rate		0.01	0.02	0.03	0.01	0.02	0.05	0.01	0.00	0.01	0.03	0.00	0.01	0.02	

* National Public Rate, NASMHPD Research Institute

** Percentage of patients returning within 30 days of discharges that occurred during month

*** Injury is broadly defined to include any type of injuries regardless of the cause or severity level. The total number of patients or staff injured represents all of the reported injuries including minor injuries treated with first aid alone. However, the patient injury rate considers only the number of patient injuries that required beyond first-aid level treatment based on the NRI definition and the patient injury rate is the number of 'major' patient injuries per every 1000 inpatient days. The patient major injury data became available in January 2011.

Performance Related Information for Staff & Managers

3. Unusual Incident & Medication

Data Source: UI DB, ADR DB, and Avatar

Updated as of 10/11/11

Data Source: Cerner PowerChart and Meditech														Updated as of: 11/24/2011		
Category		Oct-10	Nov-10	Dec-10	Jan-11	Feb-11	Mar-11	Apr-11	May-11	Jun-11	Jul-11	Aug-11	Sep-11	Monthly Average	Total (12mths)	NPR* (Dec-09)
Total Unusual Incidents**		208	236	194	218	217	222	206	217	200	187	250	221	215	2576	
Total Major Unusual Incidents		103	182	130	145	145	150	127	131	134	117	169	164	141	1697	
Patient Involved UI Only**		198	209	178	199	208	199	192	203	190	180	232	203	199	2391	
Patient UI Rate		21.49	23.75	19.82	22.04	26.25	23.96	23.37	23.60	23.60	22.48	27.60	23.99	23.44		
Unique Patients Involved in UI**		112	110	113	106	128	115	116	121	122	120	120	118	117	1401	
Selected Types of Incidents	Physical Assault	27	46	38	44	63	50	46	33	49	34	60	50	45	540	
	Psych Emergency	23	49	24	16	32	13	14	16	19	20	24	39	24	289	
	Fall	20	20	22	24	21	24	20	15	24	15	24	26	21	255	
	Injury	24	43	29	31	42	39	27	23	25	24	37	30	31	374	
Physical Assaults by Severity	High	7	12	10	11	21	11	9	8	12	12	8	13	10		
	Medium	9	20	16	17	24	17	13	11	12	9	18	13	13		
	Low	11	14	12	16	18	22	24	14	25	13	34	24	22		
Total Patients Injured***		34	24	18	18	41	23	15	15	17	16	21	19	22	261	
Patients with Major Injuries***					0	6	5	0	2	2	2	1	2	2	20	
Patient Injury Rate***					0.00	0.76	0.60	0.00	0.23	0.25	0.25	0.12	0.24	0.26		0.39
Total Staff Injured**		12	9	12	22	18	16	10	9	11	8	20	20	14		
Total UL Incident Reports		8	6	1	4	3	4	3	7	4	5	3	4	4	52	
Total ULs Documented in Avatar		8	2	1	2	4	3	2	1	7	5	4	3	4		
Elopement Rate		0.87	0.23	0.11	0.22	0.50	0.36	0.24	0.12	0.87	0.62	0.48	0.35	0.51		0.13
Total Medication Variance (MV) Incidents Reported **		6	8	21	3	20	8	20	14	19	16	13	11	13	159	
MV Rate		0.65	0.91	2.34	0.33	2.52	0.96	2.43	1.63	2.36	2.00	1.55	1.30	1.56		
Total Adverse Drug Reactions (ADR) Reported		7	6	7	10	5	11	6	10	2	5	9	8	7	86	
ADR Rate		0.76	0.68	0.78	1.11	0.63	1.32	0.73	1.16	0.25	0.62	1.07	0.95	0.84		
Total Routine Medication Administrations Scheduled		111397	104863	107095	105329	93288	99376	97031	101053		96167	96945	95639		1108183	
Total Missing Documentations		512	490	309	365	413	540	507	361		383	349	231		4460	
Percent of Missing Documentation		0.46%	0.47%	0.29%	0.35%	0.44%	0.54%	0.52%	0.36%		0.40%	0.36%	0.24%		0.40%	
Total Patients with >=3 STATs		31	29	25	44	53	33	53	30	18	17	20	24	31		
Emergency STAT Med Orders Administered Involuntarily (EIM)		10	18	12	13	24	26	18	7	0	7	2	9	12		
Unique EIM Events		9	10	8	4	12	13	9	3	0	4	1	4	6		
Unique Patients given EIM		7	5	7	2	9	8	9	3	0	3	1	3	5		

* National Public Rate, NASMHPD Research Institute

** Numbers may change if any additional UI report is made after the data run date from UI database (around the 15th of the following month).

*** Avatar report that indicates the number of patients with 3 or more STATs was unavailable at report run time

Performance Related Information for Staff & Managers

4. Restraint & Seclusion

Data Source: Restraint/Seclusion Log and UI DB (for # of total events and patients) and Avatar (for patient days/hours)

Updated as of 10/11/11

Category	Oct-10	Nov-10	Dec-10	Jan-11	Feb-11	Mar-11	Apr-11	May-11	Jun-11	Jul-11	Aug-11	Sep-11	Monthly Average	Total (12mths)	NPR* (Dec-09)
Number of Restraint Events	3	4	8	1	0	0	0	0	2	2	0	1	1.8	21	
Number of Unique Patients Restrained	3	3	2	1	0	0	0	0	2	2	0	1	1.2		
Percentage of Patients Restrained	0.9%	0.9%	0.6%	0.3%	0.0%	0.0%	0.0%	0.0%	0.6%	0.7%	0.0%	0.3%	0.4%		3.6%
Total Restraint Hours (h:mm)	3:20	2:46	11:08	0:20	0:00	0:00	0:00	0:00	2:50	1:45	0:00	2:00	2:00	24:09	
Restraint Hours Rate	0.02	0.01	0.05	0.00	0.00	0.00	0.00	0.00	0.01	0.01	0.00	0.01	0.01		0.42
Number of Seclusion Events	2	2	2	3	3	6	1	1	1	3	0	4	2.3	28	
Number of Unique Patients Secluded	2	2	4	2	3	3	1	1	1	3	0	3	2.1		
Percentage of Patients Secluded	0.6%	0.6%	1.2%	0.6%	0.9%	1.0%	0.3%	0.3%	0.3%	1.0%	0.0%	0.9%	0.6%		2.6%
Total Seclusion Hours (h:mm)	1:20	4:57	6:40	2:10	3:25	9:15	1:00	1:00	1:11	5:10	0:00	3:00	3:15	39:08	
Seclusion Hours Rate	0.01	0.02	0.03	0.01	0.02	0.05	0.01	0.00	0.01	0.03	0.00	0.01	0.02		0.55

* National Public Rate, NASMHPD Research Institute

Performance Related Information for Staff & Managers

5. Major Incidents by Incident Location/Unit

Data Source: UI DB

Updated as of 10/11/11

Category		Oct-10	Nov-10	Dec-10	Jan-11	Feb-11	Mar-11	Apr-11	May-11	Jun-11	Jul-11	Aug-11	Sep-11	Monthly Average	Total (11mths)	Percent
Total Unusual Incidents		208	236	194	218	217	222	206	217	200	187	250	221	215	2576	
Total Major Incidents*		103	182	130	145	145	150	127	131	134	117	169	164	141	1697	100%
Major Incident Location	1A	11	12	10	11	5	11	13	17	7	9	18	16	12	140	8%
	1B	13	12	6	6	9	12	7	24	16	18	19	24	14	166	10%
	1C	7	5	14	9	14	9	10	3	12	4	10	8	9	105	6%
	1D	11	42	32	9	10	14	13	11	10	6	4	14	15	176	10%
	1E	7	12	9	16	33	21	21	22	15	21	22	28	19	227	13%
	1F	9	13	12	14	20	9	8	11	11	8	3	19	11	137	8%
	1G	5	12	9	11	9	13	15	4	6	10	22	15	11	131	8%
	2A	3	4	4	6	3	4	2	3	3	0	5	3	3	40	2%
	2B	4	6	2	4	0	2	3	1	0	2	1	2	2	27	2%
	2C	6	12	11	16	14	17	7	11	11	6	7	2	10	120	7%
	2D	9	22	5	10	12	7	7	6	10	11	22	9	11	130	8%
	ANXA/B	2	4	0	5	0	-	-	-	-	-	-	-	2	11	1%
	TLC	7	10	3	12	9	17	11	7	19	11	16	10	11	132	8%
	Other	9	16	13	16	7	14	10	11	14	11	20	14	13	155	9%
Total Physical Assault Incidents		27	46	38	44	63	50	46	33	49	34	60	50	45	540	100%
Assault Incident Location	1A	1	5	2	4	1	1	3	3	1	4	5	6	3	36	7%
	1B	2	0	0	0	1	2	1	3	2	3	6	0	2	20	4%
	1C	4	2	6	4	4	2	3	0	6	1	2	2	3	36	7%
	1D	1	8	7	6	6	11	8	5	6	2	0	5	5	65	12%
	1E	1	5	2	4	17	8	13	8	5	9	10	11	8	93	17%
	1F	6	4	4	6	13	3	3	4	4	1	2	6	5	56	10%
	1G	1	7	4	6	8	7	5	0	3	4	8	9	5	62	11%
	2A	0	1	2	0	0	1	0	1	0	0	0	0	0	5	1%
	2B	0	2	1	0	0	0	0	1	0	1	0	1	1	6	1%
	2C	1	0	3	5	3	3	0	3	8	1	4	1	3	32	6%
	2D	5	10	4	5	5	4	3	1	4	6	10	4	5	61	11%
	ANXA/B	1	1	0	0	0	-	-	-	-	-	-	-	0	2	0%
	TLC	3	1	3	3	3	7	5	4	5	2	9	3	4	48	9%
	Other	1	0	0	1	2	1	2	0	5	0	4	2	2	18	3%

Performance Related Information for Staff & Managers

5. Major Incidents by Incident Location/Unit

Data Source: UI DB

Updated as of 10/11/11

Category		Oct-10	Nov-10	Dec-10	Jan-11	Feb-11	Mar-11	Apr-11	May-11	Jun-11	Jul-11	Aug-11	Sep-11	Monthly Average	Total (11mths)	Percent
Total Fall Incidents		20	20	22	24	21	24	20	15	24	15	24	26	21	255	100%
Fall Incident Location	1A	7	5	3	5	2	7	5	1	5	5	4	5	5	54	21%
	1B	5	3	2	3	2	1	2	1	3	5	4	13	4	44	17%
	1C	0	1	5	0	2	2	1	1	0	0	3	0	1	15	6%
	1D	1	0	3	1	1	0	2	2	2	2	0	1	1	15	6%
	1E	1	0	1	3	3	0	0	3	0	0	2	1	1	14	5%
	1F	0	1	0	0	0	1	0	1	0	0	0	2	0	5	2%
	1G	0	0	1	1	0	2	0	0	0	0	0	1	0	5	2%
	2A	1	0	1	1	1	1	1	0	0	0	1	0	1	7	3%
	2B	2	0	0	0	0	0	1	0	0	0	1	0	0	4	2%
	2C	2	4	2	2	4	3	2	2	1	0	0	0	2	22	9%
	2D	1	4	0	1	1	0	2	0	2	1	5	1	2	18	7%
	ANXA/B	0	0	0	0	0	-	-	-	-	-	-	-	0	0	0%
	TLC	0	1	0	3	4	4	3	2	9	2	3	0	3	31	12%
	Other	0	1	4	4	1	3	1	2	2	0	1	2	2	21	8%
Total Injury Incidents		24	43	29	31	42	39	27	23	25	24	37	30	31	374	100%
Injury Incident Location	1A	3	5	2	2	0	3	3	2	1	4	6	1	3	32	9%
	1B	3	2	0	2	3	4	2	6	1	3	2	4	3	32	9%
	1C	3	2	3	2	0	1	2	1	1	1	3	0	2	19	5%
	1D	0	12	8	1	2	6	3	2	4	2	0	3	4	43	11%
	1E	1	3	2	2	8	3	2	5	3	2	6	6	4	43	11%
	1F	2	6	3	3	10	3	1	3	3	1	0	4	3	39	10%
	1G	0	3	2	3	5	5	4	0	0	0	5	3	3	30	8%
	2A	0	0	3	1	0	1	0	0	0	0	0	0	0	5	1%
	2B	1	2	0	1	0	0	0	0	0	1	1	0	1	6	2%
	2C	3	1	0	3	3	6	1	0	1	3	4	1	2	26	7%
	2D	3	4	2	1	6	1	2	1	2	2	2	4	3	30	8%
	ANXA/B	1	0	0	0	0	-	-	-	-	-	-	-	0	1	0%
	TLC	2	0	2	3	2	5	6	1	5	4	2	1	3	33	9%
	Other	2	3	2	7	3	1	1	2	4	1	6	3	3	35	9%

* Not every incident is a major incident. This counts only those major incidents that required extensive investigations from the risk manager.

- Annex A/B Closed in February 2011. All patients were transferred to other units.

Performance Related Information for Staff & Managers

6. Demographic Information of Individuals in Care

Data Source: Avatar

Updated as of 10/11/11

Category	Sub-group	Oct-10	Nov-10	Dec-10	Jan-11	Feb-11	Mar-11	Apr-11	May-11	Jun-11	Jul-11	Aug-11	Sep-11	Monthly Average	Percent*
Total Active (on Roll) at End of Month*		307	303	301	299	276	279	288	287	271	274	286	292	289	
Gender	Female	80	75	74	71	66	67	69	72	59	58	68	70	69	23.9%
	Male	227	228	227	228	210	212	219	215	212	216	218	222	220	76.1%
Age	Median Age (Years)	55 yrs	55 yrs	55 yrs	54 yrs	55 yrs	55 yrs	55 yrs	55 yrs	55 yrs	55 yrs	54 yrs	55 yrs	55 yrs	
	<30 years old	18	14	15	14	16	15	19	20	18	18	18	25	18	6.1%
	>=30 and <40 years old	22	24	30	31	23	27	29	30	23	24	27	21	26	9.0%
	>=40 and <50 years old	64	62	56	58	47	49	47	47	45	48	53	53	52	18.2%
	>=50 and <60 years old	120	119	118	114	114	108	113	111	107	105	108	107	112	38.8%
	>=60 years old	83	84	82	82	76	80	80	79	78	79	80	86	81	28.0%
Legal Status of Individuals on Roll at End of Month	Emergency			26	19	19	21	22	15	14	18	20	16	19	6.6%
	Inpatient Commitment			33	35	32	31	30	30	33	32	32	31	32	11.1%
	Outpatient Commitment			30	32	29	29	28	30	26	25	26	28	28	9.8%
	Non-Protesting			1	1	1	1	1	1	1	1	1	0	1	0.3%
	Voluntary			46	43	41	40	41	41	40	41	38	41	41	14.3%
	Civil Sub-total			136	130	122	122	122	117	114	117	117	116	121	42.0%
	DC Exam			51	55	42	41	49	51	38	44	54	62	49	16.9%
	Mentally Incompetent			3	3	2	2	4	4	3	3	4	3	3	1.1%
	NGBRI - DC			94	94	93	98	96	96	98	93	95	94	95	33.0%
	NGBRI - US			10	10	10	9	10	12	12	12	11	12	11	3.7%
	NGBIR - VI			2	2	2	2	2	2	2	1	1	1	2	0.6%
	Dual Commitment			1	1	1	1	1	1	1	1	1	1	1	0.3%
	Sexual Psychopath (Miller Act)			4	4	4	4	4	4	3	3	3	3	4	1.2%
	Forensic Sub-total			165	169	154	157	166	170	157	157	169	176	164	56.8%
Length of Stay	Median LOS (Days)			903 d	934 d	1091 d	994 d	923 d	949 d	1073 d	1043 d	856 d	832 d	960 d	
	Average LOS (Days)			3099 d	3133 d	3282 d	3192 d	3069 d	3093 d	3261 d	3194 d	3033 d	2958 d	3131 d	
	<30 Days			27	32	30	33	34	30	22	33	39	40	32	11.1%
	>=30 ~ <365 Days			79	74	60	62	68	72	69	61	68	73	69	23.8%
	>= 1 Year & < 2 Years			30	29	27	28	32	29	25	27	25	24	28	9.6%
	>= 2 Years & < 5 Years			48	47	45	44	40	43	43	43	45	46	44	15.4%
	>= 5 Years & < 20 Years			66	66	63	64	67	65	64	63	62	61	64	22.2%
	>= 20 Years			51	51	51	48	47	48	48	47	47	48	49	16.8%

* Counts the total number of individuals who are on the hospital roll at end of each month. This number serves as denominator to calculate percentage of each group.