

**Government of the District of Columbia
Department of Mental Health (DMH)**

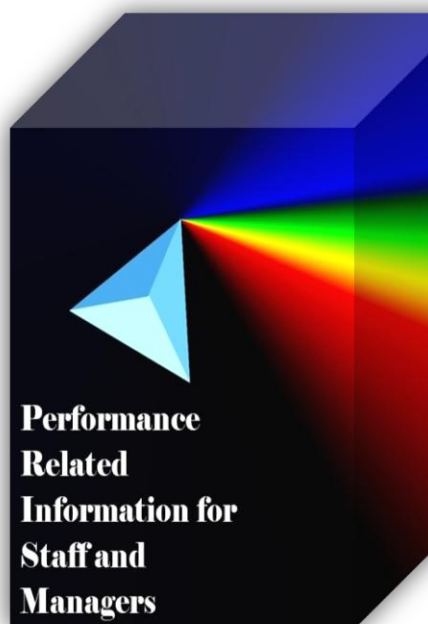


Performance Related Information for Staff and Managers

PRISM

AUGUST 2011

Table of Contents

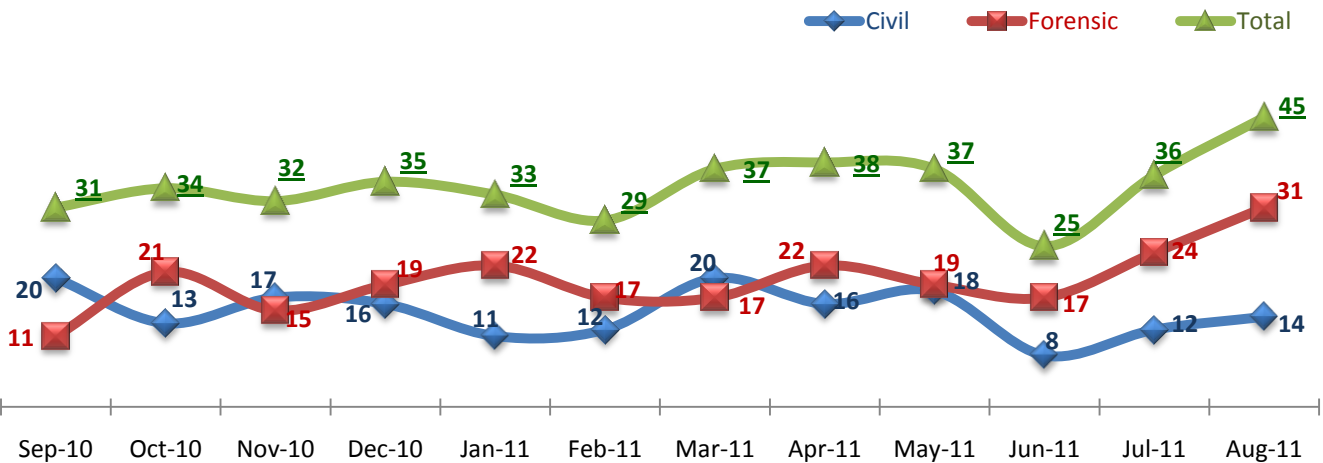


1.	Admissions to SEH	1
2.	Discharges from SEH.....	1
3.	Average Daily Census	1
4.	Transfers	2
5.	30-Day Readmission Rate	2
6.	Unusual Incidents.....	2
7.	Patient-Involved Unusual Incidents.....	3
8.	Selected Types of Incidents	3
9.	Physical Assaults by Severity	3
10.	Patient Injuries	4
11.	Staff Injuries	4
12.	Eloperments	4
13.	Reported Medication Variances	5
14.	Reported Adverse Drug Reactions	5
15.	Percent of Missing Documentation on Med-Administration.....	5
16.	Emergency Involuntary Medications Documented in eMar	6
17.	Percent of Patients Restrained or Secluded.....	6
18.	Restraint Hours Rate & Seclusion Hours Rate	6
	<input type="checkbox"/> Appendix 1) Table – Census, Admissions & Discharges	
	<input type="checkbox"/> Appendix 2) Table – Key Performance Indicators	
	<input type="checkbox"/> Appendix 3) Table – Unusual Incident & Medication	
	<input type="checkbox"/> Appendix 4) Table – Restraint & Seclusion	
	<input type="checkbox"/> Appendix 5) Table – Major Incidents by Incident Location/Unit	
	<input type="checkbox"/> Appendix 6) Table – Demographic Information of Individuals in Care	

09/13/2011

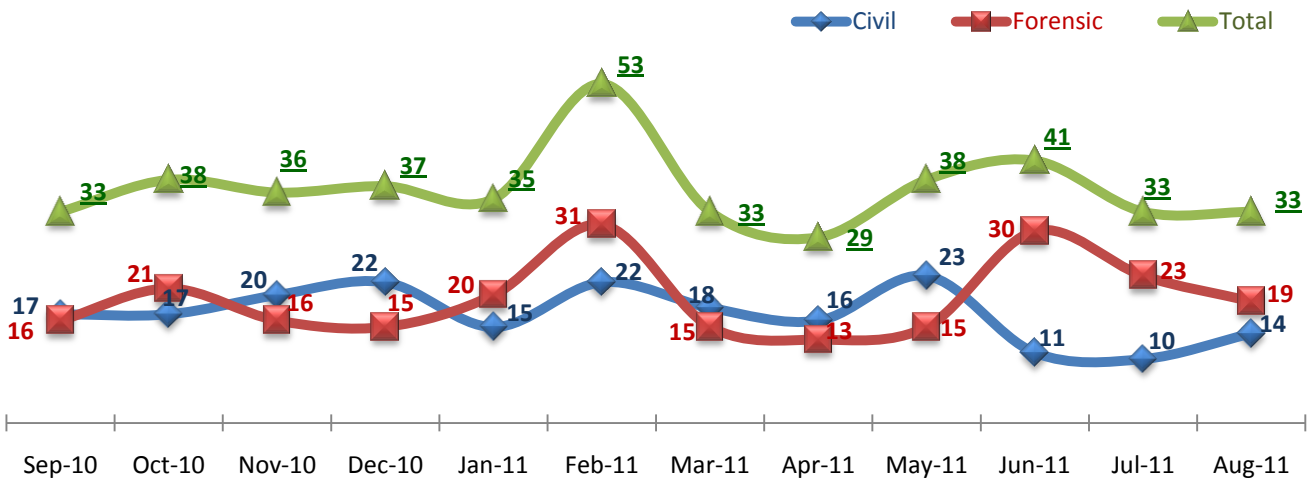
Office of Statistics and Reporting (OSR)

1. Admissions to SEH



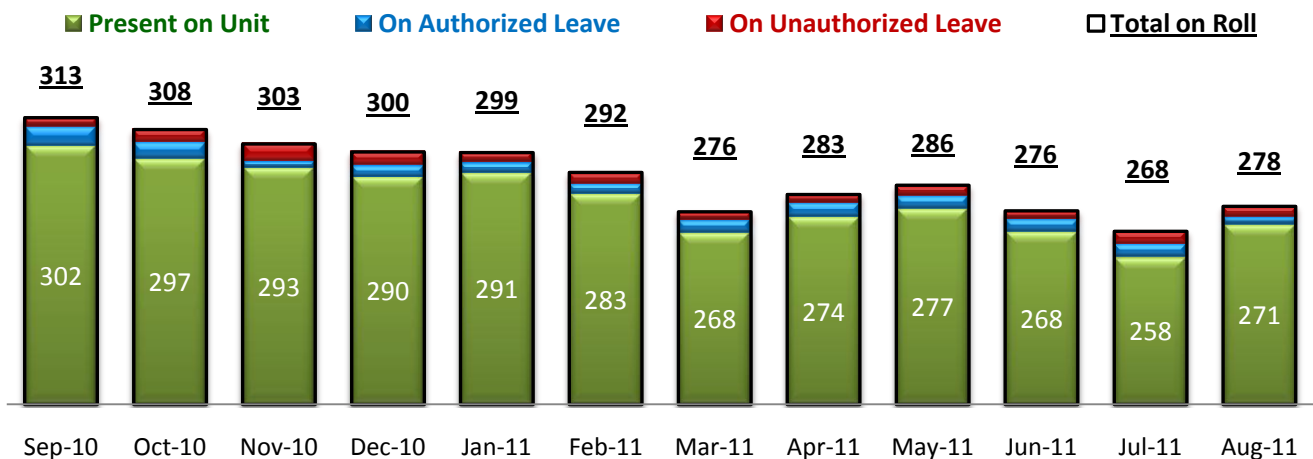
* Number of admissions to SEH inpatient program, including transfers from outpatient to inpatient program.

2. Discharges from SEH



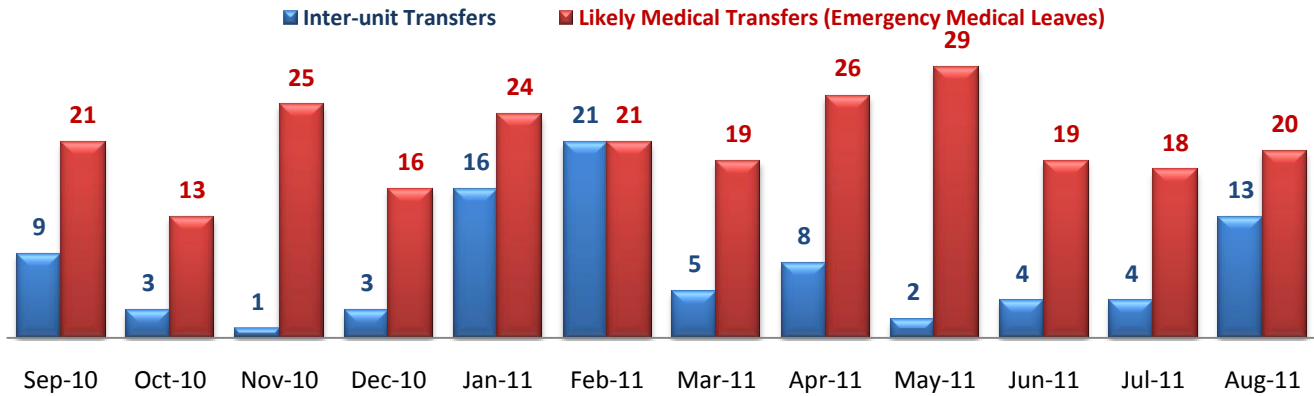
* Number of discharges from SEH inpatient program, including transfers from inpatient to outpatient program.

3. Average Daily Census



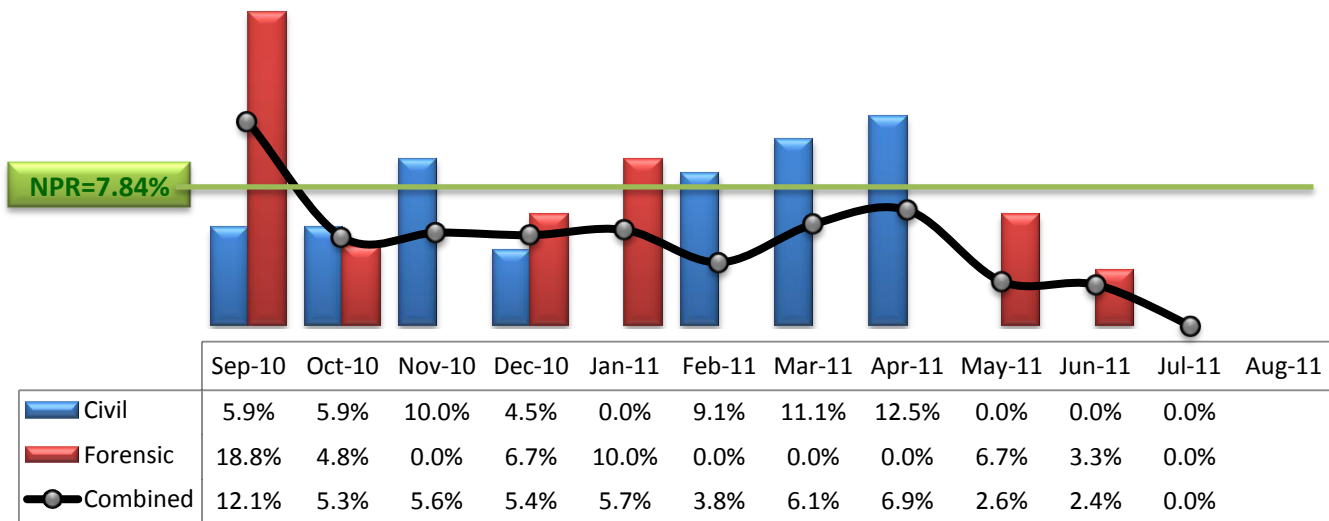
* Data above is the daily average number of individuals counted at 11:59 PM every day during each month.

4. Transfers



* Number of inter-unit transfers that occurred during month and number of emergency medical leaves that were initiated during month.

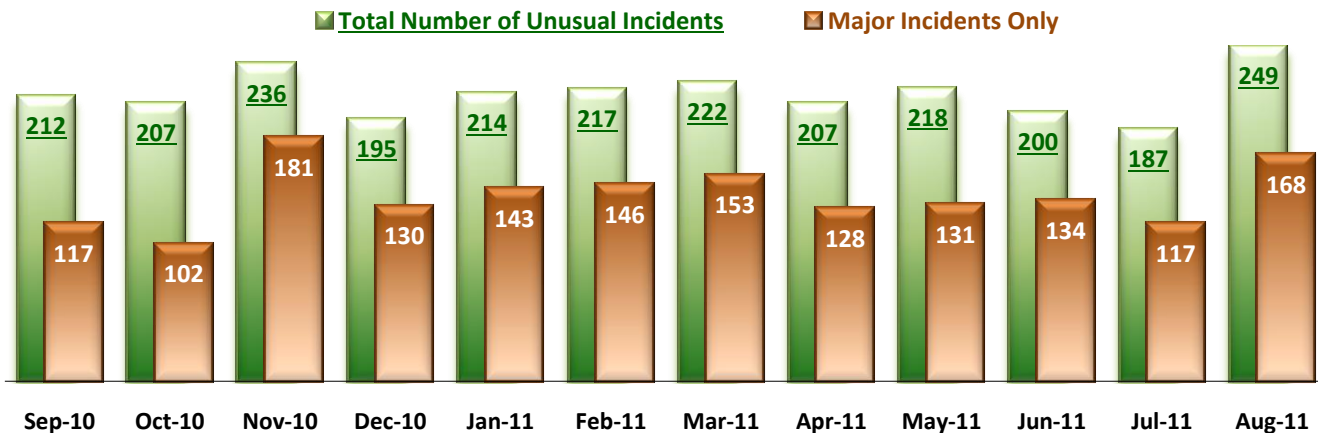
5. 30-Day Readmission Rate



* Percent of discharges that returned to SEH within 30 days of discharges. It does not include those who may have been re-hospitalized to another psychiatric facility. This measure requires 30-day observation following discharge.

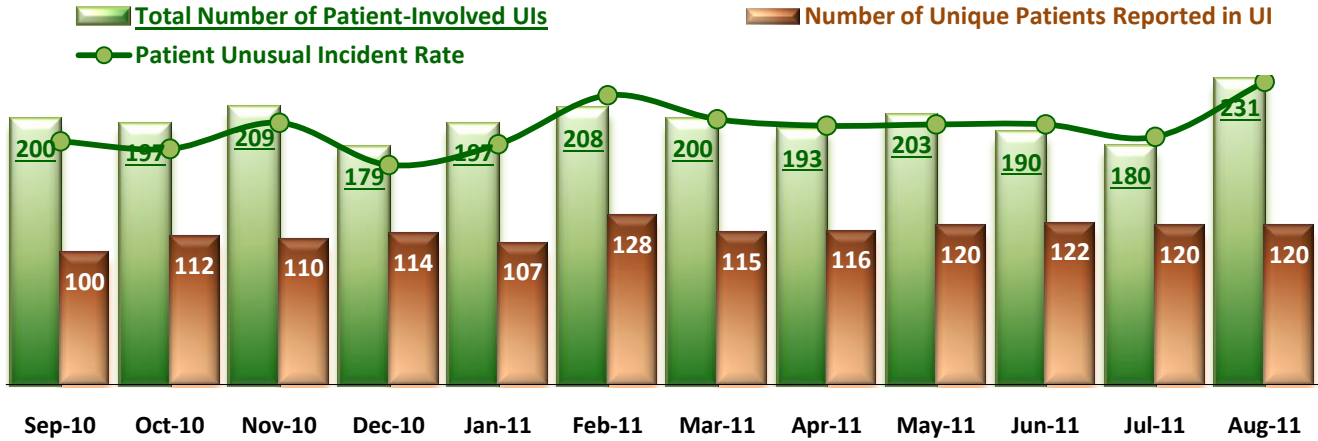
** NPR: National Public Rate as of December 2009 published by NASMHPD Research Institute in May 2010.

6. Unusual Incidents



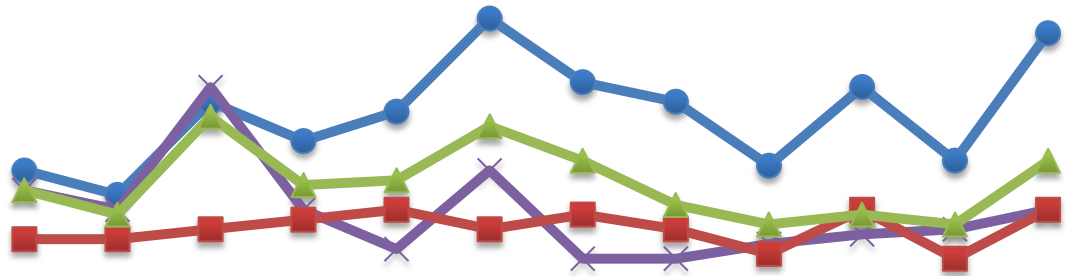
* Numbers above represent all types of the unusual incidents (UIs) that were reported to the Risk Manager by PRISM publication date, including those that did not involve any patients.

7. Patient-Involved Unusual Incidents



*The total number of patient-involved UIs counts only those incidents that involved at least one or more patients. Some patients may be involved in more than one incident and the number of unique patients does not double count them. The patient UI rate is the number of patient-involved unusual incidents reported for every 1000 inpatient days.

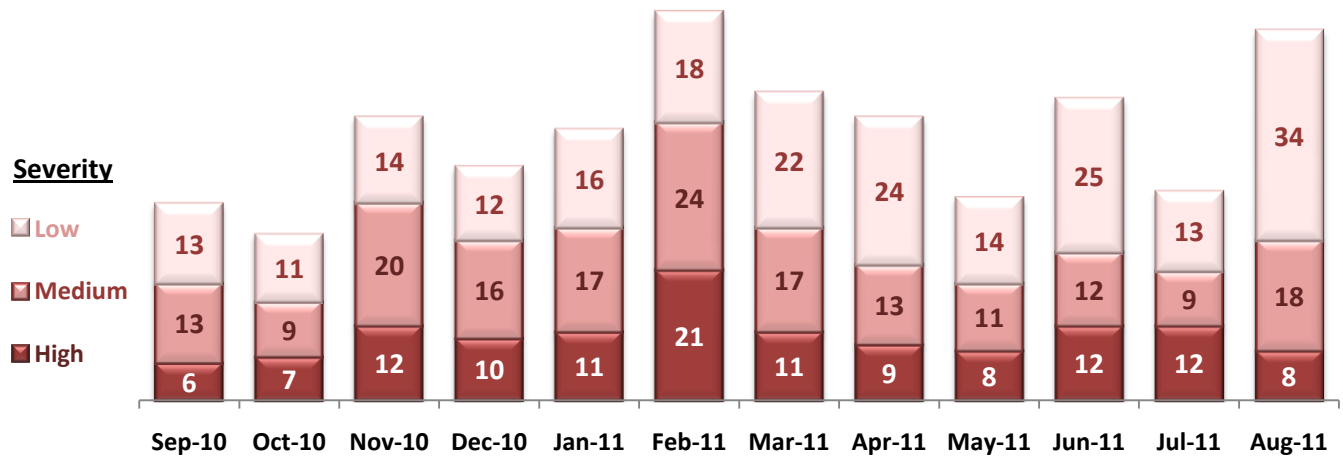
8. Selected Types of Incidents



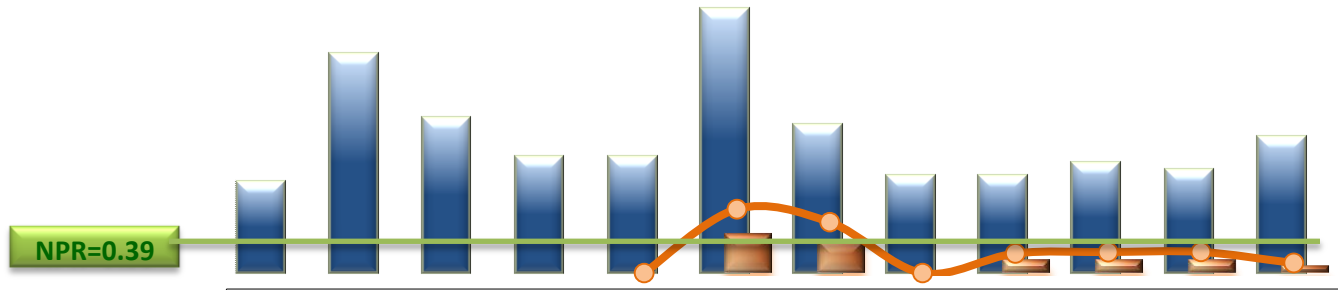
	Sep-10	Oct-10	Nov-10	Dec-10	Jan-11	Feb-11	Mar-11	Apr-11	May-11	Jun-11	Jul-11	Aug-11
Physical Assault	32	27	46	38	44	63	50	46	33	49	34	60
Psych Emergency	28	24	49	24	16	32	14	14	17	19	20	24
Fall	18	18	20	22	24	20	23	20	15	24	14	24
Injury	28	23	43	29	30	41	34	25	21	23	21	34

* These are incident types that are frequently reported. Some incidents may be counted in multiple categories. For example, a physical assault incident that accompanied psychiatric emergency and injury is counted under psychiatric emergency and injury as well as under physical assault. Injury is broadly defined to include any type of injuries regardless of the cause or severity level.

9. Physical Assaults by Severity



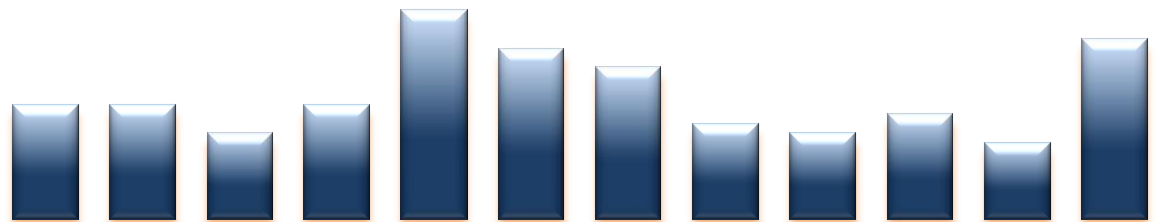
10. Patient Injuries



	Sep-10	Oct-10	Nov-10	Dec-10	Jan-11	Feb-11	Mar-11	Apr-11	May-11	Jun-11	Jul-11	Aug-11
Total Pts Injured	14	34	24	18	18	41	23	15	15	17	16	21
Major Pt Injuries*					0	6	5	0	2	2	2	1
Patient Injury Rate					0.00	0.76	0.60	0.00	0.23	0.25	0.25	0.12

* Injury is broadly defined to include any type of injuries regardless of the cause or severity level. The total number of patients injured represents all of the reported injuries including minor injuries treated with first aid alone. However, the patient injury rate considers only the number of patient injuries that required beyond first-aid level treatment based on the NRI definition and the patient injury rate is the number of 'major' patient injuries per every 1000 inpatient days. The major patient injury data became available in January 2011.

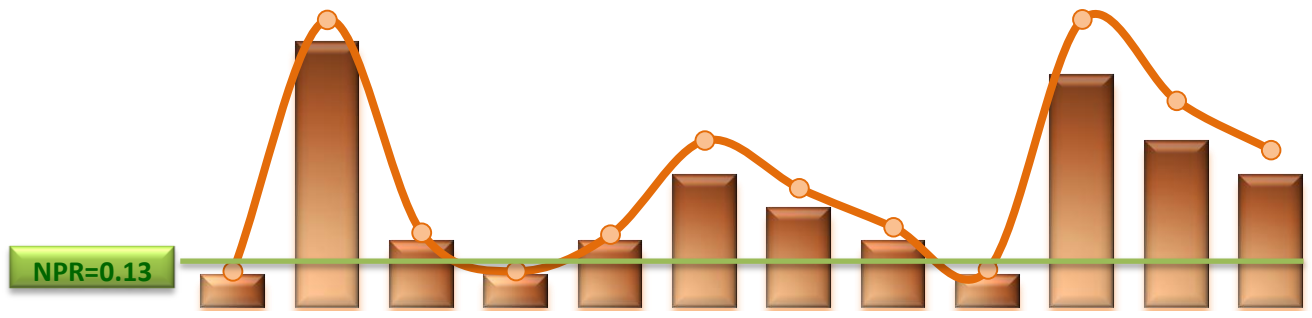
11. Staff Injuries



	Sep-10	Oct-10	Nov-10	Dec-10	Jan-11	Feb-11	Mar-11	Apr-11	May-11	Jun-11	Jul-11	Aug-11
# of Staff Injured	12	12	9	12	22	18	16	10	9	11	8	19

* Injury is broadly defined to include any type of injuries regardless of the cause or severity level. The total number of staff injured represents all of the reported staff injuries including minor injuries treated with first aid alone.

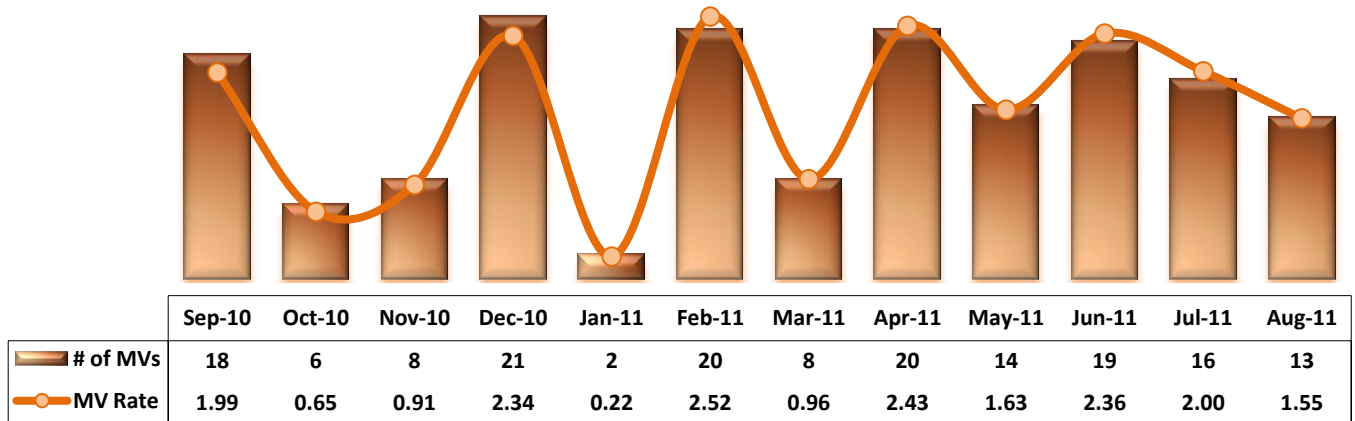
12. Elopements



	Sep-10	Oct-10	Nov-10	Dec-10	Jan-11	Feb-11	Mar-11	Apr-11	May-11	Jun-11	Jul-11	Aug-11
# of Elopements	1	8	2	1	2	4	3	2	1	7	5	4
Elopement Rate	0.11	0.87	0.23	0.11	0.22	0.50	0.36	0.24	0.12	0.87	0.62	0.48

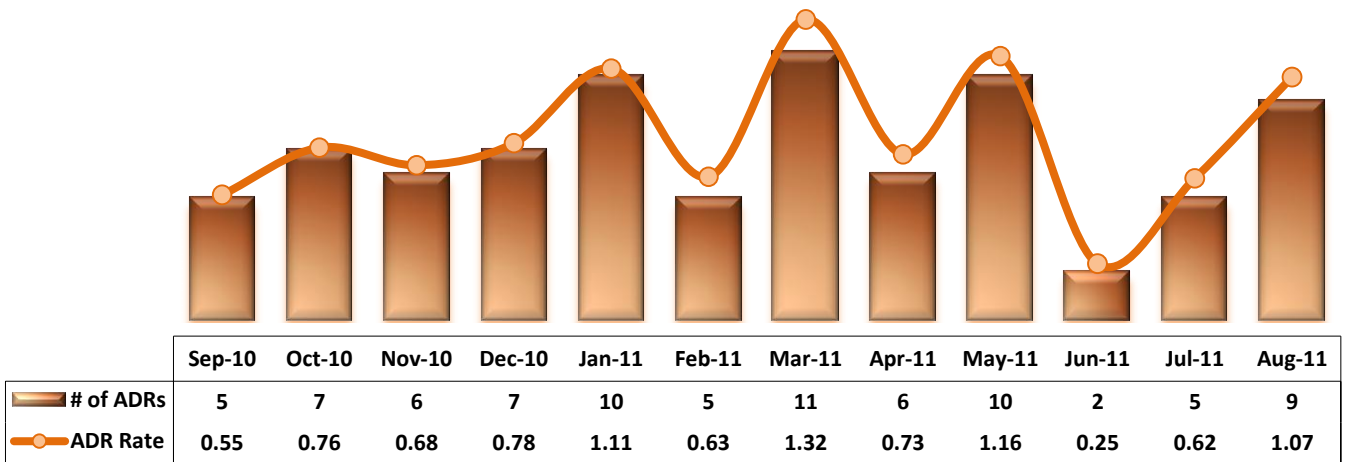
* It counts the total number of unauthorized leaves for any duration that were initiated during month and were recorded in Avatar. The elopement rate is the number of those unauthorized leaves that occurred for every 1000 inpatient days.

13. Reported Medication Variances



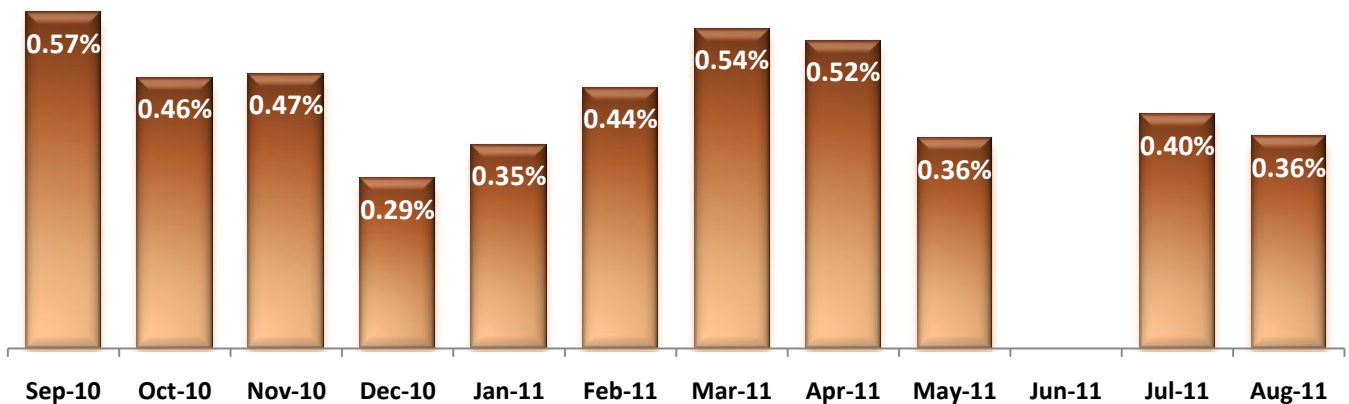
* MV Rate: Number of reported medication variance events that occurred for every 1000 inpatient days.

14. Reported Adverse Drug Reactions



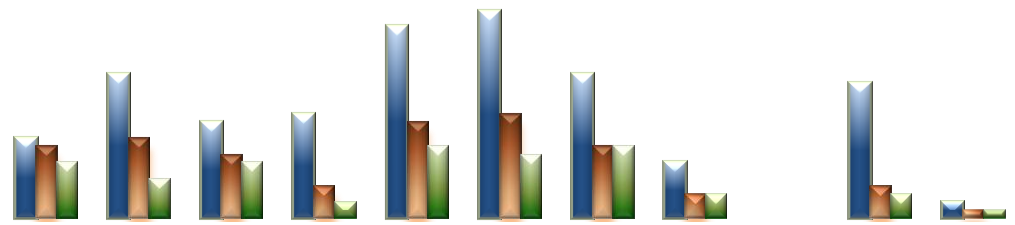
* ADR Rate: Number of reported adverse drug reaction events that occurred for every 1000 inpatient days.

15. Percent of Missing Documentation on Med-Administration



* June-2011 data is not available because of data tracking interruption caused by a technical glitch in Avatar early June.

16. Emergency Involuntary Medications Documented in eMar



	Oct-10	Nov-10	Dec-10	Jan-11	Feb-11	Mar-11	Apr-11	May-11	Jun-11	Jul-11	Aug-11
Total EIM Orders Administered	10	18	12	13	24	26	18	7	0	17	2
Unique EIM Events	9	10	8	4	12	13	9	3	0	4	1
Unique Patients Given EIM	7	5	7	2	9	8	9	3	0	3	1

* Some patients may have experienced multiple EIM events during month and some events may have involved multiples doses of medication ordered and administered.

** Unusual incident DB suggests that two EIM events occurred in June 2011 while Avatar eMar recorded none.

17. Percent of Patients Restrained or Secluded



	Sep-10	Oct-10	Nov-10	Dec-10	Jan-11	Feb-11	Mar-11	Apr-11	May-11	Jun-11	Jul-11	Aug-11
Restraint	0.0%	0.9%	0.9%	0.6%	0.3%	0.0%	0.0%	0.0%	0.0%	0.6%	0.7%	0.0%
Seclusion	1.2%	0.6%	0.6%	1.2%	0.6%	0.9%	1.0%	0.3%	0.3%	0.3%	1.0%	0.0%

* Percent of unique patients who were restrained at least once and percent of unique patients who were secluded at least once.

18. Restraint Hours Rate & Seclusion Hours Rate



	Sep-10	Oct-10	Nov-10	Dec-10	Jan-11	Feb-11	Mar-11	Apr-11	May-11	Jun-11	Jul-11	Aug-11
Restraint	0.00	0.02	0.01	0.05	0.00	0.00	0.00	0.00	0.00	0.01	0.01	0.00
Seclusion	0.01	0.01	0.02	0.03	0.01	0.02	0.05	0.01	0.00	0.01	0.03	0.00

* Restraint/Seclusion Hours Rate: Number of hours spent in restraint/seclusion for every 1000 inpatient hours.

Performance Related Information for Staff & Managers

1. Census, Admissions, Discharges & Transfers

Data Source: Avatar

Updated as of 09/12/11

Category	Sep-10	Oct-10	Nov-10	Dec-10	Jan-11	Feb-11	Mar-11	Apr-11	May-11	Jun-11	Jul-11	Aug-11	Monthly Average	Total (12mths)	Figure	
Admissions	Civil	20	13	17	16	11	12	20	16	18	8	12	14	15	177	Figure 1
	Forensic	11	21	15	19	22	17	17	22	19	17	24	31	20	235	
	Total	31	34	32	35	33	29	37	38	37	25	36	45	34	412	
Discharges	Civil	17	17	20	22	15	22	18	16	23	11	10	14	17	205	Figure 2
	Forensic	16	21	16	15	20	31	15	13	15	30	23	19	20	234	
	Total	33	38	36	37	35	53	33	29	38	41	33	33	37	439	
Net Gain During Month	Civil	3	-4	-3	-6	-4	-10	2	0	-5	-3	2	0		-28	
	Forensic	-5	0	-1	4	2	-14	2	9	4	-13	1	12		1	
	Total	-2	-4	-4	-2	-2	-24	4	9	-1	-16	3	12		-27	
All Individuals on Roll at End of Month	311	307	303	301	299	275	279	288	287	271	274	286	290			
a. Present on Unit	303	295	292	289	290	268	275	280	277	261	263	280	281			
b. On AL	5	7	6	7	6	3	1	5	6	5	7	1	5			
c. On UL	3	5	5	5	3	4	3	3	4	5	4	5	4			
All Individuals on Roll: Daily Average during Month	313	308	303	300	299	292	276	283	286	276	268	278	290			
a. Present on Unit*	302	297	293	290	291	283	268	274	277	268	258	271	281		Figure 3	
b. On AL	8	6	3	5	4	4	5	6	5	5	5	3	5			
c. On UL	3	5	7	5	4	4	3	3	4	3	5	4	4			
Patient Days*	9063	9213	8799	8983	9031	7925	8307	8217	8601	8050	8008	8407	8550	102604		
Inter-Unit Transfers during Month	9	3	1	3	16	21	5	8	2	4	4	13	7	89	Figure 4	
Medical Leaves Initiated during Month	21	13	25	16	24	21	19	26	29	19	18	20	21	251		
Emergency	9	12	20	23	26	21	21	35	15	5	12	15	18	214		
Non-Emer																
Total	30	25	45	39	50	42	40	61	44	24	30	35	39	465		
Non-Medical Leaves Initiated during Month	82	102	81	93	91	111	67	60	56	45	63	63	76	914		
UL Initiated during Month	1	8	2	1	2	4	3	2	1	7	5	4	3	40		
Total Unique Patients Served during Month	340	343	343	334	334	325	308	311	324	308	305	319	325			
30 Day Readmission **	Civil	1	1	2	1	0	2	2	2	0	0	0		1	11	
	Forensic	3	1	0	1	2	0	0	0	1	1	0		1	9	
	Total	4	2	2	2	2	2	2	2	1	1	0		2	20	

* Counts the number of patients who are present on the unit and excludes those on authorized or unauthorized leave at 11:59pm on a given day.

** Number of patients returning within 30 days of discharges that occurred during month.

Performance Related Information for Staff & Managers

2. Key Performance Indicators

Data Source: UI DB, ADR DB, Restraint/Seclusion Log, and Avatar

Updated as of 09/12/11

Category	Sep-10	Oct-10	Nov-10	Dec-10	Jan-11	Feb-11	Mar-11	Apr-11	May-11	Jun-11	Jul-11	Aug-11	Monthly Average	NPR* (Dec-09)	Figure
30 Day Readmit (Discharge Cohort)**	Civil	5.9%	5.9%	10.0%	4.5%	0.0%	9.1%	11.1%	12.5%	0.0%	0.0%	0.0%	5.9%		Figure 5
	Forensic	18.8%	4.8%	0.0%	6.7%	10.0%	0.0%	0.0%	0.0%	6.7%	3.3%	0.0%	4.2%		
	Combined	12.1%	5.3%	5.6%	5.4%	5.7%	3.8%	6.1%	6.9%	2.6%	2.4%	0.0%	5.0%	7.8%	
Number of Unusual Incidents	212	207	236	195	214	217	222	207	218	200	187	249	214		Figure 6
Patient Unusual Incident Rate	22.07	21.38	23.75	19.93	21.81	26.25	24.08	23.49	23.60	23.60	22.48	27.48	23.26		Figure 7
Selected Types of Incidents	Physical Assault	32	27	46	38	44	63	50	46	33	49	34	60	44	Figure 8
	Psych Emergency	28	24	49	24	16	32	14	14	17	19	20	24	23	
	Fall	18	18	20	22	24	20	23	20	15	24	14	24	20	
	Injury***	28	23	43	29	30	41	34	25	21	23	21	34	29	
Physical Assaults by Severity	High	6	7	12	10	11	21	11	9	8	12	12	8	10	Figure 9
	Medium	13	9	20	16	17	24	17	13	11	12	9	18	13	
	Low	13	11	14	12	16	18	22	24	14	25	13	34	22	
Patient Injury Rate***					0.00	0.76	0.60	0.00	0.23	0.25	0.25	0.12	0.26	0.39	Figure 10
Patients with Major Injuries***					0	6	5	0	2	2	2	1	2		
Total Patients Injured***	14	34	24	18	18	41	23	15	15	17	16	21	21		
Total Staff Injured***	12	12	9	12	22	18	16	10	9	11	8	20	13		Figure 11
Elopement Rate	0.11	0.87	0.23	0.11	0.22	0.50	0.36	0.24	0.12	0.87	0.62	0.48	0.48	0.13	Figure 12
Medication Variance Rate	1.99	0.65	0.91	2.34	0.22	2.52	0.96	2.43	1.63	2.36	2.00	1.55	1.61		Figure 13
Adverse Drug Reaction Rate	0.55	0.76	0.68	0.78	1.11	0.63	1.32	0.73	1.16	0.25	0.62	1.07	0.81		Figure 14
Missing Med-Admin Documentation	0.57%	0.46%	0.47%	0.29%	0.35%	0.44%	0.54%	0.52%	0.36%		0.40%	0.36%	0.43%		Figure 15
Emergency Involuntary Meds			18	12	13	24	26	18	7	0	17	2	13		Figure 16
Unique EIM Events			10	8	4	12	13	9	3	0	4	1	7		
Unique Patients given EIM			5	7	2	9	8	9	3	0	3	1	5		
Percent of Patients Restrained	0.0%	0.9%	0.9%	0.6%	0.3%	0.0%	0.0%	0.0%	0.0%	0.6%	0.7%	0.0%	0.3%	3.6%	Figure 17
Percent of Patients Secluded	1.2%	0.6%	0.6%	1.2%	0.6%	0.9%	1.0%	0.3%	0.3%	0.3%	1.0%	0.0%	0.7%	2.6%	
Restraint Hours Rate	0.00	0.02	0.01	0.05	0.00	0.00	0.00	0.00	0.00	0.01	0.01	0.00	0.01	0.42	Figure 18
Seclusion Hours Rate	0.01	0.01	0.02	0.03	0.01	0.02	0.05	0.01	0.00	0.01	0.03	0.00	0.02	0.55	

* National Public Rate, NASMHPD Research Institute

** Percentage of patients returning within 30 days of discharges that occurred during month

*** Injury is broadly defined to include any type of injuries regardless of the cause or severity level. The total number of patients or staff injured represents all of the reported injuries including minor injuries treated with first aid alone. However, the patient injury rate considers only the number of patient injuries that required beyond first-aid level treatment based on the NRI definition and the patient injury rate is the number of 'major' patient injuries per every 1000 inpatient days. The patient major injury data became available in January 2011.

Performance Related Information for Staff & Managers

3. Unusual Incident & Medication

Data Source: UI DB, ADR DB, and Avatar

Updated as of 09/12/11

Category	Sep-10	Oct-10	Nov-10	Dec-10	Jan-11	Feb-11	Mar-11	Apr-11	May-11	Jun-11	Jul-11	Aug-11	Monthly Average	Total (12mths)	NPR* (Dec-09)	
Total Unusual Incidents**	212	207	236	195	214	217	222	207	218	200	187	249	214	2564		
Total Major Unusual Incidents	117	102	181	130	143	146	153	128	131	134	117	168	138	1650		
Patient Involved UI Only**	200	197	209	179	197	208	200	193	203	190	180	231	199	2387		
<i>Patient UI Rate</i>	<i>22.07</i>	<i>21.38</i>	<i>23.75</i>	<i>19.93</i>	<i>21.81</i>	<i>26.25</i>	<i>24.08</i>	<i>23.49</i>	<i>23.60</i>	<i>23.60</i>	<i>22.48</i>	<i>27.48</i>	<i>23.26</i>			
Unique Patients Involved in UI**	100	112	110	114	107	128	115	116	120	122	120	120	115	1384		
Selected Types of Incidents	Physical Assault	32	27	46	38	44	63	50	46	33	49	34	60	44	522	
	Psych Emergency	28	24	49	24	16	32	14	14	17	19	20	24	23	281	
	Fall	18	18	20	22	24	20	23	20	15	24	14	24	20	242	
	Injury	28	23	43	29	30	41	34	25	21	23	21	34	29	352	
Physical Assaults by Severity	High	6	7	12	10	11	21	11	9	8	12	12	8	10		
	Medium	13	9	20	16	17	24	17	13	11	12	9	18	13		
	Low	13	11	14	12	16	18	22	24	14	25	13	34	22		
Total Patients Injured***	14	34	24	18	18	41	23	15	15	17	16	21	21	256		
Patients with Major Injuries***					0	6	5	0	2	2	2	1	2	18		
<i>Patient Injury Rate***</i>					<i>0.00</i>	<i>0.76</i>	<i>0.60</i>	<i>0.00</i>	<i>0.23</i>	<i>0.25</i>	<i>0.25</i>	<i>0.12</i>	<i>0.26</i>		<i>0.39</i>	
Total Staff Injured**	12	12	9	12	22	18	16	10	9	11	8	20	13			
Total UL Incident Reports	1	8	6	1	4	3	4	3	7	4	5	3	4	49		
Total ULs Documented in Avatar	1	8	2	1	2	4	3	2	1	7	5	4	3			
<i>Elopement Rate</i>	<i>0.11</i>	<i>0.87</i>	<i>0.23</i>	<i>0.11</i>	<i>0.22</i>	<i>0.50</i>	<i>0.36</i>	<i>0.24</i>	<i>0.12</i>	<i>0.87</i>	<i>0.62</i>	<i>0.48</i>	<i>0.48</i>		<i>0.13</i>	
Total Medication Variance (MV) Incidents Reported **	18	6	8	21	2	20	8	20	14	19	16	13	14	165		
<i>MV Rate</i>	<i>1.99</i>	<i>0.65</i>	<i>0.91</i>	<i>2.34</i>	<i>0.22</i>	<i>2.52</i>	<i>0.96</i>	<i>2.43</i>	<i>1.63</i>	<i>2.36</i>	<i>2.00</i>	<i>1.55</i>	<i>1.61</i>			
Total Adverse Drug Reactions (ADR) Reported	5	7	6	7	10	5	11	6	10	2	5	9	7	83		
<i>ADR Rate</i>	<i>0.55</i>	<i>0.76</i>	<i>0.68</i>	<i>0.78</i>	<i>1.11</i>	<i>0.63</i>	<i>1.32</i>	<i>0.73</i>	<i>1.16</i>	<i>0.25</i>	<i>0.62</i>	<i>1.07</i>	<i>0.81</i>			
Total Routine Medication Administrations Scheduled	109712	111397	104863	107095	105329	93288	99376	97031	101053		96167	96945		1122256		
Total Missing Documentations	626	512	490	309	365	413	540	507	361		383	349		4855		
<i>Percent of Missing Documentation</i>	<i>0.57%</i>	<i>0.46%</i>	<i>0.47%</i>	<i>0.29%</i>	<i>0.35%</i>	<i>0.44%</i>	<i>0.54%</i>	<i>0.52%</i>	<i>0.36%</i>		<i>0.40%</i>	<i>0.36%</i>		<i>0.43%</i>		
Total Patients with >=3 STATs	28	31	29	25	44	53	33	53	30	18	17	20	32			
Emergency STAT Med Orders Administered Involuntarily (EIM)		10	18	12	13	24	26	18	7	0	17	2	13			
Unique EIM Events		9	10	8	4	12	13	9	3	0	4	1	7			
Unique Patients given EIM		7	5	7	2	9	8	9	3	0	3	1	5			

* National Public Rate, NASMHPD Research Institute

** Numbers may change if any additional UI report is made after the data run date from UI database (around the 15th of the following month).

*** Avatar report that indicates the number of patients with 3 or more STATs was unavailable at report run time

Performance Related Information for Staff & Managers

4. Restraint & Seclusion

Data Source: Restraint/Seclusion Log and UI DB (for # of total events and patients) and Avatar (for patient days/hours)

Updated as of 09/12/11

Category	Sep-10	Oct-10	Nov-10	Dec-10	Jan-11	Feb-11	Mar-11	Apr-11	May-11	Jun-11	Jul-11	Aug-11	Monthly Average	Total (12mths)	NPR* (Dec-09)
Number of Restraint Events	0	3	4	8	1	0	0	0	0	2	2	0	1.7	20	
Number of Unique Patients Restrained	0	3	3	2	1	0	0	0	0	2	2	0	1.1		
Percentage of Patients Restrained	0.0%	0.9%	0.9%	0.6%	0.3%	0.0%	0.0%	0.0%	0.0%	0.6%	0.7%	0.0%	0.3%		3.6%
Total Restraint Hours (h:mm)	0:00	3:20	2:46	11:08	0:20	0:00	0:00	0:00	0:00	2:50	1:45	0:00	1:50	22:09	
Restraint Hours Rate	0.00	0.02	0.01	0.05	0.00	0.00	0.00	0.00	0.00	0.01	0.01	0.00	0.01		0.42
Number of Seclusion Events	5	2	2	2	3	3	6	1	1	1	3	0	2.4	29	
Number of Unique Patients Secluded	4	2	2	4	2	3	3	1	1	1	3	0	2.2		
Percentage of Patients Secluded	1.2%	0.6%	0.6%	1.2%	0.6%	0.9%	1.0%	0.3%	0.3%	0.3%	1.0%	0.0%	0.7%		2.6%
Total Seclusion Hours (h:mm)	2:10	1:20	4:57	6:40	2:10	3:25	9:15	1:00	1:00	1:11	5:10	0:00	3:11	38:18	
Seclusion Hours Rate	0.01	0.01	0.02	0.03	0.01	0.02	0.05	0.01	0.00	0.01	0.03	0.00	0.02		0.55

* National Public Rate, NASMHPD Research Institute

Performance Related Information for Staff & Managers

5. Major Incidents by Incident Location/Unit

Data Source: UI DB

Updated as of 09/12/11

Category		Sep-10	Oct-10	Nov-10	Dec-10	Jan-11	Feb-11	Mar-11	Apr-11	May-11	Jun-11	Jul-11	Aug-11	Monthly Average	Total (11mths)	Percent	
Total Unusual Incidents		212	207	236	195	214	217	222	207	218	200	187	248	214	2563		
Total Major Incidents*		117	102	181	130	143	146	153	128	131	134	117	168	138	1650	100%	
Major Incident Location	1A	14	11	12	10	11	5	11	13	17	7	9	18	12	138	8%	
	1B	12	13	12	6	6	9	12	7	24	16	18	19	13	154	9%	
	1C	6	7	4	14	8	15	9	10	3	12	4	10	9	102	6%	
	1D	19	11	42	32	9	10	14	13	11	10	6	4	15	181	11%	
	1E	7	7	12	9	16	33	22	21	22	15	21	22	17	207	13%	
	1F	11	9	13	12	14	20	9	9	11	11	8	3	11	130	8%	
	1G	13	5	12	9	11	9	13	15	4	6	10	21	11	128	8%	
	2A	6	2	4	4	6	3	4	2	3	3	0	5	4	42	3%	
	2B	0	4	6	2	4	0	1	3	1	0	2	1	2	24	1%	
	2C	3	5	12	11	17	14	18	7	11	11	6	8	10	123	7%	
	2D	11	9	22	5	10	12	7	7	6	10	11	21	11	131	8%	
	ANXA/B	2	3	4	0	5	0	-	-	-	-	-	-	-	2	14	1%
	TLC	3	7	10	3	12	9	17	11	7	19	11	16	10	125	8%	
	Other	10	9	16	13	14	7	16	10	11	14	11	20	13	151	9%	
Total Physical Assault Incidents		32	27	46	38	44	63	50	46	33	49	34	60	44	522	100%	
Assault Incident Location	1A	2	1	5	2	4	1	1	3	3	1	4	5	3	32	6%	
	1B	2	2	0	0	0	1	2	1	3	2	3	6	2	22	4%	
	1C	2	4	2	6	4	4	2	3	0	6	1	2	3	36	7%	
	1D	6	1	8	7	6	6	11	8	5	6	2	0	6	66	13%	
	1E	3	1	5	2	4	17	8	13	8	5	9	10	7	85	16%	
	1F	4	6	4	4	6	13	3	3	4	4	1	2	5	54	10%	
	1G	4	1	7	4	6	8	7	5	0	3	4	8	5	57	11%	
	2A	1	0	1	2	0	0	1	0	1	0	0	0	1	6	1%	
	2B	0	0	2	1	0	0	0	0	1	0	1	0	0	5	1%	
	2C	1	1	0	3	5	3	3	0	3	8	1	4	3	32	6%	
	2D	5	5	10	4	5	5	4	3	1	4	6	10	5	62	12%	
	ANXA/B	0	1	1	0	0	0	-	-	-	-	-	-	0	2	0%	
	TLC	2	3	1	3	3	3	7	5	4	5	2	9	4	47	9%	
	Other	0	1	0	0	1	2	1	2	0	5	0	4	1	16	3%	

Performance Related Information for Staff & Managers

5. Major Incidents by Incident Location/Unit

Data Source: UI DB

Updated as of 09/12/11

Category	Sep-10	Oct-10	Nov-10	Dec-10	Jan-11	Feb-11	Mar-11	Apr-11	May-11	Jun-11	Jul-11	Aug-11	Monthly Average	Total (11mths)	Percent
Total Fall Incidents	18	18	20	22	24	20	23	20	15	24	14	24	20	242	100%
Fall Incident Location															
1A	5	7	5	3	5	2	7	5	1	5	4	4	4	53	22%
1B	2	5	3	2	3	2	1	2	1	3	5	4	3	33	14%
1C	0	0	1	5	0	2	2	1	1	0	0	3	1	15	6%
1D	1	1	0	3	1	1	0	2	2	2	2	0	1	15	6%
1E	0	1	0	1	3	1	0	0	3	0	0	2	1	11	5%
1F	2	0	1	0	0	0	1	0	1	0	0	0	0	5	2%
1G	1	0	0	1	1	0	2	0	0	0	0	0	0	5	2%
2A	1	0	0	1	1	1	1	1	0	0	0	1	1	7	3%
2B	0	2	0	0	0	0	0	1	0	0	0	1	0	4	2%
2C	1	1	4	2	2	5	2	2	2	1	0	0	2	22	9%
2D	0	1	4	0	1	1	0	2	0	2	1	5	1	17	7%
ANXA/B	2	0	0	0	0	0	-	-	-	-	-	-	0	2	1%
TLC	0	0	1	0	3	4	4	3	2	9	2	3	3	31	13%
Other	3	0	1	4	4	1	3	1	2	2	0	1	2	22	9%
Total Injury Incidents	28	23	43	29	30	41	34	25	21	23	21	34	29	352	100%
Injury Incident Location															
1A	4	3	5	2	2	0	3	3	1	0	4	6	3	33	9%
1B	1	3	2		2	2	3	0	6	1	3	1	2	24	7%
1C	0	3	2	3	2	0	1	2	1	1	1	3	2	19	5%
1D	6		12	8	1	2	6	3	2	4	1	0	4	45	13%
1E	3	1	3	2	2	8	2	2	5	3	2	6	3	39	11%
1F	2	2	6	3	3	10	1	1	3	3	1	0	3	35	10%
1G	1	0	3	2	3	5	4	4	0	0	0	5	2	27	8%
2A	1	0	0	3	1	0	1	0	0	0	0	0	1	6	2%
2B	0	1	2	0	1	0	0	0	0	0	1	1	1	6	2%
2C	2	2	1	0	3	3	6	1	0	1	3	4	2	26	7%
2D	2	3	4	2	1	6	1	2	1	2	2	2	2	28	8%
ANXA/B	2	1	0	0	0	0	-	-	-	-	-	-	1	3	1%
TLC	0	2	0	2	3	2	5	6	1	4	2	1	2	28	8%
Other	4	2	3	2	6	3	1	1	1	4	1	5	3	33	9%

* Not every incident is a major incident. This counts only those major incidents that required extensive investigations from the risk manager.

- Annex A/B Closed in February 2011. All patients were transferred to other units.

Performance Related Information for Staff & Managers

6. Demographic Information of Individuals in Care

Data Source: Avatar

Updated as of 09/12/11

Category	Sub-group	Sep-10	Oct-10	Nov-10	Dec-10	Jan-11	Feb-11	Mar-11	Apr-11	May-11	Jun-11	Jul-11	Jul-11	Monthly Average	Percent*
Total Active (on Roll) at End of Month*		311	307	303	301	299	275	279	288	287	271	274	286	290	
Gender	Female	86	80	75	74	71	66	67	69	72	59	58	68	70	24.3%
	Male	225	227	228	227	228	209	212	219	215	212	216	218	220	75.7%
Age	Median Age (Years)	55 yrs	55 yrs	55 yrs	55 yrs	54 yrs	55 yrs	55 yrs	55 yrs	55 yrs	55 yrs	55 yrs	54 yrs	55 yrs	
	<30 years old	23	18	14	15	14	16	15	19	20	18	18	18	17	6.0%
	>=30 and <40 years old	21	22	24	30	31	23	27	29	30	23	24	27	26	8.9%
	>=40 and <50 years old	59	64	62	56	58	47	49	47	47	45	48	53	53	18.2%
	>=50 and <60 years old	119	120	119	118	114	114	108	113	111	107	105	108	113	39.0%
	>=60 years old	89	83	84	82	82	75	80	80	79	78	79	80	81	27.9%
Legal Status of Individuals on Roll at End of Month	Emergency	36			26	19	19	21	22	15	14	18	20	21	7.2%
	Inpatient Commitment	35			33	35	32	31	30	30	33	32	32	32	11.1%
	Outpatient Commitment	31			30	32	29	29	28	30	26	25	26	29	9.9%
	Voluntary	43			46	43	41	40	41	41	40	41	38	41	14.3%
	Civil Sub-total	145			135	129	121	121	121	116	113	116	116	123	42.5%
	DC Exam	52			51	55	42	41	49	51	38	44	54	48	16.4%
	Mentally Incompetent	5			3	3	2	2	4	4	3	3	4	3	1.1%
	NGBRI - DC	91			94	94	93	98	96	96	98	93	95	95	32.7%
	NGBRI - US	10			10	10	9	9	10	12	12	12	11	11	3.6%
NGBIR - VI	2			2	2	2	2	2	2	2	1	1	2	0.6%	
Dual Commitment	1			1	1	1	1	1	1	1	1	1	1	0.3%	
Non-Protesting	1			1	1	1	1	1	1	1	1	1	1	0.3%	
Sexual Psychopath (Miller Ac	4			4	4	4	4	4	4	4	3	3	4	1.3%	
	Forensic Sub-total	166			166	170	154	158	167	171	158	158	170	164	56.5%
Length of Stay	Median LOS (Days)	811 d			903 d	934 d	1091 d	994 d	923 d	949 d	1073 d	1043 d	856 d	958 d	
	Average LOS (Days)	2967 d			3099 d	3133 d	3282 d	3192 d	3069 d	3093 d	3261 d	3194 d	3033 d	3132 d	
	<30 Days	28			27	32	30	33	34	30	22	33	39	31	10.6%
	>=30 ~ <365 Days	82			79	74	60	62	68	72	69	61	68	70	24.0%
	>= 1 Year & < 2 Years	38			30	29	27	28	32	29	25	27	25	29	10.0%
	>= 2 Years & < 5 Years	44			48	47	45	44	40	43	43	43	45	44	15.2%
>= 5 Years & < 20 Years	69			66	66	63	64	67	65	64	63	62	65	22.4%	
>= 20 Years	50			51	51	50	48	47	48	48	47	47	49	16.8%	

* Counts the total number of individuals who are on the hospital roll at end of each month. This number serves as denominator to calculate percentage of each group.