

**Government of the District of Columbia  
Department of Mental Health (DMH)**

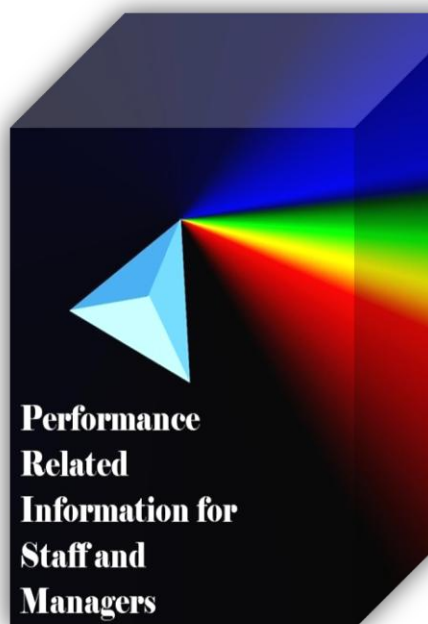


**Performance Related Information for Staff and Managers**

# **PRISM**

## **FEBRUARY 2012**

Table of Contents

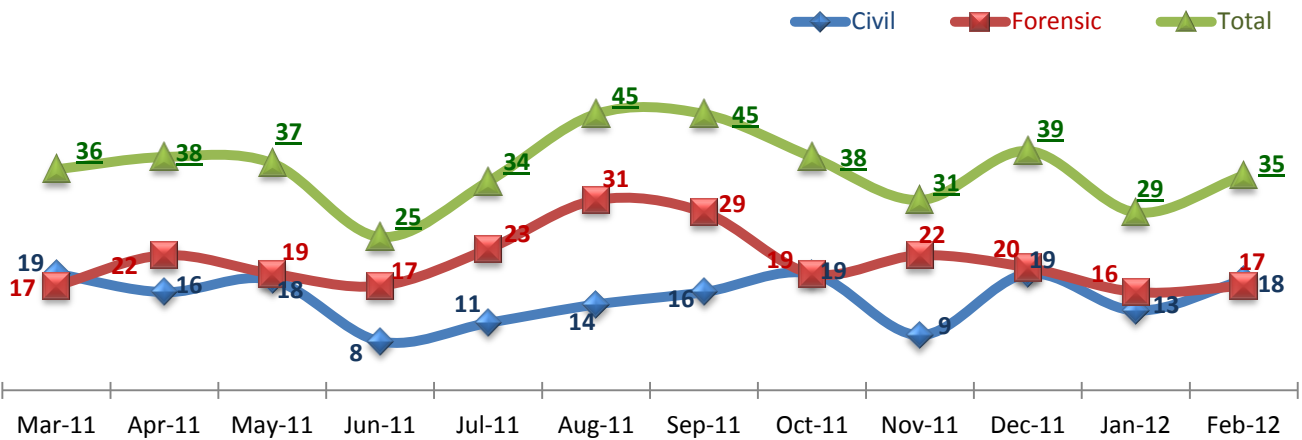


1.	Admissions to SEH .....	1
2.	Discharges from SEH.....	1
3.	Average Daily Census .....	1
4.	Transfers .....	2
5.	30-Day Readmission Rate .....	2
6.	Unusual Incidents.....	2
7.	Patient-Involved Unusual Incidents.....	3
8.	Selected Types of Incidents .....	3
9.	Physical Assaults by Severity .....	3
10.	Patient Injuries .....	4
11.	Staff Injuries .....	4
12.	Eloperments .....	4
13.	Reported Medication Variances .....	5
14.	Reported Adverse Drug Reactions .....	5
15.	Percent of Missing Documentation on Med-Administration.....	5
16.	Emergency Involuntary Medications Documented in eMar .....	6
17.	Percent of Patients Restrained or Secluded.....	6
18.	Restraint Hours Rate & Seclusion Hours Rate .....	6
	<input type="checkbox"/> Appendix 1) Table – Census, Admissions & Discharges	
	<input type="checkbox"/> Appendix 2) Table – Key Performance Indicators	
	<input type="checkbox"/> Appendix 3) Table – Unusual Incident & Medication	
	<input type="checkbox"/> Appendix 4) Table – Restraint & Seclusion	
	<input type="checkbox"/> Appendix 5) Table – Major Incidents by Incident Location/Unit	
	<input type="checkbox"/> Appendix 6) Table – Demographic Information of Individuals in Care	

**3/12/2012**

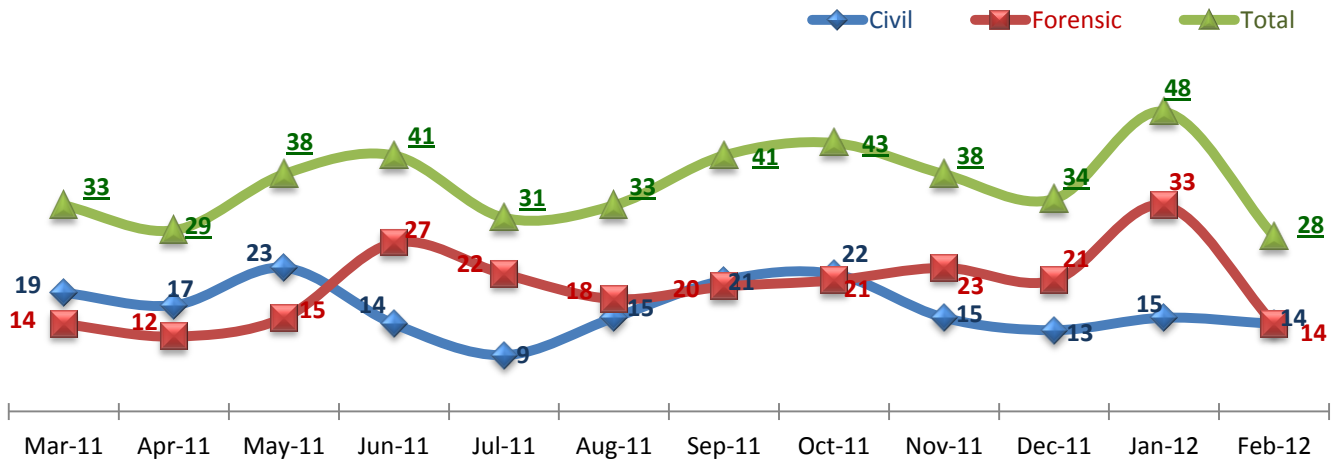
**Office of Statistics and Reporting (OSR)**

### 1. Admissions to SEH



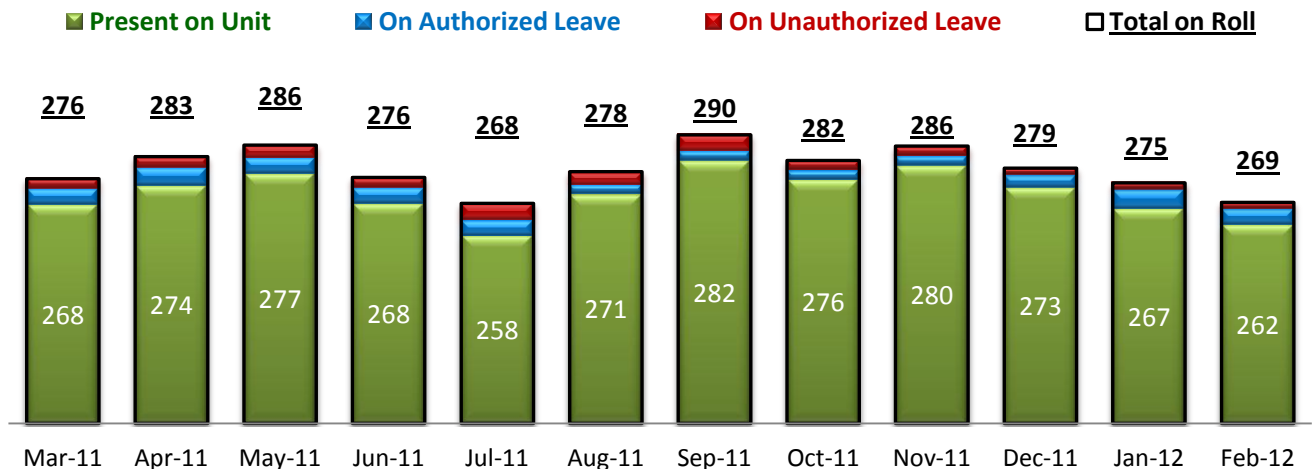
\* Number of admissions to SEH inpatient program, including transfers from outpatient to inpatient program.

### 2. Discharges from SEH



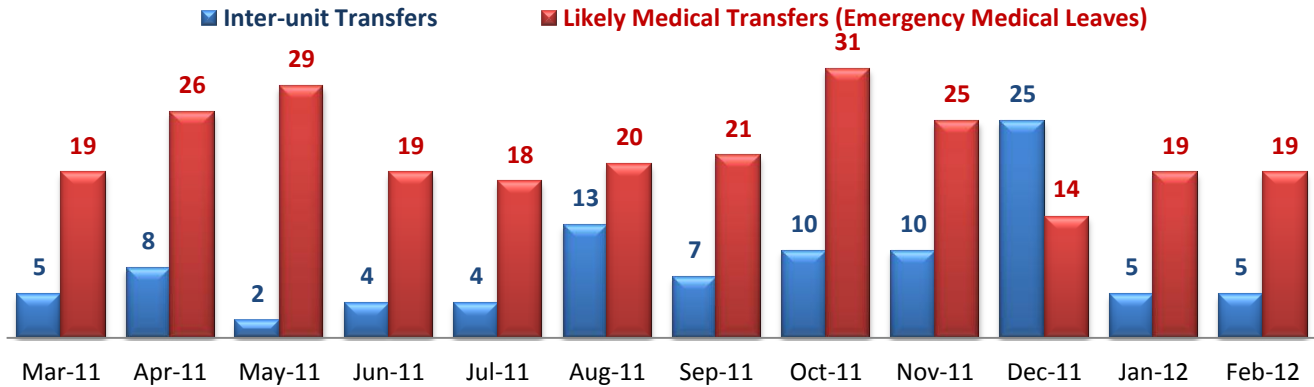
\* Number of discharges from SEH inpatient program, including transfers from inpatient to outpatient program.

### 3. Average Daily Census



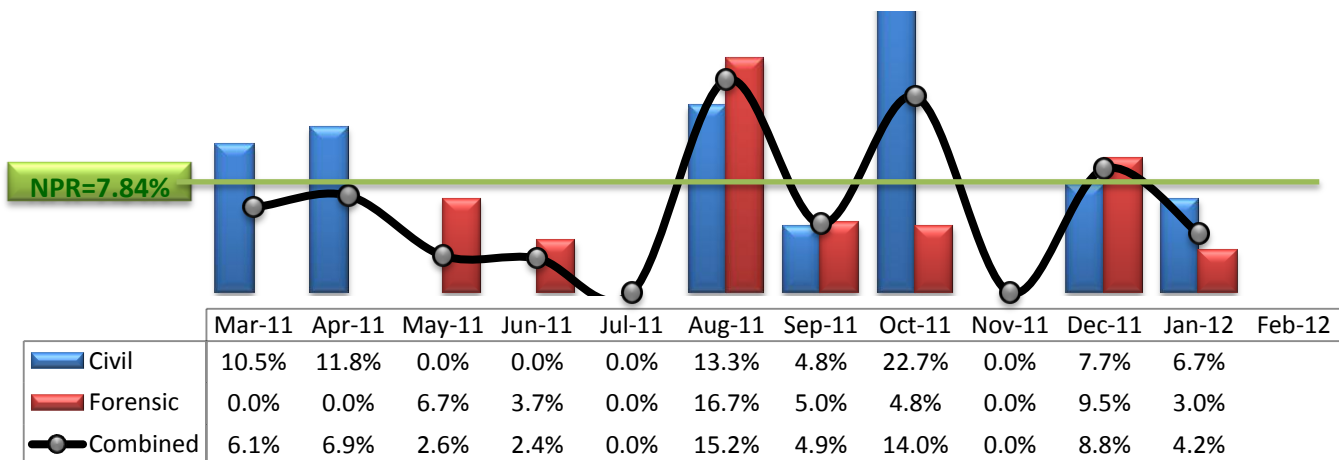
\* Data above is the daily average number of individuals counted at 11:59 PM every day during each month.

### 4. Transfers



\* Number of inter-unit transfers that occurred during month and number of emergency medical leaves that were initiated during month.

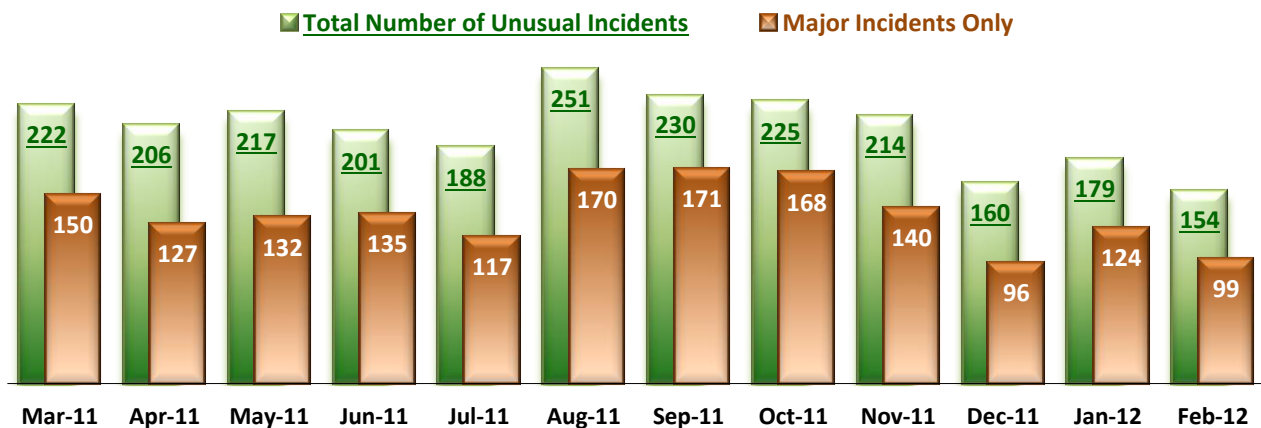
### 5. 30-Day Readmission Rate



\* Percent of discharges that returned to SEH within 30 days of discharges. It does not include those who may have been re-hospitalized at another psychiatric facility. This measure requires 30-day observation following discharge.

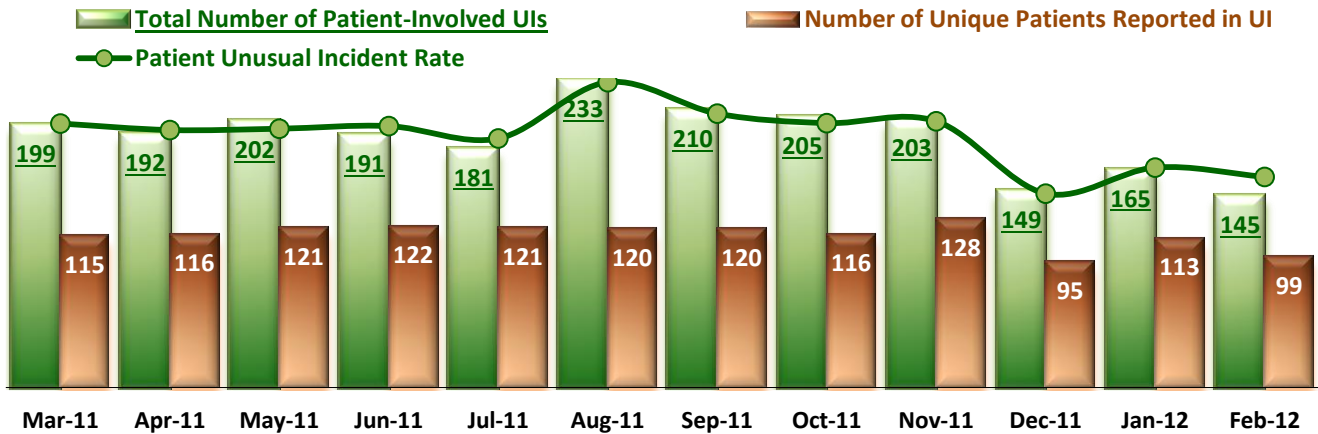
\*\* NPR: National Public Rate as of December 2009 published by NASMHPD Research Institute in May 2010.

### 6. Unusual Incidents



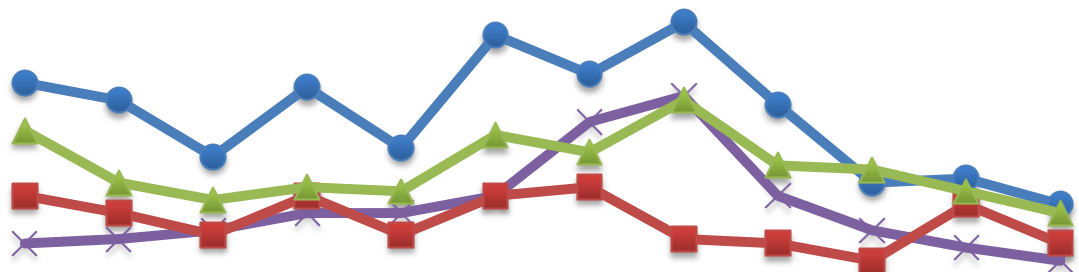
\* Numbers above represent all types of the unusual incidents (UIs) that were reported to the Risk Manager by PRISM publication date, including those that did not involve any patients.

### 7. Patient-Involved Unusual Incidents



\*The total number of patient-involved UIs counts only those incidents that involved at least one or more patients. Some patients may be involved in more than one incident and the number of unique patients does not double count them. The patient UI rate is the number of patient-involved unusual incidents reported for every 1000 inpatient days.

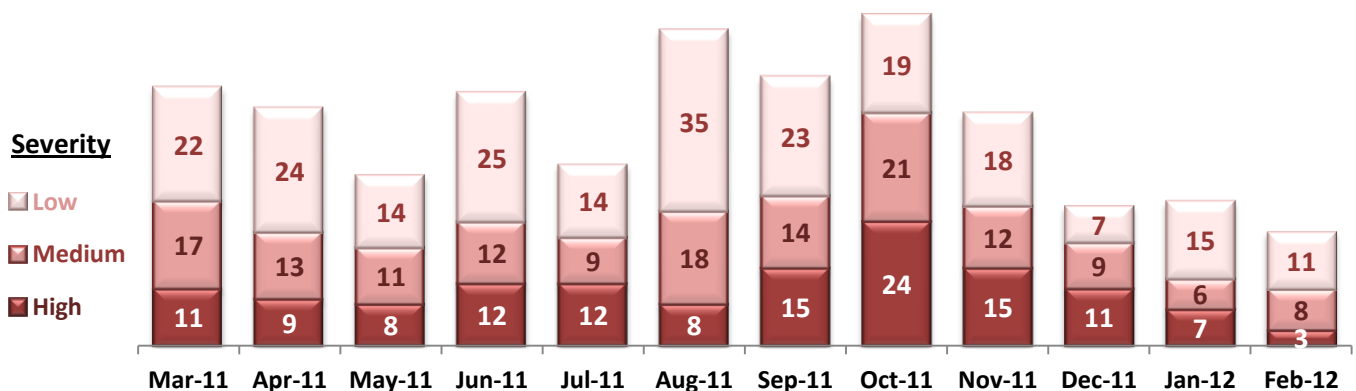
### 8. Selected Types of Incidents



	Mar-11	Apr-11	May-11	Jun-11	Jul-11	Aug-11	Sep-11	Oct-11	Nov-11	Dec-11	Jan-12	Feb-12
Physical Assault	50	46	33	49	35	61	52	64	45	27	28	22
Psych Emergency	13	14	16	20	20	24	41	47	24	16	12	9
Fall	24	20	15	24	15	24	26	14	13	9	22	13
Injury	39	27	23	26	25	38	34	46	31	30	25	20

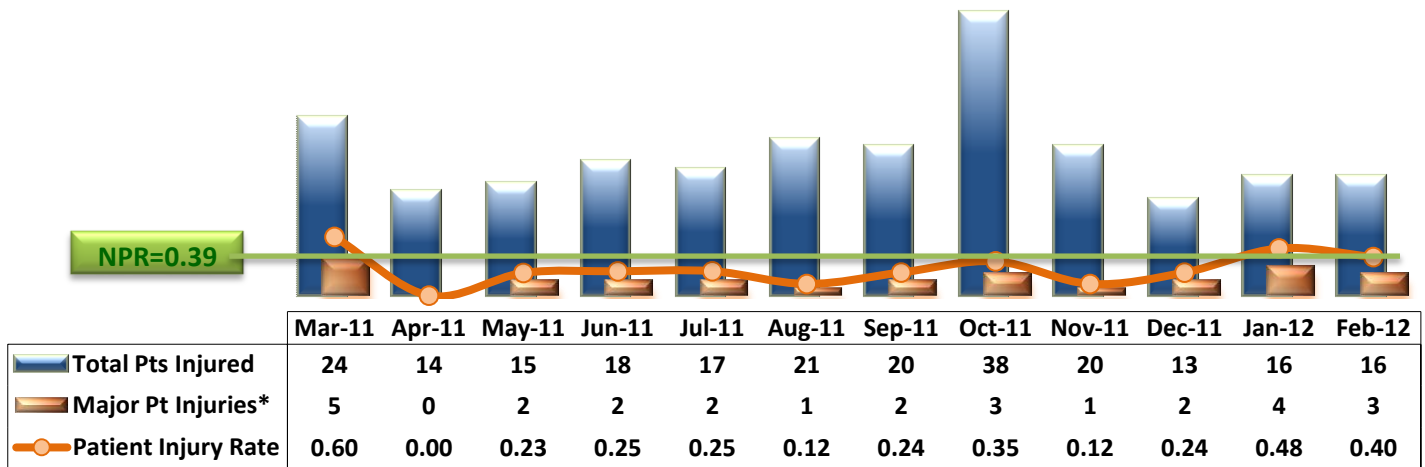
\* These are incident types that are frequently reported. Some incidents may be counted in multiple categories. For example, a physical assault incident that accompanied psychiatric emergency and injury is counted under psychiatric emergency and injury as well as under physical assault. Injury is broadly defined to include any type of injuries regardless of the cause or severity level.

### 9. Physical Assaults by Severity



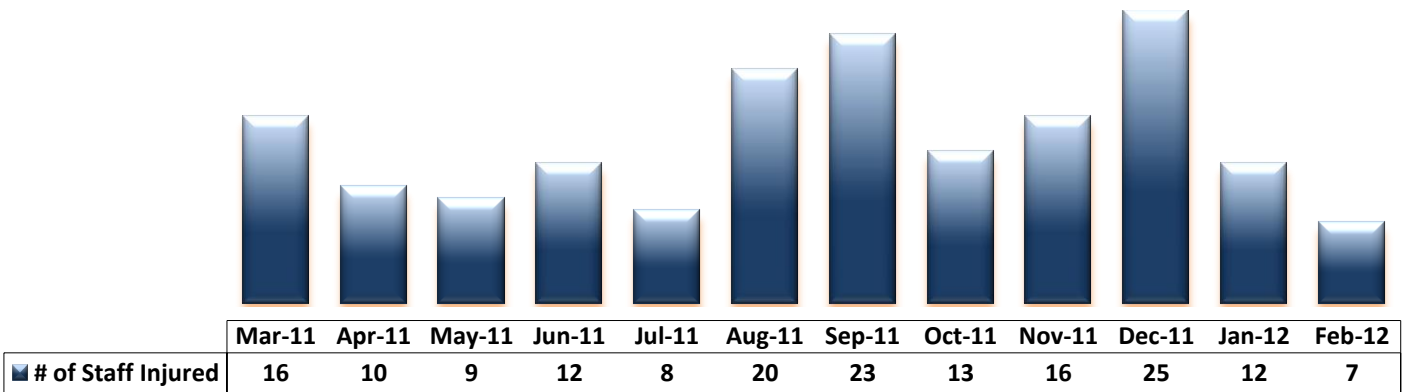
\*Any physical assault that accompanies a code 13 or results in extensive injury needing off-unit treatment or transfer to ER is considered to be high severity, any physical assault that causes a minor injury that can be treated on unit is considered to be medium severity, and physical assault events that result in no injury are considered to be low severity.

### 10. Patient Injuries



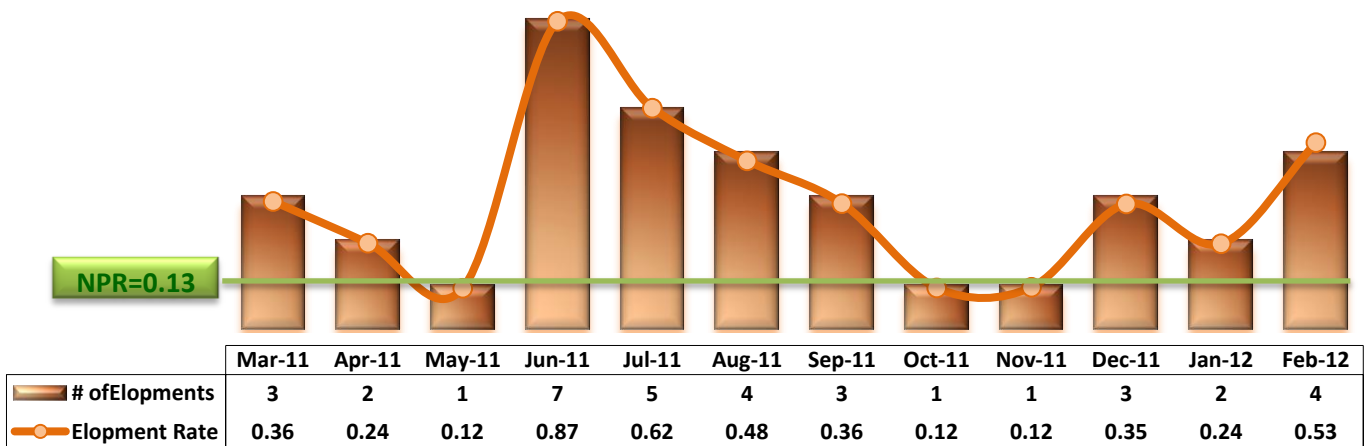
\* Injury is broadly defined to include any type of injuries regardless of the cause or severity level. The total number of patients injured represents all of the reported injuries including minor injuries treated with first aid alone. However, the patient injury rate considers only the number of patient injuries that required beyond first-aid level treatment based on the NRI definition and the patient injury rate is the number of 'major' patient injuries per every 1000 inpatient days

### 11. Staff Injuries



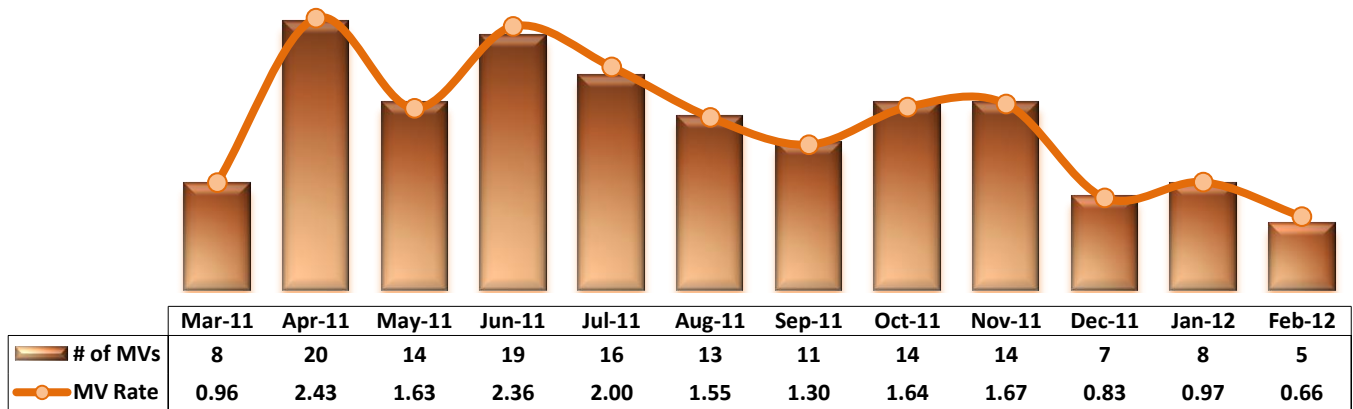
\* Injury is broadly defined to include any type of injuries regardless of the cause or severity level. The total number of staff injured represents all of the reported staff injuries including minor injuries treated with first aid alone.

### 12. Elopements



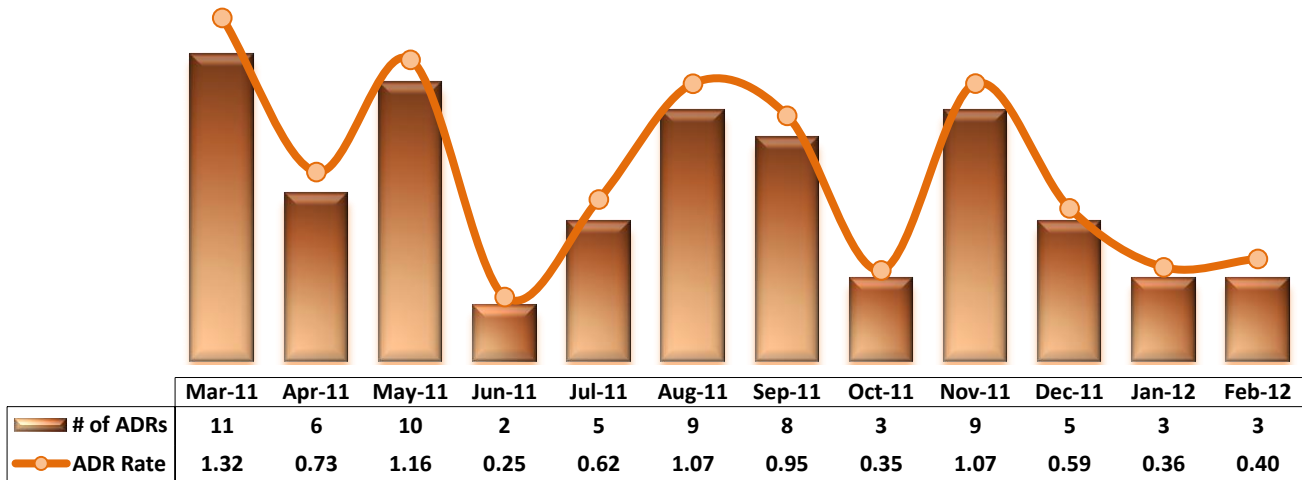
\* It counts the total number of unauthorized leaves for any duration that were initiated during month and were recorded in Avatar. The elopement rate is the number of those unauthorized leaves that occurred for every 1000 inpatient days.

### 13. Reported Medication Variances



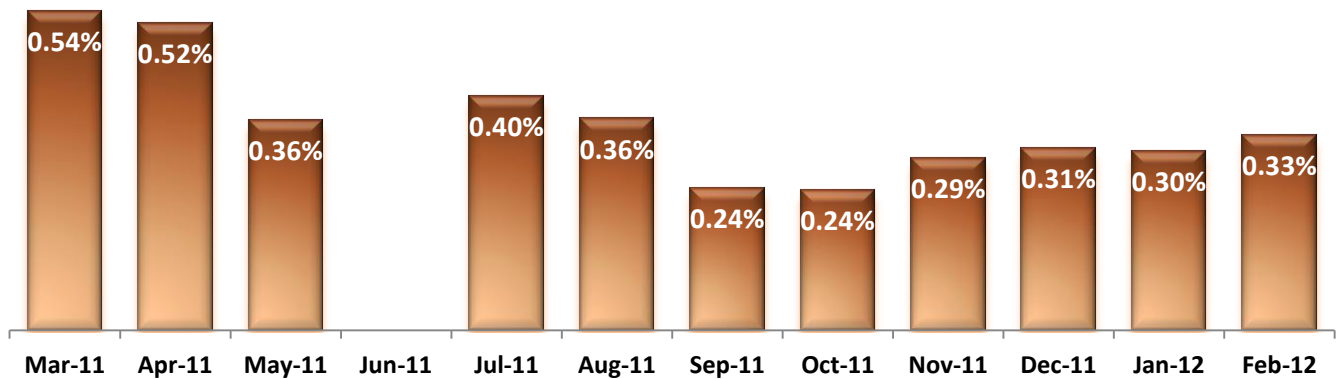
\* MV Rate: Number of reported medication variance events that occurred for every 1000 inpatient days.

### 14. Reported Adverse Drug Reactions



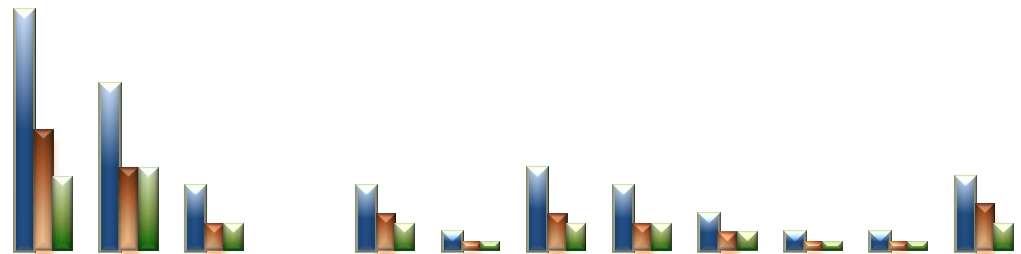
\* ADR Rate: Number of reported adverse drug reaction events that occurred for every 1000 inpatient days.

### 15. Percent of Missing Documentation on Med-Administration



\* June-2011 data is not available because of data tracking interruption caused by a technical glitch in Avatar. September-2011 data does not include administration records associated with new orders placed between 9/22/11 and 9/25/11 due to a technical issue that occurred in Avatar and Worx during that time period.

### 16. Emergency Involuntary Medications Documented in eMar



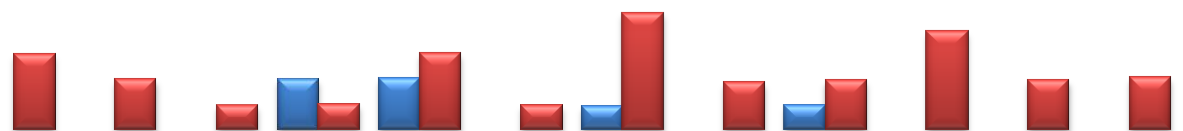
	Mar-11	Apr-11	May-11	Jun-11	Jul-11	Aug-11	Sep-11	Oct-11	Nov-11	Dec-11	Jan-12	Feb-12
Total EIM Orders Administered	26	18	7	0	7	2	9	7	4	2	2	8
Unique EIM Events	13	9	3	0	4	1	4	3	2	1	1	5
Unique Patients Given EIM	8	9	3	0	3	1	3	3	2	1	1	3

\* Some patients may have experienced multiple EIM events during month and some events may have involved multiples doses of medication ordered and administered.

\*\* Unusual incident DB suggests that two EIM events occurred in June 2011 while Avatar eMar recorded none.

\*\*\* Data prior to October 2011 may include 'now' orders in addition to stat emergency orders.

### 17. Percent of Patients Restrained or Secluded



	Mar-11	Apr-11	May-11	Jun-11	Jul-11	Aug-11	Sep-11	Oct-11	Nov-11	Dec-11	Jan-12	Feb-12
Restraint	0.0%	0.0%	0.0%	0.6%	0.7%	0.0%	0.3%	0.0%	0.3%	0.0%	0.0%	0.0%
Seclusion	1.0%	0.6%	0.3%	0.3%	1.0%	0.3%	1.5%	0.6%	0.6%	1.3%	0.6%	0.7%

\* Percent of unique patients who were restrained at least once and percent of unique patients who were secluded at least once. The denominator includes all individuals who were served in care >=1 day during month.

### 18. Restraint Hours Rate & Seclusion Hours Rate



	Mar-11	Apr-11	May-11	Jun-11	Jul-11	Aug-11	Sep-11	Oct-11	Nov-11	Dec-11	Jan-12	Feb-12
Restraint	0.000	0.000	0.000	0.015	0.009	0.000	0.010	0.000	0.001	0.000	0.000	0.000
Seclusion	0.046	0.010	0.005	0.006	0.027	0.005	0.028	0.003	0.030	0.020	0.016	0.016

\* Restraint/Seclusion Hours Rate: Number of hours spent in restraint/seclusion for every 1000 inpatient hours.



## Performance Related Information for Staff &amp; Managers

## 1. Census, Admissions, Discharges &amp; Transfers

Data Source: Avatar

Updated as of 03/12/12

Category		Mar-11	Apr-11	May-11	Jun-11	Jul-11	Aug-11	Sep-11	Oct-11	Nov-11	Dec-11	Jan-12	Feb-12	Monthly Average	Total (12mths)	Figure
Admissions	Civil	19	16	18	8	11	14	16	19	9	19	13	18	15	180	Figure 1
	Forensic	17	22	19	17	23	31	29	19	22	20	16	17	21	252	
	<b>Total</b>	<b>36</b>	<b>38</b>	<b>37</b>	<b>25</b>	<b>34</b>	<b>45</b>	<b>45</b>	<b>38</b>	<b>31</b>	<b>39</b>	<b>29</b>	<b>35</b>	<b>36</b>	<b>432</b>	
Discharges	Civil	19	17	23	14	9	15	21	22	15	13	15	14	16	197	Figure 2
	Forensic	14	12	15	27	22	18	20	21	23	21	33	14	20	240	
	<b>Total</b>	<b>33</b>	<b>29</b>	<b>38</b>	<b>41</b>	<b>31</b>	<b>33</b>	<b>41</b>	<b>43</b>	<b>38</b>	<b>34</b>	<b>48</b>	<b>28</b>	<b>36</b>	<b>437</b>	
Net Gain During Month	Civil	0	-1	-5	-6	2	-1	-5	-3	-6	6	-2	4		-17	
	Forensic	3	10	4	-10	1	13	9	-2	-1	-1	-17	3		12	
	<b>Total</b>	<b>3</b>	<b>9</b>	<b>-1</b>	<b>-16</b>	<b>3</b>	<b>12</b>	<b>4</b>	<b>-5</b>	<b>-7</b>	<b>5</b>	<b>-19</b>	<b>7</b>		<b>-5</b>	
All Individuals on Roll at End of Month		<b>279</b>	<b>288</b>	<b>287</b>	<b>271</b>	<b>274</b>	<b>286</b>	<b>290</b>	<b>285</b>	<b>278</b>	<b>283</b>	<b>264</b>	<b>271</b>	<b>280</b>		
a. Present on Unit		275	280	277	261	263	280	280	279	272	275	259	266	272		
b. On AL		1	5	6	5	7	1	6	3	3	6	3	3	4		
c. On UL		3	3	4	5	4	5	4	3	3	2	2	2	3		
All Individuals on Roll: Daily Average during Month		<b>276</b>	<b>283</b>	<b>286</b>	<b>276</b>	<b>268</b>	<b>278</b>	<b>290</b>	<b>282</b>	<b>286</b>	<b>279</b>	<b>275</b>	<b>269</b>	<b>279</b>		
a. Present on Unit*		<b>268</b>	<b>274</b>	<b>277</b>	<b>268</b>	<b>258</b>	<b>271</b>	<b>282</b>	<b>276</b>	<b>280</b>	<b>273</b>	<b>267</b>	<b>262</b>	<b>271</b>		Figure 3
b. On AL		5	6	5	5	5	3	3	3	3	4	6	5	4		
c. On UL		3	3	4	3	5	4	5	3	3	2	2	2	3		
Patient Days*		<b>8307</b>	<b>8217</b>	<b>8601</b>	<b>8050</b>	<b>8008</b>	<b>8407</b>	<b>8448</b>	<b>8544</b>	<b>8402</b>	<b>8471</b>	<b>8268</b>	<b>7588</b>	<b>8276</b>	<b>99311</b>	
Inter-Unit Transfers during Month		<b>5</b>	<b>8</b>	<b>2</b>	<b>4</b>	<b>4</b>	<b>13</b>	<b>7</b>	<b>10</b>	<b>10</b>	<b>25</b>	<b>5</b>	<b>5</b>	<b>8</b>	<b>98</b>	Figure 4
Medical Leaves Initiated during Month	Emergency	19	26	29	19	18	20	21	31	25	14	19	19	22	260	
	Non-Emer	21	35	15	5	12	15	12	14	12	13	10	17	15	181	
	<b>Total</b>	<b>40</b>	<b>61</b>	<b>44</b>	<b>24</b>	<b>30</b>	<b>35</b>	<b>33</b>	<b>45</b>	<b>37</b>	<b>27</b>	<b>29</b>	<b>36</b>	<b>37</b>	<b>441</b>	
Non-Medical Leaves Initiated during Month		<b>67</b>	<b>60</b>	<b>56</b>	<b>45</b>	<b>63</b>	<b>63</b>	<b>53</b>	<b>64</b>	<b>66</b>	<b>82</b>	<b>91</b>	<b>74</b>	<b>65</b>	<b>784</b>	
UL Initiated during Month		<b>3</b>	<b>2</b>	<b>1</b>	<b>7</b>	<b>5</b>	<b>4</b>	<b>3</b>	<b>1</b>	<b>1</b>	<b>3</b>	<b>2</b>	<b>4</b>	<b>3</b>	<b>36</b>	
Total Unique Patients Served during Month		<b>308</b>	<b>311</b>	<b>324</b>	<b>308</b>	<b>305</b>	<b>319</b>	<b>331</b>	<b>330</b>	<b>315</b>	<b>316</b>	<b>312</b>	<b>298</b>	<b>315</b>		
30 Day Readmission **	Civil	2	2	0	0	0	2	1	5	0	1	1		1	14	
	Forensic	0	0	1	1	0	3	1	1	0	2	1		1	10	
	<b>Total</b>	<b>2</b>	<b>2</b>	<b>1</b>	<b>1</b>	<b>0</b>	<b>5</b>	<b>2</b>	<b>6</b>	<b>0</b>	<b>3</b>	<b>2</b>		<b>2</b>	<b>24</b>	

\* Counts the number of patients who are present on the unit and excludes those on authorized or unauthorized leave at 11:59pm on a given day.

\*\* Number of patients returning within 30 days of discharges that occurred during month.



## Performance Related Information for Staff &amp; Managers

## 2. Key Performance Indicators

Data Source: UI DB, ADR DB, Restraint/Seclusion Log, and Avatar

Updated as of 03/12/12

Category	Mar-11	Apr-11	May-11	Jun-11	Jul-11	Aug-11	Sep-11	Oct-11	Nov-11	Dec-11	Jan-12	Feb-12	Monthly Average	NPR* (Dec-09)	Figure
30 Day Readmit (Discharge Cohort)**	Civil	10.5%	11.8%	0.0%	0.0%	0.0%	13.3%	4.8%	22.7%	0.0%	7.7%	6.7%	7.8%		Figure 5
	Forensic	0.0%	0.0%	6.7%	3.7%	0.0%	16.7%	5.0%	4.8%	0.0%	9.5%	3.0%	4.5%		
	Combined	6.1%	6.9%	2.6%	2.4%	0.0%	15.2%	4.9%	14.0%	0.0%	8.8%	4.2%	6.0%	7.8%	
Number of Unusual Incidents	222	206	217	201	188	251	230	225	214	160	179	154	204		Figure 6
Patient Unusual Incident Rate	23.96	23.37	23.49	23.73	22.60	27.71	24.86	23.99	24.16	17.59	19.96	19.11	22.91		Figure 7
Selected Types of Incidents	Physical Assault	50	46	33	49	35	61	52	64	45	27	28	22	43	Figure 8
	Psych Emergency	13	14	16	20	20	24	41	47	24	16	12	9	21	
	Fall	24	20	15	24	15	24	26	14	13	9	22	13	18	
	Injury***	39	27	23	26	25	38	34	46	31	30	25	20	30	
Physical Assaults by Severity	High	11	9	8	12	12	8	15	24	15	11	7	3	11	Figure 9
	Medium	17	13	11	12	9	18	14	21	12	9	6	8	13	
	Low	22	24	14	25	14	35	23	19	18	7	15	11	19	
Patient Injury Rate***	0.60	0.00	0.23	0.25	0.25	0.12	0.24	0.35	0.12	0.24	0.48	0.40	0.27	0.39	Figure 10
Patients with Major Injuries***	5	0	2	2	2	1	2	3	1	2	4	3	2		
Total Patients Injured***	24	14	15	18	17	21	20	38	20	13	16	16	19		
Total Staff Injured***	16	10	9	12	8	20	23	13	16	25	12	7	14		Figure 11
Elopement Rate	0.36	0.24	0.12	0.87	0.62	0.48	0.36	0.12	0.12	0.35	0.24	0.53	0.46	0.13	Figure 12
Medication Variance Rate	0.96	2.43	1.63	2.36	2.00	1.55	1.30	1.64	1.67	0.83	0.97	0.66	1.50		Figure 13
Adverse Drug Reaction Rate	1.32	0.73	1.16	0.25	0.62	1.07	0.95	0.35	1.07	0.59	0.36	0.40	0.75		Figure 14
Missing Med-Admin Documentation	0.54%	0.52%	0.36%		0.40%	0.36%	0.24%	0.24%	0.29%	0.31%	0.30%	0.33%	0.35%		Figure 15
Emergency Involuntary Meds	26	18	7	0	7	2	9	7	4	2	2	8	8	Figure 16	
Unique EIM Events	13	9	3	0	4	1	4	3	2	1	1	5	4		
Unique Patients given EIM	8	9	3	0	3	1	3	3	2	1	1	3	3		
Percent of Patients Restrained	0.0%	0.0%	0.0%	0.6%	0.7%	0.0%	0.3%	0.0%	0.3%	0.0%	0.0%	0.0%	0.2%	3.6%	Figure 17
Percent of Patients Secluded	1.0%	0.6%	0.3%	0.3%	1.0%	0.3%	1.5%	0.6%	0.6%	1.3%	0.6%	0.7%	0.7%	2.6%	
Restraint Hours Rate	0.000	0.000	0.000	0.015	0.009	0.000	0.010	0.000	0.001	0.000	0.000	0.000	0.003	0.42	Figure 18
Seclusion Hours Rate	0.046	0.010	0.005	0.006	0.027	0.005	0.028	0.003	0.030	0.020	0.016	0.016	0.018	0.55	

\* National Public Rate, NASMHPD Research Institute

\*\* Percentage of patients returning within 30 days of discharges that occurred during month

\*\*\* Injury is broadly defined to include any type of injuries regardless of the cause or severity level. The total number of patients or staff injured represents all of the reported injuries including minor injuries treated with first aid alone. However, the patient injury rate considers only the number of patient injuries that required beyond first-aid level treatment based on the NRI definition and the patient injury rate is the number of 'major' patient injuries per every 1000 inpatient days. The patient major injury data became available in January 2011.

## Performance Related Information for Staff &amp; Managers

## 3. Unusual Incident &amp; Medication

Data Source: UI DB, ADR DB, and Avatar

Updated as of 03/12/12

Category	Mar-11	Apr-11	May-11	Jun-11	Jul-11	Aug-11	Sep-11	Oct-11	Nov-11	Dec-11	Jan-12	Feb-12	Monthly Average	Total (12mths)	NPR* (Dec-09)
Total Unusual Incidents**	222	206	217	201	188	251	230	225	214	160	179	154	204	2447	
Total Major Unusual Incidents	150	127	132	135	117	170	171	168	140	96	124	99	136	1629	
Patient Involved UI Only**	199	192	202	191	181	233	210	205	203	149	165	145	190	2275	
<i>Patient UI Rate</i>	<i>23.96</i>	<i>23.37</i>	<i>23.49</i>	<i>23.73</i>	<i>22.60</i>	<i>27.71</i>	<i>24.86</i>	<i>23.99</i>	<i>24.16</i>	<i>17.59</i>	<i>19.96</i>	<i>19.11</i>	<i>22.91</i>		
Unique Patients Involved in UI**	115	116	121	122	121	120	120	116	128	95	113	99	116	1386	
Selected Types of Incidents															
Physical Assault	50	46	33	49	35	61	52	64	45	27	28	22	43	512	
Psych Emergency	13	14	16	20	20	24	41	47	24	16	12	9	21	256	
Fall	24	20	15	24	15	24	26	14	13	9	22	13	18	219	
Injury	39	27	23	26	25	38	34	46	31	30	25	20	30	364	
Physical Assaults by Severity															
High	11	9	8	12	12	8	15	24	15	11	7	3	11		
Medium	17	13	11	12	9	18	14	21	12	9	6	8	13		
Low	22	24	14	25	14	35	23	19	18	7	15	11	19		
Total Patients Injured***	24	14	15	18	17	21	20	38	20	13	16	16	19	232	
Patients with Major Injuries***	5	0	2	2	2	1	2	3	1	2	4	3	2	27	
<i>Patient Injury Rate***</i>	<i>0.60</i>	<i>0.00</i>	<i>0.23</i>	<i>0.25</i>	<i>0.25</i>	<i>0.12</i>	<i>0.24</i>	<i>0.35</i>	<i>0.12</i>	<i>0.24</i>	<i>0.48</i>	<i>0.40</i>	<i>0.27</i>		<i>0.39</i>
Total Staff Injured**	16	10	9	12	8	20	23	13	16	25	12	7	14		
Total UL Incident Reports	4	3	7	4	5	3	5	4	1	3	2	5	4	46	
Total ULs Documented in Avatar	3	2	1	7	5	4	3	1	1	3	2	4	3		
<i>Elopement Rate</i>	<i>0.36</i>	<i>0.24</i>	<i>0.12</i>	<i>0.87</i>	<i>0.62</i>	<i>0.48</i>	<i>0.36</i>	<i>0.12</i>	<i>0.12</i>	<i>0.35</i>	<i>0.24</i>	<i>0.53</i>	<i>0.46</i>		<i>0.13</i>
Total Medication Variance (MV) Incidents Reported **	8	20	14	19	16	13	11	14	14	7	8	5	12	149	
<i>MV Rate</i>	<i>0.96</i>	<i>2.43</i>	<i>1.63</i>	<i>2.36</i>	<i>2.00</i>	<i>1.55</i>	<i>1.30</i>	<i>1.64</i>	<i>1.67</i>	<i>0.83</i>	<i>0.97</i>	<i>0.66</i>	<i>1.50</i>		
Total Adverse Drug Reactions (ADR) Reported	11	6	10	2	5	9	8	3	9	5	3	3	6	74	
<i>ADR Rate</i>	<i>1.32</i>	<i>0.73</i>	<i>1.16</i>	<i>0.25</i>	<i>0.62</i>	<i>1.07</i>	<i>0.95</i>	<i>0.35</i>	<i>1.07</i>	<i>0.59</i>	<i>0.36</i>	<i>0.40</i>	<i>0.75</i>		
Total Medication Administrations Scheduled	99376	97031	101053		96167	96945	95639	103346	101392	101756	99731	93833		1086269	
Total Missing Documentations	540	507	361		383	349	231	246	297	315	304	311		3844	
<i>Percent of Missing Documentation</i>	<i>0.54%</i>	<i>0.52%</i>	<i>0.36%</i>		<i>0.40%</i>	<i>0.36%</i>	<i>0.24%</i>	<i>0.24%</i>	<i>0.29%</i>	<i>0.31%</i>	<i>0.30%</i>	<i>0.33%</i>		<i>0.35%</i>	
Total Patients with >=3 STATs	33	53	30	18	17	20	24	6	6	2	3	5	18		
Total STAT Orders								40	42	14	23	44	33		
Emergency STAT Med Orders Administered Involuntarily (EIM)	26	18	7	0	7	2	9	7	4	2	2	8	8		
Unique EIM Events	13	9	3	0	4	1	4	3	2	1	1	5	4		
Unique Patients given EIM	8	9	3	0	3	1	3	3	2	1	1	3	3		

\* National Public Rate, NASMHPD Research Institute

\*\* Numbers may change if any additional UI report is made after the data run date from UI database (around the 15th of the following month).

\*\*\* Avatar report that indicates the number of patients with 3 or more STATs was unavailable at report run time

## Performance Related Information for Staff &amp; Managers

## 4. Restraint &amp; Seclusion

Data Source: Restraint/Seclusion Log and UI DB (for # of total events and patients) and Avatar (for patient days/hours)

Updated as of 03/12/12

Category	Mar-11	Apr-11	May-11	Jun-11	Jul-11	Aug-11	Sep-11	Oct-11	Nov-11	Dec-11	Jan-12	Feb-12	Monthly Average	Total (12mths)	NPR* (Dec-09)
Number of Restraint Events	0	0	0	2	2	0	1	0	1	0	0	0	0.5	6	
Number of Unique Patients Restrained	0	0	0	2	2	0	1	0	1	0	0	0	0.5		
Percentage of Patients Restrained	0.0%	0.0%	0.0%	0.6%	0.7%	0.0%	0.3%	0.0%	0.3%	0.0%	0.0%	0.0%	0.2%		3.6%
Total Restraint Hours (h:mm)	0:00	0:00	0:00	2:50	1:45	0:00	2:00	0:00	0:15	0:00	0:00	0:00	0:34	6:50	
Restraint Hours Rate	0.000	0.000	0.000	0.015	0.009	0.000	0.010	0.000	0.001	0.000	0.000	0.000	0.003		0.42
Number of Seclusion Events	5	2	1	1	3	1	6	2	5	5	2	2	2.9	35	
Number of Unique Patients Secluded	3	2	1	1	3	1	5	2	2	4	2	2	2.3		
Percentage of Patients Secluded	1.0%	0.6%	0.3%	0.3%	1.0%	0.3%	1.5%	0.6%	0.6%	1.3%	0.6%	0.7%	0.7%		2.6%
Total Seclusion Hours (h:mm)	9:15	2:00	1:00	1:11	5:10	1:00	5:37	0:35	6:04	4:10	3:13	3:00	3:31	42:15	
Seclusion Hours Rate	0.046	0.010	0.005	0.006	0.027	0.005	0.028	0.003	0.030	0.020	0.016	0.016	0.018		0.55

\* National Public Rate, NASMHPD Research Institute

## Performance Related Information for Staff &amp; Managers

## 5. Major Incidents by Incident Location/Unit

Data Source: UI DB

Updated as of 03/12/12

Category		Mar-11	Apr-11	May-11	Jun-11	Jul-11	Aug-11	Sep-11	Oct-11	Nov-11	Dec-11	Jan-12	Feb-12	Monthly Average	Total (12mths)	Percent	
<b>Total Unusual Incidents</b>		<b>222</b>	<b>206</b>	<b>217</b>	<b>201</b>	<b>188</b>	<b>251</b>	<b>230</b>	<b>225</b>	<b>214</b>	<b>160</b>	<b>179</b>	<b>154</b>	<b>204</b>	<b>2447</b>		
<b>Total Major Incidents*</b>		<b>150</b>	<b>127</b>	<b>132</b>	<b>135</b>	<b>117</b>	<b>170</b>	<b>171</b>	<b>168</b>	<b>140</b>	<b>96</b>	<b>124</b>	<b>99</b>	<b>136</b>	<b>1629</b>	<b>100%</b>	
Major Incident Location	1A	11	13	16	7	9	18	16	13	12	11	13	11	13	150	9%	
	1B	12	8	25	16	18	19	24	16	14	8	14	12	16	186	11%	
	1C	9	9	3	11	4	10	8	7	1	6	8	3	7	79	5%	
	1D	15	14	10	11	5	4	15	29	20	11	9	6	12	149	9%	
	1E	21	21	24	15	20	23	29	27	10	8	8	7	18	213	13%	
	1F	9	8	11	10	9	3	19	14	17	10	5	10	10	125	8%	
	1G	12	14	4	6	10	22	16	24	17	7	11	8	13	151	9%	
	2A	4	2	2	3	0	5	3	2	4	3	3	4	3	35	2%	
	2B	0	3	2	0	2	1	2	3	2	1	3	2	2	21	1%	
	2C	19	7	11	11	6	8	4	6	13	7	8	6	9	106	7%	
	2D	7	7	6	11	11	21	9	3	11	6	12	8	9	112	7%	
	ANXA/B	-	-	-	-	-	-	-	-	-	-	-	-	-	0	0%	
	TLC	17	11	7	19	12	16	11	9	13	9	12	14	13	150	9%	
	Other	14	10	11	15	11	20	15	15	15	6	9	18	8	13	152	9%
<b>Total Physical Assault Incidents</b>		<b>50</b>	<b>46</b>	<b>33</b>	<b>49</b>	<b>35</b>	<b>61</b>	<b>52</b>	<b>64</b>	<b>45</b>	<b>27</b>	<b>28</b>	<b>22</b>	<b>43</b>	<b>512</b>	<b>100%</b>	
Assault Incident Location	1A	1	3	3	1	4	5	6	4	2	4	1	0	3	34	7%	
	1B	2	1	3	2	3	6	0	2	0	1	1	0	2	21	4%	
	1C	2	3	0	6	1	2	2	2	0	2	4	0	2	24	5%	
	1D	11	8	5	6	1	0	5	15	11	5	4	4	6	75	15%	
	1E	8	13	8	5	8	11	11	8	4	3	0	5	7	84	16%	
	1F	3	3	4	4	2	2	7	6	7	3	0	1	4	42	8%	
	1G	7	5	0	3	5	8	9	17	10	4	4	4	6	76	15%	
	2A	1	0	1	0	0	0	0	0	0	0	0	1	0	3	1%	
	2B	0	0	1	0	1	0	1	0	1	0	0	0	0	4	1%	
	2C	3	0	3	8	1	4	1	3	3	0	2	0	2	28	5%	
	2D	4	3	1	4	7	10	4	1	5	1	6	4	4	50	10%	
	ANXA/B	-	-	-	-	-	-	-	-	-	-	-	-	-	0	0%	
	TLC	7	5	4	5	2	9	3	5	5	2	3	4	3	4	52	10%
	Other	1	2	0	5	0	4	3	1	0	1	2	0	2	19	4%	

## Performance Related Information for Staff &amp; Managers

## 5. Major Incidents by Incident Location/Unit

Data Source: UI DB

Updated as of 03/12/12

Category	Mar-11	Apr-11	May-11	Jun-11	Jul-11	Aug-11	Sep-11	Oct-11	Nov-11	Dec-11	Jan-12	Feb-12	Monthly Average	Total (12mths)	Percent
<b>Total Fall Incidents</b>	<b>24</b>	<b>20</b>	<b>15</b>	<b>24</b>	<b>15</b>	<b>24</b>	<b>26</b>	<b>14</b>	<b>13</b>	<b>9</b>	<b>22</b>	<b>13</b>	<b>18</b>	<b>219</b>	<b>100%</b>
Fall Incident Location															
1A	7	5	1	5	5	4	3	4	5	1	6	3	4	49	22%
1B	1	2	1	3	5	4	13	4	0	2	1	3	3	39	18%
1C	2	1	1	0	0	3	0	1	0	0	1	1	1	10	5%
1D	0	2	2	2	2	0	1	0	1	0	1	0	1	11	5%
1E	0	0	3	0	0	2	1	0	2	0	2	1	1	11	5%
1F	1	0	1	0	0	0	2	1	1	0	0	0	1	6	3%
1G	2	0	0	0	0	0	1	1	0	0	0	0	0	4	2%
2A	1	1	0	0	0	1	0	0	1	0	1	0	0	5	2%
2B	0	1	0	0	0	1	0	0	0	1	2	1	1	6	3%
2C	3	2	2	1	0	0	1	0	0	0	2	0	1	11	5%
2D	0	2	0	2	1	5	1	1	1	1	1	0	1	15	7%
ANXA/B	-	-	-	-	-	-	-	-	-	-	-	-	-	0	0%
TLC	4	3	2	9	2	3	1	1	1	2	0	4	3	32	15%
Other	3	1	2	2	0	1	2	1	1	2	5	0	2	20	9%
<b>Total Injury Incidents</b>	<b>39</b>	<b>27</b>	<b>23</b>	<b>26</b>	<b>25</b>	<b>38</b>	<b>34</b>	<b>46</b>	<b>31</b>	<b>30</b>	<b>25</b>	<b>20</b>	<b>30</b>	<b>364</b>	<b>100%</b>
Injury Incident Location															
1A	3	3	2	1	4	6	3	3	3	3	2	3	3	36	10%
1B	4	2	6	1	3	2	4	3	0	0	2	0	2	27	7%
1C	1	2	1	1	1	3	0	2	0	1	2	0	1	14	4%
1D	6	3	2	4	1	0	3	8	5	5	2	3	4	42	12%
1E	3	2	5	3	1	6	6	9	4	4	1	2	4	46	13%
1F	3	1	3	3	2	0	4	3	6	4	4	1	3	34	9%
1G	5	4	0	0	0	5	3	8	4	3	1	5	3	38	10%
2A	1	0	0	0	0	0	0	1	0	0	0	0	0	2	1%
2B	0	0	0	0	1	1	0	0	1	0	1	0	0	4	1%
2C	6	1	0	1	4	4	1	1	2	1	1	1	2	23	6%
2D	1	2	1	2	3	2	4	1	4	1	2	0	2	23	6%
ANXA/B	-	-	-	-	-	-	-	-	-	-	-	-	-	0	0%
TLC	5	6	1	5	4	2	1	4	1	2	0	4	3	35	10%
Other	1	1	2	5	1	7	5	3	1	6	7	1	3	40	11%

\* Not every incident is a major incident. This counts only those major incidents that required extensive investigations from the risk manager.

- Annex A/B Closed in February 2011. All patients were transferred to other units.

## Performance Related Information for Staff &amp; Managers

## 6. Demographic Information of Individuals in Care

Data Source: Avatar

Updated as of 03/12/12

Category	Sub-group	Mar-11	Apr-11	May-11	Jun-11	Jul-11	Aug-11	Sep-11	Oct-11	Nov-11	Dec-11	Jan-12	Feb-12	Monthly Average	Percent*
<b>Total Active (on Roll) at End of Month*</b>		<b>279</b>	<b>288</b>	<b>287</b>	<b>271</b>	<b>274</b>	<b>286</b>	<b>290</b>	<b>285</b>	<b>278</b>	<b>283</b>	<b>264</b>	<b>271</b>	<b>280</b>	
<b>Gender</b>	Female	67	69	72	59	58	68	69	64	60	63	60	68	<b>65</b>	<b>23.2%</b>
	Male	212	219	215	212	216	218	221	221	218	220	204	203	<b>215</b>	<b>76.8%</b>
<b>Age</b>	<b>Median Age (Years)</b>	<b>55 yrs</b>	<b>55 yrs</b>	<b>55 yrs</b>	<b>55 yrs</b>	<b>55 yrs</b>	<b>54 yrs</b>	<b>55 yrs</b>	<b>55 yrs</b>	<b>55 yrs</b>	<b>54 yrs</b>	<b>55 yrs</b>	<b>55 yrs</b>	<b>55 yrs</b>	
	<30 years old	15	19	20	18	18	18	24	24	27	20	13	14	<b>19</b>	<b>6.9%</b>
	>=30 and <40 years old	27	29	30	23	24	27	21	21	20	28	29	33	<b>26</b>	<b>9.3%</b>
	>=40 and <50 years old	49	47	47	45	48	53	52	53	48	51	45	46	<b>49</b>	<b>17.4%</b>
	>=50 and <60 years old	108	113	111	107	105	108	107	106	106	103	102	95	<b>105</b>	<b>37.6%</b>
	>=60 years old	80	80	79	78	79	80	86	81	81	80	81	82	<b>81</b>	<b>28.8%</b>
<b>Legal Status of Individuals on Roll at End of Month</b>	Emergency	21	22	15	14	18	20	15	16	16	19	19	25	<b>18</b>	<b>6.6%</b>
	Inpatient Commitment	31	30	30	33	32	32	31	32	27	27	27	27	<b>30</b>	<b>10.7%</b>
	Outpatient Commitment	29	28	30	26	25	26	28	22	24	27	22	22	<b>26</b>	<b>9.2%</b>
	Voluntary	40	41	41	40	41	38	41	40	39	39	42	41	<b>40</b>	<b>14.4%</b>
	Non-Protesting	1	1	1	1	1	1	0	0	0	0	0	0	<b>1</b>	<b>0.2%</b>
	<b>Civil Sub-total</b>	<b>122</b>	<b>122</b>	<b>117</b>	<b>114</b>	<b>117</b>	<b>117</b>	<b>115</b>	<b>110</b>	<b>106</b>	<b>112</b>	<b>110</b>	<b>115</b>	<b>115</b>	<b>41.0%</b>
	DC Exam	41	49	51	38	44	54	61	61	60	63	49	50	<b>52</b>	<b>18.5%</b>
	Mentally Incompetent	2	4	4	3	3	4	3	3	3	2	3	2	<b>3</b>	<b>1.1%</b>
	NGBRI - DC	98	96	96	98	93	95	94	95	93	91	88	89	<b>94</b>	<b>33.6%</b>
	NGBRI - US	9	10	12	12	12	11	12	11	11	10	10	11	<b>11</b>	<b>3.9%</b>
NGBRI - VI	2	2	2	2	1	1	1	1	1	1	1	1	<b>1</b>	<b>0.5%</b>	
Dual Commitment	1	1	1	1	1	1	1	1	1	1	1	1	<b>1</b>	<b>0.4%</b>	
Sexual Psychopath (Miller Ac)	4	4	4	3	3	3	3	3	3	3	2	2	<b>3</b>	<b>1.1%</b>	
<b>Forensic Sub-total</b>	<b>157</b>	<b>166</b>	<b>170</b>	<b>157</b>	<b>157</b>	<b>169</b>	<b>175</b>	<b>175</b>	<b>172</b>	<b>171</b>	<b>154</b>	<b>156</b>	<b>165</b>	<b>59.0%</b>	
<b>Length of Stay</b>	<b>Median LOS (Days)</b>	<b>994 d</b>	<b>923 d</b>	<b>949 d</b>	<b>1073 d</b>	<b>1043 d</b>	<b>856 d</b>	<b>844 d</b>	<b>884 d</b>	<b>915 d</b>	<b>876 d</b>	<b>977 d</b>	<b>950 d</b>	<b>940 d</b>	
	<b>Average LOS (Days)</b>	<b>3192 d</b>	<b>3069 d</b>	<b>3093 d</b>	<b>3261 d</b>	<b>3194 d</b>	<b>3033 d</b>	<b>2978 d</b>	<b>2988 d</b>	<b>3053 d</b>	<b>2977 d</b>	<b>3150 d</b>	<b>3089 d</b>	<b>3090 d</b>	
	<30 Days	33	34	30	22	33	39	39	30	29	33	27	32	<b>32</b>	<b>11.4%</b>
	>=30 ~ <365 Days	62	68	72	69	61	68	72	78	77	79	68	69	<b>70</b>	<b>25.1%</b>
	>= 1 Year & < 2 Years	28	32	29	25	27	25	24	22	20	20	22	21	<b>25</b>	<b>8.8%</b>
	>= 2 Years & < 5 Years	44	40	43	43	43	45	46	46	43	42	39	40	<b>43</b>	<b>15.3%</b>
	>= 5 Years & < 20 Years	64	67	65	64	63	62	61	61	62	63	63	64	<b>63</b>	<b>22.6%</b>
>= 20 Years	48	47	48	48	47	47	48	48	47	46	45	45	<b>47</b>	<b>16.8%</b>	

\* Counts the total number of individuals who are on the hospital roll at end of each month. This number serves as denominator to calculate percentage of each group.