

**Government of the District of Columbia
Department of Mental Health (DMH)**



Performance Related Information for Staff and Managers

PRISM

JANUARY 2012

Table of Contents

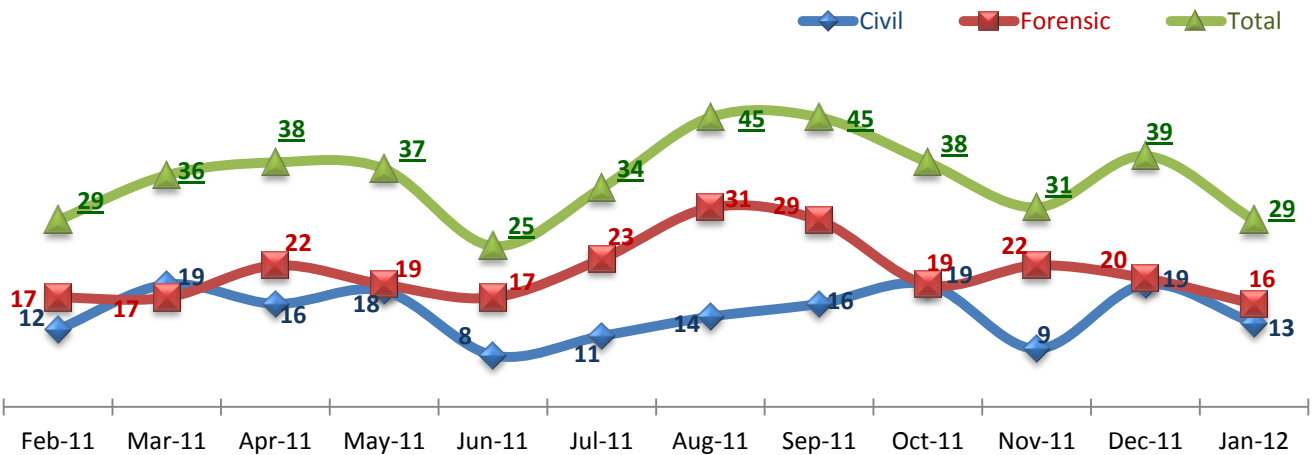


1.	Admissions to SEH	1
2.	Discharges from SEH.....	1
3.	Average Daily Census	1
4.	Transfers	2
5.	30-Day Readmission Rate	2
6.	Unusual Incidents.....	2
7.	Patient-Involved Unusual Incidents.....	3
8.	Selected Types of Incidents	3
9.	Physical Assaults by Severity	3
10.	Patient Injuries	4
11.	Staff Injuries	4
12.	Elopements	4
13.	Reported Medication Variances	5
14.	Reported Adverse Drug Reactions	5
15.	Percent of Missing Documentation on Med-Administration.....	5
16.	Emergency Involuntary Medications Documented in eMar	6
17.	Percent of Patients Restrained or Secluded	6
18.	Restraint Hours Rate & Seclusion Hours Rate	6
<input type="checkbox"/>	<i>Appendix 1) Table – Census, Admissions & Discharges</i>	
<input type="checkbox"/>	<i>Appendix 2) Table – Key Performance Indicators</i>	
<input type="checkbox"/>	<i>Appendix 3) Table – Unusual Incident & Medication</i>	
<input type="checkbox"/>	<i>Appendix 4) Table – Restraint & Seclusion</i>	
<input type="checkbox"/>	<i>Appendix 5) Table – Major Incidents by Incident Location/Unit</i>	
<input type="checkbox"/>	<i>Appendix 6) Table – Demographic Information of Individuals in Care</i>	

2/15/2012

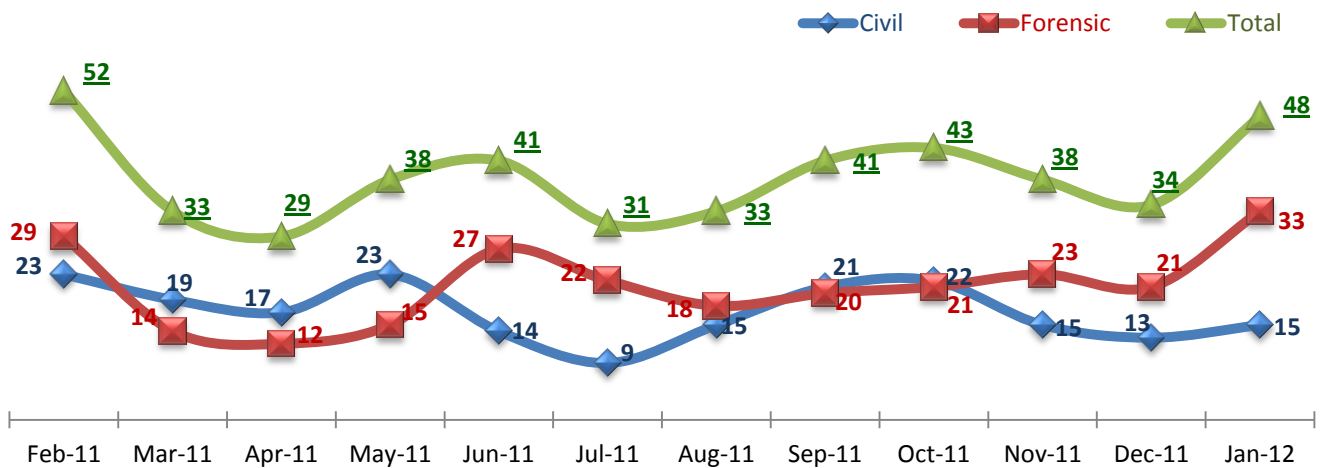
Office of Statistics and Reporting (OSR)

1. Admissions to SEH



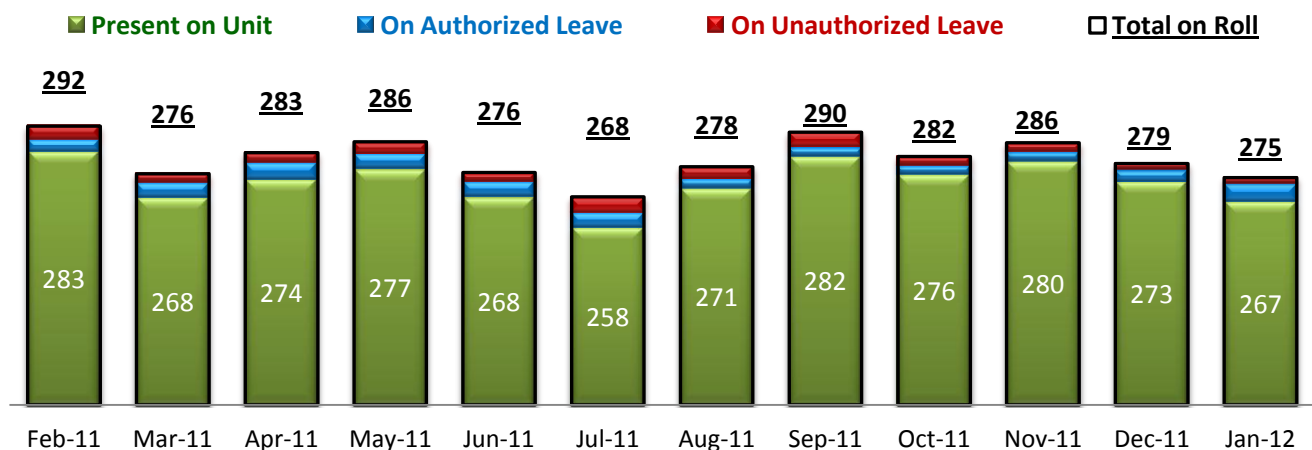
* Number of admissions to SEH inpatient program, including transfers from outpatient to inpatient program.

2. Discharges from SEH



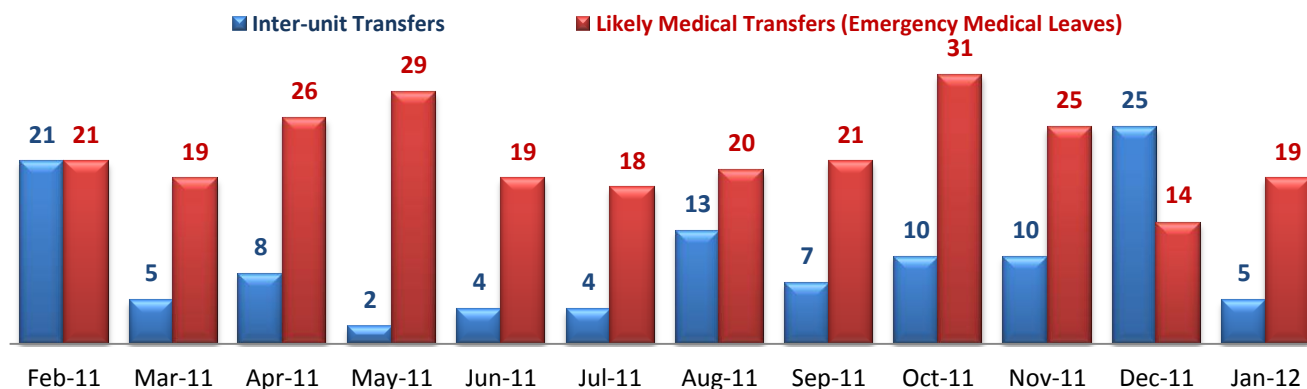
* Number of discharges from SEH inpatient program, including transfers from inpatient to outpatient program.

3. Average Daily Census



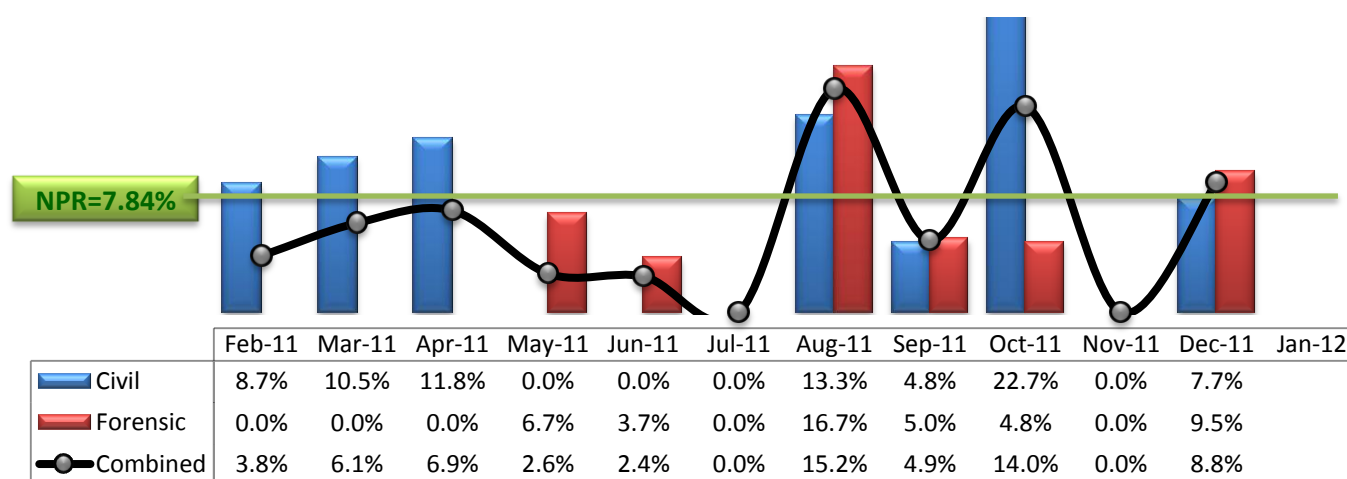
* Data above is the daily average number of individuals counted at 11:59 PM every day during each month.

4. Transfers



* Number of inter-unit transfers that occurred during month and number of emergency medical leaves that were initiated during month.

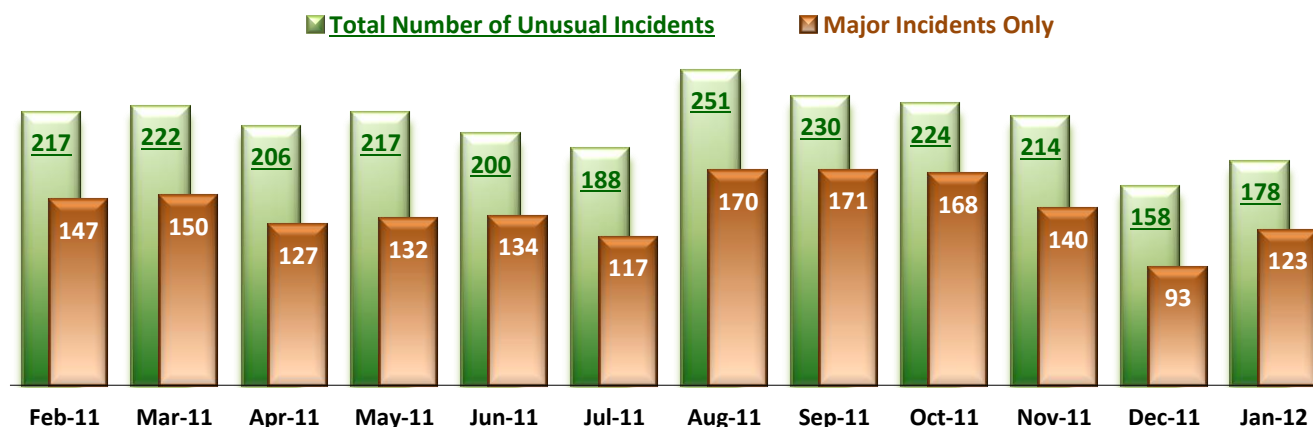
5. 30-Day Readmission Rate



* Percent of discharges that returned to SEH within 30 days of discharges. It does not include those who may have been re-hospitalized at another psychiatric facility. This measure requires 30-day observation following discharge.

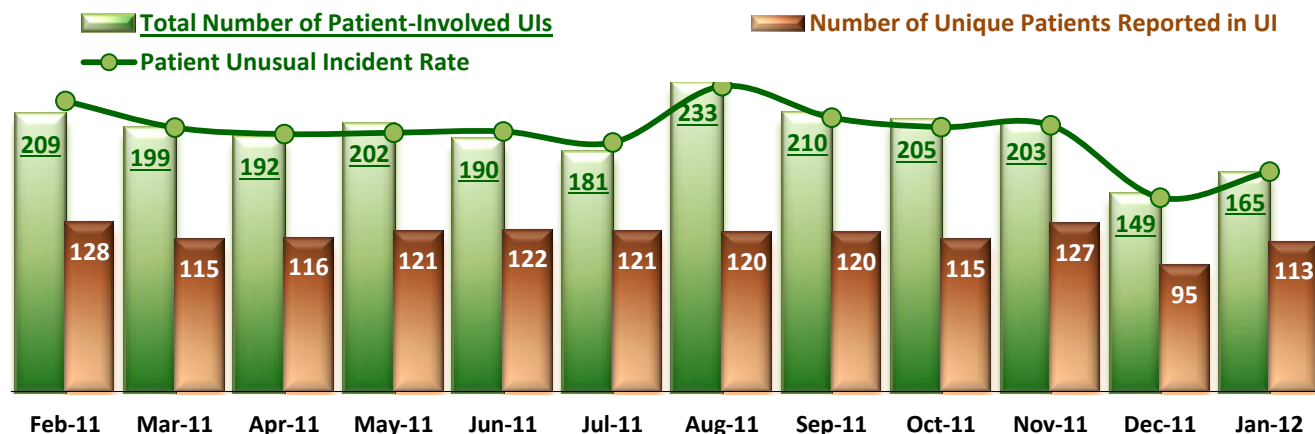
** NPR: National Public Rate as of December 2009 published by NASMHPD Research Institute in May 2010.

6. Unusual Incidents



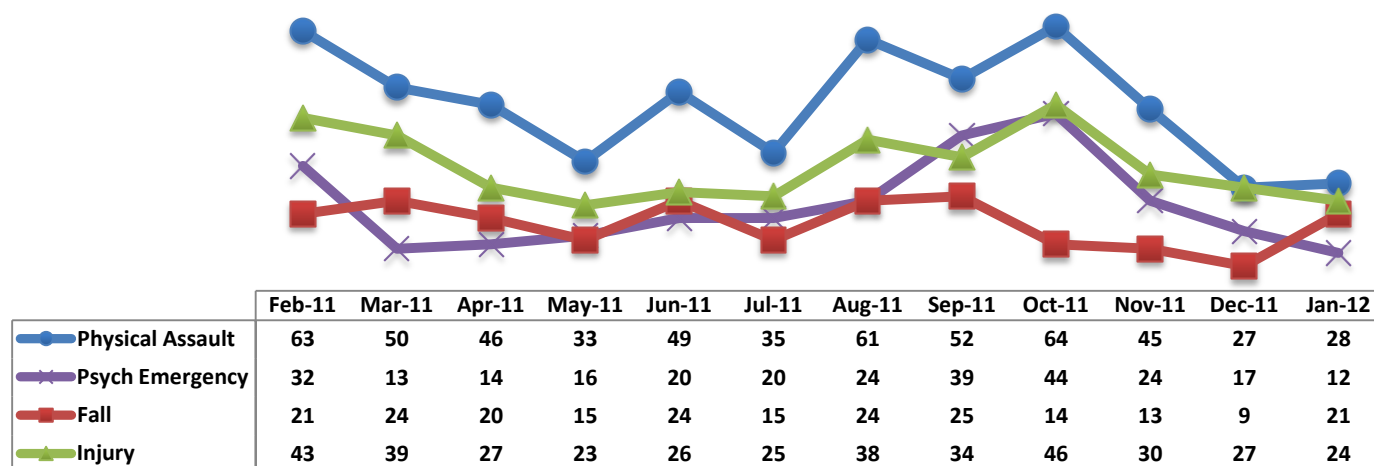
* Numbers above represent all types of the unusual incidents (UIs) that were reported to the Risk Manager by PRISM publication date, including those that did not involve any patients.

7. Patient-Involved Unusual Incidents



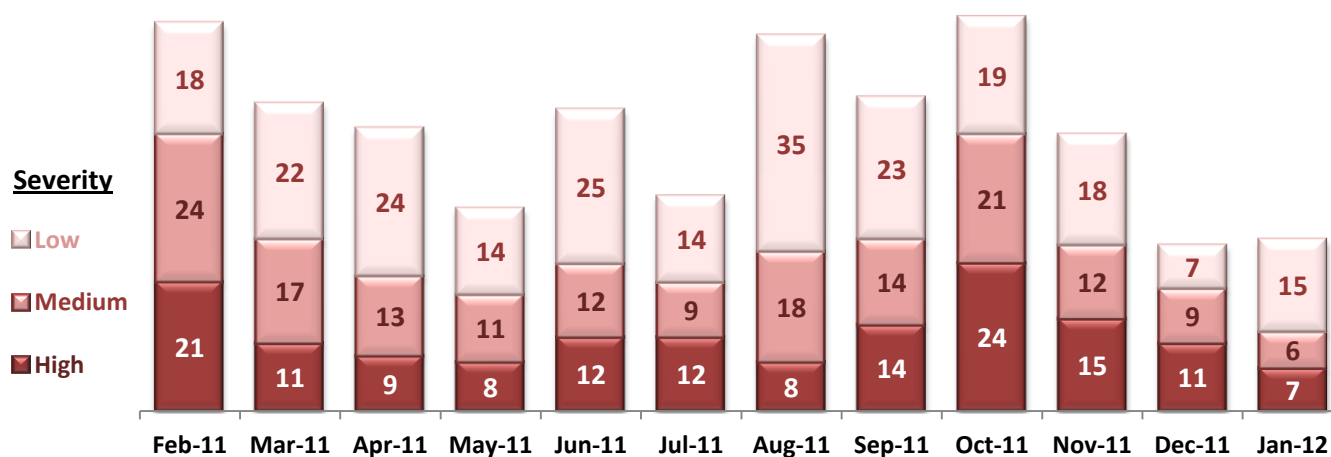
*The total number of patient-involved UIs counts only those incidents that involved at least one or more patients. Some patients may be involved in more than one incident and the number of unique patients does not double count them. The patient UI rate is the number of patient-involved unusual incidents reported for every 1000 inpatient days.

8. Selected Types of Incidents

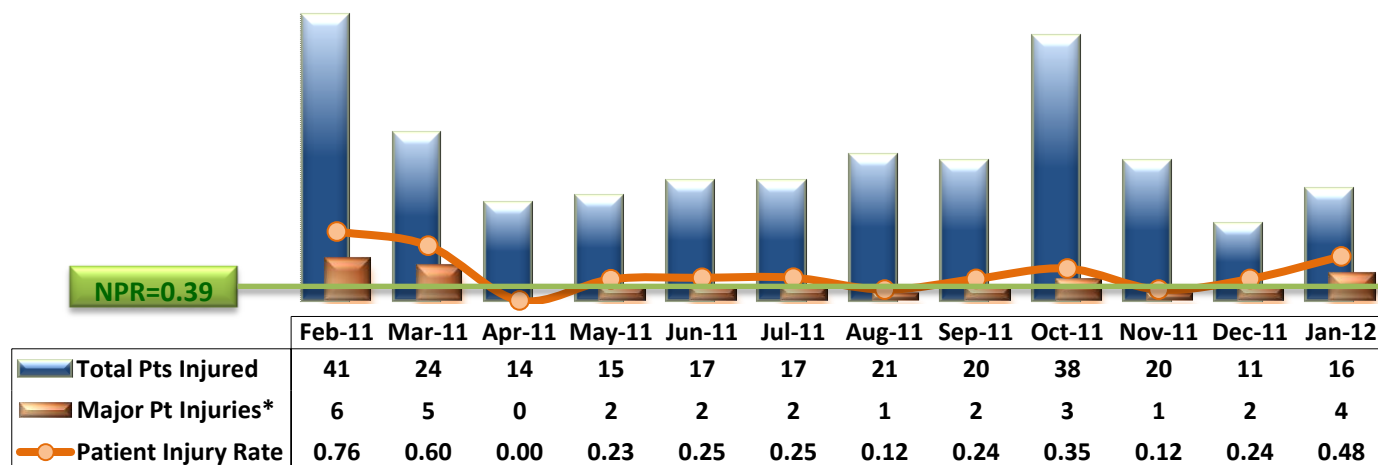


* These are incident types that are frequently reported. Some incidents may be counted in multiple categories. For example, a physical assault incident that accompanied psychiatric emergency and injury is counted under psychiatric emergency and injury as well as under physical assault. Injury is broadly defined to include any type of injuries regardless of the cause or severity level.

9. Physical Assaults by Severity

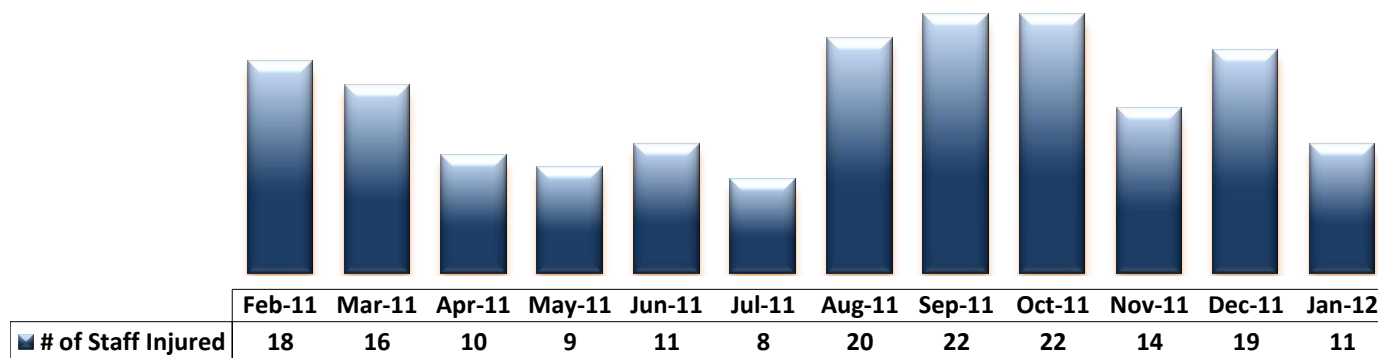


10. Patient Injuries



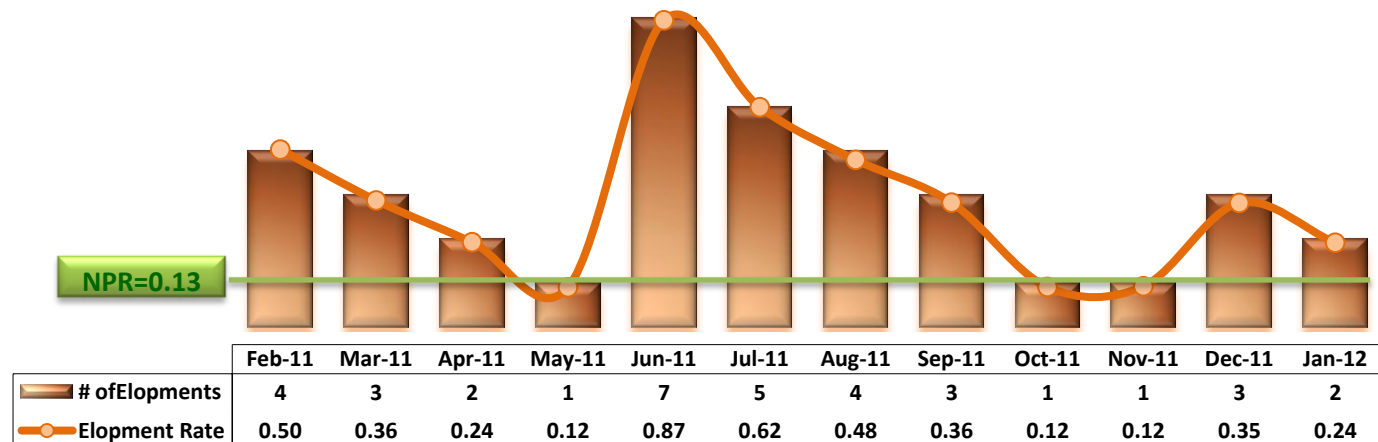
* Injury is broadly defined to include any type of injuries regardless of the cause or severity level. The total number of patients injured represents all of the reported injuries including minor injuries treated with first aid alone. However, the patient injury rate considers only the number of patient injuries that required beyond first-aid level treatment based on the NRI definition and the patient injury rate is the number of 'major' patient injuries per every 1000 inpatient days

11. Staff Injuries



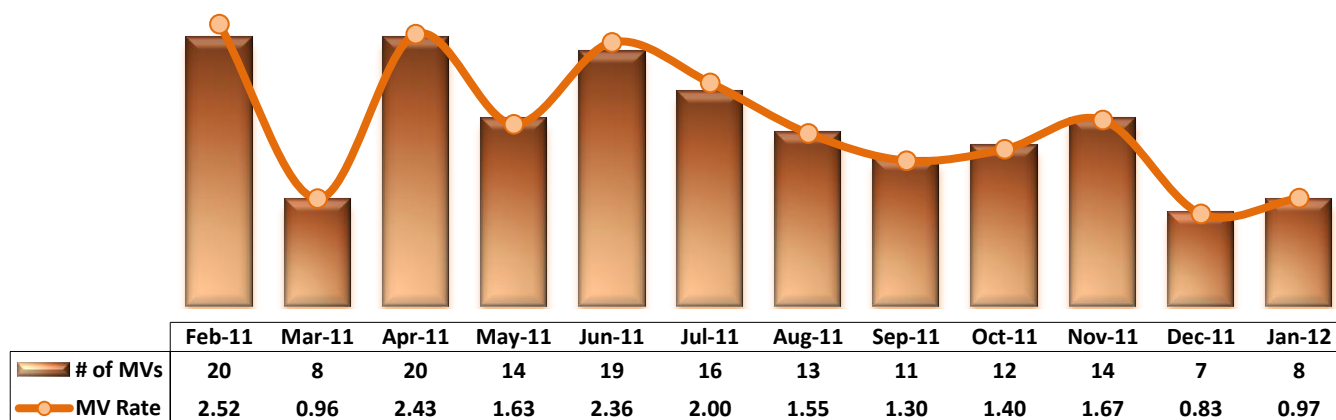
* Injury is broadly defined to include any type of injuries regardless of the cause or severity level. The total number of staff injured represents all of the reported staff injuries including minor injuries treated with first aid alone.

12. Elopements



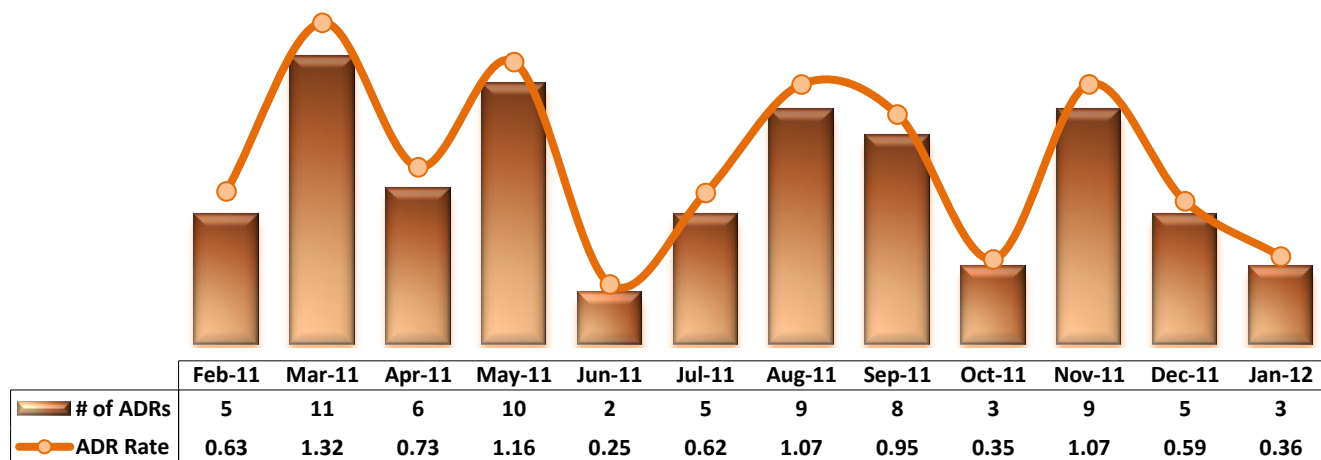
* It counts the total number of unauthorized leaves for any duration that were initiated during month and were recorded in Avatar. The elopement rate is the number of those unauthorized leaves that occurred for every 1000 inpatient days.

13. Reported Medication Variances



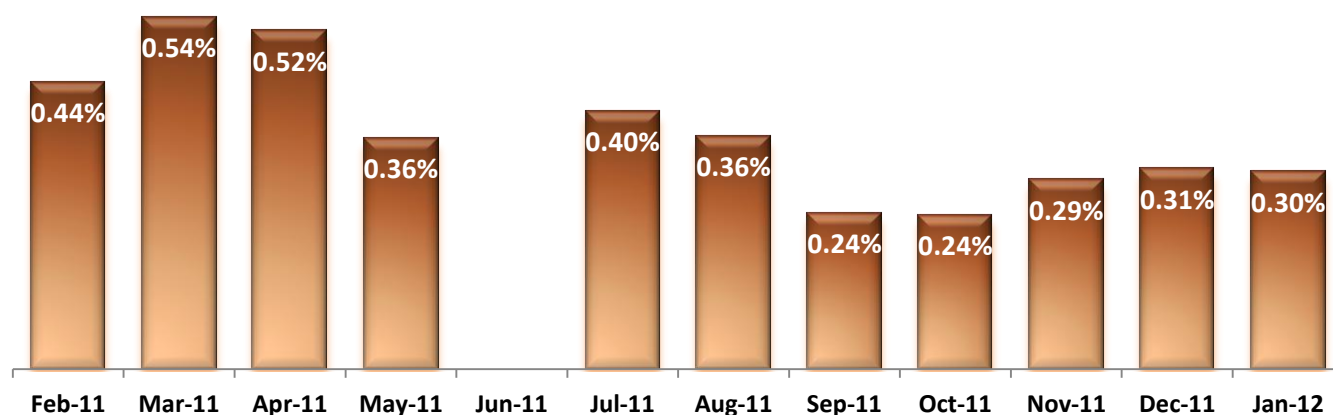
* MV Rate: Number of reported medication variance events that occurred for every 1000 inpatient days.

14. Reported Adverse Drug Reactions



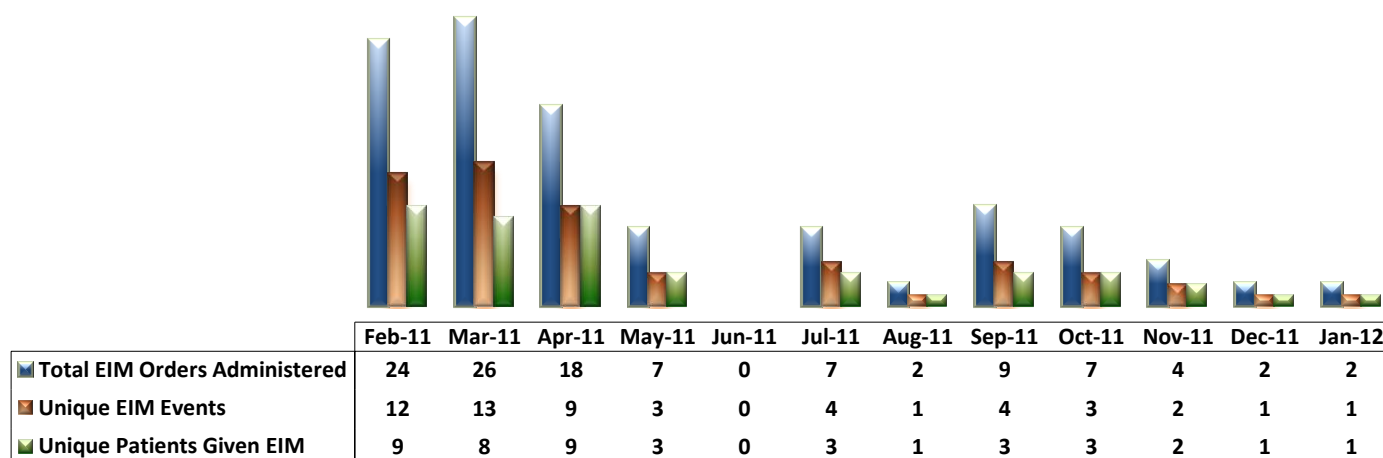
* ADR Rate: Number of reported adverse drug reaction events that occurred for every 1000 inpatient days.

15. Percent of Missing Documentation on Med-Administration



* June-2011 data is not available because of data tracking interruption caused by a technical glitch in Avatar. September-2011 data does not include administration records associated with new orders placed between 9/22/11 and 9/25/11 due to a technical issue that occurred in Avatar and Worx during that time period.

16. Emergency Involuntary Medications Documented in eMar

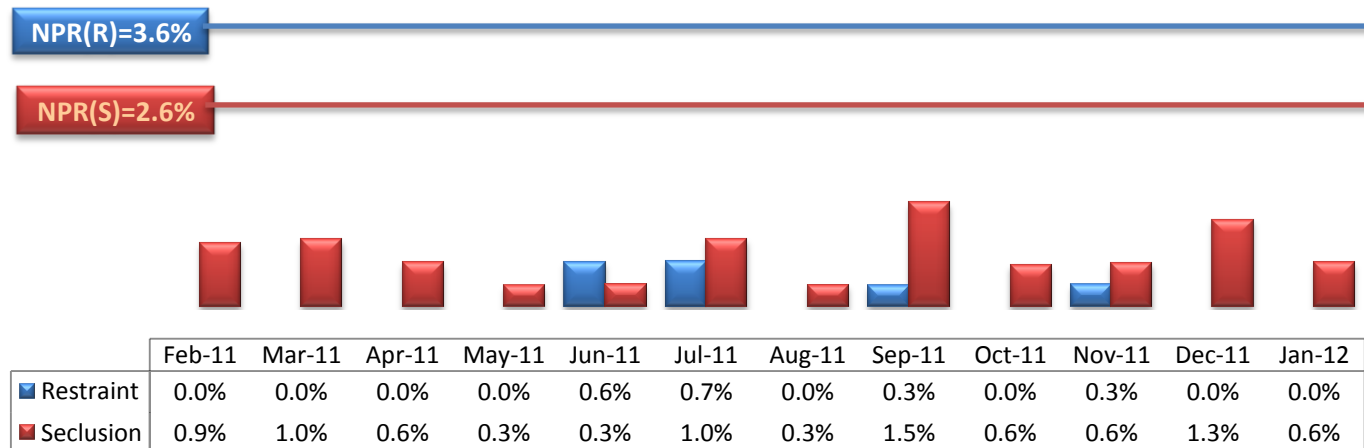


* Some patients may have experienced multiple EIM events during month and some events may have involved multiples doses of medication ordered and administered.

** Unusual incident DB suggests that two EIM events occurred in June 2011 while Avatar eMar recorded none.

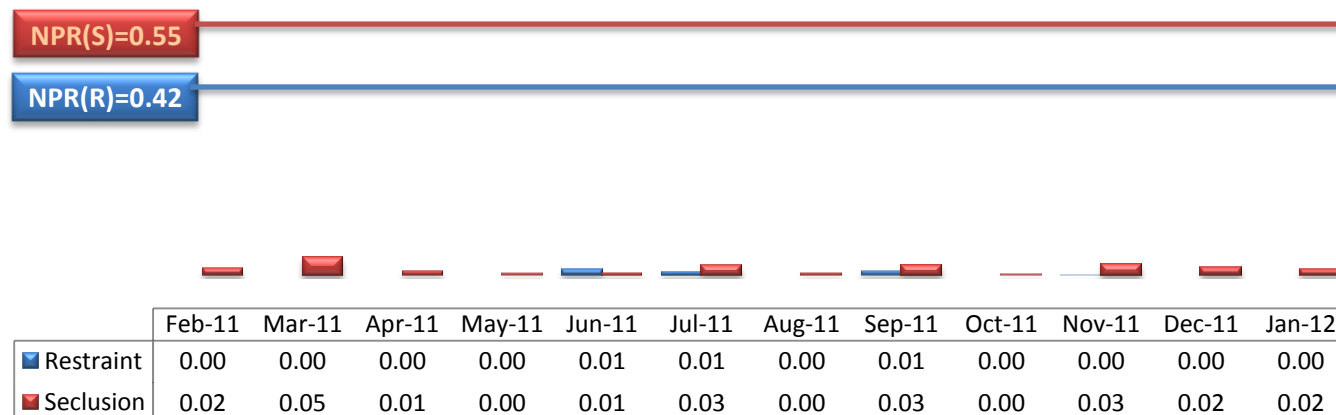
*** Data prior to October 2011 may include 'now' orders in addition to stat emergency orders.

17. Percent of Patients Restrained or Secluded



* Percent of unique patients who were restrained at least once and percent of unique patients who were secluded at least once.

18. Restraint Hours Rate & Seclusion Hours Rate



* Restraint/Seclusion Hours Rate: Number of hours spent in restraint/seclusion for every 1000 inpatient hours.

Performance Related Information for Staff & Managers

1. Census, Admissions, Discharges & Transfers

Data Source: Avatar

Updated as of 02/15/12

Category		Feb-11	Mar-11	Apr-11	May-11	Jun-11	Jul-11	Aug-11	Sep-11	Oct-11	Nov-11	Dec-11	Jan-12	Monthly Average	Total (12mths)	Figure
Admissions	Civil	12	19	16	18	8	11	14	16	19	9	19	13	15	174	Figure 1
	Forensic	17	17	22	19	17	23	31	29	19	22	20	16	21	252	
	Total	29	36	38	37	25	34	45	45	38	31	39	29	36	426	
Discharges	Civil	23	19	17	23	14	9	15	21	22	15	13	15	17	206	Figure 2
	Forensic	29	14	12	15	27	22	18	20	21	23	21	33	21	255	
	Total	52	33	29	38	41	31	33	41	43	38	34	48	38	461	
Net Gain During Month	Civil	-11	0	-1	-5	-6	2	-1	-5	-3	-6	6	-2		-32	
	Forensic	-12	3	10	4	-10	1	13	9	-2	-1	-1	-17		-3	
	Total	-23	3	9	-1	-16	3	12	4	-5	-7	5	-19		-35	
All Individuals on Roll at End of Month		276	279	288	287	271	274	286	290	285	278	283	264	280		
a. Present on Unit		269	275	280	277	261	263	280	280	279	272	275	259	273		
b. On AL		3	1	5	6	5	7	1	6	3	3	6	3	4		
c. On UL		4	3	3	4	5	4	5	4	3	3	2	2	4		
All Individuals on Roll: Daily Average during Month		292	276	283	286	276	268	278	290	282	286	279	275	281		Figure 3
a. Present on Unit*		283	268	274	277	268	258	271	282	276	280	273	267	273		
b. On AL		4	5	6	5	5	5	3	3	3	3	4	6	4		
c. On UL		4	3	3	4	3	5	4	5	3	3	2	2	3		
Patient Days*		7925	8307	8217	8601	8050	8008	8407	8448	8544	8402	8471	8268	8304	99648	
Inter-Unit Transfers during Month		21	5	8	2	4	4	13	7	10	10	25	5	10	114	Figure 4
Medical Leaves Initiated during Month	Emergency	21	19	26	29	19	18	20	21	31	25	14	19	22	262	
	Non-Emer	21	21	35	15	5	12	15	12	14	12	13	10	15	185	
	Total	42	40	61	44	24	30	35	33	45	37	27	29	37	447	
Non-Medical Leaves Initiated during Month		111	67	60	56	45	63	63	53	64	66	82	91	68	821	
UL Initiated during Month		4	3	2	1	7	5	4	3	1	1	3	2	3	36	
Total Unique Patients Served during Month		325	308	311	324	308	305	319	331	330	315	316	312	317		
30 Day Readmission **	Civil	2	2	2	0	0	0	2	1	5	0	1		1	15	
	Forensic	0	0	0	1	1	0	3	1	1	0	2		1	9	
	Total	2	2	2	1	1	0	5	2	6	0	3		2	24	

* Counts the number of patients who are present on the unit and excludes those on authorized or unauthorized leave at 11:59pm on a given day.

** Number of patients returning within 30 days of discharges that occurred during month.

Performance Related Information for Staff & Managers

2. Key Performance Indicators

Data Source: UI DB, ADR DB, Restraint/Seclusion Log, and Avatar

Updated as of 02/15/12

Category	Feb-11	Mar-11	Apr-11	May-11	Jun-11	Jul-11	Aug-11	Sep-11	Oct-11	Nov-11	Dec-11	Jan-12	Monthly Average	NPR* (Dec-09)	Figure
30 Day Readmit (Discharge Cohort)**	Civil	8.7%	10.5%	11.8%	0.0%	0.0%	0.0%	13.3%	4.8%	22.7%	0.0%	7.7%		7.9%	Figure 5
	Forensic	0.0%	0.0%	0.0%	6.7%	3.7%	0.0%	16.7%	5.0%	4.8%	0.0%	9.5%		3.9%	
	Combined	3.8%	6.1%	6.9%	2.6%	2.4%	0.0%	15.2%	4.9%	14.0%	0.0%	8.8%		5.7%	
Number of Unusual Incidents		217	222	206	217	200	188	251	230	224	214	158	178	209	Figure 6
Patient Unusual Incident Rate		26.37	23.96	23.37	23.49	23.60	22.60	27.71	24.86	23.99	24.16	17.59	19.96	23.46	Figure 7
Selected Types of Incidents	Physical Assault	63	50	46	33	49	35	61	52	64	45	27	28	46	Figure 8
	Psych Emergency	32	13	14	16	20	20	24	39	44	24	17	12	23	
	Fall	21	24	20	15	24	15	24	25	14	13	9	21	19	
	Injury***	43	39	27	23	26	25	38	34	46	30	27	24	32	
Physical Assaults by Severity	High	21	11	9	8	12	12	8	14	24	15	11	7	12	Figure 9
	Medium	24	17	13	11	12	9	18	14	21	12	9	6	13	
	Low	18	22	24	14	25	14	35	23	19	18	7	15	20	
Patient Injury Rate***		0.76	0.60	0.00	0.23	0.25	0.25	0.12	0.24	0.35	0.12	0.24	0.48	0.30	Figure 10
Patients with Major Injuries***		6	5	0	2	2	2	1	2	3	1	2	4	3	
Total Patients Injured***		41	24	14	15	17	17	21	20	38	20	11	16	21	
Total Staff Injured***		18	16	10	9	11	8	20	22	22	14	19	11	15	Figure 11
Elopement Rate		0.50	0.36	0.24	0.12	0.87	0.62	0.48	0.36	0.12	0.12	0.35	0.24	0.43	Figure 12
Medication Variance Rate		2.52	0.96	2.43	1.63	2.36	2.00	1.55	1.30	1.40	1.67	0.83	0.97	1.63	Figure 13
Adverse Drug Reaction Rate		0.63	1.32	0.73	1.16	0.25	0.62	1.07	0.95	0.35	1.07	0.59	0.36	0.76	Figure 14
Missing Med-Admin Documentation		0.44%	0.54%	0.52%	0.36%		0.40%	0.36%	0.24%	0.24%	0.29%	0.31%	0.30%	0.36%	Figure 15
Emergency Involuntary Meds		24	26	18	7	0	7	2	9	7	4	2	2	9	Figure 16
Unique EIM Events		12	13	9	3	0	4	1	4	3	2	1	1	4	
Unique Patients given EIM		9	8	9	3	0	3	1	3	3	2	1	1	4	
Percent of Patients Restrained		0.0%	0.0%	0.0%	0.0%	0.6%	0.7%	0.0%	0.3%	0.0%	0.3%	0.0%	0.0%	0.2%	Figure 17
Percent of Patients Secluded		0.9%	1.0%	0.6%	0.3%	0.3%	1.0%	0.3%	1.5%	0.6%	0.6%	1.3%	0.6%	0.8%	
Restraint Hours Rate		0.00	0.00	0.00	0.00	0.01	0.01	0.00	0.01	0.00	0.00	0.00	0.00	0.00	Figure 18
Seclusion Hours Rate		0.02	0.05	0.01	0.00	0.01	0.03	0.00	0.03	0.00	0.03	0.02	0.02	0.02	

* National Public Rate, NASMHPD Research Institute

** Percentage of patients returning within 30 days of discharges that occurred during month

*** Injury is broadly defined to include any type of injuries regardless of the cause or severity level. The total number of patients or staff injured represents all of the reported injuries including minor injuries treated with first aid alone. However, the patient injury rate considers only the number of patient injuries that required beyond first-aid level treatment based on the NRI definition and the patient injury rate is the number of 'major' patient injuries per every 1000 inpatient days. The patient major injury data became available in January 2011.

Performance Related Information for Staff & Managers

3. Unusual Incident & Medication

Data Source: UI DB, ADR DB, and Avatar

Updated as of 02/15/12

Category		Feb-11	Mar-11	Apr-11	May-11	Jun-11	Jul-11	Aug-11	Sep-11	Oct-11	Nov-11	Dec-11	Jan-12	Monthly Average	Total (12mths)	NPR* (Dec-09)
Total Unusual Incidents**		217	222	206	217	200	188	251	230	224	214	158	178	209	2505	
Total Major Unusual Incidents		147	150	127	132	134	117	170	171	168	140	93	123	139	1672	
Patient Involved UI Only**		209	199	192	202	190	181	233	210	205	203	149	165	195	2338	
Patient UI Rate		26.37	23.96	23.37	23.49	23.60	22.60	27.71	24.86	23.99	24.16	17.59	19.96	23.46		
Unique Patients Involved in UI**		128	115	116	121	122	121	120	120	115	127	95	113	118	1413	
Selected Types of Incidents	Physical Assault	63	50	46	33	49	35	61	52	64	45	27	28	46	553	
	Psych Emergency	32	13	14	16	20	20	24	39	44	24	17	12	23	275	
	Fall	21	24	20	15	24	15	24	25	14	13	9	21	19	225	
	Injury	43	39	27	23	26	25	38	34	46	30	27	24	32	382	
Physical Assaults by Severity	High	21	11	9	8	12	12	8	14	24	15	11	7	12		
	Medium	24	17	13	11	12	9	18	14	21	12	9	6	13		
	Low	18	22	24	14	25	14	35	23	19	18	7	15	20		
Total Patients Injured***		41	24	14	15	17	17	21	20	38	20	11	16	21	254	
Patients with Major Injuries***		6	5	0	2	2	2	1	2	3	1	2	4	3	30	
Patient Injury Rate***		0.76	0.60	0.00	0.23	0.25	0.25	0.12	0.24	0.35	0.12	0.24	0.48	0.30		0.39
Total Staff Injured**		18	16	10	9	11	8	20	22	22	14	19	11	15		
Total UL Incident Reports		3	4	3	7	4	5	3	4	4	1	3	2	4	43	
Total ULs Documented in Avatar		4	3	2	1	7	5	4	3	1	1	3	2	3		
Elopement Rate		0.50	0.36	0.24	0.12	0.87	0.62	0.48	0.36	0.12	0.12	0.35	0.24	0.43		0.13
Total Medication Variance (MV) Incidents Reported **		20	8	20	14	19	16	13	11	12	14	7	8	14	162	
MV Rate		2.52	0.96	2.43	1.63	2.36	2.00	1.55	1.30	1.40	1.67	0.83	0.97	1.63		
Total Adverse Drug Reactions (ADR) Reported		5	11	6	10	2	5	9	8	3	9	5	3	6	76	
ADR Rate		0.63	1.32	0.73	1.16	0.25	0.62	1.07	0.95	0.35	1.07	0.59	0.36	0.76		
Total Medication Administrations Scheduled		93288	99376	97031	101053		96167	96945	95639	103346	101392	101756	99731		1085724	
Total Missing Documentations		413	540	507	361		383	349	231	246	297	315	304		3946	
Percent of Missing Documentation		0.44%	0.54%	0.52%	0.36%		0.40%	0.36%	0.24%	0.24%	0.29%	0.31%	0.30%		0.36%	
Total Patients with >=3 STATs		53	33	53	30	18	17	20	24	6	6	2	3	22		
Total STAT Orders										40	42	14	23	30		
Emergency STAT Med Orders Administered Involuntarily (EIM)		24	26	18	7	0	7	2	9	7	4	2	2	9		
Unique EIM Events		12	13	9	3	0	4	1	4	3	2	1	1	4		
Unique Patients given EIM		9	8	9	3	0	3	1	3	3	2	1	1	4		

* National Public Rate, NASMHPD Research Institute

** Numbers may change if any additional UI report is made after the data run date from UI database (around the 15th of the following month).

*** Avatar report that indicates the number of patients with 3 or more STATs was unavailable at report run time

Performance Related Information for Staff & Managers

4. Restraint & Seclusion

Data Source: Restraint/Seclusion Log and UI DB (for # of total events and patients) and Avatar (for patient days/hours)

Updated as of 02/15/12

Category	Feb-11	Mar-11	Apr-11	May-11	Jun-11	Jul-11	Aug-11	Sep-11	Oct-11	Nov-11	Dec-11	Jan-12	Monthly Average	Total (12mths)	NPR* (Dec-09)
Number of Restraint Events	0	0	0	0	2	2	0	1	0	1	0	0	0.5	6	
Number of Unique Patients Restrained	0	0	0	0	2	2	0	1	0	1	0	0	0.5		
Percentage of Patients Restrained	0.0%	0.0%	0.0%	0.0%	0.6%	0.7%	0.0%	0.3%	0.0%	0.3%	0.0%	0.0%	0.2%		3.6%
Total Restraint Hours (h:mm)	0:00	0:00	0:00	0:00	2:50	1:45	0:00	2:00	0:00	0:15	0:00	0:00	0:34	6:50	
Restraint Hours Rate	0.00	0.00	0.00	0.00	0.01	0.01	0.00	0.01	0.00	0.00	0.00	0.00	0.00		0.42
Number of Seclusion Events	3	5	2	1	1	3	1	6	2	5	5	2	3.0	36	
Number of Unique Patients Secluded	3	3	2	1	1	3	1	5	2	2	4	2	2.4		
Percentage of Patients Secluded	0.9%	1.0%	0.6%	0.3%	0.3%	1.0%	0.3%	1.5%	0.6%	0.6%	1.3%	0.6%	0.8%		2.6%
Total Seclusion Hours (h:mm)	3:25	9:15	2:00	1:00	1:11	5:10	1:00	5:37	0:35	6:04	4:10	3:13	3:33	42:40	
Seclusion Hours Rate	0.02	0.05	0.01	0.00	0.01	0.03	0.00	0.03	0.00	0.03	0.02	0.02	0.02		0.55

* National Public Rate, NASMHPD Research Institute

Performance Related Information for Staff & Managers

5. Major Incidents by Incident Location/Unit

Data Source: UI DB

Updated as of 02/15/12

Category		Feb-11	Mar-11	Apr-11	May-11	Jun-11	Jul-11	Aug-11	Sep-11	Oct-11	Nov-11	Dec-11	Jan-12	Monthly Average	Total (12mths)	Percent
Total Unusual Incidents		217	222	206	217	200	188	251	230	224	214	158	178	209	2505	
Total Major Incidents*		147	150	127	132	134	117	170	171	168	140	93	123	139	1672	100%
Major Incident Location	1A	5	11	13	16	7	9	18	16	13	12	11	14	12	145	9%
	1B	9	12	8	25	16	18	19	24	16	14	8	13	15	182	11%
	1C	16	9	9	3	11	4	10	8	7	1	6	8	8	92	6%
	1D	11	15	14	10	11	5	4	15	29	20	11	9	13	154	9%
	1E	32	21	21	24	15	20	23	29	27	10	7	8	20	237	14%
	1F	20	9	8	11	10	9	3	19	14	17	10	5	11	135	8%
	1G	8	12	14	4	6	10	22	16	24	17	7	11	13	151	9%
	2A	3	4	2	2	3	0	5	3	2	4	3	3	3	34	2%
	2B	0	0	3	2	0	2	1	2	3	2	1	3	2	19	1%
	2C	13	19	7	11	11	6	8	4	6	13	7	8	9	113	7%
	2D	12	7	7	6	11	11	21	9	3	11	6	12	10	116	7%
	ANXA/B	0	-	-	-	-	-	-	-	-	-	-	-	0	0	0%
	TLC	10	17	11	7	19	12	16	11	9	13	8	12	12	145	9%
	Other	8	14	10	11	14	11	20	15	15	6	8	17	12	149	9%
Total Physical Assault Incidents		63	50	46	33	49	35	61	52	64	45	27	28	46	553	100%
Assault Incident Location	1A	1	1	3	3	1	4	5	6	4	2	4	1	3	35	6%
	1B	1	2	1	3	2	3	6	0	2	0	1	1	2	22	4%
	1C	4	2	3	0	6	1	2	2	2	0	2	4	2	28	5%
	1D	6	11	8	5	6	1	0	5	15	11	5	4	6	77	14%
	1E	17	8	13	8	5	8	11	11	8	4	3	0	8	96	17%
	1F	13	3	3	4	4	2	2	7	6	7	3	0	5	54	10%
	1G	8	7	5	0	3	5	8	9	17	10	4	4	7	80	14%
	2A	0	1	0	1	0	0	0	0	0	0	0	0	0	2	0%
	2B	0	0	0	1	0	1	0	1	0	1	0	0	0	4	1%
	2C	3	3	0	3	8	1	4	1	3	3	0	2	3	31	6%
	2D	5	4	3	1	4	7	10	4	1	5	1	6	4	51	9%
	ANXA/B	0	-	-	-	-	-	-	-	-	-	-	-	0	0	0%
	TLC	3	7	5	4	5	2	9	3	5	2	3	4	4	52	9%
	Other	2	1	2	0	5	0	4	3	1	0	1	2	2	21	4%

Performance Related Information for Staff & Managers

5. Major Incidents by Incident Location/Unit

Data Source: UI DB

Updated as of 02/15/12

Category		Feb-11	Mar-11	Apr-11	May-11	Jun-11	Jul-11	Aug-11	Sep-11	Oct-11	Nov-11	Dec-11	Jan-12	Monthly Average	Total (12mths)	Percent
Total Fall Incidents		21	24	20	15	24	15	24	25	14	13	9	21	19	225	100%
Fall Incident Location	1A	2	7	5	1	5	5	4	3	4	5	1	6	4	48	21%
	1B	2	1	2	1	3	5	4	13	4	0	2	1	3	38	17%
	1C	2	2	1	1	0	0	3	0	1	0	0	1	1	11	5%
	1D	1	0	2	2	2	2	0	1	0	1	0	1	1	12	5%
	1E	3	0	0	3	0	0	2	1	0	2	0	2	1	13	6%
	1F	0	1	0	1	0	0	0	2	1	1	0	0	1	6	3%
	1G	0	2	0	0	0	0	0	1	1	0	0	0	0	4	2%
	2A	1	1	1	0	0	0	1	0	0	1	0	1	1	6	3%
	2B	0	0	1	0	0	0	1	0	0	0	1	2	0	5	2%
	2C	4	3	2	2	1	0	0	1	0	0	0	2	1	15	7%
	2D	1	0	2	0	2	1	5	1	1	1	1	1	1	16	7%
	ANXA/B	0	-	-	-	-	-	-	-	-	-	-	-	0	0	0%
	TLC	4	4	3	2	9	2	3	0	1	1	2	0	3	31	14%
	Other	1	3	1	2	2	0	1	2	1	1	2	4	2	20	9%
Total Injury Incidents		43	39	27	23	26	25	38	34	46	30	27	24	32	382	100%
Injury Incident Location	1A	0	3	3	2	1	4	6	3	3	3	3	2	3	33	9%
	1B	3	4	2	6	1	3	2	4	3	0	0	2	3	30	8%
	1C	1	1	2	1	1	1	3	0	2	0	2	2	1	16	4%
	1D	2	6	3	2	4	1	0	3	8	5	4	2	3	40	10%
	1E	8	3	2	5	3	1	6	6	9	3	3	1	4	50	13%
	1F	10	3	1	3	3	2	0	4	3	6	4	4	4	43	11%
	1G	4	5	4	0	0	0	5	3	8	4	2	1	3	36	9%
	2A	0	1	0	0	0	0	0	0	1	0	0	0	0	2	1%
	2B	0	0	0	0	0	1	1	0	0	1	0	1	0	4	1%
	2C	3	6	1	0	1	4	4	1	1	2	1	1	2	25	7%
	2D	6	1	2	1	2	3	2	4	1	4	1	2	2	29	8%
	ANXA/B	0	-	-	-	-	-	-	-	-	-	-	-	0	0	0%
	TLC	3	5	6	1	5	4	2	1	4	1	2	0	3	34	9%
	Other	3	1	1	2	5	1	7	5	3	1	5	6	3	40	10%

* Not every incident is a major incident. This counts only those major incidents that required extensive investigations from the risk manager.

- Annex A/B Closed in February 2011. All patients were transferred to other units.

Performance Related Information for Staff & Managers

6. Demographic Information of Individuals in Care

Data Source: Avatar

Updated as of 02/15/12

Category	Sub-group	Feb-11	Mar-11	Apr-11	May-11	Jun-11	Jul-11	Aug-11	Sep-11	Oct-11	Nov-11	Dec-11	Jan-12	Monthly Average	Percent*
Total Active (on Roll) at End of Month*		276	279	288	287	271	274	286	290	285	278	283	264	280	
Gender	Female	66	67	69	72	59	58	68	69	64	60	63	60	65	23.1%
	Male	210	212	219	215	212	216	218	221	221	218	220	204	216	76.9%
Age	Median Age (Years)	55 yrs	55 yrs	55 yrs	55 yrs	55 yrs	55 yrs	54 yrs	55 yrs	55 yrs	55 yrs	54 yrs	55 yrs	55 yrs	
	<30 years old	16	15	19	20	18	18	18	24	24	27	20	13	19	6.9%
	>=30 and <40 years old	23	27	29	30	23	24	27	21	21	20	28	29	25	9.0%
	>=40 and <50 years old	47	49	47	47	45	48	53	52	53	48	51	45	49	17.4%
	>=50 and <60 years old	114	108	113	111	107	105	108	107	106	103	102	95	107	38.1%
	>=60 years old	76	80	80	79	78	79	80	86	81	80	81	82	80	28.6%
Legal Status of Individuals on Roll at End of Month	Emergency	19	21	22	15	14	18	20	15	16	16	19	19	18	6.4%
	Inpatient Commitment	32	31	30	30	33	32	32	31	32	27	27	27	30	10.8%
	Outpatient Commitment	29	29	28	30	26	25	26	28	22	24	27	22	26	9.4%
	Voluntary	41	40	41	41	40	41	38	41	40	39	39	42	40	14.4%
	Non-Protesting	1	1	1	1	1	1	1	0	0	0	0	0	1	0.2%
	Civil Sub-total	122	122	122	117	114	117	117	115	110	106	112	110	115	41.2%
	DC Exam	42	41	49	51	38	44	54	61	61	60	63	49	51	18.2%
	Mentally Incompetent	2	2	4	4	3	3	4	3	3	3	2	3	3	1.1%
	NGBRI - DC	93	98	96	96	98	93	95	94	95	93	91	88	94	33.6%
	NGBRI - US	10	9	10	12	12	12	11	12	11	11	10	10	11	3.9%
	NGBRI - VI	2	2	2	2	2	1	1	1	1	1	1	1	1	0.5%
	Dual Commitment	1	1	1	1	1	1	1	1	1	1	1	1	1	0.4%
	Sexual Psychopath (Miller Act)	4	4	4	4	3	3	3	3	3	3	3	2	3	1.2%
	Forensic Sub-total	154	157	166	170	157	157	169	175	175	172	171	154	165	58.8%
Length of Stay	Median LOS (Days)	1091 d	994 d	923 d	949 d	1073 d	1043 d	856 d	844 d	884 d	915 d	876 d	977 d	952 d	
	Average LOS (Days)	3282 d	3192 d	3069 d	3093 d	3261 d	3194 d	3033 d	2978 d	2988 d	3053 d	2977 d	3150 d	3106 d	
	<30 Days	30	33	34	30	22	33	39	39	30	29	33	27	32	11.3%
	>=30 ~ <365 Days	60	62	68	72	69	61	68	72	78	77	79	68	70	24.8%
	>= 1 Year & < 2 Years	27	28	32	29	25	27	25	24	22	20	20	22	25	9.0%
	>= 2 Years & < 5 Years	45	44	40	43	43	43	45	46	46	43	42	39	43	15.4%
	>= 5 Years & < 20 Years	63	64	67	65	64	63	62	61	61	62	63	63	63	22.6%
	>= 20 Years	51	48	47	48	48	47	47	48	48	47	46	45	48	17.0%

* Counts the total number of individuals who are on the hospital roll at end of each month. This number serves as denominator to calculate percentage of each group.