

**Government of the District of Columbia
Department of Mental Health (DMH)**

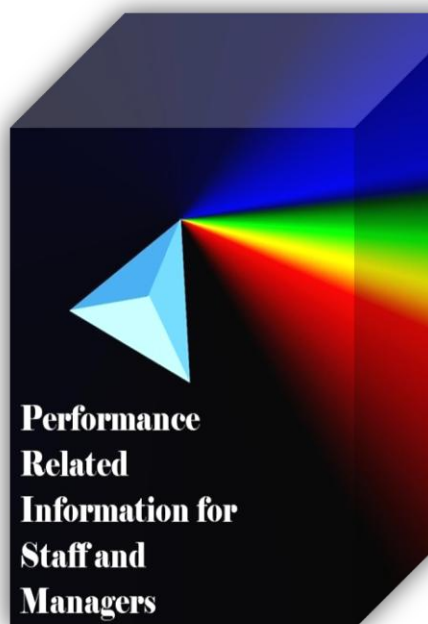


Performance Related Information for Staff and Managers

PRISM

APRIL 2013

Table of Contents



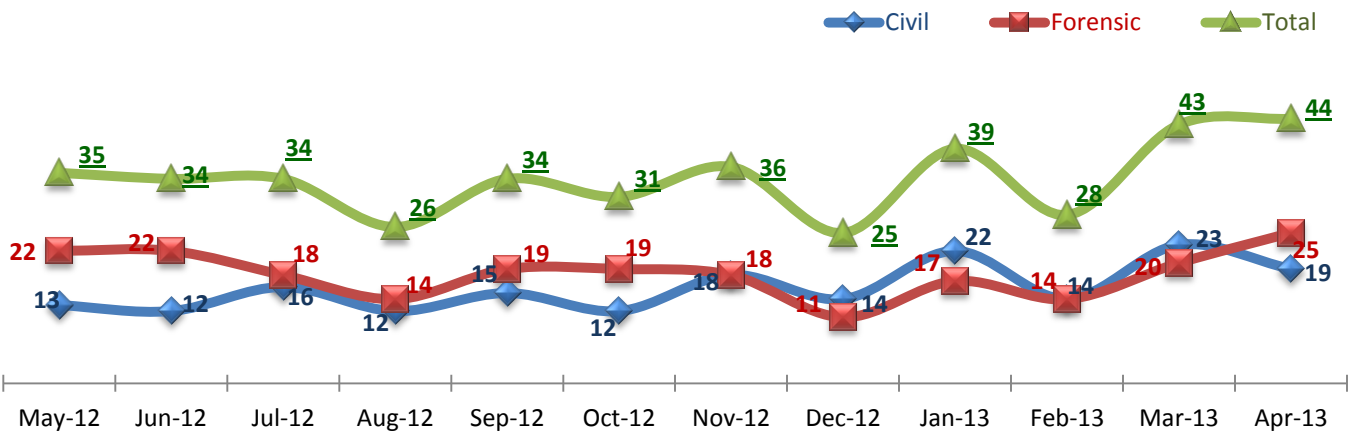
1.	Admissions to SEH	1
2.	Discharges from SEH.....	1
3.	Average Daily Census	1
4.	Transfers	2
5.	30-Day Readmission Rate	2
6.	Unusual Incidents.....	2
7.	Unusual Incidents by Severity	3
8.	Patient-Involved Unusual Incidents.....	3
9.	Selected Types of Incidents	4
10.	Physical Assaults by Severity	4
11.	Patient Injuries.....	5
12.	Staff Injuries.....	5
13.	Eloperments	5
14.	Reported Medication Variance Events	6
15.	Reported Adverse Drug Reactions	6
16.	Percent of Missing Documentation on Med-Administration.....	6
17.	Number of STAT Events and Individuals Involved	7
18.	Percent of Patients Restrained or Secluded.....	7
19.	Restraint Hours Rate & Seclusion Hours Rate	7
20.	Demographics and Length of Stay	8

<input type="checkbox"/>	<i>Appendix 1) Table – Census, Admissions & Discharges</i>
<input type="checkbox"/>	<i>Appendix 2) Table – Key Performance Indicators</i>
<input type="checkbox"/>	<i>Appendix 3) Table – Unusual Incident & Medication</i>
<input type="checkbox"/>	<i>Appendix 4) Table – Restraint & Seclusion</i>
<input type="checkbox"/>	<i>Appendix 5) Table – Major Incidents by Incident Location/Unit</i>
<input type="checkbox"/>	<i>Appendix 6) Table – Demographic Information of Individuals in Care</i>

05/16/2013

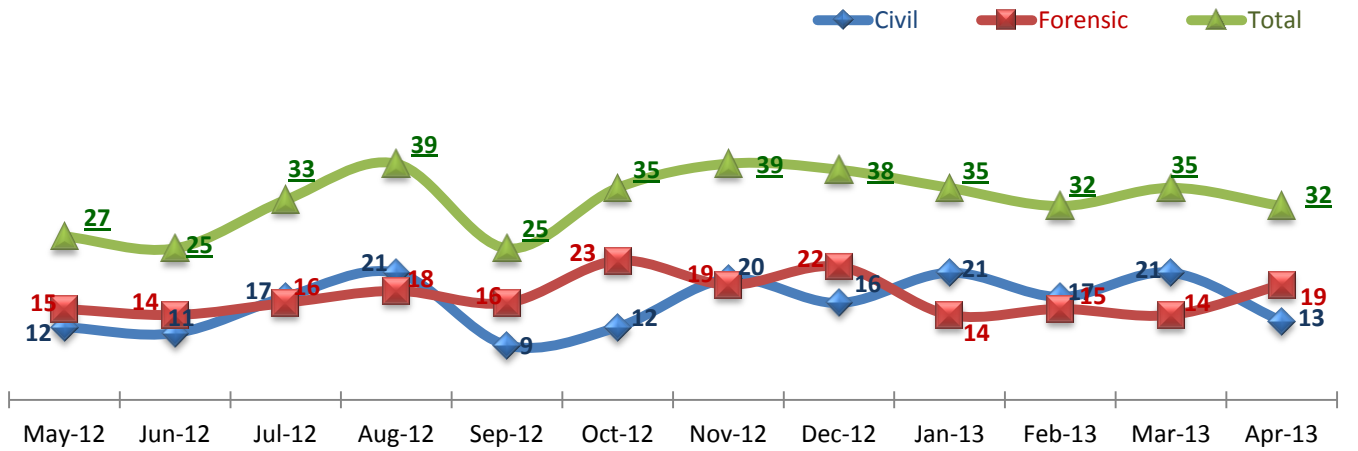
Office of Statistics and Reporting (OSR)

1. Admissions to SEH



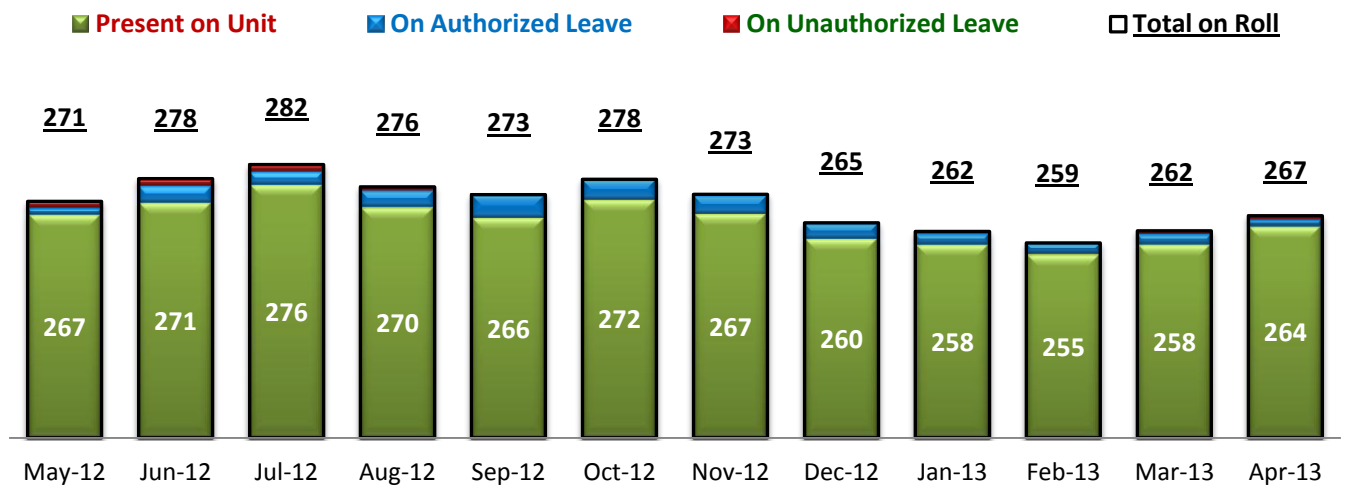
* Number of admissions to SEH inpatient program, including transfers from outpatient to inpatient program.

2. Discharges from SEH



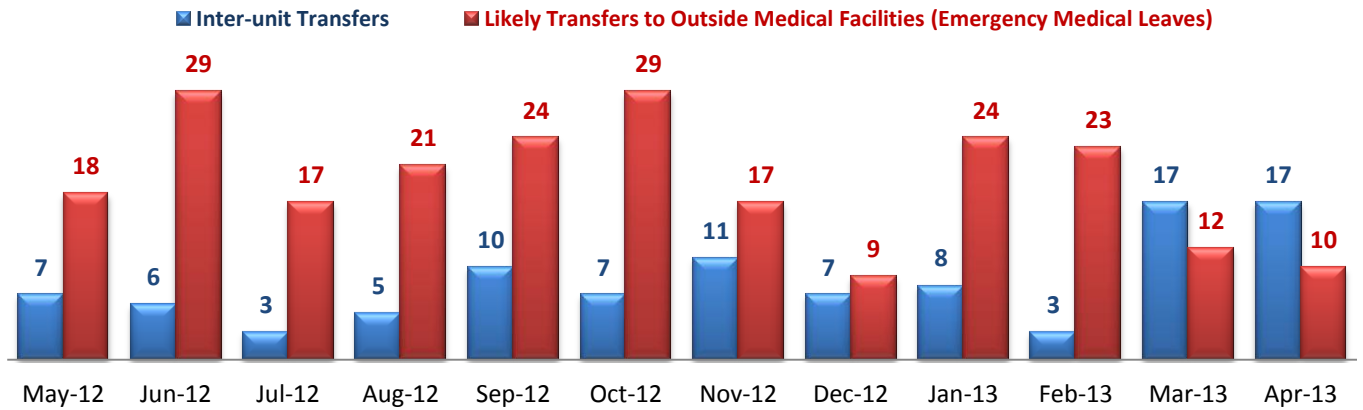
* Number of discharges from SEH inpatient program, including transfers from inpatient to outpatient program.

3. Average Daily Census



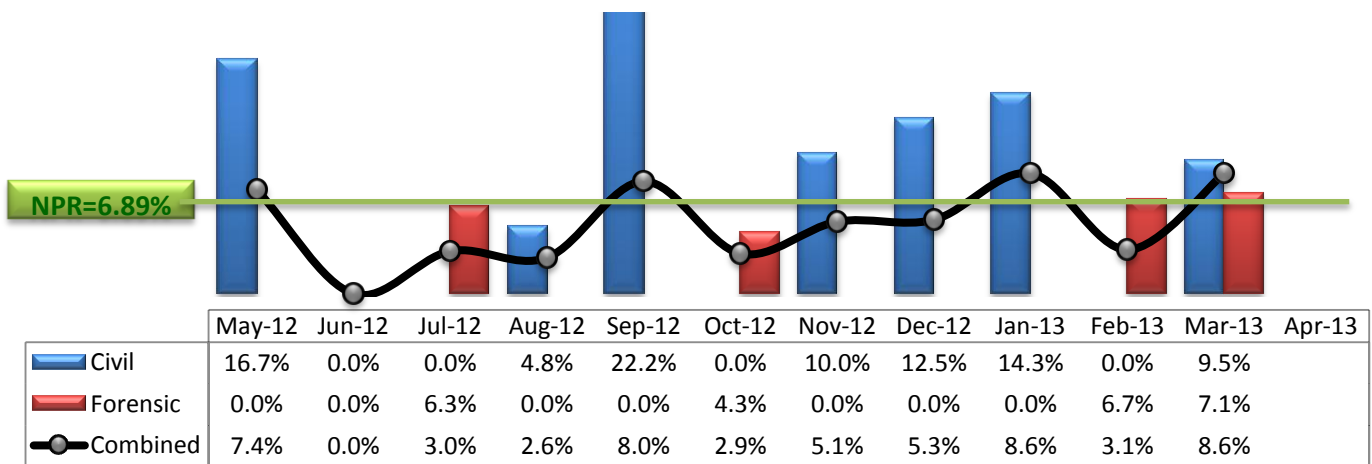
* Data above is the daily average number of individuals counted at 11:59 PM every day during each month.

4. Transfers



* Number of inter-unit transfers that occurred during month and number of emergency medical leaves that were initiated during month.

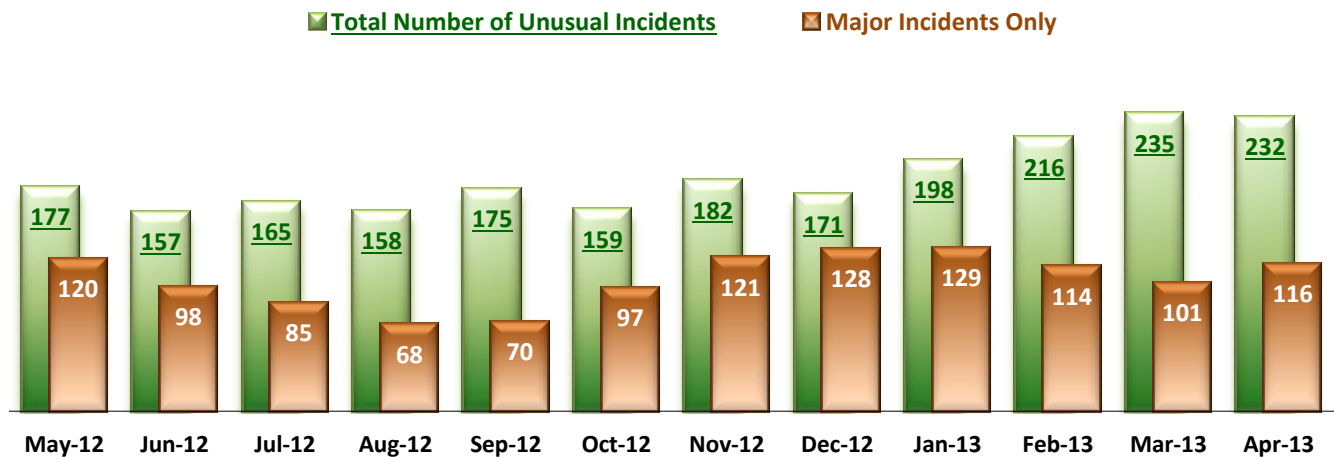
5. 30-Day Readmission Rate



* Percent of discharges that returned to SEH within 30 days of discharges. It does not include those who may have been re-hospitalized at another psychiatric facility. This measure requires 30-day observation following discharge.

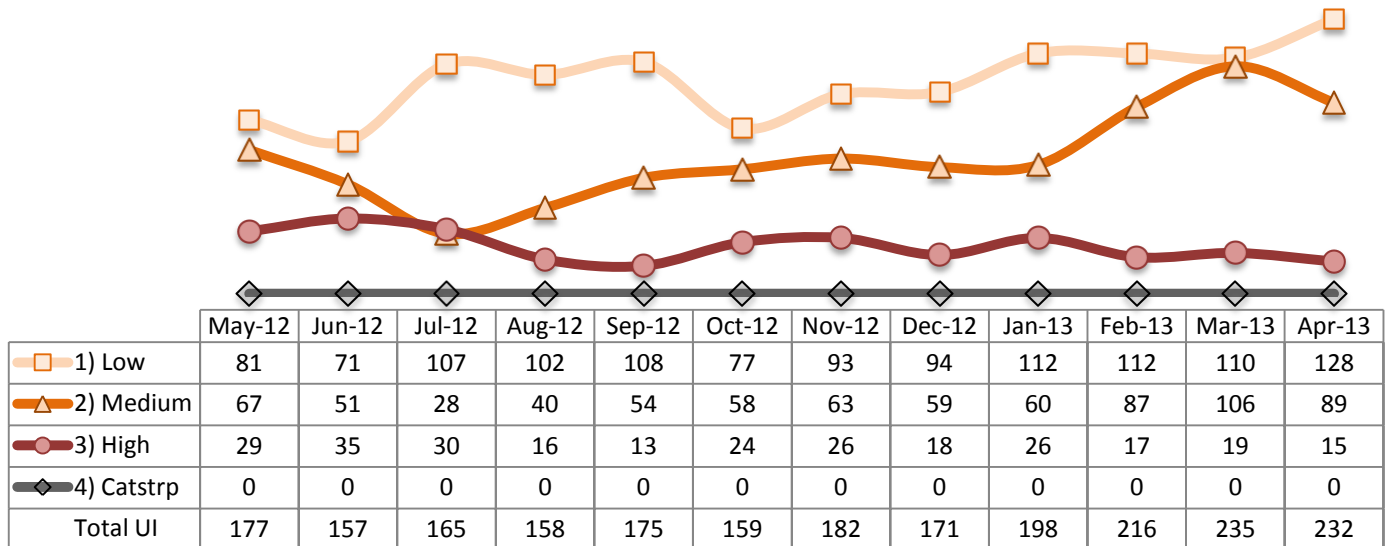
** NPR: National Public Rate as of June 2012 published by NASMHPD Research Institute in January 2013.

6. Unusual Incidents

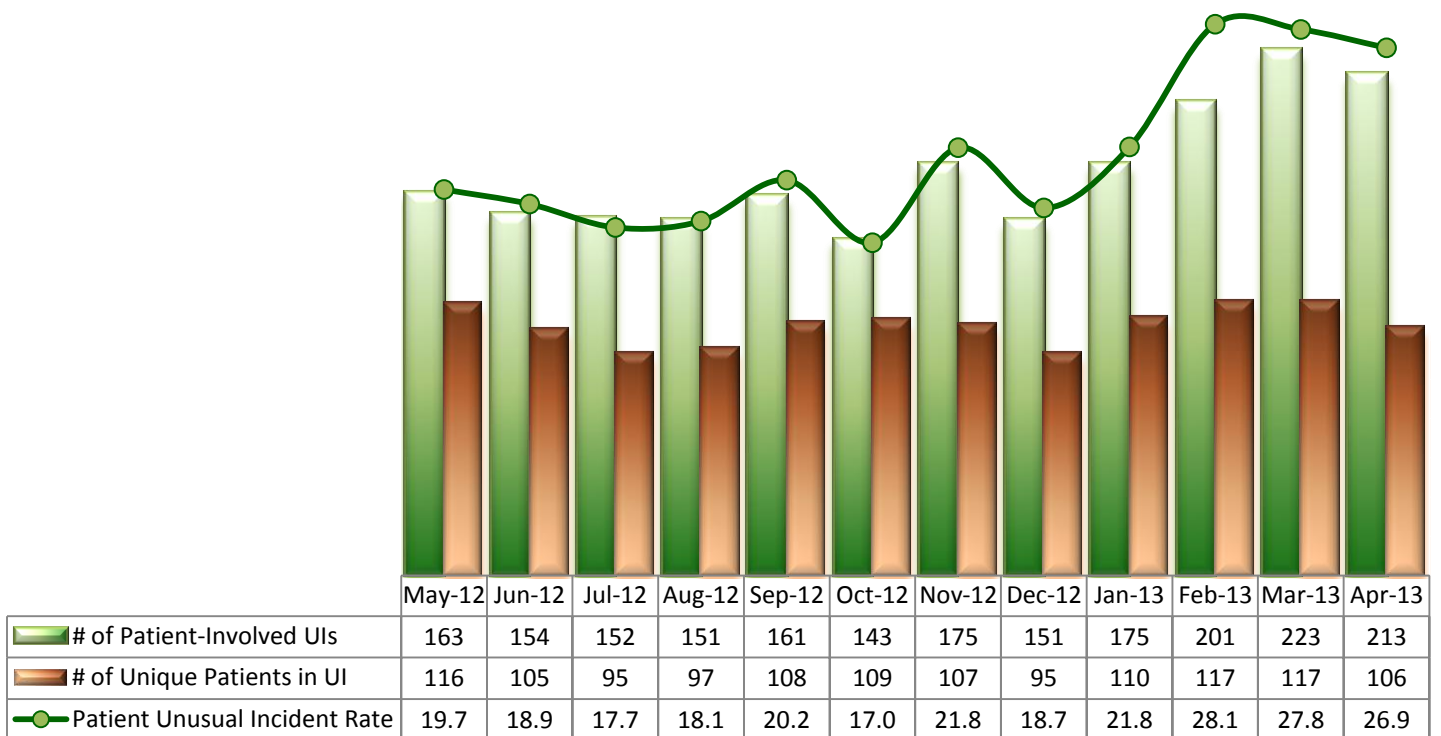


* Numbers above represent all types of the unusual incidents (UIs) that were reported to the Risk Manager by PRISM publication date, including those that did not involve any patients.

7. Unusual Incidents by Severity

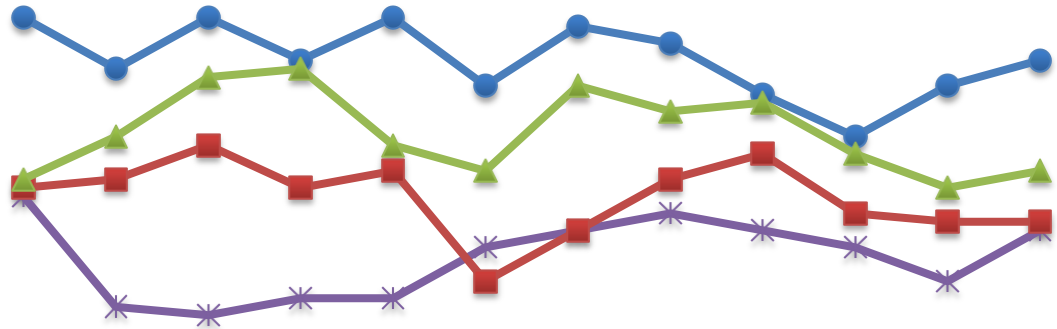


8. Patient-Involved Unusual Incidents



*The total number of patient-involved UIs counts only those incidents that involved at least one or more patients. Some patients may be involved in more than one incident and the number of unique patients does not double count them. The patient UI rate is the number of patient-involved unusual incidents reported for every 1000 inpatient days.

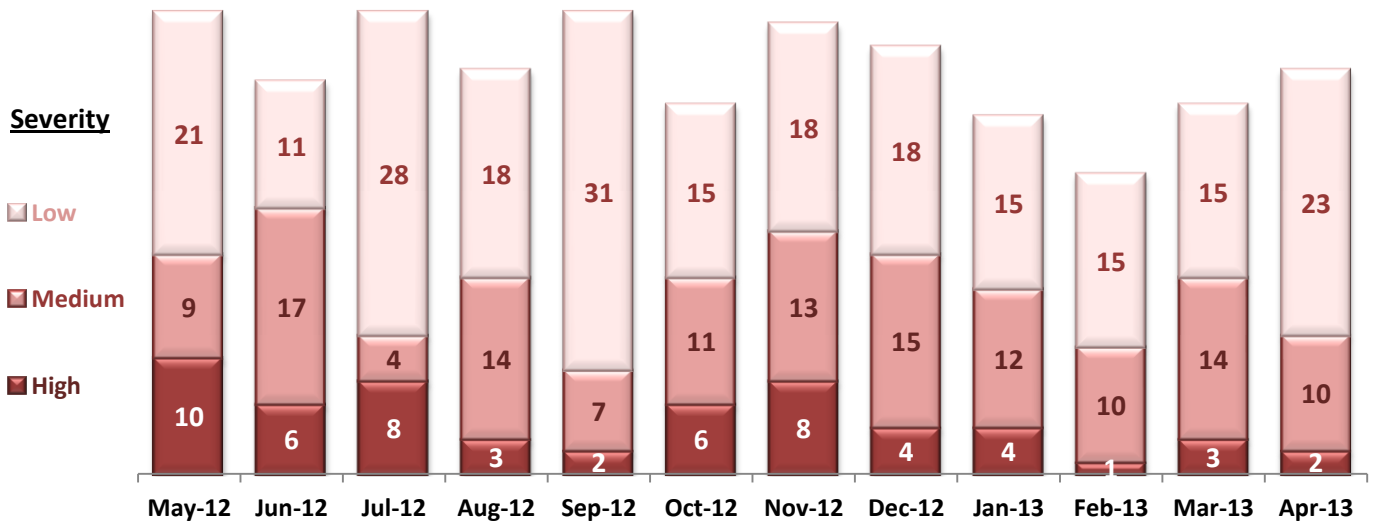
9. Selected Types of Incidents



	May-12	Jun-12	Jul-12	Aug-12	Sep-12	Oct-12	Nov-12	Dec-12	Jan-13	Feb-13	Mar-13	Apr-13
Physical Assault	40	34	40	35	40	32	39	37	31	26	32	35
Psych Emergency	19	6	5	7	7	13	15	17	15	13	9	15
Fall	20	21	25	20	22	9	15	21	24	17	16	16
Injury	21	26	33	34	25	22	32	29	30	24	20	22

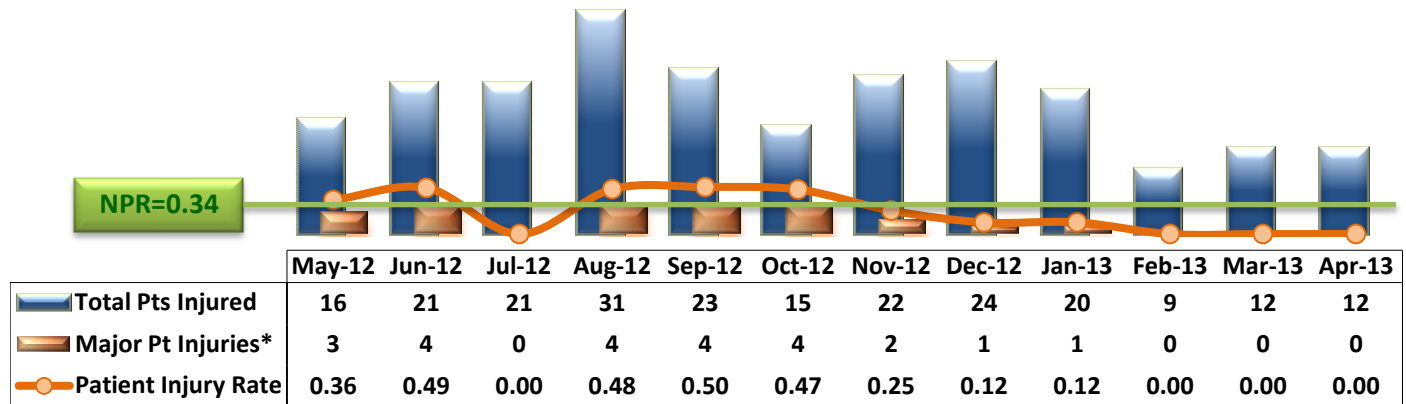
* These are incident types that are frequently reported. Some incidents may be counted in multiple categories. For example, a physical assault incident that accompanied psychiatric emergency and injury is counted under psychiatric emergency and injury as well as under physical assault. Injury is broadly defined to include any type of injuries regardless of the cause or severity level.

10. Physical Assaults by Severity



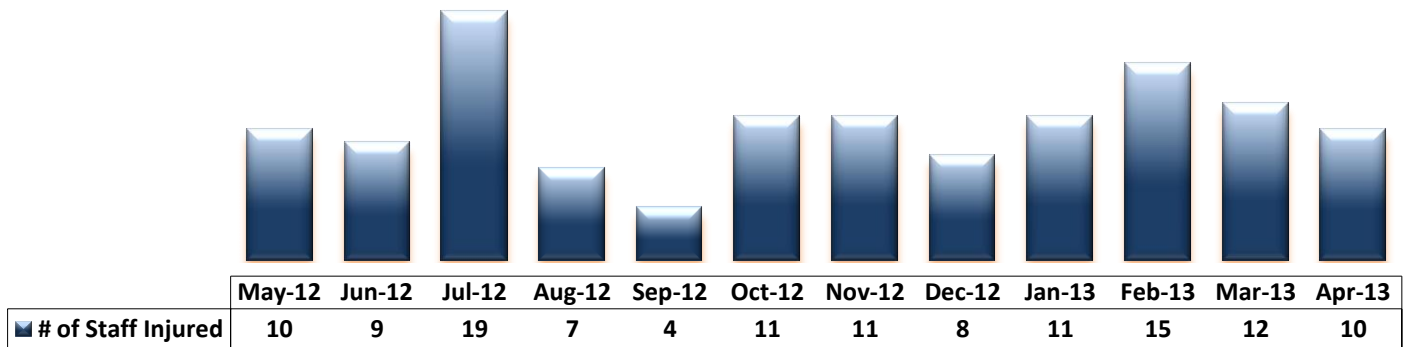
* Any physical assault that accompanies a code 13 or results in extensive injury needing off-unit treatment or transfer to ER is considered to be high severity, any physical assault that causes a minor injury that can be treated on unit is considered to be medium severity, and physical assault events that result in no injury are considered to be low severity.

11. Patient Injuries



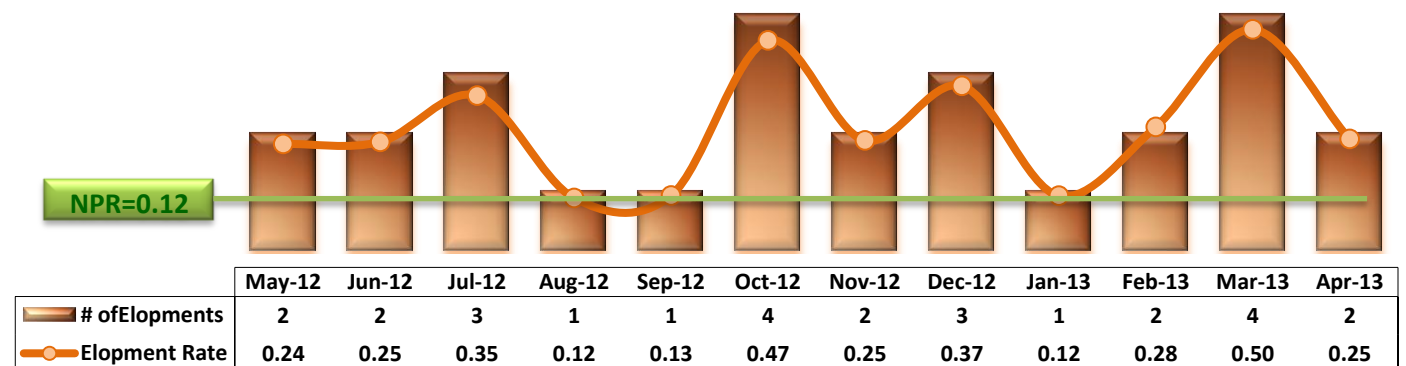
* Injury is broadly defined to include any type of injuries regardless of the cause or severity level. The total number of patients injured represents all of the reported injuries including minor injuries treated with first aid alone. However, the patient injury rate considers only the number of patient injuries that required beyond first-aid level treatment based on the NRI definition and the patient injury rate is the number of 'major' patient injuries per every 1000 inpatient days

12. Staff Injuries



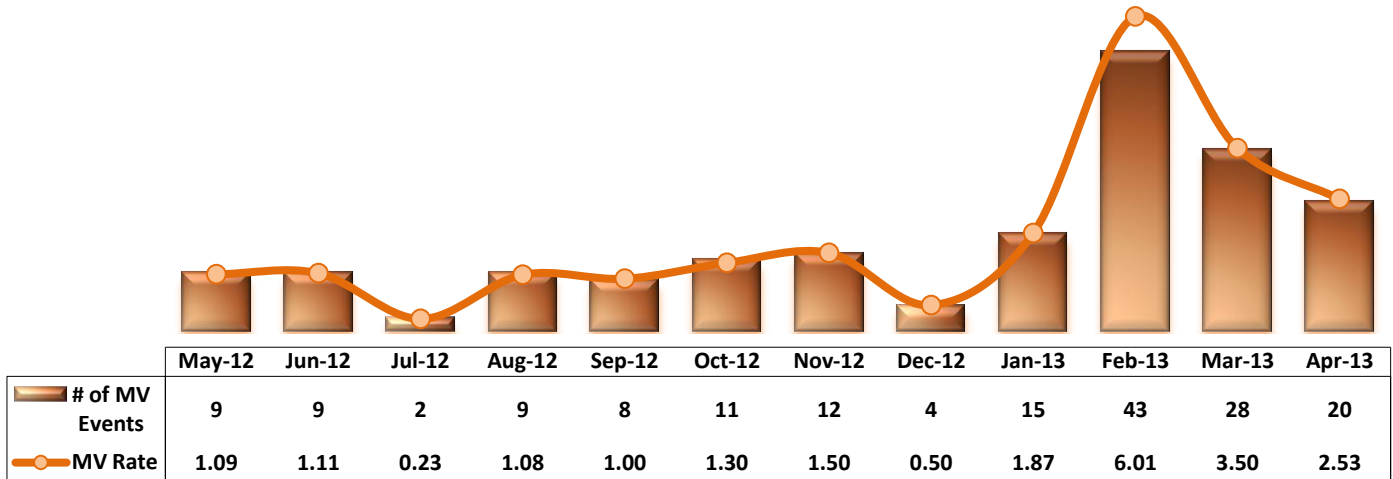
* Injury is broadly defined to include any type of injuries regardless of the cause or severity level. The total number of staff injured represents all of the reported staff injuries including minor injuries treated with first aid alone.

13. Elopements



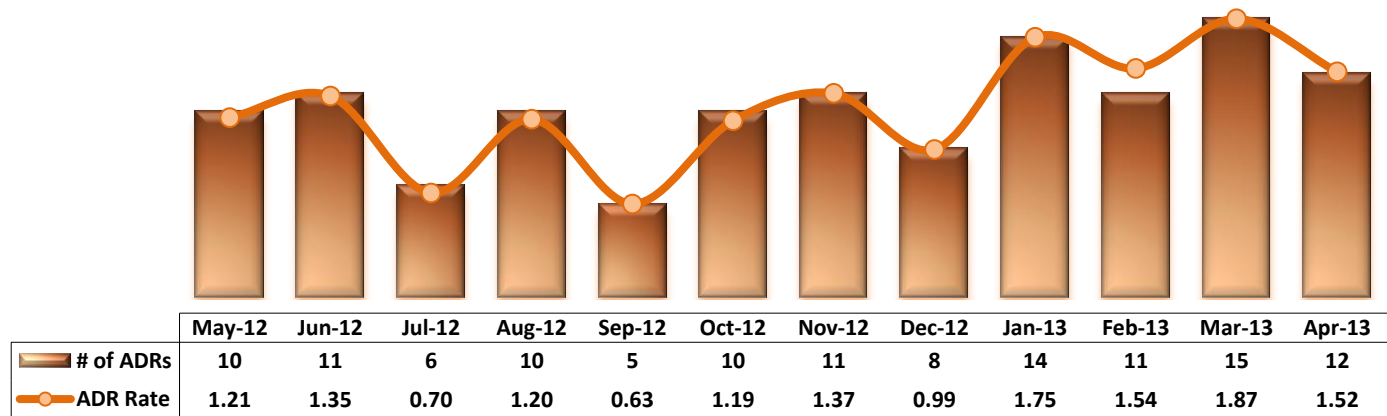
* It counts the total number of unauthorized leaves for any duration that were initiated during month and were recorded in Avatar. The elopement rate is the number of those unauthorized leaves that occurred for every 1000 inpatient days.

14. Reported Medication Variance Events



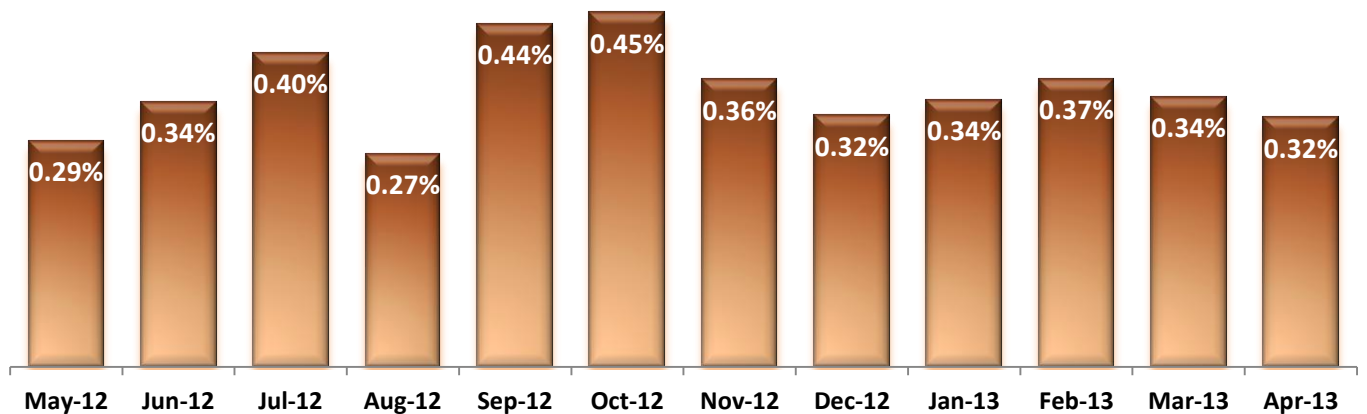
* MV Rate: Number of reported medication variance events that occurred for every 1000 inpatient days.

15. Reported Adverse Drug Reactions

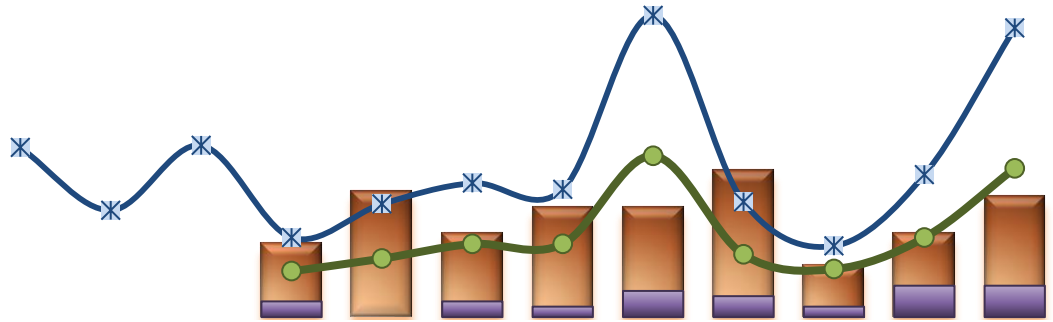


* ADR Rate: Number of reported adverse drug reaction events that occurred for every 1000 inpatient days.

16. Percent of Missing Documentation on Med-Administration



17. Number of STAT Events and Individuals Involved

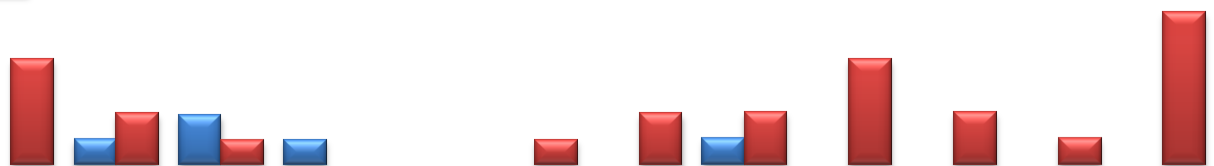


	May-12	Jun-12	Jul-12	Aug-12	Sep-12	Oct-12	Nov-12	Dec-12	Jan-13	Feb-13	Mar-13	Apr-13
IICs w/ >=1 STAT				14	24	16	21	21	28	10	16	23
IICs w/ >=3 STAT Events				3	0	3	2	5	4	2	6	6
Total STAT Events				22	28	35	35	77	30	23	38	71
Total STAT Orders	81	51	82	38	54	64	61	144	55	34	68	138

18. Percent of Patients Restrained or Secluded

NPR(R)=5.7%

NPR(S)=2.4%



	May-12	Jun-12	Jul-12	Aug-12	Sep-12	Oct-12	Nov-12	Dec-12	Jan-13	Feb-13	Mar-13	Apr-13
Restraint	0.0%	0.3%	0.6%	0.3%	0.0%	0.0%	0.0%	0.3%	0.0%	0.0%	0.0%	0.0%
Seclusion	1.3%	0.7%	0.3%	0.0%	0.0%	0.3%	0.7%	0.7%	1.3%	0.7%	0.3%	1.9%

* Percent of unique patients who were restrained at least once and percent of unique patients who were secluded at least once. The denominator includes all individuals who were served in care >=1 day during month.

19. Restraint Hours Rate & Seclusion Hours Rate

NPR(R)=0.65

NPR(S)=0.55

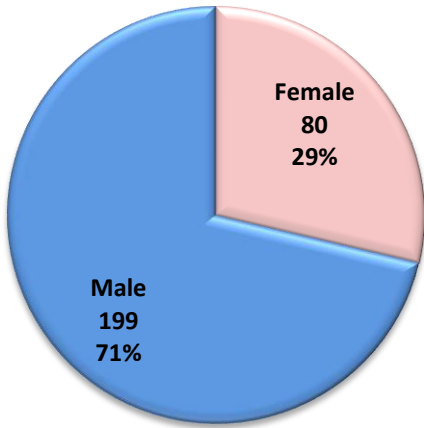


	May-12	Jun-12	Jul-12	Aug-12	Sep-12	Oct-12	Nov-12	Dec-12	Jan-13	Feb-13	Mar-13	Apr-13
Restraint	0.000	0.005	0.001	0.010	0.000	0.000	0.000	0.002	0.000	0.000	0.000	0.000
Seclusion	0.031	0.057	0.005	0.000	0.000	0.038	0.016	0.049	0.043	0.042	0.005	0.054

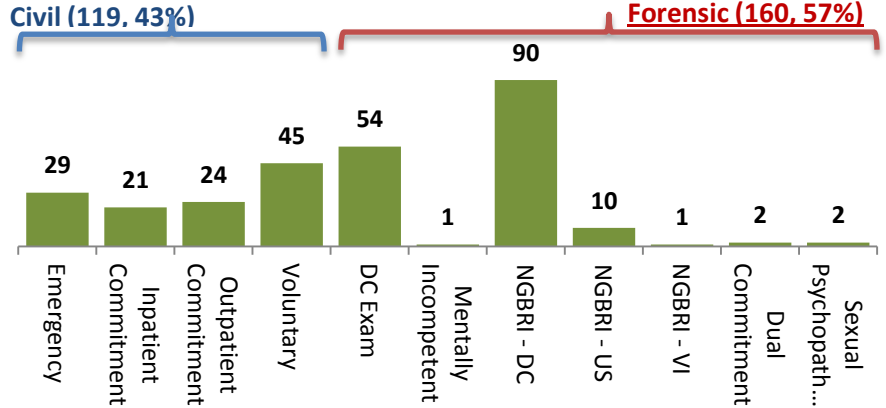
* Restraint/Seclusion Hours Rate: Number of hours spent in restraint/seclusion for every 1000 inpatient hours.

20. Demographics and Length of Stay

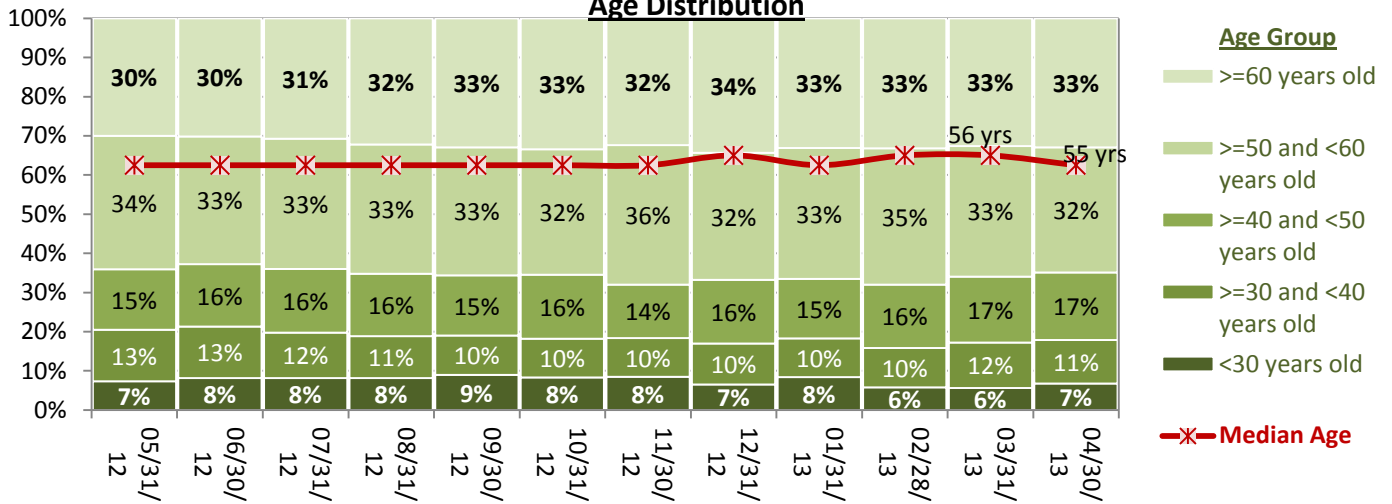
Gender Distribution (4/30/13)



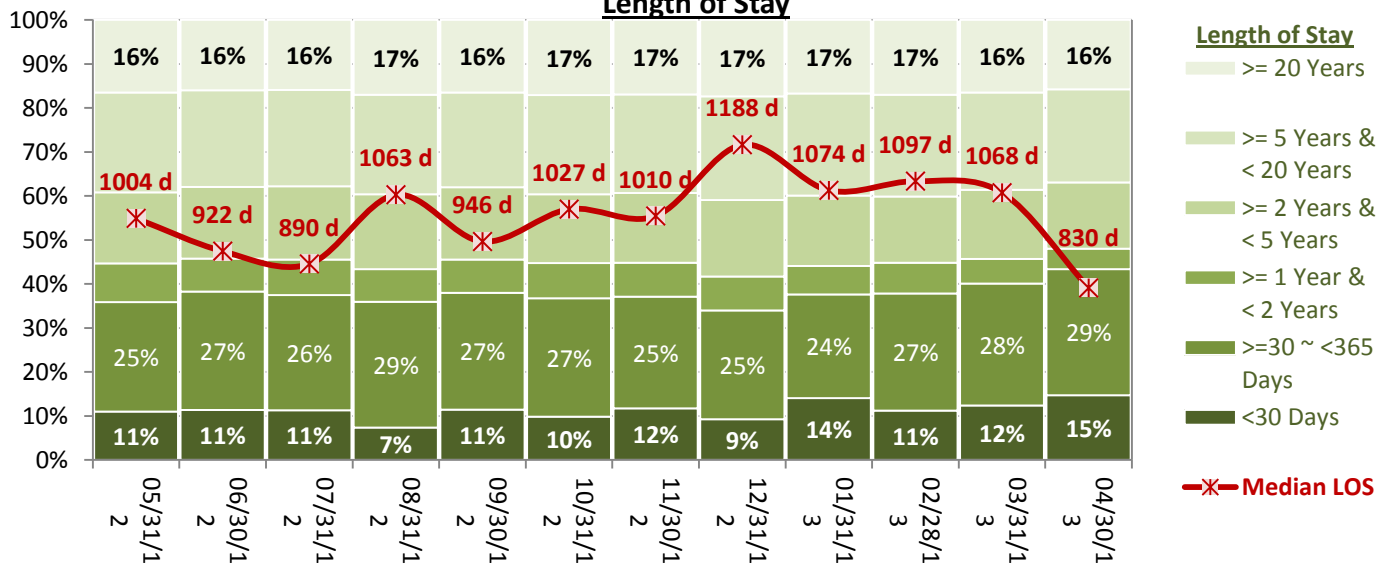
of Individuals by Legal Status (4/30/13)



Age Distribution



Length of Stay



Performance Related Information for Staff & Managers

1. Census, Admissions, Discharges & Transfers

Data Source: Avatar

Updated as of 05/15/13

Category	May-12	Jun-12	Jul-12	Aug-12	Sep-12	Oct-12	Nov-12	Dec-12	Jan-13	Feb-13	Mar-13	Apr-13	Monthly Average	Total (12mths)	Figure	
Admissions	Civil	13	12	16	12	15	12	18	14	22	14	23	19	16	190	Figure 1
	Forensic	22	22	18	14	19	19	18	11	17	14	20	25	18	219	
	Total	35	34	34	26	34	31	36	25	39	28	43	44	34	409	
Discharges	Civil	12	11	17	21	9	12	20	16	21	17	21	13	16	190	Figure 2
	Forensic	15	14	16	18	16	23	19	22	14	15	14	19	17	205	
	Total	27	25	33	39	25	35	39	38	35	32	35	32	33	395	
Net Gain During Month	Civil	1	1	-1	-9	6	0	-2	-2	1	-3	2	6		0	
	Forensic	7	8	2	-4	3	-4	-1	-11	3	-1	6	6		14	
	Total	8	9	1	-13	9	-4	-3	-13	4	-4	8	12		14	
All Individuals on Roll at End of Month	273	282	283	270	279	275	272	259	263	259	267	279	272			
a. Present on Unit	267	275	277	259	275	270	270	255	259	254	261	273	266			
b. On AL	5	5	4	10	4	5	2	4	4	4	5	4	5			
c. On UL	1	2	2	1	0	0	0	0	0	1	1	2	1			
All Individuals on Roll: Daily Average during Month*	271	278	282	276	273	278	273	265	262	259	262	267	271			
a. Present on Unit	267	271	276	270	266	272	267	260	258	255	258	264	266		Figure 3	
b. On AL	2	5	4	5	7	6	6	5	3	3	3	2	4			
c. On UL	2	2	2	1	0	0	0	0	1	0	1	1	0			
Patient Days**	8284	8132	8568	8358	7988	8430	8024	8059	8010	7152	8011	7918	8078	96934		
Inter-Unit Transfers during Month	7	6	3	5	10	7	11	7	8	3	17	17	8	101	Figure 4	
Medical Leaves Initiated during Month	Emergency	18	29	17	21	24	29	17	9	24	23	12	10	19		233
	Non-Emer	34	46	43	16	33	16	24	30	23	16	22	32	28		335
	Total	52	75	60	37	57	45	41	39	47	39	34	42	47	568	
Non-Medical Leaves Initiated during Month	145	142	126	95	103	95	104	96	85	85	70	89	103	1235		
UL Initiated during Month	2	2	3	1	1	4	2	3	1	2	4	2	2	27		
Total Unique Patients Served during Month	298	306	316	309	302	310	306	297	298	298	294	310	304			
30 Day Readmission***	Civil	2	0	0	1	2	0	2	2	3	0	2		1	14	
	Forensic	0	0	1	0	0	1	0	0	0	1	1		0	4	
	Total	2	0	1	1	2	1	2	2	3	1	3		2	18	

* This is the average number of individuals served on a given day for the respective month. Due to rounding from average calculation, numbers from its subcategories a, b, & c may not add up to the total number on this row.

** It counts the number of patients who are present on the unit and excludes those on authorized or unauthorized leave at 11:59pm on a given day.

*** Number of patients returning within 30 days of discharges that occurred during month.

Performance Related Information for Staff & Managers

2. Key Performance Indicators

Data Source: UI DB, ADR DB, Restraint/Seclusion Log, and Avatar

Updated as of 05/15/13

Category	May-12	Jun-12	Jul-12	Aug-12	Sep-12	Oct-12	Nov-12	Dec-12	Jan-13	Feb-13	Mar-13	Apr-13	Monthly Average	NPR* (Sep-11)	Figure
30 Day Readmit (Discharge Cohort)**	Civil	16.7%	0.0%	0.0%	4.8%	22.2%	0.0%	10.0%	12.5%	14.3%	0.0%	9.5%	8.0%		Figure 5
	Forensic	0.0%	0.0%	6.3%	0.0%	0.0%	4.3%	0.0%	0.0%	0.0%	6.7%	7.1%	2.1%		
	Combined	7.4%	0.0%	3.0%	2.6%	8.0%	2.9%	5.1%	5.3%	8.6%	3.1%	8.6%	5.0%	6.9%	
Number of Unusual Incidents	177	157	165	158	175	159	182	171	198	216	235	232	185		Figure 6
UI by Severity	Catastrophe	0	0	0	0	0	0	0	0	0	0	0	0		Figure 7
	High	29	35	30	16	13	24	26	18	26	17	19	22		
	Medium	67	51	28	40	54	58	63	59	60	87	106	64		
	Low	81	71	107	102	108	77	93	94	112	112	110	128	100	
Patient Unusual Incident Rate	19.7	18.9	17.7	18.1	20.2	17.0	21.8	18.7	21.8	28.1	27.8	26.9	21.3		Figure 8
Selected Types of Incidents	Physical Assault	40	34	40	35	40	32	39	37	31	26	32	35	35	Figure 9
	Psych Emergency	19	6	5	7	7	13	15	17	15	13	9	15	12	
	Fall	20	21	25	20	22	9	15	21	24	17	16	16	19	
	Injury	21	26	33	34	25	22	32	29	30	24	20	22	27	
Physical Assaults by Severity	High	10	6	8	3	2	6	8	4	4	1	3	2	5	Figure 10
	Medium	9	17	4	14	7	11	13	15	12	10	14	10	11	
	Low	21	11	28	18	31	15	18	18	15	15	15	23	19	
Patient Injury Rate***	0.36	0.49	0.00	0.48	0.50	0.47	0.25	0.12	0.12	0.00	0.00	0.00	0.24	0.34	Figure 11
Patients with Major Injuries***	3	4	0	4	4	4	2	1	1	0	0	0	2		
Total Patients Injured***	16	21	21	31	23	15	22	24	20	9	12	12	19		
Total Staff Injured***	10	9	19	7	4	11	11	8	11	15	12	10	11		Figure 12
Elopement Rate	0.24	0.25	0.35	0.12	0.13	0.47	0.25	0.37	0.12	0.28	0.50	0.25	0.39	0.12	Figure 13
Medication Variance Rate	1.09	1.11	0.23	1.08	1.00	1.30	1.50	0.50	1.87	6.01	3.50	2.53	1.75		Figure 14
Adverse Drug Reaction Rate	1.21	1.35	0.70	1.20	0.63	1.19	1.37	0.99	1.75	1.54	1.87	1.52	1.27		Figure 15
Missing Med-Admin Documentation	0.29%	0.34%	0.40%	0.27%	0.44%	0.45%	0.36%	0.32%	0.34%	0.37%	0.34%	0.32%	0.35%		Figure 16
Percent of Patients Restrained	0.0%	0.3%	0.6%	0.3%	0.0%	0.0%	0.0%	0.3%	0.0%	0.0%	0.0%	0.0%	0.1%	5.7%	Figure 18
Percent of Patients Secluded	1.3%	0.7%	0.3%	0.0%	0.0%	0.3%	0.7%	0.7%	1.3%	0.7%	0.3%	1.9%	0.7%	2.4%	
Restraint Hours Rate	0.000	0.005	0.001	0.010	0.000	0.000	0.000	0.002	0.000	0.000	0.000	0.000	0.002	0.65	Figure 19
Seclusion Hours Rate	0.031	0.057	0.005	0.000	0.000	0.038	0.016	0.049	0.043	0.042	0.005	0.054	0.028	0.55	

* National Public Rate, NASMHPD Research Institute, National Research Institute (NRI), Data as of June 2012, Published in January 2013.

** Percentage of patients returning within 30 days of discharges that occurred during month

*** Refer to the next page [UI & Medication]

**** As of September 2012, we are temporarily removing the emergency involuntary medication administration data from PRISM because we discovered a technical glitch in Avatar that made this data inaccurate. A fix is under way and this indicator will be reported again as reliable data becomes available.

Performance Related Information for Staff & Managers

3. Unusual Incident & Medication

Data Source: UI DB, ADR DB, and Avatar

Updated as of 05/15/13

Category	May-12	Jun-12	Jul-12	Aug-12	Sep-12	Oct-12	Nov-12	Dec-12	Jan-13	Feb-13	Mar-13	Apr-13	Monthly Average	Total (12mths)	NPR* (Sep-11)
Total Unusual Incidents**	177	157	165	158	175	159	182	171	198	216	235	232	185	2225	
Total Major Unusual Incidents	120	98	85	68	70	97	121	128	129	114	101	116	104	1247	
Patient Involved UI Only**	163	154	152	151	161	143	175	151	175	201	223	213	172	2062	
<i>Patient UI Rate</i>	<i>19.7</i>	<i>18.9</i>	<i>17.7</i>	<i>18.1</i>	<i>20.2</i>	<i>17.0</i>	<i>21.8</i>	<i>18.7</i>	<i>21.8</i>	<i>28.1</i>	<i>27.8</i>	<i>26.9</i>	<i>21.3</i>		
Unique Patients Involved in UI**	116	105	95	97	108	109	107	95	110	117	117	106	107	1282	
Selected Types of Incidents															
Physical Assault	40	34	40	35	40	32	39	37	31	26	32	35	35	421	
Psych Emergency	19	6	5	7	7	13	15	17	15	13	9	15	12	141	
Fall	20	21	25	20	22	9	15	21	24	17	16	16	19	226	
Injury	21	26	33	34	25	22	32	29	30	24	20	22	27	318	
UI by Severity															
Catastrophe	0	0	0	0	0	0	0	0	0	0	0	0	0	0	
High	29	35	30	16	13	24	26	18	26	17	19	15	22	268	
Medium	67	51	28	40	54	58	63	59	60	87	106	89	64	762	
Low	81	71	107	102	108	77	93	94	112	112	110	128	100	1195	
Physical Assaults by Severity															
High	10	6	8	3	2	6	8	4	4	1	3	2	5	57	
Medium	9	17	4	14	7	11	13	15	12	10	14	10	11	136	
Low	21	11	28	18	31	15	18	18	15	15	15	23	19	228	
Total Patients Injured***	16	21	21	31	23	15	22	24	20	9	12	12	19	226	
Patients with Major Injuries***	3	4	0	4	4	4	2	1	1	0	0	0	2	23	
<i>Patient Injury Rate***</i>	<i>0.36</i>	<i>0.49</i>	<i>0.00</i>	<i>0.48</i>	<i>0.50</i>	<i>0.47</i>	<i>0.25</i>	<i>0.12</i>	<i>0.12</i>	<i>0.00</i>	<i>0.00</i>	<i>0.00</i>	<i>0.24</i>		<i>0.34</i>
Total Staff Injured**	10	9	19	7	4	11	11	8	11	15	12	10	11		
Total UL Incident Reports	3	4	3	4	3	3	2	5	4	2	3	2	3	38	
Total ULs Documented in Avatar	2	2	3	1	1	4	2	3	1	2	4	2	2		
<i>Elopement Rate</i>	<i>0.24</i>	<i>0.25</i>	<i>0.35</i>	<i>0.12</i>	<i>0.13</i>	<i>0.47</i>	<i>0.25</i>	<i>0.37</i>	<i>0.12</i>	<i>0.28</i>	<i>0.50</i>	<i>0.25</i>	<i>0.39</i>		<i>0.12</i>
Med Variance (MV) Reports**	9	9	2	9	8	11	12	4	15	43	28	20	14	170	
<i>MV Rate</i>	<i>1.09</i>	<i>1.11</i>	<i>0.23</i>	<i>1.08</i>	<i>1.00</i>	<i>1.30</i>	<i>1.50</i>	<i>0.50</i>	<i>1.87</i>	<i>6.01</i>	<i>3.50</i>	<i>2.53</i>	<i>1.75</i>		
Adverse Drug Reactions Reports	10	11	6	10	5	10	11	8	14	11	15	12	10	123	
<i>ADR Rate</i>	<i>1.21</i>	<i>1.35</i>	<i>0.70</i>	<i>1.20</i>	<i>0.63</i>	<i>1.19</i>	<i>1.37</i>	<i>0.99</i>	<i>1.75</i>	<i>1.54</i>	<i>1.87</i>	<i>1.52</i>	<i>1.27</i>		
Total Med Administrations Scheduled	108557	105239	108563	107540	104812	112293	107901	111670	110726	97488	108150	103057		1285996	
Total Missing Documentations	311	354	433	290	456	505	393	356	375	356	370	326		4525	
<i>Percent of Missing Documentation</i>	<i>0.29%</i>	<i>0.34%</i>	<i>0.40%</i>	<i>0.27%</i>	<i>0.44%</i>	<i>0.45%</i>	<i>0.36%</i>	<i>0.32%</i>	<i>0.34%</i>	<i>0.37%</i>	<i>0.34%</i>	<i>0.32%</i>		<i>0.35%</i>	
Total STAT Orders	81	51	82	38	54	64	61	144	55	34	68	138	73		Figure 17
Total STAT Events****				22	28	35	35	77	30	23	38	71	40		
Total Individuals Involved >=1 STAT				14	24	16	21	21	28	10	16	23	19		
Total Patients with >=3 STAT Events				3	0	3	2	5	4	2	6	6	3		

* National Public Rate, NASMHPD Research Institute, National Research Institute (NRI), Data as of June 2012, Published in January 2013.

** Numbers may change if any additional UI report is made after the data run date from UI database (around the 15th of the following month).

*** Injury is broadly defined to include any type of injuries regardless of the cause or severity level. The total number of patients injured represents all of the reported injuries including minor injuries treated with first aid alone. However, the patient injury rate considers only the number of patient injuries that required beyond first-aid level treatment based on the NRI definition and the patient injury rate is the number of 'major' patient injuries per every 1000 inpatient days

**** One STAT event may involve more than one STAT order for the same patient. Any orders placed within 15 minute timeframe are considered to belong to one STAT event.

Performance Related Information for Staff & Managers

4. Restraint & Seclusion

Data Source: Restraint/Seclusion Log and UI DB (for # of total events and patients) and Avatar (for patient days/hours)

Updated as of 05/15/13

Category	May-12	Jun-12	Jul-12	Aug-12	Sep-12	Oct-12	Nov-12	Dec-12	Jan-13	Feb-13	Mar-13	Apr-13	Monthly Average	Total (12mths)	NPR* (Sep-11)
Number of Restraint Events	0	1	2	1	0	0	0	1	0	0	0	0	0.4	5	
Number of Unique Patients Restrained	0	1	2	1	0	0	0	1	0	0	0	0	0.4		
Percentage of Patients Restrained	0.0%	0.3%	0.6%	0.3%	0.0%	0.0%	0.0%	0.3%	0.0%	0.0%	0.0%	0.0%	0.1%		5.7%
Total Restraint Hours (h:mm)	0:00	1:00	0:13	2:00	0:00	0:00	0:00	0:20	0:00	0:00	0:00	0:00	0:17	3:33	
Restraint Hours Rate	0.000	0.005	0.001	0.010	0.000	0.000	0.000	0.002	0.000	0.000	0.000	0.000	0.002		0.65
Number of Seclusion Events	6	3	1	0	0	5	2	5	7	5	1	10	3.8	45	
Number of Unique Patients Secluded	4	2	1	0	0	1	2	2	4	2	1	6	2.1		
Percentage of Patients Secluded	1.3%	0.7%	0.3%	0.0%	0.0%	0.3%	0.7%	0.7%	1.3%	0.7%	0.3%	1.9%	0.7%		2.4%
Total Seclusion Hours (h:mm)	6:08	11:10	1:00	0:00	0:00	7:40	3:10	9:32	8:12	7:13	1:00	10:18	5:26	65:23	
Seclusion Hours Rate	0.031	0.057	0.005	0.000	0.000	0.038	0.016	0.049	0.043	0.042	0.005	0.054	0.028		0.55

* National Public Rate, NASMHPD Research Institute, National Research Institute (NRI), Data as of June 2012, Published in January 2013.

Performance Related Information for Staff & Managers

5. Major Incidents by Incident Location/Unit

Data Source: UI DB

Updated as of 05/15/13

Category		May-12	Jun-12	Jul-12	Aug-12	Sep-12	Oct-12	Nov-12	Dec-12	Jan-13	Feb-13	Mar-13	Apr-13	Monthly Average	Total (12mths)	Percent
Total Unusual Incidents		177	157	165	158	175	159	182	171	198	216	235	232	185	2225	
Total Major Incidents*		120	98	85	68	70	97	121	128	129	114	101	116	104	1247	100%
Major Incident Location	1A	17	12	4	8	2	11	4	7	7	4	9	5	8	90	7%
	1B	7	10	5	6	6	10	13	10	13	16	6	10	9	112	9%
	1C	12	5	8	6	5	8	9	11	17	6	8	13	9	108	9%
	1D	11	8	9	2	6	2	13	14	17	17	14	16	11	129	10%
	1E	11	18	10	9	7	15	8	18	15	10	20	32	14	173	14%
	1F	14	11	17	4	2	7	17	12	12	13	12	8	11	129	10%
	1G	7	8	9	8	19	12	20	9	7	4	1	5	9	109	9%
	2A	2	0	3	1	4	2	3	1	5	0	1	1	2	23	2%
	2B	1	1	1	3	0	1	7	8	2	1	1	4	3	30	2%
	2C	12	5	2	2	3	9	4	12	6	8	5	3	6	71	6%
	2D	7	10	9	7	3	6	8	10	7	10	2	7	7	86	7%
	TLC	11	4	6	8	4	6	4	9	8	15	14	7	8	96	8%
	Other	8	6	2	4	9	8	11	7	13	10	8	5	8	91	7%
Total Physical Assault Incidents		40	34	40	35	40	32	39	37	31	26	32	35	35	421	100%
Assault Incident Location	1A	7	4	2	4	4	5	1	2	1	1	2	2	3	35	8%
	1B	1	0	3	3	4	1	0	2	0	0	0	2	1	16	4%
	1C	0	1	2	1	1	2	4	1	3	1	1	5	2	22	5%
	1D	4	3	4	2	3	1	9	6	10	6	9	7	5	64	15%
	1E	5	7	8	5	3	4	2	8	6	2	8	4	5	62	15%
	1F	10	4	10	2	2	5	7	2	0	3	3	1	4	49	12%
	1G	2	4	4	6	15	4	6	2	2	0	1	1	4	47	11%
	2A	0	0	0	0	0	0	0	0	0	0	0	0	0	0	0%
	2B	0	0	1	1	0	0	2	3	0	1	0	1	1	9	2%
	2C	2	3	1	1	0	2	0	2	3	0	1	1	1	16	4%
	2D	4	8	2	7	3	5	5	8	4	4	1	6	5	57	14%
	TLC	3	0	2	3	5	2	2	1	2	8	6	4	3	38	9%
	Other	2	0	1	0	0	1	1	0	0	0	0	1	1	6	1%

Performance Related Information for Staff & Managers

5. Major Incidents by Incident Location/Unit

Data Source: UI DB

Updated as of 05/15/13

Category		May-12	Jun-12	Jul-12	Aug-12	Sep-12	Oct-12	Nov-12	Dec-12	Jan-13	Feb-13	Mar-13	Apr-13	Monthly Average	Total (12mths)	Percent
Total Fall Incidents		20	21	25	20	22	9	15	21	24	17	16	16	19	226	100%
Fall Incident Location	1A	8	9	3	4	3	1	3	4	3	0	3	1	4	42	19%
	1B	1	4	2	5	3	2	4	6	5	7	4	2	4	45	20%
	1C	0	0	3	1	0	1	1	1	1	1	0	1	1	10	4%
	1D	0	0	4	0	0	1	1	1	0	2	1	3	1	13	6%
	1E	3	5	3	1	2	0	1	1	1	0	2	1	2	20	9%
	1F	0	0	0	0	0	0	1	0	5	0	0	0	1	6	3%
	1G	1	0	2	3	8	1	1	0	0	0	0	2	2	18	8%
	2A	0	0	1	0	0	0	2	1	2	0	0	0	1	6	3%
	2B	0	0	0	1	1	0	0	4	0	1	0	1	1	8	4%
	2C	3	0	0	0	2	1	0	1	0	2	0	0	1	9	4%
	2D	0	2	6	3	1	0	0	1	1	1	0	0	1	15	7%
	TLC	3	1	0	2	0	0	1	0	2	2	5	3	2	19	8%
	Other	1	0	1	0	2	2	0	1	4	1	1	2	1	15	7%
Total Injury Incidents		21	26	33	34	25	22	32	29	30	24	20	22	27	318	100%
Injury Incident Location	1A	3	5	1	4	2	4	0	2	2	0	1	1	2	25	8%
	1B	1	2	4	3	1	2	3	3	0	4	2	2	2	27	8%
	1C	0	0	3	1	0	2	2	1	1	0	0	1	1	11	3%
	1D	3	3	6	1	0	1	6	6	8	8	6	4	4	52	16%
	1E	2	3	2	4	3	2	1	2	6	2	4	4	3	35	11%
	1F	4	2	4	1	1	2	8	2	0	2	1	1	2	28	9%
	1G	1	3	2	5	9	3	4	2	3	0	1	2	3	35	11%
	2A	0	0	0	0	0	0	1	0	1	0	0	0	0	2	1%
	2B	0	0	0	1	0	0	0	2	0	1	0	1	0	5	2%
	2C	0	1	4	1	2	1	3	2	0	1	1	0	1	16	5%
	2D	3	5	4	7	2	1	2	3	3	0	0	1	3	31	10%
	TLC	2	0	2	5	2	2	2	2	2	1	3	3	2	26	8%
	Other	2	2	1	1	3	2	0	2	5	3	1	3	2	25	8%

* Not every incident is a major incident. This counts only those incidents that were classified to be major based on the policy.

Performance Related Information for Staff & Managers

6. Demographic Information of Individuals in Care

Data Source: Avatar

Updated as of 05/15/13

Category	Sub-group	May-12	Jun-12	Jul-12	Aug-12	Sep-12	Oct-12	Nov-12	Dec-12	Jan-13	Feb-13	Mar-13	Apr-13	Monthly Average	Percent*
Total Active (on Roll) at End of Month*		273	282	283	270	279	275	272	259	263	259	267	279	272	
Gender	Female	71	73	70	64	71	74	72	70	71	71	77	80	72	26.5%
	Male	202	209	213	206	208	201	200	189	192	188	190	199	200	73.5%
Age	Median Age (Years)	55 yrs	55 yrs	55 yrs	55 yrs	55 yrs	55 yrs	55 yrs	56 yrs	55 yrs	56 yrs	56 yrs	55 yrs	55 yrs	
	<30 years old	20	23	23	22	25	23	23	17	22	15	15	19	21	7.6%
	>=30 and <40 years old	36	37	33	29	28	27	27	27	26	26	31	31	30	11.0%
	>=40 and <50 years old	42	45	46	43	43	45	37	42	40	42	45	48	43	15.9%
	>=50 and <60 years old	93	92	94	89	91	88	97	84	88	90	89	89	90	33.2%
	>=60 years old	82	85	87	87	92	92	88	89	87	86	87	92	88	32.3%
Legal Status of Individuals on Roll at End of Month	Emergency	17	20	21	16	22	21	19	21	20	19	22	29	21	7.6%
	Inpatient Commitment	25	26	27	26	24	23	23	21	21	21	23	21	23	8.6%
	Outpatient Commitment	28	25	20	20	21	23	21	24	23	26	23	24	23	8.5%
	Voluntary	42	41	43	42	43	46	50	46	48	46	44	45	45	16.4%
	Civil Sub-total	112	112	111	104	110	113	113	112	112	112	112	119	112	41.2%
	DC Exam	49	57	59	56	59	55	50	39	44	38	48	54	51	18.6%
	Mentally Incompetent	7	8	8	6	5	3	3	3	5	5	4	1	5	1.8%
	NGBRI - DC	89	91	92	91	92	91	93	92	90	92	89	90	91	33.5%
	NGBRI - US	10	10	9	9	9	9	9	9	8	8	10	10	9	3.4%
	NGBRI - VI	1	1	1	1	1	1	1	1	1	1	1	1	1	0.4%
Dual Commitment	3	1	1	1	1	1	1	1	1	1	1	2	1	0.5%	
Sexual Psychopath (Miller Ac	2	2	2	2	2	2	2	2	2	2	2	2	2	0.7%	
Forensic Sub-total	161	170	172	166	169	162	159	147	151	147	155	160	160	58.8%	
Length of Stay	Median LOS (Days)	1004 d	922 d	890 d	1063 d	946 d	1027 d	1010 d	1188 d	1074 d	1097 d	1068 d	830 d	1010 d	
	Average LOS (Days)	3047 d	2971 d	2976 d	3116 d	3030 d	3093 d	3103 d	3248 d	3152 d	3181 d	3093 d	2973 d	3082 d	
	<30 Days	30	32	32	20	32	27	32	24	37	29	33	41	31	11.3%
	>=30 ~ <365 Days	68	76	74	77	74	74	69	64	62	69	74	80	72	26.4%
	>= 1 Year & < 2 Years	24	21	23	20	21	22	21	20	17	18	15	13	20	7.2%
	>= 2 Years & < 5 Years	44	46	47	46	46	43	43	45	42	39	42	42	44	16.1%
	>= 5 Years & < 20 Years	62	62	62	61	60	62	61	61	61	60	59	59	61	22.4%
>= 20 Years	45	45	45	46	46	47	46	45	44	44	44	44	45	16.6%	

* Counts the total number of individuals who are on the hospital roll at end of each month. This number serves as denominator to calculate percentage of each group.