



Government of the District of Columbia
Department of Behavioral Health (DBH)



PRISM

Performance Related Information for Staff and Managers



November 2018

Data & Performance Management (DPM)

Table of Contents

1. Admissions to SEH 1
2. Discharges from SEH 1
3. Average Daily Census..... 2
4. Transfers..... 2
5. 30-Day Readmission Rate 2
6. Unusual Incidents 3
7. Patient-Involved Unusual Incidents 3
8. Admissions vs. Patient UI Rate 4
9. Unusual Incidents by Severity 4
10. Selected Types of Incidents 4
11. Physical Assaults by Severity 5
12. Patient Injuries 5
13. Staff Injuries 5
14. Patient and Staff Falls 6
15. Percent of Patients Restrained or Secluded 6
16. Restraint Hours Rate & Seclusion Hours Rate 6
17. Elopements..... 7
18. Reported Medication Variance Events 8
19. Reported Adverse Drug Reactions 8
20. Percent of Missing Documentation on Med-Administration 9
21. Medication Refusal Rate 9
22. Number of STAT Events and Individuals Involved 9
23. Percentage of SiteFM Work Orders Completed within 3 Days 10
24. Demographics..... 11
25. Length of Stay 13

Appendix Tables

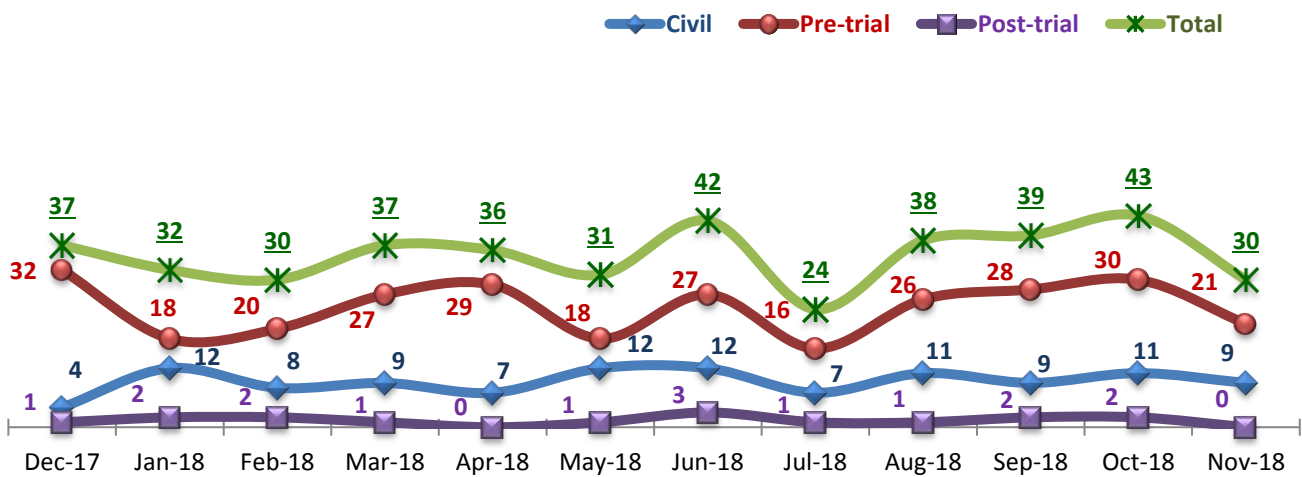
Data Disclaimer

The primary source of data extracted and analyzed herein is Avatar, the Saint Elizabeths Hospital's electronic medical record system. Additional data sources include, but are not limited to, the Hospital's Unusual Incident Database and SiteFM. Data reflect information as entered in each system by users. Data and Performance Management (DPM) has made reasonable efforts to ensure that data and its accompanying information are as accurate and up-to-date as possible at the time of analysis and publication, but does not guarantee the accuracy, reliability, or completeness of data. DPM is not liable for any misinterpretation or misuse of the data. Use of any information from PRISM must be fully acknowledged and/or cited. Use of PRISM data for anything other than patient care determinations or management of the services provided within the hospital (including external publications, research papers, presentations, etc.) is prohibited without written permission from the Chief Quality and Data Manager Officer at the Saint Elizabeths Hospital.

Key Trends: Admissions, Discharges, Transfers, Census, and Readmissions (1 - 5)

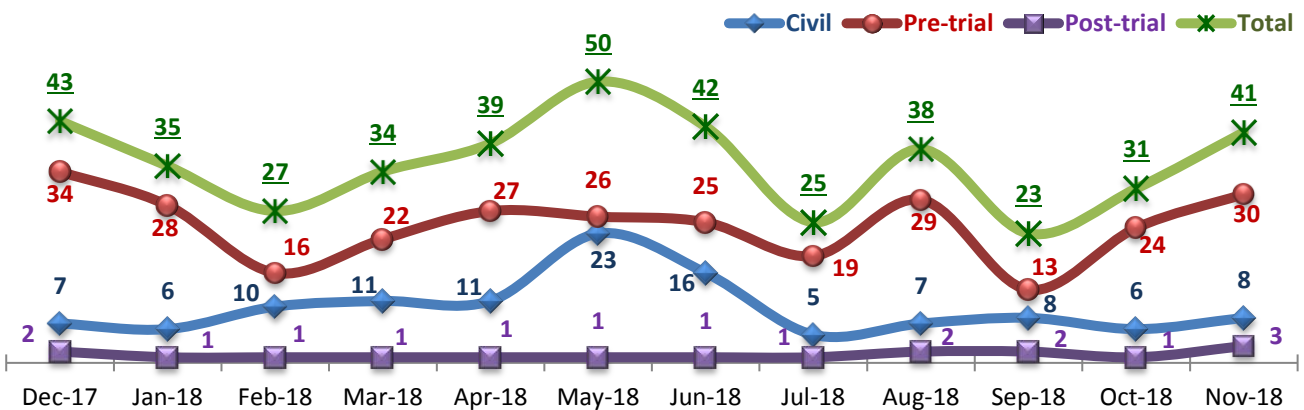
- The total number of Admissions to SEH was 30; a decrease of 13 from last month (43).
- The total number of Discharges from SEH substantially increased by 10 (31 to 41). Pre-trial discharges also increased by 6 (24 to 30) and Civil discharges increased by 2 (29 to 31).
- The Average Daily Census increased from 269 to 274.
- Inter-Unit Transfers decreased by 9 (from 21 to 12).
- There were no reported 30-day readmissions for this month, November.

1. Admissions to SEH



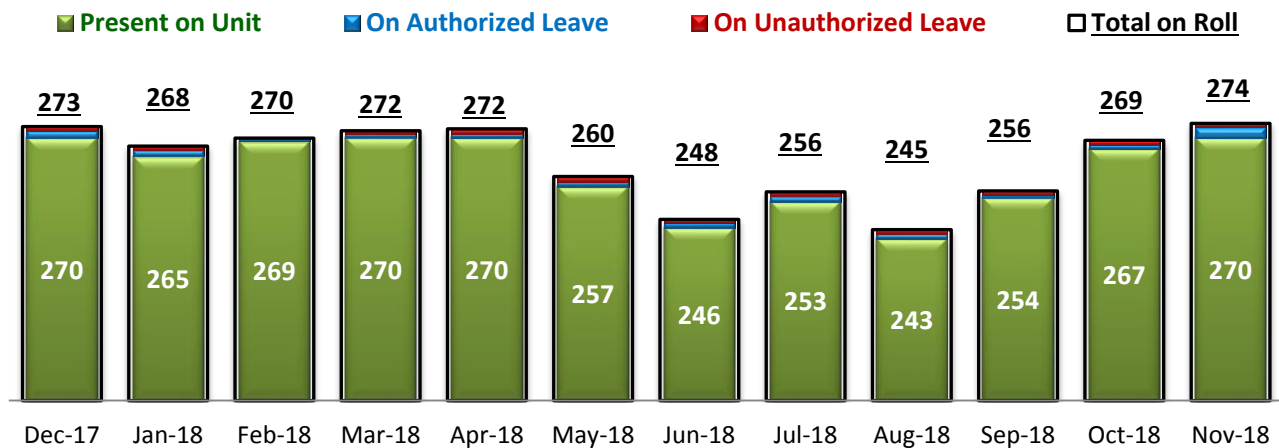
* Number of admissions to SEH inpatient program, including transfers from forensic outpatient to inpatient program.

2. Discharges from SEH



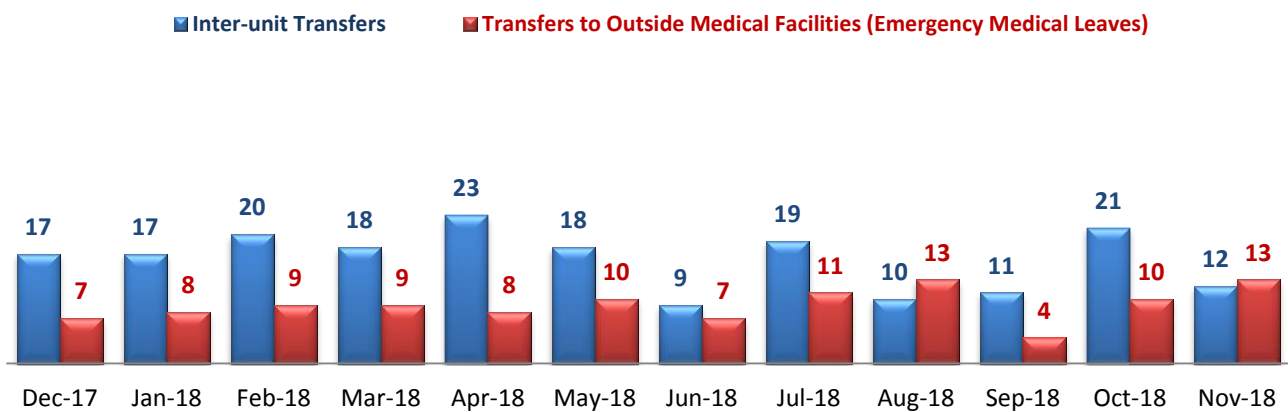
* Number of discharges from SEH inpatient program, including transfers from inpatient to forensic outpatient program.

3. Average Daily Census



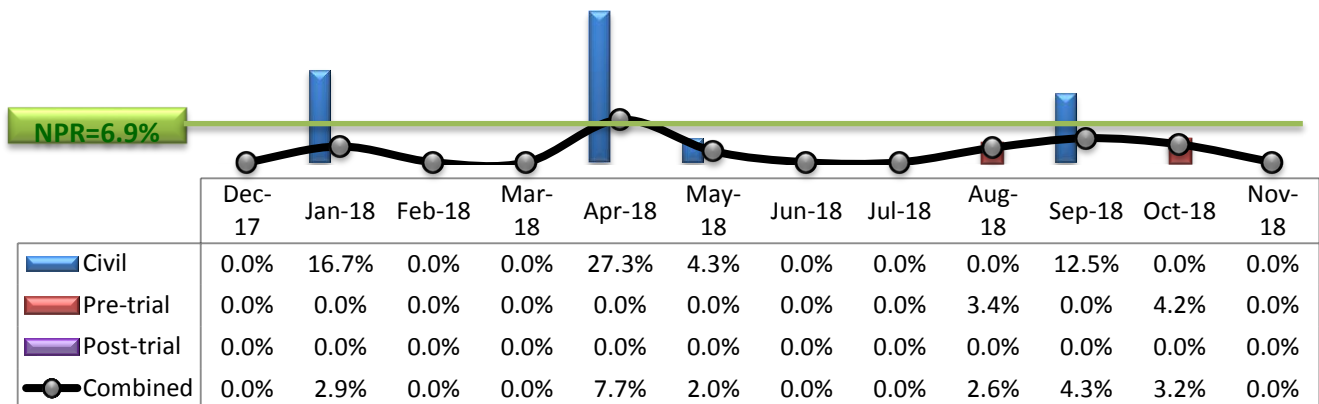
* Data above is the daily average number of individuals counted at 11:59 PM every day during each month.

4. Transfers



* Number of inter-unit transfers that occurred during month and number of emergency medical leaves that were initiated during month.

5. 30-Day Readmission Rate



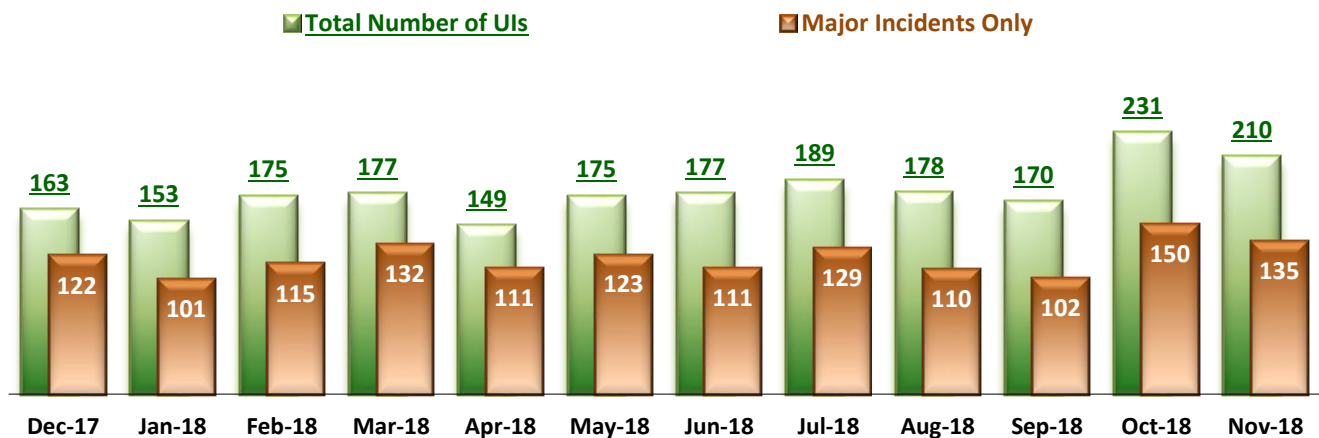
* Percent of discharges that returned to SEH within 30 days of discharges. It does not include those who may have been re-hospitalized at another psychiatric facility. This measure requires 30-day observation following discharge.

** The post-trial denominators (discharges) per month range only between one and six, making the monthly re-admission rate high when there is any. For example, in December 2014, there was only one post-trial discharge, which was readmitted within 30 days. Thus, the 30-day readmission rate for post-trial discharge at that time was 100%.

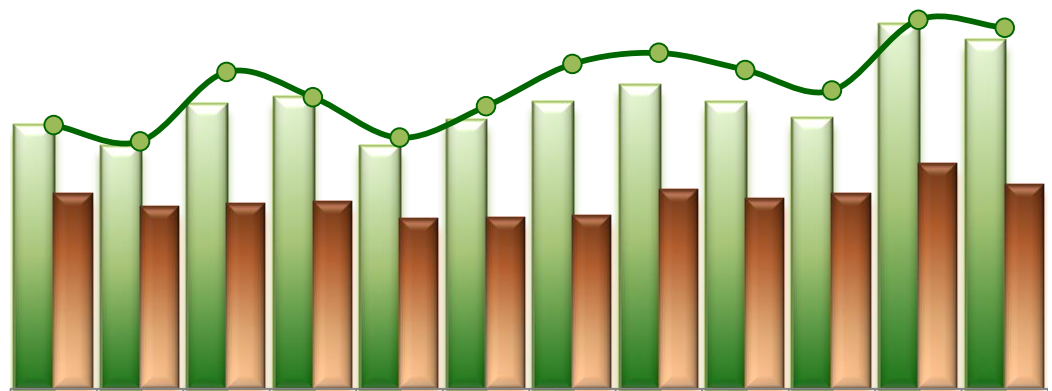
Key Trends: Unusual Incidents (6 - 17)

- Risk Management received 210 Unusual Incident (UI) reports in November, a slight decrease from October (231).
- For Unusual Incidents by Severity, there were decreases for all groups: Low group (111 to 103), the Medium group (64 to 61), and the High group (53 to 44).
- The total number of incidents by type included: Decreases for all types - Physical Assault (58 to 49); Psychiatric Emergencies (77 to 71); Falls (28 to 17); Aggressive Behavior (93 to 85); and Injuries (25 to 23).
- Staff Injuries increased by 1 (7 to 8), while Patient Injuries decreased (from 18 to 16).
- The percent of patients secluded decreased (6.8% to 5.5%), as well as patients restrained (15.3% to 10.1%).

6. Unusual Incidents



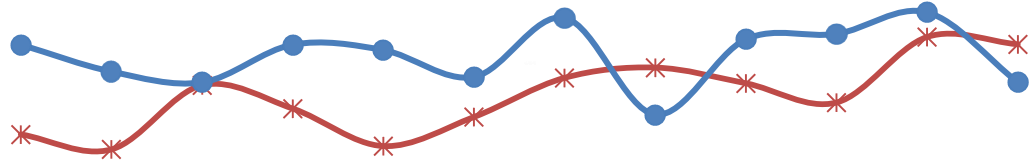
7. Patient-Involved Unusual Incidents



	Dec-17	Jan-18	Feb-18	Mar-18	Apr-18	May-18	Jun-18	Jul-18	Aug-18	Sep-18	Oct-18	Nov-18
# of Patient-Involved UIs	152	140	164	168	140	155	165	175	165	156	210	201
# of Unique Patients in UI	113	105	107	108	98	99	100	115	110	113	130	118
Patient UI Rate	18.1	17.0	21.8	20.1	17.3	19.4	22.3	23.1	21.9	20.5	25.4	24.8

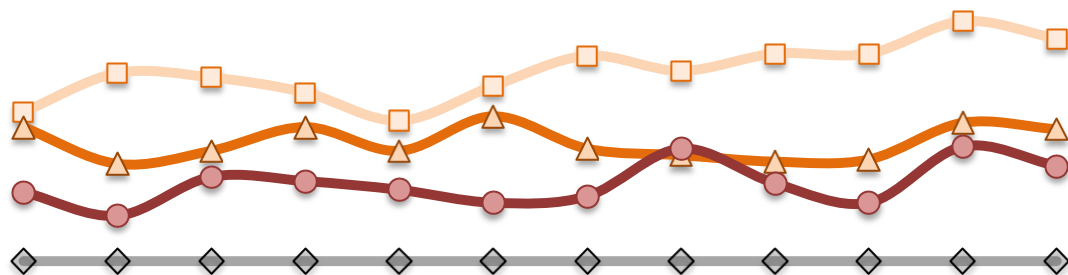
* The patient UI rate is the number of patient-involved unusual incidents reported for every 1000 inpatient days.

8. Admissions vs. Patient UI Rate



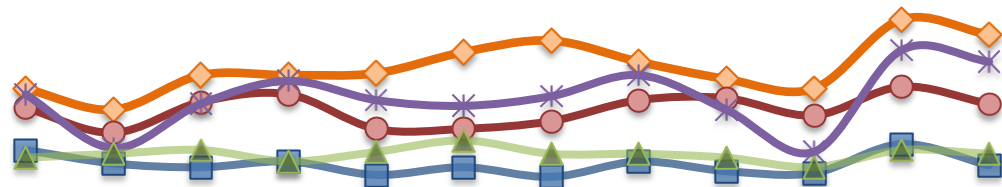
	Dec-17	Jan-18	Feb-18	Mar-18	Apr-18	May-18	Jun-18	Jul-18	Aug-18	Sep-18	Oct-18	Nov-18
✱ Patient UI Rate	18.1	17.0	21.8	20.1	17.3	19.4	22.3	23.1	21.9	20.5	25.4	24.8
● Admission	37	32	30	37	36	31	42	24	38	39	43	30

9. Unusual Incidents by Severity



	Dec-17	Jan-18	Feb-18	Mar-18	Apr-18	May-18	Jun-18	Jul-18	Aug-18	Sep-18	Oct-18	Nov-18
□ 1) Low	69	87	85	78	65	81	95	88	96	96	111	103
△ 2) Medium	62	45	51	62	51	67	52	49	46	47	64	61
● 3) High	32	21	39	37	33	27	30	52	36	27	53	44
◇ 4) Catstrp	0	0	0	0	0	0	0	0	0	0	0	0
Total UI	163	153	175	177	149	175	177	189	178	170	231	210

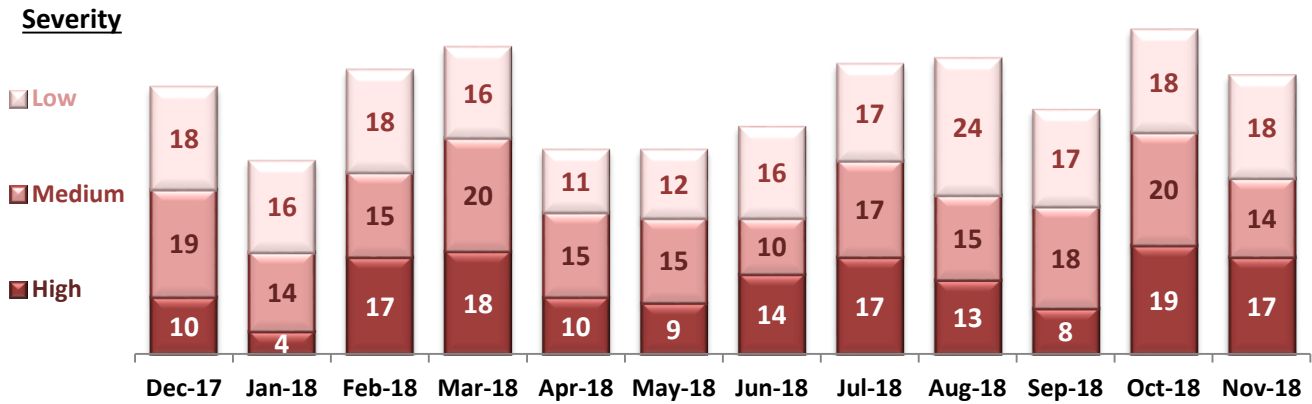
10. Selected Types of Incidents



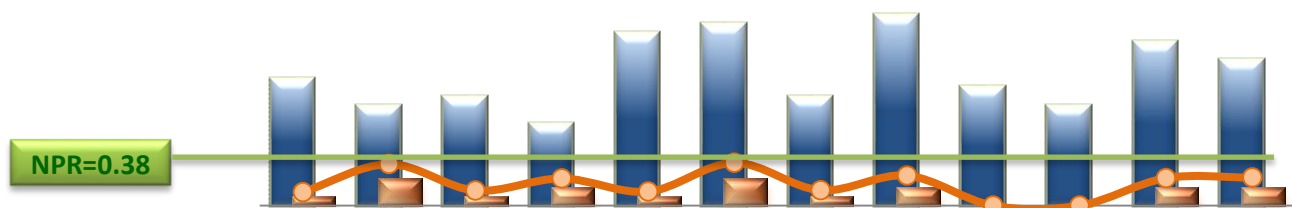
	Dec-17	Jan-18	Feb-18	Mar-18	Apr-18	May-18	Jun-18	Jul-18	Aug-18	Sep-18	Oct-18	Nov-18
◇ Aggressive Behavior	57	46	64	64	65	76	82	71	62	57	93	85
● Physical Assault	47	34	50	54	36	36	40	51	52	43	58	49
✱ Pysch Emerg.	54	26	49	61	51	48	53	64	46	24	77	71
■ Fall	25	18	16	19	12	16	11	19	14	13	28	17
▲ Injury	21	23	25	19	24	30	23	23	21	16	25	23

* These are incident types that are frequently reported. Some incidents may be counted in multiple categories. For example, a physical assault incident that accompanied psychiatric emergency and injury is counted under psychiatric emergency and injury as well as under physical assault. Injury is broadly defined to include any type of injury, regardless of the cause or severity level.

11. Physical Assaults by Severity



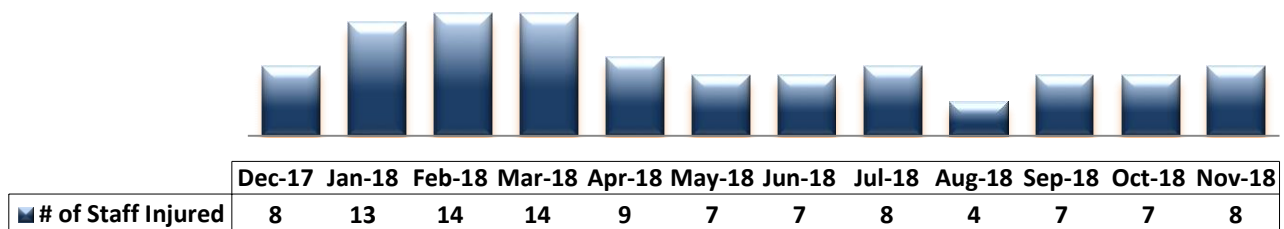
12. Patient Injuries



	Dec-17	Jan-18	Feb-18	Mar-18	Apr-18	May-18	Jun-18	Jul-18	Aug-18	Sep-18	Oct-18	Nov-18
Total Pts Injured	14	11	12	9	19	20	12	21	13	11	18	16
Major Pt Injuries*	1	3	1	2	1	3	1	2	0	0	2	2
Patient Injury Rate	0.12	0.36	0.13	0.24	0.12	0.38	0.14	0.26	0.00	0.00	0.24	0.25

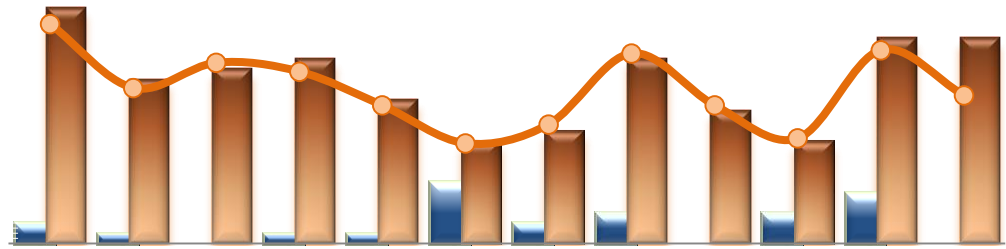
* Injury is broadly defined to include any type of injuries regardless of the cause or severity level. The total number of patients injured represents all of the reported injuries including minor injuries treated with first aid alone. However, the patient injury rate considers only the number of patient injuries that are required beyond first-aid level treatment based on the NRI definition and the patient injury rate is the number of 'major' patient injuries per every 1000 inpatient days

13. Staff Injuries



* Injury is broadly defined to include any type of injuries regardless of the cause or severity level. The total number of staff injured represents all of the reported staff injuries including minor injuries treated with first aid alone.

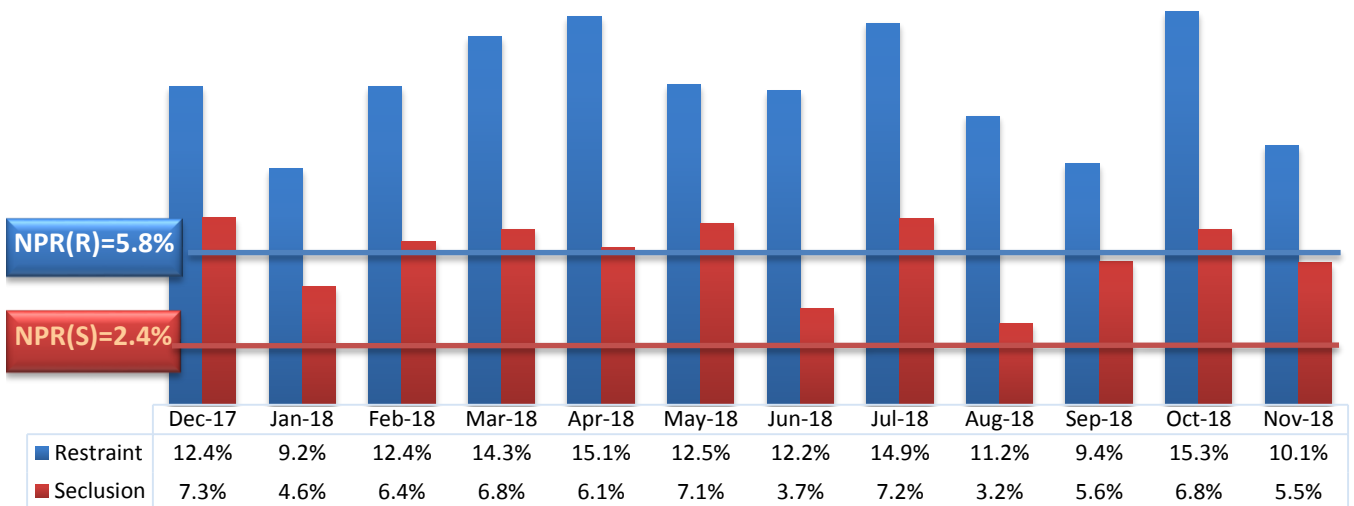
14. Patient and Staff Falls



	Dec-17	Jan-18	Feb-18	Mar-18	Apr-18	May-18	Jun-18	Jul-18	Aug-18	Sep-18	Oct-18	Nov-18
Total Staff who Fell	2	1	0	1	1	6	2	3	0	3	5	0
Total Patients who Fell	23	16	17	18	14	10	11	18	13	10	20	20
Patient Fall Rate	2.74	1.95	2.26	2.15	1.73	1.25	1.49	2.38	1.73	1.31	2.42	1.85

* The patient fall rate is the number of patient falls per every 1000 inpatient days.

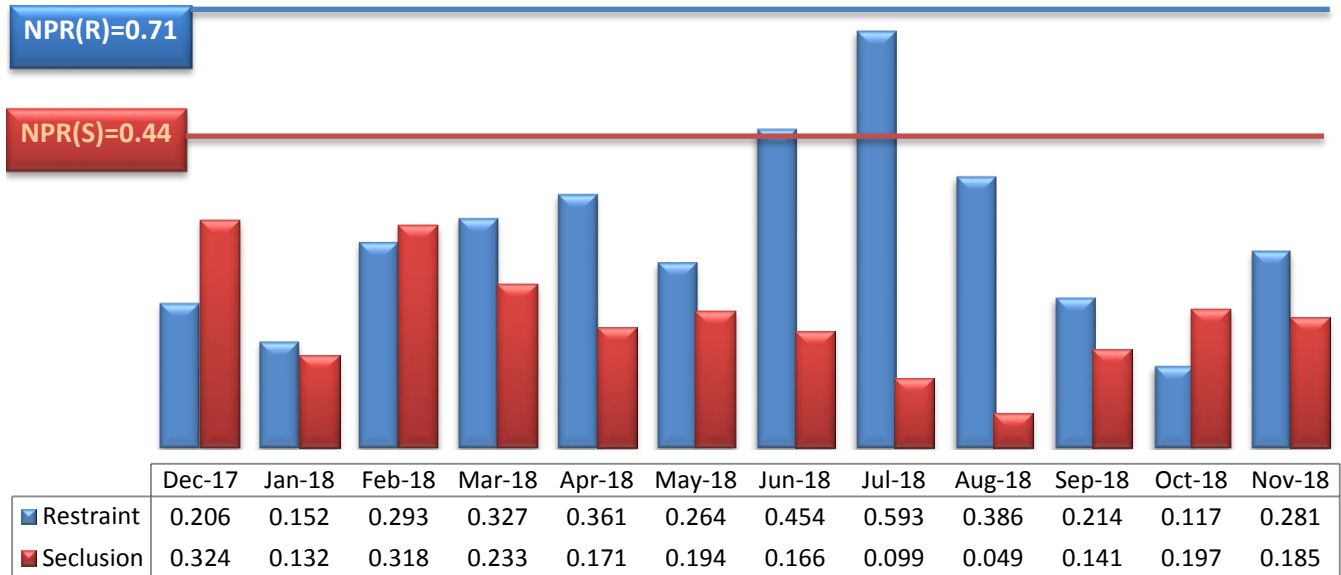
15. Percent of Patients Restrained or Secluded



	Dec-17	Jan-18	Feb-18	Mar-18	Apr-18	May-18	Jun-18	Jul-18	Aug-18	Sep-18	Oct-18	Nov-18
Restraint	12.4%	9.2%	12.4%	14.3%	15.1%	12.5%	12.2%	14.9%	11.2%	9.4%	15.3%	10.1%
Seclusion	7.3%	4.6%	6.4%	6.8%	6.1%	7.1%	3.7%	7.2%	3.2%	5.6%	6.8%	5.5%

Percent of unique patients who were restrained at least once and percent of unique patients who were secluded at least once. The denominator includes all individuals who were served in care 1+ day during month.

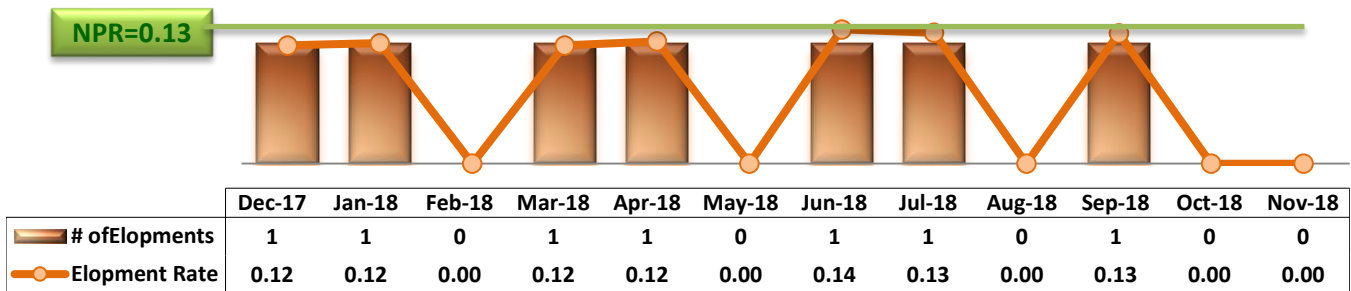
16. Restraint Hours Rate & Seclusion Hours Rate



* Restraint/Seclusion Hours Rate: Number of hours spent in restraint/seclusion for every 1000 inpatient hours.

** The duration of each physical hold event is counted as 1 minute as a physical hold is ordered and used only as a temporary intervention that lasts less than a minute to break up any physical conflicts or to administer emergency medications.

17. Elopements

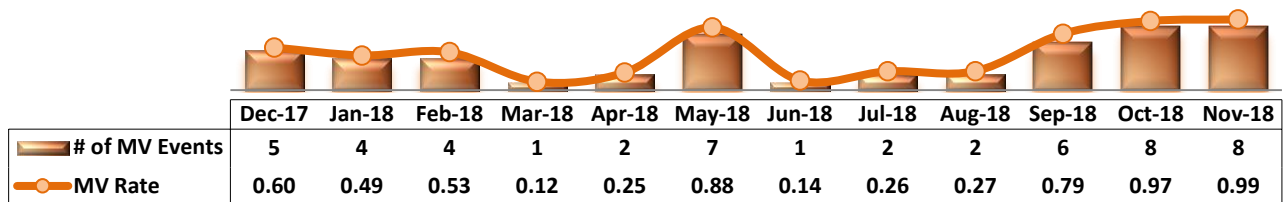


* Data herein counts the number of unauthorized leaves for any duration that were initiated during month and were recorded in Avatar. The elopement rate is the number of those unauthorized leaves that occurred for every 1000 inpatient days.

Key Trends: Medication Documentation, MV, ADR, and STAT (18 - 22)

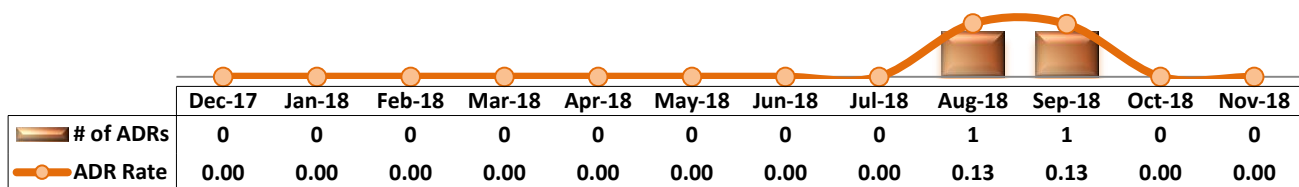
- The average number of Medication Variance Events (MV) is 4 occurrences per month.
- There were no reported adverse drug reactions for this month, November 2018.
- Percent of Missing Documentation decreased slightly from 0.56% to 0.55%.
- Medication Refusal Rate also decreased slightly from 5.96% to 5.42%.

18. Reported Medication Variance Events



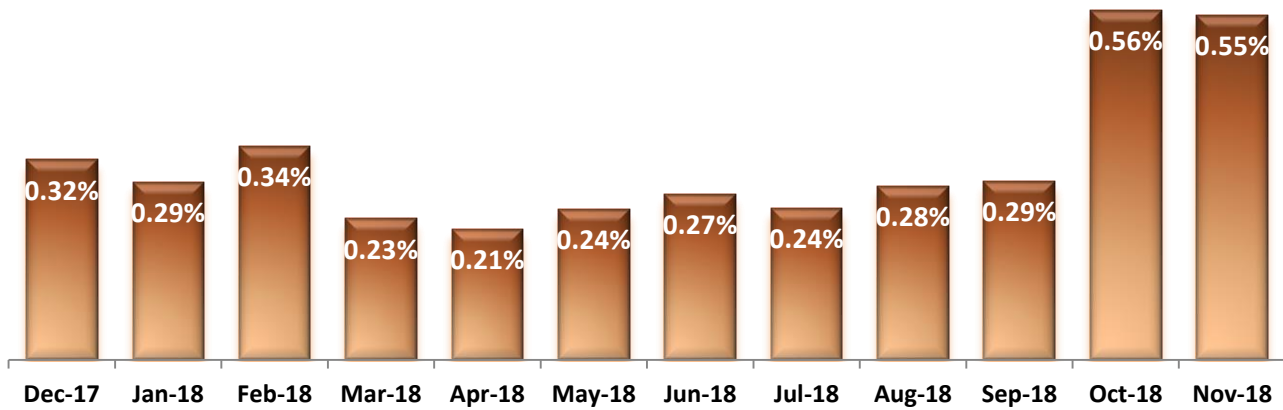
* MV Rate: Number of reported medication variance events that occurred for every 1000 inpatient days.

19. Reported Adverse Drug Reactions

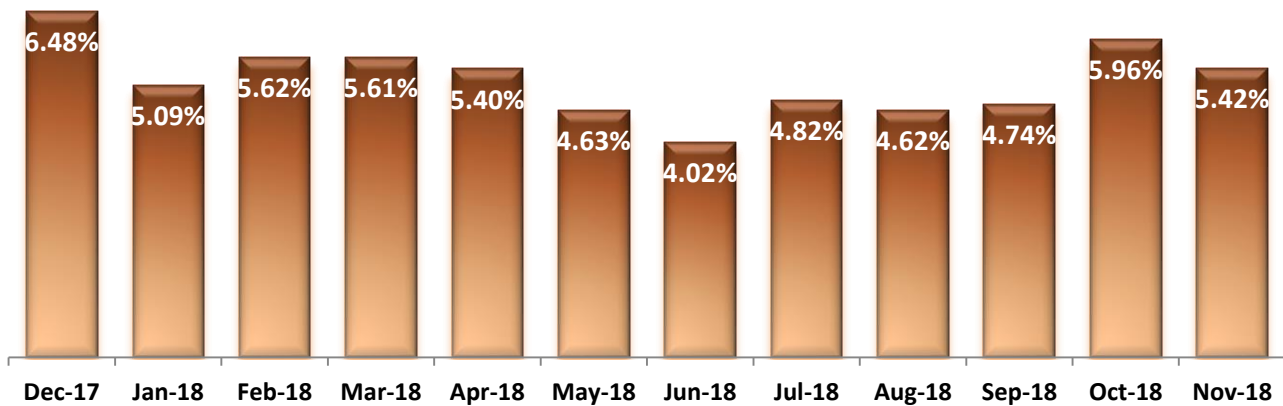


* ADR Rate: Number of reported adverse drug reaction events that occurred for every 1000 inpatient days.

20. Percent of Missing Documentation on Med-Administration

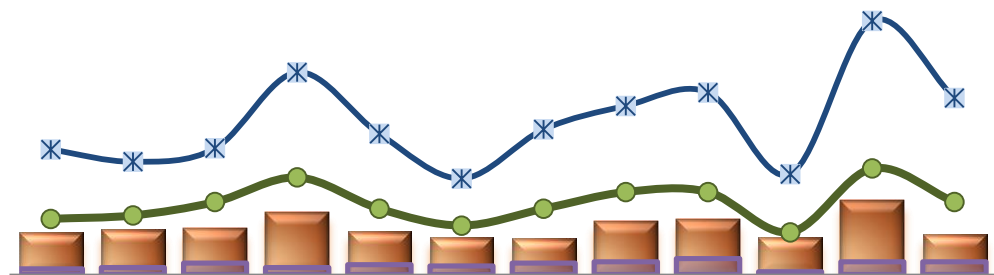


21. Medication Refusal Rate*



* Medication Refusal Rate: the number of refused medication doses divided by the total number of doses scheduled for administration.

22. Number of STAT Events and Individuals Involved

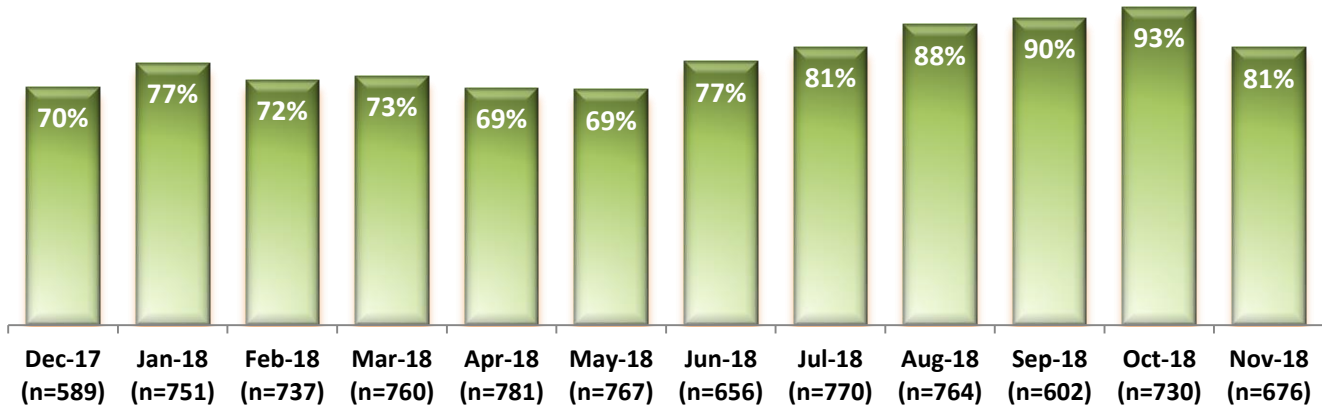


	Dec-17	Jan-18	Feb-18	Mar-18	Apr-18	May-18	Jun-18	Jul-18	Aug-18	Sep-18	Oct-18	Nov-18
IICs w/ >=1 STAT	29	31	32	43	30	26	25	37	38	26	51	28
IICs w/ >=3 STAT Events	4	5	8	5	7	6	8	9	11	2	9	9
Total STAT Events	50	53	65	87	59	44	59	74	74	38	95	65
Total STAT Orders	112	101	113	181	126	86	130	151	163	90	227	158

Key Trends: Environment of Care (23)

- Eighty-one percent (81%) of the work orders submitted in November were completed within 3 days, indicating a steady increase over the past months.

23. Percentage of SiteFM Work Orders Completed within 3 Days

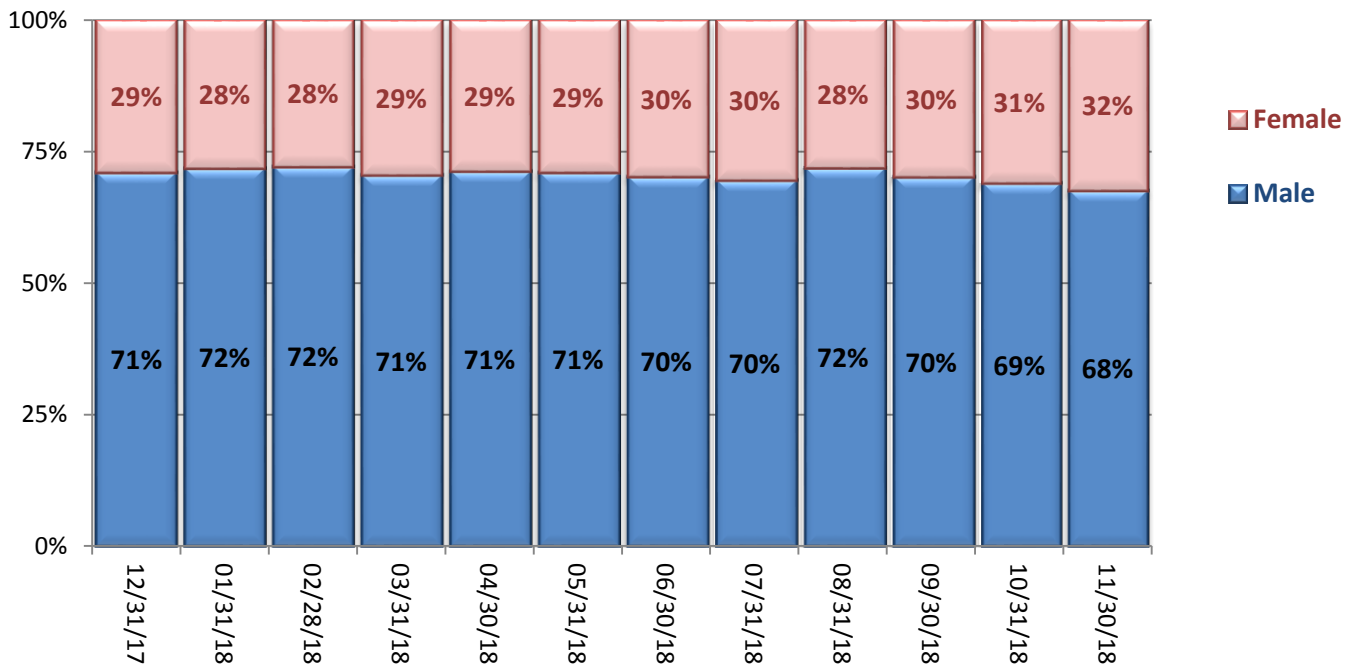


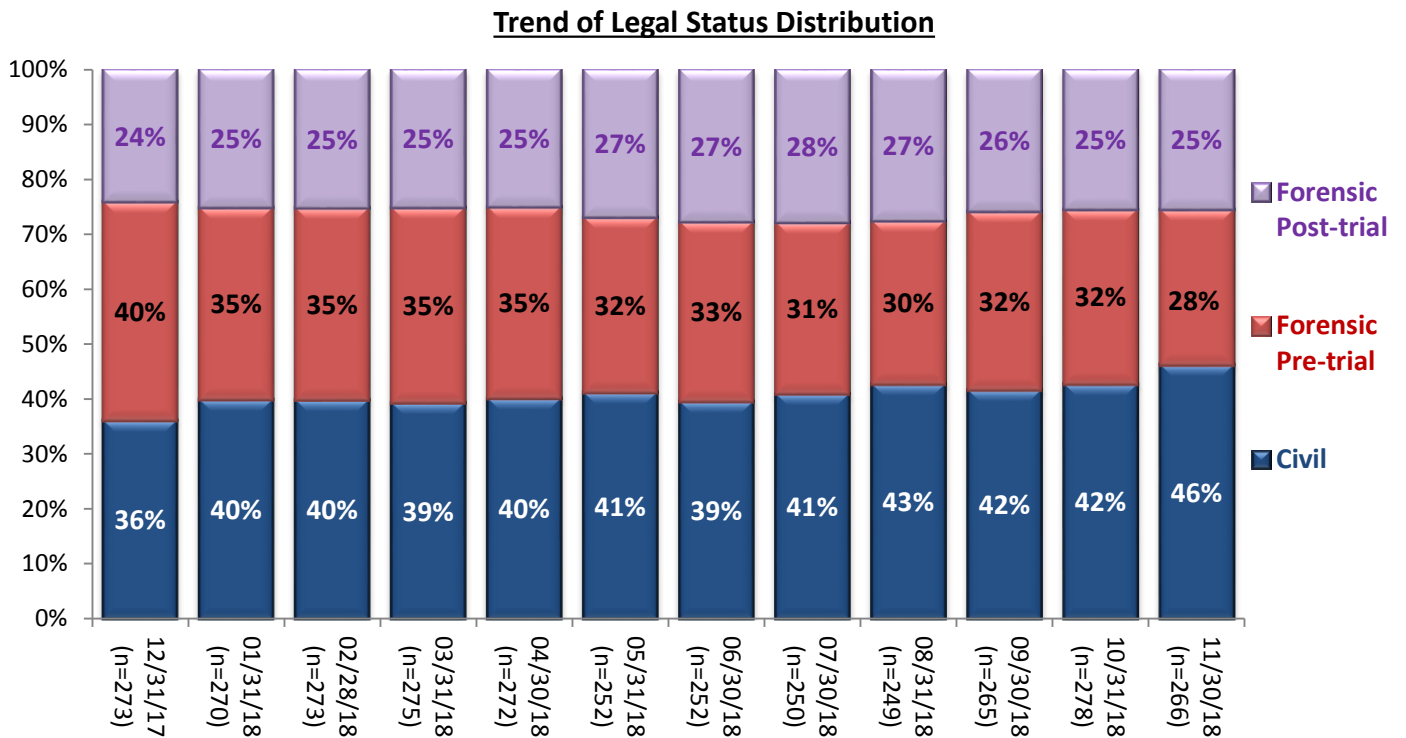
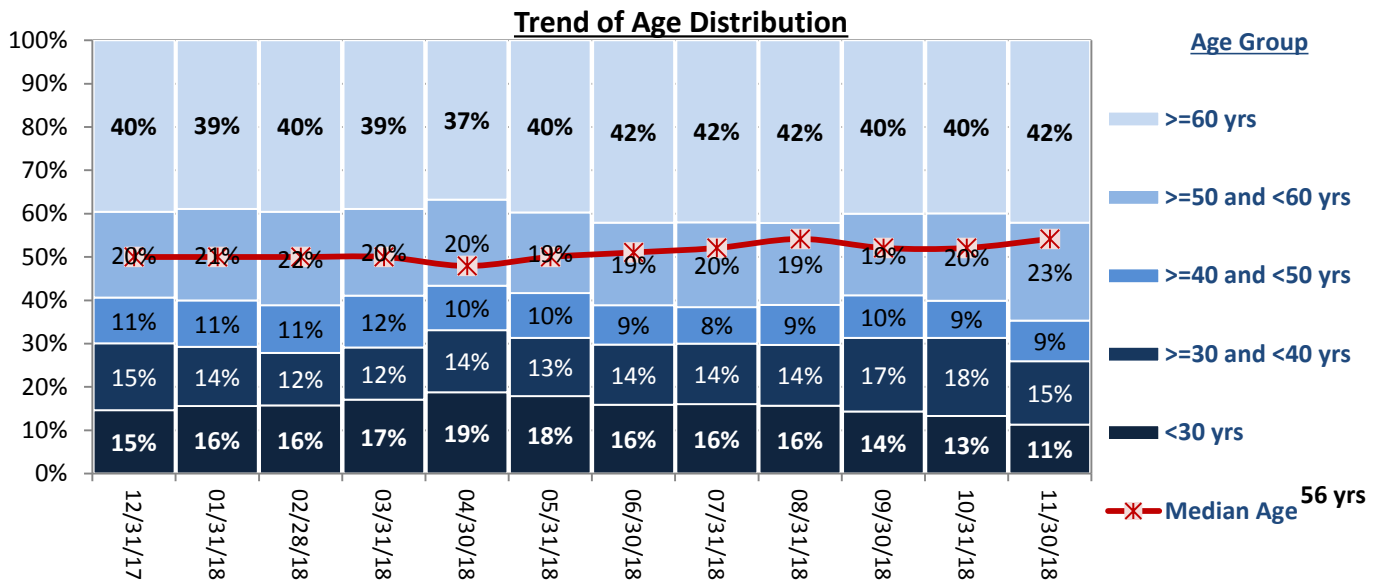
Key Trends: Demographics, Legal Status, and Length of Stay (24 - 25)

- There remains no notable changes in the gender, age, and legal status distribution.
- Forty percent (40%) of patients' Length of Stay (LOS) is between 30 days and 364 days.
- For all individuals in care, individuals with a pre-trial legal status, and individuals with a post-trial legal status, the average LOS and median LOS increased.
- For individuals with a civil legal status, the average LOS and median LOS decreased.

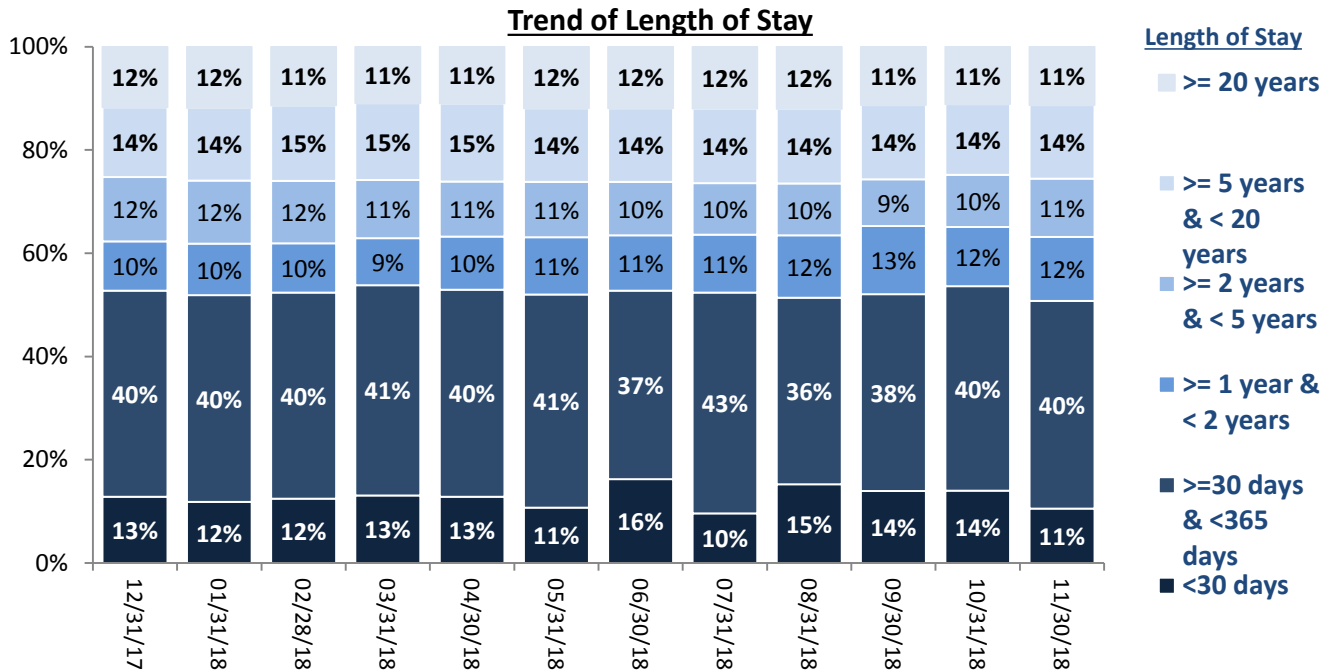
24. Demographics

Trend of Gender Distribution

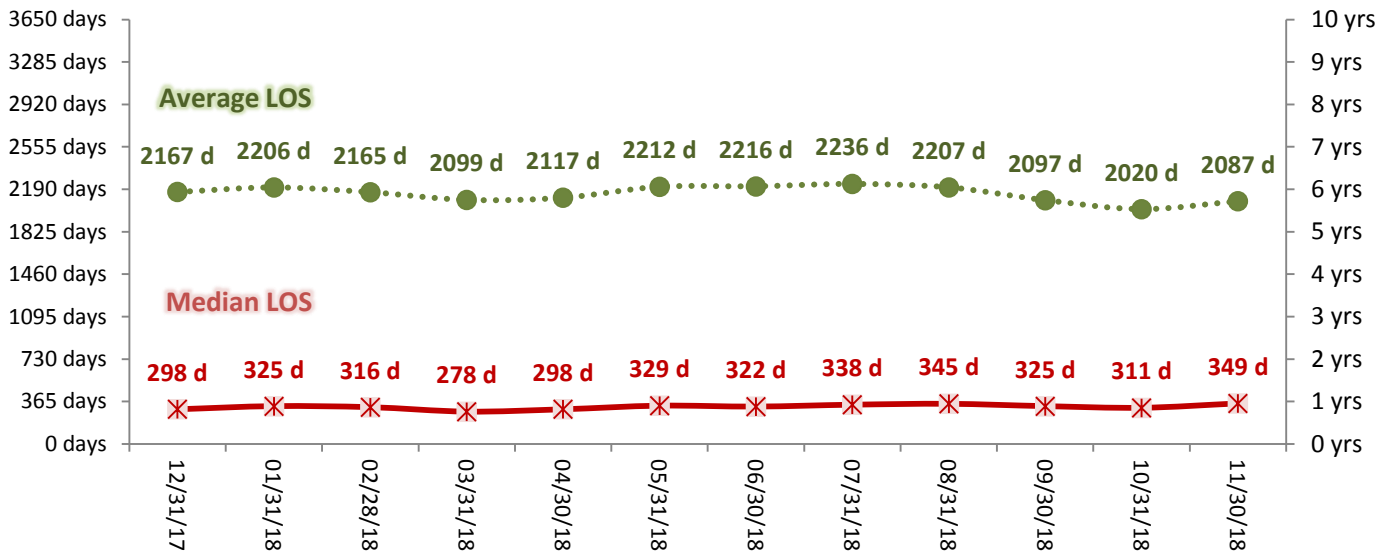




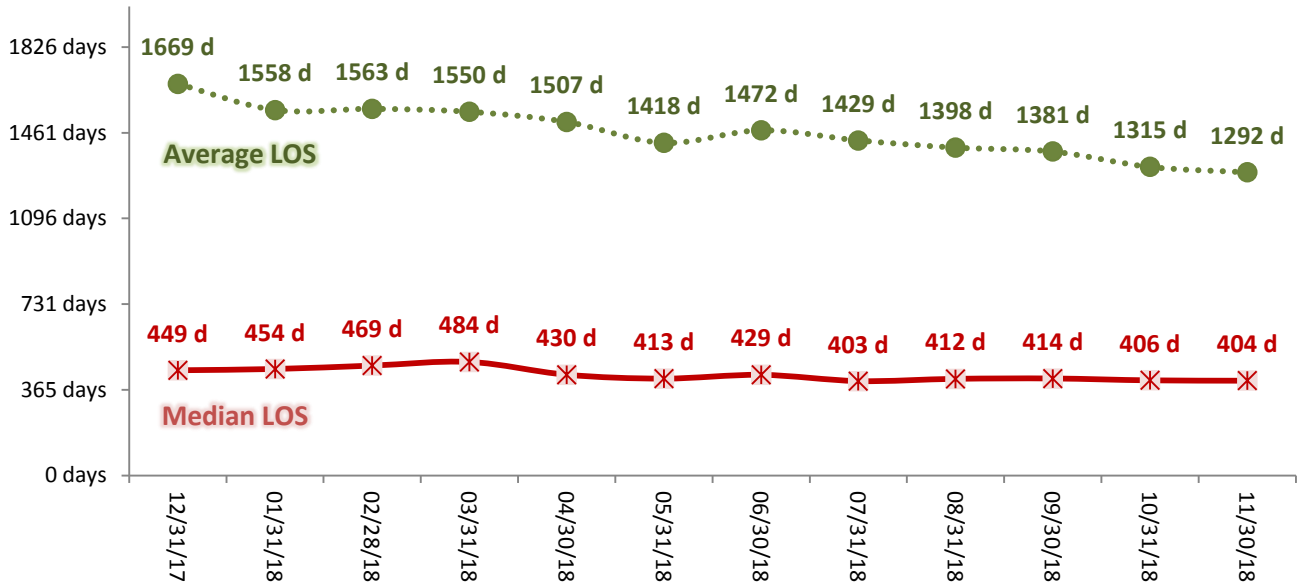
25. Length of Stay



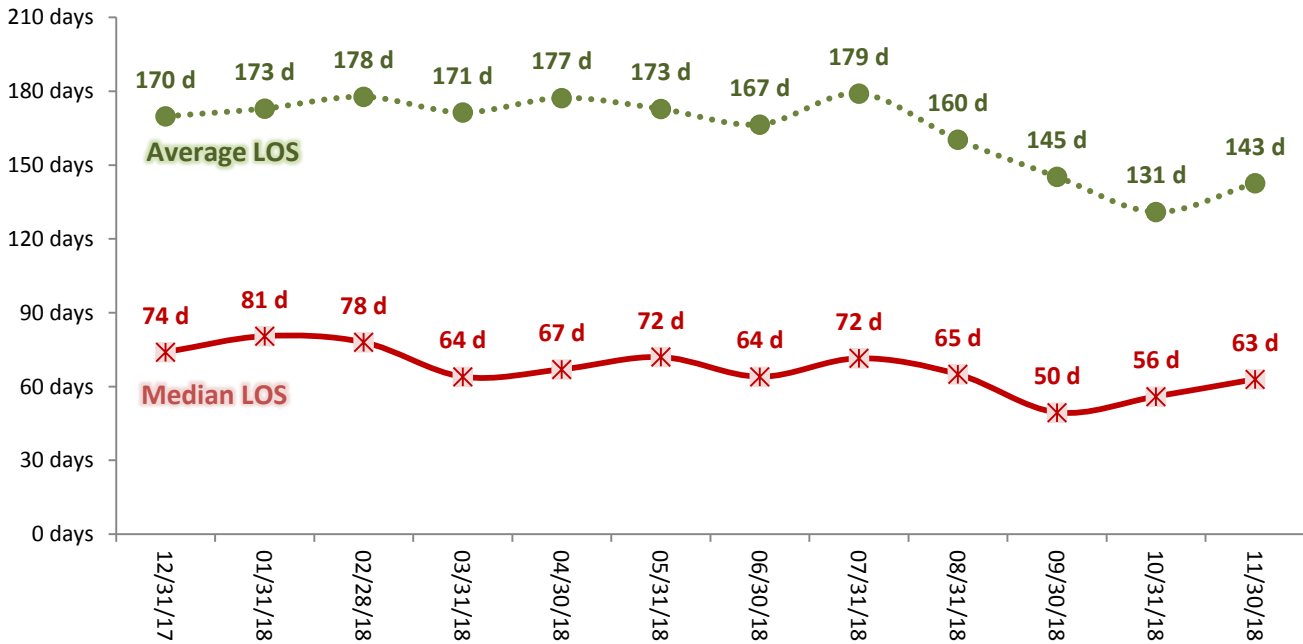
Average and Median Length of Stay for Individuals in Care



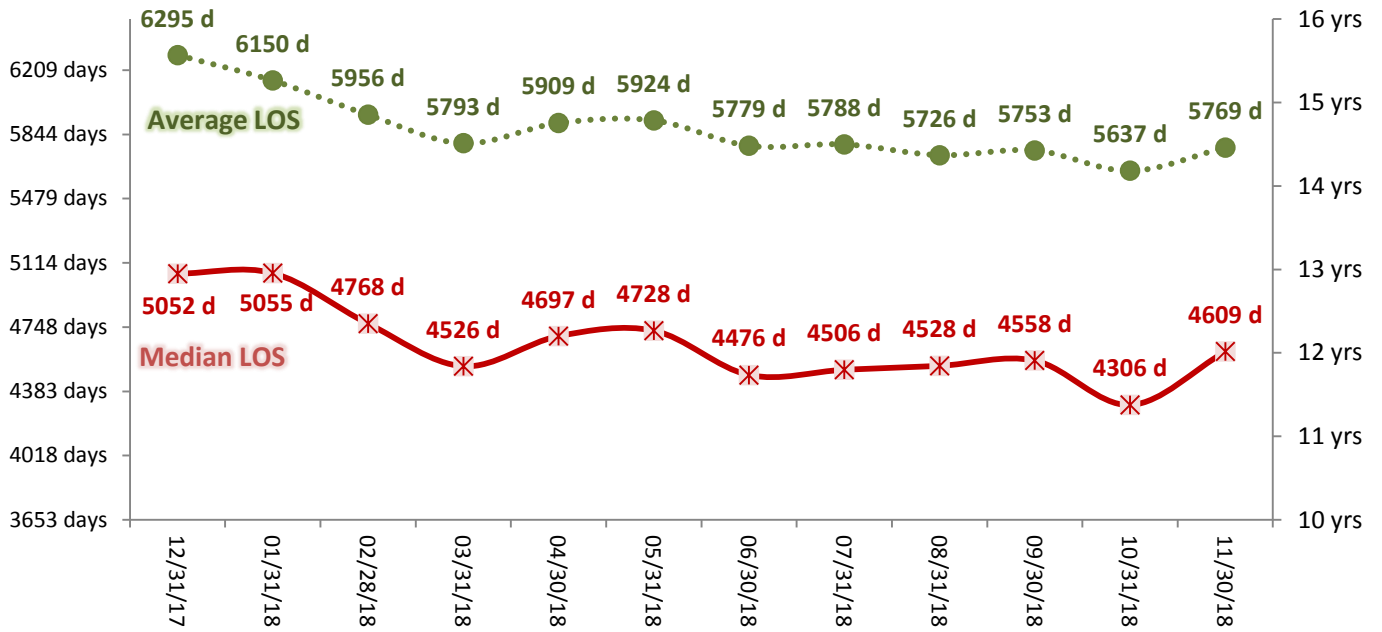
Length of Stay for Individuals in Care with Civil Legal Status



Length of Stay for Individuals in Care with Pre-trial Legal Status



Length of Stay for Individuals in Care with Post-trial Legal Status



Performance Related Information for Staff & Managers

1. Census, Admissions, Discharges & Transfers

Data Source: Avatar

Updated as of 01/15/19

Category	Dec-17	Jan-18	Feb-18	Mar-18	Apr-18	May-18	Jun-18	Jul-18	Aug-18	Sep-18	Oct-18	Nov-18	Monthly Average	Total (12mths)	Figure	
Admissions	Civil	4	12	8	9	7	12	12	7	11	9	11	9	111	Figure 1	
	Pre-trial	32	18	20	27	29	18	27	16	26	28	30	24	292		
	Post-trial	1	2	2	1	0	1	3	1	1	2	2	0	16		
	Total	37	32	30	37	36	31	42	24	38	39	43	30	419		
Discharges	Civil	7	6	10	11	11	23	16	5	7	8	6	8	118	Figure 2	
	Pre-trial	34	28	16	22	27	26	25	19	29	13	24	30	293		
	Post-trial	2	1	1	1	1	1	1	1	2	2	1	3	17		
	Total	43	35	27	34	39	50	42	25	38	23	31	41	428		
Net Increase During Month	Civil	-3	6	-2	-2	-4	-11	-4	2	4	1	5	1	-7		
	Pre-trial	-2	-10	4	5	2	-8	2	-3	-3	15	6	-9	-1		
	Post-trial	-1	1	1	0	-1	0	2	0	-1	0	1	-3	-1		
	Total	-6	-3	3	3	-3	-19	0	-1	0	16	12	-11	-9		
All Individuals on Roll at End of Month	273	270	273	275	272	252	252	250	249	265	278	266	265			
a. Present on Unit	270	270	272	273	269	249	251	247	248	262	276	262	262			
b. On AL	2	0	1	1	1	2	0	2	0	2	1	3	1			
c. On UL	1	0	0	1	2	1	1	1	1	1	1	1	1			
All Individuals on Roll: Daily Average during Month*	273	268	270	272	272	260	248	256	245	256	269	274	263		Figure 3	
a. Present on Unit	270	265	269	270	270	257	246	253	243	254	267	270	261			
b. On AL	2	2	1	1	1	1	1	1	1	1	1	3	3.8			
c. On UL	1	1	0	1	1	1	1	1	1	1	1	1	0.94			
Patient Days**	8381	8226	7526	8379	8109	7978	7387	7576	7524	7609	8276	8095	7922	95066		
Inter-Unit Transfers during Month	17	17	20	18	23	18	9	19	10	11	21	12	16	195	Figure 4	
Medical Leaves Initiated during Month	Emergency	7	8	9	9	8	10	7	11	13	4	10	13	9		109
	Non-Emer	21	16	13	33	32	21	25	15	17	16	23	19	21		251
	Total	28	24	22	42	40	31	32	26	30	20	33	32	30		360
Non-Medical Leaves Initiated during Month	167	154	112	88	101	87	106	91	70	73	84	87	102	1220		
UL Initiated during Month	0	0	0	1	1	0	2	2	0	2	0	0	1	8		
Total Unique Patients Served during Month	315	305	299	307	311	297	294	276	285	287	307	307	299	636		
30 Day Readmission***	Civil	0	1	0	0	3	1	0	0	0	1	0	0	1	6	
	Pre-trial	0	0	0	0	0	0	0	0	1	0	1	0	0	2	
	Post-trial	0	0	0	0	0	0	0	0	0	0	0	0	0	0	
	Total	0	1	0	0	3	1	0	0	1	1	1	0	1	8	

* This is the average number of individuals served on a given day for the respective month. Due to rounding from average calculation, numbers from its subcategories a, b, & c may not add up to the total number on this row.

** It counts the number of patients who are present on the unit and excludes those on authorized or unauthorized leave at 11:59pm on a given day.

*** Number of patients returning within 30 days of discharges that occurred during month.

Performance Related Information for Staff & Managers

2. Key Performance Indicators

Data Source: UI DB, MV DB, ADR DB, Restraint/Seclusion Log, and Avatar

Updated as of 01/15/19

Category	Dec-17	Jan-18	Feb-18	Mar-18	Apr-18	May-18	Jun-18	Jul-18	Aug-18	Sep-18	Oct-18	Nov-18	Monthly Average	NPR* (Jun-13)	Figure
30 Day Readmit (Discharge Cohort)**	Civil	0.0%	16.7%	0.0%	0.0%	27.3%	4.3%	0.0%	0.0%	0.0%	12.5%	0.0%	0.0%	5.1%	Figure 5
	Pre-trial	0.0%	0.0%	0.0%	0.0%	0.0%	0.0%	0.0%	0.0%	3.4%	0.0%	4.2%	0.0%	0.7%	
	Post-trial	0.0%	0.0%	0.0%	0.0%	0.0%	0.0%	0.0%	0.0%	0.0%	0.0%	0.0%	0.0%	0.0%	
	Combined	0.0%	2.9%	0.0%	0.0%	7.7%	2.0%	0.0%	0.0%	2.6%	4.3%	3.2%	0.0%	1.9%	
Number of Unusual Incidents*	163	153	175	177	149	175	177	189	178	170	231	210	179		Figure 6
Patient Unusual Incident Rate	18.1	17.0	21.8	20.1	17.3	19.4	22.3	23.1	21.9	20.5	25.4	24.8	20.9		Figure 7
UI by Severity	Catastrophe	0	0	0	0	0	0	0	0	0	0	0	0		Figure 9
	High	32	21	39	37	33	27	30	52	36	27	53	44	36	
	Medium	62	45	51	62	51	67	52	49	46	47	64	61	55	
	Low	69	87	85	78	65	81	95	88	96	96	111	103	88	
Physical Assault Incident Rate	5.6	4.1	6.6	6.4	4.4	4.5	5.4	6.7	6.9	5.7	7.0	6.1	5.8		
Selected Types of Incidents	Physical Assault	47	34	50	54	36	36	40	51	52	43	58	49	46	Figure 10
	Aggressive Behav.	57	46	64	64	65	76	82	71	62	57	93	85	69	
	Psych Emergency	54	26	49	61	51	48	53	64	46	24	77	71	52	
	Fall	25	18	16	19	12	16	11	19	14	13	28	17	17	
	Injury	21	23	25	19	24	30	23	23	21	16	25	23	23	
Physical Assaults by Severity	High	10	4	17	18	10	9	14	17	13	8	19	17	13	Figure 11
	Medium	19	14	15	20	15	15	10	17	15	18	20	14	16	
	Low	18	16	18	16	11	12	16	17	24	17	18	18	17	
Patient Injury Rate***	0.12	0.36	0.13	0.24	0.12	0.38	0.14	0.26	0.00	0.00	0.24	0.25	0.19	0.38	Figure 12
Patients with Major Injuries***	1	3	1	2	1	3	1	2	0	0	2	2	2		
Total Patients Injured***	14	11	12	9	19	20	12	21	13	11	18	16	15		
Total Staff Injured***	8	13	14	14	9	7	7	8	4	7	7	8	9		Figure 13
Patient Fall Rate	2.74	1.95	2.26	2.15	1.73	1.25	1.49	2.38	1.73	1.31	2.42	1.85	1.95		Figure 14
Total Patients who Fell	23	16	17	18	14	10	11	18	13	10	20	20	15		
Total Staff who Fell	2	1	0	1	1	6	2	3	0	3	5	0	2		
Percent of Patients Restrained	12.4%	9.2%	12.4%	14.3%	15.1%	12.5%	12.2%	14.9%	11.2%	9.4%	15.3%	10.1%	5.1%	5.8%	Figure 15
Percent of Patients Secluded	7.3%	4.6%	6.4%	6.8%	6.1%	7.1%	3.7%	7.2%	3.2%	5.6%	6.8%	5.5%	5.9%	2.4%	
Restraint Hours Rate	0.206	0.152	0.293	0.327	0.361	0.264	0.454	0.593	0.386	0.214	0.117	0.281	0.301	0.71	Figure 16
Seclusion Hours Rate	0.324	0.132	0.318	0.233	0.171	0.194	0.166	0.099	0.049	0.141	0.197	0.185	0.186	0.44	
Elopement Rate	0.12	0.12	0.00	0.12	0.12	0.00	0.14	0.13	0.00	0.13	0.00	0.00	0.08	0.13	Figure 17
Medication Variance Rate	0.60	0.49	0.53	0.12	0.25	0.88	0.14	0.26	0.27	0.79	0.97	0.99	0.53		Figure 18
Adverse Drug Reaction Rate	0.00	0.00	0.00	0.00	0.00	0.00	0.00	0.00	0.13	0.13	0.00	0.00	0.02		Figure 19
Missing Med-Admin Documentation	0.32%	0.29%	0.34%	0.23%	0.21%	0.24%	0.27%	0.24%	0.28%	0.29%	0.56%	0.55%	0.32%		Figure 20
Percent of Medication Refusal	6.48%	5.09%	5.62%	5.61%	5.40%	4.63%	4.02%	4.82%	4.62%	4.74%	5.96%	5.42%	5.23%		Figure 21
SiteFM Work Orders Completed within 3 days	70%	77%	72%	73%	69%	69%	77%	81%	88%	90%	93%	81%	78%		Figure 23
Total SiteFM Work Orders	410	576	529	553	542	528	506	627	672	541	680	549	559		
Total SiteFM Work Orders	589	751	737	760	781	767	656	770	764	602	730	676	715		

* National Public Rate, NASMHPD Research Institute, National Research Institute (NRI), Data as of June 2013, Published in November 2013.

** Percentage of patients returning within 30 days of discharges that occurred during month

*** Refer to the next page [UI & Medication]

Performance Related Information for Staff & Managers

3. Unusual Incident & Medication

Data Source: UI DB, MV DB, ADR DB, and Avatar

Updated as of 01/15/19

Category		Dec-17	Jan-18	Feb-18	Mar-18	Apr-18	May-18	Jun-18	Jul-18	Aug-18	Sep-18	Oct-18	Nov-18	Monthly Average	Total (12mths)	NPR* (Jun-13)
Unusual Incidents (excluding MV)**	Total UIs	163	153	175	177	149	175	177	189	178	170	231	210	179	2147	
	Major UIs Only	122	101	115	132	111	123	111	129	110	102	150	135	120	1441	
	Pt Involved UI Only	152	140	164	168	140	155	165	175	165	156	210	201	166	1991	
	Patient UI Rate	18.1	17.0	21.8	20.1	17.3	19.4	22.3	23.1	21.9	20.5	25.4	24.8		20.9	
	Unique Pts Involved in UI	113	105	107	108	98	99	100	115	110	113	130	118	110	1316	
Selected Types of Incidents	Physical Assault	47	34	50	54	36	36	40	51	52	43	58	49	46	550	
	Aggressive Behavior	57	46	64	64	65	76	82	71	62	57	93	85	69	822	
	Psych Emergency	54	26	49	61	51	48	53	64	46	24	77	71	52	624	
	Fall	25	18	16	19	12	16	11	19	14	13	28	17	17	208	
	Injury	21	23	25	19	24	30	23	23	21	16	25	23	23	273	
	Physical Assault Rate	5.6	4.1	6.6	6.4	4.4	4.5	5.4	6.7	6.9	5.7	7.0	6.1		5.8	
UI by Severity	Catastrophe	0	0	0	0	0	0	0	0	0	0	0	0	0	0	
	High	32	21	39	37	33	27	30	52	36	27	53	44	36	431	
	Medium	62	45	51	62	51	67	52	49	46	47	64	61	55	657	
	Low	69	87	85	78	65	81	95	88	96	96	111	103	88	1054	
Physical Assaults by Severity	High	10	4	17	18	10	9	14	17	13	8	19	17	13	156	
	Medium	19	14	15	20	15	15	10	17	15	18	20	14	16	192	
	Low	18	16	18	16	11	12	16	17	24	17	18	18	17	201	
	Total Patients who Fell	23	16	17	18	14	10	11	18	13	10	20	15	15	185	
	Patient Fall Rate	2.74	1.95	2.26	2.15	1.73	1.25	1.49	2.38	1.73	1.31	2.42	1.85		1.95	
	Total Staff who Fell	2	1	0	1	1	6	2	3	0	3	5	0	2	24	
	Total Patients Injured***	14	11	12	9	19	20	12	21	13	11	18	16	15	176	
	Patients with Major Injuries***	1	3	1	2	1	3	1	2	0	0	2	2	2	18	
	Patient Injury Rate***	0.12	0.36	0.13	0.24	0.12	0.38	0.14	0.26	0.00	0.00	0.24	0.25		0.19	0.38
	Total Staff Injured**	8	13	14	14	9	7	7	8	4	7	7	8	9		
	Total ULs Documented in Avatar	1	1	0	1	1	0	1	1	0	1	0	0	1	8	
	Elopement Rate	0.12	0.12	0.00	0.12	0.12	0.00	0.14	0.13	0.00	0.13	0.00	0.00		0.08	0.13
	Med Variance (MV) Reports**	5	4	4	1	2	7	1	2	2	6	8	8	4	50	
	MV Rate	0.60	0.49	0.53	0.12	0.25	0.88	0.14	0.26	0.27	0.79	0.97	0.99		0.53	
	Adverse Drug Reactions Reports	0	0	0	0	0	0	0	0	1	1	0	0	0	2	
	ADR Rate	0.00	0.00	0.00	0.00	0.00	0.00	0.00	0.00	0.13	0.13	0.00	0.00		0.02	
	Total Med Administrations Scheduled	107084	103991	93275	102811	98854	95516	88224	91885	90634	90932	98728	97141		1159075	
	Total Missing Documentations	344	297	320	233	208	231	235	224	253	261	554	537		3697	
	Percent of Missing Documentation	0.32%	0.29%	0.34%	0.23%	0.21%	0.24%	0.27%	0.24%	0.28%	0.29%	0.56%	0.55%		0.32%	
	Total Medication Doses Refused	6935	5298	5242	5771	5342	4418	3550	4428	4188	4311	5886	5264		60633	
	Percent of Medication Refusal	6.48%	5.09%	5.62%	5.61%	5.40%	4.63%	4.02%	4.82%	4.62%	4.74%	5.96%	5.42%		5.23%	
	Total STAT Orders	112	101	113	181	126	86	130	151	163	90	227	158	137		Figure 22
	Total STAT Events****	50	53	65	87	59	44	59	74	74	38	95	65	64		
	Total Patients with 1+ STAT Events	29	31	32	43	30	26	25	37	38	26	51	28	33		
	Total Patients with 3+ STAT Events	4	5	8	5	7	6	8	9	11	2	9	9	7		

* National Public Rate, NASMHPD Research Institute, National Research Institute (NRI), Data as of June 2013, Published in November 2013.

** Numbers may change if any additional UI report is made after the data run date from UI database (around the 15th of the following month); According to the revised UI policy as of November 4, 2013, a medication variance (MV) incident became no longer considered to be an unusual incident, and a medication or vital sign refusal incident is not longer an UI as of May 2014. UI data for the past 12 months in this report has been updated to reflect this change and reanalyzed in order to show the UI trend in consistent logic.

*** Injury is broadly defined to include any type of injuries regardless of the cause or severity level. The total number of patients injured represents all of the reported injuries including minor injuries treated with first aid alone. However, the patient injury rate considers only the number of patient injuries that required beyond first-aid level treatment based on the NRI definition and the patient injury rate is the number of 'major' patient injuries per every 1000 inpatient days

**** One STAT event may involve more than one STAT order for the same patient. Any orders placed within 20 minute timeframe are considered to belong to one STAT event. All STAT order counts are from Pharmacy only..no LABS orders,etc...

Performance Related Information for Staff & Managers

4. Restraint & Seclusion

Data Source: Restraint/Seclusion Log and UI DB (for # of total events and patients) and Avatar (for patient days/hours)

Updated as of 01/15/19

Category		Dec-17	Jan-18	Feb-18	Mar-18	Apr-18	May-18	Jun-18	Jul-18	Aug-18	Sep-18	Oct-18	Nov-18	Monthly Average	Total (12mths)	NPR* (Jun-13)
Number of Restraint Events	Mechanical	23	16	23	31	33	21	40	44	33	20	43	25	29.3		
	Physical Hold	34	24	41	52	37	35	36	45	29	20	39	31	35.3		
	Total	57	40	64	83	70	56	76	89	62	40	82	56	64.6		
Number of Unique Patients Restrained	Mechanical	15	9	13	17	20	13	17	18	15	13	21	13	15.3		
	Physical Hold	24	19	24	27	27	24	19	23	17	14	26	18	21.8		
	Total	39	28	37	44	47	37	36	41	32	27	47	31	37.2		
Percentage of Patients Restrained**	Mechanical	4.8%	3.0%	4.3%	5.5%	6.4%	4.4%	5.8%	6.5%	5.3%	4.5%	6.8%	4.2%	5.1%		
	Physical Hold	7.6%	6.2%	8.0%	8.8%	8.7%	8.1%	6.5%	8.3%	6.0%	4.9%	8.5%	5.9%	7.3%		
	Total	12.4%	9.2%	12.4%	14.3%	15.1%	12.5%	12.2%	14.9%	11.2%	9.4%	15.3%	10.1%	12.4%		5.8%
Total Restraint Hours (h:mm)**	Mechanical	40:12	28:39	49:51	63:19	68:47	48:34	78:56	105:53	68:11	38:21	21:31	51:16	55:17	663:30	
	Physical Hold	1:17	1:18	3:07	2:26	1:29	2:02	1:31	1:56	1:34	0:45	1:42	3:14	1:51	22:21	
	Total	41:29	29:57	52:58	65:45	70:16	50:36	80:27	107:49	69:45	39:06	23:13	54:30	57:09	685:51	
Restraint Hours Rate**	Mechanical	0.200	0.145	0.276	0.315	0.353	0.254	0.445	0.582	0.378	0.210	0.108	0.264	0.291	6:58	
	Physical Hold	0.006	0.007	0.017	0.012	0.008	0.011	0.009	0.011	0.009	0.004	0.009	0.017	0.010	0:14	
	Total	0.206	0.152	0.293	0.327	0.361	0.264	0.454	0.593	0.386	0.214	0.117	0.281	0.301	7:12	0.71
Number of Seclusion Events		39	16	38	36	23	24	16	21	9	20	30	28	25.0	300	
Number of Unique Patients Secluded		23	14	19	21	19	21	11	20	9	16	21	17	17.6		
Percentage of Patients Secluded		7.3%	4.6%	6.4%	6.8%	6.1%	7.1%	3.7%	7.2%	3.2%	5.6%	6.8%	5.5%	5.9%		2.4%
Total Seclusion Hours (h:mm)		65:13	26:06	57:21	46:53	33:22	37:11	29:28	18:04	8:55	25:41	39:03	35:58	35:16	423:15	
Seclusion Hours Rate		0.324	0.132	0.318	0.233	0.171	0.194	0.166	0.099	0.049	0.141	0.197	0.185		0.186	0.44

* National Public Rate, NASMHPD Research Institute, National Research Institute (NRI), Data as of June 2013, Published in November 2013.

** Restraint data prior to April 2015 includes only mechanical restraints. The Hospital's restraint policy has been revised to consider a physical hold a restraint and data as of April 2015 reflects this change. The duration of each physical hold event is counted as one (1) minute as a physical hold is ordered/used only as a temporary intervention that lasts less than a minute to break up any physical altercations or to administer emergency medications.

Performance Related Information for Staff & Managers

5. Major Unusual Incidents by Incident Location/Unit

Data Source: UI DB

Updated as of 01/15/19

Category	Dec-17	Jan-18	Feb-18	Mar-18	Apr-18	May-18	Jun-18	Jul-18	Aug-18	Sep-18	Oct-18	Nov-18	Monthly Average	Total (12mths)	Percent	
Total Unusual Incidents	163	153	175	177	149	175	177	189	178	170	231	210	179	2147	100%	
Incident Location	1A	11	10	7	15	4	5	7	10	11	7	13	15	10	115	5%
	1B	11	18	7	16	12	10	11	16	11	15	10	9	12	146	7%
	1C	17	15	46	28	25	33	30	41	27	25	47	42	31	376	18%
	1D	25	15	22	24	22	13	33	24	20	20	22	15	21	255	12%
	1E	8	6	12	10	18	20	7	15	11	6	12	20	12	145	7%
	1F	23	21	16	18	12	21	17	27	20	31	32	37	23	275	13%
	1G	21	15	15	12	6	7	7	2	2	8	10	1	9	106	5%
	2A	2	4	4	1	4	6	6	3	12	3	4	7	5	56	3%
	2B	3	3	5	1	2	2	3	5	11	6	8	8	5	57	3%
	2C	11	11	12	10	10	12	13	6	5	5	13	12	10	120	6%
	2D	12	13	13	22	19	13	24	19	25	18	38	27	20	243	11%
	TLC	7	7	11	7	4	8	7	4	13	6	9	3	7	86	4%
	Other	12	15	5	13	11	25	12	17	10	20	13	14	14	167	8%
	Physical Assault	47	34	50	54	36	36	40	51	52	43	58	49	46	550	100%
Incident Location	1A	1	1	1	4	1	0	0	2	1	3	3	1	2	18	3%
	1B	2	1	3	3	3	2	2	1	3	7	1	4	3	32	6%
	1C	4	2	7	5	3	10	9	13	8	6	16	10	8	93	17%
	1D	6	3	8	12	6	0	5	7	9	6	7	2	6	71	13%
	1E	3	2	4	3	5	4	3	9	5	2	2	7	4	49	9%
	1F	11	13	8	3	7	5	5	10	4	6	8	11	8	91	17%
	1G	8	2	7	4	0	2	2	1	1	2	4	0	3	33	6%
	2A	1	1	1	0	0	1	0	0	1	2	0	1	1	8	1%
	2B	1	0	0	0	0	0	1	0	2	1	1	0	1	6	1%
	2C	1	3	3	4	2	3	3	0	2	1	2	2	2	26	5%
	2D	5	4	6	10	7	3	8	6	13	4	12	10	7	88	16%
	TLC - Intensive	1	1	0	0	0	0	0	0	1	0	0	0	0	3	1%
	TLC - Transitional	2	1	2	6	1	2	0	1	2	0	1	0	2	18	3%
	Other	1	0	0	0	1	4	2	1	0	3	1	1	1	14	3%

Performance Related Information for Staff & Managers

5. Major Unusual Incidents by Incident Location/Unit

Data Source: UI DB

Updated as of 01/15/19

Category	Dec-17	Jan-18	Feb-18	Mar-18	Apr-18	May-18	Jun-18	Jul-18	Aug-18	Sep-18	Oct-18	Nov-18	Monthly Average	Total (12mths)	Percent
Aggressive Behavior	57	46	64	64	65	76	82	71	62	57	93	85	69	822	100%
Incident Location 1A	1	1	1	1	0	1	2	0	3	0	3	3	1	16	3%
1B	0	0	0	3	3	3	3	6	2	2	3	1	2	26	5%
1C	8	7	22	17	11	18	17	18	16	13	20	22	16	189	34%
1D	17	11	10	9	13	12	20	15	6	9	12	9	12	143	26%
1E	2	2	3	2	10	12	2	3	4	2	6	4	4	52	9%
1F	7	5	4	11	4	10	6	12	11	16	12	21	10	119	22%
1G	8	7	5	4	2	3	3	1	0	1	0	1	3	35	6%
2A	0	0	2	0	2	1	4	2	1	1	2	2	1	17	3%
2B	0	0	3	0	2	1	0	3	3	0	5	1	2	18	3%
2C	5	3	5	5	8	5	7	3	3	3	4	6	5	57	10%
2D	5	8	5	9	6	4	13	6	7	7	18	8	8	96	17%
TLC - Intensive	1	0	2	1	0	0	3	0	4	0	4	0	1	15	3%
TLC - Transitional	0	0	0	0	1	1	1	0	0	0	0	2	0	5	1%
Other	3	2	2	2	3	5	1	2	2	3	4	5	3	34	6%
Psych Emergency	54	26	49	61	51	48	53	64	46	24	77	71	52	624	100%
Incident Location 1A	0	1	1	1	0	0	0	0	1	0	1	0	0	5	1%
1B	0	0	0	0	1	0	0	3	0	0	1	1	1	6	1%
1C	9	3	11	9	10	15	13	18	12	6	18	18	12	142	26%
1D	17	6	10	15	11	2	14	14	11	3	14	8	10	125	23%
1E	0	1	3	3	5	4	1	3	0	1	5	2	2	28	5%
1F	12	7	6	8	9	13	11	17	8	5	15	25	11	136	25%
1G	7	3	7	5	2	2	1	1	1	4	1	1	3	35	6%
2A	0	0	0	0	0	0	0	1	0	0	2	0	0	3	1%
2B	0	0	0	0	0	0	0	0	1	0	3	0	0	4	1%
2C	5	2	3	6	1	4	7	2	1	0	2	2	3	35	6%
2D	0	2	7	12	9	6	5	4	10	3	15	12	7	85	15%
TLC - Intensive	1	0	1	1	1	0	0	0	0	0	0	0	0	4	1%
TLC - Transitional	1	0	0	0	0	0	0	0	0	0	0	0	0	1	0%
Other	2	1	0	1	2	2	1	1	1	2	0	2	1	15	3%

Performance Related Information for Staff & Managers

5. Major Unusual Incidents by Incident Location/Unit

Data Source: UI DB

Updated as of 01/15/19

Category		Dec-17	Jan-18	Feb-18	Mar-18	Apr-18	May-18	Jun-18	Jul-18	Aug-18	Sep-18	Oct-18	Nov-18	Monthly Average	Total (12mths)	Percent
Fall		25	18	16	19	12	16	11	19	14	13	28	17	17	208	100%
Incident Location	1A	4	1	1	6	2	3	2	4	0	1	4	1	2	29	14%
	1B	7	7	3	5	3	4	3	2	4	2	2	4	4	46	22%
	1C	1	0	3	1	1	0	0	2	1	1	2	1	1	13	6%
	1D	2	0	2	1	0	0	0	0	2	0	3	2	1	12	6%
	1E	2	1	1	1	2	0	0	1	0	0	3	5	1	16	8%
	1F	3	0	1	0	1	1	2	1	0	5	2	0	1	16	8%
	1G	3	1	3	1	0	1	0	0	0	0	1	0	1	10	5%
	2A	0	1	1	0	1	1	1	1	1	3	0	1	1	11	5%
	2B	0	2	1	0	0	0	1	1	1	2	2	2	1	11	5%
	2C	0	3	0	0	0	0	0	1	1	0	0	4	0	9	4%
	2D	2	0	0	2	2	1	0	3	0	0	1	1	1	12	6%
	TLC - Intensive	1	0	0	0	0	0	0	0	1	0	1	0	0	3	1%
	TLC - Transitional	0	0	0	0	0	2	0	0	0	1	0	0	0	3	1%
	Other	0	2	0	2	0	3	1	2	2	2	1	3	1	17	8%
Physical Injury		21	23	25	19	24	30	23	23	21	16	25	23	23	273	100%
Incident Location	1A	3	3	2	2	1	2	1	2	0	2	2	1	2	21	8%
	1B	3	2	2	1	0	0	3	1	5	3	0	2	2	22	8%
	1C	0	3	3	1	2	7	6	9	3	1	9	5	4	49	18%
	1D	2	2	4	6	3	0	1	3	4	5	4	1	3	35	13%
	1E	0	1	0	1	5	6	1	2	3	0	0	2	2	21	8%
	1F	5	4	4	0	3	3	1	2	0	0	3	2	2	27	10%
	1G	4	1	3	1	1	0	2	0	0	0	0	0	1	12	4%
	2A	0	1	0	0	1	1	0	0	1	1	0	0	0	5	2%
	2B	0	0	1	0	0	0	0	1	0	1	1	2	1	6	2%
	2C	0	1	1	3	0	1	2	0	0	0	2	1	1	11	4%
	2D	1	1	3	4	6	3	3	3	4	2	3	5	3	38	14%
	TLC - Intensive	1	0	0	0	0	0	0	0	0	1	0	0	0	2	1%
	TLC - Transitional	1	1	1	0	0	1	0	0	0	0	0	0	0	4	1%
	Other	1	3	1	0	2	6	3	0	1	0	1	2	2	20	7%

* Not every incident is a major incident. This counts only those incidents that were classified to be major based on the policy.

Performance Related Information for Staff & Managers

6A. Demographic Information of Individuals in Care

Data Source: Avatar

Updated as of 01/15/19

Category	Sub-group	Dec-17	Jan-18	Feb-18	Mar-18	Apr-18	May-18	Jun-18	Jul-18	Aug-18	Sep-18	Oct-18	Nov-18	Monthly Average	Percent*
Total Active (on Roll) at End of Month*		273	270	273	275	272	252	252	250	249	265	278	266	265	
Gender	Female	79	76	76	81	78	73	75	76	70	79	86	86	78	29.4%
	Male	194	194	197	194	194	179	177	174	179	186	192	180	187	70.6%
Age	Median Age (Years)	54 yrs	54 yrs	54 yrs	54 yrs	53 yrs	54 yrs	55 yrs	55 yrs	56 yrs	55 yrs	55 yrs	56 yrs	55 yrs	Figure 24
	<30 years old	40	42	43	47	51	45	40	40	39	38	37	30	41	15.5%
	>=30 and <40 years old	42	37	33	33	39	34	35	35	35	45	50	39	38	14.4%
	>=40 and <50 years old	29	29	30	33	28	26	23	21	23	26	24	25	26	10.0%
	>=50 and <60 years old	54	57	59	55	54	47	48	49	47	50	56	60	53	20.0%
	>=60 years old	108	105	108	107	100	100	106	105	105	106	111	112	106	40.1%
Legal Status of Individuals on Roll at End of Month	Emergency	17	22	20	18	19	16	15	15	19	19	19	17	18	6.8%
	Inpatient Commitment	39	43	44	46	47	51	51	53	54	57	63	66	51	19.3%
	Outpatient Commitment	19	18	19	20	22	20	17	18	17	16	18	19	19	7.0%
	Voluntary	23	24	25	23	20	16	16	16	16	18	18	20	20	7.4%
	Non-Protesting	0	0	0	0	0	0	0	0	0	0	0	0	0	0.0%
	Civil Sub-total	98	107	108	107	108	103	99	102	106	110	118	122	107	40.6%
	DC Exam	80	69	69	69	71	55	57	55	48	64	66	51	63	23.7%
	Mentally Incompetent	28	25	26	28	23	25	25	23	26	22	22	24	25	9.4%
	Forensic Pre-trial Sub-total	108	94	95	97	94	80	82	78	74	86	88	75	88	33.1%
	NGBRI - DC	56	57	57	57	57	57	59	59	58	58	58	55	57	21.7%
	NGBRI - US	4	4	5	5	5	5	5	5	5	5	6	6	5	1.9%
NGBRI - VI	1	1	1	1	1	1	1	1	1	1	1	1	1	0.4%	
Dual Commitment	1	1	1	1	1	1	1	1	1	1	1	1	1	0.4%	
Post Trial Mental Exam PTME	0	1	1	1	0	0	0	0	0	0	1	1	0	0.2%	
Sexual Psychopath (Miller Act)	3	3	3	3	3	3	3	3	3	3	3	3	3	1.1%	
Forensic Post-trial Sub-total	65	67	68	68	67	67	69	69	68	68	70	67	68	25.6%	
Length of Stay	<30 Days	35	32	34	36	35	27	41	24	38	37	39	28	34	12.8%
	>=30 ~ <365 Days	109	108	109	112	109	104	92	107	90	101	110	107	105	39.6%
	>= 1 Year & < 2 Years	26	27	26	25	28	28	27	28	30	35	32	33	29	10.9%
	>= 2 Years & < 5 Years	34	33	33	31	29	27	26	25	25	24	28	30	29	10.9%
	>= 5 Years & < 20 Years	37	38	40	41	41	36	36	36	36	38	38	38	38	14.3%
	>= 20 Years	32	32	31	30	30	30	30	30	30	30	31	30	31	11.5%
	Median LOS (Days)	298 d	325 d	316 d	278 d	298 d	329 d	322 d	338 d	345 d	325 d	311 d	349 d	319 d	Figure 25
	Median LOS - Civil	449 d	454 d	469 d	484 d	430 d	413 d	429 d	403 d	412 d	414 d	406 d	404 d	430 d	
	Median LOS - Pre-trial	74 d	81 d	78 d	64 d	67 d	72 d	64 d	72 d	65 d	50 d	56 d	63 d	67 d	
	Median LOS - Post-trial	5052 d	5055 d	4768 d	4526 d	4697 d	4728 d	4476 d	4506 d	4528 d	4558 d	4306 d	4609 d	4651 d	
	Average LOS (Days)	2167 d	2206 d	2165 d	2099 d	2117 d	2212 d	2216 d	2236 d	2207 d	2097 d	2020 d	2087 d	2152 d	
Average LOS - Civil	1669 d	1558 d	1563 d	1550 d	1507 d	1418 d	1472 d	1429 d	1398 d	1381 d	1315 d	1292 d	1463 d		
Average LOS - Pre-trial	170 d	173 d	178 d	171 d	177 d	173 d	167 d	179 d	160 d	145 d	131 d	143 d	164 d		
Average LOS - Post-trial	6295 d	6150 d	5956 d	5793 d	5909 d	5924 d	5779 d	5788 d	5726 d	5753 d	5637 d	5769 d	5873 d		

* Counts the total number of individuals who are on the hospital roll at end of each month. This number serves as denominator to calculate percentage of each group.

Performance Related Information for Staff & Managers

6B. Demographic Information of Individuals in Care

Data Source: Avatar

Updated as of 01/15/19

Category	Sub-group	Dec-17	Jan-18	Feb-18	Mar-18	Apr-18	May-18	Jun-18	Jul-18	Aug-18	Sep-18	Oct-18	Nov-18	Monthly Average	Percent*
Total Active (on Roll) at End of Month*		273	270	273	275	272	252	252	250	249	265	278	266	265	
Gender	Female	29%	28%	28%	29%	29%	29%	30%	30%	28%	30%	31%	32%	29%	
	Male	71%	72%	72%	71%	71%	71%	70%	70%	72%	70%	69%	68%	71%	
Age	Median Age (Years)	54 yrs	54 yrs	54 yrs	54 yrs	53 yrs	54 yrs	55 yrs	55 yrs	56 yrs	55 yrs	55 yrs	56 yrs	55 yrs	
	<30 yrs	15%	16%	16%	17%	19%	18%	16%	16%	16%	14%	13%	11%	15%	
	>=30 and <40 yrs	15%	14%	12%	12%	14%	13%	14%	14%	14%	17%	18%	15%	14%	
	>=40 and <50 yrs	11%	11%	11%	12%	10%	10%	9%	8%	9%	10%	9%	9%	10%	
	>=50 and <60 yrs	20%	21%	22%	20%	20%	19%	19%	20%	19%	19%	20%	23%	20%	
	>=60 yrs	40%	39%	40%	39%	37%	40%	42%	42%	42%	42%	40%	40%	42%	40%
Legal Status of Individuals on Roll at End of Month	Emergency	6%	8%	7%	7%	7%	6%	6%	6%	8%	7%	7%	6%	7%	
	Inpatient Commitment	14%	16%	16%	17%	17%	20%	20%	21%	22%	22%	23%	25%	19%	
	Outpatient Commitment	7%	7%	7%	7%	8%	8%	7%	7%	7%	6%	6%	7%	7%	
	Voluntary	8%	9%	9%	8%	7%	6%	6%	6%	6%	7%	6%	8%	7%	
	Non-Protesting	0%	0%	0%	0%	0%	0%	0%	0%	0%	0%	0%	0%	0%	
	Civil Sub-total	36%	40%	40%	39%	40%	41%	39%	41%	43%	42%	42%	46%	41%	
	DC Exam	29%	26%	25%	25%	26%	22%	23%	22%	19%	24%	24%	19%	24%	
	Mentally Incompetent	10%	9%	10%	10%	8%	10%	10%	9%	10%	8%	8%	9%	9%	
	Forensic Pre-trial Sub-total	40%	35%	35%	35%	35%	32%	33%	31%	30%	32%	32%	28%	33%	
	NGBRI - DC	21%	21%	21%	21%	21%	23%	23%	24%	23%	22%	21%	21%	22%	
	NGBRI - US	1%	1%	2%	2%	2%	2%	2%	2%	2%	2%	2%	2%	2%	
	NGBRI - VI	0%	0%	0%	0%	0%	0%	0%	0%	0%	0%	0%	0%	0%	
	Dual Commitment	0%	0%	0%	0%	0%	0%	0%	0%	0%	0%	0%	0%	0%	
Sexual Psychopath (Miller Act)	1%	1%	1%	1%	1%	1%	1%	1%	1%	1%	1%	1%	1%		
Forensic Post-trial Sub-total	24%	25%	25%	25%	25%	27%	27%	28%	27%	26%	25%	25%	26%		
Length of Stay	Median LOS (Days)	298 d	325 d	316 d	278 d	298 d	329 d	322 d	338 d	345 d	325 d	311 d	349 d	319 d	
	Average LOS (Days)	2167 d	2206 d	2165 d	2099 d	2117 d	2212 d	2216 d	2236 d	2207 d	2097 d	2020 d	2087 d	2152 d	
	<30 days	13%	12%	12%	13%	13%	11%	16%	10%	15%	14%	14%	11%	13%	
	>=30 days & <365 days	40%	40%	40%	41%	40%	41%	37%	43%	36%	38%	40%	40%	40%	
	>= 1 year & < 2 years	10%	10%	10%	9%	10%	11%	11%	11%	12%	13%	12%	12%	11%	
	>= 2 years & < 5 years	12%	12%	12%	11%	11%	11%	10%	10%	10%	9%	10%	11%	11%	
	>= 5 years & < 20 years	14%	14%	15%	15%	15%	14%	14%	14%	14%	14%	14%	14%	14%	
>= 20 years	12%	12%	11%	11%	11%	12%	12%	12%	12%	11%	11%	11%	12%		

* Counts the total number of individuals who are on the hospital roll at end of each month. This number serves as denominator to calculate percentage of each group.