



**DISTRICT OF COLUMBIA DEPARTMENT OF MENTAL HEALTH
CONTRACTS AND PROCUREMENT ADMINISTRATION**

October 16, 2009

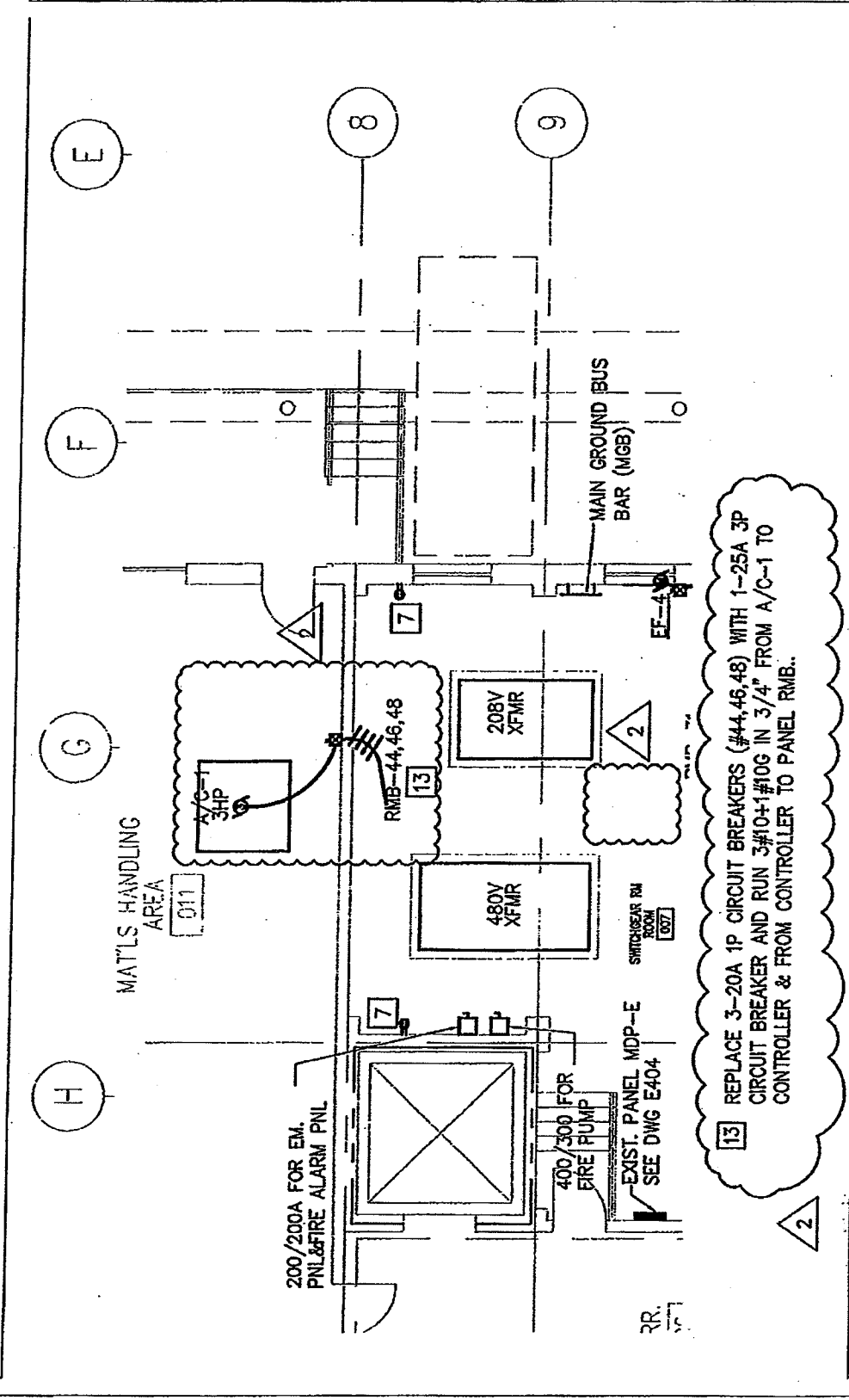
**REQUEST FOR QUOTE TO PROVIDE AND INSTALL A NEW COOLING SYSTEM AT
SAINT ELIZABETHS HOSPITAL, RMB BUILDING TRANSFORMER, ELECTRICAL AND
SWITCHGEAR ROOMS**
RM-09-RFQ-193-BY0-RKG

AMENDMENT NUMBER ONE (1)

TO ALL PROSPECTIVE OFFERORS:

1. THE CLOSING DATE (SUBMISSION DATE) OF THIS SOLICITATION IS HEREBY EXTENDED THREE (3) DAYS, FROM MONDAY, OCTOBER 19, 2009 AT 2:00 P.M. TO THURSDAY, OCTOBER 22, 2009 AT 2:00 P.M.

Question No.	RFP Section	Question
1	Section C.2	The above mentioned RFQ (RM-09-RFQ-193-BY0-RKG) mentions an attached diagram in Section C.2. Kindly make this diagram available on the website at the earliest.
<p>DMH RESPONSE: Section C.2, bullet 3, is amended to include the diagram below as follows:</p> <ul style="list-style-type: none">• Provide and install one (1) 1,200 CFM fan coil unit with associated duck work and piping in the switchgear room in the RMB building as per the diagram below:		



13 REPLACE 3-20A 1P CIRCUIT BREAKERS (#44, 46, 48) WITH 1-25A 3P CIRCUIT BREAKER AND RUN 3#10+1#10G IN 3/4" FROM A/C-1 TO CONTROLLER & FROM CONTROLLER TO PANEL RMB.

1 SWITCHGEAR ROOM COOLING 1/8"=1'-0"

PROJECT: STEELZARIBETHS RMB CT-7 & CT-8		PANEL VOLTAGE: 120/208V		AIC RATING: 35,000					
RMB (SECTION 1)		PHASE WIRE: 3PH 4W		MOUNTING: SURFACE					
LOCATION: SWITCHGEAR ROOM		BUSMAIN (AMPS): 400/400 MCB		NOTES: SEE NOTES BELOW					
CT	Loop	NO.	DESCRIPTION	LOAD (KVA)	DESCRIPTION	LOAD (KVA)	CT NO.		
		A	B	C	MISC. REC'D	RECT			
1	20	1	LTG-SWITCHGEAR ROOM	0.5	1.5	1.0	20	1	2
3	20	1	LTG-MECHANICAL ROOM	1.5	2.5	1.0	20	1	4
5	15	3	JOCKEY PUMP		2.0	1.6	20	1	6
7					2.0	1.6	20	1	8
9					1.4	1.0	20	1	10
11	20	1	DAMPERS MECH. RM		1.7	1.2	20	1	12
13	15	3	EF-1	0.5	1.5	1.2	20	1	14
15				0.4	0.8	0.4	20	1	16
17				0.4	1.4	1.0	30	1	18
19	40	3	SSPARE	0.4	1.0	0.4	20	1	20
21					1.0	1.0	20	1	22
23					1.5	1.5	20	1	24
25	15	3	EF-2	0.4	1.9	1.5	20	1	26
27					1.9	1.5	20	1	28
29					1.9	1.5	20	1	30
31	20	1	DAMPERS, RMB-EF-4		1.8	1.0	20	1	32
33	20	1	UH-1		2.0	0.6	20	1	34
35	20	1			0.6	0.6	20	1	36
37	200	3	PANEL RMB1	26.1	0.0	0.0	20	1	38
39				26.1	0.0	0.0	20	1	40
41				26.1	0.0	0.0	20	1	42
SUB-TOTAL CONNECTED LOAD (KVA)				246	0.0	0.0			
CONNECTED LOAD THIS SECTION (KVA)				100.0	0.0	0.0			
CONNECTED LOAD 2ND SECTION (KVA)				273.0	0.0	0.0			
TOTAL CONNECTED LOAD (KVA)				127.9	0.0	0.0			
DEMAND FACTOR				0.8	0.0	0.0			
TOTAL DEMAND LOAD (KVA)				102.3	0.0	0.0			

DEMAND LOAD (KVA) 109
 SPARE LOAD (KVA) 27.1
 TOTAL DEMAND (KVA) 136
 LINE CURRENT (AMPS) 183

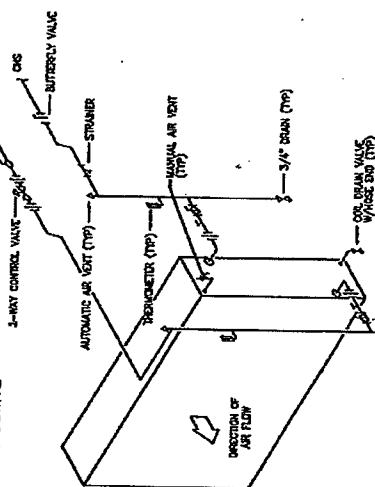
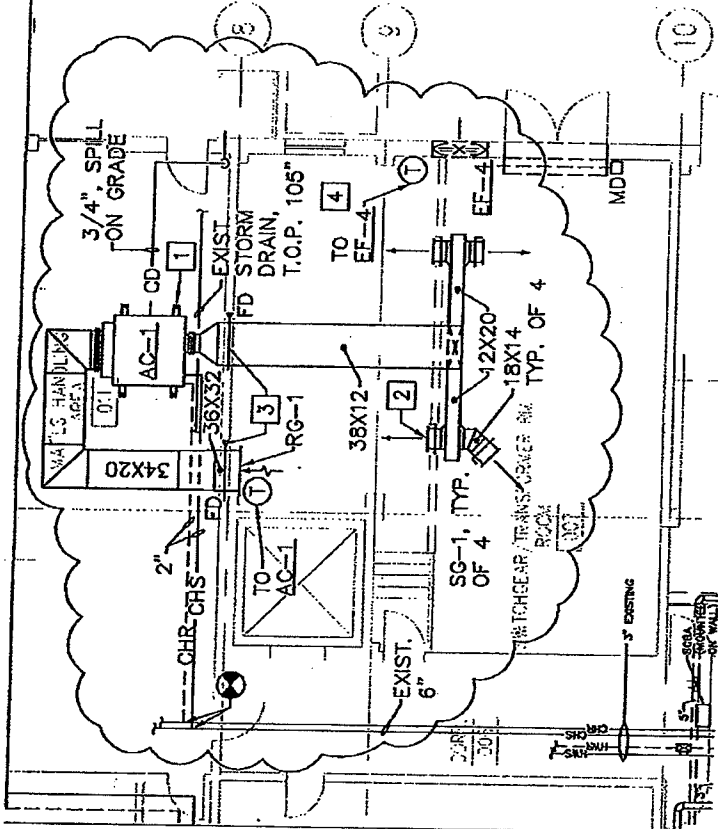
2

PROJECT: ST. ELIZABETH'S RMB, CT-7 & CT-8		PANEL VOLTAGE: 150/208V		AC RATING: 85,000			
PANEL: RMB (SECTION 2)		PHASE & WIRE: BUSWAY (AMPS)		MOUNTING: SURFACE			
LOCATION: SWITCHGEAR ROOM		BUSWAY (AMPS)		NOTES: SEE NOTES BELOW			
CIRCUIT NO.	FLOOR	DESCRIPTION	LOAD (KVA)		CIRCUIT NO.		
			WIRE	REC			
NO.	TYPE	DESCRIPTION	SPR. SEQUENCE		CIRCUIT NO.		
			A	B			
NO.	TYPE	DESCRIPTION	LOAD (KVA)		CIRCUIT NO.		
			MISC.	REC.			
43	20	1 HEAT TRACING BUSWAY #1	1.5		25	9	44
45	20	1 HEAT TRACING BUSWAY #1	1.5		/	/	46
47	20	1 HEAT TRACING BUSWAY #1	1.5		/	/	48
49	20	1 HEAT TRACING BUSWAY #1	1.5				50
51	20	1 HEAT TRACING BUSWAY #1	1.5				52
53	20	1 HEAT TRACING BUSWAY #1	1.5				54
55	20	1 HEAT TRACING BUSWAY #1	1.5				56
57	20	1 HEAT TRACING BUSWAY #1	1.5				58
59	20	1 HEAT TRACING BUSWAY #2	1.5				60
61	20	1 HEAT TRACING BUSWAY #2	1.5				62
63	20	1 HEAT TRACING BUSWAY #2	1.5				64
65	20	1 HEAT TRACING BUSWAY #2	1.5				66
67	20	1 HEAT TRACING BUSWAY #2	1.5				68
69	20	1 HEAT TRACING BUSWAY #2	1.5				70
71	20	1 HEAT TRACING BUSWAY #2	1.5				72
73	20	1 HEAT TRACING BUSWAY #2	1.5				74
75	20	1 SPARE					76
77	20	1 SPARE					78
79	20	1 SPARE					80
81	20	1 SPARE					82
83	20	1 SPARE					84
SUB-TOTAL CONNECTED LOAD (KVA)			23.0	0.0	0.0		
CONNECTED LOAD THIS SECTION (KVA)			23.0	0.0	0.0		
TOTAL CONNECTED LOAD (KVA)			272	700	0.0		
DEMAND FACTOR			0.8	0.7	0.0		
TOTAL DEMAND LOAD (KVA)			223	500	0.0		
DEMAND LOAD (KVA)							22
SPARE LOAD (KVA)							5.58
TOTAL DEMAND (KVA)							28
LINE CURRENT (AMPS)							85.8

2

KEY NOTES:

- 1 PROVIDE SUPPORT WITH SPRING-HANGER FOR CEILING MOUNTED AC UNIT. MAINTAIN MANUFACTURER RECOMMENDED SERVICE CLEARANCE.
- 2 COORDINATE EXACT LOCATION OF AIR DISTRIBUTION SYSTEM W/ ELECTRICAL EQUIPMENT FINAL LOCATIONS. MAINTAIN SERVICE CLEARANCE FOR THE TRANSFORMER & AVOID CABLE TRAY. THERMOSTATICALLY CONTROL SYSTEM SHALL BE CAPABLE TO BE INTERFACED TO BMS TO INITIATE ALARMS & INDICATE THE STATUS OF THE AC-1.
- 3 CUT EXISTING 8" CONCRETE WALL FOR SUPPLY AND RETURN AND INSTALLATION OF FIRE DAMPERS. PROVIDE DIMENSIONAL SKETCH OF PROPOSED CUT LOCATIONS FOR APPROVAL BY STRUCTURAL ENGINEER 7 BUSINESS DAY PRIOR TO MAKING CUTS.
- 4 RELOCATE GROUNDING TO ACCOMMODATE INSTALLATION OF DUCTWORK.



CHILLED WATER COIL PIPING DETAIL (NTS)

UNIT NO	DUTY	NOMINAL DUCT SIZE (IN)	CFM	AIR DEVICE SCHEDULE			MOUNTING (Y/N)	DAMPERS BASIS OF DESIGN	
				MAX PD (IN WEG)	MAX NC	JAL			
SC-1	SUPPLY	18X14	1,100	0.09	29	STEEL	EXACT MOUNTED	N	TITUS, 300
RC-1	RETURN	36X12	4,400	0.05	26	STEEL	EXACT MOUNTED	N	TITUS, 300

UNIT NO	WATER SIDE		AIR CONDITIONING UNIT SCHEDULE				ELECTRICAL DATA				BASIS OF DESIGN				
	FLUID	EWT (F)	MAX EAT (F)	MAX EAT (F)	MAX CPM	MAX DBWB	FLA	VOLT	PH	HZ		SENSELESS LOAD (MBH)	OPERATING WEIGHT (LBS)		
AC-1	WATER	4	56	23.8	29	4400	59.07	57.0/52.2	3	6.7	208	3	60	155.8	265

NOTE: PROVIDE 30% EFF. FILTER

1 TRANSFORMER ROOM COOLING

SCALE
1/8"=1'-0"

ALL OTHER TERMS AND CONDITIONS OF THE REQUEST FOR PROPOSALS REMAIN UNCHANGED.

Only one copy of this amendment is being sent to prospective Offerors. Offerors shall sign below and attach a signed copy of this amendment to each proposal to be submitted to the place specified for receipt of proposals. Proposals shall be mailed or delivered in accordance with the instructions provided in the original RFQ. In the event your Quote has been previously deposited with the Department of Mental Health, Contracts and Procurement Administration (DMH/CPA), submit this signed Amendment in a sealed envelope, identified on the outside by the RFQ number and submission date. This signed Amendment must be received by the DMH/CPA no later than the date and time for closing. Failure to acknowledge receipt of Amendment One (1) for Solicitation Number **RM-09-RFQ-193-BY4-RKG** may be cause for rejection of any quote submitted in response to the subject RFQ.

Signed:

Samuel J. Feinberg, CPPO, CPPB
Director, Contracts and Procurement
Agency Chief Contracting Officer

Amendment Number One (1) is hereby acknowledged and is considered a part of the quote for Solicitation Number **RM-09-RFQ-193-BY0-RKG**.

Signature of Authorized Representative

Date

Title of Authorized Representative

Print or Type Name of Offeror