

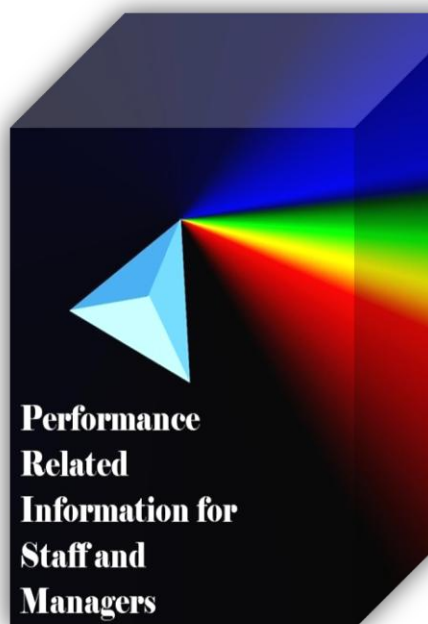
**Government of the District of Columbia
Department of Mental Health (DMH)**



Performance Related Information for Staff and Managers

**PRISM
MARCH 2012**

Table of Contents



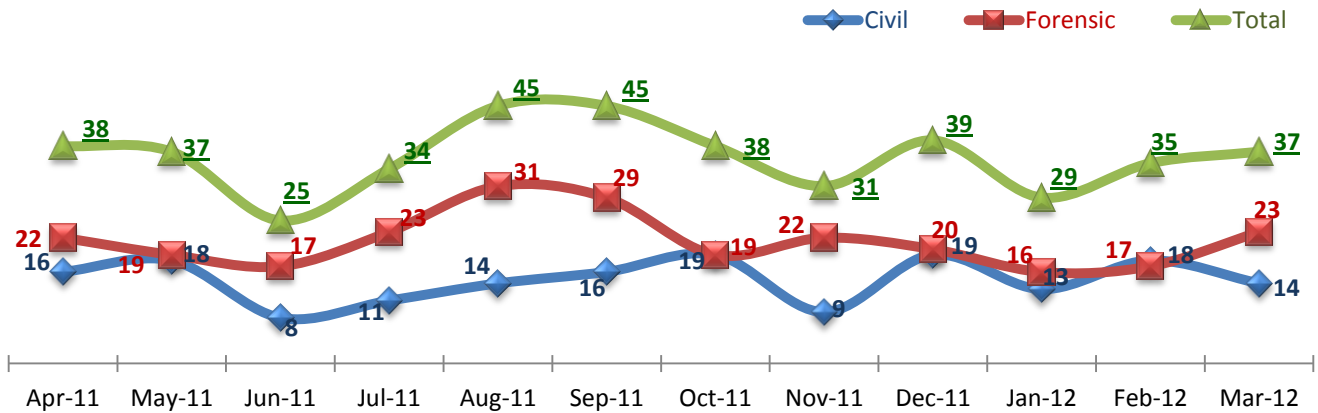
1.	Admissions to SEH	1
2.	Discharges from SEH.....	1
3.	Average Daily Census	1
4.	Transfers	2
5.	30-Day Readmission Rate	2
6.	Unusual Incidents.....	2
7.	Unusual Incidents by Severity	3
8.	Patient-Involved Unusual Incidents.....	3
9.	Selected Types of Incidents	4
10.	Physical Assaults by Severity	4
11.	Patient Injuries.....	5
12.	Staff Injuries.....	5
13.	Eloperments	5
14.	Reported Medication Variances	6
15.	Reported Adverse Drug Reactions	6
16.	Percent of Missing Documentation on Med-Administration.....	6
17.	Emergency Involuntary Medications Documented in eMar	7
18.	Percent of Patients Restrained or Secluded.....	7
19.	Restraint Hours Rate & Seclusion Hours Rate	7

<input type="checkbox"/>	<i>Appendix 1) Table – Census, Admissions & Discharges</i>
<input type="checkbox"/>	<i>Appendix 2) Table – Key Performance Indicators</i>
<input type="checkbox"/>	<i>Appendix 3) Table – Unusual Incident & Medication</i>
<input type="checkbox"/>	<i>Appendix 4) Table – Restraint & Seclusion</i>
<input type="checkbox"/>	<i>Appendix 5) Table – Major Incidents by Incident Location/Unit</i>
<input type="checkbox"/>	<i>Appendix 6) Table – Demographic Information of Individuals in Care</i>

4/16/2012

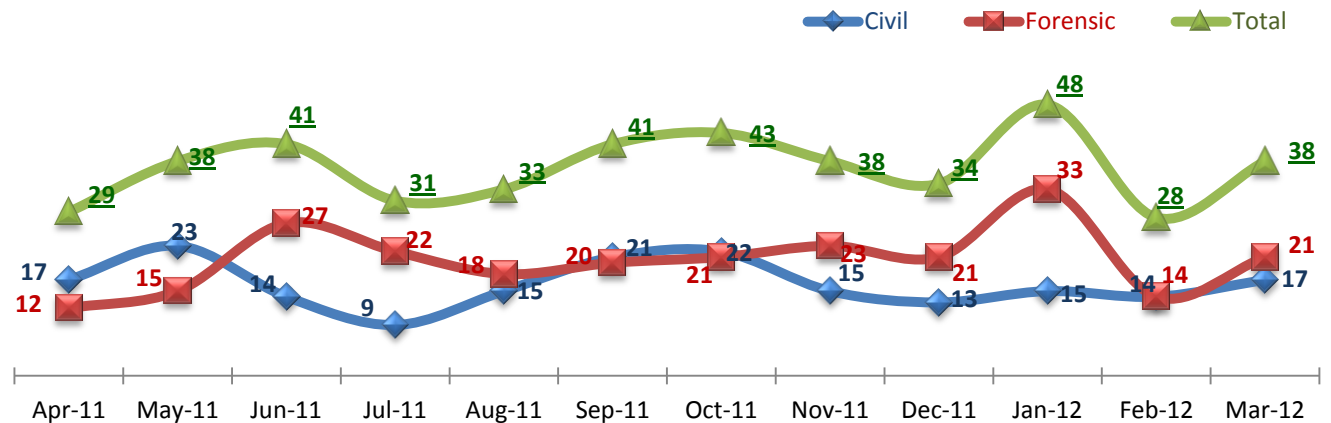
Office of Statistics and Reporting (OSR)

1. Admissions to SEH



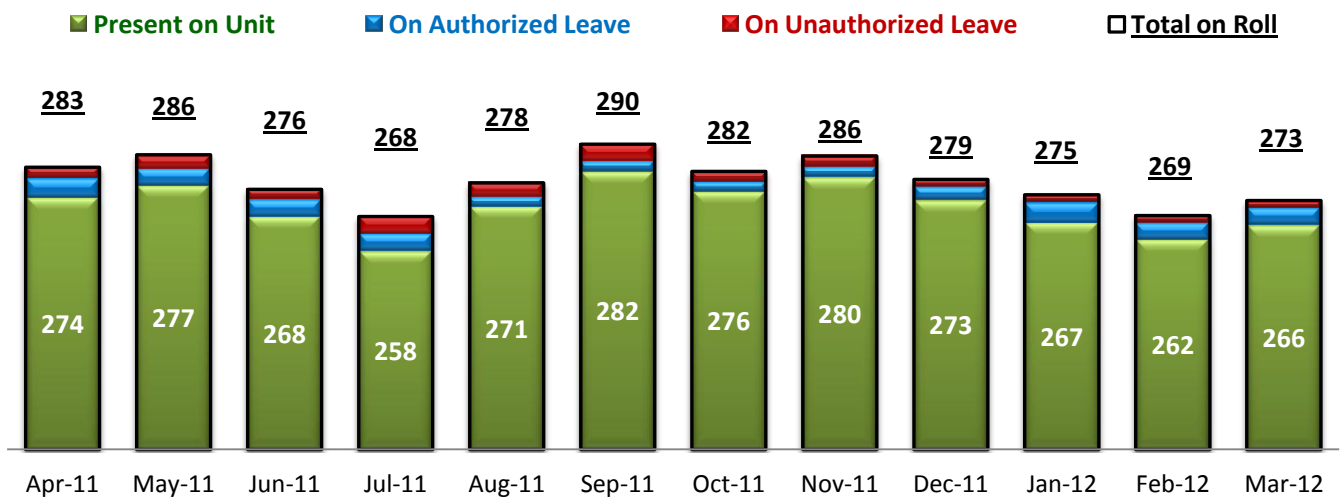
* Number of admissions to SEH inpatient program, including transfers from outpatient to inpatient program.

2. Discharges from SEH



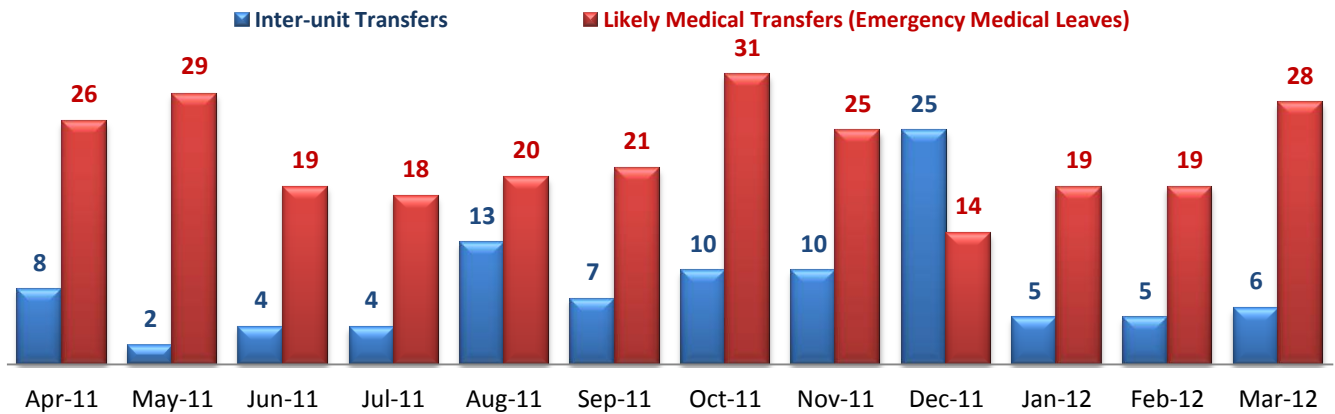
* Number of discharges from SEH inpatient program, including transfers from inpatient to outpatient program.

3. Average Daily Census



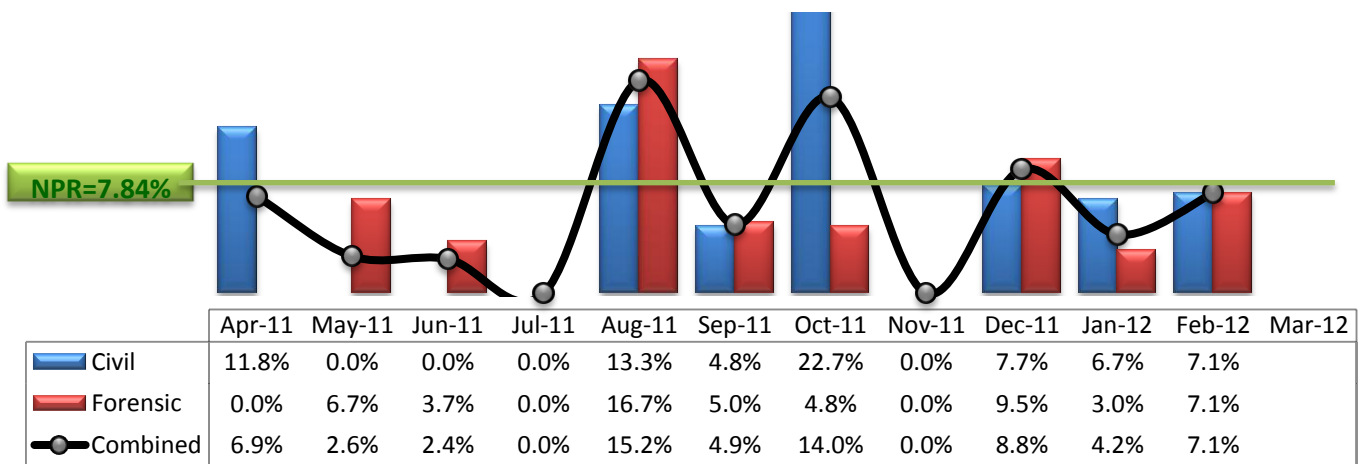
* Data above is the daily average number of individuals counted at 11:59 PM every day during each month.

4. Transfers



* Number of inter-unit transfers that occurred during month and number of emergency medical leaves that were initiated during month.

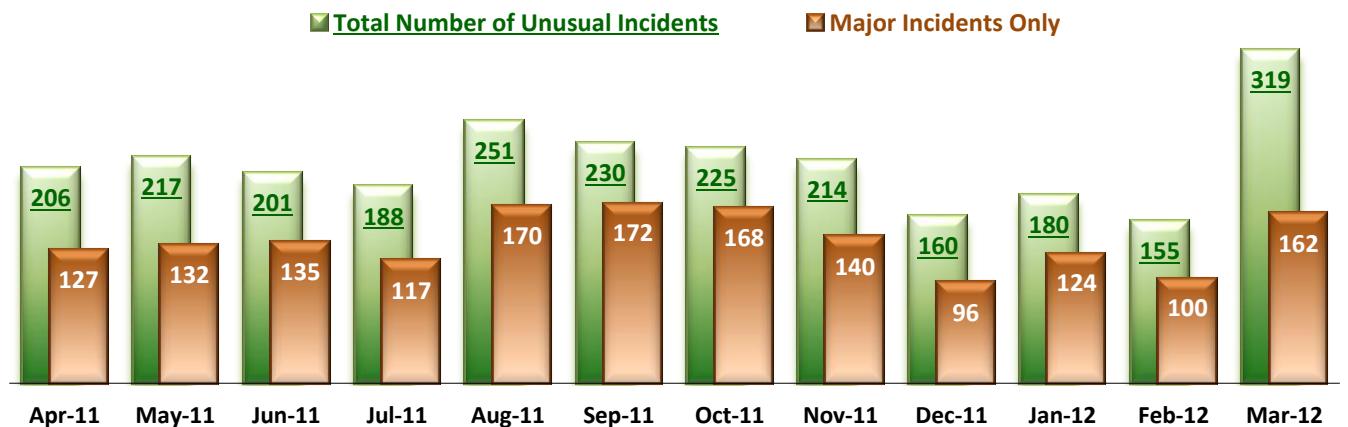
5. 30-Day Readmission Rate



* Percent of discharges that returned to SEH within 30 days of discharges. It does not include those who may have been re-hospitalized at another psychiatric facility. This measure requires 30-day observation following discharge.

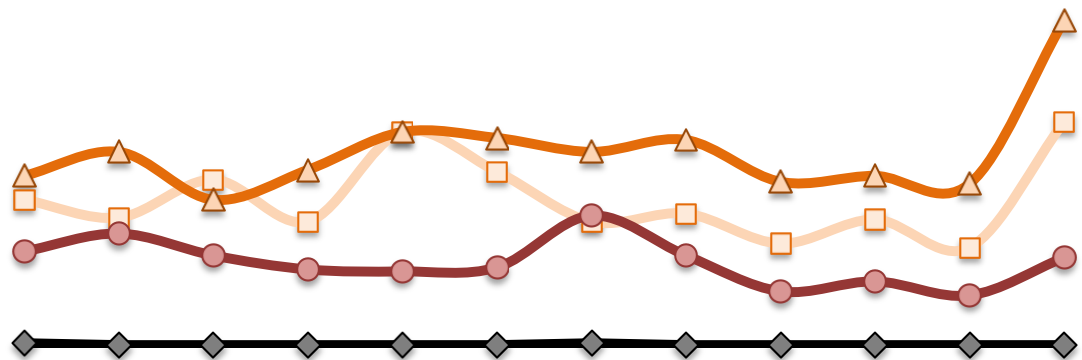
** NPR: National Public Rate as of December 2009 published by NASMHPD Research Institute in May 2010.

6. Unusual Incidents



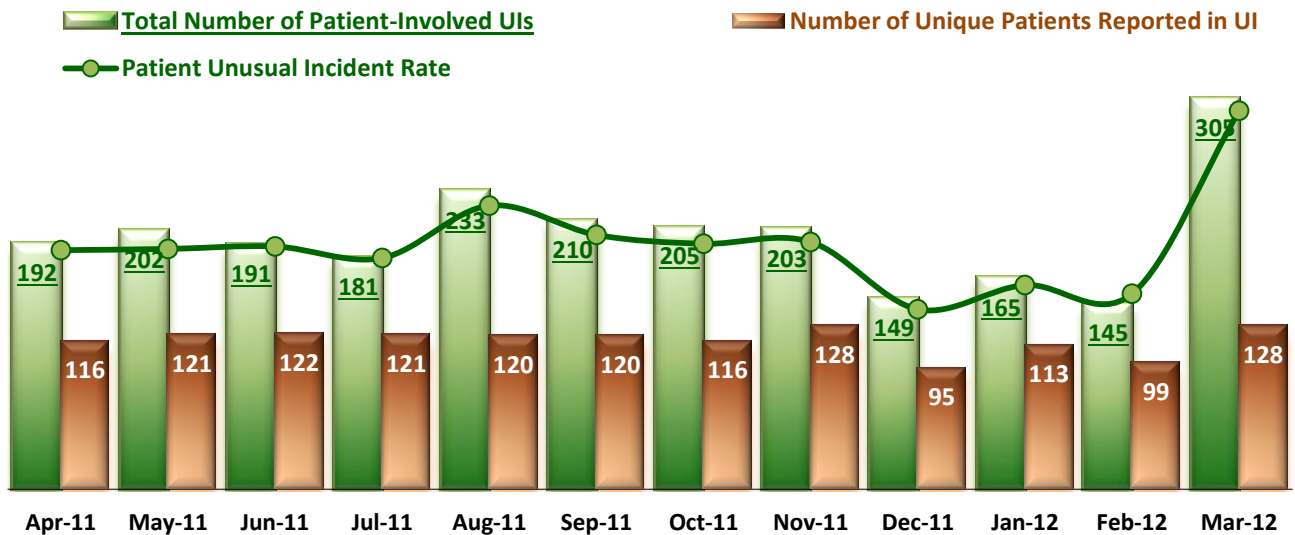
* Numbers above represent all types of the unusual incidents (UIs) that were reported to the Risk Manager by PRISM publication date, including those that did not involve any patients.

7. Unusual Incidents by Severity



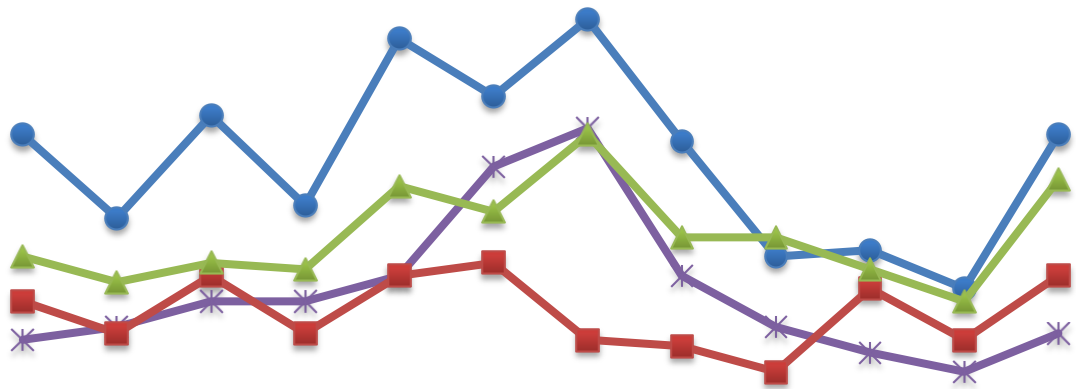
	Apr-11	May-11	Jun-11	Jul-11	Aug-11	Sep-11	Oct-11	Nov-11	Dec-11	Jan-12	Feb-12	Mar-12
1) Low	73	64	83	62	107	87	62	66	51	63	49	112
2) Medium	85	97	73	88	107	104	97	103	82	85	81	163
3) High	47	56	45	38	37	39	65	45	27	32	25	44
4) Catstrp	1	0	0	0	0	0	1	0	0	0	0	0
Total UI	206	217	201	188	251	230	225	214	160	180	155	319

8. Patient-Involved Unusual Incidents



*The total number of patient-involved UIs counts only those incidents that involved at least one or more patients. Some patients may be involved in more than one incident and the number of unique patients does not double count them. The patient UI rate is the number of patient-involved unusual incidents reported for every 1000 inpatient days.

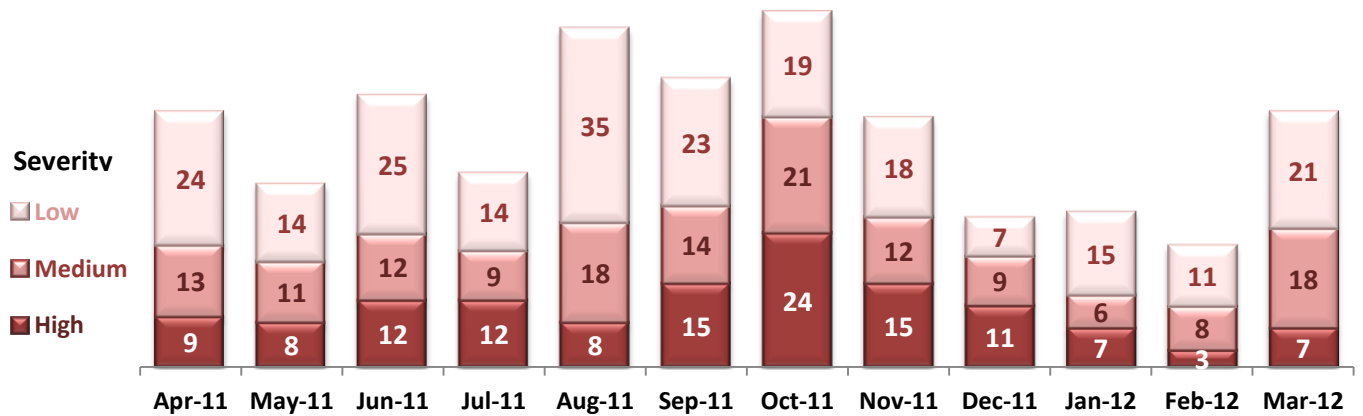
9. Selected Types of Incidents



	Apr-11	May-11	Jun-11	Jul-11	Aug-11	Sep-11	Oct-11	Nov-11	Dec-11	Jan-12	Feb-12	Mar-12
Physical Assault	46	33	49	35	61	52	64	45	27	28	22	46
Psych Emergency	14	16	20	20	24	41	47	24	16	12	9	15
Fall	20	15	24	15	24	26	14	13	9	22	14	24
Injury	27	23	26	25	38	34	46	30	30	25	20	39

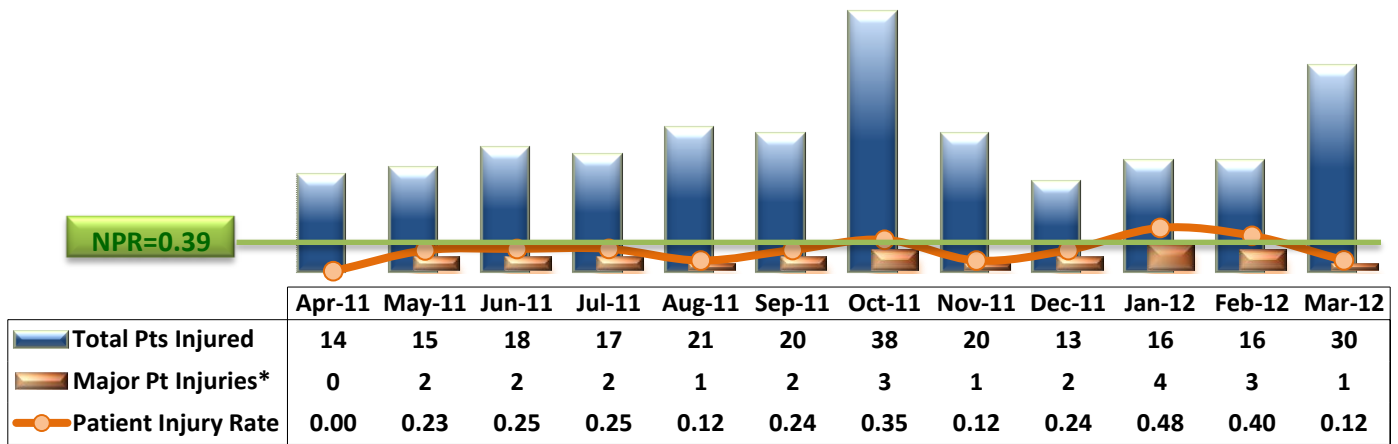
* These are incident types that are frequently reported. Some incidents may be counted in multiple categories. For example, a physical assault incident that accompanied psychiatric emergency and injury is counted under psychiatric emergency and injury as well as under physical assault. Injury is broadly defined to include any type of injuries regardless of the cause or severity level.

10. Physical Assaults by Severity



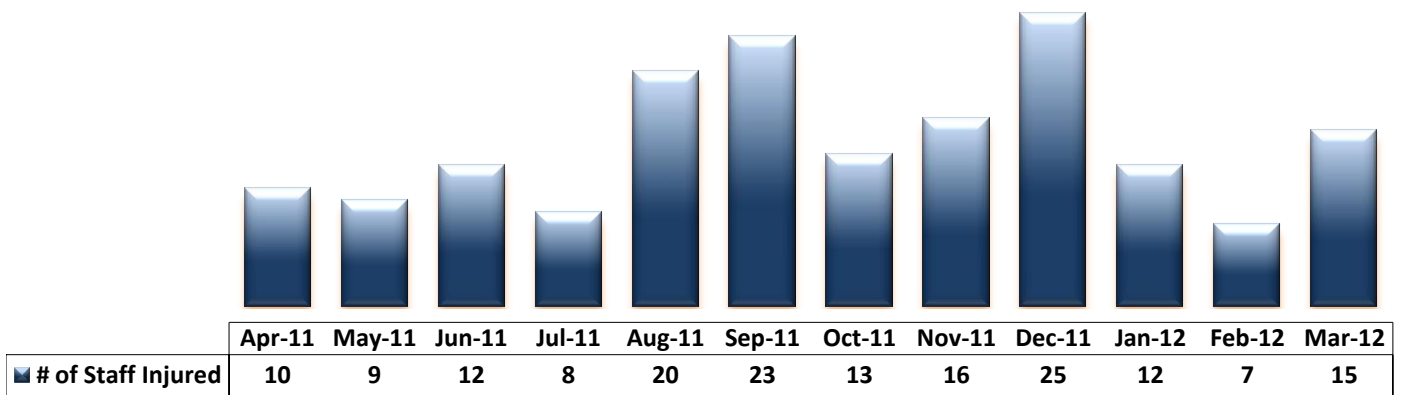
*Any physical assault that accompanies a code 13 or results in extensive injury needing off-unit treatment or transfer to ER is considered to be high severity, any physical assault that causes a minor injury that can be treated on unit is considered to be medium severity, and physical assault events that result in no injury are considered to be low severity.

11. Patient Injuries



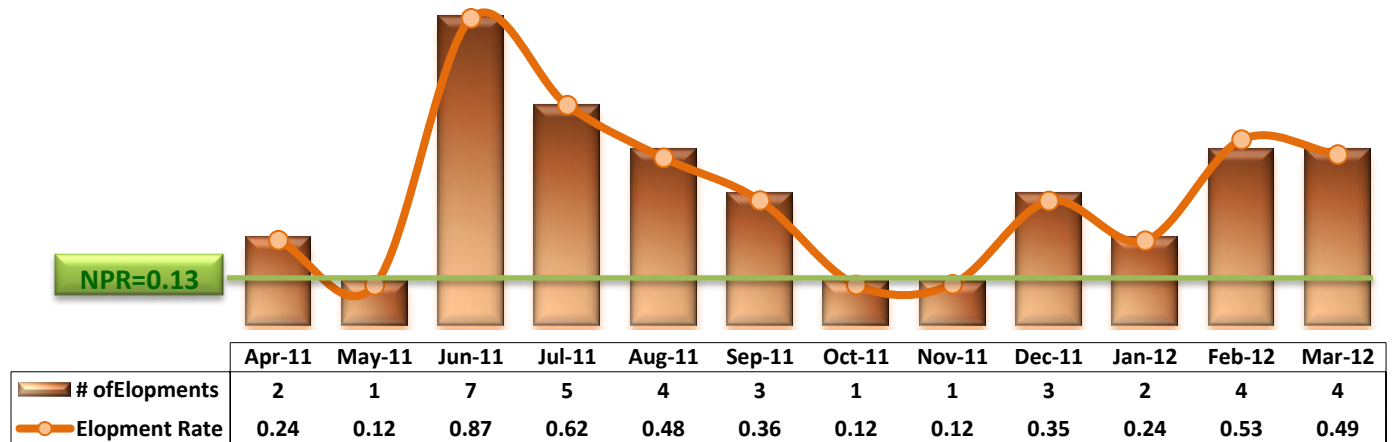
* Injury is broadly defined to include any type of injuries regardless of the cause or severity level. The total number of patients injured represents all of the reported injuries including minor injuries treated with first aid alone. However, the patient injury rate considers only the number of patient injuries that required beyond first-aid level treatment based on the NRI definition and the patient injury rate is the number of 'major' patient injuries per every 1000 inpatient days

12. Staff Injuries



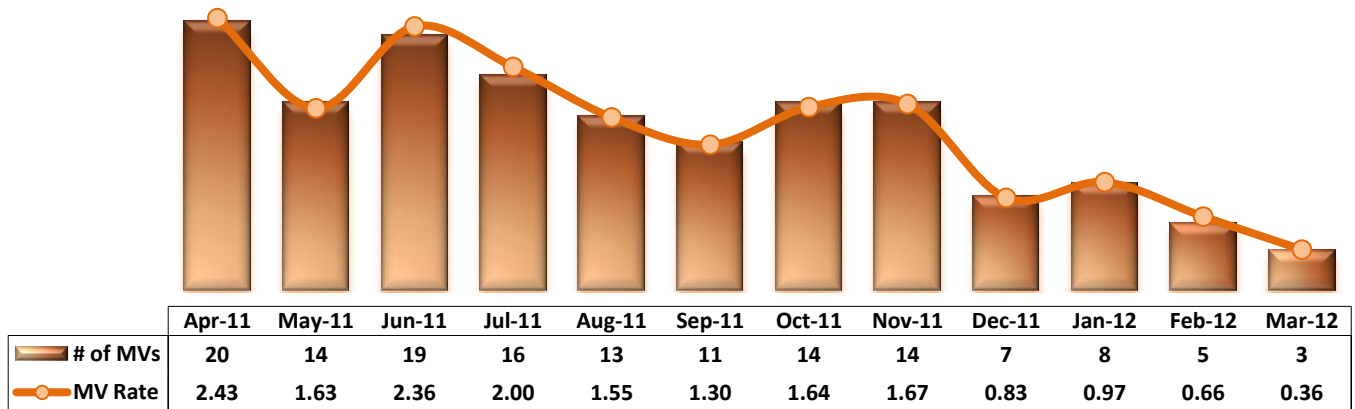
* Injury is broadly defined to include any type of injuries regardless of the cause or severity level. The total number of staff injured represents all of the reported staff injuries including minor injuries treated with first aid alone.

13. Elopements



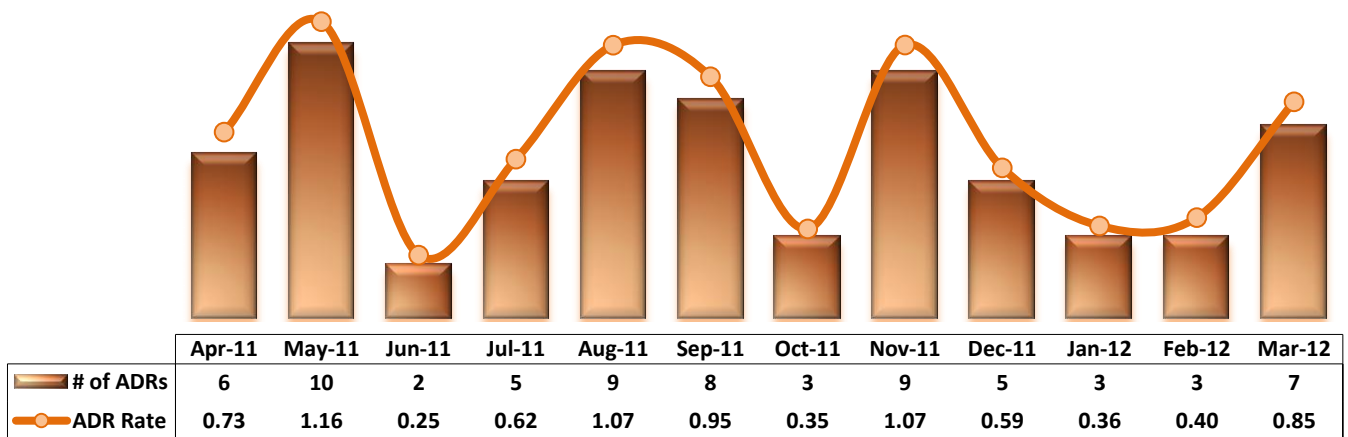
* It counts the total number of unauthorized leaves for any duration that were initiated during month and were recorded in Avatar. The elopement rate is the number of those unauthorized leaves that occurred for every 1000 inpatient days.

14. Reported Medication Variances



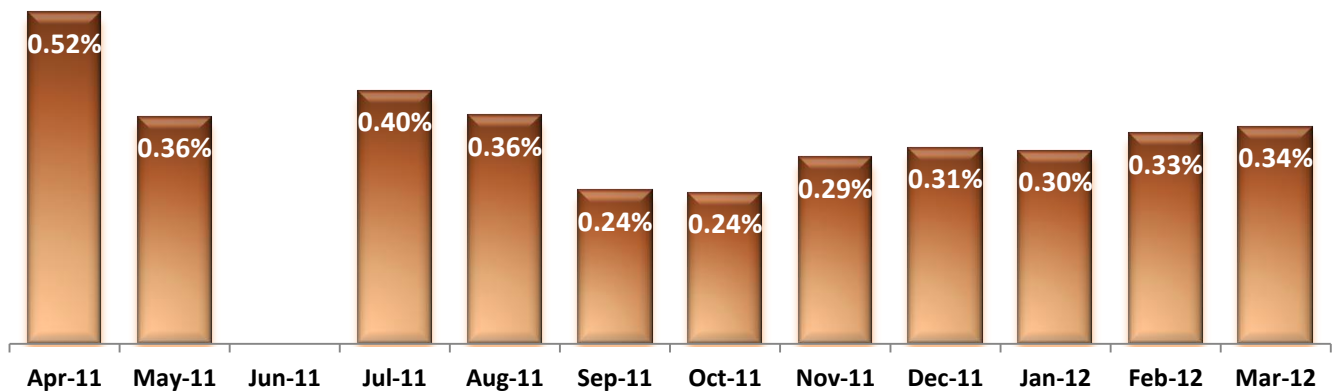
* MV Rate: Number of reported medication variance events that occurred for every 1000 inpatient days.

15. Reported Adverse Drug Reactions



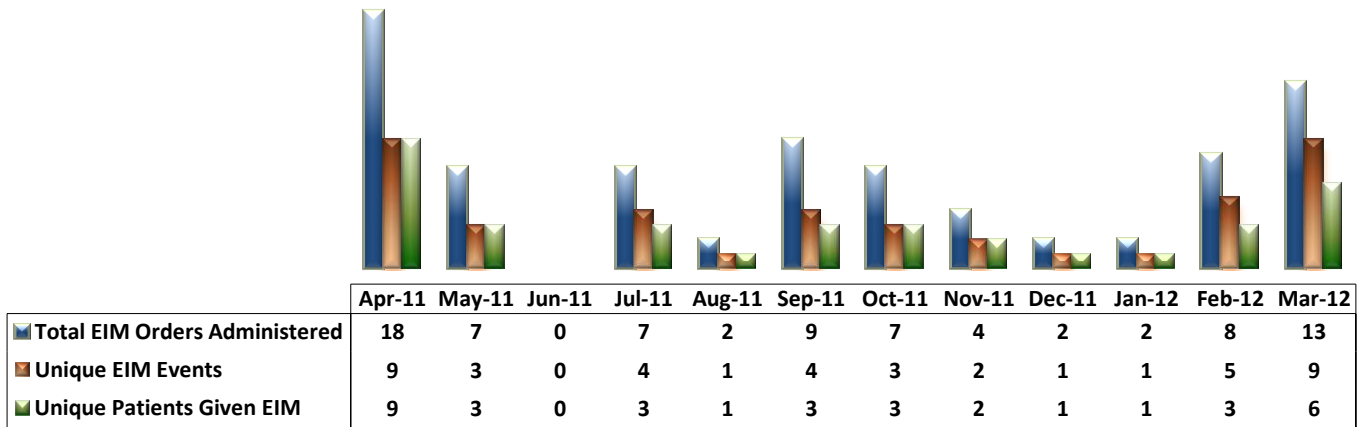
* ADR Rate: Number of reported adverse drug reaction events that occurred for every 1000 inpatient days.

16. Percent of Missing Documentation on Med-Administration



* June-2011 data is not available because of data tracking interruption caused by a technical glitch in Avatar. September-2011 data does not include administration records associated with new orders placed between 9/22/11 and 9/25/11 due to a technical issue that occurred in Avatar and Worx during that time period.

17. Emergency Involuntary Medications Documented in eMar

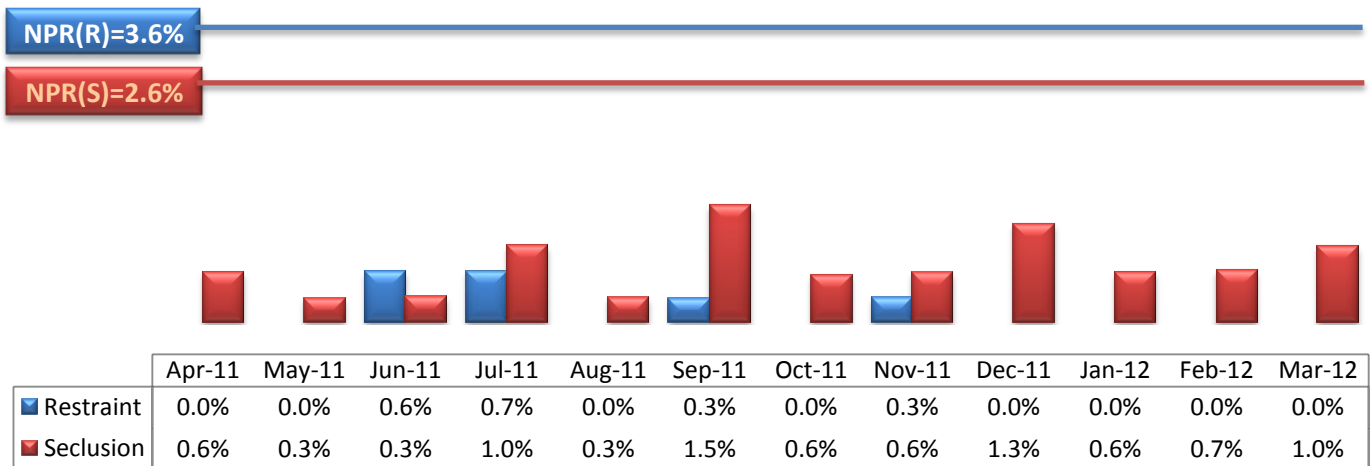


* Some patients may have experienced multiple EIM events during month and some events may have involved multiples doses of medication ordered and administered.

** Unusual incident DB suggests that two EIM events occurred in June 2011 while Avatar eMar recorded none.

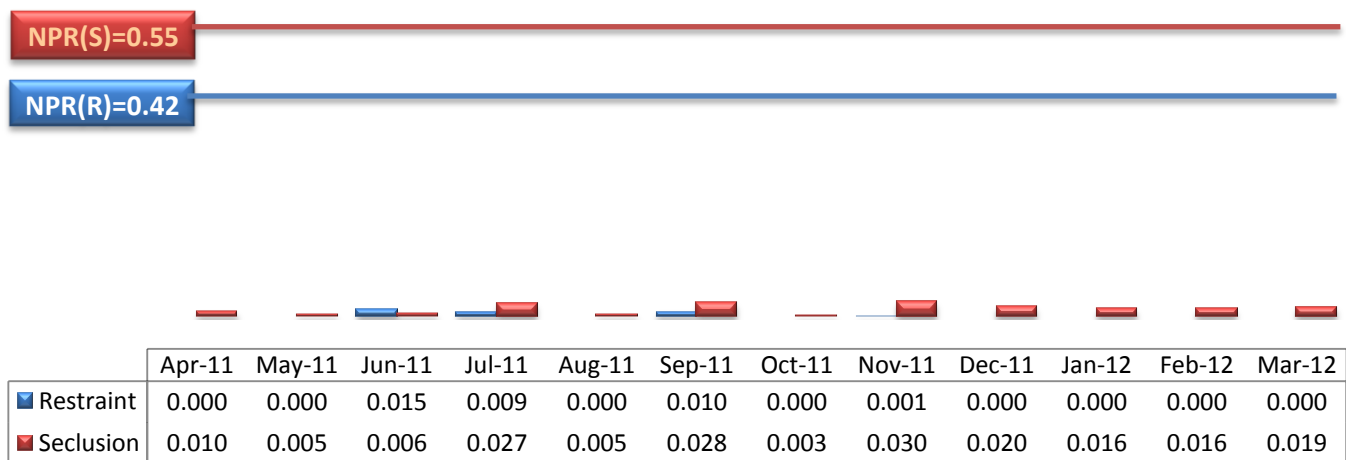
*** Data prior to October 2011 may include 'now' orders in addition to stat emergency orders.

18. Percent of Patients Restrained or Secluded



* Percent of unique patients who were restrained at least once and percent of unique patients who were secluded at least once. The denominator includes all individuals who were served in care >=1 day during month.

19. Restraint Hours Rate & Seclusion Hours Rate



* Restraint/Seclusion Hours Rate: Number of hours spent in restraint/seclusion for every 1000 inpatient hours.

Performance Related Information for Staff & Managers

1. Census, Admissions, Discharges & Transfers

Data Source: Avatar

Updated as of 04/13/12

Category	Apr-11	May-11	Jun-11	Jul-11	Aug-11	Sep-11	Oct-11	Nov-11	Dec-11	Jan-12	Feb-12	Mar-12	Monthly Average	Total (12mths)	Figure	
Admissions	Civil	16	18	8	11	14	16	19	9	19	13	18	14	15	175	Figure 1
	Forensic	22	19	17	23	31	29	19	22	20	16	17	23	22	258	
	Total	38	37	25	34	45	45	38	31	39	29	35	37	36	433	
Discharges	Civil	17	23	14	9	15	21	22	15	13	15	14	17	16	195	Figure 2
	Forensic	12	15	27	22	18	20	21	23	21	33	14	21	21	247	
	Total	29	38	41	31	33	41	43	38	34	48	28	38	37	442	
Net Gain During Month	Civil	-1	-5	-6	2	-1	-5	-3	-6	6	-2	4	-3		-20	
	Forensic	10	4	-10	1	13	9	-2	-1	-1	-17	3	2		11	
	Total	9	-1	-16	3	12	4	-5	-7	5	-19	7	-1		-9	
All Individuals on Roll at End of Month	288	287	271	274	286	290	285	278	283	264	271	274	279			
a. Present on Unit	280	277	261	263	280	280	279	272	275	259	266	266	272			
b. On AL	5	6	5	7	1	6	3	3	6	3	3	5	4			
c. On UL	3	4	5	4	5	4	3	3	2	2	2	3	3			
All Individuals on Roll: Daily Average during Month	283	286	276	268	278	290	282	286	279	275	269	273	279			
a. Present on Unit*	274	277	268	258	271	282	276	280	273	267	262	266	271		Figure 3	
b. On AL	6	5	5	5	3	3	3	3	4	6	5	5	4			
c. On UL	3	4	3	5	4	5	3	3	2	2	2	2	3			
Patient Days*	8217	8601	8050	8008	8407	8448	8544	8402	8471	8268	7588	8246	8271	99250		
Inter-Unit Transfers during Month	8	2	4	4	13	7	10	10	25	5	5	6	8	99	Figure 4	
Medical Leaves Initiated during Month	26	29	19	18	20	21	31	25	14	19	19	28	22	269		
Emergency	35	15	5	12	15	12	14	12	13	10	17	29	16	189		
Non-Emer	61	44	24	30	35	33	45	37	27	29	36	57	38	458		
Non-Medical Leaves Initiated during Month	60	56	45	63	63	53	64	66	82	91	74	99	68	816		
UL Initiated during Month	2	1	7	5	4	3	1	1	3	2	4	4	3	37		
Total Unique Patients Served during Month	311	324	308	305	319	331	330	315	316	312	298	308	315			
30 Day Readmission **	Civil	2	0	0	0	2	1	5	0	1	1	1		1	13	
	Forensic	0	1	1	0	3	1	1	0	2	1	1		1	11	
	Total	2	1	1	0	5	2	6	0	3	2	2		2	24	

* Counts the number of patients who are present on the unit and excludes those on authorized or unauthorized leave at 11:59pm on a given day.

** Number of patients returning within 30 days of discharges that occurred during month.

Performance Related Information for Staff & Managers

2. Key Performance Indicators

Data Source: UI DB, ADR DB, Restraint/Seclusion Log, and Avatar

Updated as of 04/13/12

Category	Apr-11	May-11	Jun-11	Jul-11	Aug-11	Sep-11	Oct-11	Nov-11	Dec-11	Jan-12	Feb-12	Mar-12	Monthly Average	NPR* (Dec-09)	Figure
30 Day Readmit (Discharge Cohort)**	Civil	11.8%	0.0%	0.0%	0.0%	13.3%	4.8%	22.7%	0.0%	7.7%	6.7%	7.1%	7.3%		Figure 5
	Forensic	0.0%	6.7%	3.7%	0.0%	16.7%	5.0%	4.8%	0.0%	9.5%	3.0%	7.1%	4.9%		
	Combined	6.9%	2.6%	2.4%	0.0%	15.2%	4.9%	14.0%	0.0%	8.8%	4.2%	7.1%	5.9%	7.8%	
Number of Unusual Incidents	206	217	201	188	251	230	225	214	160	180	155	319	212		Figure 6
UI by Severity	Catastrophe	1					1					0	0		Figure 7
	High	47	56	45	38	37	39	65	45	27	32	25	44	42	
	Medium	85	97	73	88	107	104	97	103	82	85	81	163	97	
	Low	73	64	83	62	107	87	62	66	51	63	49	112	73	
Patient Unusual Incident Rate	23.37	23.49	23.73	22.60	27.71	24.86	23.99	24.16	17.59	19.96	19.11	36.99	23.99		Figure 8
Selected Types of Incidents	Physical Assault	46	33	49	35	61	52	64	45	27	28	22	46	42	Figure 9
	Psych Emergency	14	16	20	20	24	41	47	24	16	12	9	15	22	
	Fall	20	15	24	15	24	26	14	13	9	22	14	24	18	
	Injury	27	23	26	25	38	34	46	30	30	25	20	39	30	
Assaults by Severity	Physical High	9	8	12	12	8	15	24	15	11	7	3	7	11	Figure 10
	Medium	13	11	12	9	18	14	21	12	9	6	8	18	13	
	Low	24	14	25	14	35	23	19	18	7	15	11	21	19	
Patient Injury Rate***	0.00	0.23	0.25	0.25	0.12	0.24	0.35	0.12	0.24	0.48	0.40	0.12	0.23	0.39	Figure 11
Patients with Major Injuries***	0	2	2	2	1	2	3	1	2	4	3	1	2		
Total Patients Injured***	14	15	18	17	21	20	38	20	13	16	16	30	20		
Total Staff Injured***	10	9	12	8	20	23	13	16	25	12	7	15	14		Figure 12
Elopement Rate	0.24	0.12	0.87	0.62	0.48	0.36	0.12	0.12	0.35	0.24	0.53	0.49	0.47	0.13	Figure 13
Medication Variance Rate	2.43	1.63	2.36	2.00	1.55	1.30	1.64	1.67	0.83	0.97	0.66	0.36	1.45		Figure 14
Adverse Drug Reaction Rate	0.73	1.16	0.25	0.62	1.07	0.95	0.35	1.07	0.59	0.36	0.40	0.85	0.71		Figure 15
Missing Med-Admin Documentation	0.52%	0.36%		0.40%	0.36%	0.24%	0.24%	0.29%	0.31%	0.30%	0.33%	0.34%	0.34%		Figure 16
Emergency Involuntary Meds	18	7	0	7	2	9	7	4	2	2	8	13	7		Figure 17
Unique EIM Events	9	3	0	4	1	4	3	2	1	1	5	9	4		
Unique Patients given EIM	9	3	0	3	1	3	3	2	1	1	3	6	3		
Percent of Patients Restrained	0.0%	0.0%	0.6%	0.7%	0.0%	0.3%	0.0%	0.3%	0.0%	0.0%	0.0%	0.0%	0.2%	3.6%	Figure 18
Percent of Patients Secluded	0.6%	0.3%	0.3%	1.0%	0.3%	1.5%	0.6%	0.6%	1.3%	0.6%	0.7%	1.0%	0.7%	2.6%	
Restraint Hours Rate	0.000	0.000	0.015	0.009	0.000	0.010	0.000	0.001	0.000	0.000	0.000	0.000	0.003	0.42	Figure 19
Seclusion Hours Rate	0.010	0.005	0.006	0.027	0.005	0.028	0.003	0.030	0.020	0.016	0.016	0.019	0.015	0.55	

* National Public Rate, NASMHPD Research Institute

** Percentage of patients returning within 30 days of discharges that occurred during month

Performance Related Information for Staff & Managers

3. Unusual Incident & Medication

Data Source: UI DB, ADR DB, and Avatar

Updated as of 04/13/12

Category	Apr-11	May-11	Jun-11	Jul-11	Aug-11	Sep-11	Oct-11	Nov-11	Dec-11	Jan-12	Feb-12	Mar-12	Monthly Average	Total (12mths)	NPR* (Dec-09)
Total Unusual Incidents**	206	217	201	188	251	230	225	214	160	180	155	319	212	2546	
Total Major Unusual Incidents	127	132	135	117	170	172	168	140	96	124	100	162	137	1643	
Patient Involved UI Only**	192	202	191	181	233	210	205	203	149	165	145	305	198	2381	
<i>Patient UI Rate</i>	<i>23.37</i>	<i>23.49</i>	<i>23.73</i>	<i>22.60</i>	<i>27.71</i>	<i>24.86</i>	<i>23.99</i>	<i>24.16</i>	<i>17.59</i>	<i>19.96</i>	<i>19.11</i>	<i>36.99</i>	<i>23.99</i>		
Unique Patients Involved in UI**	116	121	122	121	120	120	116	128	95	113	99	128	117	1399	
Selected Types of Incidents															
Physical Assault	46	33	49	35	61	52	64	45	27	28	22	46	42	508	
Psych Emergency	14	16	20	20	24	41	47	24	16	12	9	15	22	258	
Fall	20	15	24	15	24	26	14	13	9	22	14	24	18	220	
Injury	27	23	26	25	38	34	46	30	30	25	20	39	30	363	
UI by Catastrophe	1	0	0	0	0	0	1	0	0	0	0	0	0	2	
UI by High Severity	47	56	45	38	37	39	65	45	27	32	25	44	42	500	
UI by Medium Severity	85	97	73	88	107	104	97	103	82	85	81	163	97	1165	
UI by Low Severity	73	64	83	62	107	87	62	66	51	63	49	112	73	879	
Assaults by Physical High Severity	9	8	12	12	8	15	24	15	11	7	3	7	11	131	
Assaults by Physical Medium Severity	13	11	12	9	18	14	21	12	9	6	8	18	13	151	
Assaults by Physical Low Severity	24	14	25	14	35	23	19	18	7	15	11	21	19	226	
Total Patients Injured***	14	15	18	17	21	20	38	20	13	16	16	30	20	238	
Patients with Major Injuries***	0	2	2	2	1	2	3	1	2	4	3	1	2	23	
<i>Patient Injury Rate***</i>	<i>0.00</i>	<i>0.23</i>	<i>0.25</i>	<i>0.25</i>	<i>0.12</i>	<i>0.24</i>	<i>0.35</i>	<i>0.12</i>	<i>0.24</i>	<i>0.48</i>	<i>0.40</i>	<i>0.12</i>	<i>0.23</i>		<i>0.39</i>
Total Staff Injured**	10	9	12	8	20	23	13	16	25	12	7	15	14		
Total UL Incident Reports	3	7	4	5	3	5	4	1	3	2	5	5	4	47	
Total ULs Documented in Avatar	2	1	7	5	4	3	1	1	3	2	4	4	3		
<i>Elopement Rate</i>	<i>0.24</i>	<i>0.12</i>	<i>0.87</i>	<i>0.62</i>	<i>0.48</i>	<i>0.36</i>	<i>0.12</i>	<i>0.12</i>	<i>0.35</i>	<i>0.24</i>	<i>0.53</i>	<i>0.49</i>	<i>0.47</i>		<i>0.13</i>
Med Variance (MV) Reports**	20	14	19	16	13	11	14	14	7	8	5	3	12	144	
<i>MV Rate</i>	<i>2.43</i>	<i>1.63</i>	<i>2.36</i>	<i>2.00</i>	<i>1.55</i>	<i>1.30</i>	<i>1.64</i>	<i>1.67</i>	<i>0.83</i>	<i>0.97</i>	<i>0.66</i>	<i>0.36</i>	<i>1.45</i>		
Adverse Drug Reactions Reports	6	10	2	5	9	8	3	9	5	3	3	7	6	70	
<i>ADR Rate</i>	<i>0.73</i>	<i>1.16</i>	<i>0.25</i>	<i>0.62</i>	<i>1.07</i>	<i>0.95</i>	<i>0.35</i>	<i>1.07</i>	<i>0.59</i>	<i>0.36</i>	<i>0.40</i>	<i>0.85</i>	<i>0.71</i>		
Total Med Administrations Scheduled	97031	101053		96167	96945	95639	103346	101392	101756	99731	93833	105273		1092166	
Total Missing Documentations	507	361		383	349	231	246	297	315	304	311	360		3664	
<i>Percent of Missing Documentation</i>	<i>0.52%</i>	<i>0.36%</i>		<i>0.40%</i>	<i>0.36%</i>	<i>0.24%</i>	<i>0.24%</i>	<i>0.29%</i>	<i>0.31%</i>	<i>0.30%</i>	<i>0.33%</i>	<i>0.34%</i>		<i>0.34%</i>	
Total Patients with >=3 STATs	53	30	18	17	20	24	6	6	2	3	5	3	16		
Total STAT Orders							40	42	14	23	44	28	32		
Emergency STAT Med Orders Administered Involuntarily (EIM)	18	7	0	7	2	9	7	4	2	2	8	13	7		
Unique EIM Events	9	3	0	4	1	4	3	2	1	1	5	9	4		
Unique Patients given EIM	9	3	0	3	1	3	3	2	1	1	3	6	3		

* National Public Rate, NASMHPD Research Institute

** Numbers may change if any additional UI report is made after the data run date from UI database (around the 15th of the following month).

*** Avatar report that indicates the number of patients with 3 or more STATs was unavailable at report run time

Performance Related Information for Staff & Managers

4. Restraint & Seclusion

Data Source: Restraint/Seclusion Log and UI DB (for # of total events and patients) and Avatar (for patient days/hours)

Updated as of 04/13/12

Category	Apr-11	May-11	Jun-11	Jul-11	Aug-11	Sep-11	Oct-11	Nov-11	Dec-11	Jan-12	Feb-12	Mar-12	Monthly Average	Total (12mths)	NPR* (Dec-09)
Number of Restraint Events	0	0	2	2	0	1	0	1	0	0	0	0	0.5	6	
Number of Unique Patients Restrained	0	0	2	2	0	1	0	1	0	0	0	0	0.5		
Percentage of Patients Restrained	0.0%	0.0%	0.6%	0.7%	0.0%	0.3%	0.0%	0.3%	0.0%	0.0%	0.0%	0.0%	0.2%		3.6%
Total Restraint Hours (h:mm)	0:00	0:00	2:50	1:45	0:00	2:00	0:00	0:15	0:00	0:00	0:00	0:00	0:34	6:50	
Restraint Hours Rate	0.000	0.000	0.015	0.009	0.000	0.010	0.000	0.001	0.000	0.000	0.000	0.000	0.003		0.42
Number of Seclusion Events	2	1	1	3	1	6	2	5	5	2	2	3	2.8	33	
Number of Unique Patients Secluded	2	1	1	3	1	5	2	2	4	2	2	3	2.3		
Percentage of Patients Secluded	0.6%	0.3%	0.3%	1.0%	0.3%	1.5%	0.6%	0.6%	1.3%	0.6%	0.7%	1.0%	0.7%		2.6%
Total Seclusion Hours (h:mm)	2:00	1:00	1:11	5:10	1:00	5:37	0:35	6:04	4:10	3:13	3:00	3:50	3:04	36:50	
Seclusion Hours Rate	0.010	0.005	0.006	0.027	0.005	0.028	0.003	0.030	0.020	0.016	0.016	0.019	0.015		0.55

* National Public Rate, NASMHPD Research Institute

Performance Related Information for Staff & Managers

5. Major Incidents by Incident Location/Unit

Data Source: UI DB

Updated as of 04/13/12

Category		Apr-11	May-11	Jun-11	Jul-11	Aug-11	Sep-11	Oct-11	Nov-11	Dec-11	Jan-12	Feb-12	Mar-12	Monthly Average	Total (12mths)	Percent
Total Unusual Incidents		206	217	201	188	251	230	225	214	160	180	155	319	212	2546	
Total Major Incidents*		127	132	135	117	170	172	168	140	96	124	100	162	137	1643	100%
Major Incident Location	1A	13	16	7	9	18	16	13	12	11	13	11	16	13	155	9%
	1B	8	25	16	18	19	24	16	14	8	14	12	17	16	191	12%
	1C	9	3	11	4	10	8	7	1	6	8	3	15	7	85	5%
	1D	14	10	11	5	4	15	29	20	11	9	6	5	12	139	8%
	1E	21	24	15	20	23	29	27	10	8	8	7	15	17	207	13%
	1F	8	11	10	9	3	20	14	17	10	5	10	11	11	128	8%
	1G	14	4	6	10	22	16	24	17	7	11	8	10	12	149	9%
	2A	2	2	3	0	5	3	2	4	3	3	4	7	3	38	2%
	2B	3	2	0	2	1	2	3	2	1	3	2	2	2	23	1%
	2C	7	11	11	6	8	4	6	13	7	8	6	16	9	103	6%
	2D	7	6	11	11	21	9	3	11	6	12	8	18	10	123	7%
	TLC	11	7	19	12	16	11	9	13	9	12	14	21	13	154	9%
	Other	10	11	15	11	20	15	15	6	9	18	9	9	12	148	9%
Total Physical Assault Incidents		46	33	49	35	61	52	64	45	27	28	22	46	42	508	100%
Assault Incident Location	1A	3	3	1	4	5	6	4	2	4	1	0	1	3	34	7%
	1B	1	3	2	3	6	0	2	0	1	1	0	4	2	23	5%
	1C	3	0	6	1	2	2	2	0	2	4	0	3	2	25	5%
	1D	8	5	6	1	0	5	15	11	5	4	4	2	6	66	13%
	1E	13	8	5	8	11	11	8	4	3	0	5	8	7	84	17%
	1F	3	4	4	2	2	7	6	7	3	0	1	1	3	40	8%
	1G	5	0	3	5	8	9	17	10	4	4	4	3	6	72	14%
	2A	0	1	0	0	0	0	0	0	0	0	1	3	0	5	1%
	2B	0	1	0	1	0	1	0	1	0	0	0	0	0	4	1%
	2C	0	3	8	1	4	1	3	3	0	2	0	3	2	28	6%
	2D	3	1	4	7	10	4	1	5	1	6	4	10	5	56	11%
	TLC	5	4	5	2	9	3	5	2	3	4	3	8	4	53	10%
	Other	2	0	5	0	4	3	1	0	0	1	2	0	0	18	4%

Performance Related Information for Staff & Managers

5. Major Incidents by Incident Location/Unit

Data Source: UI DB

Updated as of 04/13/12

Category		Apr-11	May-11	Jun-11	Jul-11	Aug-11	Sep-11	Oct-11	Nov-11	Dec-11	Jan-12	Feb-12	Mar-12	Monthly Average	Total (12mths)	Percent
Total Fall Incidents		20	15	24	15	24	26	14	13	9	22	14	24	18	220	100%
Fall Incident Location	1A	5	1	5	5	4	3	4	5	1	6	3	11	4	53	24%
	1B	2	1	3	5	4	13	4	0	2	1	3	0	3	38	17%
	1C	1	1	0	0	3	0	1	0	0	1	1	2	1	10	5%
	1D	2	2	2	2	0	1	0	1	0	1	0	0	1	11	5%
	1E	0	3	0	0	2	1	0	2	0	2	1	1	1	12	5%
	1F	0	1	0	0	0	2	1	1	0	0	0	0	1	6	3%
	1G	0	0	0	0	0	1	1	0	0	0	0	0	0	2	1%
	2A	1	0	0	0	1	0	0	1	0	1	0	0	0	4	2%
	2B	1	0	0	0	1	0	0	0	0	1	2	1	1	7	3%
	2C	2	2	1	0	0	1	0	0	0	2	0	3	1	11	5%
	2D	2	0	2	1	5	1	1	1	1	1	0	3	2	18	8%
	TLC	3	2	9	2	3	1	1	1	2	0	4	0	2	28	13%
	Other	1	2	2	0	1	2	1	1	1	2	5	1	2	20	9%
Total Injury Incidents		27	23	26	25	38	34	46	30	30	25	20	39	30	363	100%
Injury Incident Location	1A	3	2	1	4	6	3	3	3	3	2	3	2	3	35	10%
	1B	2	6	1	3	2	4	3	0	0	2	0	4	2	27	7%
	1C	2	1	1	1	3	0	2	0	1	2	0	2	1	15	4%
	1D	3	2	4	1	0	3	8	5	5	2	3	2	3	38	10%
	1E	2	5	3	1	6	6	9	3	4	1	2	5	4	47	13%
	1F	1	3	3	2	0	4	3	6	4	4	1	0	3	31	9%
	1G	4	0	0	0	5	3	8	4	3	1	5	2	3	35	10%
	2A	0	0	0	0	0	0	1	0	0	0	0	2	0	3	1%
	2B	0	0	0	1	1	0	0	1	0	1	0	1	0	5	1%
	2C	1	0	1	4	4	1	1	2	1	1	1	3	2	20	6%
	2D	2	1	2	3	2	4	1	4	1	2	0	7	2	29	8%
	TLC	6	1	5	4	2	1	4	1	2	0	4	5	3	35	10%
	Other	1	2	5	1	7	5	3	1	6	7	1	4	4	43	12%

* Not every incident is a major incident. This counts only those major incidents that required extensive investigations from the risk manager.

- Annex A/B Closed in February 2011. All patients were transferred to other units.

Performance Related Information for Staff & Managers

6. Demographic Information of Individuals in Care

Data Source: Avatar

Updated as of 04/13/12

Category	Sub-group	Apr-11	May-11	Jun-11	Jul-11	Aug-11	Sep-11	Oct-11	Nov-11	Dec-11	Jan-12	Feb-12	Mar-12	Monthly Average	Percent*
Total Active (on Roll) at End of Month*		288	287	271	274	286	290	285	278	283	264	271	274	279	
Gender	Female	69	72	59	58	68	69	64	60	63	60	68	71	65	23.3%
	Male	219	215	212	216	218	221	221	218	220	204	203	199	214	76.6%
Age	Median Age (Years)	55 yrs	55 yrs	55 yrs	55 yrs	54 yrs	55 yrs	55 yrs	55 yrs	54 yrs	55 yrs	55 yrs	55 yrs	55 yrs	
	<30 years old	19	20	18	18	18	24	24	27	20	13	14	20	20	7.0%
	>=30 and <40 years old	29	30	23	24	27	21	21	20	28	29	33	33	27	9.5%
	>=40 and <50 years old	47	47	45	48	53	52	53	48	51	45	46	42	48	17.2%
	>=50 and <60 years old	113	111	107	105	108	107	106	103	102	95	96	96	104	37.3%
	>=60 years old	80	79	78	79	80	86	81	80	81	82	82	79	81	28.9%
Legal Status of Individuals on Roll at End of Month	Emergency	22	15	14	18	20	15	16	16	19	19	25	19	18	6.5%
	Inpatient Commitment	30	30	33	32	32	31	32	27	27	27	27	27	30	10.6%
	Outpatient Commitment	28	30	26	25	26	28	22	24	27	22	22	25	25	9.1%
	Voluntary	41	41	40	41	38	41	40	39	39	42	41	42	40	14.5%
	Non-Protesting	1	1	1	1	1	0	0	0	0	0	0	0	0	0.1%
	Civil Sub-total	122	117	114	117	117	115	110	106	112	110	115	113	114	40.8%
	DC Exam	49	51	38	44	54	61	61	60	63	49	50	50	53	18.8%
	Mentally Incompetent	4	4	3	3	4	3	3	3	2	3	2	4	3	1.1%
	NGBRI - DC	96	96	98	93	95	94	95	93	91	88	89	89	93	33.3%
	NGBRI - US	10	12	12	12	11	12	11	11	10	10	11	10	11	3.9%
NGBRI - VI	2	2	2	1	1	1	1	1	1	1	1	1	1	0.4%	
Dual Commitment	1	1	1	1	1	1	1	1	1	1	1	1	1	0.4%	
Sexual Psychopath (Miller Ac)	4	4	3	3	3	3	3	3	3	2	2	2	3	1.0%	
Forensic Sub-total	166	170	157	157	169	175	175	172	171	154	156	157	165	59.1%	
Length of Stay	Median LOS (Days)	923 d	949 d	1073 d	1043 d	856 d	844 d	884 d	915 d	876 d	977 d	950 d	974 d	939 d	
	Average LOS (Days)	3069 d	3093 d	3261 d	3194 d	3033 d	2978 d	2988 d	3053 d	2977 d	3150 d	3089 d	3088 d	3081 d	
	<30 Days	34	30	22	33	39	39	30	29	33	27	32	32	32	11.3%
	>=30 ~ <365 Days	68	72	69	61	68	72	78	77	79	68	69	66	71	25.3%
	>= 1 Year & < 2 Years	32	29	25	27	25	24	22	20	20	22	21	23	24	8.7%
	>= 2 Years & < 5 Years	40	43	43	43	45	46	46	43	42	39	40	41	43	15.2%
	>= 5 Years & < 20 Years	67	65	64	63	62	61	61	62	63	63	64	63	63	22.6%
>= 20 Years	47	48	48	47	47	48	48	47	46	45	45	45	47	16.7%	

* Counts the total number of individuals who are on the hospital roll at end of each month. This number serves as denominator to calculate percentage of each group.