

**Government of the District of Columbia
Department of Mental Health (DMH)**

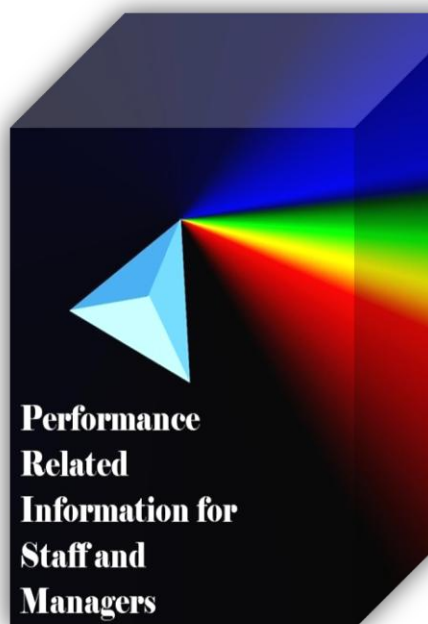


Performance Related Information for Staff and Managers

PRISM

NOVEMBER 2012

Table of Contents

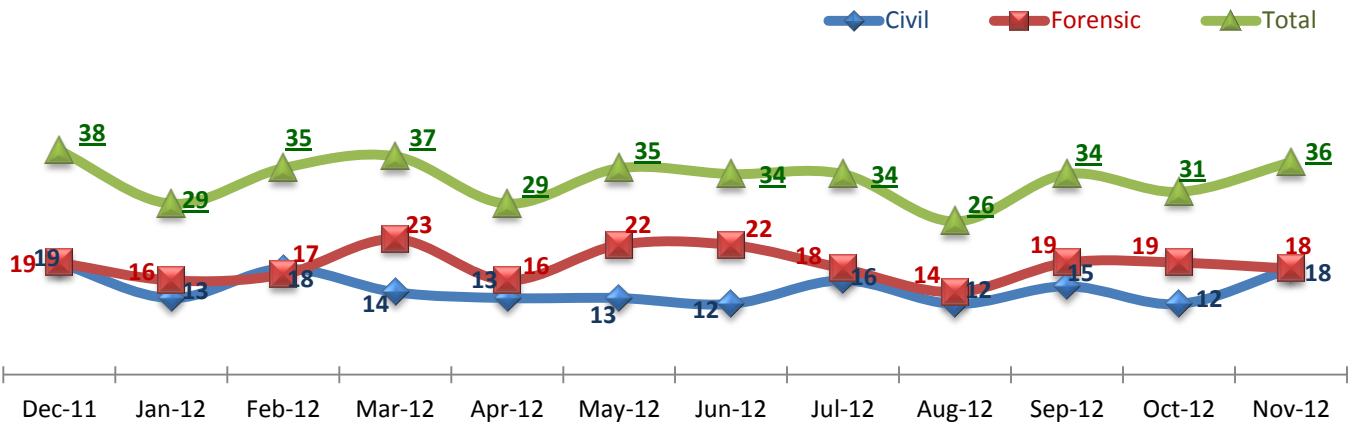


1.	Admissions to SEH	1
2.	Discharges from SEH.....	1
3.	Average Daily Census	1
4.	Transfers	2
5.	30-Day Readmission Rate	2
6.	Unusual Incidents.....	2
7.	Unusual Incidents by Severity	3
8.	Patient-Involved Unusual Incidents.....	3
9.	Selected Types of Incidents	4
10.	Physical Assaults by Severity	4
11.	Patient Injuries.....	5
12.	Staff Injuries.....	5
13.	Eloperments	5
14.	Reported Medication Variance Events	6
15.	Reported Adverse Drug Reactions.....	6
16.	Percent of Missing Documentation on Med-Administration.....	6
17.	Percent of Patients Restrained or Secluded.....	6
18.	Restraint Hours Rate & Seclusion Hours Rate	7
	<input type="checkbox"/> Appendix 1) Table – Census, Admissions & Discharges	
	<input type="checkbox"/> Appendix 2) Table – Key Performance Indicators	
	<input type="checkbox"/> Appendix 3) Table – Unusual Incident & Medication	
	<input type="checkbox"/> Appendix 4) Table – Restraint & Seclusion	
	<input type="checkbox"/> Appendix 5) Table – Major Incidents by Incident Location/Unit	
	<input type="checkbox"/> Appendix 6) Table – Demographic Information of Individuals in Care	

12/13/2012

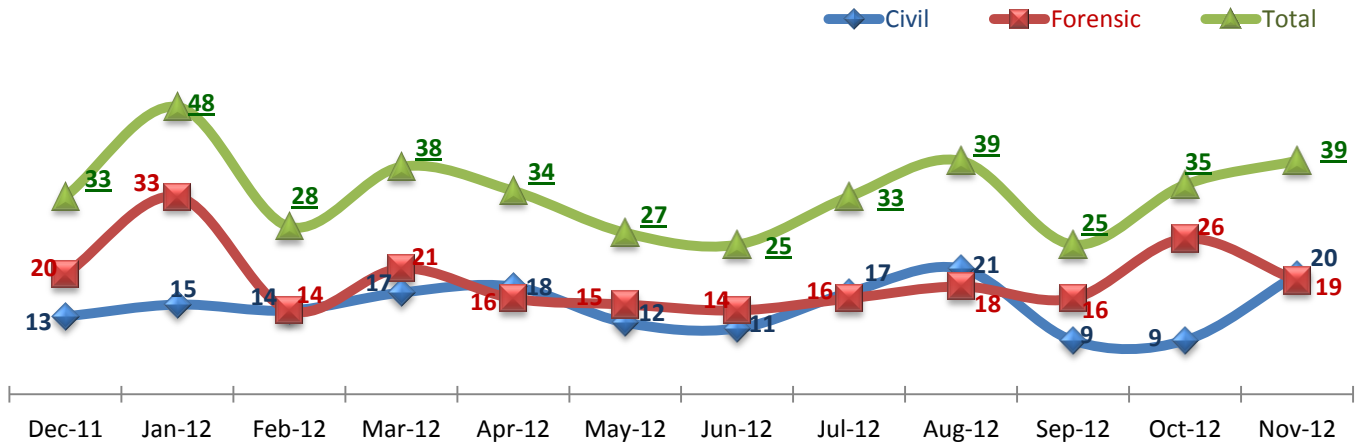
Office of Statistics and Reporting (OSR)

1. Admissions to SEH



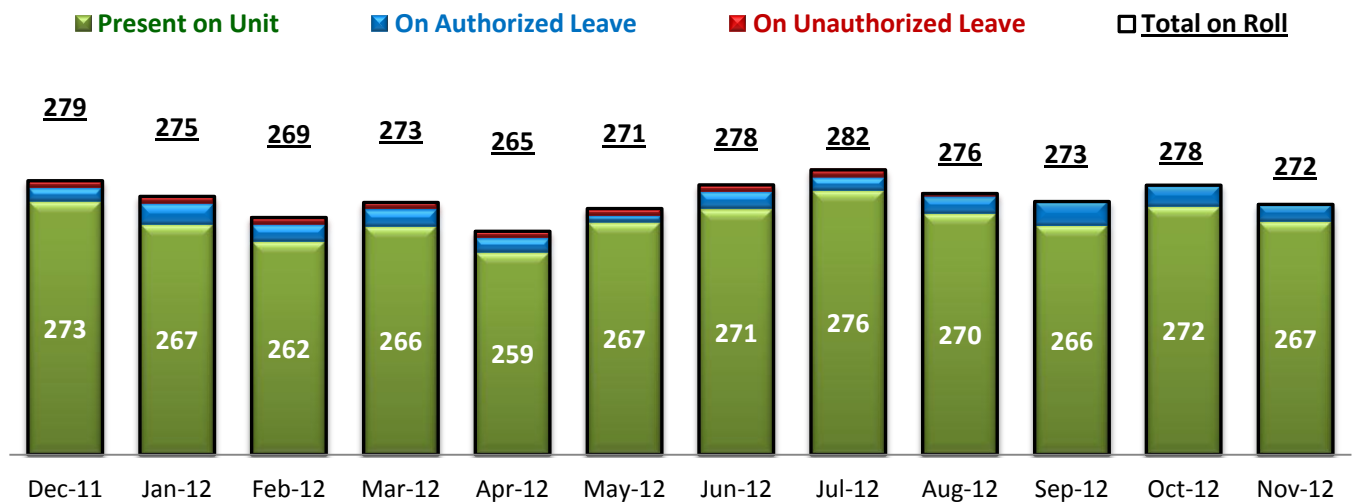
* Number of admissions to SEH inpatient program, including transfers from outpatient to inpatient program.

2. Discharges from SEH



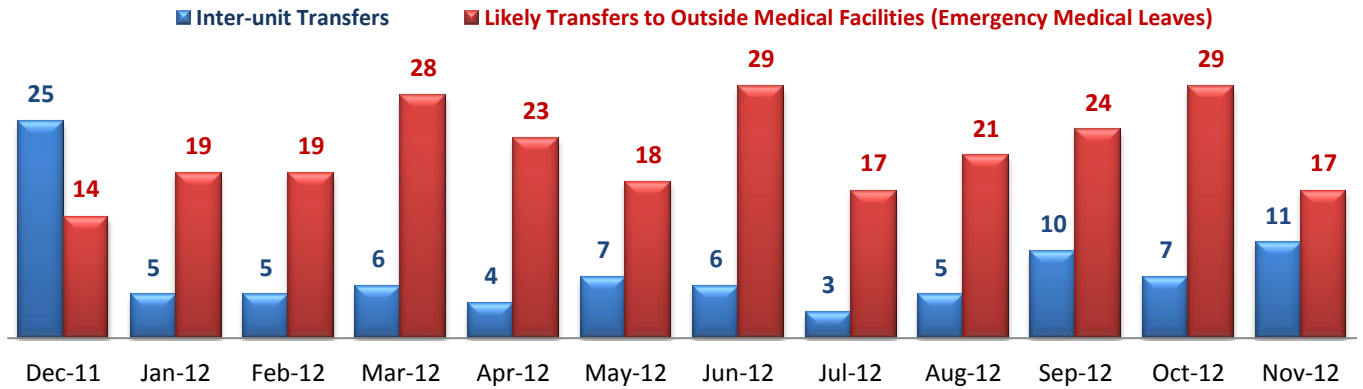
* Number of discharges from SEH inpatient program, including transfers from inpatient to outpatient program.

3. Average Daily Census



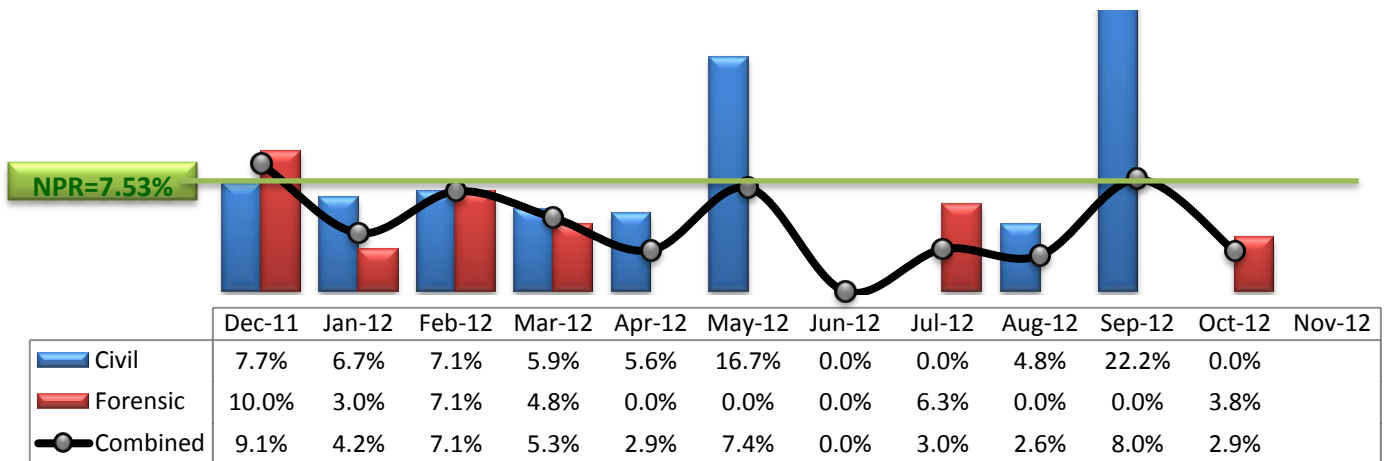
* Data above is the daily average number of individuals counted at 11:59 PM every day during each month.

4. Transfers



* Number of inter-unit transfers that occurred during month and number of emergency medical leaves that were initiated during month.

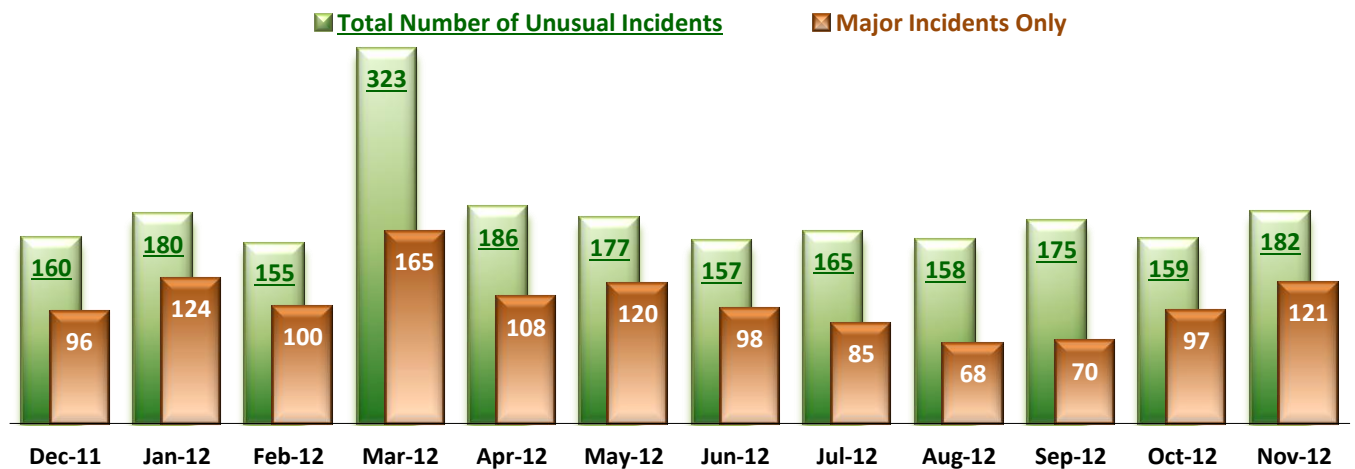
5. 30-Day Readmission Rate



* Percent of discharges that returned to SEH within 30 days of discharges. It does not include those who may have been re-hospitalized at another psychiatric facility. This measure requires 30-day observation following discharge.

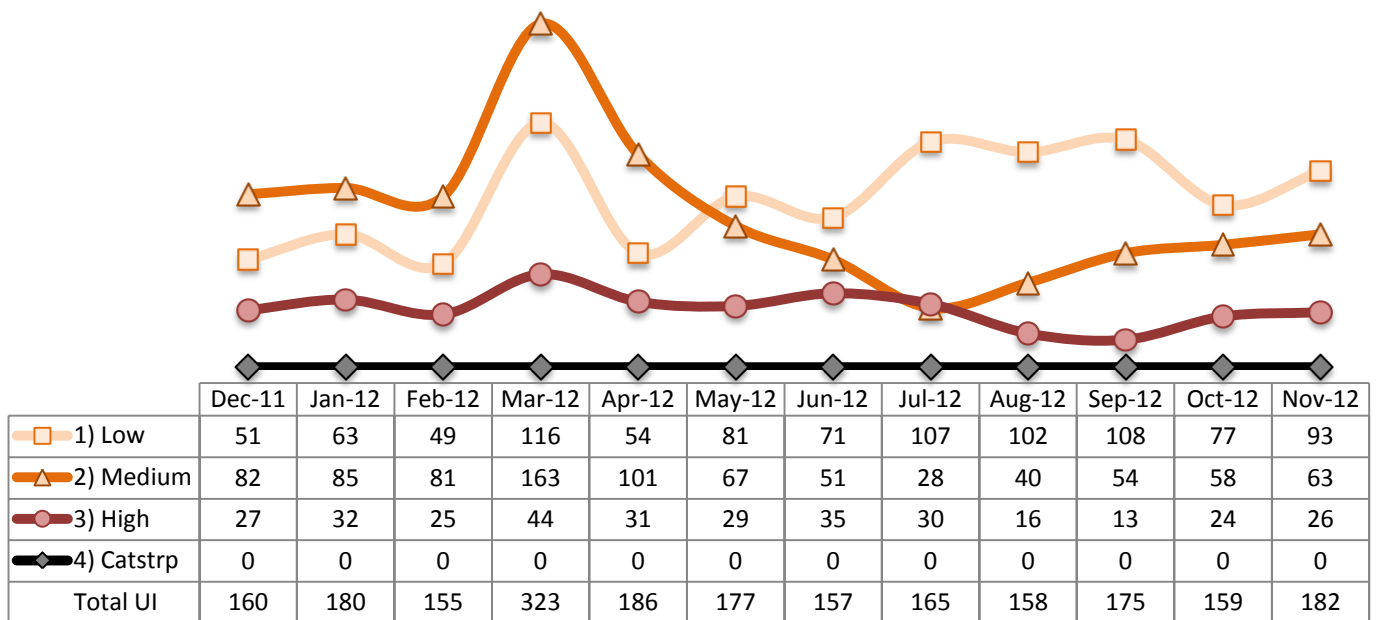
** NPR: National Public Rate as of September 2011 published by NASMHPD Research Institute in January 2012.

6. Unusual Incidents

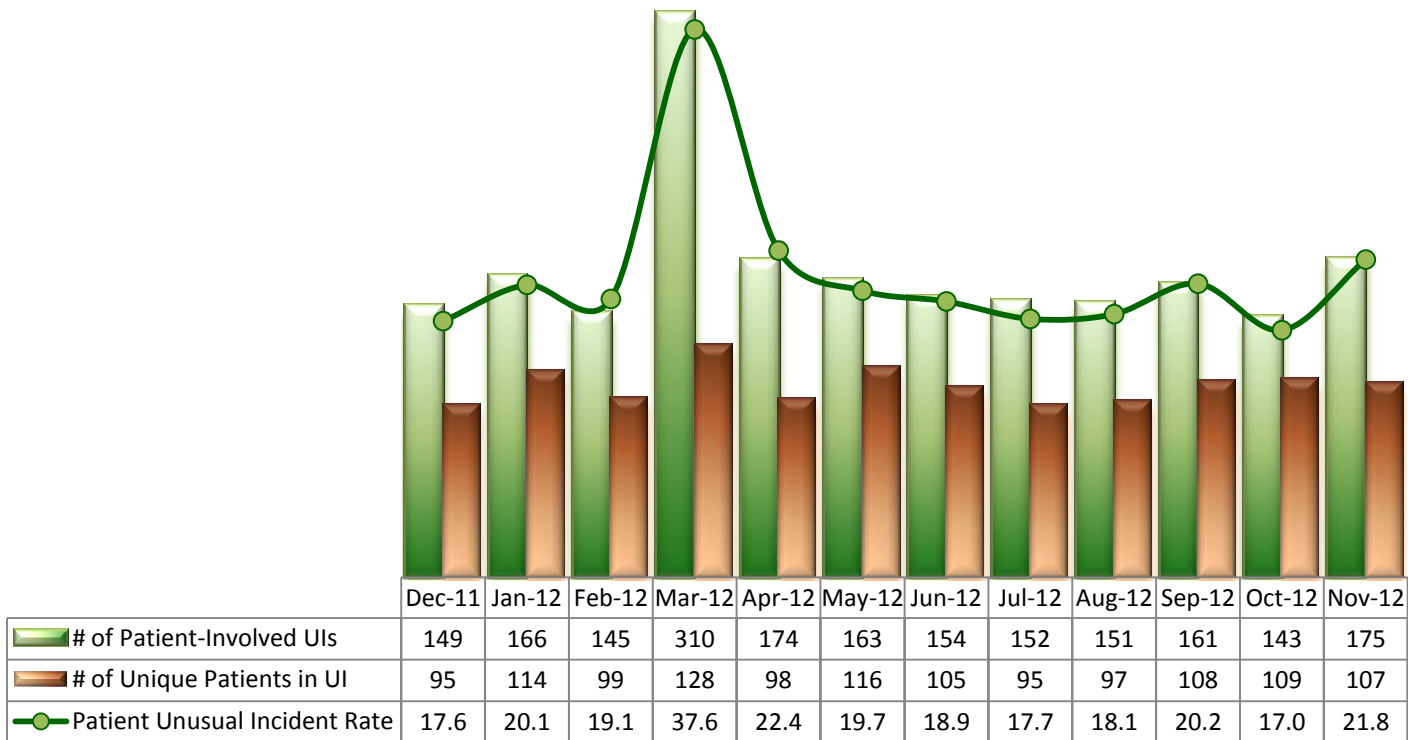


* Numbers above represent all types of the unusual incidents (UIs) that were reported to the Risk Manager by PRISM publication date, including those that did not involve any patients.

7. Unusual Incidents by Severity

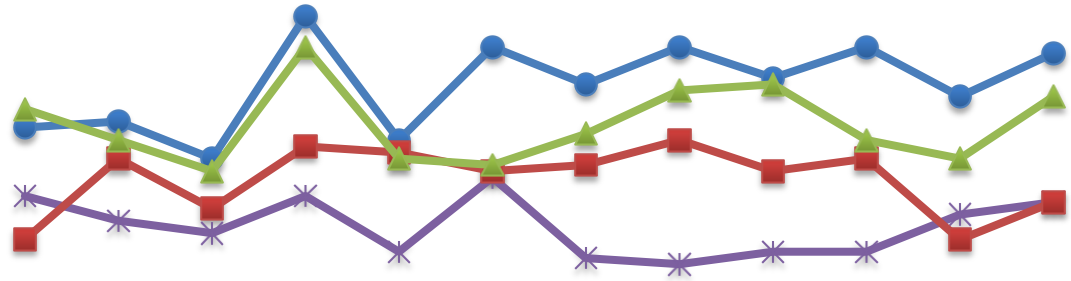


8. Patient-Involved Unusual Incidents



*The total number of patient-involved UIs counts only those incidents that involved at least one or more patients. Some patients may be involved in more than one incident and the number of unique patients does not double count them. The patient UI rate is the number of patient-involved unusual incidents reported for every 1000 inpatient days.

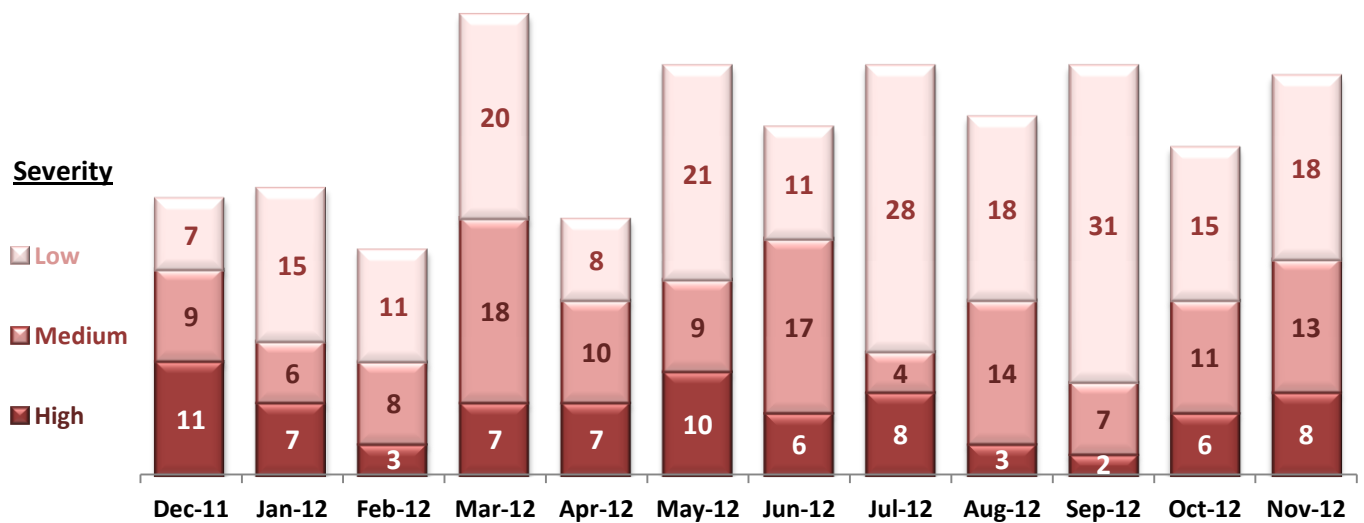
9. Selected Types of Incidents



	Dec-11	Jan-12	Feb-12	Mar-12	Apr-12	May-12	Jun-12	Jul-12	Aug-12	Sep-12	Oct-12	Nov-12
Physical Assault	27	28	22	45	25	40	34	40	35	40	32	39
Psych Emergency	16	12	10	16	7	19	6	5	7	7	13	15
Fall	9	22	14	24	23	20	21	25	20	22	9	15
Injury	30	25	20	40	22	21	26	33	34	25	22	32

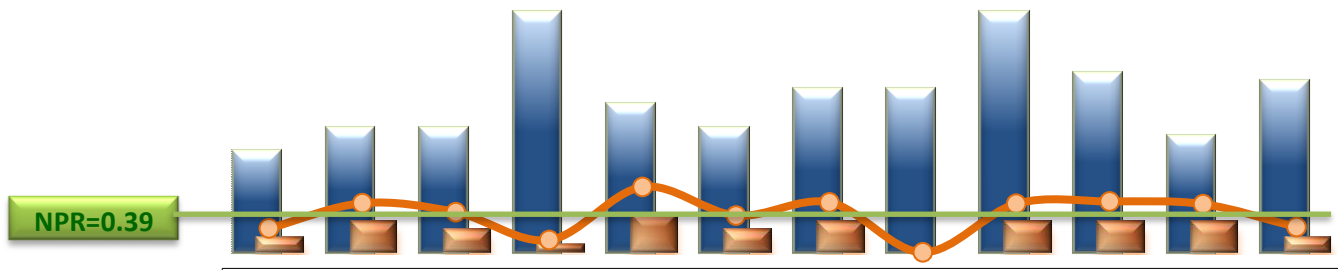
* These are incident types that are frequently reported. Some incidents may be counted in multiple categories. For example, a physical assault incident that accompanied psychiatric emergency and injury is counted under psychiatric emergency and injury as well as under physical assault. Injury is broadly defined to include any type of injuries regardless of the cause or severity level.

10. Physical Assaults by Severity



* Any physical assault that accompanies a code 13 or results in extensive injury needing off-unit treatment or transfer to ER is considered to be high severity, any physical assault that causes a minor injury that can be treated on unit is considered to be medium severity, and physical assault events that result in no injury are considered to be low severity.

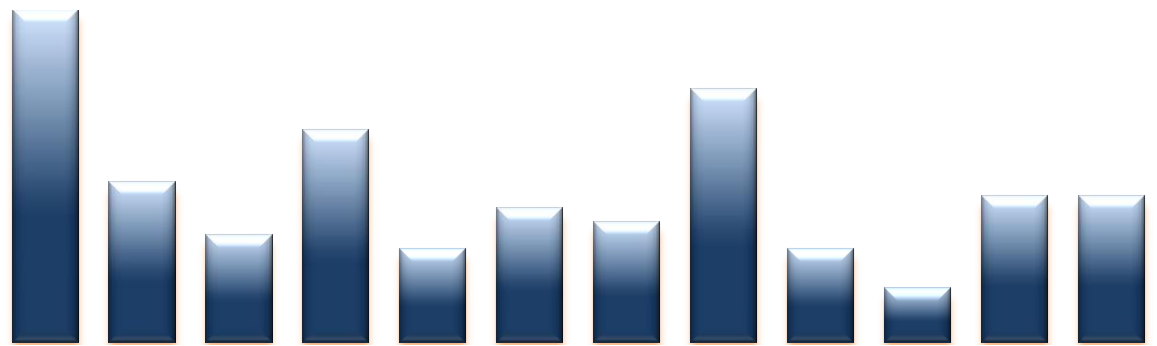
11. Patient Injuries



	Dec-11	Jan-12	Feb-12	Mar-12	Apr-12	May-12	Jun-12	Jul-12	Aug-12	Sep-12	Oct-12	Nov-12
Total Pts Injured	13	16	16	31	19	16	21	21	31	23	15	22
Major Pt Injuries*	2	4	3	1	5	3	4	0	4	4	4	2
Patient Injury Rate	0.24	0.48	0.40	0.12	0.64	0.36	0.49	0.00	0.48	0.50	0.47	0.25

* Injury is broadly defined to include any type of injuries regardless of the cause or severity level. The total number of patients injured represents all of the reported injuries including minor injuries treated with first aid alone. However, the patient injury rate considers only the number of patient injuries that required beyond first-aid level treatment based on the NRI definition and the patient injury rate is the number of 'major' patient injuries per every 1000 inpatient days

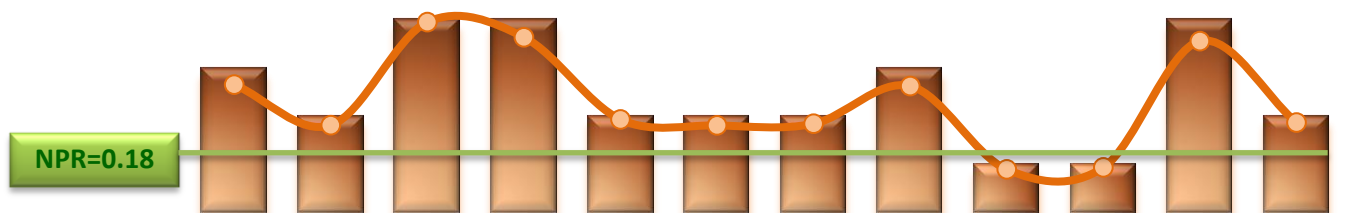
12. Staff Injuries



	Dec-11	Jan-12	Feb-12	Mar-12	Apr-12	May-12	Jun-12	Jul-12	Aug-12	Sep-12	Oct-12	Nov-12
# of Staff Injured	25	12	8	16	7	10	9	19	7	4	11	11

* Injury is broadly defined to include any type of injuries regardless of the cause or severity level. The total number of staff injured represents all of the reported staff injuries including minor injuries treated with first aid alone.

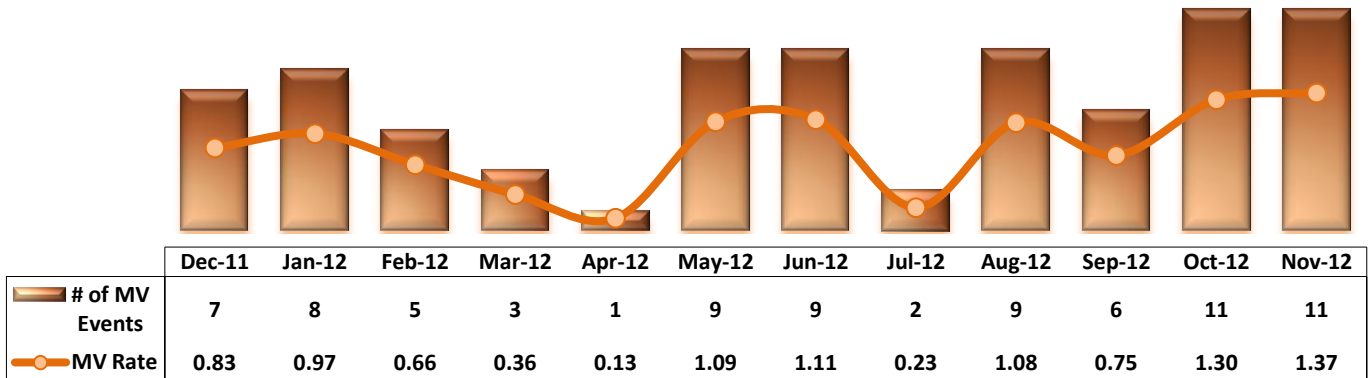
13. Elopements



	Dec-11	Jan-12	Feb-12	Mar-12	Apr-12	May-12	Jun-12	Jul-12	Aug-12	Sep-12	Oct-12	Nov-12
# of Elopements	3	2	4	4	2	2	2	3	1	1	4	2
Elopement Rate	0.35	0.24	0.53	0.49	0.26	0.24	0.25	0.35	0.12	0.13	0.47	0.25

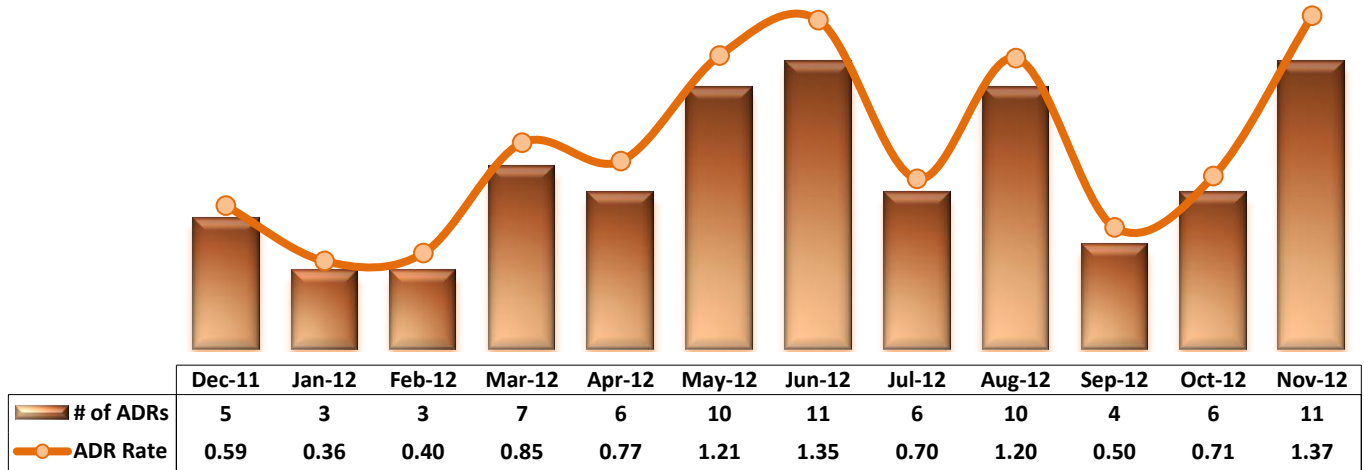
* It counts the total number of unauthorized leaves for any duration that were initiated during month and were recorded in Avatar. The elopement rate is the number of those unauthorized leaves that occurred for every 1000 inpatient days.

14. Reported Medication Variance Events



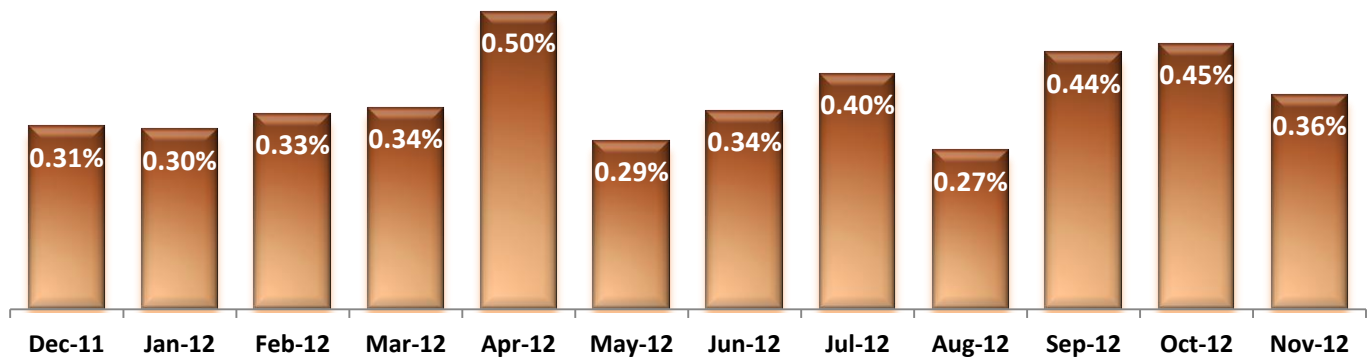
* MV Rate: Number of reported medication variance events that occurred for every 1000 inpatient days.

15. Reported Adverse Drug Reactions



* ADR Rate: Number of reported adverse drug reaction events that occurred for every 1000 inpatient days.

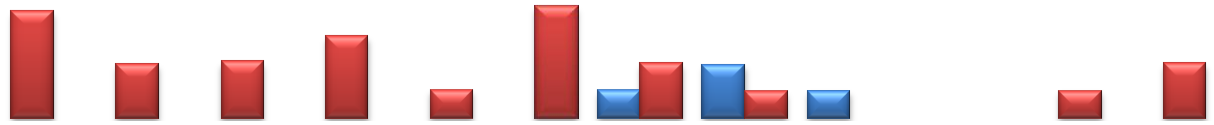
16. Percent of Missing Documentation on Med-Administration



17. Percent of Patients Restrained or Secluded

NPR(R)=5.3%

NPR(S)=2.2%



	Dec-11	Jan-12	Feb-12	Mar-12	Apr-12	May-12	Jun-12	Jul-12	Aug-12	Sep-12	Oct-12	Nov-12
Restraint	0.0%	0.0%	0.0%	0.0%	0.0%	0.0%	0.3%	0.6%	0.3%	0.0%	0.0%	0.0%
Seclusion	1.3%	0.6%	0.7%	1.0%	0.3%	1.3%	0.7%	0.3%	0.0%	0.0%	0.3%	0.7%

* Percent of unique patients who were restrained at least once and percent of unique patients who were secluded at least once. The denominator includes all individuals who were served in care >=1 day during month.

18. Restraint Hours Rate & Seclusion Hours Rate

NPR(R)=0.46

NPR(S)=0.41



	Dec-11	Jan-12	Feb-12	Mar-12	Apr-12	May-12	Jun-12	Jul-12	Aug-12	Sep-12	Oct-12	Nov-12
Restraint	0.000	0.000	0.000	0.000	0.000	0.000	0.005	0.001	0.010	0.000	0.000	0.000
Seclusion	0.020	0.016	0.016	0.019	0.004	0.031	0.057	0.005	0.000	0.000	0.038	0.016

* Restraint/Seclusion Hours Rate: Number of hours spent in restraint/seclusion for every 1000 inpatient hours.

Performance Related Information for Staff & Managers

1. Census, Admissions, Discharges & Transfers

Data Source: Avatar

Updated as of 12/12/12

Category	Dec-11	Jan-12	Feb-12	Mar-12	Apr-12	May-12	Jun-12	Jul-12	Aug-12	Sep-12	Oct-12	Nov-12	Monthly Average	Total (12mths)	Figure	
Admissions	Civil	19	13	18	14	13	13	12	16	12	15	12	18	15	175	Figure 1
	Forensic	19	16	17	23	16	22	22	18	14	19	19	18	19	223	
	Total	38	29	35	37	29	35	34	34	26	34	31	36	33	398	
Discharges	Civil	13	15	14	17	18	12	11	17	21	9	9	20	15	176	Figure 2
	Forensic	20	33	14	21	16	15	14	16	18	16	26	19	19	228	
	Total	33	48	28	38	34	27	25	33	39	25	35	39	34	404	
Net Gain During Month	Civil	6	-2	4	-3	-5	1	1	-1	-9	6	3	-2		-1	
	Forensic	-1	-17	3	2	0	7	8	2	-4	3	-7	-1		-5	
	Total	5	-19	7	-1	-5	8	9	1	-13	9	-4	-3		-6	
All Individuals on Roll at End of Month	283	264	271	270	265	273	282	283	270	279	275	272	274			
a. Present on Unit	275	259	266	262	260	267	275	277	259	275	270	270	268			
b. On AL	6	3	3	6	3	5	5	4	10	4	5	2	5			
c. On UL	2	2	2	2	2	1	2	2	1	0	0	0	1			
All Individuals on Roll: Daily Average during Month	279	275	269	273	265	271	278	282	276	273	278	272	274			
a. Present on Unit*	273	267	262	266	259	267	271	276	270	266	272	267	268		Figure 3	
b. On AL	4	6	5	5	4	2	5	4	5	7	6	5	5			
c. On UL	2	2	2	2	2	2	2	2	1	0	0	0	1			
Patient Days*	8471	8268	7588	8246	7759	8284	8132	8568	8358	7988	8430	8024	8176	98116		
Inter-Unit Transfers during Month	25	5	5	6	4	7	6	3	5	10	7	11	8	94	Figure 4	
Medical Leaves Initiated during Month	14	19	19	28	23	18	29	17	21	24	29	17	22	258		
Emergency	13	10	17	29	29	34	46	43	16	33	16	24	26	310		
Non-Emer	27	29	36	57	52	52	75	60	37	57	45	41	47	568		
Non-Medical Leaves Initiated during Month	82	91	74	99	105	145	142	126	95	103	95	104	105	1261		
UL Initiated during Month	3	2	4	4	2	2	2	3	1	1	4	2	3	30		
Total Unique Patients Served during Month	314	311	298	306	300	298	306	316	309	302	310	306	306			
30 Day Readmission **	Civil	1	1	1	1	1	2	0	0	1	2	0		1	10	
	Forensic	2	1	1	1	0	0	0	1	0	0	1		1	7	
	Total	3	2	2	2	1	2	0	1	1	2	1		2	17	

* Counts the number of patients who are present on the unit and excludes those on authorized or unauthorized leave at 11:59pm on a given day.

** Number of patients returning within 30 days of discharges that occurred during month.

Performance Related Information for Staff & Managers

2. Key Performance Indicators

Data Source: UI DB, ADR DB, Restraint/Seclusion Log, and Avatar

Updated as of 12/12/12

Category	Dec-11	Jan-12	Feb-12	Mar-12	Apr-12	May-12	Jun-12	Jul-12	Aug-12	Sep-12	Oct-12	Nov-12	Monthly Average	NPR* (Sep-11)	Figure
30 Day Readmit (Discharge Cohort)**	Civil	7.7%	6.7%	7.1%	5.9%	5.6%	16.7%	0.0%	0.0%	4.8%	22.2%	0.0%	6.2%		Figure 5
	Forensic	10.0%	3.0%	7.1%	4.8%	0.0%	0.0%	0.0%	6.3%	0.0%	0.0%	3.8%	3.3%		
	Combined	9.1%	4.2%	7.1%	5.3%	2.9%	7.4%	0.0%	3.0%	2.6%	8.0%	2.9%	4.6%	7.5%	
Number of Unusual Incidents	160	180	155	323	186	177	157	165	158	175	159	182	181		Figure 6
UI by Severity	Catastrophe	0	0	0	0	0	0	0	0	0	0	0			Figure 7
	High	27	32	25	44	31	29	35	30	16	13	24	26	28	
	Medium	82	85	81	163	101	67	51	28	40	54	58	63	73	
	Low	51	63	49	116	54	81	71	107	102	108	77	93	81	
Patient Unusual Incident Rate	17.6	20.1	19.1	37.6	22.4	19.7	18.9	17.7	18.1	20.2	17.0	21.8	20.8		Figure 8
Selected Types of Incidents	Physical Assault	27	28	22	45	25	40	34	40	35	40	32	39	34	Figure 9
	Psych Emergency	16	12	10	16	7	19	6	5	7	7	13	15	11	
	Fall	9	22	14	24	23	20	21	25	20	22	9	15	19	
	Injury	30	25	20	40	22	21	26	33	34	25	22	32	28	
Physical Assaults by Severity	High	11	7	3	7	7	10	6	8	3	2	6	8	7	Figure 10
	Medium	9	6	8	18	10	9	17	4	14	7	11	13	11	
	Low	7	15	11	20	8	21	11	28	18	31	15	18	17	
Patient Injury Rate***	0.24	0.48	0.40	0.12	0.64	0.36	0.49	0.00	0.48	0.50	0.47	0.25	0.37	0.39	Figure 11
Patients with Major Injuries***	2	4	3	1	5	3	4	0	4	4	4	2	3		
Total Patients Injured***	13	16	16	31	19	16	21	21	31	23	15	22	20		
Total Staff Injured***	25	12	8	16	7	10	9	19	7	4	11	11	12		Figure 12
Elopement Rate	0.35	0.24	0.53	0.49	0.26	0.24	0.25	0.35	0.12	0.13	0.47	0.25	0.40	0.18	Figure 13
Medication Variance Rate	0.83	0.97	0.66	0.36	0.13	1.09	1.11	0.23	1.08	0.75	1.30	1.37	0.83		Figure 14
Adverse Drug Reaction Rate	0.59	0.36	0.40	0.85	0.77	1.21	1.35	0.70	1.20	0.50	0.71	1.37	0.84		Figure 15
Missing Med-Admin Documentation	0.31%	0.30%	0.33%	0.34%	0.50%	0.29%	0.34%	0.40%	0.27%	0.44%	0.45%	0.36%	0.36%		Figure 16
Percent of Patients Restrained	0.0%	0.0%	0.0%	0.0%	0.0%	0.0%	0.3%	0.6%	0.3%	0.0%	0.0%	0.0%	0.1%	5.3%	Figure 17
Percent of Patients Secluded	1.3%	0.6%	0.7%	1.0%	0.3%	1.3%	0.7%	0.3%	0.0%	0.0%	0.3%	0.7%	0.6%	2.2%	
Restraint Hours Rate	0.000	0.000	0.000	0.000	0.000	0.000	0.005	0.001	0.010	0.000	0.000	0.000	0.001	0.46	Figure 18
Seclusion Hours Rate	0.020	0.016	0.016	0.019	0.004	0.031	0.057	0.005	0.000	0.000	0.038	0.016	0.019	0.41	

* National Public Rate, NASMHPD Research Institute, National Research Institute (NRI), 2012

** Percentage of patients returning within 30 days of discharges that occurred during month

*** Refer to the next page [UI & Medication]

**** As of September 2012, we are temporarily removing the emergency involuntary medication administration data from PRISM because we discovered a technical glitch in Avatar that made this data inaccurate. A fix is under way and this indicator will be reported again as reliable data becomes available.

Performance Related Information for Staff & Managers

3. Unusual Incident & Medication

Data Source: UI DB, ADR DB, and Avatar

Updated as of 12/12/12

Category	Dec-11	Jan-12	Feb-12	Mar-12	Apr-12	May-12	Jun-12	Jul-12	Aug-12	Sep-12	Oct-12	Nov-12	Monthly Average	Total (12mths)	NPR* (Sep-11)
Total Unusual Incidents**	160	180	155	323	186	177	157	165	158	175	159	182	181	2177	
Total Major Unusual Incidents	96	124	100	165	108	120	98	85	68	70	97	121	104	1252	
Patient Involved UI Only**	149	166	145	310	174	163	154	152	151	161	143	175	170	2043	
<i>Patient UI Rate</i>	<i>17.6</i>	<i>20.1</i>	<i>19.1</i>	<i>37.6</i>	<i>22.4</i>	<i>19.7</i>	<i>18.9</i>	<i>17.7</i>	<i>18.1</i>	<i>20.2</i>	<i>17.0</i>	<i>21.8</i>	<i>20.8</i>		
Unique Patients Involved in UI**	95	114	99	128	98	116	105	95	97	108	109	107	106	1271	
Selected Types of Incidents															
Physical Assault	27	28	22	45	25	40	34	40	35	40	32	39	34	407	
Psych Emergency	16	12	10	16	7	19	6	5	7	7	13	15	11	133	
Fall	9	22	14	24	23	20	21	25	20	22	9	15	19	224	
Injury	30	25	20	40	22	21	26	33	34	25	22	32	28	330	
UI by Severity															
Catastrophe	0	0	0	0	0	0	0	0	0	0	0	0	0	0	
High	27	32	25	44	31	29	35	30	16	13	24	26	28	332	
Medium	82	85	81	163	101	67	51	28	40	54	58	63	73	873	
Low	51	63	49	116	54	81	71	107	102	108	77	93	81	972	
Physical Assaults by Severity															
High	11	7	3	7	7	10	6	8	3	2	6	8	7	78	
Medium	9	6	8	18	10	9	17	4	14	7	11	13	11	126	
Low	7	15	11	20	8	21	11	28	18	31	15	18	17	203	
Total Patients Injured***	13	16	16	31	19	16	21	21	31	23	15	22	20	244	
Patients with Major Injuries***	2	4	3	1	5	3	4	0	4	4	4	2	3	36	
<i>Patient Injury Rate***</i>	<i>0.24</i>	<i>0.48</i>	<i>0.40</i>	<i>0.12</i>	<i>0.64</i>	<i>0.36</i>	<i>0.49</i>	<i>0.00</i>	<i>0.48</i>	<i>0.50</i>	<i>0.47</i>	<i>0.25</i>	<i>0.37</i>		<i>0.39</i>
Total Staff Injured**	25	12	8	16	7	10	9	19	7	4	11	11	12		
Total UL Incident Reports	3	2	5	5	2	3	4	3	4	3	3	2	3	39	
Total ULs Documented in Avatar	3	2	4	4	2	2	2	3	1	1	4	2	3		
<i>Elopement Rate</i>	<i>0.35</i>	<i>0.24</i>	<i>0.53</i>	<i>0.49</i>	<i>0.26</i>	<i>0.24</i>	<i>0.25</i>	<i>0.35</i>	<i>0.12</i>	<i>0.13</i>	<i>0.47</i>	<i>0.25</i>	<i>0.40</i>		<i>0.18</i>
Med Variance (MV) Reports**	7	8	5	3	1	9	9	2	9	6	11	11	7	81	
<i>MV Rate</i>	<i>0.83</i>	<i>0.97</i>	<i>0.66</i>	<i>0.36</i>	<i>0.13</i>	<i>1.09</i>	<i>1.11</i>	<i>0.23</i>	<i>1.08</i>	<i>0.75</i>	<i>1.30</i>	<i>1.37</i>	<i>0.83</i>		
Adverse Drug Reactions Reports	5	3	3	7	6	10	11	6	10	4	6	11	7	82	
<i>ADR Rate</i>	<i>0.59</i>	<i>0.36</i>	<i>0.40</i>	<i>0.85</i>	<i>0.77</i>	<i>1.21</i>	<i>1.35</i>	<i>0.70</i>	<i>1.20</i>	<i>0.50</i>	<i>0.71</i>	<i>1.37</i>	<i>0.84</i>		
Total Med Administrations Scheduled	101756	99731	93833	105273	101205	108557	105239	108563	107540	104812	112293	107901		1256703	
Total Missing Documentations	315	304	311	360	511	311	354	433	290	456	505	393		4543	
<i>Percent of Missing Documentation</i>	<i>0.31%</i>	<i>0.30%</i>	<i>0.33%</i>	<i>0.34%</i>	<i>0.50%</i>	<i>0.29%</i>	<i>0.34%</i>	<i>0.40%</i>	<i>0.27%</i>	<i>0.44%</i>	<i>0.45%</i>	<i>0.36%</i>		<i>0.36%</i>	
Total STAT Orders	30	40	53	51	38	81	51	82	38	54	64	61	54		
Total STAT Events****									22	28	35	35	30		
Total Individuals Involved >=1 STAT									14	24	16	21	19		
Total Patients with >=3 STAT Events									3	0	3	2	2		

* National Public Rate, NASMHPD Research Institute, National Research Institute (NRI), 2012

** Numbers may change if any additional UI report is made after the data run date from UI database (around the 15th of the following month).

*** Injury is broadly defined to include any type of injuries regardless of the cause or severity level. The total number of patients injured represents all of the reported injuries including minor injuries treated with first aid alone. However, the patient injury rate considers only the number of patient injuries that required beyond first-aid level treatment based on the NRI definition and the patient injury rate is the number of 'major' patient injuries per every 1000 inpatient days

**** One STAT event may involve more than one STAT order for the same patient. Any orders placed within 15 minute timeframe are considered to belong to one STAT event.

Performance Related Information for Staff & Managers

4. Restraint & Seclusion

Data Source: Restraint/Seclusion Log and UI DB (for # of total events and patients) and Avatar (for patient days/hours)

Updated as of 12/12/12

Category	Dec-11	Jan-12	Feb-12	Mar-12	Apr-12	May-12	Jun-12	Jul-12	Aug-12	Sep-12	Oct-12	Nov-12	Monthly Average	Total (12mths)	NPR* (Sep-11)
Number of Restraint Events	0	0	0	0	0	0	1	2	1	0	0	0	0.3	4	
Number of Unique Patients Restrained	0	0	0	0	0	0	1	2	1	0	0	0	0.3		
Percentage of Patients Restrained	0.0%	0.0%	0.0%	0.0%	0.0%	0.0%	0.3%	0.6%	0.3%	0.0%	0.0%	0.0%	0.1%		5.3%
Total Restraint Hours (h:mm)	0:00	0:00	0:00	0:00	0:00	0:00	1:00	0:13	2:00	0:00	0:00	0:00	0:16	3:13	
Restraint Hours Rate	0.000	0.000	0.000	0.000	0.000	0.000	0.005	0.001	0.010	0.000	0.000	0.000	0.001		0.46
Number of Seclusion Events	5	2	2	3	1	6	3	1	0	0	5	2	2.5	30	
Number of Unique Patients Secluded	4	2	2	3	1	4	2	1	0	0	1	2	1.8		
Percentage of Patients Secluded	1.3%	0.6%	0.7%	1.0%	0.3%	1.3%	0.7%	0.3%	0.0%	0.0%	0.3%	0.7%	0.6%		2.2%
Total Seclusion Hours (h:mm)	4:10	3:13	3:00	3:50	0:45	6:08	11:10	1:00	0:00	0:00	7:40	3:10	3:40	44:06	
Seclusion Hours Rate	0.020	0.016	0.016	0.019	0.004	0.031	0.057	0.005	0.000	0.000	0.038	0.016	0.019		0.41

* National Public Rate, NASMHPD Research Institute, National Research Institute (NRI), 2012

Performance Related Information for Staff & Managers

5. Major Incidents by Incident Location/Unit

Data Source: UI DB

Updated as of 12/12/12

Category		Dec-11	Jan-12	Feb-12	Mar-12	Apr-12	May-12	Jun-12	Jul-12	Aug-12	Sep-12	Oct-12	Nov-12	Monthly Average	Total (12mths)	Percent	
Total Unusual Incidents		160	180	155	323	186	177	157	165	158	175	159	182	181	2177		
Total Major Incidents*		96	124	100	165	108	120	98	85	68	70	97	121	104	1252	100%	
Major Incident Location	1A	11	13	11	17	10	17	12	4	8	2	11	4	10	120	10%	
	1B	8	14	12	17	9	7	10	5	6	6	10	13	10	117	9%	
	1C	6	8	3	15	11	12	5	8	6	5	8	9	8	96	8%	
	1D	11	9	6	5	6	11	8	9	2	6	2	13	7	88	7%	
	1E	8	8	7	14	15	11	18	10	9	7	15	8	11	130	10%	
	1F	10	5	10	11	7	14	11	17	4	2	7	17	10	115	9%	
	1G	7	11	8	10	21	7	8	9	8	19	12	20	12	140	11%	
	2A	3	3	4	7	3	2	0	3	1	4	2	3	3	35	3%	
	2B	1	3	2	1	2	1	1	1	1	3	0	1	7	2	23	2%
	2C	7	8	6	18	4	12	5	2	2	3	9	4	7	80	6%	
	2D	6	12	8	18	5	7	10	9	7	3	6	8	8	99	8%	
	TLC	9	12	14	21	6	11	4	6	8	4	6	4	9	105	8%	
	Other	9	18	9	11	9	8	6	2	4	9	8	11	9	104	8%	
Total Physical Assault Incidents		27	28	22	45	25	40	34	40	35	40	32	39	34	407	100%	
Assault Incident Location	1A	4	1	0	1	0	7	4	2	4	4	5	1	3	33	8%	
	1B	1	1	0	4	0	1	0	3	3	4	1	0	2	18	4%	
	1C	1	4	0	3	3	0	1	2	1	1	2	4	2	22	5%	
	1D	6	4	4	2	2	4	3	4	2	3	1	9	4	44	11%	
	1E	3	0	5	7	5	5	7	8	5	3	4	2	5	54	13%	
	1F	2	0	1	1	2	10	4	10	2	2	5	7	4	46	11%	
	1G	5	4	4	3	4	2	4	4	6	15	4	6	5	61	15%	
	2A	0	0	1	3	0	0	0	0	0	0	0	0	0	4	1%	
	2B	0	0	0	0	0	0	0	1	1	0	0	2	0	4	1%	
	2C	0	2	0	3	2	2	3	1	1	0	2	0	1	16	4%	
	2D	1	7	4	10	3	4	8	2	7	3	5	5	5	59	14%	
	TLC	3	3	3	8	3	3	0	2	3	5	2	2	3	37	9%	
	Other	1	2	0	0	1	2	0	1	0	0	1	1	1	9	2%	

Performance Related Information for Staff & Managers

5. Major Incidents by Incident Location/Unit

Data Source: UI DB

Updated as of 12/12/12

Category		Dec-11	Jan-12	Feb-12	Mar-12	Apr-12	May-12	Jun-12	Jul-12	Aug-12	Sep-12	Oct-12	Nov-12	Monthly Average	Total (12mths)	Percent	
Total Fall Incidents		9	22	14	24	23	20	21	25	20	22	9	15	19	224	100%	
Fall Incident Location	1A	1	6	3	11	6	8	9	3	4	3	1	3	5	58	26%	
	1B	2	1	3	0	3	1	4	2	5	3	2	4	3	30	13%	
	1C	0	1	1	2	1	0	0	3	1	0	1	1	1	11	5%	
	1D	0	1	0	0	1	0	0	0	4	0	0	1	1	8	4%	
	1E	0	2	1	1	4	3	5	3	1	2	0	1	2	23	10%	
	1F	0	0	0	1	0	0	0	0	0	0	0	0	1	2	1%	
	1G	0	0	0	0	1	1	0	2	3	8	1	1	1	17	8%	
	2A	0	1	0	0	0	0	0	1	0	0	0	0	2	4	2%	
	2B	1	2	1	1	1	0	0	0	1	1	1	0	0	1	8	4%
	2C	0	2	0	3	1	3	0	0	0	0	2	1	0	1	12	5%
	2D	1	1	0	3	0	0	2	6	3	1	0	0	0	1	17	8%
	TLC	2	0	4	0	1	3	1	0	2	0	0	0	1	1	14	6%
	Other	2	5	1	2	4	1	0	1	0	0	2	2	0	2	20	9%
Total Injury Incidents		30	25	20	40	22	21	26	33	34	25	22	32	28	330	100%	
Injury Incident Location	1A	3	2	3	2	1	3	5	1	4	2	4	0	3	30	9%	
	1B	0	2	0	4	2	1	2	4	3	1	2	3	2	24	7%	
	1C	1	2	0	2	1	0	0	3	1	0	2	2	1	14	4%	
	1D	5	2	3	2	3	3	3	6	1	0	1	6	3	35	11%	
	1E	4	1	2	5	2	2	3	2	4	3	2	1	3	31	9%	
	1F	4	4	1	1	2	4	2	4	1	1	2	8	3	34	10%	
	1G	3	1	5	2	6	1	3	2	5	9	3	4	4	44	13%	
	2A	0	0	0	2	0	0	0	0	0	0	0	0	1	3	1%	
	2B	0	1	0	1	0	0	0	0	0	1	0	0	0	3	1%	
	2C	1	1	1	3	1	0	1	4	1	2	1	3	2	19	6%	
	2D	1	2	0	7	0	3	5	4	7	2	1	2	3	34	10%	
	TLC	2	0	4	5	1	2	0	2	5	2	2	2	2	27	8%	
	Other	6	7	1	4	3	2	2	2	1	1	3	2	0	3	32	10%

* Not every incident is a major incident. This counts only those incidents that were classified to be major based on the policy.

Performance Related Information for Staff & Managers

6. Demographic Information of Individuals in Care

Data Source: Avatar

Updated as of 12/12/12

Category	Sub-group	Dec-11	Jan-12	Feb-12	Mar-12	Apr-12	May-12	Jun-12	Jul-12	Aug-12	Sep-12	Oct-12	Nov-12	Monthly Average	Percent*
Total Active (on Roll) at End of Month*		283	264	271	270	265	273	282	283	270	279	275	272	274	
Gender	Female	63	60	68	71	66	71	73	70	64	71	74	72	69	25.0%
	Male	220	204	203	199	199	202	209	213	206	208	201	200	205	75.0%
Age	Median Age (Years)	54 yrs	55 yrs	55 yrs	55 yrs	55 yrs	55 yrs	55 yrs	55 yrs	55 yrs	55 yrs	55 yrs	55 yrs	55 yrs	
	<30 years old	20	13	14	20	17	20	23	23	22	25	23	23	20	7.4%
	>=30 and <40 years old	28	29	33	33	28	36	37	33	29	28	27	27	31	11.2%
	>=40 and <50 years old	51	45	46	42	41	42	45	46	43	43	45	37	44	16.0%
	>=50 and <60 years old	102	95	96	96	99	93	92	94	89	91	88	97	94	34.4%
	>=60 years old	81	82	82	79	80	82	85	87	87	87	92	92	88	85
Legal Status of Individuals on Roll at End of Month	Emergency	19	19	25	19	16	17	20	21	16	22	21	19	20	7.1%
	Inpatient Commitment	27	27	27	27	25	25	26	27	26	24	23	23	26	9.3%
	Outpatient Commitment	27	22	22	25	29	28	25	20	20	21	23	21	24	8.6%
	Voluntary	39	42	41	42	41	42	41	43	42	43	46	50	43	15.6%
	Civil Sub-total	112	110	115	113	111	112	112	111	104	110	113	113	111	40.6%
	DC Exam	63	49	50	50	45	49	57	59	56	59	55	50	54	19.5%
	Mentally Incompetent	2	3	2	4	6	7	8	8	6	5	3	3	5	1.7%
	NGBRI - DC	91	88	89	89	89	89	91	92	91	92	91	93	90	33.0%
	NGBRI - US	10	10	11	10	10	10	10	9	9	9	9	9	10	3.5%
	NGBRI - VI	1	1	1	1	1	1	1	1	1	1	1	1	1	0.4%
Dual Commitment	1	1	1	1	1	3	1	1	1	1	1	1	1	0.4%	
Sexual Psychopath (Miller Ac	3	2	2	2	2	2	2	2	2	2	2	2	2	0.8%	
Forensic Sub-total	171	154	156	157	154	161	170	172	166	169	162	159	163	59.4%	
Length of Stay	Median LOS (Days)	876 d	977 d	950 d	974 d	1042 d	1004 d	922 d	890 d	1063 d	946 d	1027 d	1010 d	973 d	
	Average LOS (Days)	2977 d	3150 d	3089 d	3088 d	3153 d	3047 d	2971 d	2976 d	3116 d	3030 d	3093 d	3103 d	3066 d	
	<30 Days	33	27	32	32	26	30	32	32	20	32	27	32	30	10.8%
	>=30 ~ <365 Days	79	68	69	66	65	68	76	74	77	74	74	69	72	26.1%
	>= 1 Year & < 2 Years	20	22	21	23	22	24	21	23	20	21	22	21	22	7.9%
	>= 2 Years & < 5 Years	42	39	40	41	44	44	46	47	46	46	43	43	43	15.9%
	>= 5 Years & < 20 Years	63	63	64	63	62	62	62	62	61	60	62	61	62	22.7%
>= 20 Years	46	45	45	45	46	45	45	45	46	46	47	46	46	16.6%	

* Counts the total number of individuals who are on the hospital roll at end of each month. This number serves as denominator to calculate percentage of each group.