



**Government of the District of Columbia
Department of Behavioral Health (DBH)**



PRISM

Performance Related Information for Staff and Managers



OCTOBER 2015

Office of Statistics and Reporting (OSR), 11/20/15

Table of Contents

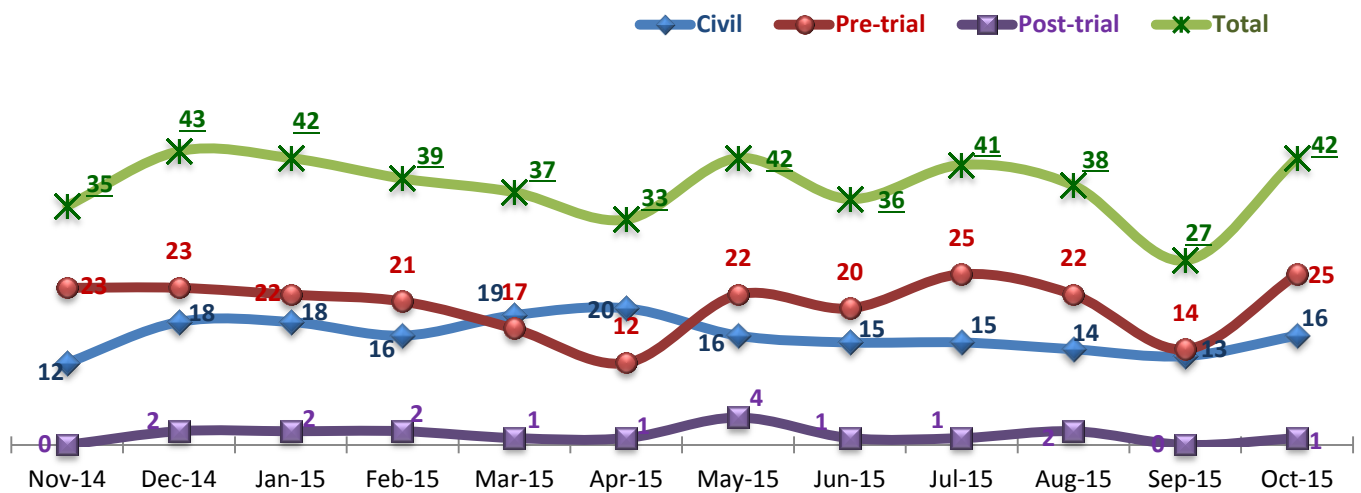
1. Admissions to SEH	1
2. Discharges from SEH	1
3. Average Daily Census.....	2
4. Transfers.....	2
5. 30-Day Readmission Rate	2
6. Unusual Incidents	3
7. Patient-Involved Unusual Incidents	3
8. Admissions vs. Patient UI Rate	4
9. Unusual Incidents by Severity.....	4
10. Selected Types of Incidents	4
11. Physical Assaults by Severity	5
12. Patient Injuries	5
13. Staff Injuries	5
14. Patient and Staff Falls.....	6
15. Percent of Patients Restrained or Secluded	6
16. Restraint Hours Rate & Seclusion Hours Rate	6
17. Elopements.....	7
18. Reported Medication Variance Events.....	7
19. Reported Adverse Drug Reactions	8
20. Percent of Missing Documentation on Med-Administration.....	8
21. Medication Refusal Rate*.....	8
22. Number of STAT Events and Individuals Involved	9
23. Percentage of SiteFM Work Orders Completed within 3 Days	9
24. Demographics.....	10
25. Length of Stay.....	11

- Appendix 1) Table – Census, Admissions & Discharges
- Appendix 2) Table – Key Performance Indicators
- Appendix 3) Table – Unusual Incident & Medication
- Appendix 4) Table – Restraint & Seclusion
- Appendix 5) Table – Demographic Information of Individuals in Care
- Appendix 6) Table – Unusual Incidents by Unit

Key Trends: Admission, Discharge, Transfer, Census, and Readmissions (1~6)

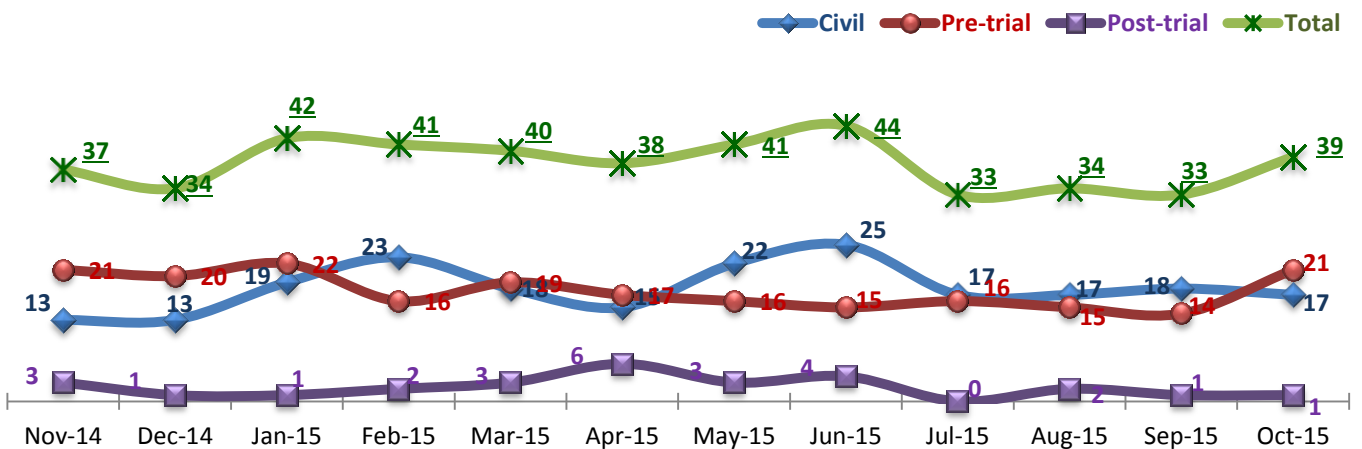
- The number of admissions in October 2015 (42) was the most since May 2015, primarily from a significant increase of pre-trial admissions. The number of discharges in October (39) also increased from September (33) but is lower than the number of admissions, contributing to an increase of the average daily census (ADC) for the month of October.
- In October 2015, the number of emergency medical transfers remained low at below 10 but the frequency of inter-unit transfers noticeably increased due in part to an increase of admissions and a high census that triggered frequent reassignments of beds and units to accommodate new admissions.
- The 30-day readmission rate has remained just below the national average (NPR at 6.9%)¹ since May 2015, but a majority of 30-day readmissions in FY15 (71% or 20 of 28) are those discharged in a civil legal status, including all of the six (6) individuals readmitted within 30 days since May 2015. This is in contrast to the trend in FY14, when only 30% of 30-day readmissions were from *Civil* discharges.

1. Admissions to SEH



* Number of admissions to SEH inpatient program, including transfers from forensic outpatient to inpatient program.

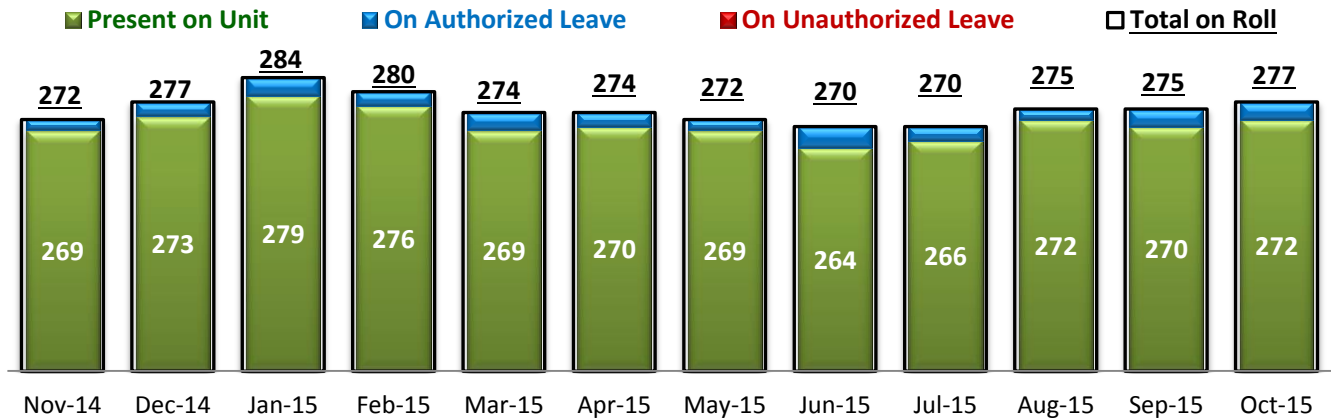
2. Discharges from SEH



* Number of discharges from SEH inpatient program, including transfers from inpatient to forensic outpatient program.

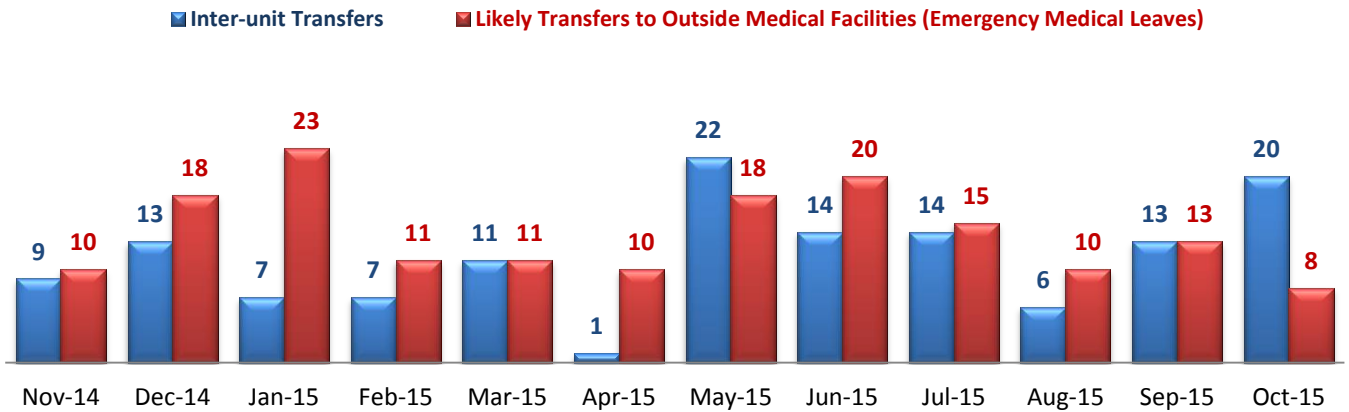
¹ NPR: National Public Rate as of June 2013 was published in November 2013 by National Association of State Mental Health Program Directors Research Institute (NRI), based on data collected from a number of state psychiatric hospitals nationwide.

3. Average Daily Census



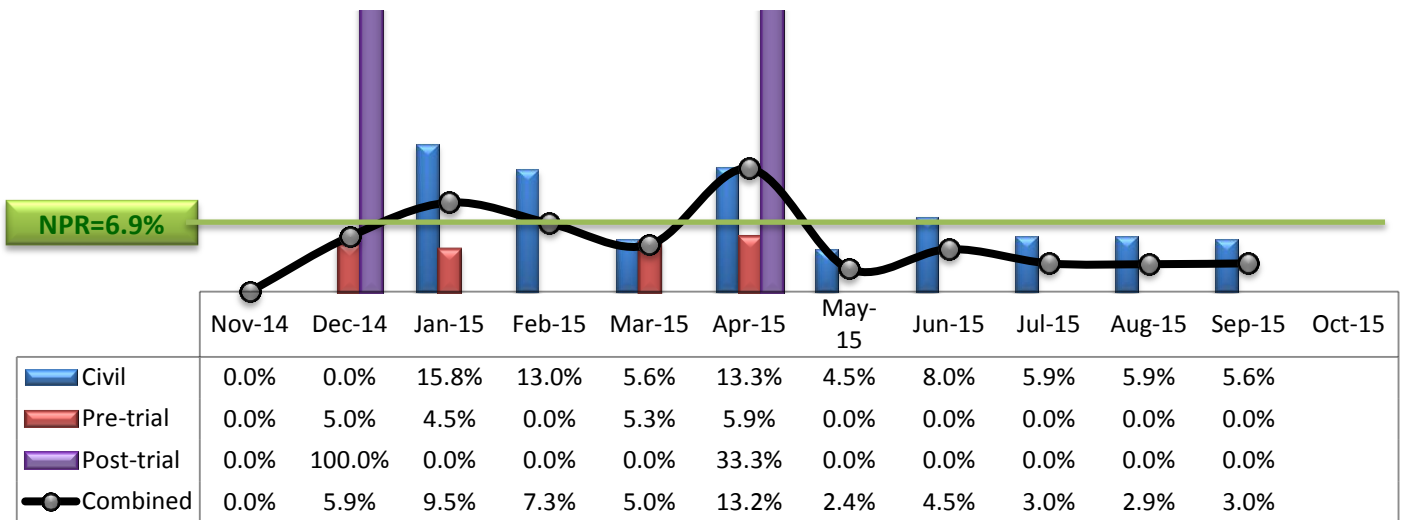
* Data above is the daily average number of individuals counted at 11:59 PM every day during each month.

4. Transfers



* Number of inter-unit transfers that occurred during month and number of emergency medical leaves that were initiated during month.

5. 30-Day Readmission Rate



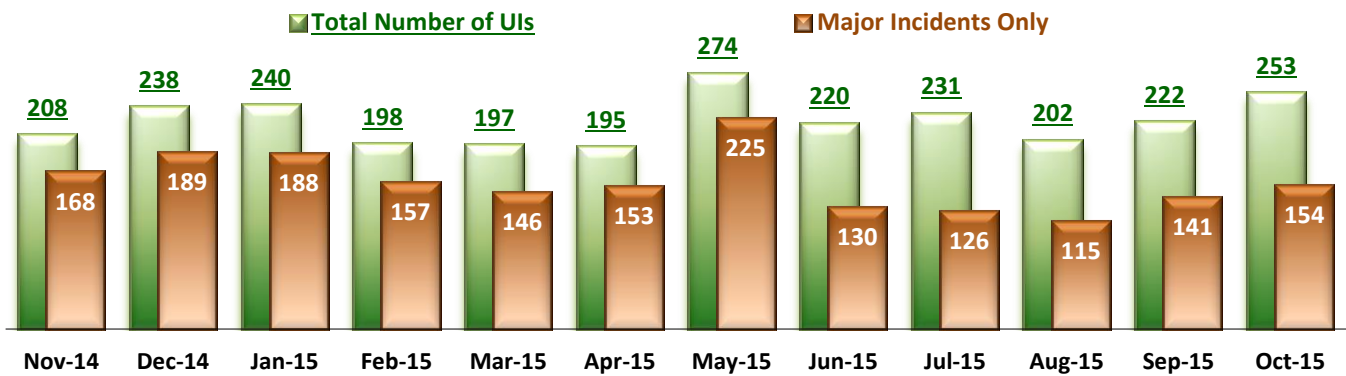
* Percent of discharges that returned to SEH within 30 days of discharges. It does not include those who may have been re-hospitalized at another psychiatric facility. This measure requires 30-day observation following discharge.

** The post-trial denominators (discharges) per month range only between one and six, making the monthly re-admission rate high when there is any. For example, in December 2014, there was only one post-trial discharge, which was readmitted within 30 days. Thus, the 30-day readmission rate for post-trial discharge for this month is 100%.

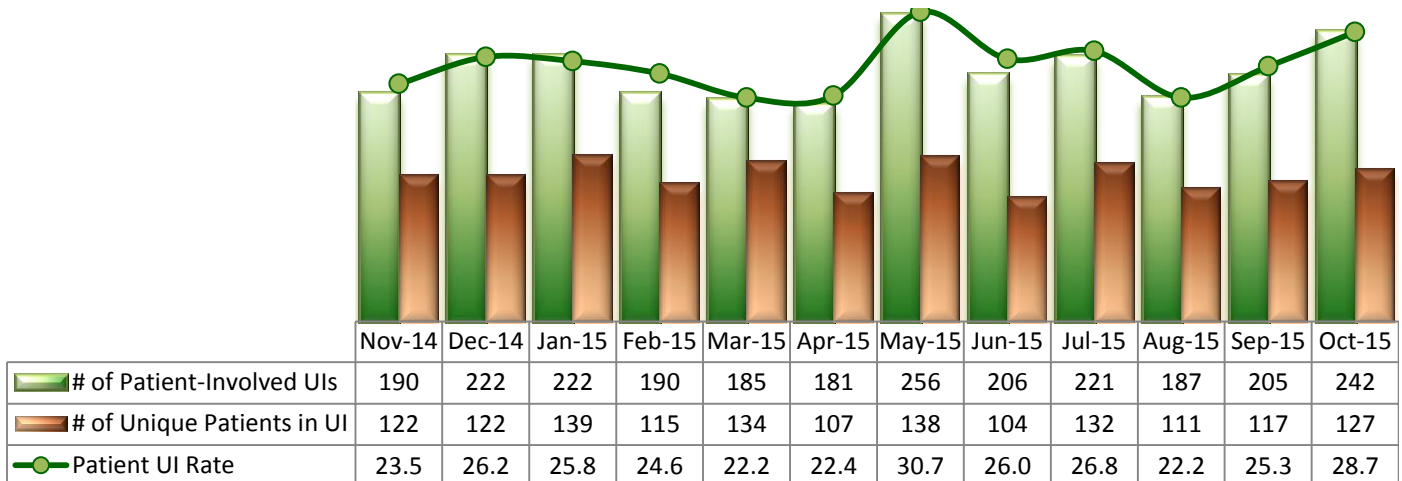
Key Trends: Unusual Incidents (6~17)

- The trend in the number of unusual incidents (UIs), particularly violence related incidents, consistently mirrored the trend in the number of admissions in FY15: when the number of admissions increased, so did the number of UIs. When the number of admissions decreased, so did the number of UIs. That is because individuals admitted recently are more likely to engage in aggressive acts while adjusting to a new environment and their new medication regimens, as suggested in previous studies. The month of September 2015 was exceptional showing an increase of UIs while admissions decreased. In October 2015, however, a considerable increase of patient UIs, particularly violence related UIs, followed the increase of admissions: the total number of UIs (253) and the patient UI rate (25.3 per 1000 patient days) in October reached the highest level since May 2015.
- In October 2015, the number of incidents involving aggressive behaviors with non-physical contact (102) reached its highest level ever since aggressive behaviors were officially reported and monitored at the Hospital. Additionally, 74 physical assaults were reported and these two types of violence incidents made up 73% of all patient UIs. Also, high severity assaults noticeably increased. Accordingly, injury incidents triggered from violence (33) increased and so did the use of restraint and seclusion. Both the restraint & seclusion hours rates and the percentage of unique individuals restrained or secluded increased in October although the restraint & seclusion hours rates (0.08 and 2.08 per 1000 patient hours, respectively) are still far below the national average (0.71 and 44, respectively).
- The patient fall rate in October (2.84 per 1000 patient days) marginally increased from the previous month but remained below the average patient fall rate in FY15 (3.2).
- There have been no elopements since August 2015. Its elopement rate in FY15 (0.03 per 1000 patient days) is far below the national average (0.13).

6. Unusual Incidents

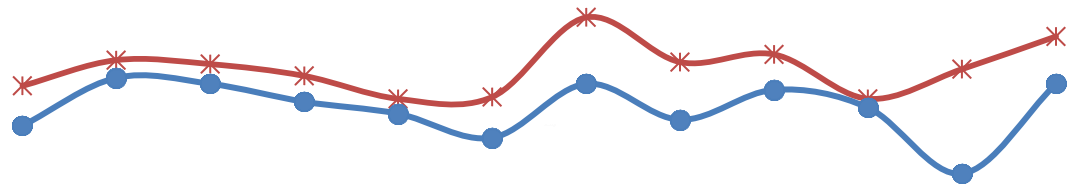


7. Patient-Involved Unusual Incidents



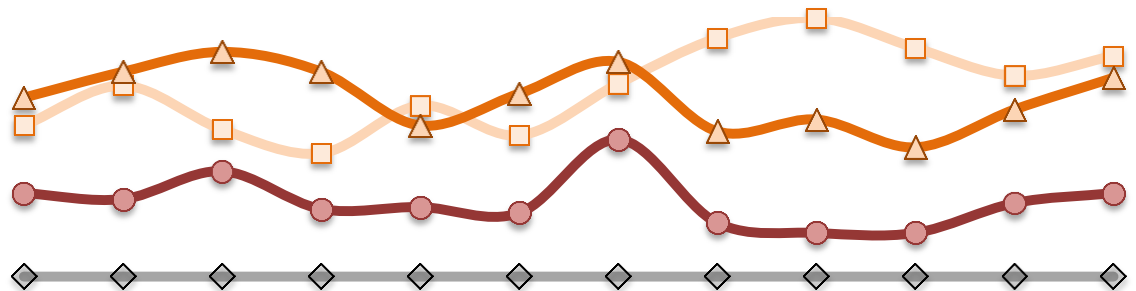
* The patient UI rate is the number of patient-involved unusual incidents reported for every 1000 inpatient days.

8. Admissions vs. Patient UI Rate



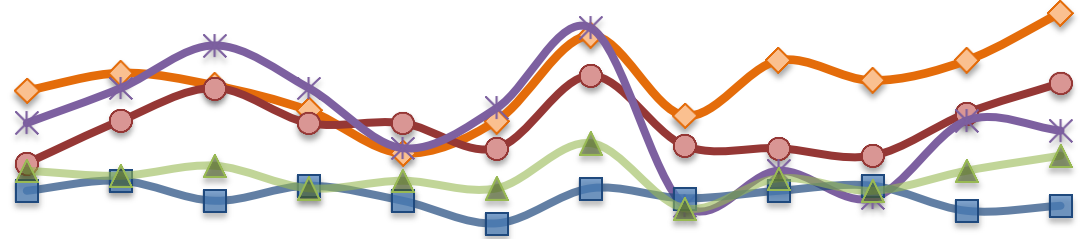
	Nov-14	Dec-14	Jan-15	Feb-15	Mar-15	Apr-15	May-15	Jun-15	Jul-15	Aug-15	Sep-15	Oct-15
—*— Patient UI Rate	23.5	26.2	25.8	24.6	22.2	22.4	30.7	26.0	26.8	22.2	25.3	28.7
—●— Admission	35	43	42	39	37	33	42	36	41	38	27	42

9. Unusual Incidents by Severity



	Nov-14	Dec-14	Jan-15	Feb-15	Mar-15	Apr-15	May-15	Jun-15	Jul-15	Aug-15	Sep-15	Oct-15
□ 1) Low	76	96	74	62	86	71	97	120	130	115	101	111
△ 2) Medium	90	103	113	103	76	92	108	73	79	65	84	100
● 3) High	42	39	53	34	35	32	69	27	22	22	37	42
◇ 4) Catstrp	0	0	0	0	0	0	0	0	0	0	0	0
Total UI	208	238	240	198	197	195	274	220	231	202	222	253

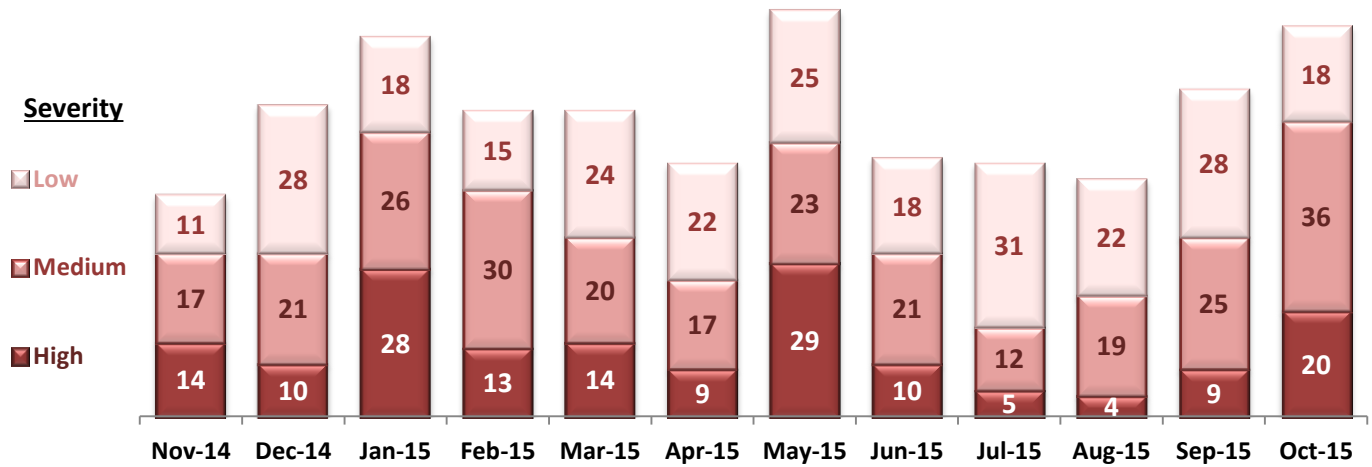
10. Selected Types of Incidents



	Nov-14	Dec-14	Jan-15	Feb-15	Mar-15	Apr-15	May-15	Jun-15	Jul-15	Aug-15	Sep-15	Oct-15
◆ Aggressive Behavior	71	78	73	63	46	59	93	61	83	75	83	102
● Physical Assault	42	59	72	58	58	48	77	49	48	45	62	74
* Pysch Emerg.	58	72	89	72	48	64	96	25	39	28	59	55
■ Fall	31	35	27	33	27	18	32	28	31	33	23	25
▲ Injury	39	37	41	32	35	32	50	24	36	31	39	45

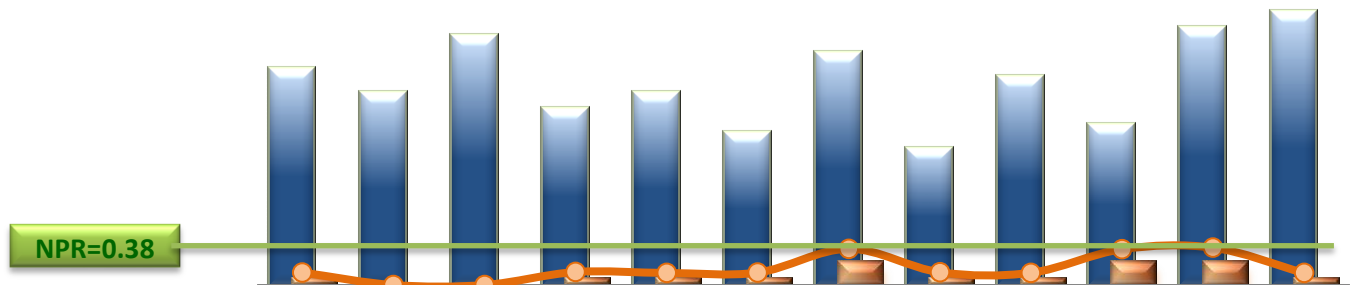
* These are incident types that are frequently reported. Some incidents may be counted in multiple categories. For example, a physical assault incident that accompanied psychiatric emergency and injury is counted under psychiatric emergency and injury as well as under physical assault. Injury is broadly defined to include any type of injuries regardless of the cause or severity level.

11. Physical Assaults by Severity



* Any physical assault that accompanies a code 13 or results in extensive injury needing off-unit treatment or transfer to ER is considered to be high severity, any physical assault that causes a minor injury that can be treated on unit is considered to be medium severity, and physical assault events that result in no injury are considered to be low severity.

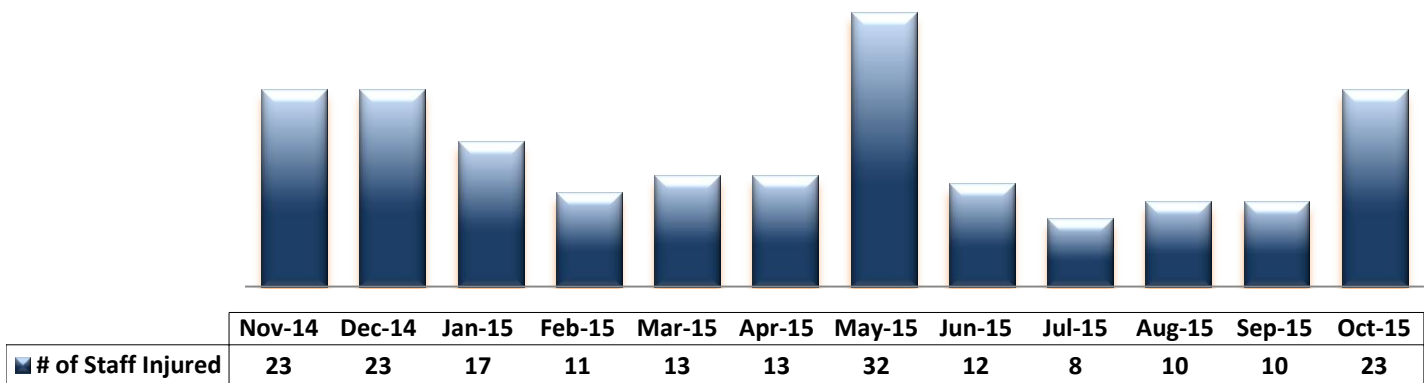
12. Patient Injuries



	Nov-14	Dec-14	Jan-15	Feb-15	Mar-15	Apr-15	May-15	Jun-15	Jul-15	Aug-15	Sep-15	Oct-15
Total Pts Injured	27	24	31	22	24	19	29	17	26	20	32	34
Major Pt Injuries*	1	0	0	1	1	1	3	1	1	3	3	1
Patient Injury Rate	0.12	0.00	0.00	0.13	0.12	0.12	0.36	0.13	0.12	0.36	0.37	0.12

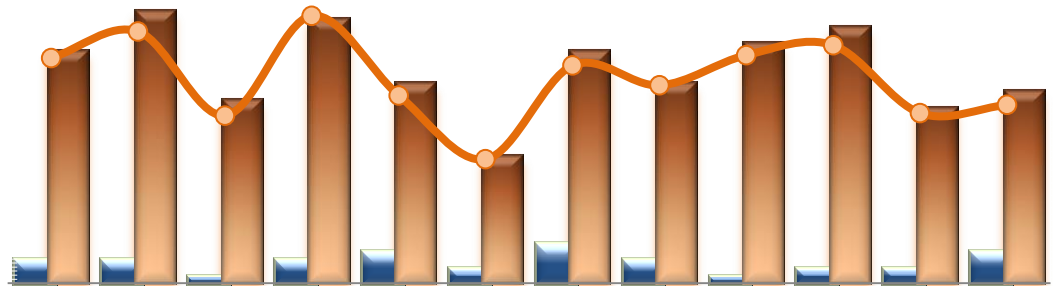
* Injury is broadly defined to include any type of injuries regardless of the cause or severity level. The total number of patients injured represents all of the reported injuries including minor injuries treated with first aid alone. However, the patient injury rate considers only the number of patient injuries that required beyond first-aid level treatment based on the NRI definition and the patient injury rate is the number of 'major' patient injuries per every 1000 inpatient days

13. Staff Injuries



* Injury is broadly defined to include any type of injuries regardless of the cause or severity level. The total number of staff injured represents all of the reported staff injuries including minor injuries treated with first aid alone.

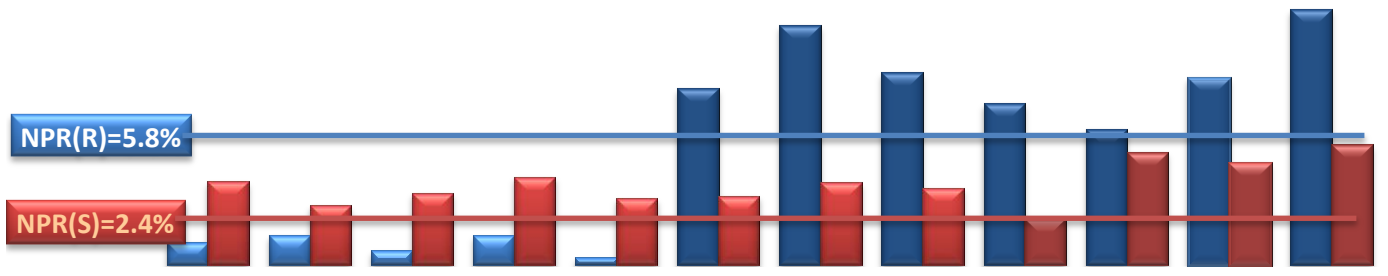
14. Patient and Staff Falls



	Nov-14	Dec-14	Jan-15	Feb-15	Mar-15	Apr-15	May-15	Jun-15	Jul-15	Aug-15	Sep-15	Oct-15
Total Staff who Fell	3	3	1	3	4	2	5	3	1	2	2	4
Total Patients who Fell	29	34	23	33	25	16	29	25	30	32	22	24
Patient Fall Rate	3.59	4.01	2.67	4.26	2.99	1.98	3.47	3.15	3.64	3.79	2.71	2.84

* The patient fall rate is the number of patient falls per every 1000 inpatient days.

15. Percent of Patients Restrained or Secluded



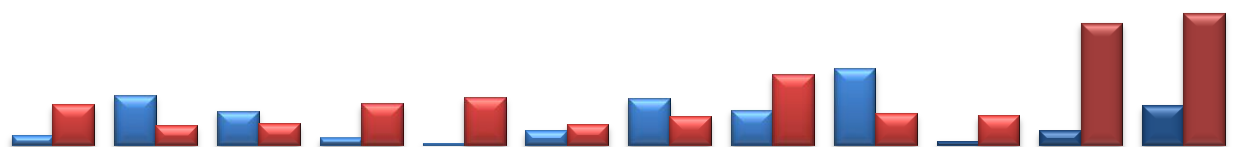
	Nov-14	Dec-14	Jan-15	Feb-15	Mar-15	Apr-15	May-15	Jun-15	Jul-15	Aug-15	Sep-15	Oct-15
Restraint	1.0%	1.3%	0.6%	1.3%	0.3%	7.5%	10.2%	8.2%	6.9%	5.8%	7.9%	10.9%
Seclusion	3.5%	2.5%	3.1%	3.8%	2.8%	2.9%	3.5%	3.3%	2.0%	4.8%	4.3%	5.1%

* Percent of unique patients who were restrained at least once and percent of unique patients who were secluded at least once. The denominator includes all individuals who were served in care >=1 day during month.

** Data prior to April 2015, the Hospital tracked only mechanical restraint events, but the Hospital's restraint policy has changed to include any physical holds. The sudden increase of the restraint data as of April 2015 reflects this change.

*** The previous PIRSM reports presented incorrect data for some months in the indicators 15 above and 16 below, and data herein has been updated to reflect the correct numbers.

16. Restraint Hours Rate & Seclusion Hours Rate

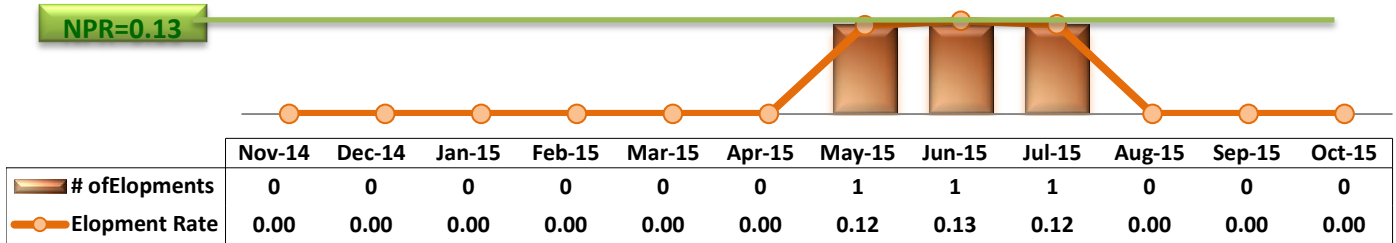


	Nov-14	Dec-14	Jan-15	Feb-15	Mar-15	Apr-15	May-15	Jun-15	Jul-15	Aug-15	Sep-15	Oct-15
Restraint	0.021	0.105	0.072	0.015	0.004	0.031	0.098	0.074	0.163	0.008	0.031	0.084
Seclusion	0.086	0.041	0.045	0.088	0.101	0.043	0.060	0.150	0.067	0.062	0.260	0.281

* Restraint/Seclusion Hours Rate: Number of hours spent in restraint/seclusion for every 1000 inpatient hours.

** The duration of each physical hold event is counted as 1 minute as a physical hold is ordered and used only as a temporary intervention that lasts less than a minute to break up any physical conflicts or to administer emergency medications.

17. Elopements

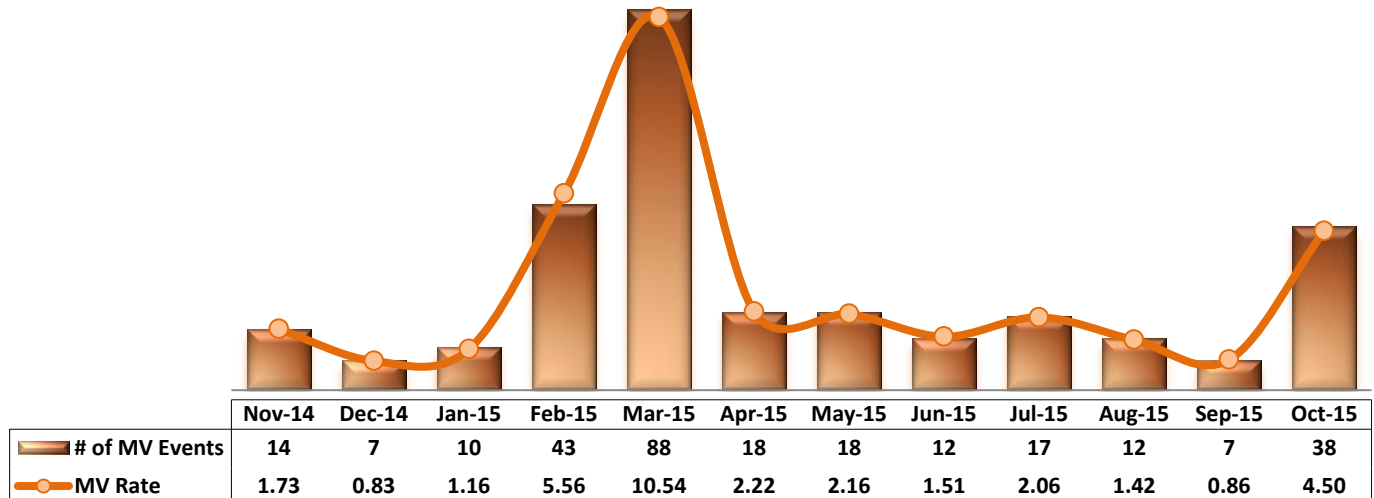


* It counts the total number of unauthorized leaves for any duration that were initiated during month and were recorded in Avatar. The elopement rate is the number of those unauthorized leaves that occurred for every 1000 inpatient days.

Key Trends: Medication Documentation, Medication Variance, ADR, and STAT (18~22)

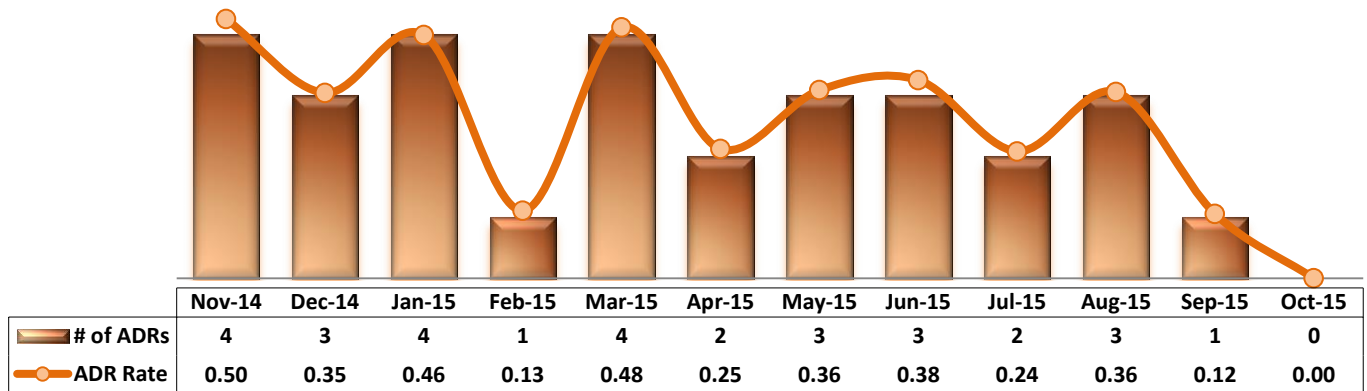
- The number of reported MVs ranged between 12 and 18 per month since April 2015 and dropped to 7 in September 2015, but the number increased significantly in October (38). This increase is primarily attributed to a large number of inventory discrepancies (between the log and actual medications) in Pyxis discovered through the pharmacy's audit.
- The number of reported ADRs ranged between one (1) and four (4) per month in FY15 and none was reported in October 2015.
- The rate of missing documentation on medication administration increased marginally, remaining at below 5% in October 2015.
- The medication refusal rate remained at around 6% for 4 months since June through September 2015 but increased to nearly 7% in October 2015, which may also reflect the increase of admissions and violence.
- During the month of October 2015, both the number of STAT events (119 or 4 per day) and the number of unique individuals involved in one or more STAT events (49, which is 16% of all IICs served at least one day during month) reached the highest level since the Hospital monitored this data through PRISM first time in August 2012.

18. Reported Medication Variance Events



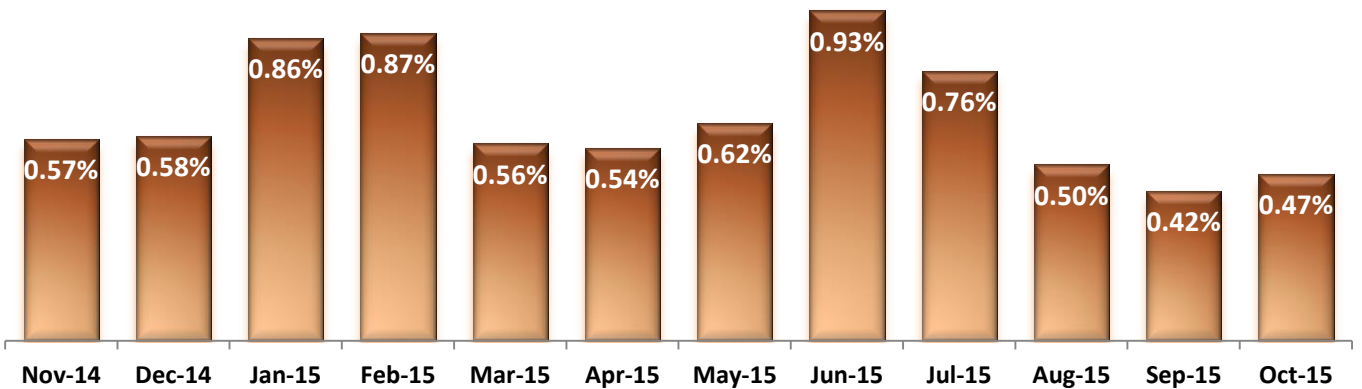
* MV Rate: Number of reported medication variance events that occurred for every 1000 inpatient days.

19. Reported Adverse Drug Reactions

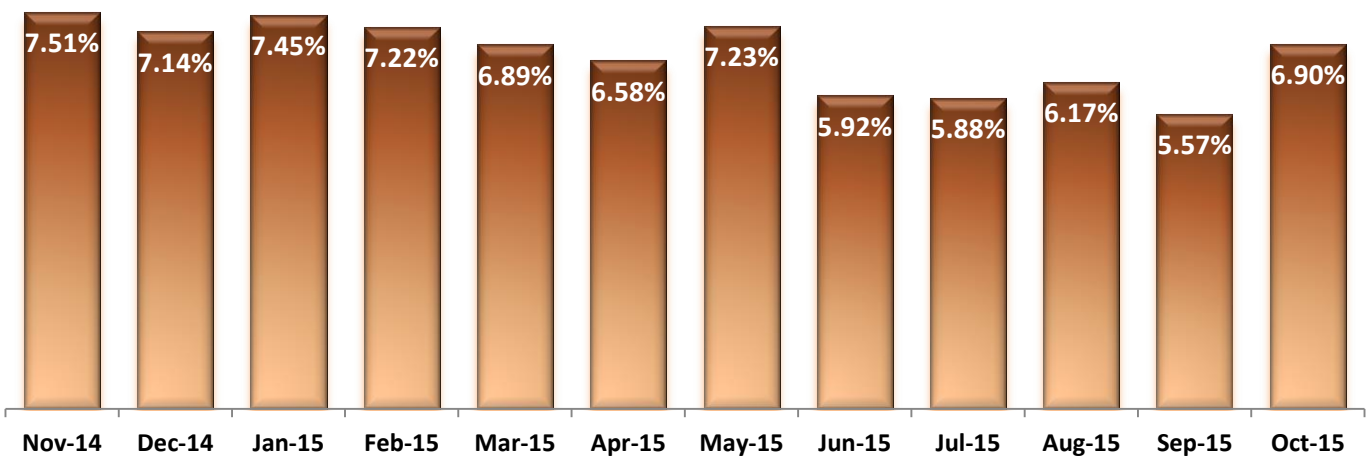


* ADR Rate: Number of reported adverse drug reaction events that occurred for every 1000 inpatient days.

20. Percent of Missing Documentation on Med-Administration

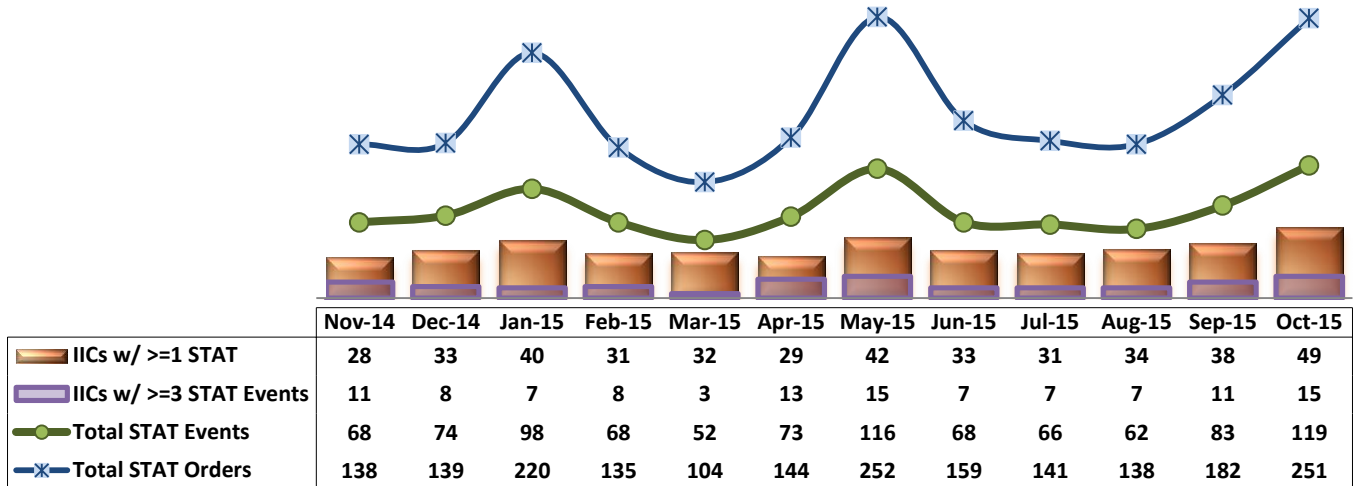


21. Medication Refusal Rate*



* Medication Refusal Rate: the number of refused medication doses divided by the total number of doses scheduled for administration.

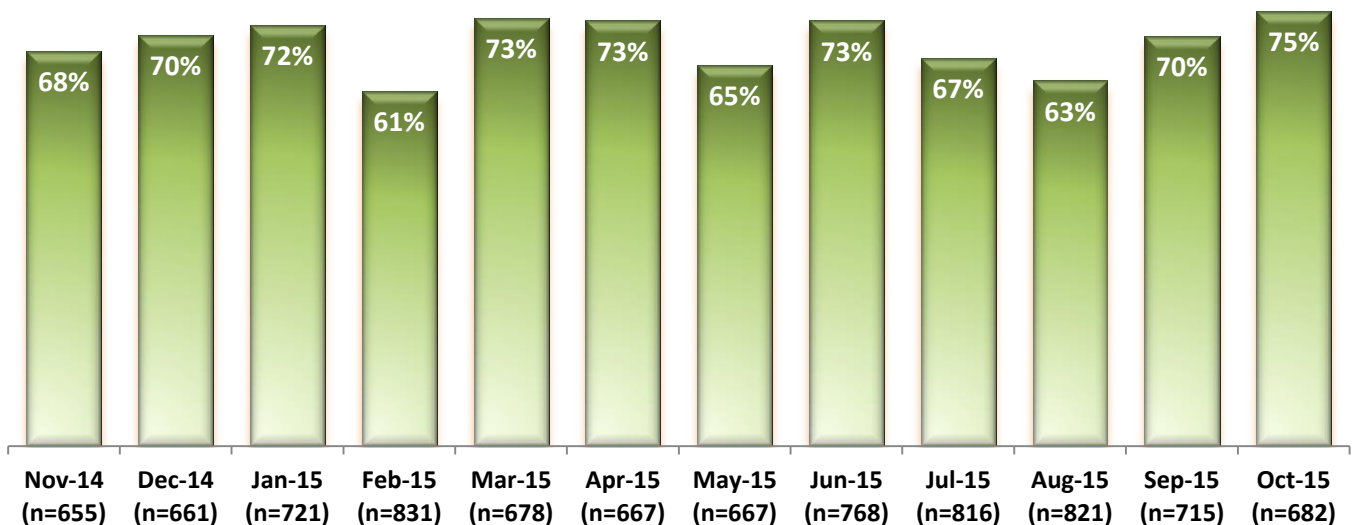
22. Number of STAT Events and Individuals Involved



Key Trends: Environment of Care (23)

- During FY2015, on average, the Hospital received a total of 735 work orders per month (or 24 per day) through SiteFM. Of those, 68% were completed within 3 days.
- In the month October 2015, the Hospital received a total of 682 SiteFM work orders, which is a continued noticeable decrease from the level of work orders received in the previous four months.
- The 3-day completion rate of SiteFM work orders in October 2015 is 75%, which is higher than the average in FY15 as well as the highest rate since March 2014.

23. Percentage of SiteFM Work Orders Completed within 3 Days



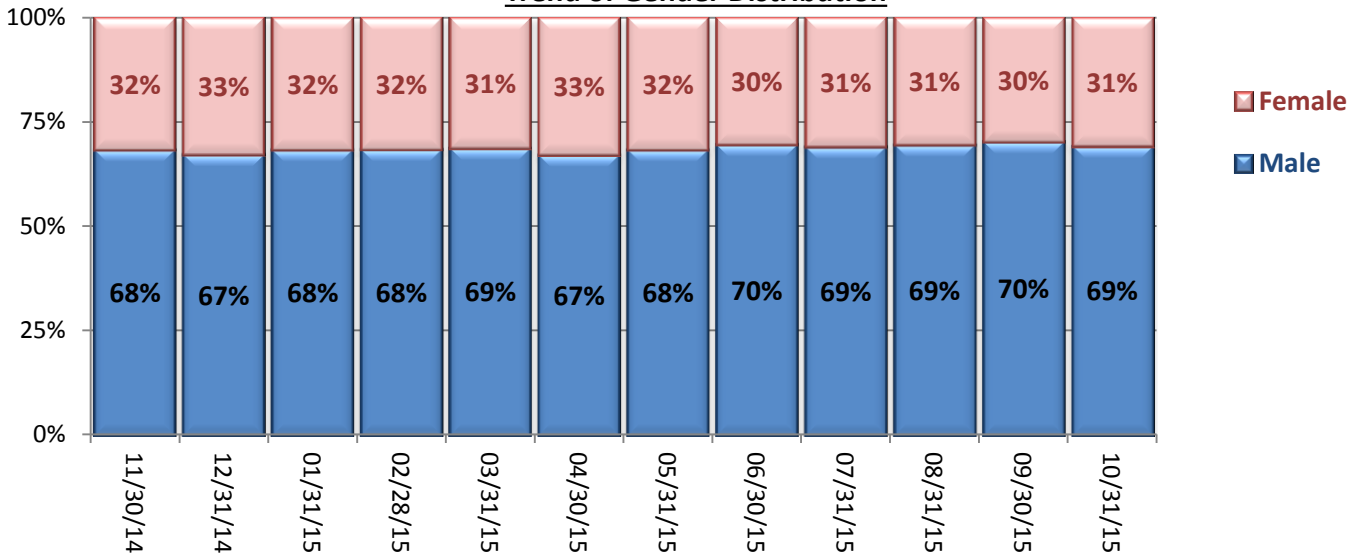
* This data was analyzed and included in PRISM for the first time in December 2014.

Key Trends: Demographics, Legal Status, and Length of Stay (24-25)

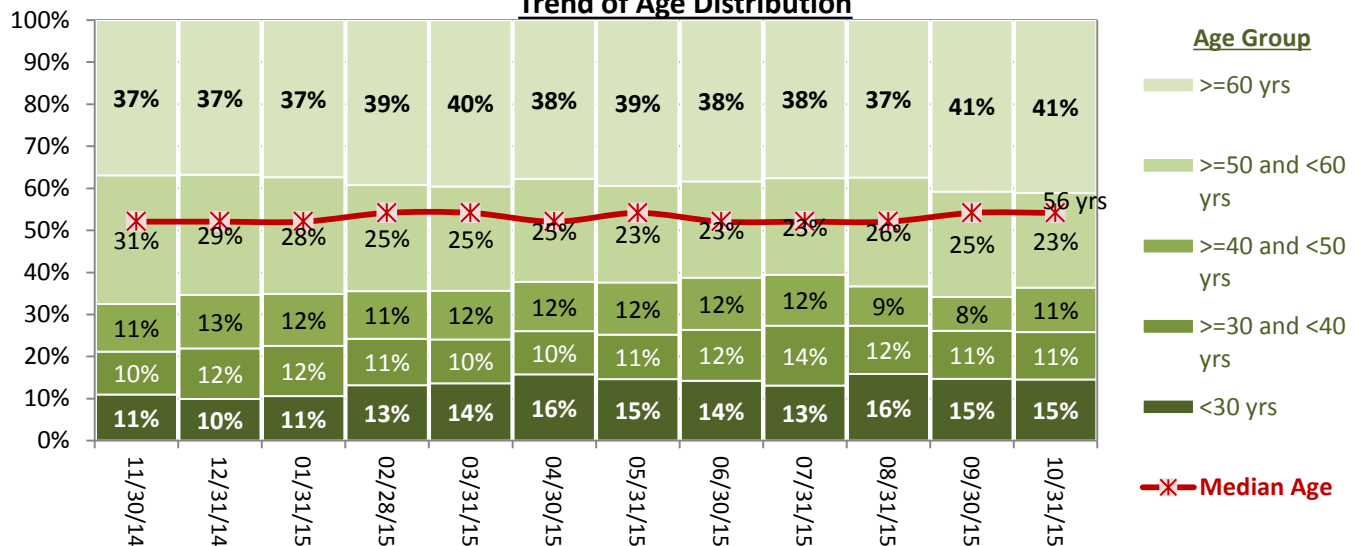
- The proportion of female individuals remaining in the Hospital’s care increased in FY14, from 26% in October 2013 to 33% in September 2014; since then, the percentage of female individuals remained in the range of 30% to 33% throughout FY15 and continued to be that range in October 2015.
- As of September 30, 2015, the percentage of individuals with 60 years or older remaining in care (41%) reached its highest level since the Hospital reported the trend of age distribution in 2008, and that percentage continued to remain the same in October 2015. The percentage of younger population, particularly those under 30 years, also has increased for the past year. It is due in part to an increase of pre-trial admissions, which tend to include more of younger population. As of October 2015, those under 30 years old made up about 15% of all in care.
- The median length of stay (LOS) for individuals remaining in care decreased gradually in FY14 and the first quarter of FY15, falling to the lowest level (362 days or 12 months) at the end of December 2014. Since then, the median LOS increased gradually, reaching 466 days (about 15 months) at the end of September 2015. The overall median and average LOS declined slightly in October 2015 as LOS for pre-trial population noticeably decreased. However, both the median and the average LOS for civil and post-trial population continued to increase.

24. Demographics

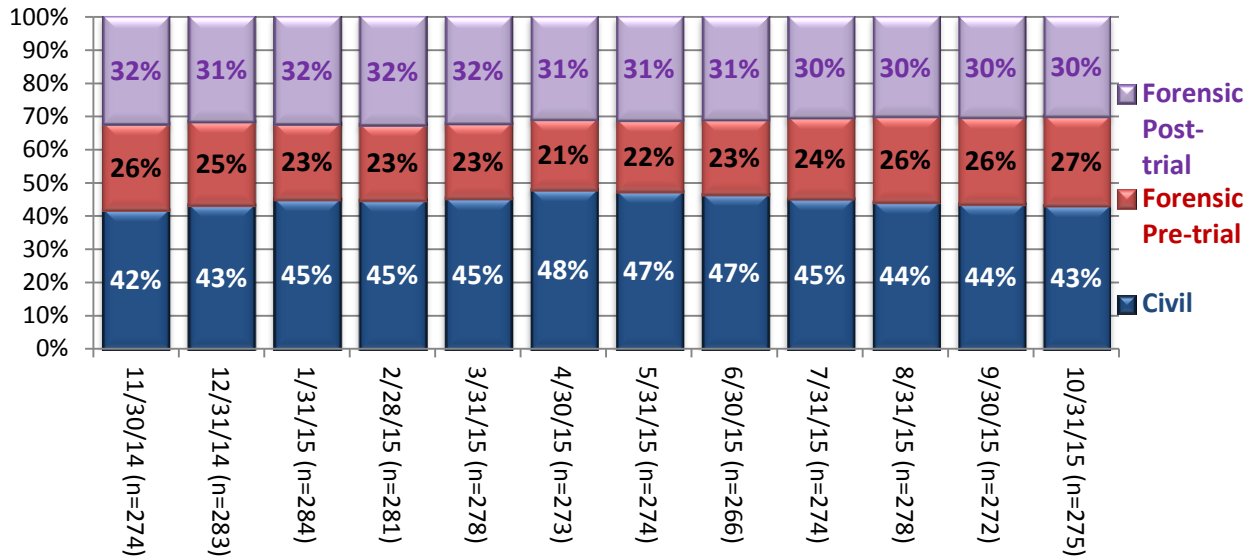
Trend of Gender Distribution



Trend of Age Distribution

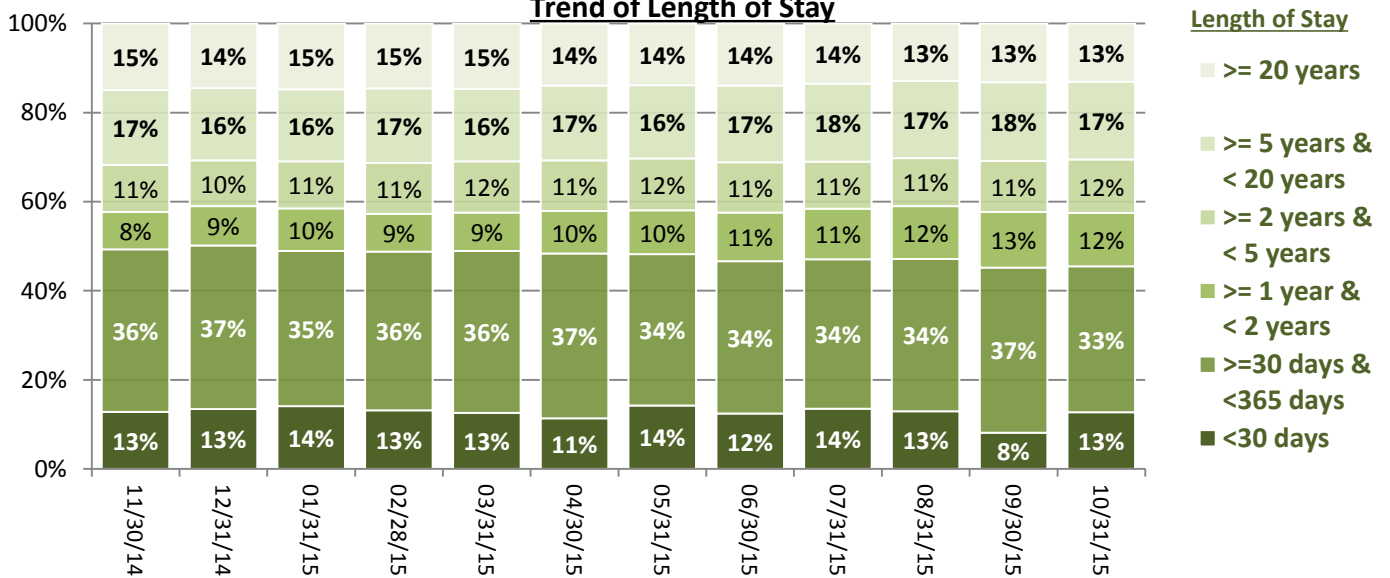


Trend of Legal Status Distribution

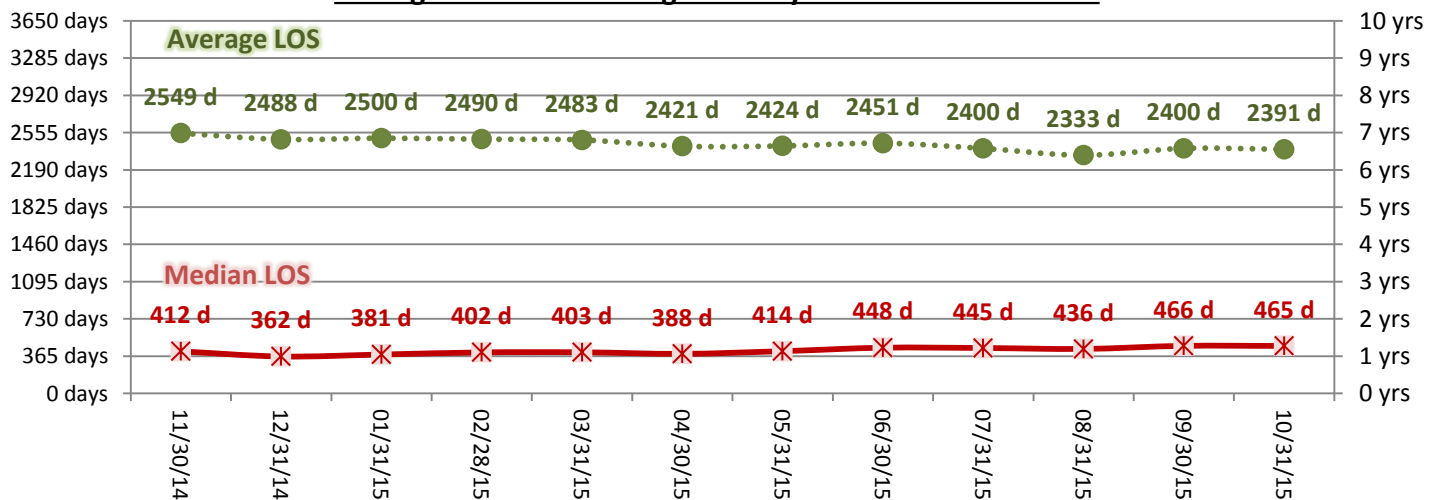


25. Length of Stay

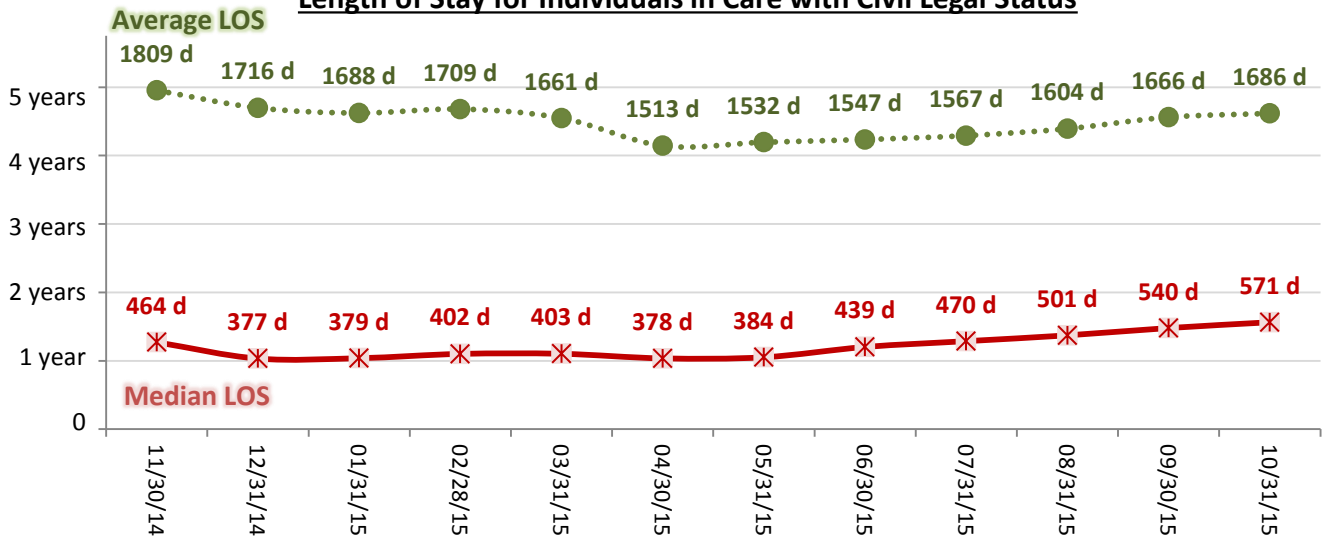
Trend of Length of Stay



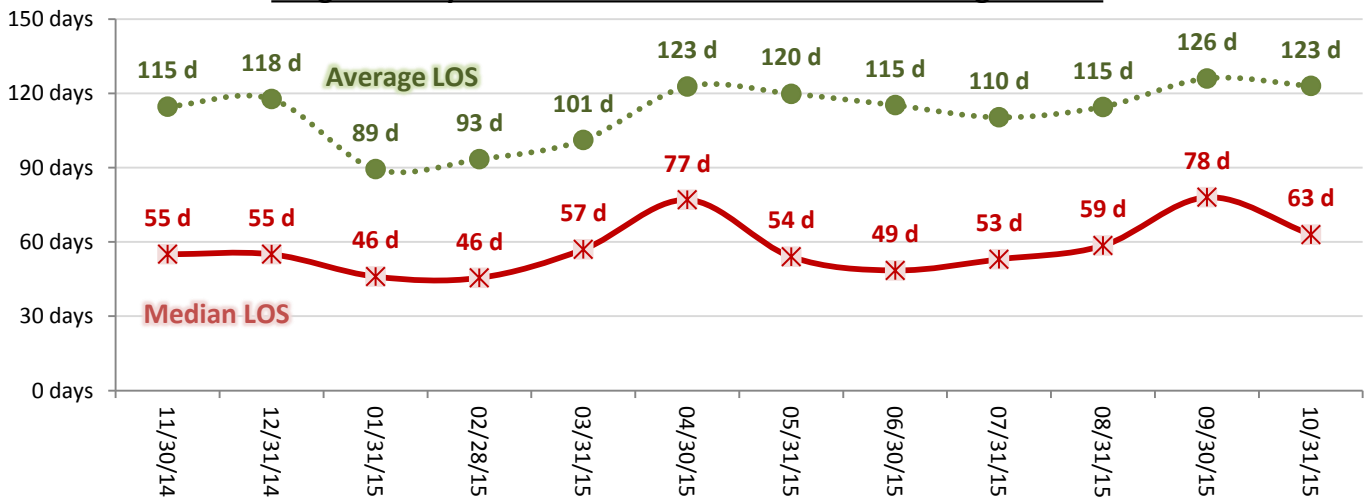
Average and Median Length of Stay for Individuals in Care



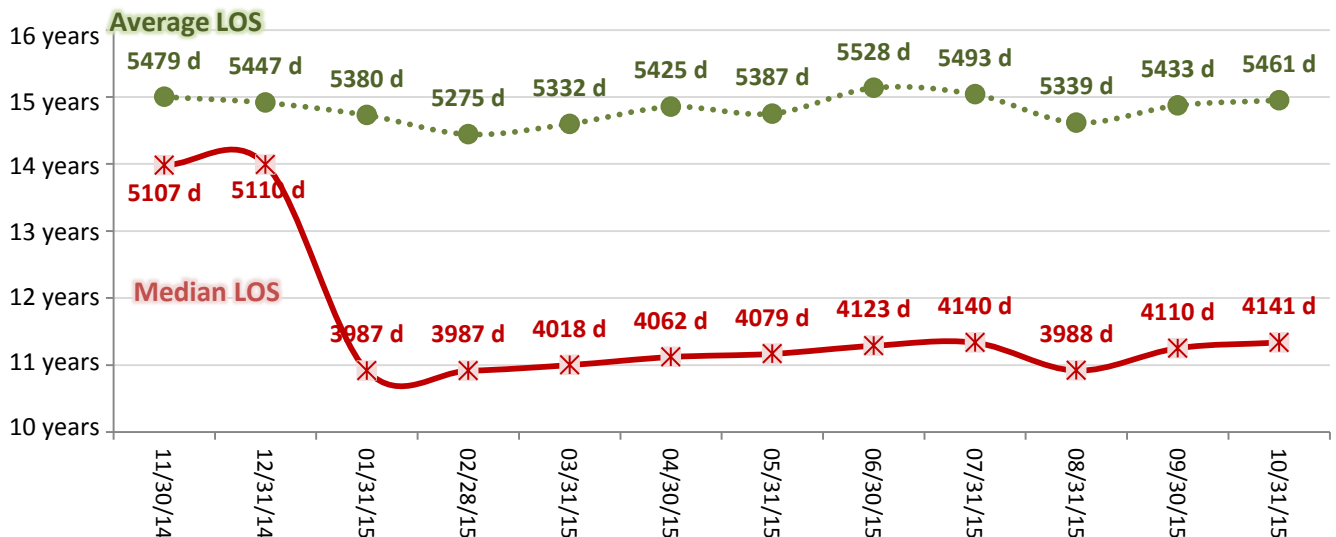
Length of Stay for Individuals in Care with Civil Legal Status



Length of Stay for Individuals in Care with Pre-trial Legal Status



Length of Stay for Individuals in Care with Post-trial Legal Status



Performance Related Information for Staff & Managers

1. Census, Admissions, Discharges & Transfers

Data Source: Avatar

Updated as of 11/18/15

Category	Nov-14	Dec-14	Jan-15	Feb-15	Mar-15	Apr-15	May-15	Jun-15	Jul-15	Aug-15	Sep-15	Oct-15	Monthly Average	Total (12mths)	Figure	
Admissions	Civil	12	18	18	16	19	20	16	15	15	14	13	16	16	192	Figure 1
	Pre-trial	23	23	22	21	17	12	22	20	25	22	14	25	21	246	
	Post-trial	0	2	2	2	1	1	4	1	1	2	0	1	1	17	
	Total	35	43	42	39	37	33	42	36	41	38	27	42	38	455	
Discharges	Civil	13	13	19	23	18	15	22	25	17	17	18	17	18	217	Figure 2
	Pre-trial	21	20	22	16	19	17	16	15	16	15	14	21	18	212	
	Post-trial	3	1	1	2	3	6	3	4	0	2	1	1	2	27	
	Total	37	34	42	41	40	38	41	44	33	34	33	39	38	456	
Net Increase During Month	Civil	-1	5	-1	-7	1	5	-6	-10	-2	-3	-5	-1		-25	
	Pre-trial	2	3	0	5	-2	-5	6	5	9	7	0	4		34	
	Post-trial	-3	1	1	0	-2	-5	1	-3	1	0	-1	0		-10	
	Total	-2	9	0	-2	-3	-5	1	-8	8	4	-6	3		-1	
All Individuals on Roll at End of Month	274	283	284	281	278	273	274	266	274	278	272	275	276			
a. Present on Unit	270	281	275	274	276	270	269	264	271	275	267	268	272			
b. On AL	4	2	9	7	2	3	5	2	3	3	5	7	4			
c. On UL	0	0	0	0	0	0	0	0	0	0	0	0	0			
All Individuals on Roll: Daily Average during Month*	272	277	284	280	274	274	272	270	270	275	275	277	275			
a. Present on Unit	269	273	279	276	269	270	269	264	266	272	270	272	271		Figure 3	
b. On AL	3	4	5	4	5	4	3	6	4	3	5	5	3.8			
c. On UL	0	0	0	0	0	0	0	0	0	0	0	0	0.00			
Patient Days**	8078	8472	8610	7738	8348	8095	8349	7925	8247	8435	8114	8439	8238	98850		
Inter-Unit Transfers during Month	9	13	7	7	11	1	22	14	14	6	13	20	11	137	Figure 4	
Medical Leaves Initiated during Month	Emergency	10	18	23	11	11	10	18	20	15	10	13	8	14	167	
	Non-Emer	71	61	59	55	71	79	81	96	95	89	69	86	76	912	
	Total	81	79	82	66	82	89	99	116	110	99	82	94	90	1079	
Non-Medical Leaves Initiated during Month	390	393	412	323	391	334	251	323	374	322	290	356	347	4159		
UL Initiated during Month	0	0	0	0	0	0	1	1	1	0	0	0	0	3		
Total Unique Patients Served during Month	310	315	326	320	317	306	314	305	305	311	302	312	312			
30 Day Readmission***	Civil	0	0	3	3	1	2	1	2	1	1	1		1	15	
	Pre-trial	0	1	1	0	1	1	0	0	0	0	0		0	4	
	Post-trial	0	1	0	0	0	2	0	0	0	0	0		0	3	
	Total	0	2	4	3	2	5	1	2	1	1	1		2	22	

* This is the average number of individuals served on a given day for the respective month. Due to rounding from average calculation, numbers from its subcategories a, b, & c may not add up to the total number on this row.

** It counts the number of patients who are present on the unit and excludes those on authorized or unauthorized leave at 11:59pm on a given day.

*** Number of patients returning within 30 days of discharges that occurred during month.

Performance Related Information for Staff & Managers

2. Key Performance Indicators

Data Source: UI DB, MV DB, ADR DB, Restraint/Seclusion Log, and Avatar

Updated as of 11/18/15

Category	Nov-14	Dec-14	Jan-15	Feb-15	Mar-15	Apr-15	May-15	Jun-15	Jul-15	Aug-15	Sep-15	Oct-15	Monthly Average	NPR* (Jun-13)	Figure
30 Day Readmit (Discharge Cohort)**	Civil	0.0%	0.0%	15.8%	13.0%	5.6%	13.3%	4.5%	8.0%	5.9%	5.9%	5.6%	7.5%		Figure 5
	Pre-trial	0.0%	5.0%	4.5%	0.0%	5.3%	5.9%	0.0%	0.0%	0.0%	0.0%	0.0%	2.1%		
	Post-trial	0.0%	100.0%	0.0%	0.0%	0.0%	33.3%	0.0%	0.0%	0.0%	0.0%	0.0%	12.1%		
	Combined	0.0%	5.9%	9.5%	7.3%	5.0%	13.2%	2.4%	4.5%	3.0%	2.9%	3.0%	5.3%	6.9%	
Number of Unusual Incidents*	208	238	240	198	197	195	274	220	231	202	222	253	223		Figure 6
Patient Unusual Incident Rate	23.5	26.2	25.8	24.6	22.2	22.4	30.7	26.0	26.8	22.2	25.3	28.7	25.4		Figure 7
UI by Severity	Catastrophe	0	0	0	0	0	0	0	0	0	0	0	0		Figure 9
	High	42	39	53	34	35	32	69	27	22	22	37	42	38	
	Medium	90	103	113	103	76	92	108	73	79	65	84	100	91	
	Low	76	96	74	62	86	71	97	120	130	115	101	111	95	
Physical Assault Incident Rate	5.2	7.0	8.4	7.5	6.9	5.9	9.2	6.2	5.8	5.3	7.6	8.8	7.0		
Selected Types of Incidents	Physical Assault	42	59	72	58	58	48	77	49	48	45	62	74	58	Figure 10
	Aggressive Behav.	71	78	73	63	46	59	93	61	83	75	83	102	74	
	Psych Emergency	58	72	89	72	48	64	96	25	39	28	59	55	59	
	Fall	31	35	27	33	27	18	32	28	31	33	23	25	29	
	Injury	39	37	41	32	35	32	50	24	36	31	39	45	37	
Physical Assaults by Severity	High	14	10	28	13	14	9	29	10	5	4	9	20	13	Figure 11
	Medium	17	21	26	30	20	17	23	21	12	19	25	36	22	
	Low	11	28	18	15	24	22	25	18	31	22	28	18	22	
Patient Injury Rate***	0.12	0.00	0.00	0.13	0.12	0.12	0.36	0.13	0.12	0.36	0.37	0.12	0.16	0.38	
Patients with Major Injuries***	1	0	0	1	1	1	3	1	1	3	3	1	1		Figure 12
Total Patients Injured***	27	24	31	22	24	19	29	17	26	20	32	34	25		
Total Staff Injured***	23	23	17	11	13	13	32	12	8	10	10	23	16		Figure 13
Patient Fall Rate	3.59	4.01	2.67	4.26	2.99	1.98	3.47	3.15	3.64	3.79	2.71	2.84	3.26		Figure 14
Total Patients who Fell	29	34	23	33	25	16	29	25	30	32	22	24	27		
Total Staff who Fell	3	3	1	3	4	2	5	3	1	2	2	4	3		
Percent of Patients Restrained	1.0%	1.3%	0.6%	1.3%	0.3%	7.5%	10.2%	8.2%	6.9%	5.8%	7.9%	10.9%	1.1%	5.8%	Figure 15
Percent of Patients Secluded	3.5%	2.5%	3.1%	3.8%	2.8%	2.9%	3.5%	3.3%	2.0%	4.8%	4.3%	5.1%	3.5%	2.4%	
Restraint Hours Rate	0.021	0.105	0.072	0.015	0.004	0.031	0.098	0.074	0.163	0.008	0.031	0.084	0.070	0.71	Figure 16
Seclusion Hours Rate	0.086	0.041	0.045	0.088	0.101	0.043	0.060	0.150	0.067	0.062	0.260	0.281	0.107	0.44	
Elopement Rate	0.00	0.00	0.00	0.00	0.00	0.00	0.12	0.13	0.12	0.00	0.00	0.00	0.03	0.13	Figure 17
Medication Variance Rate	1.73	0.83	1.16	5.56	10.54	2.22	2.16	1.51	2.06	1.42	0.86	4.50	2.87		Figure 18
Adverse Drug Reaction Rate	0.50	0.35	0.46	0.13	0.48	0.25	0.36	0.38	0.24	0.36	0.12	0.00	0.30		Figure 19
Missing Med-Admin Documentation	0.57%	0.58%	0.86%	0.87%	0.56%	0.54%	0.62%	0.93%	0.76%	0.50%	0.42%	0.47%	0.64%		Figure 20
Percent of Medication Refusal	7.51%	7.14%	7.45%	7.22%	6.89%	6.58%	7.23%	5.92%	5.88%	6.17%	5.57%	6.90%	6.71%		Figure 21
SiteFM Work Orders Completed within 3 days	68%	70%	72%	61%	73%	73%	65%	73%	67%	63%	70%	75%	69%		Figure 23
Total SiteFM Work Orders	444	466	521	506	498	487	436	561	543	515	503	509	499		
Total SiteFM Work Orders	655	661	721	831	678	667	667	768	816	821	715	682	724		

* National Public Rate, NASMHPD Research Institute, National Research Institute (NRI), Data as of June 2013, Published in November 2013.

** Percentage of patients returning within 30 days of discharges that occurred during month

*** Refer to the next page [UI & Medication]

Performance Related Information for Staff & Managers

3. Unusual Incident & Medication

Data Source: UI DB, MV DB, ADR DB, and Avatar

Updated as of 11/18/15

Category		Nov-14	Dec-14	Jan-15	Feb-15	Mar-15	Apr-15	May-15	Jun-15	Jul-15	Aug-15	Sep-15	Oct-15	Monthly Average	Total (12mths)	NPR* (Jun-13)
Unusual Incidents (excluding MV)**	Total UIs	208	238	240	198	197	195	274	220	231	202	222	253	223	2678	
	Major UIs Only	168	189	188	157	146	153	225	130	126	115	141	154	158	1892	
	Pt Involved UI Only	190	222	222	190	185	181	256	206	221	187	205	242	209	2507	
	Patient UI Rate	23.5	26.2	25.8	24.6	22.2	22.4	30.7	26.0	26.8	22.2	25.3	28.7		25.4	
	Unique Pts Involved in UI	122	122	139	115	134	107	138	104	132	111	117	127	122	1468	
Selected Types of Incidents	Physical Assault	42	59	72	58	58	48	77	49	48	45	62	74	58	692	
	Aggressive Behavior	71	78	73	63	46	59	93	61	83	75	83	102	74	887	
	Psych Emergency	58	72	89	72	48	64	96	25	39	28	59	55	59	705	
	Fall	31	35	27	33	27	18	32	28	31	33	23	25	29	343	
	Injury	39	37	41	32	35	32	50	24	36	31	39	45	37	441	
	Physical Assault Rate	5.2	7.0	8.4	7.5	6.9	5.9	9.2	6.2	5.8	5.3	7.6	8.8		7.0	
UI by Severity	Catastrophe	0	0	0	0	0	0	0	0	0	0	0	0	0	0	
	High	42	39	53	34	35	32	69	27	22	22	37	42	38	454	
	Medium	90	103	113	103	76	92	108	73	79	65	84	100	91	1086	
	Low	76	96	74	62	86	71	97	120	130	115	101	111	95	1139	
Physical Assaults by Severity	High	14	10	28	13	14	9	29	10	5	4	9	20	13	165	
	Medium	17	21	26	30	20	17	23	21	12	19	25	36	22	267	
	Low	11	28	18	15	24	22	25	18	31	22	28	18	22	260	
	Total Patients who Fell	29	34	23	33	25	16	29	25	30	32	22	24	27	322	
	Patient Fall Rate	3.59	4.01	2.67	4.26	2.99	1.98	3.47	3.15	3.64	3.79	2.71	2.84		3.26	
	Total Staff who Fell	3	3	1	3	4	2	5	3	1	2	2	4	3	33	
	Total Patients Injured***	27	24	31	22	24	19	29	17	26	20	32	34	25	305	
	Patients with Major Injuries***	1	0	0	1	1	1	3	1	1	3	3	1	1	16	
	Patient Injury Rate***	0.12	0.00	0.00	0.13	0.12	0.12	0.36	0.13	0.12	0.36	0.37	0.12		0.16	0.38
	Total Staff Injured**	23	23	17	11	13	13	32	12	8	10	10	23	16		
	Total UIs Documented in Avatar	0	0	0	0	0	0	1	1	1	0	0	0	0	3	
	Elopement Rate	0.00	0.00	0.00	0.00	0.00	0.00	0.12	0.13	0.12	0.00	0.00	0.00		0.03	0.13
	Med Variance (MV) Reports**	14	7	10	43	88	18	18	12	17	12	7	38	24	284	
	MV Rate	1.73	0.83	1.16	5.56	10.54	2.22	2.16	1.51	2.06	1.42	0.86	4.50		2.87	
	Adverse Drug Reactions Reports	4	3	4	1	4	2	3	3	2	3	1	0	3	30	
	ADR Rate	0.50	0.35	0.46	0.13	0.48	0.25	0.36	0.38	0.24	0.36	0.12	0.00		0.30	
	Total Med Administrations Scheduled	#####	#####	#####	96178	103742	99674	101673	98847	101726	104695	99956	105811		1233703	
	Total Missing Documentations	595	622	939	838	579	543	626	923	777	522	423	500		7887	
	Percent of Missing Documentation	0.57%	0.58%	0.86%	0.87%	0.56%	0.54%	0.62%	0.93%	0.76%	0.50%	0.42%	0.47%		0.64%	
	Total Medication Doses Refused	7823	7676	8164	6940	7145	6562	7352	5856	5977	6463	5572	7303		82833	
	Percent of Medication Refusal	7.51%	7.14%	7.45%	7.22%	6.89%	6.58%	7.23%	5.92%	5.88%	6.17%	5.57%	6.90%		6.71%	
	Total STAT Orders	138	139	220	135	104	144	252	159	141	138	182	251	167		Figure 22
	Total STAT Events****	68	74	98	68	52	73	116	68	66	62	83	119	79		
	Total Individuals Involved >=1 STAT	28	33	40	31	32	29	42	33	31	34	38	49	35		
	Total Patients with >=3 STAT Events	11	8	7	8	3	13	15	7	7	7	11	15	9		

* National Public Rate, NASMHPD Research Institute, National Research Institute (NRI), Data as of June 2013, Published in November 2013.

** Numbers may change if any additional UI report is made after the data run date from UI database (around the 15th of the following month); According to the revised UI policy as of November 4, 2013, a medication variance (MV) incident became no longer considered to be an unusual incident, and a medication or vital sign refusal incident is not longer an UI as of May 2014. UI data for the past 12 months in this report has been updated to reflect this change and reanalyzed in order to show the UI trend in consistent logic.

*** Injury is broadly defined to include any type of injuries regardless of the cause or severity level. The total number of patients injured represents all of the reported injuries including minor injuries treated with first aid alone. However, the patient injury rate considers only the number of patient injuries that required beyond first-aid level treatment based on the NRI definition and the patient injury rate is the number of 'major' patient injuries per every 1000 inpatient days

**** One STAT event may involve more than one STAT order for the same patient. Any orders placed within 20 minute timeframe are considered to belong to one STAT event.

Performance Related Information for Staff & Managers

4. Restraint & Seclusion

Data Source: Restraint/Seclusion Log and UI DB (for # of total events and patients) and Avatar (for patient days/hours)

Updated as of 11/18/15

Category		Nov-14	Dec-14	Jan-15	Feb-15	Mar-15	Apr-15	May-15	Jun-15	Jul-15	Aug-15	Sep-15	Oct-15	Monthly Average	Total (12mths)	NPR* (Jun-13)
Number of Restraint Events	Mechanical	4	9	9	4	1	6	16	5	15	1	3	8	6.8	81	
	Physical Hold						42	61	35	26	27	38	67	42.3		
	Total						48	77	40	41	28	41	75	50.0		
Number of Unique Patients Restrained	Mechanical	3	4	2	4	1	3	7	5	4	1	2	6	3.5		
	Physical Hold						20	25	20	17	17	22	28	21.3		
	Total						23	32	25	21	18	24	34	25.3		
Percentage of Patients Restrained**	Mechanical	1.0%	1.3%	0.6%	1.3%	0.3%	1.0%	2.2%	1.6%	1.3%	0.3%	0.7%	1.9%	1.1%		
	Physical Hold						6.5%	8.0%	6.6%	5.6%	5.5%	7.3%	9.0%	6.9%		
	Total						7.5%	10.2%	8.2%	6.9%	5.8%	7.9%	10.9%	8.2%		5.8%
Total Restraint Hours (h:mm)**	Mechanical	4:06	21:26	14:56	2:46	0:50	5:19	18:37	13:22	31:37	0:05	2:45	10:29	10:31	126:18	
	Physical Hold						0:42	1:01	0:47	0:37	1:36	3:22	6:35	2:05	6 mths	
	Total						6:01	19:38	14:09	32:14	1:41	6:07	17:04	13:50	6 mths	
Restraint Hours Rate**	Mechanical	0.021	0.105	0.072	0.015	0.004	0.027	0.093	0.070	0.160	0.000	0.014	0.052	0.053	12 mths	
	Physical Hold						0.004	0.005	0.004	0.003	0.008	0.017	0.033	0.011	6 mths	
	Total						0.031	0.098	0.074	0.163	0.008	0.031	0.084	0.070	6 mths	0.71
Number of Seclusion Events		19	12	15	20	15	15	20	21	14	18	37	40	20.5	246	
Number of Unique Patients Secluded		11	8	10	12	9	9	11	10	6	15	13	16	10.8		
Percentage of Patients Secluded		3.5%	2.5%	3.1%	3.8%	2.8%	2.9%	3.5%	3.3%	2.0%	4.8%	4.3%	5.1%	3.5%		2.4%
Total Seclusion Hours (h:mm)		16:36	8:18	9:24	16:21	20:15	8:24	12:02	28:28	13:18	12:36	50:35	56:52	21:05	253:09	
Seclusion Hours Rate		0.086	0.041	0.045	0.088	0.101	0.043	0.060	0.150	0.067	0.062	0.260	0.281		0.107	0.44

* National Public Rate, NASMHPD Research Institute, National Research Institute (NRI), Data as of June 2013, Published in November 2013.

** Restraint data prior to April 2015 includes only mechanical restraints. The Hospital's restraint policy has been revised to consider a physical hold a restraint and data as of April 2015 reflects this change. The duration of each physical hold event is counted as one (1) minute as a physical hold is ordered/used only as a temporary intervention that lasts less than a minute to break up any physical altercations or to administer emergency medications.

Performance Related Information for Staff & Managers

6. Major Unusual Incidents by Incident Location/Unit

Data Source: UI DB

Updated as of 11/18/15

Category		Nov-14	Dec-14	Jan-15	Feb-15	Mar-15	Apr-15	May-15	Jun-15	Jul-15	Aug-15	Sep-15	Oct-15	Monthly Average	Total (12mths)	Percent
Total Unusual Incidents		208	238	240	198	197	195	274	220	231	202	222	253	223	2678	100%
Incident Location	1A	12	9	5	5	12	13	16	18	8	8	16	6	11	128	5%
	1B	14	12	12	10	13	18	8	7	15	21	19	18	14	167	6%
	1C	14	24	28	25	7	7	33	22	8	19	12	15	18	214	8%
	1D	18	40	37	15	23	27	29	18	37	17	22	24	26	307	11%
	1E	14	26	15	12	12	25	37	14	27	15	29	21	21	247	9%
	1F	24	34	43	28	28	20	46	28	18	17	30	45	30	361	13%
	1G	7	7	11	12	7	16	12	14	21	21	12	17	13	157	6%
	2A	12	7	16	3	6	5	7	5	14	4	14	11	9	104	4%
	2B	15	2	2	3	4	4	5	3	5	3	4	1	4	51	2%
	2C	10	16	14	24	10	2	9	20	24	14	15	35	16	193	7%
	2D	26	22	19	19	33	24	22	24	23	23	14	27	23	276	10%
	TLC	26	23	21	31	27	16	25	32	14	18	17	26	23	276	10%
	Other	16	16	17	11	15	18	25	15	17	22	18	7	16	197	7%
Physical Assault		42	59	72	58	58	48	77	49	48	45	62	74	58	692	100%
Incident Location	1A	0	0	1	2	4	2	3	4	3	1	2	0	2	22	3%
	1B	2	3	0	1	0	1	0	0	0	3	1	1	1	12	2%
	1C	0	8	6	6	2	1	15	4	2	8	4	4	5	60	9%
	1D	3	5	10	4	7	7	6	3	9	2	6	9	6	71	10%
	1E	4	3	5	4	8	6	6	5	6	4	10	4	5	65	9%
	1F	9	19	15	13	10	8	20	14	8	4	17	28	14	165	24%
	1G	0	2	4	5	1	4	1	6	5	7	6	4	4	45	7%
	2A	1	2	5	1	0	1	0	0	1	0	2	1	1	14	2%
	2B	1	0	0	0	0	0	0	0	0	0	0	0	0	1	0%
	2C	6	5	7	10	4	0	3	3	6	3	4	11	5	62	9%
	2D	8	6	7	4	12	12	8	4	6	10	4	7	7	88	13%
	TLC - Intensive	5	4	8	6	9	2	7	5	2	3	2	5	5	58	8%
	TLC - Transitional	3	1	3	1	1	3	2	0	0	0	2	0	1	16	2%
	Other	0	1	1	1	0	1	6	1	0	0	2	0	1	13	2%

Performance Related Information for Staff & Managers

6. Major Unusual Incidents by Incident Location/Unit

Data Source: UI DB

Updated as of 11/18/15

Category		Nov-14	Dec-14	Jan-15	Feb-15	Mar-15	Apr-15	May-15	Jun-15	Jul-15	Aug-15	Sep-15	Oct-15	Monthly Average	Total (12mths)	Percent
Aggressive Behavior		71	78	73	63	46	59	93	61	83	75	83	102	74	887	128%
Incident Location	1A	1	3	0	0	0	1	0	2	1	1	1	4	1	14	2%
	1B	2	1	0	0	1	3	0	0	2	9	7	2	2	27	4%
	1C	3	7	10	12	2	2	9	9	3	7	3	4	6	71	10%
	1D	7	23	21	8	7	14	15	11	14	6	11	10	12	147	21%
	1E	7	13	7	5	1	12	21	5	11	6	14	15	10	117	17%
	1F	11	12	15	10	7	7	19	6	5	4	9	11	10	116	17%
	1G	2	0	0	2	1	6	8	3	10	11	3	8	5	54	8%
	2A	2	1	6	2	2	1	3	2	11	3	10	7	4	50	7%
	2B	11	0	0	0	0	0	0	0	1	0	0	0	1	12	2%
	2C	2	4	1	5	3	0	2	7	6	5	6	17	5	58	8%
	2D	11	8	5	7	11	6	6	5	12	10	8	15	9	104	15%
	TLC - Intensive	4	3	4	8	6	4	4	6	1	3	4	5	4	52	8%
	TLC - Transitional	5	1	3	2	2	3	5	4	4	3	4	2	3	38	5%
	Other	3	2	1	2	3	0	1	1	2	7	3	2	2	27	4%
Psych Emergency		58	72	89	72	48	64	96	25	39	28	59	55	59	705	102%
Incident Location	1A	0	3	1	1	0	1	0	0	1	0	0	1	1	8	1%
	1B	2	1	0	0	0	3	0	0	2	5	4	3	2	20	3%
	1C	0	4	8	7	4	1	19	2	4	2	2	2	5	55	8%
	1D	9	14	16	11	10	15	16	5	9	3	9	12	11	129	19%
	1E	10	15	11	7	5	18	20	5	7	3	15	7	10	123	18%
	1F	16	19	22	15	15	10	26	9	3	3	14	13	14	165	24%
	1G	0	0	1	2	1	4	2	1	5	3	3	2	2	24	3%
	2A	0	1	4	1	0	2	3	1	4	1	5	5	2	27	4%
	2B	5	0	0	0	0	0	0	0	0	0	0	0	0	5	1%
	2C	0	1	4	7	1	0	0	0	0	2	3	5	2	23	3%
	2D	11	13	14	9	3	7	3	2	1	2	1	2	6	68	10%
	TLC - Intensive	2	1	5	10	6	1	1	0	2	1	1	2	3	32	5%
	TLC - Transitional	2	0	3	0	1	2	4	0	1	1	0	1	1	15	2%
	Other	1	0	0	2	2	0	2	0	0	2	2	0	1	11	2%

Performance Related Information for Staff & Managers

6. Major Unusual Incidents by Incident Location/Unit

Data Source: UI DB

Updated as of 11/18/15

Category		Nov-14	Dec-14	Jan-15	Feb-15	Mar-15	Apr-15	May-15	Jun-15	Jul-15	Aug-15	Sep-15	Oct-15	Monthly Average	Total (12mths)	Percent	
Fall		31	35	27	33	27	18	32	28	31	33	23	25	29	343	100%	
Incident Location	1A	9	3	3	2	5	0	8	8	3	3	9	1	5	54	16%	
	1B	5	4	3	6	3	2	2	5	9	8	7	5	5	59	17%	
	1C	2	8	2	0	3	1	2	0	0	0	1	1	2	20	6%	
	1D	2	1	1	0	2	4	1	0	1	2	0	2	1	16	5%	
	1E	2	1	0	2	0	0	1	2	2	3	1	2	1	16	5%	
	1F	2	2	7	4	3	1	2	1	6	2	0	3	3	33	10%	
	1G	1	1	2	4	1	1	2	4	1	4	0	1	2	22	6%	
	2A	0	2	0	0	1	1	2	0	2	0	1	1	1	10	3%	
	2B	1	0	0	1	1	2	2	1	1	3	0	0	1	12	3%	
	2C	0	5	3	5	0	0	0	1	1	0	1	5	2	21	6%	
	2D	1	1	1	3	3	2	3	3	3	1	2	1	0	2	21	6%
	TLC - Intensive	1	1	2	1	1	1	4	1	1	2	0	4	2	19	6%	
	TLC - Transitional	3	3	0	1	0	0	0	0	0	1	1	0	0	1	9	3%
	Other	2	3	3	4	4	3	3	3	2	2	3	2	0	3	31	9%
Physical Injury		39	37	41	32	35	32	50	24	36	31	39	45	37	441	100%	
Incident Location	1A	1	0	2	2	2	2	3	1	2	0	1	0	1	16	4%	
	1B	3	1	0	1	4	5	2	0	0	3	3	1	2	23	5%	
	1C	0	3	5	4	3	0	11	2	2	8	7	3	4	48	11%	
	1D	3	7	4	1	7	5	6	3	6	4	4	9	5	59	13%	
	1E	4	1	0	2	1	2	5	3	2	3	3	1	2	27	6%	
	1F	8	8	5	8	7	3	8	6	5	3	9	17	7	87	20%	
	1G	1	2	3	1	0	1	0	1	2	2	3	3	2	19	4%	
	2A	2	2	0	1	0	2	1	0	1	0	1	1	1	11	2%	
	2B	0	0	0	0	0	1	1	1	1	1	2	0	1	7	2%	
	2C	2	4	6	6	1	0	1	2	3	0	3	5	3	33	7%	
	2D	7	5	5	1	1	4	3	3	3	3	3	1	3	3	39	9%
	TLC - Intensive	3	1	7	1	5	2	4	1	5	0	1	2	3	32	7%	
	TLC - Transitional	3	2	1	2	0	0	2	0	0	0	0	0	1	10	2%	
	Other	2	1	3	2	4	5	3	1	4	4	1	0	3	30	7%	

* Not every incident is a major incident. This counts only those incidents that were classified to be major based on the policy.

Performance Related Information for Staff & Managers

5. Demographic Information of Individuals in Care

Data Source: Avatar

Updated as of 11/18/15

Category	Sub-group	Nov-14	Dec-14	Jan-15	Feb-15	Mar-15	Apr-15	May-15	Jun-15	Jul-15	Aug-15	Sep-15	Oct-15	Monthly Average	Percent*
Total Active (on Roll) at End of Month*		274	283	284	281	278	273	274	266	274	278	272	275	276	
Gender	Female	87	93	90	89	87	90	87	81	85	85	81	85	87	31.4%
	Male	187	190	194	192	191	183	187	185	189	193	191	190	189	68.6%
Age	Median Age (Years)	55 yrs	55 yrs	55 yrs	56 yrs	56 yrs	55 yrs	56 yrs	55 yrs	55 yrs	55 yrs	56 yrs	56 yrs	55 yrs	Figure 24
	<30 years old	30	28	30	37	38	43	40	38	36	44	40	40	37	13.4%
	>=30 and <40 years old	28	34	34	31	29	28	29	32	39	32	31	31	32	11.4%
	>=40 and <50 years old	31	36	35	32	32	32	34	33	33	26	22	29	31	11.3%
	>=50 and <60 years old	84	81	79	71	69	67	63	61	63	72	68	62	70	25.4%
	>=60 years old	101	104	106	110	110	103	108	102	103	104	111	113	106	38.5%
Legal Status of Individuals on Roll at End of Month	Emergency	21	29	27	27	38	45	38	32	32	25	25	24	30	11.0%
	Inpatient Commitment	35	35	36	36	33	35	34	34	33	33	32	28	34	12.2%
	Outpatient Commitment	27	27	27	28	17	16	21	22	22	28	25	27	24	8.7%
	Voluntary	32	32	37	34	38	35	37	36	37	37	37	40	36	13.0%
	Non-Protesting	0	0	1	1	0	0	0	0	0	0	0	0	0	0.1%
	Civil Sub-total	115	123	128	126	126	131	130	124	124	123	119	119	124	44.9%
	DC Exam	35	43	40	41	38	38	39	30	35	36	39	43	38	13.8%
	Mentally Incompetent	36	28	25	23	25	20	20	30	32	36	32	31	28	10.2%
	Forensic Pre-trial Sub-total	71	71	65	64	63	58	59	60	67	72	71	74	66	24.0%
	NGBRI - DC	74	75	76	76	74	70	72	69	70	71	70	70	72	26.2%
	NGBRI - US	10	10	10	10	10	9	9	9	9	8	8	8	9	3.3%
	NGBRI - VI	1	1	1	1	1	1	1	1	1	1	1	1	1	0.4%
	Dual Commitment	1	1	1	1	1	1	0	0	0	0	0	0	1	0.2%
Sexual Psychopath (Miller Act)	2	2	3	3	3	3	3	3	3	3	3	3	3	1.0%	
Forensic Post-trial Sub-total	88	89	91	91	89	84	85	82	83	83	82	82	86	31.1%	
Length of Stay	<30 Days	35	38	40	37	35	31	39	33	37	36	22	35	35	12.6%
	>=30 ~ <365 Days	100	104	99	100	101	101	93	91	92	95	101	90	97	35.2%
	>= 1 Year & < 2 Years	23	25	27	24	24	26	27	29	31	33	34	33	28	10.1%
	>= 2 Years & < 5 Years	29	29	30	32	32	31	32	30	29	30	31	33	31	11.1%
	>= 5 Years & < 20 Years	46	46	46	47	45	46	45	46	48	48	48	48	47	16.9%
	>= 20 Years	41	41	42	41	41	38	38	37	37	36	36	36	39	14.0%
	Median LOS (Days)	412 d	362 d	381 d	402 d	403 d	388 d	414 d	448 d	445 d	436 d	466 d	465 d	419 d	Figure 25
	Median LOS - Civil	464 d	377 d	379 d	402 d	403 d	378 d	384 d	439 d	470 d	501 d	540 d	571 d	442 d	
	Median LOS - Pre-trial	55 d	55 d	46 d	46 d	57 d	77 d	54 d	49 d	53 d	59 d	78 d	63 d	58 d	
	Median LOS - Post-trial	5107 d	5110 d	3987 d	3987 d	4018 d	4062 d	4079 d	4123 d	4140 d	3988 d	4110 d	4141 d	4238 d	
	Average LOS (Days)	2549 d	2488 d	2500 d	2490 d	2483 d	2421 d	2424 d	2451 d	2400 d	2333 d	2400 d	2391 d	2444 d	
Average LOS - Civil	1809 d	1716 d	1688 d	1709 d	1661 d	1513 d	1532 d	1547 d	1567 d	1604 d	1666 d	1686 d	1642 d		
Average LOS - Pre-trial	115 d	118 d	89 d	93 d	101 d	123 d	120 d	115 d	110 d	115 d	126 d	123 d	112 d		
Average LOS - Post-trial	5479 d	5447 d	5380 d	5275 d	5332 d	5425 d	5387 d	5528 d	5493 d	5339 d	5433 d	5461 d	5415 d		

* Counts the total number of individuals who are on the hospital roll at end of each month. This number serves as denominator to calculate percentage of each group.

Performance Related Information for Staff & Managers

6. Demographic Information of Individuals in Care

Data Source: Avatar

Updated as of 11/18/15

Category	Sub-group	Nov-14	Dec-14	Jan-15	Feb-15	Mar-15	Apr-15	May-15	Jun-15	Jul-15	Aug-15	Sep-15	Oct-15	Monthly Average	Percent*
Total Active (on Roll) at End of Month*		274	283	284	281	278	273	274	266	274	278	272	275	276	
Gender	Female	32%	33%	32%	32%	31%	33%	32%	30%	31%	31%	30%	31%	31%	
	Male	68%	67%	68%	68%	69%	67%	68%	70%	69%	69%	70%	69%	69%	
Age	Median Age (Years)	55 yrs	55 yrs	55 yrs	56 yrs	56 yrs	55 yrs	56 yrs	55 yrs	55 yrs	55 yrs	56 yrs	56 yrs	55 yrs	
	<30 yrs	11%	10%	11%	13%	14%	16%	15%	14%	13%	16%	15%	15%	13%	
	>=30 and <40 yrs	10%	12%	12%	11%	10%	10%	11%	12%	14%	12%	11%	11%	11%	
	>=40 and <50 yrs	11%	13%	12%	11%	12%	12%	12%	12%	12%	9%	8%	11%	11%	
	>=50 and <60 yrs	31%	29%	28%	25%	25%	25%	23%	23%	23%	26%	25%	23%	25%	
	>=60 yrs	37%	37%	37%	39%	40%	38%	39%	38%	38%	37%	41%	41%	38%	
Legal Status of Individuals on Roll at End of Month	Emergency	8%	10%	10%	10%	14%	16%	14%	12%	12%	9%	9%	9%	11%	
	Inpatient Commitment	13%	12%	13%	13%	12%	13%	12%	13%	12%	12%	12%	10%	12%	
	Outpatient Commitment	10%	10%	10%	10%	6%	6%	8%	8%	8%	10%	9%	10%	9%	
	Voluntary	12%	11%	13%	12%	14%	13%	14%	14%	14%	13%	14%	15%	13%	
	Non-Protesting	0%	0%	0%	0%	0%	0%	0%	0%	0%	0%	0%	0.0%	0%	
	Civil Sub-total	42%	43%	45%	45%	45%	48%	47%	47%	45%	44%	44%	43%	45%	
	DC Exam	13%	15%	14%	15%	14%	14%	14%	11%	13%	13%	14%	16%	14%	
	Mentally Incompetent	13%	10%	9%	8%	9%	7%	7%	11%	12%	13%	12%	11%	10%	
	Forensic Pre-trial Sub-total	26%	25%	23%	23%	23%	21%	22%	23%	24%	26%	26%	27%	24%	
	NGBRI - DC	27%	27%	27%	27%	27%	26%	26%	26%	26%	26%	26%	25%	26%	
	NGBRI - US	4%	4%	4%	4%	4%	3%	3%	3%	3%	3%	3%	3%	3%	
	NGBRI - VI	0%	0%	0%	0%	0%	0%	0%	0%	0%	0%	0%	0%	0%	
	Dual Commitment	0%	0%	0%	0%	0%	0%	0%	0%	0%	0%	0%	0%	0%	
Sexual Psychopath (Miller Ac)	1%	1%	1%	1%	1%	1%	1%	1%	1%	1%	1%	1%	1%		
Forensic Post-trial Sub-total	32%	31%	32%	32%	32%	31%	31%	31%	30%	30%	30%	30%	31%		
Length of Stay	Median LOS (Days)	412 d	362 d	381 d	402 d	403 d	388 d	414 d	448 d	445 d	436 d	466 d	465 d	419 d	
	Average LOS (Days)	2549 d	2488 d	2500 d	2490 d	2483 d	2421 d	2424 d	2451 d	2400 d	2333 d	2400 d	2391 d	2444 d	
	<30 days	13%	13%	14%	13%	13%	11%	14%	12%	14%	13%	8%	13%	13%	
	>=30 days & <365 days	36%	37%	35%	36%	36%	37%	34%	34%	34%	34%	37%	33%	35%	
	>= 1 year & < 2 years	8%	9%	10%	9%	9%	10%	10%	11%	11%	12%	13%	12%	10%	
	>= 2 years & < 5 years	11%	10%	11%	11%	12%	11%	12%	11%	11%	11%	11%	12%	11%	
	>= 5 years & < 20 years	17%	16%	16%	17%	16%	17%	16%	17%	18%	17%	18%	17%	17%	
>= 20 years	15%	14%	15%	15%	15%	14%	14%	14%	14%	13%	13%	13%	14%		

* Counts the total number of individuals who are on the hospital roll at end of each month. This number serves as denominator to calculate percentage of each group.