

**Government of the District of Columbia
Department of Behavioral Health (DBH)**



Performance Related Information for Staff and Managers

**PRISM
SEPTEMBER 2013
(FY2013 TREND)**

Table of Contents



1.	Admissions to SEH	1
2.	Discharges from SEH.....	1
3.	Average Daily Census	2
4.	Transfers	2
5.	30-Day Readmission Rate	2
6.	Unusual Incidents.....	3
7.	Patient-Involved Unusual Incidents.....	3
8.	Unusual Incidents by Severity	4
9.	Selected Types of Incidents	4
10.	Physical Assaults by Severity	5
11.	Patient Injuries.....	5
12.	Staff Injuries.....	5
13.	Percent of Patients Restrained or Secluded.....	6
14.	Restraint Hours Rate & Seclusion Hours Rate	6
15.	Eloperments	6
16.	Reported Medication Variance Events	7
17.	Reported Adverse Drug Reactions	7
18.	Percent of Missing Documentation on Med-Administration.....	8
19.	Number of STAT Events and Individuals Involved	8
20.	Demographics and Length of Stay	9

- Appendix 1) Table – Census, Admissions & Discharges
- Appendix 2) Table – Key Performance Indicators
- Appendix 3) Table – Unusual Incident & Medication
- Appendix 4) Table – Restraint & Seclusion
- Appendix 5) Table – Major Incidents by Incident Location/Unit
- Appendix 6) Table – Demographic Information of Individuals in Care

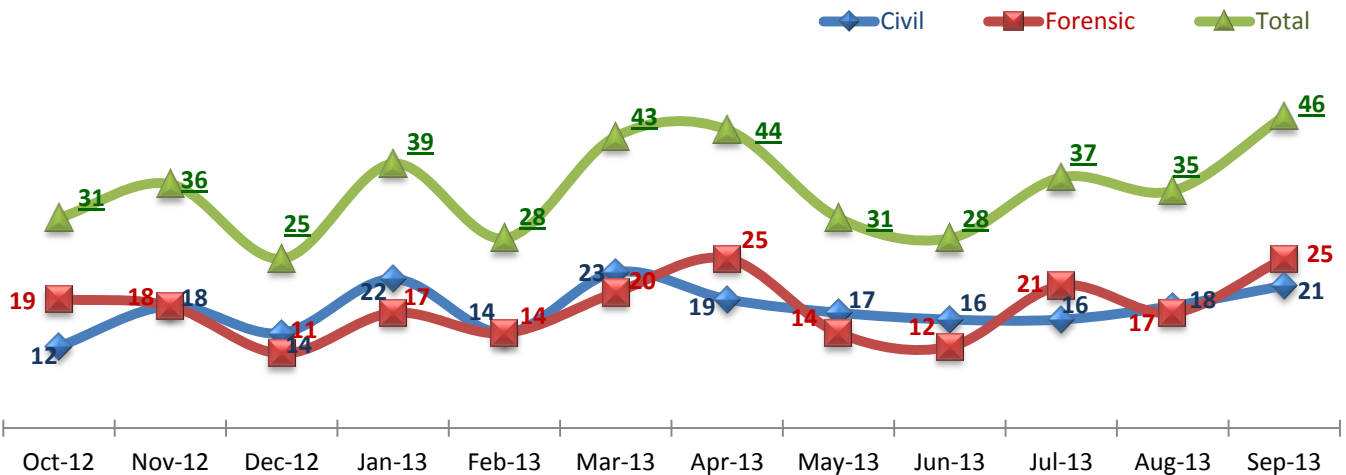
10/15/2013

Office of Statistics and Reporting (OSR)

Key Trends: Admission, Discharge, Transfer, Census, and Readmissions (1~5)

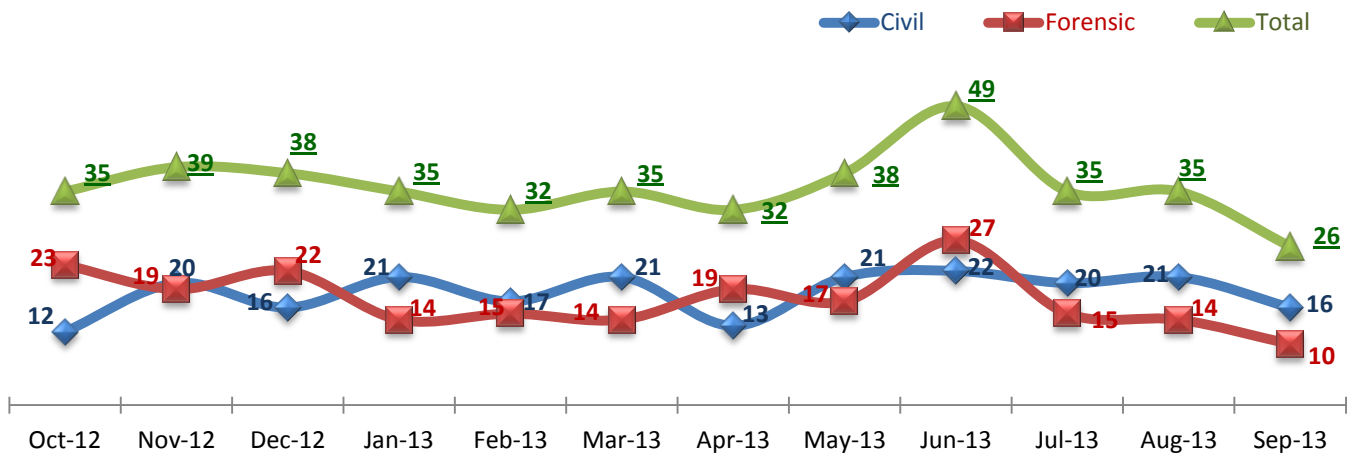
- In September 2013, admissions (particularly for forensic) increased to 46, which is the highest since July 2010 when we had 47 admissions, while September discharges (for both civil and forensic) declined to 26, the lowest level since August 2012. Despite that, the total number of discharges in FY2013 (429) exceeded the total number of admissions (423), which is higher than the previous year's admissions (400 in FY2012). This increase of admissions was triggered by civil admissions, which increased by 21% (174 in FY2012 and 210 in FY2013).
- Increased number of admissions and decreased number of discharges in September contributed to an increase of average daily census: 266 in September 2013.
- Likely medical transfers remained low at 10, which is the trend for the past three months.
- The current year-to-date 30-day readmission rate for FY2013 (5.8%) is higher than the previous year's (5.4%) but is still lower than NPR¹ (6.8%).

1. Admissions to SEH



* Number of admissions to SEH inpatient program, including transfers from outpatient to inpatient program.

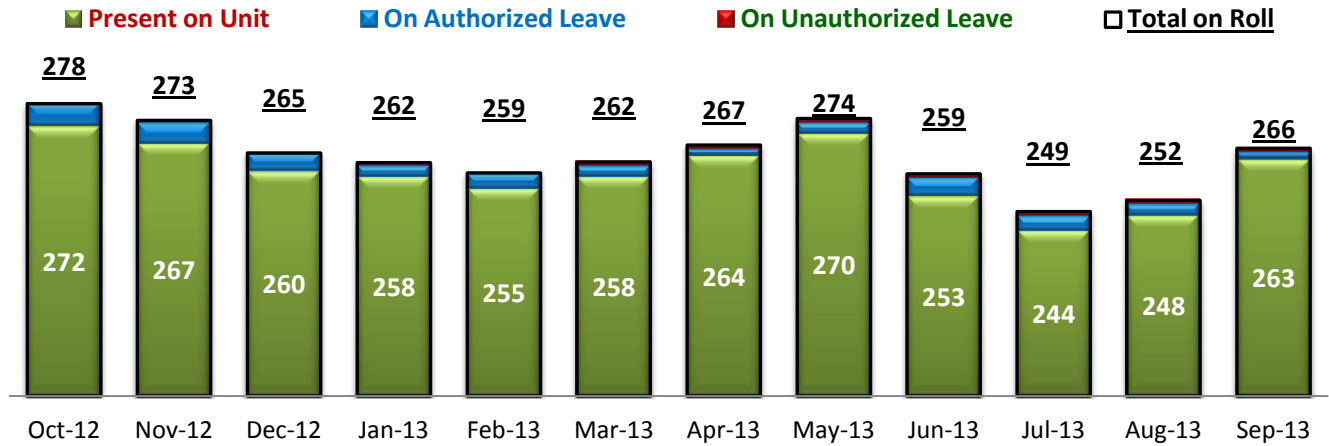
2. Discharges from SEH



* Number of discharges from SEH inpatient program, including transfers from inpatient to outpatient program.

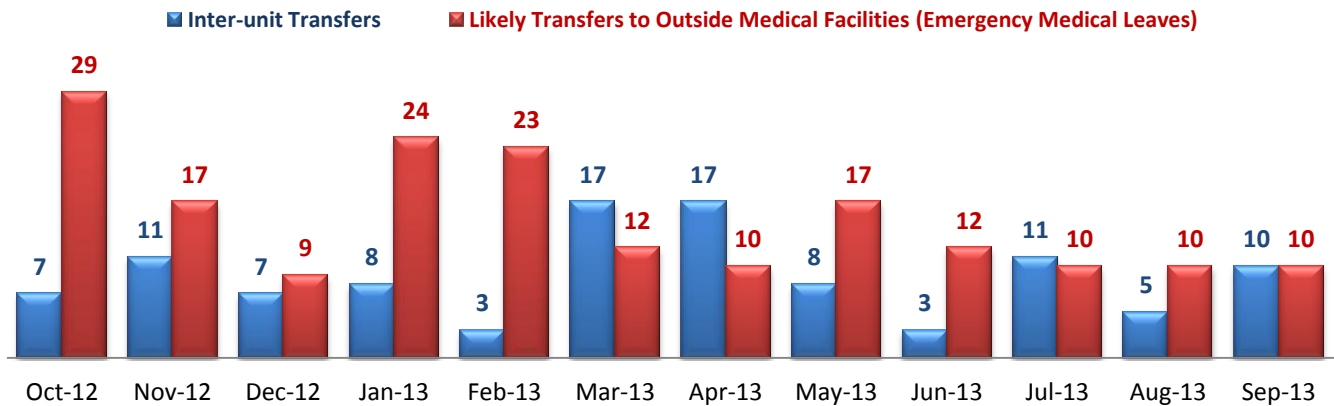
¹ NPR: National Public Rate as of Jun 2012 was published in January 2013 by National Association of State Mental Health Program Directors Research Institute (NRI), based on data collected from a number of state psychiatric hospitals nationwide.

3. Average Daily Census



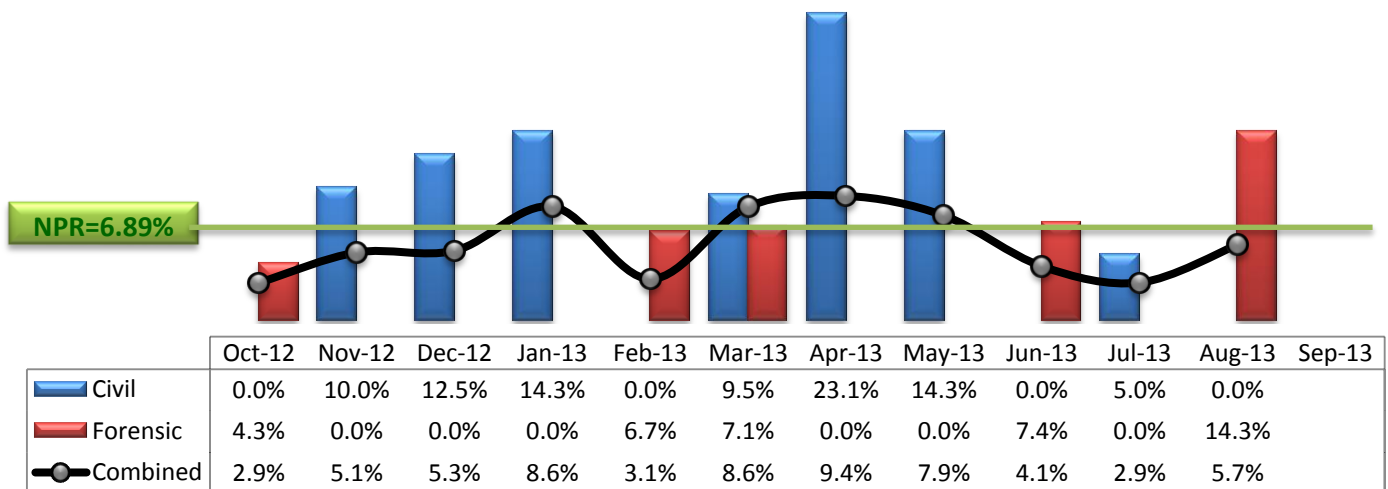
* Data above is the daily average number of individuals counted at 11:59 PM every day during each month.

4. Transfers



* Number of inter-unit transfers that occurred during month and number of emergency medical leaves that were initiated during month.

5. 30-Day Readmission Rate

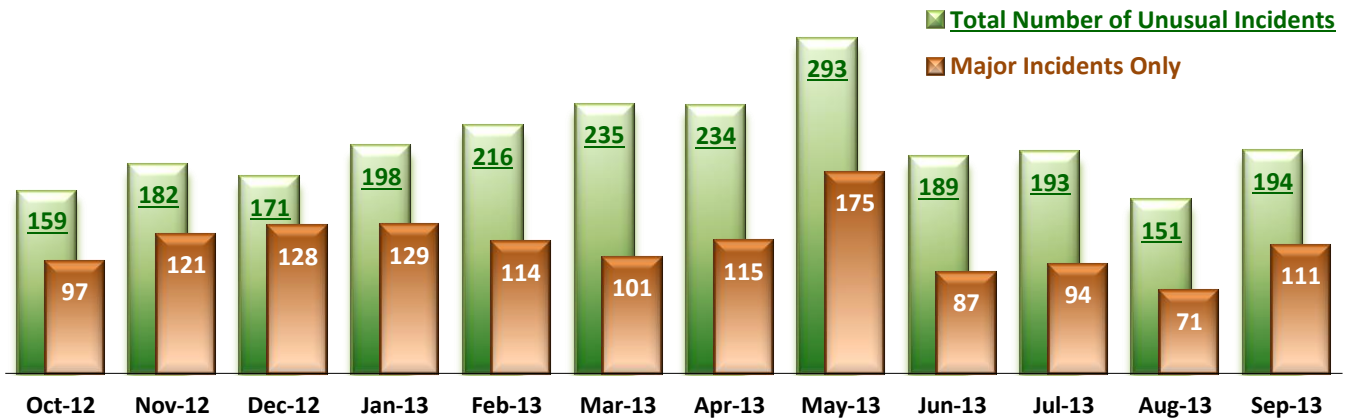


* Percent of discharges that returned to SEH within 30 days of discharges. It does not include those who may have been re-hospitalized at another psychiatric facility. This measure requires 30-day observation following discharge.

Key Trends: Unusual Incidents (6~15)

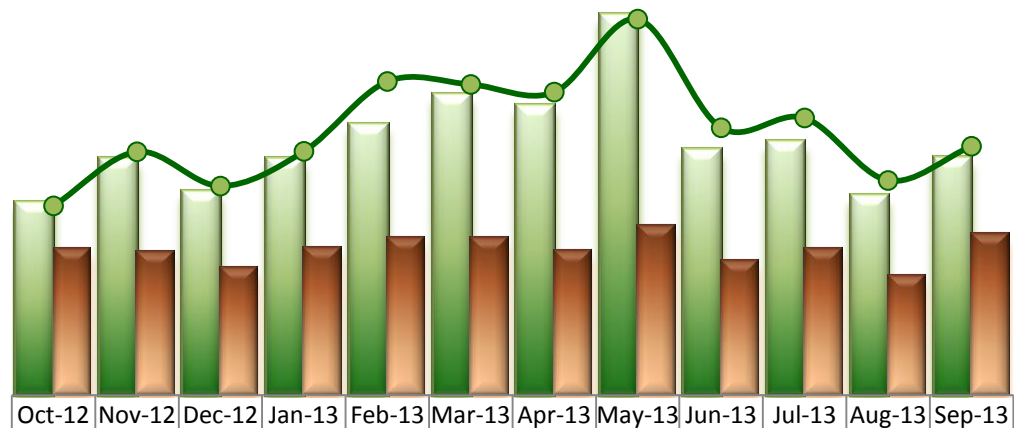
- The total number of unusual incidents (UIs) increased to 194 in September but still remained below 200. The increase of UIs in September may be due in part to an increase of admissions and census. The patient related UI rate that reflects census also slightly increased but is lower than that in June and July.
- In FY2013, the monthly average number of UIs is 201, which is higher than the average 190 in FY2012. A significant increase of admissions in FY2013 may be attributed to this increase of UIs as UIs are likely to involve recent admissions more frequently than those who have been in care for long term.
- During the month of May 2013, the Hospital was serving a few forensic individuals who were frequently involved in UIs, contributing to a huge spike in the May number of UIs, particularly violent incidents.
- The increase of UIs in September occurred largely at severe and medium level. Particularly, physical assaults declined in September but assault incidents at severe and medium level rather increased. In addition, psychiatric emergencies, falls, injuries, and elopements increased.
- Both seclusion and restraint rate/hours remained far below the national average (NPR) throughout the year.

6. Unusual Incidents



* Numbers above represent all types of the unusual incidents (UIs) that were reported to the Risk Manager by PRISM publication date, including those that did not involve any patients.

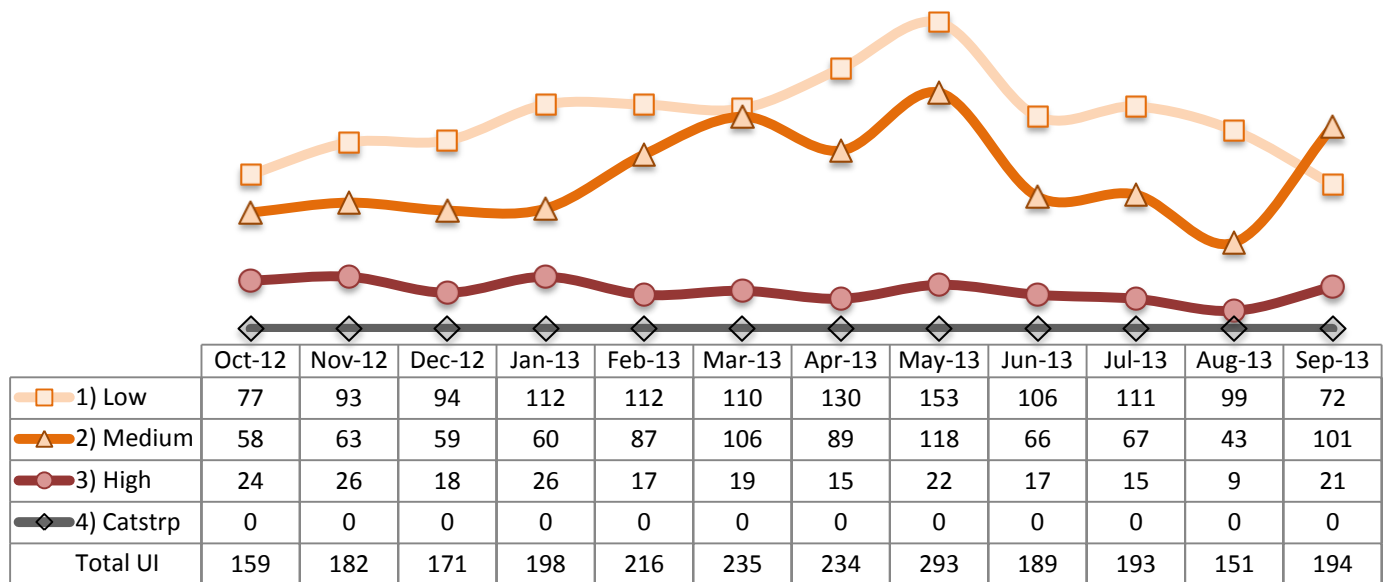
7. Patient-Involved Unusual Incidents



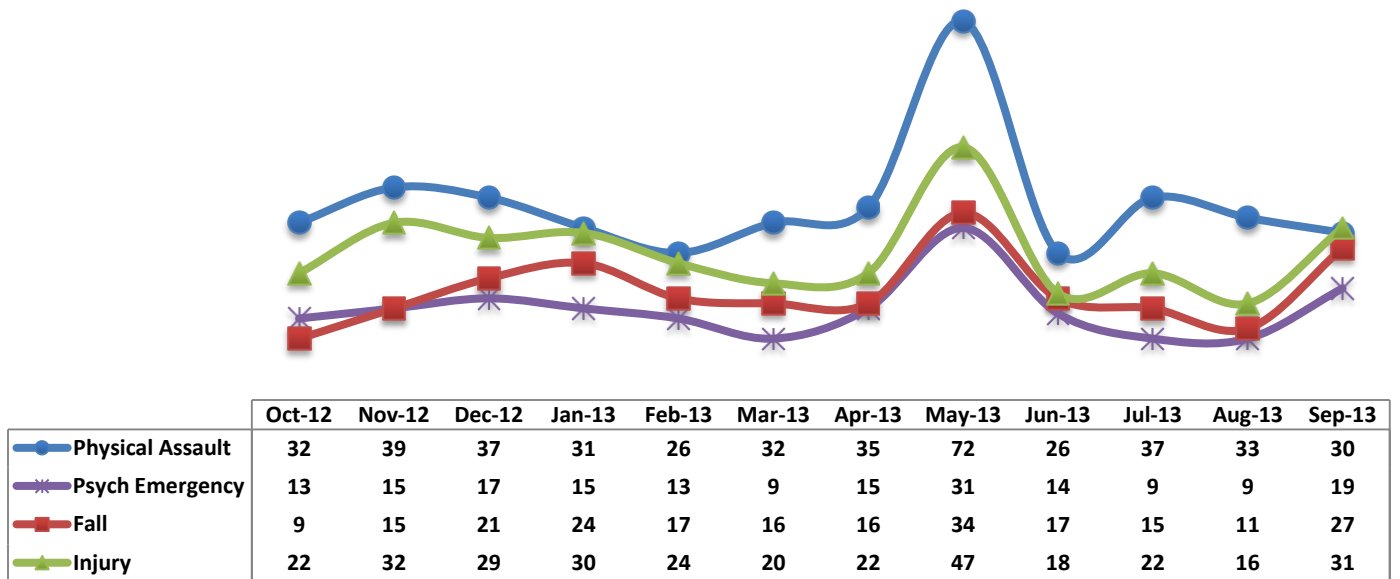
	Oct-12	Nov-12	Dec-12	Jan-13	Feb-13	Mar-13	Apr-13	May-13	Jun-13	Jul-13	Aug-13	Sep-13
# of Patient-Involved UIs	143	175	151	175	201	223	215	282	182	188	148	176
# of Unique Patients in UI	109	107	95	110	117	117	108	126	100	109	89	120
Patient Unusual Incident Rate	17.0	21.8	18.7	21.8	28.1	27.8	27.2	33.7	24.0	24.8	19.2	22.3

* The patient UI rate is the number of patient-involved unusual incidents reported for every 1000 inpatient days.

8. Unusual Incidents by Severity

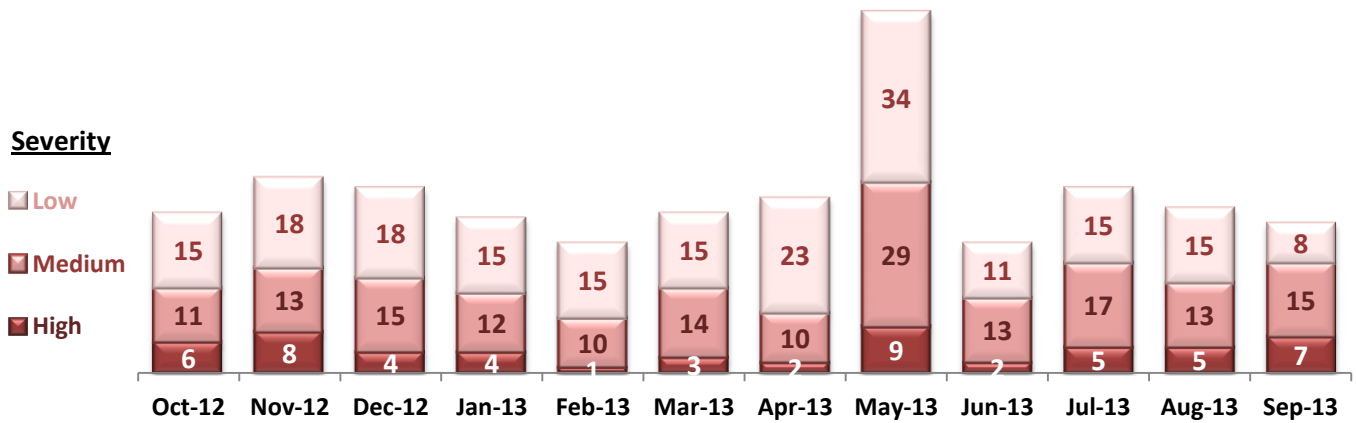


9. Selected Types of Incidents



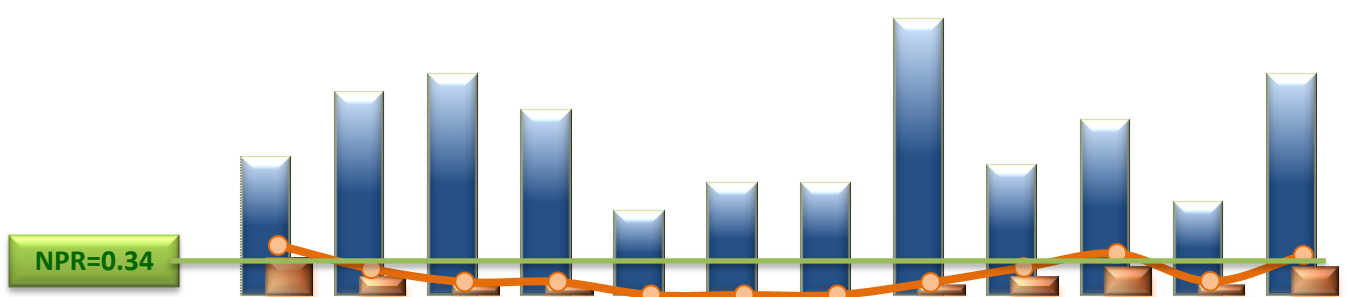
* These are incident types that are frequently reported. Some incidents may be counted in multiple categories. For example, a physical assault incident that accompanied psychiatric emergency and injury is counted under psychiatric emergency and injury as well as under physical assault. Injury is broadly defined to include any type of injuries regardless of the cause or severity level.

10. Physical Assaults by Severity



* Any physical assault that accompanies a code 13 or results in extensive injury needing off-unit treatment or transfer to ER is considered to be high severity, any physical assault that causes a minor injury that can be treated on unit is considered to be medium severity, and physical assault events that result in no injury are considered to be low severity.

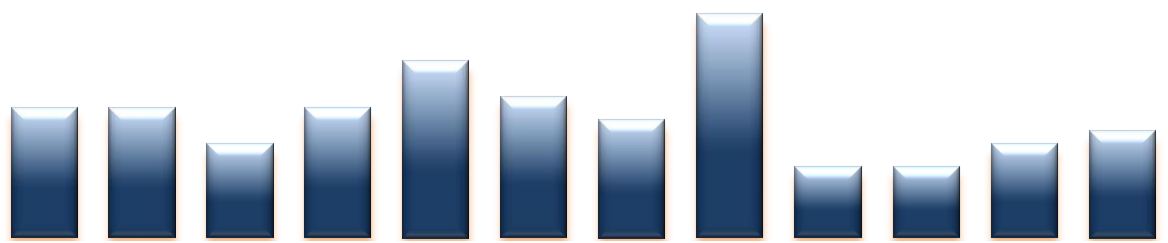
11. Patient Injuries



	Oct-12	Nov-12	Dec-12	Jan-13	Feb-13	Mar-13	Apr-13	May-13	Jun-13	Jul-13	Aug-13	Sep-13
Total Pts Injured	15	22	24	20	9	12	12	30	14	19	10	24
Major Pt Injuries*	4	2	1	1	0	0	0	1	2	3	1	3
Patient Injury Rate	0.47	0.25	0.12	0.12	0.00	0.00	0.00	0.12	0.26	0.40	0.13	0.38

* Injury is broadly defined to include any type of injuries regardless of the cause or severity level. The total number of patients injured represents all of the reported injuries including minor injuries treated with first aid alone. However, the patient injury rate considers only the number of patient injuries that required beyond first-aid level treatment based on the NRI definition and the patient injury rate is the number of 'major' patient injuries per every 1000 inpatient days

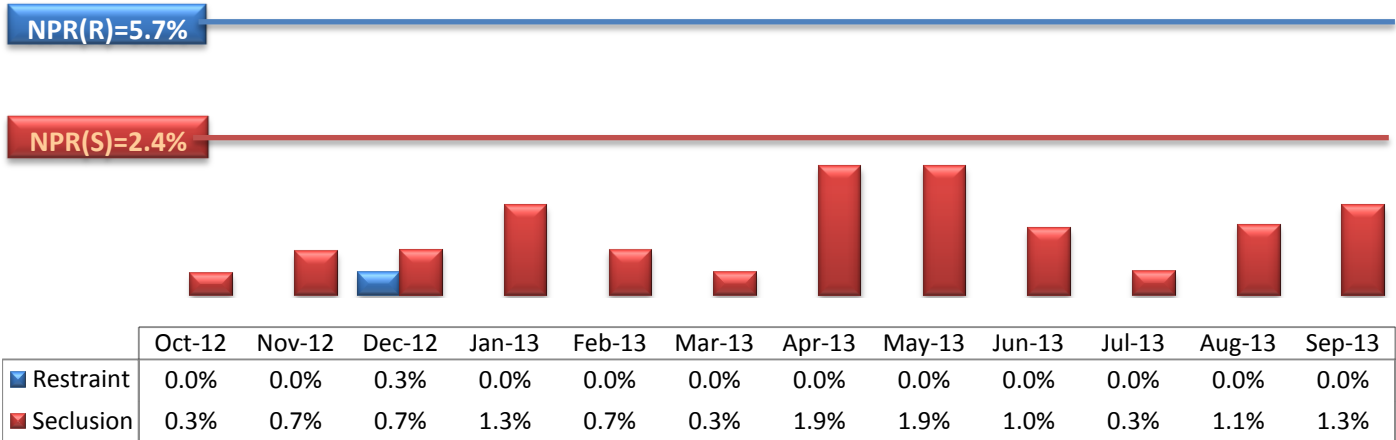
12. Staff Injuries



	Oct-12	Nov-12	Dec-12	Jan-13	Feb-13	Mar-13	Apr-13	May-13	Jun-13	Jul-13	Aug-13	Sep-13
# of Staff Injured	11	11	8	11	15	12	10	19	6	6	8	9

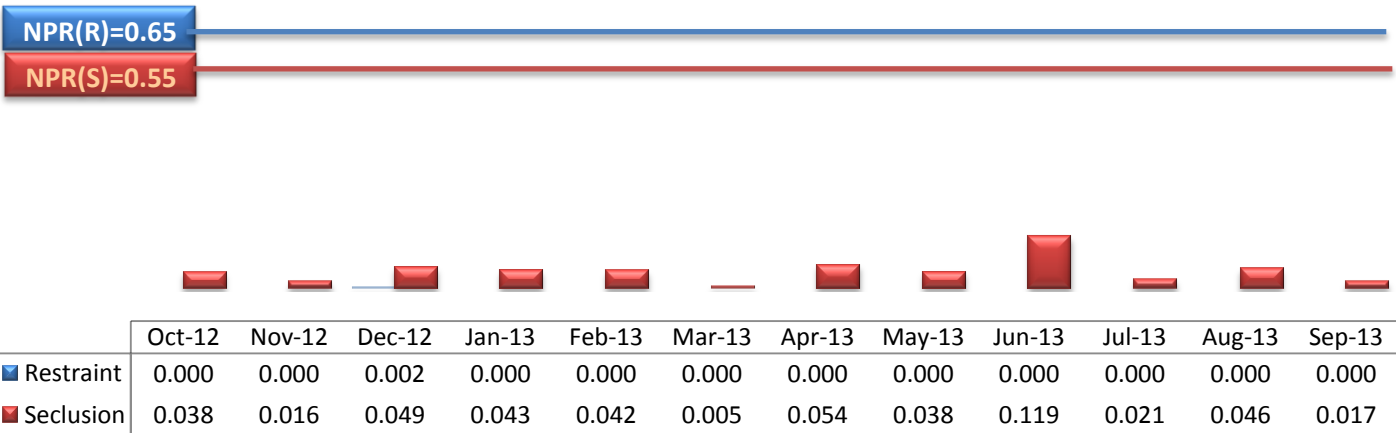
* Injury is broadly defined to include any type of injuries regardless of the cause or severity level. The total number of staff injured represents all of the reported staff injuries including minor injuries treated with first aid alone.

13. Percent of Patients Restrained or Secluded



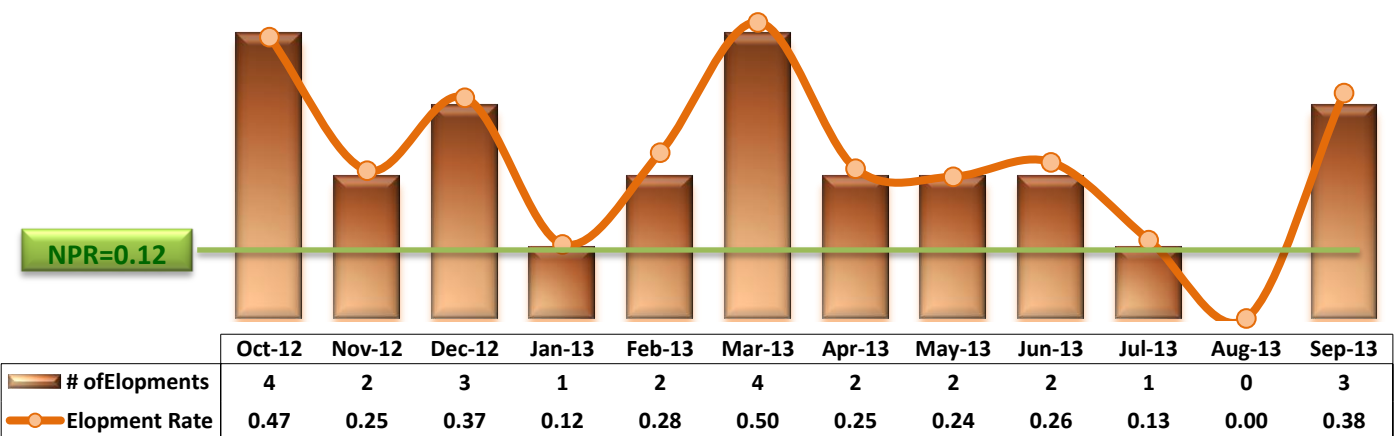
* Percent of unique patients who were restrained at least once and percent of unique patients who were secluded at least once. The denominator includes all individuals who were served in care >=1 day during month.

14. Restraint Hours Rate & Seclusion Hours Rate



* Restraint/Seclusion Hours Rate: Number of hours spent in restraint/seclusion for every 1000 inpatient hours.

15. Elopements

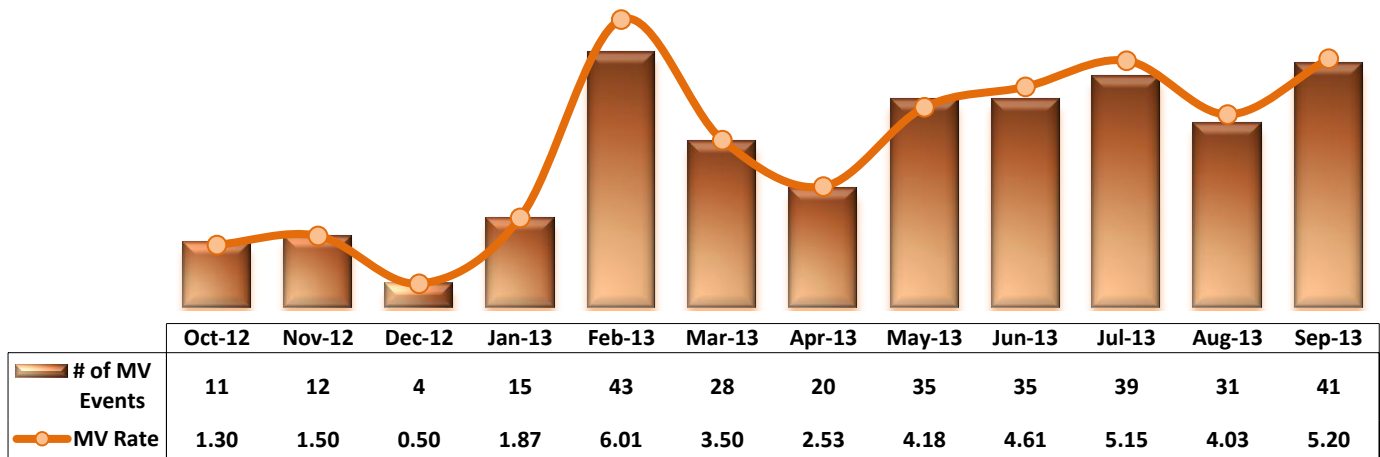


* It counts the total number of unauthorized leaves for any duration that were initiated during month and were recorded in Avatar. The elopement rate is the number of those unauthorized leaves that occurred for every 1000 inpatient days.

Key Trends: Medication Documentation, Medication Variance, ADR, and STAT (16~19)

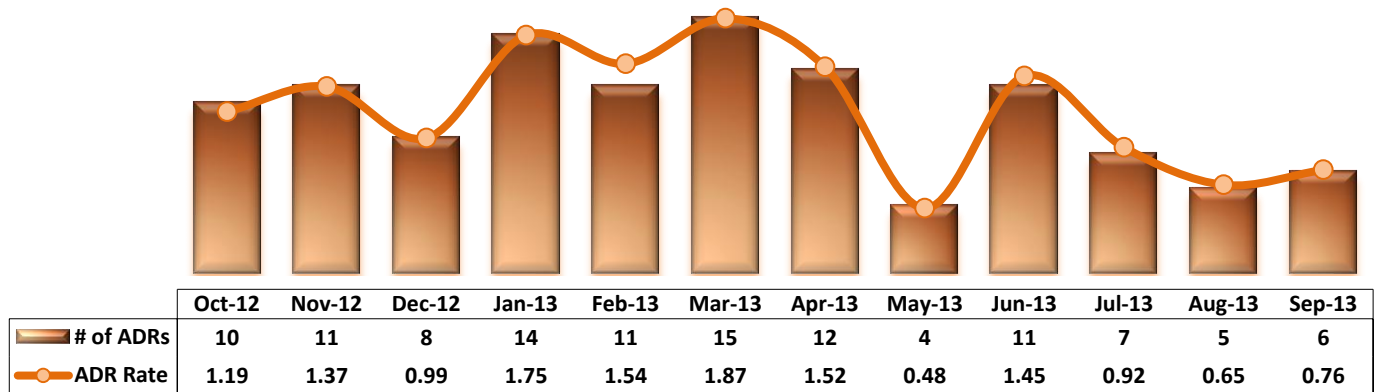
- The number of reported medication variance events has stayed at 30 or above since May 2013. Many of the medication variance incidents reported since May are related to inventory/dispensing discrepancies in Pyxis and IT system issues.
- The number of reported ADRs has remained below 10 since July.
- The performance on documentation of medication administration improved and the missing documentation rate decreased in August but it increased again in September.
- The number of STAT events remained low between June and August but increased in September when admissions and psychiatric emergency incidents increased.

16. Reported Medication Variance Events



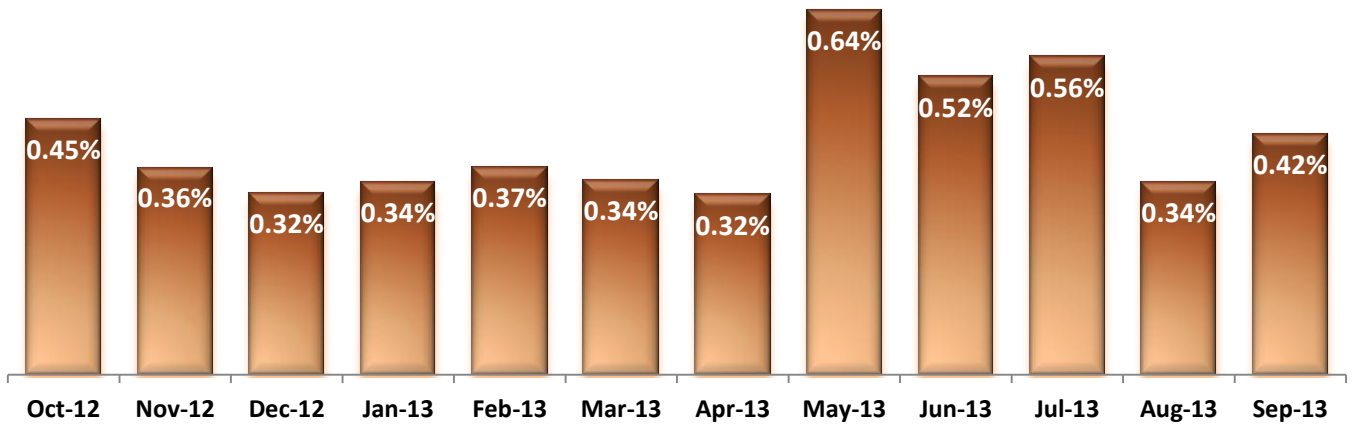
* MV Rate: Number of reported medication variance events that occurred for every 1000 inpatient days.

17. Reported Adverse Drug Reactions

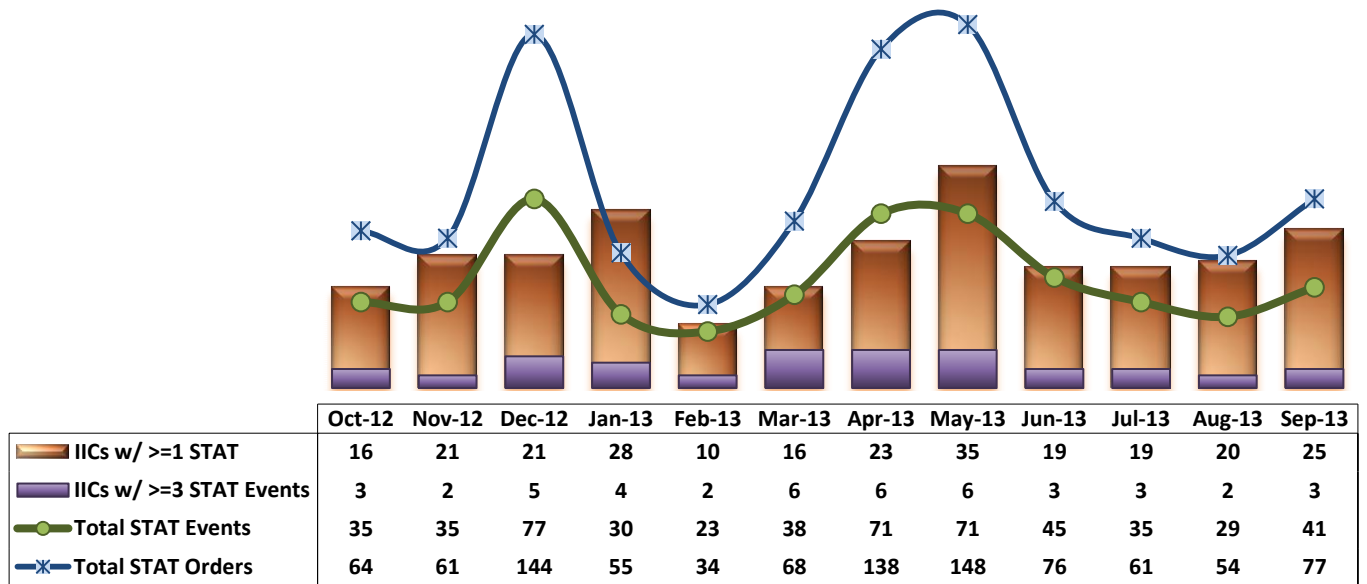


* ADR Rate: Number of reported adverse drug reaction events that occurred for every 1000 inpatient days.

18. Percent of Missing Documentation on Med-Administration



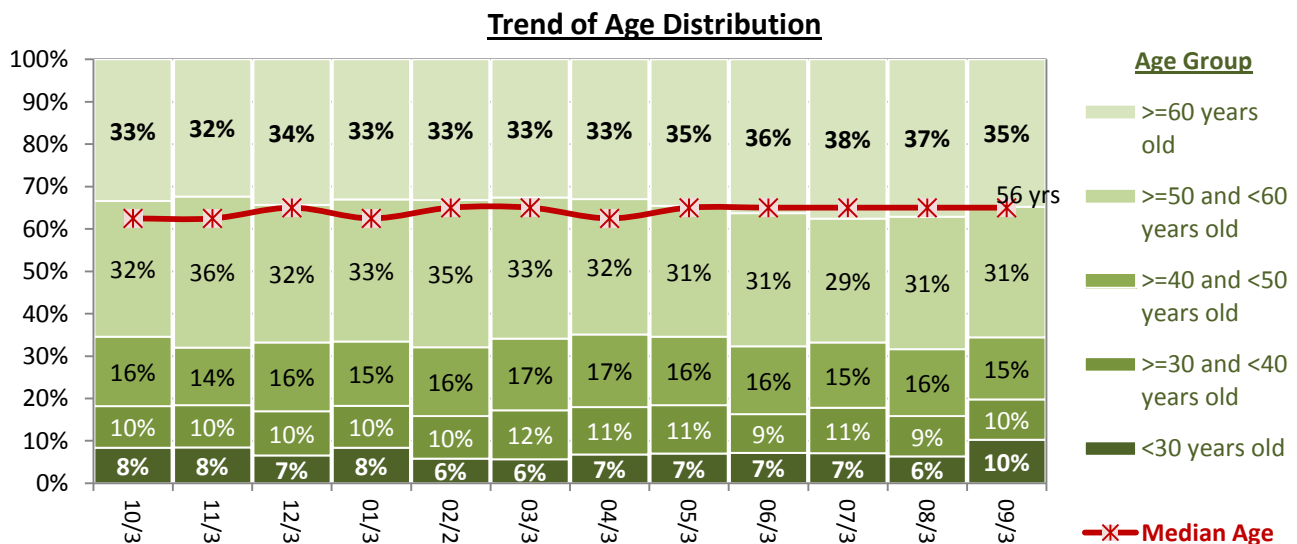
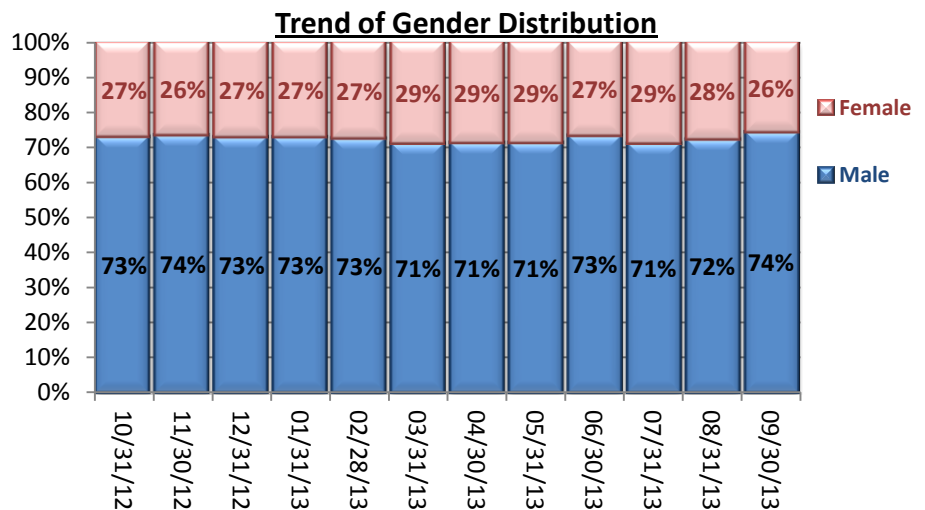
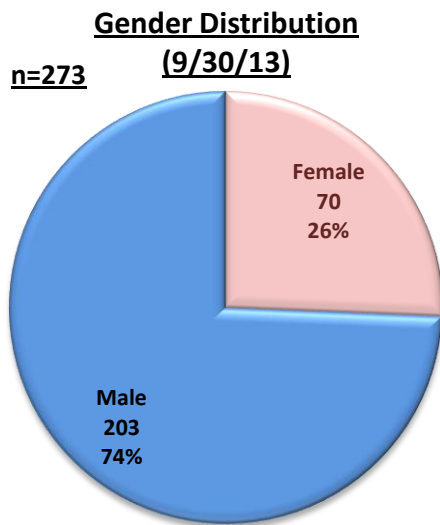
19. Number of STAT Events and Individuals Involved

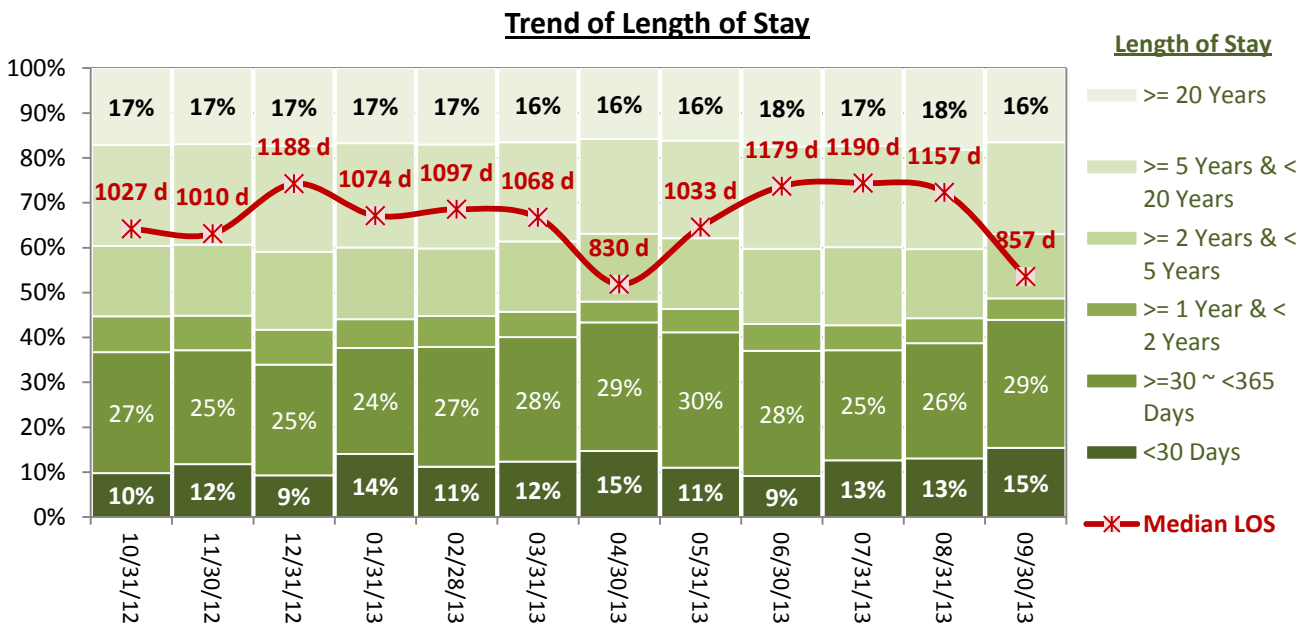
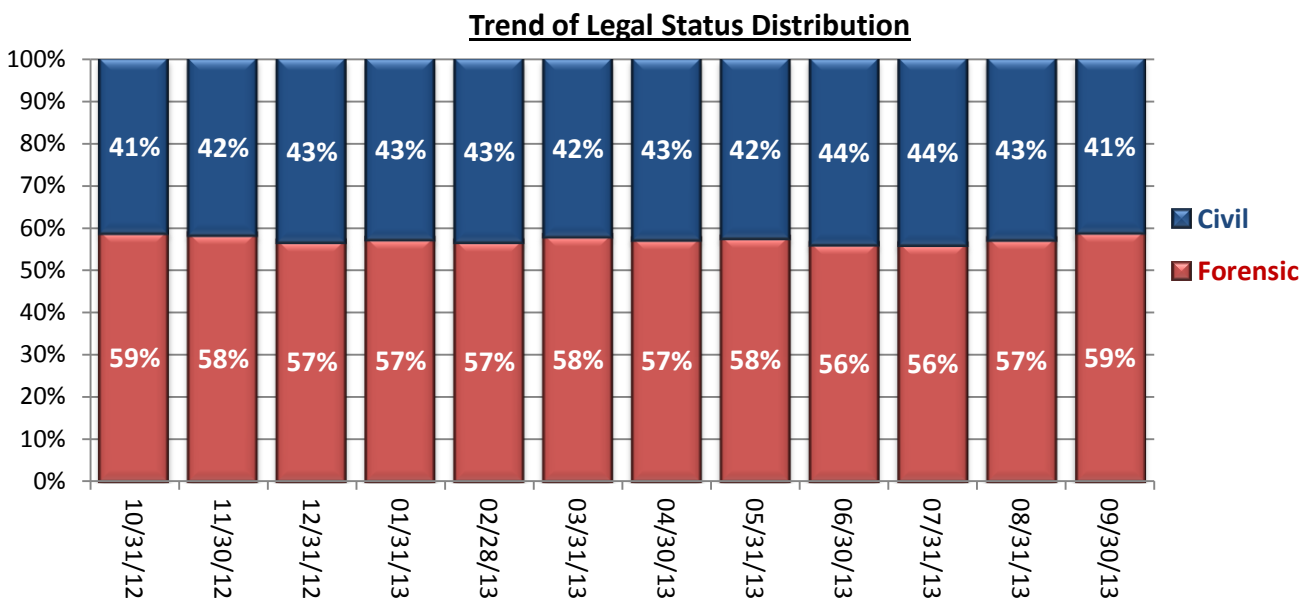
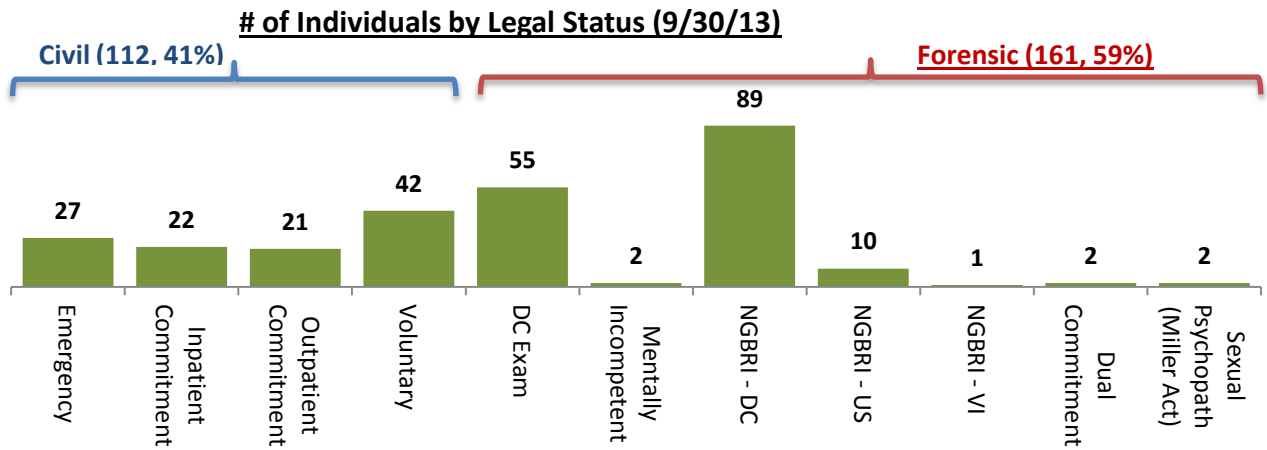


Key Trends: Demographics, Legal Status, and Length of Stay (20)

- It appeared the proportion of female individuals in care was gradually increasing throughout the year but declined to 26% in September 2013.
- The age distribution trend suggests that individuals in our care continue to age. The percentage of those 60 years or older gradually increased throughout the year, reaching above 37% in July and August. Although the proportion of older adults slightly declined in September, the median age continued to remain at 56 years old for the past several months.
- With increased forensic admissions in September, the proportion of individuals in a civil legal status at end of FY2013 slightly declined compared with the past couple of months.
- The median length of stay (LOS) for individuals in care was above 1150 days between June and August but declined significantly to 857 days as of September 30, 2013. It should be noted, however, this data is a snapshot on the last day of the month and this decrease is largely due to the increase of admissions in September. A similar pattern appeared around April when we experienced another spike of admissions.

20. Demographics and Length of Stay





Performance Related Information for Staff & Managers

1. Census, Admissions, Discharges & Transfers

Data Source: Avatar

Updated as of 10/10/13

Category	Oct-12	Nov-12	Dec-12	Jan-13	Feb-13	Mar-13	Apr-13	May-13	Jun-13	Jul-13	Aug-13	Sep-13	Monthly Average	Total (12mths)	Figure	
Admissions	Civil	12	18	14	22	14	23	19	17	16	16	18	21	18	210	Figure 1
	Forensic	19	18	11	17	14	20	25	14	12	21	17	25	18	213	
	Total	31	36	25	39	28	43	44	31	28	37	35	46	35	423	
Discharges	Civil	12	20	16	21	17	21	13	21	22	20	21	16	18	220	Figure 2
	Forensic	23	19	22	14	15	14	19	17	27	15	14	10	17	209	
	Total	35	39	38	35	32	35	32	38	49	35	35	26	36	429	
Net Gain During Month	Civil	0	-2	-2	1	-3	2	6	-4	-6	-4	-3	5		-10	
	Forensic	-4	-1	-11	3	-1	6	6	-3	-15	6	3	15		4	
	Total	-4	-3	-13	4	-4	8	12	-7	-21	2	0	20		-6	
All Individuals on Roll at End of Month	275	272	259	263	259	267	279	272	251	253	253	273	265			
a. Present on Unit	270	270	255	259	254	261	273	267	246	247	251	268	260			
b. On AL	5	2	4	4	4	5	4	4	3	5	1	3	4			
c. On UL	0	0	0	0	1	1	2	1	2	1	1	2	1			
All Individuals on Roll: Daily Average during Month*	278	273	265	262	259	262	267	274	259	249	252	266	264			
a. Present on Unit	272	267	260	258	255	258	264	270	253	244	248	263	260		Figure 3	
b. On AL	6	6	5	3	4	3	2	3	5	4	3	2	4			
c. On UL	0	0	0	1	0	1	1	1	1	1	1	1	0			
Patient Days**	8430	8024	8059	8010	7152	8011	7918	8370	7597	7569	7693	7891	7894	94724		
Inter-Unit Transfers during Month	7	11	7	8	3	17	17	8	3	11	5	10	9	107	Figure 4	
Medical Leaves Initiated during Month	Emergency	29	17	9	24	23	12	10	17	12	10	10	15	183		
Non-Emer	16	24	30	23	16	22	32	23	24	35	24	22	24	291		
Total	45	41	39	47	39	34	42	40	36	45	34	32	40	474		
Non-Medical Leaves Initiated during Month	95	104	96	85	85	70	89	80	92	88	96	97	90	1077		
UL Initiated during Month	4	2	3	1	2	4	2	2	2	1	0	3	2	26		
Total Unique Patients Served during Month	310	306	297	298	298	294	310	310	299	286	285	299	299			
30 Day Readmission***	Civil	0	2	2	3	0	2	3	3	0	1	0		1	16	
	Forensic	1	0	0	0	1	1	0	0	2	0	2		1	7	
	Total	1	2	2	3	1	3	3	3	2	1	2		2	23	

* This is the average number of individuals served on a given day for the respective month. Due to rounding from average calculation, numbers from its subcategories a, b, & c may not add up to the total number on this row.

** It counts the number of patients who are present on the unit and excludes those on authorized or unauthorized leave at 11:59pm on a given day.

*** Number of patients returning within 30 days of discharges that occurred during month.

Performance Related Information for Staff & Managers

2. Key Performance Indicators

Data Source: UI DB, ADR DB, Restraint/Seclusion Log, and Avatar

Updated as of 10/10/13

Category	Oct-12	Nov-12	Dec-12	Jan-13	Feb-13	Mar-13	Apr-13	May-13	Jun-13	Jul-13	Aug-13	Sep-13	Monthly Average	NPR* (Sep-11)	Figure
30 Day Readmit (Discharge Cohort)**	Civil	0.0%	10.0%	12.5%	14.3%	0.0%	9.5%	23.1%	14.3%	0.0%	5.0%	0.0%	7.9%		Figure 5
	Forensic	4.3%	0.0%	0.0%	0.0%	6.7%	7.1%	0.0%	0.0%	7.4%	0.0%	14.3%	3.7%		
	Combined	2.9%	5.1%	5.3%	8.6%	3.1%	8.6%	9.4%	7.9%	4.1%	2.9%	5.7%	5.8%	6.9%	
Number of Unusual Incidents	159	182	171	198	216	235	234	293	189	193	151	194	201		Figure 6
UI by Severity	Catastrophe	0	0	0	0	0	0	0	0	0	0	0	0		Figure 7
	High	24	26	18	26	17	19	15	22	17	15	9	21	19	
	Medium	58	63	59	60	87	106	89	118	66	67	43	101	76	
	Low	77	93	94	112	112	110	130	153	106	111	99	72	106	
Patient Unusual Incident Rate	17.0	21.8	18.7	21.8	28.1	27.8	27.2	33.7	24.0	24.8	19.2	22.3	23.8		Figure 8
Physical Assault Incident Rate	3.8	4.9	4.6	3.9	3.6	4.0	4.4	8.6	3.4	4.9	4.3	3.8	4.5		
Selected Types of Incidents	Physical Assault	32	39	37	31	26	32	35	72	26	37	33	30	36	Figure 9
	Psych Emergency	13	15	17	15	13	9	15	31	14	9	9	19	15	
	Fall	9	15	21	24	17	16	16	34	17	15	11	27	19	
	Injury	22	32	29	30	24	20	22	47	18	22	16	31	26	
Physical Assaults by Severity	High	6	8	4	4	1	3	2	9	2	5	5	7	5	Figure 10
	Medium	11	13	15	12	10	14	10	29	13	17	13	15	14	
	Low	15	18	18	15	15	15	23	34	11	15	15	8	17	
Patient Injury Rate***	0.47	0.25	0.12	0.12	0.00	0.00	0.00	0.12	0.26	0.40	0.13	0.38	0.19	0.34	Figure 11
Patients with Major Injuries***	4	2	1	1	0	0	0	1	2	3	1	3	2		
Total Patients Injured***	15	22	24	20	9	12	12	30	14	19	10	24	18		
Total Staff Injured***	11	11	8	11	15	12	10	19	6	6	8	9	11		Figure 12
Elopement Rate	0.47	0.25	0.37	0.12	0.28	0.50	0.25	0.24	0.26	0.13	0.00	0.38	0.34	0.12	Figure 13
Medication Variance Rate	1.30	1.50	0.50	1.87	6.01	3.50	2.53	4.18	4.61	5.15	4.03	5.20	3.31		Figure 14
Adverse Drug Reaction Rate	1.19	1.37	0.99	1.75	1.54	1.87	1.52	0.48	1.45	0.92	0.65	0.76	1.20		Figure 15
Missing Med-Admin Documentation	0.45%	0.36%	0.32%	0.34%	0.37%	0.34%	0.32%	0.64%	0.52%	0.56%	0.34%	0.42%	0.41%		Figure 16
Percent of Patients Restrained	0.0%	0.0%	0.3%	0.0%	0.0%	0.0%	0.0%	0.0%	0.0%	0.0%	0.0%	0.0%	0.0%	5.7%	Figure 18
Percent of Patients Secluded	0.3%	0.7%	0.7%	1.3%	0.7%	0.3%	1.9%	1.9%	1.0%	0.3%	1.1%	1.3%	1.0%	2.4%	
Restraint Hours Rate	0.000	0.000	0.002	0.000	0.000	0.000	0.000	0.000	0.000	0.000	0.000	0.000	0.000	0.65	Figure 19
Seclusion Hours Rate	0.038	0.016	0.049	0.043	0.042	0.005	0.054	0.038	0.119	0.021	0.046	0.017	0.040	0.55	

* National Public Rate, NASMHPD Research Institute, National Research Institute (NRI), Data as of June 2012, Published in January 2013.

** Percentage of patients returning within 30 days of discharges that occurred during month

*** Refer to the next page [UI & Medication]

**** As of September 2012, we are temporarily removing the emergency involuntary medication administration data from PRISM because we discovered a technical glitch in Avatar that made this data inaccurate. A fix is under way and this indicator will be reported again as reliable data becomes available.

Performance Related Information for Staff & Managers

3. Unusual Incident & Medication

Data Source: UI DB, ADR DB, and Avatar

Updated as of 10/10/13

Category	Oct-12	Nov-12	Dec-12	Jan-13	Feb-13	Mar-13	Apr-13	May-13	Jun-13	Jul-13	Aug-13	Sep-13	Monthly Average	Total (12mths)	NPR* (Sep-11)	
Total Unusual Incidents**	159	182	171	198	216	235	234	293	189	193	151	194	201	2415		
Total Major Unusual Incidents	97	121	128	129	114	101	115	175	87	94	71	111	112	1343		
Patient Involved UI Only**	143	175	151	175	201	223	215	282	182	188	148	176	188	2259		
<i>Patient UI Rate</i>	<i>17.0</i>	<i>21.8</i>	<i>18.7</i>	<i>21.8</i>	<i>28.1</i>	<i>27.8</i>	<i>27.2</i>	<i>33.7</i>	<i>24.0</i>	<i>24.8</i>	<i>19.2</i>	<i>22.3</i>	<i>23.8</i>			
Unique Patients Involved in UI**	109	107	95	110	117	117	108	126	100	109	89	120	109	1307		
Selected Types of Incidents	Physical Assault	32	39	37	31	26	32	35	26	37	33	30	36	430		
	Psych Emergency	13	15	17	15	13	9	15	14	9	9	19	15	179		
	Fall	9	15	21	24	17	16	16	34	17	15	11	27	19	222	
	Injury	22	32	29	30	24	20	22	47	18	22	16	31	26	313	
<i>Physical Assault Rate</i>	<i>3.8</i>	<i>4.9</i>	<i>4.6</i>	<i>3.9</i>	<i>3.6</i>	<i>4.0</i>	<i>4.4</i>	<i>8.6</i>	<i>3.4</i>	<i>4.9</i>	<i>4.3</i>	<i>3.8</i>	<i>4.5</i>			
UI by Severity	Catastrophe	0	0	0	0	0	0	0	0	0	0	0	0	0	0	
	High	24	26	18	26	17	19	15	22	17	15	21	19	229		
	Medium	58	63	59	60	87	106	89	118	66	67	43	101	76	917	
	Low	77	93	94	112	112	110	130	153	106	111	99	72	106	1269	
Physical Assaults by Severity	High	6	8	4	4	1	3	2	9	2	5	5	7	5	56	
	Medium	11	13	15	12	10	14	10	29	13	17	13	15	14	172	
	Low	15	18	18	15	15	15	23	34	11	15	15	8	17	202	
Total Patients Injured***	15	22	24	20	9	12	12	30	14	19	10	24	18	211		
Patients with Major Injuries***	4	2	1	1	0	0	0	1	2	3	1	3	2	18		
<i>Patient Injury Rate***</i>	<i>0.47</i>	<i>0.25</i>	<i>0.12</i>	<i>0.12</i>	<i>0.00</i>	<i>0.00</i>	<i>0.00</i>	<i>0.12</i>	<i>0.26</i>	<i>0.40</i>	<i>0.13</i>	<i>0.38</i>	<i>0.19</i>		<i>0.34</i>	
Total Staff Injured**	11	11	8	11	15	12	10	19	6	6	8	9	11			
Total UL Incident Reports	3	2	5	4	2	3	2	2	1	4	1	3	3	32		
Total ULs Documented in Avatar	4	2	3	1	2	4	2	2	2	1	0	3	2			
<i>Elopement Rate</i>	<i>0.47</i>	<i>0.25</i>	<i>0.37</i>	<i>0.12</i>	<i>0.28</i>	<i>0.50</i>	<i>0.25</i>	<i>0.24</i>	<i>0.26</i>	<i>0.13</i>	<i>0.00</i>	<i>0.38</i>	<i>0.34</i>		<i>0.12</i>	
Med Variance (MV) Reports**	11	12	4	15	43	28	20	35	35	39	31	41	26	314		
<i>MV Rate</i>	<i>1.30</i>	<i>1.50</i>	<i>0.50</i>	<i>1.87</i>	<i>6.01</i>	<i>3.50</i>	<i>2.53</i>	<i>4.18</i>	<i>4.61</i>	<i>5.15</i>	<i>4.03</i>	<i>5.20</i>	<i>3.31</i>			
Adverse Drug Reactions Reports	10	11	8	14	11	15	12	4	11	7	5	6	10	114		
<i>ADR Rate</i>	<i>1.19</i>	<i>1.37</i>	<i>0.99</i>	<i>1.75</i>	<i>1.54</i>	<i>1.87</i>	<i>1.52</i>	<i>0.48</i>	<i>1.45</i>	<i>0.92</i>	<i>0.65</i>	<i>0.76</i>	<i>1.20</i>			
Total Med Administrations Scheduled	112293	107901	111670	110726	97488	108150	103057	107694	102644	102303	102848	101049		1267823		
Total Missing Documentations	505	393	356	375	356	370	326	690	537	572	348	427		5255		
<i>Percent of Missing Documentation</i>	<i>0.45%</i>	<i>0.36%</i>	<i>0.32%</i>	<i>0.34%</i>	<i>0.37%</i>	<i>0.34%</i>	<i>0.32%</i>	<i>0.64%</i>	<i>0.52%</i>	<i>0.56%</i>	<i>0.34%</i>	<i>0.42%</i>		<i>0.41%</i>		
Total STAT Orders	64	61	144	55	34	68	138	148	76	61	54	77	82		Figure 17	
Total STAT Events****	35	35	77	30	23	38	71	71	45	35	29	41	44			
Total Individuals Involved >=1 STAT	16	21	21	28	10	16	23	35	19	19	20	25	21			
Total Patients with >=3 STAT Events	3	2	5	4	2	6	6	6	3	3	2	3	4			

* National Public Rate, NASMHPD Research Institute, National Research Institute (NRI), Data as of June 2012, Published in January 2013.

** Numbers may change if any additional UI report is made after the data run date from UI database (around the 15th of the following month).

*** Injury is broadly defined to include any type of injuries regardless of the cause or severity level. The total number of patients injured represents all of the reported injuries including minor injuries treated with first aid alone. However, the patient injury rate considers only the number of patient injuries that required beyond first-aid level treatment based on the NRI definition and the patient injury rate is the number of 'major' patient injuries per every 1000 inpatient days

**** One STAT event may involve more than one STAT order for the same patient. Any orders placed within 15 minute timeframe are considered to belong to one STAT event.

Performance Related Information for Staff & Managers

4. Restraint & Seclusion

Data Source: Restraint/Seclusion Log and UI DB (for # of total events and patients) and Avatar (for patient days/hours)

Updated as of 10/10/13

Category	Oct-12	Nov-12	Dec-12	Jan-13	Feb-13	Mar-13	Apr-13	May-13	Jun-13	Jul-13	Aug-13	Sep-13	Monthly Average	Total (12mths)	NPR* (Sep-11)
Number of Restraint Events	0	0	1	0	0	0	0	0	0	0	0	0	0.1	1	
Number of Unique Patients Restrained	0	0	1	0	0	0	0	0	0	0	0	0	0.1		
Percentage of Patients Restrained	0.0%	0.0%	0.3%	0.0%	0.0%	0.0%	0.0%	0.0%	0.0%	0.0%	0.0%	0.0%	0.0%		5.7%
Total Restraint Hours (h:mm)	0:00	0:00	0:20	0:00	0:00	0:00	0:00	0:00	0:00	0:00	0:00	0:00	0:01	0:20	
Restraint Hours Rate	0.000	0.000	0.002	0.000	0.000	0.000	0.000	0.000	0.000	0.000	0.000	0.000	0.000		0.65
Number of Seclusion Events	5	2	5	7	5	1	10	12	5	4	5	4	5.4	65	
Number of Unique Patients Secluded	1	2	2	4	2	1	6	6	3	1	3	4	2.9		
Percentage of Patients Secluded	0.3%	0.7%	0.7%	1.3%	0.7%	0.3%	1.9%	1.9%	1.0%	0.3%	1.1%	1.3%	1.0%		2.4%
Total Seclusion Hours (h:mm)	7:40	3:10	9:32	8:12	7:13	1:00	10:18	7:44	21:45	3:50	8:30	3:10	7:40	92:04	
Seclusion Hours Rate	0.038	0.016	0.049	0.043	0.042	0.005	0.054	0.038	0.119	0.021	0.046	0.017	0.040		0.55

* National Public Rate, NASMHPD Research Institute, National Research Institute (NRI), Data as of June 2012, Published in January 2013.

Performance Related Information for Staff & Managers

5. Major Incidents by Incident Location/Unit

Data Source: UI DB

Updated as of 10/10/13

Category		Oct-12	Nov-12	Dec-12	Jan-13	Feb-13	Mar-13	Apr-13	May-13	Jun-13	Jul-13	Aug-13	Sep-13	Monthly Average	Total (12mths)	Percent
Total Unusual Incidents		159	182	171	198	216	235	234	293	189	193	151	194	201	2415	
Total Major Incidents*		97	121	128	129	114	101	115	175	87	94	71	111	112	1343	100%
Major Incident Location	1A	11	4	7	7	4	9	5	11	4	10	12	10	8	94	7%
	1B	10	13	10	13	16	6	10	22	9	9	6	8	11	132	10%
	1C	8	9	11	17	6	8	13	8	4	11	4	10	9	109	8%
	1D	2	13	14	17	17	14	16	13	5	7	5	9	11	132	10%
	1E	15	8	18	15	10	20	32	30	12	8	3	19	16	190	14%
	1F	7	17	12	12	13	12	8	33	19	7	12	16	14	168	13%
	1G	12	20	9	7	4	1	5	8	10	13	4	3	8	96	7%
	2A	2	3	1	5	0	1	0	3	2	2	1	2	2	22	2%
	2B	1	7	8	2	1	1	4	1	3	1	0	3	3	32	2%
	2C	9	4	12	6	8	5	3	9	1	4	4	6	6	71	5%
	2D	6	8	10	7	10	2	7	14	10	6	1	6	7	87	6%
	TLC	6	4	9	8	15	14	7	18	7	9	13	12	10	122	9%
	Other	8	11	7	13	10	8	5	5	1	7	6	7	7	88	7%
	Total Physical Assault Incidents		32	39	37	31	26	32	35	72	26	37	33	30	36	430
Assault Incident Location	1A	5	1	2	1	1	2	2	3	0	2	6	1	2	26	6%
	1B	1	0	2	0	0	0	2	7	0	0	1	0	1	13	3%
	1C	2	4	1	3	1	1	5	5	0	5	3	3	3	33	8%
	1D	1	9	6	10	6	9	7	6	2	6	4	4	6	70	16%
	1E	4	2	8	6	2	8	4	8	3	4	2	6	5	57	13%
	1F	5	7	2	0	3	3	1	16	1	3	4	6	4	51	12%
	1G	4	6	2	2	0	1	1	2	6	7	1	1	3	33	8%
	2A	0	0	0	0	0	0	0	0	0	0	0	0	0	0	0%
	2B	0	2	3	0	1	0	1	0	0	1	0	0	1	8	2%
	2C	2	0	2	3	0	1	1	4	2	1	3	0	2	19	4%
	2D	5	5	8	4	4	1	6	9	8	2	0	2	5	54	13%
	TLC	2	2	1	2	8	6	4	11	4	6	8	6	5	60	14%
	Other	1	1	0	0	0	0	1	1	0	0	1	1	1	6	1%

Performance Related Information for Staff & Managers

5. Major Incidents by Incident Location/Unit

Data Source: UI DB

Updated as of 10/10/13

Category		Oct-12	Nov-12	Dec-12	Jan-13	Feb-13	Mar-13	Apr-13	May-13	Jun-13	Jul-13	Aug-13	Sep-13	Monthly Average	Total (12mths)	Percent
Total Fall Incidents		9	15	21	24	17	16	16	34	17	15	11	27	19	222	100%
Fall Incident Location	1A	1	3	4	3	0	3	1	8	3	2	4	3	3	35	16%
	1B	2	4	6	5	7	4	2	6	5	4	2	3	4	50	23%
	1C	1	1	1	1	1	0	1	1	1	3	0	3	1	14	6%
	1D	1	1	1	0	2	1	3	0	0	0	1	3	1	13	6%
	1E	0	1	1	1	0	2	1	1	1	0	1	4	1	12	5%
	1F	0	1	0	5	0	0	0	1	1	0	1	1	1	10	5%
	1G	1	1	0	0	0	0	2	0	1	0	0	0	0	5	2%
	2A	0	2	1	2	0	0	0	1	2	0	0	1	1	9	4%
	2B	0	0	4	0	1	0	1	1	1	1	0	0	2	10	5%
	2C	1	0	1	0	2	0	0	2	0	2	0	1	1	9	4%
	2D	0	0	1	1	1	0	0	5	2	0	1	2	1	13	6%
	TLC	0	1	0	2	2	5	3	7	1	0	0	3	2	24	11%
	Other	2	0	1	4	1	1	2	1	0	3	2	1	2	18	8%
Total Injury Incidents		22	32	29	30	24	20	22	47	18	22	16	31	26	313	100%
Injury Incident Location	1A	4	0	2	2	0	1	1	1	1	4	4	2	2	22	7%
	1B	2	3	3	0	4	2	2	6	2	1	1	3	2	29	9%
	1C	2	2	1	1	0	0	1	2	1	3	0	2	1	15	5%
	1D	1	6	6	8	8	6	4	4	1	4	3	6	5	57	18%
	1E	2	1	2	6	2	4	4	4	3	0	1	4	3	33	11%
	1F	2	8	2	0	2	1	1	9	2	2	3	4	3	36	12%
	1G	3	4	2	3	0	1	2	2	2	2	1	1	2	23	7%
	2A	0	1	0	1	0	0	0	2	0	0	0	1	0	5	2%
	2B	0	0	2	0	1	0	1	0	1	0	0	1	1	6	2%
	2C	1	3	2	0	1	1	0	3	0	2	1	1	1	15	5%
	2D	1	2	3	3	0	0	1	8	2	1	0	2	2	23	7%
	TLC	2	2	2	1	3	3	2	4	3	2	2	3	2	29	9%
	Other	2	0	2	5	3	1	3	2	0	1	0	1	2	20	6%

* Not every incident is a major incident. This counts only those incidents that were classified to be major based on the policy.

Performance Related Information for Staff & Managers

6. Demographic Information of Individuals in Care

Data Source: Avatar

Updated as of 10/10/13

Category	Sub-group	Oct-12	Nov-12	Dec-12	Jan-13	Feb-13	Mar-13	Apr-13	May-13	Jun-13	Jul-13	Aug-13	Sep-13	Monthly Average	Percent*
Total Active (on Roll) at End of Month*		275	272	259	263	259	267	279	272	251	253	253	273	265	
Gender	Female	74	72	70	71	71	77	80	78	67	73	70	70	73	27.5%
	Male	201	200	189	192	188	190	199	194	184	180	183	203	192	72.5%
Age	Median Age (Years)	55 yrs	55 yrs	56 yrs	55 yrs	56 yrs	56 yrs	55 yrs	56 yrs	56 yrs	56 yrs	56 yrs	56 yrs	56 yrs	
	<30 years old	23	23	17	22	15	15	19	19	18	18	16	28	19	7.3%
	>=30 and <40 years old	27	27	27	26	26	31	31	31	23	27	24	26	27	10.3%
	>=40 and <50 years old	45	37	42	40	42	45	48	44	40	39	40	40	42	15.8%
	>=50 and <60 years old	88	97	84	88	90	89	89	84	79	74	79	84	85	32.3%
	>=60 years old	92	88	89	87	86	87	92	94	91	95	94	95	91	34.3%
Legal Status of Individuals on Roll at End of Month	Emergency	21	19	21	20	19	22	29	31	27	19	18	27	23	8.6%
	Inpatient Commitment	23	23	21	21	21	23	21	21	21	23	20	22	22	8.2%
	Outpatient Commitment	23	21	24	23	26	23	24	18	18	19	24	21	22	8.3%
	Voluntary	46	50	46	48	46	44	45	45	44	50	46	42	46	17.4%
	Civil Sub-total	113	113	112	112	112	112	119	115	110	111	108	112	112	42.5%
	DC Exam	55	50	39	44	38	48	54	50	38	38	41	55	46	17.3%
	Mentally Incompetent	3	3	3	5	5	4	1	1	1	1	2	2	3	1.0%
	NGBRI - DC	91	93	92	90	92	89	90	91	87	89	88	89	90	34.0%
	NGBRI - US	9	9	9	8	8	10	10	10	10	9	9	10	9	3.5%
	NGBRI - VI	1	1	1	1	1	1	1	1	1	1	1	1	1	0.4%
Dual Commitment	1	1	1	1	1	1	2	2	2	2	2	2	2	0.6%	
Sexual Psychopath (Miller Ac	2	2	2	2	2	2	2	2	2	2	2	2	2	0.8%	
Forensic Sub-total	162	159	147	151	147	155	160	157	141	142	145	161	152	57.5%	
Length of Stay	Median LOS (Days)	1027 d	1010 d	1188 d	1074 d	1097 d	1068 d	830 d	1033 d	1179 d	1190 d	1157 d	857 d	1059 d	
	Average LOS (Days)	3093 d	3103 d	3248 d	3152 d	3181 d	3093 d	2973 d	3065 d	3294 d	3217 d	3207 d	2963 d	3132 d	
	<30 Days	27	32	24	37	29	33	41	30	23	32	33	42	32	12.1%
	>=30 ~ <365 Days	74	69	64	62	69	74	80	82	70	62	65	78	71	26.7%
	>= 1 Year & < 2 Years	22	21	20	17	18	15	13	14	15	14	14	13	16	6.2%
	>= 2 Years & < 5 Years	43	43	45	42	39	42	42	43	42	44	39	39	42	15.8%
	>= 5 Years & < 20 Years	62	61	61	61	60	59	59	59	57	57	56	56	59	22.3%
	>= 20 Years	47	46	45	44	44	44	44	44	44	44	46	45	45	16.9%

* Counts the total number of individuals who are on the hospital roll at end of each month. This number serves as denominator to calculate percentage of each group.