

**Government of the District of Columbia
Department of Mental Health (DMH)**



Performance Related Information for Staff and Managers

PRISM

AUGUST 2013

Table of Contents



1.	Admissions to SEH	1
2.	Discharges from SEH.....	1
3.	Average Daily Census	2
4.	Transfers	2
5.	30-Day Readmission Rate	2
6.	Unusual Incidents.....	3
7.	Patient-Involved Unusual Incidents.....	3
8.	Unusual Incidents by Severity	4
9.	Selected Types of Incidents	4
10.	Physical Assaults by Severity	5
11.	Patient Injuries	5
12.	Staff Injuries	5
13.	Percent of Patients Restrained or Secluded.....	6
14.	Restraint Hours Rate & Seclusion Hours Rate	6
15.	Elopements	6
16.	Reported Medication Variance Events	7
17.	Reported Adverse Drug Reactions	7
18.	Percent of Missing Documentation on Med-Administration.....	8
19.	Number of STAT Events and Individuals Involved	8
20.	Demographics and Length of Stay	9
<input type="checkbox"/>	Appendix 1) Table – Census, Admissions & Discharges	
<input type="checkbox"/>	Appendix 2) Table – Key Performance Indicators	
<input type="checkbox"/>	Appendix 3) Table – Unusual Incident & Medication	
<input type="checkbox"/>	Appendix 4) Table – Restraint & Seclusion	
<input type="checkbox"/>	Appendix 5) Table – Major Incidents by Incident Location/Unit	
<input type="checkbox"/>	Appendix 6) Table – Demographic Information of Individuals in Care	

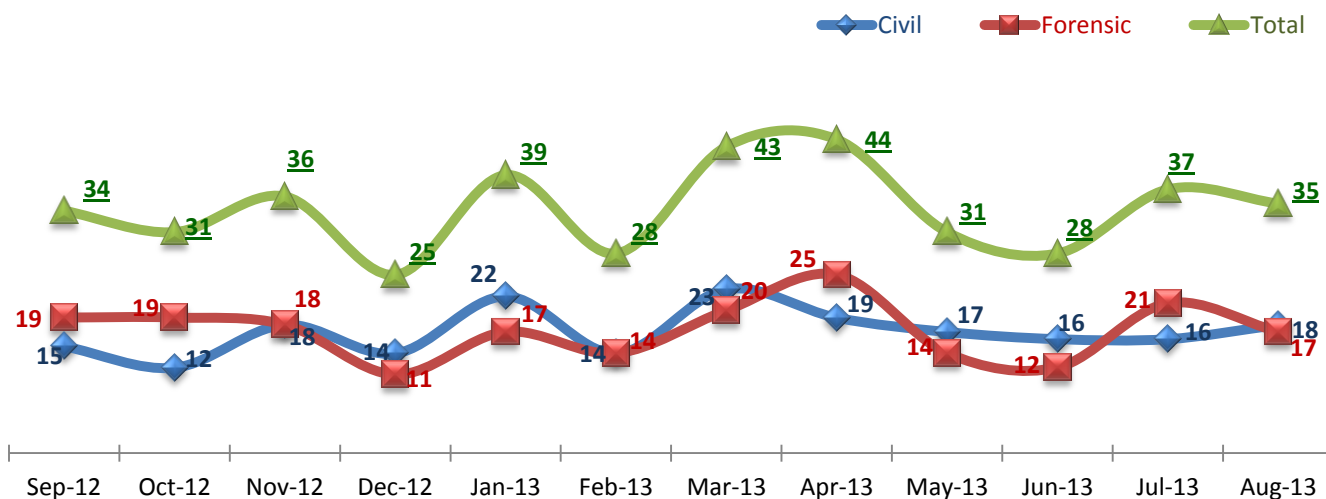
09/12/2013

Office of Statistics and Reporting (OSR)

Key Trends: Admission, Discharge, Transfer, Census, and Readmissions (1~5)

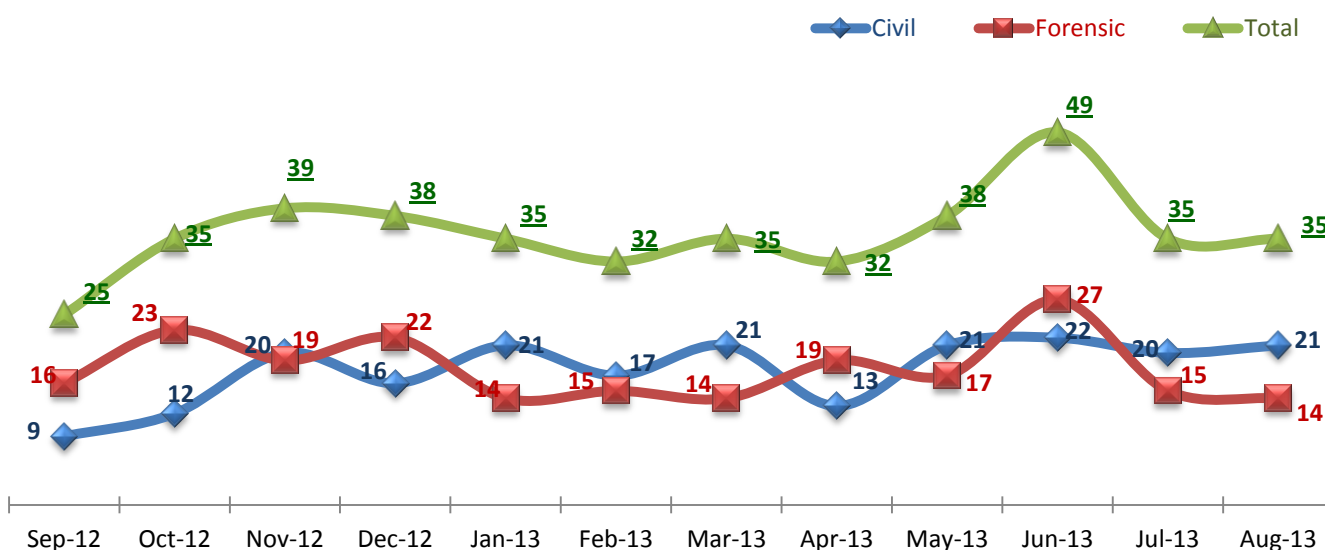
- The volume of admissions and discharges in August 2013 remained similar to July.
- Forensic and civil discharges remained similar to July discharges.
- The average daily census slightly increased but continues below 260 since June 2013.
- Likely medical transfers (emergency medical leaves) have declined since May, reaching 10 in August.
- 30-day readmissions have declined since May.

1. Admissions to SEH



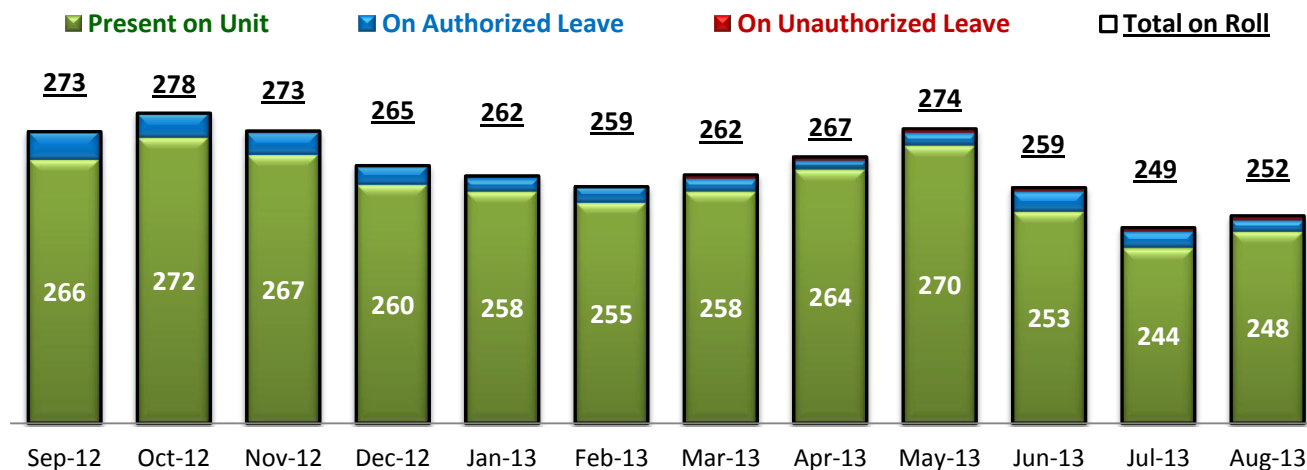
* Number of admissions to SEH inpatient program, including transfers from outpatient to inpatient program.

2. Discharges from SEH



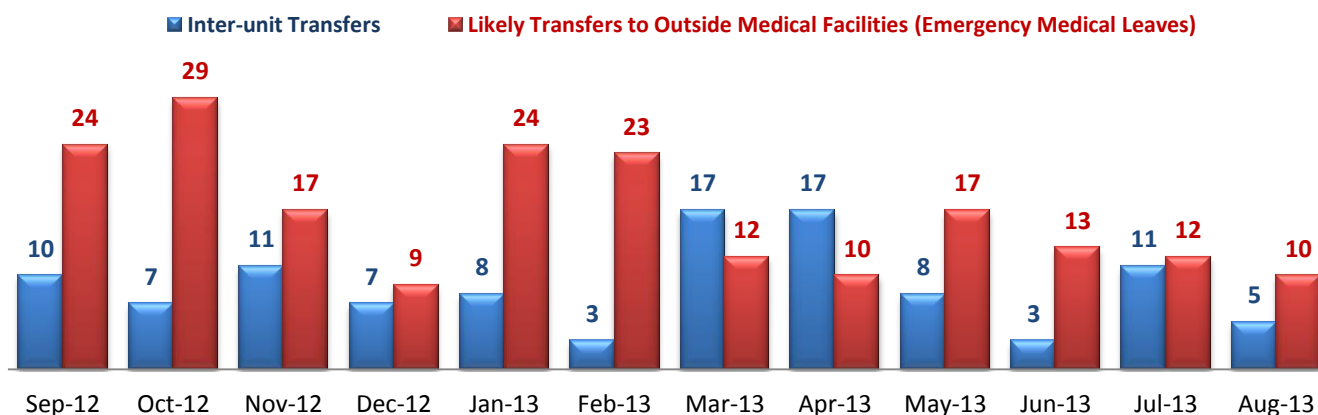
* Number of discharges from SEH inpatient program, including transfers from inpatient to outpatient program.

3. Average Daily Census



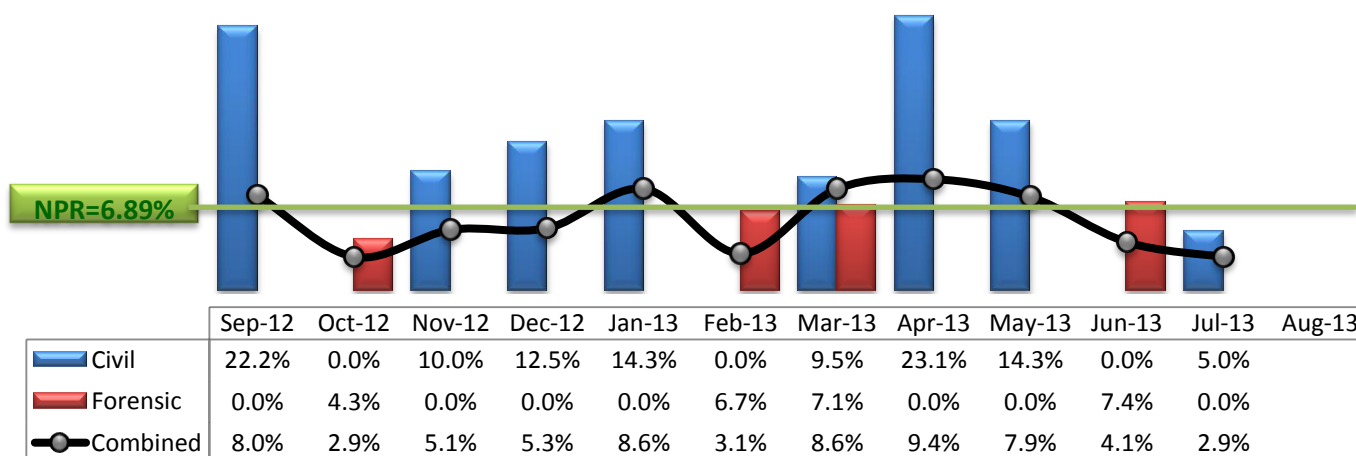
* Data above is the daily average number of individuals counted at 11:59 PM every day during each month.

4. Transfers



* Number of inter-unit transfers that occurred during month and number of emergency medical leaves that were initiated during month.

5. 30-Day Readmission Rate



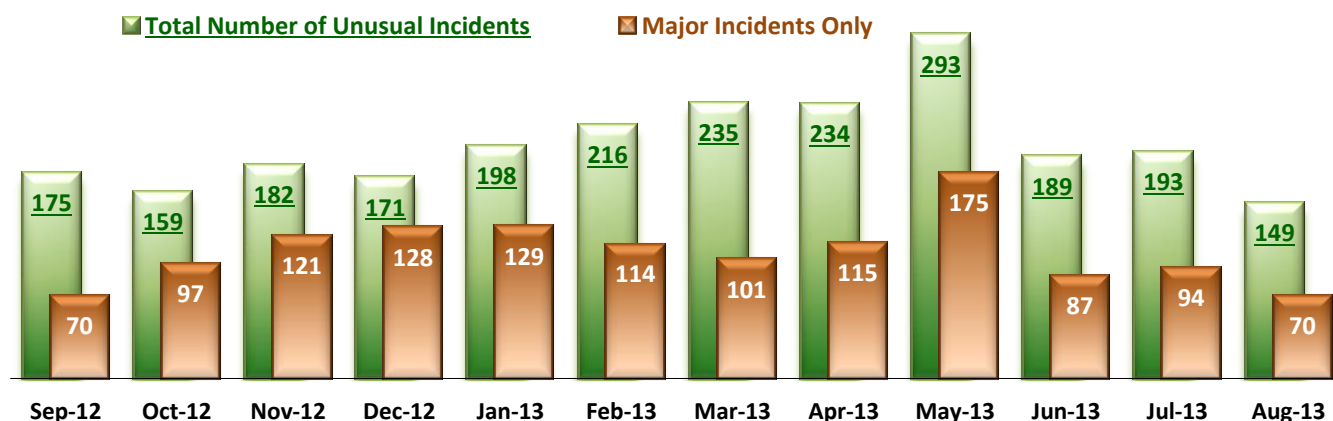
* Percent of discharges that returned to SEH within 30 days of discharges. It does not include those who may have been re-hospitalized at another psychiatric facility. This measure requires 30-day observation following discharge.

** NPR: National Public Rate as of June 2012 published by NASMHPD Research Institute in January 2013.

Key Trends: Unusual Incidents (6~15)

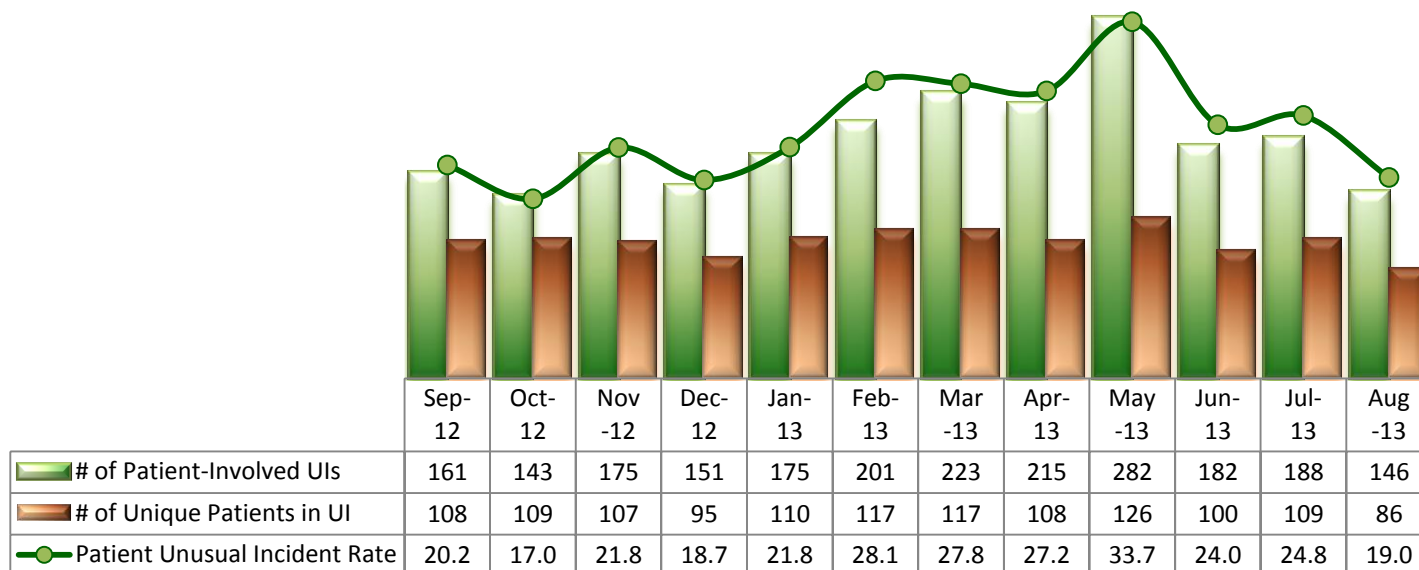
- The total number of unusual incidents (UIs) has remained below 200 since June 2013 and significantly dropped in August to 149, of which only 70 were major UIs. Patient related UIs also dropped and so did the number of unique individuals in care involved in more than one UI.
- During the month of May 2013, the Hospital was serving a few forensic individuals who were frequently involved in UIs, contributing to a huge spike in the number of UIs, particularly violent incidents, in May.
- The decline of UIs in August appears at all severity levels; severe and medium level of UIs declined by nearly 40% from July to August.
- In August, physical assaults, falls, and injuries declined.
- In August, patient injuries, including major injuries, declined while the number of employees injured slightly increased but remained below 10.
- Both seclusion and restraint rate/hours remained far below the national average (NPR).
- No elopement was reported in August.

6. Unusual Incidents



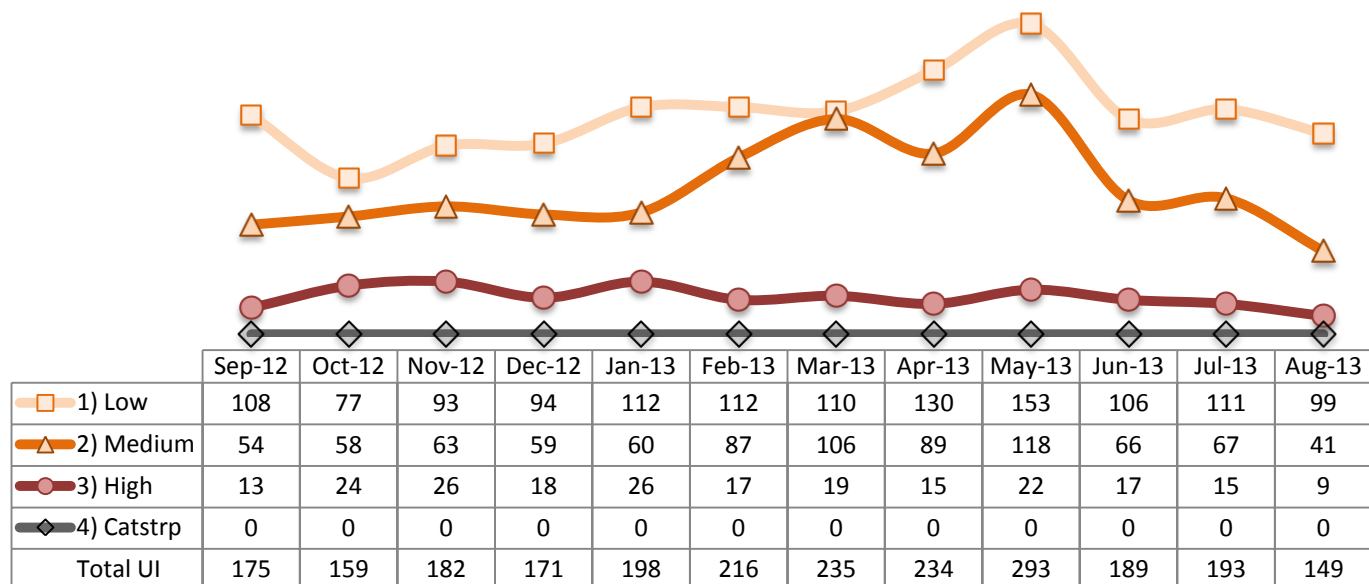
* Numbers above represent all types of the unusual incidents (UIs) that were reported to the Risk Manager by PRISM publication date, including those that did not involve any patients.

7. Patient-Involved Unusual Incidents

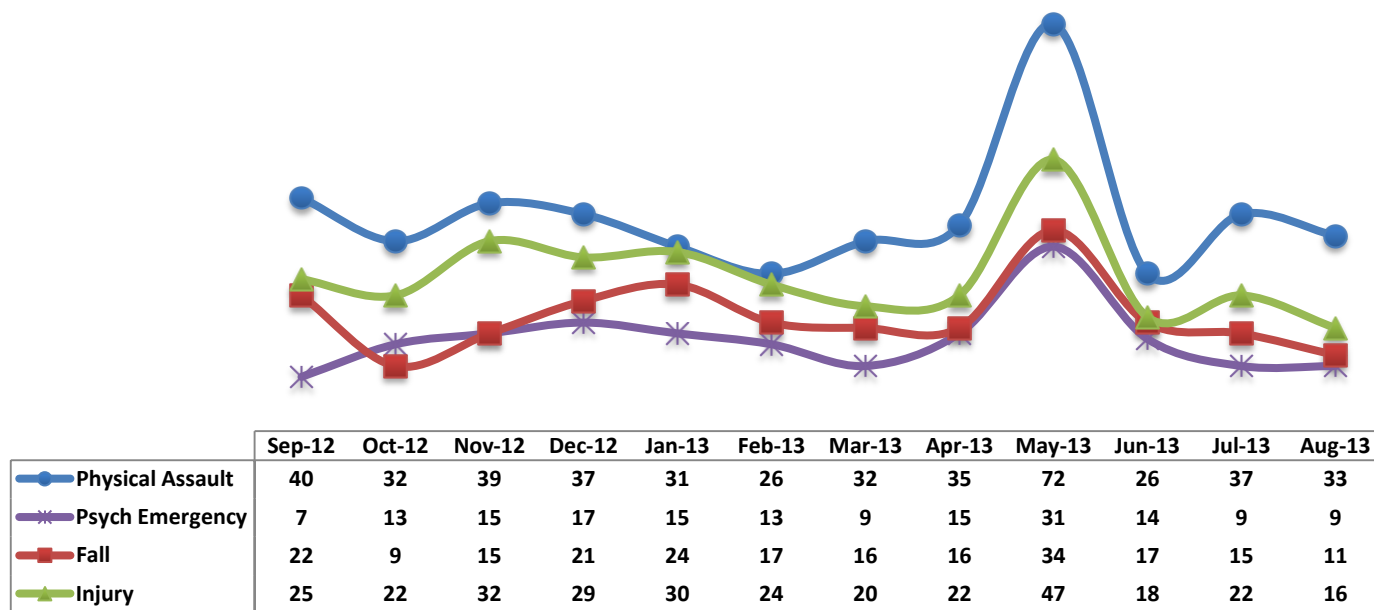


* The patient UI rate is the number of patient-involved unusual incidents reported for every 1000 inpatient days.

8. Unusual Incidents by Severity



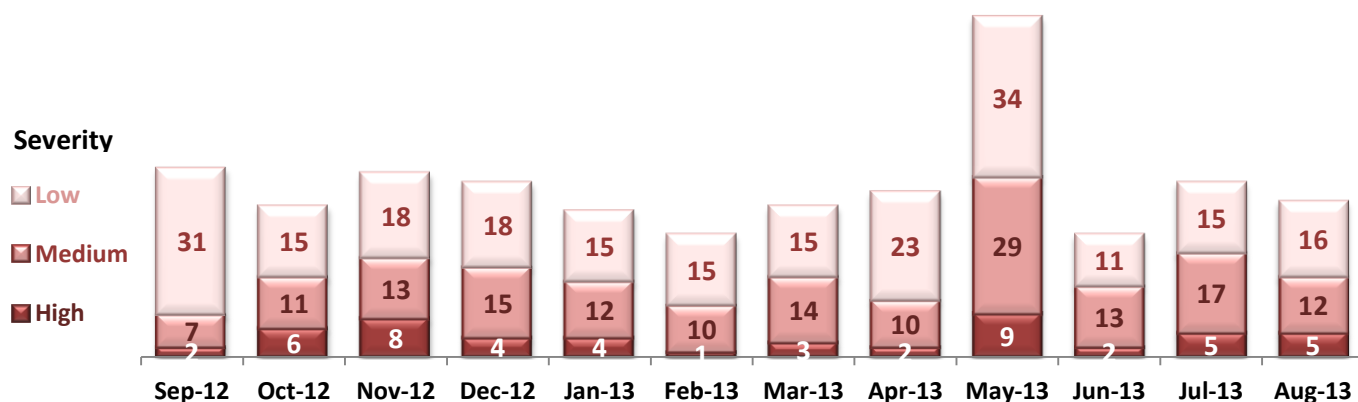
9. Selected Types of Incidents



* These are incident types that are frequently reported. Some incidents may be counted in multiple categories. For example, a physical assault incident that accompanied psychiatric emergency and injury is counted under psychiatric emergency and injury as well as under physical assault. Injury is broadly defined to include any type of injuries regardless of the cause or severity level.

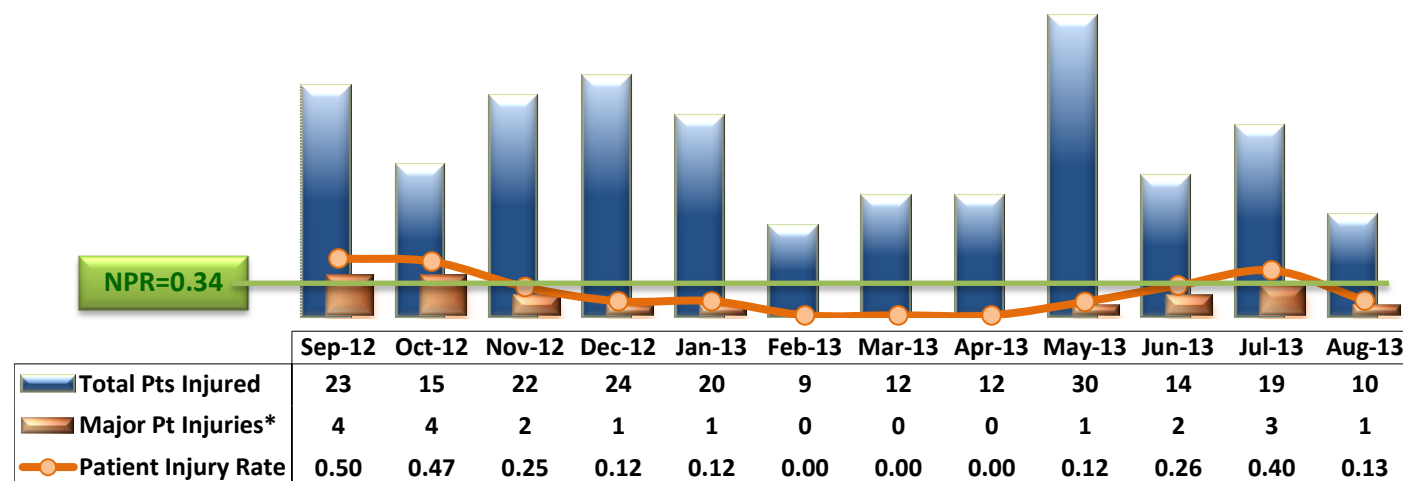
** It should be noted that during the month of May 2013, the Hospital was serving a few forensic individuals who were frequently involved in UIs, contributing to a huge spike in the number of UIs, particularly violent incidents, in May.

10. Physical Assaults by Severity



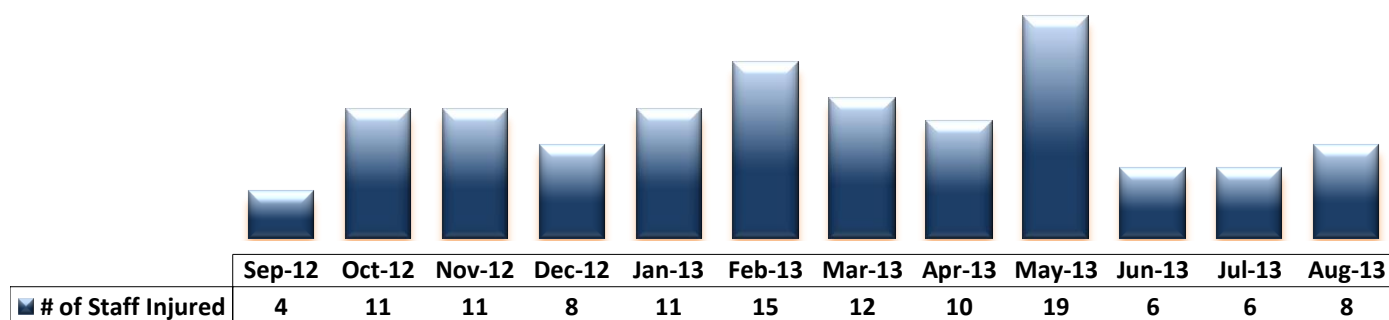
* Any physical assault that accompanies a code 13 or results in extensive injury needing off-unit treatment or transfer to ER is considered to be high severity, any physical assault that causes a minor injury that can be treated on unit is considered to be medium severity, and physical assault events that result in no injury are considered to be low severity.

11. Patient Injuries



* Injury is broadly defined to include any type of injuries regardless of the cause or severity level. The total number of patients injured represents all of the reported injuries including minor injuries treated with first aid alone. However, the patient injury rate considers only the number of patient injuries that required beyond first-aid level treatment based on the NRI definition and the patient injury rate is the number of 'major' patient injuries per every 1000 inpatient days

12. Staff Injuries



* Injury is broadly defined to include any type of injuries regardless of the cause or severity level. The total number of staff injured represents all of the reported staff injuries including minor injuries treated with first aid alone.

13. Percent of Patients Restrained or Secluded

NPR(R)=5.7%

NPR(S)=2.4%



	Sep-12	Oct-12	Nov-12	Dec-12	Jan-13	Feb-13	Mar-13	Apr-13	May-13	Jun-13	Jul-13	Aug-13
■ Restraint	0.0%	0.0%	0.0%	0.3%	0.0%	0.0%	0.0%	0.0%	0.0%	0.0%	0.0%	0.0%
■ Seclusion	0.0%	0.3%	0.7%	0.7%	1.3%	0.7%	0.3%	1.9%	1.9%	1.0%	0.3%	1.1%

* Percent of unique patients who were restrained at least once and percent of unique patients who were secluded at least once. The denominator includes all individuals who were served in care ≥ 1 day during month.

14. Restraint Hours Rate & Seclusion Hours Rate

NPR(R)=0.65

NPR(S)=0.55

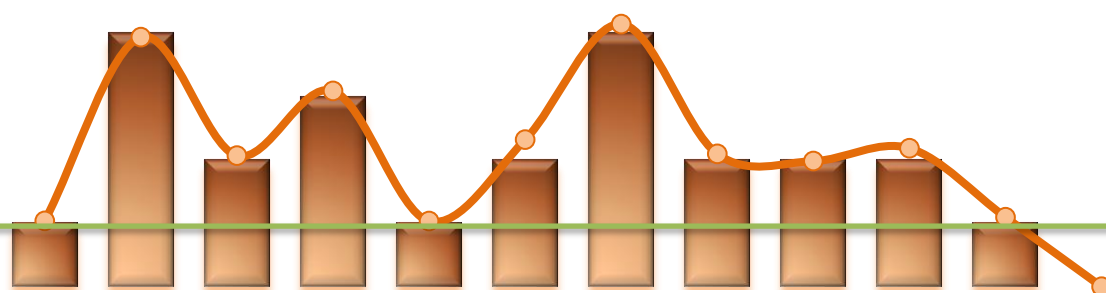


	Sep-12	Oct-12	Nov-12	Dec-12	Jan-13	Feb-13	Mar-13	Apr-13	May-13	Jun-13	Jul-13	Aug-13
■ Restraint	0.000	0.000	0.000	0.002	0.000	0.000	0.000	0.000	0.000	0.000	0.000	0.000
■ Seclusion	0.000	0.038	0.016	0.049	0.043	0.042	0.005	0.054	0.038	0.119	0.021	0.046

* Restraint/Seclusion Hours Rate: Number of hours spent in restraint/seclusion for every 1000 inpatient hours.

15. Elopements

NPR=0.12



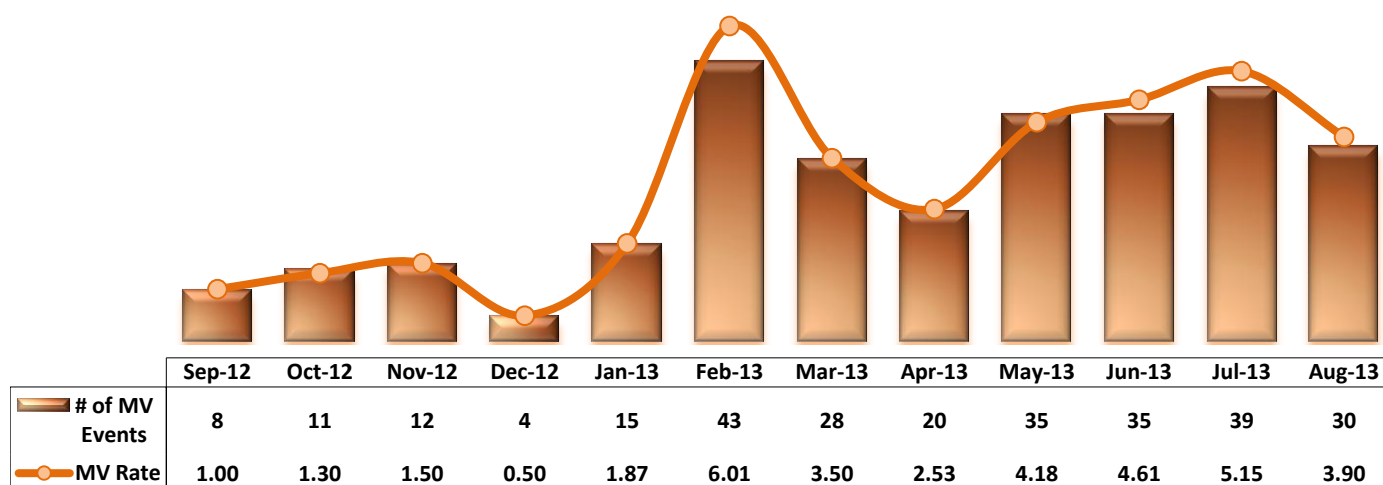
	Sep-12	Oct-12	Nov-12	Dec-12	Jan-13	Feb-13	Mar-13	Apr-13	May-13	Jun-13	Jul-13	Aug-13
■ # of Elopements	1	4	2	3	1	2	4	2	2	2	1	0
○ Elopement Rate	0.13	0.47	0.25	0.37	0.12	0.28	0.50	0.25	0.24	0.26	0.13	0.00

* It counts the total number of unauthorized leaves for any duration that were initiated during month and were recorded in Avatar. The elopement rate is the number of those unauthorized leaves that occurred for every 1000 inpatient days.

Key Trends: Medication Documentation, Medication Variance, ADR, and STAT (16~19)

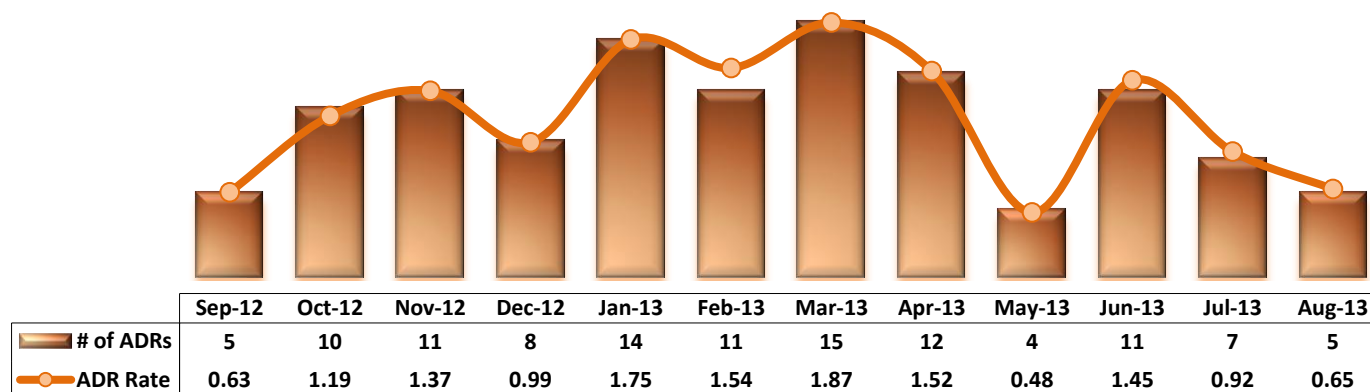
- The number of reported medication variance events has stayed at 30 or above since May 2013. A large number of medication variance incidents reported in August are related to inventory counting discrepancies in Pyxis. This issue is closely being monitored by Nursing and Pharmacy to identify causes.
- The number of reported ADRs has declined since June.
- The performance on documentation of medication administration results was noticeably low since May but much improved in August as the missing documentation rate fell to 0.34%, a level comparable to rates prior to May 2013.
- The number of STAT events has gradually declined and the number of individuals involved in ≥ 1 STAT order has remained similar over the past few months.

16. Reported Medication Variance Events



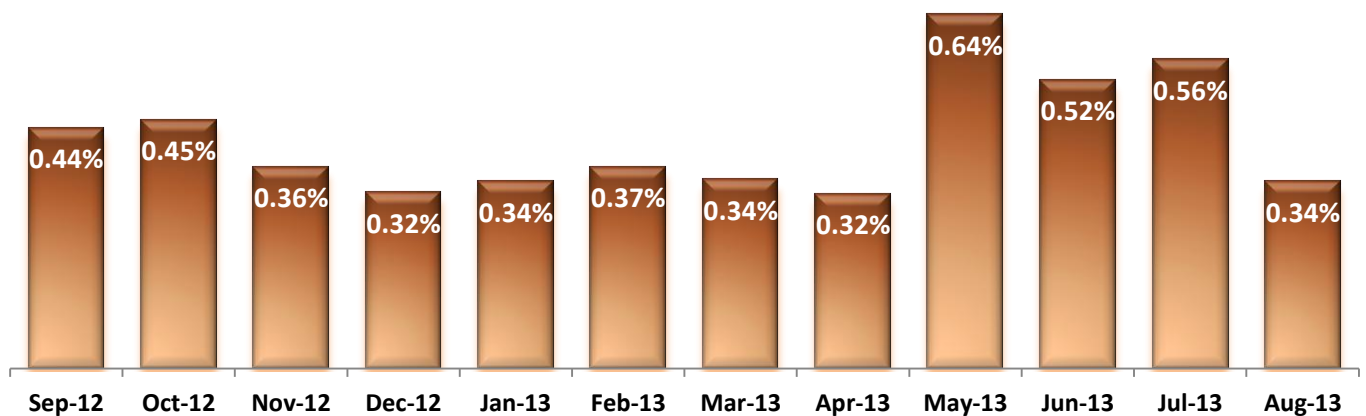
* MV Rate: Number of reported medication variance events that occurred for every 1000 inpatient days.

17. Reported Adverse Drug Reactions

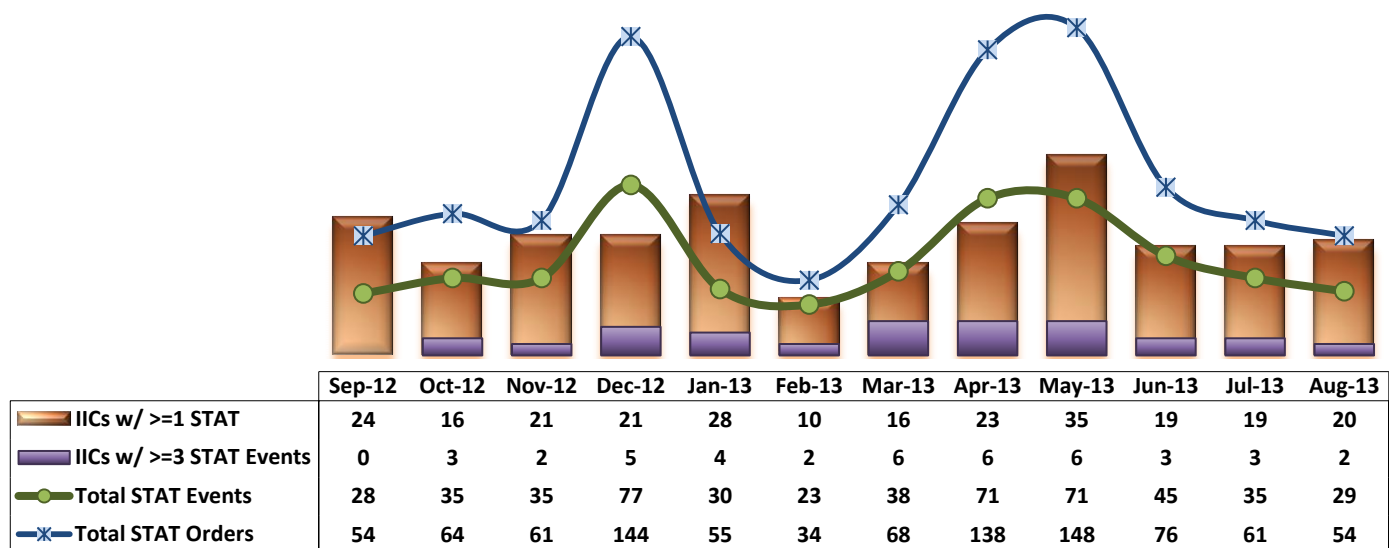


* ADR Rate: Number of reported adverse drug reaction events that occurred for every 1000 inpatient days.

18. Percent of Missing Documentation on Med-Administration



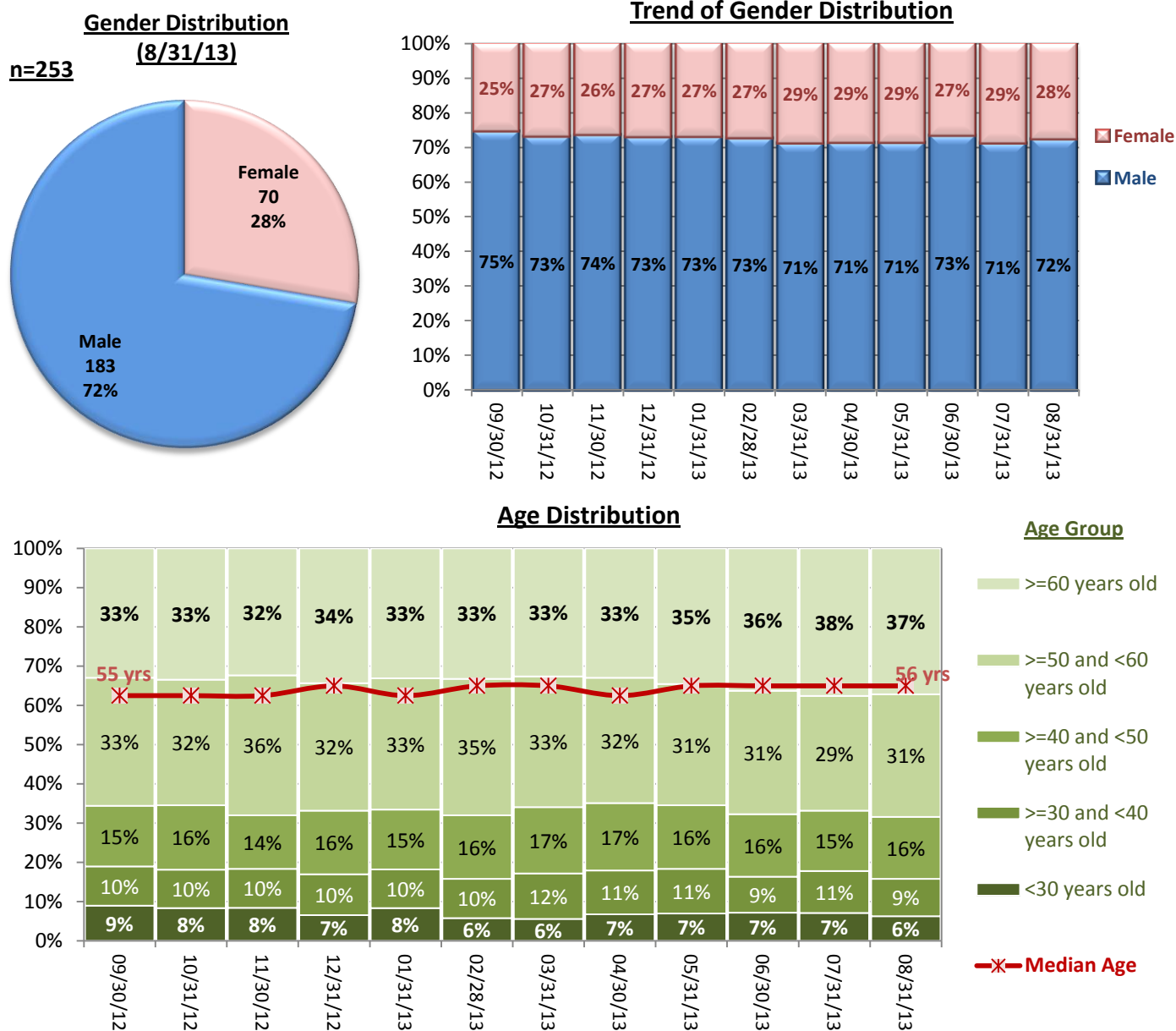
19. Number of STAT Events and Individuals Involved



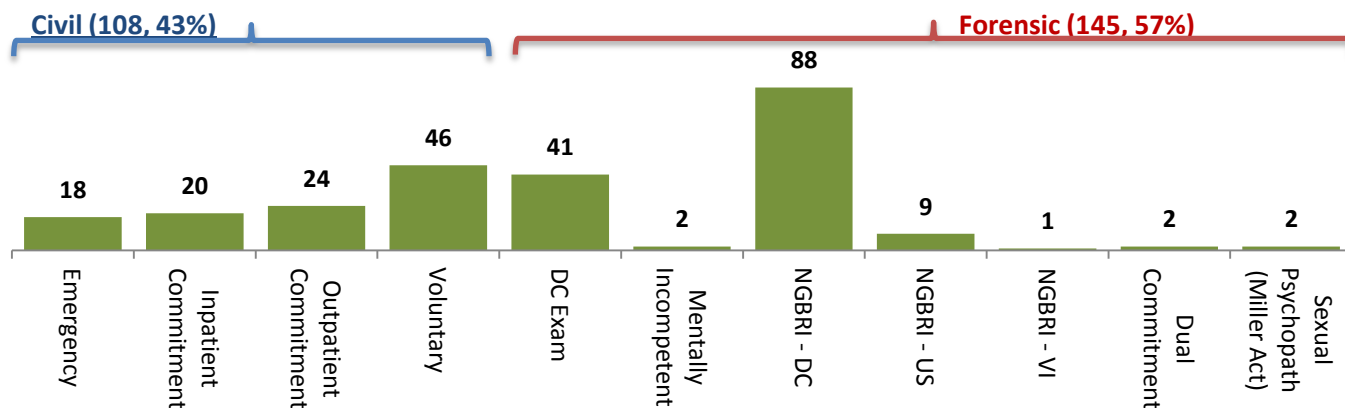
Key Trends: Demographics, Legal Status, and Length of Stay (20)

- The proportion of female individuals in care gradually increased over the past year.
- The age distribution trend suggests that individuals in our care continue to age. The percentage of those 60 years or older gradually increased throughout the year, reaching above 37% as of August 31, 2013. The median age (56 years old) also reflects this increase in older adult population for the recent months.
- The proportion of individuals in a civil legal status has been fairly stable at around 43% for the past several months since it increased during the 1st quarter of FY2013.
- The percentage of individuals served at the Hospital for 20 years or longer reached its highest level at 18% in June 2013 and since then, the median length of stay (LOS) has remained above 1150 days. This reflects the significant proportion of Insanity Acquittes served by the Hospital, which also contributes to the Hospital's population ageing.

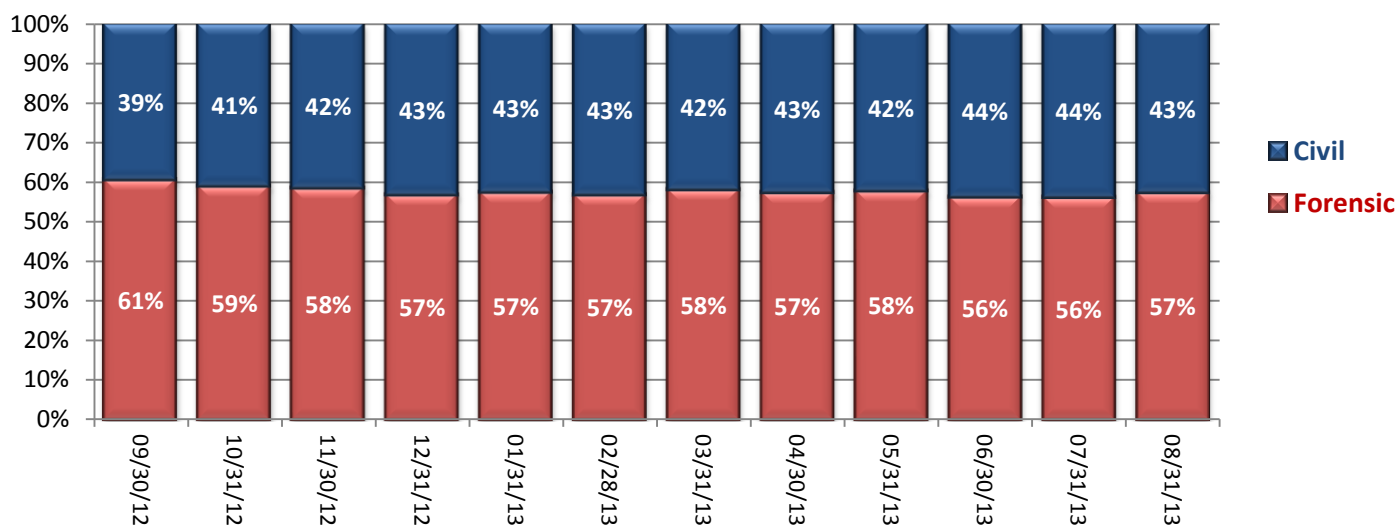
20. Demographics and Length of Stay



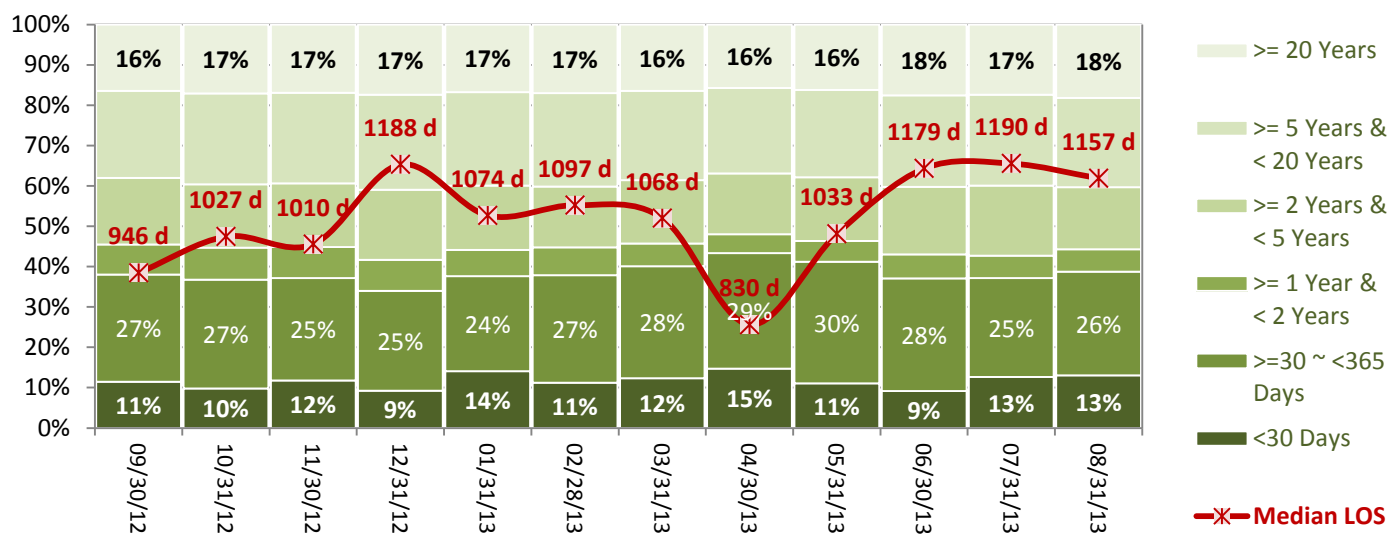
of Individuals by Legal Status (8/31/13)



Trend of Legal Status Distribution



Trend of Length of Stay



Performance Related Information for Staff & Managers

1. Census, Admissions, Discharges & Transfers

Data Source: Avatar

Updated as of 09/10/13

Category		Sep-12	Oct-12	Nov-12	Dec-12	Jan-13	Feb-13	Mar-13	Apr-13	May-13	Jun-13	Jul-13	Aug-13	Monthly Average	Total (12mths)	Figure
Admissions	Civil	15	12	18	14	22	14	23	19	17	16	16	18	17	204	Figure 1
	Forensic	19	19	18	11	17	14	20	25	14	12	21	17	17	207	
	Total	34	31	36	25	39	28	43	44	31	28	37	35	34	411	
Discharges	Civil	9	12	20	16	21	17	21	13	21	22	20	21	18	213	Figure 2
	Forensic	16	23	19	22	14	15	14	19	17	27	15	14	18	215	
	Total	25	35	39	38	35	32	35	32	38	49	35	35	36	428	
Net Gain During Month	Civil	6	0	-2	-2	1	-3	2	6	-4	-6	-4	-3		-9	
	Forensic	3	-4	-1	-11	3	-1	6	6	-3	-15	6	3		-8	
	Total	9	-4	-3	-13	4	-4	8	12	-7	-21	2	0		-17	
All Individuals on Roll at End of Month		279	275	272	259	263	259	267	279	272	251	253	253	265		
a. Present on Unit		275	270	270	255	259	254	261	273	267	246	247	251	261		
b. On AL		4	5	2	4	4	4	5	4	4	3	5	1	4		
c. On UL		0	0	0	0	0	1	1	2	1	2	1	1	1		
All Individuals on Roll: Daily Average during Month*		273	278	273	265	262	259	262	267	274	259	249	252	265		Figure 3
a. Present on Unit		266	272	267	260	258	255	258	264	270	253	244	248	260		
b. On AL		7	6	6	5	3	4	3	2	3	5	4	3	4		
c. On UL		0	0	0	0	1	0	1	1	1	1	1	1	0		
Patient Days**		7988	8430	8024	8059	8010	7152	8011	7918	8370	7597	7569	7693	7902	94821	
Inter-Unit Transfers during Month		10	7	11	7	8	3	17	17	8	3	11	5	9	107	Figure 4
Medical Leaves Initiated during Month	Emergency	24	29	17	9	24	23	12	10	17	13	12	10	17	200	
	Non-Emer	33	16	24	30	23	16	22	32	23	24	35	24	25	302	
	Total	57	45	41	39	47	39	34	42	40	37	47	34	42	502	
Non-Medical Leaves Initiated during Month		103	95	104	96	85	85	70	89	80	92	88	96	90	1083	
UL Initiated during Month		1	4	2	3	1	2	4	2	2	2	1	0	2	24	
Total Unique Patients Served during Month		302	310	306	297	298	298	294	310	310	299	286	285	300		
30 Day Readmission ***	Civil	2	0	2	2	3	0	2	3	3	0	1		2	18	
	Forensic	0	1	0	0	0	1	1	0	0	2	0		0	5	
	Total	2	1	2	2	3	1	3	3	3	2	1		2	23	

* This is the average number of individuals served on a given day for the respective month. Due to rounding from average calculation, numbers from its subcategories a, b, & c may not add up to the total number on this row.

** It counts the number of patients who are present on the unit and excludes those on authorized or unauthorized leave at 11:59pm on a given day.

*** Number of patients returning within 30 days of discharges that occurred during month.

Performance Related Information for Staff & Managers

2. Key Performance Indicators

Data Source: UI DB, ADR DB, Restraint/Seclusion Log, and Avatar

Updated as of 09/10/13

Category		Sep-12	Oct-12	Nov-12	Dec-12	Jan-13	Feb-13	Mar-13	Apr-13	May-13	Jun-13	Jul-13	Aug-13	Monthly Average	NPR* (Sep-11)	Figure
30 Day Readmit (Discharge Cohort)**	Civil	22.2%	0.0%	10.0%	12.5%	14.3%	0.0%	9.5%	23.1%	14.3%	0.0%	5.0%		9.2%		Figure 5
	Forensic	0.0%	4.3%	0.0%	0.0%	0.0%	6.7%	7.1%	0.0%	0.0%	7.4%	0.0%		2.5%		
	Combined	8.0%	2.9%	5.1%	5.3%	8.6%	3.1%	8.6%	9.4%	7.9%	4.1%	2.9%		5.9%	6.9%	
Number of Unusual Incidents		175	159	182	171	198	216	235	234	293	189	193	149	200		Figure 6
UI by Severity	Catastrophe	0	0	0	0	0	0	0	0	0	0	0	0	0		Figure 7
	High	13	24	26	18	26	17	19	15	22	17	15	9	18		
	Medium	54	58	63	59	60	87	106	89	118	66	67	41	72		
	Low	108	77	93	94	112	112	110	130	153	106	111	99	109		
Patient Unusual Incident Rate		20.2	17.0	21.8	18.7	21.8	28.1	27.8	27.2	33.7	24.0	24.8	19.0	23.6		Figure 8
Physical Assault Incident Rate		5.0	3.8	4.9	4.6	3.9	3.6	4.0	4.4	8.6	3.4	4.9	4.3	4.6		
Selected Types of Incidents	Physical Assault	40	32	39	37	31	26	32	35	72	26	37	33	37		Figure 9
	Psych Emergency	7	13	15	17	15	13	9	15	31	14	9	9	14		
	Fall	22	9	15	21	24	17	16	16	34	17	15	11	18		
	Injury	25	22	32	29	30	24	20	22	47	18	22	16	26		
Physical Assaults by Severity	High	2	6	8	4	4	1	3	2	9	2	5	5	4		Figure 10
	Medium	7	11	13	15	12	10	14	10	29	13	17	12	14		
	Low	31	15	18	18	15	15	15	23	34	11	15	16	19		
Patient Injury Rate***		0.50	0.47	0.25	0.12	0.12	0.00	0.00	0.00	0.12	0.26	0.40	0.13	0.20	0.34	Figure 11
Patients with Major Injuries***		4	4	2	1	1	0	0	0	1	2	3	1	2		
Total Patients Injured***		23	15	22	24	20	9	12	12	30	14	19	10	18		
Total Staff Injured***		4	11	11	8	11	15	12	10	19	6	6	8	10		Figure 12
Elopement Rate		0.13	0.47	0.25	0.37	0.12	0.28	0.50	0.25	0.24	0.26	0.13	0.00	0.34	0.12	Figure 13
Medication Variance Rate		1.00	1.30	1.50	0.50	1.87	6.01	3.50	2.53	4.18	4.61	5.15	3.90	2.95		Figure 14
Adverse Drug Reaction Rate		0.63	1.19	1.37	0.99	1.75	1.54	1.87	1.52	0.48	1.45	0.92	0.65	1.19		Figure 15
Missing Med-Admin Documentation		0.44%	0.45%	0.36%	0.32%	0.34%	0.37%	0.34%	0.32%	0.64%	0.52%	0.56%	0.34%	0.42%		Figure 16
Percent of Patients Restrained		0.0%	0.0%	0.0%	0.3%	0.0%	0.0%	0.0%	0.0%	0.0%	0.0%	0.0%	0.0%	0.0%	5.7%	Figure 18
Percent of Patients Secluded		0.0%	0.3%	0.7%	0.7%	1.3%	0.7%	0.3%	1.9%	1.9%	1.0%	0.3%	1.1%	0.9%	2.4%	
Restraint Hours Rate		0.000	0.000	0.000	0.002	0.000	0.000	0.000	0.000	0.000	0.000	0.000	0.000	0.000	0.65	Figure 19
Seclusion Hours Rate		0.000	0.038	0.016	0.049	0.043	0.042	0.005	0.054	0.038	0.119	0.021	0.046	0.039	0.55	

* National Public Rate, NASMHPD Research Institute, National Research Institute (NRI), Data as of June 2012, Published in January 2013.

** Percentage of patients returning within 30 days of discharges that occurred during month

*** Refer to the next page [UI & Medication]

**** As of September 2012, we are temporarily removing the emergency involuntary medication administration data from PRISM because we discovered a technical glitch in Avatar that made this data inaccurate. A fix is under way and this indicator will be reported again as reliable data becomes available.

Performance Related Information for Staff & Managers

3. Unusual Incident & Medication

Data Source: UI DB, ADR DB, and Avatar

Updated as of 09/10/13

Category		Updated as of 9/17/13												Monthly Average	Total (12mths)	NPR* (Sep-11)
		Sep-12	Oct-12	Nov-12	Dec-12	Jan-13	Feb-13	Mar-13	Apr-13	May-13	Jun-13	Jul-13	Aug-13			
Total Unusual Incidents**		175	159	182	171	198	216	235	234	293	189	193	149	200	2394	
Total Major Unusual Incidents		70	97	121	128	129	114	101	115	175	87	94	70	108	1301	
Patient Involved UI Only**		161	143	175	151	175	201	223	215	282	182	188	146	187	2242	
Patient UI Rate		20.2	17.0	21.8	18.7	21.8	28.1	27.8	27.2	33.7	24.0	24.8	19.0	23.6		
Unique Patients Involved in UI**		108	109	107	95	110	117	117	108	126	100	109	86	108	1292	
Selected Types of Incidents	Physical Assault	40	32	39	37	31	26	32	35	72	26	37	33	37	440	
	Psych Emergency	7	13	15	17	15	13	9	15	31	14	9	9	14	167	
	Fall	22	9	15	21	24	17	16	16	34	17	15	11	18	217	
	Injury	25	22	32	29	30	24	20	22	47	18	22	16	26	307	
Physical Assault Rate		5.0	3.8	4.9	4.6	3.9	3.6	4.0	4.4	8.6	3.4	4.9	4.3	4.6		
UI by Severity	Catastrophe	0	0	0	0	0	0	0	0	0	0	0	0	0	0	
	High	13	24	26	18	26	17	19	15	22	17	15	9	18	221	
	Medium	54	58	63	59	60	87	106	89	118	66	67	41	72	868	
	Low	108	77	93	94	112	112	110	130	153	106	111	99	109	1305	
Physical Assaults by Severity	High	2	6	8	4	4	1	3	2	9	2	5	5	4	51	
	Medium	7	11	13	15	12	10	14	10	29	13	17	12	14	163	
	Low	31	15	18	18	15	15	15	23	34	11	15	16	19	226	
Total Patients Injured***		23	15	22	24	20	9	12	12	30	14	19	10	18	210	
Patients with Major Injuries***		4	4	2	1	1	0	0	0	1	2	3	1	2	19	
Patient Injury Rate***		0.50	0.47	0.25	0.12	0.12	0.00	0.00	0.00	0.12	0.26	0.40	0.13	0.20		0.34
Total Staff Injured**		4	11	11	8	11	15	12	10	19	6	6	8	10		
Total UL Incident Reports		3	3	2	5	4	2	3	2	2	1	4	1	3	32	
Total ULs Documented in Avatar		1	4	2	3	1	2	4	2	2	2	1	0	2		
Elopement Rate		0.13	0.47	0.25	0.37	0.12	0.28	0.50	0.25	0.24	0.26	0.13	0.00	0.34		0.12
Med Variance (MV) Reports**		8	11	12	4	15	43	28	20	35	35	39	30	23	280	
MV Rate		1.00	1.30	1.50	0.50	1.87	6.01	3.50	2.53	4.18	4.61	5.15	3.90	2.95		
Adverse Drug Reactions Reports		5	10	11	8	14	11	15	12	4	11	7	5	9	113	
ADR Rate		0.63	1.19	1.37	0.99	1.75	1.54	1.87	1.52	0.48	1.45	0.92	0.65	1.19		
Total Med Administrations Scheduled		104812	112293	107901	111670	110726	97488	108150	103057	107694	102644	102303	102848		1271586	
Total Missing Documentations		456	505	393	356	375	356	370	326	690	537	572	348		5284	
Percent of Missing Documentation		0.44%	0.45%	0.36%	0.32%	0.34%	0.37%	0.34%	0.32%	0.64%	0.52%	0.56%	0.34%		0.42%	
Total STAT Orders		54	64	61	144	55	34	68	138	148	76	61	54	80		Figure 17
Total STAT Events****		28	35	35	77	30	23	38	71	71	45	35	29	43		
Total Individuals Involved >=1 STAT		24	16	21	21	28	10	16	23	35	19	19	20	21		
Total Patients with >=3 STAT Events		0	3	2	5	4	2	6	6	6	3	3	2	4		

* National Public Rate, NASMHPD Research Institute, National Research Institute (NRI), Data as of June 2012, Published in January 2013.

** Numbers may change if any additional UI report is made after the data run date from UI database (around the 15th of the following month).

*** Injury is broadly defined to include any type of injuries regardless of the cause or severity level. The total number of patients injured represents all of the reported injuries including minor injuries treated with first aid alone. However, the patient injury rate considers only the number of patient injuries that required beyond first-aid level treatment based on the NRI definition and the patient injury rate is the number of 'major' patient injuries per every 1000 inpatient days

**** One STAT event may involve more than one STAT order for the same patient. Any orders placed within 15 minute timeframe are considered to belong to one STAT event.

Performance Related Information for Staff & Managers

4. Restraint & Seclusion

Data Source: Restraint/Seclusion Log and UI DB (for # of total events and patients) and Avatar (for patient days/hours)

Updated as of 09/10/13

Category	Sep-12	Oct-12	Nov-12	Dec-12	Jan-13	Feb-13	Mar-13	Apr-13	May-13	Jun-13	Jul-13	Aug-13	Monthly Average	Total (12mths)	NPR* (Sep-11)
Number of Restraint Events	0	0	0	1	0	0	0	0	0	0	0	0	0.1	1	
Number of Unique Patients Restrained	0	0	0	1	0	0	0	0	0	0	0	0	0.1		
Percentage of Patients Restrained	0.0%	0.0%	0.0%	0.3%	0.0%	0.0%	0.0%	0.0%	0.0%	0.0%	0.0%	0.0%	0.0%		5.7%
Total Restraint Hours (h:mm)	0:00	0:00	0:00	0:20	0:00	0:00	0:00	0:00	0:00	0:00	0:00	0:00	0:01	0:20	
Restraint Hours Rate	0.000	0.000	0.000	0.002	0.000	0.000	0.000	0.000	0.000	0.000	0.000	0.000	0.000		0.65
Number of Seclusion Events	0	5	2	5	7	5	1	10	12	5	4	5	5.1	61	
Number of Unique Patients Secluded	0	1	2	2	4	2	1	6	6	3	1	3	2.6		
Percentage of Patients Secluded	0.0%	0.3%	0.7%	0.7%	1.3%	0.7%	0.3%	1.9%	1.9%	1.0%	0.3%	1.1%	0.9%		2.4%
Total Seclusion Hours (h:mm)	0:00	7:40	3:10	9:32	8:12	7:13	1:00	10:18	7:44	21:45	3:50	8:30	7:24	88:54	
Seclusion Hours Rate	0.000	0.038	0.016	0.049	0.043	0.042	0.005	0.054	0.038	0.119	0.021	0.046	0.039		0.55

* National Public Rate, NASMHPD Research Institute, National Research Institute (NRI), Data as of June 2012, Published in January 2013.

Performance Related Information for Staff & Managers

5. Major Incidents by Incident Location/Unit

Data Source: UI DB

Updated as of 09/10/13

Category		Sep-12	Oct-12	Nov-12	Dec-12	Jan-13	Feb-13	Mar-13	Apr-13	May-13	Jun-13	Jul-13	Aug-13	Monthly Average	Total (12mths)	Percent
Total Unusual Incidents		175	159	182	171	198	216	235	234	293	189	193	149	200	2394	
Total Major Incidents*		70	97	121	128	129	114	101	115	175	87	94	70	108	1301	100%
Major Incident Location	1A	2	11	4	7	7	4	9	5	11	4	10	12	7	86	7%
	1B	6	10	13	10	13	16	6	10	22	9	9	6	11	130	10%
	1C	5	8	9	11	17	6	8	13	8	4	11	4	9	104	8%
	1D	6	2	13	14	17	17	14	16	13	5	7	4	11	128	10%
	1E	7	15	8	18	15	10	20	32	30	12	8	3	15	178	14%
	1F	2	7	17	12	12	13	12	8	33	19	7	12	13	154	12%
	1G	19	12	20	9	7	4	1	5	8	10	13	4	9	112	9%
	2A	4	2	3	1	5	0	1	0	3	2	2	1	2	24	2%
	2B	0	1	7	8	2	1	1	4	1	3	1	0	2	29	2%
	2C	3	9	4	12	6	8	5	3	9	1	4	3	6	67	5%
	2D	3	6	8	10	7	10	2	7	14	10	6	1	7	84	6%
	TLC	4	6	4	9	8	15	14	7	18	7	9	14	10	115	9%
	Other	9	8	11	7	13	10	8	5	5	1	7	6	8	90	7%
Total Physical Assault Incidents		40	32	39	37	31	26	32	35	72	26	37	33	37	440	100%
Assault Incident Location	1A	4	5	1	2	1	1	2	2	3	0	2	6	2	29	7%
	1B	4	1	0	2	0	0	0	2	7	0	0	1	1	17	4%
	1C	1	2	4	1	3	1	1	5	5	0	5	3	3	31	7%
	1D	3	1	9	6	10	6	9	7	6	2	6	3	6	68	15%
	1E	3	4	2	8	6	2	8	4	8	3	4	2	5	54	12%
	1F	2	5	7	2	0	3	3	1	16	1	3	4	4	47	11%
	1G	15	4	6	2	2	0	1	1	2	6	7	1	4	47	11%
	2A	0	0	0	0	0	0	0	0	0	0	0	0	0	0	0%
	2B	0	0	2	3	0	1	0	1	0	0	1	0	1	8	2%
	2C	0	2	0	2	3	0	1	1	4	2	1	3	2	19	4%
	2D	3	5	5	8	4	4	1	6	9	8	2	0	5	55	13%
	TLC	5	2	2	1	2	8	6	4	11	4	6	9	5	60	14%
	Other	0	1	1	0	0	0	0	1	1	0	0	1	0	5	1%

Performance Related Information for Staff & Managers

5. Major Incidents by Incident Location/Unit

Data Source: UI DB

Updated as of 09/10/13

Category		Sep-12	Oct-12	Nov-12	Dec-12	Jan-13	Feb-13	Mar-13	Apr-13	May-13	Jun-13	Jul-13	Aug-13	Monthly Average	Total (12mths)	Percent
Total Fall Incidents		22	9	15	21	24	17	16	16	34	17	15	11	18	217	100%
Fall Incident Location	1A	3	1	3	4	3	0	3	1	8	3	2	4	3	35	16%
	1B	3	2	4	6	5	7	4	2	6	5	4	2	4	50	23%
	1C	0	1	1	1	1	1	0	1	1	1	3	0	1	11	5%
	1D	0	1	1	1	0	2	1	3	0	0	0	1	1	10	5%
	1E	2	0	1	1	1	0	2	1	1	0	1	0	1	10	5%
	1F	0	0	1	0	5	0	0	0	1	1	0	1	1	9	4%
	1G	8	1	1	0	0	0	0	2	0	1	0	0	1	13	6%
	2A	0	0	2	1	2	0	0	0	1	2	0	0	1	8	4%
	2B	1	0	0	4	0	1	0	1	1	1	0	0	1	9	4%
	2C	2	1	0	1	0	2	0	0	2	0	2	0	1	10	5%
	2D	1	0	0	1	1	1	0	0	5	2	0	1	1	12	6%
	TLC	0	0	1	0	2	2	5	3	7	1	0	0	2	21	10%
	Other	2	2	0	1	4	1	1	2	1	0	3	2	2	19	9%
Total Injury Incidents		25	22	32	29	30	24	20	22	47	18	22	16	26	307	100%
Injury Incident Location	1A	2	4	0	2	2	0	1	1	1	1	4	4	2	22	7%
	1B	1	2	3	3	0	4	2	2	6	2	1	1	2	27	9%
	1C	0	2	2	1	1	0	0	1	2	1	3	0	1	13	4%
	1D	0	1	6	6	8	8	6	4	4	1	4	3	4	51	17%
	1E	3	2	1	2	6	2	4	4	4	3	0	1	3	32	10%
	1F	1	2	8	2	0	2	1	1	9	2	2	3	3	33	11%
	1G	9	3	4	2	3	0	1	2	2	2	2	1	3	31	10%
	2A	0	0	1	0	1	0	0	0	2	0	0	0	0	4	1%
	2B	0	0	0	2	0	1	0	1	0	1	0	0	0	5	2%
	2C	2	1	3	2	0	1	1	0	3	0	2	1	1	16	5%
	2D	2	1	2	3	3	0	0	1	8	2	1	0	2	23	7%
	TLC	2	2	2	2	1	3	3	2	4	3	2	2	2	28	9%
	Other	3	2	0	2	5	3	1	3	2	0	1	0	2	22	7%

* Not every incident is a major incident. This counts only those incidents that were classified to be major based on the policy.

Performance Related Information for Staff & Managers

6. Demographic Information of Individuals in Care

Data Source: Avatar

Updated as of 09/10/13

Category	Sub-group	Sep-12	Oct-12	Nov-12	Dec-12	Jan-13	Feb-13	Mar-13	Apr-13	May-13	Jun-13	Jul-13	Aug-13	Monthly Average	Percent*
Total Active (on Roll) at End of Month*		279	275	272	259	263	259	267	279	272	251	253	253	265	
Gender	Female	71	74	72	70	71	71	77	80	78	67	73	70	73	27.5%
	Male	208	201	200	189	192	188	190	199	194	184	180	183	192	72.5%
Age	Median Age (Years)	55 yrs	55 yrs	55 yrs	56 yrs	55 yrs	56 yrs	56 yrs	55 yrs	56 yrs	56 yrs	56 yrs	56 yrs	56 yrs	
	<30 years old	25	23	23	17	22	15	15	19	19	18	18	16	19	7.2%
	>=30 and <40 years old	28	27	27	27	26	26	31	31	31	23	27	24	27	10.3%
	>=40 and <50 years old	43	45	37	42	40	42	45	48	44	40	39	40	42	15.9%
	>=50 and <60 years old	91	88	97	84	88	90	89	89	84	79	74	79	86	32.4%
	>=60 years old	92	92	88	89	87	86	87	92	94	91	95	94	91	34.2%
Legal Status of Individuals on Roll at End of Month	Emergency	22	21	19	21	20	19	22	29	31	27	19	18	22	8.4%
	Inpatient Commitment	24	23	23	21	21	21	23	21	21	21	23	20	22	8.2%
	Outpatient Commitment	21	23	21	24	23	26	23	24	18	18	19	24	22	8.3%
	Voluntary	43	46	50	46	48	46	44	45	45	44	50	46	46	17.4%
	Civil Sub-total	110	113	113	112	112	112	112	119	115	110	111	108	112	42.3%
	DC Exam	59	55	50	39	44	38	48	54	50	38	38	41	46	17.4%
	Mentally Incompetent	5	3	3	3	5	5	4	1	1	1	1	2	3	1.1%
	NGBRI - DC	92	91	93	92	90	92	89	90	91	87	89	88	90	34.1%
	NGBRI - US	9	9	9	9	8	8	10	10	10	10	9	9	9	3.5%
	NGBRI - VI	1	1	1	1	1	1	1	1	1	1	1	1	1	0.4%
	Dual Commitment	1	1	1	1	1	1	1	2	2	2	2	2	1	0.5%
	Sexual Psychopath (Miller Act)	2	2	2	2	2	2	2	2	2	2	2	2	2	0.8%
	Forensic Sub-total	169	162	159	147	151	147	155	160	157	141	142	145	153	57.7%
Length of Stay	Median LOS (Days)	946 d	1027 d	1010 d	1188 d	1074 d	1097 d	1068 d	830 d	1033 d	1179 d	1190 d	1157 d	1067 d	
	Average LOS (Days)	3030 d	3093 d	3103 d	3248 d	3152 d	3181 d	3093 d	2973 d	3065 d	3294 d	3217 d	3207 d	3138 d	
	<30 Days	32	27	32	24	37	29	33	41	30	23	32	33	31	11.7%
	>=30 ~ <365 Days	74	74	69	64	62	69	74	80	82	70	62	65	70	26.6%
	>= 1 Year & < 2 Years	21	22	21	20	17	18	15	13	14	15	14	14	17	6.4%
	>= 2 Years & < 5 Years	46	43	43	45	42	39	42	42	43	42	44	39	43	16.0%
	>= 5 Years & < 20 Years	60	62	61	61	61	60	59	59	59	57	57	56	59	22.4%
	>= 20 Years	46	47	46	45	44	44	44	44	44	44	44	46	45	16.9%

* Counts the total number of individuals who are on the hospital roll at end of each month. This number serves as denominator to calculate percentage of each group.