

IN THE UNITED STATES DISTRICT COURT  
FOR THE DISTRICT OF COLUMBIA

WILLIAM DIXON, et al.

Plaintiffs,

v.

ADRIAN FENTY, et al.

Defendants.

Civil Action Number 74-285 (TFH)  
Next Scheduled Event: Status Hearing  
August 27, 2008

**STATUS REPORT OF DEFENDANTS  
REGARDING COURT MONITOR RECOMMENDATIONS**

Come now the defendants, by and through counsel, the Office of the Attorney General for the District of Columbia, responding to the Court's Order of September 14, 2007.

**I. INTRODUCTION**

The purpose of this status report is to provide the Court with the March 2008 status report on high priority issues, as recommended by the Court Monitor and ordered by the Court on September 14, 2007. This status report addresses the following ten (10) areas: (1) status of exit criteria; (2) implementation of the plan for comprehensive crisis emergency services system; (3) planning for the Comprehensive Psychiatric Emergency Program ("CPEP"); (4) payments to providers; (5) development of alternate governance structures for the DCCSA; (6) quality of care issues at Saint Elizabeths Hospital; (7) implementation status of KPMG recommendations; (8) status of utilizing acute care beds as alternatives to Saint Elizabeths Hospital; (9) status of implementation of the Saint Elizabeths discharge plan; and (10) construction status of the new Saint Elizabeths Hospital building.

## **II. EXIT CRITERIA.**

The District of Columbia Department of Mental Health ("DMH") continues to work to meet the performance targets established by the nineteen (19) exit criteria. In his January 2008 report, the Court Monitor found that DMH had satisfied the performance targets for two (2) of the nineteen (19) exit criteria. He also found that DMH had made significant progress on six (6) of the exit criteria and had not made significant progress on the remaining eleven (11) exit criteria.

During the second quarter of FY 08, DMH is focused on addressing the Court Monitor's concerns with regard to Exit Criteria #1, Exit Criteria #2, Exit Criteria #10, Exit Criteria #13, Exit Criteria #16, and Exit Criteria #18, and is moving forward with initiatives to meet the established performance targets for the seventeen (17) remaining Exit Criteria.

### **A. Exit Criteria #1 and #2**

The preliminary results of the consumer satisfaction surveys conducted by the Consumer Action Network ("CAN") were provided to the Quality Council on January 17, 2008. Minutes from DMH's Quality Council meeting are attached as Exhibit A. Information about the results of the MHSIP survey will be provided as soon as the report is finalized. The Quality Council also discussed the collection and reporting of consumer functioning data, as required by Exit Criteria #2.

### **B. Exit Criteria #3 and #4**

The Dixon Community Service Reviews ("reviews") (Exit Criteria #3 and #4) are scheduled for March 3 – 14, 2008 (children and youth) and June 2 – 13, 2008 (adults). DMH has increased the sample size for the reviews to ensure that the results of the reviews are statistically valid. Results of the children and youth reviews will be discussed in the next DMH status report.

C. **Exit Criteria #5, #6, #7 and #8**

DMH is revisiting the data collection methods established with regard to the penetration rates. As of February 15, 2008, DMH's performance with regard to FY 07 penetration rates has improved from the levels reported in the Court Monitor's January 2008 report, as a result of further processing of FY 07 Mental Health Rehabilitation Service ("MHRS") claims. The penetration rates for FY 06 and FY07 are as follows:

Exit Criteria #	Target	FY 06 Performance Level <sup>1</sup>	FY 07 Performance Level <sup>2</sup>
#5 - Services to Children/Youth	5% of the District's Population of Children & Youth	2.44%	2.70%
#6 - Services to Children/Youth with SED	3% of the District's Population of Children & Youth	1.45%	1.62%
#7 - Services to Adults	3% of the District's Population of Adults	2.08%	2.11%
#8 - Services to Adults with SMI	2% of the District's Population of Adults	1.77%	1.79%

D. **Exit Criteria #9**

DMH is revisiting the data collection methods established for Exit Criteria # 9 and will be discussing the definition of supported housing and the data collection method with the Court Monitor during the second and third quarters of FY 08.

E. **Exit Criteria #10**

Although DMH has met and maintained the performance target established for Exit Criteria #10, the Court Monitor has required additional information so that he can verify that DMH is complying with its policy regarding the provision of supported employment. DMH

<sup>1</sup> Based upon claims for FY 06 services that were processed and approved for payment as of December 20, 2007.

<sup>2</sup> Based upon claims for FY 07 services that were processed and approved for payment as of February 15, 2008.

expects to submit a request to the Court Monitor, asking that this exit criteria move to inactive monitoring status before the June 2008 status report.

F. **Exit Criteria #11 and Exit Criteria #17**

DMH is also working to improve performance for Exit Criteria #11 and #17. DMH will report further on these efforts in the June 2008 status report.

G. **Exit Criteria #13 and #16**

DMH is finalizing the comprehensive strategy for serving the homeless that is required by Exit Criteria #13 and #16. DMH expects to provide the Court Monitor with a draft of the comprehensive strategy for review during the second quarter of FY 08. DMH will report further on the status of the comprehensive strategy in the June 2008 status report.

H. **Exit Criteria #14 and 15**

DMH is now achieving the performance levels required for Exit Criteria #14 and #15. However, the Court Monitor will not review performance on those exit criteria until DMH achieves a performance level of 2.5% for Exit Criteria #6.

I. **Exit Criteria #18**

DMH has retained KPMG to assist in documenting the cost allocation method used to allocate overhead costs. DMH and KPMG are meeting weekly to review progress.

**III. COMPREHENSIVE CRISIS EMERGENCY SERVICES PLAN**

A draft of the final version of the Crisis Emergency Services Planning Workgroup Report (the "Crisis Emergency Report") was issued on December 21, 2007. A copy of the Crisis Emergency Report was furnished to the Court at the status conference of February 21, 2008. As stated in the Court Monitor's January 2008 Report, DMH will convene quarterly meetings of the workgroup to discuss implementation of the recommendations in the Crisis Emergency Report.

The first quarterly meeting was held on February 13, 2008. Implementation activities to date include the following:

(1) DMH issued a Request for Proposal ("RFP") for a Court Urgent Care Clinic ("CUCC") to be located within the D.C. Superior Court, which is located at 500 Indiana Avenue, NW, Washington, D.C. 20001. DMH is currently reviewing the proposals submitted by potential vendors. DMH is also developing a Memorandum of Agreement ("MOA") with D.C. Superior Court for operation of the CUCC and identification of space to be used. DMH will report on the progress with regard to the award of the CUCC contract and the MOA with the D.C. Superior Court in the June 2008 status report.

(2) The District of Columbia Community Services Agency ("DCCSA") developed and implemented a new program, called SURE, to enhance the access of services to adult consumers seeking services. SURE is designed to guarantee quick and easy access to care and to ensure clinical intervention the same day of intake for consumers ninety percent (90%) of the time. The referral sources have reported a high level of satisfaction with SURE. The SURE program is rotated through the Adult Division sites which are located at 35 K Street, NE, 1125 Spring Road, NW, and 3861 Alabama Avenue, SE. The average wait time for a clinical assessment is 30-45 minutes. A clinical assessment includes a comprehensive diagnostic/assessment and a linkage to the Community Support Team which will provide ongoing treatment services. Consumers are able to complete the entire process within two and a half (2 1/2) to three (3) hours.

(3) DMH is actively recruiting for an Adult Mobile Crisis Team Coordinator.<sup>3</sup>

---

<sup>3</sup> As reported by the Dixon Court Monitor in his January 2008 report, DMH issued an RFP for a children's mobile crisis and stabilization bed provider. DMH is reviewing the proposals submitted by potential vendors and expects to award a contract by early April 2008. DMH will report on the implementation of the children's mobile crisis service in its June 2008 status report.

(4) On March 7, 2008, DMH will publish proposed rules in the *D.C. Register* to establish a DMH Committee to oversee the Officer-Agent Certification process and to establish the requirements for individuals to become certified DMH Officer-Agents in the District of Columbia. Certified Officer-Agents have the authority to take a person who may be mentally ill, and because of the illness, likely to injure self or others if not immediately detained, into custody and make application for admission to a private hospital or to DMH for emergency observation and diagnosis pursuant to the District's civil commitment law. The public will have thirty (30) days to comment on the proposed rules.

#### **IV. PLANNING FOR CPEP**

As discussed in the Court Monitor's January 2008 report and prior status reports, DMH is proceeding with the renovation of Building #14 (the current building) for the Comprehensive Psychiatric Emergency Program ("CPEP"). DMH has engaged DC Housing Enterprises (a subsidiary of the District of Columbia Housing Authority) to bid the project and serve as the construction manager. Leo A. Daley, will complete the design work for the renovation of Building #14. The CPEP operation will remain in Building #14 during the demolition and construction as most of the work will occur on the uninhabited half of the building. The estimated project completion date is eight (8) to ten (10) months from the beginning of renovation.

#### **V. PAYMENTS TO PROVIDERS**

##### **A. Payments to Providers for FY 2007 MHRS**

As of February 18, 2008, DMH received unduplicated MHRS claims in the amount of \$42,740,277.00 for FY 2007 services. DMH has approved \$34,358,705.00 in claims for

payment as of February 18, 2007. The Office of the Chief Financial Officer (“OCFO”) has processed payments in the amount of \$33,916,476.00 as of February 18, 2007. A copy of the provider position report for FY 2007 payments, dated February 18, 2008, is attached and marked as Exhibit B. The last date for submission of new claims for FY 2007 was December 31, 2007. DMH expects to provide a final report of all claims submitted prior to February 15, 2008, in the June 2008 report.

**B. Payments to Providers for FY 2008 MHRS**

November 1, 2007, DMH transferred responsibility for claims payment of Medicaid MHRS claims to the Medical Assistance Administration (“MAA”). The Memorandum of Understanding that formalizes MAA’s responsibility for claims payment is attached as Exhibit C. As of February 18, 2008, DMH has received unduplicated MHRS claims in the amount of \$3,434,282.00 for FY 2008 services. DMH has approved \$2,959,564.00 in claims for payment as of February 18, 2008. The OCFO has processed payments in the amount of \$2,798,509.00 as of February 18, 2008. A copy of the provider position report for FY 2008 payments, dated February 18, 2008, is attached and marked as Exhibit D.

The implementation of transferring claims payment to MAA was not as seamless as planned. After successfully testing and transmitting November 2007 claims payment transactions, some problems were identified as the volume of transactions increased. The problems included batches of claims not being successfully transmitted to MAA and problems with the MAA MMIS system accepting four (4) services (Assertive Community Treatment, Community-Based Intervention, Medication/Somatic Treatment, and Community Support-telephone only). Although there was financial hardship experienced by several of the providers,

DMH has addressed these problems, and a large number of transactions have been adjudicated. The remaining issues have been identified and are in the remediation process.

C. **Development of Performance Metrics**

As previously reported in the December 2007 status report, DMH selected Computer Intelligence Associates to implement operational metrics. DMH has put the metrics online for a group of DMH Employees to scrutinize. Metrics have been initially created in the following core areas: Claims Processing, Access To Care, Consumer Enrollment, Provider Funding, and Medicaid Reimbursement. The employees are scrutinizing these metrics to identify any data errors and to suggest improvements in the way data is currently presented in the metrics to make data more actionable.

DMH is also identifying trending models that may be compatible with the metrics. For example, DMH is planning to add claim approval (previously known as the “warrant process”) trending for both local and Medicaid expenditures. DMH anticipates developing a rollout plan for the metrics in March, 2008 for full operation within DMH by May 2008.

DMH is also looking at developing additional metrics. These include the creation of a Dixon Dashboard that will, at first, capture and report on all system generated metrics, and a separate dashboard with metrics tailored to the needs of the DCCSA.

**VI. ALTERNATIVE GOVERNANCE OPTIONS FOR DCCSA**

DMH continues to outline and develop various options for the review of the DCCSA operations to determine the appropriate way to address the Court Monitor’s concerns. DMH is including the review of options for the DCCSA in its contract with KPMG and will be reviewing those options with the Court Monitor during the second and third quarter of FY 08.



## VII. QUALITY OF CARE ISSUES AT SAINT ELIZABETHS HOSPITAL

### A. Filling Staff Vacancies.

Saint Elizabeths Hospital (“Hospital”) has filled a total of sixty-two (62) positions as of February 26, 2008 and over fifty percent (50%) of the positions were clinical. The Hospital currently has one thousand fifty-three (1053) positions. One hundred fifty-eight (158) of those positions are vacant, representing a fifteen percent (15%) vacancy rate. One hundred ten (110) of the one hundred fifty-eight (158) vacant positions are clinical.

Sixty percent (60%) of the one hundred and fifty-eight (158) vacancies are in some stage of the recruitment process, which means that a vacancy announcement has been issued or is in the process of being issued; applications have been received and reviewed; or a tentative selection has been made. Seventy-five (75) of the one hundred and fifty-eight (158) vacant positions were recently funded in the Hospital personnel services budget on October 1, 2007. Position descriptions and vacancy announcements are being developed for these vacancies.

The Hospital is also focused on developing partnerships with professional membership organizations in order to increase recruitment. The Hospital’s strategic plan includes posting positions on non-traditional employment sites as well as in periodic academic journals and magazines such as Psychiatric News, Nursing Spectrum, and Nurse Week.

### B. Quality of Care Issues

As reported in the December 2007 report, the District entered into a settlement agreement with the United States Department of Justice (“DOJ”) regarding major reform initiatives for the Hospital (the “DOJ Settlement Agreement”). The Hospital is fully engaged in the implementation of the DOJ Settlement Agreement. Pursuant to the DOJ Settlement Agreement, DOJ visited the Hospital February 6-11, 2008. During the visit DOJ staff and consultants,

including a psychiatrist, psychologist and nurse, met with Hospital staff to review records and provide consultation on integrated treatment planning, mental health assessments, and nursing standards. DOJ will issue a report detailing consulting activities within sixty (60) days of the visit, and will visit the Hospital again in September, 2008. As mentioned in the Court Monitor's January 2008 Report, page 21, the Hospital filed its bi-annual status report with DOJ on December 21, 2007, which provided an overview of progress made under the Settlement Agreement to date, as well as areas where additional progress is needed.

The Hospital is currently piloting two (2) best practice initiatives on four (4) units. Staff working on two (2) units are receiving intensive training on "person centered treatment planning", which is designed to refocus treatment planning to be more recovery based and patient oriented. In addition, staff working on two (2) different units are receiving training on "trauma informed care". In both initiatives, consultants are working directly with staff to train and observe staff's implementation of the initiatives, and are coaching staff as they begin to implement these best practices.

C. **Hospital Information System**

As mentioned in the Court Monitor's Report, page 23, planning and implementation of the Hospital's new information system (AVATAR) is approximately fifty percent (50%) complete. Phase I of implementation includes data on admission, discharge, billing, pharmaceuticals, and laboratory services. The Hospital is currently identifying the training needs and key staff to be trained, and developing a plan for coordinating training of staff while maintaining appropriate staffing levels. It is anticipated that Phase I will be completed between August and September 2008, depending on the coordination of training for staff.

**VIII. IMPLEMENTATION OF KPMG RECOMMENDATIONS**

As previously reported in the District's status reports, DMH engaged KPMG in January 2007 to provide project management services to assist DMH to: (1) recover federal match dollars (70%) federal financial participation ("FFP") from Medicaid for MHRs claims DMH paid over a twenty seven (27) month period; (2) transition the MHRs provider claims payment processing to MAA, the District's Medicaid agency; and (3) explore the feasibility of contracting with an Administrative Services Organization ("ASO") to handle several functions that DMH now handles, such as claims processing, consumer intake and authorizations, provider relations and some information technology functions.

With KPMG's project management assistance and claims evaluation assistance from ValueOptions, DMH continues to make measurable progress in recovering FFP from Medicaid by correcting and resubmitting previously denied claims. During FY 07, DMH worked with ValueOptions to evaluate denied claims to determine any recovery of Medicaid revenues. To date, DMH has submitted or resubmitted a total gross amount of approximately \$16.2 million and has collected approximately \$11.6 million in federal financial participation (FFP). Based on current projections, DMH is on track to completely recover the outstanding receivable for FY 2005 and FY 2006. The OCFO has observed that DMH collections have been at a higher rate for FY 2007 than at any point in the MHRs program.

As reported in December 2007, DMH transitioned the payment function for MHRs Medicaid claims to MAA, which shifts the responsibility of managing claims denials and resubmissions to the MHRs providers, where it belongs.

With respect to the third KPMG deliverable, as previously reported, work on the evaluation of an ASO, has been suspended, pending further discussions with the City

Administrator's office how this initiative will be affected by legislation creating a new Health Care Finance Administration.

**IX. USE OF ACUTE CARE BEDS AS ALTERNATIVES TO SAINT ELIZABETHS**

DMH is currently developing an RFP to expand acute care capacity. A table detailing acute care admissions to GSCH the Psychiatric Institute of Washington and Saint Elizabeths Hospital is attached as Exhibit E.

**X. IMPLEMENTATION OF SAINT ELIZABETHS DISCHARGE PLAN**

As previously reported, DMH initiated work on the Saint Elizabeths Discharge Plan on January 2, 2007. The Discharge Planning Coordinator, who assists consumers with a smooth transition to community living, continues to meet weekly with the Saint Elizabeths Hospital CEO, his team and community-based providers to work on discharge planning initiatives, including the review of policy changes needed to improve the process, and reduction of barriers that prevent or impact a smooth transition to the least restrictive environment. In addition, the Department is working on developing a specialized discharge initiative to best meet the needs of individuals with complex needs that have resulted in long term hospitalizations or repeat readmissions. Meetings are taking place to finalize this initiative.

As of February 5, 2008 one hundred eighty-three (183) consumers have been discharged from Saint Elizabeths Hospital. Of those consumers, sixteen (16) have been discharged to nursing homes.

Currently there are fifty-four (54) civil and forensic consumers identified as ready for discharge. Of those fifty-four (54) consumers, there are two (2) consumers who are readmissions and three (3) who are waiting on nursing home placements. DMH is working to identify

community placements that can be available for consumers ready for discharge that fall into special needs categories, and continues to coordinate with housing services, ACT Services, Consumer and Family Affairs, as well as other District of Columbia agencies, to assure that these services are readily available as needed. Current barriers to discharge include finding appropriate placements for consumers with medical needs and consumers who require specialized housing with access to long-term support due to dual diagnosis with mental illness and mental retardation. Other barriers include finding appropriate placements for consumers who exhibit aggressive or sexually deviant behavior. Finally, specialized placements are needed to accommodate disabilities and language barriers.

**XI. CONSTRUCTION OF THE NEW SAINT ELIZABETHS HOSPITAL BUILDING**

Consistent with prior District status reports, a copy of the November 2007 construction status report prepared by Gilbane, the construction manager, is attached and marked as Exhibit F. A copy of the December 2007 status report and the January 2008 status report prepared by Gilbane are attached and marked as Exhibit G and Exhibit H. These most recent progress reports include narratives describing the work completed as of the date of the progress report and pictures of the site. As of this date, construction is approximately forty-three percent (43%) complete.

Respectfully submitted,

EUGENE ADAMS

Principal Attorney General for the District of Columbia

GEORGE VALENTINE

Deputy Attorney General, Civil Litigation Division

ELLEN EFROS

Section Chief, Equity II Section

/s/

\_\_\_\_\_  
DANIEL A. REZNECK

Senior Assistant Attorney General

D.C. Bar No. 31625

441 4<sup>TH</sup> Street, NW, Suite 600

Washington, D.C. 20002

(202) 724-5691

(202) 727-3625 (facsimile)

Email: [daniel.rezneck@dc.gov](mailto:daniel.rezneck@dc.gov)

# **EXHIBIT A**

## **QUALITY COUNCIL MINUTES**

**GOVERNMENT OF THE DISTRICT OF COLUMBIA  
DEPARTMENT OF MENTAL HEALTH  
QUALITY COUNCIL  
MINUTES**

**Date:** January 17, 2008  
**Time:** 9:30 a.m. – 11:00 a.m.  
**Chair:** Dan Byrne, DMH Director of Quality Improvement

<b>Attendees:</b>	<b>Tamara Pirius</b>	<b>Community Connections</b>
	<b>Marti Pontes</b>	<b>Washington Hospital Center</b>
	<b>Monica Wilson-Greene</b>	<b>SAGA Adventures, Inc.</b>
	<b>Carroll Ward</b>	<b>DMH Quality Improvement</b>
	<b>Christy Respress</b>	<b>Pathways to Housing</b>
	<b>Bill Reidy</b>	<b>DMH COSIG</b>
	<b>Andres Marquez-Lara</b>	<b>Green Door</b>
	<b>Dennis Hobb</b>	<b>McClendon Center</b>
	<b>Ana Veria</b>	<b>DC CSA</b>
	<b>Charisse Peoples</b>	<b>First Home Care</b>



AGENDA ITEM	DISCUSSION	ACTION /RECOMMENDATION	RESPONSIBLE PERSON(S)
<p><b>LOCUS / CALOCUS ASSESSMENT and REASSESSMENT</b></p>	<p>Some providers indicated that they did not feel that scores were accurate and truly described consumer functioning. Other providers reported that DMH was supposed to report back to them using data collected through the eCura event screen.</p> <p>Dan Byrne indicated that LOCUS / CALOCUS review would be part of the fidelity (quality) audits conducted by Office of Accountability.</p> <p>Members generally agreed that changes in scores should drive treatment planning and clinical interventions.</p>	<p>Office of Accountability Data Manager will work with IS staff to gain access to stored LOCUS/CALOCUS data and determine if reports can be run.</p>	<p>Yoseph Tesfaye</p>
<p><b>MENTAL HEALTH STATISTICS IMPROVEMENT PROGRAM (MHSIP)</b></p>	<p>Preliminary results of the 2007 survey were shared with Council members. The survey was conducted during the period of May to September 2007. The Adult Survey included domains of Access, Quality / Appropriateness, Positive Outcomes, Participation in</p>	<p>The final 2007 MHSIP report will be forwarded to Council members as soon as edits are completed.</p>	<p>Dan Byrne</p>

<p><b>MENTAL HEALTH STATISTICS IMPROVEMENT PROGRAM (MHSIP) continued</b></p>	<p><b>Treatment Planning, and General Satisfaction. In the domain of Positive Outcomes, 89% of consumers surveyed were satisfied. In all other domains, 90% of consumers surveyed were satisfied.</b></p> <p><b>The 2007 Youth Survey revealed that ,for the Access domain, 80% were satisfied; General Satisfaction-77% were satisfied; Positive Outcomes-74% were satisfied; Participation in Treatment Planning-75% were satisfied; and Cultural Sensitivity-80% were satisfied.</b></p>		
<p><b>PROVIDER AGENCIES' CONSUMER SATISFACTION PROGRAMS</b></p>	<p><b>The Green Door Council member then described his agency's consumer satisfaction data collection processes. The Washington Hospital Center's Council member explained how they have implemented a quarterly process that examines consumers' perception of improvement. This was followed by the McClendon Center's member who described JCAHO consumer perception surveys and the DC CSA Council member who described their</b></p>		

	processes for assessing consumer satisfaction.		
<b>CLINICALLY INFORMED OUTCOME MEASUREMENTS (CIOMS)</b>	Bill Reidy provided an overview of clinically informed outcome measurements and described how DMH and APRA have used them to inform and improve practice. Currently, Green Door and a DC CSA ACT team are using these measurements.	<p>Council members asked if CIOMS would be required of providers by DMH. DMH has not yet made a decision.</p> <p>Request for Power Point presentation on CIOMS will be made for the next Council meeting on April 17<sup>th</sup>.</p>	Dan Byrne
<b>DMH SPONSORED TRAINING</b>	Council members recommended that DMH sponsor annual training on clinical record documentation for front line staff. They also asked for annual training on the assessment of life domains, treatment planning processes, and ethics training for community support workers.	Training requests will be conveyed to Director of DMH Training Institute.	Dan Byrne

# **EXHIBIT B**

## **2007 PROVIDER POSITION REPORT**

Dates of Service from Contract Start Date through 9/30/2007 - As of 2/18/08 Processing Date

FY 2007	*FY2007 Task Order Allocations	Total FY 07							Approved Claims Pending Warrant	FY 2007 Warranted a/o 2/18/08	FY 2007 SOAR Payments a/o 2/15/08	Variance - SOAR Payment to Warrant	SOAR Payment Amt as a % of Allocation	Medicaid FFP	Medicaid Local Match	Local-Lo Funds
		Claim Batch Receipts	Exception Report Claims	Unduplicated Claims Receipts**	Excep %	Adjud Denials	Denial %									
Affordable Behavioral	327,793	312,625	17,249	295,376	6%	37,880	13%	80	257,416	256,166	(1,250)	79%	169,037	72,445	16,5	
Anchor Mental Health Association, Inc	2,228,557	2,960,112	60,135	2,899,977	2%	544,439	19%	28,382	2,327,157	2,228,555	(98,602)	104%	1,371,319	587,708	368,1	
CARECO Mental Health Services, Inc	340,000	310,287	3,851	306,436	1%	6,848	2%	0	299,588	299,136	(452)	88%	194,333	83,285	21,1	
Center for Multi-cultural	172,067	29,292	1,648	27,644	6%	7,210	26%	161	20,273	19,971	(302)	12%	4,250	1,821	14,1	
Center for Therapeutic Concepts CTC	227,326	215,154	7,758	207,396	4%	13,160	6%	936	193,300	193,516	216	85%	121,335	52,001	19,3	
Children's National Medical Ctr	500	1	0	1	0%	1	100%	0	0	0	0	0%	0	0	0	
Coates & Lane Enterprises INC	60,000	7,853	1,321	6,532	17%	1,306	20%	402	4,824	4,824	0	8%	2,307	989	1,1	
Community Connections, Inc.	8,548,879	8,920,289	348,331	8,571,958	4%	489,469	6%	4,980	8,077,509	8,046,313	(31,196)	94%	4,941,322	2,117,710	1,018,1	
Deaf - REACH, Specialty Services	347,766	382,423	9,328	373,095	2%	93,051	25%	5,628	274,416	274,416	0	79%	178,698	76,585	19,1	
Family and Child Services	1	1,371	0	1,371	0%	1,371	100%	0	0	0	0	0%	0	0	0	
Family Preservation Services	2,771,114	1,715,940	25,841	1,690,099	2%	16,066	1%	916	1,673,117	1,669,156	(3,961)	60%	1,085,519	465,222	122,3	
Fihankra Place	161,571	274,948	3,627	271,321	1%	124,963	46%	969	145,389	144,431	(958)	90%	92,189	39,509	13,1	
First Home Care Corporation	4,703,733	5,813,663	154,694	5,658,969	3%	1,617,182	29%	32,032	4,009,755	3,920,295	(89,460)	85%	2,689,579	1,152,677	167,1	
Gateway Services Management	1	1	0	1	0%	1	100%	0	0	0	0	0%	0	0	0	
Georgetown Mobile Outreach	12,000	1	0	1	0%	1	100%	0	0	0	0	0%	0	0	0	
Greater Washington Urban League	124,200	63,440	6,182	57,258	10%	44,309	77%	0	12,949	12,080	(869)	10%	6,068	2,601	4,1	
Green Door	5,160,852	5,512,960	114,392	5,398,568	2%	296,405	5%	24,831	5,077,332	5,045,572	(31,760)	98%	3,038,607	1,302,260	736,1	
Hillcrest Children's Center**	1	45,760	2,305	43,455	5%	1,390	3%	161	41,904	0	(41,904)	997%	19,234	8,243	14,1	
House of Goshen	500	1	0	1	0%	1	100%	0	0	0	0	0%	0	0	0	
Integrated Behavior Services Group	1	1	0	1	0%	1	100%	0	0	0	0	0%	0	0	0	
JoMab	1	1	0	1	0%	1	100%	0	0	0	0	0%	0	0	0	
KIDD International	963,663	1,311,510	57,544	1,253,966	0%	334,671	27%	1,893	917,402	908,052	(9,350)	95%	613,532	262,942	40,1	
Latin America Youth Center	218,932	124,345	686	123,659	1%	15,866	13%	473	107,320	107,251	(69)	49%	35,776	15,333	56,1	
Life Stride, Inc	2,919,821	2,604,356	105,403	2,498,953	4%	541,138	22%	21,454	1,936,361	1,927,800	(8,561)	66%	1,133,246	485,677	317,1	
Lil Blue House	1	1	0	1	0%	1	100%	0	0	0	0	0%	0	0	0	
Mary's Center for Maternal and Child Care, In	80,828	70,441	2,698	67,743	4%	17,418	26%	145	50,180	50,079	(101)	62%	3,143	1,347	45,1	
McClelland Center, Specialty Services	822,168	440,907	21,396	419,511	5%	105,323	25%	6,693	307,495	307,495	0	37%	91,915	39,392	176,1	
MD/DC Family Resources	839,742	1,021,229	29,304	991,925	3%	231,253	23%	4,135	756,537	751,782	(4,755)	90%	518,491	222,210	15,1	
Neighbors Consejo	72,377	34,647	2,396	32,251	7%	4,733	15%	1,350	26,168	25,406	(762)	36%	1,643	704	23,1	
Pathways to Housing D.C., Specialty Service	981,638	820,537	14,764	805,773	2%	59,433	7%	3,482	742,858	736,053	(6,805)	76%	499,181	213,935	29,1	
Planned Parenthood of Metro DC	76,043	99,535	15,429	84,106	16%	8,063	10%	0	76,043	76,043	0	100%	52,799	22,628	1	
Pride Youth Service, Inc, PYS	41,913	1	0	1	0%	1	100%	0	0	0	0	0%	0	0	0	
Progressive Life Center, Inc.	1	1	0	1	0%	1	100%	0	0	0	0	0%	0	0	0	
PCS for Student Support Services	500	1	0	1	0%	1	100%	0	0	0	0	0%	0	0	0	
PSI	144,804	67,066	30,704	36,362	46%	11,984	33%	0	24,378	24,378	0	17%	16,746	7,177	1	
Psychiatric Institute of Washington	34,079	44,445	3,200	41,245	7%	21,476	52%	0	19,769	19,769	0	58%	493	211	19,1	
Psychiatric Center Chartered	647,547	483,181	249,103	234,078	52%	11,191	5%	1,608	221,279	219,855	(1,424)	34%	132,257	56,682	32,1	
Psychotherapeutic Outreach Services	1,448,303	1,362,624	94,778	1,267,846	7%	357,157	28%	6,745	903,944	835,402	(68,542)	62%	484,123	207,481	212,1	
Riverside Treatment Services, Inc	1	1	0	1	0%	1	100%	0	0	0	0	0%	0	0	0	
SAGA	56,610	25,748	10,653	15,095	41%	7,598	50%	60	7,437	6,713	(724)	13%	3,996	1,712	1,1	
Scruples Corporation	939,911	983,602	46,424	937,178	5%	179,932	19%	3,952	753,294	725,454	(27,840)	80%	500,792	214,625	37,1	
St. Paul Baptist Church	78,589	82,247	1,374	80,873	2%	133	0%	2,152	78,588	78,588	0	100%	32,755	14,038	31,1	
Wade & Wade	12,000	1	0	1	0%	1	100%	0	0	0	0	0%	0	0	0	
Unity Health Care, Inc.	150,000	61,456	8,339	53,117	14%	10,189	19%	949	41,979	41,979	0	28%	6,969	2,987	32,1	
Universal HealthCare Management Services	1,948,999	2,702,197	107,736	2,594,461	4%	721,793	28%	23,337	1,849,331	1,849,331	0	95%	1,100,881	471,806	276,1	
Volunteers of America Chesapeake	500	2,511	139	2,372	6%	2,067	87%	305	0	0	0	0%	0	0	0	
Washington Hospital Center	1,659,907	3,255,362	121,463	3,133,899	4%	1,694,957	54%	5,345	1,433,597	1,423,716	(9,881)	86%	832,668	356,858	244,1	
Woodley House, Inc.	413,331	448,819	103,250	345,569	23%	33,973	10%	2,455	309,141	309,141	0	75%	176,716	75,736	56,1	
Youth Villages	1,500,000	2,006,990	96,161	1,910,829	5%	522,393	27%	7,760	1,380,676	1,377,758	(2,918)	92%	418,850	179,507	782,1	
	41,239,071	44,619,884	1,879,607	42,740,277	4%	8,187,801	19%	193,771	34,358,705	33,916,476	(442,229)	83%	20,570,767	8,816,043	4,971,1	
DCCSA		7,776,422	386,112	7,390,310	5%	1,761,867	24%	35,831	5,592,612	0	0		2,966,806	1,271,488	1,354,1	
DMH CPEP		3,630,139	295,802	3,334,337	8%	7,335	0%	1,812	3,325,190	0	0		1,121,919	480,823	1,722,1	
All MHRS Provider Totals		56,026,445	2,561,521	53,464,924		9,957,003		231,414	43,276,507				24,659,492	10,568,354	8,048,1	

FY07 Medicaid FFP Amount to Date 24,659,492 100%

\*\*Hillcrest allocation was de-obligated - A/P will pay up to original PO amount

FY07 Medicaid FFP Reimbursed to Date Less 15,659,520 64%  
Outstanding FY07 Medicaid FFP Accts Receivable = 8,999,972 36%

\*FY2007 Allocations in SOAR updated 10/30/2007



## **EXHIBIT C**

# **SECOND AMENDMENT TO MOU BETWEEN MAA AND DMH FOR ADMINISTRATION OF THE MHRS PROGRAM**

**SECOND AMENDMENT TO  
MEMORANDUM OF UNDERSTANDING  
BETWEEN  
DEPARTMENT OF HEALTH  
MEDICAL ASSISTANCE ADMINISTRATION  
AND  
DEPARTMENT OF MENTAL HEALTH**

Pursuant to section IX, AMENDMENTS TO MOU, of the Memorandum of Understanding between Department of Health, Medical Assistance Administration and Department of Mental Health this Second Amendment to Memorandum of Understanding (the "Second Amendment") is made and entered into as of the **1st day of November, 2007** (the "Effective Date"), by and between the Department of Health, Medical Assistance Administration ("MAA") and the Department of Mental Health ("DMH") (hereinafter, sometimes each individually, "the Agency" and collectively "the Agencies"). Capitalized terms not otherwise defined herein shall have the meanings assigned to such terms in the Memorandum of Understanding by and between the Parties effective as of February 13, 2002 and amended effective February 13, 2003 (the "MOU").

**Background Information**

The MOU sets forth the terms and conditions upon which the Agencies shall work together to expand, improve, and coordinate access to community-based, rehabilitative mental health services, implement certification standards to ensure quality provision of mental health services, and build enhanced administrative capacity for the efficient management of the mental health services covered by the District of Columbia ("District") State Plan for Medical Assistance ("State Plan"). The MOU is entered into in order to implement the provisions of Section 1902a (11) and a (4) of the Social Security Act.

MAA and DMH have determined that it is necessary to amend the MOU to facilitate the direct payment of claims by MAA to Medicaid Rehabilitation Option (MRO) providers certified by DMH, also known as Mental Health Rehabilitation Services (MHRS) providers.

**THEREFORE**, MAA and DMH hereby agree to amend the MOU as follows:

1. Section II.A.4. shall be deleted in its entirety and replaced with the following:

"Recognize as qualified MRO providers each provider certified by DMH pursuant to Chapter 34, Title 22A of the District of Columbia Municipal Regulations (the "Certification Standards") (collectively the qualified MRO providers are referred to as the "Certified Providers" and individually as a "Certified Provider") by entering into a Medicaid provider agreement with each Certified Provider and by directly processing claims for payment for each Certified Provider;"



2. Section II.A.9 shall be added to read as follows:

“Provide DMH at a minimum on a weekly basis with detailed data that allows DMH to establish and maintain a Medicaid claims reporting system to include, but not limited to, claims payment and denial information.”

3. A new Section II.A.10 shall be added to read as follows:

“Designate a contact person for DMH requests for approval of medically necessary units of service in excess of the approved DMH-MAA HIPAA Cross-Walk.”

4. Section II.B.1.f. shall be deleted in its entirety and replaced with the following:

“Enter into a Human Care Agreement with Certified Providers for the provision of MRO services and facilitate Certified Providers entering into Medicaid Provider Agreements with MAA to authorize DMH to process claims for payment by MAA for the costs of MRO services provided to Medicaid-eligible recipients in accordance with applicable District and federal laws and rules.”

5. Section II.C. 4 and the First Amendment to the MOU dated February 3, 2003 shall be deleted in their entirety and replaced with the following:

“DMH and MAA agree that DMH shall budget for and receive all local funds allocated for MRO services to Medicaid-eligible consumers. DMH shall transfer to MAA through an Intra-District agreement the local match for services provided to Medicaid-eligible recipients after the Effective Date. MAA through its fiscal intermediary shall process claims for payments directly to Certified Providers for eligible MRO services. MAA shall claim the federal share of financial participation for all services provided in accordance with the MRO.”

6. A new section II.C.5 shall be added to read as follows:

“5. Intra-District Funding Provisions

- a. The estimated cost of services that will be provided under this MOU is based upon Medicaid claims data provided by MAA pursuant to Section I.A.9 of this Second Amendment and estimated using a rolling time series model adjusted for any activities not captured in the claims data.
- b. DMH shall transfer funds in such amounts agreed to by the Agencies based on the estimates to cover the cost of services provided by Certified Providers to Medicaid-eligible recipients after the amendment is approved.
- c. Based upon the claims data provided by MAA to DMH, DMH shall be solely responsible for monitoring MRO expenditures and requesting all

local funds needed to fund services. MAA will use its best efforts to assist DMH to secure the necessary funding if MAA does not provide the necessary data to monitor expenditures.

- d. DMH reserves the right to recover or withhold funding to MAA for Medicaid-eligible services that are paid for that are not provided pursuant to the terms of the MOU and its amendments. DMH and MAA shall establish procedures to reconcile funds transferred under this section with actual expenditures for services.
  - e. Pursuant to the Financial Review Process ("FRP") mandated by the Office of the Chief Financial Officer of the District of Columbia, all services provided under the MOU and its amendments shall be reported quarterly by DMH's Agency Financial Officer in the Purchasing Agency FRP submission to the Office of Budget and Planning by DMH."
7. A new Section II.C.6 shall be added to read as follows:
- 6. MAA and DMH shall develop and implement a plan for coordinating provider audits activities and conducting joint audits as set forth in an agreed upon program integrity plan. Both Agencies agree that MAA retains the authority to conduct the provider audits for the purposes of recoupment of any erroneous Medicaid payment made to Certified Providers regardless of the cause of the error. Moreover, both Agencies understand and agree that each Certified Provider is solely responsible for repayment of any erroneous payment unless DMH supplied the information resulting in the incorrect payment.
8. Section II, IMPLEMENTATION PLAN shall be renumbered as Section III.
9. Section III, DURATION OF THE MOU shall be renumbered as Section IV.
10. Section IV, TERMINATION OF MOU shall be renumbered as Section V.
11. Section V, RESOLUTION OF DISPUTES shall be renumbered as Section VI, deleted in its entirety and replaced with the following:

"The Parties shall work diligently and in good faith to strengthen inter-agency collaboration to ensure that Certified Providers are reimbursed for Medicaid-eligible services provided to Medicaid recipients. Disputes that cannot be resolved between the representatives from DMH and MAA directly involved in the activities covered by this MOU shall be referred to the Director of DMH and the Senior Deputy Director of MAA. The decision of the Directors shall be binding. If the Directors cannot resolve the issues arising under this MOU, all adjustments and/or disputes shall be resolved by the D.C. Office of Financial Operations and Systems."

12. Section VI, CONFIDENTIALITY OF INFORMATION shall be renumbered as Section VII.

13. Section VII, COMPLIANCE WITH ALL LAWS shall be renumbered as Section VIII.

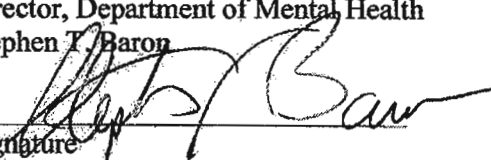
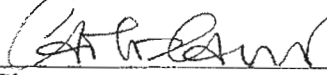
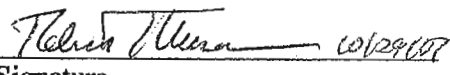
14. Section VIII, COMPLIANCE WITH CMS REQUIREMENTS shall be renumbered as Section IX.

15. Section IX, AMENDMENTS TO MOU shall be renumbered as Section X.

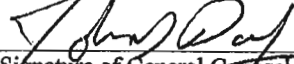
16. Section X, ENTIRETY OF AGREEMENT shall be renumbered as Section XI.

17. All other terms and conditions of the MOU shall remain in effect.

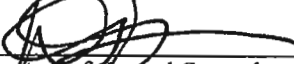
**IN WITNESS WHEREOF**, the undersigned hereby execute this MOU on behalf of their respective organizations as of the Effective Date.

Director, Department of Mental Health Stephen T. Baron  Signature	Department of Health Interim Director Carlos Cano  Signature  Senior Deputy Director, DOH MAA Robert Maruca  Signature
--	---

APPROVED AS TO LEGAL SUFFICIENCY

  
Signature of General Counsel  
Department of Mental Health

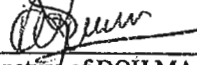
APPROVED AS TO LEGAL SUFFICIENCY

  
Signature of General Counsel  
Department of Health

APPROVED AS TO FUNDS AVAILABILITY

  
Signature of DMH Agency Financial Officer  
Department of Mental Health

APPROVED AS TO FUNDS AVAILABILITY

  
Signature of DOH MAA Agency Financial Officer  
Department of Health

# **EXHIBIT D**

## **2008 PROVIDER POSITION REPORT**

10/01/2007 through 10/31/2007 - As of 2/18/08 Processing Date

FY08 (October 2007 Dates of Service)	*FY2008 Task Order Allocations	Total FY 08						Approved Claims Pending Warrant	FY 2008 Warranted a/o 2/18/08	FY 2008 SOAR Payments a/o 2/08/08	Variance - SOAR Payment to Warrant	SOAR Payment Amt as a % of Allocation	Medicaid FFP	Medicaid Local Match	Local-Local Funds
		Claim Batch Receipts	Exception Report Claims	Unduplicated Claims Receipts**	Excep %	Adjud Denials	Denial %								
Affordable Behavioral	61,980	10,940	1,753	9,187	16%	3,075	33%	0	6,112	5,492	(620)	10%	4,171	1,788	153
Anchor Mental Health Association, Inc	1,185,400	224,986	19,086	205,900	8%	21,010	10%	1,011	183,879	167,240	(16,639)	16%	100,615	43,121	40,144
CARECO Mental Health Services, Inc	139,538	30,994	3,489	27,505	11%	1,511	5%	782	25,212	12,685	(12,527)	18%	16,502	7,072	1,631
Center for Multi-cultural	122,373	7,667	600	7,067	8%	493	7%	0	6,574	5,635	(939)	5%	2,157	925	3,492
Center for Therapeutic Concepts CTC	51,466	15,940	586	15,354	4%	1,417	9%	696	13,241	13,101	(140)	26%	9,156	3,924	161
Children's National Medical Ctr	15,753	1	0	1	0%	1	100%			0	0	0%	0	0	0
Coates & Lane Enterprises INC	42,971	1,884	196	1,688	10%	1,206	71%	0	482	482	0	1%	239	103	141
Community Connections, Inc.	1,115,000	888,487	59,547	828,940	7%	16,072	2%	13,466	799,402	799,402	0	72%	486,640	208,560	104,201
Deaf - REACH, Specialty Services	142,318	24,885	442	24,443	2%	3,266	13%	0	21,177	21,177	0	15%	11,845	5,076	4,251
Family and Child Services	47,114	7,199	100	7,099	1%	6,819	96%	280	0	0	0	0%	0	0	0
Family Preservation Services	515,198	188,129	14,981	173,148	8%	3,170	2%	452	169,526	166,822	(904)	33%	108,203	46,373	14,951
Fihankra Place	38,480	3,011	175	2,836	6%	1,587	56%		1,249	987	(282)	3%	874	376	0
First Home Care Corporation	787,653	315,122	27,701	287,421	9%	25,194	9%	4,693	257,534	253,908	(3,626)	33%	169,286	72,551	15,691
Gateway Services Management	1	1	0	1	0%	1	100%			0	0	0%	0	0	0
Georgetown Mobile Outreach	1	1	0	1	0%	1	100%			0	0	0%	0	0	0
Greater Washington Urban League	16,487	16,664	2,418	14,246	15%	9,760	69%	0	4,486	2,732	(1,754)	27%	1,075	461	2,951
Green Door	2,318,320	495,596	28,063	469,533	5%	6,291	1%	9,141	454,101	453,255	(846)	20%	266,244	114,105	73,751
Hillcrest Children's Center	9,559	1	0	1	0%	1	100%			0	0	0%	0	0	0
House of Goshen	1	1	0	1	0%	1	100%			0	0	0%	0	0	0
Integrated Behavior Services Group	3,155	1	0	1	0%	1	100%			0	0	0%	0	0	0
JoMab	1	1	0	1	0%	1	100%			0	0	0%	0	0	0
KIDD International	257,598	100,281	8,914	91,367	9%	22,090	24%	2,850	66,427	42,257	(24,170)	26%	45,490	19,496	1,441
Latin America Youth Center	240,737	8,966	453	8,513	5%	4,183	49%	49	4,281	4,032	(249)	2%	1,392	597	2,291
Life Stride, Inc	693,856	179,504	7,614	171,890	4%	8,880	5%	104	162,906	159,407	(3,499)	23%	93,567	40,100	29,231
Mary's Center for Maternal and Child Care, Inc	114,118	12,038	1,153	10,885	10%	5,181	48%	0	5,704	743	(4,961)	5%	82	36	5,581
McClendon Center, Specialty Services	726,698	91,427	4,618	86,809	5%	13,835	16%	89	72,885	59,249	(13,636)	10%	20,027	8,583	44,271
MD/DC Family Resources	285,900	116,749	2,076	114,673	2%	23,697	21%	2,060	88,916	60,534	(28,382)	31%	62,241	26,675	0
Neighbors Consejo	78,004	28,656	868	27,788	3%	7,771	28%	0	20,017	19,017	(1,000)	26%	1,723	739	17,551
Pathways to Housing D.C., Specialty Service	160,070	116,706	1,084	115,622	1%	16,559	14%	904	98,159	98,080	(79)	61%	63,335	27,143	7,681
Pride Youth Service, Inc, PYS	17,107	1	0	1	0%	1	100%			0	0	0%	0	0	0
Progressive Life Center, Inc.	16,681	1	0	1	0%	1	100%			0	0	0%	0	0	0
PCS for Student Support Services	17,102	1	0	1	0%	1	100%			0	0	0%	0	0	0
PSI	58,121	5,780	423	5,357	7%	486	9%	130	4,741	4,741	0	8%	3,136	1,344	261
Psychiatric Institute of Washington	16,824	1	0	1	0%	1	100%			0	0	0%	0	0	0
Psychiatric Center Chartered	133,706	15,966	972	14,994	6%	550	4%	89	14,355	13,249	(1,106)	11%	8,163	3,498	2,691
Psychotherapeutic Outreach Services	436,959	102,909	6,378	96,531	6%	2,976	3%	0	93,555	65,684	(27,871)	21%	54,416	23,321	15,811
Riverside Treatment Services, Inc	8,683	1	0	1	0%	1	100%			0	0	0%	0	0	0
SAGA	14,857	1	0	1	0%	1	100%			0	0	0%	0	0	0
Scruples Corporation	201,011	52,651	2,723	49,928	5%	5,226	10%	80	44,622	42,996	(1,626)	22%	30,138	12,976	1,561
St. Paul Baptist Church	32,501	5,920	131	5,789	2%	0	0%	0	5,789	5,789	0	18%	2,420	1,037	2,331
Wade & Wade	1	1	0	1	0%	1	100%			0	0	0%	0	0	0
Unity Health Care, Inc.	535,690	24,059	957	23,102	4%	4,905	21%	165	18,032	17,032	(1,000)	3%	6,175	2,646	9,211
Universal HealthCare Management Services	419,576	71,278	10,594	60,684	15%	4,922	8%	0	55,762	43,664	(12,098)	13%	32,117	13,764	9,881
Volunteers of America Chesapeake	455,477	25,119	2,965	22,154	12%	16,901	76%	5,253	0	0	0	0%	0	0	0
Washington Hospital Center	441,164	321,744	7,988	313,756	2%	174,249	56%	613	138,894	137,099	(1,795)	31%	76,581	32,821	29,491
Woodley House, Inc.	215,580	18,794	1,686	17,108	9%	1,006	6%	634	15,468	15,468	0	7%	8,292	3,554	3,621
Youth Villages	899,999	127,304	4,353	122,951	3%	16,875	14%	0	106,076	104,770	(1,306)	12%	32,883	14,093	59,701
	13,090,789	3,657,369	223,087	3,434,282	6%	431,177	13%	43,541	2,959,564	2,798,509	(161,055)	23%	1,719,185	736,793	503,581
DCCSA	N/A	13,677	2,607	11,070	19%	3,879	35%	0	7,191	0	0		1,739	N/A	4,701
DMH CPEP	N/A	1	0	1	0%	1	100%			0	0		0	N/A	0
All MHRS Provider Totals		3,671,047	225,694	3,445,353		435,057		43,541	2,966,755				1,720,923	736,793	508,291

FY08 Medicaid FFP Amount to Date	1,720,923	100%
FY08 Medicaid FFP Reimbursed to Date	773,999	45%
Less		
Outstanding FY08 Medicaid FFP Accts Receivable	946,924	55%

\*FY2008 Allocations updated from SOAR Report - 11/01/07

**EXHIBIT E**

**FY 08 ACUTE CARE  
ADMISSIONS**

## Actual Acute Care FY 08 - Clean data

	Nov-07	Dec-07	Jan-08
Total GSECH Actual Admits	19	27	23
Total PIW Actual Admits	22	3	15
Total SEH Actual Admits - Acute	32	28	42
Total SEH Acutal Admits - 15 day transfers	3	6	1
Total Admissions	76	64	81
# SEH COMP Admissions	5	3	5
# SEH Involuntary Admissions	26	30	38
# SEH Voluntary Admissions	1	1	0
# SEH Admissions w/out AHL prior auth	0	0	0
Referred to SEH from:			
Community ER	8	2	3
Inpatient med/surg bed	0	1	0
Inpatient psych (Other than 15 day protocol transfers)	2	0	2
CPEP	22	25	37
unk source/other	0	0	0
GSECH Transfer post 14 days	3	4	0
PIW Transfer post 14 days	0	2	1
Admitted w/out AHL prior auth	0	0	0
Total	35	34	43
Total Admissions where SEH only Option			
due to COMP status	5	3	5
due to Invol COMM ER uninsured/straight only	1	2	2
due to Invol inpt m/s or psych uninsured/straight only	0	1	2
due to Vol uninsured at CPEP	0	1	0
due to transfer from comm inpt - need more tn 14 days	3	7	1
due to arrest	1	0	0
Total	10	14	10
% of Total	29%	41%	23%
Total eligible for either GSECH or PIW and not sent	25	23	33
Percent admitted to SEH who could have been Admitted to GSECH or PIW	71%	68%	77%
Total eligible for GSECH not sent	18	23	33
Total eligible for GSECH not sent - no reason noted	0	0	1
Total eligible for GSECH not send - no beds	7	5	20
Total eligible for GSECH not sent - clinical reason	10	8	10
Total eligible for GSECH not sent - other reason	1	10	2
Total eligible for PIW not sent	24	24	33
Total eligible for PIW not sent - no reason noted	2	0	0
Total eligible for PIW not send - no beds	4	3	12
Total eligible for PIW not sent - clinical reason	18	1	1
Total eligible for PIW not sent - other reason	0	20	20

Total eligible for GSECH or PIW and not sent is an unduplicated count  
 Break out of "eligible not sent GSECH" and "eligible not sent PIW" is a duplicated count as some consumers were eligible under both protocols but admitted under neither

Sep-08



# **EXHIBIT F**

## **SAINT ELIZABETHS HOSPITAL CONSTRUCTION STATUS REPORT – NOVEMBER 2007**

# St. Elizabeth's Hospital Project Monthly Summary Report



Month/Year: November 2007 Date: 28 November 2007

## Construction Manager Summary

- Push for as much roof installation before onset of winter; steel, metal deck slabs, masonry walls, plumbing and electrical work continue in all areas.

## Work Summary

### SEH

- Slab on grade nearly complete, small portion at the auditorium all that remains
- Masonry bearing wall installation complete
- Steel installation continues, 75% complete
- Steel and concrete deck installation on-going
- Brick veneer installation continues at both wings
- Overall completion, 35%

### RMB

- Demo and abatement on-going
- Schedule and pay application submission still pending

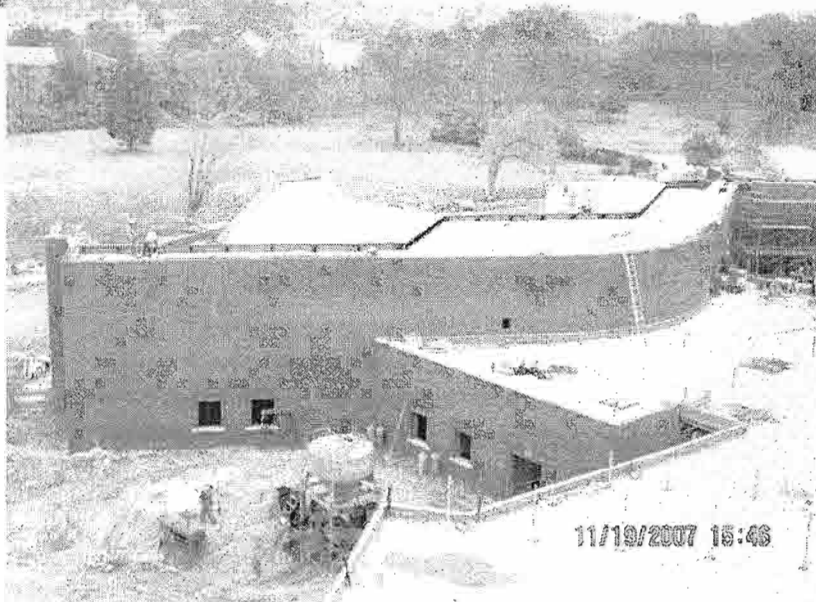
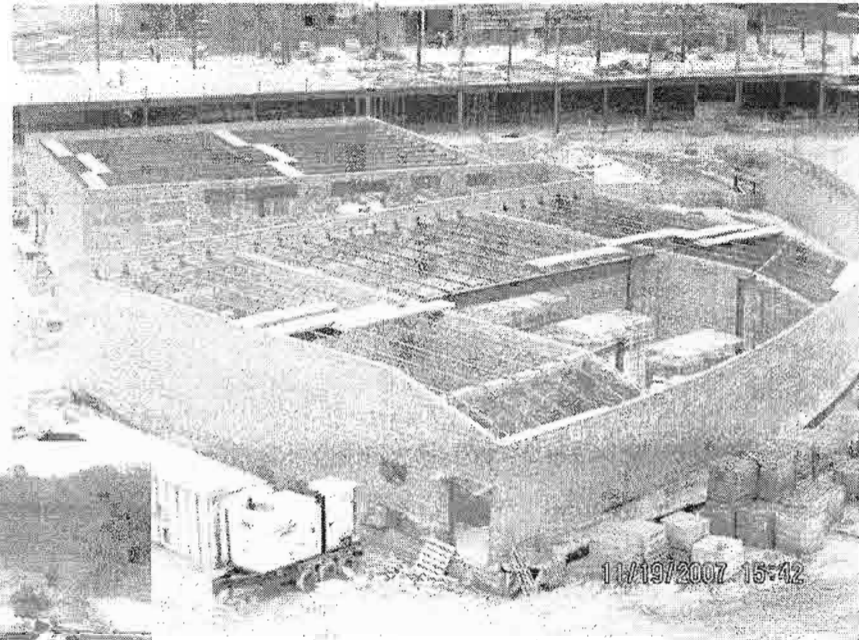
## Project Challenges SEH & RMB

- MEP coordination for all areas, on-going
- Waiting for design revisions for auditorium and transition ward
- Slow start to submittals from Forney/Manhattan
- PEPCO

# Project Progress Photos



**Gilbane**



**Top Left:** Civil and Auditorium from JHP rooftop

**Above:** Close up of Auditorium view from JHP rooftop

**Bottom:** Close up of Forensic Pod from JHP rooftop

# Project Controls and Budget Summary



## St. Elizabeth's New Hospital

- Original Contract Value: \$139,915,510
- Approved Changes: 26
- Current Contract Amount: \$141,676,278
- Pending Changes (OME): \$ 12,826,174
- Pending contract Value: \$154,502,452

## RMB, CT-7, CT-8

- Original Contract Value: \$13,247,000
- Approved Changes: 0
- Current Contract Value: \$13,247,000
- Pending Changes (OME): \$
- Pending Contract Value: \$

## Submittal Update (TBI Submittals)

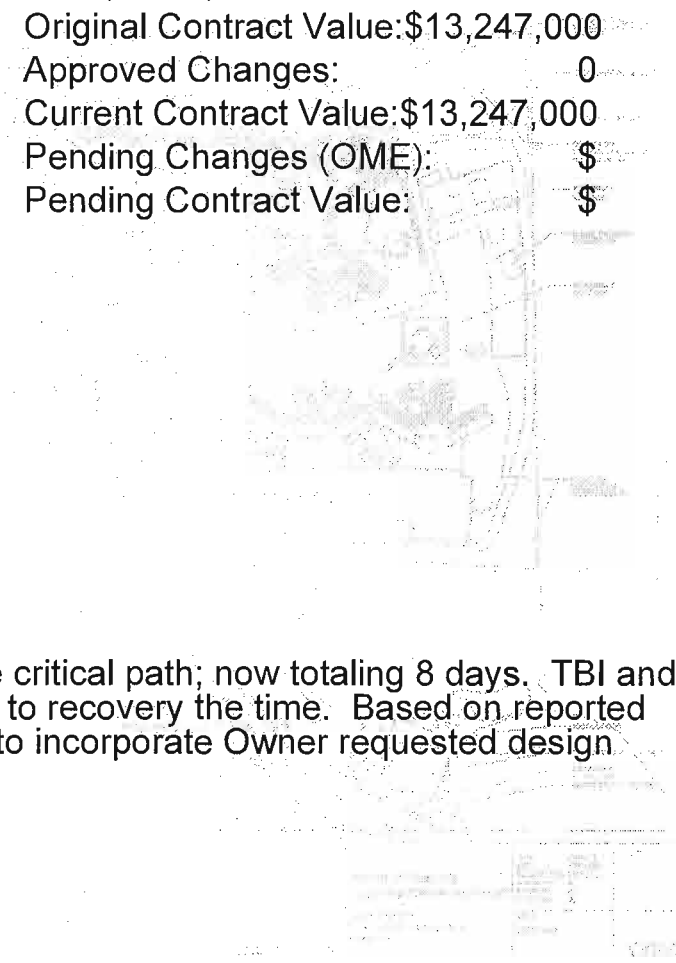
- Submittals Issued to Date: 471
- Submittals in Review: 27

## RFI Update (TBI RFI's)

- RFI's Issued to Date: 658
- RFI's In Review: 35

## Schedule Summary

- Schedule indicated a loss of 4 additional days off the critical path; now totaling 8 days. TBI and GBC will be reviewing the schedule for opportunities to recovery the time. Based on reported projections, a 3-6 month extension may be required to incorporate Owner requested design revisions.



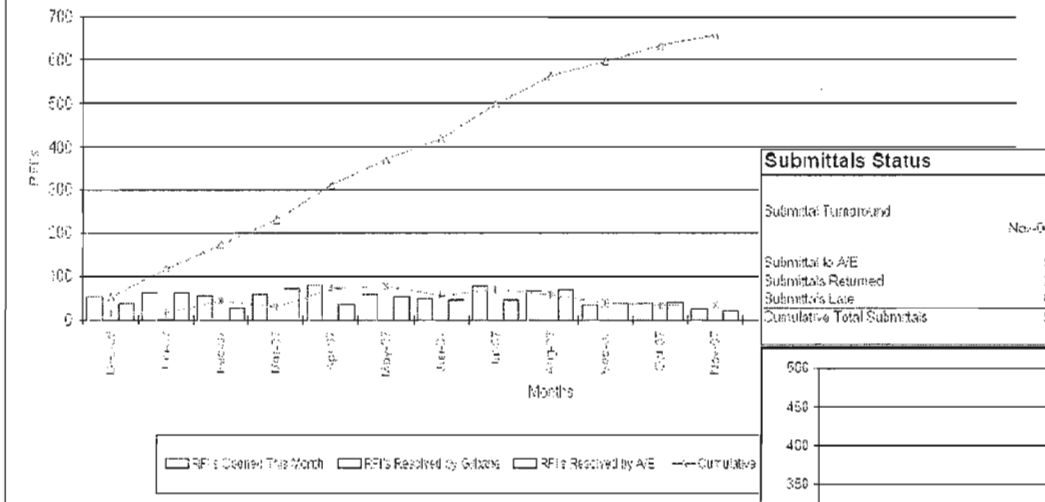
# Project Controls Review



## RFI Turnaround ST. ELIZABETH'S HOSPITAL Project 3207

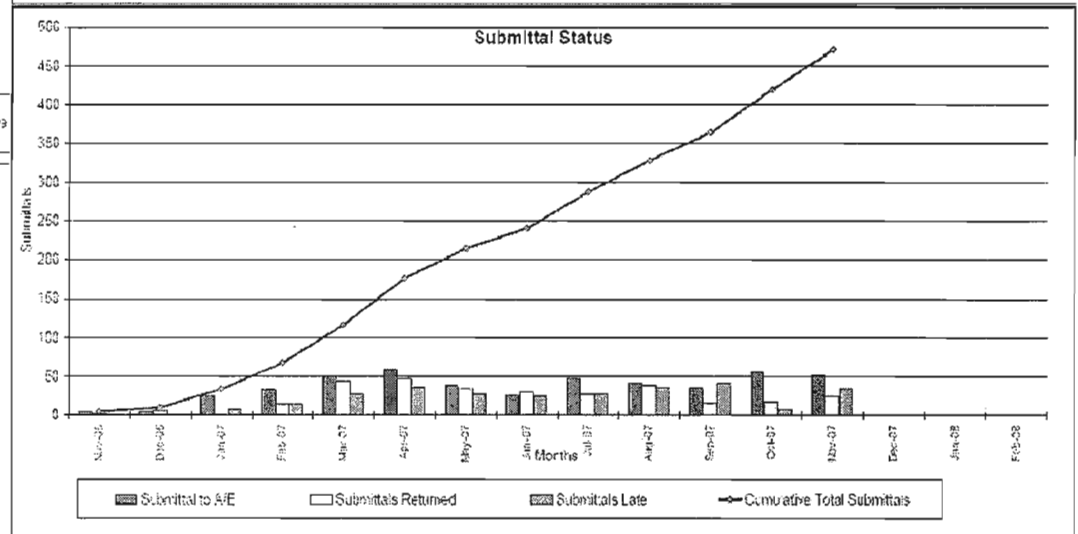
	Dec-06	Jan-07	Feb-07	Mar-07	Apr-07	May-07	Jun-07	Jul-07	Aug-07	Sep-07	Oct-07	Nov-07	Dec-07	Jan-08	Feb-08
RFIs Opened This Month	52	63	67	56	79	60	48	78	67	32	38	24			
RFIs Resolved by A/E	37	62	28	74	36	54	47	46	70	37	40	20			
Cumulative Total RFIs	62	116	173	232	311	371	419	497	564	605	634	658			
Total Open	16	16	44	26	72	78	56	70	68	39	33	25			

Chart 1. RFI Turnaround



## Submittals Status ST. ELIZABETH'S NEW HOSPITAL Project 3207

	Nov-06	Dec-06	Jan-07	Feb-07	Mar-07	Apr-07	May-07	Jun-07	Jul-07	Aug-07	Sep-07	Oct-07	Nov-07	Dec-07	Jan-08	Feb-08
Submittals Returned																
Submittals to A/E		5	5	24	33	50	59	38	26	47	41	36	55	51		
Submittals Late		2	6	1	15	44	47	34	30	27	39	16	18	24		
Cumulative Total Submittals		5	10	34	67	117	176	214	240	287	328	364	420	471		



# Schedule (activities scheduled for the month of November 2007)



Activity ID	SPCC	RESP	WING	LEVE	SEQ PODS	Activity Description	Orig Dur	% Comp	Rem Dur	Early Start	Early Finish	Total Float	2007 Q4	2008 Q1	2008 Q2	2008 Q3	2008 Q4	2009 Q1	2009 Q2	2009 Q3	
<b>MILESTONES / FINAL COMPLETION</b>																					
320		STL				Steel Structure Top Out	0	100	0		13NOV07A										
<b>BUILDING STRUCTURE</b>																					
17110		MASN	CIVI	2	17A	2nd Floor Masonry Walls	20	100	0	24SEP07A	15OCT07A										
42150		MASN	CIVI	1	P2	Masonry Load Bearing Walls	20	100	0	27SEP07A	04NOV07A										
16120		STL	CIVI	2	16B	Structural Steel	5	100	0	04OCT07A	18OCT07A										
17120		STL	CIVI	2	17A	Structural Steel	5	50	3	08OCT07A	07DEC07	4									
32120		MASN	CIVI	3	32C	3rd Floor Masonry Walls	20	100	0	08OCT07A	07NOV07A										
41150		MASN	CIVI	1	P1	Masonry Load Bearing Walls	20	40	12	08OCT07A	18DEC07	28									
13130		CONC	CIVI	2	13C	Roof Slab	5	100	0	16OCT07A	16OCT07A										
23160		STL	CIVI	1	23D	Structural Steel	5	100	0	16OCT07A	12NOV07A										
14130		CONC	CIVI	2	14B	Roof Slab	5	100	0	17OCT07A	24OCT07A										
14150		ELEC	CIVI	2	14B	Conduit Rough-In, Roof Slab	5	100	0	17OCT07A	24OCT07A										
33120		MASN	CIVI	3	33C	3rd Floor Load Bearing Masonry Walls	20	100	0	17OCT07A	21NOV07A										
21160		STL	CIVI	1	21D	Structural Steel	5	100	0	22OCT07A	16NOV07A										
8130		CONC	CIVI	2	8C	Roof Slab	5	100	0	24OCT07A	02NOV07A										
16130		CONC	CIVI	2	16B	Roof Slab	5	100	0	28OCT07A	02NOV07A										
16150		ELEC	CIVI	2	16B	Conduit Rough-In, Roof Slab	5	100	0	28OCT07A	02NOV07A										
27100		CONC	CIVI	2	27D	Concrete 2nd Floor Slab	5	100	0	12NOV07A	15NOV07A										
27110		ELEC	CIVI	2	27D	Conduit Rough-In, In-Slab	3	100	0	12NOV07A	15NOV07A										
42100		STL	CIVI	1	P2	Structural Steel	5	40	3	12NOV07A	08JAN08	28									
27120		MASN	CIVI	2	27D	2nd Floor Masonry Walls	20	100	0	15NOV07A	28NOV07A										
26100		CONC	CIVI	2	26D	Concrete 2nd Floor Slab	3	100	0	17NOV07A	21NOV07A										
32140		STL	CIVI	3	32C	Structural Steel	5	40	3	19NOV07A	21MAR08	13									
26110		ELEC	CIVI	2	26D	Conduit Rough-In, In-Slab	3	100	0	21NOV07A	21NOV07A										
33140		STL	CIVI	3	33C	Structural Steel	5	40	3	21NOV07A	26MAR08	20									
26120		MASN	CIVI	2	26D	2nd Floor Masonry Walls	20	40	12	27NOV07A	07JAN08	29									
27130		STL	CIVI	2	27D	Structural Steel	5	40	3	29NOV07A	23JAN08	25									

Start Date: 01SEP06  
 Finish Date: 08OCT09  
 Data Date: 01DEC07  
 Print Date: 04NOV07 07:28

Legend:  
 [ ] Early Bar  
 [ ] Progress Bar  
 [ ] Critical Activity

SR15  
 Tompkins Builders Inc.  
 St. Elizabeth - Update 11/30  
 Sheet 1 of 1

Date	Revision	Checked	Approved







# Schedule (activities scheduled for the month of November 2007 cont'd)



Activity ID	SPCC	RESP	WING	LEVE	SEQ PODS	Activity Description	Orig Dur	% Comp	Rem Dur	Early Start	Early Finish	Total Float	Gantt Chart								
													2007 Q4	Q1	Q2	2008 Q3			Q4	2009 Q1	
8635		FRPR	CIVI	2	8C	Spray Fireproof	5	100	0	05OCT07A	17OCT07A		[Gantt bar]								
7400		MASN	CIVI	1	7A	Scaffold for Non Load Bearing Masonry	5	100	0	08OCT07A	30NOV07A		[Gantt bar]								
7405		MASN	CIVI	1	7A	Non Load Bearing Masonry Walls	15	70	5	08OCT07A	26DEC07	7	[Gantt bar]								
3425		DUCT	CIVI	1	3B	Above Ceiling Duct Mains and Branches RI	20	70	6	09OCT07A	20DEC07	1	[Gantt bar]								
8430		PLUM	CIVI	1	6B	Above Ceiling Plumbing	10	80	2	15OCT07A	24DEC07	95	[Gantt bar]								
6440		ELEC	CIVI	1	6B	Electrical Feeder Rough-In	10	70	3	15OCT07A	26DEC07	95	[Gantt bar]								
7415		DOOR	CIVI	1	7A	Install Door Frames	5	50	3	15OCT07A	18DEC07	12	[Gantt bar]								
7420		ELEC	CIVI	1	7A	In Wall Electrical RI	15	50	8	17OCT07A	26DEC07	7	[Gantt bar]								
7430		PLUM	CIVI	1	7A	Above Ceiling Plumbing	10	70	3	17OCT07A	04JAN08	101	[Gantt bar]								
13835		FRPR	CIVI	2	13C	Spray Fireproof	5	100	0	18OCT07A	22OCT07A		[Gantt bar]								
1435		MECH	CIVI	1	1C	Above Ceiling Mechanical Pipe	10	100	0	22OCT07A	30NOV07A		[Gantt bar]								
2435		MECH	CIVI	1	2C	Above Ceiling Mechanical Pipe	10	100	0	22OCT07A	30NOV07A		[Gantt bar]								
3435		MECH	CIVI	1	3B	Above Ceiling Mechanical Pipe	10	50	5	22OCT07A	19DEC07	81	[Gantt bar]								
8430		PLUM	CIVI	2	8C	Above Ceiling Plumbing	10	50	5	22OCT07A	04APR08	1	[Gantt bar]								
8445		ELEC	CIVI	2	8C	Electrical Branch RI	15	80	6	22OCT07A	14APR08	20	[Gantt bar]								
7410		MECH	CIVI	1	7A	In Wall Mechanical	15	80	3	23OCT07A	18DEC07	10	[Gantt bar]								
14870		FRPR	CIVI	2	14B	SPray Fireproof	5	100	0	23OCT07A	02NOV07A		[Gantt bar]								
8400		MASN	CIVI	2	8C	Scaffold for Non Load Bearing Masonry	5	100	0	25OCT07A	30NOV07A		[Gantt bar]								
8405		MASN	CIVI	2	8C	Non Load Bearing Masonry Walls	15	80	6	25OCT07A	29FEB08	22	[Gantt bar]								
8420		ELEC	CIVI	2	8C	In Wall Electrical RI	15	60	6	25OCT07A	29FEB08	167	[Gantt bar]								
13400		MASN	CIVI	2	13C	Scaffold for Non Load Bearing Masonry	5	100	0	25OCT07A	30OCT07A		[Gantt bar]								
13405		MASN	CIVI	2	13C	Non Load Bearing Masonry Walls	15	60	6	25OCT07A	10MAR08	36	[Gantt bar]								
13430		PLUM	CIVI	2	13C	Above Ceiling Plumbing	10	50	5	25OCT07A	02MAY08	1	[Gantt bar]								
13445		ELEC	CIVI	2	13C	Electrical Branch RI	15	50	8	25OCT07A	14MAY08	18	[Gantt bar]								
6425		DUCT	CIVI	1	6B	Above Ceiling Duct Mains and Branches RI	20	70	6	29OCT07A	31DEC07	1	[Gantt bar]								
6445		ELEC	CIVI	1	6B	Electrical Branch RI	15	70	5	29OCT07A	28DEC07	110	[Gantt bar]								
8410		MECH	CIVI	2	8C	In Wall Mechanical	15	60	6	01NOV07A	29FEB08	22	[Gantt bar]								
8415		DOOR	CIVI	2	8C	Install Door Frames	5	80	1	01NOV07A	22FEB08	27	[Gantt bar]								
13410		MECH	CIVI	2	13C	In Wall Mechanical	15	60	6	01NOV07A	10MAR08	36	[Gantt bar]								
13415		DOOR	CIVI	2	13C	Install Door Frames	5	80	1	01NOV07A	03MAR08	41	[Gantt bar]								
13420		ELEC	CIVI	2	13C	In Wall Electrical RI	15	60	6	01NOV07A	10MAR08	166	[Gantt bar]								
2485		ELEC	CIVI	1	2C	Pull Feeder Wire	7	50	4	05NOV07A	20DEC07	225	[Gantt bar]								
2470		ELEC	CIVI	1	2C	Pull Branch Wire	5	50	3	05NOV07A	26DEC07	227	[Gantt bar]								
16670		FRPR	CIVI	2	16B	Spray Fireproof	5	100	0	05NOV07A	09NOV07A		[Gantt bar]								
7425		DUCT	CIVI	1	7A	Above Ceiling Duct Mains and Branches RI	20	10	18	06NOV07A	25JAN08	1	[Gantt bar]								
7445		ELEC	CIVI	1	7A	Electrical Branch RI	15	70	5	06NOV07A	08JAN08	124	[Gantt bar]								

# Schedule (activities scheduled for the month of November 2007 cont'd)



Activity ID	SPCC	RESP	WING	LEVE	SEQ PODS	Activity Description	Orig Dur	% Comp	Rem Dur	Early Start	Early Finish	Total Float	2007-2009 Gantt																		
													2007 Q1	2007 Q2	2007 Q3	2007 Q4	2008 Q1	2008 Q2	2008 Q3	2008 Q4	2009 Q1	2009 Q2	2009 Q3								
3465		ELEC	CIVI	1	3B	Pull Feeder Wire	7	30	5	12NOV07A	24DEC07	199																			
3470		ELEC	CIVI	1	3B	Pull Branch Wire	5	30	4	12NOV07A	31DEC07	199																			
23405		FRPR	CIVI	1	23D	Spray Fireproof	5	100	0	13NOV07A	30NOV07A																				
6435		MECH	CIVI	1	6B	Above Ceiling Mechanical Pipe	10	50	5	19NOV07A	28DEC07	95																			
7435		MECH	CIVI	1	7A	Above Ceiling Mechanical Pipe	10	30	7	19NOV07A	10JAN08	104																			
14400		MASN	CIVI	2	14B	Scaffold for Non Load Bearing Masonry	5	100	0	19NOV07A	30NOV07A																				
14405		MASN	CIVI	2	14B	Non Load Bearing Masonry Walls	15	100	0	19NOV07A	30NOV07A																				
14410		MECH	CIVI	2	14B	In Wall Mechanical	15	100	0	19NOV07A																					
14415		DOOR	CIVI	2	14B	Install Door Frames	5	100	0	19NOV07A																					
14420		ELEC	CIVI	2	14B	In Wall Electrical RI	15	100	0	19NOV07A																					
14430		PLUM	CIVI	2	14B	Above Ceiling Plumbing	10	30	7	19NOV07A	28MAY08	45																			
14440		MECH	CIVI	2	14B	Above Ceiling Mechanical Pipe	10	20	8	19NOV07A	29MAY08	45																			
14445		ELEC	CIVI	2	14B	Electrical Feeder Rough-In	10	20	8	19NOV07A	29MAY08	45																			
14455		ELEC	CIVI	2	14B	Electrical Branch RI	15	20	12	19NOV07A	04JUN08	53																			
14425		DUCT	CIVI	2	14B	Above Ceiling Duct Mains and Branches RI	20	25	15	26NOV07A	09JUN08	9																			
14435		DRYW	CIVI	2	14B	Metal Stud Partitions	10	10	9	26NOV07A	21MAR08	81																			
16400		MASN	CIVI	2	16B	Scaffold for Non Load Bearing Masonry	5	75	1	26NOV07A	11MAR08	56																			
16405		MASN	CIVI	2	16B	Non Load Bearing Masonry Walls	15	75	4	26NOV07A	17MAR08	56																			
16410		MECH	CIVI	2	16B	In Wall Mechanical	15	75	4	26NOV07A	17MAR08	56																			
16415		DOOR	CIVI	2	16B	Install Door Frames	5	75	1	26NOV07A	12MAR08	59																			
16420		ELEC	CIVI	2	16B	In Wall Electrical RI	15	75	4	26NOV07A	17MAR08	169																			
16425		DUCT	CIVI	2	16B	Above Ceiling Duct Mains and Branches RI	20	25	15	26NOV07A	30JUN08	9																			
16430		PLUM	CIVI	2	16B	Above Ceiling Plumbing	10	25	8	26NOV07A	19JUN08	34																			
16440		MECH	CIVI	2	16B	Above Ceiling Mechanical Pipe	10	25	8	26NOV07A	19JUN08	34																			
16445		ELEC	CIVI	2	16B	Electrical Feeder Rough-In	10	25	8	26NOV07A	19JUN08	34																			
16455		ELEC	CIVI	2	16B	Electrical Branch RI	15	25	11	26NOV07A	24JUN08	43																			
10430		PLUM	FORE	1	10H	Above Ceiling Plumbing	10	60	4	23OCT06A	15JAN08	50																			
5400		MASN	FORE	1	5J	Scaffold for Non Load Bearing Masonry	5	100	0	08SEP07A	30NOV07A																				
5405		MASN	FORE	1	5J	Non Load Bearing Masonry Walls	15	90	2	08SEP07A	06DEC07	-6																			
5410		MECH	FORE	1	5J	In Wall Mechanical	15	93	1	08SEP07A	06DEC07	72																			
5415		DOOR	FORE	1	5J	Install Door Frames	5	100	0	08SEP07A	30NOV07A																				
5420		ELEC	FORE	1	5J	In Wall Electrical RI	15	90	2	08SEP07A	06DEC07	62																			
4405		MASN	FORE	1	4J	Non Load Bearing Masonry Walls	15	90	2	19SEP07A	04DEC07	-8																			
4410		MECH	FORE	1	4J	In Wall Mechanical	15	93	1	19SEP07A	04DEC07	71																			
4415		DOOR	FORE	1	4J	Install Door Frames	5	100	0	19SEP07A	30NOV07A																				

# Schedule (activities scheduled for the month of November 2007 cont'd)



Activity ID	SPCC	RESP	WING	LEVE	SEQ PODS	Activity Description	Orig Dur	% Comp	Rem Dur	Early Start	Early Finish	Total Float	2007											
													Q4	Q1	Q2	Q3	Q4	Q1	Q2	Q3				
4420		ELEC	FORE	1	4J	In Wall Electrical RI	15	90	2	19SEP07A	04DEC07	86												
4440		ELEC	FORE	1	4J	Electrical Feeder Rough-In	10	80	2	04OCT07A	14FEB08	3												
4445		ELEC	FORE	1	4J	Electrical Branch RI	15	80	3	04OCT07A	15FEB08	15												
5425		DUCT	FORE	1	5J	Above Ceiling Duct Mains and Branches RI	20	80	4	04OCT07A	12DEC07	-8												
9400		MASN	FORE	1	9F	Scaffold for Non Load Bearing Masonry	5	100	0	09OCT07A	30NOV07A													
9405		MASN	FORE	1	9F	Non Load Bearing Masonry Walls	15	90	2	09OCT07A	10DEC07	-4												
9415		DOOR	FORE	1	9F	Install Door Frames	5	80	1	09OCT07A	07DEC07	-3												
4430		PLUM	FORE	1	4J	Above Ceiling Plumbing	10	80	2	11OCT07A	07FEB08	8												
5430		PLUM	FORE	1	5J	Above Ceiling Plumbing	10	80	2	15OCT07A	10DEC07	52												
5440		ELEC	FORE	1	5J	Electrical Feeder Rough-In	10	80	2	15OCT07A	10DEC07	52												
5445		ELEC	FORE	1	5J	Electrical Branch RI	15	80	3	15OCT07A	11DEC07	59												
4425		DUCT	FORE	1	4J	Above Ceiling Duct Mains and Branches RI	20	80	4	18OCT07A	08DEC07	-8												
9410		MECH	FORE	1	9F	In Wall Mechanical	15	93	1	17OCT07A	07DEC07	114												
9420		ELEC	FORE	1	9F	In Wall Electrical RI	15	90	2	17OCT07A	10DEC07	127												
9430		PLUM	FORE	1	9F	Above Ceiling Plumbing	10	70	3	17OCT07A	17DEC07	105												
9440		MECH	FORE	1	9F	Above Ceiling Mechanical Pipe	10	100	0	17OCT07A	30NOV07A													
9445		ELEC	FORE	1	9F	Electrical Feeder Rough-In	10	70	3	17OCT07A	17DEC07	105												
9450		ELEC	FORE	1	9F	Electrical Branch RI	15	70	5	17OCT07A	19DEC07	120												
10400		MASN	FORE	1	10H	Scaffold for Non Load Bearing Masonry	5	90	1	18OCT07A	11DEC07	11												
10405		MASN	FORE	1	10H	Non Load Bearing Masonry Walls	15	90	2	18OCT07A	13DEC07	11												
10420		ELEC	FORE	1	10H	In Wall Electrical RI	15	90	2	22OCT07A	13DEC07	87												
10435		MECH	FORE	1	10H	Above Ceiling Mechanical Pipe	10	100	0	22OCT07A	30NOV07A													
10440		ELEC	FORE	1	10H	Electrical Feeder Rough-In	10	80	4	22OCT07A	15JAN08	50												
10445		ELEC	FORE	1	10H	Electrical Branch RI	15	80	6	22OCT07A	17JAN08	64												
15400		MASN	FORE	1	15F	Scaffold for Non Load Bearing Masonry	5	80	1	22OCT07A	14DEC07	26												
15405		MASN	FORE	1	15F	Non Load Bearing Masonry Walls	15	80	3	22OCT07A	19DEC07	26												
15410		MECH	FORE	1	15F	In Wall Mechanical	15	80	3	22OCT07A	19DEC07	26												
15415		DOOR	FORE	1	15F	Install Door Frames	5	80	1	22OCT07A	17DEC07	28												
15420		ELEC	FORE	1	15F	In Wall Electrical RI	15	80	3	22OCT07A	19DEC07	208												
15430		PLUM	FORE	1	15F	Above Ceiling Plumbing	10	80	2	22OCT07A	13FEB08	84												
15445		ELEC	FORE	1	15F	Electrical Feeder Rough-In	10	50	6	22OCT07A	19FEB08	84												
15455		ELEC	FORE	1	15F	Electrical Branch RI	15	50	8	22OCT07A	21FEB08	96												
15465		FRPR	FORE	1	15F	Spray Fireproof	5	100	0	22OCT07A	26OCT07A													
4435		MECH	FORE	1	4J	Above Ceiling Mechanical Pipe	10	100	0	05NOV07A	30NOV07A													
4465		ELEC	FORE	1	4J	Pull Feeder Wire	7	0	7	12NOV07A	25FEB08	9												
4470		ELEC	FORE	1	4J	Pull Branch Wire	5	0	5	12NOV07A	03MAR08	9												

# Schedule (activities scheduled for the month of November 2007 cont'd)



Activity ID	SPCC	RESP	WING	LEVE	SEQ PODS	Activity Description	Orig Dur	% Comp	Rem Dur	Early Start	Early Finish	Total Float	2007									
													Q4	Q1	Q2	Q3	Q4	Q1	Q2	Q3		
5435		MECH	FORE	1	5J	Above Ceiling Mechanical Pipe	10	100	0	12NOV07A	30NOV07A		■									
5465		ELEC	FORE	1	5J	Pull Feeder Wire	7	50	4	12NOV07A	14DEC07	56	■									
5470		ELEC	FORE	1	5J	Pull Branch Wire	5	50	3	12NOV07A	18DEC07	56	■									
9425		DUCT	FORE	1	9F	Above Ceiling Duct Mains and Branches RI	20	10	18	12NOV07A	09JAN08	-8	■									
10425		DUCT	FORE	1	10H	Above Ceiling Duct Mains and Branches RI	20	10	18	12NOV07A	04FEB08	-8	■									
20400		MASN	FORE	1	20H	Scaffold for Non Load Bearing Masonry	5	50	3	12NOV07A	17DEC07	65	■									
20405		MASN	FORE	1	20H	Non Load Bearing Masonry Walls	15	50	8	12NOV07A	09JAN08	58	■									
20410		MECH	FORE	1	20H	In Wall Mechanical	15	50	8	12NOV07A	28DEC07	65	■									
20415		DOOR	FORE	1	20H	Install Door Frames	5	50	3	12NOV07A	20DEC07	70	■									
20420		ELEC	FORE	1	20H	In Wall Electrical RI	15	50	8	12NOV07A	09JAN08	193	■									
20440		ELEC	FORE	1	20H	Electrical Feeder Rough-In	10	30	7	12NOV07A	30APR08	17	■									
20445		ELEC	FORE	1	20H	Electrical Branch RI	15	30	11	12NOV07A	06MAY08	26	■									
20635		FRPR	FORE	1	20H	Spray Fireproof	5	100	0	12NOV07A	15NOV07A		■									
15440		MECH	FORE	1	15F	Above Ceiling Mechanical Pipe	10	0	10	19NOV07A	25FEB08	84	■									
<b>Total</b>							<b>433</b>	<b>73</b>	<b>146</b>	<b>23OCT06A</b>	<b>30JUN08</b>	<b>143</b>										

# **EXHIBIT G**

## **SAINT ELIZABETHS HOSPITAL CONSTRUCTION STATUS REPORT – DECEMBER 2007**

# St. Elizabeth's Hospital Project Monthly Summary Report



Month/Year: December 2007 Date: 30 December 2007

## Construction Manager Summary

•

## Work Summary

### SEH

- Slab on grade complete
- Steel installation continues, 85% complete
- Steel and concrete deck installation on-going, nearing completion
- Brick veneer installation continues at both wings, including interior walls
- Overall completion, 40%

### RMB (infrastructure and utilities only)

- Demo on-going, abatement complete
- Schedule and pay application submission still pending; October 07 pay app processed

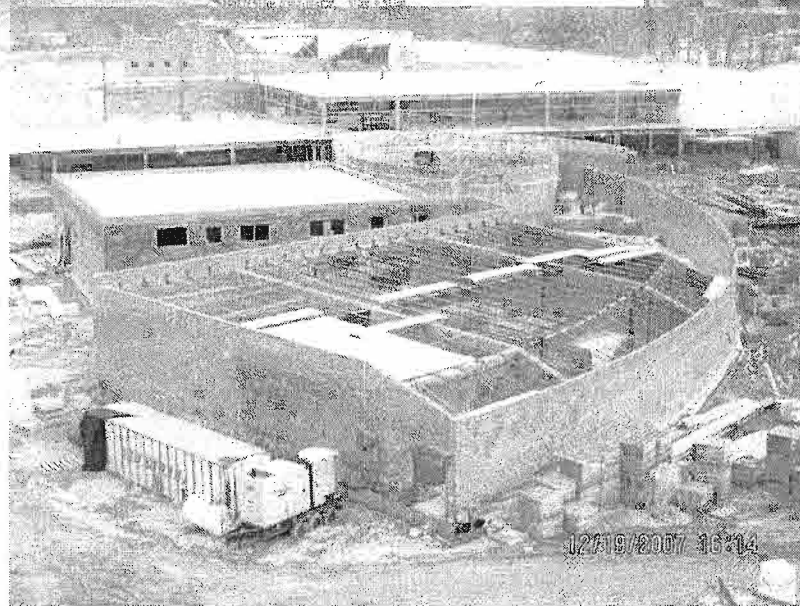
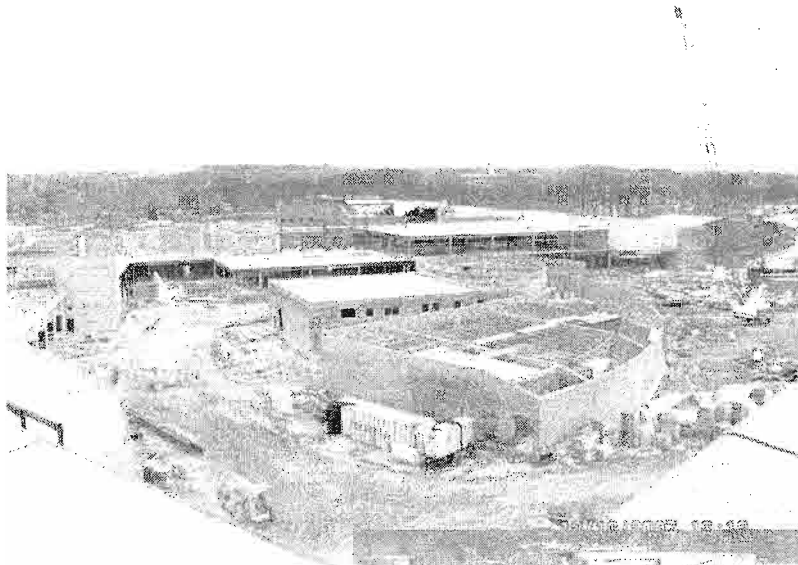
### Project Challenges SEH & RMB (infrastructure and utilities only)

- MEP coordination for all areas, on-going
- Washington Gas
- Slow start to submittals from Forney/Manhattan
- PEPCO

# Project Progress Photos



**Gilbane**



**Top Left: Work continues  
at Aud/Civil areas  
Above: Green Roof at  
Forensic side  
Bottom: Close-up of  
auditorium and MEP  
spaces**

# Project Controls and Budget Summary



## St. Elizabeth's New Hospital

- Original Contract Value: \$139,915,510
- Approved Changes: 31
- Current Contract Amount: \$142,086,641
- Pending Changes (OME): \$ 12,826,174
- Pending contract Value: \$154,912,815

## RMB, CT-7, CT-8

- Original Contract Value: \$13,247,000
- Approved Changes: 0
- Current Contract Value: \$13,247,000
- Pending Changes (OME): \$
- Pending Contract Value: \$

## Submittal Update (TBI Submittals)

- Submittals Issued to Date: 500
- Submittals in Review: 42

## RFI Update (TBI RFI's)

- RFI's Issued to Date: 699
- RFI's In Review: 16

## Schedule Summary

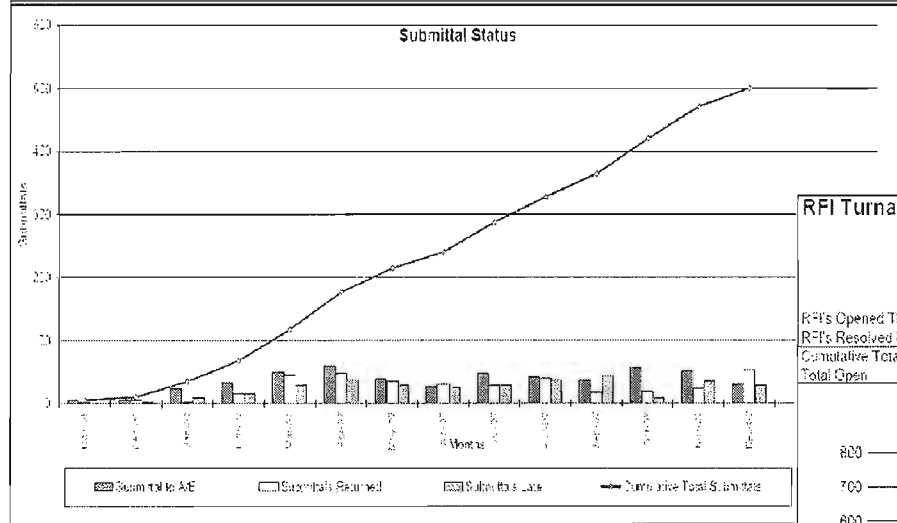
- The schedule has experienced some loss in time, as expected with design revisions, rework, winter weather, and generator power. Smaller impacts have been negotiated to result in no time extension to the schedule.



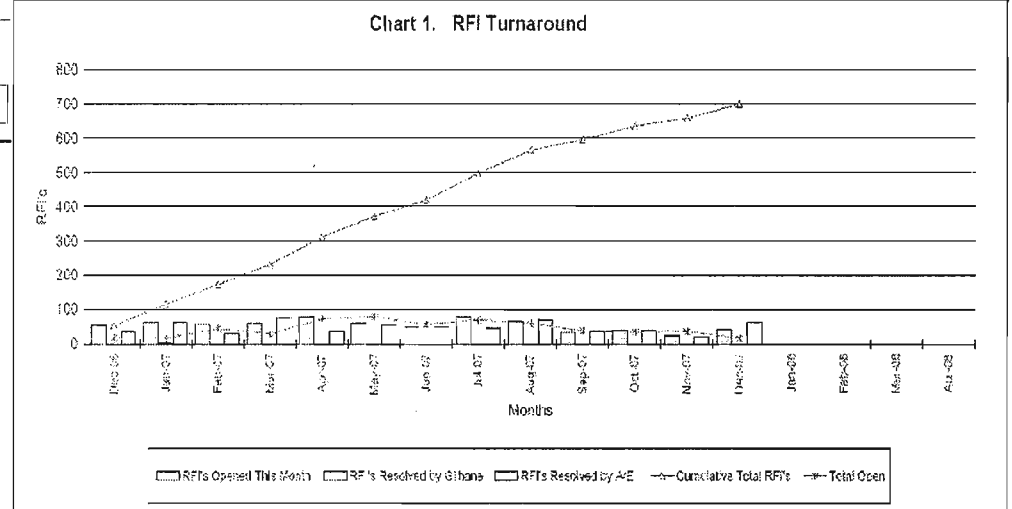
# Project Controls Review



Submittals Status		ST. ELIZABETH'S NEW HOSPITAL														Project 3207	
Submittals This Month																	
		Nov-06	Dec-06	Jan-07	Feb-07	Mar-07	Apr-07	May-07	Jun-07	Jul-07	Aug-07	Sep-07	Oct-07	Nov-07	Dec-07	Jan-08	Feb-08
Submittals to A/E		5	4	24	15	50	59	38	26	47	41	36	56	51	29		
Submittals Returned		2	6	1	15	44	47	34	30	27	39	16	16	24	52		
Submittals Late		0	2	8	15	26	36	28	25	27	35	42	8	34	27		
Cumulative Total Submittals		5	16	34	67	117	176	214	240	287	328	364	420	471	500		



RFI Turnaround		ST. ELIZABETH'S HOSPITAL														Project 3207		
RFIs Opened This Month																		
		Dec-06	Jan-07	Feb-07	Mar-07	Apr-07	May-07	Jun-07	Jul-07	Aug-07	Sep-07	Oct-07	Nov-07	Dec-07	Jan-08	Feb-08	Mar-08	Apr-08
RFIs Opened This Month		53	63	67	59	79	60	49	78	67	62	38	24	41				
RFIs Resolved by A/E		37	32	29	74	36	54	47	48	70	57	40	20	82				
Cumulative Total RFIs		53	115	173	232	311	371	419	497	564	660	694	658	698				
Total Open		16	18	44	26	72	78	53	70	58	38	33	35	18				



# Schedule (activities scheduled for the month of December 2007)



Activity ID	RESP	WING	LEVE	SEQ PODS	Activity Description	Orig Dur	% Comp	Rem Dur	Early Start	Early Finish	Total Float	2007			2008			2009																															
												Q4	Q1	Q2	Q3	Q4	Q1	Q2	Q3																														
<b>REQUIREMENTS</b>																																																	
1405	MASN	CIVI	1	1C	Non Load Bearing Masonry Walls	15	95	1	30JUL07A	03DEC07	1																																						
1415	MECH	CIVI	1	1C	In Wall Mechanical	15	95	1	30JUL07A	03DEC07	68																																						
1430	PLUM	CIVI	1	1C	Above Ceiling Plumbing	10	90	1	10SEP07A	03DEC07	49																																						
1425	DUCT	CIVI	1	1C	Above Ceiling Duct Mains and Branches RI	20	80	4	27SEP07A	06DEC07	1																																						
1440	ELEC	CIVI	1	1C	Electrical Feeder Rough-In	10	80	2	27SEP07A	04DEC07	49																																						
1445	ELEC	CIVI	1	1C	Electrical Branch RI	80	50	8	27SEP07A	12DEC07	61																																						
1460	ELEC	CIVI	1	1C	Pull Feeder Wire	7	50	4	27SEP07A	10DEC07	221																																						
1475	ELEC	CIVI	1	1C	Pull Branch Wire	5	40	3	27SEP07A	17DEC07	219																																						
<b>EXPENSES</b>																																																	
2405	MASN	CIVI	1	2C	Non Load Bearing Masonry Walls	15	87	2	24AUG07A	05DEC07	2																																						
2410	MECH	CIVI	1	2C	In Wall Mechanical	15	90	2	24AUG07A	05DEC07	2																																						
2415	DOOR	CIVI	1	2C	Install Door Frames	5	95	0	24AUG07A	03DEC07	4																																						
2420	ELEC	CIVI	1	2C	In Wall Electrical RI	15	95	1	24AUG07A	04DEC07	3																																						
2430	PLUM	CIVI	1	2C	Above Ceiling Plumbing	10	75	3	17SEP07A	11DEC07	65																																						
2425	DUCT	CIVI	1	2C	Above Ceiling Duct Mains and Branches RI	20	80	4	18SEP07A	12DEC07	1																																						
2440	ELEC	CIVI	1	2C	Electrical Feeder Rough-In	10	40	6	24SEP07A	14DEC07	65																																						
2445	ELEC	CIVI	1	2C	Electrical Branch RI	15	80	3	24SEP07A	11DEC07	82																																						
2465	ELEC	CIVI	1	2C	Pull Feeder Wire	7	50	4	05NOV07A	20DEC07	225																																						
2470	ELEC	CIVI	1	2C	Pull Branch Wire	5	50	3	05NOV07A	26DEC07	227																																						
<b>COMPLETION</b>																																																	
3405	MASN	CIVI	1	3B	Non Load Bearing Masonry Walls	15	80	3	05SEP07A	10DEC07	6																																						
3410	MECH	CIVI	1	3B	In Wall Mechanical	15	80	3	05SEP07A	10DEC07	6																																						
3420	ELEC	CIVI	1	3B	In Wall Electrical RI	15	80	3	05SEP07A	10DEC07	209																																						
3430	PLUM	CIVI	1	3B	Above Ceiling Plumbing	10	70	3	24SEP07A	17DEC07	61																																						
3440	ELEC	CIVI	1	3B	Electrical Feeder Rough-In	10	70	3	24SEP07A	17DEC07	61																																						
3445	ELEC	CIVI	1	3B	Electrical Branch RI	15	70	5	24SEP07A	18DEC07	96																																						
3425	DUCT	CIVI	1	3B	Above Ceiling Duct Mains and Branches RI	20	70	6	09OCT07A	20DEC07	1																																						
3200	MASN	CIVI	1	3B	Ext Veneer Masonry Walls	15	10	14	17OCT07A	24DEC07	41																																						
3435	MECH	CIVI	1	3B	Above Ceiling Mechanical Pipe	10	50	5	22OCT07A	19DEC07	61																																						
3465	ELEC	CIVI	1	3B	Pull Feeder Wire	7	30	5	12NOV07A	24DEC07	199																																						
Start Date: 01SEP05 Finish Date: 09OCT09 Data Date: 01DEC07 Rev: 04 JAN 08 08 32												01SEP05 <input type="checkbox"/> <b>Early Bar</b> 09OCT09 <input type="checkbox"/> <b>Finish Bar</b> 01DEC07 <input type="checkbox"/> <b>Progress Bar</b> 04 JAN 08 08 32 <input type="checkbox"/> <b>Critical Activity</b>			SB10 Tompkins Builders Inc. St Elizabeth - Update 11/30			Sheet 1 of 5			<table border="1"> <thead> <tr> <th>Date</th> <th>Revision</th> <th>Checked</th> <th>Approved</th> </tr> </thead> <tbody> <tr><td> </td><td> </td><td> </td><td> </td></tr> <tr><td> </td><td> </td><td> </td><td> </td></tr> <tr><td> </td><td> </td><td> </td><td> </td></tr> <tr><td> </td><td> </td><td> </td><td> </td></tr> </tbody> </table>									Date	Revision	Checked	Approved																
Date	Revision	Checked	Approved																																														
© Primavera Systems, Inc.																																																	

# Schedule (activities scheduled for the month of December 2007 cont'd)



Activity ID	RESP	WING	LEVE	SEQ PODS	Activity Description	Orig Dur	% Comp	Rem Dur	Early Start	Early Finish	Total Float	2007											
												Q4	Q1	Q2	Q3	Q4	Q1	Q2	Q3				
3470	ELEC	CIVI	1	3B	Pull Branch Wire	5	30	4	12NOV07A	31DEC07	199	Pull Branch Wire											
<b>Non Load Bearing Masonry Walls</b>																							
4405	MASN	FORE	1	4J	Non Load Bearing Masonry Walls	15	90	2	19SEP07A	04DEC07	-8	Non Load Bearing Masonry Walls											
4410	MECH	FORE	1	4J	In Wall Mechanical	15	93	1	19SEP07A	04DEC07	71	In Wall Mechanical											
4420	ELEC	FORE	1	4J	In Wall Electrical RI	15	90	2	19SEP07A	04DEC07	66	In Wall Electrical RI											
4440	ELEC	FORE	1	4J	Electrical Feeder Rough-In	10	80	2	04OCT07A	14FEB08	3	Electrical Feeder Rough-In											
4445	ELEC	FORE	1	4J	Electrical Branch RI	15	80	3	04OCT07A	15FEB08	15	Electrical Branch RI											
4430	PLUM	FORE	1	4J	Above Ceiling Plumbing	10	80	2	11OCT07A	07FEB08	8	Above Ceiling Plumbing											
4425	DUCT	FORE	1	4J	Above Ceiling Duct Mains and Branches RI	20	80	4	16OCT07A	06DEC07	-8	Above Ceiling Duct Mains and Branches RI											
4465	ELEC	FORE	1	4J	Pull Feeder Wire	7	0	7	12NOV07A	25FEB08	9	Pull Feeder Wire											
4470	ELEC	FORE	1	4J	Pull Branch Wire	5	0	5	12NOV07A	03MAR08	9	Pull Branch Wire											
<b>Non Load Bearing Masonry Walls</b>																							
5405	MASN	FORE	1	5J	Non Load Bearing Masonry Walls	15	90	2	08SEP07A	06DEC07	-6	Non Load Bearing Masonry Walls											
5410	MECH	FORE	1	5J	In Wall Mechanical	15	93	1	08SEP07A	06DEC07	72	In Wall Mechanical											
5420	ELEC	FORE	1	5J	In Wall Electrical RI	15	90	2	08SEP07A	06DEC07	62	In Wall Electrical RI											
5425	DUCT	FORE	1	5J	Above Ceiling Duct Mains and Branches RI	20	80	4	04OCT07A	12DEC07	-8	Above Ceiling Duct Mains and Branches RI											
5430	PLUM	FORE	1	5J	Above Ceiling Plumbing	10	80	2	15OCT07A	10DEC07	52	Above Ceiling Plumbing											
5440	ELEC	FORE	1	5J	Electrical Feeder Rough-In	10	80	2	15OCT07A	10DEC07	52	Electrical Feeder Rough-In											
5445	ELEC	FORE	1	5J	Electrical Branch RI	15	80	3	15OCT07A	11DEC07	59	Electrical Branch RI											
5465	ELEC	FORE	1	5J	Pull Feeder Wire	7	50	4	12NOV07A	14DEC07	58	Pull Feeder Wire											
5470	ELEC	FORE	1	5J	Pull Branch Wire	5	50	3	12NOV07A	19DEC07	58	Pull Branch Wire											
<b>Above Ceiling Plumbing</b>																							
6405	MASN	CIVI	1	6B	Non Load Bearing Masonry Walls	15	80	3	26SEP07A	13DEC07	7	Non Load Bearing Masonry Walls											
6430	PLUM	CIVI	1	6B	Above Ceiling Plumbing	10	80	2	15OCT07A	24DEC07	95	Above Ceiling Plumbing											
6440	ELEC	CIVI	1	6B	Electrical Feeder Rough-In	10	70	3	15OCT07A	26DEC07	95	Electrical Feeder Rough-In											
6425	DUCT	CIVI	1	6B	Above Ceiling Duct Mains and Branches RI	20	70	6	29OCT07A	31DEC07	1	Above Ceiling Duct Mains and Branches RI											
6445	ELEC	CIVI	1	6B	Electrical Branch RI	15	70	5	29OCT07A	28DEC07	110	Electrical Branch RI											
6435	MECH	CIVI	1	6B	Above Ceiling Mechanical Pipe	10	50	5	19NOV07A	28DEC07	95	Above Ceiling Mechanical Pipe											
<b>Non Load Bearing Masonry Walls</b>																							
7405	MASN	CIVI	1	7A	Non Load Bearing Masonry Walls	15	70	5	08OCT07A	28DEC07	7	Non Load Bearing Masonry Walls											
7415	DOOR	CIVI	1	7A	Install Door Frames	5	50	3	15OCT07A	18DEC07	12	Install Door Frames											
7420	ELEC	CIVI	1	7A	In Wall Electrical RI	15	50	8	17OCT07A	28DEC07	7	In Wall Electrical RI											
7430	PLUM	CIVI	1	7A	Above Ceiling Plumbing	10	70	3	17OCT07A	04JAN08	101	Above Ceiling Plumbing											
7410	MECH	CIVI	1	7A	In Wall Mechanical	15	80	3	23OCT07A	18DEC07	10	In Wall Mechanical											
7425	DUCT	CIVI	1	7A	Above Ceiling Duct Mains and Branches RI	20	10	18	08NOV07A	25JAN08	1	Above Ceiling Duct Mains and Branches RI											
7445	ELEC	CIVI	1	7A	Electrical Branch RI	15	70	5	06NOV07A	08JAN08	124	Electrical Branch RI											
7435	MECH	CIVI	1	7A	Above Ceiling Mechanical Pipe	10	30	7	19NOV07A	10JAN08	104	Above Ceiling Mechanical Pipe											

# Schedule (activities scheduled for the month of December 2007 cont'd)



Activity ID	RESP	WING	LEVE	SEQ PODS	Activity Description	Orig Dur	% Comp	Rem Dur	Early Start	Early Finish	Total Float	2007-2009 Gantt Chart								
												2007 Q4	Q1	Q2	2008 Q3	Q4	2009 Q1	Q2	Q3	
<b>Sequence 9B</b>																				
8430	PLUM	CIVI	2	8C	Above Ceiling Plumbing	10	50	5	22OCT07A	04APR08	1	Above Ceiling Plumbing								
8445	ELEC	CIVI	2	8C	Electrical Branch RI	15	60	6	22OCT07A	14APR08	20	Electrical Branch RI								
8405	MASN	CIVI	2	8C	Non Load Bearing Masonry Walls	15	80	6	25OCT07A	29FEB08	22	Non Load Bearing Masonry Walls								
8420	ELEC	CIVI	2	8C	In Wall Electrical RI	15	60	6	25OCT07A	29FEB08	167	In Wall Electrical RI								
8410	MECH	CIVI	2	8C	In Wall Mechanical	15	60	6	01NOV07A	29FEB08	22	In Wall Mechanical								
8415	DOOR	CIVI	2	8C	Install Door Frames	5	80	1	01NOV07A	22FEB08	27	Install Door Frames								
<b>Sequence 9F</b>																				
9405	MASN	FORE	1	9F	Non Load Bearing Masonry Walls	15	90	2	09OCT07A	10DEC07	-4	Non Load Bearing Masonry Walls								
9415	DOOR	FORE	1	9F	Install Door Frames	5	90	1	09OCT07A	07DEC07	-3	Install Door Frames								
9410	MECH	FORE	1	9F	In Wall Mechanical	15	93	1	17OCT07A	07DEC07	114	In Wall Mechanical								
9420	ELEC	FORE	1	9F	In Wall Electrical RI	15	90	2	17OCT07A	10DEC07	127	In Wall Electrical RI								
9430	PLUM	FORE	1	9F	Above Ceiling Plumbing	10	70	3	17OCT07A	17DEC07	105	Above Ceiling Plumbing								
9445	ELEC	FORE	1	9F	Electrical Feeder Rough-In	10	70	3	17OCT07A	17DEC07	105	Electrical Feeder Rough-In								
9450	ELEC	FORE	1	9F	Electrical Branch RI	15	70	5	17OCT07A	19DEC07	120	Electrical Branch RI								
9425	DUCT	FORE	1	9F	Above Ceiling Duct Mains and Branches RI	20	10	18	12NOV07A	09JAN08	-8	Above Ceiling Duct Mains and Branches RI								
<b>Sequence 10H</b>																				
10430	PLUM	FORE	1	10H	Above Ceiling Plumbing	10	80	4	23OCT06A	15JAN08	50	Above Ceiling Plumbing								
10400	MASN	FORE	1	10H	Scaffold for Non Load Bearing Masonry	5	90	1	18OCT07A	11DEC07	11	Scaffold for Non Load Bearing Masonry								
10405	MASN	FORE	1	10H	Non Load Bearing Masonry Walls	15	90	2	18OCT07A	13DEC07	11	Non Load Bearing Masonry Walls								
10200	MASN	FORE	1	10H	Ext Veneer Masonry Walls	15	40	9	22OCT07A	31JAN08	28	Ext Veneer Masonry Walls								
10420	ELEC	FORE	1	10H	In Wall Electrical RI	15	90	2	22OCT07A	13DEC07	87	In Wall Electrical RI								
10440	ELEC	FORE	1	10H	Electrical Feeder Rough-In	10	60	4	22OCT07A	15JAN08	50	Electrical Feeder Rough-In								
10445	ELEC	FORE	1	10H	Electrical Branch RI	15	60	8	22OCT07A	17JAN08	64	Electrical Branch RI								
10425	DUCT	FORE	1	10H	Above Ceiling Duct Mains and Branches RI	20	10	18	12NOV07A	04FEB08	-8	Above Ceiling Duct Mains and Branches RI								
<b>Sequence 12J</b>																				
12200	MASN	FORE	2	12J	Ext Veneer Masonry Walls	15	80	3	19NOV07A	07DEC07	5	Ext Veneer Masonry Walls								
<b>Sequence 13C</b>																				
13405	MASN	CIVI	2	13C	Non Load Bearing Masonry Walls	15	80	6	25OCT07A	10MAR08	38	Non Load Bearing Masonry Walls								
13430	PLUM	CIVI	2	13C	Above Ceiling Plumbing	10	50	5	25OCT07A	02MAY08	1	Above Ceiling Plumbing								
13445	ELEC	CIVI	2	13C	Electrical Branch RI	15	50	8	25OCT07A	14MAY08	18	Electrical Branch RI								
13410	MECH	CIVI	2	13C	In Wall Mechanical	15	60	6	01NOV07A	10MAR08	36	In Wall Mechanical								
13415	DOOR	CIVI	2	13C	Install Door Frames	5	80	1	01NOV07A	03MAR08	41	Install Door Frames								
13420	ELEC	CIVI	2	13C	In Wall Electrical RI	15	80	6	01NOV07A	10MAR08	166	In Wall Electrical RI								
<b>Sequence 14B</b>																				
14410	MECH	CIVI	2	14B	In Wall Mechanical	15	100	0	19NOV07A			In Wall Mechanical								
14415	DOOR	CIVI	2	14B	Install Door Frames	5	100	0	19NOV07A			Install Door Frames								
14420	ELEC	CIVI	2	14B	In Wall Electrical RI	15	100	0	19NOV07A			In Wall Electrical RI								

# Schedule (activities scheduled for the month of December 2007 cont'd)



Activity ID	RESP	WING	LEVE	SEQ PODS	Activity Description	Orig Dur	% Comp	Rem Dur	Early Start	Early Finish	Total Float	2007																
												Q4	Q1	Q2	2008			Q1	Q2	Q3								
14430	PLUM	CIVI	2	14B	Above Ceiling Plumbing	10	30	7	19NOV07A	28MAY08	45																	
14440	MECH	CIVI	2	14B	Above Ceiling Mechanical Pipe	10	20	8	19NOV07A	29MAY08	45																	
14445	ELEC	CIVI	2	14B	Electrical Feeder Rough-In	10	20	8	19NOV07A	29MAY08	45																	
14455	ELEC	CIVI	2	14B	Electrical Branch RI	15	20	12	19NOV07A	04JUN08	53																	
14425	DUCT	CIVI	2	14B	Above Ceiling Duct Mains and Branches RI	20	25	15	26NOV07A	09JUN08	9																	
14435	DRYW	CIVI	2	14B	Metal Stud Partitions	10	10	9	26NOV07A	21MAR08	61																	
<b>Structure 10F</b>																												
15400	MASN	FORE	1	15F	Scaffold for Non Load Bearing Masonry	5	80	1	22OCT07A	14DEC07	26																	
15405	MASN	FORE	1	15F	Non Load Bearing Masonry Walls	15	80	3	22OCT07A	19DEC07	26																	
15410	MECH	FORE	1	15F	In Wall Mechanical	15	80	3	22OCT07A	19DEC07	28																	
15115	DOOR	FORE	1	15F	Install Door Frames	5	80	1	22OCT07A	17DEC07	28																	
15420	ELEC	FORE	1	15F	In Wall Electrical RI	15	80	3	22OCT07A	19DEC07	206																	
15430	PLUM	FORE	1	15F	Above Ceiling Plumbing	10	80	2	22OCT07A	13FEB08	84																	
15445	ELEC	FORE	1	15F	Electrical Feeder Rough-In	10	50	5	22OCT07A	18FEB08	84																	
15455	ELEC	FORE	1	15F	Electrical Branch RI	15	50	8	22OCT07A	21FEB08	96																	
15440	MECH	FORE	1	15F	Above Ceiling Mechanical Pipe	10	0	10	19NOV07A	25FEB08	84																	
<b>Structure 11F</b>																												
16400	MASN	CIVI	2	16B	Scaffold for Non Load Bearing Masonry	5	75	1	26NOV07A	11MAR08	58																	
16405	MASN	CIVI	2	16B	Non Load Bearing Masonry Walls	15	75	4	26NOV07A	17MAR08	56																	
16410	MECH	CIVI	2	16B	In Wall Mechanical	15	75	4	26NOV07A	17MAR08	58																	
16415	DOOR	CIVI	2	16B	Install Door Frames	5	75	1	26NOV07A	12MAR08	59																	
16420	ELEC	CIVI	2	16B	In Wall Electrical RI	15	75	4	26NOV07A	17MAR08	169																	
16425	DUCT	CIVI	2	16B	Above Ceiling Duct Mains and Branches RI	20	25	15	26NOV07A	30JUN08	9																	
16430	PLUM	CIVI	2	16B	Above Ceiling Plumbing	10	25	8	26NOV07A	19JUN08	34																	
16440	MECH	CIVI	2	16B	Above Ceiling Mechanical Pipe	10	25	8	26NOV07A	19JUN08	34																	
16445	ELEC	CIVI	2	16B	Electrical Feeder Rough-In	10	25	8	26NOV07A	19JUN08	34																	
16455	ELEC	CIVI	2	16B	Electrical Branch RI	15	25	11	26NOV07A	24JUN08	43																	
<b>Structure A</b>																												
17120	STL	CIVI	2	17A	Structural Steel	5	50	3	08OCT07A	07DEC07	4																	
<b>Structure B</b>																												
18110	MASN	FORE	2	18F	2nd Floor Masonry Walls	20	90	2	18OCT07A	04DEC07	2																	
18120	STL	FORE	2	18F	Structural Steel	5	75	1	01NOV07A	12DEC07	2																	
<b>Structure C</b>																												
20400	MASN	FORE	1	20H	Scaffold for Non Load Bearing Masonry	5	50	3	12NOV07A	17DEC07	65																	
20405	MASN	FORE	1	20H	Non Load Bearing Masonry Walls	15	50	8	12NOV07A	09JAN08	58																	
20410	MECH	FORE	1	20H	In Wall Mechanical	15	50	8	12NOV07A	28DEC07	65																	
20415	DOOR	FORE	1	20H	Install Door Frames	5	50	3	12NOV07A	20DEC07	70																	

# Schedule (activities scheduled for the month of December 2007 cont'd)



Activity ID	RESP	WING	LEVE	SEQ PODS	Activity Description	Orig Dur	% Comp	Rem Dur	Early Start	Early Finish	Total Float	2007									
												Q4	Q1	Q2	Q3	Q4	Q1	Q2	Q3		
20420	ELEC	FORE	1	20H	In Wall Electrical RI	15	50	8	12NOV07A	09JAN08	193										
20440	ELEC	FORE	1	20H	Electrical Feeder Rough-In	10	30	7	12NOV07A	30APR08	17										
20445	ELEC	FORE	1	20H	Electrical Branch RI	15	30	11	12NOV07A	08MAY08	26										
Sequence 24H																					
24140	STL	FORE	2	24H	Structural Steel	5	30	4	30OCT07A	18DEC07	27										
Sequence 26E																					
26120	MASN	CIVI	2	26D	2nd Floor Masonry Walls	20	40	12	27NOV07A	07JAN08	29										
Sequence 27E																					
27130	STL	CIVI	2	27D	Structural Steel	5	40	3	29NOV07A	23JAN08	25										
Sequence 29G																					
29110	MASN	FORE	2	29G	2nd Floor Masonry Walls	20	75	5	08NOV07A	18JAN08	33										
Sequence 32C																					
32210	MASN	CIVI	3	32C	Ext Veneer Masonry Walls	15	90	2	15NOV07A	25MAR08	21										
32140	STL	CIVI	3	32C	Structural Steel	5	40	3	19NOV07A	21MAR08	13										
Sequence 33C																					
33210	MASN	CIVI	3	33C	Ext Veneer Masonry Walls	15	90	2	15NOV07A	28MAR08	208										
33140	STL	CIVI	3	33C	Structural Steel	5	40	3	21NOV07A	28MAR08	20										
Sequence 35G																					
35120	CONC	FORE	1	35G	Concrete Slab on Grade	10	90	1	14SEP07A	27FEB08	195										
Sequence 25E1																					
41150	MASN	CIVI	1	P1	Masonry Load Bearing Walls	20	40	12	08OCT07A	18DEC07	28										
Sequence 22																					
42100	STL	CIVI	1	P2	Structural Steel	5	40	3	12NOV07A	08JAN08	28										
Total																					

# **EXHIBIT H**

## **SAINT ELIZABETHS HOSPITAL CONSTRUCTION STATUS REPORT – JANUARY 2008**

# St. Elizabeth's Hospital Project Monthly Summary Report



Month/Year: January 2008 Date: 31 January 2007

## Construction Manager Summary

- Interior/Exterior brick and masonry continues. Preparing for roof system and fencing installation.

## Work Summary

### SEH

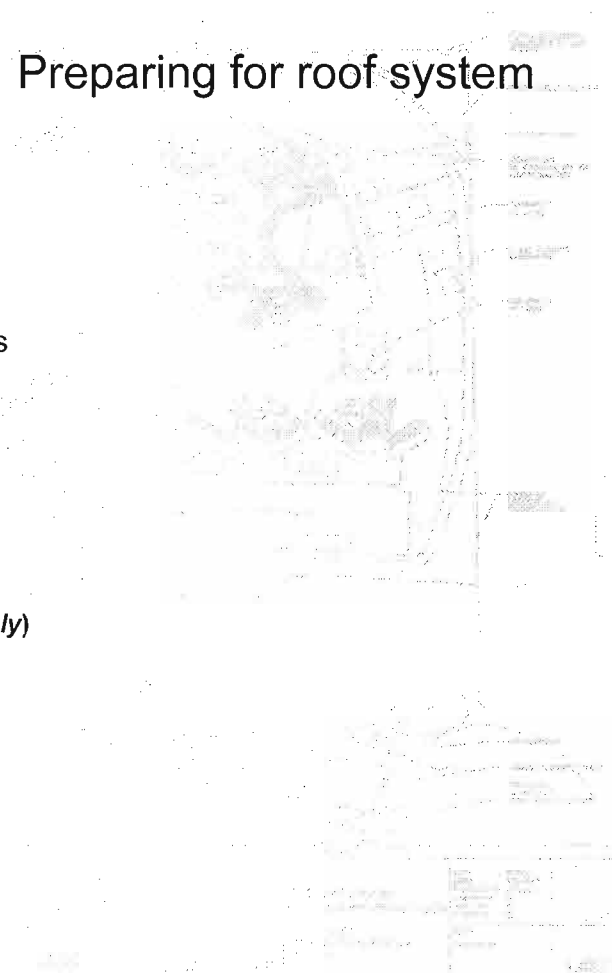
- Steel installation continues, 90% complete
- Steel and concrete deck installation on-going, nearing completion
- Brick veneer installation continues at both wings, including interior walls
- Temporary power connection for site established
- Overall completion, 42%

### RMB (*infrastructure and utilities only*)

- Demo and abatement, 60%
- Work Plans being developed for follow-on work
- Schedule revision near completion

### Project Challenges SEH & RMB (*infrastructure and utilities only*)

- Complete/accurate design information
- Telecom Service
- Wireless system/pathway/technical requirements for systems
- WASA
- PEPCO

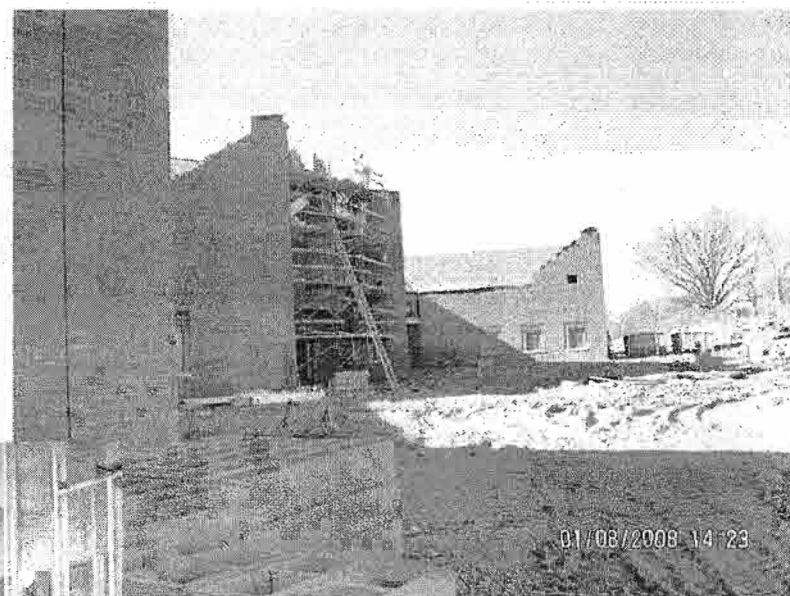




# Project Progress Photos



**Gilbane**



**Top Left: View from JHP  
Above: Backside of  
Forensic Wing  
Bottom: Interior studwalls  
at 2<sup>nd</sup> floor Civil Wing**

# Project Controls and Budget Summary



## St. Elizabeth's New Hospital

- Original Contract Value: \$139,915,510
- Approved Changes: 44
- Current Contract Amount: \$145,626,013
- Pending Changes (OME): \$ 11,164,494
- Pending contract Value: \$156,790,507

## RMB, CT-7, CT-8

- Original Contract Value: \$13,247,000
- Approved Changes: 0
- Current Contract Value: \$13,247,000
- Pending Changes (OME): \$
- Pending Contract Value: \$

## Submittal Update (TBI Submittals)

- Submittals Issued to Date: 538
- Submittals in Review: 15

## RFI Update (TBI RFI's)

- RFI's Issued to Date: 765
- RFI's In Review: 12

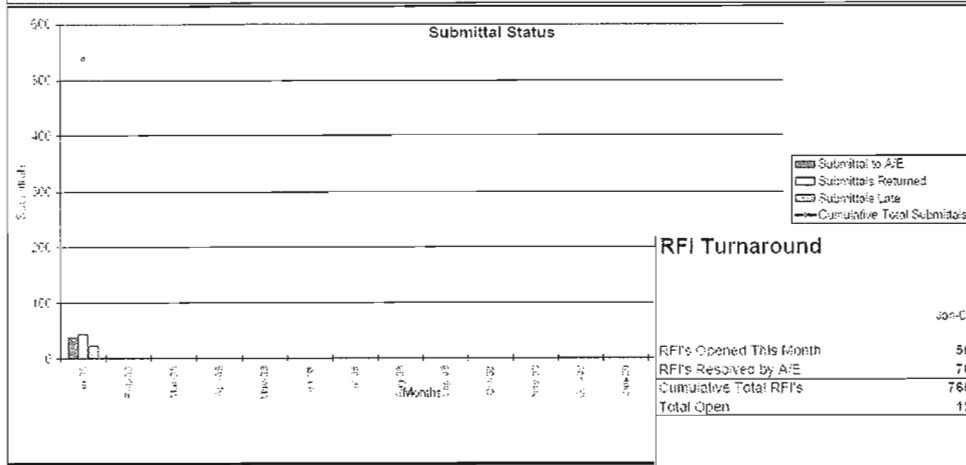
## Schedule Summary

- Critical path remains at -9. TBI exercising weather protection to maintain work flow. Additional time extensions not yet required for added work. 3-6 month impact for larger design/program revisions.

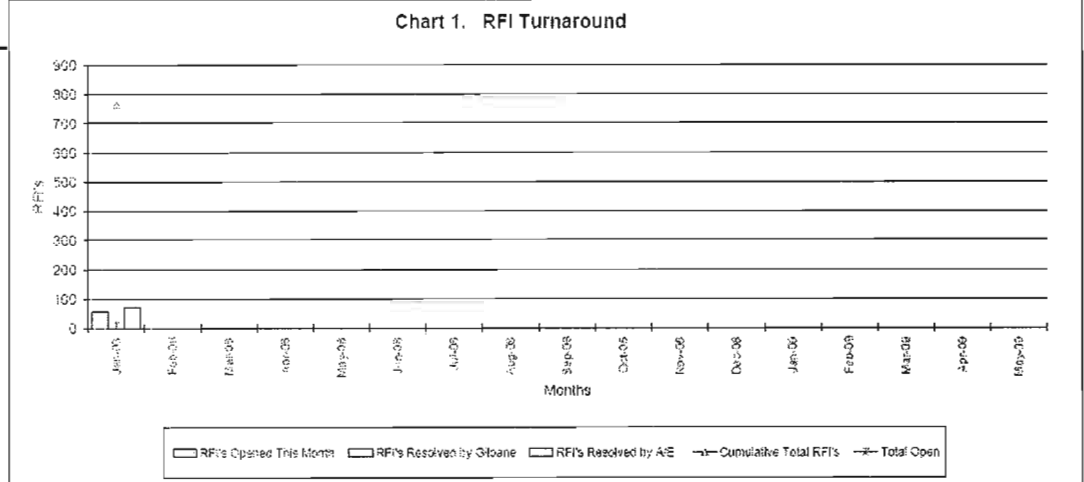
# Project Controls Review



Submittals Status	ST. ELIZABETH'S NEW HOSPITAL		Project 3207													
Submittal Turnaround	Jan-08	Feb-08	Mar-08	Apr-08	May-08	Jun-08	Jul-08	Aug-08	Sep-08	Oct-08	Nov-08	Dec-08	Jan-09	Feb-09	Mar-09	Apr-09
Submittals to A/E	39															
Submittals Returned	43															
Submittals Late	22															
Cumulative Total Submittals	558															



RFI Turnaround	ST. ELIZABETH'S HOSPITAL		Project 3207														
RFIs Opened This Month	Jan-08	Feb-08	Mar-08	Apr-08	May-08	Jun-08	Jul-08	Aug-08	Sep-08	Oct-08	Nov-08	Dec-08	Jan-09	Feb-09	Mar-09	Apr-09	May-09
RFIs Resolved by A/E	70																
Cumulative Total RFIs	766																
Total Open	12																



# Schedule (activities scheduled for the month of January 2008)



Activity ID	Activity Description	Orig Dur	% Comp	Rem Dur	Early Start	Early Finish	Late Start	Late Finish	Total Float	2008																															
										J	F	M	A	M	J	J	A	S	O	N	D	J	F	M	A	M	J	J													
<b>SITWORK</b>																																									
360	FRP Figs Guard House	10	0	10	27DEC07	10JAN08	08SEP08	19SEP08	178	FRP Figs Guard House																															
380	Masonry Load Bearing Walls Guard House	5	0	5	11JAN08	17JAN08	10NOV08	14NOV08	213	Masonry Load Bearing Walls Guard House																															
2651	FRP Figs/SOG Grnhouse 1	10	0	10	11JAN08	24JAN08	22SEP08	03OCT08	178	FRP Figs/SOG Grnhouse 1																															
400	In Wall Electrical Rough In	3	0	3	15JAN08	17JAN08	12NOV08	14NOV08	213	In Wall Electrical Rough In																															
420	In Wall Mechanical Rough In	3	0	3	15JAN08	17JAN08	12NOV08	14NOV08	213	In Wall Mechanical Rough In																															
430	In Wall Plumbing Rough In	3	0	3	15JAN08	17JAN08	03DEC08	05DEC08	227	In Wall Plumbing Rough In																															
390	Install Structural Steel	3	0	3	18JAN08	22JAN08	17NOV08	19NOV08	213	Install Structural Steel																															
1990	Install Roofing	3	0	3	23JAN08	25JAN08	20NOV08	24NOV08	213	Install Roofing																															
2661	Masonry Load Bearing Walls Grn house	5	0	5	25JAN08	31JAN08	15OCT08	21OCT08	185	Masonry Load Bearing Walls Grn house																															
2791	FRP Figs/SOG GRN HSE 2	10	0	10	25JAN08	07FEB08	08OCT08	17OCT08	178	FRP Figs/SOG GRN HSE 2																															
2060	Install Curtain Wall Framing	3	0	3	28JAN08	30JAN08	25NOV08	28NOV08	213	Install Curtain Wall Framing																															
2671	Electrical In Wall Rough In	3	0	3	29JAN08	31JAN08	12DEC08	16DEC08	224	Electrical In Wall Rough In																															
2681	Mechanical In Wall Rough In	3	0	3	29JAN08	31JAN08	12DEC08	16DEC08	224	Mechanical In Wall Rough In																															
2691	Plumbing In Wall Rough In	3	0	3	29JAN08	31JAN08	16DEC08	18DEC08	228	Plumbing In Wall Rough In																															
2070	Install Glass	2	0	2	31JAN08	01FEB08	01DEC08	02DEC08	213	Install Glass																															
<b>BUILDING STRUCTURE</b>																																									
<b>CIVIL WING</b>																																									
12100	Structural Steel	5	70	2	12NOV07A	24JAN08	12NOV07A	19FEB08	18	Structural Steel																															
26130	Structural Steel	5	50	3	12DEC07A	30JAN08	12DEC07A	05MAR08	25	Structural Steel																															
41100	Structural Steel	5	20	4	19DEC07A	15JAN08	19DEC07A	08FEB08	18	Structural Steel																															
27140	Roof Slab	3	67	1	26DEC07A	31JAN08	26DEC07A	01APR08	43	Roof Slab																															
27150	Conduit Rough-In, Roof Slab	3	67	1	26DEC07A	31JAN08	26DEC07A	01APR08	43	Conduit Rough-In, Roof Slab																															
32130	Set Mechanical Equipment	5	0	5	31DEC07	07JAN08	03APR08	09APR08	67	Set Mechanical Equipment																															
33130	Set Mechanical Equipment	5	0	5	31DEC07	07JAN08	15APR08	21APR08	75	Set Mechanical Equipment																															
43100	Structural Steel	5	0	5	16JAN08	22JAN08	11FEB08	15FEB08	18	Structural Steel																															
44105	Roof Slab	5	0	5	16JAN08	22JAN08	23SEP08	29SEP08	176	Roof Slab																															
44110	Conduit Rough-In, In-Slab	1	0	1	22JAN08	22JAN08	29SEP08	29SEP08	176	Conduit Rough-In, In-Slab																															
43105	Roof Slab	5	0	5	23JAN08	29JAN08	31JUL08	08AUG08	134	Roof Slab																															
Start Date: 01SEP00 Finish Date: 09OCT06 Data Date: 27DEC07 Rev. Date: 28JAN08 07:52											Sheet 1 of 13 Tompkins Builders Inc. St. Elizabeth - Update 12/31/07																														
Legend: <input type="checkbox"/> Early Bar <input type="checkbox"/> Progress Bar <input type="checkbox"/> Critical Activity											Revision Table: <table border="1"> <thead> <tr> <th>Date</th> <th>Revision</th> <th>Checked</th> <th>Approved</th> </tr> </thead> <tbody> <tr><td> </td><td> </td><td> </td><td> </td></tr> <tr><td> </td><td> </td><td> </td><td> </td></tr> <tr><td> </td><td> </td><td> </td><td> </td></tr> <tr><td> </td><td> </td><td> </td><td> </td></tr> </tbody> </table>											Date	Revision	Checked	Approved																
Date	Revision	Checked	Approved																																						
© Primavera Systems, Inc.																																									

# Schedule (activities scheduled for the month of January 2008)



Gilbane

Activity ID	Activity Description	Orig Dur	% Comp	Rem Dur	Early Start	Early Finish	Late Start	Late Finish	Total Float	2008												2009											
										J	F	M	A	M	J	J	A	S	O	N	D	J	F	M	A	M	J	J					
44115	Bituminous Roof	5	0	5	23JAN08	29JAN08	30SEP08	06OCT08	176	[ ] Bituminous Roof																							
42105	Pour Roof Slab	3	0	3	25JAN08	29JAN08	28MAR08	01APR08	45	[ ] Pour Roof Slab																							
43110	Conduit Rough-In, In-Slab	1	0	1	29JAN08	29JAN08	06AUG08	06AUG08	134	[ ] Conduit Rough-In, In-Slab																							
43115	Bituminous Roof	5	0	5	30JAN08	05FEB08	07AUG08	13AUG08	134	[ ] Bituminous Roof																							
34100	Concrete 3rd Floor Slab	5	0	5	31JAN08	08FEB08	16JUN08	20JUN08	96	[ ] Concrete 3rd Floor Slab																							
<b>FORENSIC</b>																																	
24140	Structural Steel	5	30	4	30OCT07A	09JAN08	30OCT07A	28JAN08	13	[ ] Structural Steel																							
25130	Structural Steel	5	75	1	17NOV07A	25JAN08	17NOV07A	20FEB08	18	[ ] Structural Steel																							
26120	2nd Floor Masonry Walls	20	90	2	03DEC07A	02JAN08	03DEC07A	05MAR08	45	[ ] 2nd Floor Masonry Walls																							
18140	Set Mechanical Equipment	5	0	5	27DEC07	03JAN08	31JAN08	06FEB08	24	[ ] Set Mechanical Equipment																							
24130	Set Mechanical Equipment	5	0	5	27DEC07	03JAN08	16JAN08	22JAN08	13	[ ] Set Mechanical Equipment																							
18130	Roof Slab	5	0	5	31DEC07	07JAN08	22JAN08	28JAN08	15	[ ] Roof Slab																							
24150	Roof Slab	5	0	5	10JAN08	16JAN08	29JAN08	04FEB08	13	[ ] Roof Slab																							
25140	Roof Slab	5	0	5	28JAN08	01FEB08	21FEB08	27FEB08	18	[ ] Roof Slab																							
26130	Structural Steel	5	0	5	31JAN08	06FEB08	06MAR08	12MAR08	25	[ ] Structural Steel																							
<b>SKIN</b>																																	
<b>EXT. WING</b>																																	
3200	Ext Veneer Masonry Walls	15	10	14	17OCT07A	17JAN08	17OCT07A	21FEB08	25	[ ] Ext Veneer Masonry Walls																							
13200	Install Bituminous Roofing	10	0	10	28DEC07	11JAN08	06FEB08	19FEB08	27	[ ] Install Bituminous Roofing																							
14200	Install Bituminous Roofing	10	0	10	14JAN08	25JAN08	20FEB08	04MAR08	27	[ ] Install Bituminous Roofing																							
14210	Ext Veneer Masonry Walls	15	0	15	18JAN08	07FEB08	22FEB08	13MAR08	26	[ ] Ext Veneer Masonry Walls																							
14220	Install Windows	10	0	10	18JAN08	31JAN08	23MAY08	06JUN08	90	[ ] Install Windows																							
16200	Install Bituminous Roofing	10	0	10	28JAN08	08FEB08	05MAR08	18MAR08	27	[ ] Install Bituminous Roofing																							
<b>FORENSIC</b>																																	
9200	Ext Veneer Masonry Walls	15	20	12	12NOV07A	16JAN08	12NOV07A	11JAN08	-3	[ ] Ext Veneer Masonry Walls																							
15200	Ext Veneer Masonry Walls	15	20	12	12NOV07A	01FEB08	12NOV07A	29JAN08	-3	[ ] Ext Veneer Masonry Walls																							
11210	Install Bituminous Roofing	10	0	10	28DEC07	11JAN08	10JAN08	23JAN08	8	[ ] Install Bituminous Roofing																							
11215	Standing Seam Roof	12	0	12	28DEC07	15JAN08	14DEC07	02JAN08	-8	[ ] Standing Seam Roof																							
13210	Install Bituminous Roofing	10	0	10	08JAN08	21JAN08	07FEB08	20FEB08	22	[ ] Install Bituminous Roofing																							
4210	Install Bituminous Roofing	10	0	10	11JAN08	24JAN08	03MAR08	14MAR08	36	[ ] Install Bituminous Roofing																							
12215	Standing Seam Roof	12	0	12	16JAN08	31JAN08	22JAN08	08FEB08	4	[ ] Standing Seam Roof																							
24205	Standing Seam Metal Roof	12	0	12	17JAN08	01FEB08	05FEB08	20FEB08	13	[ ] Standing Seam Metal Roof																							
<b>INTERIOR</b>																																	
<b>EXT. WING</b>																																	
3405	Non Load Bearing Masonry Walls	15	90	2	05SEP07A	03JAN08	06SEP07A	17JAN08	10	[ ] Non Load Bearing Masonry Walls																							
3410	In Wall Mechanical	15	90	2	05SEP07A	03JAN08	06SEP07A	17JAN08	10	[ ] In Wall Mechanical																							









# Schedule (activities scheduled for the month of January 2008 cont'd)



Activity ID	Activity Description	Orig Dur	% Comp	Rem Dur	Early Start	Early Finish	Late Start	Late Finish	Total Float	2008												
										J	F	M	A	M	J	J	A	S	O	N	D	J
19420	In Wall Electrical RI	15	20	12	17DEC07A	31JAN08	17DEC07A	09OCT08	177													
22685	Spray Fireproof	5	80	1	19DEC07A	21JAN08	19DEC07A	16APR08	62													
11400	FRP - Equipment Pads	10	0	10	28DEC07	11JAN08	18DEC07	02JAN08	-7													
5450	Above Ceiling Fire Sprinkler Mains and Branch RI	20	0	20	03JAN08	30JAN08	21FEB08	19MAR08	35													
9435	Metal Stud Partitions	10	0	10	07JAN08	18JAN08	20MAY08	03JUN08	96													
5460	Install Security RI / Mounting Devices	5	0	5	08JAN08	14JAN08	05MAY08	09MAY08	84													
10410	In Wall Mechanical	15	90	2	08JAN08	09JAN08	24JAN08	25JAN08	12													
10415	Install Door Frames	5	90	1	08JAN08	08JAN08	25JAN08	25JAN08	13													
9465	Above Ceiling Fire Sprinkler Mains and Branch RI	20	0	20	09JAN08	05FEB08	12MAY08	09JUN08	88													
9485	Pull Feeder Wire	7	0	7	14JAN08	22JAN08	18SEP08	28SEP08	175													
11405	Cure Equipment Pad	5	0	5	14JAN08	18JAN08	03JAN08	09JAN08	-7													
12400	FRP - Equipment Pads	10	0	10	14JAN08	25JAN08	10JAN08	23JAN08	-2													
15435	Metal Stud Partitions	10	0	10	15JAN08	28JAN08	12JUN08	25JUN08	106													
5480	Pull Fire Alarm Wire	7	0	7	16JAN08	24JAN08	11MAR08	19MAR08	39													
9480	Install Security RI / Mounting Devices	5	0	5	16JAN08	22JAN08	22JUL08	28JUL08	132													
11565	Spray Fireproof	5	0	5	16JAN08	22JAN08	03JAN08	09JAN08	-9													
9455	In Wall Mechanical Rough In - GYB Wall	5	0	5	21JAN08	25JAN08	04JUN08	10JUN08	96													
9460	In Wall Electrical RI - GYB Wall	5	0	5	21JAN08	25JAN08	04JUN08	10JUN08	96													
9490	Pull Branch Wire	5	0	5	23JAN08	29JAN08	29SEP08	03OCT08	175													
11410	Set Penthouse Mechanical Equipment	10	0	10	23JAN08	05FEB08	10JAN08	23JAN08	-9													
12570	Spray Fireproof	5	0	5	23JAN08	29JAN08	31JAN08	06FEB08	6													
12405	Cure Equipment Pad	10	0	10	28JAN08	08FEB08	24JAN08	06FEB08	-2													
18400	FRP - Equipment Pads	10	0	10	28JAN08	08FEB08	07FEB08	20FEB08	8													
18570	Spray Fireproof	5	0	5	28JAN08	01FEB08	28FEB08	05MAR08	23													
15450	In Wall Mechanical Rough In - GYB Wall	5	0	5	29JAN08	04FEB08	26JUN08	02JUL08	106													
15460	In Wall Electrical RI - GYB Wall	5	0	5	29JAN08	04FEB08	26JUN08	02JUL08	106													
9500	Pull Fire Alarm Wire	7	0	7	30JAN08	07FEB08	22OCT08	30OCT08	187													
5490	Install Ceiling Grid	10	0	10	31JAN08	13FEB08	28APR08	09MAY08	82													
10450	Above Ceiling Fire Sprinkler Mains and Branch RI	20	0	20	31JAN08	27FEB08	20MAR08	16APR08	35													