



Government of the District of Columbia
Department of Behavioral Health (DBH)



Dec-19

Table of Contents

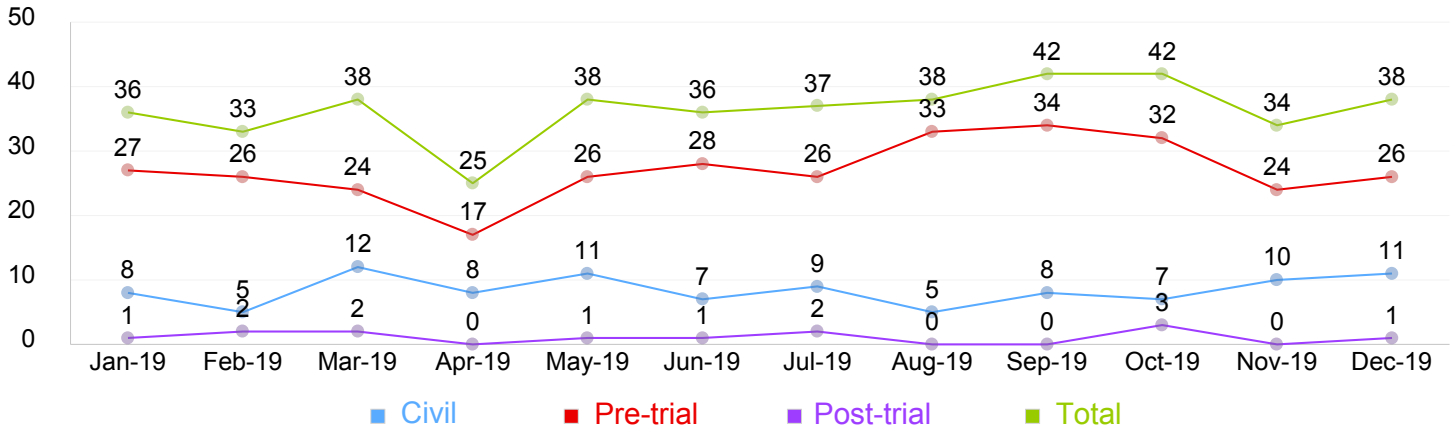
1. Admissions to SEH	-----	2
2. Discharges to SEH	-----	2
3. Average Daily Census	-----	3
4. Transfers	-----	3
5. 30-Day Readmission Rate	-----	4
6. Unusual Incidents	-----	5
7. Patient-Involved Unusual Incidents	-----	5
8. Selected Types of Incidents	-----	7
9. Physical Assaults	-----	8
10. Patient Injuries	-----	9
11. Staff Injuries	-----	10
12. Patient and Staff Falls	-----	10
13. Percent of Patients Restrained or Secluded	-----	11
14. Restraint Hours Rate & Seclusion Hours Rate	-----	11
15. Reported Medication Variance Events	-----	12
16. Reported Adverse Drug Reactions	-----	12
17. Percent of Missing Documentation on Med-Administration	-----	13
18. Medication Refusal Rate	-----	13
19. Number of STAT Events and Individuals Involved	-----	14
20. Demographics - Trend of Gender Distribution	-----	14
21. Demographics - Trend of Age Distribution	-----	15
22. Length of Stay - LOS for Individuals in Care	-----	15
23. Length of Stay - LOS for Individuals in Care with Civil	-----	16

Data Disclaimer

The primary source of data extracted and analyzed herein is Avatar, the Saint Elizabeths Hospital's electronic medical record system. Additional data sources include, but are not limited to, the Hospital's Unusual Incident Database and SiteFM. Data reflect information as entered in each system by users. Data and Performance Management (DPM) has made reasonable efforts to ensure that data and its accompanying information are as accurate and up-to-date as possible at the time of analysis and publication, but does not guarantee the accuracy, reliability, or completeness of data. DPM is not liable for any misinterpretation or misuse of the data. Use of any information from PRISM must be fully acknowledged and/or cited. Use of PRISM data for anything other than patient care determinations or management of the services provided within the hospital (including external publications, research papers, presentations, etc.) is prohibited without written permission from the Chief Quality and Data Manager Officer at the Saint Elizabeths Hospital.

As of May, 2019 a new platform, Microstrategy, was implemented for producing PRISM. At that time, two charts were removed from the report. Admissions vs Patient UI rate was removed because it showed two data points that already existed in other charts and put them together. Percentage of SiteFM Work Orders Completed within 3 Days was removed because it related to internal operations. Data from the appendix tables were integrated into the relevant charts. Microstrategy is a visualization tool that is linked to the data sources for each chart, so the information is not static. If new information is added for a month that has already been reported on, that update will be reflected in the next month's report.

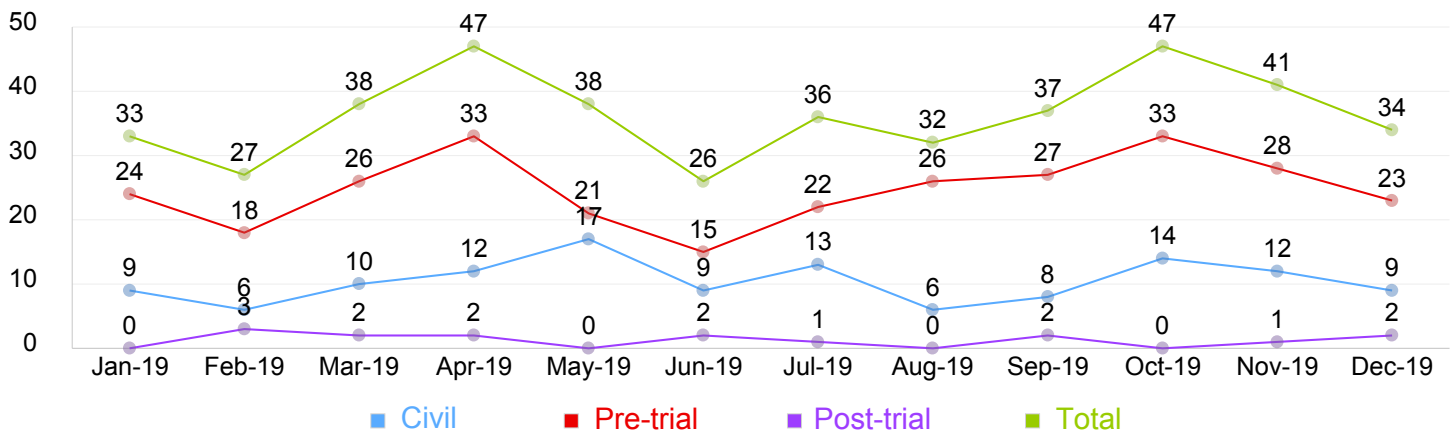
1. Admissions



Metrics	Admission Count												Avg	Total
Legal Status Group	Jan-19	Feb-19	Mar-19	Apr-19	May-19	Jun-19	Jul-19	Aug-19	Sep-19	Oct-19	Nov-19	Dec-19		
Civil	8	5	12	8	11	7	9	5	8	7	10	11	8	101
Pre-trial	27	26	24	17	26	28	26	33	34	32	24	26	27	323
Post-trial	1	2	2	0	1	1	2	0	0	3	0	1	1	13
Total	36	33	38	25	38	36	37	38	42	42	34	38	36	437

* Number of admissions to SEH inpatient program, including transfers from forensic outpatient to inpatient program.

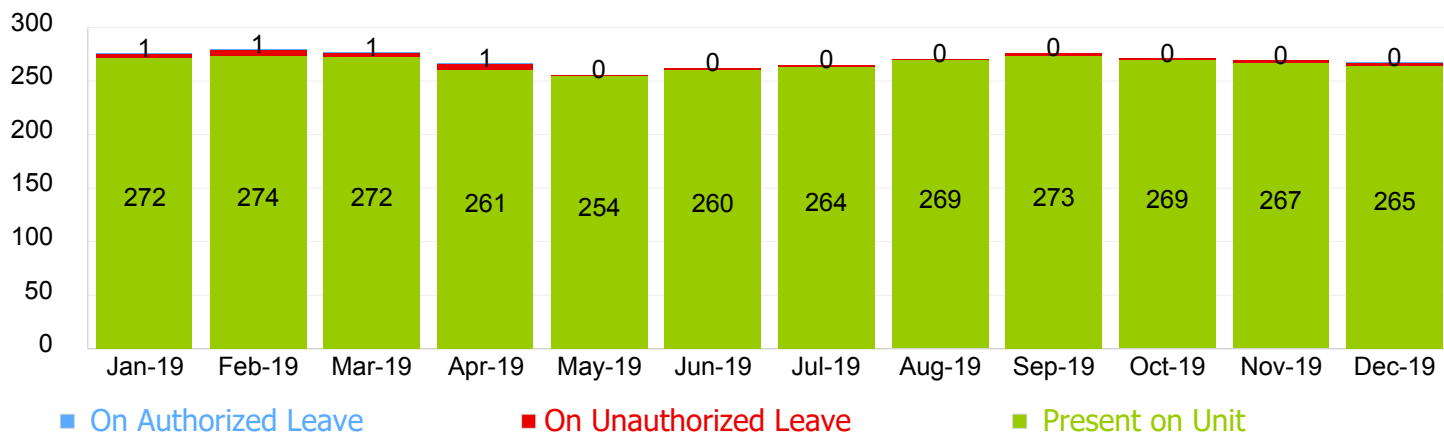
2. Discharges



Legal Status Group	Discharge Count												Avg	Total
Legal Status Group	Jan-19	Feb-19	Mar-19	Apr-19	May-19	Jun-19	Jul-19	Aug-19	Sep-19	Oct-19	Nov-19	Dec-19		
Civil	9	6	10	12	17	9	13	6	8	14	12	9	10	125
Pre-trial	24	18	26	33	21	15	22	26	27	33	28	23	25	296
Post-trial	0	3	2	2	0	2	1	0	2	0	1	2	2	15
Total	33	27	38	47	38	26	36	32	37	47	41	34	36	436

* Number of discharges from SEH inpatient program, including transfers from inpatient to forensic outpatient program.

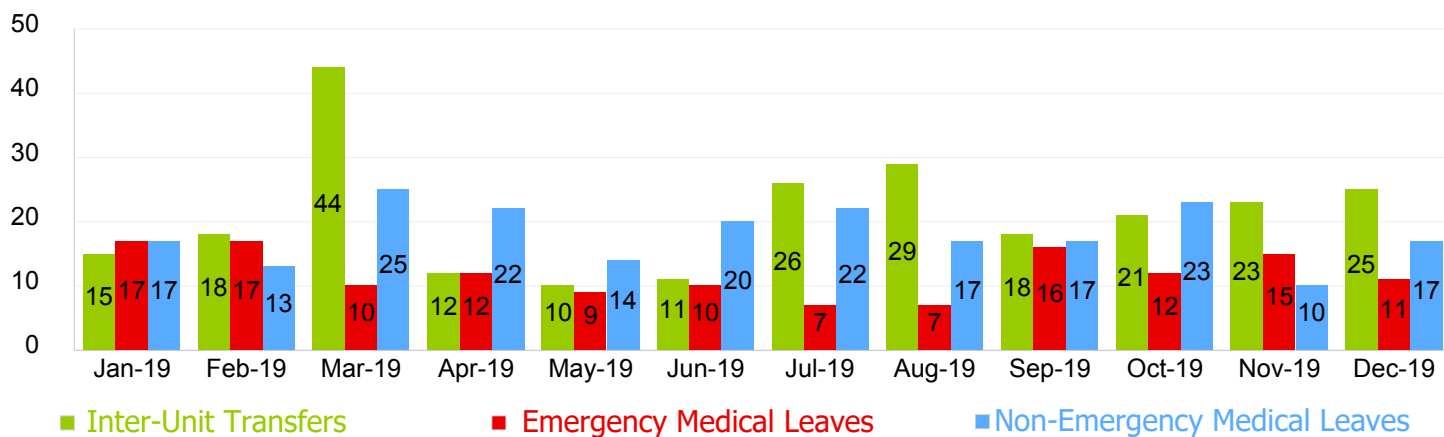
3. Average Daily Census



Census_Status	Metrics	Patient Count												Average
	YearMonth	Jan-19	Feb-19	Mar-19	Apr-19	May-19	Jun-19	Jul-19	Aug-19	Sep-19	Oct-19	Nov-19	Dec-19	
a. Present on Unit		272	274	272	261	254	260	264	269	273	269	267	265	267
b. On AL		4	5	3	5	1	2	2	1	3	2	3	2	3
c. On UL		1	1	1	1	0	0	0	0	0	0	0	0	0
Total		276	279	277	267	256	262	265	271	276	271	269	267	

* Data above is the daily average number of individuals counted at 11:59 PM every day during each month. Census data is tracked via the AVATAR database.

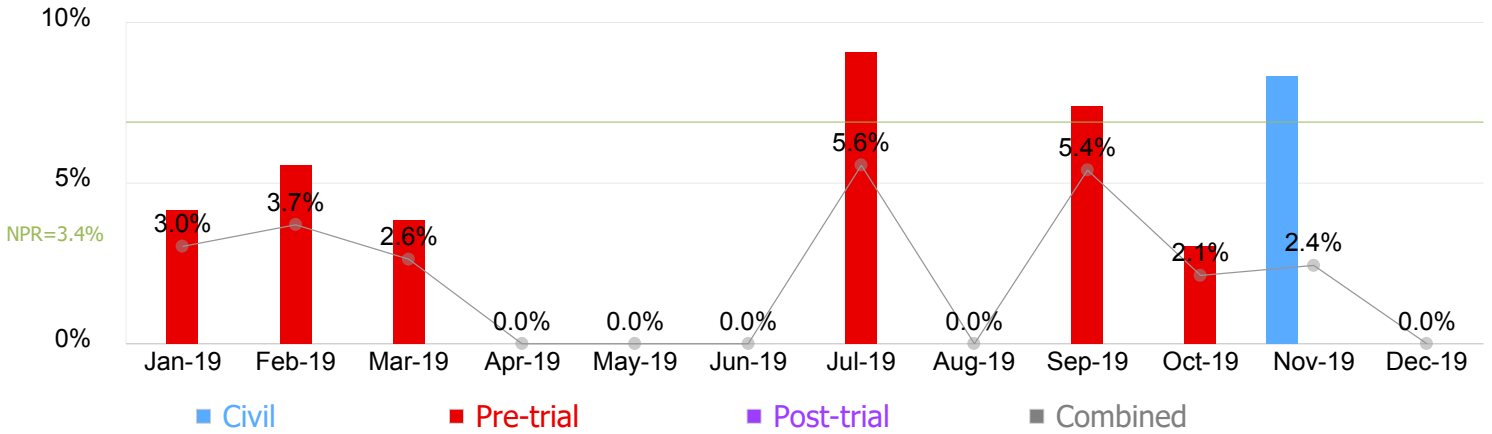
4. Transfers



Metrics	YearMonth	Jan-19	Feb-19	Mar-19	Apr-19	May-19	Jun-19	Jul-19	Aug-19	Sep-19	Oct-19	Nov-19	Dec-19	Avg	Total
Inter-Unit Transfers		15	18	44	12	10	11	26	29	18	21	23	25	21	252
Emergency Medical Leaves		17	17	10	12	9	10	7	7	16	12	15	11	12	143
Non-Emergency Medical Leaves		17	13	25	22	14	20	22	17	17	23	10	17	18	217
Total		49	48	79	46	33	41	55	53	51	56	48	53	--	612

* Number of inter-unit transfers that occurred during month and number of emergency medical leaves that were initiated during month.

5. 30-Day Readmission Rate

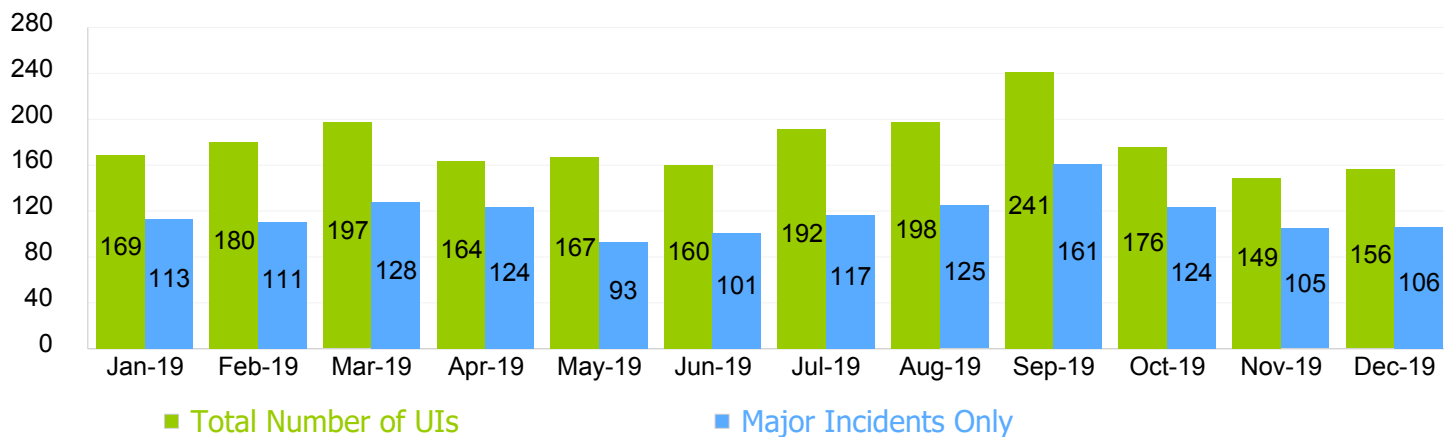


Legal Status Group	Readmission Rate												Avg
	Jan-19	Feb-19	Mar-19	Apr-19	May-19	Jun-19	Jul-19	Aug-19	Sep-19	Oct-19	Nov-19	Dec-19	
Civil	0.0%	0.0%	0.0%	0.0%	0.0%	0.0%	0.0%	0.0%	0.0%	0.0%	8.3%	0.0%	0.7%
Pre-trial	4.2%	5.6%	3.8%	0.0%	0.0%	0.0%	9.1%	0.0%	7.4%	3.0%	0.0%	0.0%	2.8%
Post-trial	0.0%	0.0%	0.0%	0.0%	0.0%	0.0%	0.0%	0.0%	0.0%	0.0%	0.0%	0.0%	0.0%
Combined	3.0%	3.7%	2.6%	0.0%	0.0%	0.0%	5.6%	0.0%	5.4%	2.1%	2.4%	0.0%	2.1%

* Percent of discharges that returned to SEH within 30 days of discharges. It does not include those who may have been re-hospitalized at another psychiatric facility. This measure requires 30-day observation following discharge.

** The post-trial denominators (discharges) per month range only between one and six, making the monthly re-admission rate high when there is any. For example, in December 2014, there was only one post-trial discharge, which was readmitted within 30 days. Thus, the 30-day readmission rate for post-trial discharge at that time was 100%.

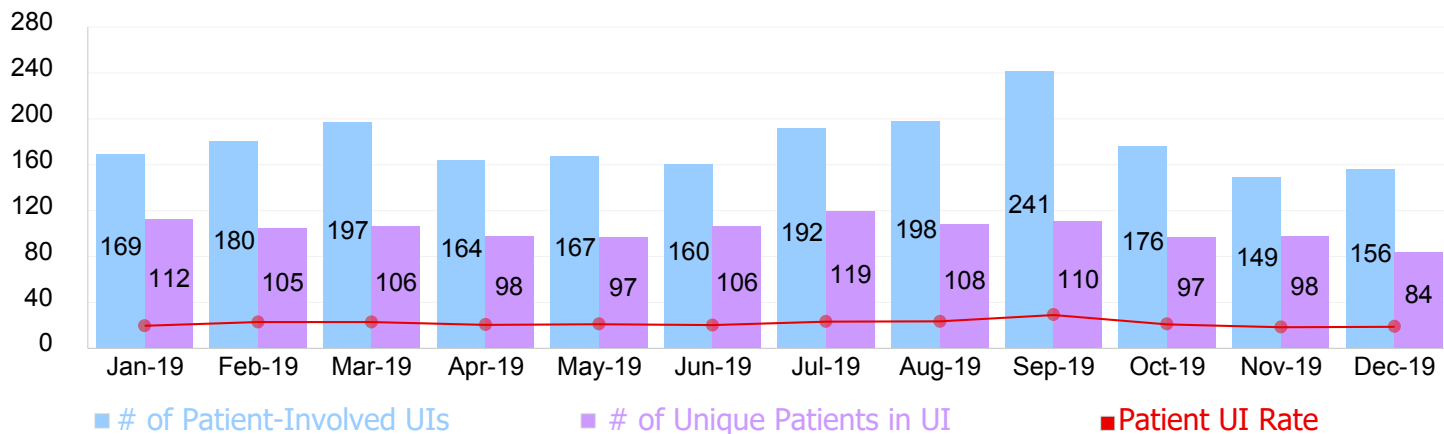
6. Unusual Incidents



	Jan-19	Feb-19	Mar-19	Apr-19	May-19	Jun-19	Jul-19	Aug-19	Sep-19	Oct-19	Nov-19	Dec-19	Avg	Total
Major Incidents Only	113	111	128	124	93	101	117	125	161	124	105	106	117	1,408
Total Number of UIs	169	180	197	164	167	160	192	198	241	176	149	156	179	2,149

* A Major Unusual Incident is any adverse event that can compromise health, safety, and welfare of individuals in care and/or staff. An Unusual Incident is any significant occurrence or extraordinary event deviating from regular routine or established procedure, but does not rise to the level of MUI.

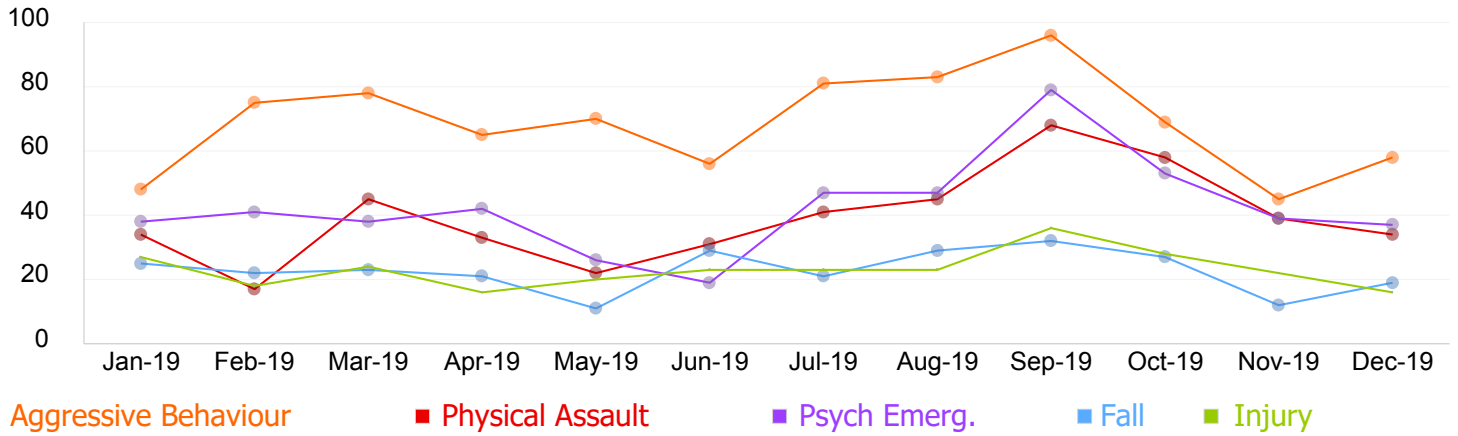
7. Patient-Involved Unusual Incidents



	Jan-19	Feb-19	Mar-19	Apr-19	May-19	Jun-19	Jul-19	Aug-19	Sep-19	Oct-19	Nov-19	Dec-19	Avg	Total
# of Unique Patients in UI	112	105	106	98	97	106	119	108	110	97	98	84	103	1,240
# of Patient-Involved UIs	169	180	197	164	167	160	192	198	241	176	149	156	179	2,149
Patient UI Rate	19.66	22.92	22.90	20.43	20.99	20.27	23.26	23.53	29.02	20.85	18.38	18.77	21.75	--

* The patient UI rate is the number of patient-involved unusual incidents reported for every 1000 inpatient days.

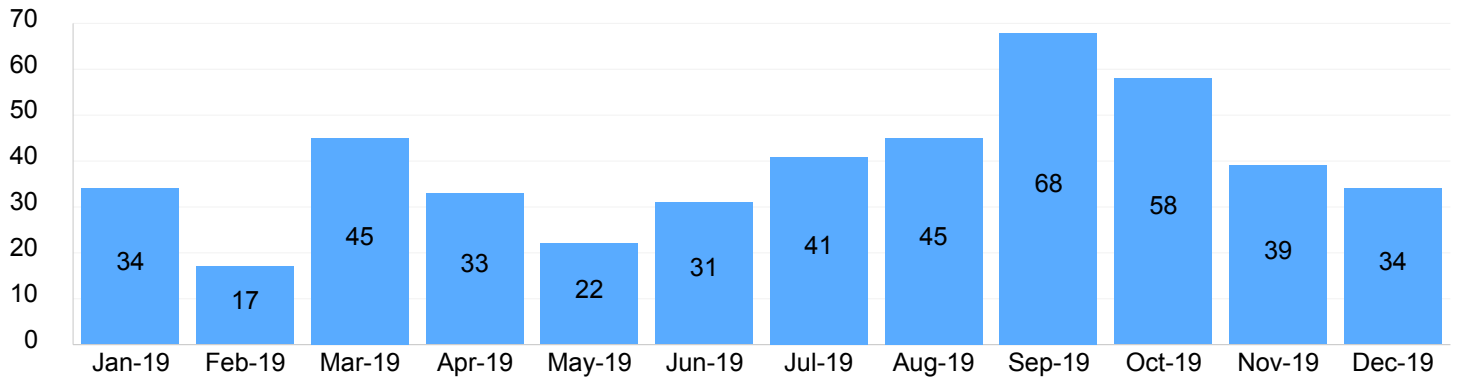
8. Selected Types of Incidents



	Jan-19	Feb-19	Mar-19	Apr-19	May-19	Jun-19	Jul-19	Aug-19	Sep-19	Oct-19	Nov-19	Dec-19	Avg
Physical Assault	34	17	45	33	22	31	41	45	68	58	39	34	39
Injury	27	18	24	16	20	23	23	23	36	28	22	16	23
Psychiatric Emergency	38	41	38	42	26	19	47	47	79	53	39	37	42
Falls	25	22	23	21	11	29	21	29	32	27	12	19	23
Aggressive Behaviour	48	75	78	65	70	56	81	83	96	69	45	58	69

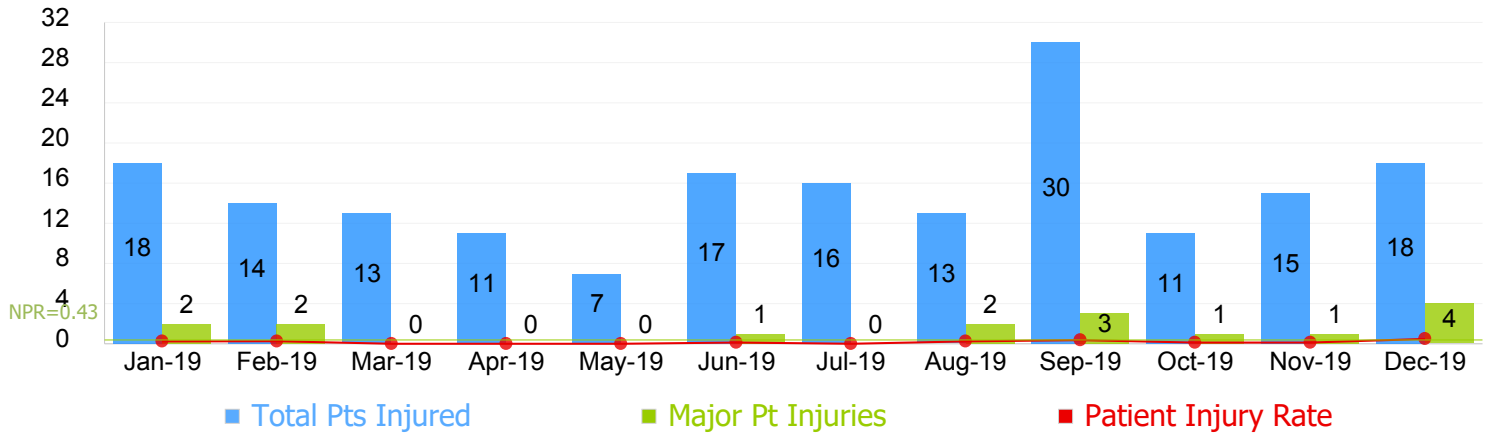
* These are incident types that are frequently reported. Some incidents may be counted in multiple categories. For example, a physical assault incident that accompanied psychiatric emergency and injury is counted under psychiatric emergency and injury as well as under physical assault. Injury is broadly defined to include any type of injury, regardless of the cause or severity level.

9. Physical Assaults



Physical Assault												Avg	Total
Jan-19	Feb-19	Mar-19	Apr-19	May-19	Jun-19	Jul-19	Aug-19	Sep-19	Oct-19	Nov-19	Dec-19		
34	17	45	33	22	31	41	45	68	58	39	34	39	467

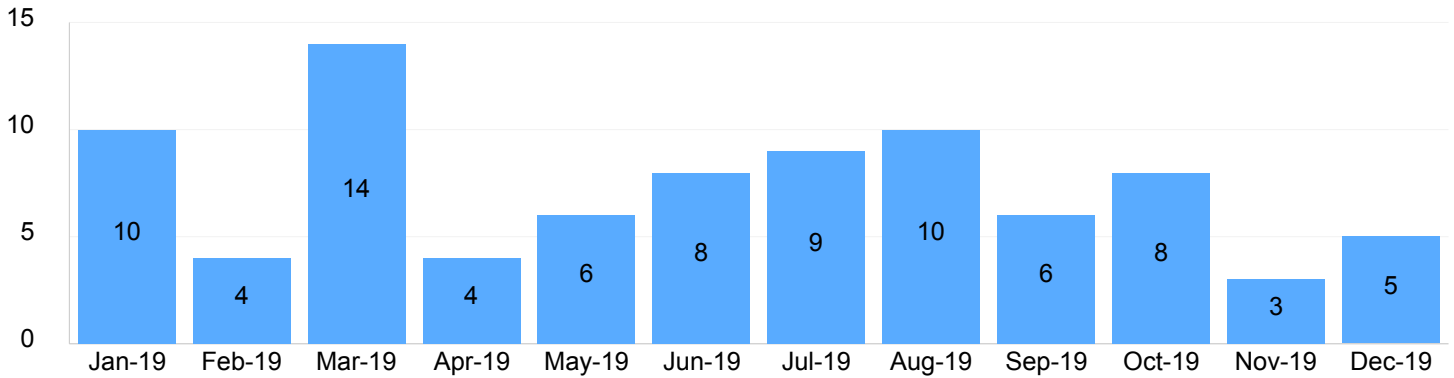
10. Patient Injuries



	Jan-19	Feb-19	Mar-19	Apr-19	May-19	Jun-19	Jul-19	Aug-19	Sep-19	Oct-19	Nov-19	Dec-19	Avg	Total
Total Pts Injured	18	14	13	11	7	17	16	13	30	11	15	18	15	183
Major Pt Injuries	2	2	0	0	0	1	0	2	3	1	1	4	1	16
Patient Injury Rate	0.23	0.25	0.00	0.00	0.00	0.13	0.00	0.24	0.36	0.12	0.12	0.48	0.16	--

*Injury is broadly defined to include any type of injuries regardless of the cause or severity level. The total number of patients injured represents all of the reported injuries including minor injuries treated with first aid alone. However, the patient injury rate considers only the number of patient injuries that required treatment for minor injuries based on the NRI definition. The patient injury rate is the number of 'major' patient injuries per every 1000 inpatient days.

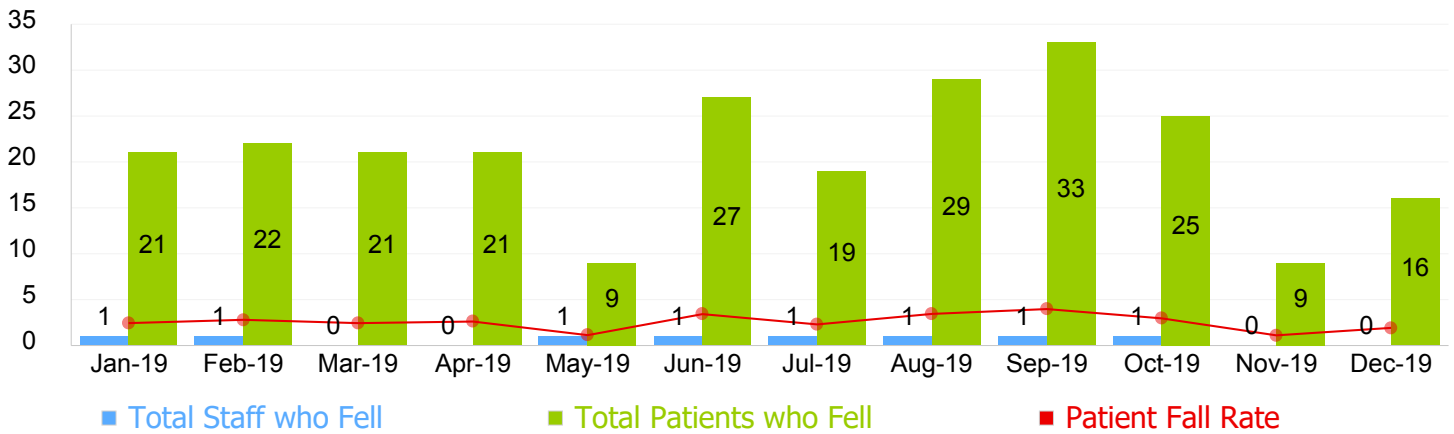
11. Staff Injuries



	Jan-19	Feb-19	Mar-19	Apr-19	May-19	Jun-19	Jul-19	Aug-19	Sep-19	Oct-19	Nov-19	Dec-19	Avg	Total
# of Staff Injured	10	4	14	4	6	8	9	10	6	8	3	5	7	87

*Injury is broadly defined to include any type of injuries regardless of the cause or severity. The total number of staff injured represents all of the reported staff injuries including treatment for minor injuries.

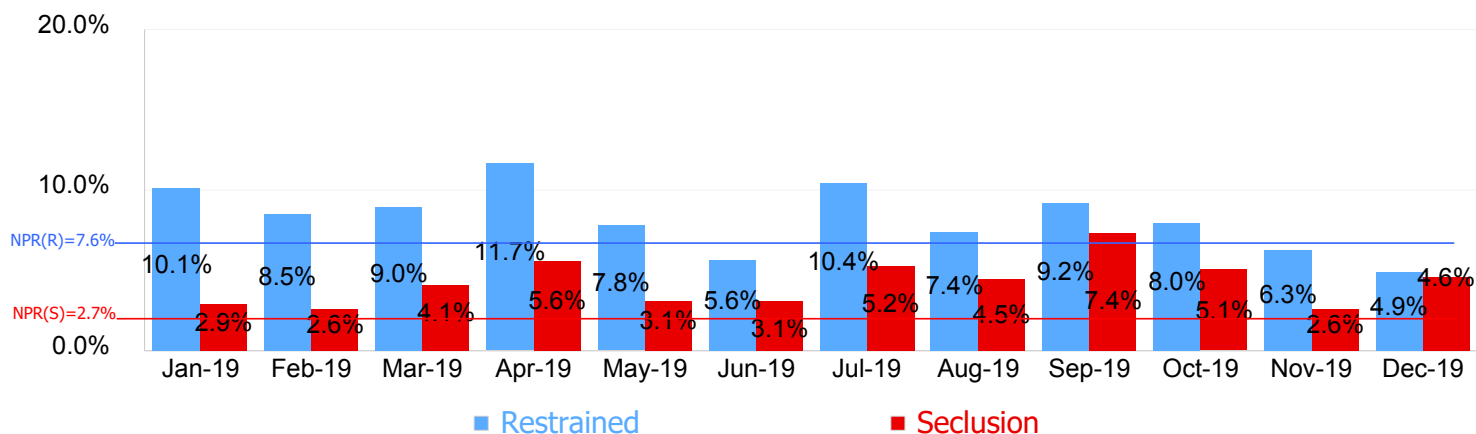
12. Patient and Staff Falls



	Jan-19	Feb-19	Mar-19	Apr-19	May-19	Jun-19	Jul-19	Aug-19	Sep-19	Oct-19	Nov-19	Dec-19	Avg	Total
Total Staff who Fell	1	1	0	0	1	1	1	1	1	1	0	0	1	8
Total Patients who Fell	21	22	21	21	9	27	19	29	33	25	9	16	21	252
Patient Fall Rate	2.44	2.80	2.44	2.62	1.13	3.42	2.30	3.45	3.97	2.96	1.11	1.92	2.55	--

* The patient fall rate is the number of patient falls per every 1000 inpatient days.

13. Percent of Patients Restrained or Secluded

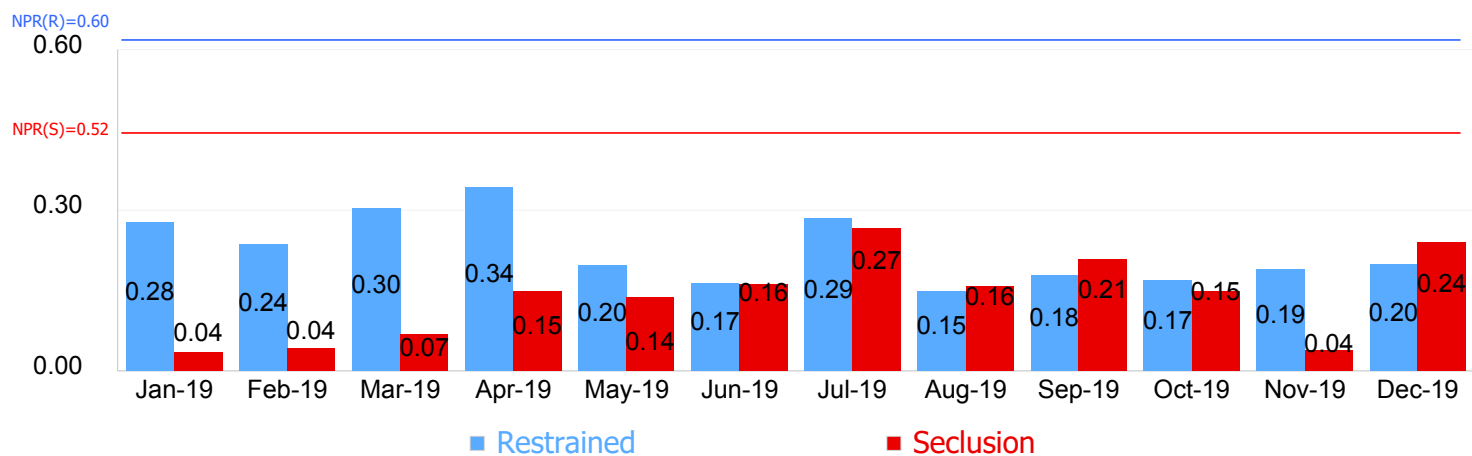


	Jan-19	Feb-19	Mar-19	Apr-19	May-19	Jun-19	Jul-19	Aug-19	Sep-19	Oct-19	Nov-19	Dec-19	Avg
Seclusion	2.9%	2.6%	4.1%	5.6%	3.1%	3.1%	5.2%	4.5%	7.4%	5.1%	2.6%	4.6%	4.2%
Restraint	10.1%	8.5%	9.0%	11.7%	7.8%	5.6%	10.4%	7.4%	9.2%	8.0%	6.3%	4.9%	8.2%

Percent of unique patients who were restrained at least once and percent of unique patients who were secluded at least once. The denominator includes all individuals who were served in care 1+ day during month.

***As of May, 2019, SEH refined the logic of this calculation to count patients who were restrained via a physical hold and a mechanical restraint only once. Previous logic counted the same person twice if they received both a physical hold and mechanical restraint in the same month.

14. Restraint Hours Rate & Seclusion Hours Rate

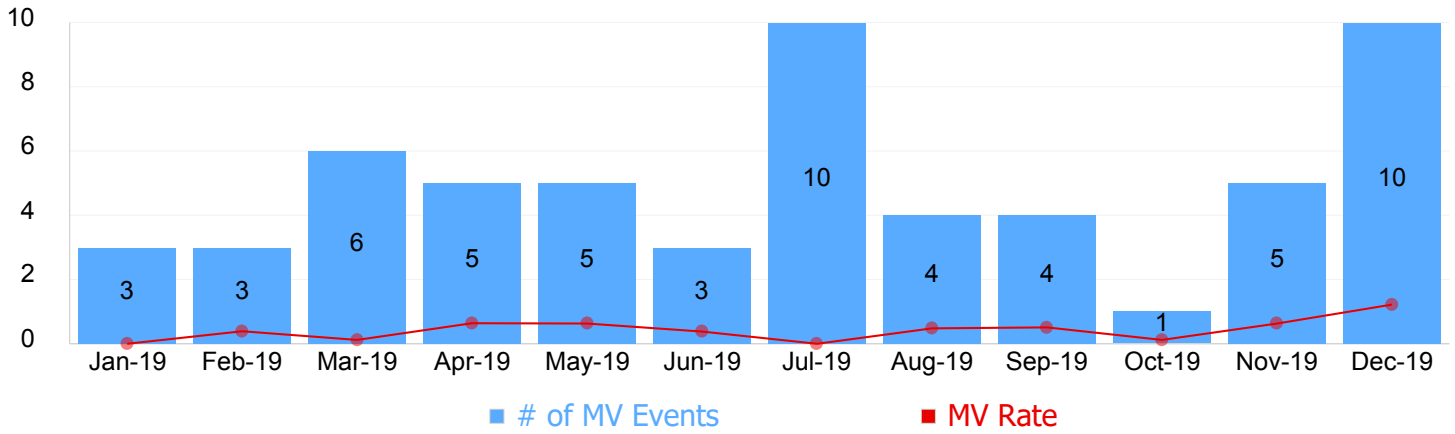


Event Type	Hour Rate												Avg
	Jan-19	Feb-19	Mar-19	Apr-19	May-19	Jun-19	Jul-19	Aug-19	Sep-19	Oct-19	Nov-19	Dec-19	
Restraint	0.28	0.24	0.30	0.34	0.20	0.17	0.29	0.15	0.18	0.17	0.19	0.20	0.22
Seclusion	0.04	0.04	0.07	0.15	0.14	0.16	0.27	0.16	0.21	0.15	0.04	0.24	0.14

* Restraint/Seclusion Hours Rate: Number of hours spent in restraint/seclusion for every 1000 inpatient hours.

** The duration of each physical hold event is counted as 1 minute as a physical hold is ordered and used only as a temporary intervention that lasts less than a minute to break up any physical conflicts or to administer emergency medications

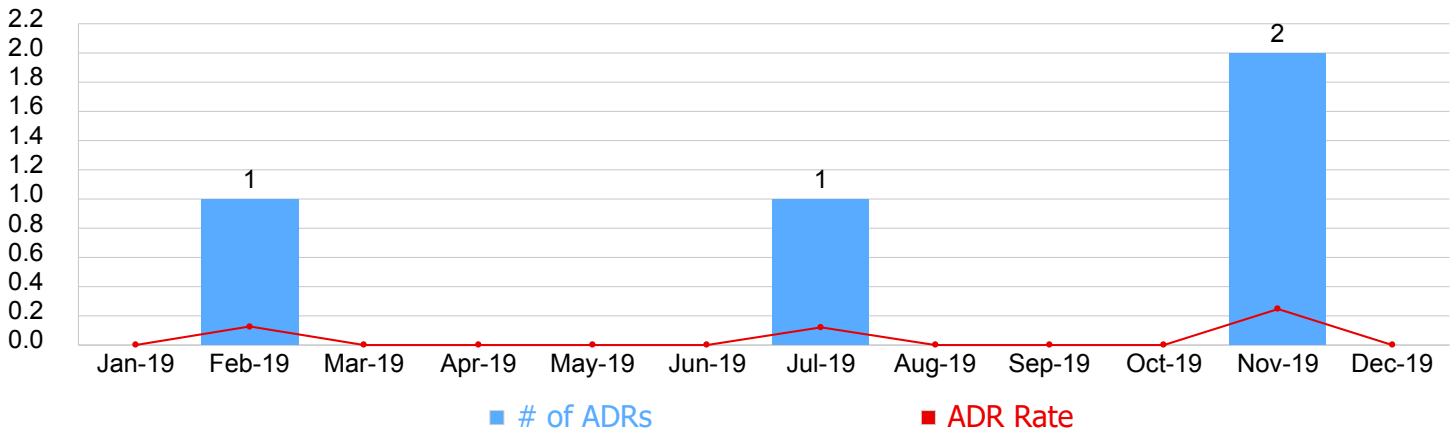
15. Reported Medication Variance Events & Rate



	Jan-19	Feb-19	Mar-19	Apr-19	May-19	Jun-19	Jul-19	Aug-19	Sep-19	Oct-19	Nov-19	Dec-19	Avg	Total
# of MV Events	3	3	6	5	5	3	10	4	4	1	5	10	5	59
MV Rate	0.00	0.39	0.12	0.64	0.63	0.38	0.00	0.48	0.51	0.12	0.63	1.22	0.43	5.12

* MV Rate: Number of reported medication variance events that occurred for every 1000 inpatient days.

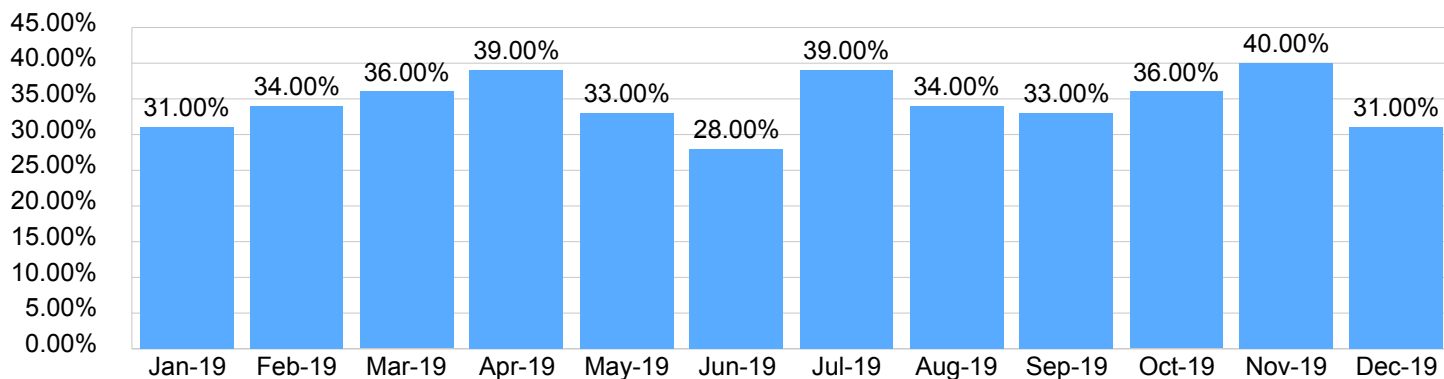
16. Reported Adverse Drug Reactions & Rate



	Jan-19	Feb-19	Mar-19	Apr-19	May-19	Jun-19	Jul-19	Aug-19	Sep-19	Oct-19	Nov-19	Dec-19	Avg	Total
NumADRs	0	1	0	0	0	0	1	0	0	0	2	0	0	4
ADR Rate	0.00	0.13	0.00	0.00	0.00	0.00	0.12	0.00	0.00	0.00	0.25	0.00	0.04	--

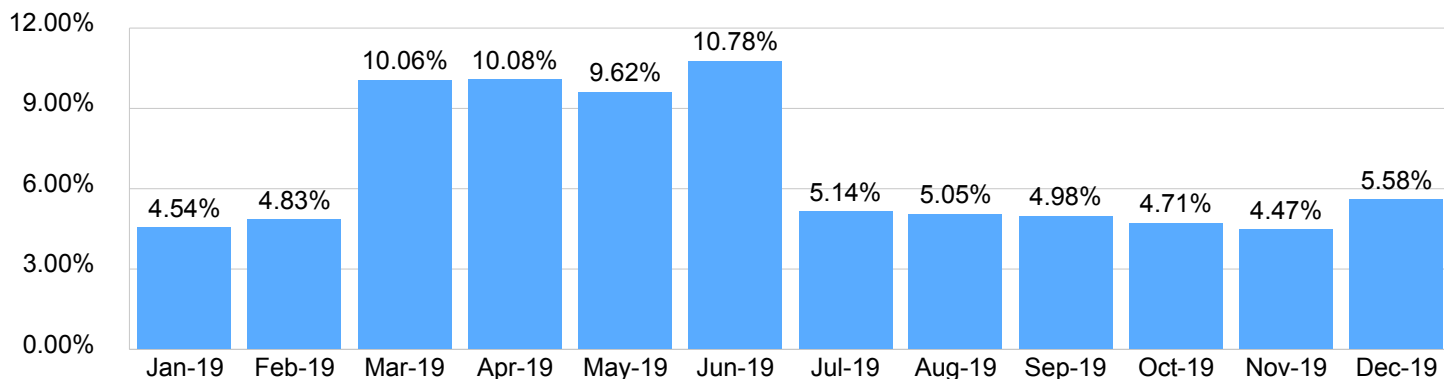
* ADR Rate: Number of reported adverse drug reaction events that occurred for every 1000 inpatient days.

17. Percent of Missing Documentation on Med-Administration



Event Type	Rate												Avg
	Jan-19	Feb-19	Mar-19	Apr-19	May-19	Jun-19	Jul-19	Aug-19	Sep-19	Oct-19	Nov-19	Dec-19	
PercOfMissingDocumentation	31.00%	34.00%	36.00%	39.00%	33.00%	28.00%	39.00%	34.00%	33.00%	36.00%	40.00%	31.00%	34.50%

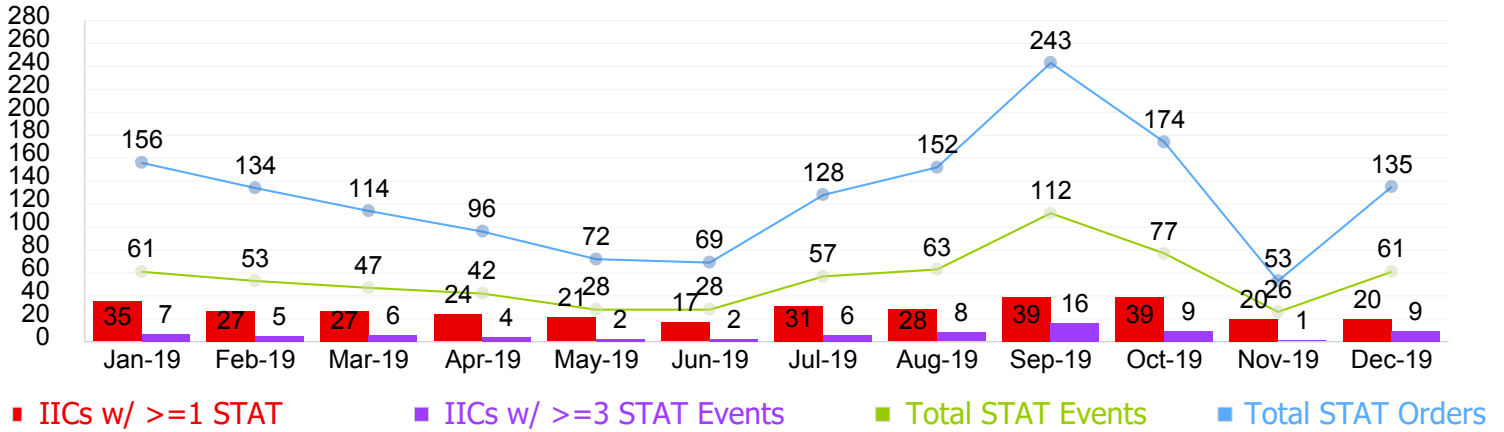
18. Medication Refusal Rate



	Jan-19	Feb-19	Mar-19	Apr-19	May-19	Jun-19	Jul-19	Aug-19	Sep-19	Oct-19	Nov-19	Dec-19
Medication Refusal Rate	4.54	4.83	10.06	10.08	9.62	10.78	5.14	5.05	4.98	4.71	4.47	5.58

* Medication Refusal Rate: the number of refused medication doses divided by the total number of doses scheduled for administration.

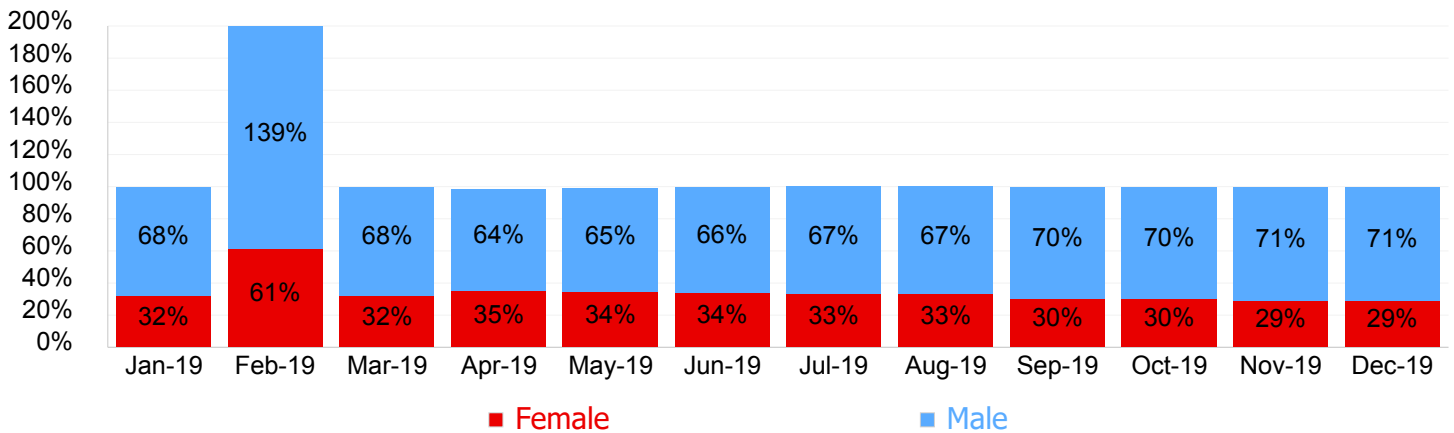
19. Number of STAT Events and Individuals Involved



	Jan-19	Feb-19	Mar-19	Apr-19	May-19	Jun-19	Jul-19	Aug-19	Sep-19	Oct-19	Nov-19	Dec-19	Avg	Total
IICs w/ >=1 STAT	35	27	27	24	21	17	31	28	39	39	20	20	27	328
IICs w/ >=3 STAT Events	7	5	6	4	2	2	6	8	16	9	1	9	6	75
Total STAT Events	61	53	47	42	28	28	57	63	112	77	26	61	55	655
Total STAT Orders	156	134	114	96	72	69	128	152	243	174	53	135	127	1,526

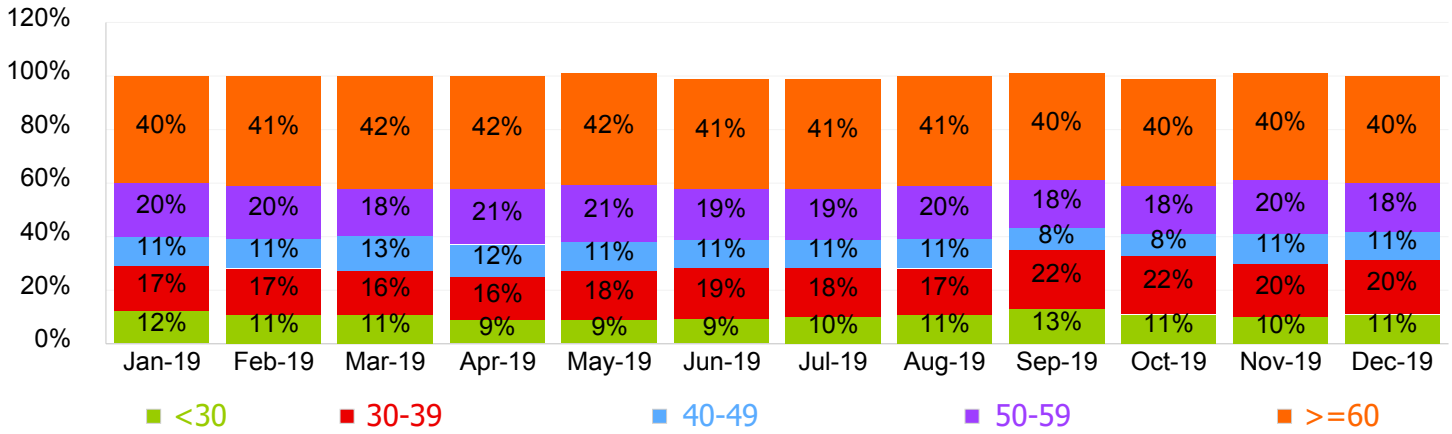
* A STAT event is an emergency medication prescribed and administered to a person involuntarily.

20. Demographics - Trend of Gender Distribution



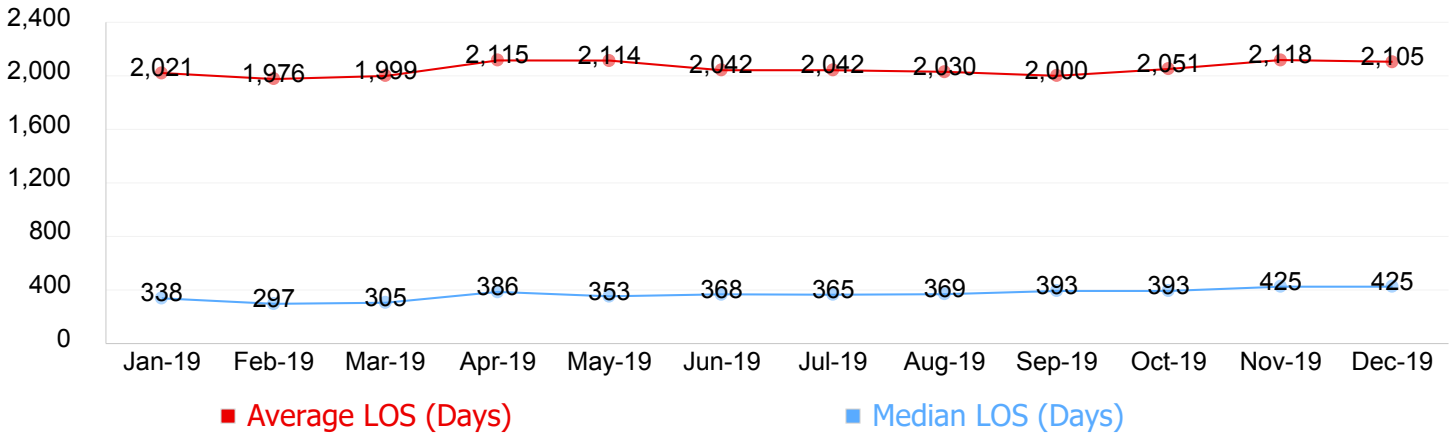
Gender	Rate												Avg
	Jan-19	Feb-19	Mar-19	Apr-19	May-19	Jun-19	Jul-19	Aug-19	Sep-19	Oct-19	Nov-19	Dec-19	
Female	32%	61%	32%	35%	34%	34%	33%	33%	30%	30%	29%	29%	34%
Male	68%	139%	68%	64%	65%	66%	67%	67%	70%	70%	71%	71%	74%

21. Demographics - Trend of Age Distribution



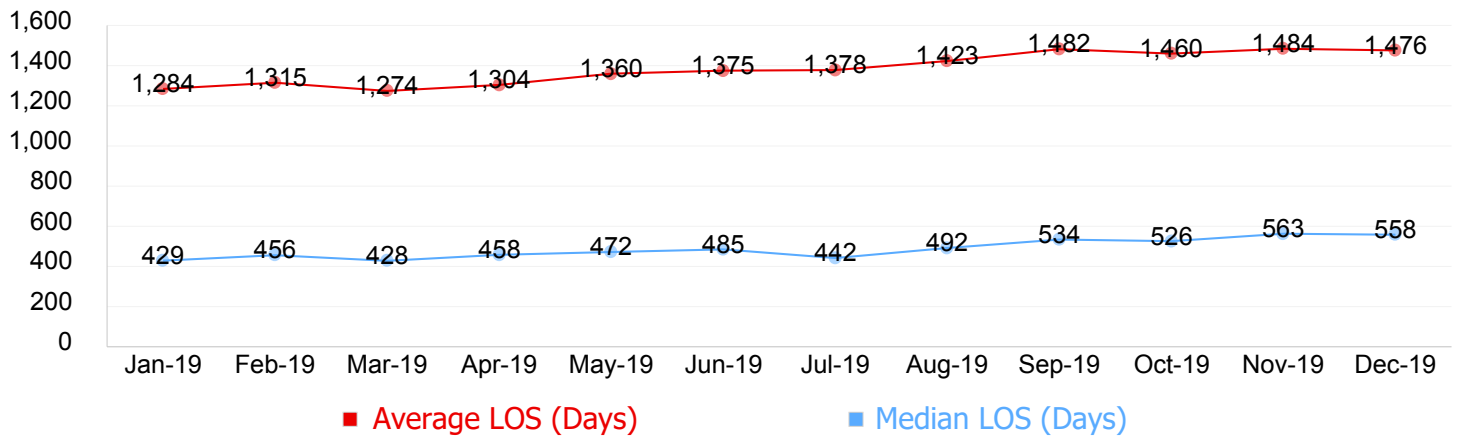
Age Group	Rate												Avg
	Jan-19	Feb-19	Mar-19	Apr-19	May-19	Jun-19	Jul-19	Aug-19	Sep-19	Oct-19	Nov-19	Dec-19	
<30	12%	11%	11%	9%	9%	9%	10%	11%	13%	11%	10%	11%	11%
30-39	17%	17%	16%	16%	18%	19%	18%	17%	22%	22%	20%	20%	19%
40-49	11%	11%	13%	12%	11%	11%	11%	11%	8%	8%	11%	11%	11%
50-59	20%	20%	18%	21%	21%	19%	19%	20%	18%	18%	20%	18%	19%
60+	40%	41%	42%	42%	42%	41%	41%	41%	40%	40%	40%	40%	41%

22. Length of Stay - Average and Median Length of Stay for Individuals in Care



Type	Individuals In Care											
	Jan-19	Feb-19	Mar-19	Apr-19	May-19	Jun-19	Jul-19	Aug-19	Sep-19	Oct-19	Nov-19	Dec-19
Average LOS	2,021	1,976	1,999	2,115	2,114	2,042	2,042	2,030	2,000	2,051	2,118	2,105
Median LOS	338	297	305	386	353	368	365	369	393	393	425	425

23. Length of Stay - Length of Stay for Individuals in Care with Civil Legal Status



Type	Civil											
	Jan-19	Feb-19	Mar-19	Apr-19	May-19	Jun-19	Jul-19	Aug-19	Sep-19	Oct-19	Nov-19	Dec-19
Average LOS	1,284	1,315	1,274	1,304	1,360	1,375	1,378	1,423	1,482	1,460	1,484	1,476
Median LOS	429	456	428	458	472	485	442	492	534	526	563	558