



Saint Elizabeths Hospital
Clinical Psychology Postdoctoral
Fellowship Program- Enhanced Forensic Track
2025-2026

Mark J. Chastang, MPA, MBA
Chief Executive Officer

Richard Gontang, Ph.D.
Chief Clinical Officer

Richard Boesch, Ph.D.
Director of Psychology

Carla Sterling, Psy.D.
Director of Psychology Training

Shilpa Krishnan, Ph. D.
Co-Director of Psychology Training (Enhanced Forensic Evaluation Fellowship)

TABLE OF CONTENTS

GREETINGS	3
SAINT ELIZABETHS HOSPITAL HISTORY	4
History of Psychology at Saint Elizabeths	
PROGRAM PHILOSOPHY AND TRAINING MODEL	10
FELLOWSHIP AIMS, OBJECTIVES AND COMPETENCIES	10
FELLOWSHIP PROGRAM DESCRIPTION	11
ENHANCED FORENSIC EVALUATION TRACK	12
Program Components	12
Rotations	14
GENERAL INFORMATION	16
Work Hours, Stipend, Benefits, Leave	
Number of Positions	
TRAINING FACULTY	18
ELIGIBILITY	25
APPLICATION PROCEDURE	26
INTERVIEW DATES AND LOCATION	27
TRAINING POSITION OFFERS	28
PUBLIC DISCLOSURE	29

GREETINGS!

We at Saint Elizabeths Hospital (SEH) are delighted that you are interested in our postdoctoral Fellowship in forensic psychology. Saint Elizabeths Hospital, in Washington, DC, is a publicly funded inpatient psychiatric hospital, with approximately 300 beds distributed among 12 forensic and civil units. Our Fellowship program offers the opportunity to hone your clinical skills while working with a severely mentally ill, urban, minority patient population. Our program provides the training needed to prepare you for your career as a psychologist in the behavioral health workplace. Our faculty is composed of excellent clinicians of diverse backgrounds, theoretical orientations, and skill sets who are role models for psychologists in public mental health. They have a wide range of clinical experiences and training they draw upon to educate you on how to apply best practices with severely mentally ill individuals in an inpatient public mental health setting. We offer a challenging and varied educational experience that exposes you to the many different roles that psychologists play in a public mental health hospital and to the different stages of psychopathology as individuals in care undergo treatment. We are committed to fostering your professional development and preparing you for your future career as a professional psychologist.

This brochure includes information about the hospital, the psychology department, and the Fellowship training program. Its purpose is to provide you with information needed to make an informed decision about whether this program is a good fit for your interests and training needs.

SAINT ELIZABETHS HOSPITAL HISTORY

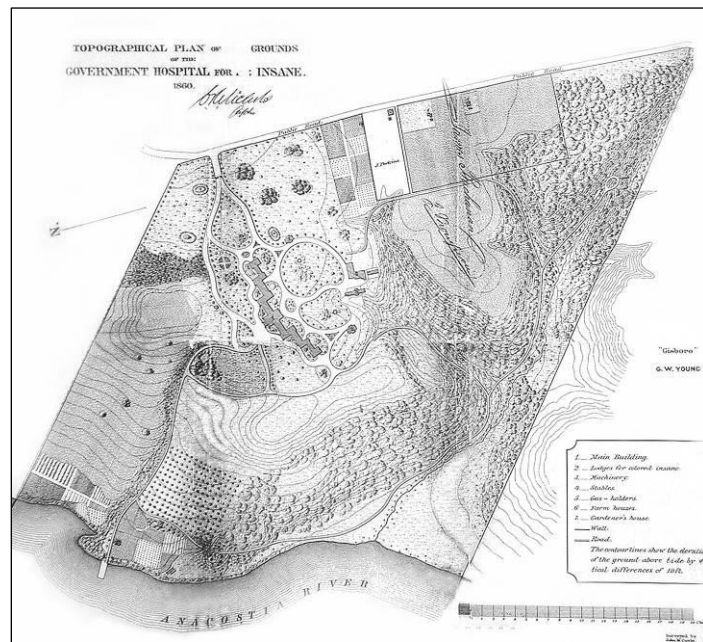
By Jogues R. Prandoni, Ph.D., Suryabala Kanhouwa, M.D., and Richard Gontang, Ph.D.



Dorothea Lynde Dix

Saint Elizabeths Hospital, originally known as the Government Hospital for the Insane, was founded by Congress in 1852 through the efforts of Dorothea Lynde Dix. Ms. Dix was a pioneering mental health reformer who worked to change the view of the mentally ill and how to properly care for them. She advocated for the mentally ill to “provide the most humane care and enlightened curative treatment” for the insane. The founding legislation for the hospital,

written by Dix herself, opened the hospital to patients from the Army and Navy as well as both black and white Fellows of the District of Columbia. Saint Elizabeths was America’s first federal mental hospital, and it was the first public mental hospital in the District of Columbia.



1860 Site Drawing of the Grounds of Saint Elizabeths Hospital

Situated on a bluff overlooking the convergence of the Anacostia and Potomac rivers, the hospital became known as “Saint Elizabeths”—often appearing in print as just “Saint Elizabeth”—after the old colonial land grant on which it was built. Congress officially renamed the institution in 1916, codifying the characteristic plural spelling that remains today. Lush, landscaped grounds were an integral part of campus planning at Saint Elizabeths throughout its history. Dix selected the hospital’s commanding location, with its panoramic view of Washington, because the serene setting was believed critical to patients’ recovery, according to contemporary theories of moral therapy. Numerous efforts over time to improve the natural environment that patients encountered resulted in a wealth of gardens, expansive lawns, fountains, ponds, and graded walks. It was, according to writer Ina Emery, “a garden of

beauty through which the gods might wander....Indeed, it is one of the most attractive parks within the District of Columbia.”



1916 Architect's Sketch of Saint Elizabeths Hospital



View from the Point, West Campus, Saint Elizabeths Hospital



Saint Elizabeths' historic prominence among American mental hospitals is reflected in the fact that its first five superintendents were all elected and four served (due to death of one of the superintendents) as president of the American Psychiatric Association and its predecessor organizations. During their tenure, the hospital served as a center for training psychiatrists, psychologists, nurses, medical doctors, and countless scientists and researchers. It was for many years a leader in introducing innovations in the treatment of persons with mental disorders or adopting

new forms of treatment, such as art therapy, psychodrama, and dance therapy. It also contributed to the development of forensic psychiatry as a specialty and was a strong voice in the creation of forensic case law and mental health legislation. For example, its superintendents from the beginning opposed the requirement of a public jury trial in all lunacy proceedings in the District of Columbia, eventually leading, in 1938, to federal legislation creating a Commission on Mental Health and the authorization of private commitment hearings.



Center Building, 1896



Center Building, 2003

The hospital boomed in the first half of the twentieth century, only to face a steady decline in patient population and services in the second. The hospital was the only government facility to treat mentally ill military personnel until 1919, and World War II brought in the largest patient numbers in its history. In 1946, however, Congress ended the long association between the hospital and the armed forces, in favor of treatment at the nation's expanding system of veteran's hospitals. District patients and other federal dependents remained, but advances in psychopharmacology, the development of community-based alternatives to institutionalization, and new attitudes toward mental health care subsequently reduced the need for large public mental hospitals. Although the establishment of the National Institutes of

Mental Health's Neuroscience Center on the hospital grounds in 1971 continued the tradition of pioneering research on the campus, it did nothing to stave off falling patient numbers.

In 1987, the federal government transferred operation of Saint Elizabeths and ownership of the 118-acre east campus to the District of Columbia. Saint Elizabeths then merged with the city's mental health administration to become the DC Commission on Mental Health Services (CMHS). In April 2001, as part of major restructuring of the city's mental health system, a bill was passed in the District of Columbia's City Council establishing the city's Department of Mental Health. The Department of Mental Health was made responsible for regulating the District's community-based network of mental health care. Saint Elizabeths Hospital, the District of Columbia's Community Services Agency (DC CSA) and the Mental Health Authority were established as three distinct agencies within the Department of Mental Health, each with its own administration and separate functions.

As the patient population continued to decrease, the hospital closed numerous vacant buildings and consolidated all services to city-owned land. The historic west campus was taken by the federal government to become the headquarters for the Department of Homeland Security, and the hospital's functions were consolidated to the east campus. In 2005, the hospital broke ground on a new state-of-the-art building on the east campus, the goals being to unify the hospital's functions and modernize the care and living conditions for the hospital's patient population.



[Saint Elizabeths Hospital Building](#)

The hospital building reflects our hospital administration's forward thinking and its historical standing as an innovator in provision of care and in the development of therapeutic living environments for the mentally ill. Saint Elizabeths Hospital is proud to have had a psychologist as its Chief Executive Officer and a psychologist as its current Chief Clinical Officer.

History of Psychology at Saint Elizabeths

William Alanson White, the fourth superintendent (1903-1937), was a leading figure in 20th century psychiatry, and he steered St. Elizabeths even further toward the scientific vanguard by establishing a psychology laboratory and subsequently forming the first psychology department in any mental hospital, which celebrated its 100th anniversary in 2007. The following section chronicles the creation of the department:

100th Anniversary of Psychology Department

Saint Elizabeths Hospital

By

Suryabala Kanhouwa, M.D.

Jogues R. Prandoni, Ph.D.

Dr. White ushered in the scientific era at the hospital. An integral part of this process involved establishing a Psychology Department at Saint Elizabeths as “an expression of the most advanced trends in modern psychiatry.” He strongly believed that the hospital “... should add its quota to the sum of knowledge on this very important subject.” At the same time, Dr. White recognized that “the methods of normal psychology must be modified to suit the changed conditions.”



Shepherd Ivory Franz, Ph.D.

To this end, on January 1, 1907, he appointed Shepherd Ivory Franz, Ph.D., who received a doctorate in psychology from Columbia University and had worked at Harvard and Dartmouth Medical Schools, the first Psychologist and Director of Research at Saint Elizabeths Hospital.

Dr. Franz’s first assignment was to develop a clinical examination procedure that could be used as a basis for the routine examination of patients. In response to this challenge, he contributed a chapter on psychological examination methods to White’s 1908 well-known textbook *Outline of Psychiatry*. He later expanded the chapter to become a separate book titled *Handbook of Mental Examination Methods* (1912).

During his seventeen years at Saint Elizabeths Hospital, Dr. Franz witnessed what he described as the “volcanic rise of psychoanalytic belief....Even the organic neurological had assumed value only if correlated with the Freudian mental mechanism.” Dr. Franz provided a much needed balance during this era of rapidly evolving theories and knowledge of mental disorders by focusing on experimental and clinical neuropsychology. In spite of numerous teaching and administrative responsibilities, he remained committed to research. His diverse areas of scientific inquiry included extensive work on the localization of the cerebral functions, psychopathological, touch and other skin sensations, the cerebrum, and

rehabilitation and re-education following brain injury especially as it related to war veterans. He authored numerous scientific publications and is credited with 32 articles and numerous books. During his tenure at Saint Elizabeths Hospital, he also served as the editor of the Psychological Bulletin (1912—1924) and as the President of the American Psychological Association (1920).

Dr. Franz left St. Elizabeths Hospital in 1924 to become the first chairman of Department of Psychology at UCLA where he was highly instrumental in the development of their graduate studies programs. He died on October 14, 1933, following the onset of amyotrophic lateral sclerosis. In 1940, the university opened Franz Hall, a Life Science building named in his honor, to house the Psychology Department.

Shepherd Ivory Franz was one of the preeminent psychologists during the first part of the 20th century. He was distinguished in the field of neurological and physiological psychology. Under his leadership, studies conducted by Saint Elizabeths Hospital's Psychology Laboratory were influential in the development of the field of clinical psychology. Among his numerous professional contributions, historians credit him with founding the first psychological laboratory in a hospital (McLean Hospital) in 1904, and the first implementation of routine psychological testing for patients in a mental hospital (Saint Elizabeths Hospital) in 1907.

Dr. Franz is but one of many famous mental health pioneers to work or train at Saint Elizabeths, including E.G. Boring, Margaret Ives, Carl Jung, Karl S. Lashley, Hans Strupp, Harry Stack Sullivan, and Alexander Wolfe. We are proud to note that a number of former Chief Executive Officers of the hospital are psychologists who graduated from our training program, as are many of the current faculty members.

Today, psychologists in Saint Elizabeths Hospital continue to make significant contributions to patients' growth and recovery from mental disorders. Psychology's leadership and contributions in diverse areas such as risk management, cognitive behavioral therapy and co-occurring disorders are helping patients develop new ways of thinking, behaving and mastering life's challenges facilitating their successful return to the community, and enhancing the quality of their lives.

PROGRAM PHILOSOPHY AND TRAINING MODEL

The Psychology staff maintains a strong commitment to the training of postdoctoral Fellows and makes every effort to provide as enriching an experience as possible within an atmosphere of mutual respect and professionalism. We endeavor to achieve a good balance between serving the clinical needs of the patient population and savoring the training process. This perspective is reflected in the quality and quantity of supervision that has characterized the program over the years. Our training program utilizes a Practitioner Apprenticeship model, and Fellows work alongside forensic psychologists to complete assessments in various settings. This model helps Fellows develop through experiential learning, or “learning by doing.” This supervised practice under the guidance of experienced practitioners contributes to the development of mentoring relationships with senior professionals and to skill development over the course of the Fellowship year. Fellows are considered junior colleagues and soon function with increasing independence and autonomy while respecting appropriate boundaries of supervision. We are committed to helping Fellows develop their own professional identities as they expand and refine their clinical competencies.

FELLOWSHIP AIMS, OBJECTIVES AND COMPETENCIES

The primary aim of the Enhanced Forensic Evaluation Track of the Clinical Psychology Fellowship program is to produce graduates who have the knowledge and skills necessary for the practice of forensic psychology. Program graduates should be equipped to deliver a range of forensic psychological services in a variety of psycholegal settings. After completing the training program, graduates should be ready for entry-level doctoral positions that incorporate applications of their general and specialized clinical and forensic skills.

Our training program focuses on the development of our Fellows’ professional skills in the following areas of competency:

- Specialized forensic evaluation
- Psychological Assessment
- Ethical & Professional Behavior
- Consultation
- Cultural Competency
- Teaching

FELLOWSHIP PROGRAM DESCRIPTION

The Enhanced Forensic Evaluation Track of the Clinical Psychology Fellowship Program at Saint Elizabeths Hospital is funded and housed within the Department of Psychology. Psychology trainees are employees of Saint Elizabeths Hospital. The Fellowship is a twelve-month, full-time experience beginning on or about September 1st of each year and ending on or about August 30th of the following year, depending on correspondence with government pay period. The Fellowship is 12 months and 2000 hours and fulfills the requirements for hours and supervision for licensure as a psychologist in the District of Columbia. The program offers training experiences including forensic assessment and didactic seminars. The forensic assessment services provided by Fellows occur in a variety of settings, to include inpatient, outpatient, jail-based, and court clinic settings.

The administrative structure of Saint Elizabeths Hospital in relationship to the training program is as follows:

- Chief Executive Officer
- Chief Clinical Officer
- Director of Psychology
- Director/Co-Director of Psychology Training Fellow

ENHANCED FORENSIC EVALUATION TRACK

The program of training for the Enhanced Forensic Evaluation Track offers a year of specialized didactics and supervised clinical experiences intended to prepare trainees for a career as a Forensic Psychologist. Fellows spend approximately seventy-five percent (75%) of their time involved in service delivery (conducting forensic and forensically relevant evaluations). The remaining twenty-five percent (25%) is spent in didactic seminars, supervision, and teaching. The Enhanced Forensic Evaluation Track is structured into one major and three minor rotations for the duration of the year. This track involves the unique opportunity to deliver forensic services in a range of contexts: inpatient, outpatient, and correctional settings.

Program Components

Supervision

Intensive clinical supervision is the cornerstone of the Fellowship. Each Fellow receives a minimum of 3 hours of supervision per week provided by licensed clinical psychologists or psychiatrists, in addition to direct observation of forensic interviews. Fellows work with various supervisors over the course of the year in an attempt to expose them to a variety of role models, supervision styles, and theoretical orientations. Each Fellow is assigned a supervisor for each of their major and minor rotations, as well as an Assessment supervisor.

Fellows in the Enhanced Forensic Evaluation Track do not receive training or experience in the provision of supervision to psychology externs.

Psychological Assessment

In addition to developing skills in pre- and post-trial forensic evaluations, fellows in the Enhanced Forensic Evaluation Track are expected to expand their skills in responding to additional, forensically relevant assessment referral questions, including violence and sexual violence risk assessment, and need for civil commitment. Trainees will receive training and supervision in the administration and interpretation of specialized assessment tools, as applicable. There are opportunities to conduct these evaluations for both inpatient individuals in care and outpatient consumers. The Fellow will complete a minimum of four forensically-relevant assessments with emphasis on specialty evaluations, e.g., aid in sentencing, risk assessment, and criminal responsibility. One evaluation can be a civil commitment evaluation.

Clinical Case Presentation

Fellows in the Enhanced Forensic Evaluation Track present one clinical case during their Fellowship year. This involves presenting an evaluation case to members of the Forensic Consultation Service.

Presentations involve discussion of the evaluatee’s clinical-forensic presentation, addressing the psycho-legal question, discussion of any forensic assessment instruments used, consideration of the ethical and legal factors involved, and discussion of cultural considerations pertinent to the selected case.

Seminars & Training Opportunities

Fellows in the Enhanced Forensic Evaluation Track attend the Forensic Seminar Series on Fridays from about 8:00 a.m. – 12:00 p.m. facilitated by the Walter Reed National Military Medical Center. All Fellows are welcomed to attend seminars that are offered as part of our internship training program if they are interested in supplementing their previous internship training. Fellows are able to attend the following didactic seminars:

- Assessment Seminar
- Psychopharmacology Seminar
- Forensic Psychology Seminar (including Landmark Case presentations)
- Ethics Seminar

All Fellows are encouraged to attend DBH-sponsored educational opportunities such as Grand Rounds, trainings offered by other hospital training departments, such as Psychiatry Training, and those sponsored by local associations such as The District of Columbia Psychological Association. Fellows are also welcome to attend continuing educational activities sponsored by the hospital’s Department of Psychology. Recent trainings have included a review of the District of Columbia civil commitment process with members of the Commission on Mental Health, and a mock trial with the Office of the Attorney General regarding how to respond to cross examination as an expert witness.

Teaching

Fellows in the Enhanced Forensic Evaluation Track are required to present one didactic seminar to the psychology internship or externship program as part of the program’s seminar series. The seminar session will be on a forensically relevant topic (e.g., competency restoration or evaluation).

Research

Fellows in the Enhanced Forensic Evaluation Track are encouraged to participate in or conduct their own research according to their interests during their training year. The Hospital has an Institutional Review Board that reviews and approves research, and we encourage scholarly research that benefits the Hospital’s mission and the Fellow’s career goals. The Hospital also has an excellent library with access to books from the National Library of Medicine and online access to multiple databases to further support research endeavors. Articles and texts are available through interlibrary loan services as well.

Evaluation Procedures

Supervisors formally evaluate Fellows on a regular basis. Evaluations are discussed with the trainee and signed by both the trainee and supervisor. The Co-Director of Psychology Training (Enhanced Forensic Evaluation Fellowship) and the training faculty also meet monthly to allow for ongoing monitoring of trainees' performance. Fellows will also be asked to evaluate supervisors to provide feedback about the supervision process. Written reviews of the Fellow's competency are completed by training staff at the end of each minor rotation (i.e., every four months) and the mid- and end-of-year time frame for the major rotation. Any unacceptable ratings or deficits in expected levels of competency are discussed during these meetings, and a consensus is reached as to whether or not a problem is serious enough to be considered a deficiency, or whether continued individual supervision (with specific recommendations) is sufficient to remedy the situation. The procedures for notice, hearing, and appeal are further outlined in the program handbook. Fellows are provided information about the due process and grievance policies at the beginning of the training year following a two-week hospital orientation training and are required to sign an acknowledgement form indicating receipt of these policies.

Rotations

Fellows in the Enhanced Forensic Evaluation Track complete **one** major (12-month) and **three** minor (4-month) rotations.

The **major** rotation is a year-long placement with the **Forensic Consultation Service (FCS)**. In this rotation, trainees conduct pretrial psychological evaluations of individuals admitted to SEH for competency restoration (as well as other potential referral questions). Trainees will gain experience with competency-based assessment measures and writing letters to the Court for inpatient individuals in care. Supervision is conducted by licensed psychologists on the Forensic Consultation Service and/or psychologists/psychiatrists from the Forensic Services Division (FSD).

The Fellow's **first 4-month minor rotation** placement is at the **Outpatient Competency Restoration Program (OCRCP) in Northeast DC**. The OCRCP provides group competency restoration sessions (and individual sessions on a case-by-case basis) to individuals who have been found incompetent by the Court and who remain in the community. Trainees will gain experience with competency-based assessment measures and writing letters to the Court for outpatient consumers. Supervision is conducted by licensed psychologists or psychiatrists at the OCRP.

The Fellow's **second 4-month minor rotation** placement is at the **Forensic Service Division (FSD) Outpatient Office at the DC Superior Court courthouse**. Trainees will gain experience conducting pretrial evaluations (e.g., preliminary competency screenings and full competency evaluation) for

individuals who reside in the community. Opportunities may also arise for specialized evaluations such as sentencing evaluations or criminal responsibility evaluations. Supervision is provided by licensed psychologists/psychiatrists with the FSD.

The Fellow's **third 4-month minor rotation** placement will be with **FSD evaluators at the D. C. Jail (Central Detention Facility and Central Treatment Facility)**. Trainees will gain experience conducting pretrial evaluations (e.g., preliminary competency screenings and full competency evaluation) for individuals who are currently detained. Due to Covid-19 safety precautions, these evaluations are currently being conducted via telehealth, which may be subject to change. In this placement, trainees will gain experience completing forensic evaluations within a short time frame. Supervision is provided by licensed psychologists/psychiatrists with the FSD.

Please note that the Enhanced Forensic Evaluation Track requires travel off-site (i.e., outside of SEH) for some training activities.

GENERAL INFORMATION (applicable to all fellowship tracks)

Work Hours

Work hours are generally from 8:30 am to 5:00 pm, Monday through Friday for a total of 40 hours per week. Lunch is 30 minutes. Hours may vary at off-campus sites.

Stipend

The current stipend is \$72,751 and is subject to salary increase at the start of the fiscal year in October. Fellows are represented by the psychologists' union in a collective bargaining agreement with the DC government regarding contract salary and benefits. They receive union benefits and yearly salary increases as defined by the contract. Paychecks are issued every two weeks, and directly deposited into one's bank account. Please note that stipends are limited to twelve months. Fellowships cannot be extended past the twelve-month period, and Fellows do not receive over- or compensatory time.

Benefits

As employees of the Government of the District of Columbia, interns are entitled to Health, Dental, Vision, short and Long term disability, and life insurance benefits. Appropriate documentation must be completed with Human Resources. A total of \$1300 per calendar year is offered to each trainee to attend work-related training/learning experiences.

Leave

Annual and sick leave are each earned at the rate of four hours per pay period accruing 13 days of annual and 13 days of sick leave per training year. There are also 11 paid holidays. Administrative Leave totaling up to 10 days are offered to each trainee to attend relevant conferences and continuing education programs.

Number of Positions

One full-time Fellowship position in the Enhanced Forensic Evaluation Track is anticipated for this training year.

SAINT ELIZABETHS HOSPITAL RESOURCES

Saint Elizabeths Hospital Medical Clinic, Room 114.08

Health Sciences Library, Room 256

- Interlibrary loan services with the National Library of Medicine are available
- Internet database access (e.g., OVID & EBSCO host) accessible from work or home computer

Education and Staff Development Department, Room 248

Employee Assistance Program

- INOVA 1-800-346-0110 Website: inova.org/eap
- Confidential counseling services are available

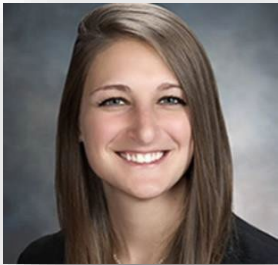
ENHANCED FORENSIC TRACK PSYCHOLOGY FELLOWSHIP TRAINING FACULTY



Le'Marus P. Alston, Ph.D. (Fielding Graduate University, 2021) Internship: Saint Elizabeths Hospital, **Residency:** Saint Elizabeths, Forensic Track **Staff Psychologist – Dix House, 1D Forensic Consult Service, Theoretical Orientation:** Psychodynamic
Interests: Individual Psychotherapy, Personality Disorders, HIV/AIDS Prevention



MELANIE BAILEY, Psy.D. (American School of Professional Psychology, 2017) Internship: Spring Grove Hospital Center, **Residency:** Springfield Hospital Center **Forensic Psychologist – Forensic Services Division Theoretical Orientation:** Systems
Interests: Criminal Law, Civil Law, Psychological Testing, Dissimulation & Response Biases, Adult Populations, Ethics



KATHARYN BASELICE, MD. (University of Virginia, School of Medicine, 2017) Residency: New York University Department of Psychiatry
Fellowship: University of Virginia, Forensic Psychiatry Fellowship (UVA Institute of Law, Psychiatry and Public Policy; Western State Hospital; Fluvanna Correctional Center for Women) **Forensic Psychiatrist, Forensic Services Division**
Theoretical Orientation: Biological, Evolutionary, Behavioral **Interests:** Forensic Evaluation, Violence Risk Assessment and Mitigation, Sexual Violence Risk Assessment, Competency Evaluation, Criminal Responsibility Evaluation



ALIX BURKS, Ph.D. (Sam Houston State University, 2017) Internship: Federal Medical Center – Carswell, Fort Worth, Texas **Residency:** Saint Elizabeths Hospital (Forensic Track) **Staff Psychologist – O'Malley House, 1C, Forensic Consult Service, Theoretical Orientation:** Dialectical Behavior Therapy and Cognitive Behavior Therapy. **Interests:** Forensic Psychology, Working with Marginalized Populations (Gender and Sexual Minorities, Incarcerated Women), Sex Offender Risk Assessment and Treatment



CAROLINE S. CHEVALIER, Ph.D. (Sam Houston State University, 2017)

Internship: Saint Elizabeths Hospital, **Residency:** Saint Elizabeths Hospital (Forensic Track)

Clinical Administrator, Psychologist – 1C O’Malley House, Forensic Consult Service,

Theoretical Orientation: Cognitive Behavioral Therapy. **Interests:** Risk Assessment, Clinical Research, Forensic Assessment (Competency to stand Trial and Criminal

Responsibility Evaluations) **For fun I...** play with my kiddo, Carter!



TIARRA CURRIE, Ph.D. (Derner School of Psychology, Adelphi University)

Internship: Saint Elizabeths Hospital, **Residency:** Saint Elizabeths Hospital (Forensic Track)

Staff Psychologist – Blackburn House, 2C, Forensic Consult Service

Theoretical Orientation: Psychodynamic, **Interests:** Individual Therapy, Malingering Assessments, Misdiagnosis of Black Americans, Community Mental Health, Depression,

Trauma, **For fun I...** enjoy traveling, reading self-care books, making homemade candles, and imaginary play with my toddler



TERESA GRANT, Ph.D. (Howard University, 2006)

Internship: Spring Grove Hospital Center

Residency: Court Services and Offender Supervision Agency Clinical Psychologist –

Forensic Services Division Theoretical Orientation: Psychodynamic

Interests: Providing culturally sensitive services, sex offender evaluations, and risk assessments. **For fun, I like ...** music, sports, and cooking...Go Cowboys!



CHRISTINE LOVELADY, Psy.D. (Loyola University Maryland, 2010) Internship: VAMC Hampton, Virginia
Residency: Saint Elizabeths Hospital (Civil Track)
Supervisory Clinical Administrator, Forensic Services Division Theoretical Orientation: Cognitive-Behavioral / Interpersonal Interests: Geropsychology, health psychology, dialectical behavioral therapy, clinical supervision



SHILPA KRISHNAN, Ph.D. (George Mason University, 2012)
Internship: NYU/Bellevue Hospital Center (Forensic Track) Residency: Saint Elizabeths Hospital (Forensic Track) Deputy Director of Forensic Services; Co-Director of Psychology Training (Enhanced Forensic Evaluation Fellowship).
Theoretical Orientation: Cognitive-Behavioral
Interests: Violence Risk/Sexual Violence Risk Assessment, Competence to Stand Trial, Criminal Responsibility, Forensic Assessment



ELIZABETH LOW, Ph.D. (University of Nebraska – Lincoln, 2019) Internship: University of North Carolina School of Medicine/Federal Correctional Complex – Butner (Forensic)
Residency: University of Massachusetts Medical School (Forensic)
Clinical Psychologist - Forensic Services Division Theoretical Orientation: Cognitive Behavioral
Interests: Forensic Evaluation, Psychological Assessment, Competency Restoration, Risk Assessment and Management, Malingering



TARA MAZZOTTA, Psy.D. (William James College, 2017) Internship: Saint Elizabeths Hospital Residency: Saint Elizabeths Hospital (Forensic Track)
Deputy Director of Psychology Forensic Consult Service
Theoretical Orientation: Cognitive Behavioral Therapy
Interests: Group and Individual Competency Restoration, Risk Assessment, Competence to Stand Trial Evaluation, Civil Commitment



DEANNA METROPOULOS, Psy.D. (University of Denver, 2020)
Internship: Saint Elizabeths Hospital
Residency: Saint Elizabeths Hospital (Forensic Track)
Staff Psychologist – Howard House, 1G Forensic Consult Service
Theoretical Orientation: Cognitive Behavioral Therapy
Interests: Forensic Evaluation, Psychological Assessment, Competency Restoration, Risk Assessment (Violence and Sexual Violence)



LAUREN PRICE, Psy.D. (Florida Institute of Technology, 2021) Internship: Saint Elizabeths Hospital (Forensic Rotation) Residency: Forum Ohio, LLC (Forensic)
Clinical Psychologist - Forensic Services Division Theoretical Orientation: Cognitive Behavioral, Interests: Forensic Assessment (e.g., Competency to Stand Trial, Criminal Responsibility, Mitigation, Risk Assessment, Feigning/Malingering), Competency Restoration, Interplay between Culture and the Law, Training and Development



LIA ROHLEHR, Ph.D., ABPP (Fordham University, 2014) Internship: Tulane University School of Medicine Residency: University of Massachusetts Medical School Clinical Psychologist – Forensic Services Division Theoretical Orientation: *Eclectic*
Interests: Forensic assessment, risk assessment, trauma, cultural competence in forensic practice and research



CHAD TILLBROOK, Ph.D. (The University of Alabama, 2000) Internship: NYU/Bellevue Hospital Center (Forensic Track), Residency: University of Massachusetts Medical School (Forensic Track), Director, Forensic Services Division Theoretical Orientation: Cognitive Behavioral, Interests: Forensic System Development and Implementation, Forensic Evaluation, Risk Assessment and Management



GRAHAM DANZER, Psy.D. (Alliant International University, California School for Professional Psychology/CSPP, San Francisco, CA, 2016)
Internship: State of Maine, Riverview Psychiatric Center (Forensic and Civil Tracks)
Clinical Psychologist – Forensic Services Division
Theoretical Orientation: Psychoanalytic
Interests: Competence to stand trial, malingering, psychopathy, violence risk assessment, operational psychology



PAMELA NYSTROM, Psy.D. (The Chicago School of Professional Psychology, D.C. - 2020)
Internship: Wright State School of Professional Psychology/Eastway Behavioral Healthcare (Forensic), Residency: Forensic Psychiatry Center for Western Ohio (Forensic Evaluation), Clinical Psychologist - Forensic Services Division
Theoretical Orientation: Cognitive Behavioral
Interests: Forensic Evaluation (primarily Competency to Stand Trial and Criminal Responsibility), Malingering, Relevancy-Focused Forensic Report Writing, Ethical Considerations for Forensic Psychology

OTHER FACULTY OR STAFF ASSOCIATED WITH THE TRAINING PROGRAM



CARLA STERLING, Psy.D., (Regent University, VA, 2014)

Internship: The Village for Families and Children, Hartford, CT

Director of Psychology Training

Theoretical Orientation: Integrative (including Biopsychosocial theory, CBT, Psychodynamic)

Interests: Trauma & Resilience; Attachment & Trauma; Compassion Fatigue & Vicarious Trauma; Neurofeedback; Social Justice; Multicultural Diversity; Health Promotion & Disease Prevention; Health & Emotional Wellness.

For fun I... Read; dance; sing; listen to music; play the piano (or daydream of playing more frequently); do cardio kickboxing; meditate; brunch with close friends.



RICHARD BOESCH, Ph.D. (The Catholic University of America, 2001)

Internship: Howard University Counseling Center

Residency: Howard University Hospital Department of Psychiatry

Director of Psychology Formerly PBS Team Leader

Theoretical Orientation: Psychodynamic with extensive training in PET and CBT-P

Interests: Behavioral interventions, Developmental Disabilities, Adult Survivors of Childhood Sexual Abuse, Couples Therapy



RICHARD GONTANG, Ph.D. (Virginia Commonwealth University, 1994)

Internship: DC Commission on Mental Health Services Residency: DC Commission on Mental Health Services Chief Clinical Officer

Theoretical Orientation: Systemic (Multisystemic, Structural, Strategic, & Solution-Focused) Interests: ADHD, Family Therapy, Multicultural Issues



TANYA HATCHER-SCHIPANOVA (Kazakh State University, Kazakhstan, 1981)

Diploma in Journalism with State Qualification of Journalist

Psychology Department Program Specialist

Interests: My professional interest is still in writing, and I continue to publish my articles in the newspaper where I worked before coming to the USA.

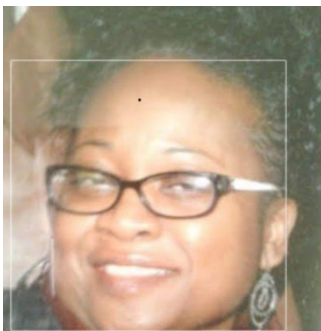
For fun, I ... love to put on a puppet show with my grandchildren, volunteer and bake pastries and cakes to share with my constantly dieting colleagues, friends, and family.



VONNESSA BEARD

Forensic Services Division – Staff Assistant (Inpatient)

Interest: As a valued member of the Forensic Services Division since 2016, I am passionate about Inpatient mental health services as it provides a stable and controlled environment for those in crisis. In addition, I enjoy using my skills as a legal audit examiner to complete the various workflow task in FSD.



VERNE LEZAMA MATTOX - (The Catholic University of America - 2016)

MSM – Management

Forensic Services Program Specialist

Interest: Program and Data Management – Improve how data is defined, organized, managed, analyzed, and used.

ELIGIBILITY

Fellowship applicants must have completed their doctoral degrees from an APA-accredited clinical or counseling psychology Ph.D. or Psy.D. program. Those with psychology doctorates who have re-specialized in an APA-accredited clinical or counseling program also may apply. Preference will be given to individuals who completed an APA-accredited internship. **The doctoral degree must be conferred prior to start of Fellowship.** Fellows must remain in training for twelve full months in order to successfully complete their Fellowship and earn a completion certificate.

This is a fast-paced, specialized training track and is best suited for applicants who have completed coursework in forensic psychology and who have previous experience with evaluations of competency to stand trial, criminal responsibility, and/or violence risk. For applicants who do not have prior experience with forensic evaluations and who are interested in gaining such exposure, we encourage you to consider applying to the SEH Inpatient Psychology Fellowship, Forensic Track.

APPLICATION PROCEDURES

Applicants should submit:

1. A detailed letter of interest describing your specific goals for post-doctoral training in the areas of forensic and general assessment, cultural competency, and professional development (Cover Letter). In the cover letter, **applicants should indicate their interest in the Enhanced Forensic Evaluation Track position**. If applicants are also interested in the Inpatient Forensic Fellowship Track, please refer to the Saint Elizabeths Hospital Inpatient Fellowship Brochure.
2. Curriculum vita
3. Official graduate school transcript(s)
4. Three (3) letters of recommendations from individuals directly familiar with your forensically relevant clinical work, including at least one supervisor who may speak to your most recent forensic/clinical experiences.
5. An integrated psychological assessment report (fully redacted) for an adult testing case.
6. A (fully redacted) report with a forensic referral question (e.g., Competency to Stand Trial, Criminal Responsibility). If a report with these specifications is not available, please include an equivalent alternative.

All application materials should be combined into one PDF document, addressed to Shilpa Krishnan, Ph. D., and emailed directly to seh.psychologytraining@dc.gov. Letters of recommendation may be included in the application PDF document, or sent directly by the author of the letter to: seh.psychologytraining@dc.gov .

Scanned unofficial transcripts are acceptable for electronic application. If you are selected for a Fellowship here, we do require an official transcript to be submitted immediately upon acceptance. Your recommendation letters may be sent directly to seh.psychologytraining@dc.gov via email, or included in your combined PDF document.

Applications are due by 11:59 EST, December 27, 2024.

Applications for Fellowship will be evaluated using the following criteria: academic preparation, forensic evaluation experience, clinical experience with seriously mentally ill populations and/or correctional populations, clinical and/or forensic experience with an urban minority population, and fit between the applicant's objectives and our program offerings.

INTERVIEW DATES AND LOCATION

Following an initial review of the Fellowship application packages, selected applicants will be invited via email for interview by **January 6, 2025**. Interview appointments will be offered on weekdays starting the week of **January 17, 2025**.

We will be conducting interviews virtually. Applicants will meet with the Director and Co-Director of Psychology Training to learn about the structure of the program and will then interview individually with several members of the training faculty. Applicants will also have an opportunity to take a virtual tour of the hospital and ask additional questions. Requests to meet with specific staff are welcome. After interviewing, all applicants will have opportunities to contact additional members of the faculty, should they express an interest in doing so. Please contact: seh.psychologytraining@dc.gov with any questions you may have.

All interviews will be held virtually this year, with opportunities to meet with Enhanced Forensic Fellowship Psychology training faculty.

TRAINING POSITION OFFERS

We will adhere to the **Common Hold Date of February 24, 2025**. Interviews and offers will be made on a rolling basis until all positions are filled. We will be conducting virtual interviews and hospital tours.

The start date for the Fellowship is scheduled for the beginning of September. However, start dates are somewhat flexible based on internship completion dates.

Program Changes will be posted on the website [http:// www.appic.org](http://www.appic.org)

PUBLIC DISCLOSURE

The postdoctoral fellowship program is an APPIC-member program and is not an APA-accredited residency.

For information regarding the Guidelines and Principles for Accreditation of Programs in Professional Psychology, contact:

Office of Program Consultation and Accreditation
Education Doctorate
American Psychological Association
750 First Street, NE
Washington, DC 20002-4242
(202) 336-5979
<http://www.apa.org/ed/accreditation/>