

Saint Elizabeths Hospital
Psychology Externship Program

2025-2026

Richard Boesch, Ph.D.
Director of Psychology

Tara Mazzotta, Psy.D.
Deputy Director of Psychology

Carla Sterling, Psy.D.
Director of Psychology Training

Richard Gontang, Ph.D.
Chief Clinical Officer

Mark Chastang, MPA, MBA
Chief Executive Officer

Table of Contents

- History of Psychology at Saint Elizabeths Hospital..... 4
- PSYCHOLOGY TRAINING PROGRAM GOAL..... 8
- EXTERNSHIP PROGRAM DESCRIPTION..... 8
 - Program Components..... 9
 - Psychological Assessment..... 9
 - Psychotherapy..... 9
 - Seminars and Clinical Case Presentation..... 9
 - Supervision..... 9
- Major Rotations 10
 - Admissions/Pretrial Units 10
 - Acute Admissions 10
 - Pretrial..... 10
 - Long-Term Units 10
 - Long-term Intensive Units..... 10
 - Long-term Transitional Units..... 11
 - Geriatric/Medically Compromised Units..... 11
- Therapeutic Learning Centers (TLC) 11
- GENERAL INFORMATION 13
- SAINT ELIZABETHS HOSPITAL RESOURCES 13
- TRAINING FACULTY 14
- ELIGIBILITY 19
- APPLICATION PROCEDURES 19
- INTERVIEW DATES AND LOCATION 20
- TRAINING POSITION OFFERS..... 20

GREETINGS!

We at Saint Elizabeths Hospital are delighted that you are interested in our externship training program in clinical psychology. Saint Elizabeths Hospital in Washington, DC is a publicly funded inpatient psychiatric hospital, with 292 beds distributed between 12 forensic and civil units. Our program offers the opportunity to develop your clinical skills while working with a seriously mentally ill BIPOC patient population. We provide the training needed to prepare you for a career as a psychologist in the health service psychology. Our faculty is composed of excellent clinicians who are role models with a wide range of clinical experiences and training. We offer a challenging and varied educational experience that exposes you to the many different roles that psychologists play in a public mental health hospital and to the different stages of psychopathology as individuals in care undergo treatment. We are committed to fostering your professional development and preparing you for your future career as a professional psychologist.

This brochure includes information about the hospital, the psychology department, and the externship training program. Following is information to assist you in making an informed decision about whether this program is a good fit for your interests, training needs, and professional goals.

SAINT ELIZABETHS HOSPITAL HISTORY

By Jogues R. Prandoni, Ph.D., Suryabala Kanhouwa, M.D., and Richard Gontang, Ph.D.

Saint Elizabeths Hospital, originally known as the Government Hospital for the Insane, was founded by Congress in 1852 through the efforts of Dorothea Lynde Dix. Ms. Dix was a pioneering mental health reformer who worked to change the view of the mentally ill and how to properly care for them. She advocated for the mentally ill to “provide the most humane care and enlightened curative treatment” for the insane. The founding legislation for the hospital, written by Dix herself, opened the hospital to patients from the Army and Navy as well as both black and white residents of the District. Saint Elizabeths was America’s first federal mental hospital, and it was the first public mental hospital in the District of Columbia.

Situated on a bluff overlooking the convergence of the Anacostia and Potomac rivers, the hospital became known as “St. Elizabeths”—often appearing in print as just “St. Elizabeth”—after the old colonial land grant on which it was built. Congress officially renamed the institution in 1916, codifying the characteristic plural spelling that remains today. Lush landscaped grounds were an integral part of campus planning at St. Elizabeths throughout its history. Dix selected the hospital’s commanding location, with its panoramic view of Washington, because the serene setting was believed critical to patients’ recovery, according to contemporary theories of moral therapy. Numerous efforts over time to improve the natural environment that patients encountered resulted in a wealth of gardens, expansive lawns, fountains, ponds, and graded walks. It was, according to writer Ina Emery, “a garden of beauty through which the gods might wander....Indeed, it is one of the most attractive parks within the District of Columbia.”

Saint Elizabeths’ historic prominence among American mental hospitals is reflected in the fact that its first five superintendents were all elected president of the American Psychiatric Association and its predecessor organizations. During their tenure, the hospital served as a center for training psychiatrists, psychologists, nurses, medical doctors, and countless scientists and researchers. It was for many years a leader in the adoption of new forms of treatment, such as art therapy, psychodrama, and dance therapy, as well as a strong voice in the creation of forensic case law and mental health legislation. For example, its superintendents from the beginning opposed the requirement of a public jury trial in all lunacy proceedings in the District of Columbia, eventually leading, in 1938, to federal legislation creating a Commission on Mental Health and the authorization of private commitment hearings.

The hospital boomed in the first half of the twentieth century, only to face a steady decline in patient population and services in the second. The hospital was the only government facility to treat mentally ill military personnel until 1919, and World War II brought in the largest patient numbers in its history. In 1946, however, Congress ended the long association between the hospital and the armed forces,

in favor of treatment at the nation's expanding system of veteran's hospitals. District patients and other federal dependents remained, but advances in psychopharmacology, the development of community-based alternatives to institutionalization, and new attitudes toward mental health care subsequently reduced the need for large public mental hospitals. Although the establishment of the National Institutes of Mental Health's Neuroscience center on the hospital grounds in 1971 continued the tradition of pioneering research on the campus, it did nothing to stave off falling patient numbers.

In 1987, the federal government transferred operation of Saint Elizabeths and ownership of the 118-acre east campus to the District of Columbia. Saint Elizabeths then merged with the city's mental health administration to become the DC Commission on Mental Health Services (CMHS). In April, 2001, as part of major restructuring of the city's mental health system, a bill was passed in the District of Columbia's City Council establishing the city's Department of Mental Health. The Department of Mental Health was made responsible for regulating the District's community-based network of mental health care. Saint Elizabeths Hospital, the District of Columbia's Community Services Agency (DC CSA) and the Mental Health Authority were established as three distinct agencies within the Department of Mental Health, each with its own administration and separate functions.

As the patient population continued to decrease, the hospital closed numerous vacant buildings and consolidated all services to city-owned land. The historic west campus was sold to the federal government to become the future headquarters for the Department of Homeland Security, and the hospital's functions were consolidated to the east campus. In 2005, the hospital broke ground on a new state-of-the-art building on the east campus, the goals being to unify the hospital's functions and modernize the care and living conditions for the hospital's patient population. The new hospital building, opened in 2010, reflects our hospital administration's forward thinking and its historical standing as an innovator in provision of care and in the development of therapeutic living environments for the mentally ill.



In this new, modern environment of care, we are able to provide the kind individualized, recovery-based psychiatric care that individuals who stay with us deserve. We are proud to have had a psychologist as Chief Executive Officer and a psychologist as current Chief Clinical Officer at Saint Elizabeths.

History of Psychology at Saint Elizabeths Hospital

William Alanson White, the fourth superintendent (1903-37), was a leading figure in 20th century psychiatry, and he steered St. Elizabeths even further toward the scientific vanguard by establishing a psychology laboratory and subsequently forming the first psychology department in any mental hospital, which recently celebrated its 100th anniversary in 2007. The following section chronicles the creation of the department:

100th Anniversary of Psychology Department Saint Elizabeths Hospital

By

Suryabala Kanhouwa, M.D., & Jogues R. Prandoni, Ph.D.

Dr. White ushered in the scientific era at the hospital. An integral part of this process involved establishing a Psychology Department at Saint Elizabeths as “an expression of the most advanced trends in modern psychiatry.” He strongly believed that the hospital “... should add its quota to the sum of knowledge on this very important subject.” At the same time, Dr. White recognized that “the methods of normal psychology must be modified to suit the changed conditions.”



To this end, on January 1, 1907 he appointed Shepherd Ivory Franz, Ph.D., who received a doctorate in psychology from Columbia University and had worked at Harvard and Dartmouth Medical Schools, the first Psychologist and Director of Research at Saint Elizabeths Hospital. Dr. Franz’s first assignment was to develop a clinical examination procedure that could be used as a basis for the routine examination of patients. In response to this challenge, he contributed a chapter on psychological examination methods to White’s 1908 well-known textbook *Outline of Psychiatry*. He later expanded the chapter to become a separate book titled *Handbook of Mental Examination Methods* (1912).

During his seventeen years at Saint Elizabeths Hospital, Dr. Franz witnessed what he described as the “volcanic rise of psychoanalytic belief....Even the organic neurological had assumed value only if correlated with the Freudian mental mechanism.” Dr. Franz provided a much needed balance during this era of rapidly evolving theories and knowledge of mental disorders by focusing on experimental and clinical neuropsychology. In spite of numerous teaching and administrative responsibilities, he

remained committed to research. His diverse areas of scientific inquiry included extensive work on the localization of the cerebral functions, psychopathological, touch and other skin sensations, the cerebrum, and rehabilitation and re-education following brain injury especially as it related to war veterans. He authored numerous scientific publications and is credited with 32 articles and numerous books. During his tenure at Saint Elizabeths Hospital, he also served as the editor of the *Psychological Bulletin* (1912—1924) and as the President of the American Psychological Association (1920).

Dr. Franz left St. Elizabeths Hospital in 1924 to become the first chairman of Department of Psychology at UCLA where he was highly instrumental in the development of their graduate studies programs. He died on October 14, 1933 following the onset of amyotrophic lateral sclerosis. In 1940, the university opened Franz Hall, a Life Science building named in his honor, to house the Psychology Department.

Shepherd Ivory Franz was one of the preeminent psychologists during the first part of the 20th century. He was distinguished in the field of neurological and physiological psychology. Under his leadership, studies conducted by Saint Elizabeths Hospital's Psychology Laboratory were influential in the development of the field of clinical psychology. Among his numerous professional contributions, historians credit him with founding the first psychological laboratory in a hospital (McLean Hospital) in 1904 and the first implementation of routine psychological testing for patients in a mental hospital (Saint Elizabeths Hospital) in 1907.

Dr. Franz is but one of many famous mental health pioneers to work or train at Saint Elizabeths. Other staff-of-note or trainees were Karl S. Lashley, Harry Stack Sullivan, E. G. Boring, Alexander Wolfe, Hans Strupp, and Margaret Ives. We are proud to note our current Chief of Clinical Operations is a psychologist who trained here, as are many of the faculty members.

Today, psychologists in Saint Elizabeths Hospital continue to make significant contributions to patients' growth and recovery from mental disorders. Psychology's leadership and contributions in diverse areas such as risk management, cognitive behavioral therapy and co-occurring disorders are helping patients develop new ways of thinking, behaving and mastering life's challenges facilitating their successful return to the community and enhancing the quality of their lives.

PROGRAM PHILOSOPHY AND TRAINING MODEL

The Psychology Department maintains a strong commitment to the training of externs and makes every effort to provide as enriching an experience as possible within an atmosphere of mutual respect and professionalism. We endeavor to achieve a good balance between serving the clinical needs of the patient population and keeping the training mission paramount. This perspective is reflected in the quality of supervision that has characterized this program over the years. Our training program utilizes a Practitioner Apprenticeship model, and externs work alongside staff psychologists, psychology interns, and psychology residents, frequently conducting assessments and treatment jointly. This model helps externs develop competence through experiential learning or "learning by doing." and supervised practice under the guidance of experienced practitioners. We are committed to supporting externs in their development of their clinical competencies.

We place particular emphasis on exposing externs to the breadth and variety of professional roles assumed by psychologists, including exposure to specialty areas such as forensic psychology, geropsychology, and specialized assessments.

PSYCHOLOGY TRAINING PROGRAM GOAL

The primary goal of the Psychology Externship Program is to develop externs' knowledge base and clinical skills necessary for the culturally-informed and humble practice of professional psychology, with particular emphasis on the development of skills working with the severely mentally ill in a public health setting. Program graduates will leave with improved skills in individual and group psychotherapy, psychological assessment, ethical and professional behavior, consultation with treatment teams, and the culturally competent delivery of psychological services to a primarily BIPOC and seriously mentally ill patient population.

EXTERNSHIP PROGRAM DESCRIPTION

The externship is a nine-month, part-time experience beginning on or about mid-September of each year and ending on or about mid-June of the following year, depending on extern schedules and training needs. The externship is a 16-20 hour per week experience, with an array of training experiences including direct clinical services and clinical supervision. Externs see a minimum of two individual therapy patients, co-facilitate one psychotherapy group each week, and conduct a minimum of two full battery psychological assessments/ integrated reports. Externs may also have opportunities to complete additional assessments during the course of the externship training year.

Program Components

The following are components of the externship program:

Psychological Assessment

During the training year, externs are encouraged to expand their repertoire of test instruments and to increase their familiarity with manual and computerized scoring. Training in assessment includes learning how to work effectively with seriously mentally ill individuals in an assessment setting. In addition, externs have the opportunity to learn new assessment instruments and develop skills relevant to choosing appropriate tests for the clinical population and referral question. Externs also receive training in the integration of all data into reports to provide a comprehensive clinical picture of the individual, along with individualized recommendations relevant to the individual's needs.

Externs must complete a minimum of two full battery psychological evaluations. Externs *may* also have opportunities to complete initial psychological assessments on pretrial / admissions rotations and/or 60-day update assessments on long-term rotations by the end of externship.

Psychotherapy

Training in psychotherapy occurs via group and individual interventions. Trainees are expected to maintain a minimum caseload of one psychotherapy group hour and two individual psychotherapy cases per week over the course of the externship. Externs will have opportunities to learn new skills providing therapy to individuals diagnosed with serious mental illness, including psychotic disorders (e.g., schizophrenia, schizoaffective disorder, and bipolar disorder), personality disorders (e.g., borderline personality disorder, antisocial personality disorder), neurocognitive impairments, and intellectual disabilities.

Seminars and Clinical Case Presentation

Approximately 1.5 hours per week are devoted to didactic seminars. The extern seminar series covers a variety of topics, including working with individuals who are seriously and persistently mentally ill, personality and cognitive assessment, group and individual therapy, legal issues, forensic processes, and ethics and diversity. During the second half of the externship seminar, externs will present two cases. One presentation will include data obtained from an assessment conducted by the extern, and the other presentation will be a conceptualization of a therapy case that includes treatment recommendations and rationale, multicultural issues, and legal/ethical issues. All externs are required to attend the weekly seminar every Friday morning.

Externs are also welcome to attend continuing educational activities including Grand Rounds and those sponsored by the SEH Department of Psychology.

Supervision

Intensive clinical supervision is a feature of the externship. Each extern receives a minimum of three hours of supervision per week. Externs are supervised by SEH psychology postdoctoral fellows and licensed clinical psychologists. Each extern will receive one hour per week of

supervision for psychological assessment and one hour of supervision per week for individual psychotherapy from the Fellow supervising that activity. Licensed clinical psychologists provide supervision of supervision for the Fellows. Externs also receive an additional one hour total of unit and group therapy supervision from licensed staff psychologists.

Major Rotation

The hospital is divided by security level into two sides: the Intensive Services side and the Transitional Services side. The Intensive side includes the civil admissions, pretrial, and long-term intensive treatment units as well as the Intensive Therapeutic Learning Center (TLC). The Transitional side includes the transitional treatment, medically compromised and geriatric units, and the Transitional Therapeutic Learning Center. Externs spend the duration of their externship rotation on an admissions/pretrial unit or on a long-term intensive or transitional unit.

Admissions/Pretrial Units

Acute Admissions: For the majority of civil individuals in care, the co-ed acute admissions unit (1E) is where individuals in care begin their stay at Saint Elizabeths Hospital. Individuals in care are admitted to SEH from the following referral sources: the Comprehensive Psychiatric Emergency Program (CPEP) or transfers from other area hospital psychiatric units. The individuals in care generally fall into the following three groups: emergency hospitalizations (involuntary), voluntary, and committed. The average length of stay on the Admissions unit is 30 days. After that time, individuals in care are either ready for discharge or transfer to a longer-term unit in the hospital.

Pretrial: The majority of the individuals admitted to pretrial units have been charged with a crime, and following the charge(s), a judge has ordered an evaluation to be conducted in an inpatient setting. The types of evaluations vary according to the court order. The most common type of evaluation requested is related to the individual's competency to stand trial. At times, additional evaluations are requested, including competency to plead guilty, competency to waive the insanity defense, competency to participate in sentencing, and competency to participate in probation revocation hearings. The pretrial units provide competency restoration, along with short-term treatments such as psychotherapy and psychoeducational groups. There are four pretrial units at the hospital, including one all-female unit.

Long-Term Units

Long-term Intensive Units: Long-term intensive units provide services to persons adjudicated Not Guilty by Reason of Insanity and persons needing more time to stabilize in a secure setting while their current psychiatric issues are addressed within a structured and supervised therapeutic setting. Emphasis is on helping people develop skills to allow them to meaningfully participate in their recovery and effectively manage the increased freedom,

responsibility and opportunities for growth available in less secure/structured settings. There are three long-term intensive units: two all-male medium/maximum security units, and one co-ed continuing care unit.

Long-term Transitional Units: Long-term transitional units are minimum security, mostly post-trial units, with some civilly committed individuals on each unit (one unit is male and the other is a co-ed unit). The post-trial individuals in care on these units have been found Not Guilty by Reason of Insanity (NGRI) and committed to SEH indefinitely for psychiatric treatment. The primary goal on these units is treatment, with ongoing assessment to determine the patient's response to treatment and appropriateness for community re-entry. These units provide a unique forensic experience in that they offer the opportunity to work with both post-trial populations and civilly committed individuals in a minimum security setting.

Geriatric/Medically Compromised Units: Individuals in care referred to this unit for treatment typically have chronic medical problems, dementia, and/or are older adults. These units aim to provide optimal programming, treatment planning and therapeutic interventions aimed at treating serious mental illness while also addressing these other special needs. Some individuals are not fully ambulatory and require wheelchairs or walkers. Functional status of individuals ranges from "full assist" (e.g., they require assistance with eating and toileting needs) to fully independent. Many individuals on this unit have cognitive impairments due to progressive dementia, traumatic brain injury (TBI), or stroke. The individuals on these are a mixed population and have forensic and civil statuses.

Therapeutic Learning Centers (TLCs)*

The psychology department provides a full range of psychological services in the Intensive and Transitional TLCs including individual therapy, group psychotherapy, psycho-educational groups, and psychological assessment. Group psychotherapy is the primary modality of psychotherapy practiced in the TLCs, and externs may conduct a group there throughout their training. In addition to general psychotherapy groups, specialized treatment is provided for subgroups such as individuals with sex offense histories, those in recovery from substance abuse, or individuals diagnosed with personality disorders. Externs may have opportunities to participate in or observe a specialty group, depending on appropriateness for the group members' treatment.

The Intensive TLC includes pretrial programming (e.g., competency restoration groups), as well as other groups adapted for treatment of individuals who are presenting with acute symptomatology and need more intensive treatment before they are community-ready. Individuals in care in the Intensive TLC receive a variety of therapeutic services and specialized programming, including many groups aimed at competency restoration for those individuals of pretrial status.

The Transitional TLC provides treatment for individuals who are preparing to reenter the community. Within the Transitional TLC groups, individuals in care present with a full range of severe psychiatric conditions. Individuals in care in the Transitional services program receive a variety of therapeutic services, including participation in specialty groups such as ACT, DBT, Coping Skills, and Anger Management. Group services are also provided on the in the milieu on all Intensive and some Transitional units at various times during the day, and group topics are developed based on the needs of the individuals residing on each unit.

*** Due to the pandemic, the TLCs were used temporarily as patient care areas. Due to the need to avoid cross-exposure among units, all groups occurred on the units between 2020 and 2023. Currently, the TLC is run on half-day schedules with the Stepping Stones TLC in the morning and the Pre-Trial TLC in the afternoon. Groups are held on the units throughout the day for those not at the TLC. Some groups may not be available, or may occur via telebehavioral health technologies, depending on changes in COVID-19 status at the hospital.

GENERAL INFORMATION

Work Hours

At Saint Elizabeths Hospital, hours are 8:30 am to 5:00 pm, Monday through Friday. Lunch is 30 minutes. **Fridays are required**, given that the extern seminar series takes place on Fridays. At the onset of their externship, externs will select one additional weekday to be present at SEH. Though externs are on site only two days a week, it is expected they will check email regularly in order to remain updated on the clinical progress of their patients, and to receive any notices from hospital administration (e.g., relating to COVID-19 protocols).

Hospital Orientation

Externs will be required to attend a week and a half long hospital orientation prior to the onset of their training, generally offered during the summer months. Information regarding this orientation will be dispersed to selected applicants.

Number of Positions

Depending on staff/supervisor availability, one to two externship positions are anticipated for the 2025-2026 training year. Should staff complement change, up to three positions would be available.

SAINT ELIZABETHS HOSPITAL RESOURCES

Employee Health Unit (Location: Saint Elizabeths Hospital Medical Clinic, Room 114.08)

Health Sciences Library (Location: Saint Elizabeths Hospital, Room 256)

- Interlibrary loan services with the National Library of Medicine are available.
- Internet database access is available that via your work or home computer.
- Access to electronic version of the DSM-5

Computer Labs (Location: Saint Elizabeths Hospital, Rooms 248 & 250)

Psychology Department Testing Library (Location: Saint Elizabeths Hospital, Room 243)

Psychology Training Faculty



Le'Marus P. Alston, Ph.D. (Fielding Graduate University, 2021)

Internship: Saint Elizabeths Hospital

Residency: Saint Elizabeths, Forensic Track

Staff Psychologist – Dix House, 1D

Forensic Consult Service

Theoretical Orientation: Psychodynamic

Interests: Individual Psychotherapy, Personality Disorders, HIV/AIDS Prevention



MELANIE BAILEY, Psy.D. (American School of Professional Psychology, 2017)

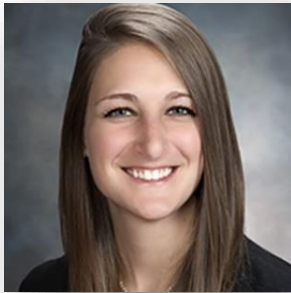
Internship: Spring Grove Hospital Center

Residency: Springfield Hospital Center

Forensic Psychologist – Forensic Services Division

Theoretical Orientation: Systems

Interests: Criminal Law, Civil Law, Psychological Testing, Dissimulation & Response Biases, Adult Populations, Ethics



KATHRYN BASELICE, M.D. (University of Virginia, School of Medicine, 2017)

Residency: New York University Department of Psychiatry

Fellowship: University of Virginia, Forensic Psychiatry Fellowship (UVA Institute of Law, Psychiatry and Public Policy; Western State Hospital; Fluvanna Correctional Center for Women)

Forensic Psychiatrist, Forensic Services Division

Theoretical Orientation: Biological, Evolutionary, Behavioral

Interests: Forensic Evaluation, Violence Risk Assessment and Mitigation, Sexual Violence Risk Assessment, Competency Evaluation, Criminal Responsibility Evaluation



SID BINKS, Ph.D., ABPP-CN (George Washington University, 1992)

Internship: Spring Grove Hospital Center

Residency: National Institutes of Mental Health (Neuropsychology)

Staff Neuropsychologist – Neurology Services

Theoretical Orientation: Psychodynamic

Interests: Forensic Neuropsychology, Schizophrenia



RICHARD BOESCH, Ph.D. (Catholic University of America, 2001)

Internship: Howard University Counseling Center

Residency: Howard University Hospital Department of Psychiatry

Director of Psychology

Formerly PBS Team Leader

Theoretical Orientation: Psychodynamic with extensive training in PET and CBT-P

Interests: Behavioral interventions, Developmental Disabilities, Adult Survivors of Childhood Sexual Abuse, Couples Therapy



ALIX BURKS, Ph.D. (Sam Houston State University, 2017)

Internship: Federal Medical Center – Carswell, Fort Worth, Texas

Residency: Saint Elizabeths Hospital (Forensic Track)

Staff Psychologist – O’Malley House, 1C

Forensic Consult Service

Theoretical Orientation: Dialectical Behavior Therapy and Cognitive Behavior Therapy

Interests: Forensic Psychology, Working with Marginalized Populations (Gender and Sexual Minorities, Incarcerated Women), Sex Offender Risk Assessment and Treatment



CAROLINE S. CHEVALIER, Ph.D. (Sam Houston State University, 2017)

Internship: Saint Elizabeths Hospital

Residency: Saint Elizabeths Hospital (Forensic Track)

Clinical Administrator, Psychologist – 1C O’Malley House

Forensic Consult Service

Theoretical Orientation: Cognitive Behavioral Therapy

Interests: Risk Assessment, Clinical Research, Forensic Assessment (Competency to stand Trial and Criminal Responsibility Evaluations)

For fun I... play with my kiddo, Carter!



KATHRYN BRISTOL CROSON, Psy.D. (George Washington University, 2008)

Internship: Saint Elizabeths Hospital (Civil)

Residency: Saint Elizabeths Hospital (Civil)

Staff Psychologist – Gorelick House, 2A

Theoretical Orientation: Psychodynamic

Interests: Assessment and treatment of serious and chronic mental illness; Geriatric Psychology, Psychological Assessment and Individual Psychotherapy



TIARRA CURRIE, Ph.D. (Derner School of Psychology, Adelphi University)

Internship: Saint Elizabeths Hospital

Residency: Saint Elizabeths Hospital (Forensic Track)

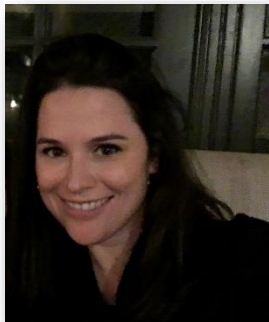
Staff Psychologist – Blackburn House, 2C

Forensic Consult Service

Theoretical Orientation: Psychodynamic

Interests: Individual Therapy, Malingering Assessments, Misdiagnosis of Black Americans, Community Mental Health, Depression, Trauma

For fun I... enjoy traveling, reading self-care books, making homemade candles, and imaginary play with my toddler



KERI-LYNN DOYLE, Psy.D. (Loyola University of Maryland, 2018)

Internship: Saint Elizabeths Hospital

Residency: Saint Elizabeths Hospital

Supervisory Clinical Psychologist, Positive Behavior Support Team

Theoretical Orientation: Cognitive Behavioral Therapy (with emphasis on ACT and CBTp)

Interests: Trauma Informed Care for Clients and Providers, Psychodiagnostic and Risk Assessment, Risk Management, Cultural Humility, Group Therapy



CHRISTOPHER J. EDWARDS, Ph.D. (Palo Alto University, 2018)

Internship: Saint Elizabeths Hospital

Staff Psychologist – Nichols House, 2B

Theoretical Orientation: Integrative, Transtheoretical

Interests: Systematic Treatment Selection and other Clinical Research, Psychodiagnostic Assessment, Forensic Assessment



RICHARD GONTANG, Ph.D. (Virginia Commonwealth University, 1994)

Internship: DC Commission on Mental Health Services

Residency: DC Commission on Mental Health Services

Chief Clinical Officer

Theoretical Orientation: Systemic (Multisystemic, Structural, Strategic, & Solution-Focused)

Interests: ADHD, Family Therapy, Multicultural Issues



TERESA GRANT, Ph.D. (Howard University, 2006)

Internship: Spring Grove Hospital Center

Residency: Court Services and Offender Supervision Agency

Clinical Psychologist – Forensic Services Division

Theoretical Orientation: Psychodynamic

Interests: Providing culturally sensitive services, sex offender evaluations, and risk assessments.

For fun, I like ... music, sports, and cooking...Go Cowboys!



TANYA HATCHER-SCHIPANOVA (Kazakh State University, Kazakhstan, 1981)

Diploma in Journalism with State Qualification of Journalist

Psychology Department Program Specialist

Interests: My professional interest is still in writing, and I continue to publish my articles in the newspaper where I worked before coming to the USA.

For fun, I ... love to put on a puppet show with my grandchildren, volunteer and bake pastries and cakes to share with my constantly dieting colleagues, friends, and family.



ERIC JONES, Ph.D. (University of Rhode Island, 1988)

Internship: University of Medicine and Dentistry of New Jersey, New Brunswick

Staff Psychologist – Hayden House, 1E

Theoretical Orientation: Psychodynamic and Family Systems

Interests: Family Treatment, Cultural Issues, Trauma, DBT, Sex Offenders Group



CHRISTINE LOVELADY, Psy.D. (Loyola University Maryland, 2010)

Internship: VAMC Hampton, Virginia

Residency: Saint Elizabeths Hospital (Civil Track)

Supervisory Clinical Administrator, Forensic Services Division

Theoretical Orientation: Cognitive-Behavioral / Interpersonal

Interests: Geropsychology, health psychology, dialectical behavioral therapy, clinical supervision



SHILPA KRISHNAN, Ph.D. (George Mason University, 2012)

Internship: NYU/Bellevue Hospital Center (Forensic Track)

Residency: Saint Elizabeths Hospital (Forensic Track)

Deputy Director of Forensic Services

Theoretical Orientation: Cognitive-Behavioral

Interests: Violence Risk/Sexual Violence Risk Assessment, Competence to Stand Trial, Criminal Responsibility, Forensic Assessment



LAMONT LARRY, Ph.D. (Syracuse University, 1997)

Internship: New York University–Bellevue Hospital Center (Civil and Forensic tracks)

Staff Psychologist –Barton House, 1B

Theoretical Orientation: Family Systems, Hypnotherapy, Brief Psychotherapy

Interests: Race and Psychology, Neuropsychology, Geropsychology, Forensic Psychology/Violence Risk



ELIZABETH LOW, Ph.D. (University of Nebraska – Lincoln, 2019)

Internship: University of North Carolina School of Medicine/Federal Correctional Complex – Butner (Forensic)

Residency: University of Massachusetts Medical School (Forensic)

Clinical Psychologist - Forensic Services Division

Theoretical Orientation: Cognitive Behavioral

Interests: Forensic Evaluation, Psychological Assessment, Competency Restoration, Risk Assessment and Management, Malingering



TARA MAZZOTTA, Psy.D. (William James College, 2017)

Internship: Saint Elizabeths Hospital

Residency: Saint Elizabeths Hospital (Forensic Track)

Deputy Director of Psychology

Forensic Consult Service

Theoretical Orientation: Cognitive Behavioral Therapy

Interests: Group and Individual Competency Restoration, Risk Assessment, Competence to Stand Trial Evaluation, Civil Commitment



DEANNA METROPOULOS, Psy.D. (University of Denver, 2020)

Internship: Saint Elizabeths Hospital

Residency: Saint Elizabeths Hospital (Forensic Track)

Staff Psychologist – Howard House, 1G

Forensic Consult Service

Theoretical Orientation: Cognitive Behavioral Therapy

Interests: Forensic Evaluation, Psychological Assessment, Competency Restoration, Risk Assessment (Violence and Sexual Violence)



PAMELA NYSTROM, Psy.D. (The Chicago School of Professional Psychology, D.C. - 2020)

Internship: Wright State School of Professional Psychology/Eastway Behavioral Healthcare (Forensic)

Residency: Forensic Psychiatry Center for Western Ohio (Forensic Evaluation)

Clinical Psychologist - Forensic Services Division

Theoretical Orientation: Cognitive Behavioral

Interests: Forensic Evaluation (primarily Competency to Stand Trial and Criminal Responsibility), Malingering, Relevancy-Focused Forensic Report Writing, Ethical Considerations for Forensic Psychology



LAUREN PRICE, Psy.D. (Florida Institute of Technology, 2021)

Internship: Saint Elizabeths Hospital (Forensic Rotation)

Residency: Forum Ohio, LLC (Forensic)

Clinical Psychologist - Forensic Services Division

Theoretical Orientation: Cognitive Behavioral

Interests: Forensic Assessment (e.g., Competency to Stand Trial, Criminal Responsibility, Mitigation, Risk Assessment, Feigning/Malingering), Competency Restoration, Interplay between Culture and the Law, Training and Development



LIA ROHLEHR, Ph.D., ABPP (Fordham University, 2014)

Internship: Tulane University School of Medicine

Residency: University of Massachusetts Medical School

Clinical Psychologist – Forensic Services Division

Theoretical Orientation: *Eclectic*

Interests: Forensic assessment, risk assessment, trauma, cultural competence in forensic practice and research



MICHELLE SIMPSON, Psy.D. (Loma Linda University, 2021)

Internship: Mississippi State Hospital

Residency: St. Elizabeths Hospital (general inpatient/SMI track)

Staff Psychologist – Hayden House 1E

Theoretical Orientation: Cognitive Behavioral Therapy

Interests: Treatment of serious mental illness, trauma informed care, psychological assessment, and clinical supervision



CARLA STERLING, Psy.D., (Regent University, VA, 2014)

Internship: The Village for Families and Children, Hartford, CT

Director of Psychology Training

Theoretical Orientation: Integrative (including Biopsychosocial theory, CBT, Psychodynamic)

Interests: Trauma & Resilience; Attachment & Trauma; Compassion Fatigue & Vicarious Trauma; Neurofeedback; Social Justice; Multicultural Diversity; Health Promotion & Disease Prevention; Health & Emotional Wellness.

For fun I... Read; dance; sing; listen to music; play the piano (or daydream of playing more frequently); do cardio kickboxing; meditate; brunch with close friends.



CHAD TILLBROOK, Ph.D. (The University of Alabama, 2000)

Internship: NYU/Bellevue Hospital Center (Forensic Track)

Residency: University of Massachusetts Medical School (Forensic Track)

Director, Forensic Services Division

Theoretical Orientation: Cognitive Behavioral

Interests: Forensic System Development and Implementation, Forensic Evaluation, Risk Assessment and Management



Michelle Trujillo, Psy.D. (William James College, 2022)

Internship: Saint Elizabeths Hospital

Residency: Saint Elizabeths Hospital - Forensic Track

Staff Psychologist – Dix House, 1D

Theoretical Orientation: Relational Psychodynamic & Cognitive-Behavioral

Interests: Forensic Evaluation, Violence/Sexual Violence Risk Assessment, Treatment of Serious Mental Illness, Cultural Issues, Multilingual Assessment and Psychotherapy

ELIGIBILITY

Applications for externship will be rated in consideration of the following criteria: academic preparation, clinical experiences, and fit between the applicant's learning and career objectives and our program's offerings. Candidates with practicum training/clinical experience with psychological testing and individuals with serious mental illnesses are preferred.

In accordance with the DC Human Rights Act of 1977, as amended, DC Code 1-2501, et seq., (The Act), The District of Columbia does not discriminate on the basis of race, color, religion, national origin, sex, marital status, personal appearance, sexual orientation, familial status, family responsibilities, matriculation, political affiliation, disability, source of income, or place of residence or business. Sexual harassment is a form of sexual discrimination which is also prohibited by the Act. Discrimination in violation of the act will not be tolerated. Violators will be subject to disciplinary action.

An employee physical, TB test, drug test (including marijuana), criminal background check, and proof of COVID-19 vaccination are required prior to starting.

APPLICATION PROCEDURES

Applicants should submit:

1. A letter of interest describing specific reasons for wanting to train at SEH and ways in which the SEH externship is consistent with your career goals
2. Curriculum vita
3. Official graduate school transcript(s) – to be sent from registrar directly to address listed below (note: we accept unofficial transcripts for the application, but an official transcript is required if an externship offer is extended and accepted)
4. Two (2) letters of recommendation from persons familiar with your clinical work, including a **current** supervisor
5. Sample of an integrated psychological evaluation (minus identifying information) that includes **both** intellectual and objective and/or projective personality test measures

We prefer electronic versions of all documents except your transcript. Letters of recommendation may be scanned and sent directly from those supervisors who are providing recommendations. Please send electronic submissions to seh.psychologytraining@dc.gov in **ONE** email, with the exception of letters of recommendation, which should be sent directly from supervisors. Please ask your letter writers to include "Recommendation Letter for X applicant" in the subject line.

Any questions about our application procedures may be emailed to Dr. Carla Sterling at seh.psychologytraining@dc.gov

Our Mailing Address is:

Saint Elizabeths Hospital
ATTN: Carla Sterling, Psy.D.
Director of Psychology
Training
Department of Psychology
1100 Alabama Avenue S.E.
Washington, DC 20032
Email: seh.psychologytraining@dc.gov

Completed applications must be received by Friday, January 24, 2025

Following review of the application packages, selected applicants will be invited for a virtual interview at the hospital. Applicants who are no longer under consideration will be informed via e-mail by **February 7, 2025**.

INTERVIEW DATES AND LOCATION

Applicants invited for interviews will be contacted via phone or email by **February 7, 2025**. All interviews will be held virtually during the months of February and March. The hospital is located at 1100 Alabama Avenue, SE, Washington, DC 20032.

TRAINING POSITION OFFERS

The Greater Washington Area Directors of Clinical Training (GWADCT) helps coordinate the annual offering and accepting of externship placements by clinical psychology graduate students.

We will adhere to a **Universal Student Acceptance Date** (UAD) approach as advised by the GWADCT <https://psychpracticum.gmu.edu/council-guidelines/> Specifically, applicants will be offered positions during the week of Friday, **March 7, 2025** with the understanding that students are not able to accept an offer until **9:00 a.m. EST** on **March 7, 2025**.

In addition, we will adhere to the following guidelines from the GWADCT:

- Externship Training Directors may make externship training offers prior to the UAD, no later than 9:00 a.m. EST one day (24 hours) prior to the UAD (**March 7, 2025**).
- Applicants can accept externship offers on **Friday, March 7, 2025** starting at **9:00 a.m. EST**.
- Beginning at 9:00 a.m. EST on UAD, students must select and hold only one externship training offer at a time from all offers received. They may decline less preferred offers within one hour up until 5:00 p.m. Externship training offers made after 4:00 p.m. EST will carry over to the next weekday at 10:00 a.m. EST.
- Please email seh.psychologytraining@dc.gov if you wish to withdraw from consideration.